



**Legend**

**LEP Population  
(by 2010 Census Tracts)**

The following LEP language groups constitute 5% or more of the total population of persons eligible to be served or likely to be affected or encountered.

**LEP Populations 5% or more**

Spanish

NW Rural Transit District  
Dial-A-Ride  
Bus Service Area

**Major Railroads**

Freight

Passenger

Town Boundaries

**References**

Dial-A-Ride Bus Service Area consists of the towns of Barkhamsted, Canaan, Colebrook, Cornwall, Goshen, Harwinton, Kent, Litchfield, Morris, New Hartford, Norfolk, Salisbury, Sharon, Torrington, Warren and Winchester. These services are available to seniors and those with disabilities.

Data Source: CTDOT Travel Model Unit

The LEP data is based on the 2011 - 2015 American Community Survey (ACS) 5-year Estimates, Table B16001, 5 years and older.

**Map Scale**



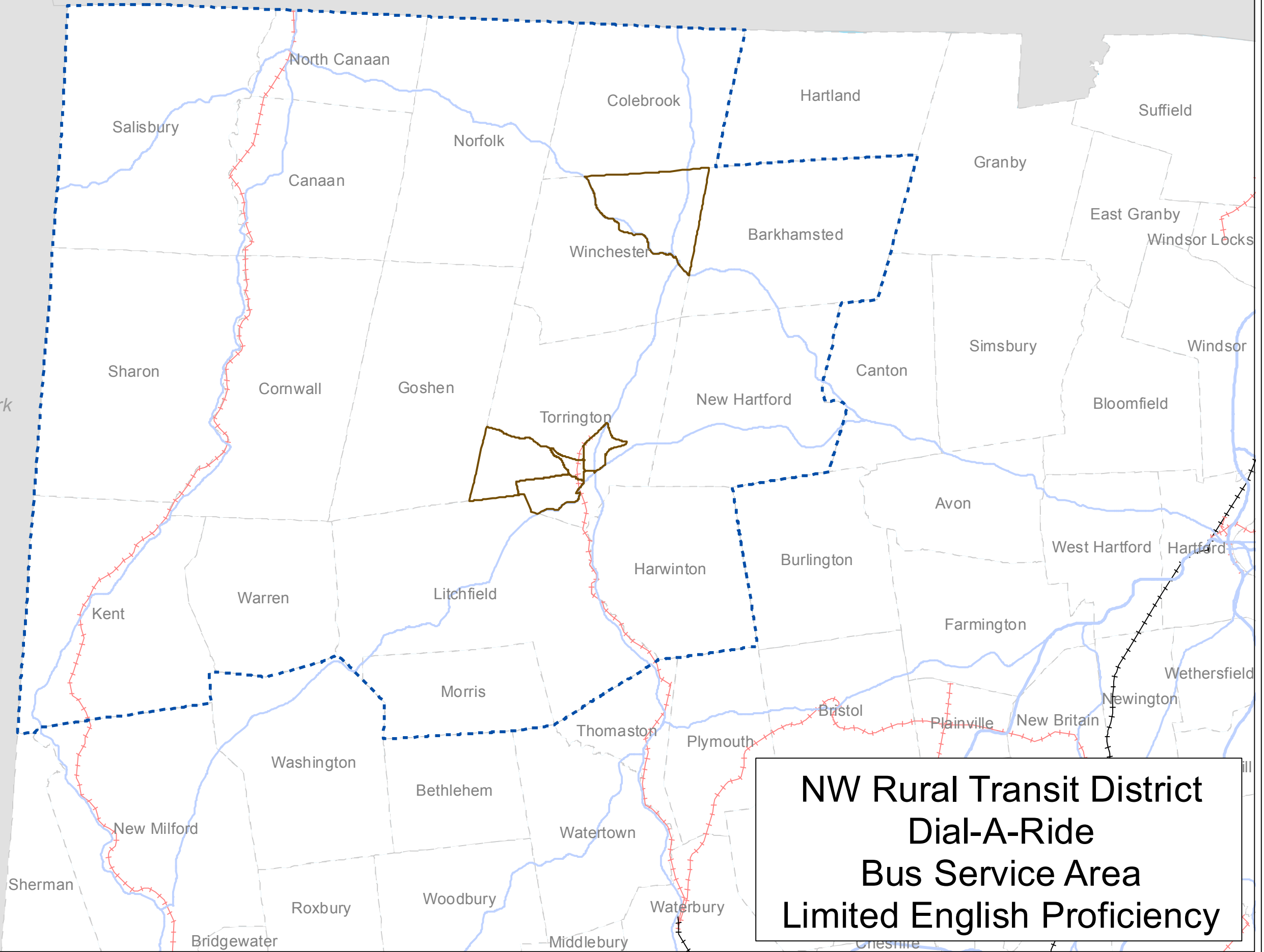
Developed August 2017

This map, developed for internal ConnDOT use, is a cartographic rendering of DOT roadway records. It should not be referenced or incorporated in any manner in legal documents or proceedings



New York

Massachusetts



**NW Rural Transit District  
Dial-A-Ride  
Bus Service Area  
Limited English Proficiency**