



Legend

**NE Rural Transit District
Dial-A-Ride
Bus Service Area**

Percent Low Income

- 0 - 16.737
- 16.738 - 20.000
- 20.001 - 26.163

NE Rural Transit District
Dial-A-Ride
Bus Service Area

Major Railroads

- Freight
- Passenger
- Town Boundaries

References

Dial-A-Ride Bus Service Area consists of the towns of Brooklyn, Killingly, Putnam and Thompson. These services are available to seniors and those with disabilities.

Data Source: CTDOT Travel Model Unit

The low income data is based on the 2011 - 2015 American Community Survey (ACS) 5-year Estimates, Table B17024

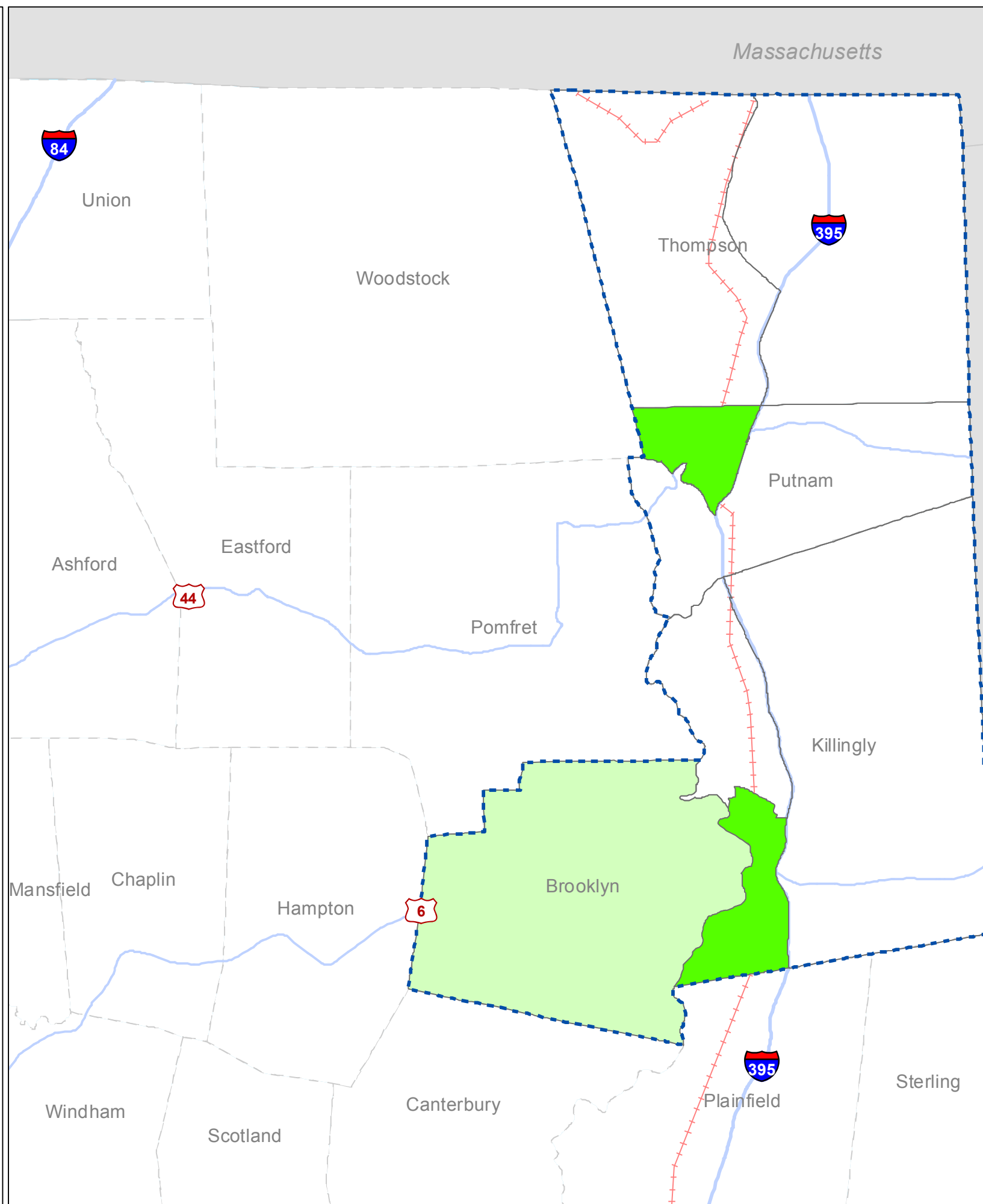
The average percentage low income population for the NE Rural Transit District Dial-A-Ride Bus Service Area is 16.737.

Map Scale



Developed August 2017

This map, developed for internal ConnDOT use, is a cartographic rendering of DOT roadway records. It should not be referenced or incorporated in any manner in legal documents or proceedings



Rhode Island



**NE Rural Transit District
Dial-A-Ride
Bus Service Area
Low Income**