



**Legend**

**CTfastrak  
Bus Service Area  
Percent Low Income**

- 0 - 28.562
- 28.563 - 30.000
- 30.001 - 40.000
- 40.001 - 60.000
- 60.001 - 100.000
- CTfastrak Bus Service Area
- Major Railroads**
- Freight
- Passenger
- Town Boundaries

**References**

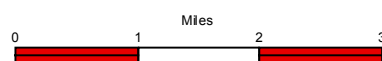
Bus Service Area: The area contained by a 1/4 mile buffer applied to the bus routes.

Data Source: CTDOT Travel Model Unit

The low income data is based on the 2011 - 2015 American Community Survey (ACS) 5-year Estimates, Table B17024

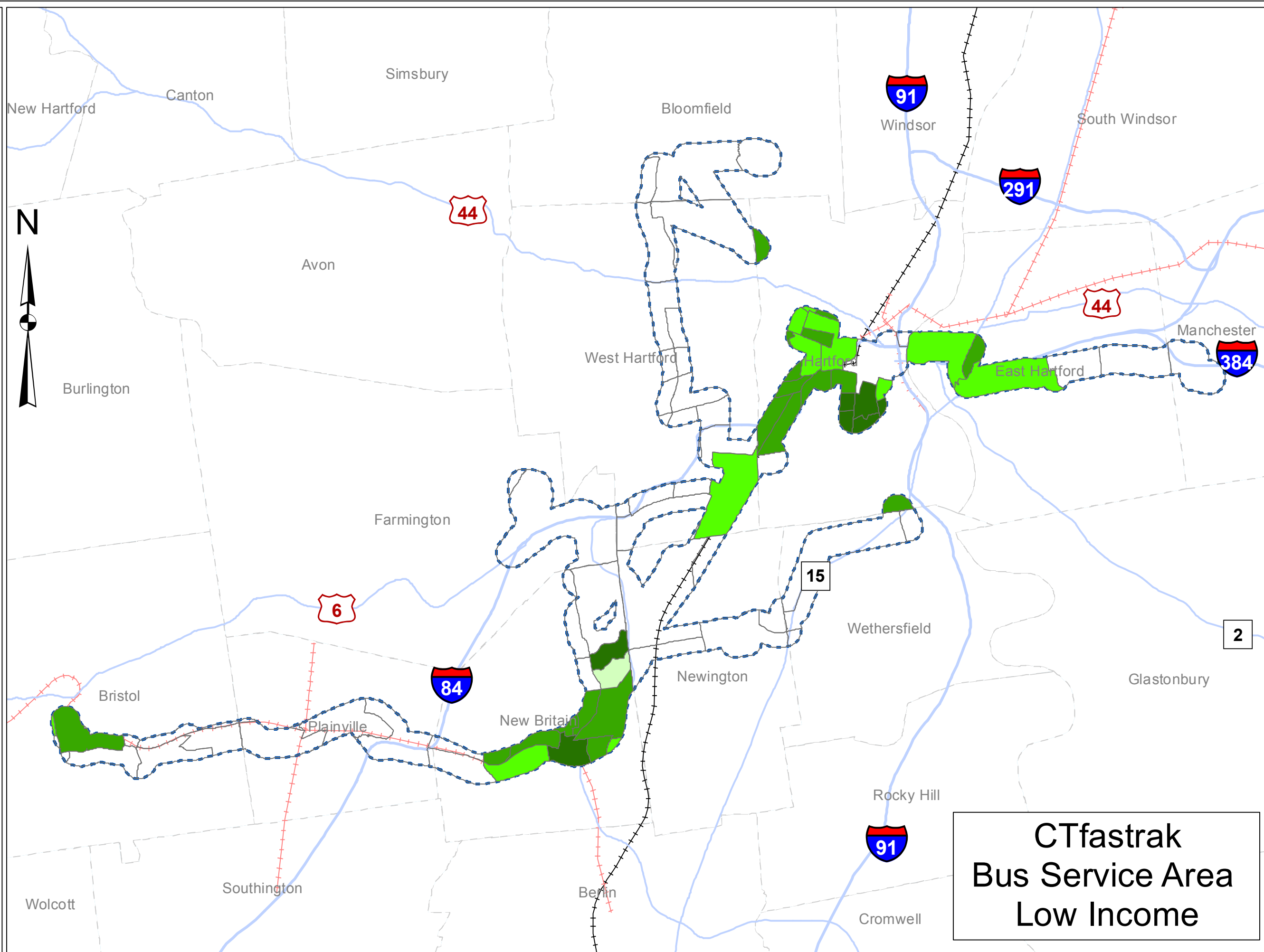
The average percentage low income population for the CTfastrak Bus Service Area is 28.562.

**Map Scale**



Developed August 2017

This map, developed for internal ConnDOT use, is a cartographic rendering of DOT roadway records. It should not be referenced or incorporated in any manner in legal documents or proceedings



**CTfastrak  
Bus Service Area  
Low Income**