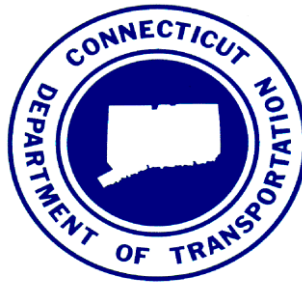


CONNECTICUT
TRAFFIC CRASH FACTS
2014



**Connecticut Department of Transportation
Bureau of Policy and Planning
Crash Data and Analysis Unit
and The University of Connecticut**

May 2016

TABLE OF CONTENTS

TABLE OF CONTENTS ----- I

INTRODUCTION ----- 1

DATA LIMITATIONS ----- 2

2014 QUICK FACTS ----- 3

ALL REPORTED CRASHES

CRASHES, INJURIES AND FATALITIES (2005-2014) ----- 4

CRASH RATES (2005-2014) ----- 6

TIME OF OCCURRENCE ----- 7

ROUTE CLASS ----- 11

ENVIRONMENTAL CONDITIONS ----- 13

TOWN AND COUNTY OF OCCURRENCE ----- 15

CONTRIBUTING FACTORS ----- 20

TYPE OF COLLISION ----- 22

VEHICLE TYPE ----- 23

DRIVER AGE ----- 24

DRIVER SEX ----- 27

SEAT BELT USAGE ----- 28

HOLIDAYS ----- 29

REPORTED ALCOHOL INVOLVED CRASHES

CRASHES, INJURIES AND FATALITIES (2005-2014) ----- 30

TIME OF OCCURRENCE ----- 31

DRIVER AGE ----- 33

DRIVER SEX ----- 36

HOLIDAYS ----- 37

REPORTED TRACTOR-TRAILER INVOLVED CRASHES

CRASHES, INJURIES AND FATALITIES (2005-2014) ----- 38

TIME OF OCCURRENCE ----- 39

ROUTE CLASS ----- 41

REPORTED PEDESTRIAN INVOLVED CRASHES

CRASHES, INJURIES AND FATALITIES (2005-2014) 43
TIME OF OCCURRENCE 44
PEDESTRIAN AGE 46
PEDESTRIAN SEX 47

REPORTED MOTORCYCLE INVOLVED CRASHES

CRASHES, INJURIES AND FATALITIES (2005-2014) 48
TIME OF OCCURRENCE 49
MOTORCYCLE DRIVER AGE 52
MOTORCYCLE DRIVER SEX 53
HELMET USAGE 54

APPENDIX

TRAFFIC CRASH GLOSSARY 55

INTRODUCTION

This report presents data of motor vehicle crashes that occurred on Connecticut's publicly maintained roadways during 2014. The information required to produce this report was obtained from police crash reports supplied to the Connecticut Department of Transportation (CT DOT) by investigating police agencies.

Connecticut law requires that in each motor vehicle traffic crash in which any person is killed or injured or in which damage to the property of any one individual in excess of \$1,000 is sustained, the police officer, agency or individual who investigates the crash must forward a copy of the completed police crash report to the CT DOT. Before October 1, 1990, each operator involved in a motor vehicle traffic crash was also required to file an operator crash report with the Connecticut Department of Motor Vehicles, which was in turn forwarded to CT DOT and included in its traffic crash database. Operators involved in motor vehicle crashes are no longer required to file operator crash reports

CT DOT devotes a considerable amount of time and effort in analyzing each crash report to determine crash dynamics, causal factors and crash location prior to entering the data into UConn's Crash Data Repository (CTCDR). The repository is constantly updated and verified in order to ensure its accuracy. This report documents facts on reported 2014 traffic crashes included in the CTCDR. This report contains statistics on various categories of traffic crashes. These categories include all report crashes, reported alcohol-related crashes, reported tractor-trailer involved crashes, reported pedestrian involved crashes and reported motorcycle involved crashes. In addition to 2014 crash data, this report also presents a 10 year trend (2005-2014) of total crashes, injuries and fatalities for each category, to show how the data has changed over time. Tables and graphs are used to summarize and visualize various crash attributes.

This report is published to inform the reader of current traffic crash statistics and trends. CT DOT and UConn welcome any comments or suggestions regarding improvement of the content and structure of this report.

DATA LIMITATIONS

The reader should be aware of certain limitations in the data used to produce this report. These limitations include the following:

- Windsor Locks did not submit crash data to CT DOT for 2011. Therefore there are no Windsor Locks crashes on file for that year.
- Only motor vehicle traffic crashes that have been reported to the CT DOT are included in this report. Not included are crashes that did not meet the minimum criteria for a reportable crash, crashes that the police did not investigate, and crashes that the police investigated but did not report or that CT DOT did not receive. Variations in the reported totals contained in this report may be due to incomplete reporting and may not necessarily reflect the variations in the actual totals.
- Property damage only crashes that occurred on locally maintained roadways were not coded for inclusion in the CT DOT traffic crash database for the time period of January 1, 2002 to December 31, 2006 as well as March 1, 2011 to December 31, 2011. The reader should be aware of the omission of local road property damage only crashes when reviewing data for this particular time period.

2014 QUICK FACTS

ALL REPORTED CRASHES

<table style="width: 100%; border-collapse: collapse;"> <tr><td style="width: 50%;">PDO CRASHES</td><td style="width: 50%; text-align: right;">73,544</td></tr> <tr><td>INJURY CRASHES</td><td style="text-align: right;">22,796</td></tr> <tr><td>FATAL CRASHES</td><td style="text-align: right;">234</td></tr> <tr><td>TOTAL CRASHES</td><td style="text-align: right;">96,574</td></tr> </table>	PDO CRASHES	73,544	INJURY CRASHES	22,796	FATAL CRASHES	234	TOTAL CRASHES	96,574	<table style="width: 100%; border-collapse: collapse;"> <tr><td style="width: 50%;">INJURIES</td><td style="width: 50%; text-align: right;">31,842</td></tr> <tr><td>FATALITIES</td><td style="text-align: right;">248</td></tr> </table>	INJURIES	31,842	FATALITIES	248	<table style="width: 100%; border-collapse: collapse;"> <tr><td style="width: 50%;">"A" INJURIES</td><td style="width: 50%; text-align: right;">1,356</td></tr> <tr><td>"B" INJURIES</td><td style="text-align: right;">8,681</td></tr> <tr><td>"C" INJURIES</td><td style="text-align: right;">21,805</td></tr> </table>	"A" INJURIES	1,356	"B" INJURIES	8,681	"C" INJURIES	21,805
PDO CRASHES	73,544																			
INJURY CRASHES	22,796																			
FATAL CRASHES	234																			
TOTAL CRASHES	96,574																			
INJURIES	31,842																			
FATALITIES	248																			
"A" INJURIES	1,356																			
"B" INJURIES	8,681																			
"C" INJURIES	21,805																			

REPORTED ALCOHOL INVOLVED CRASHES

<table style="width: 100%; border-collapse: collapse;"> <tr><td style="width: 50%;">PDO CRASHES</td><td style="width: 50%; text-align: right;">1,592</td></tr> <tr><td>INJURY CRASHES</td><td style="text-align: right;">871</td></tr> <tr><td>FATAL CRASHES</td><td style="text-align: right;">78</td></tr> <tr><td>TOTAL CRASHES</td><td style="text-align: right;">2,541</td></tr> </table>	PDO CRASHES	1,592	INJURY CRASHES	871	FATAL CRASHES	78	TOTAL CRASHES	2,541	<table style="width: 100%; border-collapse: collapse;"> <tr><td style="width: 50%;">INJURIES</td><td style="width: 50%; text-align: right;">1,041</td></tr> <tr><td>FATALITIES</td><td style="text-align: right;">97</td></tr> </table>	INJURIES	1,041	FATALITIES	97	<table style="width: 100%; border-collapse: collapse;"> <tr><td style="width: 50%;">"A" INJURIES</td><td style="width: 50%; text-align: right;">83</td></tr> <tr><td>"B" INJURIES</td><td style="text-align: right;">445</td></tr> <tr><td>"C" INJURIES</td><td style="text-align: right;">513</td></tr> </table>	"A" INJURIES	83	"B" INJURIES	445	"C" INJURIES	513
PDO CRASHES	1,592																			
INJURY CRASHES	871																			
FATAL CRASHES	78																			
TOTAL CRASHES	2,541																			
INJURIES	1,041																			
FATALITIES	97																			
"A" INJURIES	83																			
"B" INJURIES	445																			
"C" INJURIES	513																			

REPORTED TRACTOR-TRAILER INVOLVED CRASHES

<table style="width: 100%; border-collapse: collapse;"> <tr><td style="width: 50%;">PDO CRASHES</td><td style="width: 50%; text-align: right;">1,940</td></tr> <tr><td>INJURY CRASHES</td><td style="text-align: right;">368</td></tr> <tr><td>FATAL CRASHES</td><td style="text-align: right;">8</td></tr> <tr><td>TOTAL CRASHES</td><td style="text-align: right;">2,316</td></tr> </table>	PDO CRASHES	1,940	INJURY CRASHES	368	FATAL CRASHES	8	TOTAL CRASHES	2,316	<table style="width: 100%; border-collapse: collapse;"> <tr><td style="width: 50%;">INJURIES</td><td style="width: 50%; text-align: right;">539</td></tr> <tr><td>FATALITIES</td><td style="text-align: right;">10</td></tr> </table>	INJURIES	539	FATALITIES	10	<table style="width: 100%; border-collapse: collapse;"> <tr><td style="width: 50%;">"A" INJURIES</td><td style="width: 50%; text-align: right;">11</td></tr> <tr><td>"B" INJURIES</td><td style="text-align: right;">124</td></tr> <tr><td>"C" INJURIES</td><td style="text-align: right;">404</td></tr> </table>	"A" INJURIES	11	"B" INJURIES	124	"C" INJURIES	404
PDO CRASHES	1,940																			
INJURY CRASHES	368																			
FATAL CRASHES	8																			
TOTAL CRASHES	2,316																			
INJURIES	539																			
FATALITIES	10																			
"A" INJURIES	11																			
"B" INJURIES	124																			
"C" INJURIES	404																			

REPORTED PEDESTRIAN INVOLVED CRASHES

<table style="width: 100%; border-collapse: collapse;"> <tr><td style="width: 50%;">PDO CRASHES</td><td style="width: 50%; text-align: right;">105</td></tr> <tr><td>INJURY CRASHES</td><td style="text-align: right;">975</td></tr> <tr><td>FATAL CRASHES</td><td style="text-align: right;">47</td></tr> <tr><td>TOTAL CRASHES</td><td style="text-align: right;">1,127</td></tr> </table>	PDO CRASHES	105	INJURY CRASHES	975	FATAL CRASHES	47	TOTAL CRASHES	1,127	<table style="width: 100%; border-collapse: collapse;"> <tr><td style="width: 50%;">INJURIES</td><td style="width: 50%; text-align: right;">1,020</td></tr> <tr><td>FATALITIES</td><td style="text-align: right;">47</td></tr> <tr><td>(PEDESTRIANS)</td><td></td></tr> </table>	INJURIES	1,020	FATALITIES	47	(PEDESTRIANS)		<table style="width: 100%; border-collapse: collapse;"> <tr><td style="width: 50%;">"A" INJURIES</td><td style="width: 50%; text-align: right;">160</td></tr> <tr><td>"B" INJURIES</td><td style="text-align: right;">464</td></tr> <tr><td>"C" INJURIES</td><td style="text-align: right;">396</td></tr> </table>	"A" INJURIES	160	"B" INJURIES	464	"C" INJURIES	396
PDO CRASHES	105																					
INJURY CRASHES	975																					
FATAL CRASHES	47																					
TOTAL CRASHES	1,127																					
INJURIES	1,020																					
FATALITIES	47																					
(PEDESTRIANS)																						
"A" INJURIES	160																					
"B" INJURIES	464																					
"C" INJURIES	396																					

REPORTED MOTORCYCLE INVOLVED CRASHES

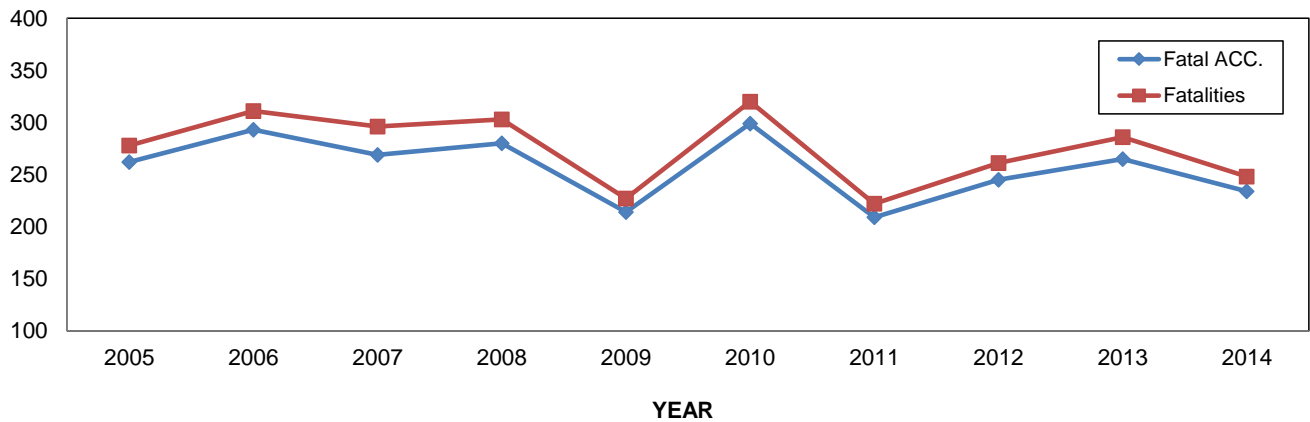
<table style="width: 100%; border-collapse: collapse;"> <tr><td style="width: 50%;">PDO CRASHES</td><td style="width: 50%; text-align: right;">314</td></tr> <tr><td>INJURY CRASHES</td><td style="text-align: right;">907</td></tr> <tr><td>FATAL CRASHES</td><td style="text-align: right;">47</td></tr> <tr><td>TOTAL CRASHES</td><td style="text-align: right;">1,268</td></tr> </table>	PDO CRASHES	314	INJURY CRASHES	907	FATAL CRASHES	47	TOTAL CRASHES	1,268	<table style="width: 100%; border-collapse: collapse;"> <tr><td style="width: 50%;">INJURIES</td><td style="width: 50%; text-align: right;">958</td></tr> <tr><td>FATALITIES</td><td style="text-align: right;">48</td></tr> <tr><td>(MOTORCYCLE OCCUPANTS)</td><td></td></tr> </table>	INJURIES	958	FATALITIES	48	(MOTORCYCLE OCCUPANTS)		<table style="width: 100%; border-collapse: collapse;"> <tr><td style="width: 50%;">"A" INJURIES</td><td style="width: 50%; text-align: right;">190</td></tr> <tr><td>"B" INJURIES</td><td style="text-align: right;">523</td></tr> <tr><td>"C" INJURIES</td><td style="text-align: right;">245</td></tr> </table>	"A" INJURIES	190	"B" INJURIES	523	"C" INJURIES	245
PDO CRASHES	314																					
INJURY CRASHES	907																					
FATAL CRASHES	47																					
TOTAL CRASHES	1,268																					
INJURIES	958																					
FATALITIES	48																					
(MOTORCYCLE OCCUPANTS)																						
"A" INJURIES	190																					
"B" INJURIES	523																					
"C" INJURIES	245																					

ALL REPORTED CRASHES

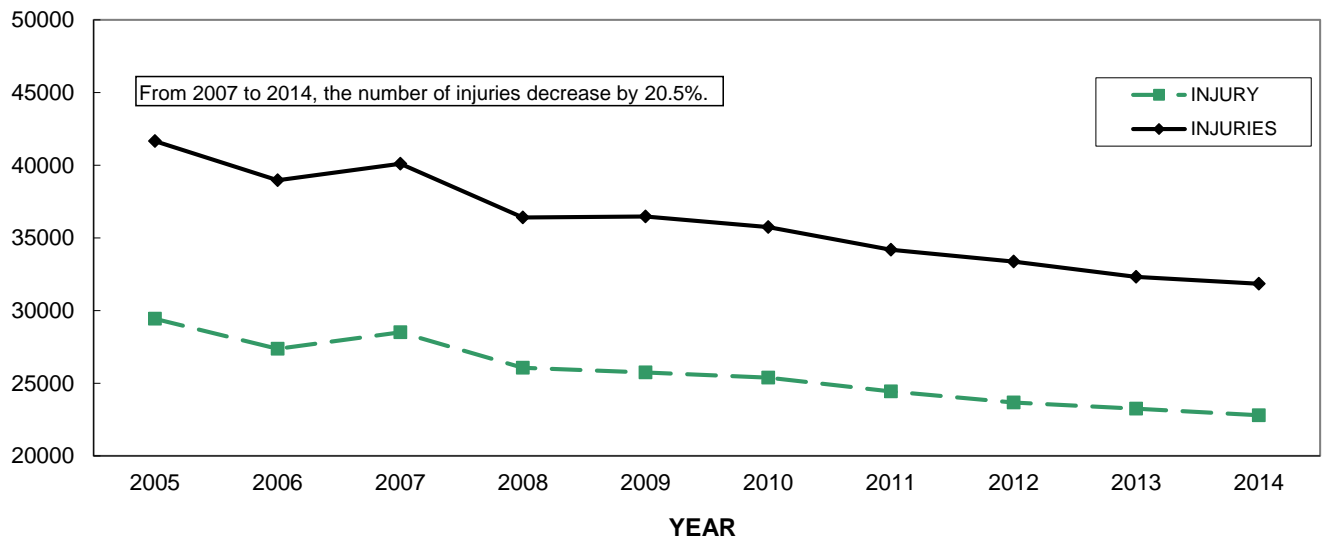
CRASHES, INJURIES AND FATALITIES (2005-2014)

	CRASHES BY SEVERITY (2005-2014)				INJURIES AND FATALITIES (2005-2014)	
	PDO*	INJURY	FATAL	TOTAL*	INJURIES	FATALITIES
2005	49842	29428	262	79532	41654	278
2006	44064	27366	293	71723	38954	311
2007	84286	28507	269	113062	40092	296
2008	77841	26066	280	104187	36405	303
2009	77759	25737	214	103710	36476	227
2010	75931	25391	299	101621	35742	320
2011	53791	24435	209	78435	34186	222
2012	71532	23675	245	95452	33367	261
2013	72312	23249	265	95826	32324	286
2014	73544	22796	234	96574	31842	248
TOTAL	680902	256650	2570	940122	157105	1188

FATAL CRASHES AND FATALITIES



INJURY CRASHES AND INJURIES



* see Data Limitations, page 2

ALL REPORTED CRASHES

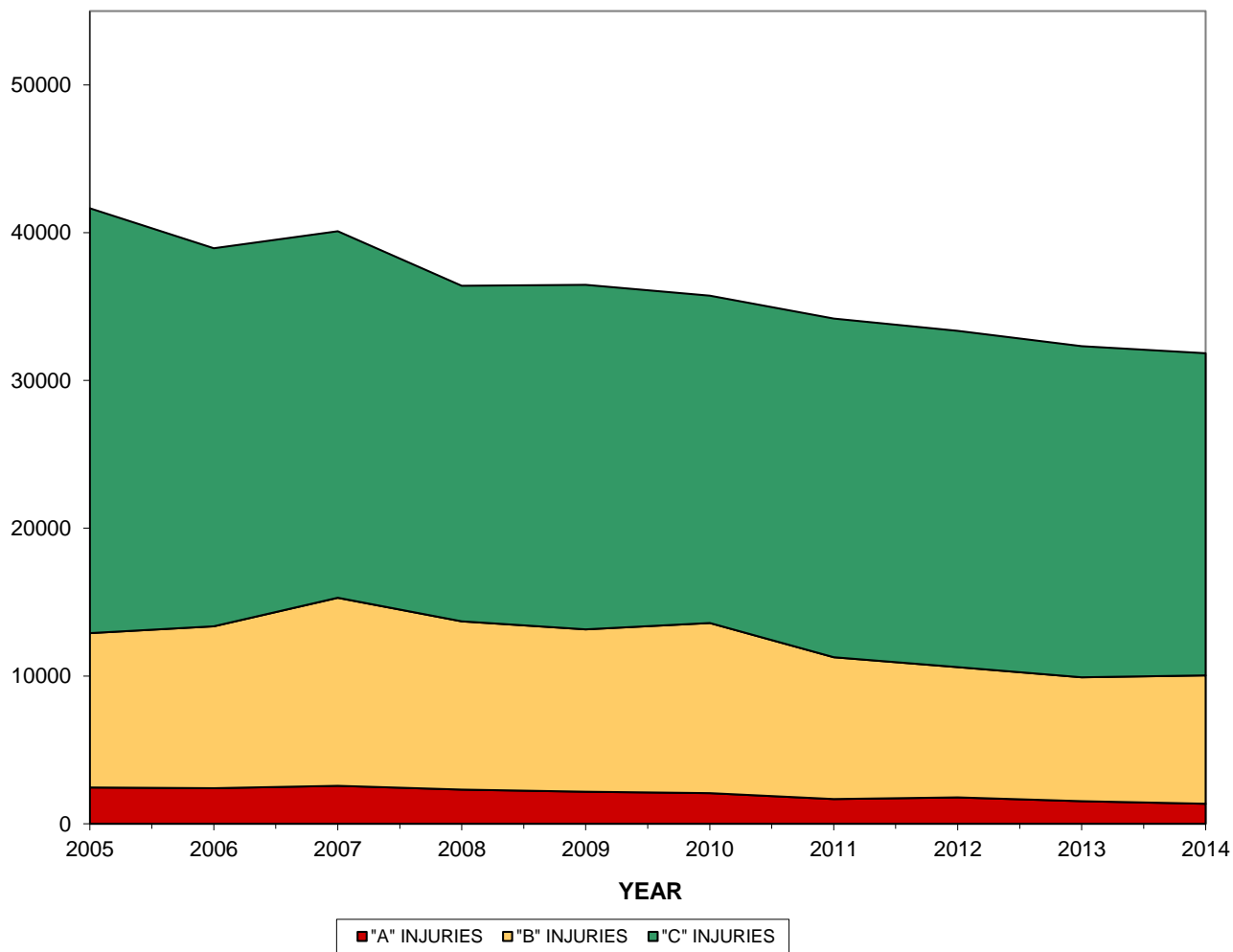
**INJURIES BY SEVERITY
(2005-2014)**

	"A" INJURIES	"B" INJURIES	"C" INJURIES	TOTAL INJURIES
2005	2464	10441	28749	41654
2006	2415	10950	25589	38954
2007	2574	12715	24803	40092
2008	2312	11390	22703	36405
2009	2161	10994	23321	36476
2010	2077	11518	22147	35742
2011	1673	9602	22911	34186
2012	1779	8817	22771	33367
2013	1523	8389	22412	32324
2014	1356	8681	21805	31842
TOTAL	20334	103497	237211	361042



From 2005 to 2014, the number of "A" injuries decreased by 45%.

INJURIES BY SEVERITY



ALL REPORTED CRASHES

CRASH RATES (2005-2014)

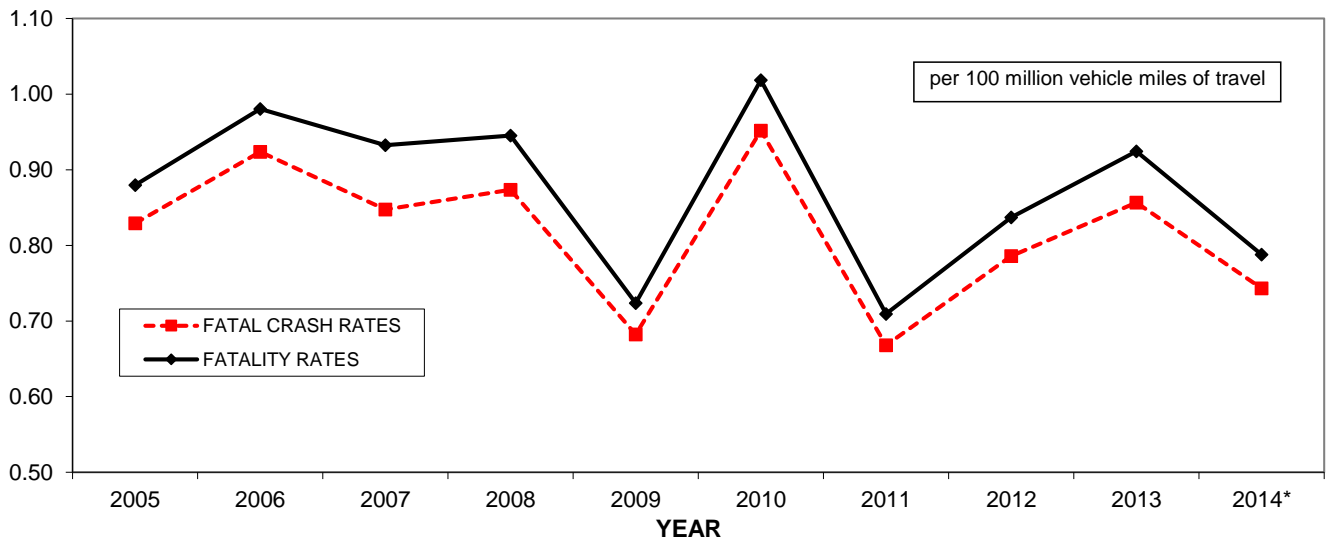
CRASH, INJURY AND FATALITY RATES (2005-2014)

(per 100 million vehicle miles of travel)

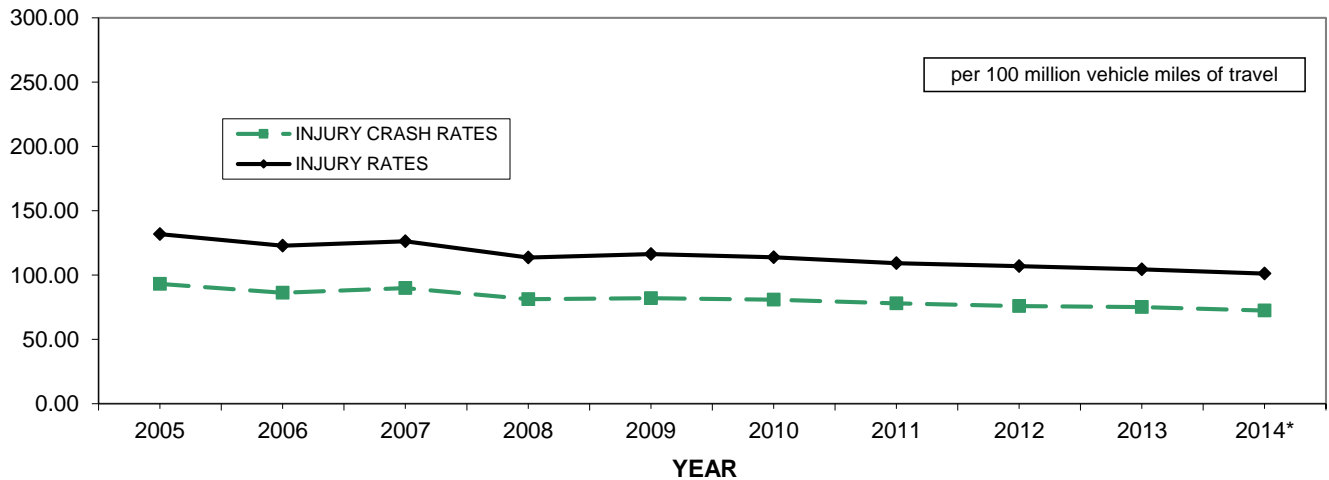
	INJURY CRASH RATES	INJURY RATES	FATAL CRASH RATES	FATALITY RATES	VEHICLE MILES TRAVELED (MILLIONS)
2005	93.14	131.83	0.83	0.88	31.597
2006	86.25	122.78	0.92	0.98	31.727
2007	89.81	126.30	0.85	0.93	31.743
2008	81.32	113.58	0.87	0.95	32.053
2009	82.04	116.27	0.68	0.72	31.373
2010	80.81	113.76	0.95	1.02	31.420
2011	78.08	109.24	0.67	0.71	31.294
2012	75.93	107.02	0.79	0.84	31.179
2013	75.14	104.47	0.86	0.92	30.941
2014*	72.41	101.15	0.74	0.79	31.480

*2014 Vehicle Miles Traveled Data is a Preliminary Estimate and Subject to Change

FATAL CRASH RATES AND FATALITY RATES



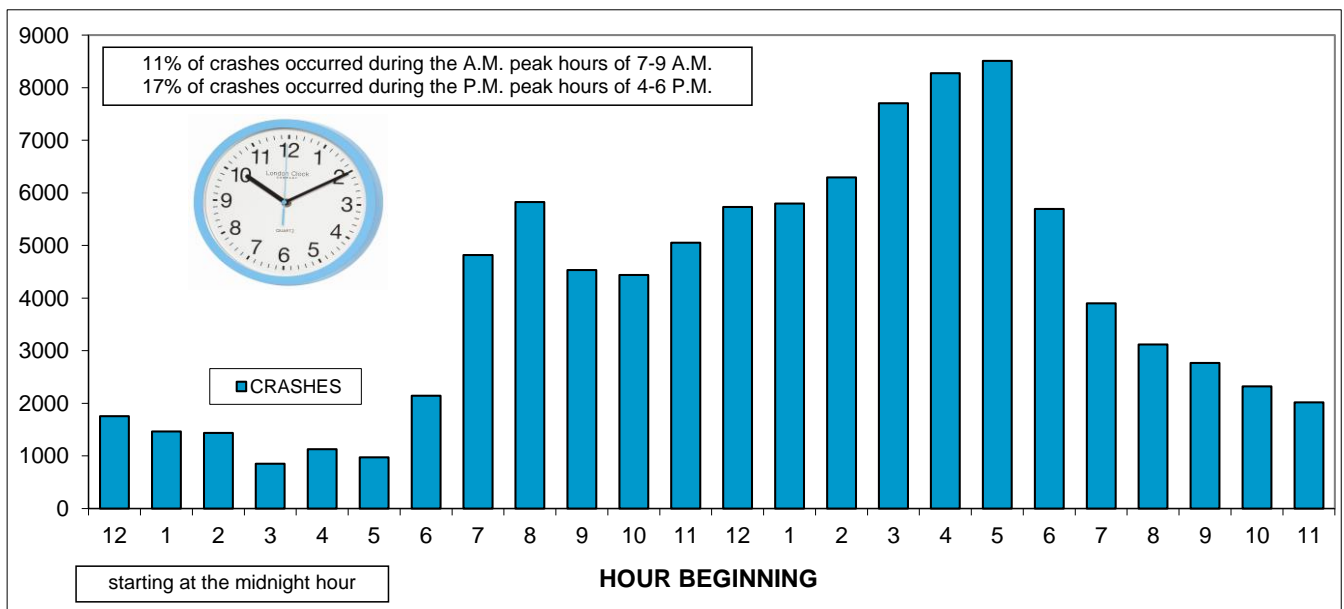
INJURY CRASH RATES AND INJURY RATES



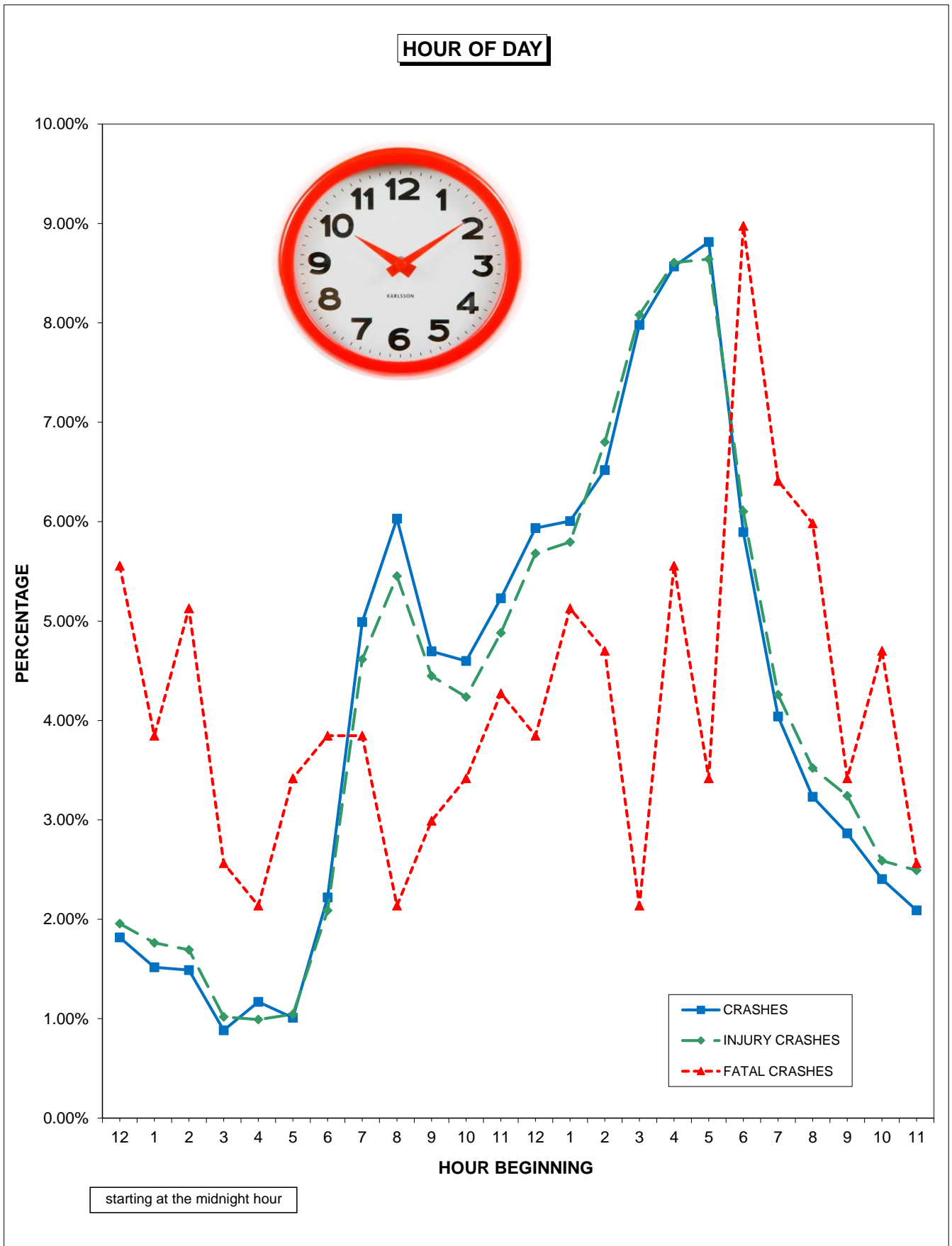
ALL REPORTED CRASHES

2014 CRASHES BY HOUR OF DAY

	CRASHES		INJURY		FATAL	
	CRASHES	%	CRASHES	%	CRASHES	%
MIDNIGHT - 12:59 AM	1755	1.82%	446	1.96%	13	5.56%
1:00 AM - 1:59 AM	1466	1.52%	402	1.76%	9	3.85%
2:00 AM - 2:59 AM	1438	1.49%	386	1.69%	12	5.13%
3:00 AM - 3:59 AM	853	0.88%	232	1.02%	6	2.56%
4:00 AM - 4:59 AM	1130	1.17%	226	0.99%	5	2.14%
5:00 AM - 5:59 AM	975	1.01%	238	1.04%	8	3.42%
6:00 AM - 6:59 AM	2144	2.22%	476	2.09%	9	3.85%
7:00 AM - 7:59 AM	4819	4.99%	1052	4.61%	9	3.85%
8:00 AM - 8:59 AM	5824	6.03%	1243	5.45%	5	2.14%
9:00 AM - 9:59 AM	4535	4.70%	1014	4.45%	7	2.99%
10:00 AM - 10:59 AM	4441	4.60%	966	4.24%	8	3.42%
11:00 AM - 11:59 AM	5051	5.23%	1113	4.88%	10	4.27%
NOON	5732	5.94%	1295	5.68%	9	3.85%
1:00 PM - 1:59 PM	5800	6.01%	1321	5.79%	12	5.13%
2:00 PM - 2:59 PM	6296	6.52%	1550	6.80%	11	4.70%
3:00 PM - 3:59 PM	7705	7.98%	1842	8.08%	5	2.14%
4:00 PM - 4:59 PM	8274	8.57%	1962	8.61%	13	5.56%
5:00 PM - 5:59 PM	8511	8.81%	1970	8.64%	8	3.42%
6:00 PM - 6:59 PM	5694	5.90%	1391	6.10%	21	8.97%
7:00 PM - 7:59 PM	3902	4.04%	971	4.26%	15	6.41%
8:00 PM - 8:59 PM	3121	3.23%	803	3.52%	14	5.98%
9:00 PM - 9:59 PM	2767	2.87%	739	3.24%	8	3.42%
10:00 PM - 10:59 PM	2322	2.40%	590	2.59%	11	4.70%
11:00 PM - 11:59 PM	2019	2.09%	568	2.49%	6	2.56%
TOTAL	96574		22796		234	



ALL REPORTED CRASHES

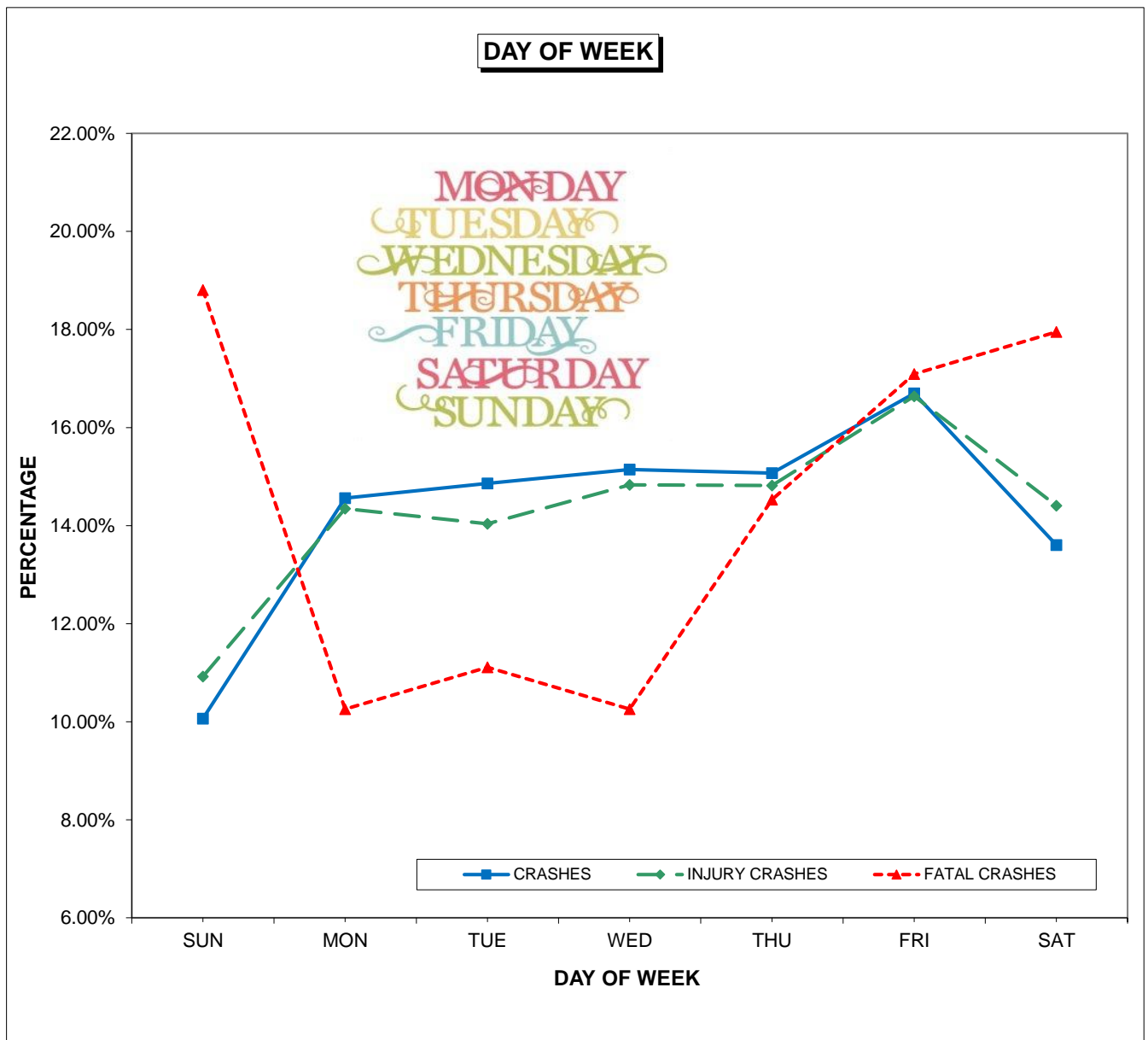


ALL REPORTED CRASHES

2014 CRASHES BY DAY OF WEEK

	CRASHES		INJURY		FATAL	
	CRASHES	%	CRASHES	%	CRASHES	%
SUNDAY	9719	10.06%	2490	10.92%	44	18.80%
MONDAY	14063	14.56%	3270	14.34%	24	10.26%
TUESDAY	14350	14.86%	3200	14.04%	26	11.11%
WEDNESDAY	14624	15.14%	3381	14.83%	24	10.26%
THURSDAY	14554	15.07%	3378	14.82%	34	14.53%
FRIDAY	16125	16.70%	3793	16.64%	40	17.09%
SATURDAY	13139	13.61%	3284	14.41%	42	17.95%
TOTAL	96574		22796		234	

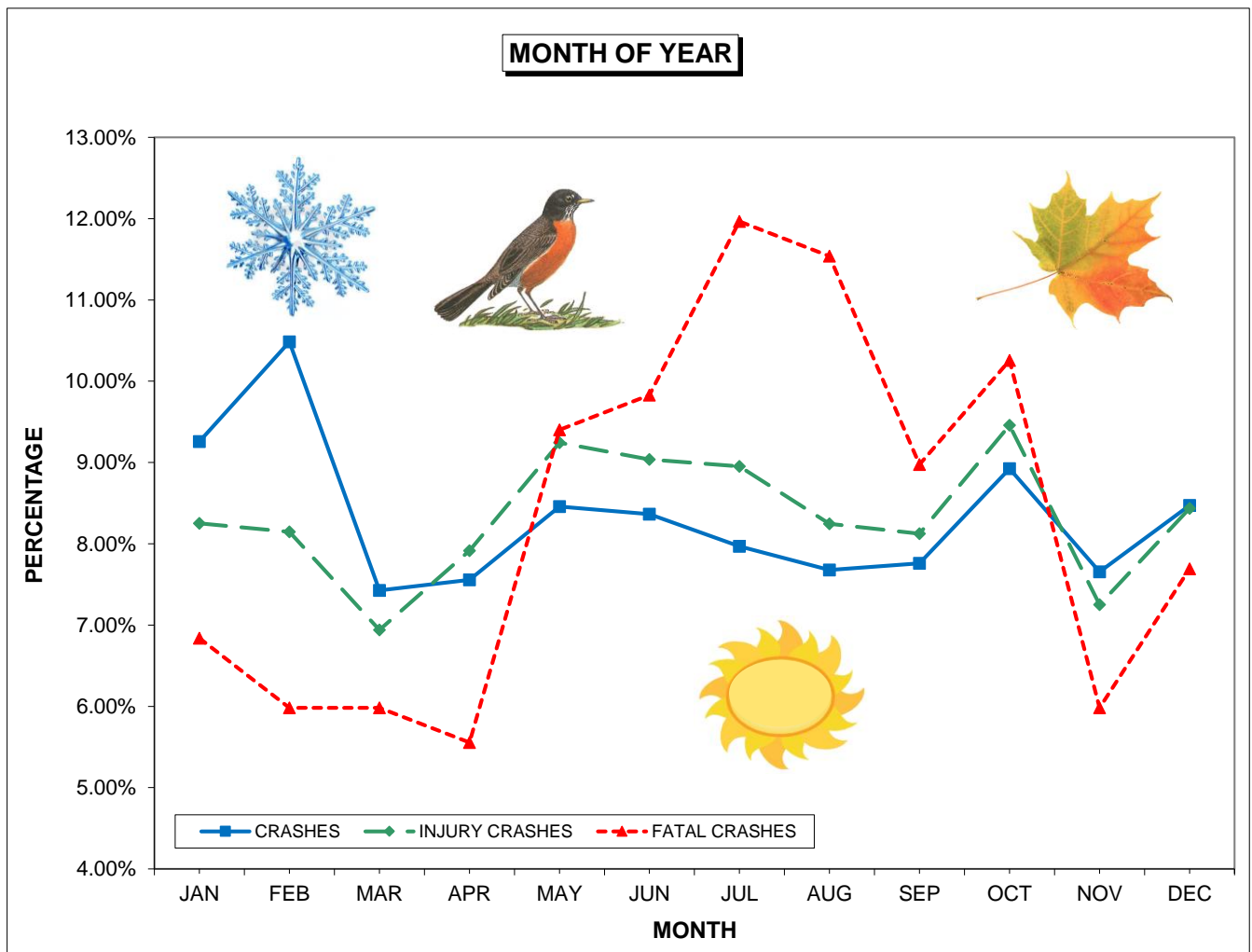
17% of crashes occurred on Friday.



ALL REPORTED CRASHES

2014 CRASHES BY MONTH OF YEAR

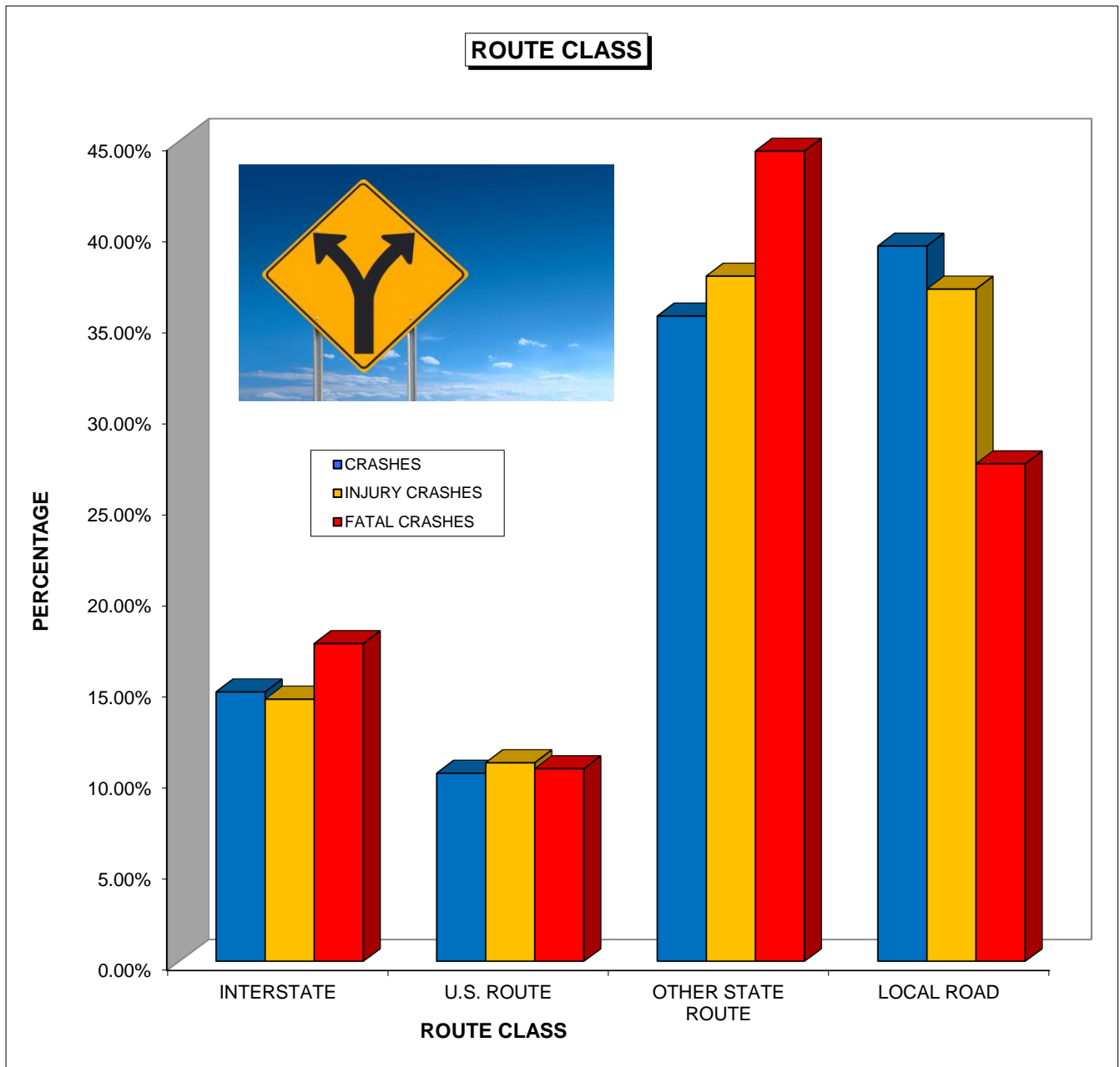
	CRASHES		INJURY		FATAL	
	CRASHES	%	CRASHES	%	CRASHES	%
JANUARY	8940	9.26%	1881	8.25%	16	6.84%
FEBRUARY	10125	10.48%	1857	8.15%	14	5.98%
MARCH	7172	7.43%	1582	6.94%	14	5.98%
APRIL	7296	7.55%	1804	7.91%	13	5.56%
MAY	8168	8.46%	2107	9.24%	22	9.40%
JUNE	8077	8.36%	2060	9.04%	23	9.83%
JULY	7696	7.97%	2041	8.95%	28	11.97%
AUGUST	7415	7.68%	1880	8.25%	27	11.54%
SEPTEMBER	7494	7.76%	1852	8.12%	21	8.97%
OCTOBER	8617	8.92%	2156	9.46%	24	10.26%
NOVEMBER	7392	7.65%	1653	7.25%	14	5.98%
DECEMBER	8182	8.47%	1923	8.44%	18	7.69%
TOTAL	96574		22796		234	



ALL REPORTED CRASHES

2014 CRASHES BY ROUTE CLASS

	CRASHES		INJURY		FATAL	
	CRASHES	%	CRASHES	%	CRASHES	%
INTERSTATE	14370	14.88%	3301	14.48%	41	17.52%
U.S. ROUTE	10077	10.43%	2509	11.01%	25	10.68%
OTHER STATE ROUTE	34216	35.43%	8574	37.61%	104	44.44%
LOCAL ROAD	37911	39.26%	8412	36.90%	64	27.35%
TOTAL	96574		22796		234	



ALL REPORTED CRASHES

2014 INTERSTATE CRASHES BY SEVERITY

	PDO	INJURY	FATAL	TOTAL
I-84	3483	920	8	4411
I-91	2308	740	8	3056
I-95	4389	1379	18	5786
I-291	103	29	0	132
I-384	89	39	2	130
I-395	475	115	4	594
I-684	1	0	0	1
I-691	180	79	1	260
TOTAL	11028	3301	41	14370

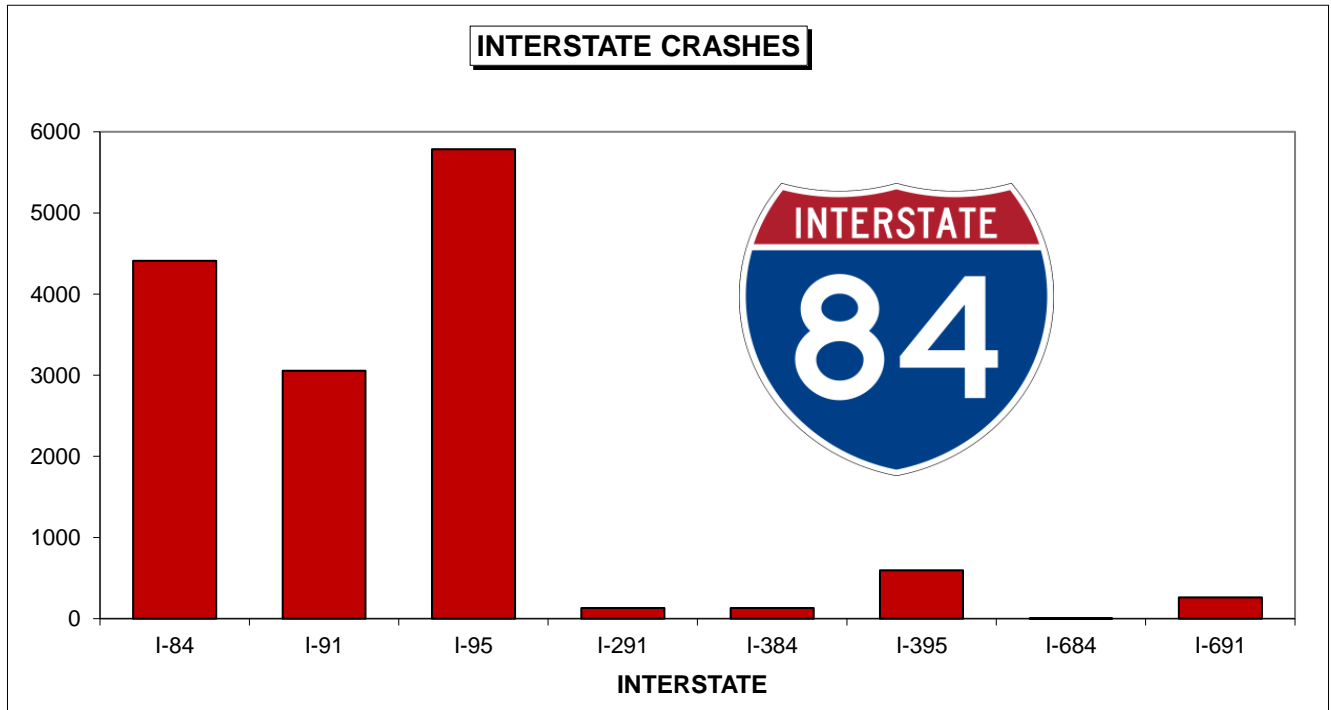


40% of interstate crashes occurred on I-95.

2014 INTERSTATE INJURIES AND FATALITIES



	INJURIES	FATALITIES
I-84	1353	8
I-91	1035	8
I-95	1999	20
I-291	45	0
I-384	48	2
I-395	161	4
I-684	0	0
I-691	109	1
TOTAL	4750	43



ALL REPORTED CRASHES

ENVIRONMENTAL CONDITIONS

2014 CRASHES BY ROAD SURFACE CONDITION

	CRASHES		INJURY		FATAL	
	CRASHES	%	CRASHES	%	CRASHES	%
DRY	71408	73.94%	17387	76.27%	195	83.33%
WET	15064	15.60%	3689	16.18%	31	13.25%
SNOW/SLUSH	6454	6.68%	1006	4.41%	1	0.43%
ICE	2465	2.55%	472	2.07%	4	1.71%
SAND, MUD, DIRT OR OIL	251	0.26%	83	0.36%	0	0.00%
UNKNOWN OR OTHER	932	0.97%	159	0.70%	3	1.28%
TOTAL	96574		22796		234	

74% of crashes and 83% of fatal crashes occurred on dry pavement.



2014 CRASHES BY WEATHER CONDITION

	CRASHES		INJURY		FATAL	
	CRASHES	%	CRASHES	%	CRASHES	%
CLEAR (NO ADVERSE CONDITIONS)	77738	80.50%	18774	82.36%	206	88.03%
RAIN	11069	11.46%	2675	11.73%	21	8.97%
SLEET, HAIL	619	0.64%	110	0.48%	1	0.43%
SNOW	4975	5.15%	814	3.57%	0	0.00%
FOG	265	0.27%	81	0.36%	2	0.85%
BLOWING SAND, SOIL, DIRT OR SNOW	362	0.37%	57	0.25%	0	0.00%
SEVERE CROSSWINDS	24	0.02%	2	0.01%	0	0.00%
UNKNOWN OR OTHER	1522	1.58%	283	1.24%	4	1.71%
TOTAL	96574		22796		234	

80.5% of crashes and 88% of fatal crashes occurred under clear conditions.

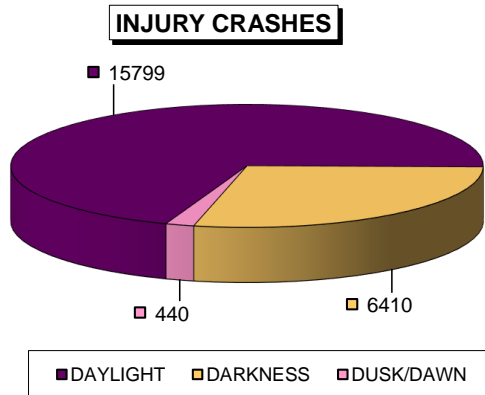
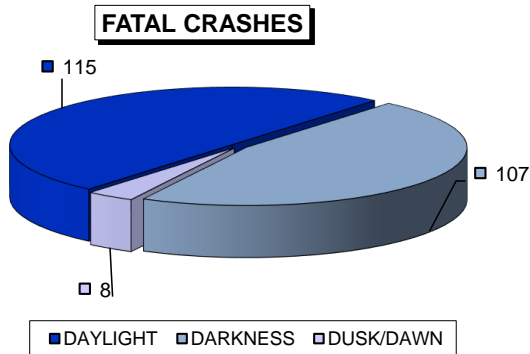
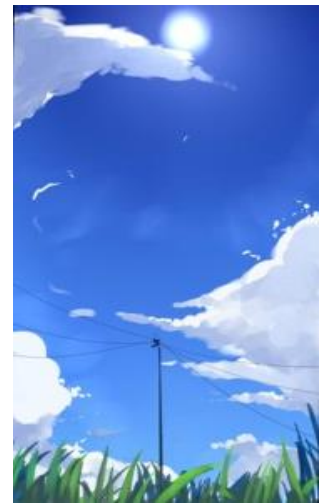
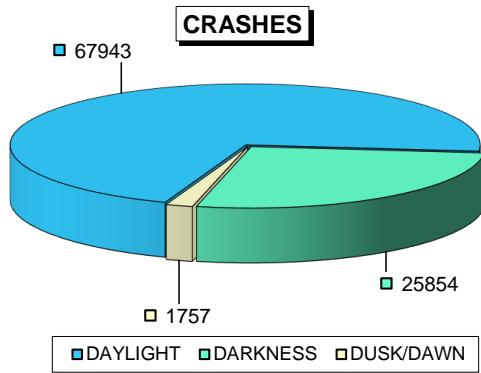


ALL REPORTED CRASHES

2014 CRASHES BY LIGHT CONDITION

	CRASHES		INJURY		FATAL	
	CRASHES	%	CRASHES	%	CRASHES	%
DAYLIGHT	67943	70.35%	15799	69.31%	115	49.15%
DARK - NO ILLUMINATION	6852	7.10%	1606	7.05%	42	17.95%
DARK - ILLUMINATION	19002	19.68%	4804	21.07%	65	27.78%
DAWN	576	0.60%	146	0.64%	3	1.28%
DUSK	1181	1.22%	294	1.29%	5	2.14%
UNKNOWN	1020	1.06%	147	0.64%	4	1.71%
TOTAL	96574		22796		234	

27% of crashes and 46% of fatal crashes occurred during darkness.



ALL REPORTED CRASHES

2014 CRASHES BY TOWN AND COUNTY OF OCCURRENCE

	CRASHES		INJURY		FATAL	
	CRASHES	%	CRASHES	%	CRASHES	%
ANDOVER	49	0.05%	10	0.04%	1	0.43%
ANSONIA	282	0.29%	74	0.32%	0	0.00%
ASHFORD	53	0.05%	8	0.04%	0	0.00%
AVON	187	0.19%	36	0.16%	0	0.00%
BARKHAMSTED	76	0.08%	19	0.08%	1	0.43%
BEACON FALLS	89	0.09%	25	0.11%	1	0.43%
BERLIN	676	0.70%	159	0.70%	2	0.85%
BETHANY	83	0.09%	35	0.15%	0	0.00%
BETHEL	430	0.45%	76	0.33%	1	0.43%
BETHLEHEM	31	0.03%	4	0.02%	0	0.00%
BLOOMFIELD	594	0.62%	154	0.68%	5	2.14%
BOLTON	98	0.10%	25	0.11%	2	0.85%
BOZRAH	50	0.05%	6	0.03%	1	0.43%
BRANFORD	712	0.74%	201	0.88%	1	0.43%
BRIDGEPORT	4,561	4.72%	1,265	5.55%	9	3.85%
BRIDGEWATER	24	0.02%	7	0.03%	0	0.00%
BRISTOL	1,633	1.69%	369	1.62%	1	0.43%
BROOKFIELD	419	0.43%	88	0.39%	2	0.85%
BROOKLYN	111	0.11%	35	0.15%	1	0.43%
BURLINGTON	110	0.11%	27	0.12%	0	0.00%
CANAAN	22	0.02%	6	0.03%	0	0.00%
CANTERBURY	71	0.07%	22	0.10%	0	0.00%
CANTON	150	0.16%	28	0.12%	0	0.00%
CHAPLIN	37	0.04%	10	0.04%	1	0.43%
CHESHIRE	491	0.51%	104	0.46%	2	0.85%
CHESTER	49	0.05%	11	0.05%	0	0.00%
CLINTON	249	0.26%	61	0.27%	1	0.43%
COLCHESTER	230	0.24%	43	0.19%	1	0.43%
COLEBROOK	28	0.03%	5	0.02%	1	0.43%
COLUMBIA	91	0.09%	24	0.11%	1	0.43%
CORNWALL	28	0.03%	5	0.02%	0	0.00%
COVENTRY	130	0.13%	24	0.11%	1	0.43%
CROMWELL	500	0.52%	118	0.52%	1	0.43%
DANBURY	3,034	3.14%	618	2.71%	3	1.28%
DARIEN	712	0.74%	155	0.68%	1	0.43%
DEEP RIVER	70	0.07%	14	0.06%	0	0.00%
DERBY	531	0.55%	108	0.47%	0	0.00%
DURHAM	156	0.16%	42	0.18%	0	0.00%
EASTFORD	29	0.03%	9	0.04%	0	0.00%
EAST GRANBY	143	0.15%	36	0.16%	1	0.43%
EAST HADDAM	91	0.09%	22	0.10%	1	0.43%
EAST HAMPTON	156	0.16%	55	0.24%	1	0.43%
EAST HARTFORD	1,715	1.78%	420	1.84%	7	2.99%
EAST HAVEN	625	0.65%	179	0.79%	2	0.85%

ALL REPORTED CRASHES

2014 - TOWN OF OCCURRENCE (continued)

	CRASHES		INJURY		FATAL	
	CRASHES	%	CRASHES	%	CRASHES	%
EAST LYME	365	0.38%	72	0.32%	2	0.85%
EASTON	155	0.16%	34	0.15%	0	0.00%
EAST WINDSOR	347	0.36%	98	0.43%	0	0.00%
ELLINGTON	190	0.20%	62	0.27%	2	0.85%
ENFIELD	799	0.83%	199	0.87%	3	1.28%
ESSEX	89	0.09%	19	0.08%	1	0.43%
FAIRFIELD	1,532	1.59%	354	1.55%	2	0.85%
FARMINGTON	950	0.98%	186	0.82%	3	1.28%
FRANKLIN	63	0.07%	15	0.07%	1	0.43%
GLASTONBURY	775	0.80%	168	0.74%	0	0.00%
GOSHEN	44	0.05%	11	0.05%	1	0.43%
GRANBY	168	0.17%	30	0.13%	1	0.43%
GREENWICH	1,977	2.05%	337	1.48%	0	0.00%
GRISWOLD	184	0.19%	44	0.19%	0	0.00%
GROTON	908	0.94%	153	0.67%	0	0.00%
GUILFORD	464	0.48%	77	0.34%	2	0.85%
HADDAM	181	0.19%	46	0.20%	0	0.00%
HAMDEN	1,444	1.50%	330	1.45%	2	0.85%
HAMPTON	32	0.03%	5	0.02%	0	0.00%
HARTFORD	6,179	6.40%	1,546	6.78%	3	1.28%
HARTLAND	22	0.02%	9	0.04%	0	0.00%
HARWINTON	114	0.12%	18	0.08%	1	0.43%
HEBRON	102	0.11%	33	0.14%	3	1.28%
KENT	47	0.05%	17	0.07%	0	0.00%
KILLINGLY	317	0.33%	73	0.32%	4	1.71%
KILLINGWORTH	67	0.07%	23	0.10%	1	0.43%
LEBANON	95	0.10%	27	0.12%	1	0.43%
LEDYARD	254	0.26%	60	0.26%	3	1.28%
LISBON	88	0.09%	17	0.07%	0	0.00%
LITCHFIELD	201	0.21%	45	0.20%	2	0.85%
LYME	29	0.03%	8	0.04%	0	0.00%
MADISON	297	0.31%	77	0.34%	0	0.00%
MANCHESTER	1,770	1.83%	433	1.90%	5	2.14%
MANSFIELD	400	0.41%	71	0.31%	2	0.85%
MARLBOROUGH	122	0.13%	27	0.12%	2	0.85%
MERIDEN	1,713	1.77%	487	2.14%	3	1.28%
MIDDLEBURY	295	0.31%	66	0.29%	2	0.85%
MIDDLEFIELD	77	0.08%	25	0.11%	0	0.00%
MIDDLETOWN	633	0.66%	221	0.97%	4	1.71%
MILFORD	992	1.03%	313	1.37%	4	1.71%
MONROE	444	0.46%	90	0.39%	1	0.43%
MONTVILLE	446	0.46%	90	0.39%	2	0.85%
MORRIS	31	0.03%	6	0.03%	1	0.43%
NAUGATUCK	685	0.71%	118	0.52%	1	0.43%

ALL REPORTED CRASHES

2014 - TOWN OF OCCURRENCE (continued)

	CRASHES	%	INJURY CRASHES	%	FATAL CRASHES	%
NEW BRITAIN	1,175	1.22%	303	1.33%	4	1.71%
NEW CANAAN	434	0.45%	92	0.40%	1	0.43%
NEW FAIRFIELD	144	0.15%	35	0.15%	0	0.00%
NEW HARTFORD	129	0.13%	31	0.14%	1	0.43%
NEW HAVEN	6,661	6.90%	1,665	7.30%	11	4.70%
NEWINGTON	855	0.89%	208	0.91%	2	0.85%
NEW LONDON	854	0.88%	197	0.86%	2	0.85%
NEW MILFORD	562	0.58%	141	0.62%	2	0.85%
NEWTOWN	445	0.46%	124	0.54%	1	0.43%
NORFOLK	33	0.03%	8	0.04%	0	0.00%
NORTH BRANFORD	242	0.25%	53	0.23%	2	0.85%
NORTH CANAAN	62	0.06%	18	0.08%	0	0.00%
NORTH HAVEN	990	1.03%	232	1.02%	2	0.85%
NORTH STONINGTON	147	0.15%	43	0.19%	1	0.43%
NORWALK	3,303	3.42%	623	2.73%	4	1.71%
NORWICH	1,213	1.26%	232	1.02%	3	1.28%
OLD LYME	154	0.16%	33	0.14%	1	0.43%
OLD SAYBROOK	300	0.31%	55	0.24%	1	0.43%
ORANGE	973	1.01%	247	1.08%	3	1.28%
OXFORD	183	0.19%	42	0.18%	0	0.00%
PLAINFIELD	252	0.26%	76	0.33%	1	0.43%
PLAINVILLE	653	0.68%	170	0.75%	1	0.43%
PLYMOUTH	231	0.24%	50	0.22%	0	0.00%
POMFRET	52	0.05%	13	0.06%	1	0.43%
PORTLAND	118	0.12%	30	0.13%	1	0.43%
PRESTON	152	0.16%	41	0.18%	1	0.43%
PROSPECT	169	0.17%	36	0.16%	1	0.43%
PUTNAM	215	0.22%	48	0.21%	1	0.43%
REDDING	167	0.17%	31	0.14%	0	0.00%
RIDGEFIELD	483	0.50%	56	0.25%	1	0.43%
ROCKY HILL	526	0.54%	130	0.57%	0	0.00%
ROXBURY	45	0.05%	5	0.02%	1	0.43%
SALEM	67	0.07%	15	0.07%	1	0.43%
SALISBURY	77	0.08%	22	0.10%	0	0.00%
SCOTLAND	22	0.02%	7	0.03%	0	0.00%
SEYMOUR	465	0.48%	106	0.46%	1	0.43%
SHARON	52	0.05%	11	0.05%	0	0.00%
SHELTON	676	0.70%	155	0.68%	1	0.43%
SHERMAN	36	0.04%	9	0.04%	0	0.00%
SIMSBURY	352	0.36%	73	0.32%	0	0.00%
SOMERS	125	0.13%	28	0.12%	1	0.43%
SOUTHBURY	442	0.46%	108	0.47%	1	0.43%
SOUTHINGTON	1,037	1.07%	229	1.00%	3	1.28%
SOUTH WINDSOR	400	0.41%	118	0.52%	2	0.85%

ALL REPORTED CRASHES

2014 - TOWN OF OCCURRENCE (continued)

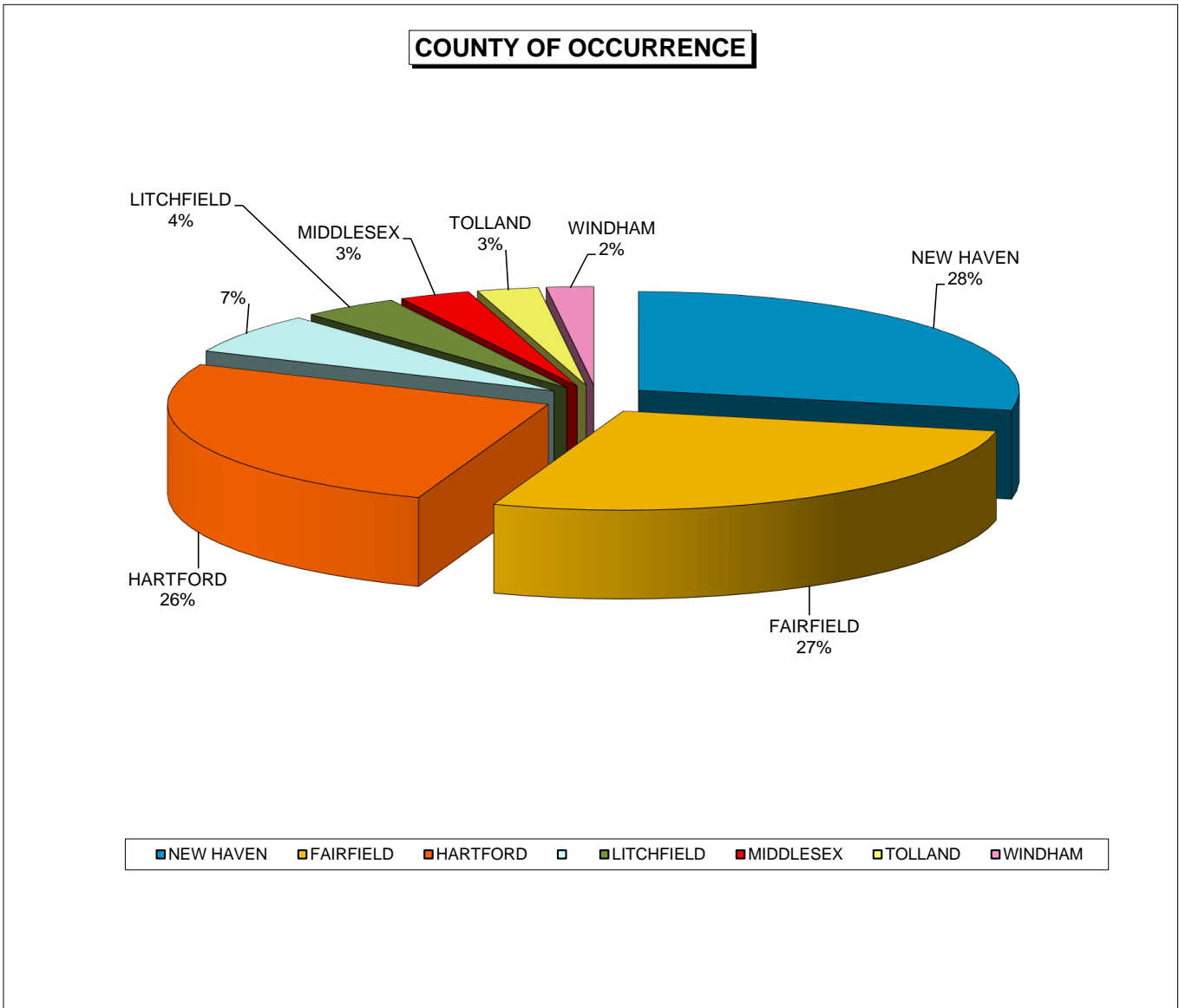
	CRASHES	%	INJURY CRASHES	%	FATAL CRASHES	%
SPRAGUE	29	0.03%	8	0.04%	1	0.43%
STAFFORD	144	0.15%	32	0.14%	0	0.00%
STAMFORD	3,158	3.27%	698	3.06%	10	4.27%
STERLING	40	0.04%	7	0.03%	0	0.00%
STONINGTON	508	0.53%	93	0.41%	4	1.71%
STRATFORD	1,482	1.53%	343	1.50%	2	0.85%
SUFFIELD	195	0.20%	42	0.18%	3	1.28%
THOMASTON	221	0.23%	51	0.22%	0	0.00%
THOMPSON	148	0.15%	41	0.18%	2	0.85%
TOLLAND	265	0.27%	67	0.29%	1	0.43%
TORRINGTON	889	0.92%	197	0.86%	3	1.28%
TRUMBULL	874	0.91%	213	0.93%	2	0.85%
UNION	54	0.06%	15	0.07%	0	0.00%
VERNON	754	0.78%	192	0.84%	2	0.85%
VOLUNTOWN	34	0.04%	11	0.05%	0	0.00%
WALLINGFORD	1,306	1.35%	359	1.57%	3	1.28%
WARREN	16	0.02%	2	0.01%	0	0.00%
WASHINGTON	61	0.06%	12	0.05%	0	0.00%
WATERBURY	4,841	5.01%	1,238	5.43%	6	2.56%
WATERFORD	541	0.56%	115	0.50%	2	0.85%
WATERTOWN	506	0.52%	105	0.46%	2	0.85%
WESTBROOK	180	0.19%	40	0.18%	1	0.43%
WEST HARTFORD	1,695	1.76%	459	2.01%	4	1.71%
WEST HAVEN	1,758	1.82%	448	1.97%	0	0.00%
WESTON	66	0.07%	23	0.10%	0	0.00%
WESTPORT	1,272	1.32%	280	1.23%	1	0.43%
WETHERSFIELD	832	0.86%	166	0.73%	1	0.43%
WILLINGTON	130	0.13%	22	0.10%	2	0.85%
WILTON	512	0.53%	84	0.37%	1	0.43%
WINCHESTER	257	0.27%	50	0.22%	0	0.00%
WINDHAM	475	0.49%	91	0.40%	2	0.85%
WINDSOR	895	0.93%	199	0.87%	0	0.00%
WINDSOR LOCKS	265	0.27%	54	0.24%	0	0.00%
WOLCOTT	250	0.26%	72	0.32%	0	0.00%
WOODBIDGE	312	0.32%	80	0.35%	0	0.00%
WOODBURY	162	0.17%	37	0.16%	0	0.00%
WOODSTOCK	81	0.08%	19	0.08%	1	0.43%
TOTAL	96574		22796		234	

ALL REPORTED CRASHES

2014 CRASHES BY COUNTY OF OCCURRENCE

	CRASHES		INJURY		FATAL	
	CRASHES	%	CRASHES	%	CRASHES	%
NEW HAVEN	27295	28.26%	6880	30.18%	50	21.37%
FAIRFIELD	26316	27.25%	5783	25.37%	43	18.38%
HARTFORD	25220	26.11%	6076	26.65%	53	22.65%
NEW LONDON	6411	6.64%	1323	5.80%	27	11.54%
LITCHFIELD	3949	4.09%	883	3.87%	16	6.84%
MIDDLESEX	2916	3.02%	782	3.43%	13	5.56%
TOLLAND	2532	2.62%	605	2.65%	18	7.69%
WINDHAM	1935	2.00%	464	2.04%	14	5.98%
TOTAL	96574		22796		234	

82% of crashes occurred in Fairfield, Hartford or New Haven County.



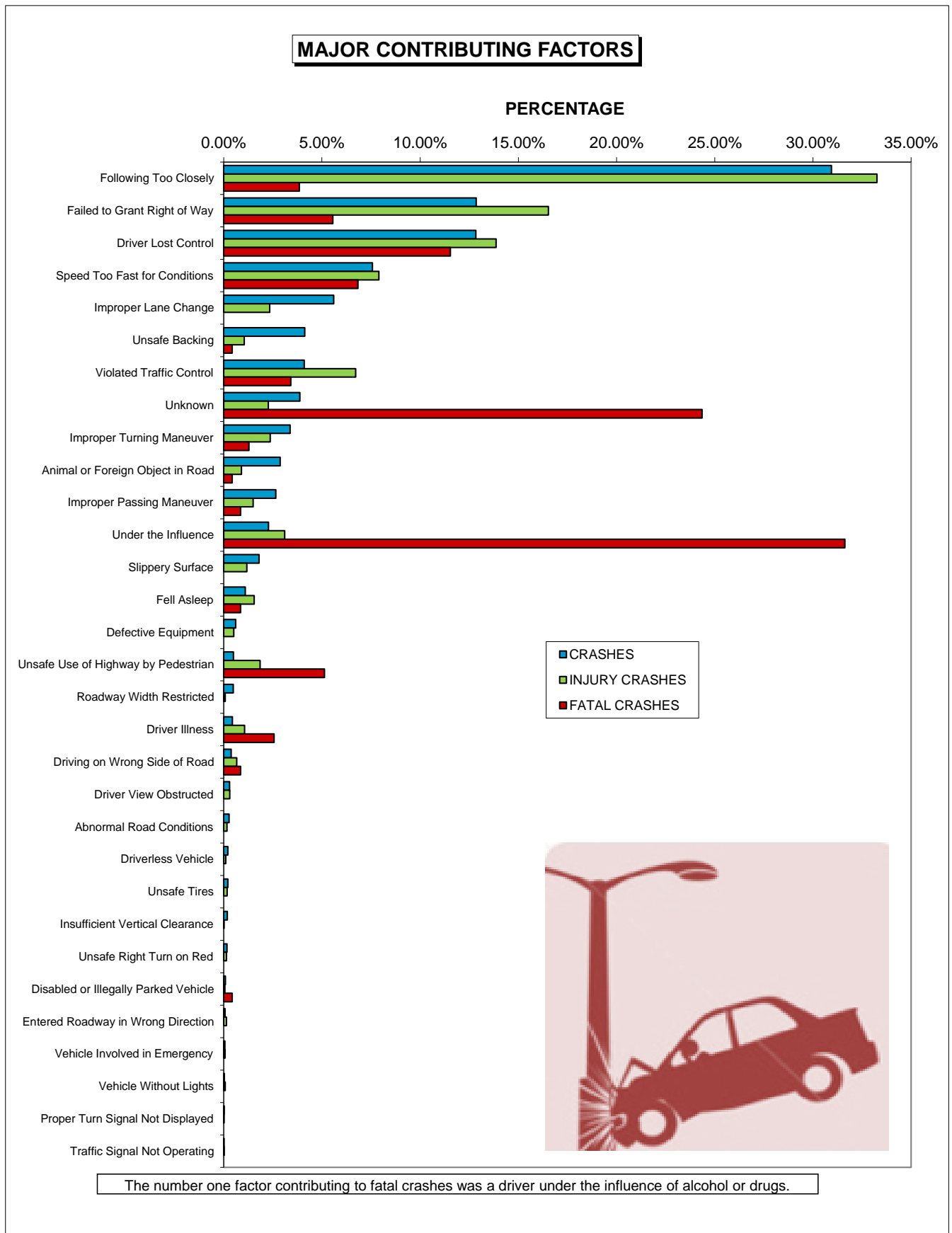
ALL REPORTED CRASHES

2014 CRASHES BY CONTRIBUTING FACTORS

	CRASHES	%	INJURY CRASHES	%	FATAL CRASHES	%
Following Too Closely	29881	30.94%	7583	33.26%	9	3.85%
Failed to Grant Right of Way	12411	12.85%	3769	16.53%	13	5.56%
Driver Lost Control	12401	12.84%	3162	13.87%	27	11.54%
Speed Too Fast for Conditions	7312	7.57%	1801	7.90%	16	6.84%
Improper Lane Change	5407	5.60%	533	2.34%	0	0.00%
Unsafe Backing	3982	4.12%	239	1.05%	1	0.43%
Violated Traffic Control	3959	4.10%	1531	6.72%	8	3.42%
Unknown	3743	3.88%	518	2.27%	57	24.36%
Improper Turning Maneuver	3267	3.38%	540	2.37%	3	1.28%
Animal or Foreign Object in Road	2773	2.87%	206	0.90%	1	0.43%
Improper Passing Maneuver	2559	2.65%	342	1.50%	2	0.85%
Under the Influence	2199	2.28%	707	3.10%	74	31.62%
Slippery Surface	1739	1.80%	268	1.18%	0	0.00%
Fell Asleep	1063	1.10%	353	1.55%	2	0.85%
Defective Equipment	590	0.61%	116	0.51%	0	0.00%
Unsafe Use of Highway by Pedestrian	480	0.50%	423	1.86%	12	5.13%
Roadway Width Restricted	466	0.48%	18	0.08%	0	0.00%
Driver Illness	425	0.44%	243	1.07%	6	2.56%
Driving on Wrong Side of Road	361	0.37%	150	0.66%	2	0.85%
Driver View Obstructed	286	0.30%	71	0.31%	0	0.00%
Abnormal Road Conditions	263	0.27%	38	0.17%	0	0.00%
Driverless Vehicle	202	0.21%	24	0.11%	0	0.00%
Unsafe Tires	198	0.21%	40	0.18%	0	0.00%
Insufficient Vertical Clearance	173	0.18%	3	0.01%	0	0.00%
Unsafe Right Turn on Red	158	0.16%	31	0.14%	0	0.00%
Disabled or Illegally Parked Vehicle	84	0.09%	13	0.06%	1	0.43%
Entered Roadway in Wrong Direction	67	0.07%	32	0.14%	0	0.00%
Vehicle Involved in Emergency	59	0.06%	15	0.07%	0	0.00%
Vehicle Without Lights	30	0.03%	18	0.08%	0	0.00%
Proper Turn Signal Not Displayed	24	0.02%	4	0.02%	0	0.00%
Traffic Signal Not Operating	12	0.01%	5	0.02%	0	0.00%
TOTAL	96574		22796		234	



ALL REPORTED CRASHES



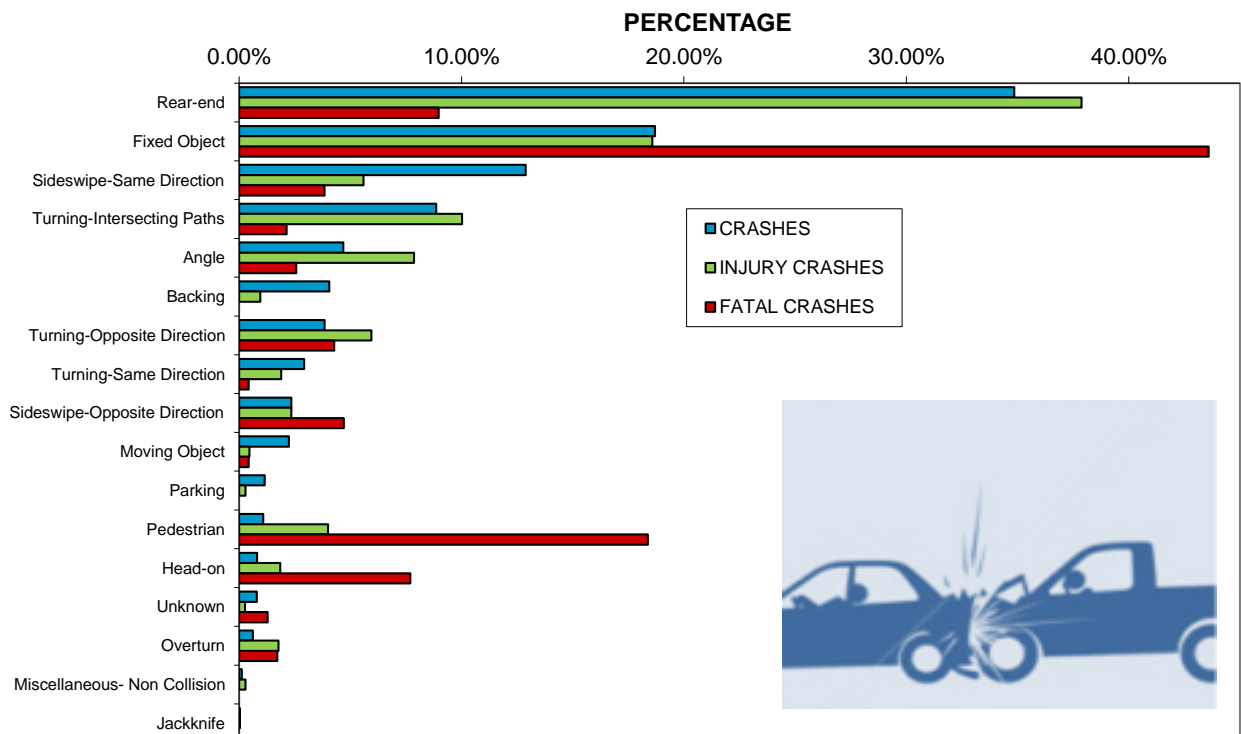
ALL REPORTED CRASHES

2014 CRASHES BY TYPE OF COLLISION

	CRASHES		INJURY		FATAL	
	CRASHES	%	CRASHES	%	CRASHES	%
Rear-end	33,656	34.85%	8,635	37.88%	21	8.97%
Fixed Object	18,058	18.70%	4,234	18.57%	102	43.59%
Sideswipe-Same Direction	12,442	12.88%	1,275	5.59%	9	3.85%
Turning-Intersecting Paths	8,562	8.87%	2,285	10.02%	5	2.14%
Angle	4,526	4.69%	1,792	7.86%	6	2.56%
Backing	3,910	4.05%	217	0.95%	0	0.00%
Turning-Opposite Direction	3,713	3.84%	1,355	5.94%	10	4.27%
Turning-Same Direction	2,822	2.92%	432	1.90%	1	0.43%
Sideswipe-Opposite Direction	2,269	2.35%	534	2.34%	11	4.70%
Moving Object	2,162	2.24%	106	0.46%	1	0.43%
Parking	1,111	1.15%	66	0.29%	0	0.00%
Pedestrian	1,044	1.08%	910	3.99%	43	18.38%
Head-on	778	0.81%	421	1.85%	18	7.69%
Unknown	766	0.79%	59	0.26%	3	1.28%
Overturn	602	0.62%	403	1.77%	4	1.71%
Miscellaneous- Non Collision	119	0.12%	64	0.28%	0	0.00%
Jackknife	34	0.04%	8	0.04%	0	0.00%
TOTAL	96574		22796		234	

Fixed object collisions accounted for 44% of fatal crashes.

MAJOR TYPES OF COLLISION



ALL REPORTED CRASHES

2014 CRASHES BY VEHICLE TYPE

	CRASHES	%	INJURY CRASHES	%	FATAL CRASHES	%
AUTOMOBILE	90562	76.14%	21324	76.24%	172	57.72%
SINGLE UNIT TRUCK (2 AXLE, 4 TIRE)	11502	9.67%	2390	8.55%	27	9.06%
PASSENGER VAN	3759	3.16%	911	3.26%	9	3.02%
TRACTOR SEMI-TRAILER	2271	1.91%	362	1.29%	8	2.68%
SINGLE UNIT TRUCK (2 AXLE, 6 TIRE)	2103	1.77%	349	1.25%	8	2.68%
UNKNOWN OR OTHER	2011	1.69%	226	0.81%	6	2.01%
MOTORCYCLE	1268	1.07%	907	3.24%	47	15.77%
SINGLE UNIT TRUCK (3 OR MORE AXLES)	842	0.71%	142	0.51%	4	1.34%
SCHOOL BUS	832	0.70%	98	0.35%	1	0.34%
COMMERCIAL BUS	745	0.63%	131	0.47%	0	0.00%
EMERGENCY VEHICLE	710	0.60%	162	0.58%	0	0.00%
PEDALCYCLE	644	0.54%	515	1.84%	4	1.34%
TRUCK-TRAILER COMBO.	632	0.53%	104	0.37%	0	0.00%
MOPED-MOTOR SCOOTER	280	0.24%	200	0.72%	7	2.35%
TAXI	162	0.14%	44	0.16%	2	0.67%
CONSTRUCTION FARM EQUIPMENT	151	0.13%	27	0.10%	0	0.00%
HEAVY VEHICLE (UNCLASSIFIABLE)	146	0.12%	19	0.07%	1	0.34%
CAR-TRAILER COMBO.	107	0.09%	13	0.05%	0	0.00%
OFF ROAD VEHICLE	63	0.05%	26	0.09%	2	0.67%
TRUCK TRACTOR ONLY	61	0.05%	10	0.04%	0	0.00%
TRACTOR DOUBLE TRAILER	42	0.04%	7	0.03%	0	0.00%
MOTOR HOME/CAMPER	35	0.03%	2	0.01%	0	0.00%
TRACTOR TRIPLE TRAILER	6	0.01%	0	0.00%	0	0.00%
TRAIN	1	0.00%	0	0.00%	0	0.00%
TOTAL	118935		27969		298	

16% of vehicles involved in fatal crashes were motorcycles.



ALL REPORTED CRASHES

2014 CRASHES BY DRIVER AGE

	AGE OF ALL DRIVERS					
	CRASHES		INJURY		FATAL	
	CRASHES	%	CRASHES	%	CRASHES	%
UNDER 16	206	0.13%	142	0.35%	2	0.59%
16-19	10986	6.74%	2596	6.33%	16	4.72%
20-24	21899	13.44%	5590	13.64%	50	14.75%
25-29	19349	11.88%	5065	12.36%	42	12.39%
30-34	16272	9.99%	4211	10.27%	32	9.44%
35-39	13875	8.52%	3456	8.43%	26	7.67%
40-44	14201	8.72%	3496	8.53%	22	6.49%
45-49	14834	9.11%	3703	9.03%	29	8.55%
50-54	14199	8.72%	3493	8.52%	27	7.96%
55-59	12082	7.42%	3016	7.36%	26	7.67%
60-64	8900	5.46%	2208	5.39%	22	6.49%
65-69	6146	3.77%	1493	3.64%	10	2.95%
70-74	4004	2.46%	979	2.39%	8	2.36%
75-79	2582	1.58%	629	1.53%	11	3.24%
80 AND OVER	3379	2.07%	911	2.22%	16	4.72%
TOTAL	162914		40988		339	

16-29 YEAR OLD DRIVERS

	CRASHES		INJURY		FATAL	
	CRASHES	%	CRASHES	%	CRASHES	%
16	1063	0.65%	256	0.62%	1	0.29%
17	2822	1.73%	668	1.63%	3	0.88%
18	3428	2.10%	823	2.01%	5	1.47%
19	3673	2.25%	902	2.20%	7	2.06%
20	4015	2.46%	1015	2.48%	4	1.18%
21	4222	2.59%	1084	2.64%	9	2.65%
22	4445	2.73%	1137	2.77%	12	3.54%
23	4590	2.82%	1176	2.87%	14	4.13%
24	4627	2.84%	1178	2.87%	11	3.24%
25	4276	2.62%	1111	2.71%	6	1.77%
26	4126	2.53%	1094	2.67%	10	2.95%
27	3794	2.33%	994	2.43%	9	2.65%
28	3638	2.23%	937	2.29%	7	2.06%
29	3515	2.16%	929	2.27%	10	2.95%
TOTAL	52234		13304		108	

ALL REPORTED CRASHES

AGE OF DRIVERS RESPONSIBLE FOR CRASHES

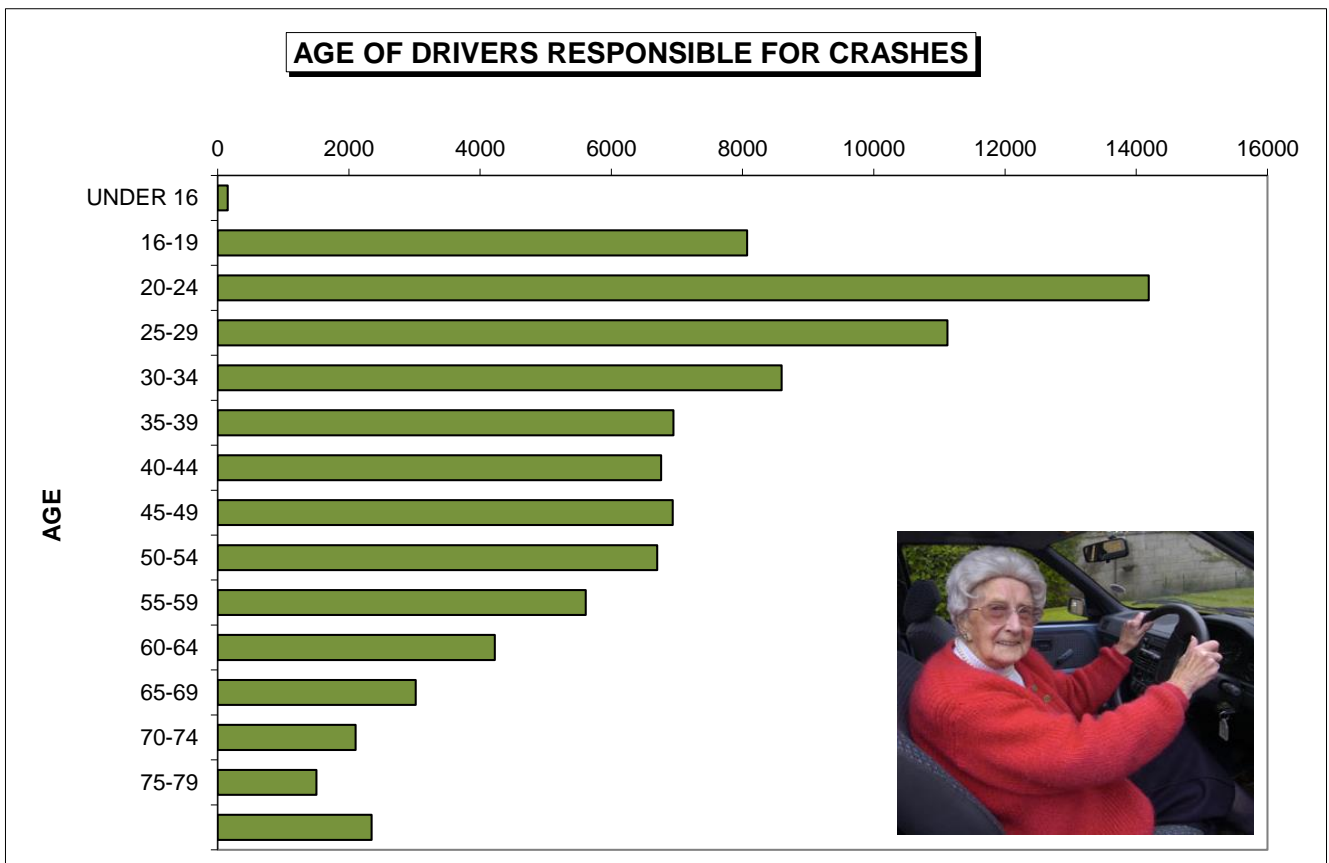
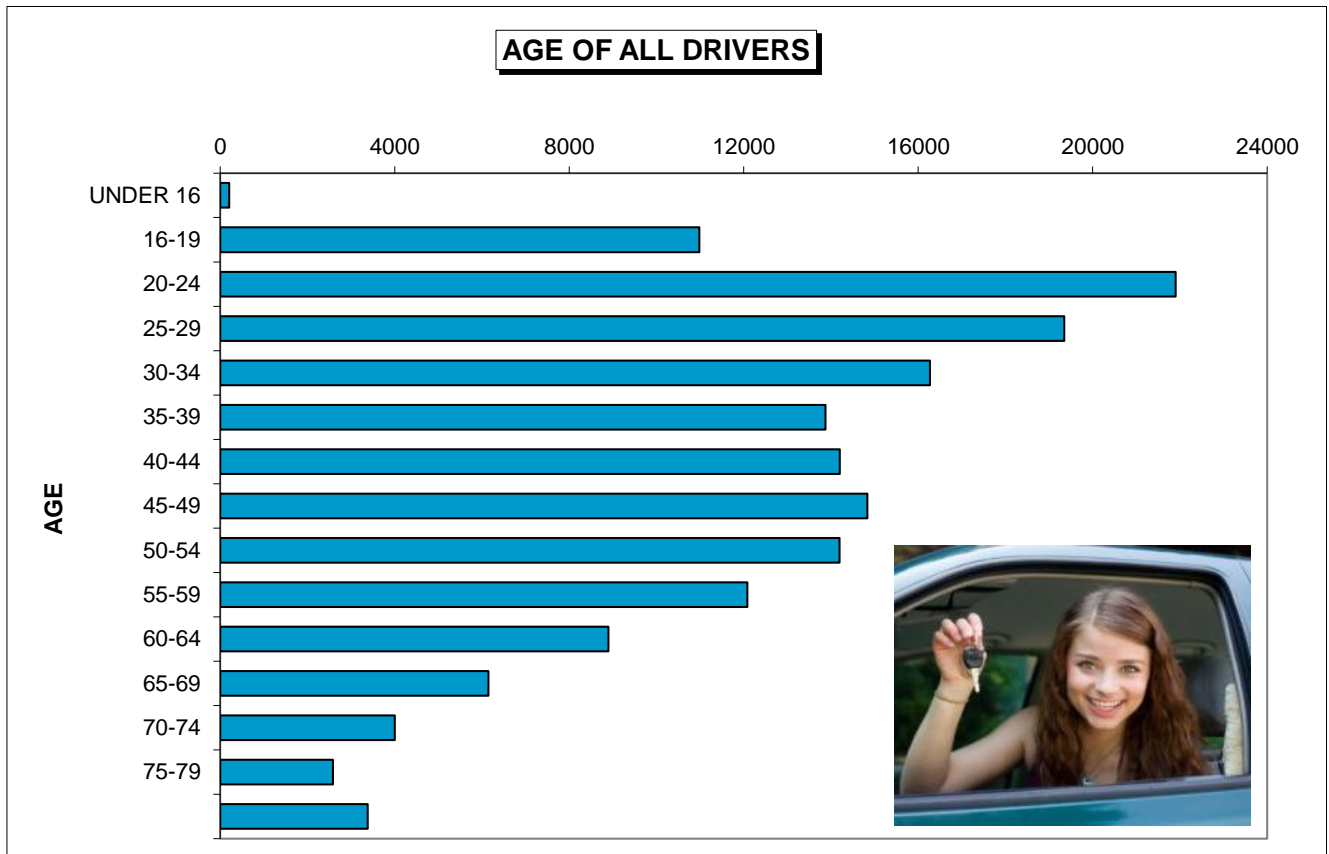
	CRASHES		INJURY		FATAL	
	CRASHES	%	CRASHES	%	CRASHES	%
UNDER 16	153	0.16%	37	0.16%	2	0.85%
16-19	8068	8.37%	1882	8.26%	13	5.56%
20-24	14191	14.73%	3374	14.82%	45	19.23%
25-29	11122	11.54%	2651	11.64%	25	10.68%
30-34	8597	8.92%	2013	8.84%	24	10.26%
35-39	6948	7.21%	1598	7.02%	21	8.97%
40-44	6760	7.01%	1613	7.08%	13	5.56%
45-49	6935	7.20%	1646	7.23%	17	7.26%
50-54	6699	6.95%	1583	6.95%	15	6.41%
55-59	5608	5.82%	1371	6.02%	11	4.70%
60-64	4224	4.38%	991	4.35%	14	5.98%
65-69	3020	3.13%	746	3.28%	6	2.56%
70-74	2101	2.18%	499	2.19%	4	1.71%
75-79	1505	1.56%	342	1.50%	7	2.99%
80 AND OVER	2346	2.43%	561	2.46%	14	5.98%
UNKNOWN	8091	8.40%	1866	8.19%	3	1.28%
TOTAL	96368		22773		234	

15% of drivers responsible for crashes and 19% of drivers responsible for fatal crashes were aged 20-24.

16-29 YEAR OLD DRIVERS RESPONSIBLE FOR CRASHES

	CRASHES		INJURY		FATAL	
	CRASHES	%	CRASHES	%	CRASHES	%
16	822	0.85%	173	0.76%	0	0.00%
17	2119	2.20%	524	2.30%	2	0.85%
18	2524	2.62%	606	2.66%	5	2.14%
19	2609	2.71%	579	2.54%	6	2.56%
20	2727	2.83%	648	2.85%	4	1.71%
21	2803	2.91%	672	2.95%	8	3.42%
22	2922	3.03%	695	3.05%	12	5.13%
23	2901	3.01%	693	3.04%	12	5.13%
24	2838	2.94%	666	2.92%	9	3.85%
25	2535	2.63%	606	2.66%	3	1.28%
26	2389	2.48%	537	2.36%	5	2.14%
27	2175	2.26%	497	2.18%	6	2.56%
28	2072	2.15%	531	2.33%	5	2.14%
29	1951	2.02%	480	2.11%	6	2.56%
TOTAL	33387		7907		83	

ALL REPORTED CRASHES



ALL REPORTED CRASHES

2014 CRASHES BY DRIVER SEX

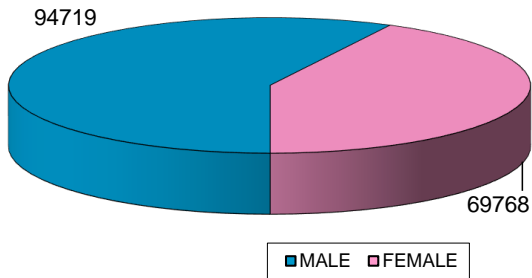
	SEX OF ALL DRIVERS					
	CRASHES		INJURY		FATAL	
	CRASHES	%	CRASHES	%	CRASHES	%
MALE	94719	55.23%	23187	54.77%	272	79.07%
FEMALE	69768	40.68%	18158	42.89%	68	19.77%
DRIVERLESS VEHICLE	54	0.03%	10	0.02%	0	0.00%
UNKNOWN	6943	4.05%	984	2.32%	4	1.16%
TOTAL	171484		42339		344	

SEX OF DRIVERS RESPONSIBLE FOR CRASHES

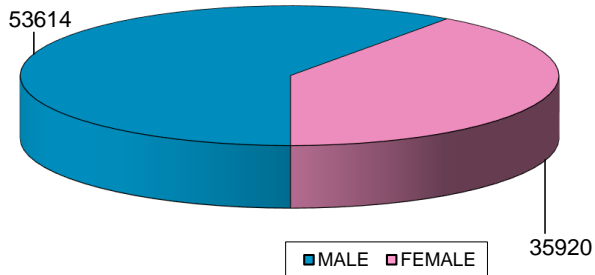
	SEX OF DRIVERS RESPONSIBLE FOR CRASHES					
	CRASHES		INJURY		FATAL	
	CRASHES	%	CRASHES	%	CRASHES	%
MALE	53614	55.95%	12693	56.21%	192	82.05%
FEMALE	35920	37.49%	8522	37.74%	39	16.67%
DRIVERLESS VEHICLE	31	0.03%	8	0.04%	0	0.00%
UNKNOWN	6258	6.53%	1360	6.02%	3	1.28%
TOTAL	95823		22583		234	

56% of drivers responsible for crashes and 82% of drivers responsible for fatal crashes were Male.

SEX OF ALL DRIVERS



SEX OF DRIVERS RESPONSIBLE FOR CRASHES



ALL REPORTED CRASHES

2014 CRASHES BY SEAT BELT USAGE

**INJURY SEVERITY BY SEAT BELT USAGE FOR FRONT SEAT OCCUPANTS
OF PRIVATE PASSENGER MOTOR VEHICLES NOT EQUIPPED WITH AIRBAGS**
(automobiles, single unit-single tire trucks, passenger vans, motorhome/campers and car-trailer combos)

	BELT NOT USED	%	BELT USED	%	TOTAL (excluding unknown)	%
KILLED	6	2.19%	2	0.01%	8	0.04%
"A" INJURY	13	4.74%	27	0.15%	40	0.22%
"B" INJURY	40	14.60%	377	2.12%	417	2.31%
"C" INJURY	28	10.22%	1466	8.23%	1494	8.26%
NO INJURY	187	68.25%	15936	89.49%	16123	89.17%
TOTAL	274		17808		18082	

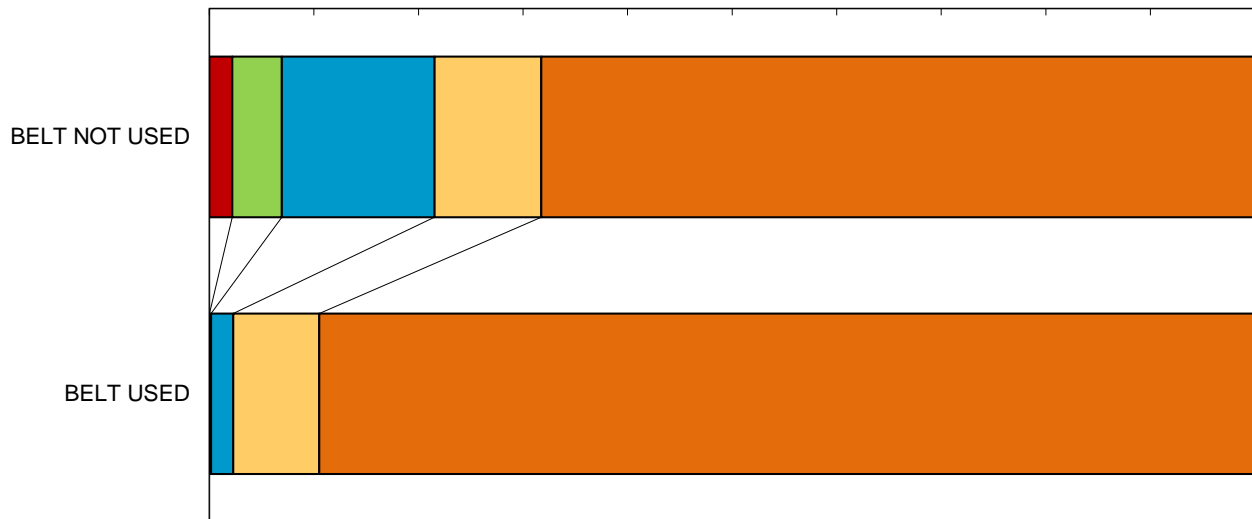
	UNKNOWN	%	TOTAL (including unknown)	%
KILLED	5	0.12%	13	0.06%
"A" INJURY	9	0.21%	49	0.22%
"B" INJURY	67	1.58%	484	2.17%
"C" INJURY	360	8.50%	1854	8.31%
NO INJURY	3796	89.59%	19919	89.25%
TOTAL	4237		22319	



INJURY SEVERITY BY SEAT BELT USAGE

PERCENTAGE

0.00% 10.00% 20.00% 30.00% 40.00% 50.00% 60.00% 70.00% 80.00% 90.00% 100.00%



■ KILLED ■ "A" INJURY ■ "B" INJURY ■ "C" INJURY ■ NO INJURY

ALL REPORTED CRASHES

2014 CRASHES BY HOLIDAYS

CRASH, INJURY AND FATALITY TOTALS

NEW YEAR

6 PM TUES 12/31/13 -
MIDNIGHT THURS 01/02/14
(30 HOURS)



PDO	141
INJURY	61
FATAL	0
TOTAL	202

INJURIES	86
FATALITIES	0

MEMORIAL DAY

6 PM FRI 05/23/14 -
MIDNIGHT TUES 05/27/14
(78 HOURS)



PDO	522
INJURY	201
FATAL	2
TOTAL	725

INJURIES	296
FATALITIES	2

4TH OF JULY

6 PM THURS 07/03/14 -
MIDNIGHT MON 07/07/14
(78 HOURS)



PDO	464
INJURY	209
FATAL	1
TOTAL	674

INJURIES	336
FATALITIES	1

LABOR DAY

6 PM FRI 08/29/14 -
MIDNIGHT TUES 09/02/14
(78 HOURS)



PDO	440
INJURY	156
FATAL	2
TOTAL	598

INJURIES	238
FATALITIES	2

THANKSGIVING

6 PM WED 11/26/14 -
MIDNIGHT MON 12/01/14
(102 HOURS)



PDO	518
INJURY	143
FATAL	0
TOTAL	661

INJURIES	200
FATALITIES	0

CHRISTMAS

6 PM WED 12/24/14 -
MIDNIGHT FRI 12/26/14
(30 HOURS)



PDO	121
INJURY	38
FATAL	0
TOTAL	159

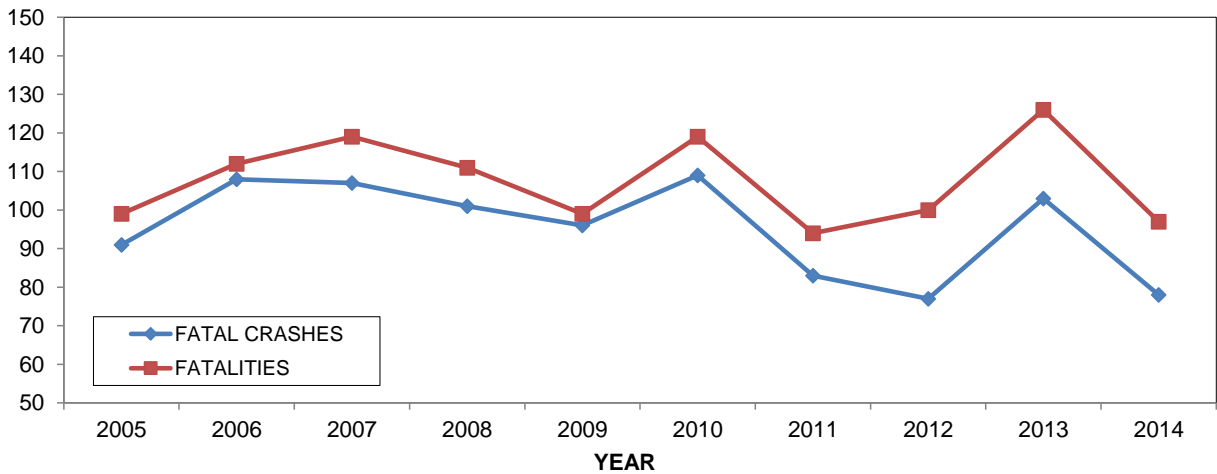
INJURIES	47
FATALITIES	0

REPORTED ALCOHOL INVOLVED CRASHES

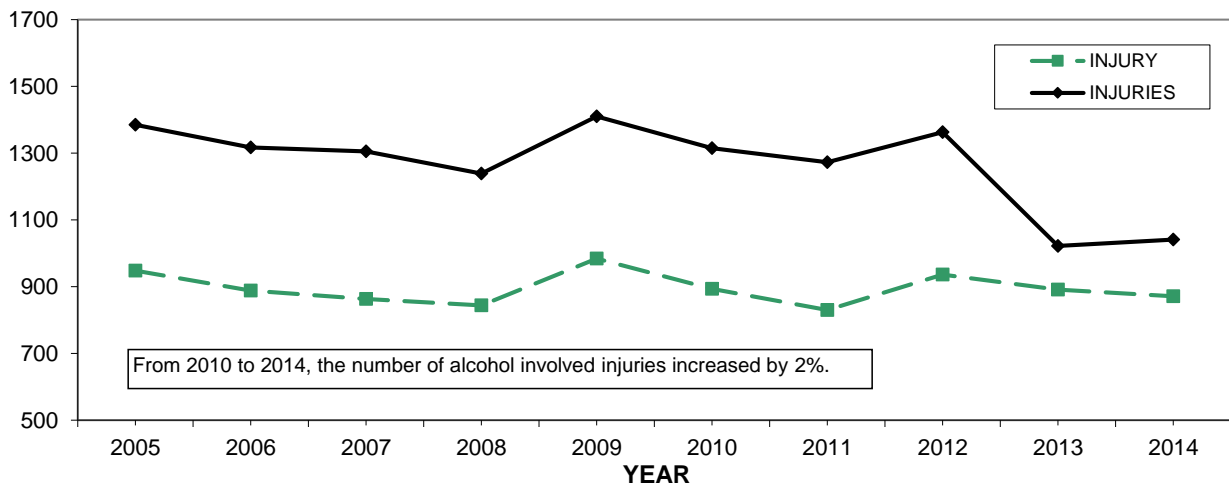
CRASHES, INJURIES AND FATALITIES (2005-2014)

	ALCOHOL INVOLVED CRASHES BY SEVERITY (2005-2014)				ALCOHOL INVOLVED INJURIES AND FATALITIES (2005-2014)	
	PDO*	INJURY	FATAL	TOTAL*	INJURIES	FATALITIES
2005	824	948	91	1863	1385	99
2006	780	888	108	1776	1317	112
2007	1475	863	107	2445	1305	119
2008	1421	844	101	2366	1239	111
2009	1696	984	96	2776	1410	99
2010	1611	893	109	2613	1315	119
2011	1022	830	83	1935	1273	94
2012	1611	936	77	2624	1363	100
2013	1613	891	103	2257	1022	126
2014	1592	871	78	2199	1041	97
TOTAL	13645	8948	953	22854	12670	1076

FATAL CRASHES AND FATALITIES



ALCOHOL INVOLVED INJURY CRASHES AND INJURIES

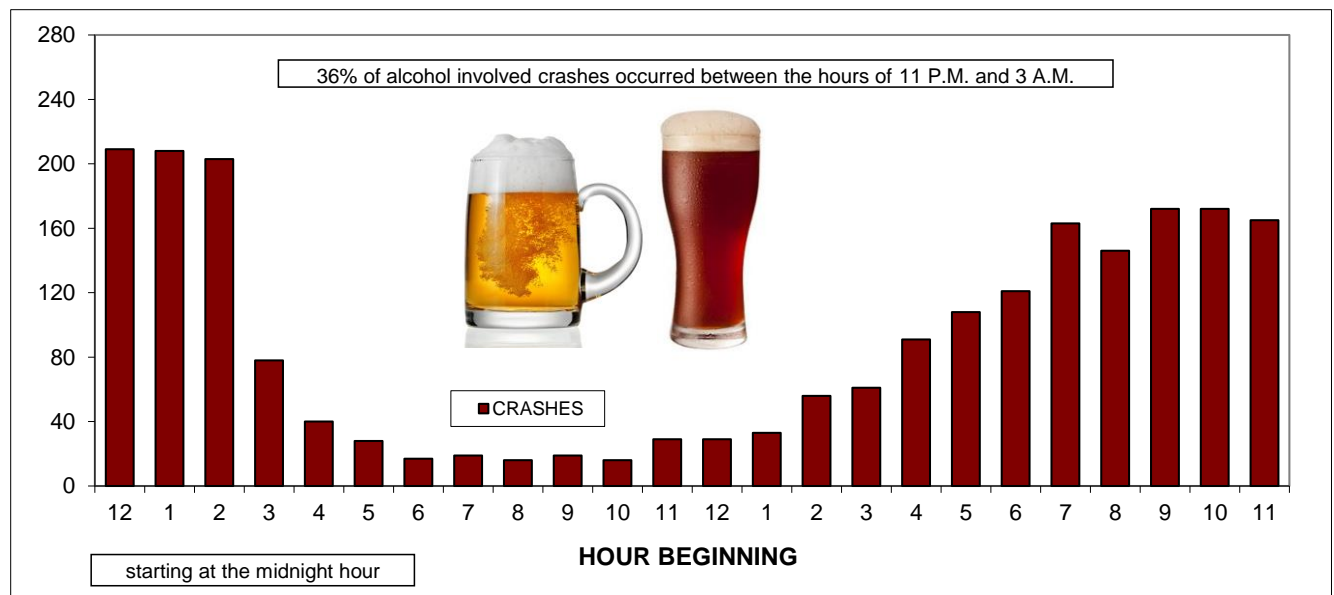


* see Data Limitations, page 2

REPORTED ALCOHOL INVOLVED CRASHES

2014 ALCOHOL INVOLVED CRASHES BY HOUR OF DAY

	CRASHES		INJURY		FATAL	
	CRASHES	%	CRASHES	%	CRASHES	%
MIDNIGHT - 12:59 AM	209	9.50%	62	8.77%	2	2.70%
1:00 AM - 1:59 AM	208	9.46%	48	6.79%	3	4.05%
2:00 AM - 2:59 AM	203	9.23%	70	9.90%	7	9.46%
3:00 AM - 3:59 AM	78	3.55%	21	2.97%	3	4.05%
4:00 AM - 4:59 AM	40	1.82%	14	1.98%	1	1.35%
5:00 AM - 5:59 AM	28	1.27%	8	1.13%	3	4.05%
6:00 AM - 6:59 AM	17	0.77%	3	0.42%	4	5.41%
7:00 AM - 7:59 AM	19	0.86%	4	0.57%	2	2.70%
8:00 AM - 8:59 AM	16	0.73%	3	0.42%	0	0.00%
9:00 AM - 9:59 AM	19	0.86%	9	1.27%	1	1.35%
10:00 AM - 10:59 AM	16	0.73%	8	1.13%	1	1.35%
11:00 AM - 11:59 AM	29	1.32%	9	1.27%	1	1.35%
NOON	29	1.32%	15	2.12%	1	1.35%
1:00 PM - 1:59 PM	33	1.50%	7	0.99%	1	1.35%
2:00 PM - 2:59 PM	56	2.55%	24	3.39%	5	6.76%
3:00 PM - 3:59 PM	61	2.77%	20	2.83%	1	1.35%
4:00 PM - 4:59 PM	91	4.14%	36	5.09%	3	4.05%
5:00 PM - 5:59 PM	108	4.91%	37	5.23%	3	4.05%
6:00 PM - 6:59 PM	121	5.50%	35	4.95%	8	10.81%
7:00 PM - 7:59 PM	163	7.41%	61	8.63%	6	8.11%
8:00 PM - 8:59 PM	146	6.64%	46	6.51%	6	8.11%
9:00 PM - 9:59 PM	172	7.82%	62	8.77%	3	4.05%
10:00 PM - 10:59 PM	172	7.82%	58	8.20%	4	5.41%
11:00 PM - 11:59 PM	165	7.50%	47	6.65%	5	6.76%
TOTAL	2199		707		74	

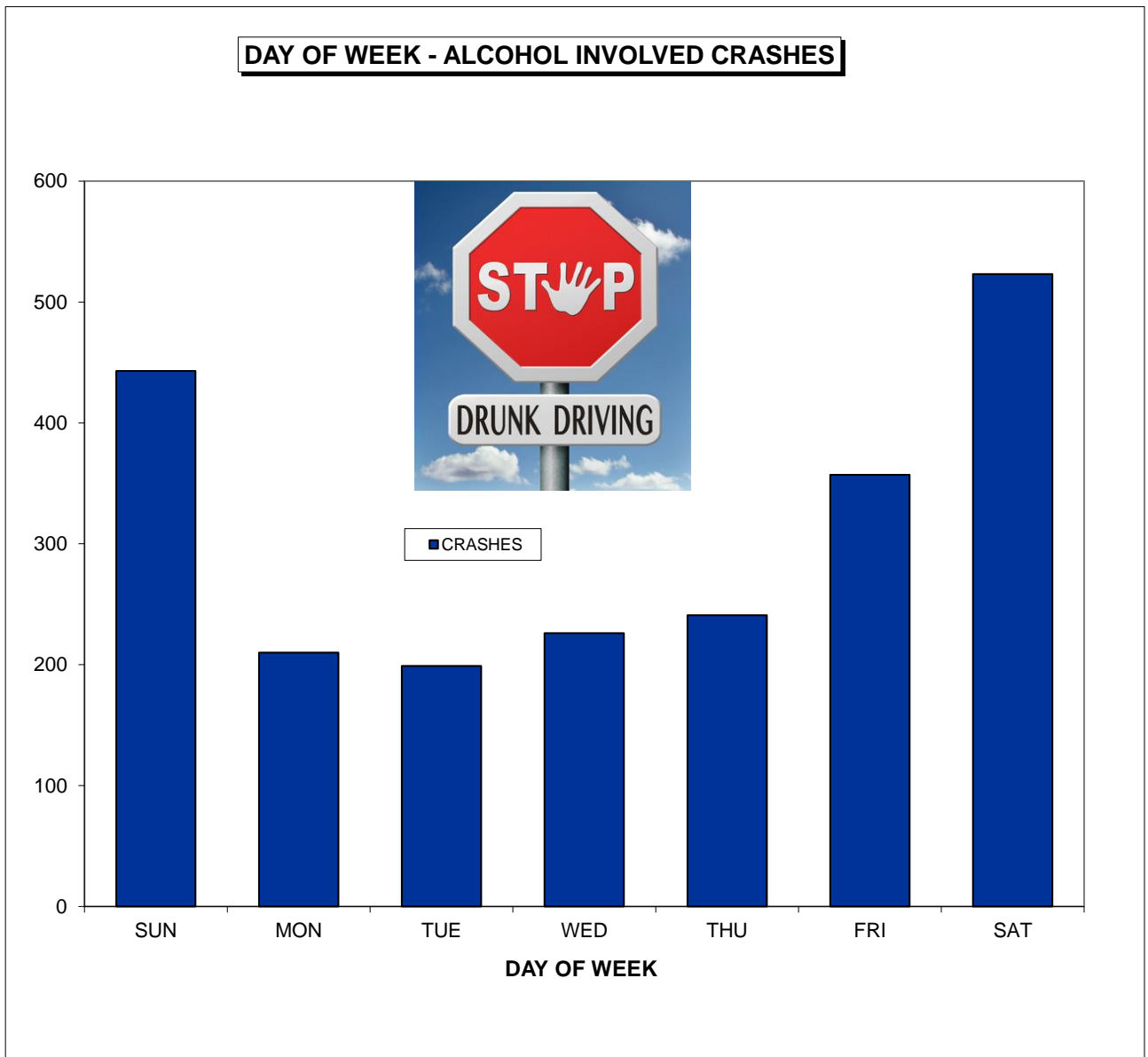


REPORTED ALCOHOL INVOLVED CRASHES

2014 ALCOHOL INVOLVED CRASHES BY DAY OF WEEK

	CRASHES		INJURY		FATAL	
	CRASHES	%	CRASHES	%	CRASHES	%
SUNDAY	443	20.15%	132	18.67%	20	27.03%
MONDAY	210	9.55%	67	9.48%	6	8.11%
TUESDAY	199	9.05%	65	9.19%	9	12.16%
WEDNESDAY	226	10.28%	74	10.47%	4	5.41%
THURSDAY	241	10.96%	85	12.02%	9	12.16%
FRIDAY	357	16.23%	101	14.29%	10	13.51%
SATURDAY	523	23.78%	183	25.88%	16	21.62%
TOTAL	2199		707		74	

27% of alcohol involved fatal crashes occurred on Sunday.



REPORTED ALCOHOL INVOLVED CRASHES

2014 ALCOHOL INVOLVED CRASHES BY DRIVER AGE

AGE OF ALL DRIVERS IN ALCOHOL INVOLVED CRASHES

	CRASHES		INJURY		FATAL	
	CRASHES	%	CRASHES	%	CRASHES	%
UNDER 16	0	0.00%	0	0.00%	0	0.00%
16-19	75	3.51%	30	4.41%	3	5.00%
20-24	380	17.79%	119	17.50%	13	21.67%
25-29	352	16.48%	107	15.74%	9	15.00%
30-34	287	13.44%	87	12.79%	8	13.33%
35-39	199	9.32%	60	8.82%	8	13.33%
40-44	174	8.15%	61	8.97%	3	5.00%
45-49	182	8.52%	66	9.71%	1	1.67%
50-54	219	10.25%	68	10.00%	7	11.67%
55-59	107	5.01%	42	6.18%	2	3.33%
60-64	80	3.75%	21	3.09%	4	6.67%
65-69	37	1.73%	10	1.47%	0	0.00%
70-74	12	0.56%	2	0.29%	1	1.67%
75-79	9	0.42%	4	0.59%	1	1.67%
OVER 79	7	0.33%	3	0.44%	0	0.00%
UNKNOWN	16	0.75%	0	0.00%	0	0.00%
TOTAL	2136		680		60	

16-29 YEAR OLD DRIVERS IN ALCOHOL INVOLVED CRASHES

	CRASHES		INJURY		FATAL	
	CRASHES	%	CRASHES	%	CRASHES	%
16	3	0.14%	2	0.29%	0	0.00%
17	5	0.23%	3	0.44%	0	0.00%
18	20	0.94%	9	1.32%	1	1.67%
19	47	2.20%	16	2.35%	2	3.33%
20	46	2.15%	14	2.06%	2	3.33%
21	83	3.89%	31	4.56%	2	3.33%
22	73	3.42%	19	2.79%	6	10.00%
23	84	3.93%	23	3.38%	2	3.33%
24	94	4.40%	32	4.71%	1	1.67%
25	79	3.70%	25	3.68%	1	1.67%
26	75	3.51%	26	3.82%	2	3.33%
27	71	3.32%	17	2.50%	2	3.33%
28	77	3.60%	21	3.09%	1	1.67%
29	50	2.34%	18	2.65%	3	5.00%
TOTAL	807		256		25	

REPORTED ALCOHOL INVOLVED CRASHES

AGE OF DRIVERS RESPONSIBLE FOR CRASHES WHO HAD CONSUMED ALCOHOL

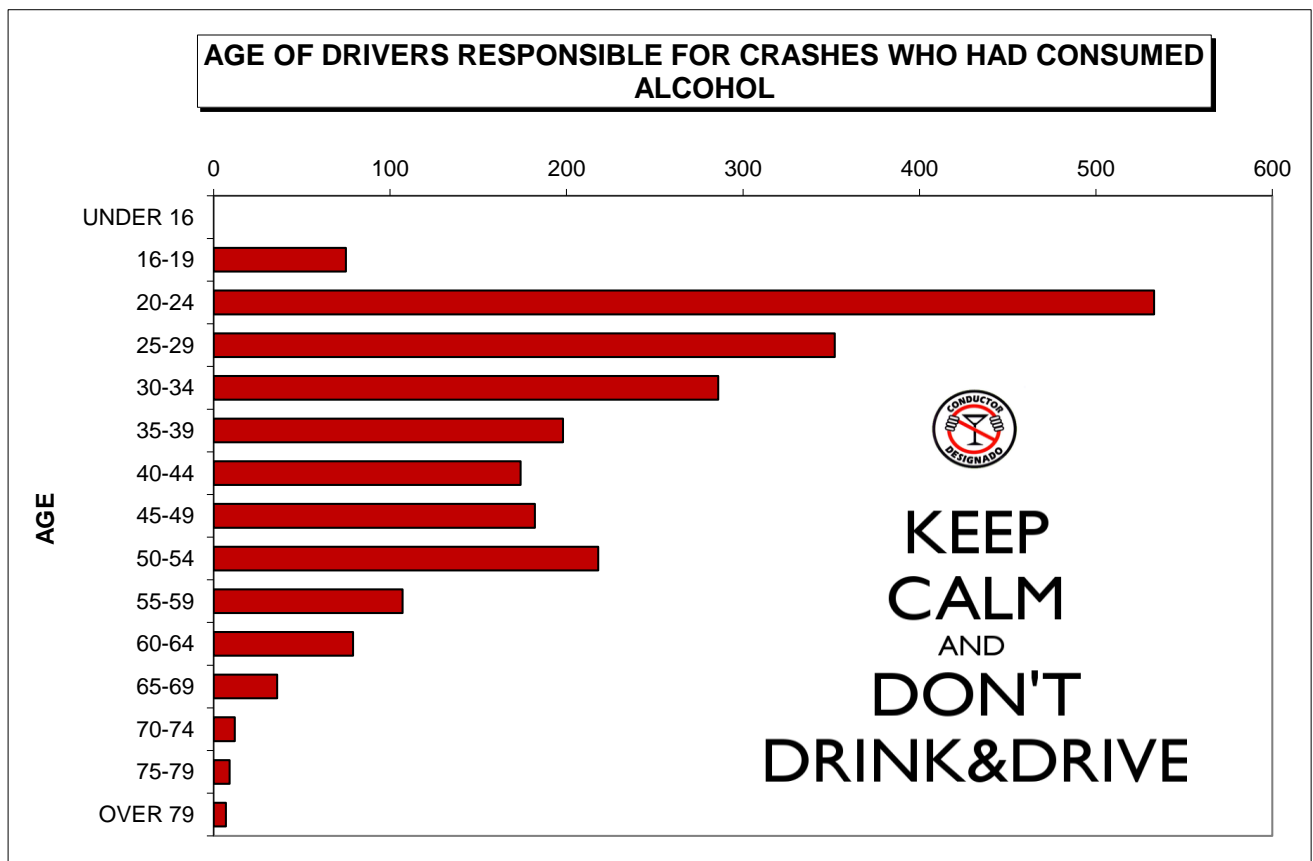
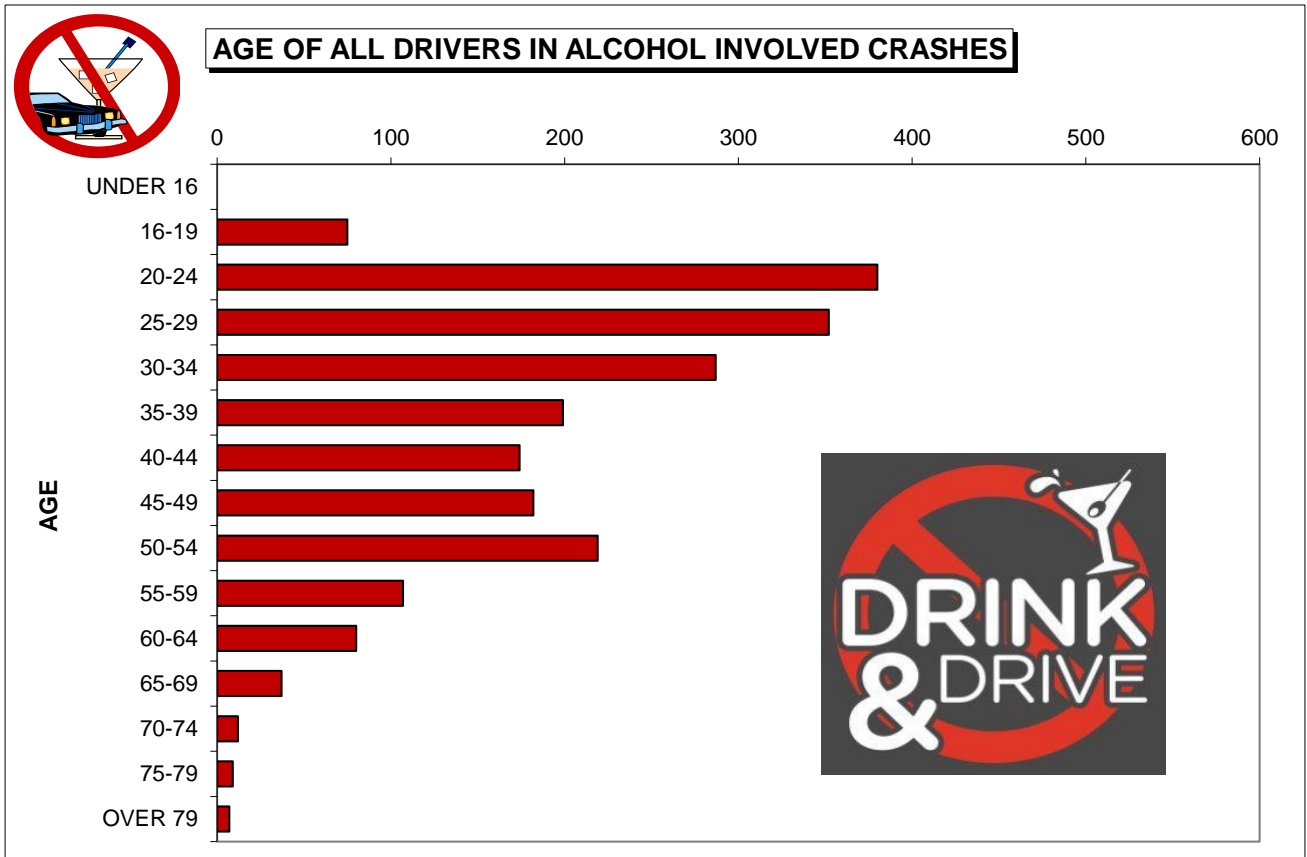
	CRASHES		INJURY		FATAL	
	CRASHES	%	CRASHES	%	CRASHES	%
UNDER 16	0	0.00%	0	0.00%	0	0.00%
16-19	75	3.28%	30	4.41%	3	5.08%
20-24	533	23.34%	119	17.47%	13	22.03%
25-29	352	15.41%	107	15.71%	9	15.25%
30-34	286	12.52%	86	12.63%	8	13.56%
35-39	198	8.67%	59	8.66%	8	13.56%
40-44	174	7.62%	61	8.96%	3	5.08%
45-49	182	7.97%	66	9.69%	1	1.69%
50-54	218	9.54%	68	9.99%	6	10.17%
55-59	107	4.68%	42	6.17%	2	3.39%
60-64	79	3.46%	21	3.08%	4	6.78%
65-69	36	1.58%	9	1.32%	0	0.00%
70-74	12	0.53%	2	0.29%	1	1.69%
75-79	9	0.39%	4	0.59%	1	1.69%
OVER 79	7	0.31%	3	0.44%	0	0.00%
UNKNOWN	16	0.70%	4	0.59%	0	0.00%
TOTAL	2284		681		59	

22% of drivers responsible for crashes who had consumed alcohol were aged 20-24 .

16-29 YEAR OLD DRIVERS RESPONSIBLE FOR CRASHES WHO HAD CONSUMED ALCOHOL

	CRASHES		INJURY		FATAL	
	CRASHES	%	CRASHES	%	CRASHES	%
16	3	0.13%	2	0.29%	0	0.00%
17	5	0.22%	3	0.44%	0	0.00%
18	20	0.88%	9	1.32%	1	1.69%
19	47	2.06%	16	2.35%	2	3.39%
20	200	8.76%	14	2.06%	2	3.39%
21	82	3.59%	31	4.55%	2	3.39%
22	73	3.20%	19	2.79%	6	10.17%
23	84	3.68%	23	3.38%	2	3.39%
24	94	4.12%	32	4.70%	1	1.69%
25	79	3.46%	25	3.67%	1	1.69%
26	75	3.28%	26	3.82%	2	3.39%
27	71	3.11%	17	2.50%	2	3.39%
28	77	3.37%	21	3.08%	1	1.69%
29	50	2.19%	18	2.64%	3	5.08%
TOTAL	960		256		25	

REPORTED ALCOHOL INVOLVED CRASHES



REPORTED ALCOHOL INVOLVED CRASHES

2014 ALCOHOL INVOLVED CRASHES BY DRIVER SEX

SEX OF ALL DRIVERS IN ALCOHOL INVOLVED CRASHES

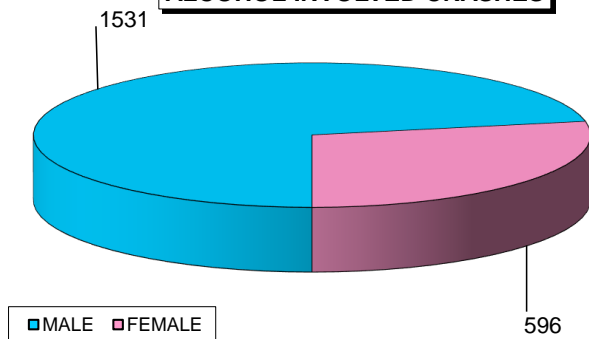
	CRASHES		INJURY		FATAL	
	CRASHES	%	CRASHES	%	CRASHES	%
MALE	1531	71.68%	489	71.49%	53	88.33%
FEMALE	596	27.90%	193	28.22%	6	10.00%
UNKNOWN	9	0.42%	2	0.29%	1	1.67%
TOTAL	2136		684		60	

SEX OF DRIVERS RESPONSIBLE FOR ALCOHOL INVOLVED CRASHES

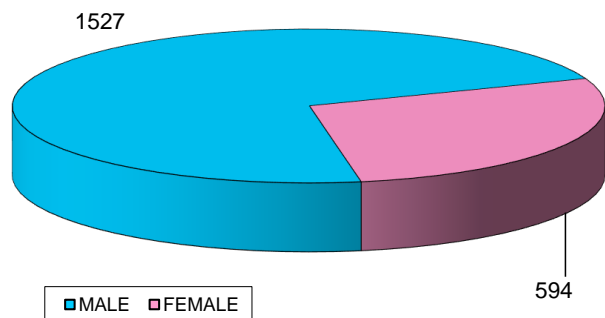
	CRASHES		INJURY		FATAL	
	CRASHES	%	CRASHES	%	CRASHES	%
MALE	1527	71.69%	487	69.87%	52	88.14%
FEMALE	594	27.89%	208	29.84%	6	10.17%
UNKNOWN	9	0.42%	2	0.29%	1	1.69%
TOTAL	2130		697		59	

72% of drivers responsible for crashes who had consumed alcohol were Male.

SEX OF ALL DRIVERS IN ALCOHOL INVOLVED CRASHES



SEX OF DRIVERS RESPONSIBLE FOR CRASHES WHO HAD CONSUMED ALCOHOL



REPORTED ALCOHOL INVOLVED CRASHES

HOLIDAYS

2014 ALCOHOL INVOLVED CRASH, INJURY AND FATALITY TOTALS

NEW YEAR

6 PM TUES 12/31/13 -
MIDNIGHT THURS 01/02/14
(30 HOURS)



PDO	5
INJURY	3
FATAL	0
TOTAL	8

INJURIES	4
FATALITIES	0

MEMORIAL DAY

6 PM FRI 05/23/14 -
MIDNIGHT TUES 05/27/14
(78 HOURS)



PDO	21
INJURY	17
FATAL	0
TOTAL	38

INJURIES	18
FATALITIES	0

4TH OF JULY

6 PM THURS 07/03/14 -
MIDNIGHT MON 07/07/14
(78 HOURS)



PDO	23
INJURY	17
FATAL	1
TOTAL	41

INJURIES	17
FATALITIES	1

LABOR DAY

6 PM FRI 08/29/14 -
MIDNIGHT TUES 09/02/14
(78 HOURS)



PDO	12
INJURY	7
FATAL	0
TOTAL	19

INJURIES	8
FATALITIES	0

THANKSGIVING

6 PM WED 11/26/14 -
MIDNIGHT MON 12/01/14
(102 HOURS)



PDO	18
INJURY	9
FATAL	0
TOTAL	27

INJURIES	11
FATALITIES	0

CHRISTMAS

6 PM WED 12/24/14 -
MIDNIGHT FRI 12/26/14
(30 HOURS)



PDO	6
INJURY	5
FATAL	0
TOTAL	11

INJURIES	8
FATALITIES	0

REPORTED TRACTOR-TRAILER INVOLVED CRASHES

CRASHES, INJURIES AND FATALITIES (2005-2014)

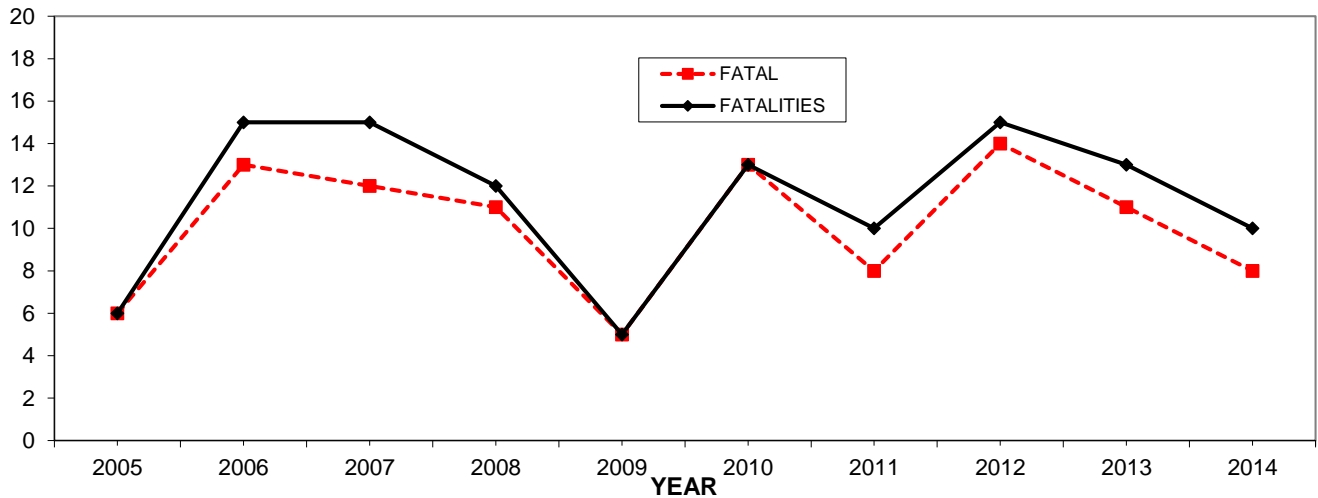
**TRACTOR-TRAILER INVOLVED
CRASHES BY SEVERITY
(2005-2014)**

	PDO*	INJURY	FATAL	TOTAL*
2005	2052	539	6	2597
2006	1604	417	13	2034
2007	2341	452	12	2805
2008	2062	464	11	2537
2009	2067	444	5	2516
2010	1914	433	13	2360
2011	1765	383	8	2156
2012	1692	337	14	2043
2013	1923	381	11	2315
2014	1940	368	8	2316
TOTAL	19360	4218	101	23679

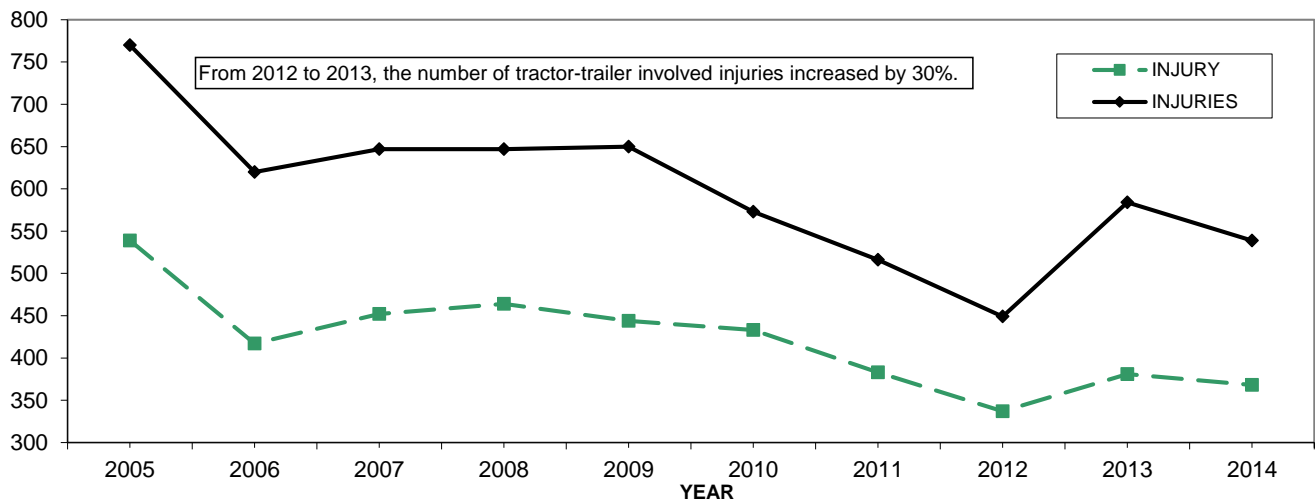
**TRACTOR-TRAILER INVOLVED
INJURIES AND FATALITIES
(2005-2014)**

	INJURIES	FATALITIES
2005	770	6
2006	620	15
2007	647	15
2008	647	12
2009	650	5
2010	573	13
2011	516	10
2012	449	15
2013	584	13
2014	539	10
TOTAL	5995	114

TRACTOR-TRAILER INVOLVED FATAL CRASHES AND FATALITIES



TRACTOR-TRAILER INVOLVED INJURY CRASHES AND INJURIES

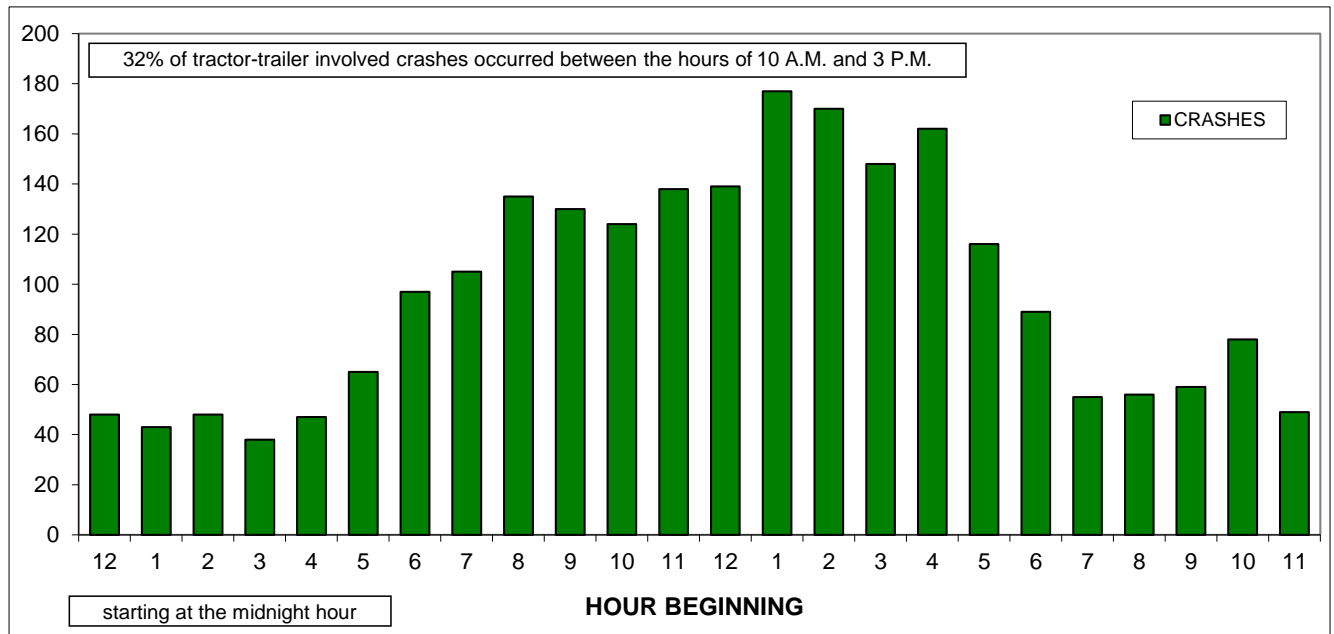


* see Data Limitations, page 2

REPORTED TRACTOR-TRAILER INVOLVED CRASHES

2014 TRACTOR-TRAILER INVOLVED CRASHES BY HOUR OF DAY

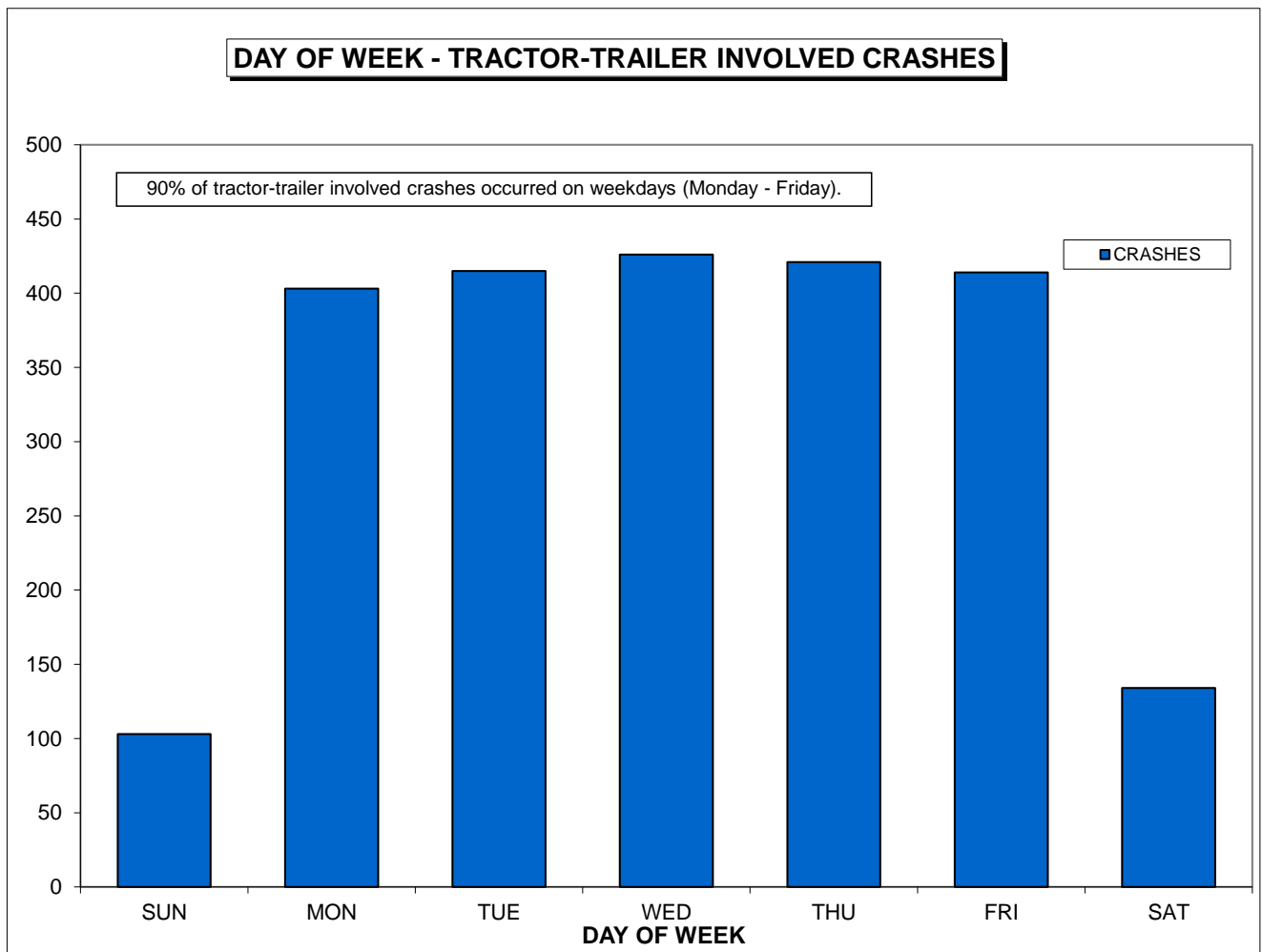
	CRASHES		INJURY		FATAL	
	CRASHES	%	CRASHES	%	CRASHES	%
MIDNIGHT - 12:59 AM	48	2.07%	8	2.17%	1	12.50%
1:00 AM - 1:59 AM	43	1.86%	6	1.63%	0	0.00%
2:00 AM - 2:59 AM	48	2.07%	12	3.26%	0	0.00%
3:00 AM - 3:59 AM	38	1.64%	9	2.45%	0	0.00%
4:00 AM - 4:59 AM	47	2.03%	10	2.72%	1	12.50%
5:00 AM - 5:59 AM	65	2.81%	14	3.80%	1	12.50%
6:00 AM - 6:59 AM	97	4.19%	22	5.98%	1	12.50%
7:00 AM - 7:59 AM	105	4.53%	17	4.62%	0	0.00%
8:00 AM - 8:59 AM	135	5.83%	20	5.43%	0	0.00%
9:00 AM - 9:59 AM	130	5.61%	20	5.43%	0	0.00%
10:00 AM - 10:59 AM	124	5.35%	17	4.62%	0	0.00%
11:00 AM - 11:59 AM	138	5.96%	23	6.25%	0	0.00%
NOON	139	6.00%	20	5.43%	0	0.00%
1:00 PM - 1:59 PM	177	7.64%	23	6.25%	0	0.00%
2:00 PM - 2:59 PM	170	7.34%	27	7.34%	0	0.00%
3:00 PM - 3:59 PM	148	6.39%	28	7.61%	0	0.00%
4:00 PM - 4:59 PM	162	6.99%	27	7.34%	0	0.00%
5:00 PM - 5:59 PM	116	5.01%	15	4.08%	0	0.00%
6:00 PM - 6:59 PM	89	3.84%	7	1.90%	1	12.50%
7:00 PM - 7:59 PM	55	2.37%	7	1.90%	1	12.50%
8:00 PM - 8:59 PM	56	2.42%	6	1.63%	1	12.50%
9:00 PM - 9:59 PM	59	2.55%	7	1.90%	1	12.50%
10:00 PM - 10:59 PM	78	3.37%	13	3.53%	0	0.00%
11:00 PM - 11:59 PM	49	2.12%	10	2.72%	0	0.00%
TOTAL	2316		368		8	



REPORTED TRACTOR-TRAILER INVOLVED CRASHES

2014 TRACTOR-TRAILER INVOLVED CRASHES BY DAY WEEK

	CRASHES		INJURY		FATAL	
	CRASHES	%	CRASHES	%	CRASHES	%
SUNDAY	103	4.45%	22	5.98%	3	37.50%
MONDAY	403	17.40%	60	16.30%	0	0.00%
TUESDAY	415	17.92%	70	19.02%	1	12.50%
WEDNESDAY	426	18.39%	66	17.93%	2	25.00%
THURSDAY	421	18.18%	67	18.21%	0	0.00%
FRIDAY	414	17.88%	62	16.85%	1	12.50%
SATURDAY	134	5.79%	21	5.71%	1	12.50%
TOTAL	2316		368		8	

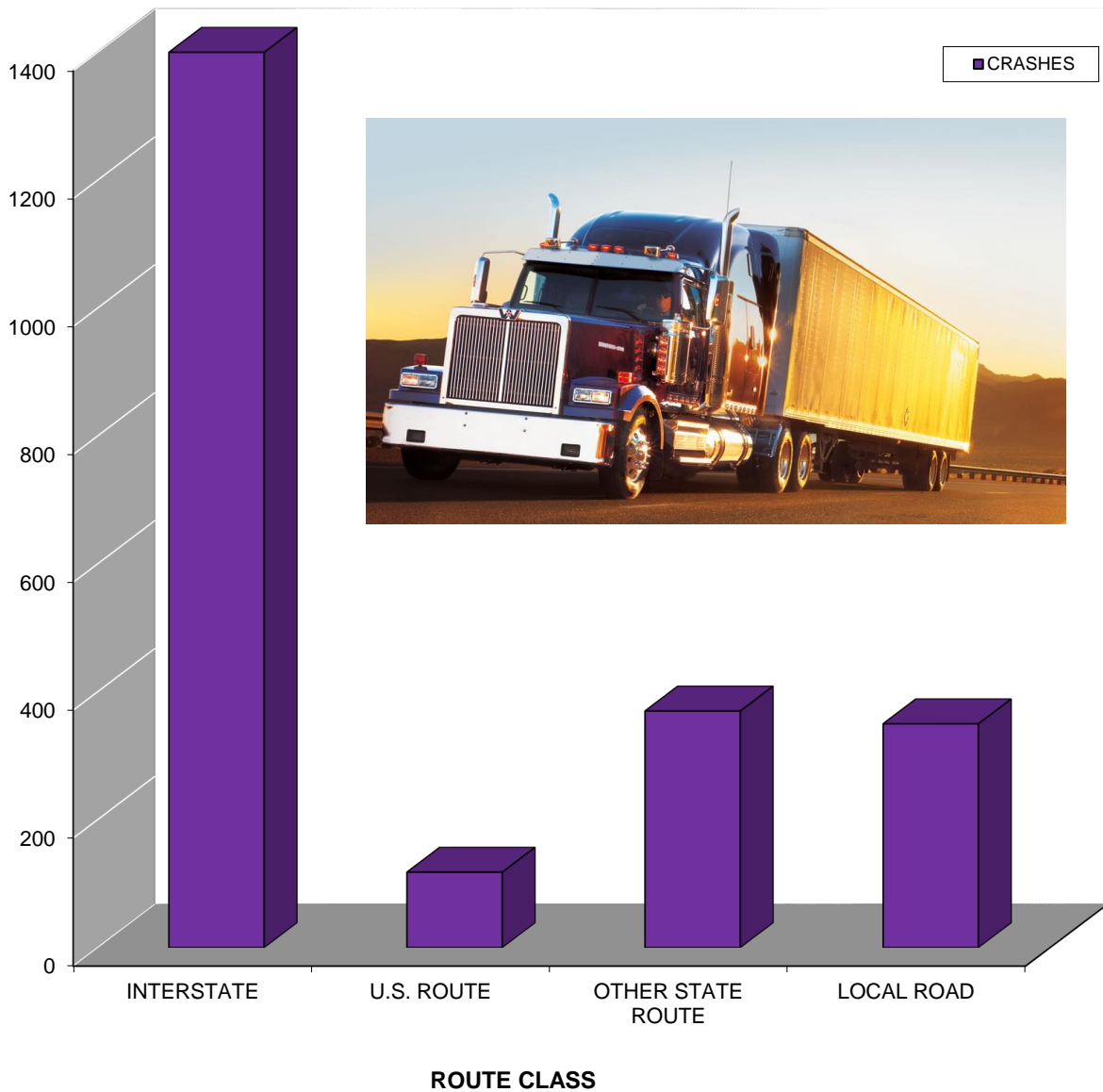


REPORTED TRACTOR-TRAILER INVOLVED CRASHES

2014 TRACTOR-TRAILER INVOLVED CRASHES BY ROUTE CLASS

	CRASHES		INJURY		FATAL	
	CRASHES	%	CRASHES	%	CRASHES	%
INTERSTATE	1478	63.82%	264	71.74%	7	87.50%
U.S. ROUTE	118	5.09%	16	4.35%	0	0.00%
OTHER STATE ROUTE	370	15.98%	58	15.76%	1	12.50%
LOCAL ROAD	350	15.11%	30	8.15%	0	0.00%
TOTAL	2316		368		8	

ROUTE CLASS - TRACTOR-TRAILER INVOLVED CRASHES



REPORTED TRACTOR-TRAILER INVOLVED CRASHES

2014 TRACTOR-TRAILER INVOLVED INTERSTATE CRASHES BY SEVERITY

	PDO	INJURY	FATAL	TOTALS
I-84	393	69	2	464
I-91	223	47	0	270
I-95	554	135	5	694
I-291	5	0	0	5
I-384	0	0	0	0
I-395	27	7	0	34
I-684	0	0	0	0
I-691	6	5	0	11
TOTAL	1208	263	7	1478



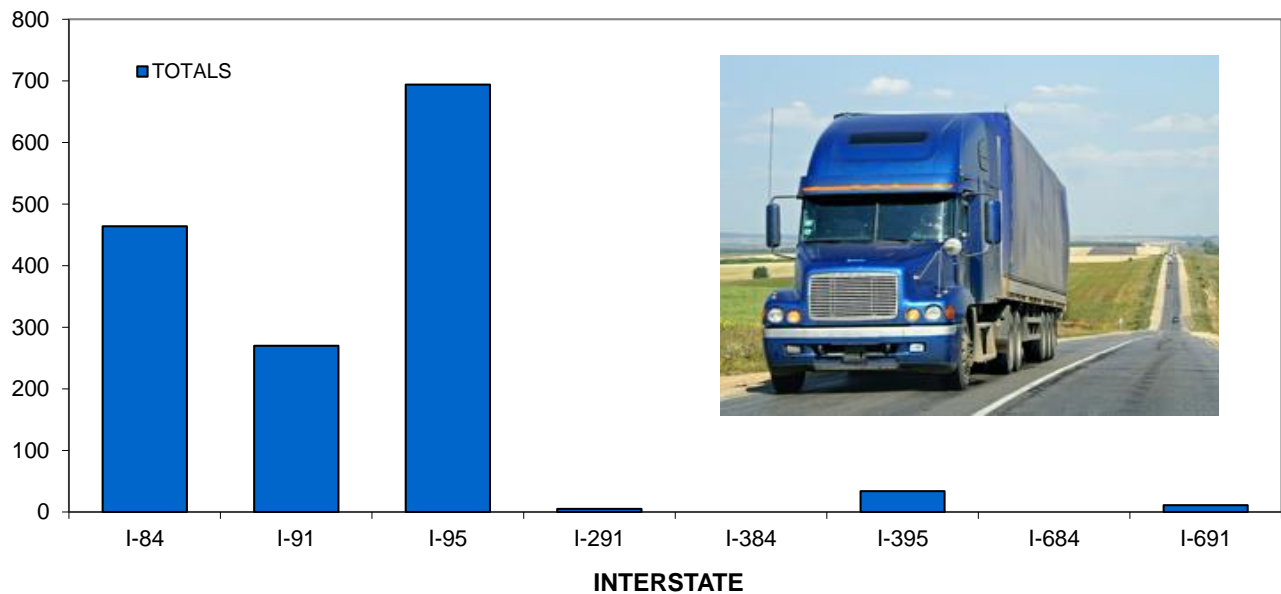
47% of tractor-trailer involved interstate crashes occurred on I-95.

2014 TRACTOR-TRAILER INVOLVED INTERSTATE INJURIES AND FATALITIES

	INJURIES	FATALITIES
I-84	114	2
I-91	64	0
I-95	202	7
I-291	0	0
I-384	0	0
I-395	17	0
I-684	0	0
I-691	6	0
TOTAL	403	9



TRACTOR-TRAILER INVOLVED INTERSTATE CRASHES

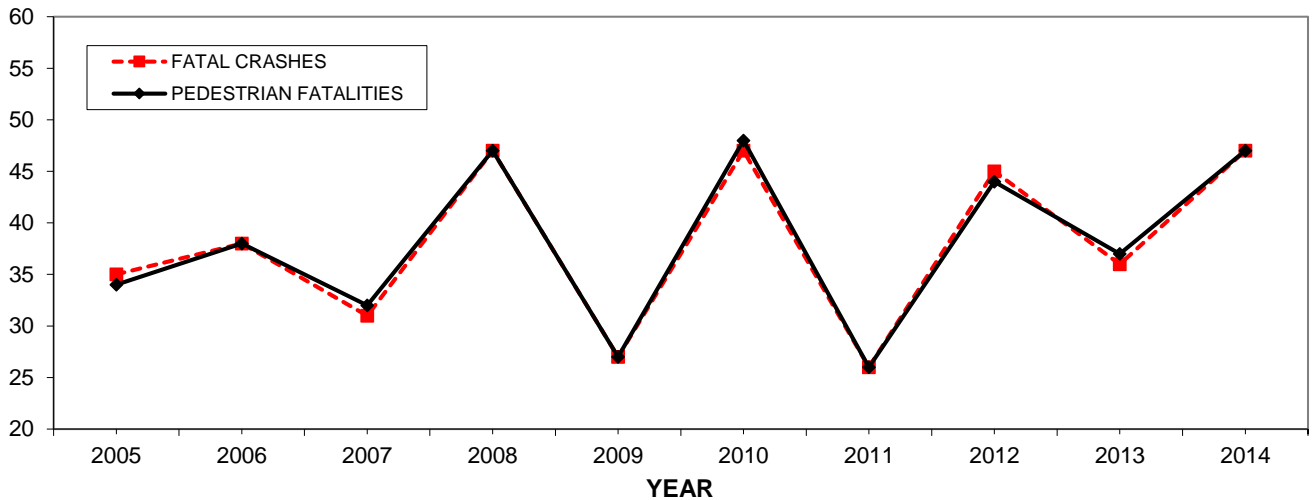


REPORTED PEDESTRIAN INVOLVED CRASHES

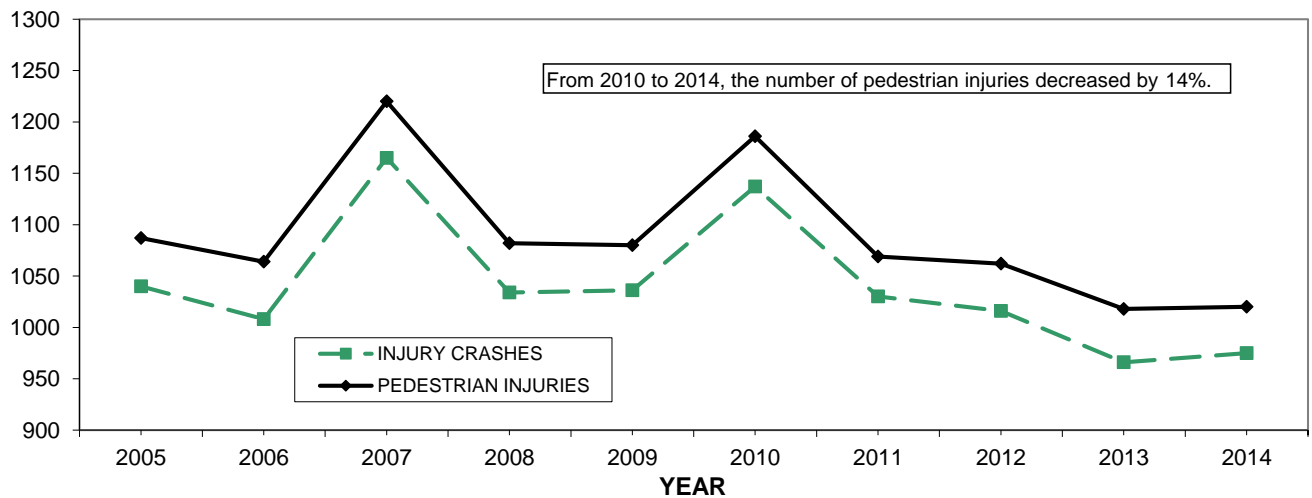
CRASHES, INJURIES AND CRASHES (2005-2014)

	PEDESTRIAN INVOLVED CRASHES BY SEVERITY (2005-2014)				PEDESTRIAN INJURIES AND FATALITIES (2005-2014)	
	PDO*	INJURY.	FATAL	TOTAL *	INJURIES	FATALITIES
2005	20	1040	35	1095	1087	34
2006	20	1008	38	1066	1064	38
2007	81	1165	31	1277	1220	32
2008	87	1034	47	1168	1082	47
2009	98	1036	27	1161	1080	27
2010	90	1137	47	1274	1186	48
2011	40	1030	26	1096	1069	26
2012	82	1016	45	1143	1062	44
2013	85	966	36	1087	1018	37
2014	105	975	47	1127	1020	47
TOTAL	708	10407	379	11494	10888	380

PEDESTRIAN INVOLVED FATAL CRASHES AND PEDESTRIAN FATALITIES



PEDESTRIAN INVOLVED INJURY CRASHES AND PEDESTRIAN INJURIES

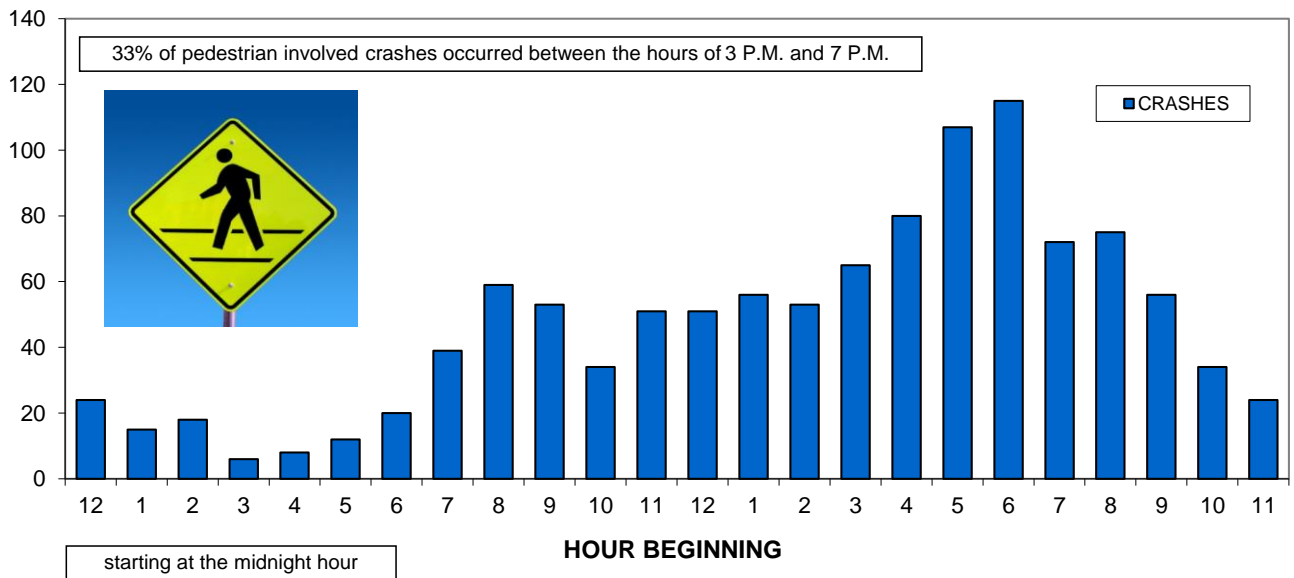


* see Data Limitations, page 2

REPORTED PEDESTRIAN INVOLVED CRASHES

2014 PEDESTRIAN INVOLVED CRASHES BY HOUR OF DAY

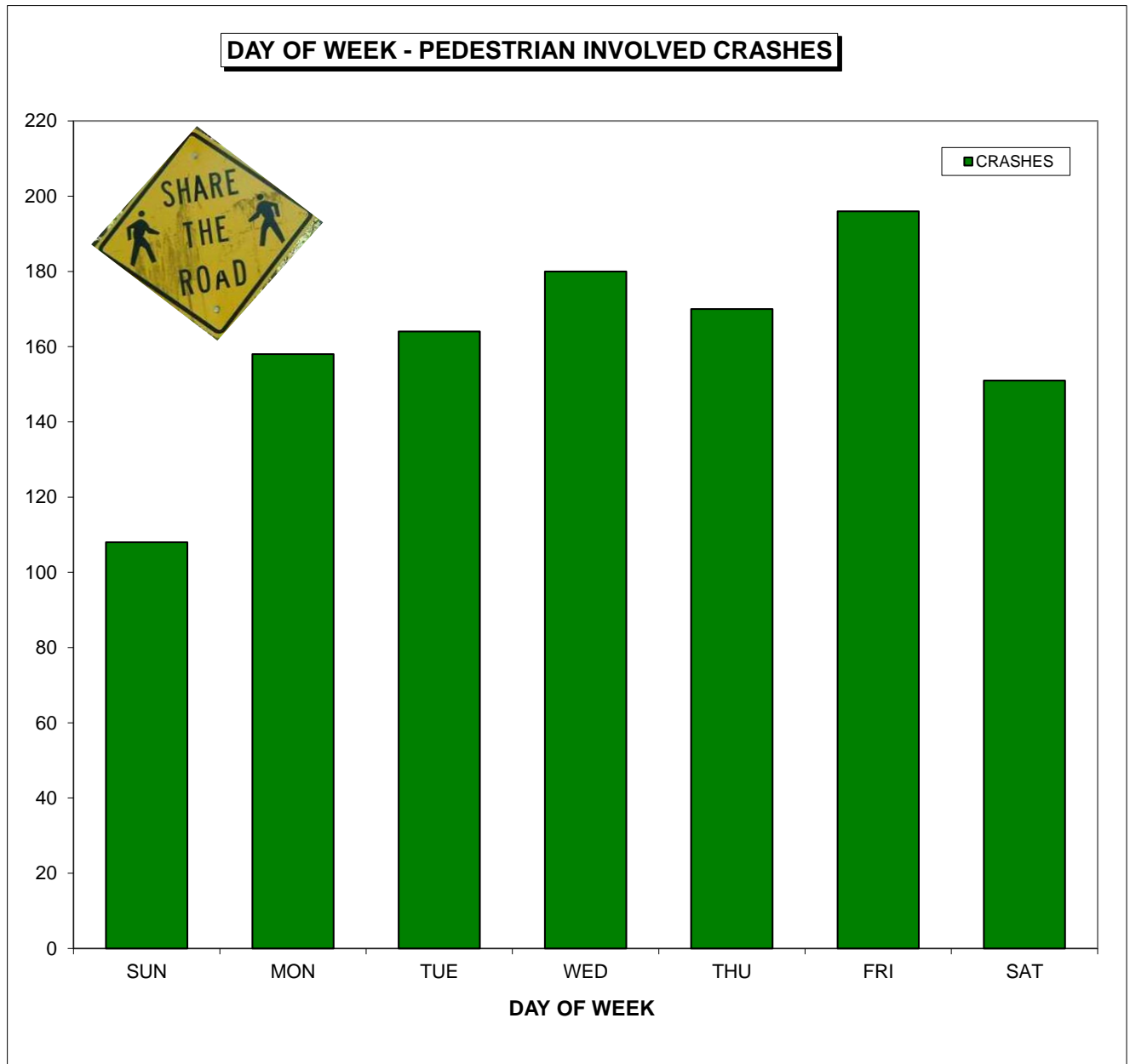
	CRASHES		INJURY		FATAL	
	CRASHES	%	CRASHES	%	CRASHES	%
MIDNIGHT - 12:59 AM	24	2.13%	20	2.05%	3	6.38%
1:00 AM - 1:59 AM	15	1.33%	11	1.13%	1	2.13%
2:00 AM - 2:59 AM	18	1.60%	17	1.74%	1	2.13%
3:00 AM - 3:59 AM	6	0.53%	5	0.51%	1	2.13%
4:00 AM - 4:59 AM	8	0.71%	7	0.72%	1	2.13%
5:00 AM - 5:59 AM	12	1.06%	9	0.92%	2	4.26%
6:00 AM - 6:59 AM	20	1.77%	19	1.95%	0	0.00%
7:00 AM - 7:59 AM	39	3.46%	32	3.28%	3	6.38%
8:00 AM - 8:59 AM	59	5.24%	49	5.03%	0	0.00%
9:00 AM - 9:59 AM	53	4.70%	43	4.41%	4	8.51%
10:00 AM - 10:59 AM	34	3.02%	29	2.97%	0	0.00%
11:00 AM - 11:59 AM	51	4.53%	44	4.51%	2	4.26%
NOON	51	4.53%	43	4.41%	2	4.26%
1:00 PM - 1:59 PM	56	4.97%	48	4.92%	1	2.13%
2:00 PM - 2:59 PM	53	4.70%	45	4.62%	1	2.13%
3:00 PM - 3:59 PM	65	5.77%	60	6.15%	1	2.13%
4:00 PM - 4:59 PM	80	7.10%	72	7.38%	0	0.00%
5:00 PM - 5:59 PM	107	9.49%	96	9.85%	2	4.26%
6:00 PM - 6:59 PM	115	10.20%	100	10.26%	7	14.89%
7:00 PM - 7:59 PM	72	6.39%	63	6.46%	5	10.64%
8:00 PM - 8:59 PM	75	6.65%	63	6.46%	5	10.64%
9:00 PM - 9:59 PM	56	4.97%	48	4.92%	3	6.38%
10:00 PM - 10:59 PM	34	3.02%	29	2.97%	2	4.26%
11:00 PM - 11:59 PM	24	2.13%	23	2.36%	0	0.00%
TOTAL	1127		975		47	



REPORTED PEDESTRIAN INVOLVED CRASHES

2014 PEDESTRIAN INVOLVED CRASHES BY DAY OF WEEK

	CRASHES		INJURY		FATAL	
		%	CRASHES	%	CRASHES	%
SUNDAY	108	9.58%	96	9.85%	4	8.51%
MONDAY	158	14.02%	139	14.26%	7	14.89%
TUESDAY	164	14.55%	146	14.97%	4	8.51%
WEDNESDAY	180	15.97%	157	16.10%	5	10.64%
THURSDAY	170	15.08%	140	14.36%	6	12.77%
FRIDAY	196	17.39%	171	17.54%	10	21.28%
SATURDAY	151	13.40%	126	12.92%	11	23.40%
TOTAL	1127		975		47	

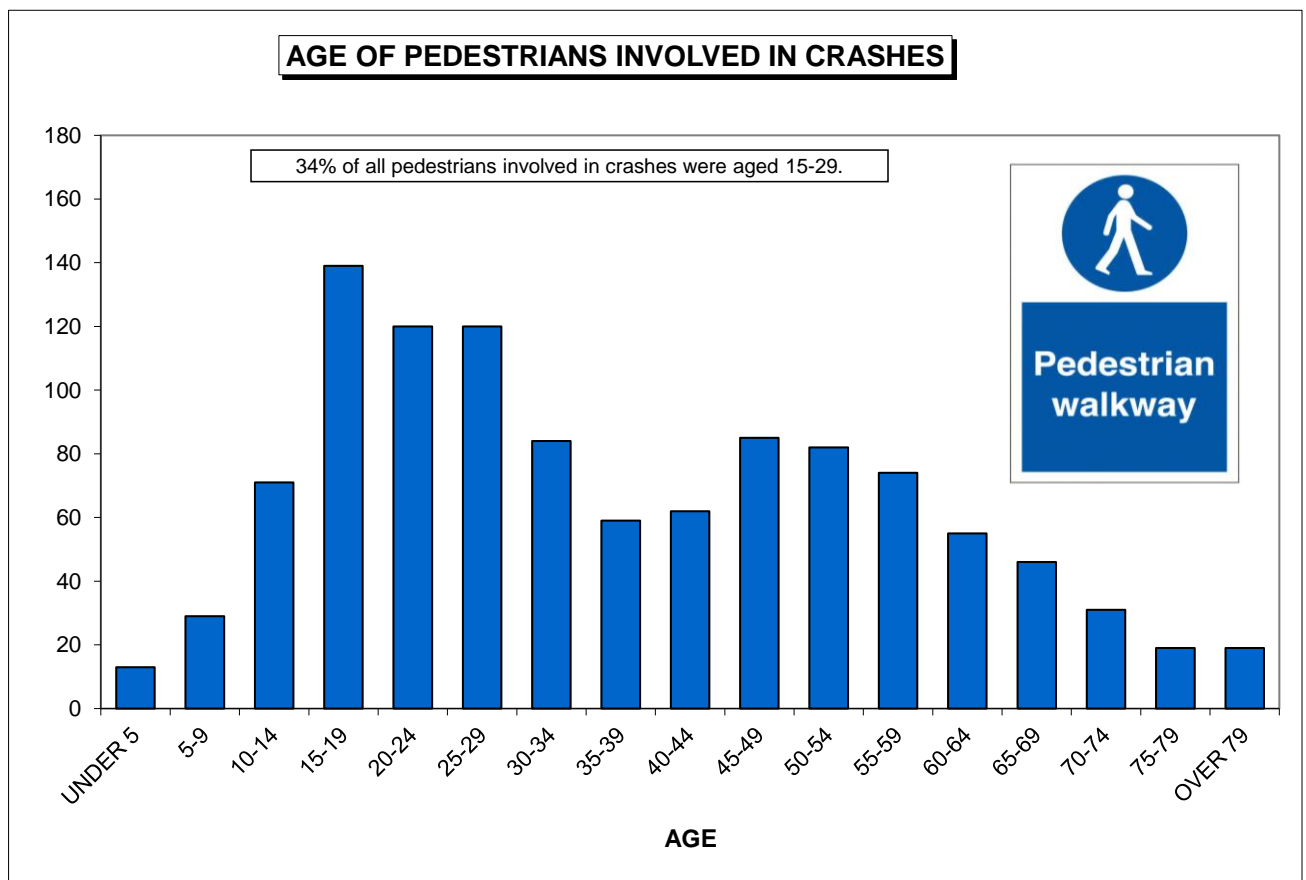


REPORTED PEDESTRIAN INVOLVED CRASHES

2014 CRASHES BY PEDESTRIAN AGE

AGE OF PEDESTRIANS INVOLVED IN CRASHES

	ALL PEDESTRIANS		PEDESTRIANS INJURED		PEDESTRIANS KILLED	
	PEDESTRIANS	%	PEDESTRIANS	%	PEDESTRIANS	%
UNDER 5	13	1.17%	10	1.04%	0	0.00%
5-9	29	2.62%	28	2.91%	0	0.00%
10-14	71	6.41%	64	6.65%	0	0.00%
15-19	139	12.55%	125	12.98%	4	8.51%
20-24	120	10.83%	104	10.80%	6	12.77%
25-29	120	10.83%	107	11.11%	2	4.26%
30-34	84	7.58%	73	7.58%	2	4.26%
35-39	59	5.32%	49	5.09%	3	6.38%
40-44	62	5.60%	56	5.82%	2	4.26%
45-49	85	7.67%	76	7.89%	2	4.26%
50-54	82	7.40%	70	7.27%	5	10.64%
55-59	74	6.68%	65	6.75%	4	8.51%
60-64	55	4.96%	47	4.88%	3	6.38%
65-69	46	4.15%	38	3.95%	4	8.51%
70-74	31	2.80%	22	2.28%	3	6.38%
75-79	19	1.71%	15	1.56%	3	6.38%
OVER 79	19	1.71%	14	1.45%	4	8.51%
TOTAL	1108		963		47	



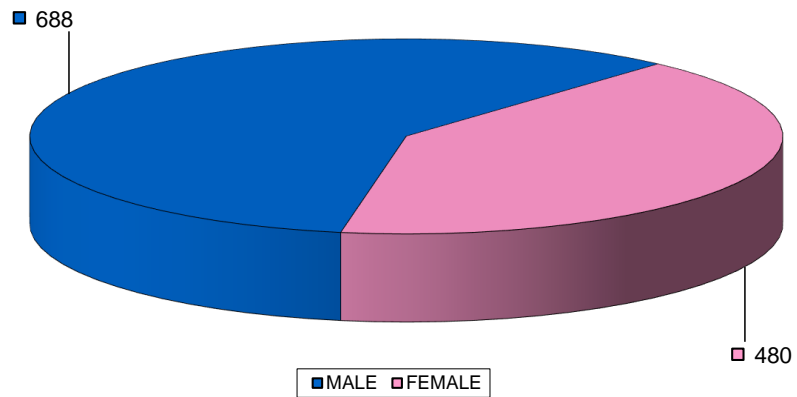
REPORTED PEDESTRIAN INVOLVED CRASHES

2014 CRASHES BY PEDESTRIAN SEX

SEX OF PEDESTRIANS INVOLVED IN CRASHES

	ALL	PEDESTRIANS		PEDESTRIANS	
	PEDESTRIANS	%	INJURED	%	KILLED
MALE	688	57.96%	587	57.55%	28
FEMALE	480	40.44%	422	41.37%	19
UNKNOWN	19	1.60%	11	1.08%	0
TOTAL	1187		1020		47

SEX OF PEDESTRIANS INVOLVED IN CRASHES

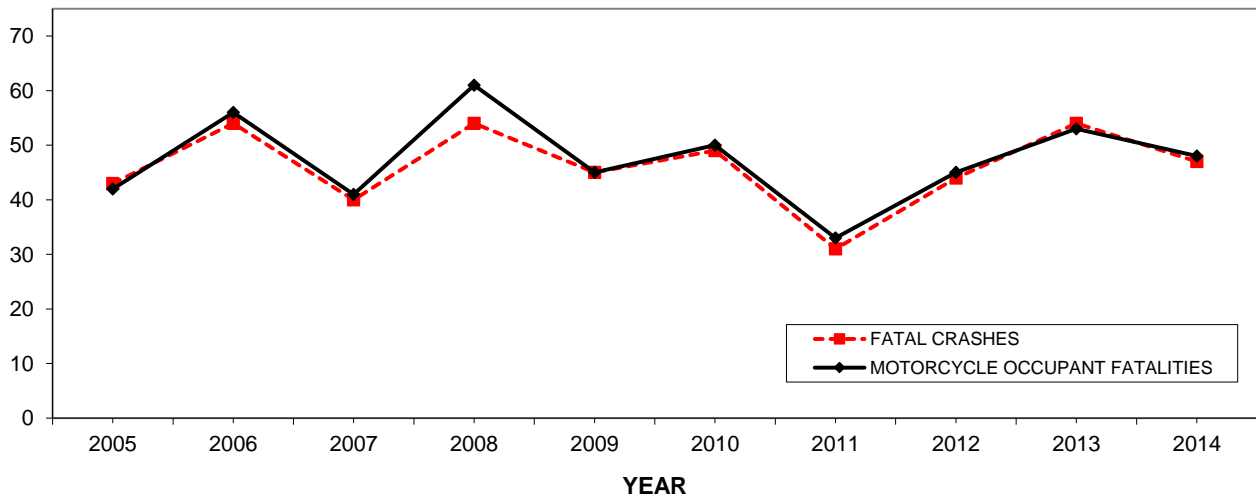


REPORTED MOTORCYCLE INVOLVED CRASHES

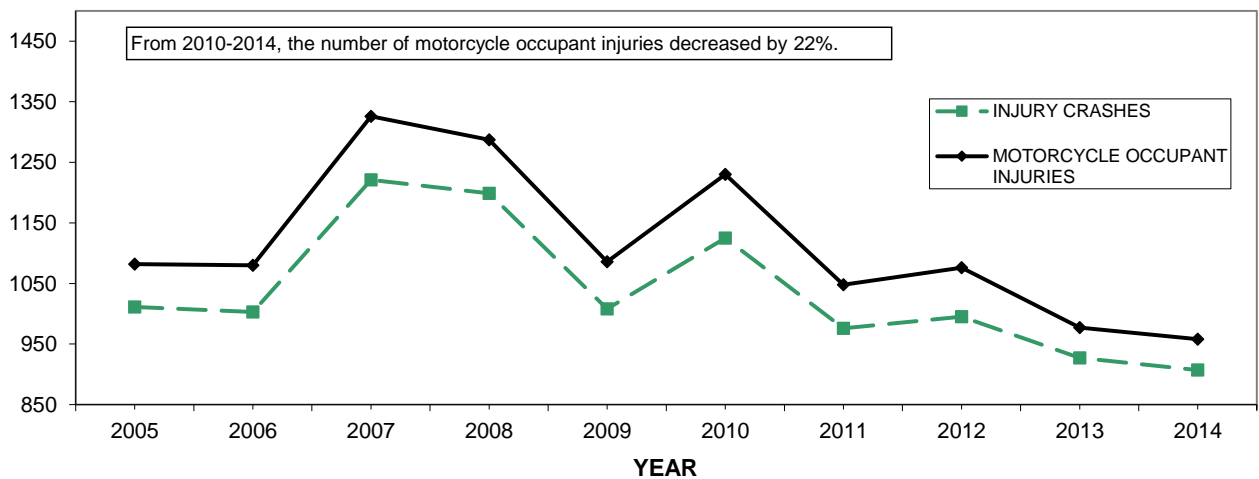
CRASHES, INJURIES, AND FATALITIES (2005-2014)

	MOTORCYCLE INVOLVED CRASHES BY SEVERITY (2005-2014)				MOTORCYCLE OCCUPANT INJURIES AND FATALITIES (2005-2014)	
	PDO*	INJURY	FATAL	TOTAL*	INJURIES	FATALITIES
2005	212	1011	43	1266	1082	42
2006	169	1003	54	1226	1080	56
2007	360	1221	40	1621	1326	41
2008	339	1199	54	1592	1287	61
2009	325	1008	45	1378	1086	45
2010	338	1125	49	1512	1230	50
2011	206	976	31	1213	1048	33
2012	361	995	44	1400	1076	45
2013	343	927	54	1324	977	53
2014	314	907	47	1268	958	48
TOTAL	2967	10372	461	13800	11150	474

MOTORCYCLE INVOLVED FATAL CRASHES AND MOTORCYCLE OCCUPANT FATALITIES



MOTORCYCLE INVOLVED INJURY CRASHES AND MOTORCYCLE OCCUPANT INJURIES

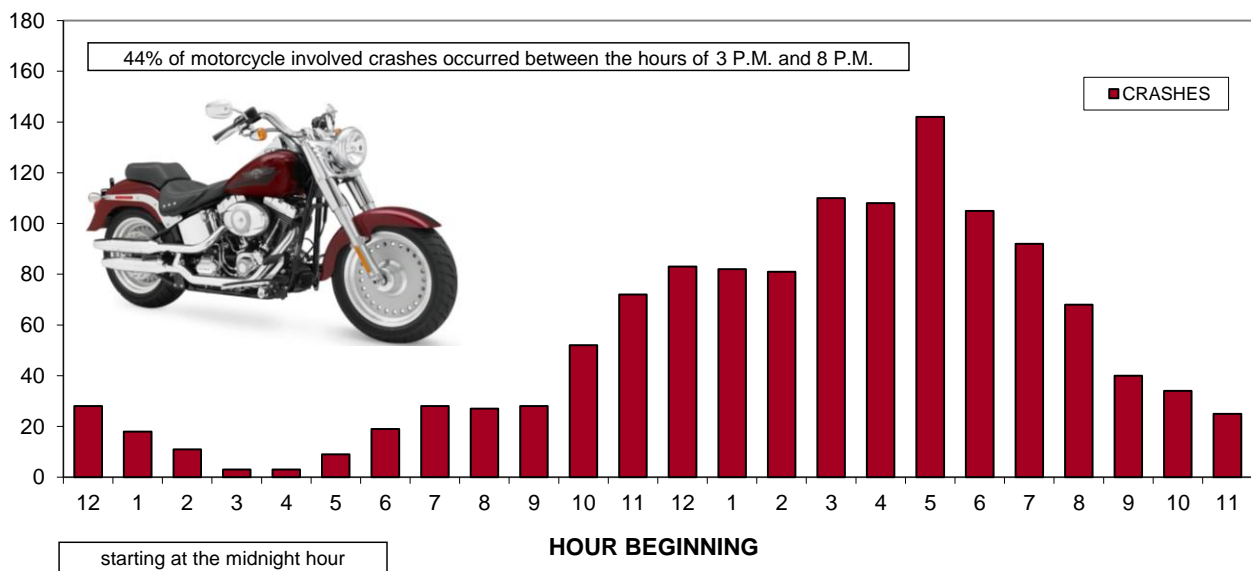


* see Data Limitations, page 2

REPORTED MOTORCYCLE INVOLVED CRASHES

2014 MOTORCYCLE INVOLVED CRASHES BY HOUR OF DAY

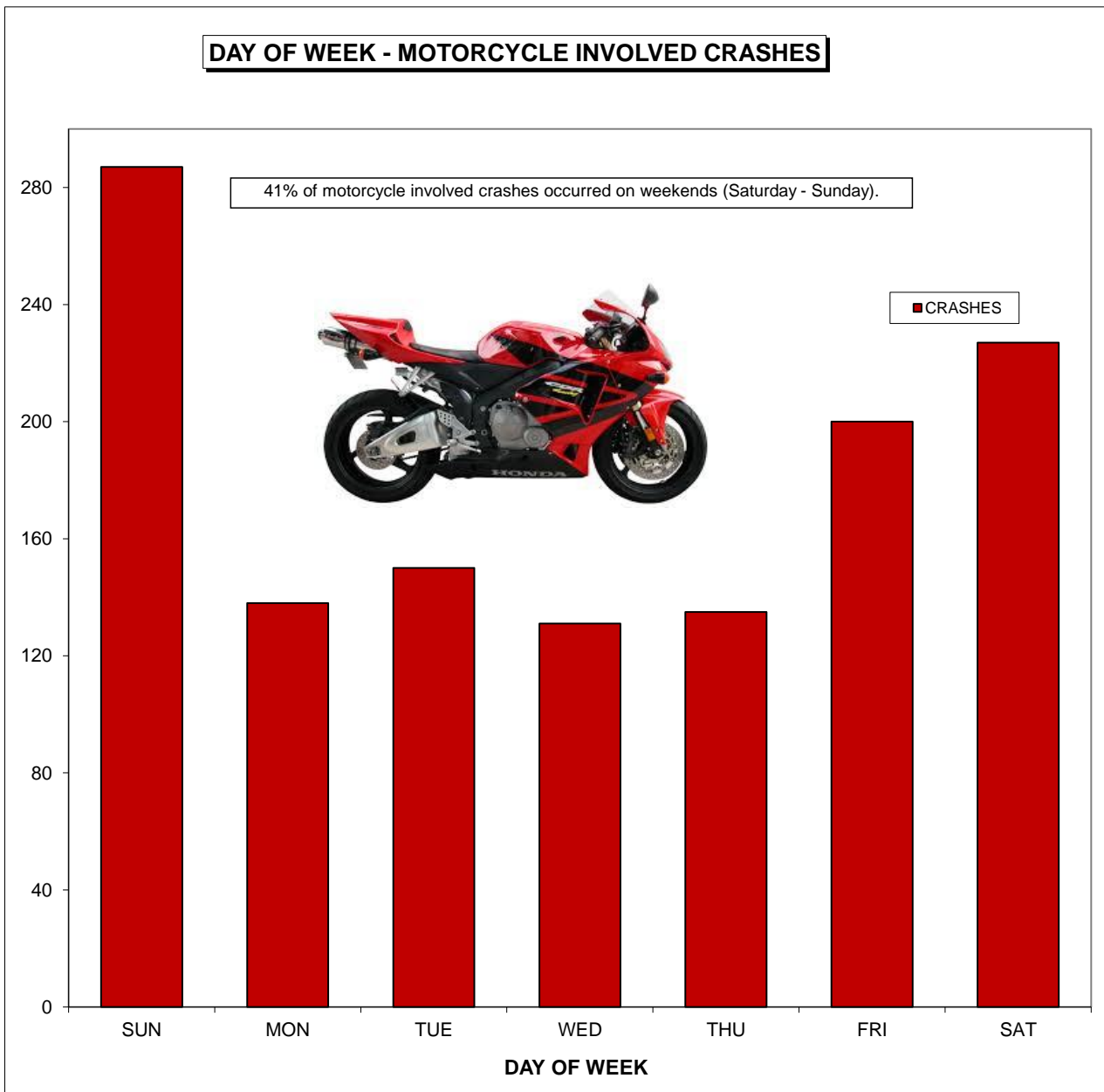
	CRASHES		INJURY		FATAL	
	CRASHES	%	CRASHES	%	CRASHES	%
MIDNIGHT - 12:59 AM	28	2.21%	16	1.76%	3	6.38%
1:00 AM - 1:59 AM	18	1.42%	14	1.54%	1	2.13%
2:00 AM - 2:59 AM	11	0.87%	8	0.88%	1	2.13%
3:00 AM - 3:59 AM	3	0.24%	3	0.33%	0	0.00%
4:00 AM - 4:59 AM	3	0.24%	1	0.11%	1	2.13%
5:00 AM - 5:59 AM	9	0.71%	6	0.66%	1	2.13%
6:00 AM - 6:59 AM	19	1.50%	9	0.99%	2	4.26%
7:00 AM - 7:59 AM	28	2.21%	21	2.32%	0	0.00%
8:00 AM - 8:59 AM	27	2.13%	19	2.09%	0	0.00%
9:00 AM - 9:59 AM	28	2.21%	20	2.21%	1	2.13%
10:00 AM - 10:59 AM	52	4.10%	37	4.08%	2	4.26%
11:00 AM - 11:59 AM	72	5.68%	55	6.06%	1	2.13%
NOON	83	6.55%	63	6.95%	2	4.26%
1:00 PM - 1:59 PM	82	6.47%	50	5.51%	6	12.77%
2:00 PM - 2:59 PM	81	6.39%	55	6.06%	1	2.13%
3:00 PM - 3:59 PM	110	8.68%	83	9.15%	1	2.13%
4:00 PM - 4:59 PM	108	8.52%	75	8.27%	6	12.77%
5:00 PM - 5:59 PM	142	11.20%	98	10.80%	4	8.51%
6:00 PM - 6:59 PM	105	8.28%	78	8.60%	5	10.64%
7:00 PM - 7:59 PM	92	7.26%	72	7.94%	3	6.38%
8:00 PM - 8:59 PM	68	5.36%	55	6.06%	3	6.38%
9:00 PM - 9:59 PM	40	3.15%	27	2.98%	1	2.13%
10:00 PM - 10:59 PM	34	2.68%	25	2.76%	1	2.13%
11:00 PM - 11:59 PM	25	1.97%	17	1.87%	1	2.13%
TOTAL	1268		907		47	



REPORTED MOTORCYCLE INVOLVED CRASHES

2014 MOTORCYCLE INVOLVED CRASHES BY DAY OF WEEK

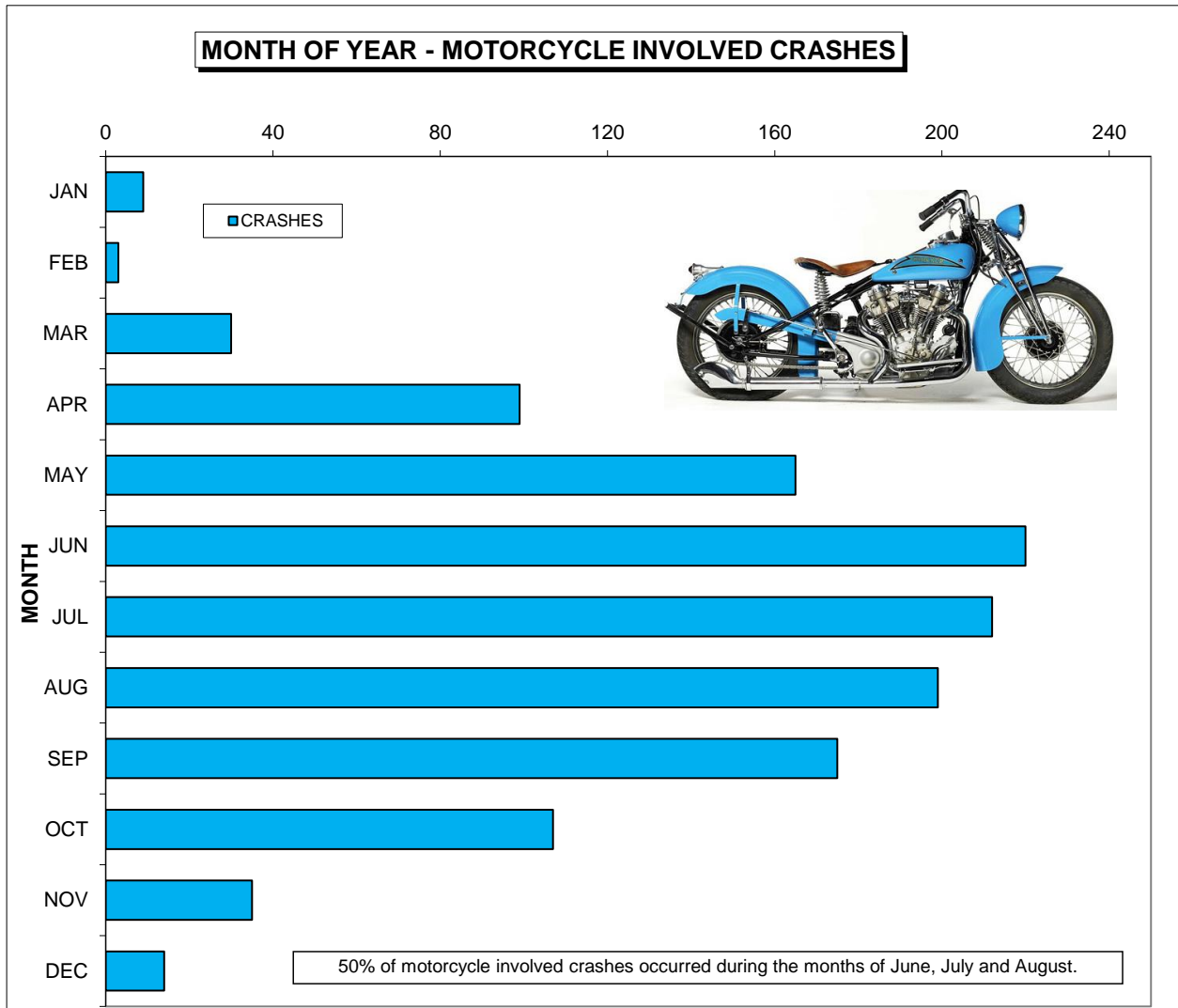
	CRASHES		INJURY		FATAL	
	CRASHES	%	CRASHES	%	CRASHES	%
SUNDAY	287	22.63%	214	23.59%	13	27.66%
MONDAY	138	10.88%	101	11.14%	5	10.64%
TUESDAY	150	11.83%	103	11.36%	6	12.77%
WEDNESDAY	131	10.33%	94	10.36%	2	4.26%
THURSDAY	135	10.65%	85	9.37%	5	10.64%
FRIDAY	200	15.77%	139	15.33%	7	14.89%
SATURDAY	227	17.90%	171	18.85%	9	19.15%
TOTAL	1268		907		47	



REPORTED MOTORCYCLE INVOLVED CRASHES

2014 MOTORCYCLE INVOLVED CRASHES BY MONTH

	CRASHES		INJURY		FATAL	
	CRASHES	%	CRASHES	%	CRASHES	%
JANUARY	9	0.71%	5	0.55%	1	2.13%
FEBRUARY	3	0.24%	3	0.33%	0	0.00%
MARCH	30	2.37%	19	2.09%	1	2.13%
APRIL	99	7.81%	74	8.16%	3	6.38%
MAY	165	13.01%	121	13.34%	5	10.64%
JUNE	220	17.35%	163	17.97%	10	21.28%
JULY	212	16.72%	161	17.75%	10	21.28%
AUGUST	199	15.69%	144	15.88%	8	17.02%
SEPTEMBER	175	13.80%	117	12.90%	5	10.64%
OCTOBER	107	8.44%	69	7.61%	4	8.51%
NOVEMBER	35	2.76%	26	2.87%	0	0.00%
DECEMBER	14	1.10%	5	0.55%	0	0.00%
TOTAL	1268		907		47	



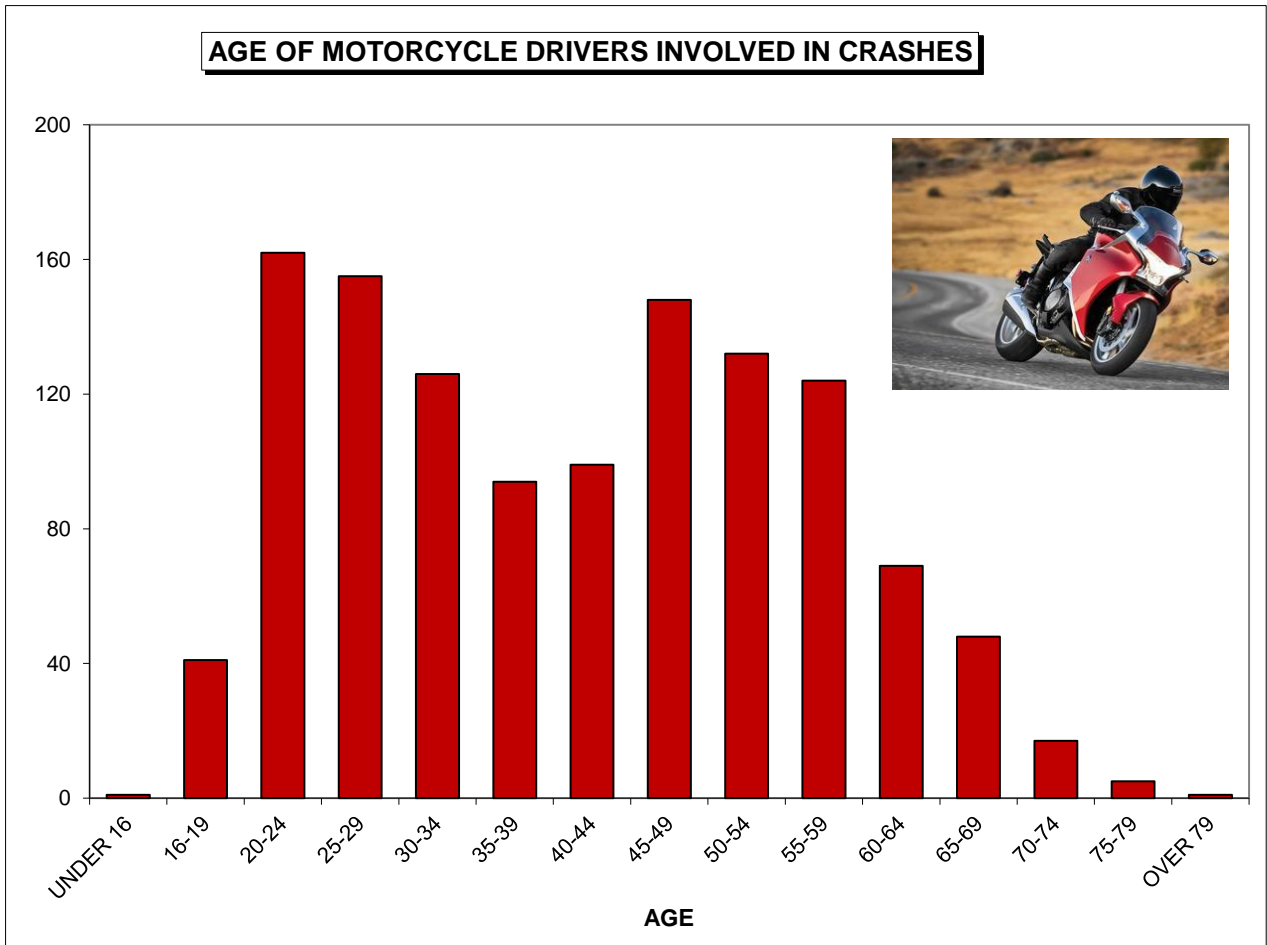
REPORTED MOTORCYCLE INVOLVED CRASHES

2014 CRASHES BY MOTORCYCLE DRIVER AGE

AGE OF MOTORCYCLE DRIVERS INVOLVED IN CRASHES

	ALL MOTORCYCLE DRIVERS		MOTORCYCLE DRIVERS INJURED		MOTORCYCLE DRIVERS KILLED	
		%		%		%
UNDER 16	1	0.08%	1	0.11%	0	0.00%
16-19	41	3.36%	34	3.81%	0	0.00%
20-24	162	13.26%	120	13.44%	6	13.04%
25-29	155	12.68%	111	12.43%	7	15.22%
30-34	126	10.31%	94	10.53%	5	10.87%
35-39	94	7.69%	62	6.94%	5	10.87%
40-44	99	8.10%	73	8.17%	3	6.52%
45-49	148	12.11%	110	12.32%	6	13.04%
50-54	132	10.80%	96	10.75%	8	17.39%
55-59	124	10.15%	89	9.97%	2	4.35%
60-64	69	5.65%	46	5.15%	2	4.35%
65-69	48	3.93%	37	4.14%	1	2.17%
70-74	17	1.39%	15	1.68%	0	0.00%
75-79	5	0.41%	4	0.45%	1	2.17%
OVER 79	1	0.08%	1	0.11%	0	0.00%
TOTAL	1222		893		46	

AGE OF MOTORCYCLE DRIVERS INVOLVED IN CRASHES

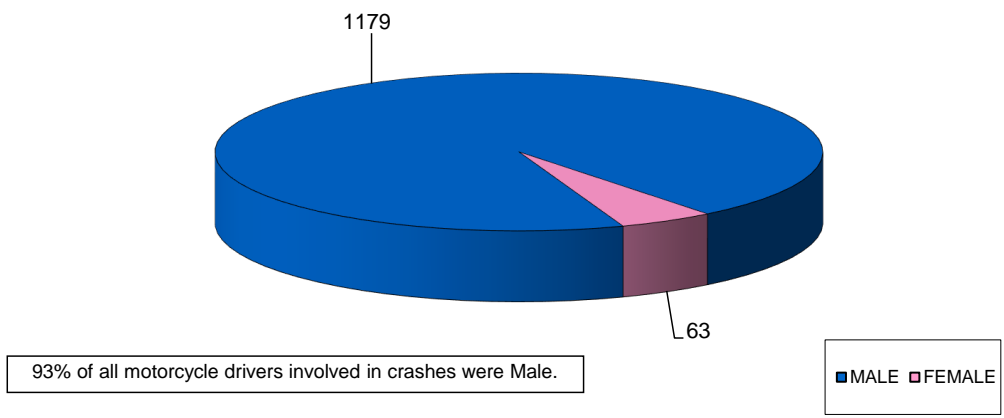


REPORTED MOTORCYCLE INVOLVED CRASHES

2014 CRASHES BY MOTORCYCLE DRIVER SEX

	SEX OF MOTORCYCLE DRIVERS INVOLVED IN CRASHES					
	ALL MOTORCYCLE DRIVERS	%	MOTORCYCLE DRIVERS INJURED	%	MOTORCYCLE DRIVERS KILLED	%
MALE	1179	92.98%	885	95.57%	42	91.30%
FEMALE	63	4.97%	40	4.32%	4	8.70%
UNKNOWN	26	2.05%	1	0.11%	0	0.00%
TOTAL	1268		926		46	

SEX OF MOTORCYCLE DRIVERS INVOLVED IN CRASHES



REPORTED MOTORCYCLE INVOLVED CRASHES

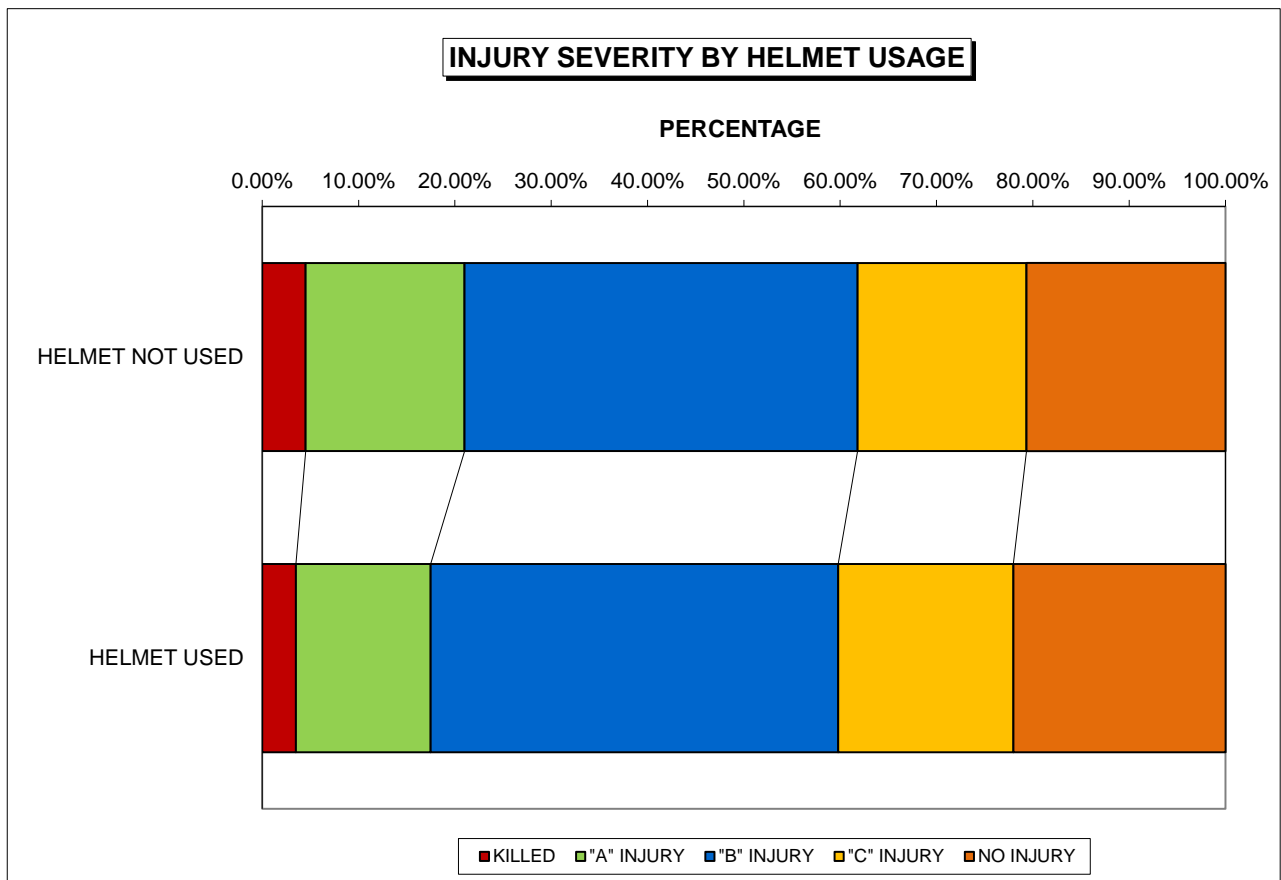


2014 CRASHES BY HELMET USAGE

INJURY SEVERITY BY HELMET USAGE FOR MOTORCYCLE OCCUPANTS

	HELMET NOT USED	%	HELMET USED	%	TOTAL (excluding unknown)	%
KILLED	26	4.51%	20	3.50%	46	3.95%
"A" INJURY	95	16.49%	80	13.99%	175	15.03%
"B" INJURY	235	40.80%	242	42.31%	479	41.15%
"C" INJURY	101	17.53%	104	18.18%	206	17.70%
NO INJURY	119	20.66%	126	22.03%	258	22.16%
TOTAL	576		572		1164	

	UNKNOWN	%	TOTAL (including unknown)	%
KILLED	2	1.05%	48	3.55%
"A" INJURY	15	7.89%	190	14.03%
"B" INJURY	44	23.16%	523	38.63%
"C" INJURY	39	20.53%	245	18.09%
NO INJURY	90	47.37%	348	25.70%
TOTAL	190		1354	



TRAFFIC CRASH GLOSSARY

The following includes definitions of terms used in this report. Many of these definitions are identical to or derived from definitions presented in the "AMERICAN NATIONAL STANDARD MANUAL ON CLASSIFICATION OF MOTOR VEHICLE TRAFFIC CRASHES, SEVENTH EDITION, NATIONAL SAFETY COUNCIL, 2007".

"A" INJURY (INCAPACITATING INJURY)

any injury, other than a fatal injury, which prevents the injured person from walking, driving, or normally continuing the activities the person was capable of performing before the injury occurred (e.g., severe laceration, broken or distorted limb, skull or chest injury, abdominal injury, unconsciousness at or when taken from the accident scene, unable to leave the accident scene without assistance)

ALCOHOL INVOLVED CRASH

a motor vehicle traffic crash in which there is an indication that any driver or pedestrian had or may have consumed alcohol

"B" INJURY (NONINCAPACITATING EVIDENT INJURY)

any injury, other than a fatal injury or an incapacitating injury, which is evident to observers at the scene of the accident in which the injury occurred (e.g., lump on head, abrasions, bruises, minor lacerations)

"C" INJURY (POSSIBLE INJURY)

any injury reported or claimed which is not a fatal injury, incapacitating injury or nonincapacitating evident injury (e.g., momentary unconsciousness, claim of injuries not evident, limping, complaint of pain, nausea, hysteria)

CRASH

a set of events not under human control originating when control is lost and terminating when control is regained or when all persons and property are at rest and that includes at least one occurrence of injury or damage

APPENDIX

CONTRIBUTING FACTOR

that circumstance which most contributed to the motor vehicle traffic crash and is assigned to one vehicle or to one pedestrian

DRIVER

an occupant who is in actual physical control of a vehicle or, for an out-of-control vehicle, an occupant who was in control until control was lost

FATAL CRASH

a motor vehicle traffic crash that results in one or more fatalities within 30 (thirty) days of the date of the crash

FATALITY (FATAL INJURY)

any injury that results in death within 30 (thirty) days of the date of the crash

INJURY

bodily harm to a person that is not a fatal injury

INJURY CRASH

a motor vehicle traffic crash that results in one or more injuries or that results in one or more fatalities more than 30 (thirty) days after the date of the crash

INTERSTATE

a trafficway on the National System of Interstate and Defense Highways as defined in Section 101, Title 23, United States Code

LOCAL ROAD

any public roadway that is maintained by one of Connecticut's local political sub-divisions

APPENDIX

MOTOR VEHICLE

any motorized (mechanically or electrically powered) vehicle not operated on rails

MOTOR VEHICLE TRAFFIC CRASH

an crash involving one or more motor vehicles while being utilized to transport persons or property from one place to another on any publicly maintained way or place reserved or commonly employed for such use

MOTORCYCLE INVOLVED CRASH

a motor vehicle traffic crash in which at least one vehicle involved was a motorcycle

OCCUPANT

any person who is part of a vehicle

OTHER STATE ROUTE

a trafficway within a state trafficway system, but not an Interstate or U.S. Route

PASSENGER

any occupant of a vehicle other than its driver

PEDESTRIAN

any person who is not an occupant

PEDESTRIAN INVOLVED CRASH

a motor vehicle traffic crash in which at least one pedestrian is involved

PROPERTY DAMAGE ONLY (PDO) CRASH

a motor vehicle traffic crash in which no participants incurred a fatality or an injury

RESPONSIBLE DRIVER

the driver of the responsible vehicle

APPENDIX

RESPONSIBLE VEHICLE

the vehicle to which the contributing factor is assigned

TRACTOR-TRAILER INVOLVED CRASH

a motor vehicle traffic crash in which at least one tractor-trailer is involved

U.S. ROUTE

a trafficway numbered by the American Association of State Highway and Transportation Officials, but not an Interstate

VEHICLE

a transport device, or a unit, made up of connected transport devices, used for moving persons or property from one place to another and is neither an aircraft nor a watercraft

VEHICLE MILES OF TRAVEL (VMT)

the estimated number of miles driven by all motor vehicles on Connecticut's public roadways