

**Welcome**

**Public Information & Scoping Meeting**

**Improvements to the**

**Merritt Parkway / Route 7 Interchange**

**&**

**Merritt Parkway / Main Ave. Interchange**

**Project 102-269 - City of Norwalk**

**March 18, 2008**

Connecticut Department of Transportation



## Tonight's Presenters

- **Richard Armstrong** – *CTDOT, Principal Engineer*
- **Stephen Ulman** – *Purcell Assoc., Senior Traffic Engineer*



## Purpose of Tonight's Meeting

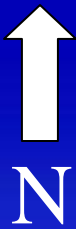
- **Presentation of Project Information**
- **“Scoping Meeting” - CEPA**
- **Public Input**



## Background

- **Lawsuit**
- **Re-evaluation of alternatives**
- **Coordination with Merritt Parkway Conservancy**





# Project Location

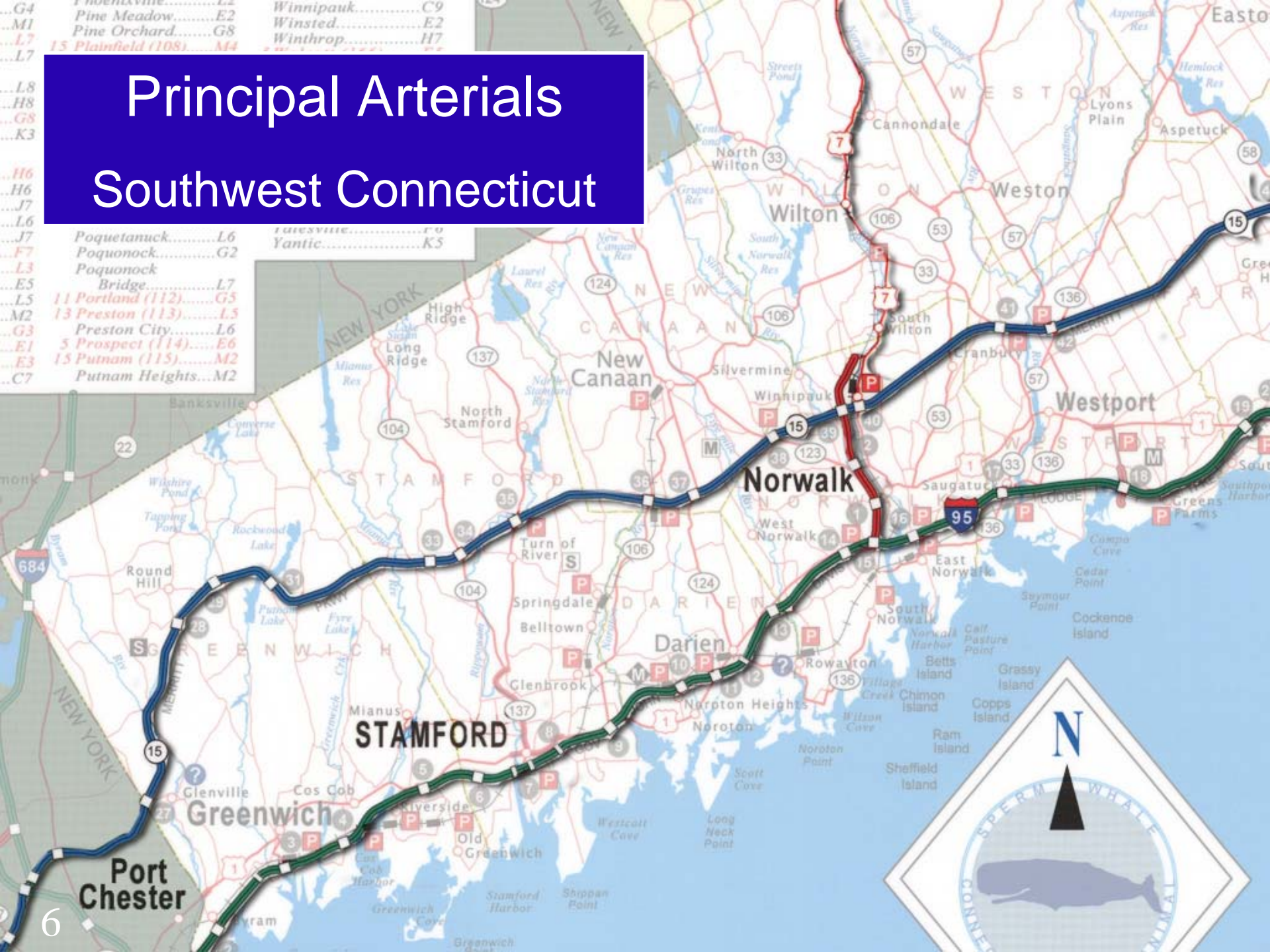


Phoenixville.....L2	Winnituk.....C9
Pine Meadow.....E2	Winsted.....E2
L7	Winthrop.....H7
L7	15 Plainfield (108).....M4

# Principal Arterials Southwest Connecticut

L6
L6
L7
L6
L7
F7
L3
E5
L5
M2
G3
E1
E3
C7

Poquetanuck.....L6	Yantic.....K5
Poquonock.....G2	
Poquonock Bridge.....L7	
11 Portland (112).....G5	
13 Preston (113).....L5	
Preston City.....L6	
5 Prospect (114).....E6	
15 Putnam (115).....M2	
Putnam Heights.....M2	





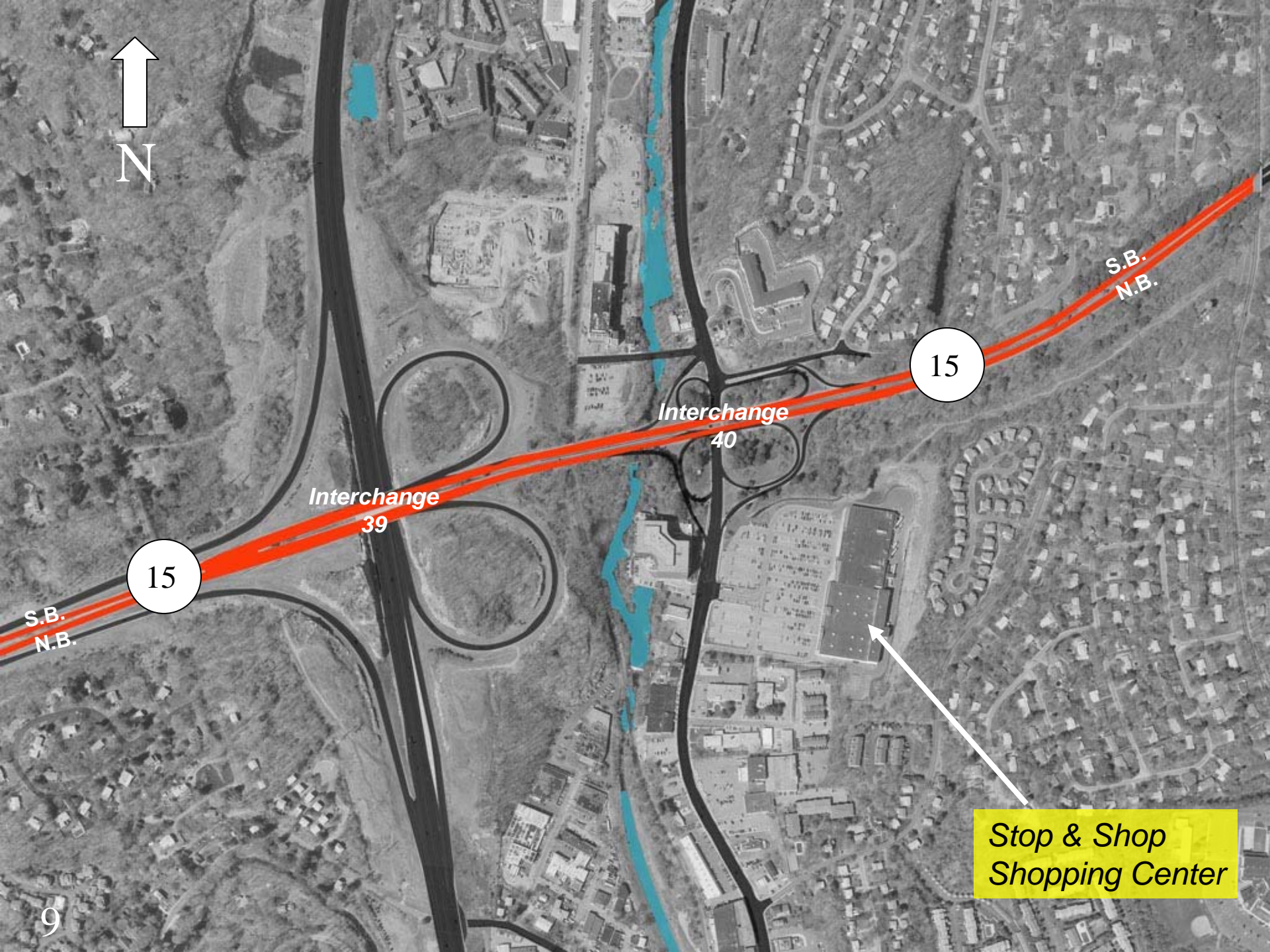


*Interchange  
39*

*Interchange  
40*

*Stop & Shop  
Shopping Center*





15

S.B.  
N.B.

Interchange  
39

Interchange  
40

15

S.B.  
N.B.

Stop & Shop  
Shopping Center



15

S.B.  
N.B.

Interchange  
39

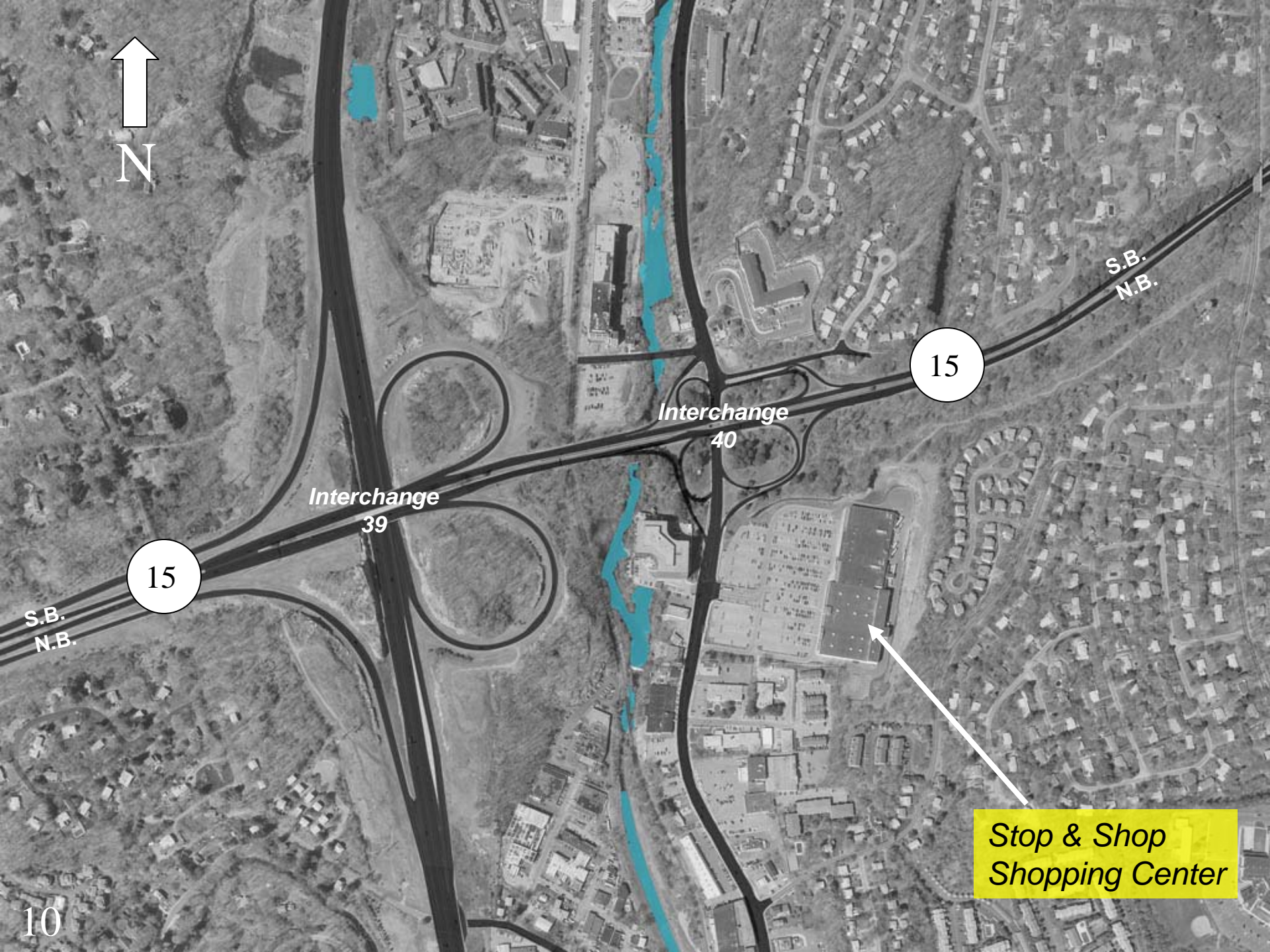
Interchange  
40

15

S.B.  
N.B.

Stop & Shop  
Shopping Center

10





7

S.B.  
N.B.

15

S.B.  
N.B.

Interchange  
40

Interchange  
39

15

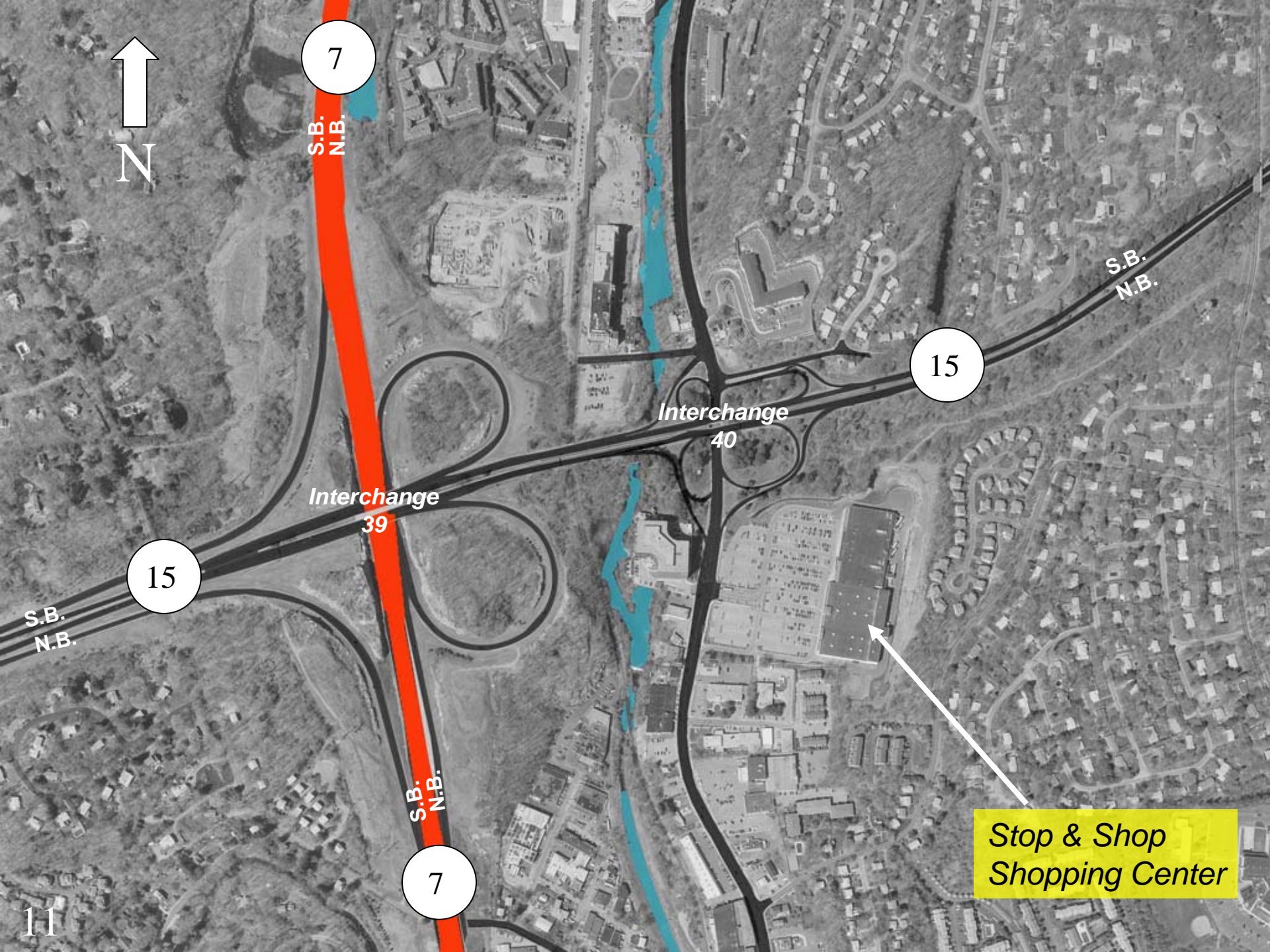
S.B.  
N.B.

7

S.B.  
N.B.

Stop & Shop  
Shopping Center

11





7

S.B.  
N.B.

15

S.B.  
N.B.

Interchange  
40

Interchange  
39

15

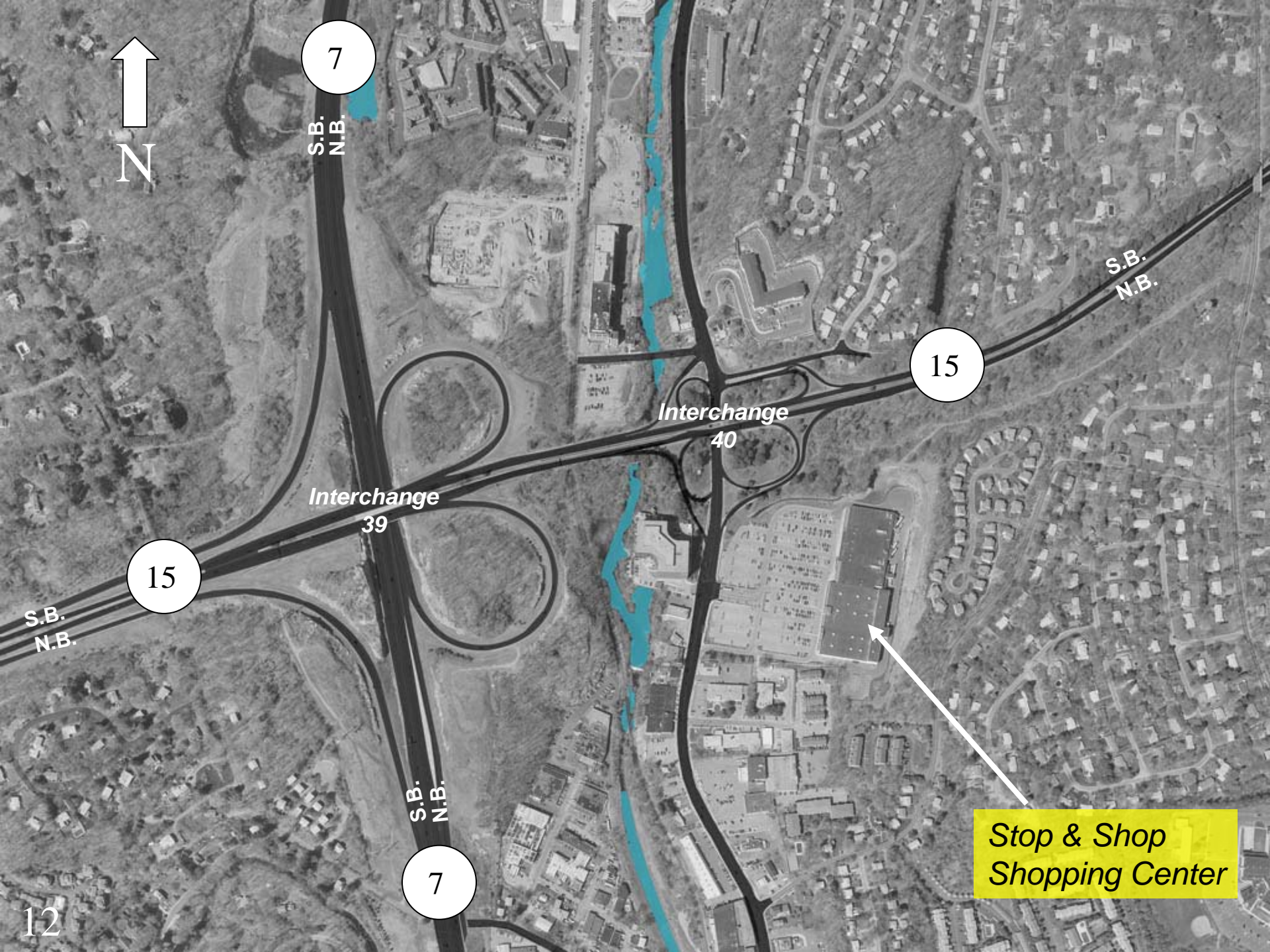
S.B.  
N.B.

S.B.  
N.B.

7

Stop & Shop  
Shopping Center

12





7

S.B.  
N.B.

15

S.B.  
N.B.

Interchange  
40

Interchange  
39

15

S.B.  
N.B.

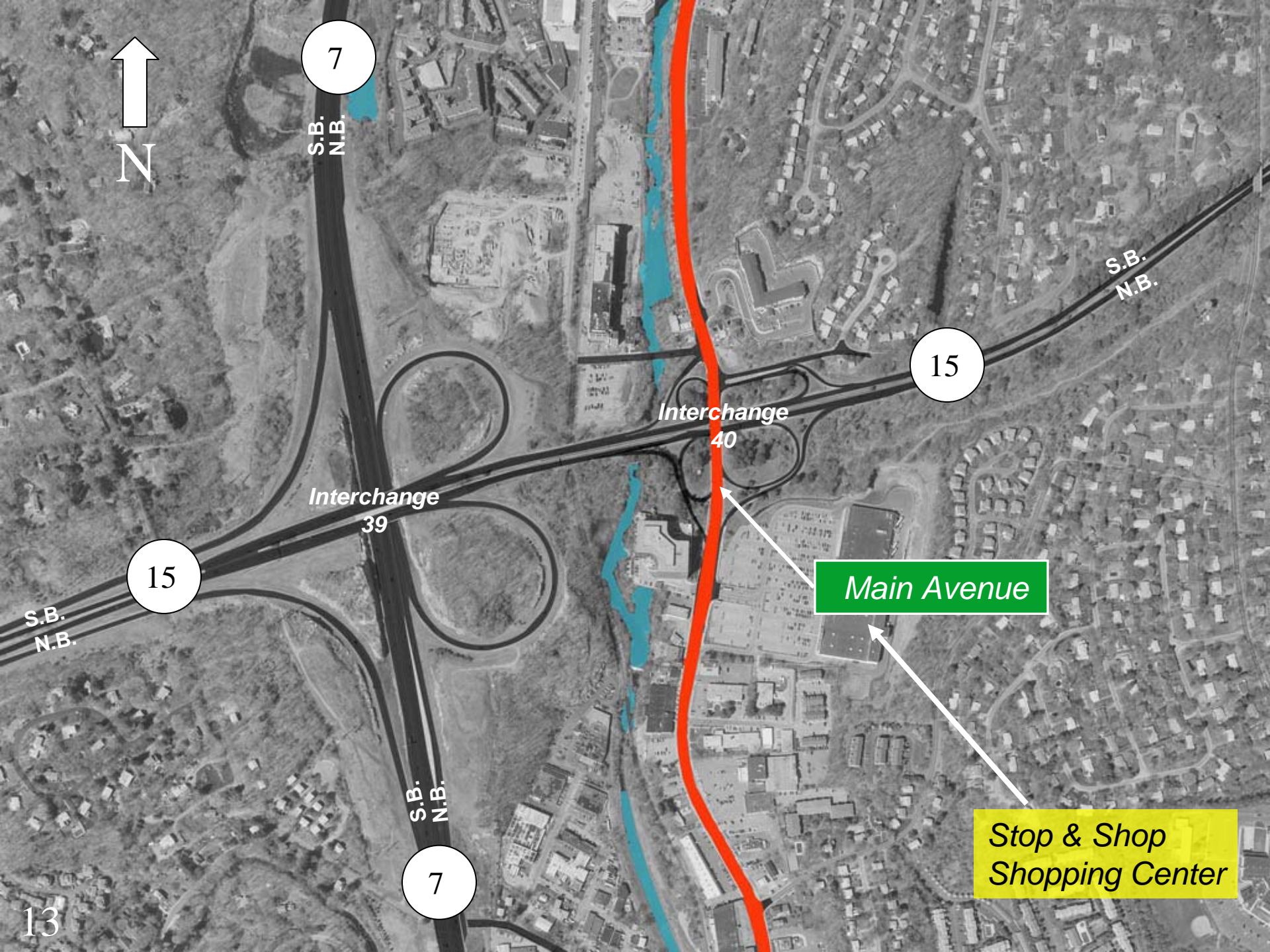
Main Avenue

S.B.  
N.B.

7

Stop & Shop  
Shopping Center

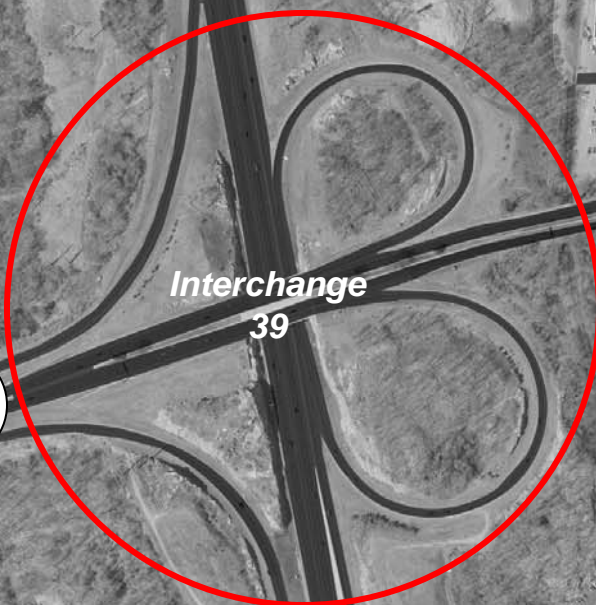
13





7

S.B.  
N.B.



Interchange  
39

15

S.B.  
N.B.



Interchange  
40

15

S.B.  
N.B.

Main Avenue

Stop & Shop  
Shopping Center

7

S.B.  
N.B.

14



7

S.B.  
N.B.

15

S.B.  
N.B.

15

S.B.  
N.B.

7

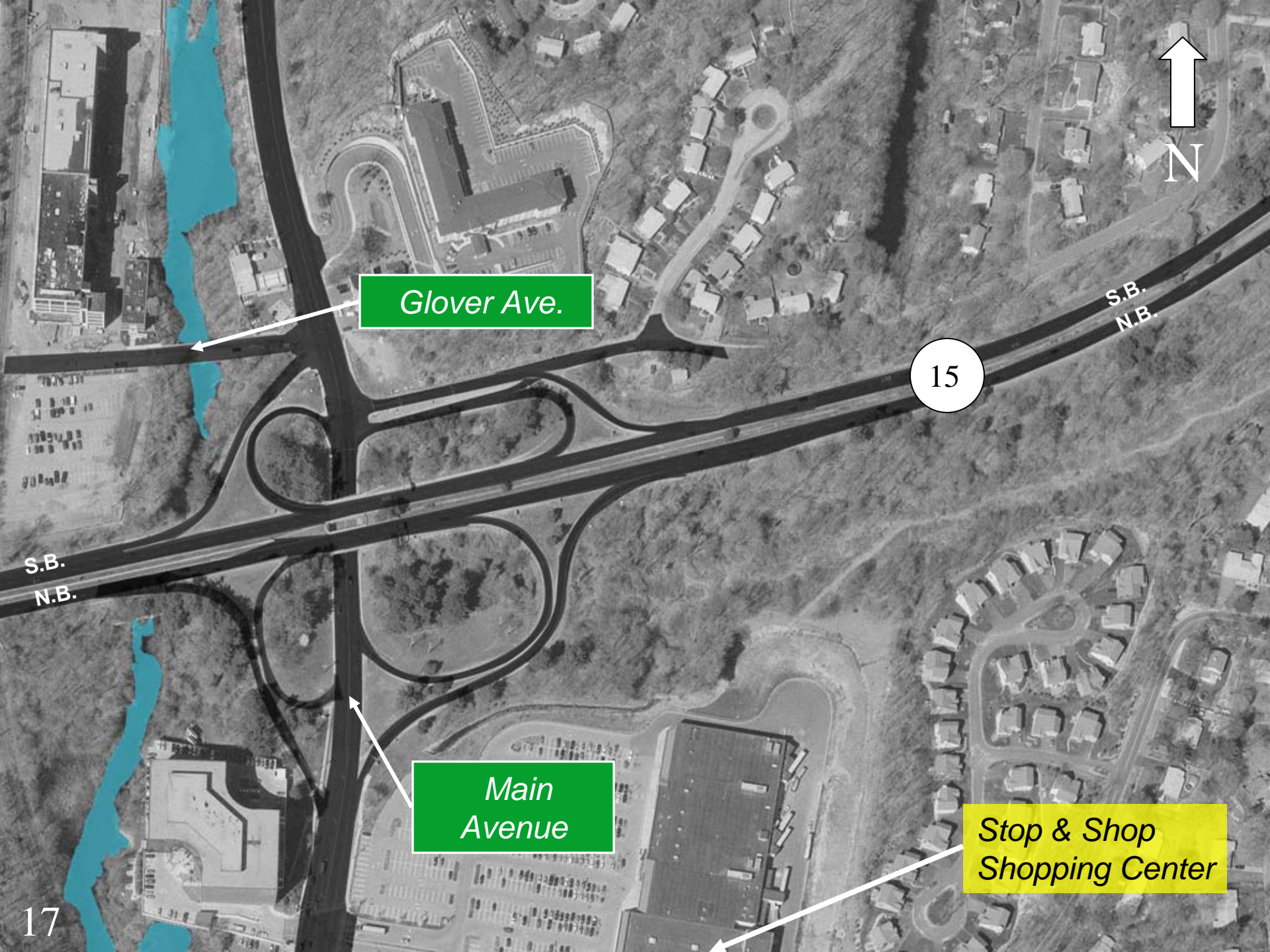
S.B.  
N.B.

15









*Glover Ave.*

15

S.B.  
N.B.

S.B.  
N.B.

*Main Avenue*

*Stop & Shop Shopping Center*

17



7

S.B.  
N.B.

15

S.B.  
N.B.

15

S.B.  
N.B.

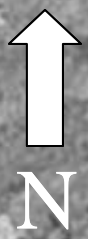
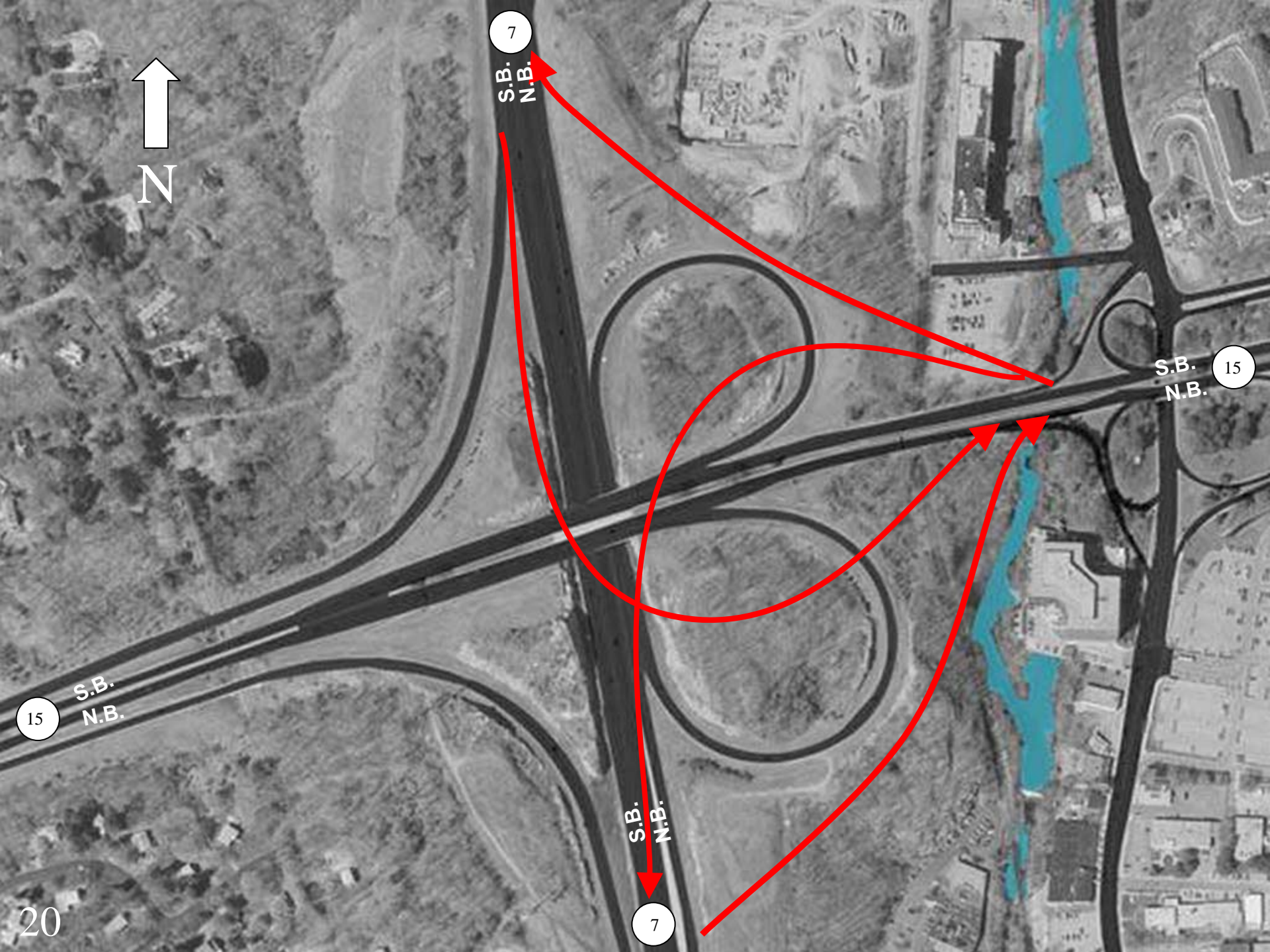
7

S.B.  
N.B.

18







7

S.B.  
N.B.

15

S.B.  
N.B.

15

S.B.  
N.B.

7

S.B.  
N.B.

20



# Historic Structures



*Parkway Over  
Metro North Railroad*

*Stop & Shop  
Shopping Center*

7

S.B.  
N.B.

15

S.B.  
N.B.

Interchange  
39

Interchange  
40

15

S.B.  
N.B.

S.B.  
N.B.

7





# Historic Structures

7  
S.B.  
N.B.

15  
S.B.  
N.B.

15  
S.B.  
N.B.

7  
S.B.  
N.B.



*Parkway Over  
Norwalk River*

*Stop & Shop  
Shopping Center*







# Historic Structures

*Glover Avenue  
Over Norwalk  
River*



*Stop & Shop  
Shopping Center*







# Historic Structures

*Parkway Over  
Main Avenue*



*Stop & Shop  
Shopping Center*



NO COMMERCIAL VEHICLES

15 SO  
N.Y. C  
NEXT RI

13-7  
RIGHT LANE

## **Alternatives Analysis**

- **Re-evaluated Original Alternatives**
- **Developed and evaluated new alternatives**
- **Coordinated with Merritt Parkway Conservancy – Cloverleaf**



# Alternatives Shortlist

Original Design



Alternate 12A

MPC “Ultimate Option” (Cloverleaf)



Modified Cloverleaf



Modified Cloverleaf w/ Option D1



Modified Cloverleaf w/ Option D2





# Original Design

Main Avenue

Stop & Shop Shopping Center

15

7

15

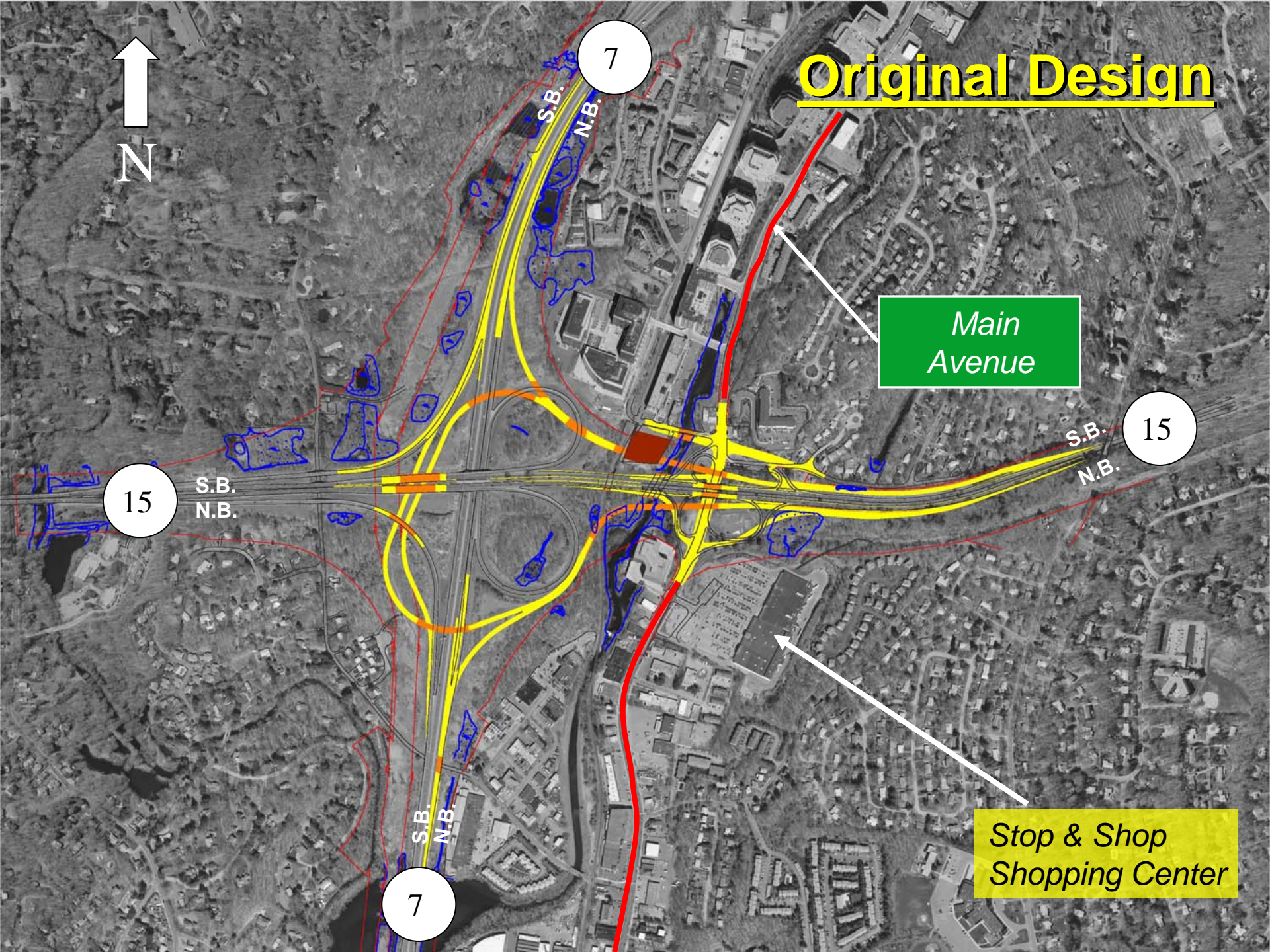
7

S.B.  
N.B.

S.B.  
N.B.

S.B.  
N.B.

S.B.  
N.B.





# Alternate 12A

Main Avenue

Stop & Shop Shopping Center

15

7

15

7

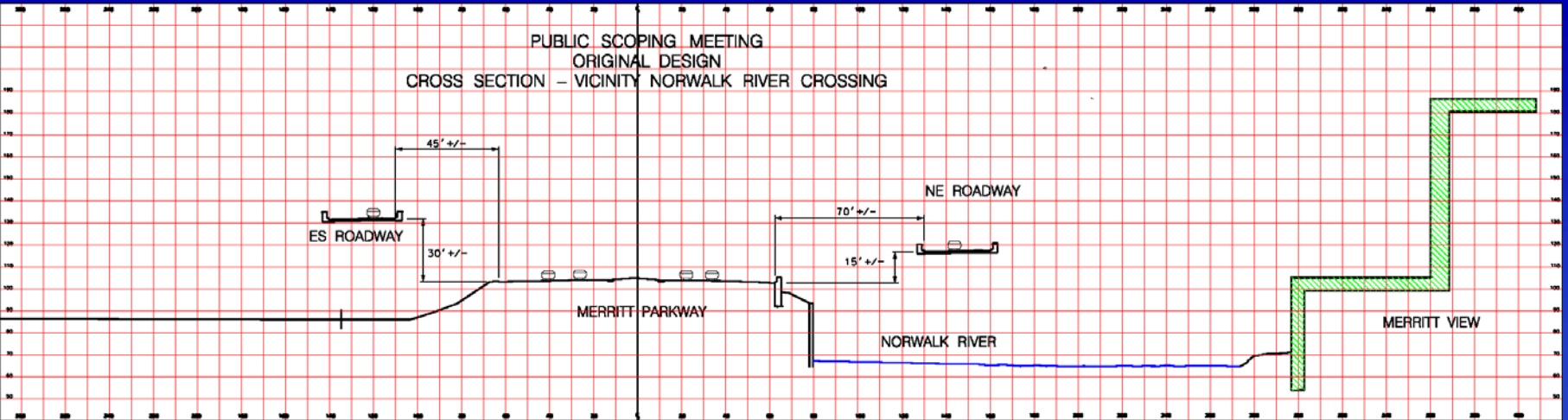
S.B.  
N.B.

S.B.  
N.B.

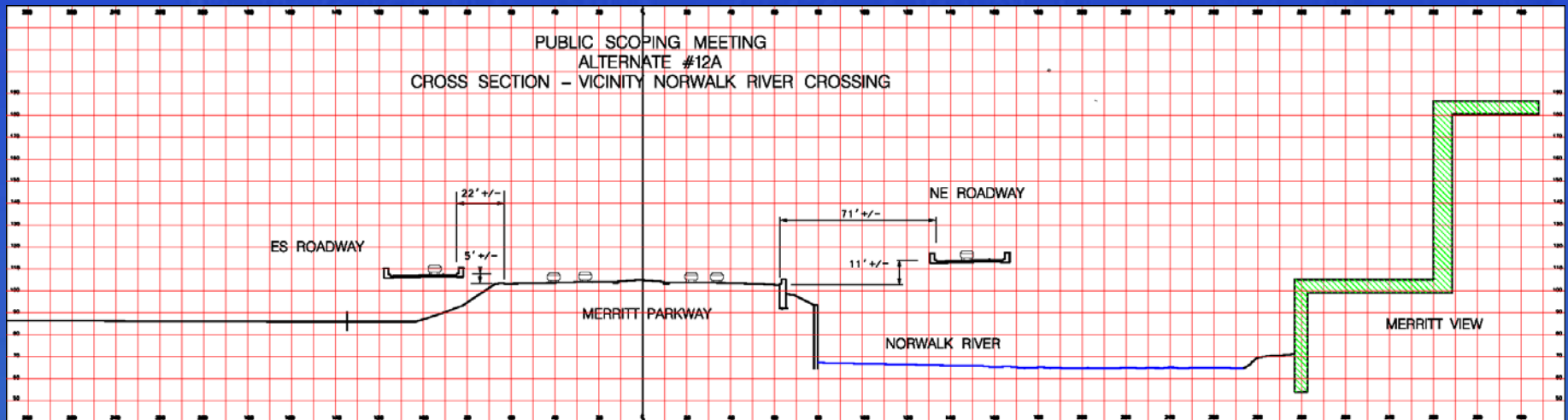
S.B.  
N.B.

S.B.  
N.B.



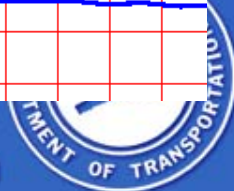
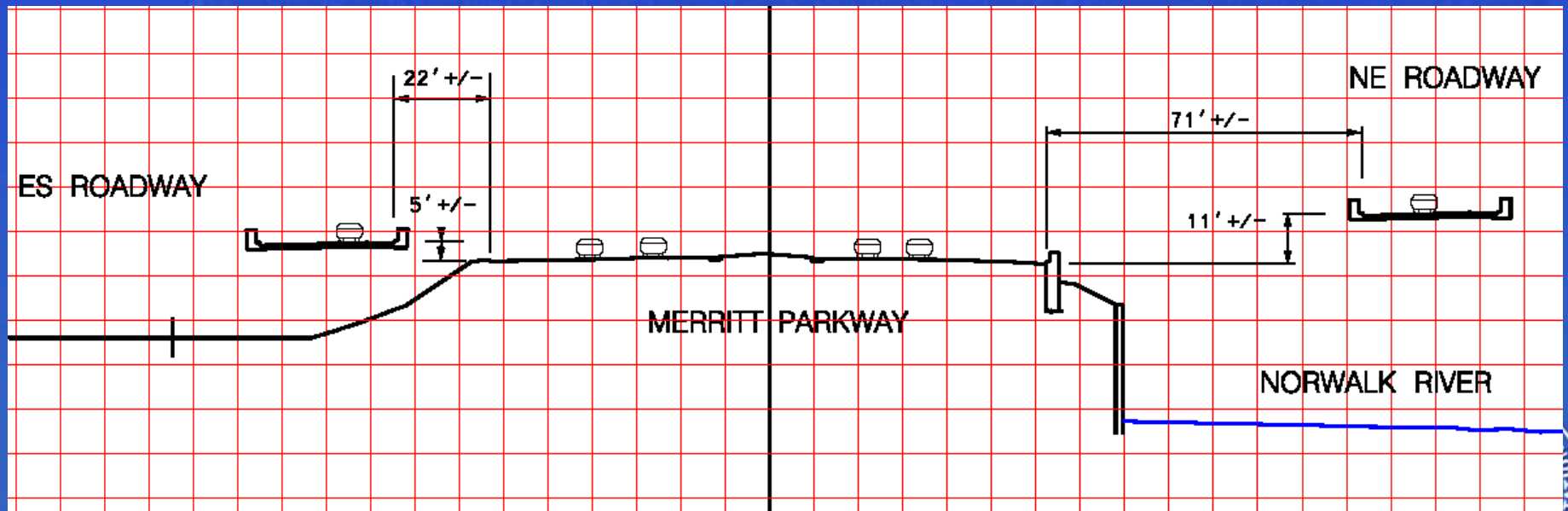
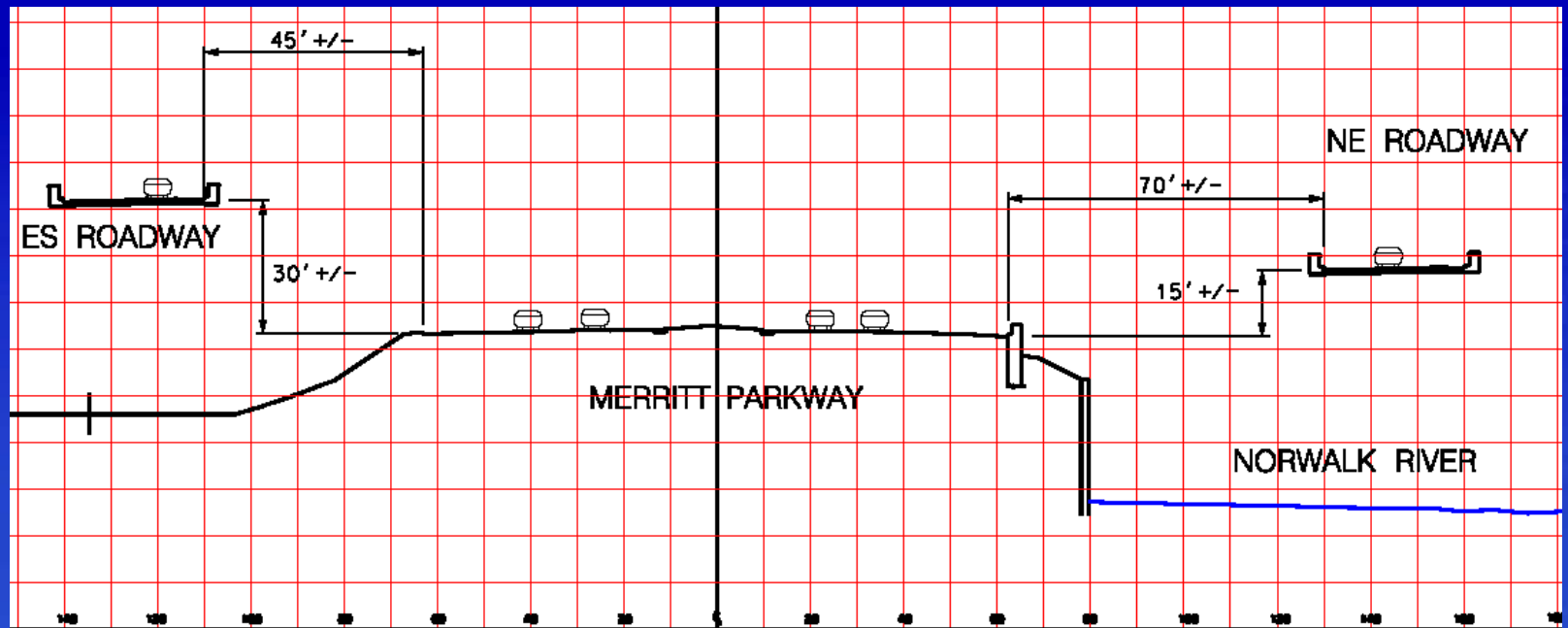


## Original Design

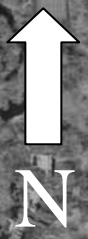


## Alt. 12A - Lowered Ramps





# Modified Cloverleaf w/ Option D2



7

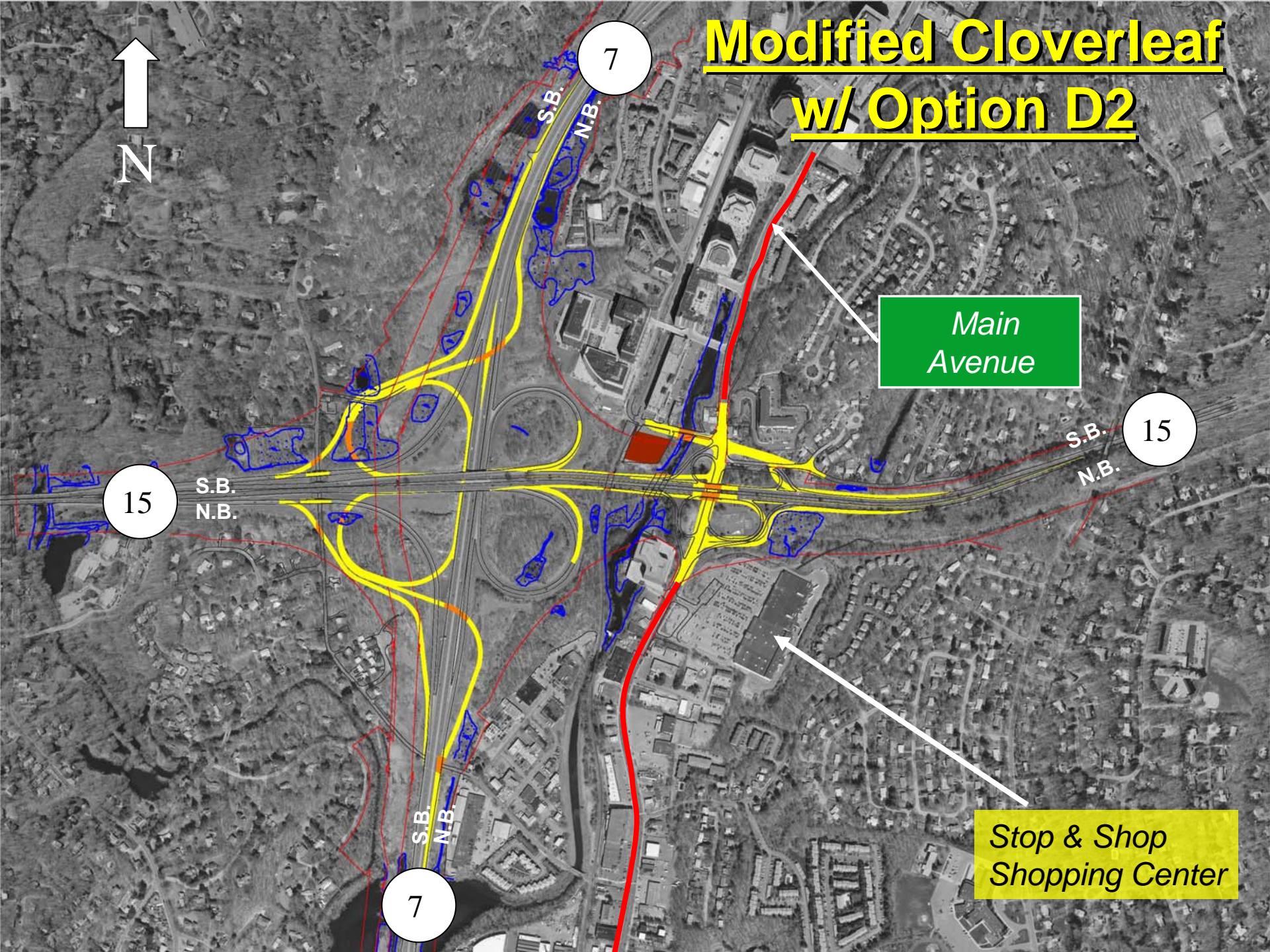
15

15

7

Main Avenue

Stop & Shop Shopping Center

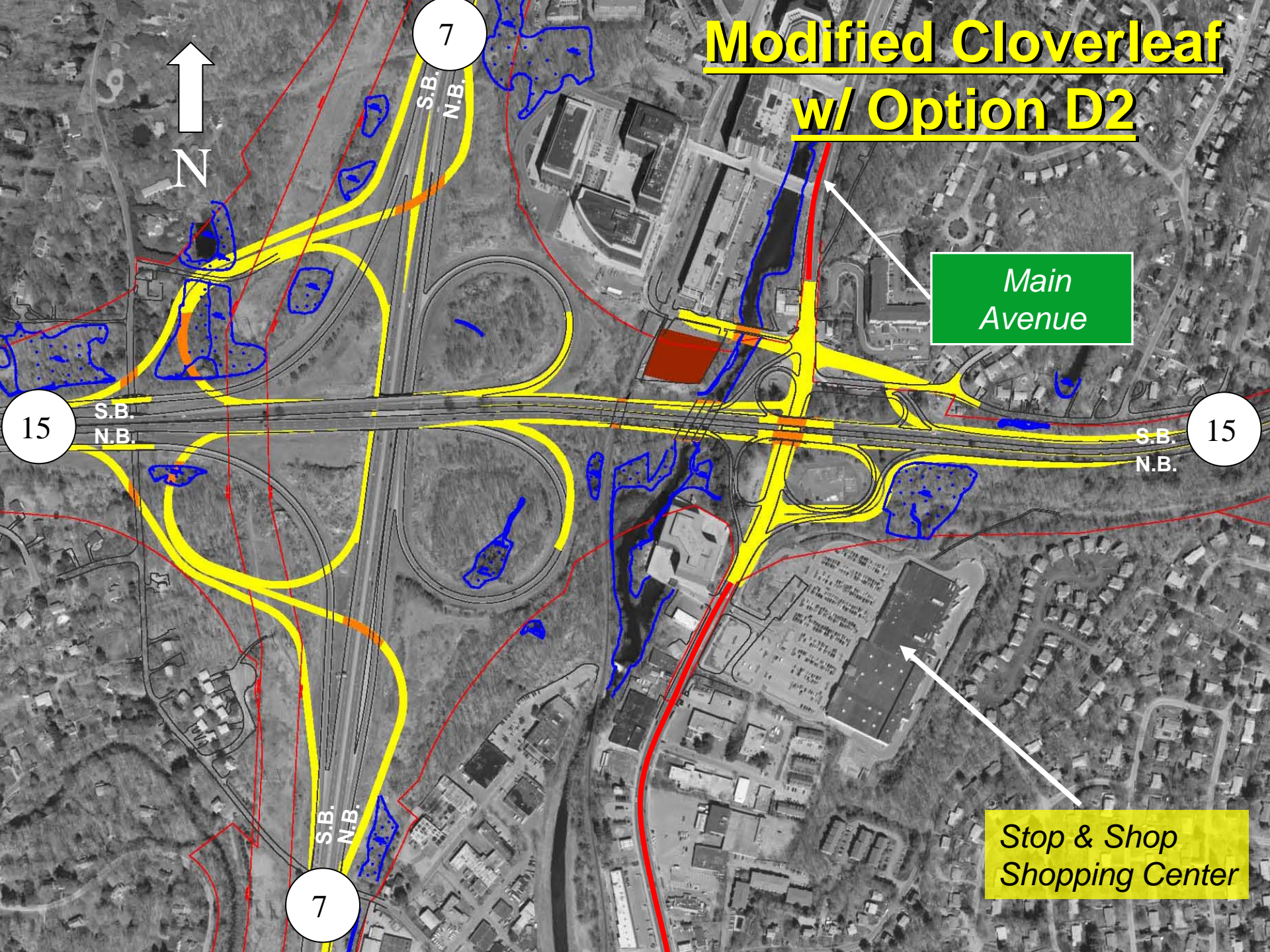


# Modified Cloverleaf w/ Option D2



Main Avenue

Stop & Shop Shopping Center



7

15

15

7

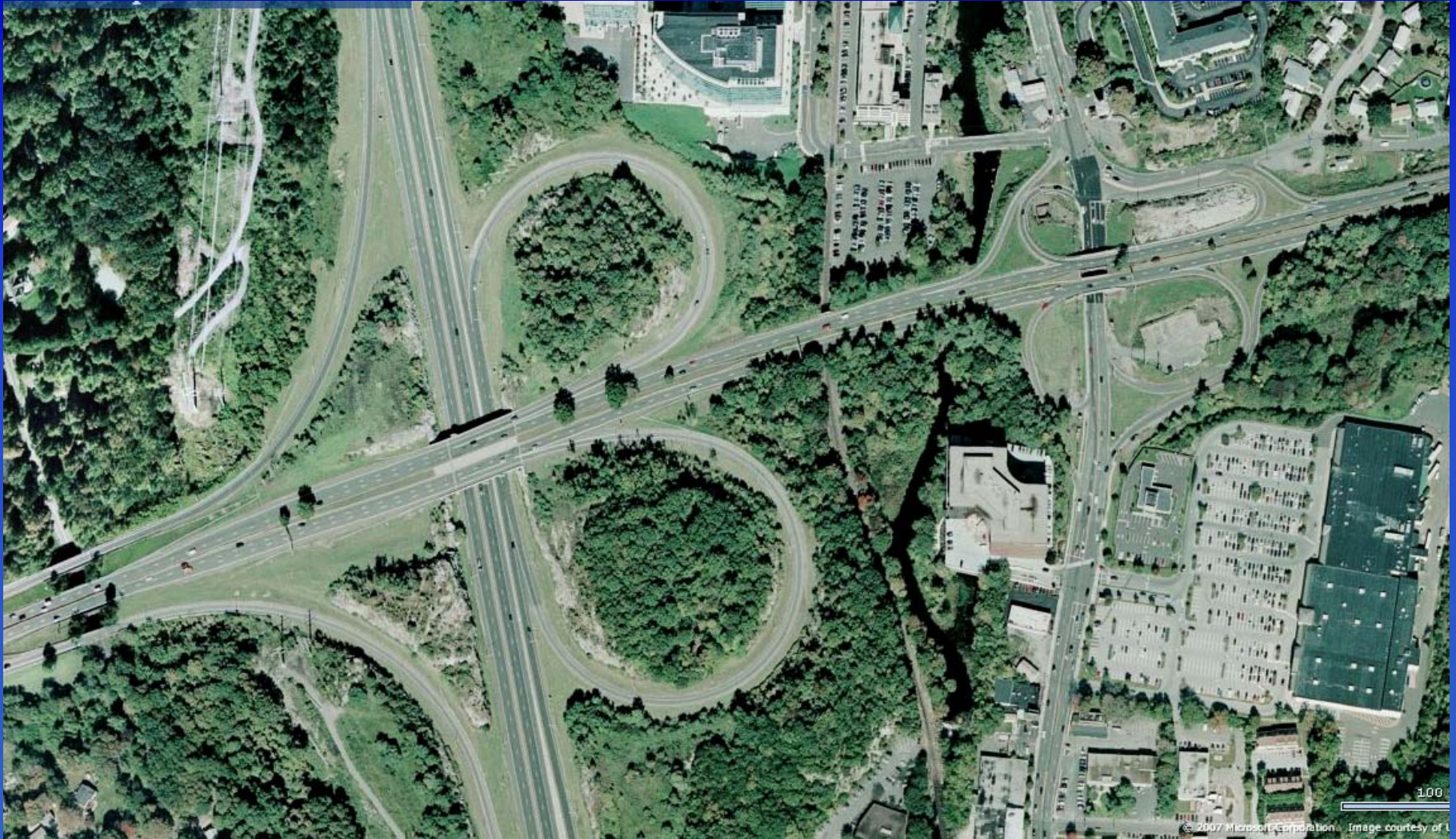
S.B.  
N.B.

S.B.  
N.B.

S.B.  
N.B.

S.B.  
N.B.

# Existing Site



# Other Cloverleaves I-91/Rt. 190 - Enfield



# I-95/Milford Connector



# I-95/Milford Connector





# I-395/Rts. 2 & 32 - Norwich



# I-95/Rt. 1 - Milford



# Comparison of Primary Alternatives

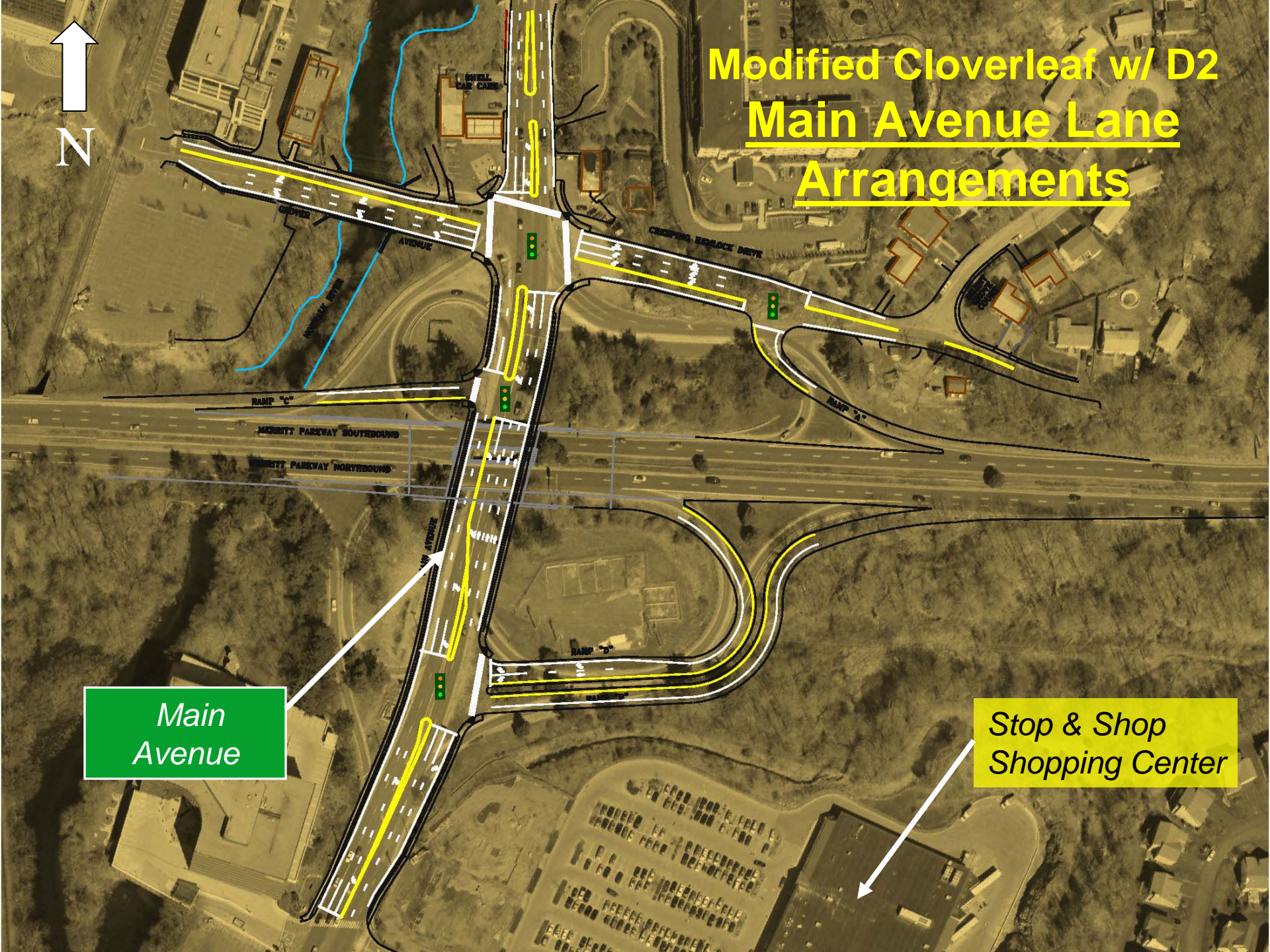
	Cost escalated to 2012 (million)	Wetlands Impacts (acres)	Historic Bridges Affected	Indirect Parkway Impacts (visual)
<b>Original Project *</b>	<b>\$139-175</b>	<b>0.60</b>	<b>4</b>	<b>-</b>
<b>Alt. 12A</b>	<b>\$134-169</b>	<b>0.40</b>	<b>4</b>	<b>Less</b>
<b>Modified Cloverleaf w/ D2</b>	<b>\$98-124</b>	<b>1.25</b>	<b>4</b>	<b>Least</b>

\*original cost ~ \$109 million





# Modified Cloverleaf w/ D2 Main Avenue Lane Arrangements



Main Avenue

Stop & Shop Shopping Center

## Opportunities for Public Input

- **Tonight's Meeting**
- **“Notice of Scoping” – Written comments accepted until the close of business on *March 31, 2008***
- **Further Public Involvement After Determination of Preferred Alternative**



## **Opportunities for Public Input (cont'd)**

- **FOI - Public Access to technical and policy information**
- **For additional information anytime, Contact ConnDOT as shown on handout**



## Next Steps / Time Frame

- **Environmental Document Phase**  
*Spring 2008 thru Fall 2009*
- **Next Public Meeting**  
*Fall 2008 thru Fall 2009*
- **Engineering of Selected Design**  
*Spring 2008 thru Fall 2011*
- **Environmental Permits**  
*Fall 2009 thru Fall 2011*
- **Construction**  
*2012 thru 2014*



# **Contact Information**

**Written Comments should be sent to:**

**Mr. Thomas A Harley  
Manager of Consultant Design  
Department of Transportation  
P.O. Box 317546  
Newington, CT 06131-7546**

**FAX: 860-594-3373  
email: [thomas.harley@po.state.ct.us](mailto:thomas.harley@po.state.ct.us)**

**Written Comments must be sent / postmarked by:**

**March 31, 2008**

