



STAMFORD STATION PARKING GARAGE

Public Open House



STATE PROJECT NO. 0301-0047
April 17, 2019



Project Overview



Proposed Improvements

- A** New Parking Garage
- B** Pedestrian Bridge

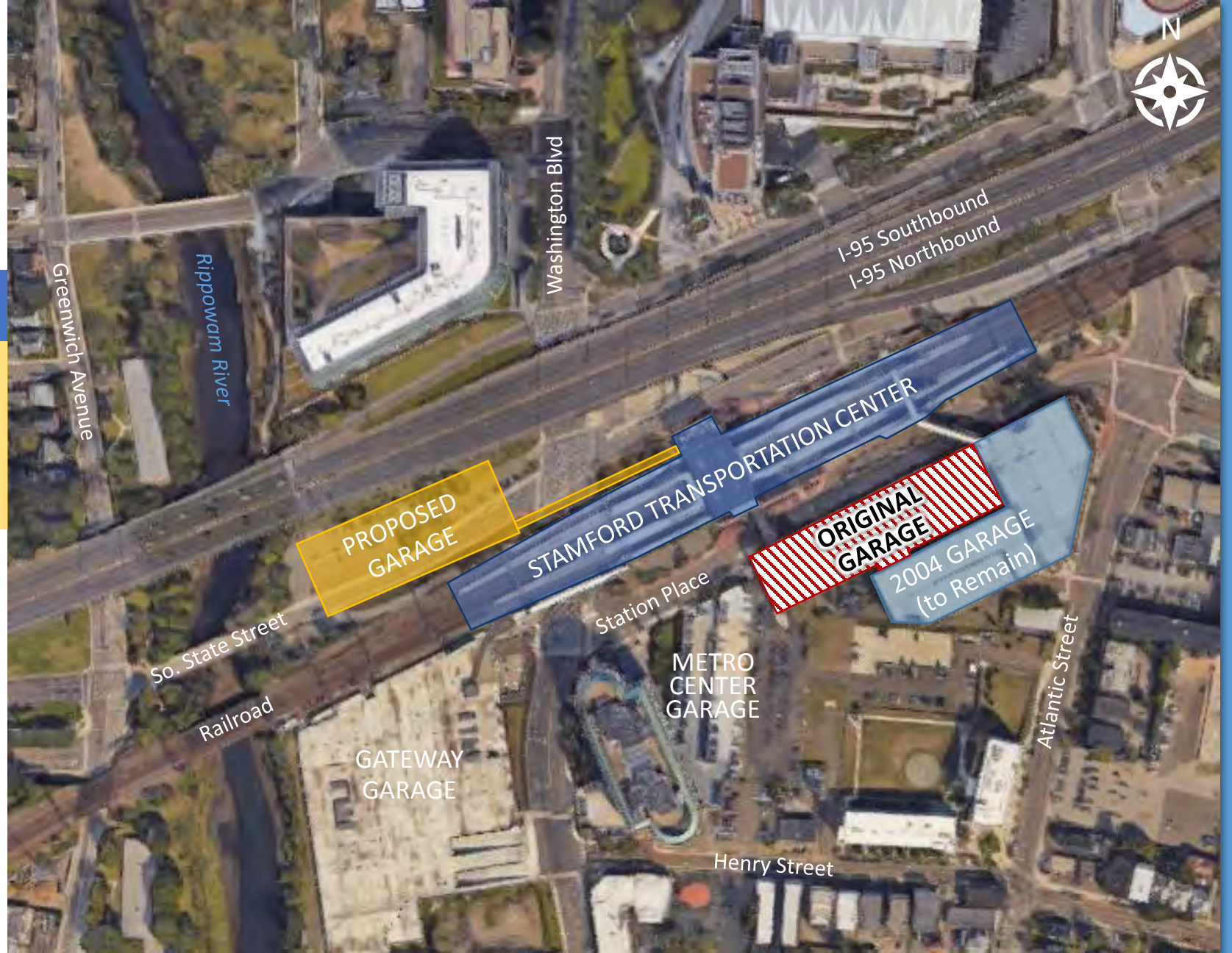
**Project does not include transit oriented development (TOD) or private investment.*

Map Source: Google



Separate Projects

- Original Garage Demolition
- Other potential station-area improvements



Map Source: Google

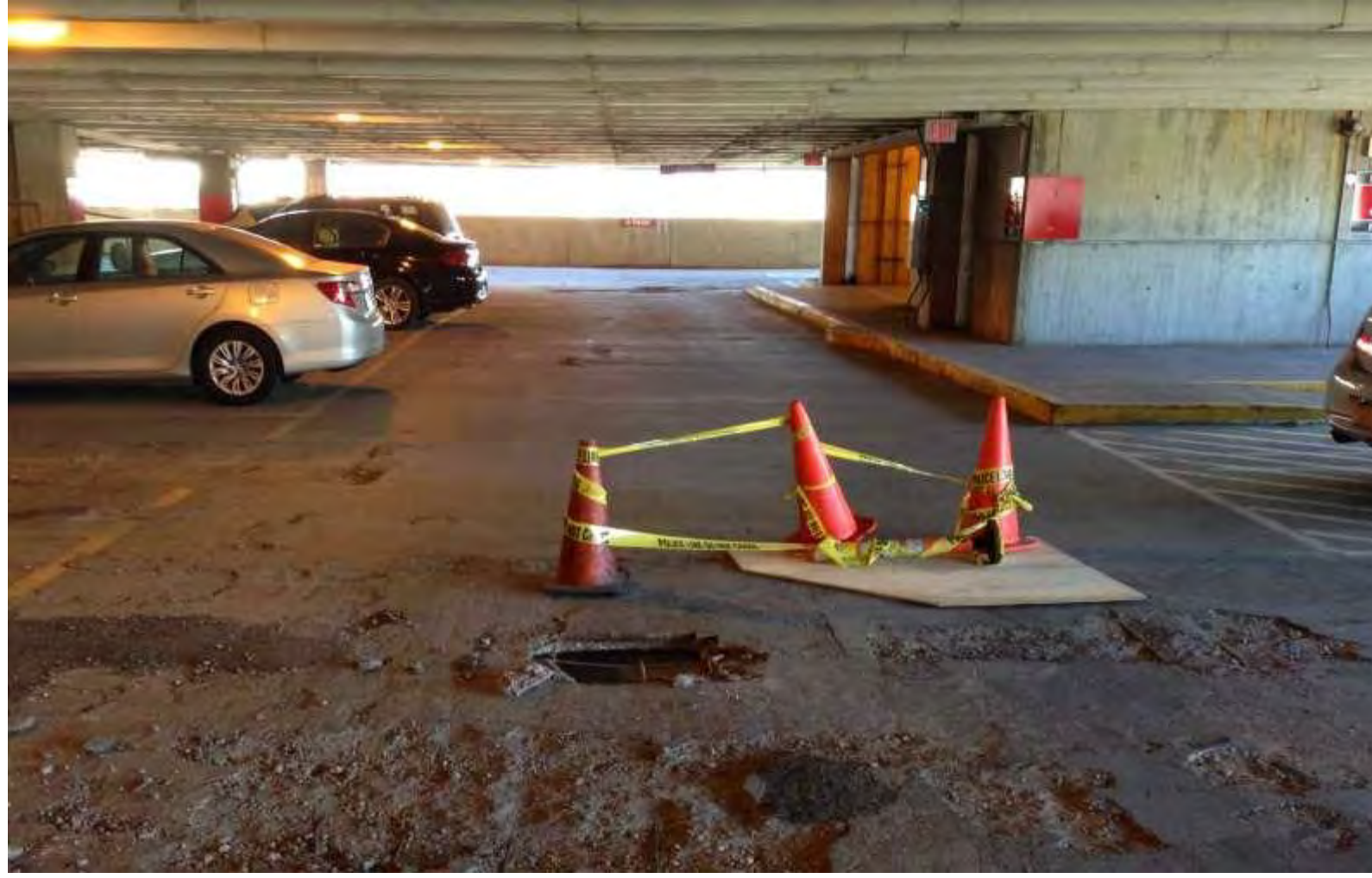


Separate Projects

STAMFORD

STATION PARKING GARAGE

Project Purpose



- Replace the aging Original Garage structure
- Provide new low maintenance, **long service life** facility
- Meet demand for commuter parking spaces at the STC

PROJECT PURPOSE & NEED

Needs for the Project

- Address the poor condition & continued degradation of the Original Garage
- Meet expectations for availability, accessibility & convenience of parking at the STC
- Expand State-owned & maintained parking supply
- Minimize, manage commuter disruption & commuter parking during construction of the proposed facility

STC PARKING ASSESSMENT

GARAGE/LOT	TOTAL SPACES (IN 2022)
Surface Lot - South State Street	0
Original Garage	0
2004 Garage	1200
Proposed Garage - South State Street	960
Gateway Garage	0
Metro Center Garage	615
Metro Green Garage	302
TOTAL	3077
EXISTING PARKING DEMAND	2952

STC Parking Supply



Garage/Lot	Existing Demand (Spaces)		
	Total Demand	% Occupied	% Commuter
Surface Lot	54	58%	100%
Original & 2004 Garages	1220	87%	100%
Gateway Garage	1123	70%	100%
Metro Center Garage	362	59%	20%
Metro Green Garage	193	64%	40%
TOTAL	2952	73%	86%

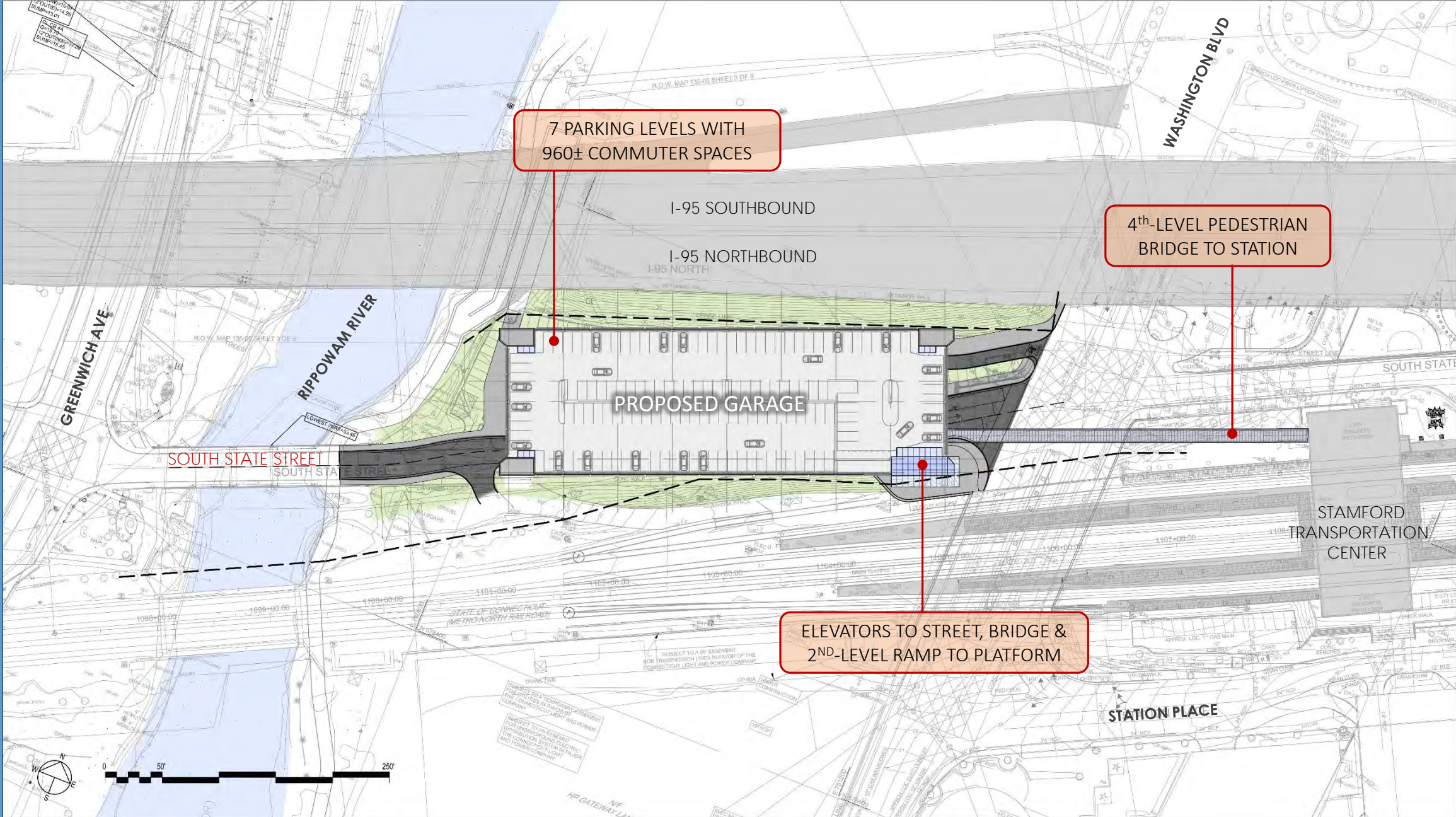
STC Parking Demand





Garage Program & Functional Plan



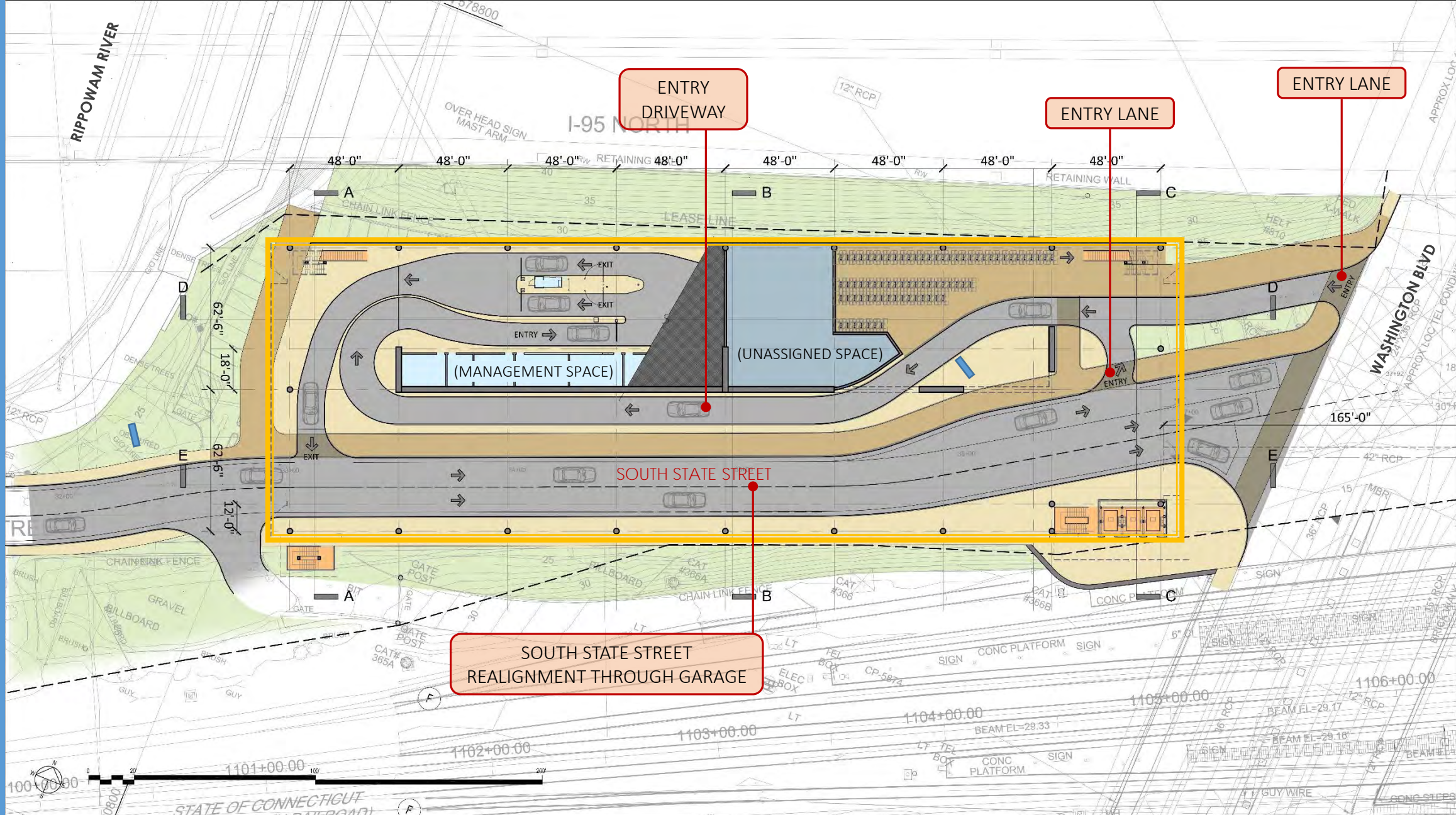


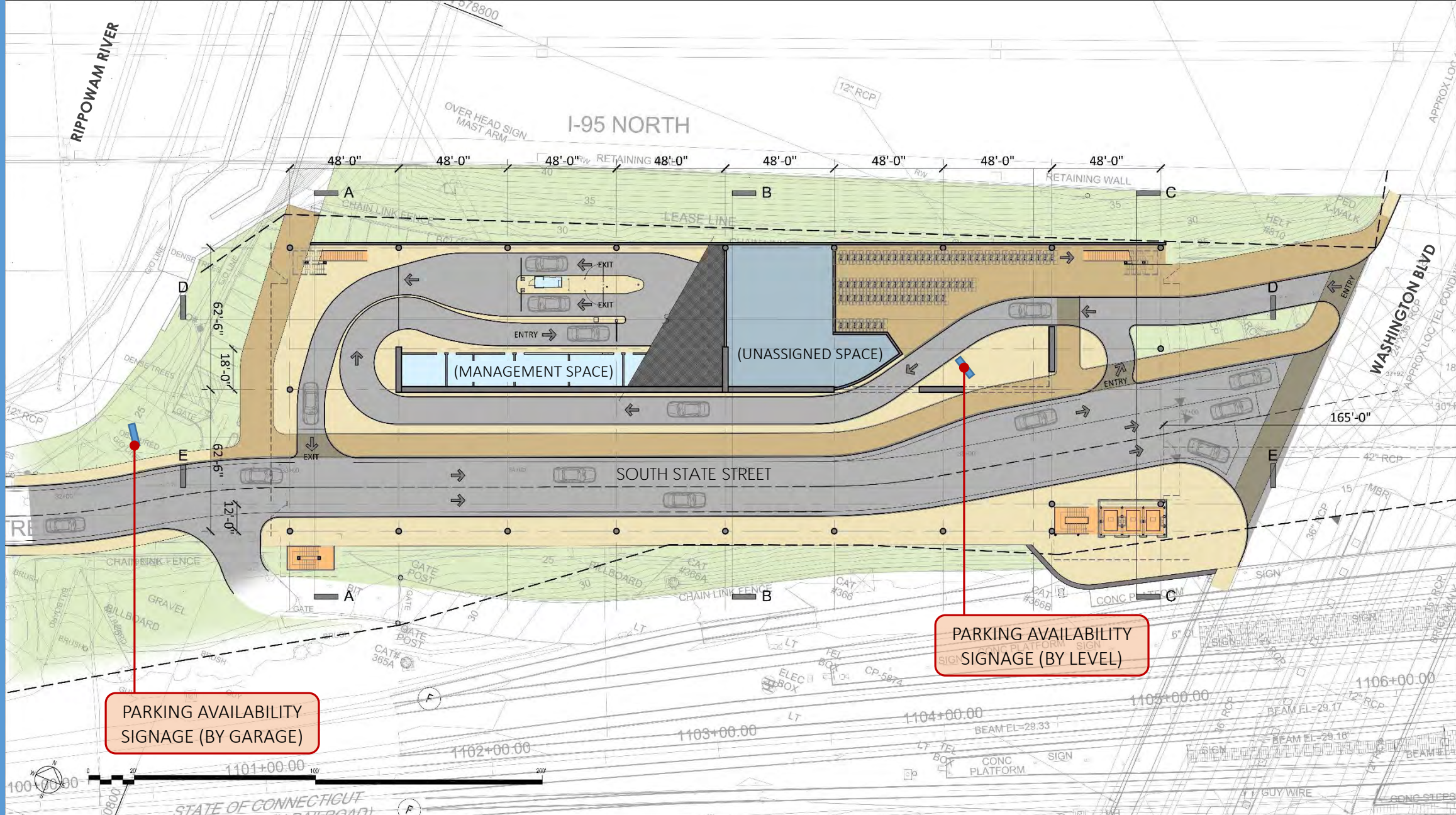
7 PARKING LEVELS WITH
960± COMMUTER SPACES

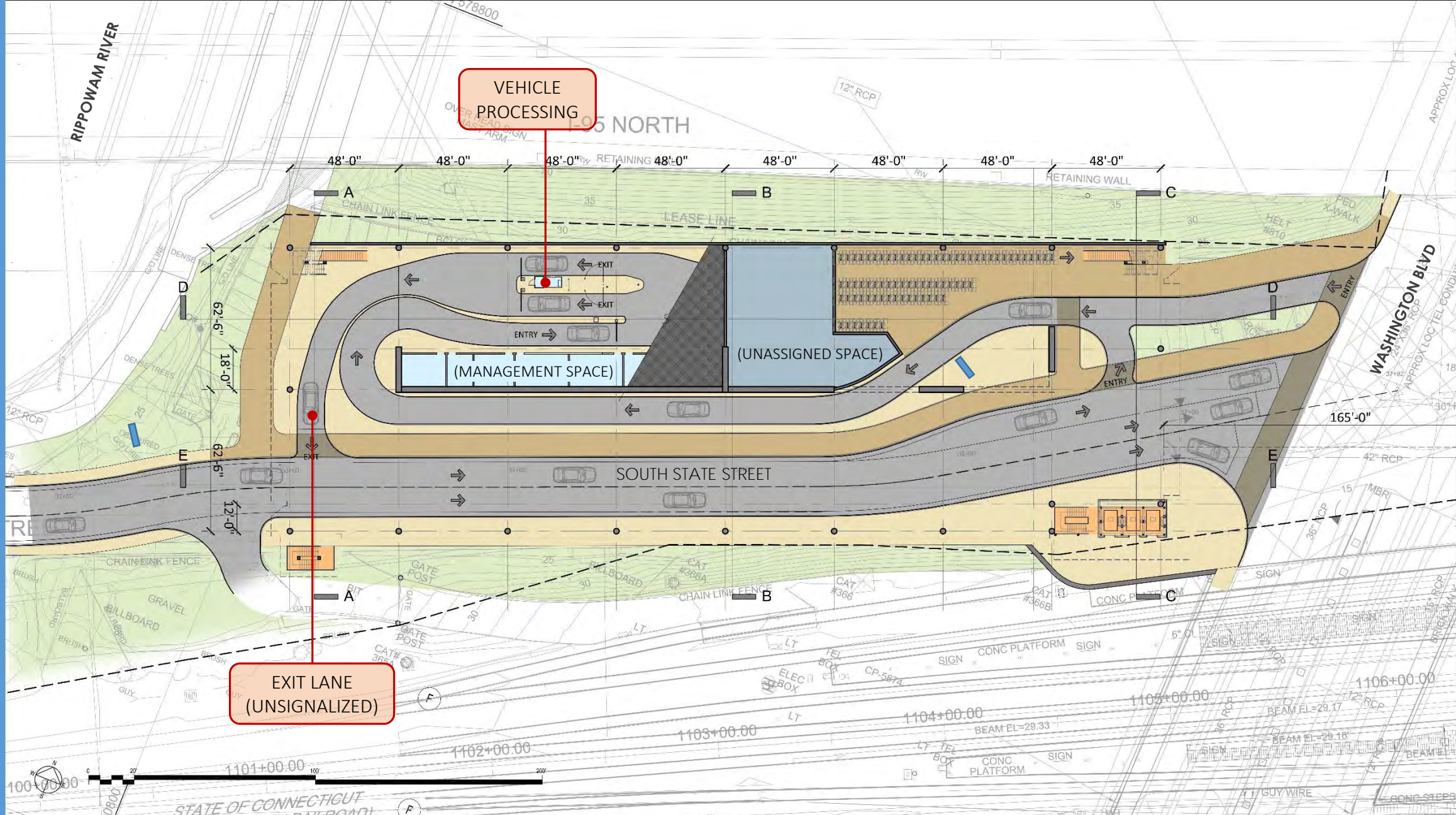
4th-LEVEL PEDESTRIAN
BRIDGE TO STATION

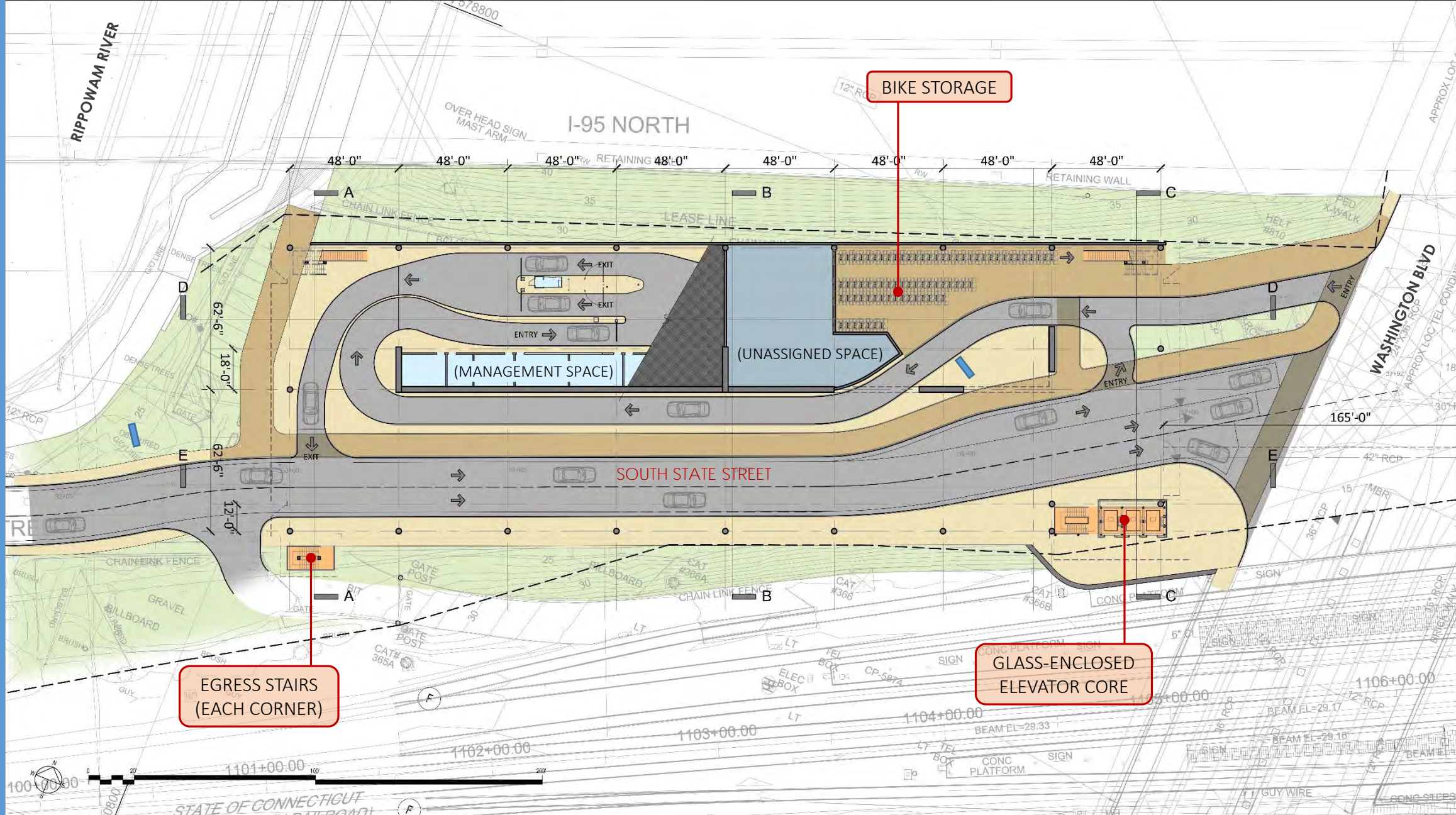
ELEVATORS TO STREET, BRIDGE &
2ND-LEVEL RAMP TO PLATFORM











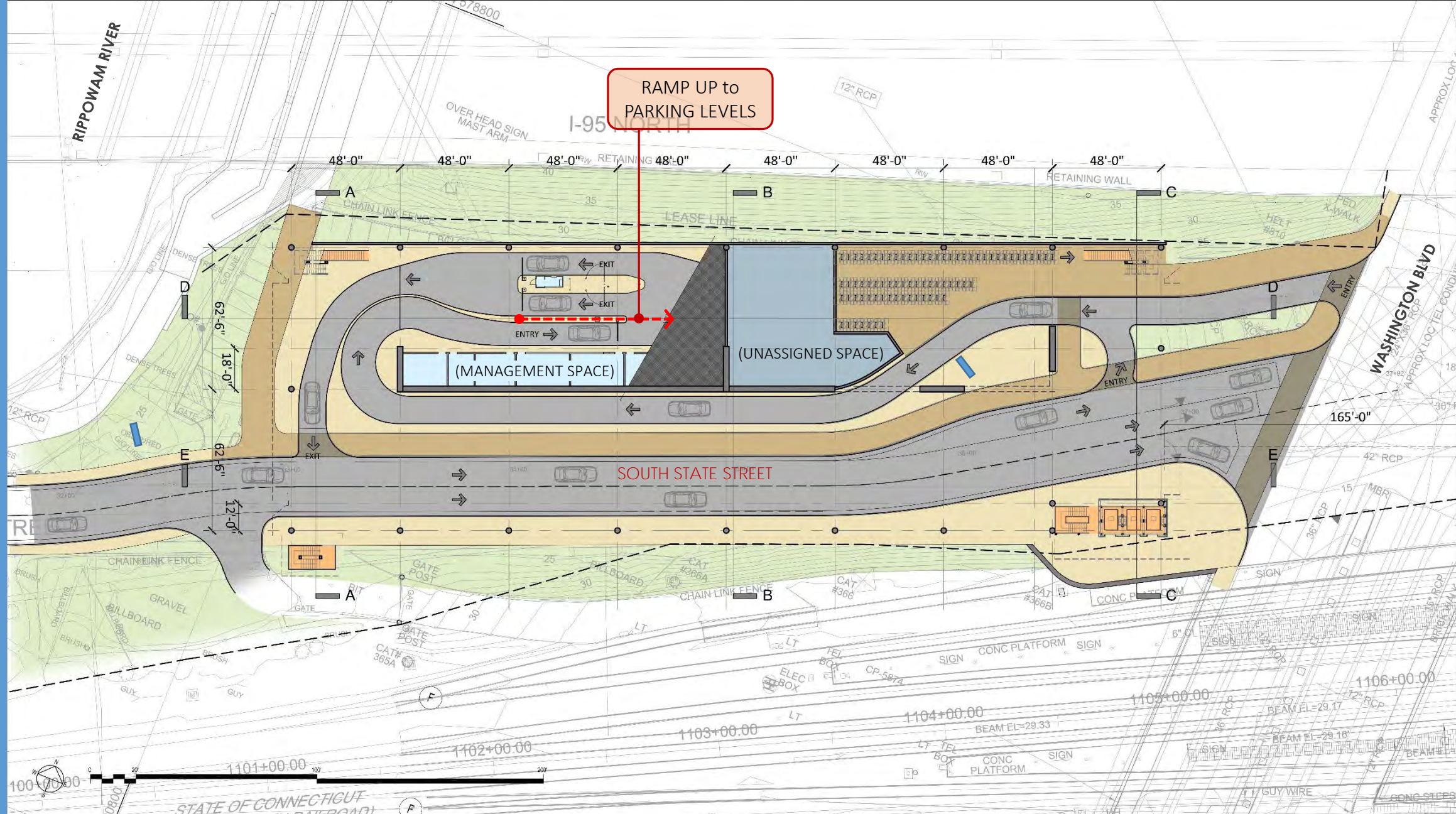
BIKE STORAGE

EGRESS STAIRS (EACH CORNER)

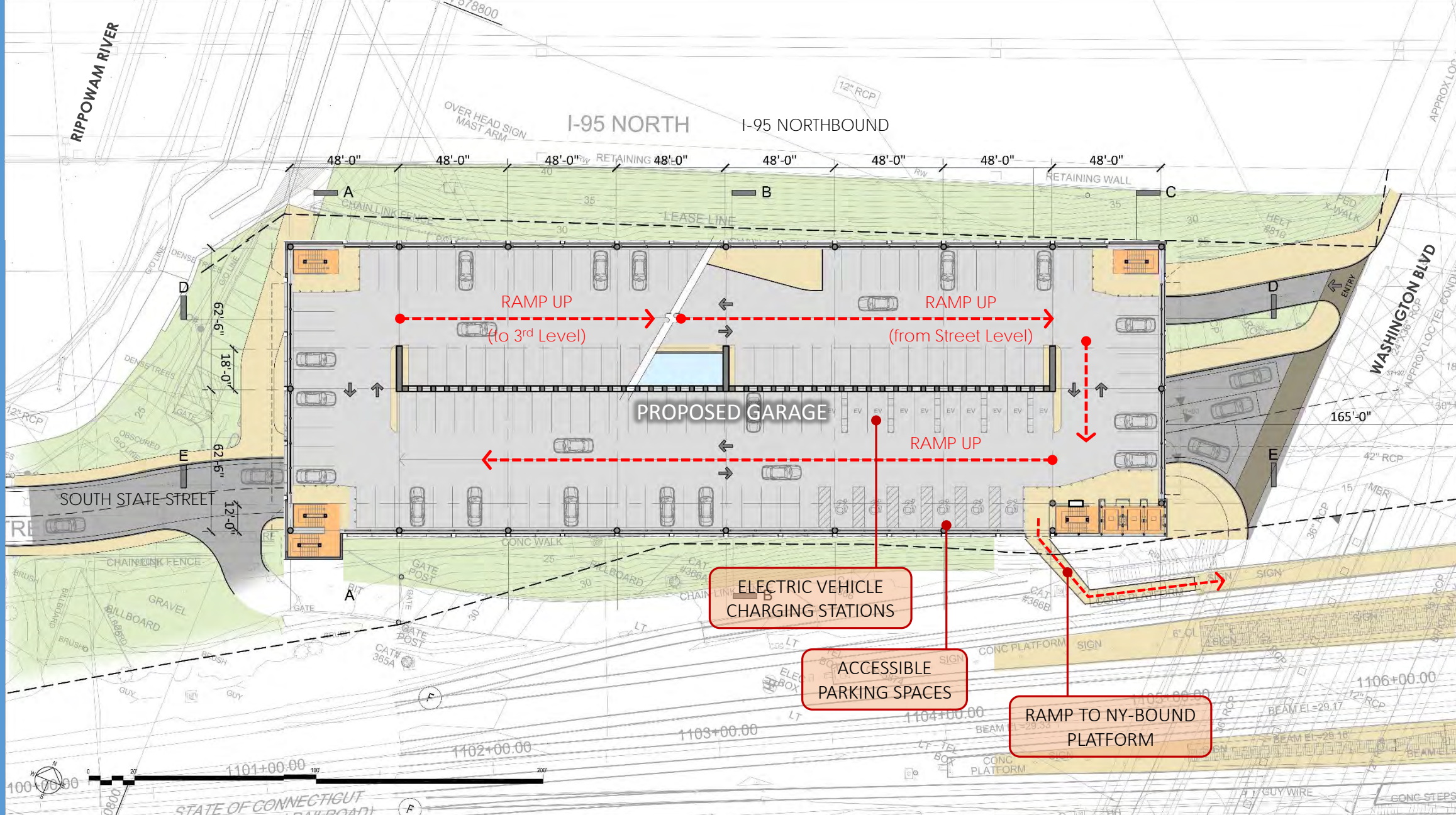
GLASS-ENCLOSED ELEVATOR CORE

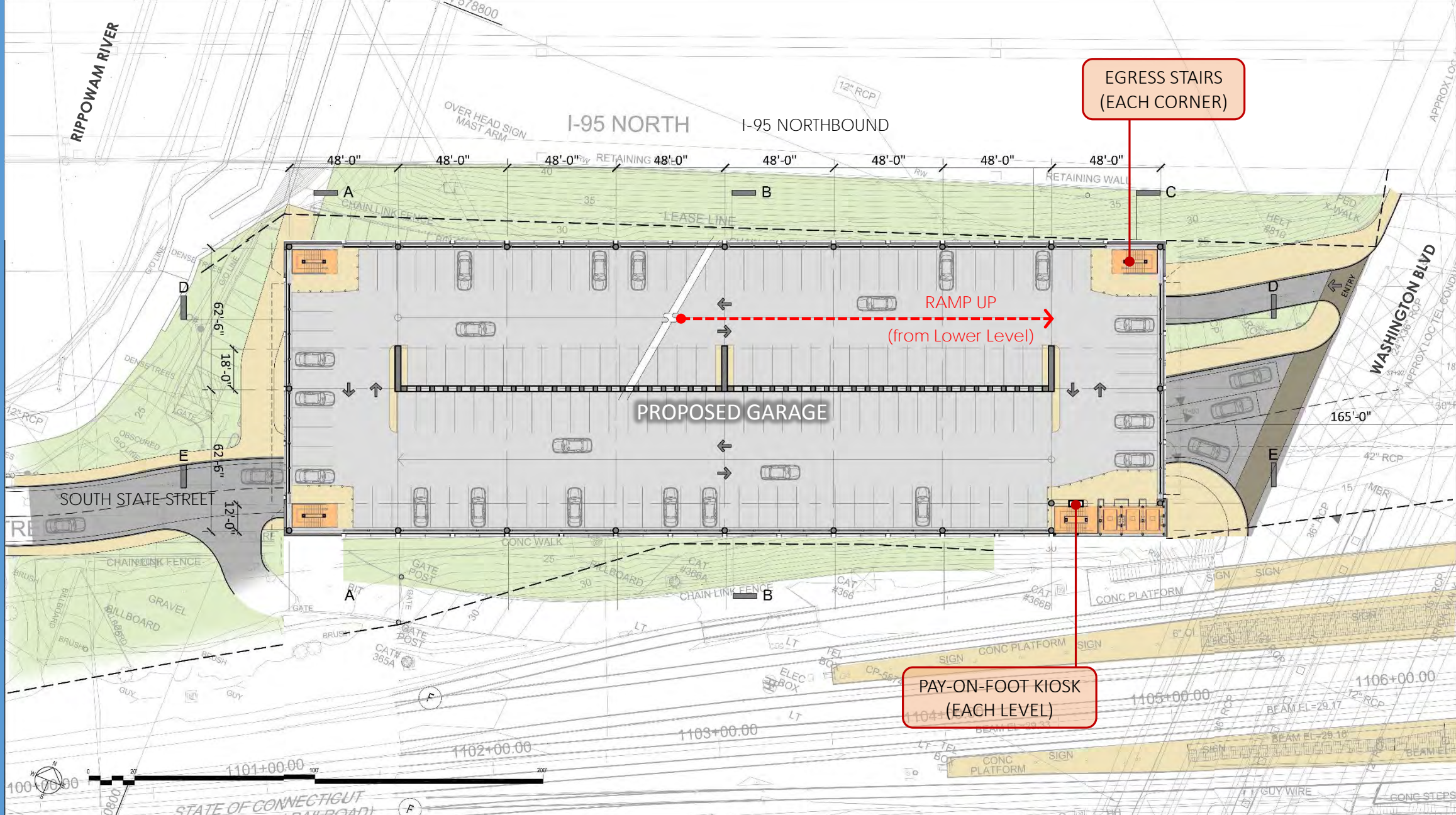


RAMP UP to
PARKING LEVELS



Street Level Plan





EGRESS STAIRS
(EACH CORNER)

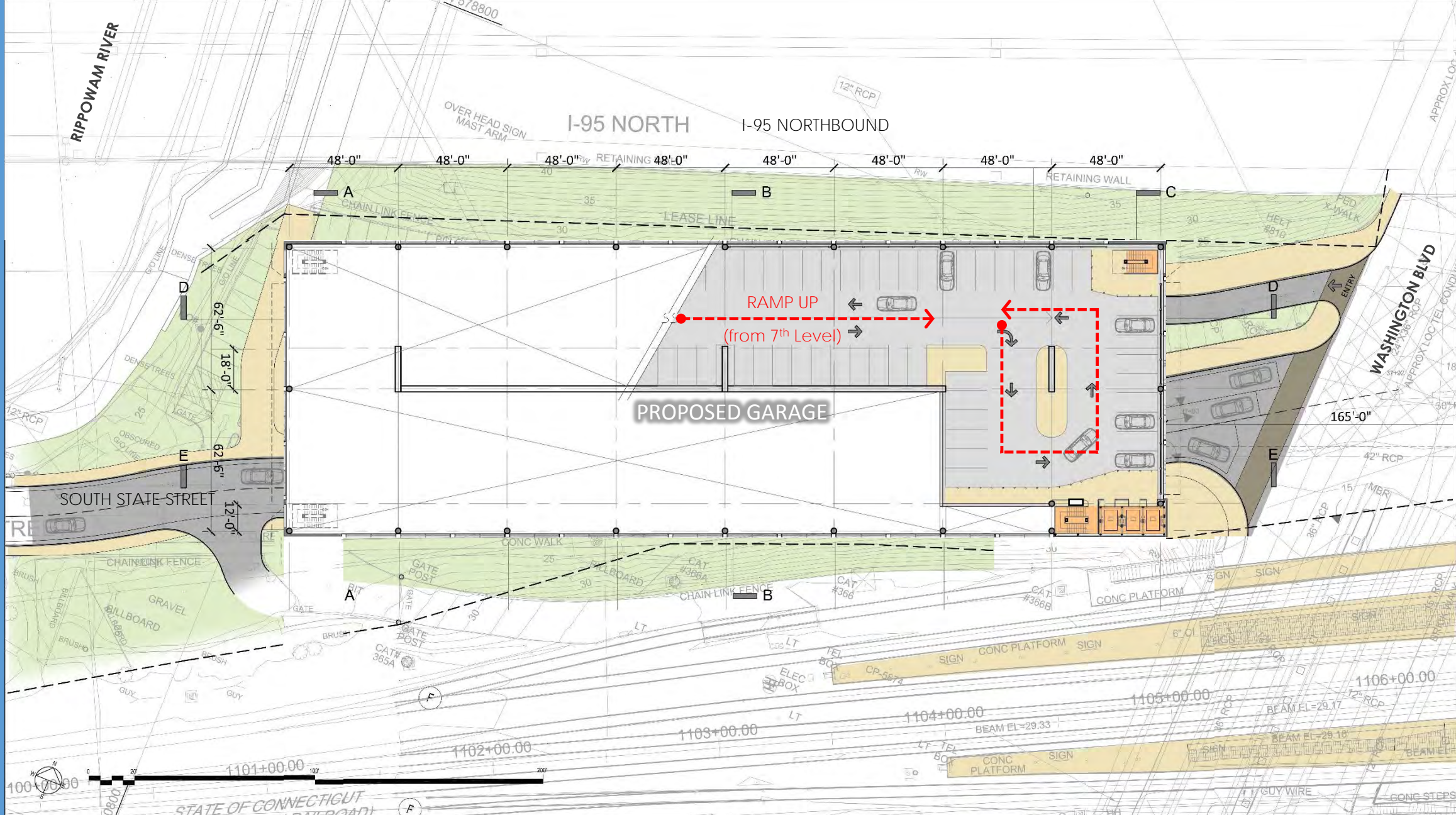
PAY-ON-FOOT KIOSK
(EACH LEVEL)

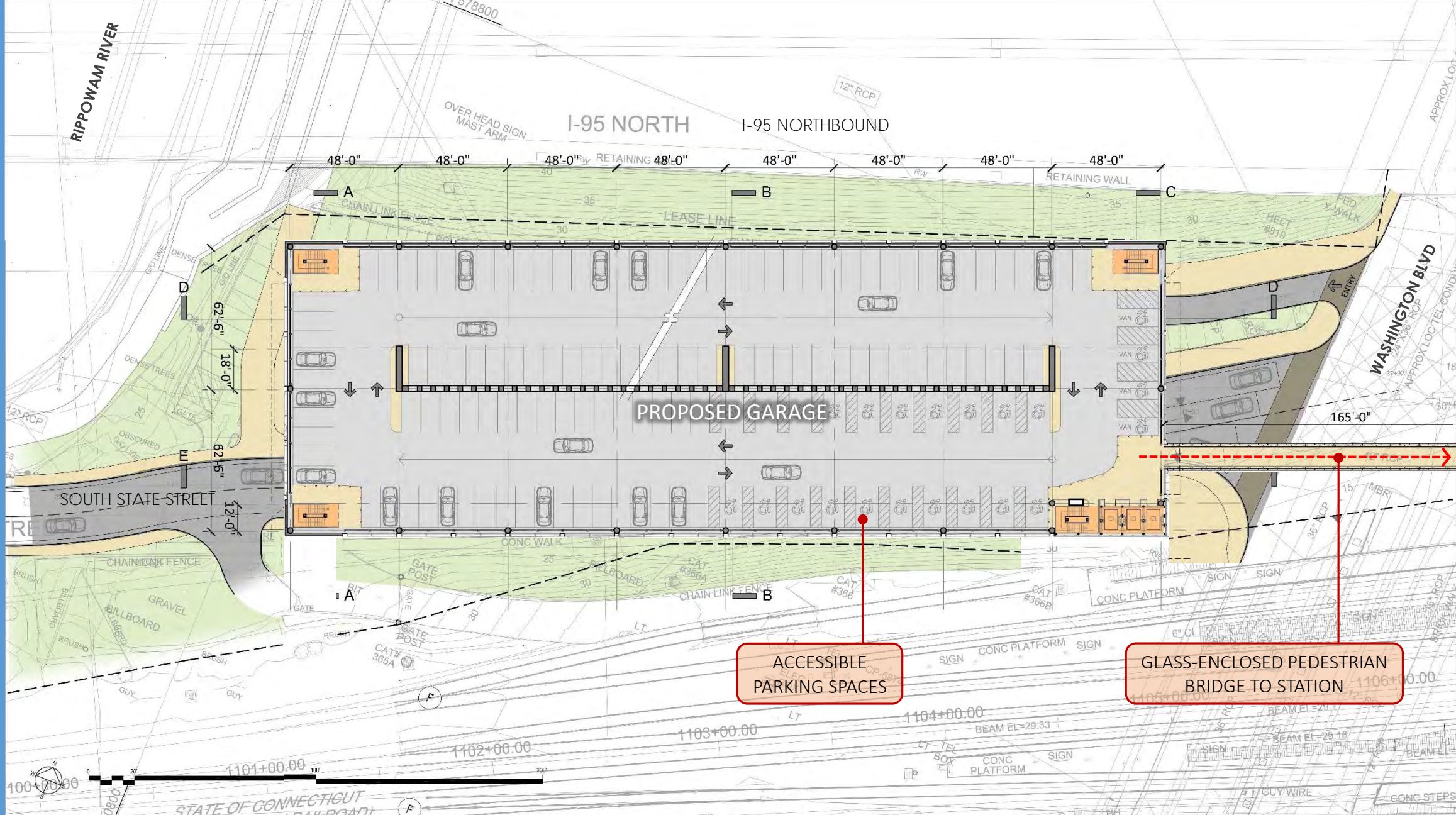


3rd, 5th, 6th, and 7th Level Plans



Interior View of Stair Enclosure





ACCESSIBLE
PARKING SPACES

GLASS-ENCLOSED PEDESTRIAN
BRIDGE TO STATION





PEDESTRIAN BRIDGE
ENTRY PORTAL

ELEVATOR CORE

PAY-ON-FOOT KIOSK
(EACH LEVEL)

REAL-TIME TRAIN
INFORMATION DISPLAY



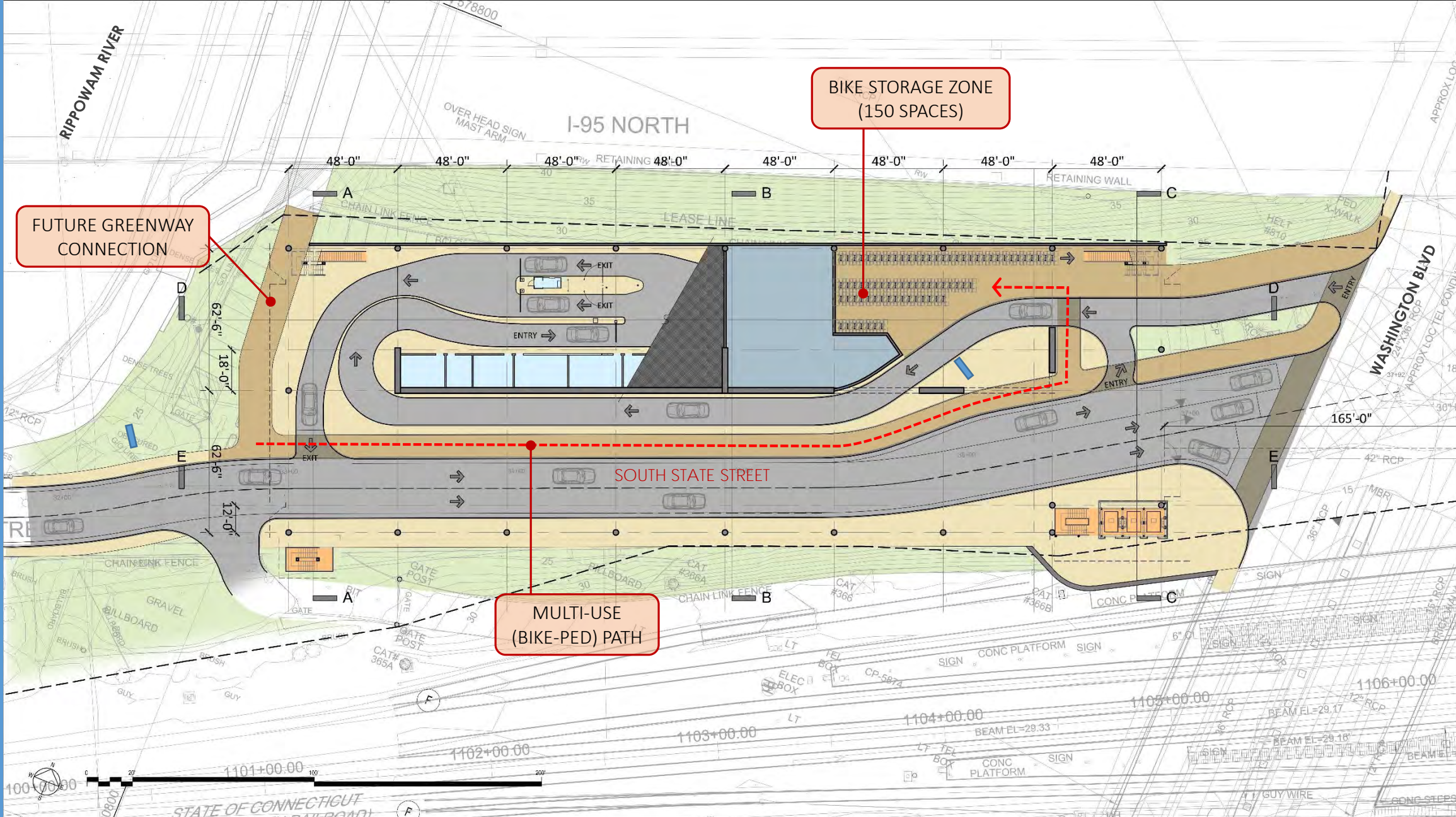
Bridge Entry Portal & Elevator Core



TIME	DESTINATION	TK	ETA
1:10	BOSTON S. STA	2	2:40
2:40	BOSTON S. STA	3	3:10
2:50	NELI CANANN	2	3:40



Pedestrian Bridge



FUTURE GREENWAY CONNECTION

BIKE STORAGE ZONE (150 SPACES)

MULTI-USE (BIKE-PED) PATH





Street Level View through Garage

An aerial photograph of a city street scene. A multi-lane highway runs diagonally across the frame. To the left of the highway is a large, modern building with a curved facade. To the right is another large building with a curved facade and a parking lot. The image is overlaid with a blue banner containing the text "Aesthetic Design | October 2018".

Aesthetic Design | October 2018





October 2018 Concept



October 2018 Concept



October 2018 Concept



October 2018 Concept



Aesthetic Design | April 2019





Current Design – View from I-95 Southbound



Current Design – View from I-95 Southbound



Current Design – View from I-95 Southbound



Current Design – View from I-95 Northbound



Current Design – View from I-95 Northbound



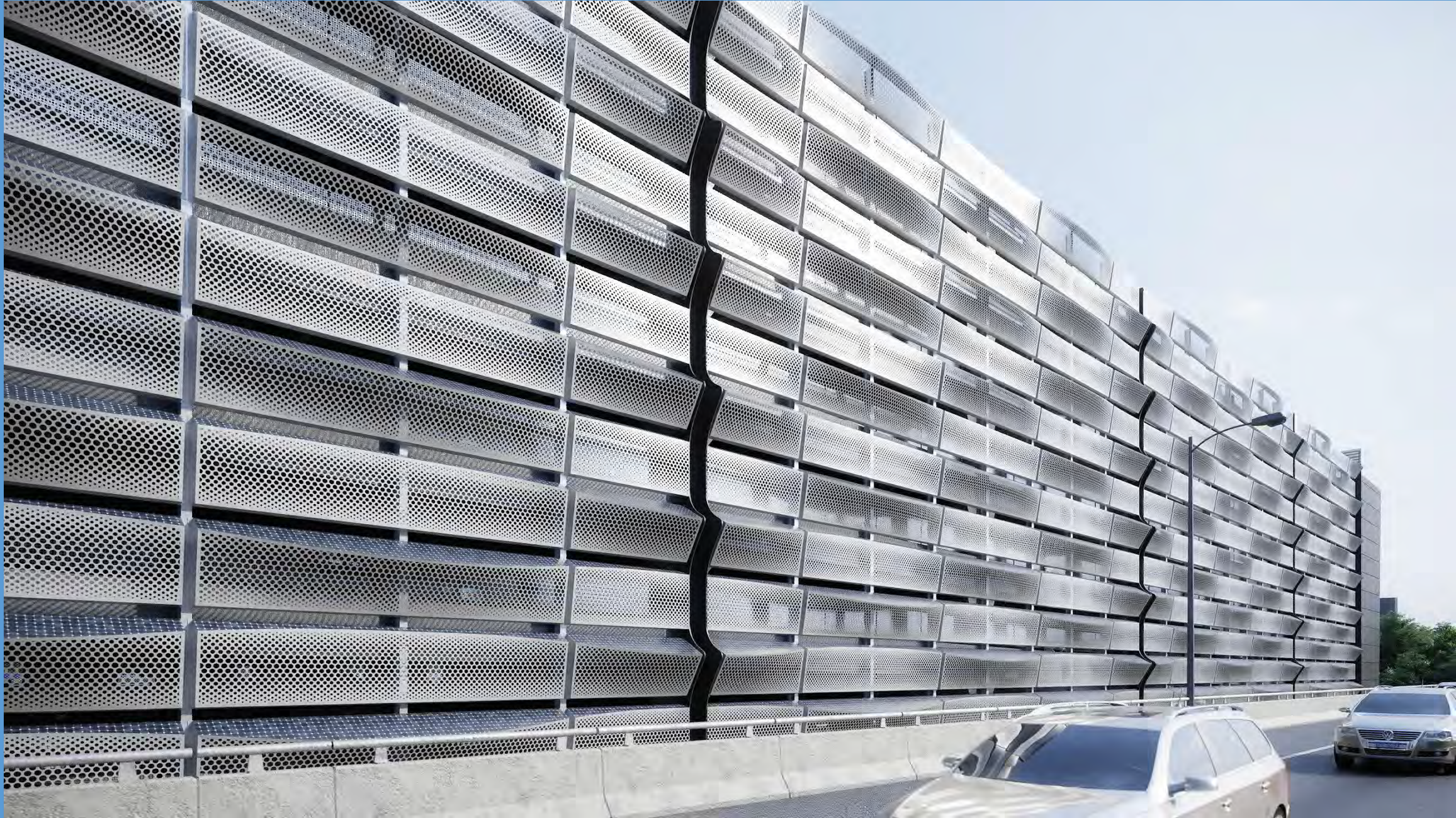
Current Design – West Elevation



Current Design – View from Washington Blvd



Current Design – View from Station Place



Current Design – Close Up View



Schedule



Milestone Schedule

- ➔ **ISSUE DESIGN-BUILD RFP**
2019
- ➔ **SELECT DESIGN-BUILD TEAM**
SPRING 2020
- ➔ **START CONSTRUCTION**
SUMMER 2020
- ➔ **OPEN GARAGE**
SUMMER 2022



For Project Inquiries & Information

Scott Anderson

CTDOT Facilities Design Unit

Scott.T.Anderson@ct.gov

(860) 594-3301

or

Navigate to **MAJOR PROJECTS WEBLINKS** at www.ct.gov/DOT

