

LINE BOUND # 51

REGULATION GRANITE MONUMENT

WOOD ROAD

From the Intersection of Union Road, South Wales Road and a woods road in the Town of Holland, proceed southerly 0.2 miles on wood road to bound. After crossing a brook the road ascends southerly, levels off and runs straight, curving to the east opposite the bound.

Bound is located 22 feet west of the center of the traveled way and 6 feet above the road. Land rises steeply to the west, north and south of the line. East of the road a narrow strip of land drops off to swampy land.

Bound is marked by a regulation granite monument showing 3.9 feet above the ground. The top is 1' x 1' with a 3/4" X 1 3/4" drill hole in the center. It is lettered "1906" on the east face, "H MASS" on the north face and "U CONN" on the south face. There is a chip in the northeast top corner. It is 10.1 feet long, set in excavation made in sandy gravel. Monument was set May 28, 1907.

1906 Station 107554
Bound #50 - 1,949 feet east
Bound #52 - 6,325 feet west



Looking Northerly



Looking Northerly

LINE BOUND #52

HOLLAND - WALES TOWN CORNER

REGULATION GRANITE MONUMENT

PAVED HIGHWAY

From the Intersection of Stafford Road and Union Road, southeast of Lake George in the Town of Wales, proceed southeasterly on Union Road to bound at 0.7 miles. Highway ascends southeasterly and curves to the south about 200 feet north of the line and crests about 100 feet south of the bound.

Bound is located 23 feet east of the center of the traveled way and 43 feet east of the center of the west highway wall in Connecticut which ends at and runs west along the line between level land on the south and land dropping away to the north. It is 50 feet south of the south end of the east highway wall in Massachusetts. It is 40 feet southwest of a one story house owned now or formerly by James M. Kimball. There is level land to the south.

Bound is marked by a regulation granite monument showing 3.9 feet above the ground. The top is 1' x 1' with a 1/2" x 2" drill hole in the center. It is lettered "W 1906" on the west face, "H" on the east face, "MASS" on the north face, and "U CONN" on the south face. It is 9.5 feet long, set in excavation made in sandy loam. Monument was set May 29, 1907.

1906 Station 113879
Bound #51 - 6,325 feet east
Bound #52A -1,320 feet west
Bound #53 - 1,699 feet west

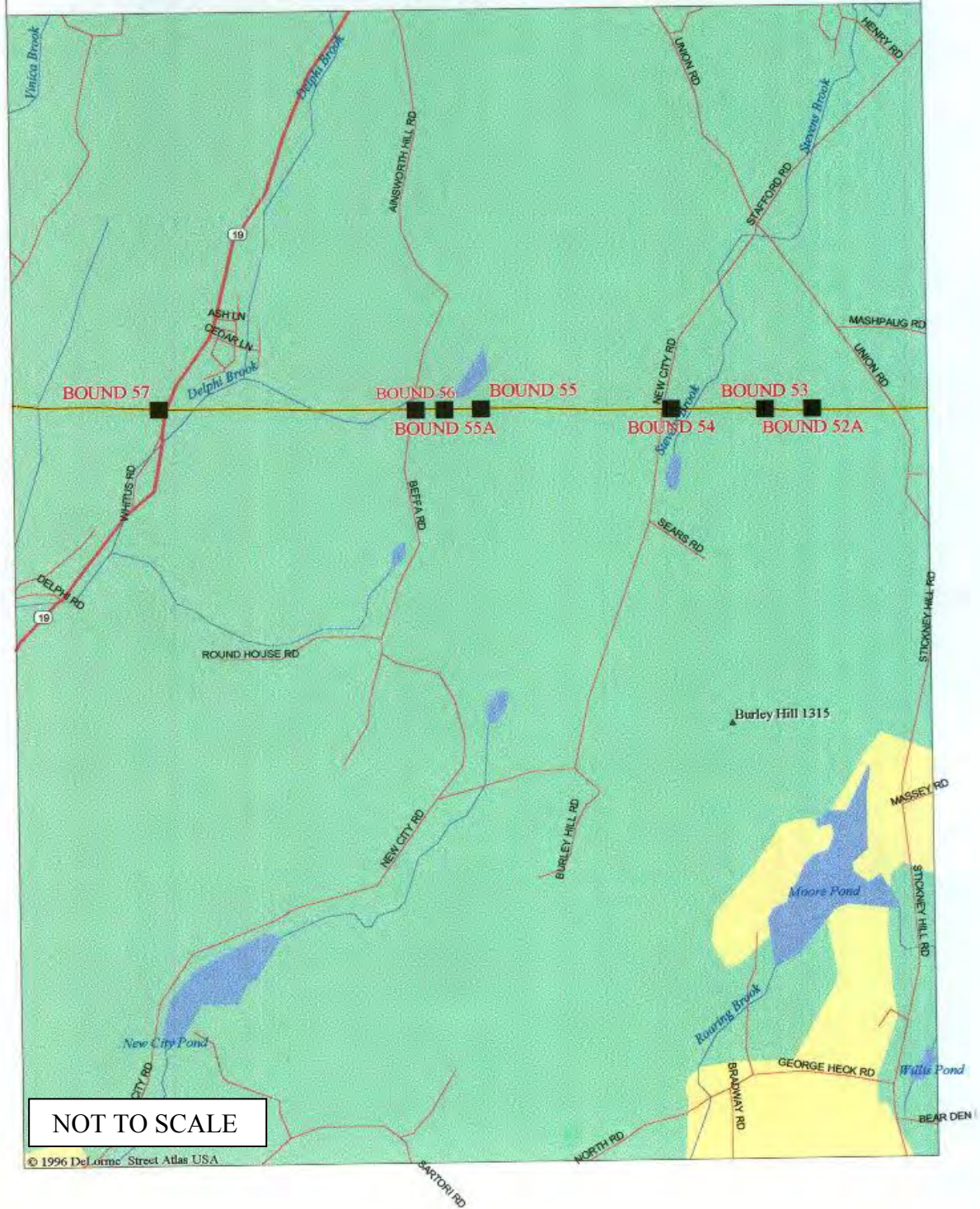


Looking Northeasterly



Looking Northeasterly

CT - MA Line Section - I



LINE BOUND # 52A

DRILL HOLE

INTERIOR LINE SUMMIT

From the State Line on the northerly slope of Burley Hill at Bound #53, proceed easterly on line following line fence, 379 feet to the bound.

Bound is located 5 feet south of the south edge of a meadow. Said bound being due south of a saddle back ridge on the horizon, 140 feet east of a barbed wire fence running north from the line fence. It is in the top of a flat topped boulder showing 2 feet by 2 feet, embedded in the ground with its top about level with the surface. It is 22 feet west of a 5 foot by 3 foot boulder just south of the line fence. With line cleared, it would see Bound #49 to the east and Bound #55 to the west.

Bound is marked by a 1/2 inch drill hole 1 1/2 inches deep, enclosed in a 3 inch square cut in the top of the flat topped boulder, 5 inches south of the north end of the exposed top. It is covered by a small stone heap.

1906 Station 115199
Bound #52 -1,320 feet east
Bound #53 - 379 feet west



Looking Northerly



Looking Northerly

LINE BOUND #53

UNION - STAFFORD TOWN CORNER

REGULATION GRANITE MONUMENT

INTERIOR TOWN CORNER

From the State Line on Union Road at Bound #52, proceed westerly along gravel road 0.2 mile to a meadow. Proceed along south edge of the meadow to its end then follow a barbed wire fence to a fence corner and bound.

Bound is located on the northwesterly spur of a hill at a right angle in a barbed wire fence running east and south, and 250 feet west of a stone pile along barbed wire fence at the end of a meadow.

Bound is marked by a regulation granite monument showing 4.1 feet above the ground. The top is 1' X 1' with a 1/2" x 1 1/2" drill hole in the center. Bound is tipped to the north. It is lettered "U 1906" on the east face, "S" on the west face, "W MASS" on the north face and "CONN" on the south face. It is 9.9 feet long, set in excavation made in sandy loam. Monument was set May 29, 1907.

1906 Station 115578
Bound #52 - 1,699 feet east
Bound #52A - 379 feet east
Bound #54 - 2,005 feet west



Looking Northerly



Looking Northerly

LINE BOUND #54

REGULATION GRANITE MONUMENT

PAVED HIGHWAY

From the Intersection of Stafford Road and Union Road, southeast of Lake George, in the Town of Wales, proceed southwesterly on Stafford Road to bound at 0.7 miles. Highway, after turning south, runs straight and crosses a culvert 185 feet north of the bound, ascends southerly with an apparent crest at a break in grade 125 feet south of the bound.

Bound is located 27 feet east of the center of the traveled way in front of a cellar hole where the "Bush Tavern" formerly stood. There is a ranch style house southeast of the bound. The land rises west of the highway. East of the bound there is descending woodland. North of the cellar hole land drops off to the east and south.

Bound is marked by a regulation granite monument showing 3.7 feet above the ground. The top is 1' x 1' with a 3/4" x 1 3/4" drill hole in the center. It is lettered "1906" on the west face, "W MASS" on the north face and "S CONN" on the south face. There are small chips in the northwest and southwest top corners and a chip in the south top face. It is 9.5 feet long, set in excavation made in gravel at a point 13.81 feet. S 9° 55' 54" W true bearing from the location of the 1826 monument.

1906 Station 117583
 Bound #53 - 2,005 feet east
 Bound #55 - 2,723 feet west



Looking Northerly



Looking Northerly

LINE BOUND # 55

SMALL GRANITE MONUMENT

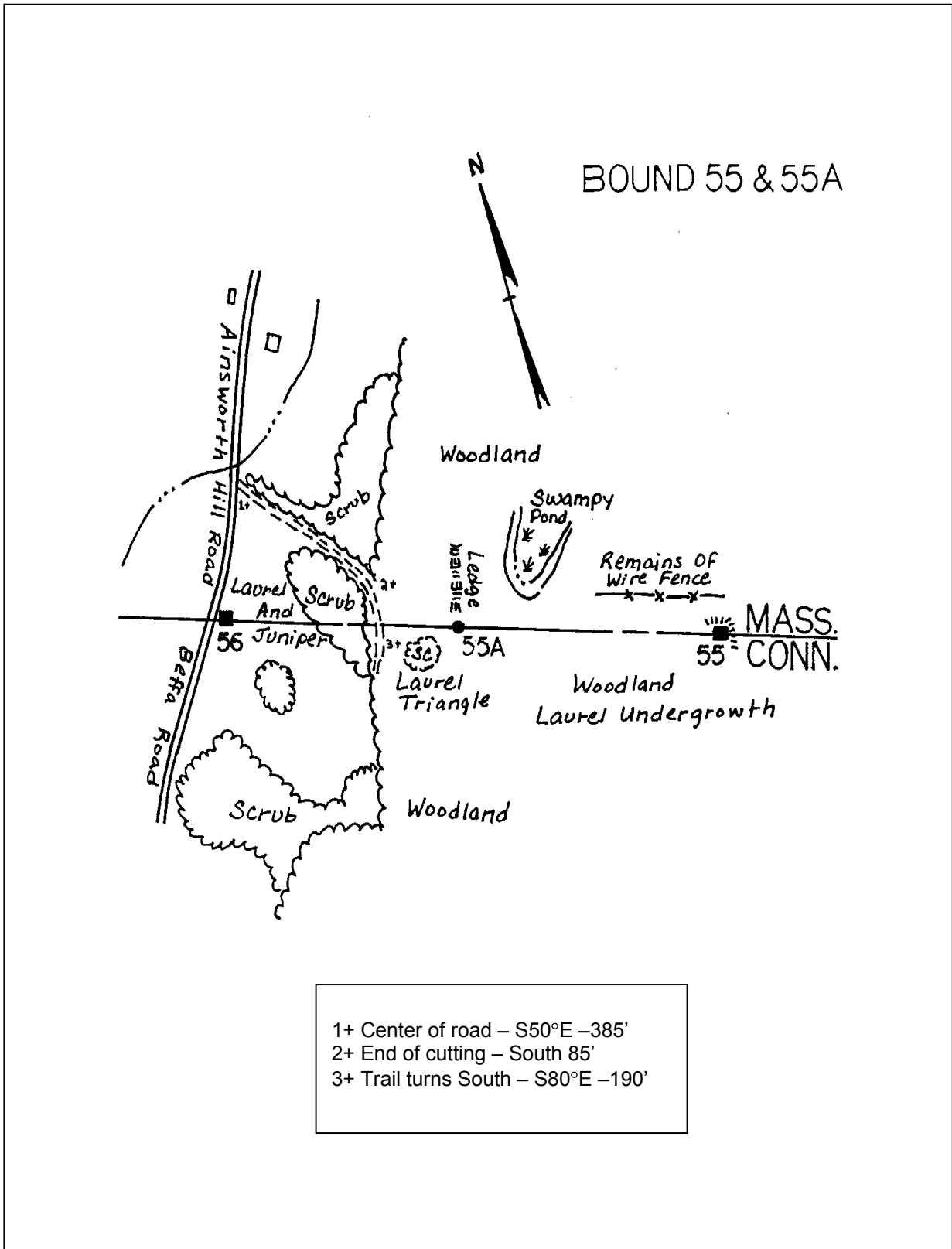
INTERIOR LINE SUMMIT

From the State Line on Ainsworth Hill Road (Beffa Road in Connecticut), at Bound #56, proceed northerly on Ainsworth Hill Road 290 feet. Leave road and proceed southeasterly following sketch to Bound #55A. Area is overgrown and close attention should be paid to the bearings and distances shown on the sketch. Proceed S 75° E, 614'± to the bound.

Bound is located at the line summit on the northeasterly slope of a hill. About 15 feet north of the bound, the ledge drops 10 feet to an indistinct wood road paralleling the line, as does a wire fence 55 feet further north. With line cleared it would see Bound #54 to the east and Bound #59A to the west.

Bound is marked by a granite monument, weathered, but in good condition, showing 1.3 feet above the ground. It is 7 inches by 12 inches in section, with a 3/4" x 1" drill hole in the top, and is lettered "M" on the north face and "C" on the south face. It is 4.8 feet long, set in excavation made 3.0 feet in ledge. Monument was set June 6, 1907.

1906 Station 120306
 Bound #54 - 2,723 feet east
 Bound #55A - 614 feet west
 Bound #56 - 1,165 feet west



1997



Looking South



Looking South

LINE BOUND #55A**DRILL HOLE****INTERIOR INTERMEDIATE POINT**

From the State Line on Ainsworth Hill Road, (Beffa Road in Connecticut) at Bound #56, proceed northerly on Ainsworth Hill Road 290 feet. Leave road and proceed southeasterly following bearings and distances in sketch through very thick laurel and to the bound.

Bound is located on a low ridge on the western brow of a hill. It is 12 feet south of the southerly end of an exposed ledge outcrop showing a 4 foot steep face to the west and extending N 20°E for over 100 feet. It is in the top of an outcrop of ledge which just shows above the surface of the ground and is partly covered with earth. It is covered by a pile of stones.

Bound is 4 feet west of a 15" White Oak Tree with a diamond shaped trail marker nailed to it 6 feet above the ground and 6 feet south-southwest of a 6" White Oak Tree. Northeast of the bound and some distance away there is a pond which can be seen from the bound and reference marks. Woodland drops away to the east and west and is level to the north and south.

Bound is marked by a 1 inch drill hole, 1 1/2 inches deep, enclosed in a 3 1/2 inch square cut in the top of an outcrop of ledge.

Bound is referenced as follows:

- 55-A A North 26.11 feet from a point 1.42 feet east of bound, a 3/4 inch drill hole 1 1/2 inches deep in the conspicuous, rounded top of the ledge, 6 feet north of its summit. This point marks Station 11 of the random line.
- 55-A B East 2.42 feet of the bound, on line a 1/2" x 1" drill hole in a 2" chiseled square in a slanted section of ledge 1 foot below ground level and hemmed in by tree roots. This point marks a signal station on the line. Point is under a pile of stones.

1906 Station 120920
Bound #55 - 614 feet east
Bound #56 - 551 feet west



Aerial View



Looking Northeasterly



Looking Easterly

LINE BOUND # 56

REGULATION GRANITE MONUMENT

GRAVEL ROAD

From the intersection of Route 19 at Ainsworth Hill Road, in the Town of Wales, south of Lake George, proceed southerly on Ainsworth Hill Road to bound at 1.5 miles. After descending the southerly slope of a large hill, the road turns sharply to the south and crosses a brook, then crosses a low rise and descends to a culvert 350 feet north of the line. From this point the road ascends steeply, leveling off 600 feet south of the line with the bound, opposite a point about one-third up the rise.

Bound is located 36 feet east of the center of the traveled way, 6 feet above the level of the road and 2 feet west of the center of the east road wall. Cultivated blueberries are planted west of the bound and there is a pond to the northwest.

Bound is marked by a regulation granite monument showing 4.1 feet above the ground and tipped slightly to the north. The top is 1' X 1' with a 1/2" x 2 1/4" drill hole in the center. It is lettered "1906" on the east face, "W MASS" on the north face and "S" CONN" on the south face. There is a significant chip in the northwest top corner. It is 9.5 feet long, set in excavation made in sandy loam. Monument was set June 6, 1907. Monument was excavated, plumbed up over undisturbed base and backfilled with concrete to the base of the 18 inch batter on November 11, 1930.

1906 Station 121471
 Bound #55 - 1,165 feet east
 Bound #55A - 551 feet east
 Bound #57 - 3,978 feet west



Looking Easterly



Looking Easterly

LINE BOUND #57

REGULATION GRANITE MONUMENT

PAVED HIGHWAY

From the Intersection of Route 19 at Ainsworth Hill Road, in the Town of Wales, south of Lake George, proceed southerly on Route 19 to bound at 1.5 miles. The highway after passing second crest descends steeply, southwesterly, running straight and turns sharply to the south opposite the bound.

Bound is located 33 feet west of the center of the traveled way and 3 1/2 feet east of the center of the west highway wall. It is 27.5 feet southeast of the southeast corner of a concrete block one car garage and opposite a culvert at the middle of the sharp curve in the highway. There are two 1 story frame residences on the east side of the highway and a cabin owned now or formerly by John Kitt on the west side, well back from the highway and north of the line. South of the line land descends to the east and rises steeply to the west of the highway.

Bound is marked by a regulation granite monument showing 3.6 feet above the ground. The top is 1' x 1' with 3/4" x 1 1/2" drill hole in the center. It is lettered "1906" on the east face, "W MASS" on the north face and "S CONN" on the south face. The bound is chipped on the northeast and southwest top corners. It is 9.1 feet long, set in excavation made in wet loam and coarse gravel. Monument leans east, but is firmly set. Monument was set June 7, 1907.

1906 Station 125449
Bound #56 - 3,978 feet east
Bound #58 - 3,940 feet west

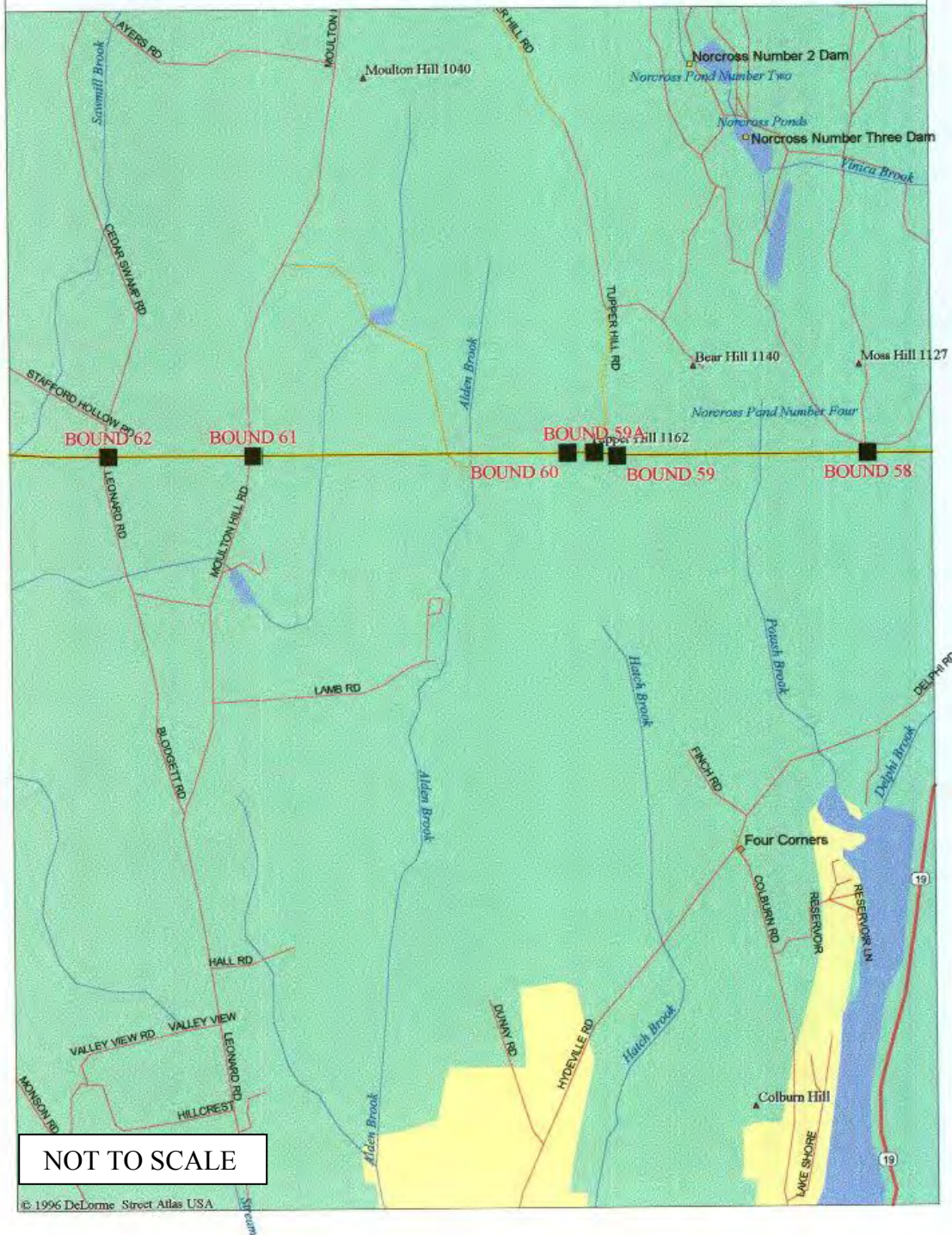


Looking Northwesterly



Looking Northwesterly

CT - MA Line Section - J



LINE BOUND #58

SMALL GRANITE MONUMENT

INTERIOR LINE SUMMIT

From the Intersection of Reed Hill Road and Monson Road, in the Town of Wales, proceed westerly 1.05 miles on Monson Road to intersection of Peck road. Proceed southerly and southwesterly 0.4 miles on road to buildings of Tupper Hill Wildlife Sanctuary.

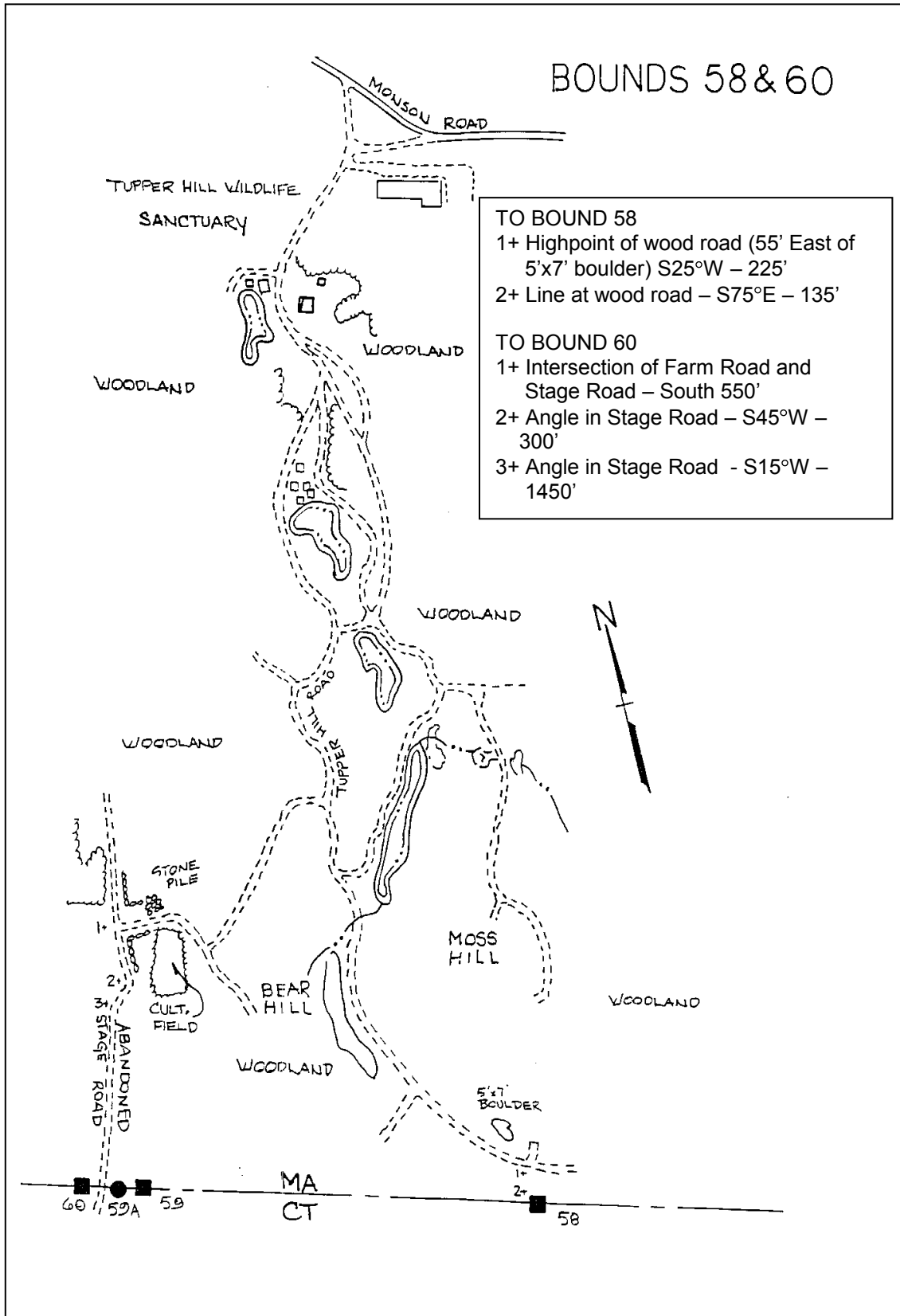
Following sketch, proceed southerly on private gravel roads, passing east of Norcross Ponds Numbers 2 and 3 and climbing north slopes of Moss Hill 1.95 miles to State Line, marked by Sanctuary Signs and stone heap on the north side of woods road. Proceed easterly on line over level land 135 feet to the bound.

Bound is located at the line summit, north of and slightly below the extreme summit of a ridge. With line cleared it would see Bound #55A to the east and Bound #59A to the west.

Bound is marked by a rough granite monument showing 1.6 feet above the ground and leaning slightly south. It is 7 inches by 11 inches in section, with $\frac{1}{4}$ " drill hole in the center. It is lettered "M" on the north face and "C" on the south face with several chips out of it and other signs of abuse. It is set in excavation made in loam. Monument was set June 6, 1907.

Permission must be obtained from Norcross Wildlife Foundation to enter their reserve to reach Bounds #58, #59, #59A and #60.

1906 Station 129389
Bound #57 - 3,940 feet east
Bound #59 - 4,007 feet west



1997



Looking Southerly



Looking Northeasterly

LINE BOUND #59

WALES-MONSON TOWN CORNER

REGULATION GRANITE MONUMENT

INTERIOR TOWN CORNER

From the State Line on the abandoned road, leading over Tupper Hill at Bound #60, proceed easterly on line 296 feet to the bound. Land rises to a line summit at Bound #59A, 82 feet east of Bound #60, and then descends steeply to the east.

Bound is located on the southeasterly slope of a hill. The hill rises steeply to the northwest with ledge outcropping 4 feet high, about 50 feet west of and 20 feet above the bound which stands on a narrow level table in the slope.

Bound is marked by a regulation granite monument showing 4.1 feet above the ground. The top is 1' x 1' with a 3/4" x 1 1/2" drill hole in the center. It is lettered "M 1906" on the west face, "W" on the east face, "MASS" on the north face and "S" CONN" on the south face. It is 9.9 feet long, set in excavation made in yellow loam. Monument was set June 7, 1907.

Permission must be obtained from Norcross Wildlife Foundation to enter their reserve to reach Bound #58, #59, #59A and #60.

1906 Station 133396
 Bound #58 - 4,007 feet east
 Bound #59A -214 feet west
 Bound #60 – 296 feet west



Looking Northeasterly



Looking Northerly

LINE BOUND # 59A

BOUNDARY ROCK

DRILL HOLE

INTERIOR LINE SUMMIT

From the State Line on the abandoned road leading over Tupper Hill at Bound #60, proceed easterly on line 82, feet to the bound. Land rises to ledge at line summit.

Bound is located in a rounded block of granite 4 feet by 6 feet, split off from the northerly end of the ledge and a foot higher than the central part of the ledge. Ten feet to the south the largest and most southerly block of the ledge rises to a level with the northerly block containing the bound. With line cleared it would see Bound #55A to the east and Bound #65 to the west.

Bound is marked by a one inch drill hole sunk 1 1/2 inches deep and enclosed in a 2 1/4 inch square countersunk in the northern portion of the block of granite.

Bound is referenced as follows:

- 59A A South 4.0 feet from a point 0.2 feet of the bound, a 3/4" X 1 1/2" drill hole enclosed in a 6 inch triangle in the lower central part of the ledge. This point marks triangulation station "Boundary Rock 2." A 10" Red Oak Tree is growing out of a seam in the granite and apparently is forcing the bound and reference marks apart, thus the change in the distance between them.
- 59A B North 1.85 feet from the bound, a 3/4" x 1 1/2" drill hole, 1 inch deep at the northerly edge of the northerly part of the ledge. This point is not identified in the record. This point has shifted to the north with 59A.

Continued

LINE BOUND #59A Continued

59A C Southeast 36.2 feet of the bound, a copper bolt with a cross on it, set into the east crown of the ledge. It is under a stone heap erected in 1954. This point was established by Borden's survey of Massachusetts about 1834. There is no record as to how Borden determined the State Line, and this record as to how Borden determined the State Line, and this point never was officially established as a point accurately in the boundary. The 1986-87 perambulation could not determine the location of the bolt.

Permission must be obtained from Norcross Wildlife Foundation to enter their reserve to reach Bound #58, #59, #59A and #60.

1906 Station 133610
Bound #59 – 214 feet east
Bound #60 – 82 feet west



Southwesterly, Aerial View



Looking Northwesterly



Aerial View

LINE BOUND # 60

REGULATION GRANITE MONUMENT

ABANDONED ROAD

From the Intersection of Reed Road and Monson Road in the Town of Wales, proceed westerly 1.05 miles on Monson Road to an intersecting private road. Proceed southerly and southwesterly 0.4 miles on road to buildings of Tupper Hill Wildlife Sanctuary.

Following sketch (page 163), proceed southerly on private roads, passing east of Norcross Pond Number 2, proceed westerly over dam at Pond Number 3, proceed southwesterly following roads to the bound. Line is marked by sanctuary signs.

Bound is located 22 feet west of the center of the abandoned road on the southerly slope of a hill with the summit of a ridge lying east of the road. Land rises to the east and north and descends to the south and southwest.

Bound is marked by a regulation granite monument showing 3.8 feet above the ground and leaning to the south. The top is 1' x 1' with a $\frac{3}{4}$ " x 1 $\frac{1}{2}$ " drill hole in the center. It is lettered "1906" on the west face, "M MASS" on the north face and "S CONN" on the south face. It is 10.0 feet long, set in excavation made in yellow loam. Monument was set June 7, 1907.

Permission must be obtained from Norcross Wildlife Foundation to enter their reserve to reach Bound #58, #59, #59A and #60.

1906 Station 133692
 Bound #59 - 296 feet east
 Bound #59A - 82 feet east
 Bound #61 - 5,364 feet west



Looking Northerly



Looking Northeasterly

LINE BOUND #61

REGULATION GRANITE MONUMENT

PAVED HIGHWAY

From the Intersection of Leonard Road and Moulton Hill Road, 2.8 miles north of the center of the village of Stafford, proceed northerly on Moulton Hill road to the bound at 0.45 miles. Highway rises steeply, northerly, to a point 200 feet south of the line where it flattens out and curves to the north.

Bound is located 21 feet east of the center of the traveled way, 15 feet north of the north end of the east highway wall, and 39 feet east of the west highway fence. The residence of present or former C. Goal is on the east side of the highway immediately north of the line and a 1 1/2 story brick house which is the residence of Stebney is located south of the line also on the east side of the highway. The highway is level north of the bound.

Bound is marked by a regulation granite monument showing 4.1 feet above the ground. The top is 1' X 1' with a 1/2" x 1 1/2" drill hole in the center. It is lettered "1906" on the west face, "M MASS" on the north face and "S CONN" on the south face. There are small chips in the southeast, southwest, and northwest top corners, and a large chip in the top of the south face. It is 9.9 feet long, set in excavation made in sandy soil and gravel. Monument was set June 4, 1907.

1906 Station 139056
Bound #60 - 5,364 feet east
Bound #62 - 2,216 feet west



Looking Northerly



Looking Northerly

LINE BOUND #62

REGULATION GRANITE MONUMENT

PAVED HIGHWAY

From the Intersection of Leonard Road and Moulton Hill Road, 2.8 miles north of the center of the village of Stafford, proceed westerly and northerly 0.7 miles on Leonard Road to the bound. The highway descends northerly to a low point opposite the bound. North of the line the road ascends northerly and is curving to the east.

Bound is located 80 feet east of the center of the traveled way and 13 feet west of the center of the east highway wall. East of the bound land rises slowly. West of the highway land drops away rapidly. Bound is located about 500 feet south of the intersection of Stafford Hollow Road and Cedar Swamp Road.

Bound is marked by a regulation granite monument showing 4.3 feet above the ground and leaning slightly north and west. The top is 1' x 1' with a $\frac{3}{4}$ " x 2" drill hole in the center. It is lettered "1906" on the west face, "M MASS" on the north face and "S CONN" on the south face. There is a small chip in the southwest top corner. It is 9.9 feet long set in excavation made in yellow loam and hardpan. Monument was set June 4, 1907.

1906 Station 141272
Bound #61 - 2,216 feet east
Bound #63 - 5,850 feet west

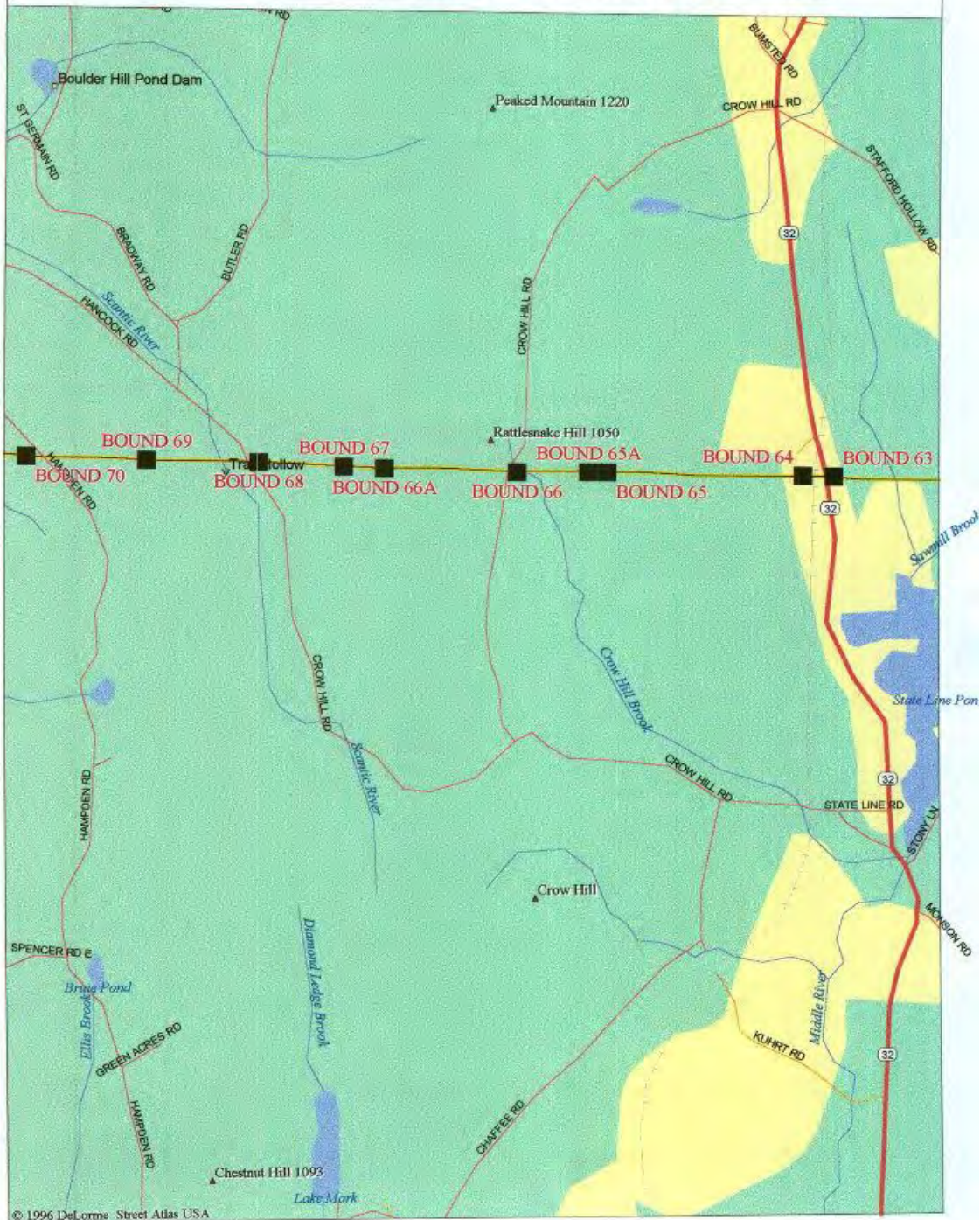


Looking Southerly



Looking Southerly

CT - MA Line Section - K



1997

CONNECTICUT - MASSACHUSETTS STATE BOUNDARY LINE PERAMBULATION
CONNECTICUT DEPARTMENT OF TRANSPORTATION

LINE BOUND #63

REGULATION GRANITE MONUMENT

PAVED HIGHWAY

From the grade crossing on Route 32 (Monson Road), at the Central Vermont Railroad north of State Line Pond, proceed southerly on Route 32, 580 feet to the bound.

Bound is located 22 feet east of the center of the traveled way. There are 1 1/2 story frame residences on the east side of the highway north and south of the bound and a railroad west of the highway opposite the bound.

Bound is marked by a regulation granite monument showing 4 feet above the ground. The top is 1' X 1' with a 1/2" x 1 1/2" drill hole in the center. It is lettered "1906" on the west face, "M Mass" on the north face and "S" CONN" on the south face. Bound is leaning slightly to the west and there are chips in all top corners. It is 10.0 feet long set in excavation made in gravel and loose stones. Monument was set June 4, 1907.

1906 Station 147122
Bound #62 - 5,850 feet east
Bound #64 -212 feet west



Looking Northerly



Looking Northerly

LINE BOUND #64

REGULATION GRANITE MONUMENT

RAILROAD

From the State Line on Route 32 (Monson Road), at Bound #63, proceed westerly on line 212 feet to the bound.

Bound is located 20.7 feet west of the west rail of the main track of the Central Vermont Railroad and 9 feet east of the fence on the west right of way line. It is about 600 feet south of the grade crossing at Route 32. A gravel parking area extends east of the right of way to the highway with swamp land west of the bound.

Bound is marked by a regulation granite monument showing 4.8 feet above the ground. The top is 1' x 1' with a 1/2" x 1 1/2" drill hole in the center. It is lettered "1906" on the east face, "M MASS" on the north face and "S CONN" on the south face. Bound is leaning to the west and there are small chips in the northeast, southeast, and southwest corners, and large chips in the northwest corner. It is 9.6 feet long set in excavation made in gravel and cobbles. Monument was set August 9, 1907.

1906 Station 147334
Bound #63 - 212 feet east
Bound #65 - 3,177 feet west



Looking Northerly



Looking Northerly

LINE BOUND #65

REGULATION GRANITE MONUMENT

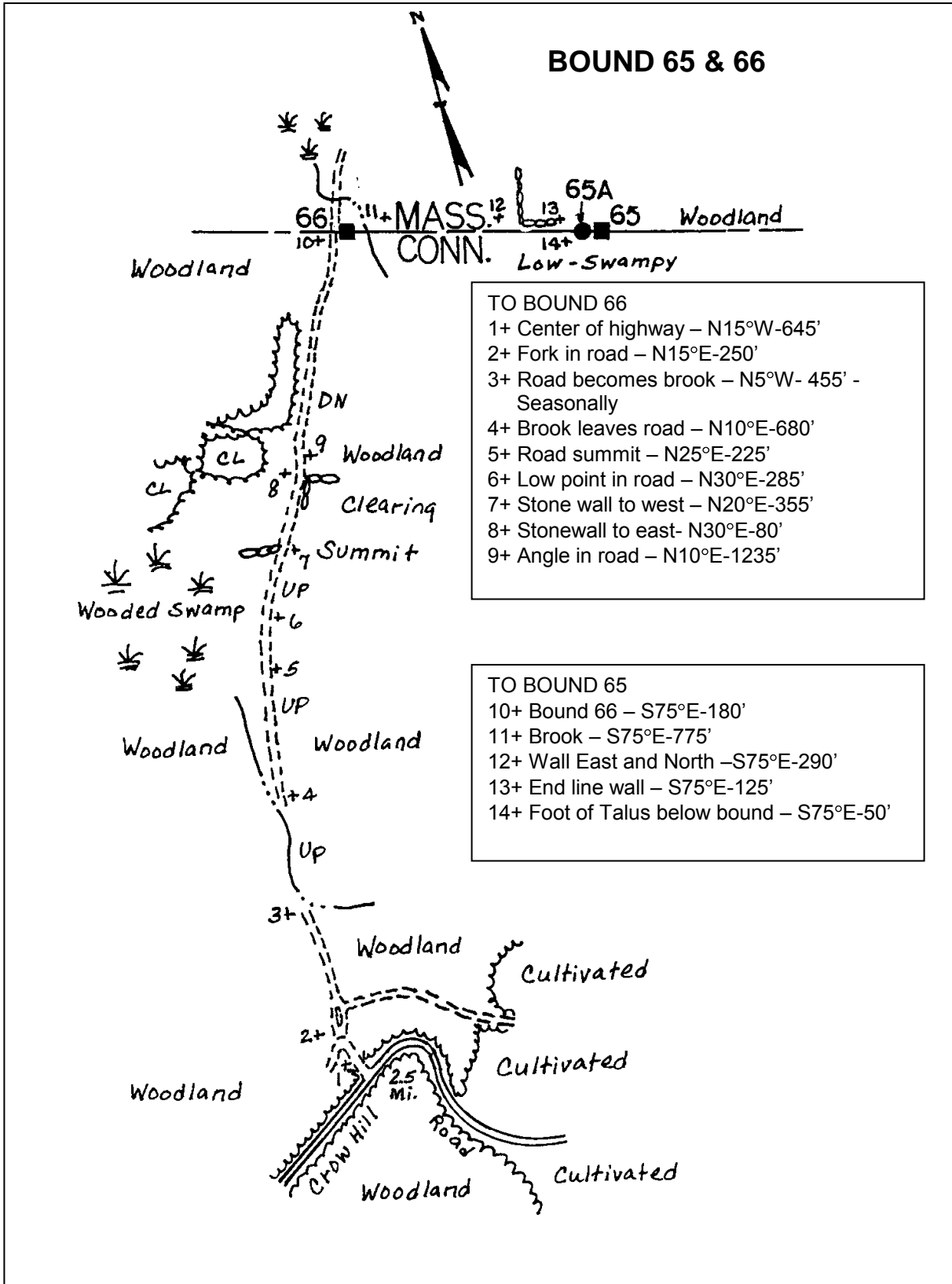
INTERIOR LINE SUMMIT

From the State Line on an abandoned road at Bound #66, proceed easterly on line 1,402 feet to the bound. Timber line between old woods on north and cut-over land growing up to scrub on south is clearly distinguishable. Line descends easterly for 180 feet to Crow Hill Brook and then rises steadily for 775 feet to the west end of a line wall at its intersection with a wall to the north. This line wall continues for 290 feet to its east end, 125 feet west of the rubble at the base of the ledge below the bound. Line is marked by yellow paint splashes on trees.

Bound is located at the line summit on the westerly brow of the southerly slope of a wooded hill on an outcropping ledge which breaks away 25 feet west of the bound and drops about 10 feet to the general level of the woodland east of the bound. Rolling woodland to the east, north and south descends to the west.

Bound is marked by the dressed portion of a regulation granite monument showing 3 feet above the ledge. The top of the monument is 1' X 1' with a $\frac{3}{4}$ " x 1 $\frac{1}{2}$ " drill hole in the center. It is lettered "1906" on the west face, "M MASS" on the north face and "S" CONN" on the south face. It is 4 feet long, cemented into an excavation made 1 foot into the ledge. It was set June 8, 1907.

1906 Station 150511
 Bound #64 - 3,177 feet east
 Bound #65A - 8 feet west
 Bound #66 - 1,402 feet west



1997



Looking Southeasterly



Looking Southeasterly

LINE BOUND # 65A

DRILL HOLE

INTERIOR INTERMEDIATE POINT

From the State Line on an interior summit at Bound #65, proceed westerly on line 8 feet to the bound.

Bound is located near the southwest end of the top of an outcrop of ledge on the westerly brow of the southerly slope of a hill. It is 8.17 feet west of, and a little below Bound #65. Ledge and land drop away to the west, rolling land in other directions.

Bound is marked by a $\frac{3}{4}$ " drill hole 1 $\frac{1}{2}$ " deep, enclosed in a 2 $\frac{1}{2}$ " square, beneath small stone pile.

Bound is referenced by a $\frac{1}{2}$ " drill hole 1 $\frac{1}{2}$ " deep, enclosed in a 3" countersunk square 2.06 feet north of the bound, which marks Station #76 of the random line of the 1906 survey.

1906 Station 150519
Bound #65 - 8 feet east
Bound #66 - 1,394 feet west



Southeasterly, Aerial View

ANGLE BOUND # 66

REGULATION GRANITE MONUMENT

ABANDONED ROAD

From the Intersection of Route 32 and Crow Hill Road #2, 1.1 miles south of the State Line, in the Town of Stafford, proceed westerly 1.2 miles on Crow Hill Road to the Intersection of a blind wood road. Highway, after passing between cultivated fields, turns northerly and enters woodland, rising steeply and making a 90 degree turn to the southwest. Entrance to woodland is 200 feet southwest of the point where the road straightens out.

Following sketch (page 183), proceed northerly on wood road 4,220 feet to the bound. Road descends for 895 feet to a brook flowing southerly. It then runs relatively level, and descends to the line with a brook at the low point 130 feet north of the bound.

Bound is located 18 feet east of the center of the road, 130 feet south of a brook and 10 feet east of the east gate post of a cyclone gate across the road. Woodland on both sides of the road rises to the south and drops off to the east, relatively level to the north and west.

Bound is marked by a regulation granite monument showing 4.1 feet above the ground. The top is 1' x 1' with a 1/2" X 1 1/2" drill hole in the center. It is lettered "1906" on the west face, "M MASS" on the north face and "S CONN" on the south face. There is a chip in the southwest top corner, and it tips slightly to the east. It is 9.9 feet long set in excavation made in sand. Monument was set June 8, 1907, in the exact location of the old 1826 monument.

1906 Station 151913
 Bound#65 - 1,402 feet east
 Bound #65A - 1,394 feet east
 Bound#66A - 1,883 feet west
 Bound#67 - 2,600 feet west



Looking Northwesterly



Looking Northwesterly

LINE BOUND #66A

DRILL HOLE

INTERIOR LINE SUMMIT

From the State Line on an abandoned road at Bound #67, proceed easterly on line 717 feet to the bound. For 375 feet the line ascends steeply, easterly, after which the ascent is precipitous over ledges.

Bound is located at the absolute summit of a steep, sharp, outcrop of ledge on the summit of a hill. Twenty feet east of the bound the ledge drops 30 feet with land dropping off steeply to the east and west. Ledge slopes down gradually to the north and south in a sharp ridge.

Bound is marked by a 1/2" drill hole 1 1/2" deep, enclosed in a 3" square, cut in the sloping edge of an outcrop of ledge.

Bound is referenced as follows:

66A A North 2.80 feet from the bound, a 3/4" drill hole 1 1/2" deep, enclosed in the flat, level portion of the same outcrop. This point marks Triangulation Station "Connecticut Line 2."

66A B South 8.69 feet from the bound, a cross cut in the southerly sloping face of the ledge. This point marks a point on the random line of the 1906 survey. This reference point was not recovered during the 1985-1986 and 1997 perambulations.

Borden's Triangulation Station "Connecticut Line" made on this ridge in 1834 was not recovered on the 1906 survey.

1906 Station 153796
Bound #66 - 1,883 feet east
Bound #67 - 717 feet west



Aerial View



Looking Northerly

LINE BOUND #67

REGULATION GRANITE MONUMENT

ABANDONED ROAD

From the Intersection of Route 32 and Crow Hill Road #2, 1.1 miles south of the State Line, in the Town of Stafford, proceed westerly, northwesterly, and northerly 2.1 miles on Crow Hill Road to an abandoned road at end of paved surface. Highway turns to the north about 1,000 feet south of the entrance to the abandoned road and about 200 feet beyond the entrance starts a steep descent to the north.

Proceed N 20° E on abandoned overgrown but clearly distinguishable road through woodland 3,530 feet to the bound. Road rises gradually to a summit 2,300 feet north of the highway and then descends gradually, northerly, to a point 100 feet north of the bound where it starts a steep descent northerly.

Bound is located 16 feet east of and 3 feet above the center of the road which is level at this point. Land rises steeply to the east and drops off steeply west of the road.

Bound is marked by a regulation granite monument showing 4.1 feet above the ground. The top is 1' x 1' with a 3/4" X 1 3/4" drill hole in the center. It is lettered "1906" on the east face, "M MASS" on the north face, and "S CONN" on the south face, and there are chips in the northwest and southwest top corners. Monument leans slightly to the East. It is 9.5 feet long set in excavation made in sandy loam. Monument was set June 8, 1907.

1906 Station 154513
 Bound #66 - 2,600 feet east
 Bound #66A - 717 feet east
 Bound #68 - 1,429 feet west



Looking Northerly



Looking Northerly

ANGLE BOUND # 68

REGULATION GRANITE MONUMENT

GRAVEL ROAD

From the Intersection of Route 32 and Crow Hill Road #2, 1.1 miles south of the State Line, in the Town of Stafford, proceed westerly, northwesterly, and northerly 2.9 miles on Crow Hill Road to the bound. Road, after running fairly level passes a summit opposite a 1 1/2 story frame house on the west side of the road, 240 feet south of the bound. Crow Hill Road #2 changes from a paved to gravel surface 0.65 miles southerly of the bound.

Bound is located 17 feet east of the center of the traveled way. The road is descending gradually to the north past the bound. Undulating land on both sides of the road.

Bound is marked by a regulation granite monument showing 3.5 feet above the ground. The top is 1' x 1' with a 3/4" X 2" drill hole in the center of the monument. It is lettered "1906" on the west face, "M" MASS" on the north face, and "S CONN" on the south face. Monument is chipped on the southeast and southwest top corners and, also, on the top portion of the south face. It is 9.5 feet long set in excavation made in sandy loam. Monument was set June 10, 1907, in the exact location of the old 1826 monument.

1906 Station 155942
Bound #67 - 1,429 feet east
Bound #69 - 1,620 feet west



Looking Northerly



Looking Northerly

LINE BOUND # 69SMALL SANDSTONE MONUMENT
SUMMIT

INTERIOR LINE

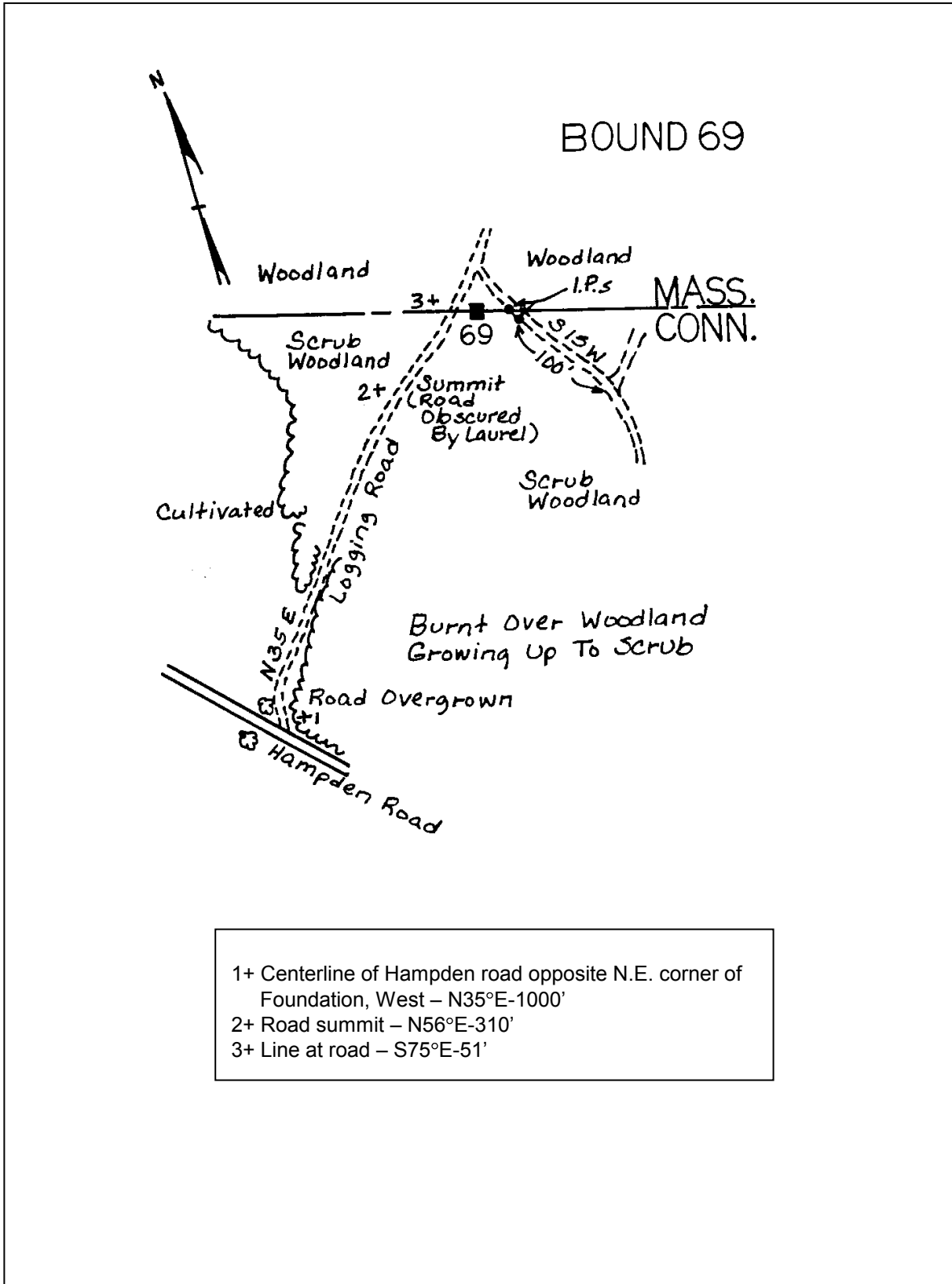
From the Intersection of Route 190 and Hampden Road in the center of the village of West Stafford, proceed northerly 4.3 miles on Hampden Road, a paved highway changing to gravel to an intersecting logging road. For the last 700 feet south of the logging road, the road runs straight and relatively level, curves to the west, and descends northerly with a stone foundation on the west, opposite the logging road, which leaves the road south of a cellar hole on the east. Said road being partially overgrown at its beginning.

Following sketch, proceed northerly up grade on logging road 1,310 feet to line at flat summit and noticeable change in timber to the east. Proceed easterly on line 51 feet to the bound.

Bound is located on the northerly slope of a hill with land dropping off to the north and northeast, descending slightly to the west and rising to the southeast.

Bound is marked by a rough sandstone monument showing 1.6 feet above the ground. It is 6" X 10" in section with a 1/2" X 1/2" drill hole on the easterly side of the top, and is lettered "M" on the north face, and "C" on the south face. It is 5.7 feet long set in excavation made in sand and hardpan. Monument was set June 10, 1907.

1906 Station 157562
Bound #68 - 1,620 feet east
Bound #70 - 1,659 feet west





Looking Southerly



Looking Southerly

LINE BOUND #70

REGULATION GRANITE MONUMENT

GRAVEL ROAD

Beginning in southeast Hampden, Massachusetts, proceed southeasterly on Stafford Road (A.K.A. Hancock Road) from its intersection with Thresher and Rock-A-Dundee Roads 0.7 miles, passing St. Germain Road on the right at 0.5 miles, to a gravel road on the right opposite utility pole N.E.T.T. #21, M.E.C.O. #22, proceed south - southeasterly on gravel road (Hampden Road in Connecticut) 0.8 mile to the bound.

Bound is located 22 feet southwest of the center of Hampden Road at the north side of a wood road. Land on both sides of the road descends to the north and rises to the south.

Bound is marked by a regulation granite monument showing 3.7 feet above the ground. The top is 1' x 1' with a P.K. Nail in a drill hole in the center. It is lettered "1906" on the west face, "M MASS" on the north face, and "S CONN" on the south face. The monument has graffiti on its East face, It has a chiseled square on the top southeast corner and a small chip on the Northeast corner. It is 9.6 feet long set in excavation made in loam and clay. Monument was set June 10, 1907.

1906 Station 159221
Bound #69 - 1,659 feet east
Bound #71 - 351 feet west

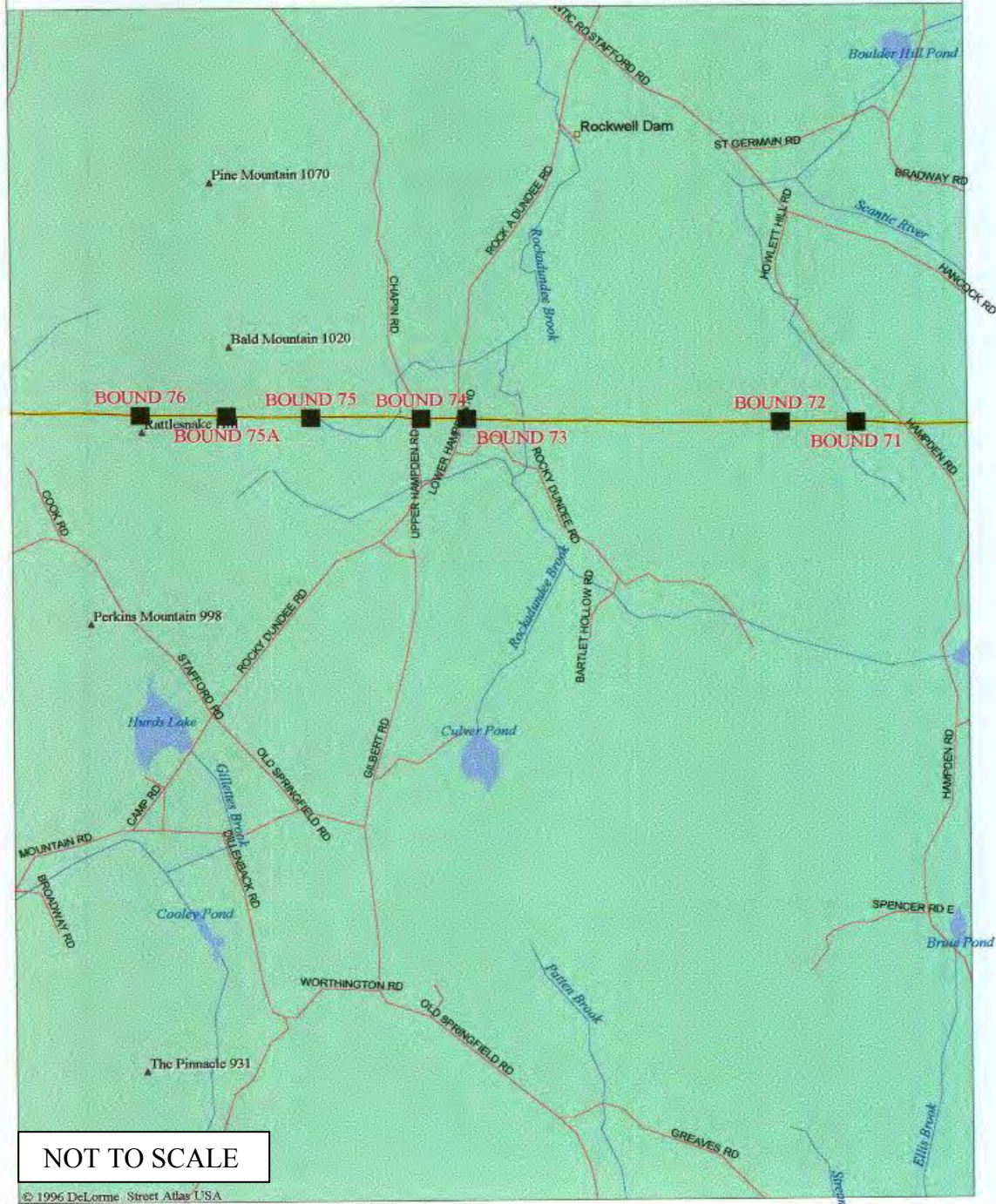


Looking Northerly



Looking Northerly

CT - MA Line Section - L



1997

CONNECTICUT - MASSACHUSETTS STATE BOUNDARY LINE PERAMBULATION
CONNECTICUT DEPARTMENT OF TRANSPORTATION

LINE BOUND #71

MONSON – HAMPDEN TOWN CORNER

REGULATION GRANITE MONUMENT

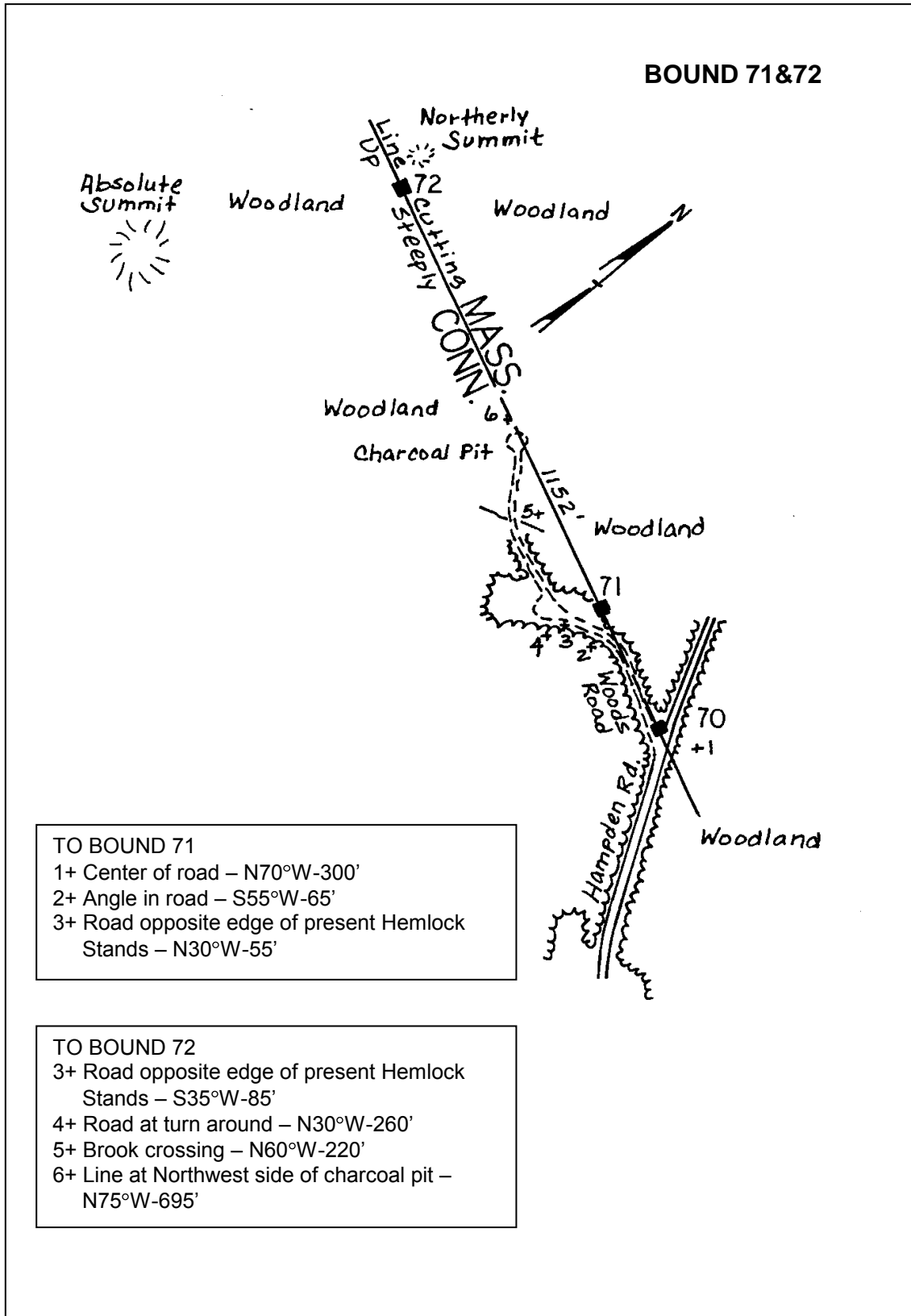
INTERIOR TOWN CORNER

From the State line on the West Stafford-Hampden Road at Bound #70, Following sketch, proceed westerly on wood road 365 feet to a small stand of Hemlocks. Then proceed N 30°W 55 feet to the bound.

Bound is located in a swampy hollow with undulating land to the north and east.

Bound is marked by a regulation granite monument showing 4 feet above the ground. The top is 1' X 1' with a 3/4" X 2" drill hole in the center. It is lettered "M 1906" on the east face, "H" on the west face, "MASS" on the north and "S" CONN" on the south face. There is a chip in the top portion of the north face and smaller chips in all the top corners. Monument leans slightly to the west & north. It is 9.7 feet long set in excavation made in loam and clay. Monument was set June 10, 1907.

1906 Station 159572
Bound #70 - 351 feet east
Bound #72 - 1,152 feet west





Looking Northerly



Looking Northerly

LINE BOUND #72

SMALL GRANITE MONUMENT

INTERIOR LINE SUMMIT

From the State Line on the West Stafford - Hampden Road at Bound #70, proceed westerly on wood road 365 feet to a small stand of Hemlocks northeast of the remains of a cabin.

Following sketch, proceed northwesterly across brook and up slope to line cutting at foot of steep hill. Proceed westerly along line cutting up steep hill to easterly brow and across flat summit in woodland to bound at line summit.

Bound is located S 20° E, 100 feet and slightly below the northerly summit of a hill. The land is level to the south and rising steeply further to the south to the absolute summit of the hill about 600 feet away. The land drops off gently to the west, rises to the north for 100 feet and then descends precipitously. To the east the land descends gently for about 200 feet and then falls away steeply.

Bound is marked by a granite monument showing 1.2 feet above the ground. The top is 1' x 1' with a 1/2" x 1 1/2" drill hole in the center. It is very irregular in shape, about 7" by 10" in section at ground level and lettered "C" on the south face below ground level. It is 5 feet long set in excavation made in sandy loam and large boulders. Monument was set June 10, 1907.

1906 Station 160724
Bound #71 - 1,152 feet east
Bound #73 - 4,866 feet west



Looking Northerly



Looking Northerly

LINE BOUND #73

REGULATION GRANITE MONUMENT

GRAVEL ROAD

From the Intersection of Rocky Dundee Road and Lower Hampden Road in the Town of Stafford, proceed northeasterly and northerly 0.1 mile on Lower Hampden Road. Road straightens out at the southerly end of a level section of road, opposite the bound.

Bound is located 25 feet east of the center of the traveled way. Land drops away to the west and rises steeply east of the bound.

There is a 40" Red Oak 41.5 feet S 20° E of the bound and an 18" Red Oak (in photo) 37 feet northeast of the bound. Red oaks are 66 feet apart.

Bound is flush with ground level and is identified by a brass disk set slightly south of the center of granite. The disk is stamped "STATE LINE BOUNDARY CONN/MASS 73".

The upper portion of the bound is stored at the West Willington State Maintenance Garage.

1906 Station 165590
Bound #72 - 4,866 feet east
Bound #74 - 729 feet west



Aerial View



Looking Southeasterly

ANGLE BOUND #74

REGULATION GRANITE MONUMENT

GRAVEL ROAD

From the Intersection of Rocky Dundee Road and upper Hampden Road in the Town of Stafford, 4.2 miles northeast of Somers, proceed northerly 0.2 miles on upper Hampden Road to bound on the right. Road is ascending northerly to a summit about 50 feet south of the line, opposite two cottages on the east side of the road, and is level opposite the bound.

Bound is located 19 feet east of the center of the traveled way. Land east of the bound is level for 50 feet and then drops away to the east. Level woodland lies west of the road. There are two cottages, one southeast and the other northeast of the bound.

Bound is marked by a regulation granite monument showing 3.9 feet above the ground. The top is 1' X 1' with a 3/4" X 1 1/2" drill hole in the center. It is lettered "1906" on the west face, "H MASS" on the north face and "S CONN" on the south face. There are small chips in the southwest, northwest, and northeast top corners, and a chip in the top portion of the south face. It leans slightly to the North and East. It is 9.3 feet long, set in excavation made in loam and sand. Monument was set June 11, 1907.

1906 Station 166319
Bound #73 - 729 feet east
Bound #75 - 1,556 feet west



Looking Northerly



Looking Northerly

LINE BOUND #75**STAFFORD - SOMERS TOWN CORNER**

REGULATION GRANITE MONUMENT

INTERIOR TOWN CORNER

From the State Line on Chapin Road, at Bound #74, proceed westerly on line 1,556 feet, N 75° W to the bound. Second growth woodland runs nearly level to a brook at 485 feet and then rises gradually, crossing the southern end of a low ridge, 175 feet east of the bound, to the foot of the steep hillside at the bound.

Bound is located 85 feet west of a brook and about 100 feet north of a prominent ledge outcrop 25 feet high. Undulating woodland to the north, east, and south, and rising woodland to the west.

Bound is marked by a regulation granite monument showing 3.9 feet above the ground. It is lettered "S 1906" on the east face, "S" on the west face, "H Mass" on the north face and "Conn" on the south face. Monument is tipped slightly east. It is 9.6 feet long, set in excavation made in loam, roots, and clay. Monument was set August 5, 1907.

An old town line monument lies 6 feet southeast of the bound.

1906 Station 167875
 Bound #74 - 1,556 feet east
 Bound #75-A -1,162 feet west
 Bound #76 - 2,693 feet west



Looking Easterly



Looking Easterly

LINE BOUND #75-A

DRILL HOLE

INTERIOR INTERMEDIATE POINT

From the State Line on the westerly summit of Rattlesnake Hill, at Bound #76, following sketch, proceed southerly uphill to line fence. Follow line fence easterly 1,255 feet to fence corner at the southeast corner of a birch pasture. Follow intersecting fence north 40 feet to line and proceed easterly on line 290 feet beyond line summit to the bound. Fences mentioned are barbed wire and mostly lying on the ground.

Bound is located in the center of the top of the northern-most outcrop of three rounded ledges, showing about 10 feet east and west by 25 feet north and south, in woodland at the easterly brow of Rattlesnake Hill. Woodland rising slightly to west and descending steeply in other directions.

Bound is marked by a $\frac{3}{4}$ " drill hole, 2" deep, enclosed in a 3 $\frac{1}{2}$ " square cut in the outcropping ledge. The south edge of the drill hole and square are chipped away.

1906 Station 169037
 Bound #75 - 1,162 feet east
 Bound #76 - 1,531 feet west



Aerial View



Looking Northerly

LINE BOUND #76SMALL SANDSTONE MONUMENT
SUMMIT

INTERIOR LINE

From Intersection 752 at Mountain Road and Stafford Road, 3.5 miles northeast of Somers, proceed northwesterly on Stafford Road crossing Rocky Dundee Road at 0.4 miles to intersecting highway north of Perkins Mountain at 1.0 miles. Continue northwesterly on Cook Road to Henry Cook Farm.

Following sketch proceed northeasterly across pastures and cultivated field and follow line fence easterly uphill through woodland to fence summit and drop down northerly 110 feet to line summit and bound.

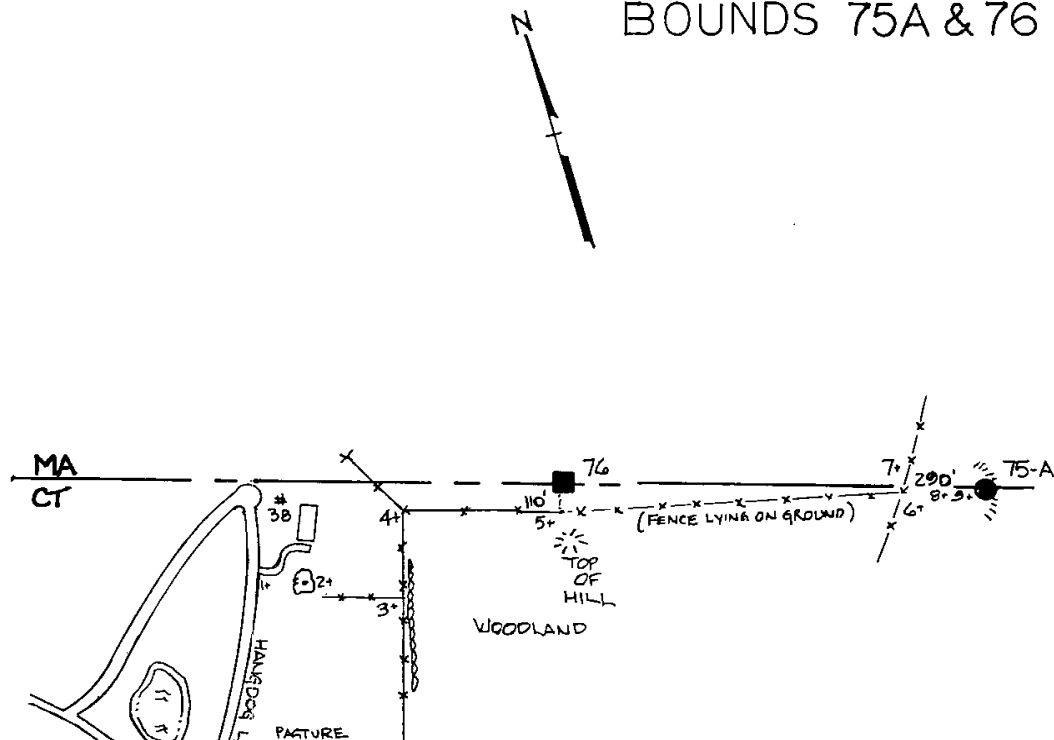
Bound is located in second growth woodland on the north slope of the west peak of Rattlesnake Hill, 110 feet north of the line fence and about 60 feet north of the brow of the steep northerly slope. The absolute summit of the hill is about 80 feet south of the line fence. With line cleared it would see Bound #77-A to the west and for miles to the east.

Bound is marked by a dressed sandstone monument showing 1.8 feet above the ground. It is 5" X 10 inches in section with a 5/8" drill hole 1 1/2" deep in the top and is lettered "M" on the north face and "C" on the south face. Monument is chipped on all top corners and is leaning slightly to the north. It is 5.4 feet long, set in excavation made in loam and 1.7 feet in ledge. Monument was set June 12, 1907.

Triangulation Station "Rattle" is 90 feet south of the bound.

1906 Station 170568
Bound #75- 2,693 feet east
Bound #75-A - 1,531 feet east
Bound #77- 3,065 feet west

BOUNDS 75A & 76



- | |
|---|
| <p>TO BOUND 76</p> <ul style="list-style-type: none"> 1+ South edge Drive @ road - N60°E - 264' 2+ 18" Poplar - S110°E - 331' 3+ Intersect fence & stone wall - N15°E - 264' 4+ Corner of fence at woodland - S70°E - 550' 5+ Fence summit - N20°E - 110' <p>TO BOUND 75A</p> <ul style="list-style-type: none"> 5+ Fence summit - S 75°E - 1255' 6+ Fence corner - N20°E - 40' 7+ Line at fence - S 75°E - 140' 8+ West end line summit - S75°E - 40' 9+ East end line summit - S75°E - 110' |
|---|

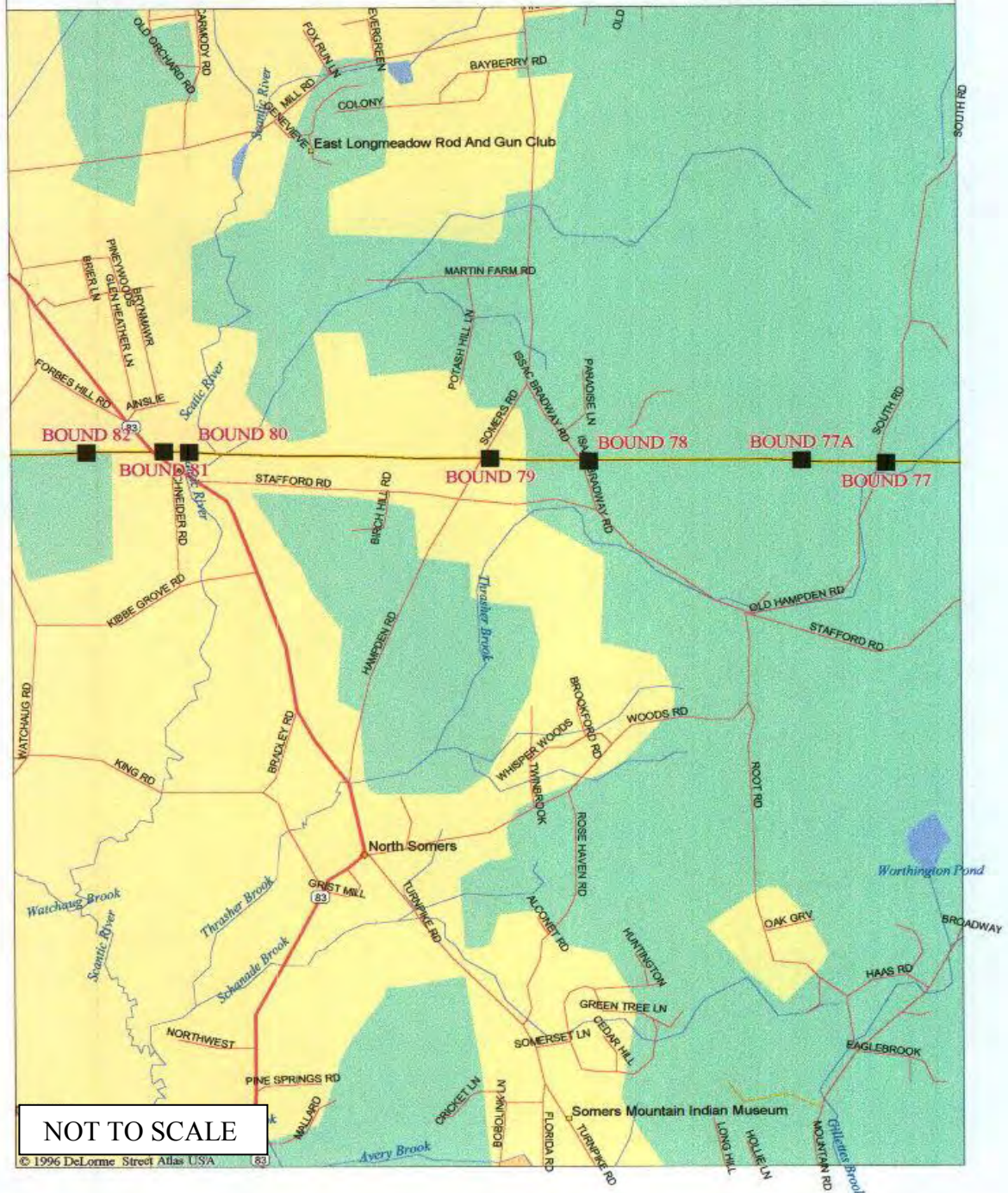


Looking Southerly



Looking Southerly

CT - MA Line Section - M



1997

LINE BOUND #77

REGULATION GRANITE MONUMENT

WOOD ROAD

From Intersection 752 at Mountain Road and Stafford Road, 3.5 miles northeast of Somers, proceed northwesterly on Stafford Road crossing Rocky Dundee Road at 0.4 miles passing north of Perkins Mountain and descending westerly to Intersection 461 at Root Road at 2 miles. Proceed northeasterly and northerly on Old Hampden Road to bound at 2.7 miles. Road runs through heavy woods, following north and west of a brook and comes out with pasture land on the east, 400 feet south of the line, crosses a brook 215 feet south of the bound and rises northerly past the bound.

Bound is located 16 feet east of the center of the traveled way and 3.5 feet west of the center of the easterly road wall. Woodland west of the road slopes to the south. Scrub woodland east of the bound slopes to the south to a brook.

Bound is marked by a regulation granite monument showing 3.9 feet above the ground. It is lettered "1906" on the west face, "H Mass" on the north face and "S Conn" on the south face. Monument is chipped on the northeast top corner. It is 9.5 feet long, set in excavation made in sandy loam. Monument was set June 11, 1907.

1906 Station 173633
 Bound #76 - 3,065 feet east
 Bound #77-A -1,170 feet west
 Bound #78 - 4,583 feet west



Looking Northerly



Looking Northerly

LINE BOUND #77-A

DRILL HOLE

INTERIOR LINE SUMMIT

From the State Line on South Road, at Bound #77, proceed westerly on line 1,185 feet to the bound. Cross scrub to edge of woodland at 270 feet. Proceed up hillside in open woodland, crossing logging roads at 390 feet and 665 feet to a wire fence running north and south at 825 feet. Continue on to second fence, follow fence northwesterly to boulder and bound.

Bound is located at the eastern brow of the summit of a wooded hill which is slightly higher about 150 feet further south and a very little higher about 50 feet further west on the line at the westerly brow of the hill. Woodland which is nearly level to the north and south drops off precipitously to the east and west. With line cleared it would see Bound #76 to the east and Bound #81 to the west.

Bound is marked by a 5/8" drill hole 2" deep enclosed in a 3" square, countersunk in the ledge which is at ground level. It is under a small stone heap erected in 1954.

Bound is referenced as follows:

- 77- A A West 10.32 feet from the bound, a 5/8" drill hole 1" deep, 9" inches north of the south end of the top of a boulder 6' X 3' and 2 1/2' high, resting on the ledge. This is a reference point about on the State Line.
- 77-A B North 3.15 feet from the bound, a 3/4" drill hole 2" deep in the same ledge. This point marks Station 61 on the random line of the 1906 survey. It is under a small heap of stones erected in 1954.

1906 Station 174803
Bound #77 - 1,170 feet east
Bound #78 - 3,413 feet west



Aerial View



Looking Southerly

LINE BOUND #78

REGULATION GRANITE MONUMENT

PAVED HIGHWAY

From the center of the Village of North Somers: proceed northerly on Springfield Road, Route 83, to Intersection 215, at 0.25 mile. Proceed northeasterly on Hampden Road to Intersection 266 at 1.2 miles. Proceed easterly on Stafford Highway to Intersection at 1.6 miles. Proceed northerly on paved highway to bound at 1.75 miles. Highway from the intersection 825 feet south of line runs relatively level to a point opposite the bound where it curves to the west.

Bound is located 16 feet east of the center of Bradway Road in the front lawn of a small frame residence standing 36.5 feet northeast and 31.4 feet southwest of the respective corners of an addition to said residence. There are residences on the west side of the highway also. Bound is 66.2 feet east of the southeast corner of a single family residence on the west side of the road.

Bound is marked by a regulation granite monument showing 4.0 feet above the ground. It is lettered "1906" on the west, "H Mass" on the north and "S Conn" on the south face. The 1985-1986 Perambulation found the Monument to be leaning considerably and may have been broken off below the ground level. The Monument has since been reset in a 2 1/2' X 2 1/2' concrete base. There are chips in the northwest and southwest corners and in the southwest corner. It is 9.6 feet long, set in excavation made in gravel. Monument was originally set June 12, 1907.

1906 Station 178216
 Bound #77 - 4,583 feet east
 Bound #77-A - 3,413 feet east
 Bound #79 - 1,571 feet west



Looking Northerly



Looking Northerly

LINE BOUND #79

REGULATION GRANITE MONUMENT

PAVED HIGHWAY

From the center of the village of North Somers, proceed northerly on Springfield Road, Route 83, to Intersection 215, at 0.25 miles. Proceed northeasterly on Hampden Road to bound at 1.35 miles. After crossing the Stafford Highway at Intersection 266, 700 feet south of the line, highway ascends northerly, gradually, to a high point about 200 feet north of the bound.

Bound is located 27 feet east of the center of Hampden Road at the edge of a white pine plantation, rising to the east. On the west side of the highway there is level pine woods to the north and west, ending 100 feet south of the line. It is opposite a point 15 feet north of the change in pavement.

Bound is marked by a regulation granite monument, showing 3.9 feet above the ground. It is lettered "1906" on the west face, "H Mass" on the north face and "S Conn" on the south face. It is 9.7 feet long, set in excavation made in gravel. Monument was set June 12, 1907.

1906 Station 179787
Bound #78 - 1,571 feet east
Bound #80 - 4,600 feet west



Looking Northerly



Looking Northeasterly

LINE BOUND # 80

HAMPDEN-EAST LONGMEADOW TOWN CORNER

REGULATION GRANITE MONUMENT

INTERIOR TOWN CORNER

From the State Line on Springfield Road Route 83, at Bound #81, proceed easterly on line 474 feet across cultivated land to the bound.

Bound is located in cultivated field sloping down to the east and dropping off to a swale about 75 feet east of the bound.

Bound is marked by a regulation granite monument showing 4.8 feet above the ground. It is lettered "EL 1906" on the west face, "H" on the east face, "Mass" on the north face and "S Conn" on the south face. Monument is chipped on the south face. It is 9.6 feet long, set in excavation made in gravel. Monument was set June 12, 1907.

The west side near the northwest corner has a large chip 1" deep, 7" wide and 3" high, which has removed the top of the letter E. The south side at the southwest corner has a large chip 1" deep, 8" wide, and 3" high.

1906 Station 184387
Bound #79 - 4,600 feet east
Bound #81 - 474 feet west



Looking Westerly



Looking Westerly

ANGLE BOUND #81

REGULATION GRANITE MONUMENT

PAVED HIGHWAY

From the center of the village of North Somers, proceed northerly on Springfield Road, Route 83, to bound at 1.45 miles. Highway curves to the west, just south of the Stafford Highway, crosses the Scantic River, ascends northwesterly, and curves to the north, straightening out opposite the bound.

Bound is lettered "1906" on the west face, "EL Mass" on the north face and "S Conn" on the south face. The monument has a brass plug set in the top. Monument is chipped on the southeast, southwest, and northwest top corners. It is 9.6 feet long, set in excavation made in red gravel. Monument was set June 12, 1907. Monument reset in manhole October 30, 1956.

Bound is located 20 feet east of the center of the traveled way, Route 83, in the shoulder of the road. Bound is 60 feet south of a line fence running northeasterly. A 1 story ranch dwelling is about 100 feet directly west of the bound. Cultivated land slopes off gently to the east and south, and a greenhouse is about 200 feet northeast of the bound. A concrete project marker stands 9 feet east of the bound. A granite boundary stone and a C.H.D. stand 26.7 feet southeast of the bound.

Bound is marked by a regulation granite monument set in a 2 foot diameter manhole. Top of bound is 0.7 feet below surface of the road. The manhole appears to be filling with silt. The heavy cast iron cover has cracked in two pieces and has "Mass., Conn. Bound No. 81" printed on it.

Bound was reset in exact horizontal position by Massachusetts Highway Department, October 30, 1956; checked by Connecticut Highway Department, October 30, 1956.

1906 Station 184861
Bound #80 - 474 feet east
Bound #82 - 1,080 feet west



Aerial View



Looking Northerly

LINE BOUND # 82

SMALL SANDSTONE MONUMENT

INTERIOR LINE

SUMMIT

From the State Line on Route 83 (Springfield Road), at Bound #81, proceed northwesterly on Springfield Road (Route 83) to Intersection 252 at Forbes Hill Road, at 0.15 miles. Proceed northwesterly on Forbes Hill Road to 0.20 miles.

Bound is located in the center of a stonedust surfaced horse racetrack to the rear of "Masconette Farm" house on west side of Forbes Hill Road.

Bound is marked by a dressed sandstone monument showing 1.6 feet above the ground. It is 6" X 9" inches in section and is lettered "M" on the north face and "C" on the south face. It is 5.4 feet long, set in excavation made in sandy loam. Monument was set June 12, 1907.

Monument is badly chipped and weathered, and is broken off 0.3 feet below the ground. Drill hole in top is chipped out around the edges.

1906 Station 185941
Bound #81 - 1,080 feet east
Bound #83 - 1,494 feet west

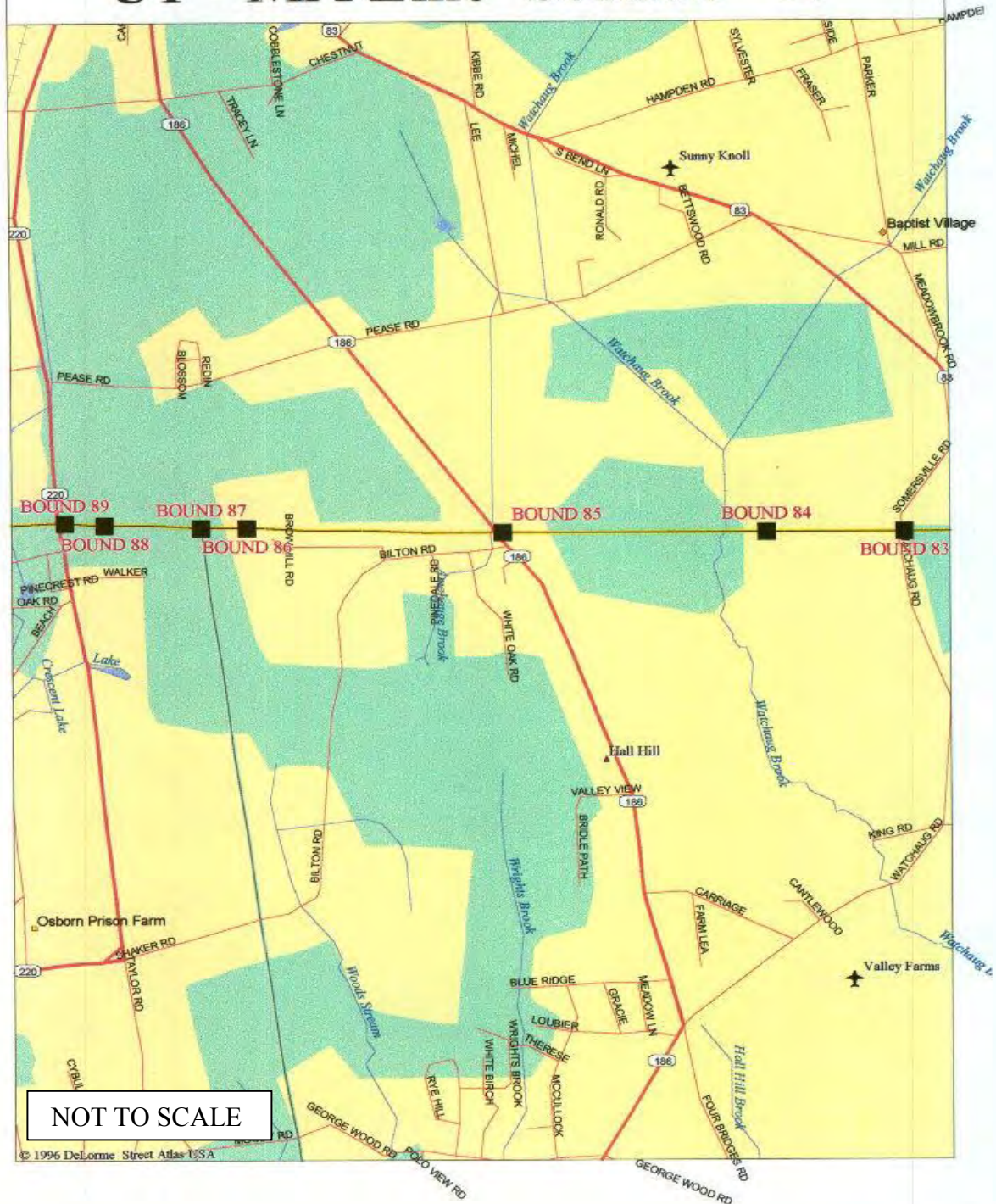


Looking Northeasterly



Looking Northeasterly

CT - MA Line Section - N



1997

LINE BOUND #83

REGULATION GRANITE MONUMENT

PAVED HIGHWAY

From the center of the village of North Somers, proceed northerly on Springfield Road (Route 83), passing Bound #81 at 1.45 miles to Somersville road at 2.0 miles. Proceed on Somersville to bound on east side at 2.55 miles.

Bound is located 13 feet east of the center of the traveled way. It is 23 feet north of a 36" maple and 58 feet north of a line wall to the east, and 44 feet west of utility pole N.E.T.& T. #01. Level cultivated land to the north of the line, and a 1 ½ story brick house south of the line wall. On the west side of the highway there is a golf course (Elmcrest Country Club). There is a 1 1/2 story house to the east.

Bound has been repaired since the 1975 perambulation and is now identified by a brass State Line Boundary Disk set in a 13 ½" X 15" concrete monument which is flush with the ground level. The disk has been stamped "CONN/MASS 83".

1906 Station 187435
Bound #82 - 1,494 feet east
Bound #84 - 1,797 feet west



Aerial View



Looking Southerly

LINE BOUND #84SMALL SANDSTONE MONUMENT
SUMMIT

INTERIOR LINE

From the State Line on King Hill Road, at Bound #83, proceed northerly on King Hill Road, 260 feet to the intersecting farm road. Proceed westerly on farm road about 1,800 feet to tree-lined wall on second low ridge, running north from a short length of stone wall which is the extension of fence along the south side of the farm road. Wall to the north is about 150 feet west of two large white pines at the summit of the road wall.

Bound is located 23 feet south of a point in the line wall, 40 feet east of the intersecting wall to the north, and 75 feet west of the line summit. Undulating cultivated fields in all directions, dropping off to the west to Watchaug Brook.

Bound was marked by a sandstone monument showing 1.4 feet above the ground. It was 6" X 8" in section, with a $\frac{3}{4}$ " drill hole 2" deep, $\frac{3}{4}$ " east of the center of the top, and was lettered "M" on the north face, and "C" on the south face. It was set in excavation made in red gravel. Monument was set June 13, 1907.

On the 1920 perambulation, the monument could not be found and the perambulators, after careful investigation, concluded that it had been removed to facilitate cultivation of the adjacent land. Since it is an insignificant bound, the monument has never been replaced.

1906 Station 189232
Bound #83 - 1,797 feet east
Bound #85 - 4,376 feet west

ANGLE BOUND #85

REGULATION GRANITE MONUMENT

PAVED HIGHWAY

From the Intersection of Route 186 (Hall Hill Road) and Watchaug Road, proceed northerly on Route 186 to bound at 1.7 miles. Road, after descending the northerly slope of Hall Hill and running straight, curves to the west 800 feet south of the bound, passes the Intersection of Bilton Road and is descending northwesterly past the bound with farm buildings on either side of the highway.

Bound is located 18 feet northeast of the center of the traveled way, There is a Subdivision northeast of bound on former farmland and 150 feet southeast of a culvert. Undulating cultivated fields in all directions with farm buildings to the northwest and southeast.

Bound is marked by a regulation granite monument showing 3 feet above the ground. It is lettered "1906" on the west face, "EL Mass" on the north face and "S Conn" on the south face. There are small chips in the southeast and southwest corners. It is 10 feet long, set in excavation made in reddish sandy loam. Monument was set June 13, 1907 in the exact location of the old 1826 sandstone monument.

Monument leans 1" to the west and slightly to the north, but is firmly set.

1906 Station 193608
Bound #84 - 4,376 feet east
Bound #86 - 3,770 feet west



Looking Northwesterly



Looking Northwesterly

LINE BOUND # 86**Destroyed**SMALL SANDSTONE MONUMENT
SUMMIT

INTERIOR LINE

From the State Line on Route 186 (Hall Hill Road), at Bound #85, proceed southerly on Route 186 to Intersection 284 at Bilton Road, at 0.05 miles. Proceed westerly and southerly on Bilton Road to a farm house surrounded by orchards at 0.65 miles.

Following sketch, proceed along farm road south of residence and north to hen house, thence westerly and northerly to bound at 1.1 miles.

Bound was originally located near the south end of the most northerly orchard midway between its east and west sides, on the southerly slope of a hill at the line summit. Orchard was on all sides dropping off to wooded land on the east and west.

Bound was marked by a dressed sandstone monument showing 1.4 feet above the concrete collar. It was 9" X 9" in section with a 5/8" drill hole 1 1/2" deep in the top, and is lettered "M" on the north face and "C" on the south face. It was originally 5.5 feet long, set in excavation made in red gravel. Monument was originally set June 13, 1907.

On the 1940 perambulation, the monument was found broken off at the ground. It was repaired on September 15, 1941, by placing a reinforced concrete collar 18" in section and 2 feet in height around the monument with the top set on the base which remained undisturbed. On the 1952 perambulation, it was found broken off at the top of the concrete collar.

Continued.

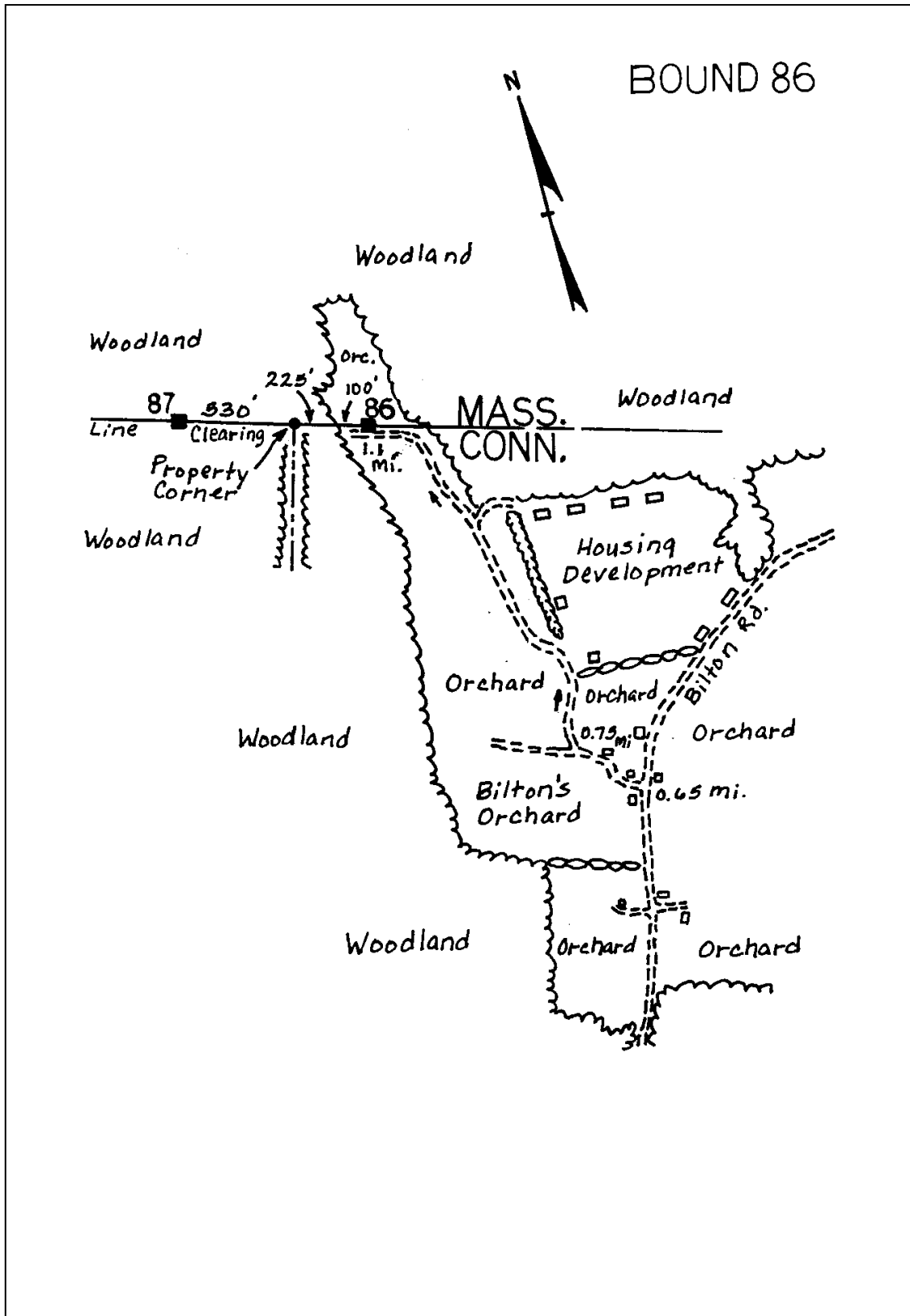
LINE BOUND # 86, continued

On the 1965 perambulation, the monument was found broken off at the original collar 1.4 feet below the top. In March 1966, a survey was run from Monument #85 to Monument #87 to determine the line. In June 1967, Monument #86 was reset on line between Monument #85 and #87.

The monument was repaired by drilling ½" holes in the old base and the broken top. A 3/8" dowel bar 8" long was inserted and concrete was put on base to bind the two sections. A concrete collar 18" in section and 1.5 feet in height was then put around the original collar for support.

The 1997 Perambulation found the Monument lying on its side at the bottom of a debris pile off the west edge of orchard. The property owner stated that the monument was knocked out by a logger.

1906 Station 197378
Bound #85 - 3,769.7 feet east
Bound #87 - 853.9 feet west



1997

CONNECTICUT - MASSACHUSETTS STATE BOUNDARY LINE PERAMBULATION
CONNECTICUT DEPARTMENT OF TRANSPORTATION



Looking Northeasterly

LINE BOUND #87

SOMERS-ENFIELD TOWN CORNER

REGULATION GRANITE MONUMENT

INTERIOR TOWN CORNER

From the State Line on the interior line summit northwest of Bilton Road at Bound #86, proceed westerly on line 325 feet downhill through open woods to State Prison Farm property corner monument. Continue westerly on line 550 feet along line, cutting downhill through woodland to the bound.

Bound is located on the western slope of a wooded hill in a stand of hard woods. Monument is on the north side of a 30' wide east-west cut line, 100' east of the eastern edge of a narrow strip of wooded swamp. Woodland rises to the east and drops off to the west to the swamp.

Bound is marked by a regulation granite monument, painted yellow and showing 3.4 feet above the ground. It is lettered "E 1906" on the west face, "S" on the east face, "EL Mass" on the north face and "Conn" on the south face. There are small chips in the southwest, northwest, and northeast top corners, and large chip in the southeast corner. There are bullet divots on the east face. It is set in excavation made in sandy loam. Monument was set June 13, 1907, 5.17 feet, N 02° 53' W true from the old sandstone town monument which was 5 feet southwest of the bound. The old town monument was not recovered. A 4.5" x 4.5" Connecticut State Prison monument is located 12.4' easterly on line.

1906 Station 198232
Bound #86 -854 feet east
Bound #88 - 1,521 feet west



Looking Easterly



Looking Easterly

LINE BOUND # 88

SANDSTONE MONUMENT

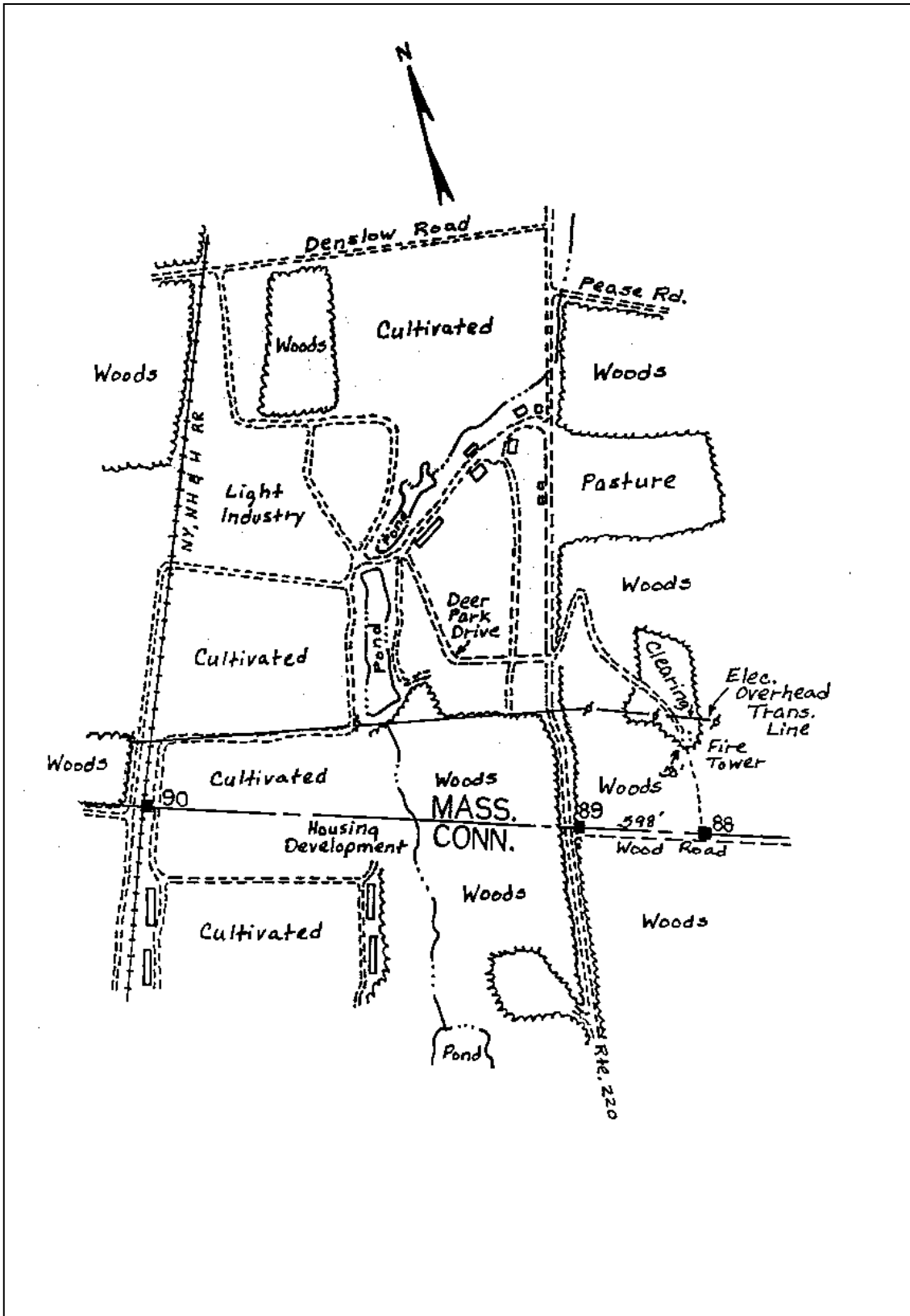
INTERIOR LINE SUMMIT

From the State Line on Route 220 (Shaker Road), at Bound #89, following sketch, proceed easterly on line along wood roads, 598 feet to the bound.

Bound is located on the north edge of the wood road in oak scrub at the line summit near the southerly end of the hill. Woodland slopes down to the east, south, and west, rising slightly to the north.

Bound is marked by a sandstone monument showing 1.5 feet above the ground. It is 12" X 12" square, with a lead plug in top center with a 1/8" drill hole. Monument is crandalled on the top and sides, and is lettered "M" on the north face and "C" on the south face. The letter "C" has been obliterated and there are numerous chips in the southeast, southwest, and northwest top corners. There are 2 large gouges in the top, near center. This monument was set November 16, 1915, in the exact location of a former sandstone monument set June 14, 1907, which was broken in lumbering off the chestnut in 1915.

1906 Station 199753
Bound #87 -1,521 feet east
Bound #89 - 598 feet west



1997

CONNECTICUT - MASSACHUSETTS STATE BOUNDARY LINE PERAMBULATION
CONNECTICUT DEPARTMENT OF TRANSPORTATION



Looking Northerly



Looking Northerly

LINE BOUND # 89

REGULATION GRANITE MONUMENT

PAVED HIGHWAY

From the Intersection of Route 220 (Shaker Road), and Pease Road, proceed southerly on Route 220 to bound at 0.5 miles. The road, after rising gradually, southerly, curves to the east at a summit 300 feet north of the bound and runs straight, descending gradually, southerly, past the bound.

Bound is located 23 feet east of the center of the traveled way. Woodland rises steeply east of the bound. There is a 1 story brick dwelling directly west of the bound on the west side of the highway and a 1 story cinder block building northwest of the bound, also, on the west side.

Bound is marked by a regulation granite monument showing 4 feet above the ground. It is lettered "1906" on the west face, "EL Mass" on the north face, and "E Conn" on the south face. There are chips in all top corners. Monument leans slightly to the east and there is a CHD monument 16.7 feet east of bound. It is 9.8 feet long, set in excavation made in sandy loam. Monument was set June 14, 1907.

1906 Station 200351
Bound #88 - 598 feet east
Bound #90 - 2,019 feet west

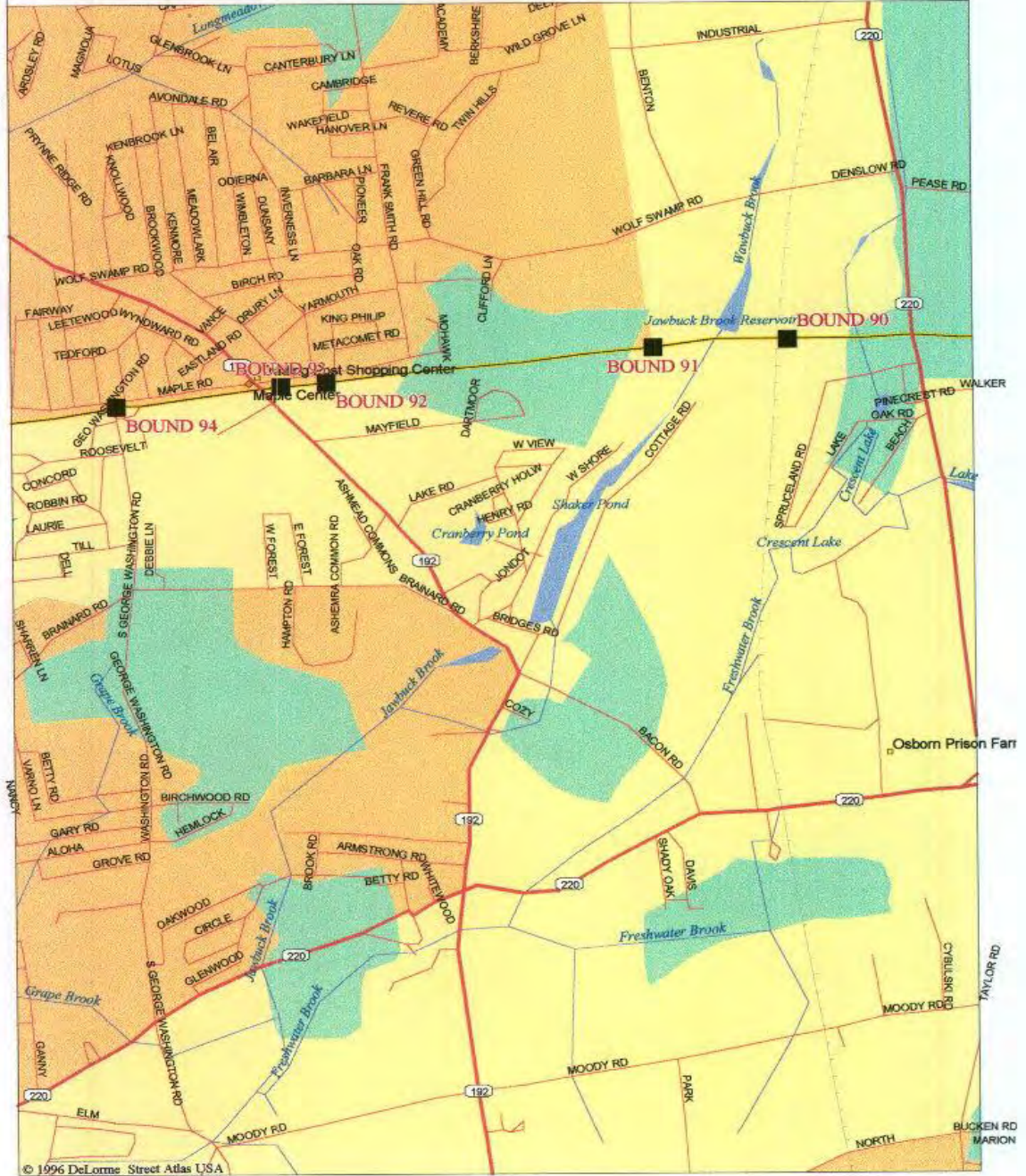


Looking Northerly



Looking Northerly

CT - MA Line Section - O



1997

CONNECTICUT - MASSACHUSETTS STATE BOUNDARY LINE PERAMBULATION
CONNECTICUT DEPARTMENT OF TRANSPORTATION

LINE BOUND # 90

REGULATION GRANITE MONUMENT

RAILROAD

From the State Line on Route 220 (Shaker Road) at Bound #89, proceed northerly to farm settlement at 0.35 miles, about 275 feet south of brook crossing.

Following sketch (page 244), proceed southwesterly on farm roads, crossing dam and driving south along the west side of an irrigation pond, proceeding westerly between fields to railroad and south along railroad to the bound.

Bound is located at the west side of a farm road following the east side of the Springfield Branch of the N.Y., N.H. & H.R.R. It is 258 feet south of the intersection of the overhead electric transmission line poles with the east rail of said railroad and 29 feet east of the east rail. Level cultivated land lies on both sides of the railroad right of way, north and south of the line. A housing development lies off to the southeast along the edge of cultivated fields.

Bound is marked by a regulation granite monument showing 3.05 feet above a concrete base. It is lettered "1906" on the west face, "EL Mass" on the north face, and "E Conn" on the south face. It is 9.5 feet long, set in excavation made in sandy loam and fine dry sand. Monument was set August 29, 1907, at which time it was broken square off at the bottom of the dressed portion. On October 17, 1907, it was repaired with a 5/8" iron dowel 10 inches long cemented into a hole in the vertical axis and encased in a concrete ring 4 1/2 feet in diameter extending from 3 feet below the surface of the ground nearly to the bottom of the letters.

Continued.

LINE BOUND # 90, continued

On the 1965 perambulation, the monument was found broken off at the original collar. In March 1966, a survey was run from monument #89 to monument #91 to determine the line. In June 1967, monument #90 was reset on line between #89 and #91.

The monument was repaired by removing the original collar. In doing this, a 1 foot section of the stone was removed and could not be used. A hole 5/8" in diameter was drilled in the broken top and was set on the original dowel bar. A new concrete collar 2.2 feet in diameter was then poured around the two sections for support.

The second "s" in "Mass" and the second "n" in "Conn" have been covered by the collar. The lower part of the "6" in "1906" has been chiseled out. The monument now shows 2.4 feet above the collar. Overall length of the monument is now 8.5 feet. Monument is leaning to the west and slightly to the south. It is chipped in the southwest corner, in top portion of the west face and bottom northeast corner.

east

1906 Station 202370
Bound #89 - 2,018.8 feet

Bound #91 -1,921.8 feet west



Looking Southerly



Looking Southerly

ANGLE BOUND #91

EAST LONGMEADOW-LONGMEADOW TOWN CORNER

REGULATION GRANITE MONUMENT

INTERIOR TOWN CORNER

From intersection 212 on Route 220 (Shaker Road) at Denslow Road, proceed westerly on Denslow Road, crossing railroad at 0.3 miles to Benton Drive at 0.7 miles.

Following sketch, proceed southerly on remains of farm road opposite Benton Drive, approximately 2,000 feet to woods at south edge of scrub woods. Proceed westerly 100 feet to the bound.

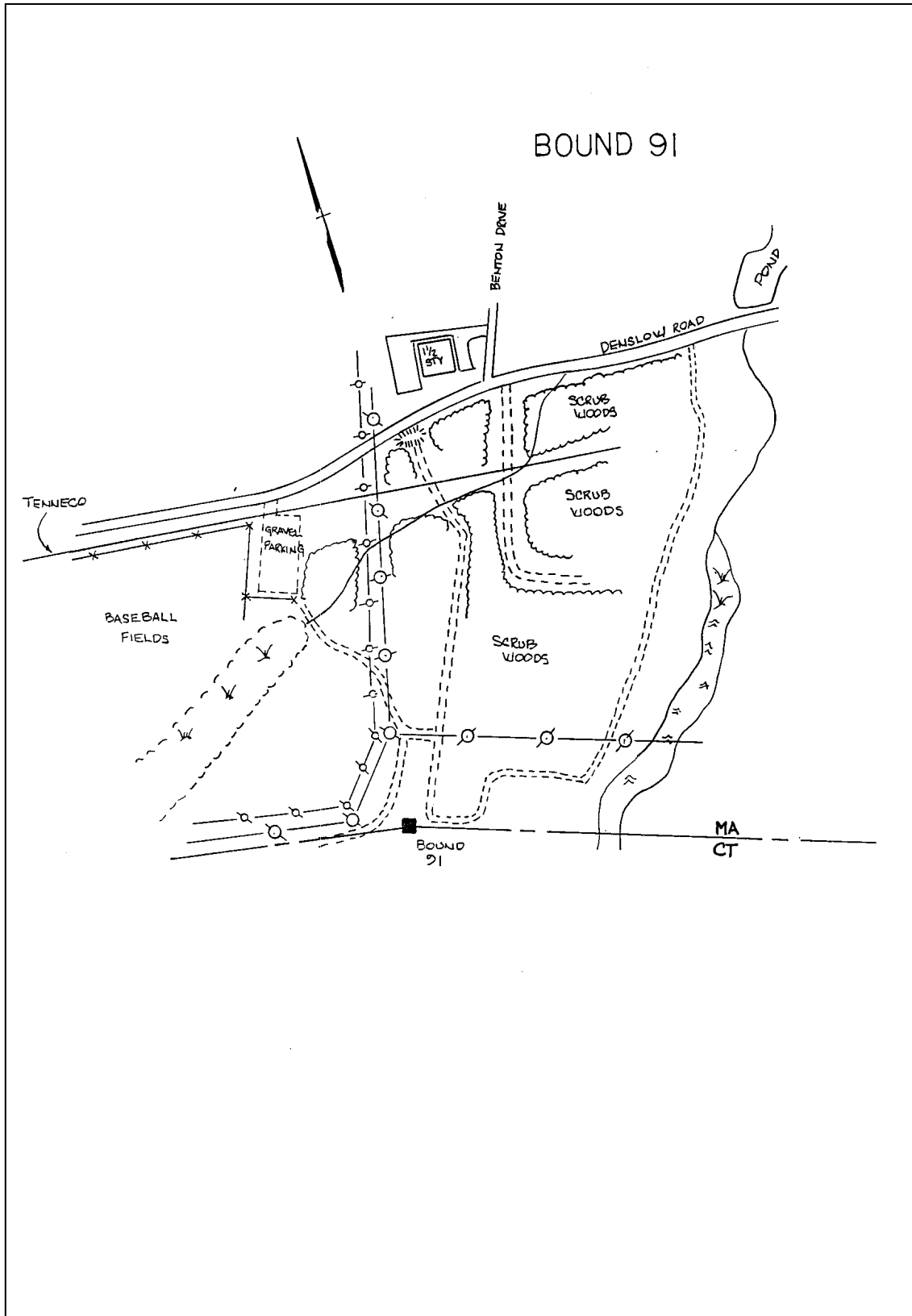
Bound is located against level woodland extending east and west in Connecticut. Angle points in electrical transmission lines are 100 feet west and 200 feet northwest of the bound.

Bound is marked by a regulation granite monument showing 4.1 feet above the ground. It is lettered "EL 1906" on the east face, "L" on the west face "Mass" on the north face, and "E Conn" on the south face. It is 10 feet long, set in excavation made in sand. Monument was set June 14, 1907 in the exact location of the old 1826 sandstone monument.

Bound is leaning north and west, with numerous chips in it and showing signs of abuse. The top of the letter "L" on the west face has been chipped out, and the top of the "M" in "Mass" on the north face has suffered similar damage.

The entire area approaching the bound is littered with trash, debris, garbage, and mounds of earth from bulldozer activity, suggesting a radical change in the area in the near future.

1906 Station 204292
Bound #90 - 1,922 feet east
Bound #92 - 4,950 feet west



1997

CONNECTICUT - MASSACHUSETTS STATE BOUNDARY LINE PERAMBULATION
CONNECTICUT DEPARTMENT OF TRANSPORTATION



Looking Northerly



Looking Northerly

LINE BOUND #92

SANDSTONE MONUMENT

PAVED HIGHWAY

From Bound #93, proceed northerly on Route 192 (North Maple Street), about 200 feet to intersection. From there, turn east on paved Maple Road and proceed to house #887 at 0.2 miles.

Bound is located directly in rear of, or south of, a one story ranch house #887, a distance of 59 feet. Bound is on a 3' bank. There are pine woods to the south, east, and west.

Bound is marked by a rough, weathered, sandstone monument showing 2.5 feet above the ground. It is 10" X 11" in section, tapering to 11" X 7" at the top with a 1/2 inch drill hole, one inch deep in the top, and is lettered "M" on the north face, and "C" on the south face. It is 6.5 feet long, set in excavation made in sand. Monument was set June 15, 1907.

1906 Station 209242
Bound #91 - 4,950 feet east
Bound #93 - 949 feet west



Looking Southerly



Looking Northerly

LINE BOUND #93

REGULATION GRANITE MONUMENT

PAVED HIGHWAY

From intersection 186 at Route 192 (North Maple Street) and Brainard Road, west of Shaker Pond, proceed northwesterly on Route 192 to intersection of Maple Road and bound at 0.9 miles.

Bound is located 21 feet east of the center of the traveled way of Route 192 at the southeast corner of the intersection. Roads and adjacent lands are level in all directions. There is a 1 story brick plaza southeast of the intersection, a gas station southwest of the intersection and 1 story brick housing units opposite the bound. Bound is 9 feet east of the shoulder of Maple Road and 200 feet south of intersection of Route 192 and paved Maple Road.

Bound is marked by a regulation granite monument showing 4 feet above the ground. It is lettered "1906" on the west face, "L Mass" on the north face, and "E Conn" on the south face. It is 9.9 feet long, set in excavation made in sand. Monument is leaning to the east and is chipped on the northeast, southeast and northwest corners, and on the top portion of the west face. The center of the "6" in "1906" has been chipped out. It was set June 15, 1907.

1906 Station 210191
Bound #92 - 949 feet east
Bound #94 - 2,204 feet west



Looking Northerly



Looking Northerly

LINE BOUND #94

REGULATION GRANITE MONUMENT

PAVED HIGHWAY

From the intersection of Route 192 and Maple road in the town of Longmeadow, proceed westerly on Maple road 1.1 miles to Washington road, thence southerly on Washington road 160 feet to bound on west side of road, opposite and just north of entrance to The Meadows Condominiums.

Bound is located 26 feet west of the center of the traveled way of Washington Road. Bound appears to be on a property line in the lawn of a 2 story Cape Cod House, which is 52 feet southwest of the monument. There is wooded land to the east and a 2 story colonial house about 80 feet northwest of the bound.

Bound is marked by a regulation granite monument showing 3.5 feet above the ground. It is lettered "1906" on the west face, "L Mass" on the north face, and "E Conn" on the south face. It is 9.8 feet long, set in excavation made in sand. Bound is leaning north and west and is chipped on the northeast and southeast top corners, and has a 3" x 3" chip out of the north face approx. 1.5 feet down from top. Monument was set June 15, 1907. Monument was reset March 25, 1954, 29.99 feet on line, west of original location.

1906 Station 212365
 1954 Station 212395
 Bound #93 - 2,204 feet east
 Bound #95 - 3,207 feet west

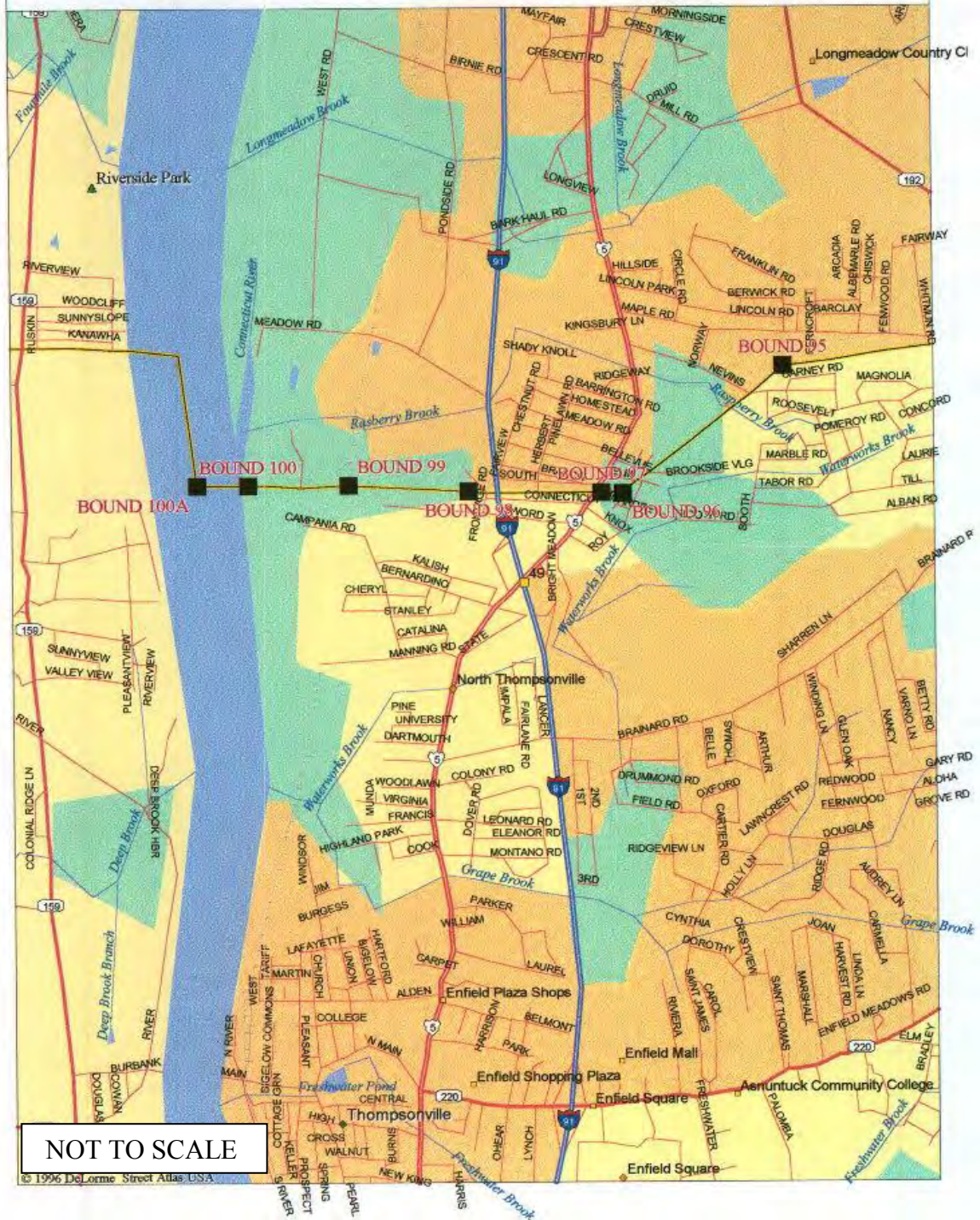


Looking Northerly



Looking Northerly

CT - MA Line Section - P



1997

CONNECTICUT - MASSACHUSETTS STATE BOUNDARY LINE PERAMBULATION
CONNECTICUT DEPARTMENT OF TRANSPORTATION

ANGLE BOUND #95

REGULATION GRANITE MONUMENT

INTERIOR ANGLE

From the State Line on Route U.S. 5 (Enfield Street) at Bound #97, proceed northerly on Route 5 to Maple Road, at 0.6 miles. Proceed easterly on Maple Road to entrance to "Greenwood Park Elementary School" opposite residence no. 232, at 1.0 miles.

Proceed southerly to the southwest corner of the school. From southwest corner proceed 48 feet to the bound.

Bound is located in rear yard of a 1 story ranch house, 1 foot south of an anchor fence. There are houses to the east and school playground to the west.

Bound is marked by a regulation granite monument showing 3.9 feet above the ground. It is lettered "1906" on the west face, "L Mass" on the north face, and "E Conn" on the south face. It is 10 feet long, set in excavation made in loam and quicksand. Bound is leaning slightly north and has multiple chips out of the top and face areas. Monument was set June 15, 1907 in the exact location of the old 1826 sandstone monument.

1906 Station 215602
Bound #94 - 3,207 feet east
Bound #96 - 3,238 feet west



Looking Northerly



Looking Northerly

ANGLE BOUND #96

REGULATION GRANITE MONUMENT

PAVED HIGHWAY

From the intersection of Route U.S. 5 (Enfield Street) and Booth Road, at Bound #97, proceed easterly about 400 feet on Booth Road to residence no. 9, a small shingle house on the north side of the road.

Bound is located 12 feet west of the southwest corner of the house on the edge of the driveway. It is also 20 feet east of the southeast corner of residence no. 7, on range with the front wall of the house.

Bound was marked by a regulation granite monument showing 3.7 feet above the ground. It was lettered "1906" on the west face, "L Mass" on the north face, and "E Conn" on the south face. It was 9.6 feet long, set in excavation made in sand. Monument was originally set June 15, 1907 in the exact location of the old 1826 sandstone monument.

In July of 1969, the District #1 Boundary Office was notified that Bound #96 was broken.

It was found that the exposed 3.5 feet was broken off at ground level. It is not known how this occurred. With the break being clean, the two halves were exactly joined making it possible to tie in the drill hole in the top section. (See Field Book #749, Page 16).

Continued

ANGLE BOUND # 96, continued

The repair was accomplished by first breaking an additional one foot of granite off of the section in the ground. A concrete collar approximately 1.3' x 1.3' x 1.0' deep was poured on top of the base of the stone to ground level and backfilled with sand. The concrete cap is chipped.

A bronze disc with the words "State Line Bound" was inserted in the concrete slightly to the west of center. The word "Mass" and "69" are scribed in the concrete, but not clearly legible. Using the ties mentioned above, a drill hole was put in the disc at the point on the State Line.

The bound is currently in the center of a bituminous residential driveway, approximately flush and sees bound #97.

The top 3.5' section of stone is being stored at the East Hartford Highway Garage.

Connecticut Coordinate Grid
X 645,476.89
Y 434,125.03

1906 Station 218840
Bound #95 – 3,238 feet east
Bound #97– 422.44 feet west



Aerial View



Looking Southerly

LINE BOUND # 97**CONCRETE MONUMENT****PAVED HIGHWAY**

Bound is located at the southeast corner of the intersection of Route U.S. 5 (Enfield Street) and Booth Road, in southern Longmeadow.

Bound is located on the east side of Route U.S. 5 in the amesite driveway 76 feet west of the northwest corner of a 2 bay brick building Longmeadow Motor Cars. It is 54.6 feet southeast of the centerline of Route U.S. 5 and 65.5 feet southwest of the centerline of Booth Road.

Bound is marked by a concrete cap on the base of the original monument, the top of which was broken off. On November 18, 1926, the broken base was drilled, a one-half inch steel rod set in the hole and the monument was built up with concrete 12 inches square. The top of the rod marks the center of the base. Subsequently, an additional 14 inch by 16 inch square concrete cap, with a copper tube in the center, was extended to the grade. The original top has been moved to the rear of the adjacent buildings. A new concrete cap has been inscribed with the words "MASS & CONN", shows signs of abuse and is 6" below grade. Bound is 2.5 feet northwest of concrete sidewalk.

Connecticut Coordinate Grid
X 645,054.56
Y 434,134.49

1906 Station 219262
Bound #96 - 422.44 feet east
Bound #98 -1,952.83 feet west



Aerial View



Looking Northerly

LINE BOUND #98SMALL SANDSTONE MONUMENT
SUMMIT

INTERIOR LINE

From the State Line on Route U.S. 5 (Enfield Street) at Bound #97, proceed southerly on Route U.S. 5 to Sword Avenue, at 0.1 miles. Proceed westerly on Sword Avenue to west side of overpass (1-91) at 0.35 miles. Immediately beyond overpass turn northerly on black top road. Proceed northerly about 300 feet to private road, "Sunset Lane." Road curves sharply west. Proceed west 50 feet beyond curve, then south along east side of 1 story cinder block house # 29 with a wood frame addition in rear to the bound.

Bound is located 8.5 feet southeast of the 1 story frame addition to the residence in its south yard. It is about 200 feet west of the west side highway fence (1-91). It is currently in a fence enclosure which appears to be used as a dog kennel.

Bound is marked by a sandstone monument showing 1.3 feet above the ground. It is 8" X 9" in section with a 5/8" drill hole 1 1/2" deep in the top, lettered "M" on the north face, and "C" on the south face, with a rough cut "R" on the east face. All four corners have been chipped away such that monument top is now rounded. It is 4.5 feet long, set in excavation made in sandy gravel. Monument was set June 15, 1907.

Connecticut Coordinate Grid
X 643,102.22
east
Y 434,177.90

1906 Station 221215
Bound #97-1,952.83 feet
east
Bound #99 - 2,019 feet west



Looking Westerly



Looking Northerly

LINE BOUND #99

REGULATION GRANITE MONUMENT

RAILROAD

From the State Line on Route U.S. 5 (Enfield Street), at Bound #97, proceed southerly on Route U.S. 5 to Bernardino Avenue, at 0.45 miles.

Following sketch, proceed westerly and northerly on farm roads, as far as railroad tracks. Proceed northerly along railroad right of way, 875 feet to the bound.

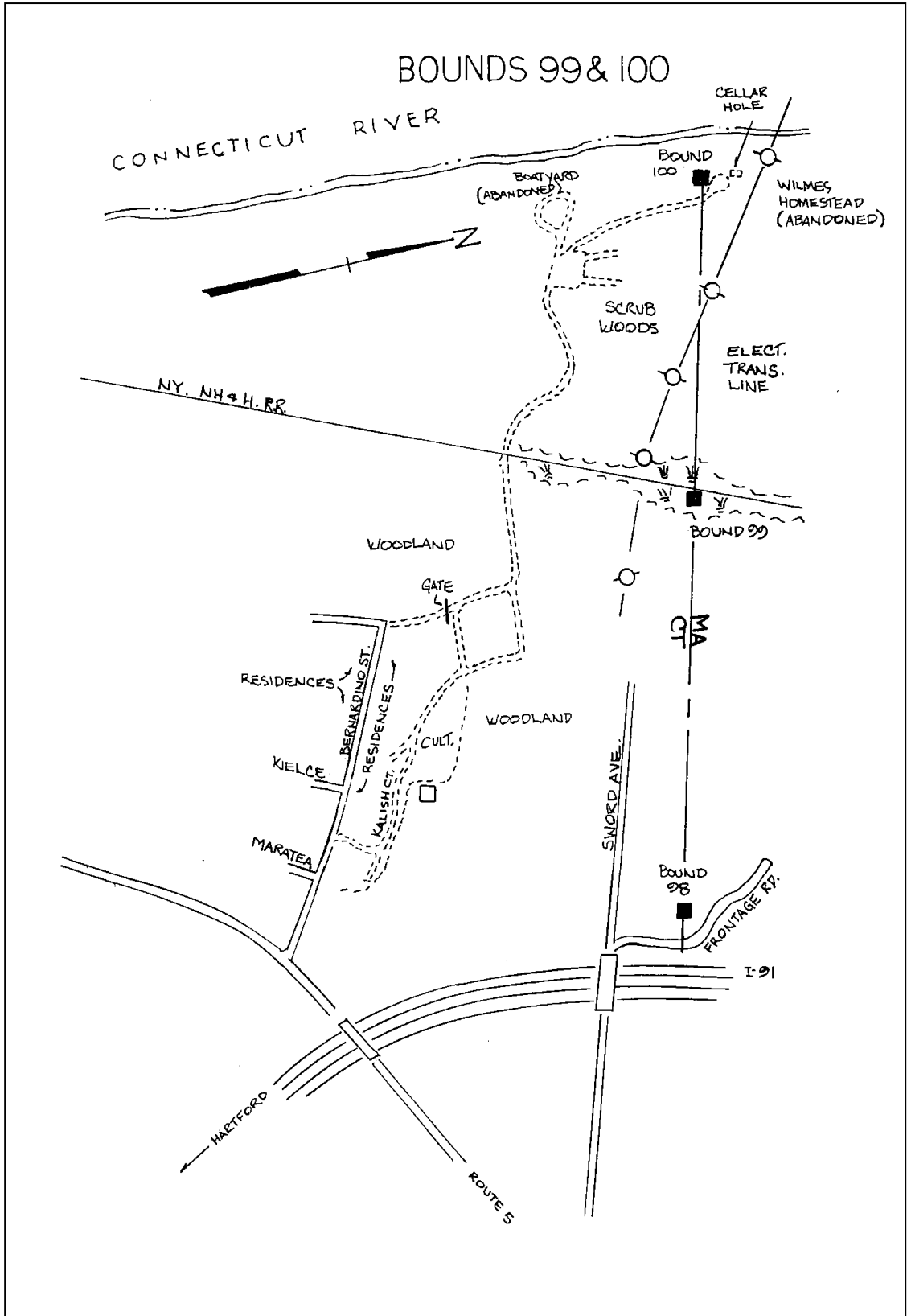
Bound is located 23 feet east of the east rail of the northbound track of the main line of the New York, New Haven, and Hartford Railroad. Bound is surrounded by swampy land which lies along both sides of the right of way, with wooded land beyond the swamps. Bound is also 45 feet north of an overhead electrical transmission line where it intersects the center of the railroad right of way.

Bound is marked by a regulation granite monument showing 4 feet above the ground and painted white. It is lettered "1906" on the west face, "L Mass" on the north face, and "E Conn" on the south face. It is 9.8 feet long, set in excavation made 1 foot in peat and 2.5 feet in soft clay, on a foundation of five 8" X 8", 5 1/2 foot yellow pine bridge timbers laid north and south, and four more laid east and west above, and drift bolted to them with a fill of three carloads of gravel forming a mound around the stone. There is a chiseled square on the northwest top corner and all top corners are chipped. Monument was set September 4 and November 2, 1907.

Station 223234

Bound #98 - 2,019 feet east

Bound #100 - 1,440 feet west



1997



Looking Northeasterly



Looking Northeasterly

LINE BOUND #100

ENFIELD-SUFFIELD TOWN CORNER - WITNESS MARK

REGULATION GRANITE MONUMENT

FARM ROAD

From the State Line on Route U.S. 5 (Enfield Street) at Bound #97, proceed southerly on Route U.S. 5 to Bernardino Avenue, at 0.45 miles.

Following sketch, proceed westerly and northerly on farm roads. At fork, just east of remains of a boat yard, turn north to the remains of the Wilmes Homestead.

Bound is located 42 feet south of the southeast corner of the foundation of the remains of the Wilmes Homestead on range of its east face. It is 30 feet east of the river bank, 175 feet east of the east shore of the Connecticut River and 450 feet south of Transmission Lines. Homestead clearing is surrounded by woodland.

Bound is a witness mark for the angle and town corner at Bound #100-A in the center of the river.

Bound is marked by a regulation granite monument showing 3.9 feet above the ground. It is lettered "1906" on the east face, "L Mass" on the north face, and "E Conn" on the south face. It is 9.4 feet long, set in excavation made in sand, its bottom resting on rock. Bound is leaning slightly south and west, and is chipped on the southwest, northwest, and northeast top corners, and also chipped on the northwest corner. The center portion of the letter "A" in "Mass" has been chipped out. There is a punched brass plug in the drill hole. Monument was set June 15, 1907, in the exact location of the old 1826 sandstone monument.

1906 Station 224674
Bound #99 -1,440 feet east
Bound#100-A - 950 feet west



Looking Northerly



Looking Northwesterly

Appendix A

Connecticut General Statutes Section 3-8

Sec. 3-8. Restoration and repair of state boundary marks. The governor shall, in 1975 and decennially thereafter, or whenever any monument or other boundary mark between this state and an adjoining state has become damaged, displaced or destroyed, appoint an agent authorized to act with a duly appointed agent of such adjoining state to examine any or all of such monuments and boundary marks and restore or repair any that are injured or have been removed; and a reasonable portion of the expense thereof, together with the cost of the services of such agent, when approved by the governor, shall be paid from the state treasury. Such agent or his representative may, upon giving reasonable written notice to the owner, enter upon private property for the purpose of surveying, establishing, maintaining or restoring any state boundary mark or monument and shall use care so that no unnecessary damage shall result to such private property, and the state shall pay damages to the owner of any such property, from appropriations made to the department of transportation for any damage or injury such agent or his representative causes such owner by such entry and activity.

Appendix B

SPECIAL LAWS OF CONNECTICUT 1911, 1913

VOLUME 16 - PAGES 1003-1005

SENATE BILL #310 & #330

AN ACT ESTABLISHING THE BOUNDARY LINE BETWEEN CONNECTICUT AND MASSACHUSETTS.

Be it enacted by the Senate and House of Representatives in General Assembly convened:

SECTION 1. The boundary line between the State of Connecticut and the commonwealth of Massachusetts, from the northwest corner of Rhode Island to the northwest corner of Connecticut, is as follows: Beginning at a granite monument at the northwest corner of the State of Rhode Island and marking the corner of Massachusetts, Rhode Island, and Connecticut, in latitude $42^{\circ} 00' 29.150''$ and longitude $71^{\circ} 47' 58.778''$; thence north $2^{\circ} 56' 41''$ west, 2,795 feet to a granite monument on the northerly side of the old turnpike from Hartford to Boston through Thompson and Douglas, in latitude $42^{\circ} 00' 56.728''$ and longitude $71^{\circ} 48' 00.680''$; thence north $5^{\circ} 13' 32''$ west, 2,854 feet to a granite monument at the northeast corner of the State of Connecticut, in latitude $42^{\circ} 01' 24.807''$ and longitude $71^{\circ} 48' 04.123''$; thence north $89^{\circ} 09' 56''$ west, 27,908 feet to a granite monument on the westerly side of the Webster Road, opposite the "Line Hotel", in latitude $42^{\circ} 01' 28.656''$ and longitude $71^{\circ} 54' 13.830''$; thence north $87^{\circ} 52' 26''$ west, 22,881 feet to a granite monument on the easterly side of the road from East Woodstock to Southbridge, in latitude $42^{\circ} 01' 36.931''$ and longitude $71^{\circ} 59' 16.780''$; thence north $89^{\circ} 17' 16''$ west, 22,890 feet to a granite monument on the easterly side of the Forge Road from Woodstock Valley to Southbridge, in latitude $42^{\circ} 01' 39.631''$ and longitude $72^{\circ} 04' 20.037''$; thence north $86^{\circ} 52' 14''$ west, 19,423 feet to a granite monument on the easterly side of the main road from Mashapaug to Holland, in latitude $42^{\circ} 01' 50.026''$ and longitude $72^{\circ} 08' 37.006''$; thence north $89^{\circ} 17' 26''$ west, 53,162 feet to a granite monument on the easterly side of the

road from Stafford to Monson by the east base of Peaked Mountain, in latitude $42^{\circ} 01' 55.929''$ and longitude $72^{\circ} 20' 21.364''$; thence north $87^{\circ} 56' 26''$ west, 4,029 feet to a granite monument on the easterly side of the road from Stafford to Hampden, in latitude $42^{\circ} 01' 57.356''$ and longitude $72^{\circ} 21' 14.722''$; thence north $89^{\circ} 11' 30''$ west, 10,377 feet to a granite monument on the easterly side of the road from Stafford to Hampden by the east base of Rattlesnake

Mountain, in latitude $42^{\circ} 01' 58.799''$ and longitude $72^{\circ} 23' 32.206''$; thence north $88^{\circ} 23' 38''$ west, 18,542 feet to a granite monument on the easterly side of the road from North Somers to East Longmeadow, in latitude $42^{\circ} 02' 03.840''$ and longitude $72^{\circ} 27' 37.808''$; thence south $89^{\circ} 39' 56''$ west, 8,747 feet to a granite monument on the easterly side of the Hall Hill Road from Somers to East Longmeadow, in latitude $42^{\circ} 02' 03.319''$ and longitude $72^{\circ} 29' 33.716''$; thence north $89^{\circ} 16' 52''$ west, 10,684 feet to a granite monument at the corner of the Towns of East Longmeadow and Longmeadow in Massachusetts and Enfield in Connecticut, in latitude $42^{\circ} 02' 04.619''$ and longitude $72^{\circ} 31' 55.276''$; thence south $81^{\circ} 56' 34''$ west 11,309 feet to a granite monument about 620 feet south of Allen Street in Longmeadow, in latitude $42^{\circ} 01' 48.933''$ and longitude $72^{\circ} 34' 23.644''$; thence south $51^{\circ} 56' 28''$ west, 3,238 feet to a granite monument 450 feet east of the main road from Thompsonville to Springfield, in latitude $42^{\circ} 01' 29.212''$ and longitude $72^{\circ} 34' 57.422''$; thence north $88^{\circ} 35' 49''$ west, 5,834 feet to a granite monument on the top of the bank, about 175 feet east of the easterly shore of the Connecticut River, in latitude $42^{\circ} 01' 30.616''$ and longitude $72^{\circ} 36' 14.696''$; thence in the same direction, 950 feet to the middle of said river; thence northerly along a line midway between the banks thereof, about 2,075 feet; thence north $87^{\circ} 18' 55''$ west, 1,260 feet to a granite monument standing on the bank about 225 feet west of the westerly shore of the river, in latitude $42^{\circ} 01' 51.983''$ and longitude $72^{\circ} 36' 44.913''$; thence in the same direction, 7,661 feet to a granite monument about 375 feet west of North Street or Suffield Street, the middle road from Suffield to Springfield, in latitude $42^{\circ} 01' 55.516''$ and longitude $72^{\circ} 38' 26.318''$; thence north $82^{\circ} 39' 40''$ west, 8,966 feet to a granite monument on the easterly side of Halliday Avenue or Front Street the road from Suffield to Feeding Hills, in latitude $42^{\circ} 02' 06.813''$ and longitude $72^{\circ} 40' 24.149''$; thence north $84^{\circ} 51' 12''$ west, 7,202 feet to a granite monument on the easterly side of West Street, the road from West Suffield to Westfield, in latitude $42^{\circ} 02' 13.185''$ and longitude $72^{\circ} 41' 59.207''$; thence south $89^{\circ} 46' 25''$ west, 4,137 feet to a granite monument at the corner of Agawam and Southwick in Massachusetts and Suffield in Connecticut, in latitude $42^{\circ} 02' 13.019''$ and longitude $72^{\circ} 42' 54.032''$; thence south $0^{\circ} 48' 01''$ east, 132 feet to a granite monument, in latitude $42^{\circ} 02' 11.716''$ and longitude $72^{\circ} 42' 54.008''$; thence south $89^{\circ} 38' 09''$ west, 11,231 feet to a granite monument on the easterly shore of Congamond Lake, in latitude $42^{\circ} 02' 10.984''$ and longitude $72^{\circ} 45'$

22.830"; thence in the same direction, 14.5 feet to the shore of the lake as it would be with the surface of the water at the elevation it was in 1803; thence southerly, by the easterly shore of the lake as it would be with the surface of the water at the aforesaid elevation to a point opposite a granite monument near the

shore at the southerly end of the lake (The elevation of the water surface of the lake in 1803 has been determined to be one foot below the top surface of the southwest corner of the brownstone foundation, or footing of the north abutment of the arched culvert carrying the tracks of the New York, New Haven, and Hartford Railroad Company over the outlet of the lake about 900 feet north of Congamond Lake Railroad Station.); thence south $4^{\circ} 26' 29''$ west, about 25 feet to said monument, in latitude $42^{\circ} 00' 27.957''$ and longitude $72^{\circ} 46' 00.167''$; thence in the same direction, 1,632 feet to a granite monument at the southeasterly corner of the "Southwick Jog", in latitude $42^{\circ} 00' 11.881''$ and longitude $72^{\circ} 46' 01.841''$; thence south $81^{\circ} 33' 28''$ west, 13,827 feet to a granite monument at the southwesterly corner of the "Southwick Jog", in latitude $41^{\circ} 59' 51.787''$ and longitude $72^{\circ} 49' 02.976''$; thence north $3^{\circ} 33' 56''$ east, 14,261 feet to a granite monument known as the "Crank Monument", in latitude $42^{\circ} 02' 12.399''$ and longitude $72^{\circ} 48' 51.223''$; thence north $88^{\circ} 46' 28''$ west, 16,177 feet to a granite monument about 325 feet east of the west road from Granby to Granville in latitude $42^{\circ} 02' 15.762''$ and longitude $72^{\circ} 52' 25.548''$; thence south $89^{\circ} 48' 02''$ west, 17,833 feet to a granite monument on the easterly side of the road near the east bank of Hubbard Brook, in latitude $42^{\circ} 02' 15.081''$ and longitude $72^{\circ} 56' 21.859''$; thence north $88^{\circ} 32' 56''$ west, 26,579 feet to a granite monument on the easterly side of the road near the west bank of Slocum Brook, in latitude $42^{\circ} 02' 21.580''$ and longitude $73^{\circ} 02' 13.967''$; thence north $87^{\circ} 33' 48''$ west, 26,817 feet to a granite monument on the westerly side of the road near the westerly bank of Sandis Brook, in latitude $42^{\circ} 02' 32.691''$ and longitude $73^{\circ} 08' 09.034''$; thence north $87^{\circ} 52' 12''$ west, 26,698 feet to a granite monument on a large rock near the westerly bank of a brook about 300 feet south of its mouth at Whiting River near Campbell Falls, in latitude $42^{\circ} 02' 42.342''$ and longitude $73^{\circ} 14' 02.615''$; thence north $87^{\circ} 35' 41''$ west, 28,917 feet to a granite monument near the easterly bank of the Housatonic River, in latitude $42^{\circ} 02' 54.154''$ and longitude $73^{\circ} 20' 25.540''$; thence north $88^{\circ} 07' 02''$ west, 25,250 feet to a granite monument on a large rock marked 1803 on its southerly side, in Sage's Ravine, in latitude $42^{\circ} 03' 02.214''$ and longitude $73^{\circ} 26' 00.030''$; thence south $88^{\circ} 31' 58''$ west, 14,787 feet to a granite monument at the northwesterly corner of the State of Connecticut and marking the corner of

Massachusetts, New York, and Connecticut, in latitude 42° 02' 58.427" and longitude 73° 29' 15.959".

SEC. 2 The geodetic positions given in this description are based on Clark's Spheroid and the Astronomical Data adopted by the United States Coast and Geodetic Survey in 1880.

SEC. 3 The above-described boundary line is shown on plans dated December 26, 1906, deposited with the librarian of the State of Connecticut and with the Secretary of the State of Massachusetts, with additional copies filed with the Secretary of the State of Connecticut and the Harbor and Land Commissioners of the State of Massachusetts.

SEC. 4 The Governor is authorized and requested to transmit a copy of this act to the Governor of the State of Massachusetts, and upon receiving acknowledgment of its receipt by the State of Massachusetts, the Governor shall cause such acknowledgment to be filed in the Office of the Secretary.

ACKNOWLEDGEMENTS

DEPARTMENT OF TRANSPORTATION DISTRICT II SURVEYS

CHARLES PANTELEAKOS, P.E.
DISTRICT ENGINEER

WILLIAM S. GIRARD
PRINCIPAL ENGINEER (SURVEYS)

RIGHT OF WAY SECTION

JOSEPH C. CASAVECCHIA, L.S.
SUPERVISOR

DAVID R. GOSSELIN, L.S.I.T.
ROBIN S. THOMPSON
REPORT PREPARATION, GRAPHICS & FIELD WORK

CHRISTINE E. AUBREY, L.S.
GRAPHICS, RESEARCH & FIELD WORK

THOMAS BENOIT
JOEL DILLIS
FIELD WORK

1997
CONNECTICUT-MASSACHUSETTS
STATE BOUNDARY LINE PERAMBULATION
CONNECTICUT DEPARTMENT OF TRANSPORTATION