

*1997*  
**CONNECTICUT - MASSACHUSETTS  
BOUNDARY LINE PERAMBULATION  
BOUNDS 1 - 100**



*Prepared by*  
**CONNECTICUT DEPARTMENT OF TRANSPORTATION  
SURVEY OPERATIONS  
(DISTRICT II)**



# ***CONNECTICUT - MASSACHUSETTS STATE LINE PERAMBULATION SURVEY***

## ***Introduction & Description of Work***

Pursuant to Section 3-8 of the Connecticut General Statutes (Appendix A), the Connecticut – Massachusetts State Line Perambulation Survey has been performed by the Connecticut Department of Transportation. This report represents the portion of this survey traditionally completed by District 2 Surveys. The scope of work covered by this report extends from the northwest corner of Rhode Island (Tri-State Bound 1) northerly to the northeast corner of Connecticut (Bound 5); thence westerly to the Connecticut River in Enfield, Connecticut (Bound 100).

Using the written description from the previous (1986) Perambulation Survey, each bound was visited. The current condition of the bound and its immediate surroundings were noted. The descriptions were revised as necessary and any radical changes were more particularly described.

General notes on the written descriptions for each bound are as follows:

Descriptions have been prepared on the basis of approaching each bound as closely as possible by vehicle. All mileage's have been checked in the field, but are approximate.

All dimensions in the description, used to approach or find the monuments, are "over the ground" distances.

All geographic positions are referred to the 1927 North American Datum, as computed by the U.S.C. & G.S..

All information on bounds was obtained from 1907 descriptions with modifications noted in revisions made on subsequent perambulations.

In referring to highway route number and road names in the descriptions, the route numbers and road names shown on the town road maps accompanying the descriptions have been used.

The 1906 stations have been revised to reflect the current locations of any bounds that have been reset or replaced.

## *Description of Work, continued*

Bounds with remote locations are additionally shown on sketches. Some of these sketches include a more particular description of the route from the vehicle or roadway to the bound using approximate directions and distances at described stations. These compass bearing/distance courses were followed during the current survey and appropriate changes, corrections and additions were made.

Two photographs of each bound were taken when the bounds were visited, using 35mm color film. The photographs were developed with both standard prints and digital disk copy.

### *Report Preparation*

This report was assembled using Microsoft Word 97 software. The written description portion of the report was scanned from the previous perambulation report and run through optical character recognition software to make them live text documents for inclusion in the word processing report. The descriptions could then be revised as necessary without complete retyping. The sketches were first manually revised as needed and then scanned and inserted into Microsoft Word 97.

The digital photographs were stored as separate files and inserted into the word processing document. They were labeled and included within the report. Index maps were produced using Delorme Street Atlas USA 4.0 software. These key maps were labeled, stored separately and later collated into the report.

Copies of this report were transferred to CD-ROM format to expedite future revisions. The CD-ROM will accompany the official distribution of this report.

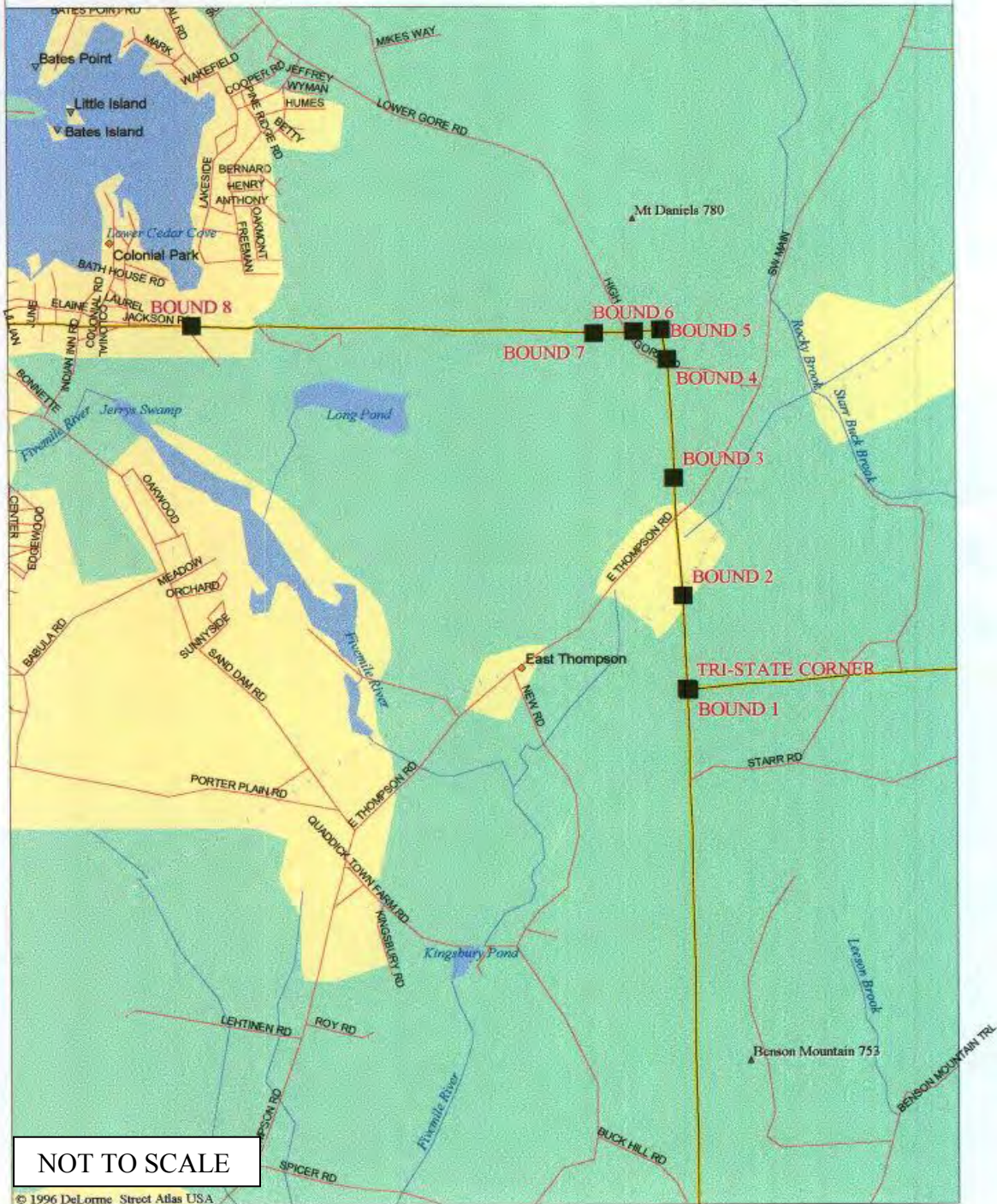
## Index

<u>Section</u>	<u>Bounds</u>	<u>Town</u>	<u>Pages</u>
A	1-8	Thompson	1-19
B	9-15	Thompson	20-38
C	16-21	Thompson	39-56
D	22-30	Thompson-Woodstock	57-76
E	31-35A	Woodstock	77-91
F	36-40	Woodstock	92-108
G	40A-47	Woodstock-Union	109-131
H	48-52	Union	132-143
I	52A-57	Union-Stafford	144-160
J	58-62	Stafford	161-176
K	63-70	Stafford	177-199
L	71-76	Stafford-Somers	200-215
M	77-82	Somers	216-230
N	83-89	Somers-Enfield	231-247
O	90-94	Enfield	248-260
P	95-100A	Enfield	261-275

**Appendix A** - Connecticut General Statutes Section 3-8 (Restoration and repair of State Boundary Marks)

**Appendix B** - Special Laws of Connecticut 1911,1913 Volume 16 – Pages 1003-1005. Senate Bill #310 & #330 (An act establishing the boundary line between Connecticut and Massachusetts)

# CT - MA Line Section - A



**ANGLE BOUND # 1**

## TRI-STATE CORNER

## GRANITE MONUMENT

## INTERIOR ANGLE

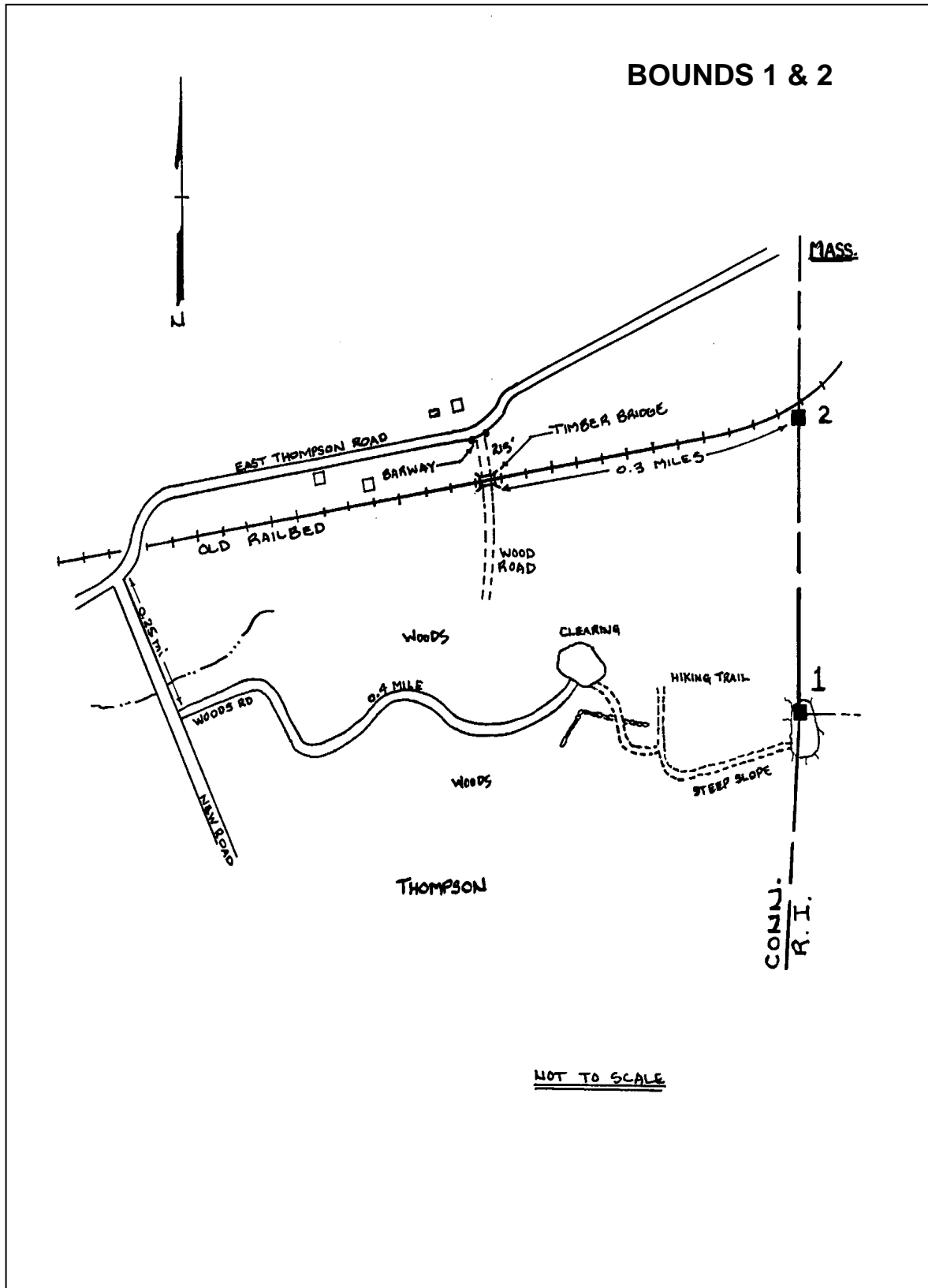
Following sketch, proceed from the Intersection of East Thompson Road, with New Road at the remains of the railroad right-of-way in East Thompson, southeasterly on New Road 0.25 miles, crossing Rocky Brook at 0.2 miles, to a barway on the left. Follow woods road northeasterly from barway 0.4 miles following well marked (Blue Dot) Trail to end of driveable portion of said trail at break in a stone wall. Continue on blue marked trail crossing stone wall and proceeding southerly, southeasterly, and northeasterly up steep slope to summit, and bound.

Bound is located on the southwestern slope of a wooded hill, 45 feet north along the crest from the south end of a sharp break, and about halfway up the steep hillside.

Bound is marked by a granite monument in good condition showing 3.9 feet above the ground. It is 14 inches square with a pyramidal top, lettered "MASS 1883" on the north face, "R.I. 1883" on the south face and "CONN" on the west face. It is 9.0 feet long to base of 6 inch pyramidal top. Monument was set in October or November 1883, by a MASSACHUSETTS-RHODE ISLAND COMMISSION.

Triangulation Station "TRI-STATE" set by the U.S.C. & G.S. is 32 feet S35W of the bound.

1906 Station o  
Bound # 2 -1,567 Feet North







**Looking Northeasterly**



**Looking Southerly**

LINE BOUND #2

## REGULATION GRANITE MONUMENT

## RAILROAD

Following sketch (page 3), from the Intersection of East Thompson Road and New Road continue 0.2 miles from new road on East Thompson Road to barway on the right. From barway, proceed south 215 feet on old road to timber bridge at the railroad right-of-way. From bridge proceed 0.3 miles northeast on R.R. R.O.W. to the bound on the right.

Bound is located 42 feet Southeast of the centerline of the abandoned right-of-way of the Midland Division of the N.Y.N.H. & H.R.R., and 6 feet northwest of an overgrown stone wall. There is rising woodland southeast of this wall and lower fairly level pine woods on the opposite side of the railroad beyond swampy ground along the right-of-way.

Bound is marked by a regulation granite monument, 1' X 1' and 4.3 feet above the ground with a  $\frac{1}{2}$ " X  $1\frac{3}{4}$ " drill hole in the center. It is lettered "1906" on the north face, "D MASS" on the east face and "T CONN" on the west face. It is 9.8 feet long, set in excavation made in yellow gravel. Monument was set May 1, 1907.

1906 Station 1567  
 Bound #1 - 1,567 Feet South  
 Bound #3 - 1,228 Feet North  
 R.R. R.O.W. - Barway - 215'



**Looking Westerly**



**Looking Westerly**

**ANGLE BOUND #3**

REGULATION GRANITE MONUMENT

PAVED HIGHWAY

From the remains of the railroad right-of-way in East Thompson, proceed northeasterly on East Thompson Road 0.7 miles to the bound on the left.

Bound is located 27 feet northwest of the center of the traveled way in the line of a highway wall 10 feet south of its northerly end where it turns away from the highway. Woodland rises west of the highway and to the east slopes down to a rocky brook. The highway is fairly level past the bound. There is a wood road to the west, just north of the bound.

Bound is marked by a regulation granite monument, 1' X 1' and 4.2 feet above the ground with a  $\frac{1}{2}$ " X  $1\frac{3}{4}$ " drill hole in the center. It is lettered "1906" on the north face, "D MASS" on the east face and "T CONN" on the west face. It is 10 feet long. Monument was set May 3, 1907 in the exact location of the old 1826 monument.

1906 Station 2795

Bound #2 - 1,228 Feet South

Bound #4 - 2,336 Feet North



**Looking Southwesterly**



**Looking Westerly**

**LINE BOUND #4**

REGULATION GRANITE MONUMENT

GRAVEL ROAD

From the Intersection of East Thompson Road and High Street, (A.K.A. Gore Road) in the Town of Douglas, northeast of Bound #3, proceed northwesterly uphill on High Street 0.3 miles to the bound on the right.

Bound is located 13 feet northeast of the center of the traveled way; in woodland. Woodland slopes away to the east and rises to the west on both sides of the road.

Bound is marked by a regulation granite monument, 1' X 1' and 3.9 feet above the ground with a  $\frac{1}{2}$ " X  $1\frac{3}{4}$ " drill hole in the center. It is lettered "1906" on the north face, "D MASS" on the east face and "T CONN" on the west face. It is 9.5 feet long, set in excavation made in rocky sand. Monument was set May 1, 1907.

1906 Station 5131  
Bound #3 - 2,336 Feet South  
Bound #5 - 518 Feet North



**Looking Easterly**



**Looking Easterly**

**ANGLE BOUND #5**

REGULATION GRANITE MONUMENT

INTERERIOR ANGLE

From the State Line on High Street (A.K.A. Gore Road) at Bound # 6, proceed easterly on line, 505 feet downhill to the bound.

Bound is located in low, level, wet, woodland, 50 feet east of the foot of the sloping hillside with ground rising to the west and south. There is an old stone heap southeast of the bound, and an old monument lying on its side 8 feet west of the bound.

Bound is marked by a regulation granite monument, 1' X 1' and 3.8 feet above the ground with a  $\frac{3}{4}$ " X 1  $\frac{1}{2}$ " drill hole in the center. It is lettered "1906" on the west face, "D MASS" on the north and east face, and "T CONN" on the south face. It is 8.8 feet long, set in excavation made in sandy hardpan. Monument was set May 1, 1907 in the exact location of the old 1826 monument.

1906 Station 5649  
Bound #4 - 518 Feet South  
Bound #6 - 505 Feet West





**Looking Northerly**



**Looking Westerly**

**LINE BOUND #6**

REGULATION GRANITE MONUMENT

GRAVEL ROAD

From the Intersection of East Thompson Road and High Street (A.K.A. Gore Road) in the Town of Douglas, northeast of Bound #3, proceed northwesterly uphill on High Street 0.15 miles past Bound #4, to bound at 0.5 miles. Road after passing Bound #4 turns in a more northerly direction, straightens out and rises more gradually. Bound is opposite a point about halfway up this rise.

Bound is located 13.5 feet northeast of the center of the traveled way in woodland. Woodland slopes away to the south and rises more slowly to the north on both sides of the road.

Bound is marked by regulation granite monument, 1' X 1' and 3.6 feet above the ground with a 1/2" X 1 1/4" drill hole in the center. It is lettered "1906" on the west face, "D MASS" on the north face, and "T CONN" on the south face. It is 9.2 feet long, set in excavation made in sandy hardpan. Monument was set April 30, 1907.

1906 Station 6154  
Bound #5 - 505 Feet East  
Bound #7 - 549 Feet West



**Looking Southwesterly**



**Looking Northeasterly**

**LINE BOUND #7**

**DOUGLAS - WEBSTER TOWN CORNER**

REGULATION GRANITE MONUMENT      INTERIOR TOWN CORNER

From the State Line on High Street (A.K.A. Gore Road) at Bound #6, proceed northwesterly over fairly level ground 549 feet to the bound.

Bound is located on the westerly brow at the line summit of a low, flat, ridge in woodland.

Bound is marked by a regulation granite monument, 1' X 1' and 4.2 feet above the ground with a  $\frac{3}{4}$ " X 1  $\frac{1}{2}$ " drill hole in the center. It is lettered "1906" on the east face, "MASS" on the north face, "W" on the west face and "T CONN" on the south face. Monument was set April 30, 1907 in the exact location of the old 1825 monument, a 7" X 8" granite monument now lying 10 feet southwest of the bound.

1906 Station 6703  
Bound #6 - 549 Feet East  
Bound #8 - 6,735 Feet West



**Looking Northeasterly**



**Looking Northeasterly**

**RESTORATION REPORT - 1999****LINE BOUND # 8**

SMALL GRANITE MONUMENT

GRAVEL ROAD

From the Intersection of Route 193 (Webster Road) and Sand Dam Road, in the town of Thompson, proceed easterly on Sand Dam Road 0.4 miles to Indian Inn Road.

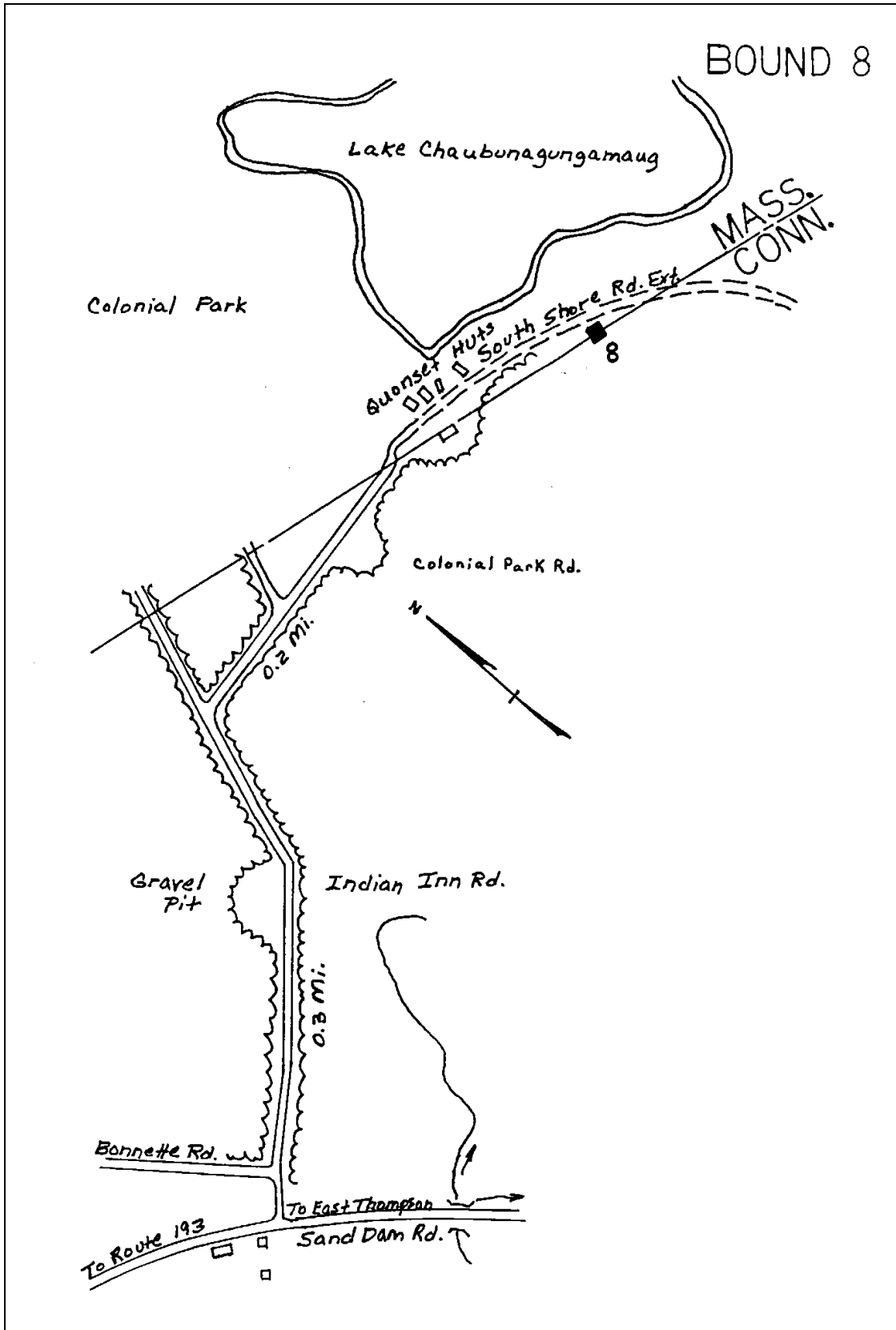
Following sketch, proceed along Indian Inn Road 0.3 miles to South Shore Road, then along South Shore Road, approximately 0.2 miles to where Park Road joins South Shore Road Extension at the State Line. Continue along South Shore Road Extension 330 feet to monument on the south side of the road.

Bound is situated 19' feet southeast of centerline of South Shore Ext., 58' southeast utility pole M.E.C.O. #10 and 102' southeast of utility pole M.E.C.O. #11.

Bound is marked by a 9' regulation granite monument, showing 3.5 feet above the ground. It is 12" X 12" in section with a 1/2" drill hole 1 inch deep in the top. It is lettered "MASS" on the north face, "CONN" on the south face and "1998" on the west face. Monument was set April 7, 1999.

Connecticut Coordinate Grid  
NAD 83  
N=935117.86  
E=125,0763.45

1906 Station 12838  
Bound #7 - 6,735 Feet East  
Bound #9 - 3,522 Feet West



1997

CONNECTICUT - MASSACHUSETTS STATE BOUNDARY LINE PERAMBULATION  
CONNECTICUT DEPARTMENT OF TRANSPORTATION











**Looking Easterly**



**Looking Southerly**

# CT - MA Line Section - B



**LINE BOUND #9**

REGULATION GRANITE MONUMENT

PAVED ROAD

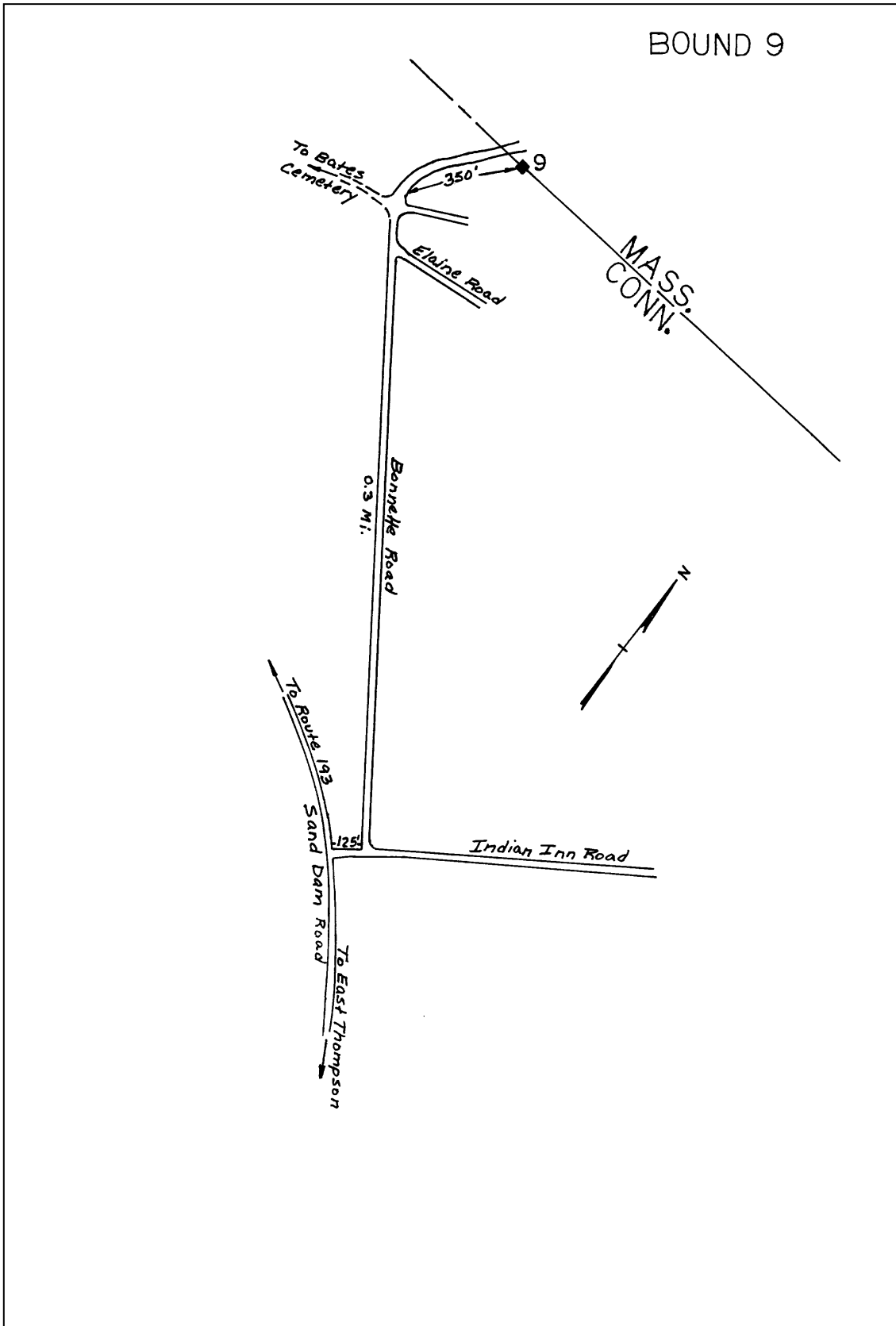
From the Intersection of Route 193 (Webster Road) and Sand Dam Road in the Town of Thompson, proceed easterly on Sand Dam Road 0.4 miles to Indian Inn Road.

Following sketch, proceed along Indian Inn Road 125 feet to Bonnette Road; thence westerly along Bonnette Road 0.3 miles passing Elaine Street to a surface treated road heading northerly. Proceed on said road 350 feet to bound on the east side of said road.

Bound is located on a slope 54 feet east of the gravel road with woodlands southwest, a 1 story, brick house 100 feet to the southeast, and a 1 ½ story house to the northeast.

Bound is marked by a regulation granite monument 1' X 1' and 3.9 feet above the ground with a ¾" X 1 ½" drill hole in the center. It is lettered "1906" on the west face, "W MASS" on the north face, and "T CONN" on the south face. It is 10 feet long, set in excavation made in gravel and sand. Monument was set May 3, 1907.

1906 Station 16960  
Bound #8 - 3,522 Feet East  
Bound #10 - 886 Feet West



1997



**Looking Northerly**



**Looking Northerly**

**LINE BOUND # 10**

REGULATION GRANITE MONUMENT

PAVED HIGHWAY

From the junction of Route 200 (Quaddick Road) and 193 (East Thompson Road) in Thompson, Connecticut, proceed northerly on Route 193 to the bound at 5.0 miles.

The bound, which on the east side of the road, is a 1' X 1' X 9' regulation granite monument with a ¼" drill hole in the center. It stands 4 feet above the ground. It is lettered "1970" on the west face, "MASS" on the north face, and "CONN" on the south face. It is 42.2 feet northwest of the northwest corner of a 2 story frame house, 38 feet east of the centerline of Route 193 and 23 feet south of a private road running easterly from Route 193.

The bound was reset on January 24, 1980, 35.98 feet east of the original Bound #10, set on May 3, 1907 and subsequently removed as a result of highway reconstruction in Massachusetts. It is 10.02 feet from and on an easterly prolongation of two Massachusetts granite highway boundary monuments on the east and west sides of the road, having a distance between monuments of 63.18 feet.

The bound has been located from a Connecticut right-of-way monumented baseline system and more particularly shown on Right-of-Way Map 141-09, Sheet 4. The Massachusetts monuments herein referred to are also located and shown on this map.

1906 Station 17846  
Bound #9 - 886 Feet East  
Bound #11 - 3,575 Feet West





**Looking Northerly**



**Looking Northerly**

**RESTORATION REPORT - 1998****LINE BOUND # 11**

SMALL GRANITE MONUMENT SUMMIT	INTERIOR	LINE
----------------------------------	----------	------

From the Intersection of Interstate 395 and Wilsonville Road, in the Town of Thompson, Connecticut, proceed northerly from Wilsonville Road up the on ramp onto Interstate 395 and following said highway northerly to a point opposite bound and at a distance of 1.15 miles. There is an orange painted concrete project marker at the base of the east highway ledge cut at the above mentioned 1.15 miles point.

Proceed due east 133 feet, more or less, from the center of traveled lanes of the highway up the slope to a stone wall, which parallels the highway. Continue from a break in the wall, said break being 72 feet south of a wall corner and 327 feet easterly to the bound which is situated approximately 100 feet north of the apex of a hill, in a stand of white pines.

The bound was found broken off below the surface of the ground during the 1997 Perambulation. The upper portion was set in place on remaining portion of bound then located from traverse line to determine it's present location with the known location. Now comparing repaired location and known position the bound was found to be approximately .7' off.

The repair consisted attaching the upper section of bound to remaining lower section using "Sikadur 31 Hi-Mod Gel " two-part epoxy. A brass disk stamped " State Line Bound" was then set in top center on bound. The bound was then move into its proper coordinated location and disk drilled.

Continued

**RESTORATION REPORT - 1998**

**LINE BOUND # 11**

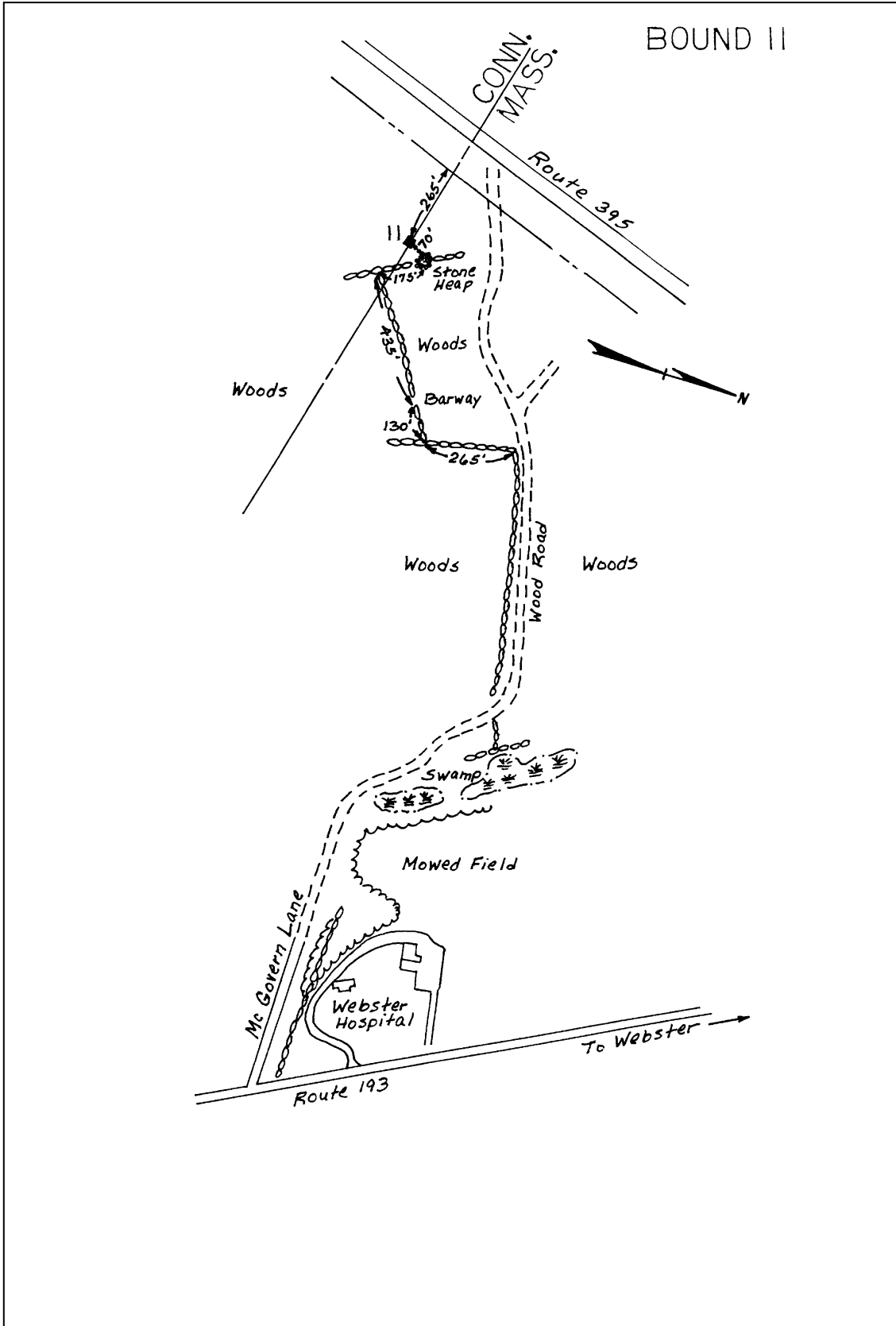
Continued

To further strengthen and protect the bound from future damage an approximately 3' x 3' hole 2 1/2' deep was dug around the bound. This was formed and concrete poured to about 18" above the break in the bound. Rebar was also included in the concrete as per repair specifications.

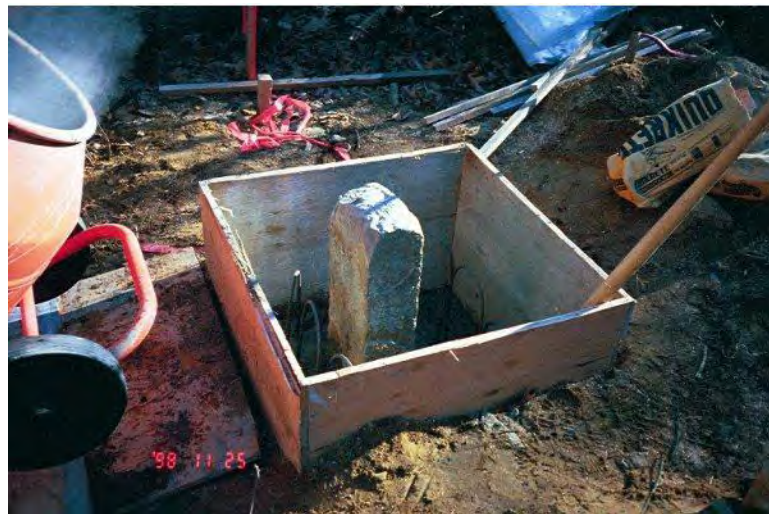
Bound is marked by a granite monument. It is 5" X 11" in section with a drill hole in brass disk stamped "State Line Bound", and is lettered "M" on the north face and "C" on the south face. It is 5.3 feet long, set in excavation made in sand. Monument was set May 7, 1907, with repair being completed in November 1998.

The following sketch is an alternate route to the bound.

1906 Station 21421  
Bound #10 - 3,539 Feet West  
Bound #12 - 3,471 Feet West



1997







**Looking Southerly**



**Looking Westerly**

**LINE BOUND # 12**

GRANITE MONUMENT

PAVED HIGHWAY

From the Intersection of Interstate 395 and Wilsonville Road in the Town of Thompson, proceed westerly on Wilsonville Road to Labby Road (Ash Street in Massachusetts) at 1.0 miles. Proceed northerly 1.1 miles on Labby Road to the bound which is located almost directly across from the junction of Woods Grove Drive with Labby Road. Bound is 16.5 feet west of the center of the traveled way. The highway at this point is fairly level and straight. There is residential property on both sides of the line.

Bound is marked by a regulation granite monument broken off at the ground level. The remaining length was reset and has a  $\frac{3}{4}$ " X 1  $\frac{1}{2}$ " drill hole in the center. It has been designated Bound "12A" by the Connecticut Highway Department on July 1, 1960.

1906 Station 24892  
Bound #11 - 3,471 Feet East  
Bound #12A - 4.01 Feet East  
Bound #13 - 1,587 Feet West





**Aerial View**



**Looking Northerly**

**LINE BOUND #12A**

GRANITE MONUMENT

PAVED HIGHWAY

From the Intersection of I-395 and Wilsonville Road in the Town of Thompson, proceed westerly on Wilsonville road to Labby Road (Ash Street in Massachusetts) at 1.0 miles. Proceed northerly 1.1 miles on Labby Road to the bound.

The bound is located almost directly across from the junction of Woods Grove Drive and Labby Road, 20.5 feet west of the center of the traveled way and 40 feet southeast of the corner of a 1 1/2 story frame house on the west side of the highway. The highway at this point is fairly level and straight. There is residential property on both sides of the road.

Bound is marked by the top 4 feet of a regulation granite monument, 1' X 1' with a 3/4" X 1/2" drill hole in the center, set 2 feet deep in a 3' X 3' concrete base. It is lettered "1906" on the east face, "W MASS" on the north face, and "T CONN" on the south face. Bound was set by the Connecticut Highway Department on July 1, 1960.

Bound is original top portion of Bound #12, broken by construction in the area.

1906 Station 24896 (1960 Location)  
 Bound #11 - 3,475 Feet East  
 Bound #12 - 4.01 Feet East  
 Bound #13 - 1,583 Feet East



**Looking Northwesterly**



**Looking Northerly**

**LINE BOUND # 13**

REGULATION GRANITE MONUMENT

PAVED HIGHWAY

From the State Line of Labby Road (Ash Street in Massachusetts) at Bound #12, proceed northerly and westerly 0.6 miles on Ash Street to its intersection with School Street. Proceed southerly on School Street 0.2 miles to the bound where the road changes to Wagher Road in Connecticut.

Bound is located 20 feet east of the center of the traveled way. The highway at this point is ascending slowly to the south with a residential area on both sides of the highway in both States. The bound is located 26 feet west of the southwest corner of the attached one car garage on a 1 1/2 story frame house, #1211 on the east side of the highway.

Bound is marked by a regulation granite monument 1' X 1' and 3.9 feet above the ground with a  $\frac{3}{4}$ " X 1  $\frac{1}{2}$ " drill hole in the center. It is lettered "1906" on the west face, "W MASS" on the north face, and "T CONN" on the south face. It is 9.5 feet long, set in excavation made in clay and large boulders. Monument was set May 6, 1907 in the exact location of the old 1826 monument.

1906 Station 26479

Bound #12 - 1,587 Feet East

Bound #12A - 1,583 Feet East

Bound #14 - 1,557 Feet West



**Looking Easterly**



**Looking Easterly**

**LINE BOUND # 14****WEBSTER - DUDLEY TOWN CORNER - WITNESS MARK**

REGULATION GRANITE MONUMENT

RAILROAD

From the Intersection of Route 12 and Wilsonville Road in Wilsonville, proceed northerly on route 12, 0.8 miles to Perryville Road on the east side of Route 12; thence easterly on Perryville road 0.25 miles to the railroad track. Proceed southerly along track 170 feet to the bound.

Bound is located 33 feet west of the west rail of the single track and 97.6 feet south of the southwest corner of the stone freight house and about in range with its east face. It is about 150 feet east of the east bank of the French River.

Bound is witness mark for the Town line between Dudley and Webster, which is in the center of the stream.

Bound is marked by a regulation granite monument showing 3.1 feet above the ground. It is leaning slightly to the north. The northeast and southwest corners are chipped off. It is lettered "1906" on the west face, "W MASS" on the north face and "T CONN" on the south face. U.S.C. & G.S. Bench Mark #W88 was set in the center of the top in 1936.

1906 Station 28036  
Bound #13 - 1,557 Feet East  
Bound #15 - 1,370 Feet West



**Looking Southwesterly**



**Looking Southwesterly**

**LINE BOUND # 15**

REGULATION GRANITE MONUMENT

PAVED HIGHWAY

From the Intersection of Route 12 and Wilsonville Road in Wilsonville, proceed northerly on Route 12 to bound at 0.8 miles. The highway, after descending northerly, rises just before the bound and curves to the west. There is a large barn behind the bound with a house on the opposite side of the highway.

Bound is located 30 feet west of the center of the traveled way and 15.3 feet west of the face of a retaining wall on the west side of the highway. It is 4.1 feet east of a large barn on the east face of which are three screws in a vertical line designating the State Line. On the opposite side of the highway is the front yard of a dwelling house.

Bound is marked by a regulation granite monument 1' X 1' and 3.9 feet above the ground with a  $\frac{3}{4}$ " X 2  $\frac{1}{4}$ " drill hole in the center. It is tipped slightly to the north and west with a large chip in the northeast corner, and a small chip in the southwest corner. It is lettered "1906" on the east face, "D MASS" on the north face and "T CONN" on the south face. It is 9.4 feet long, set in excavation made in gravelly loam and rocks. Monument was originally set May 7, 1907. It was reset in its present location on October 1, 1941, 16.06 feet west of its former location, on-line.

1906 Station (1941 Location)  
Bound #14 - 1,370 Feet East  
Bound #16 - 1,582 Feet West



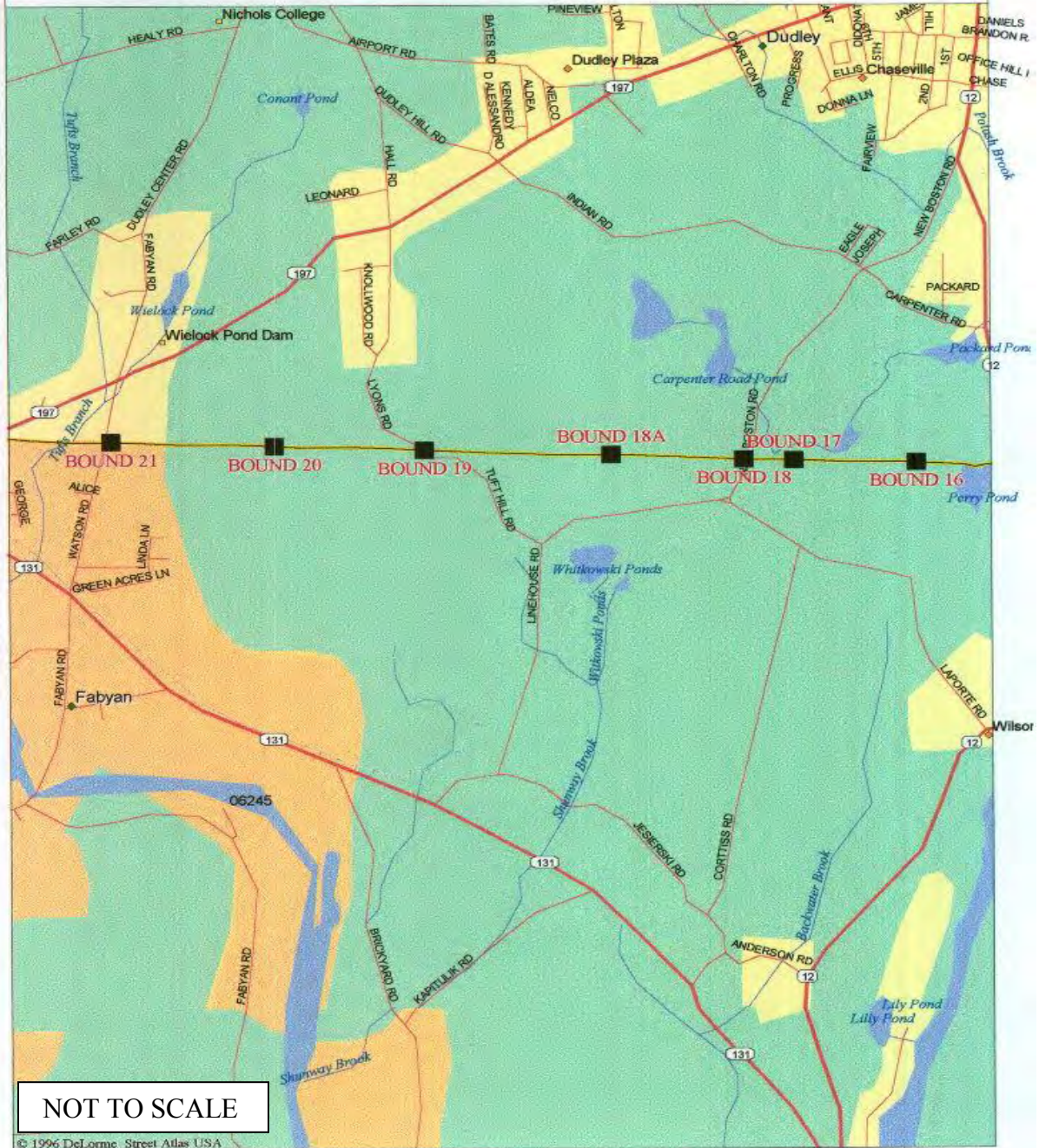


**Looking Southerly**



**Looking Southerly**

# CT - MA Line Section - C



# CT - MA Line Section - C



### LINE BOUND # 16

SMALL GRANITE MONUMENT                    INTERIOR                    LINE  
SUMMIT

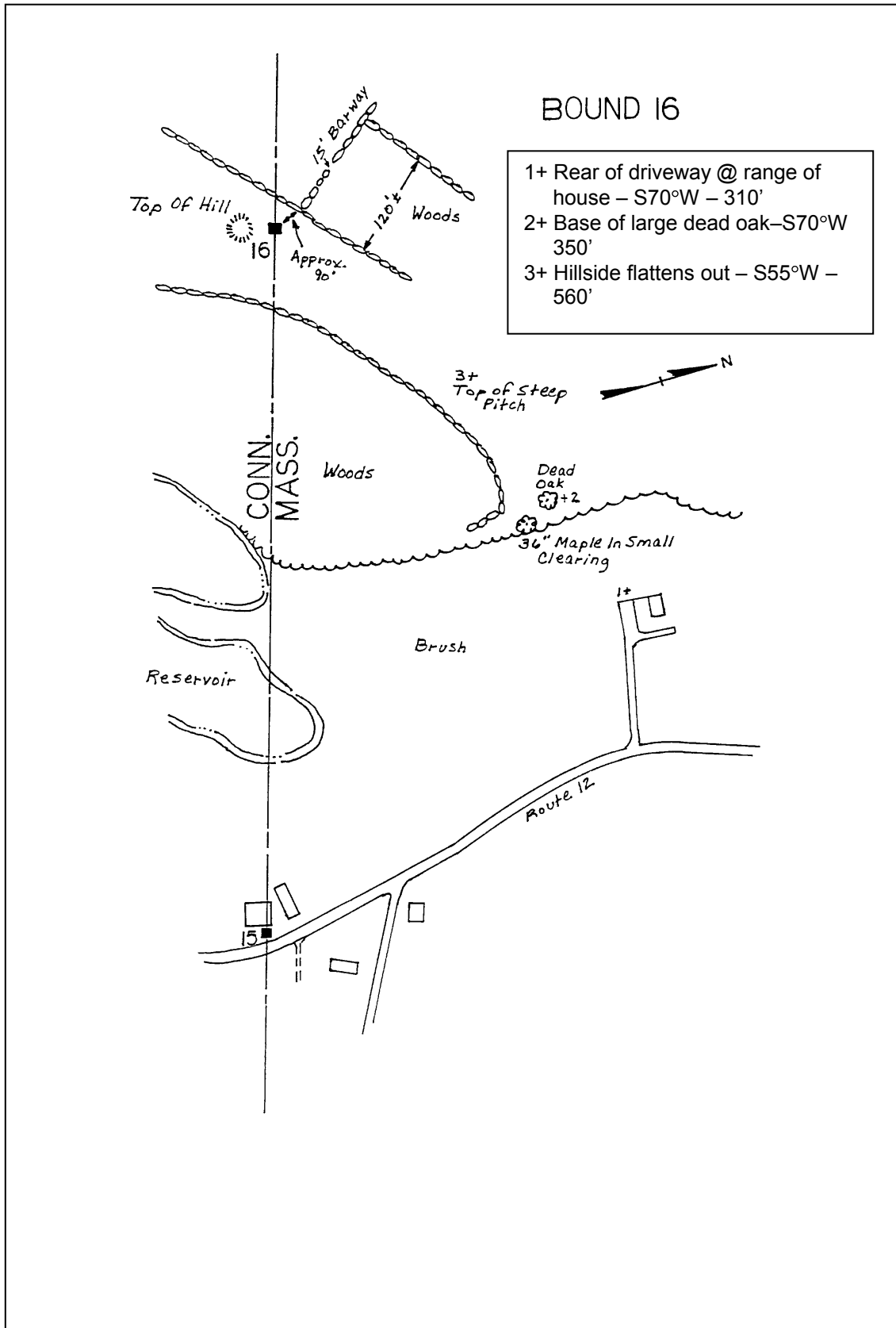
From the State Line on Route 12 at Bound #15, proceed northerly on Route 12 to a driveway on the west side of highway at 0.2 miles. The highway at this point is fairly level with open fields on the east sloping down to the French River and hill back from the highway just beyond the driveway. Turn in driveway and proceed up steep grade to a 1 story shingle house.

Following sketch, proceed southwesterly uphill through overgrown pasture to the bound.

Bound is located on the northern slope of a wooded hill, 60 feet northeast of the top of the hill. There are walls 110 feet west and 170 feet east of the bound with woodland beyond the walls. With line cleared it would see Bound #13 and the line house opposite Bound #18.

Bound is marked by a granite monument, 6" X 12" and 1.7 feet above the ground with a  $\frac{3}{4}$ " X  $1\frac{1}{4}$ " drill hole in the center. It is lettered "M" on the north face and "C" on the south face. It is 5.3 feet long, set in excavation made in loamy sand. Monument was set May 7, 1907.

1906 Station 30988  
Bound #15 - 1,582 Feet East  
Bound #17 - 1,985 Feet West





**Looking Northerly**



**Looking Northerly**

**LINE BOUND #17**

REGULATION GRANITE MONUMENT

RAILROAD

From the State Line on New Boston Road (Line House Road in Connecticut) south of Webster at Bound #18, proceed across highway to south side of "Line House". Proceed easterly along gravel spur on range with south face of wooden refectory building behind "Line House" to railroad. Proceed northerly 300 feet up right-of-way to the bound.

Bound is located 13.8 feet northwest of the northwest rail of the Southbridge Branch of the Providence-Worcester Railroad in swampy ground. There is swamp land on both sides of the right-of-way at the bound.

Bound is marked by a regulation granite monument, 1' X 1' and 4.0 feet above the ground with a  $\frac{3}{4}$ " X 1  $\frac{1}{2}$ " drill hole in the center. It is tipped slightly to the north and has a small chip in the top of the south face. It is lettered "1906" on the west face, "D MASS" on the north face, and "T CONN" on the south face. It is 9.5 feet long, set in excavation made in gravel, hardpan and peat. Monument was set May 8, 1907.

1906 Station 32973  
Bound #16 - 1,985 Feet East  
Bound #18 - 584 Feet West



**Looking Northerly**



**Looking Northerly**

**LINE BOUND # 18**

REGULATION GRANITE MONUMENT

PAVED HIGHWAY

From the Intersection of Carpenter Road which runs north of Packard Pond, and New Boston Road in the Town of Webster, proceed southerly on New Boston Road 0.7 miles to the bound. The highway at this point is level with a public house on the east, just north of the line.

Bound is located 20 feet west of the center of the traveled way and 1.5 feet east of the east face of the west highway wall. It is approximately 80 feet southwesterly of the southwest corner of the "Line House", opposite the south entrance to "Line House" Self Storage on the east side of the highway, beyond which open field descends to swampy land along the railroad. The bound is 4 feet east of utility pole "M.E.C.O. 51-1". A hill rises west of the bound, a wooded area north of the line and a pasture to the south of the bound.

Bound is marked by a regulation granite monument, 1' X 1' and 3.7 feet above the ground with a 1/2" X 1 1/2" drill hole in the center. Bound is tipped slightly to the east. It is lettered "1906" on the east face, "D MASS" on the north face, and "T CONN" on the south face. It is 9.3 feet long, set in excavation made in loam and sand. Monument was set May 7, 1907.

1906 Station 33557

Bound #17 - 584 Feet East

Bound #18A - 1,781 Feet West

Bound #19 - 4,746 Feet West





**Looking Southwesterly**



**Looking Southwesterly**

**BOUND 18 (Unofficial)**



**Looking Easterly**



**Looking Easterly**

**LINE BOUND #18A**

DRILL HOLE	INTERIOR	LINE
SUMMIT		

From the State Line on New Boston Road (Line House Road in Connecticut) south of Webster at Bound #18, proceed southerly on Line House Road, 0.2 miles to the intersection with Laporte Road. Continue westerly on Line House Road 0.1 miles to first homestead on the north side of the highway.

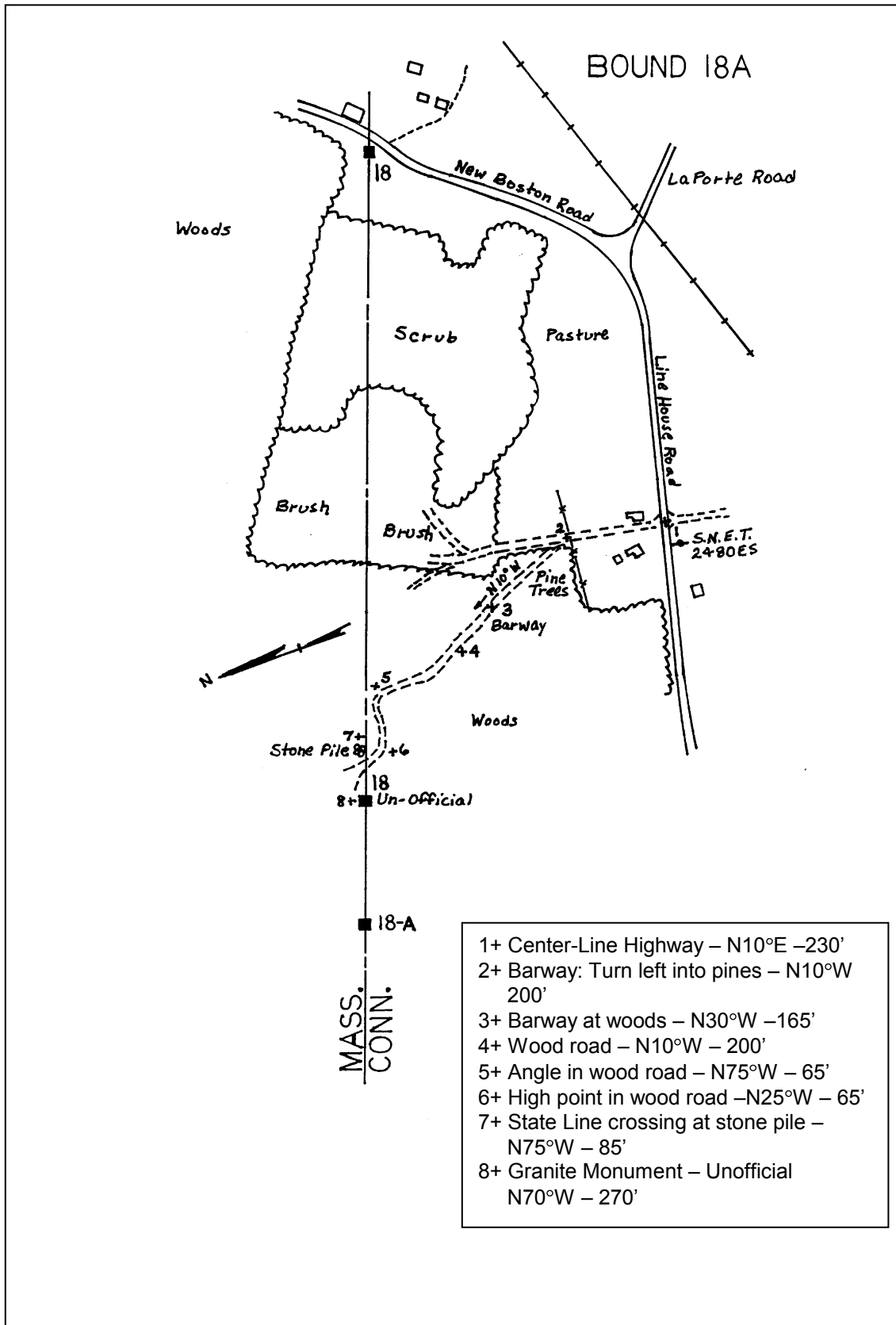
Following sketch, enter paved drive west of house, follow drive to barway and wood road at Point #2. Leave well defined road at Point #2 and proceed N 10° W on wood road, which is overgrown with a stand of small white pine trees flanked by larger pine trees, 200 feet to barway at Point #3. The old gate posts are still in place. Continue along wood road to stone pile at State Line. Turn west on-line to an unmarked granite monument 8" X 8" in section with a ½" X ½" deep drill hole in the top, showing 3 feet above the ground in open woodland (#18 unofficial). Continue westerly on-line, 266 feet to bound.

Bound is located in open woodland at a line summit, land undulating in immediate vicinity and rising to the north, dropping away in other directions. It is in the sloping top of a boulder 6' X 2 ¾' showing 1 ¼ feet above the ground at its highest point, at its southeasterly end and sloping northwesterly.

Bound is marked by a ¾" drill hole sunk 2 ¼" into the boulder 8" southwest of its northeast edge. There is a faint 2 ½" square cut around the drill hole.

Intermediate monument (#18 unofficial) is 270 feet east of Line Bound #18A and is about 12.64 feet north of the State Line. It was in place in 1906 and is presumably a monument marking a property corner. There is a large chip out of the north most top corner.

1906 Station 35338  
Bound #18 - 1,781 Feet East  
Bound #19 - 2,965 Feet West



1997



**Aerial View**



**Looking Southeasterly**

**LINE BOUND # 19**

REGULATION GRANITE MONUMENT

PAVED HIGHWAY

From the Intersection of Route 197 and Lyons Road, in the Town of Dudley, proceed southerly on Lyons Road, designated as Tuft Hill Road in Connecticut, to bound at 0.8 miles. Highway passes a frame house on the east and curves to the west just before the bound.

Bound is located 15 feet northeast of the center of the traveled way, and 5 feet south of utility pole W.C.E.C. #29. Highway is level at this point, but curves to the east and descends east of the bound. There is a house 100 feet north of the bound and pastures on both sides of the road.

Bound is marked by a regulation granite monument, 1' X 1' and 4.2 feet above the ground with a  $\frac{1}{2}$ " X  $1\frac{3}{4}$ " drill hole in the center. It is lettered "1906" on the west face, "D MASS" on the north face, and "T CONN" on the south face. It is 9.6 feet long, set in excavation made in loam and 5.0 feet in ledge. Monument was set on May 9, 1907. The top of the old 1826 monument (#19 unofficial) which used to stand as a guard stone at the drive to the house. North of the bound was removed due to construction of a driveway and is stored at the West Willington State Maintenance Garage.

1906 Station 38303

Bound #18 - 4,746 Feet East

Bound #18A - 2,965 Feet East

Bound #20 - 1,889 Feet West



Looking North



Looking North

**LINE BOUND # 20**

SMALL GRANITE MONUMENT	INTERIOR	LINE
SUMMIT		

From the State Line on Lyons Road at Bound #19, proceed northwesterly on Lyons Road to a farm road and gateway in the southwest highway wall at 0.1 mile. Highway at this point turns sharply to the north.

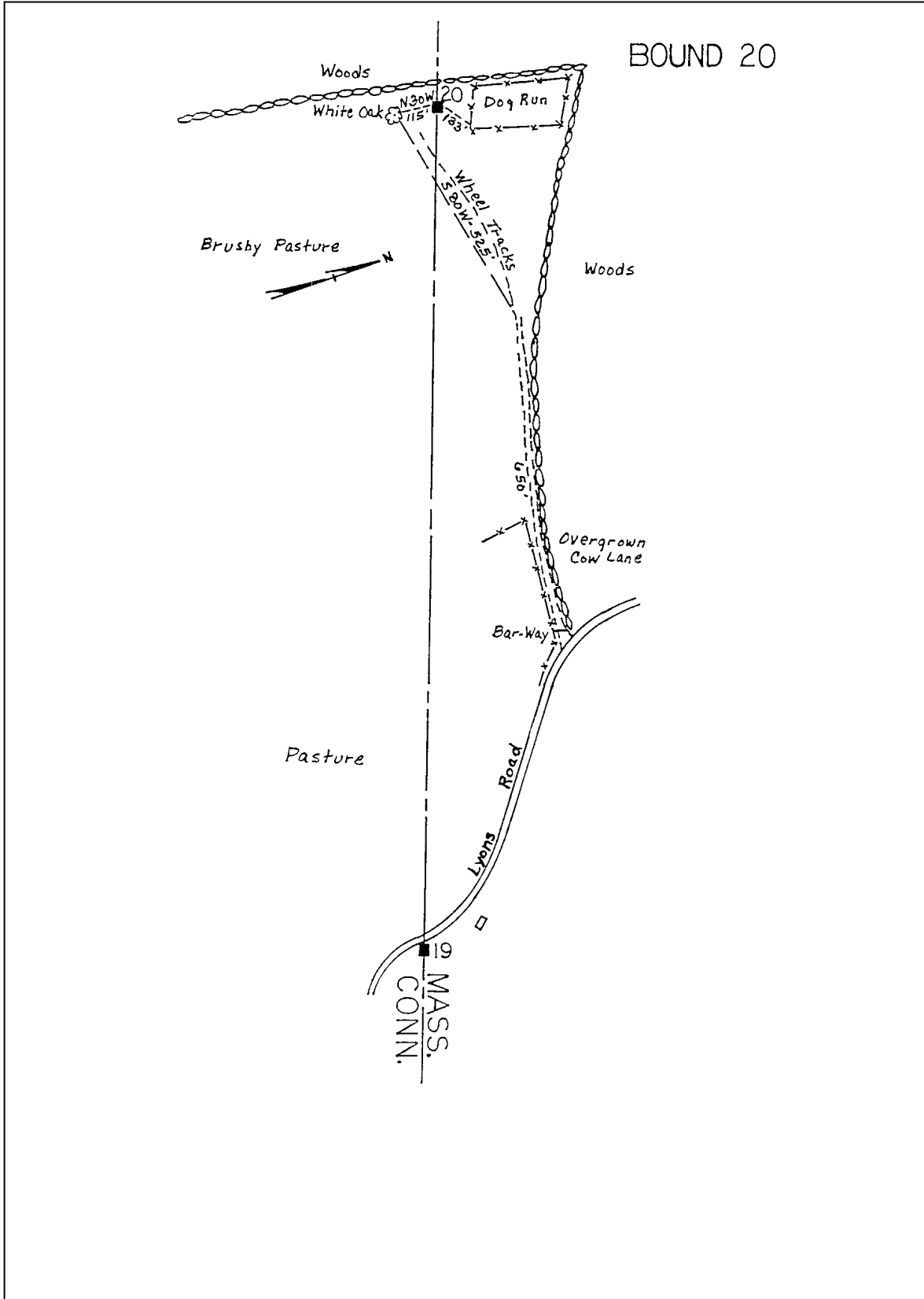
Following sketch, proceed westerly 650 feet on overgrown cow lane along the north side of large pastures growing up to shrub and blueberries, to the low point in the land. Proceed S 80° W following wheel tracks, 525 feet to a single large white oak tree. Proceed N 30° W, 115 feet to the bound.

Bound is located on the northern slope of a hill in a large overgrown pasture 22 feet east of a wall along the eastern edge of the woods lying west of the pasture, and 250 feet south of the north wall of the pasture which is continuous for 1,000 feet to the east to the gateway at the highway. With line cleared it would afford a good view east and west across Quinebaug to Bound #27. Bound is S 60 ° W, and 133 feet from the southeast corner of what was at one time a dog run.

Bound is marked by a granite monument showing 2.4 feet above the ground. It is 6" X 13 ½" in section with a ¾" drill hole 1" deep in the top and lettered "M" on the north face and "C" on the south face. It is 5.5 feet long, set in excavation made in loamy sand. Monument was set May 7, 1907.

1906 Station 40192  
 Bound #19 - 1,889 Feet East  
 Bound #21 - 2,735 Feet West







**Looking Northwesterly**



**Looking North**

**LINE BOUND # 21**

REGULATION GRANITE MONUMENT

PAVED HIGHWAY

From the Intersection of Connecticut Route 131 (Quinebaug Road) and Watson Road, in the Town of Thompson, proceed northerly on Watson road to bound at 0.5 miles. Highway after running level for some distance starts to ascend opposite a 2 story frame house on the west, 250 feet south of the line. There is a high hill to the east somewhat back from the highway.

Bound is located 19 feet east of the center of the traveled way, 1 ½ feet west of the face of the east highway wall and 1 ½ feet south of the produced centerline of a line wall to the east. The bound is 180 feet along the road north of the range of the north side of a 2 story frame house owned now or formerly by R. Martin. There is pasture land east of the highway with a small cabin on the hill east of the bound in Connecticut. A high bank rises to a wall on the westerly side of the highway with pastures beyond.

Bound is marked by a regulation granite monument showing 3.8 feet above the ground. It has a significant chip out of the northeast top corner. It is lettered "1906" on the west face, "D MASS" on the north face, and "T CONN" on the south face. The top is 1' X 1' with a ¾" X 2" drill hole in the center. It is 9.3 feet long and is set in an excavation made in gravel. Monument was set May 10, 1907.

1906 Station 42927  
Bound #20 - 2,735 Feet East  
Bound #22 - 1,848 Feet West

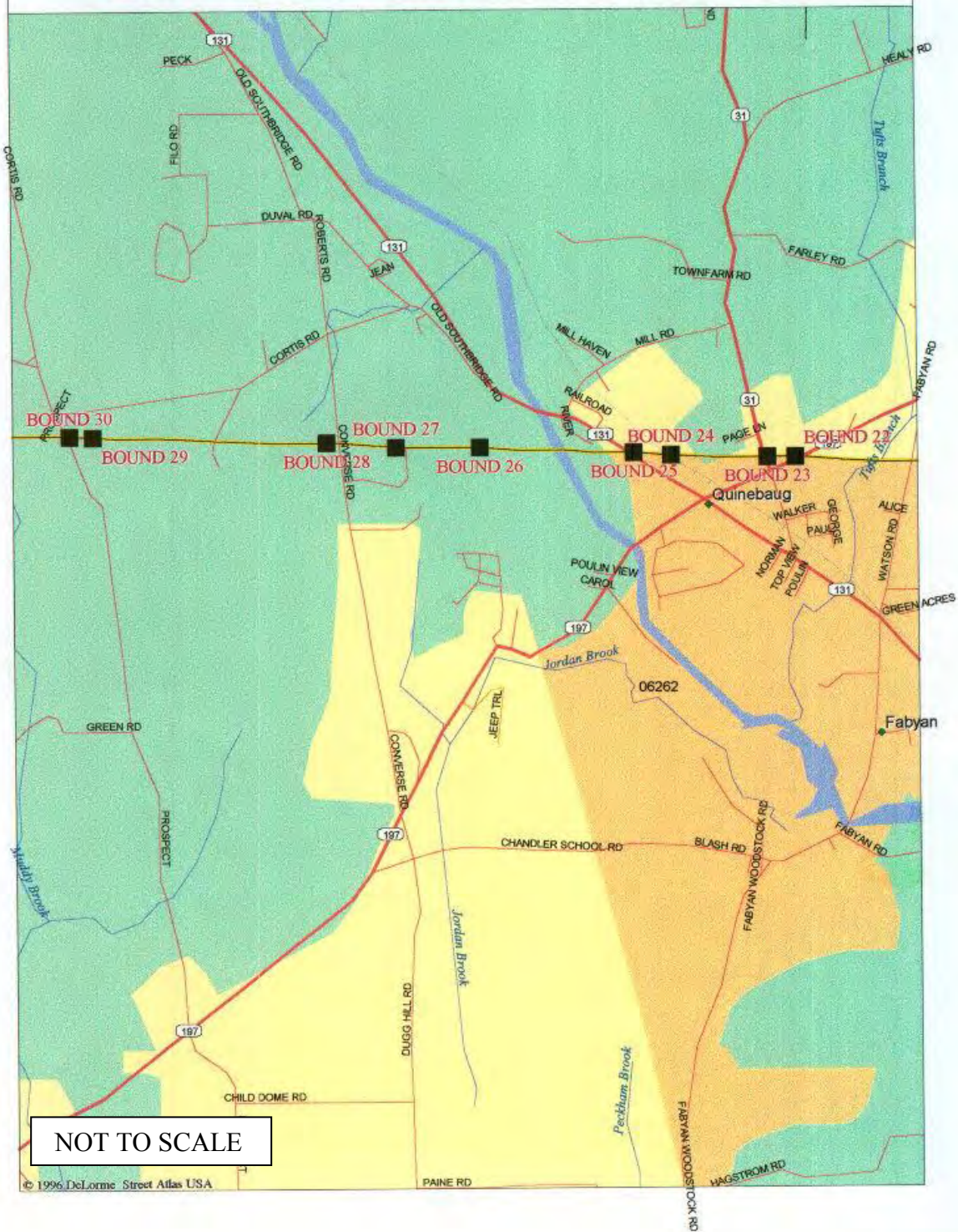


**Looking Northeasterly**



**Looking Northeasterly**

# CT - MA Line Section - D



# CT - MA Line Section - D



**LINE BOUND #22**

REGULATION GRANITE MONUMENT

PAVED HIGHWAY

From the intersection of Connecticut Route 197 (Old Turnpike) and 131 in the center of Quinebaug, proceed northeasterly on Route 197 passing intersection of Dresser Hill Road and Walker Road to bound at 0.3 miles. There are houses on both sides of the highway at this point. Highway descends to a low point 100 feet beyond bound.

Bound is located 24 feet northwest of the center of the traveled way, about 100 feet southwest of a brook crossing the highway, 58.1 feet northeast of the northeast corner of house # 200, a 1 1/2 story house, and 15.2 feet west of utility pole N.E.T. & T. #18.

Bound is marked by a regulation granite monument showing 3.9 feet above the ground. It is lettered "1906" on the east face, "D MASS" on the north face, and "T CONN" on the south face. The top is 1' X 1' with a 1/2" X 1 1/2" drill hole in the center and a 3/4" stainless steel bolt set almost flush with the top of the monument in the northeast corner. It is 9.5 feet long, set in an excavation made in sand. Monument was set May 10, 1907.

1906 Station 44775  
Bound #21 - 1,848 Feet East  
Bound #23 - 503 Feet West



**Looking Northwesterly**



**Looking Northwesterly**

**LINE BOUND #23**

REGULATION GRANITE MONUMENT

PAVED HIGHWAY

From the intersection of Connecticut Routes 131 and 197 (Old Turnpike) in Quinebaug, proceed northeasterly on Route 197 to intersection with Dresser Hill Road (Massachusetts Route 31) at 0.2 miles. Proceed northerly 0.05 miles on Dresser Hill Road to bound.

Bound is located 11 feet east of the center of the traveled way and 102.5 feet southeast of the southeast corner of a 1 story frame house owned now or formerly by J. Smoolca. The highway rises slightly to the north at this point with a mowing lot on the east and residences on the west.

Bound is marked by a regulation granite monument showing 3.6 feet above the ground. It is lettered "1906" on the west face, "D MASS" on the north face, and "T CONN" on the south face. The top is 1' X 1' with a  $\frac{3}{4}$ " X 2" drill hole in the center. It is 9.2 feet long and is set in excavation made in loam and sand. Monument was set May 10, 1907.

1906 Station 45278  
Bound #22 - 503 Feet East  
Bound #24 - 1,526 Feet West





**Looking Northeasterly**



**Looking Northeasterly**

**LINE BOUND #24**

REGULATION GRANITE MONUMENT

RAILROAD

From the intersection of Connecticut 131 (Quinebaug Road) and Route 197 in Quinebaug, proceed northwesterly on Route 131, 0.15 miles to the Lido Restaurant on the easterly side of the highway, opposite the Subdivision. Proceed northeasterly 207 feet across the railroad tracks from the rear of the restaurant to bound.

Bound is located 30 feet northeast of the centerline of the Southbridge Branch of the N.Y.N.H. & H.R.R. and 3 feet southwest of the northeast right-of-way fence and near the southeast end of a cut on the southwestern slope of a knoll.

Bound is marked by a regulation granite monument showing 4.0 feet above the ground. Bound is chipped on the northwest corner. It is lettered "1906" on the west face, "D MASS" on the north face, and "T CONN" on the south face. The top is 1' X 1' with a  $\frac{3}{4}$ " X 2" drill hole in the center. It is 9.5 feet long and is set in an excavation made in sand. Monument was set May 8, 1907.

1906 Station 46804  
Bound #23 - 1,526 Feet East  
Bound #25 - 538 Feet West



**Looking Northerly**



**Looking Northerly**

**LINE BOUND #25**

REGULATION GRANITE MONUMENT

PAVED HIGHWAY

From the intersection of Connecticut Routes 131 (Quinebaug Road) and 197 in Quinebaug, proceed northwesterly on Route 131 to bound at 0.25 miles.

Bound is located 32 feet northeast of the center of the traveled way, and 4 feet east of a row of pines. Highway which is level in Connecticut, slopes gently down into Massachusetts from this point. There are residences on either side of the highway with a Subdivision beyond the highway to the south. There is a 1 story, vinyl sided house immediately northeast of the bound and a large dwelling to the west of the boundary.

Bound is marked by a regulation granite monument showing 3.5 feet above the ground. There are small chips in the southeast and southwest corners. It is lettered "1906" on the west face, "D MASS" on the north face and "T CONN" on the south face. The top is 1' X 1' with a  $\frac{3}{4}$ " X  $1\frac{3}{4}$ " drill hole in the center. (It is 2' east of a 6" X 6" concrete monument with an "M" on its west face.) Bound is 9.5 feet long, set in excavation made in gravel. Monument was set May 10, 1907.

1906 Station 47342  
Bound #24 - 538 Feet East  
Bound #26 - 2,468 Feet West



Looking Northerly



Looking Northerly

**LINE BOUND # 26****THOMPSON - WOODSTOCK TOWN CORNER**

REGULATION GRANITE MONUMENT

INTERIOR TOWN CORNER

From the intersection of Connecticut Routes 131 (Quinebaug Road) and 197 in Quinebaug, proceed northwesterly on Route 131 to the first house west of the Quinebaug River at 0.7 miles. Follow drive southwest to rear of house.

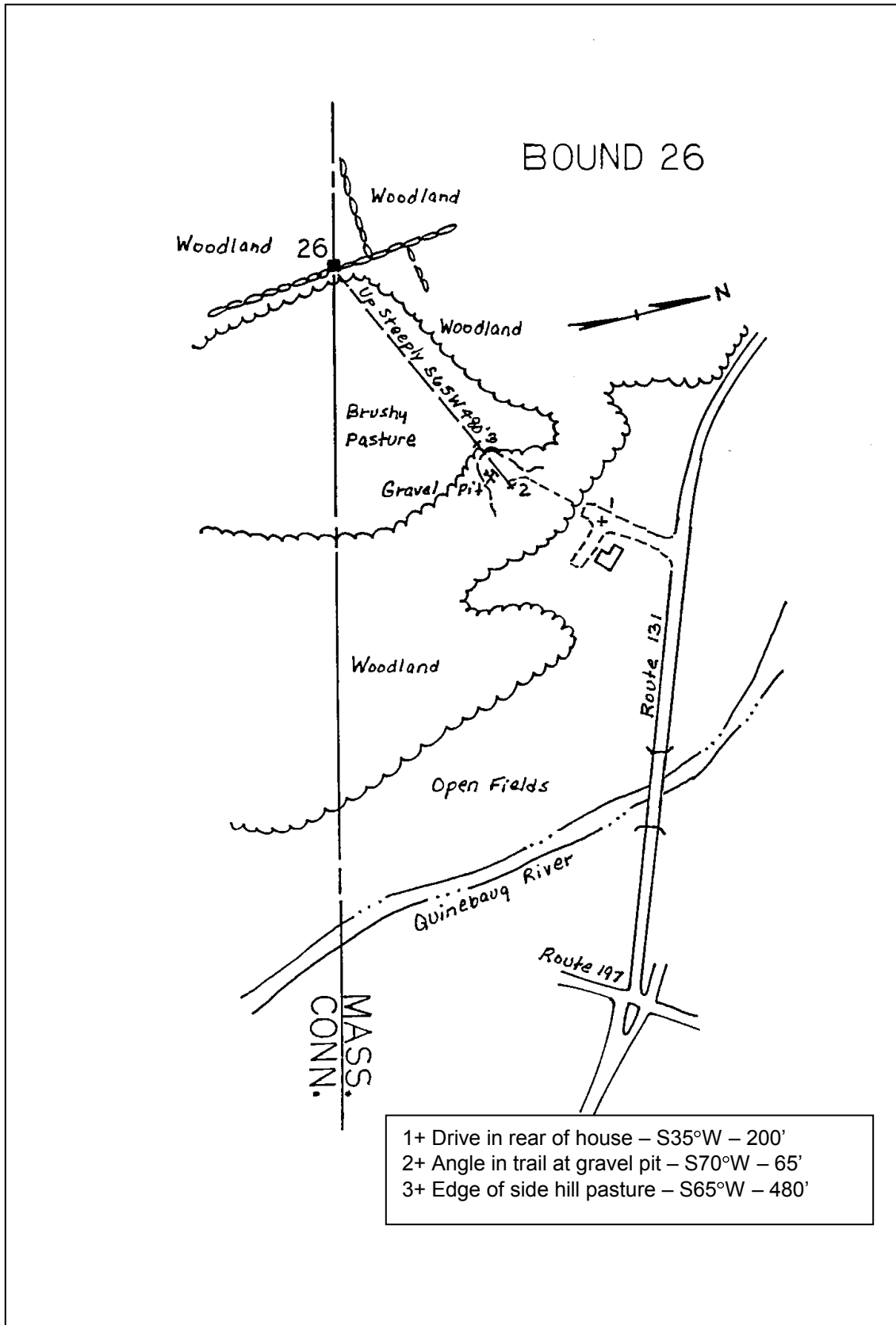
Following sketch, proceed upgrade to westerly end of a gravel pit. Turn southwest on a foot path, follow path southwest, west and northwest to a wall line. Turn west and follow wall line to an intersecting wall running north and south. Turn south and follow wall 150 feet to bound.

The written description and sketch denote different approaches to this monument. Both are valid.

Bound is located on the easterly slope of a wooded hill in a wall at a point 54 feet south of the junction of another wall running westerly up the hill and about 150 feet south of the remains of a wall running easterly.

Bound is marked by a regulation granite monument showing 4.2 feet above the ground and is chipped on the northeast and southeast top corners. The top is 1' X 1' with a ½" x ½" drill hole in the center. It is lettered "T 1906" on the east face, "W" on the west face, "D MASS" on the north face and "CONN" on the south face. The letter "D" over the word "MASS" is backwards.

1906 Station 49810  
Bound #25 - 2,468 Feet East  
Bound #27 - 1,231 Feet West



1997



**Looking Westerly**



**Looking Westerly**



**RESTORATION REPORT - 1998**

**LINE BOUND # 27**

SMALL GRANITE MONUMENT  
SUMMIT

INTERIOR

LINE

From the State Line on Roberts Road at Bound #28, proceed southerly on Fair Gravel Road to intersecting road at the top of a steep rise at 0.15 miles.

Following sketch, proceed easterly and northerly along road to Mace Corporation Adhesives & Coatings Plant and bound.

Bound is located on the summit of a hill in scattered birches 180 feet north of a wall. A lone 36" white pine with top lopped off stands N 45° E, 15 feet from the bound. This is a line summit and with lines cleared would see from Bound #20 to Bound #29.

It was found broken approximately 1' below ground level and leaning 3" to the east during the 1997 Perambulation.

The purpose of this repair was to preserve the original location of the bound by reattaching the broken top to the undisturbed base. The 3' broken off top section was attached with "Sikadur 31 Hi-Mod Gel" two part epoxy.

Continued

**RESTORATION REPORT - 1998**

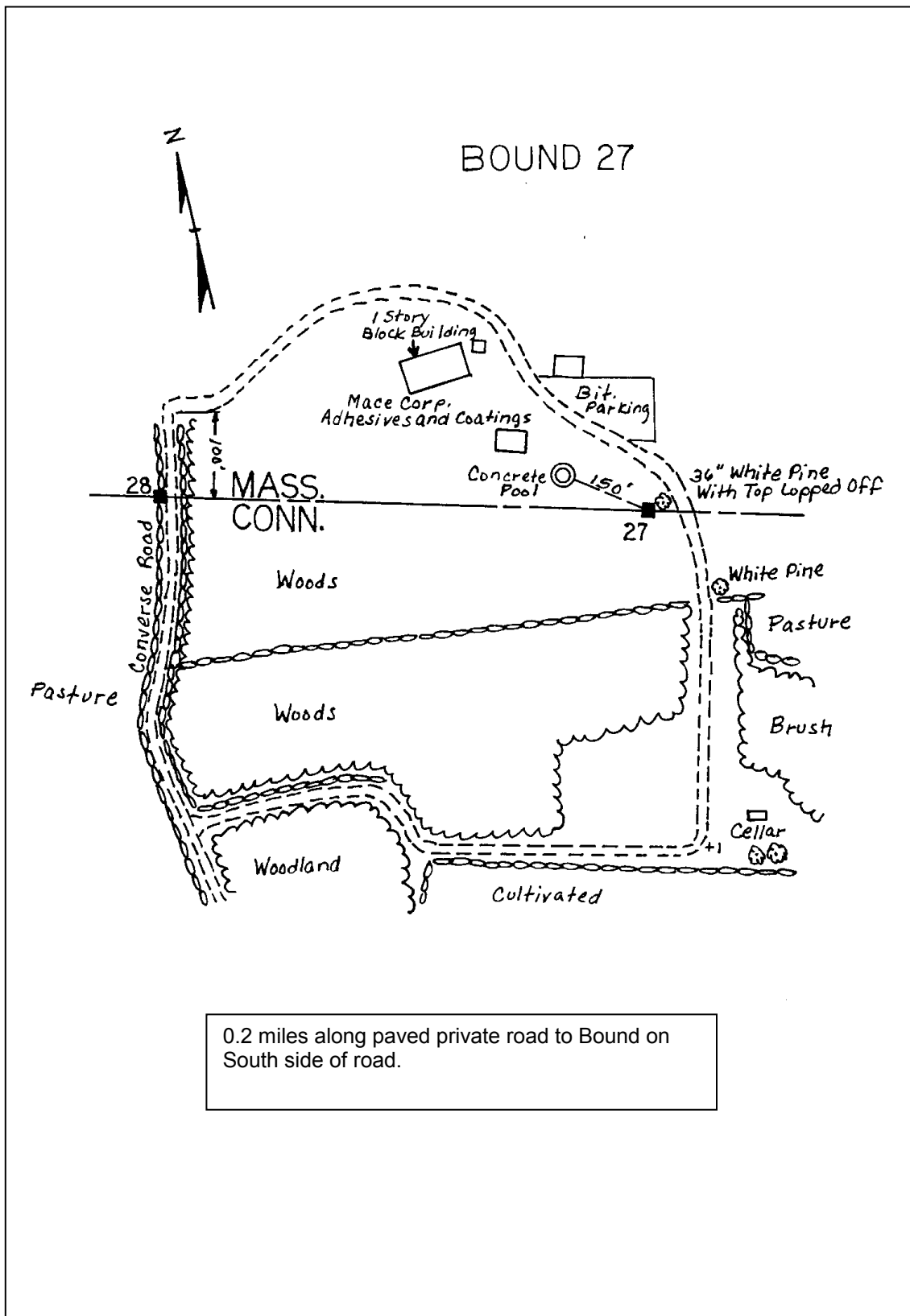
**LINE BOUND # 27**

Continued

To further strengthen and protect the bound a 3' x 3' hole approximately 2 ½' deep was dug around the bound, this was formed and concrete poured to about 18" above the break in the monument. As per repair specifications eight 30" x ½" pieces of rebar were also included in the concrete.

Bound is marked by a granite monument showing 2.0 feet above ground. It is 6" X 13" in section with a ¾" drill hole, 1 inch deep and the letter "F" is cut in the top. It is lettered "M" on the north face and "C" on the south face. It is 5.9 feet long, set in excavation made in gravel. Original monument was set May 13, 1907, with the repair being completed in October 1998.

1906 Station 51041  
Bound #26 - 1,231 Feet East  
Bound #28 - 1,021 Feet West









**Looking Northeasterly**



**Looking Northeasterly**

**LINE BOUND # 28**

REGULATION GRANITE MONUMENT

GRAVEL ROAD

From the intersection of Cortis Road and Roberts Road in the Town of Dudley, about one mile northwest of Quinebaug, proceed southerly on Roberts Road (Converse Road in Connecticut) to bound at 0.3 miles. Road after running level, rises steeply. Bound is at the top of the steep rise where the road levels out again.

Bound is located 24 feet west of the center of the traveled way, 2 feet east of the face of the west highway wall. The road is fairly level opposite the bound which is on the westerly slope of a hill with rising woodland east of the road, pastures and woodland sloping down to a swamp on the west side.

Bound is marked by a regulation granite monument with numerous small chips in it, showing 4.4 feet above the ground. It is lettered "1906" on the west face, "D MASS" on the north face and "W CONN" on the south face. The top is 1' X 1' with a  $\frac{3}{4}$ " X  $1\frac{3}{4}$ " drill hole in the center. It is 9.5 feet long, set in excavation made in gravelly loam and 2.7 feet in ledge. Monument was set on May 12, 1907.

1906 Station 52062  
Bound #27 - 1,021 Feet East  
Bound #29 - 4,004 Feet West



**Looking Southwesterly**



**Looking Southwesterly**



**LINE BOUND # 29**SMALL GRANITE MONUMENT  
SUMMIT

INTERIOR

LINE

From the State Line on the road to East Woodstock (Prospect Street) at Bound #30, proceed easterly on line 372 feet to bound.

Bound is located in a cultivated field on the northerly slope of a hill 300 feet south of Cortis Road. This is a line summit and sees Bounds #27 and #30.

Bound is marked by a granite monument with the top buried 2.0 feet below the surface of the ground. It is 6" X 12" in section with a ½" drill hole 1 inch deep in the top and is lettered "M" on the north face and "C" on the south face. It was originally 6.3 feet long with only the top 2.8 feet remaining set in excavation made in loam, clay and gravel. Monument was originally set May 15, 1907. After being broken off, the top was reset with the top buried 2 feet below the ground on July 25, 1931.

Monument can be recovered only by running a transit survey between Bounds #28 and #30 and digging up the bound. It is of little importance in controlling the line and no attempt was made to recover it during the 1975, 1985 –1986 or 1997 Perambulation.

1906 Station 56066  
Bound #28 - 4,004 Feet East  
Bound #30 - 372 Feet West

**ANGLE BOUND # 30**

REGULATION GRANITE MONUMENT

PAVED HIGHWAY

From the intersection of Cortis Road and Roberts Road in the Town of Dudley, about one mile northwest of Quinebaug, proceed westerly on Cortis Road to an intersection at 0.9 miles. Proceed south 0.1 miles on the road designated in Connecticut as Prospect Street, to bound. Road is ascending slightly to the south at the bound.

Bound is located 32 feet east of the center of the traveled way, 8 feet above the roadway and 4.5 feet west of the center of the east highway wall. Cultivated land rises on the east and woodlands fall away on the west to the swamp at the foot of Mason's Ledges.

Bound is marked by a regulation granite monument showing 3.7 feet above the ground. It is tilted to the west and there is a chip in the southwest top corner. It is lettered "1906" on the west face, "D MASS" on the north face and "W CONN" on the south face. The top is 1' X 1' with a  $\frac{3}{4}$ " X 1  $\frac{3}{4}$ " drill hole in the center. It is 9.5 feet long, set in excavation made in loamy sand and clay. Monument was set May 16, 1907.

1906 Station 56438  
Bound #29 - 372 Feet East  
Bound #31 - 1,522 Feet West

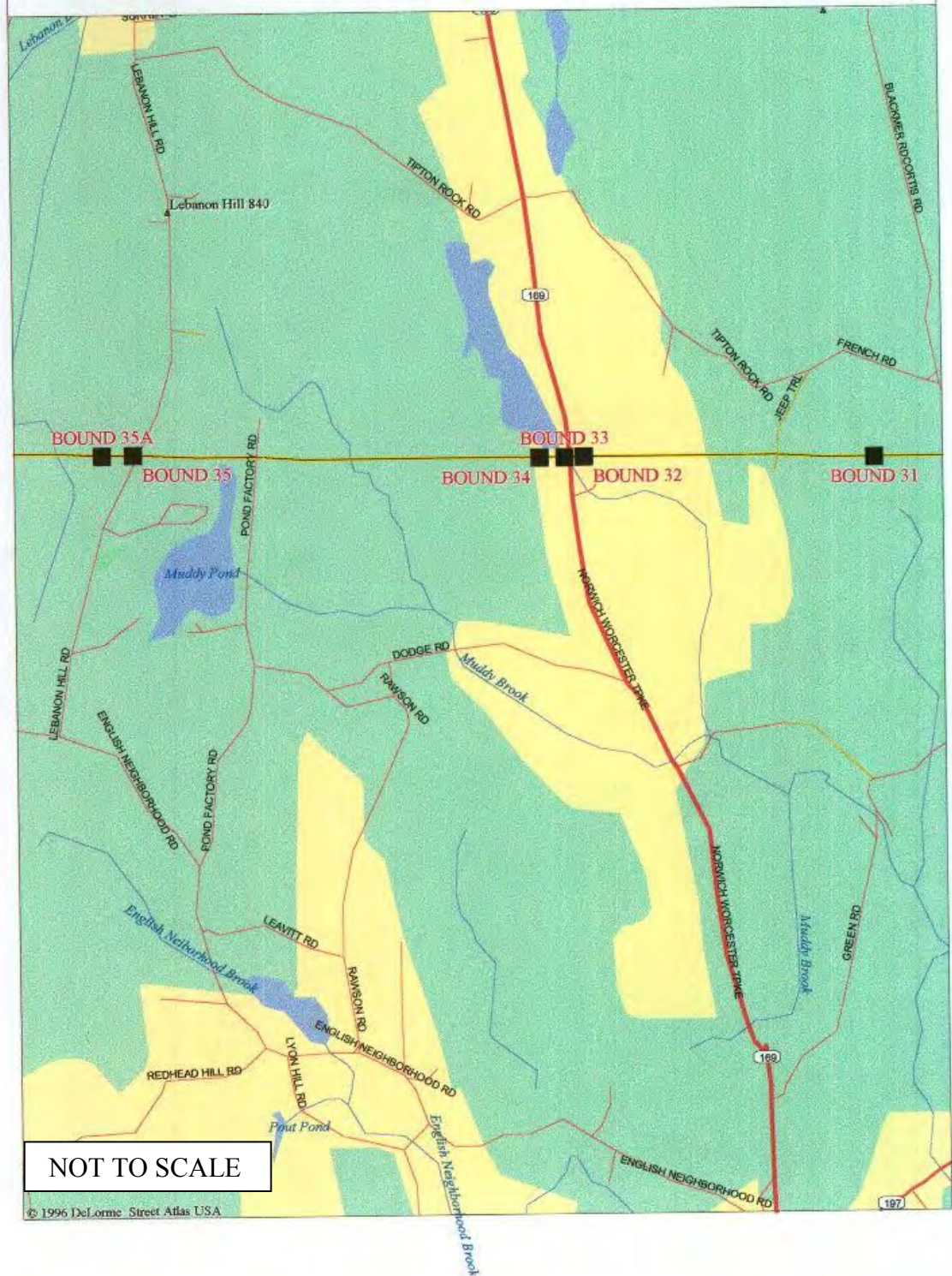


**Looking Northeasterly**



**Looking Northeasterly**

# CT - MA Line Section - E



© 1996 DeLorme Street Atlas USA

1997

CONNECTICUT - MASSACHUSETTS STATE BOUNDARY LINE PERAMBULATION  
CONNECTICUT DEPARTMENT OF TRANSPORTATION

**LINE BOUND #31**

## DUDLEY - SOUTHBRIDGE TOWN CORNER

## REGULATION GRANITE MONUMENT

## INTERIOR TOWN CORNER

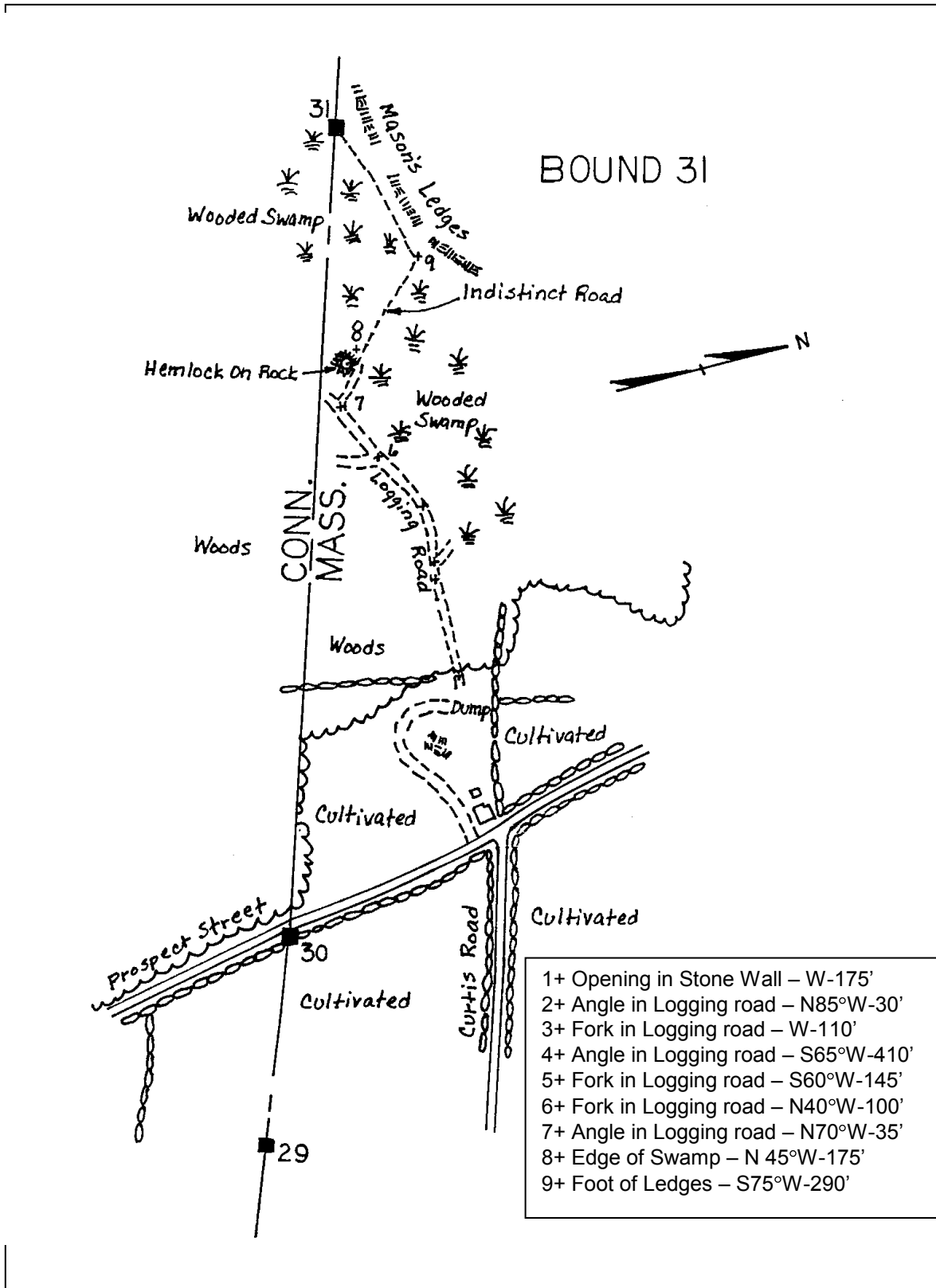
From the intersection of Cortis Road and Roberts Road in the Town of Dudley about one mile northwest of Qunebaug, proceed westerly 0.9 miles on Cortis Road to its intersection with the road designated as Prospect Street in Connecticut, at the property now or formerly of J. Pytko.

Following sketch, proceed westerly along north side of house, across pasture, woods and swamp to bound.

Bound is located 20 feet east of the west edge of a wooded swamp which is at the foot of the talus at the foot of Mason's Ledges, which is about 80 feet high.

Bound is marked by a regulation granite monument showing 3.6 feet above the ground. The top is 1' X 1' with a  $\frac{3}{4}$ " x 1  $\frac{1}{2}$ " drill hole in the center. There is a chip in the northwest corner and the bound is tipped to the northeast. It is lettered "D 1906" on the east face, "S" on the west face, "MASS" on the north face and "W CONN" on the south face. It is 9.9 feet long, set in a circular wooden crib filled with concrete, placed in an excavation made 6 feet in muck. Monument was set May 14, 1907.

1906 Station 57960  
Bound #30 - 1,522 Feet East  
Bound #32 - 4,316 Feet West



1997



**Looking Northwesterly**



**Looking Southerly**

**RESTORATION REPORT - 1999****LINE BOUND # 32**SMALL GRANITE MONUMENT  
SUMMIT

INTERIOR

LINE

From the State Line on Connecticut Route 169 (Woodstock Road in Massachusetts) at Bound #33, proceed easterly on line through light brush and into mowing lot, 297 feet to bound.

Bound is located in a mowing lot on the westerly edge of the slope of a hill, 6 feet east of an 8" cedar tree.

Bound is marked by a 9' regulation granite monument, showing 4 feet above the ground. It is 12" X 12" in section with a 1/2" drill hole 1 inch deep in the top. It is lettered "MASS" on the north face, "CONN" on the south face and "1998" on the east face. Monument was set August 12, 1999.

Former bound was removed from the site.

Connecticut Coordinate Grid  
NAD 83  
N=935838.62  
E=120,1331.97

1906 Station 62245  
Bound #31 - 4,316 Feet East  
Bound #33 - 297 Feet West











**Looking Northwesterly**



**Looking Northwesterly**

**LINE BOUND #33**

REGULATION GRANITE MONUMENT

PAVED HIGHWAY

From the intersection of Connecticut Routes 197 and 169 in North Woodstock, proceed northerly on Connecticut Route 169 to bound at 2.6 miles. Bound is opposite a low point in the highway just beyond a curve to the east.

Bound is located 17 feet west of the center of the traveled way at the north end of a metal beam rail and 50 feet north of a culvert through which a brook flows east from Morse Pond. Woodland rises south of the pond, pasture with old apple trees to the east. Bound is visible from Bound #33.

Bound is marked by a regulation granite monument showing 1.3 feet above the ground. It is tipped to the south and may be broken off below ground level. There is a large chip in the northeast top corner and edge as well as small chips in all corners. The top is 1' X 1' with a 1/2" X 2" drill hole. It has a brass plug set 5" northeast of the drill hole. It is lettered "1906" on the west face, "S MASS" on the north face and "W CONN" on the south face. It is 9.4 feet long, set in excavation made in loam, sand and loose rock. Monument was set May 16, 1907. It replaced the old 1826 monument which was located on the opposite side of the highway.

1906 Station 62573  
Bound #32 - 297 Feet East  
Bound #34 - 611 Feet West



**Looking Northerly**



**Looking Northerly**

**LINE BOUND #34**SMALL GRANITE MONUMENT  
SUMMIT

INTERIOR

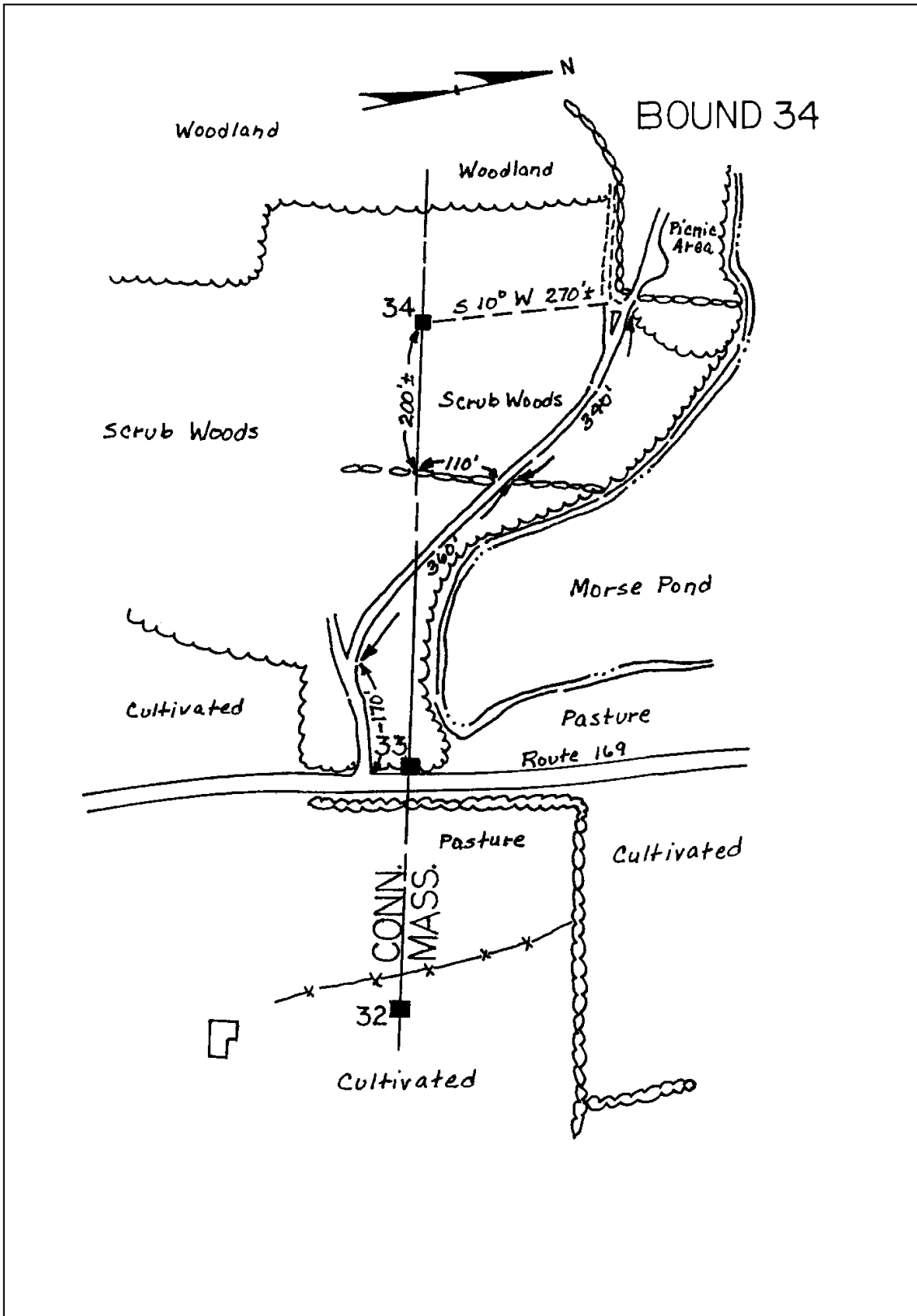
LINE

From the State Line on Connecticut Route 169 at (Woodstock Road in Massachusetts) at Bound #33, following sketch, proceed westerly along wood road and southerly through woodlands to the bound.

Bound is located 200 feet west of a stone wall and about 1 foot below the line summit in heavy woodlands. With line cleared, it sees Bounds #32, #33, and #35.

Bound is marked by a granite monument showing 1.7 feet above the ground. It is 6 ½" X 11" in section with no drill hole in the top and is lettered "M" on the north face and "C" on the south face. It is 5.0 feet long, set in excavation made in sandy loam. Monument was set May 17, 1907.

1906 Station 63184  
Bound #33 - 611 Feet East  
Bound #35 - 6,053 Feet West



1997





**Looking Southwesterly**



**Looking Southwesterly**

**LINE BOUND # 35**

REGULATION GRANITE MONUMENT

PAVED HIGHWAY

From the intersection of Lebanon Hill Road and Alpine Drive in the Town of Southbridge, proceed southerly on Lebanon Hill Road (formerly Elm Street) 1.9 miles to the bound.

Bound is located 16 feet west of the center of the traveled way. The highway at this point descends gently to the south curving west about 50 feet south of the bound and winding east again 100 feet further south. There is a 1 story house on the east side of the highway about 200 feet north of the line. Woodland slopes down to the east. West of the bound there is level woodland for 75 feet and then a small valley. Southeast of the bound there is a small shingled cottage which sets about 25 feet below road level.

Bound is marked by a regulation granite monument showing 4.2 feet above the ground on the north and west sides, 5.7 feet on the south and east sides, and is tipped slightly to the south. The top is 1' X 1' with a ½" x 1 ½" drill hole in the center. The monument is smooth faced on all sides on the upper 4' portion. It is lettered "1906" on the east face, "S MASS" on the north face and "W CONN" on the south face. It is 9.6 feet long, set in excavation made in loam and ledge. Monument was set May 18, 1907.

1906 Station 69237  
 Bound #34 - 6,053 Feet East  
 Bound #35A- 311 Feet West  
 Bound #36 - 2,749 Feet West



**Looking Westerly**



**Looking Westerly**

**LINE BOUND #35 A**

DRILL HOLE  
SUMMIT

INTERIOR

LINE

From the State Line on Lebanon Hill Road at Bound #35, proceed westerly on line through woodland 311 feet to bound.

Bound is located near the northern end of an outcropping of ledge in woodland showing about 25 feet in a north - south direction on the western brow of Lebanon Hill.

Bound is marked by a 3/4" drill hole sunk 2" into the sloping top of the outcropping ledge, enclosed in a 4" square. It is under a stone heap.

Bound is referenced by a 3/4" drill hole, 1 1/2" deep (#35A Random Line) 18.89 feet south of the bound on the highest and largest part of the outcrop, which is on the random line of the 1906 survey.

1906 Station 69548  
Bound #35 - 311 Feet East  
Bound #36 - 2,438 Feet West

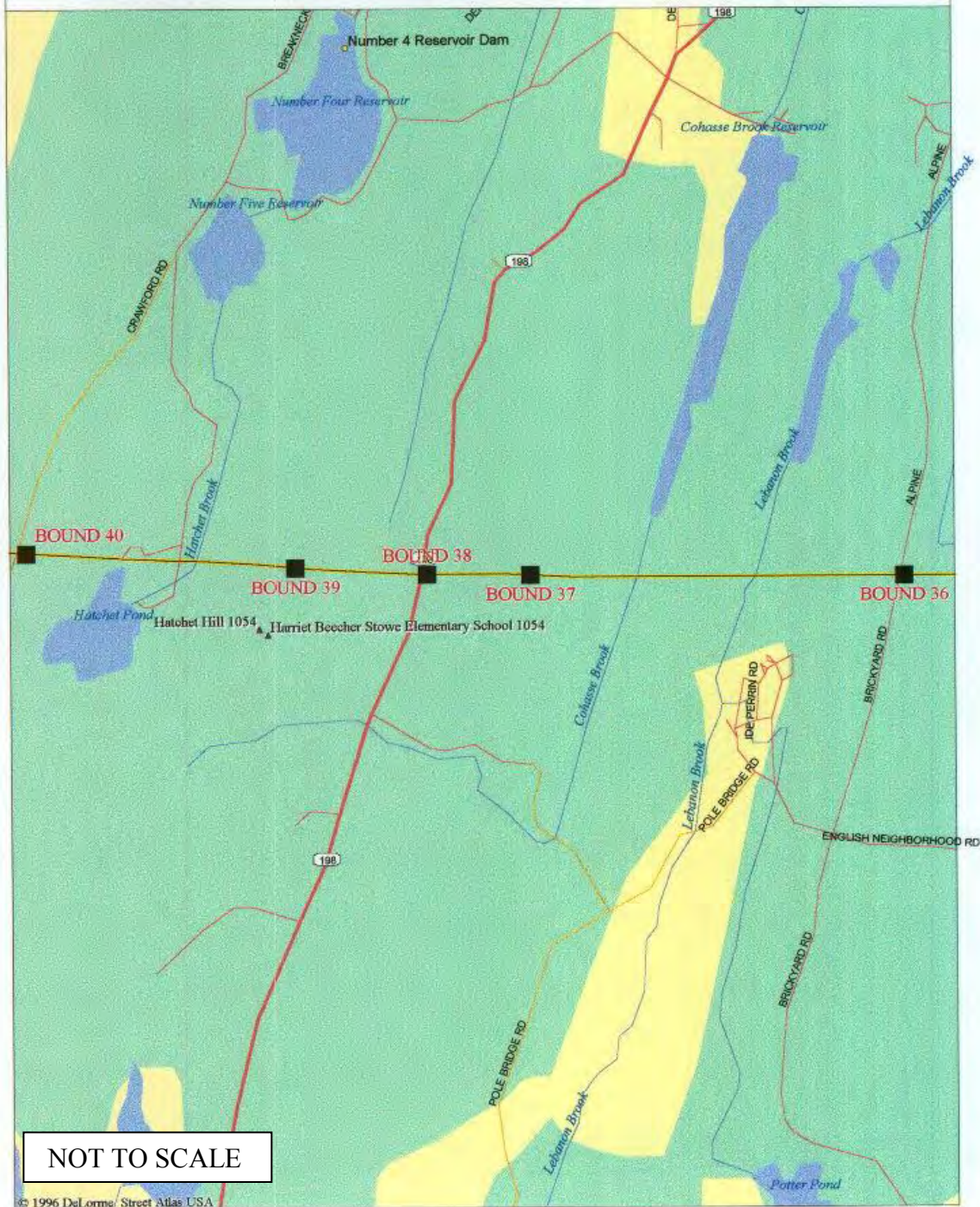


**Aerial View**



**Looking Northwesterly**

# CT - MA Line Section - F



1997

CONNECTICUT - MASSACHUSETTS STATE BOUNDARY LINE PERAMBULATION  
CONNECTICUT DEPARTMENT OF TRANSPORTATION

**RESTORATION REPORT - 1998****LINE BOUND # 36**

REGULATION GRANITE MONUMENT

PAVED HIGHWAY

From the intersection of Lebanon Hill Road and Alpine Drive in the Town of Southbridge, proceed southerly on Alpine Drive 1.9 miles to bound. The highway is generally level to a point 100 feet north of the bound where it starts a long ascent to the south.

Bound is located 10.5 feet east of the center of the traveled way and 100 feet south of a gravel drive leading west to Spinney Farm. There is woodland on either side of the road, dropping sharply to the east and west.

The 1976 Perambulation revealed that the 9' regulation granite monument set in 1906 had its top 3.5' broken off. At some point between 1976 and 1986 Perambulation a brass disk was set in the top of the remaining portion of the monument.

During the 1997 Perambulation visit the bound was found to have a large chip off the southwest corner and to be leaning severely to the northeast.

Since no record was found showing that the bound had been moved and the present location agrees with previous photographs and descriptions, its correct position was assumed to be the location of the base held plumb.

Continued

Continued

The purpose of this repair was to establish a plumb position holding the base and lower the bound to prevent further vehicular collisions. The repair consisted of first setting ties to bound in present location then excavating around bound deep enough for bound to be plumbed. It was braced, tied off again in plumb position, and approximate azimuth was measured along the bound north face to facilitate correct positioning when it was reset.

The bound was removed and its hole excavated an additional 2' deeper. The bound was then reset using the ties from the plumbed position. A standard manhole rim and cover were installed over the bound and back filled with bituminous cold patch to provide a suitable connection with the road surface.

Bound is marked by a brass disk in the center of the monument labeled "State Line Bound" and is stamped "CONN MASS 36". It has a large chip off the southwest corner.

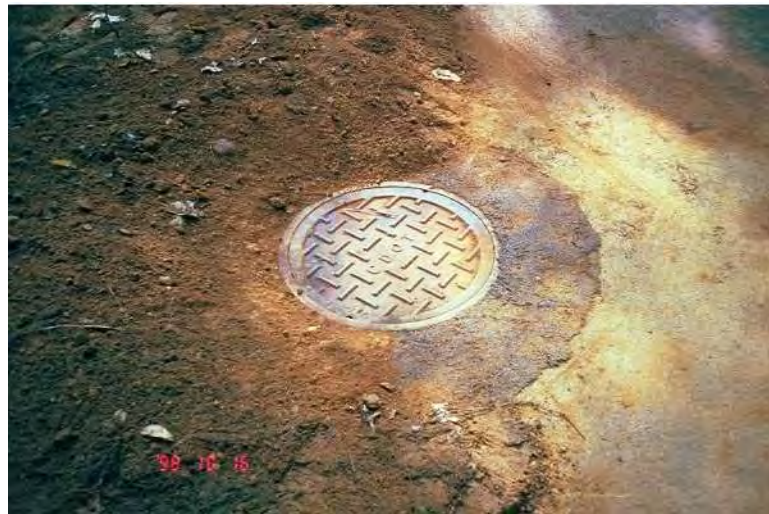
1906 Station 71986  
Bound #35 - 2,749 Feet East  
Bound #35A-2,438 Feet East  
Bound #37 - 5,755 Feet West











**Looking Southeasterly**



**Looking Southeasterly**

**LINE BOUND #37**SMALL GRANITE MONUMENT  
SUMMIT

INTERIOR

LINE

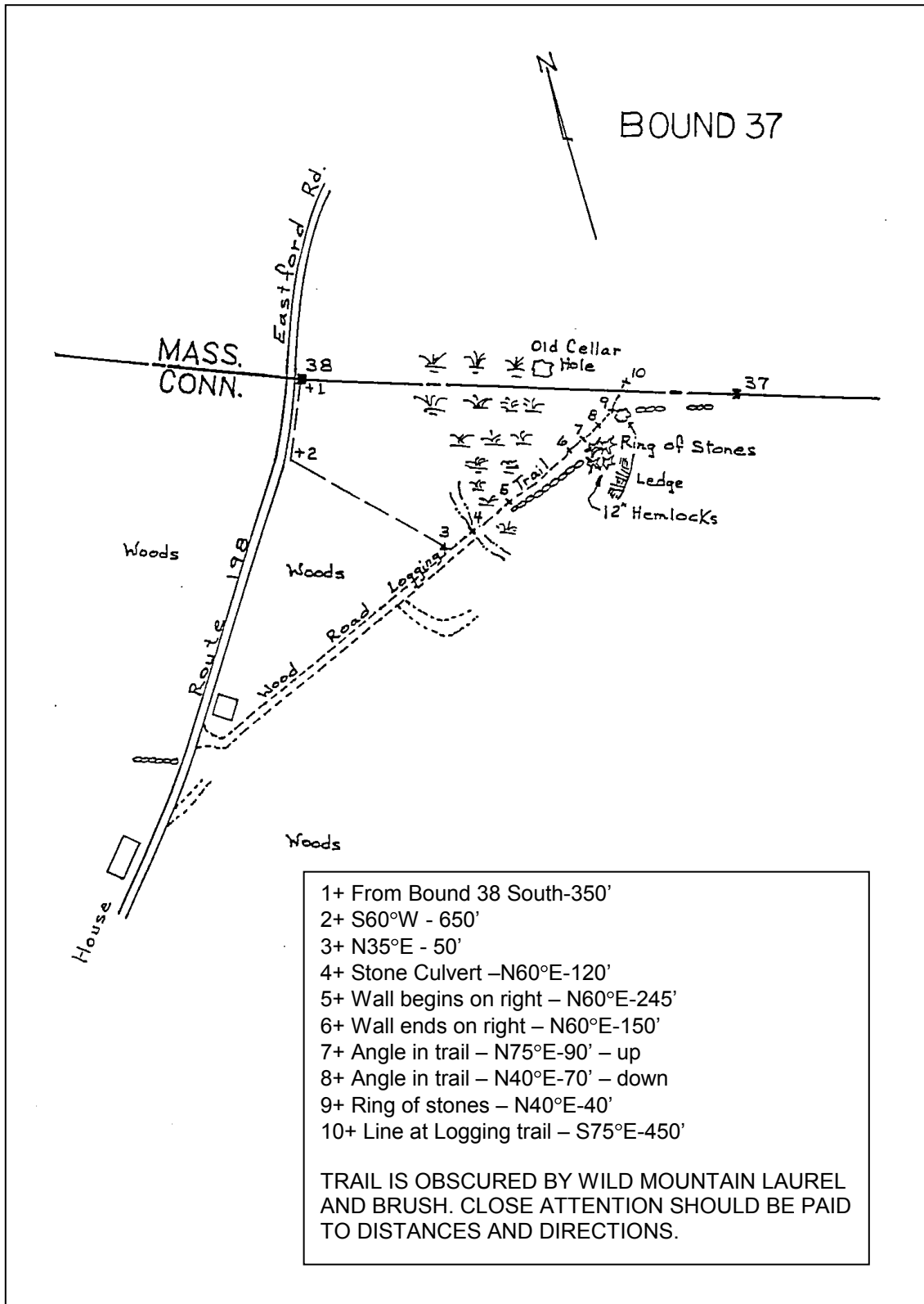
From the State Line on Connecticut Route 198 (Eastford Road) at Bound #38, proceed southerly on Eastford Road 0.2 miles to intersecting wood road opposite the southeast corner of an apple orchard and at a point where the highway runs west of and several feet above the old road.

Following sketch, proceed northeasterly on wood road and easterly through woodland to bound.

Bound is located at the summit of a ridge in thick woodland at a point from which the land is level toward the north, rises to the south, and descends gradually to the east and west.

Bound is marked by a granite monument showing 1.9 feet above the ground. It is 7" X 12" in section with a 1/2" drill hole, 1 inch deep in the top and lettered "M" on the north face and "C" on the south face. The "M" & "C" are faint, but visible. It is 5.4 feet long, set in excavation made in sandy loam. Monument was set May 20, 1907.

1906 Station 77741  
Bound #36 - 5,755 Feet East  
Bound #38 - 1,587 Feet West





**Looking Northerly**



**Looking Northerly**

**LINE BOUND #38**

REGULATION GRANITE MONUMENT

PAVED HIGHWAY

From the intersection of Dennison Drive and Eastford Road in the Town of Southbridge, proceed southerly on Eastford Road to bound at 1.7 miles. Highway curves to the east, north of the bound and is ascending slightly to the south opposite the bound.

Bound is located 19 feet east of the center of the traveled way of Eastford Road. Woodland descends on the east side of the highway to a wide swamp and ascends to the west.

Bound is marked by a regulation granite monument showing 4.6 feet above the ground. The top is 1' X 1' with a ½" x 2" drill hole in the center. It has a brass plug 4" northeast of the drill hole. There is a large chip in the southeast top corner. It is lettered "1906" on the west face, "S MASS" on the north face, and "W CONN" on the south face. It is 9.6 feet long, set in excavation made in sandy loam and gravel. Monument was set May 20, 1907 in the exact location of the old 1826 monument.

1906 Station 79328  
Bound #37 - 1,587 Feet East  
Bound #39 - 1,977 Feet West





**Looking Northeasterly**



**Looking Northeasterly**

**LINE BOUND # 39**SMALL GRANITE MONUMENT  
SUMMIT

INTERIOR

LINE

From the State Line on Connecticut Route 198 (Eastford Road) at Bound #38, following sketch, proceed northerly on Eastford Road 200 feet. Proceed westerly across low woodland to intersecting stone walls. Continue westerly following stone wall up hill to bound.

Bound is located in woodland at the line summit of Hatchet Hill, 32 feet north of the center of a wall.

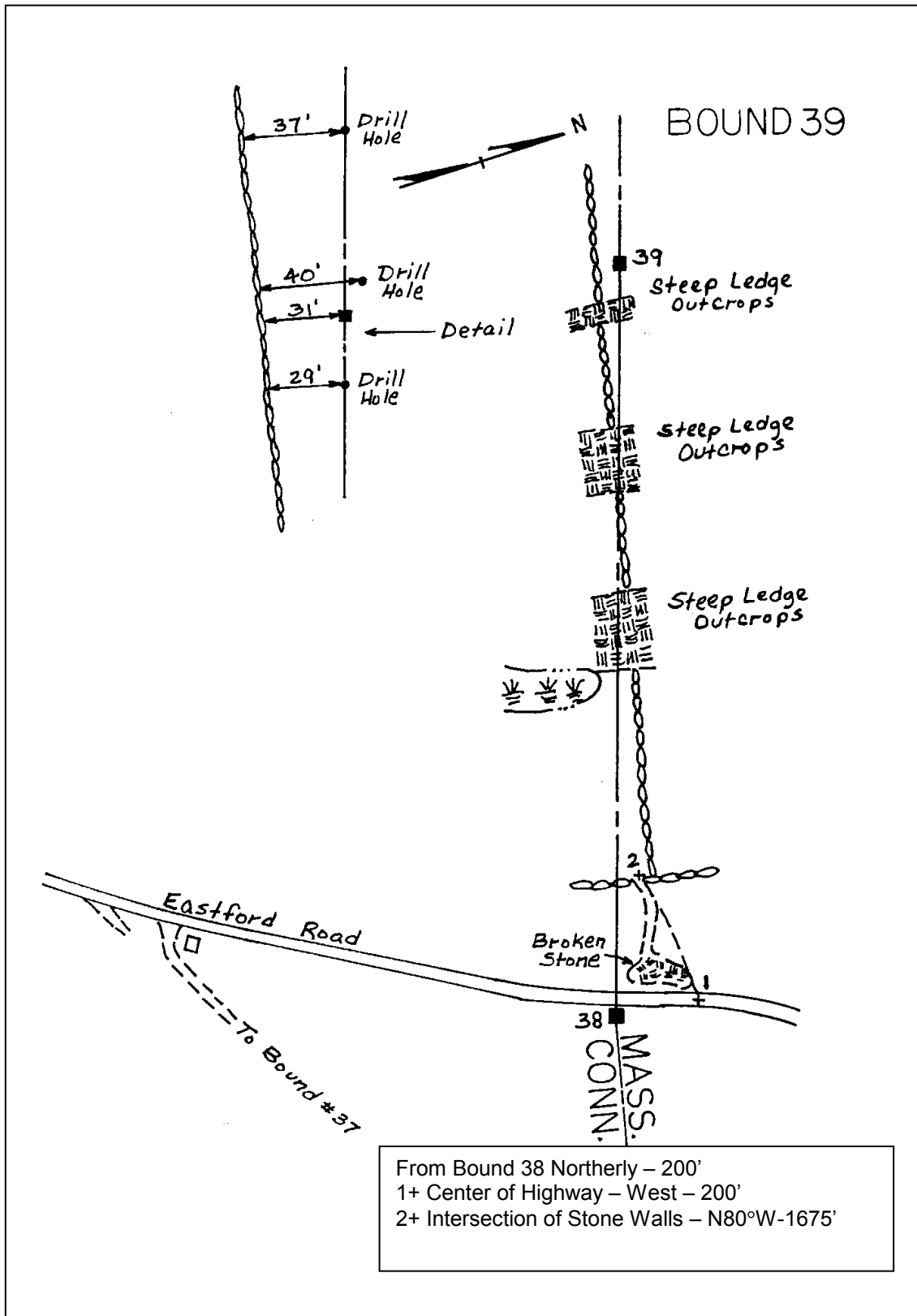
Bound is marked by a granite monument showing 2.0 feet above the ground. It is 6" X 9" in section with a ½" drill hole ½ inch deep in the top and lettered "M" on the north face and "C" on the south face. The "C" and "M" are faded from weathering. It is 5.3 feet long, set in excavation made in yellow loam with its base resting on ledge and surrounded by an earthen mound 7 feet in diameter and 1.5 feet high. Monument was set May 20, 1907.

**Bound is referenced as follows:**

- 39A On True Line 69.71 feet west of bound, a ½" drill hole, 1 ½ inches deep, 1 ¼ feet south of the north end of a raised outcrop of ledge 6 feet long, at a point 37 feet north of the center of the wall.
- 39B Northwest 13.24 feet from bound, a ¾" drill hole, 1 1/4 inches deep, enclosed in a 3" X 4" square cut in top of a level portion of an outcrop near its southern end. This point marks Station 1 of the Random Line, 40' north of the center of the wall.
- 39C On True Line 24.25 feet east of bound, a ½" drill hole, 1 ¼ inches deep, near northern end of a flat outcrop of ledge, 29 feet north of the center of the wall.

All reference points are under small stone heaps erected in 1953.

1906 Station 81305  
Bound #38 - 1,977 Feet East  
Bound #40 - 4,311 Feet West





**Looking Northerly**



**Looking Northerly**



**Aerial View**



**Looking Westerly**



**Aerial View**



**Looking Easterly**



**Aerial View**



**Looking Westerly**

**LINE BOUND # 40**

REGULATION GRANITE MONUMENT

ABANDONED ROAD

From the intersection of South Street and Breakneck Road in Southbridge, (600' east of the Sturbridge - Southbridge Town Line), proceed southerly on Breakneck Road 2.2 miles to the westerly arm of No. 5 Reservoir.

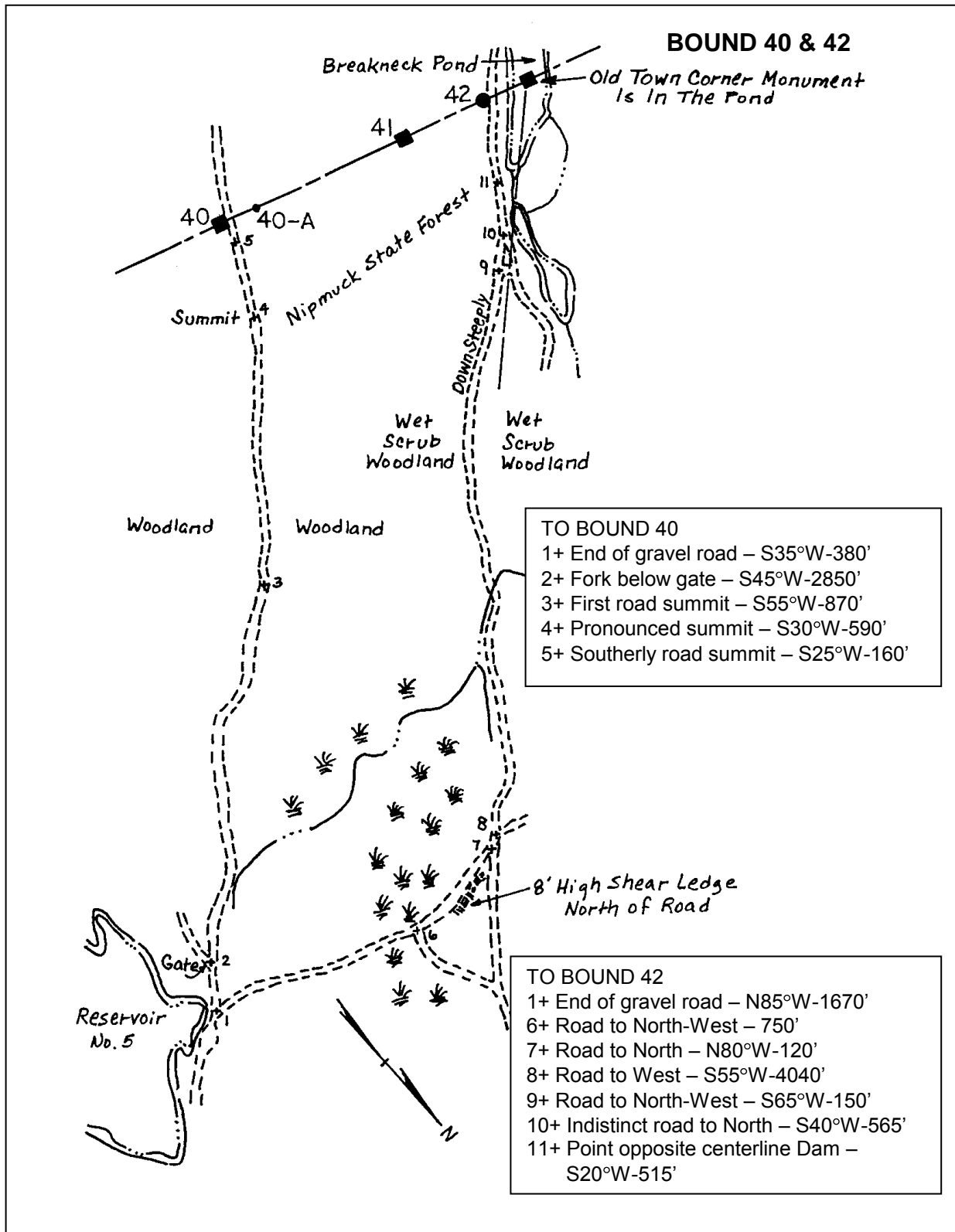
Following sketch, proceed southerly on abandoned road, 5,470 feet to the bound. Road rises steeply, southerly for first 2,850 feet, then rises more gradually to the most southerly road summit 160 feet north of the bound.

Bound is located 13 feet east of and 4 feet above the center of the wood road at a point where the road is in a 9 foot wide cut between ledges. Woodland descends gradually east of the bound and west of the road is level for 175 feet and then descends precipitously.

Bound is marked by a regulation granite monument showing 4.1 feet above the ground and chipped on all top corners. There is a large chip on the northwest corner. The top is 1' X 1' with a  $\frac{3}{4}$ " x 1  $\frac{1}{2}$ " drill hole in the center. It is lettered "1906" on the west face, "S MASS" on the north face and "W CONN" on the south face. It is 9.5 feet long, set in excavation made in rocky loam and 3 feet in ledge. Monument was set May 21, 1907.

1906 Station 85616  
Bound #39 - 4,311 Feet East  
Bound #40A- 172 Feet West  
Bound #41 - 1,327 Feet West





1997



**Looking Southerly**



**Looking Southerly**

# CT - MA Line Section - G



1997

CONNECTICUT - MASSACHUSETTS STATE BOUNDARY LINE PERAMBULATION  
CONNECTICUT DEPARTMENT OF TRANSPORTATION

**LINE BOUND # 40A**

## DRILL HOLE

## INTERIOR LINE SUMMIT

From the State Line on Breakneck Road at Bound #40, proceed westerly on line 172 feet over level land to bound.

Bound is located at the western brow of the hill, 1 foot north of the southern end of the summit of a ledge outcrop which extends level to the north and drops off to the south. Level land to the north and east drops off to the south and descends precipitously to the west. With line cleared, it would see Bound #39 to the east and Bound #42A to the west.

Bound is marked by a  $\frac{3}{4}$ " drill hole sunk 2.5 inches deep into the top of the outcropping ledge. It is covered with a stone heap.

Bound is referenced by a  $\frac{3}{4}$ " drill hole enclosed in a 2" X 2.5" square (#40A Random Line) 6.71 feet north, northeast of the bound, cut in the same outcrop of ledge, 0.3 feet west of its eastern edge, which is on the random line of the 1906 survey. It is covered with a stone heap.

1906 Station 85788  
Bound #40 -172 feet east  
Bound #41 -1,155 feet west



**Aerial View**



**Looking Northwesterly**

**LINE BOUND # 41**

SOUTHBRIDGE - STURBRIDGE TOWN CORNER

REGULATION GRANITE MONUMENT

INTERIOR TOWN CORNER

From the State Line on an abandoned road near the Woodstock - Union Town Line at Bound #42, proceed easterly on line 642 feet up steep laurel covered wooded hillside, across narrow swamp and up hill more gradually in woodland to bound.

Bound is located in woodland at the westerly edge of a relatively flat table on the western slope of a hill. Woodland is level for 200 feet to the east, to the foot of a steep slope, relatively level to the north and south and descending to the west.

Bound is marked by a regulation granite monument showing 4.1 feet above the ground, the top is 1' x 1' with a 3/4" x 1 1/2" drill hole in the center. It is lettered "S 1906" on the east, "S" on the west, "MASS" on the north and "W CONN" on the south face. It is 9.0 feet long, set in excavation made in sandy loam. Monument was set May 21, 1907.

1906 Station 86943  
Bound #40 -1,327 feet east  
Bound #40A -1,155 feet east  
Bound #42 - 642 feet west



Looking Northerly



Looking Northerly

**LINE BOUND # 42**

## WOODSTOCK-UNION TOWN CORNER-WITNESS MARK

## REGULATION GRANITE MONUMENT

## INTERIOR TOWN CORNER

From the intersection of South Street and Breakneck Road in Southbridge

600 feet east of the Sturbridge - Southbridge Town Line. Proceed southerly on Breakneck Road 2.2 miles to the westerly arm of No. 5 Reservoir.

Following sketch (page 107), proceed westerly and southerly over relatively wet woodland on undulating wood road, passable in dry weather, 7,800 feet to bound.

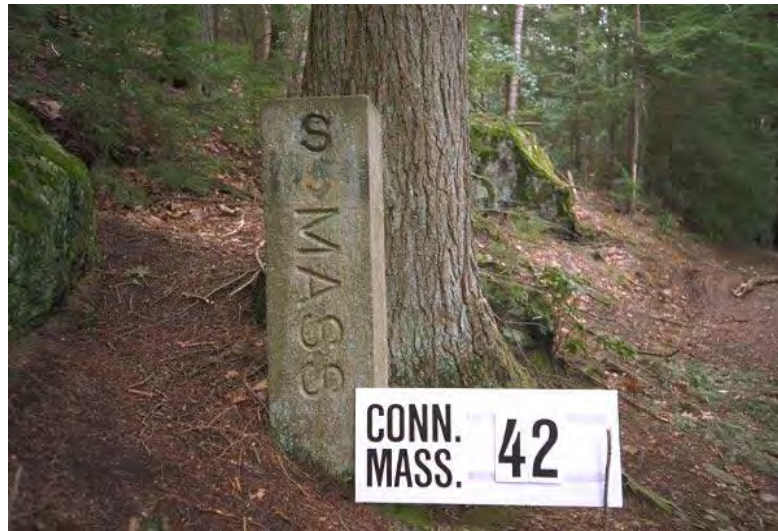
Bound is located 9 feet east of the center of wood road and 15 feet east of the east shore of Breakneck Brook Reservoir at a point 515 feet south of Cheney Dam. Woodland rises abruptly east of the bound.

Bound is witness mark for the town corner which is marked by a stone monument in the reservoir. This monument was submerged prior to the 1906 survey and has never been accurately located.

Bound is marked by a regulation granite monument showing 3.6 feet above the ground. The top is 1' x 1' with a 3/4" x 1 1/2" drill hole in the center. It is tilted to the north and west and there is a large chip out of the lower southeast corner. It is lettered "1906" on the east face, "S" MASS" on the north face and "W" CONN" on the south face. It is 9.3 feet long, set in excavation made in sandy loam. Monument was set May 22, 1907.

1906 Station 87585  
Bound #4 – 642 feet east  
Bound #43 - 5,461 feet west  
Bound #42A - 2,606 feet west





**Looking Southerly**



**Looking Southerly**

**LINE BOUND # 42A**

## DRILL HOLE

## INTERIOR LINE SUMMIT

From the State Line on Mashapaug Road at Bound #44, proceed northeasterly 0.5 miles on Mashapaug Road, passing road to Bound #43, to Intersection 780 at a well defined logging road, just beyond first road summit. Proceed easterly 0.2 miles on logging road through woodland to point where downed trees close road at angle in stone walls.

Following sketch, continue easterly on logging road crossing brook and then ascending easterly, skirting south of first summit and crossing saddle to northerly summit of sharp ridge and bound.

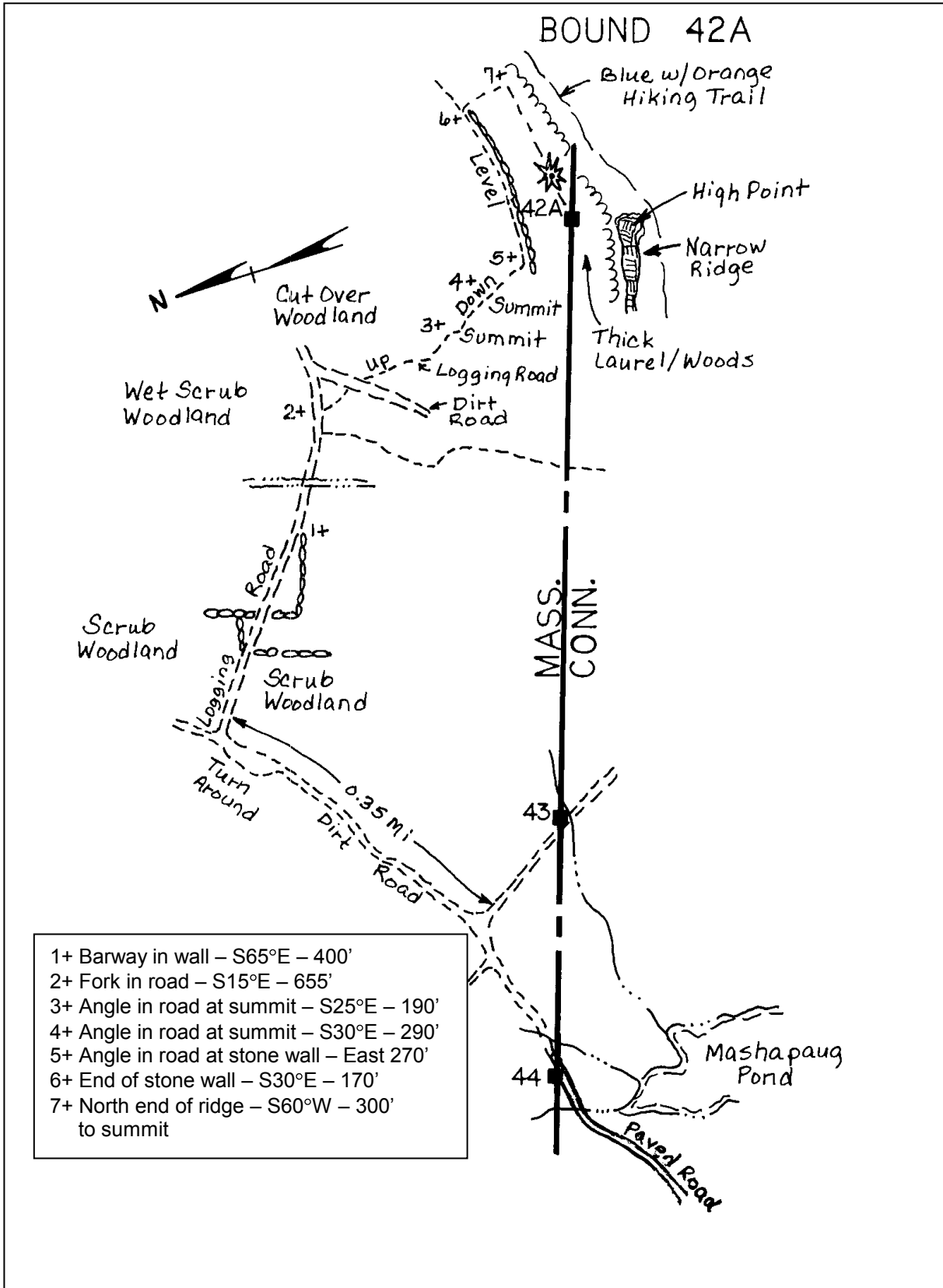
Bound is located at the westerly edge of the narrow flat top of an outcrop of ledge which slopes abruptly to the west, 25 feet west of and slightly below the exact line summit which is at the easterly edge of the top above the precipitous east face. The line summit is about 40 feet north of, and about 10 feet below the ledge outcrop forming the summit of the hill. Woodland drops abruptly to the east and west and more gradually to the north and south. With line cleared it would see Bound #40A and the line for miles to the west.

Bound is unmarked, except by a reference point 3.77 feet north of the true line on the random line of 1906. It is 3/4" drill hole sunk 2 inches into the ledge and enclosed in a countersunk 2" square. Ledge slopes abruptly to the west, the section at the drill hole being about level with the ground to the east. It is under a small stone heap.

Reference Mark "1": From 18" White Pine, S 50° W – 21' ± to Drill Hole.

Reference Mark "2": From Ledge Summit (High Point) @ NW side Blue & Orange Hiking Trail, N 5° E – 45' ± to Drill Hole.

1906 Station 90191  
Bound #42 - 2,606 feet east  
Bound #43 - 2,855 feet west





**Aerial View**



**Looking Southwesterly**

**LINE BOUND #43**

REGULATION GRANITE MONUMENT

GRAVEL ROAD

From the State Line on Mashapaug Road at Bound #44, proceed northeasterly 0.15 miles to Intersection 736 at a gravel road. Proceed southeasterly 0.1 miles on a gravel road to bound. Road ascends southeasterly from Intersection 736 to a high point 100 feet northwest of the bound.

Bound is located 21 feet northeast of the center of the road and 61 feet northwest of a small box culvert. It is 43 feet northeast of the center of the wall on the opposite side of the road. There is level land on both sides of the road.

Bound is marked by a regulation granite monument showing 4.0 feet above the ground and tipped slightly to the west. The top is 1' x 1' with a 1/2" X 1 1/2" drill hole in the center. Bound has numerous chips in all corners. It is lettered "1906" on the west face, "S" MASS" on the north face and "U" CONN" on the south face. It is 9.3 feet long, set in excavation made in yellow loam and clay. Monument was set May 23, 1907.

1906 Station 93046  
 Bound #42 - 5,461 feet east  
 Bound 42A - 2,855 feet east  
 Bound #44 - 1,181 feet west



**Looking Northeasterly**



**Looking Northeasterly**

**LINE BOUND #44**

REGULATION GRANITE MONUMENT

PAVED ROAD

Beginning from the center of the span of the Route 171 Bridge (Holland Road) over Interstate 84 in the Town of Union, Connecticut, proceed 0.1 miles easterly to Intersection of Route 171 with Service Road. Continue northeasterly along the Service Road 0.3 miles to Mashapaug Road. Thence easterly and northeasterly 0.7 miles on Mashapaug Road to bound on left.

Bound is located 38 feet north of the center of the traveled way and 74 feet northwest of the north headwall of a culvert. Undulating land lies north of the bound with a swamp on the opposite side of the road.

Bound is marked by a regulation granite monument showing 3.9 feet above the ground. It is lettered "1906" on the east, "S" MASS." on the north and "U CONN." on the south face, and has small chips along the southeast and southwest corner. Mon. is slightly to the south. It is 9.7 feet long set in excavation made in gravel and loose stones.

1906 Station 94227  
 Bound #43 -1,181 feet east  
 Bound #44A - 1,682 feet west  
 Bound #45 - 2,501 feet west



**Looking Northerly**



**Looking Northerly**



**LINE BOUND # 44A**

## DRILL HOLE

## INTERIOR LINE SUMMIT

From the intersection of the Service Road on the easterly side of Interstate 84 and Mashapaug Road, in the Town of Union, proceed easterly 0.15 miles on Mashapaug Road to a woods trail on the north side of said road. The trail is 40 feet east of S.N.E.T. Pole #7.

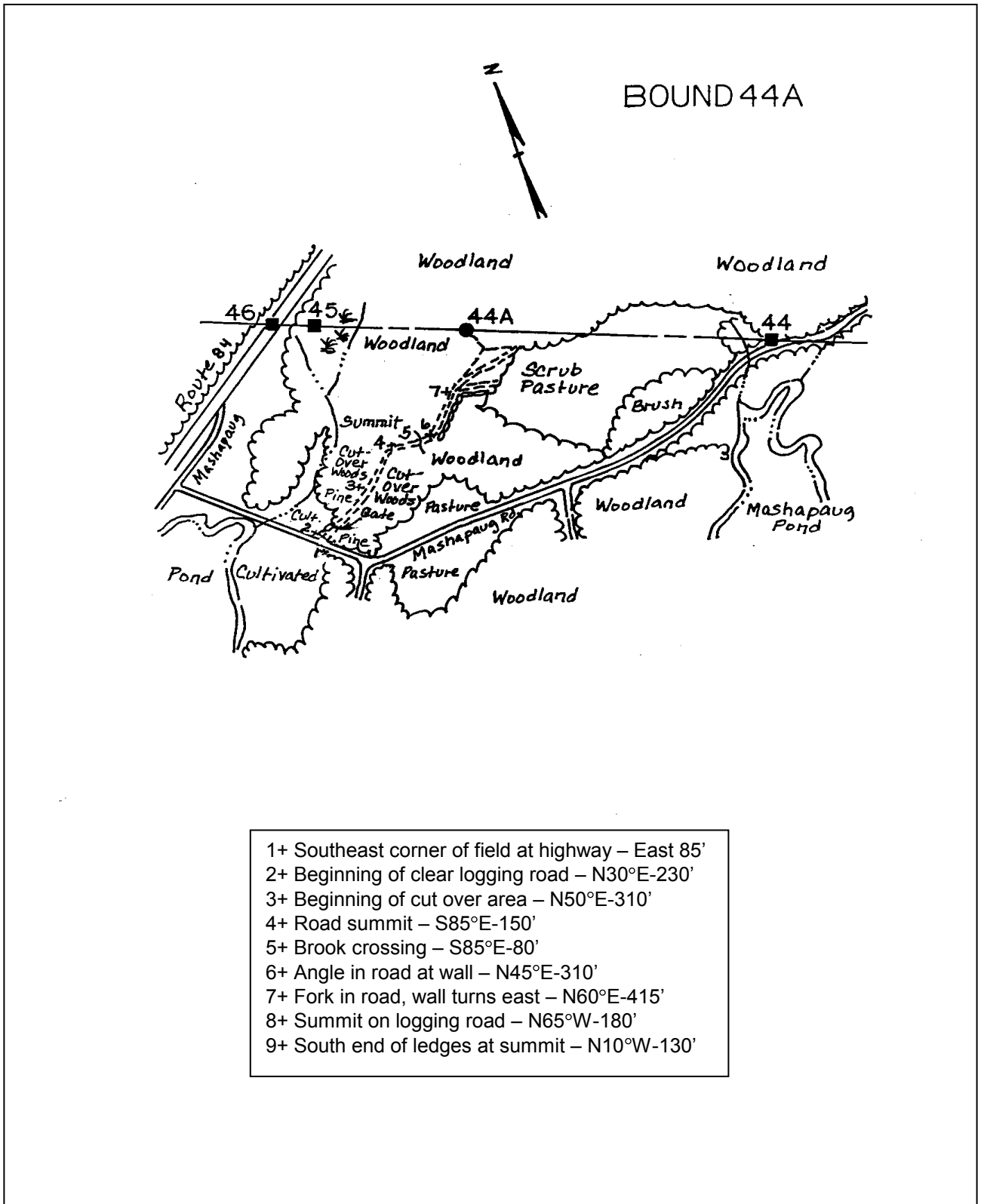
Following sketch, enter woodland, and proceed upgrade through woods following trail skirting southeasterly foot of steep hillside. Proceed westerly on line up steep hillside, passing south of steep ledges to summit and across hilltop to the westerly brow and bound in the center of the northerly outcrop of bare ledge.

Bound is located at the absolute summit along the western brow of a wooded hill in the top of an outcrop of ledge with rounded top about 25 feet north and south by 6 to 8 feet wide. There is an old wire line fence 8 feet south of the bound. With line cleared it would see Bound #42A to the east and the line for miles to the west.

Bound is marked by a 3/8" drill hole sunk 1 3/4" into the ledge. It is under a small stone heap.

Bound is referenced by a 1/2" drill hole, 1 1/4 inches deep, enclosed in a 2 1/2" X 3 1/2" countersunk square, (#44A Random Line) 1.42 feet northeast of the bound. This point is Station 115 on the random line of the 1906 survey.

1906 Station 95909  
Bound #44 - 1,682 feet east  
Bound #45 - 819 feet west





**Looking Northeasterly**



**Looking Northeasterly**

**LINE BOUND #45**

## STURBRIDGE - HOLLAND TOWN CORNER

REGULATION GRANITE MONUMENT

INTERIOR TOWN CORNER

From the State Line on Interstate 84, at Bound #46, proceed easterly on line across swamp along highway and through low, level land, 228 feet to the bound.

Bound is located at the western edge of swampy land, which extends east to Lead Mine Brook. It is 37 feet southeast of a culvert-carrying brook. Bound is 1 foot northwest of a Department of Transportation boundary monument and highway fence post.

Bound is marked by a regulation granite monument showing 3.6 feet above the ground. The top of the monument is 1' x 1' with a 3/4" plugged drill hole in the center. It is lettered "H 1906" on the west face, "S" on the east face, "MASS" on the north face and "U CONN" on the south face. There is a large chip off the northwest corner and a chiseled square in the southwest corner. It is 9.9 feet long, set in excavation made in gravel. Monument was set May 24, 1907.

1906 Station 96728  
 Bound #44 - 2,501 feet east  
 Bound #44A - 819 feet east  
 Bound #46 - 228 feet west



**Looking Easterly**



**Looking Easterly**

**LINE BOUND # 46**

GRANITE MONUMENT

PAVED HIGHWAY

From the bridge-carrying Route 171 over Interstate 84 in the Town of Union, proceed northerly on Interstate 84 to bound 0.5 miles.

Bound is located in the grass median strip between the divided lanes of the highway, 48 feet east of the easterly edge of the bituminous concrete pavement of the westbound lane and 53' from the east bound lane. Bound is 25 feet east of Union Town line sign. West of the highway there is level land for about 100 feet beyond which the land rises abruptly. To the east low level land extends to the swamp along Lead Mine Brook. A more particular location of the monument is shown on Connecticut Department of Transportation Right of Way Map #145-04, Sheet #2, to which reference may be made.

Bound is marked by a granite monument set 3 inches below the ground. It is 9 inches by 10 inches in section with a copper tube in the center, lettered "MASS. 1929 H" on the north face and "CONN 1929 U" on the south face, and is rock faced on the east and west faces. It is 8 feet long, set in concrete. Monument was set July 18, 1929, 14.48 feet east, measured on line, from the 1906 monument, the base of which was left undisturbed under the pavement.

X = 766,543.06  
Y = 436,682.39

1906 Station 96956 (1929 Location)  
Bound #45 -228 feet east  
Bound #47 -1,795 feet west

State Line Bound #46 - CGS 3395 Azimuth  $31^{\circ} 05' 25.9''$  Distance 922.33 Feet



Looking Westerly



Looking Westerly

**ANGLE BOUND #47**

REGULATION GRANITE MONUMENT

PAVED HIGHWAY

Beginning at the Intersection of Holland Road with the southbound off ramp from Interstate 84 in the Town of Union, proceed northwesterly on Holland Road 0.25 miles to bound on the right. Highway crests at 0.2 miles, descends northwesterly and curves sharply to the north and starts a steeper descent opposite a ranch type residence on the west side of the highway, 100 feet south of the bound.

Bound is located 22 feet east of the center of the traveled way and against the west face of the east highway wall. Road and surrounding land is descending northerly past the bound with a small 1 story bungalow 100 feet west of the bound. There are residences 100 feet south of line on both sides of the road.

Bound is marked by a regulation granite monument showing 3.7 feet above the ground. The top is 1' X 1' with a brass plug in the center. It is lettered "1906" on the west face, "H MASS" on the north face and "U CONN" on the south face. Bound has chips in the southeast and southwest top corners and a chiseled square on the northwest top corner. It is 9.6 feet long, set in excavation made in sandy gravel. Monument was set May 24, 1907, in the exact location of the Old 1826 Monument.

1906 Station 98751  
 Bound #46 - 1,795 feet east  
 Bound #48 - 1,912 feet west



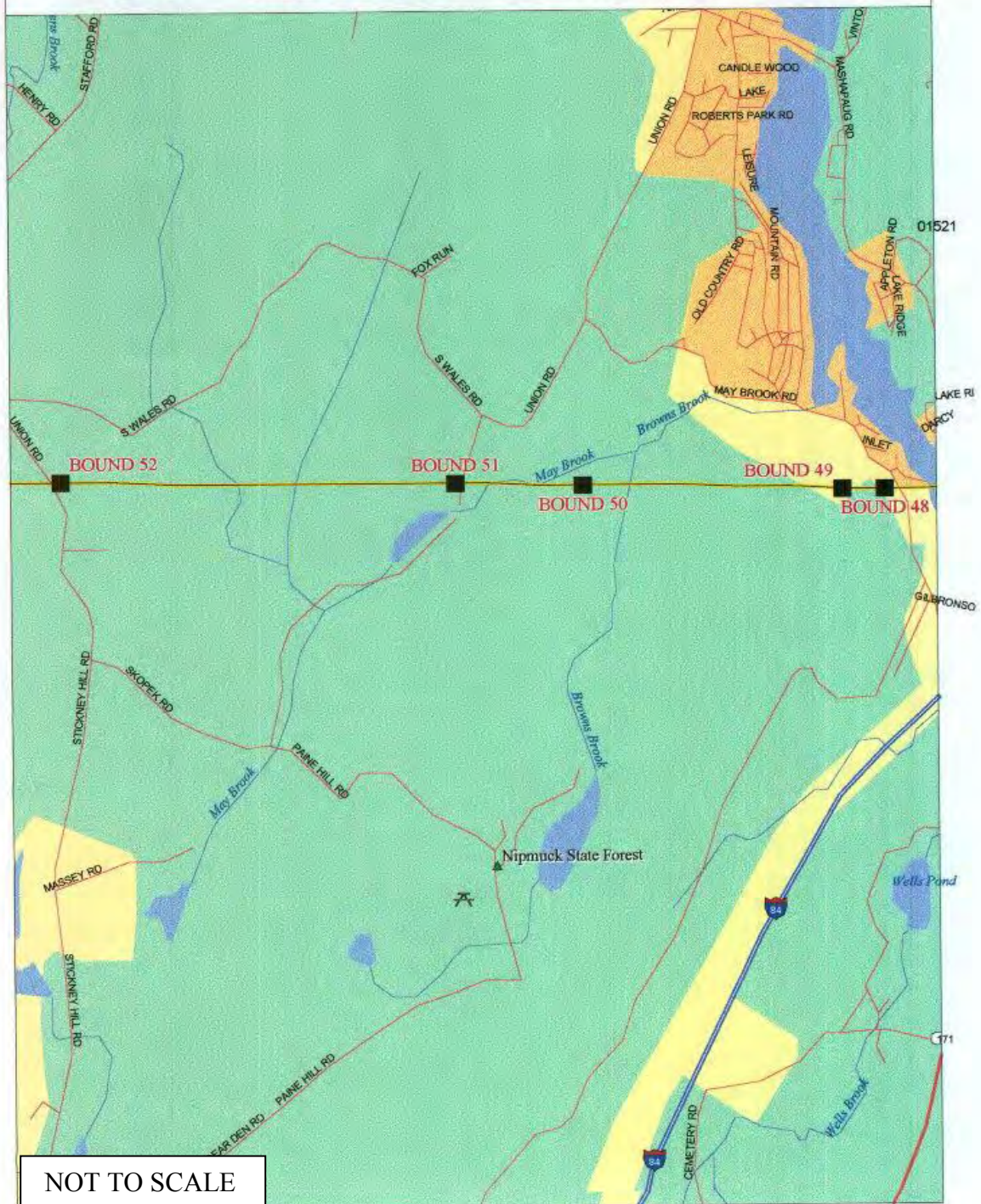


**Looking Easterly**



**Looking Easterly**

# CT - MA Line Section - H



**LINE BOUND #48**

REGULATION GRANITE MONUMENT

PAVED HIGHWAY

From the center of the bridge (Route 171) spanning Interstate 84 in the Town of Union, proceed northwesterly to end of said span and turning left on Gilbronsen Road, proceed southwest, west, and then northerly along Gilbronsen Road, 0.65 miles to bound on left embankment. Road runs along the steep easterly slope of a hill and curves to the west beyond the bound.

Bound is located 29 feet west of the center of the traveled way. Land rises steeply west of the bound and on the east of the highway drops off sharply to Hamilton Reservoir.

Bound is marked by a regulation granite monument showing 3.4 feet above the ground. The top of the monument is 1' x 1' with a 1/2" x 2" drill hole in the center. It is lettered "1906" on the east face, "H" MASS" on the north face and "U CONN" on the south face. It is set in concrete and doweled into the ledge. Monument was set October 3, 1941, 14.90 feet west, measured on line, from its 1906 position.

Bound is referenced by two shallow, 1/4" x 1/2" drill holes on line. Reference Point "A" is 13.75 feet west of the bound. Reference Point "B" is 8.67 feet west of Reference Point "A".

1906 Station 100663 (1941 Location)  
Bound #47 - 1,912 feet east  
Bound #49 - 994 feet west



**Looking Westerly**



**Looking Westerly**



Looking Westerly



Looking Westerly

**LINE BOUND # 49**

SMALL GRANITE MONUMENT

INTERIOR LINE SUMMIT

From the State Line on Gilbronson Road (May Brook Road in Massachusetts) at Bound #48, proceed westerly on line, uphill 994 feet to the bound.

Bound is located at the well defined line summit on the steep northerly slope of a hill at a point 100 feet west of the north end of a granite ledge outcrop. With line cleared, it would see Bound #47 to the east, and Bound #51 to the west.

Bound is marked by a granite monument showing 1.9 feet above the ground. It is 6 inches by 10 inches in section with a 1/2 inch drill hole one inch deep in the top and is lettered "1906" on the east, "M" on the north face and "C" on the south face. Bound is tilted to the north and has suffered apparent abuse to the top edges and letters. The "1906" is very faint. It is 5.6 feet long, set in excavation made in loam and 2.5 feet in ledge. Monument was set May 28, 1907.

1906 Station 101657  
Bound #48 - 994 feet east  
Bound #50 - 3,948 feet west



**Looking Southwesterly**



**Looking Southwesterly**

**LINE BOUND # 50**

REGULATION GRANITE MONUMENT

ABANDONED ROAD

From the Intersection of May Brook and Union Road in the Town of Holland, proceed southerly 0.35 miles on Union Road to indistinct wood road. Union Road, after running relatively level and straight, passes a shanty on the east, descends slightly and curves to the west with the wood road near the west end of the curve. Wood road takes off easterly at utility pole M.E.C.O. & N.E.T.& T. #42.

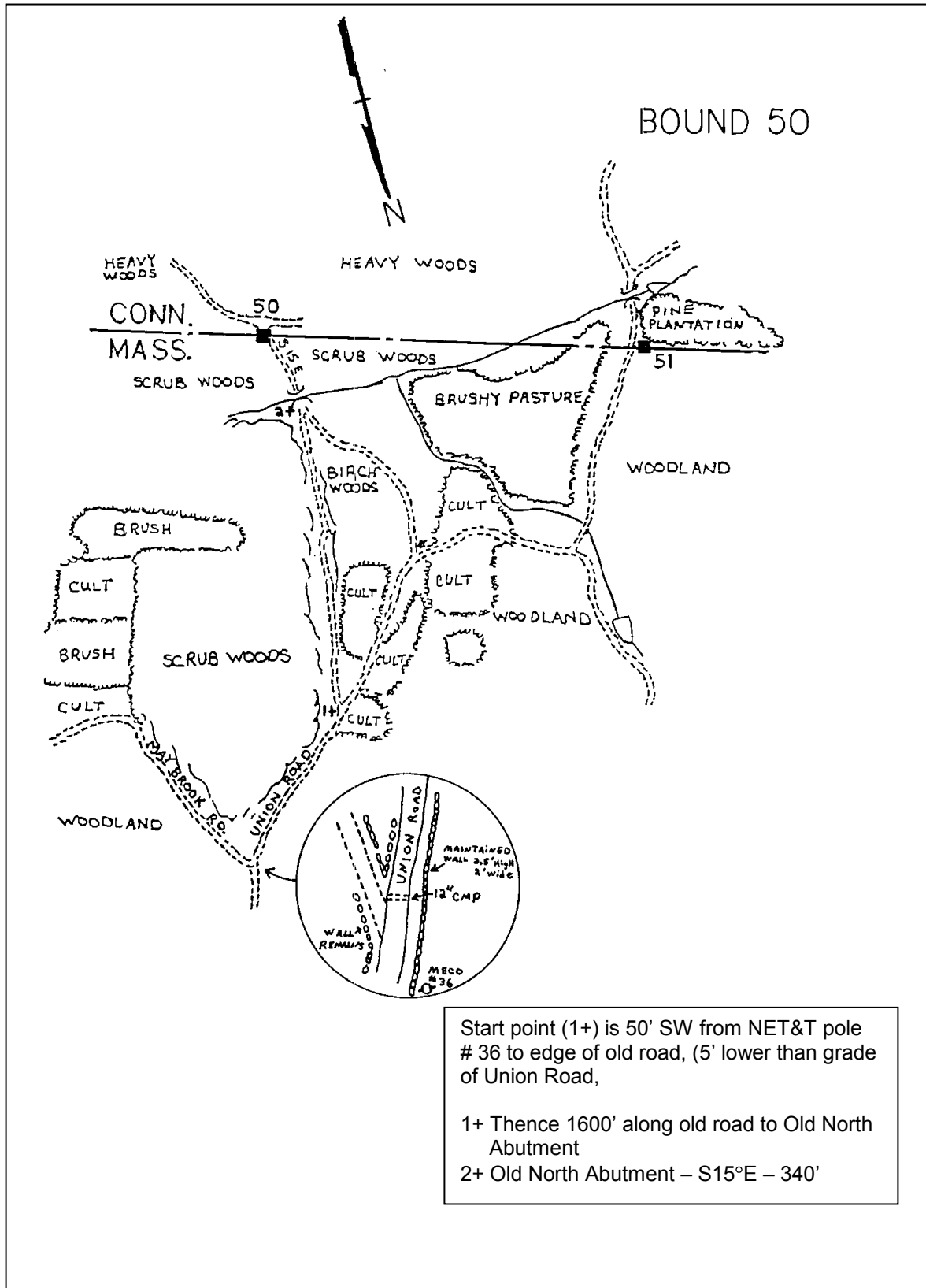
Following sketch, proceed southeasterly following trail to the stone abutments of a former bridge. Cross brook and follow indications of wheel tracks to bound.

Bound is located 12 feet east of the center of an abandoned road at a point 320 feet south of the south abutment of a former road bridge over a brook. Woodland on both sides of the road is ascending southerly as is the road beyond the bound. Road curves to the east, opposite the bound.

Bound is marked by a regulation granite monument showing 4.1 feet above the ground. The top is 1' x 1' with a 3/4" x 1 3/4" drill hole. It is lettered "1906" on the west face, "H MASS" on the north face and "U CONN" on the south face. Bound is tipped to the north and is chipped on all top corners with large chips in the southwest and southeast top corners. It is set in excavation made in sandy loam. Monument was set May 28, 1907.

1906 Station 105605  
Bound #49 - 3,948 feet east  
Bound #50 - 1,949 feet west





1997



**Looking Northerly**



**Looking Northerly**