

## Projectwise Thin Client First Time Set up

1. Launch Internet Explorer
2. Go to Tools>Internet Options
3. Go to Security Tab and add <https://ctdot.projectwiseonline.com> to the trusted sites.

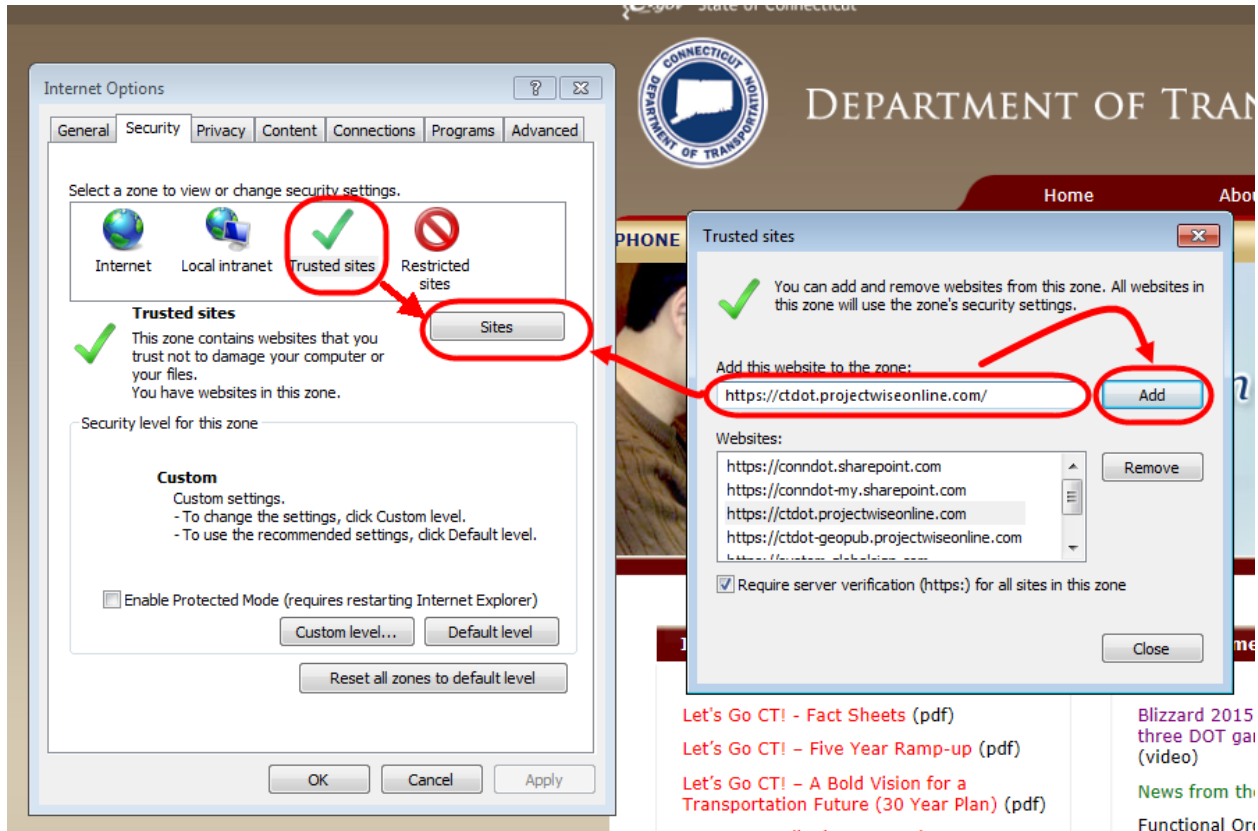


Figure 1 - Trusted Sites

4. Then select custom level Internet Settings and set the active X settings as shown below:

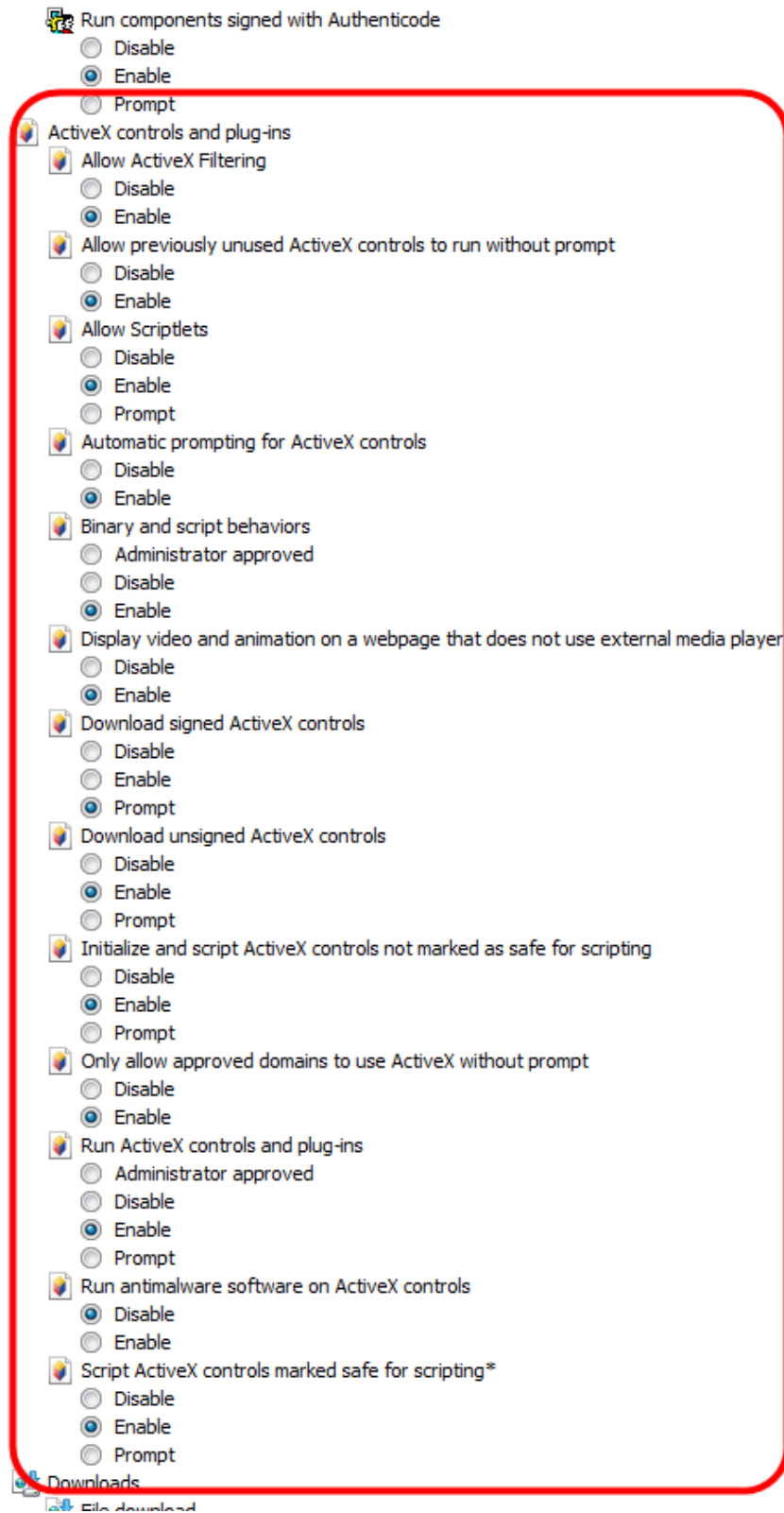


Figure 2 - Active X Settings

- Next add projectwiseonline.com in the compatibility view settings as shown below:

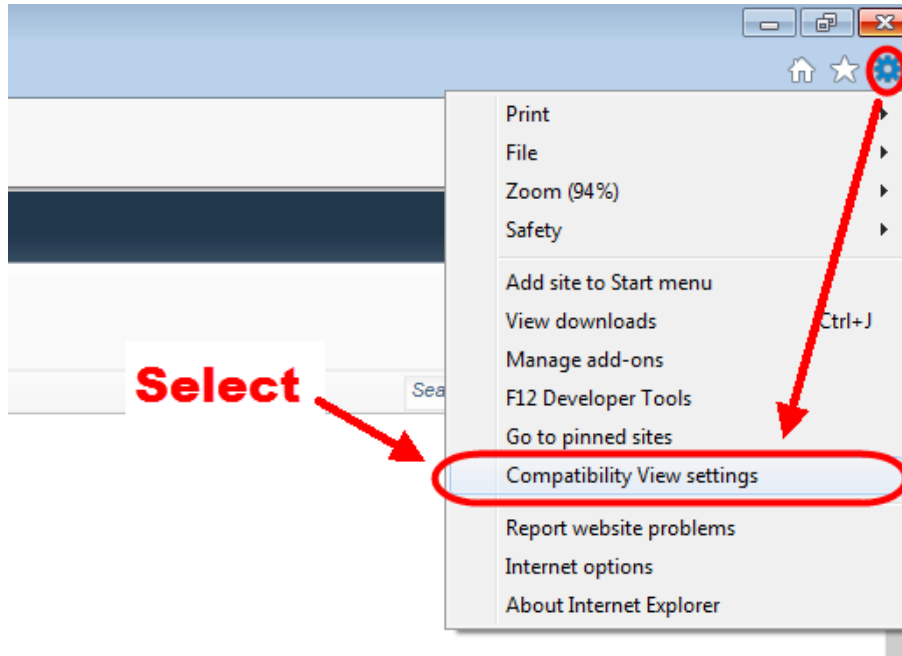


Figure 3 - Compatibility View Settings

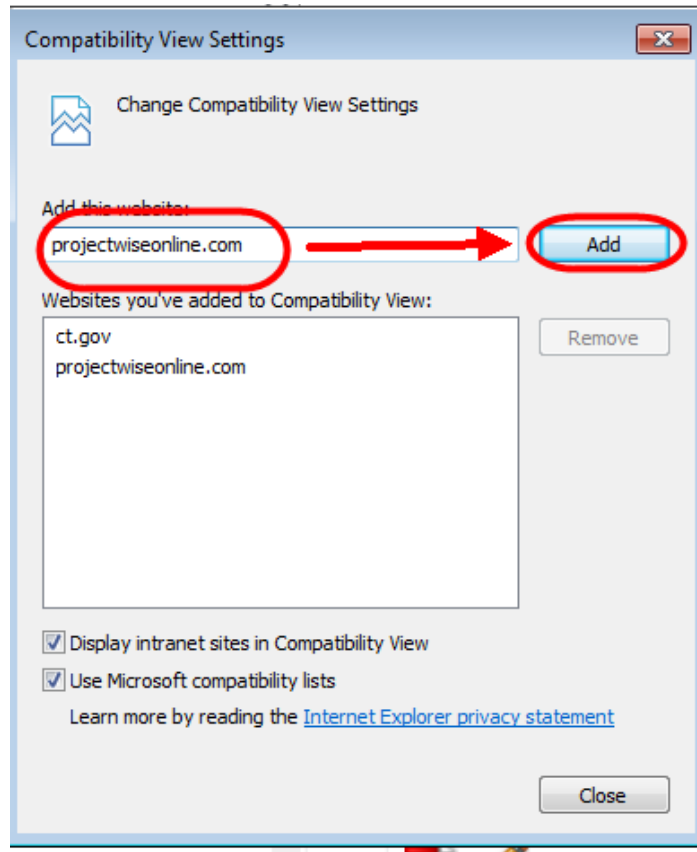


Figure 4 - Compatibility View Settings

Connecticut Department of Transportation – Projectwise Thin Client First Time Set Up

6. Next go to <https://ctdot.projectwiseonline.com> and log in using your Username and Password.
7. If you are prompted install the Active X control. Note you must have Administrative rights to your computer. If you are not prompted go to tools and select Install Projectwise File Transfer browser plugin as shown below:

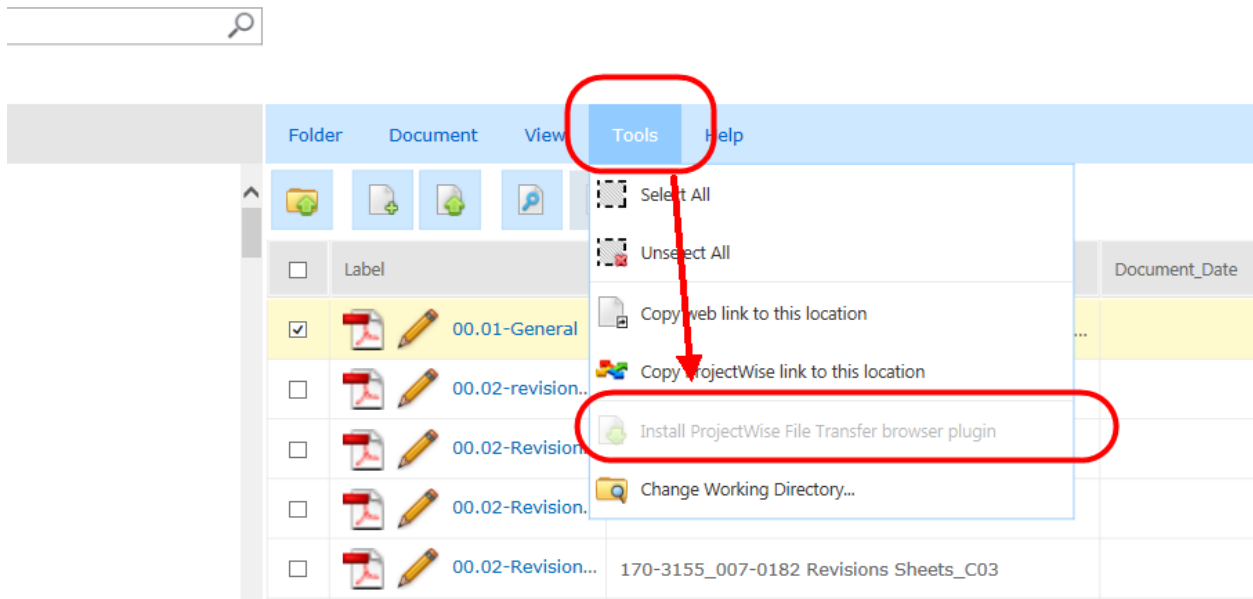


Figure 5 - Active X Control