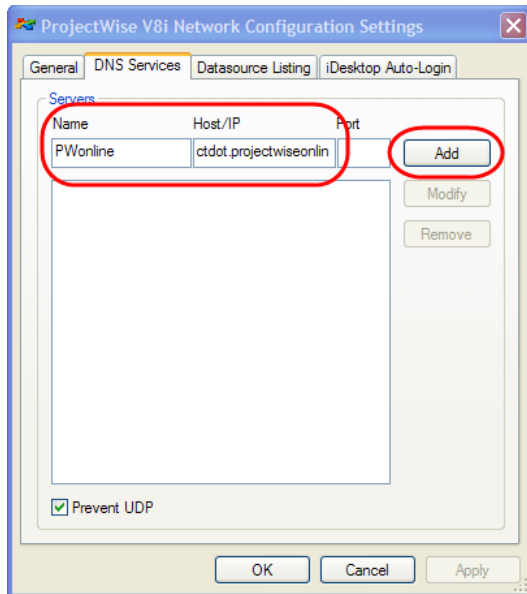


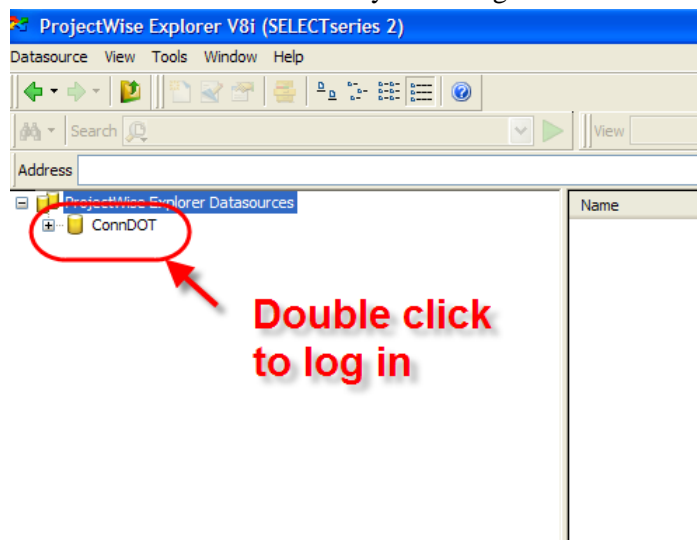
Connecting to the CTDOT Projectwise Datasource using Thick Client

This document gives direction on how to connect to the CTDOT Projectwise datasource using Projectwise Thick Client.

1. Open Projectwise Explorer
2. Go to *Tools > Network Configuration Settings*
3. In the *DNS Services* tab enter **PWonline** in the name and **ctdot.projectwiseonline.com** in the Host/IP and then click *Add*:

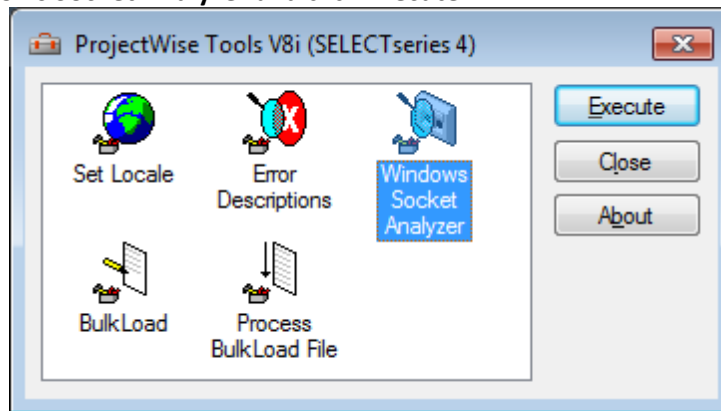


4. In the *Datasource Listing* tab enter **PWonline** in the name and **ctdot.projectwiseonline.com** in the Host/IP and then click *Add* and then click *OK*.
5. Right click on *Projectwise Explorer Datasources* and click *Refresh*. The **ConnDOT** datasource will be available and you can log in.

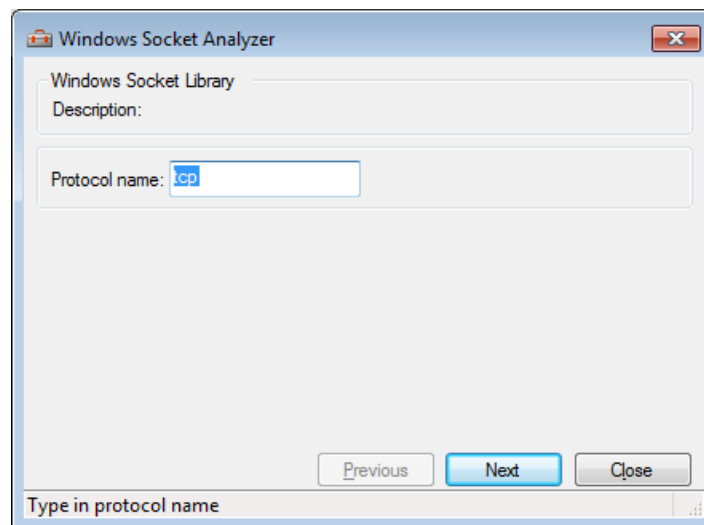


If the Datasources Do Not Display

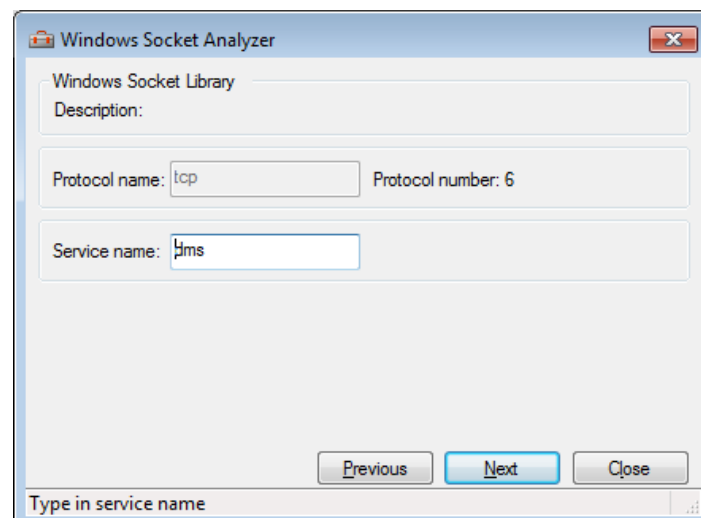
6. First check that ProjectWise is configured correctly. If so, then the connection between it and the datasource's server is blocked. Check that your computer is connected to the Internet and that the server, as configured in ProjectWise, is allowed through the firewall. Port 5800 must also be open. The steps below show how to check if the port is open or not.
7. Go to **Start > Programs > Bentley > ProjectWise V8i > Tools > User Tools**.
8. Select **Windows Socket Analyzer** and click **Execute**.



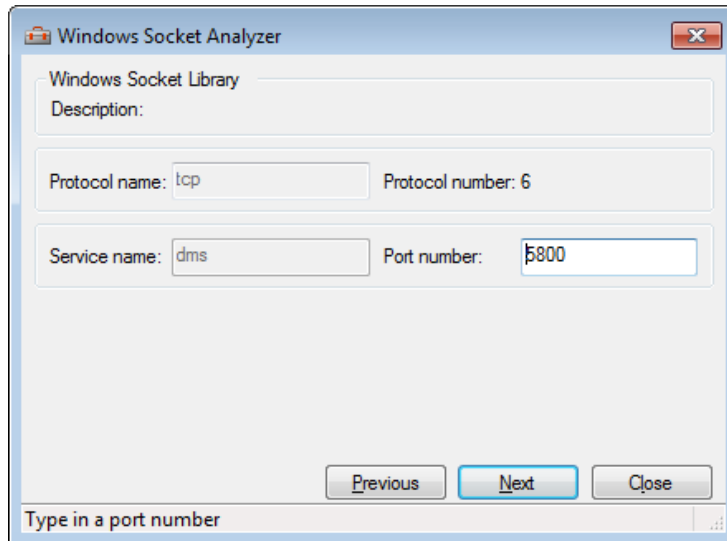
9. Click Next.



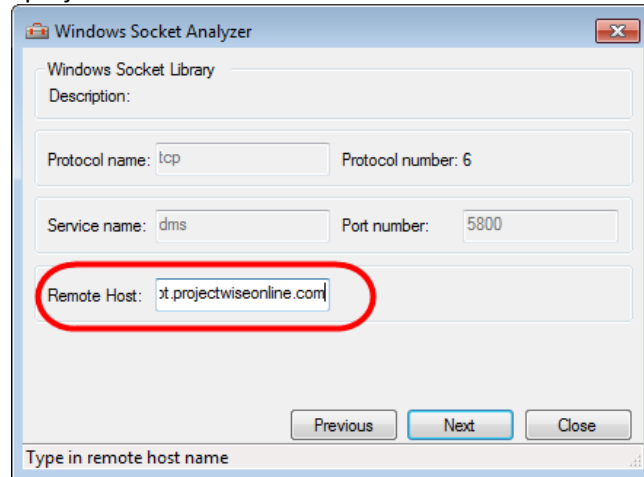
10. Click Next



11. Click Next



12. Then enter ctdot.projectwiseonline.com in the Remote Host



13. Then click next until the connection is tested. If Port 5800 is open, you will get a successful connection.

