

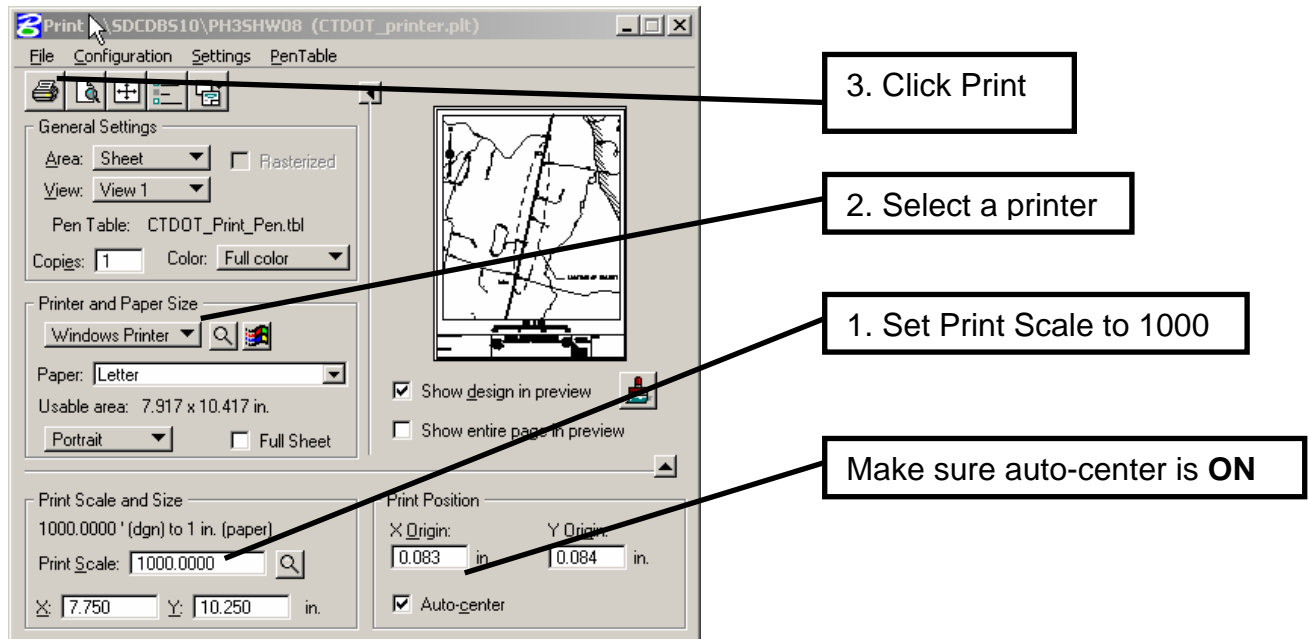
Interim work flow for creating a Location Plan using MicroStation V8

To use this work flow you must already know how to make a cut sheet in MicroStation V8.

- 1. Copy over the TRU map from the T Drive to your project on the X drive**
The TRU maps can be found in the following location:
Conndot_01/sdcdb50/TRU_Maps. The TRU maps are still MicroStation J files.
- 2. Create a 1000 scale sheet model.** Use the following seed file:
CTDOT_v8_workspaces\CTDOT_Standards\Standards\seed\2007\CT_Sheet_Civil.dgn
 - Click <<MDF on the pull down menu and pick CTDOT_Uilities_2007.MDF. Go to Scales>Engr Scale **1in=1000ft**
- 3. Reference in the TRU Map.**
 - Reference the TRU with Orientation set to Coincident – World, scale .04:1, True Scale ON
 - Turn off all unneeded levels in your TRU reference file
- 4. Place a transient Shape.**
 - Click the sheet model Icon and the Models dialog box will open.
 - Click on the Define Sheet Model Icon.
 - Toggle on the display Sheet Layout box, choose the size of your plate and uncheck Origin.
 - Click on the desired location in your view window. A gray transient plotting shape will appear.
- 5. Place the Permit Border Cell.**
 - Find Permit Bdrs on the Highway Bar Menu,
 - Pick Location and choose the desired size.
 - Tentative to the lower left hand corner of the transient shape and accept.
 - Clip the TRU files to the Border Cell.

6. Print your plate

- Change your <<MDF pull down menu to CTDOT_Utilities.MDF
- Choose Plotting>Print and pick BW (black & white) or color



If this window does not appear and you are prompted to select a file, open the following file:

CTDOT_V8_Workspaces on 'Sh3dgs18 (W:\)

CTDOT_Standards\Standards\plotdrv\CTDOT_printer.plt

(By doing this once your computer will default to the proper print window)