

Plan Profile Generator

Plan Sheet Creation:

1. Click on the Preferences at the bottom of the box and choose Plan Only 2007.
2. Select the Plan Controls Tab and Click Model Files. Select the files that will be attached as reference files (The main design file and the ground file)

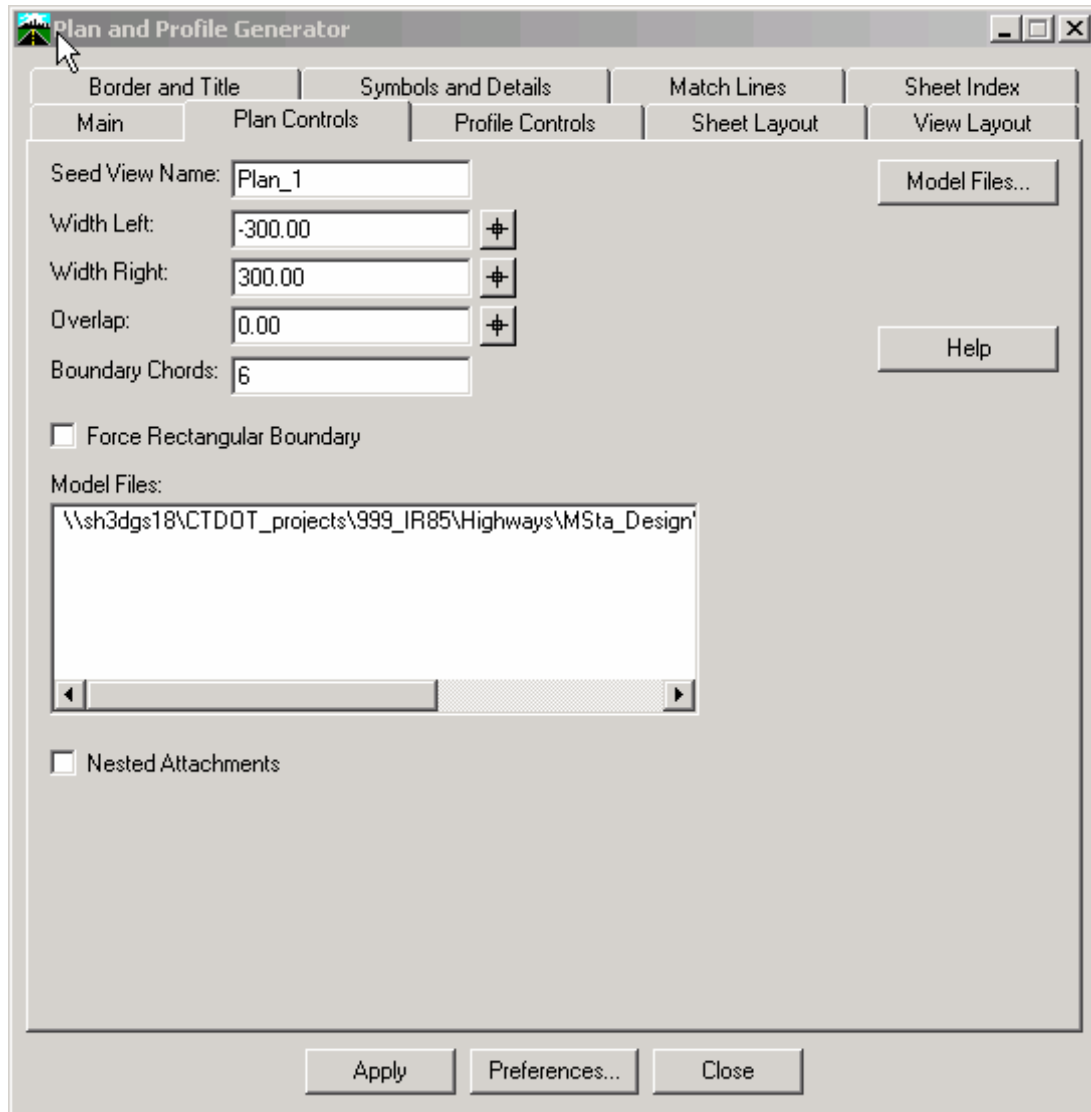


Figure 0-1 InRoads Plan and Profile Generator Plan Controls Tab

3. Select the Sheet Layout Tab
 - Set the Host File path to ...Highways\ and add the following in the File name space HW_MSH_PROJ#_PLN-
 - Set the Seed Host File to ...CTDOT_Standards\Standards\seed\2007\CT_sheet_civil.dgn

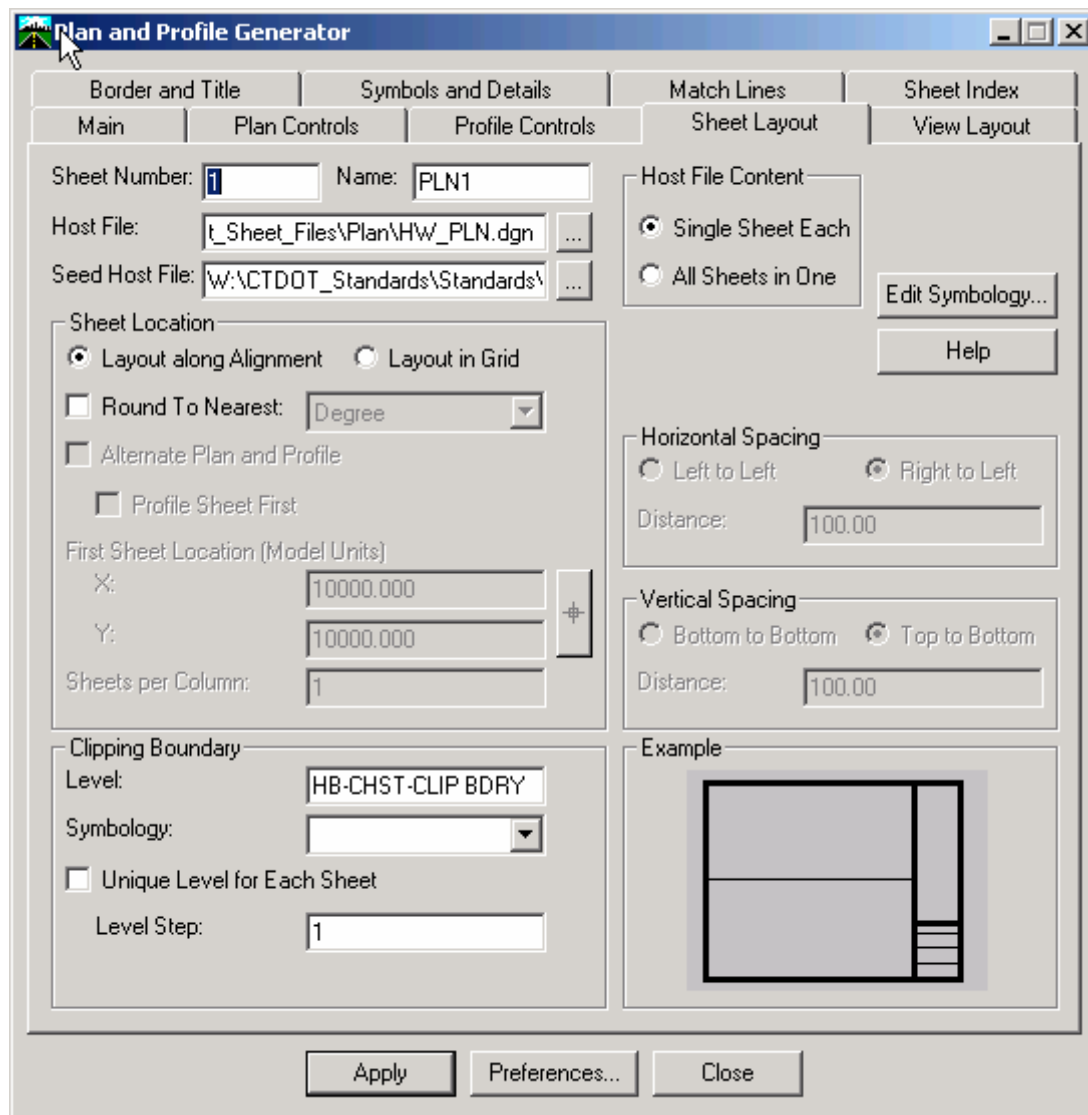


Figure 0-2 InRoads Plan and Profile Generator Sheet Layout Tab

4. Select the Border and Title Tab. In the Border section, toggle on Cell and in the name box select Contract_BDR_Plan

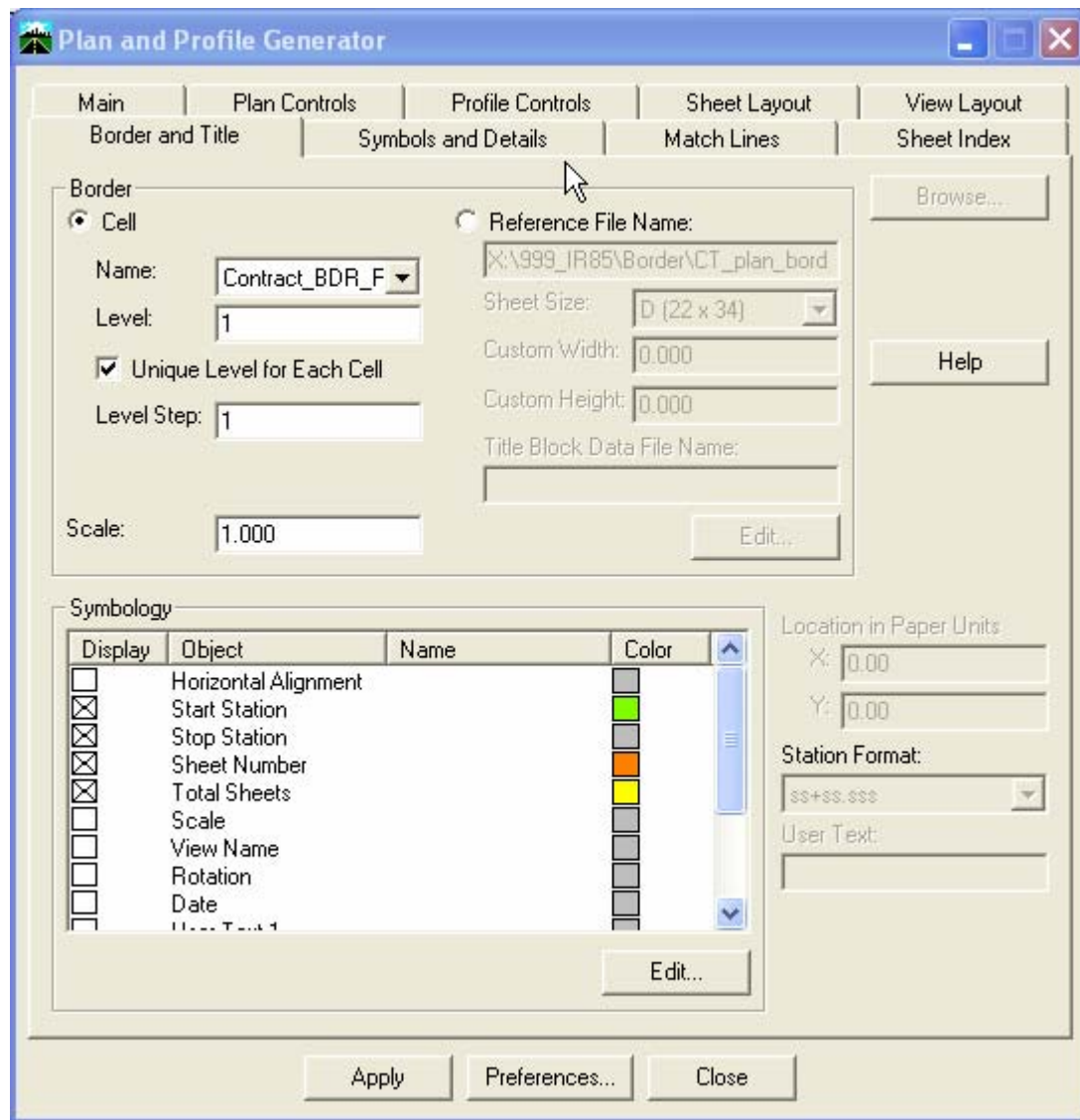


Figure 0-3 InRoads Plan and Profile Generator Borders and Title Tab

Profile Sheet Creation:

1. Click on the Preferences at the bottom of the box and choose Profile Only 2007.
2. Click the Profile Controls Tab. The Profile Preference should be set to 2007 CTDOT Border Format. In the Surface section, toggle on the Existing surface and your top design surface.

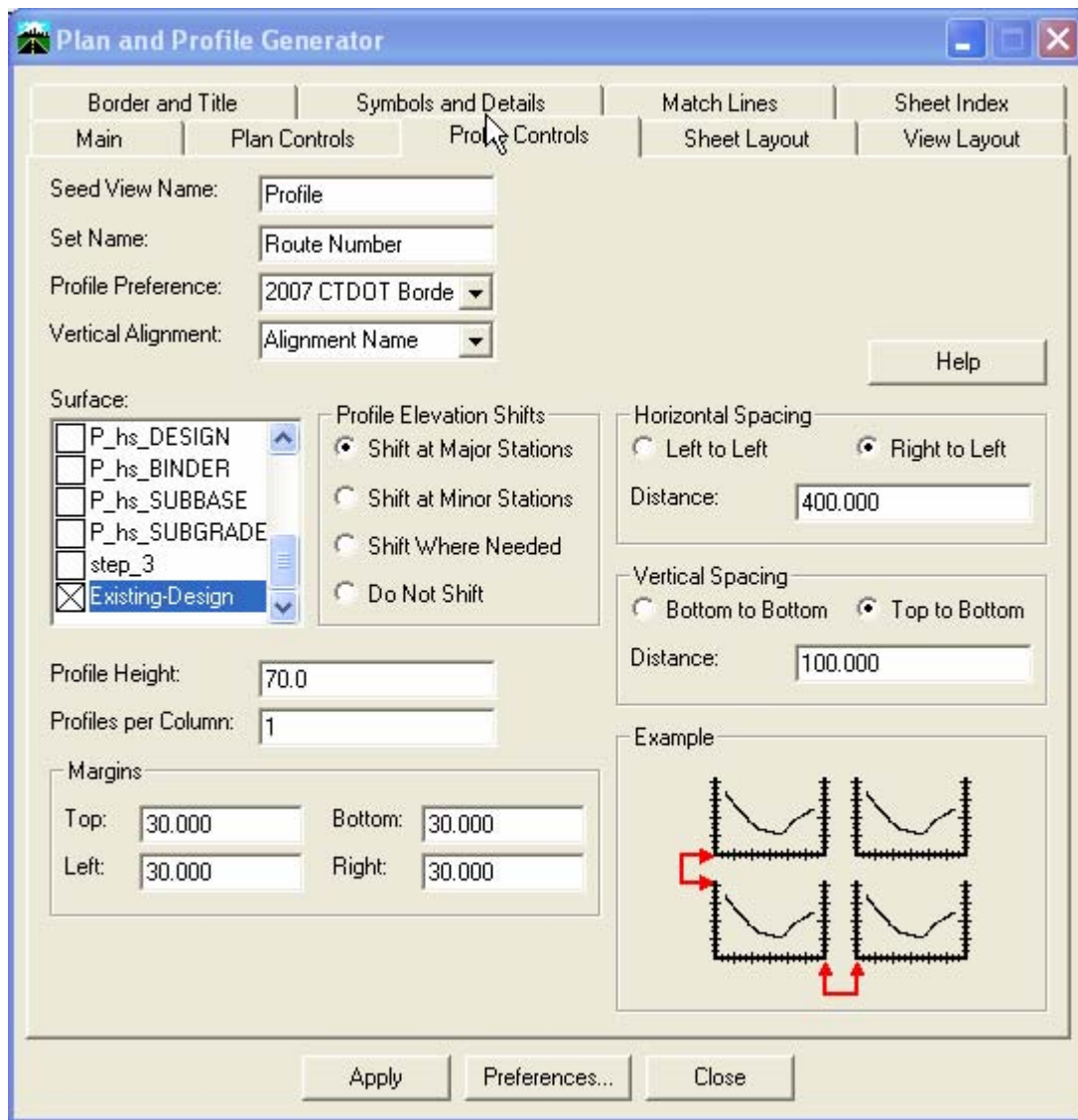


Figure 0-4 InRoads Plan and Profile Generator Profile Controls Tab

3. Select the Sheet Layout Tab.
 - Set the Host File name to ...Highways and add the following name at the end of the path HW_MSH_Proj#_PRO-
 - Set the Seed Host File to ... CTDOT_Standards\Standards\seed\2007\CT_sheet_civil.dgn

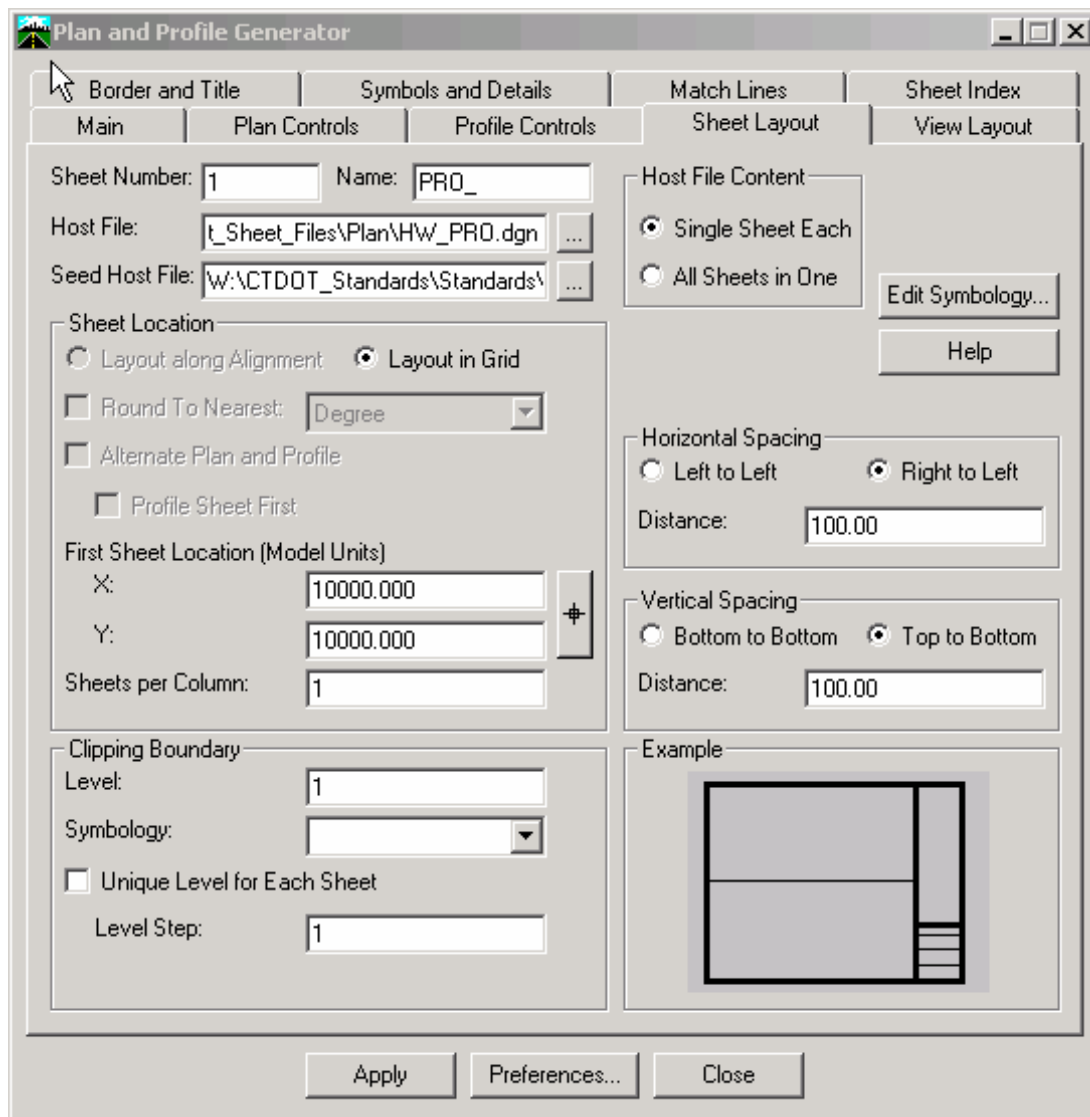


Figure 0-5 InRoads Plan and Profile Generator Sheet Layout Tab

4. Select the Border and Title Tab. In the Border section, toggle on Cell and in the name box select Contract_BDR_Plan

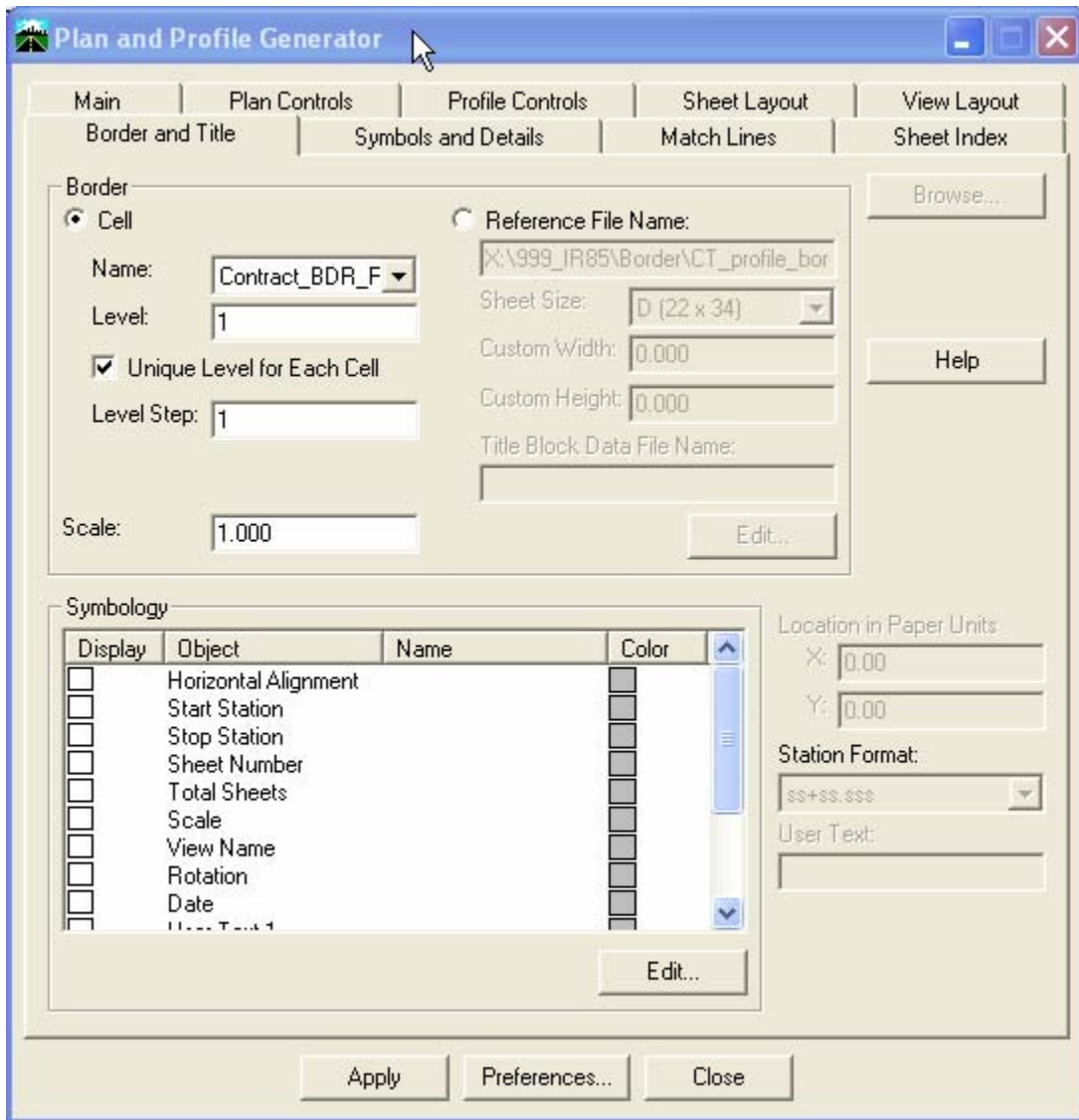


Figure 0-6 InRoads Plan and Profile Generator Borders and Title Tab