

INROADS HORIZONTAL ALIGNMENT ANNOTATION

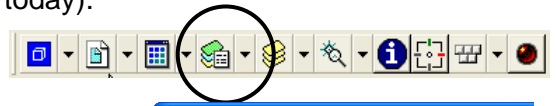
WHAT DOES THIS DO:

This workflow will explain how to annotate a horizontal alignment using the new CTDOT MS V8 standards.

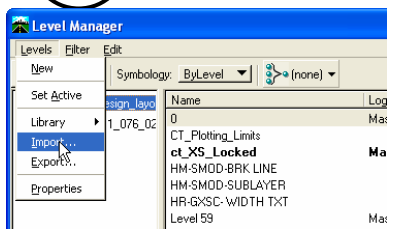
Update your design file with the Highway Level Library

If you have an old design file (a file you did not create today).

1. Open the level manager



2. In the level manager Click on Level > Import...



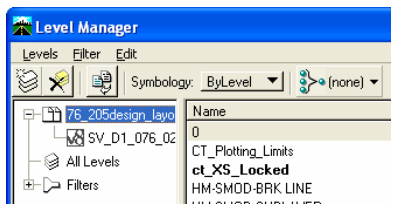
3. Browse to:

W:\Highways_Workspace\Standards\dgnlib

4. Change File of type to .dgnlib

5. Click in Highways_levels_names.dgnlib

6. On the level manager click on the level from library button



Import the Horizontal annotation tool bar

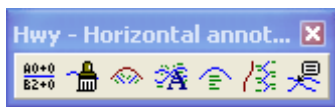
1. Click on Tools > Customize > Import

Browse to: W:\Highways_Workspace\Standards\InRoads\Hwy – Horizontal annotation.tbr

2. Click the Import button

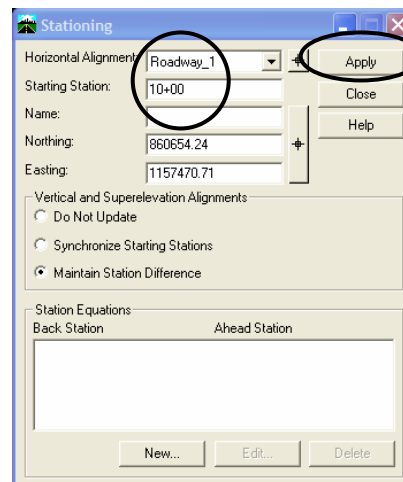
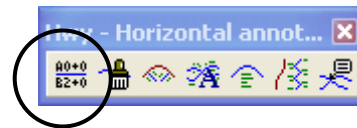
3. On the toolbars tab check on the Hwy – Horizontal annotation toolbar

4. Click close and the tool bar will open. You can dock it where ever you would like. The seven commands on this toolbar will need to be completed to correctly annotate the alignment.



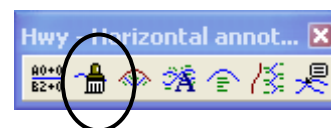
Set your starting station

1. Click on the Stationing command
2. Select your horizontal alignment and enter the station for the beginning of the alignment.
3. Click "Apply"

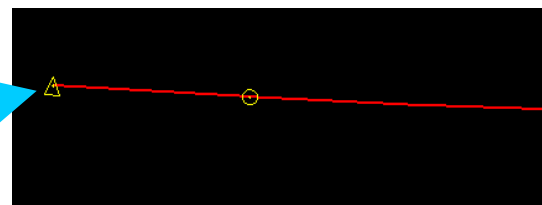


Display Alignment symbols

1. Click on the View Active Horizontal Command to display the horizontal centerline, the PC, the PT and the on alignment PI symbols.

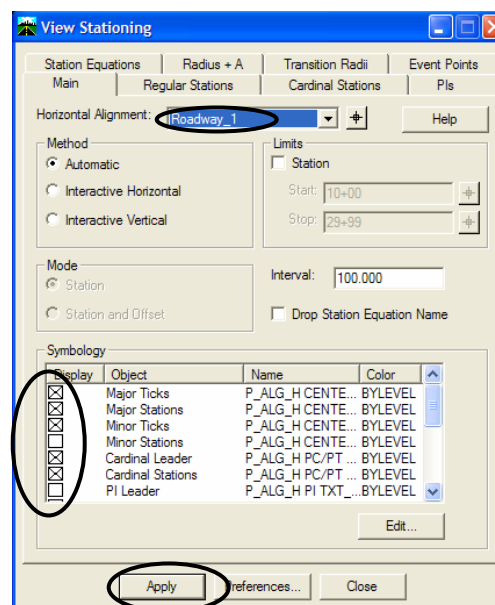
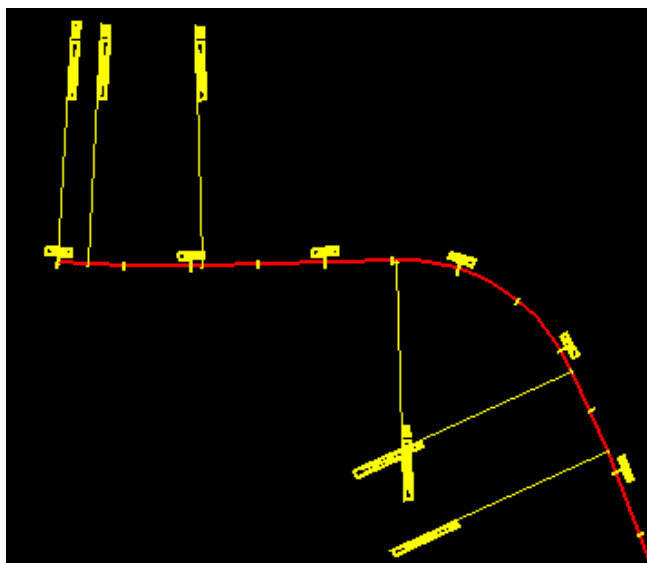


On alignment
PI symbol



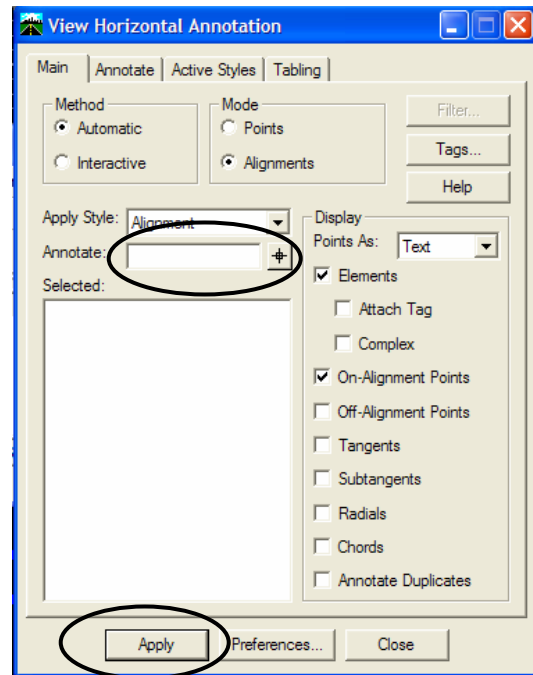
Display Stationing

1. Click on the View Station Command to display the stations, major ticks, minor ticks, PC & PT cardinal leaders.
2. When the View Stationing dialog opens enter the horizontal alignment name, the five Symbology boxes should already be checked off. Click "Apply"



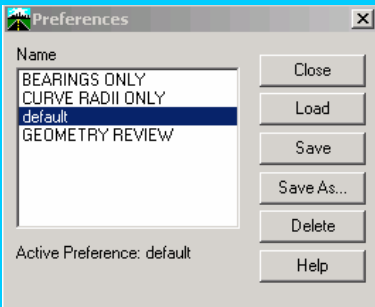
Display bearings

1. Click on the View Horizontal Annotation to add curve data text, off alignment PI symbols and short tangent lines for the off alignment PI symbols.
2. Click on the pick button and data point on the alignment that you want to annotate. The alignment name will then be entered into the Annotate field.
3. Click "Apply" to add the bearings, by default the horizontal centerline, and PC, PT & PI symbols will be redisplayed.

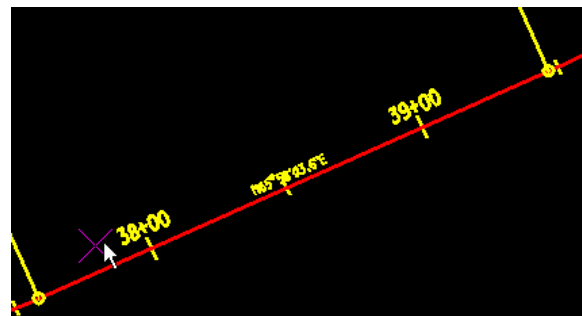


OTHER OPTIONS

Additional preferences have been set up to display alignment information in various combinations.

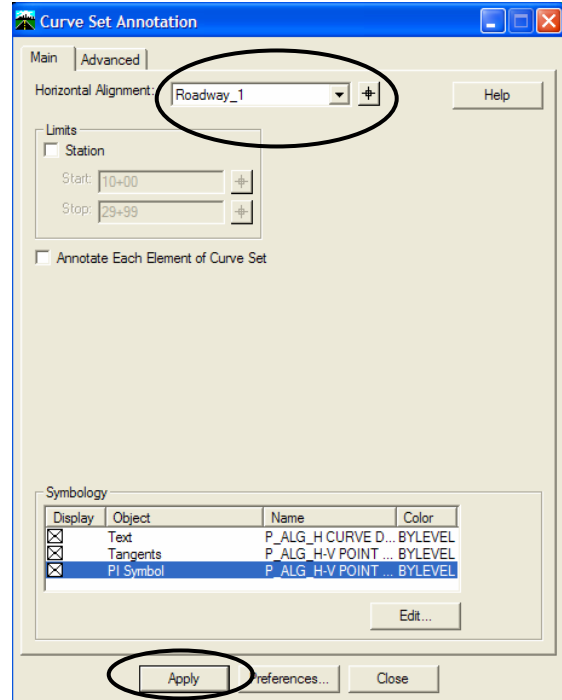
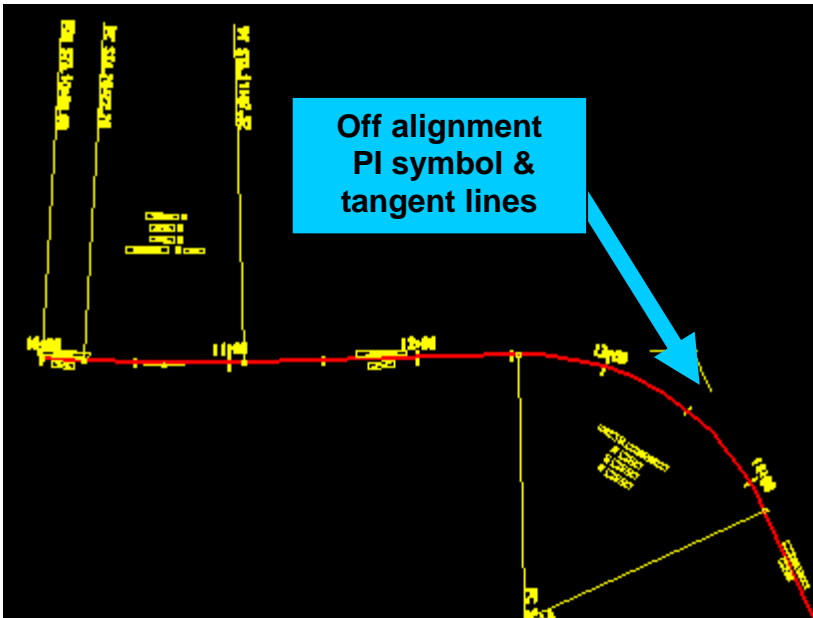


Active Preference: default

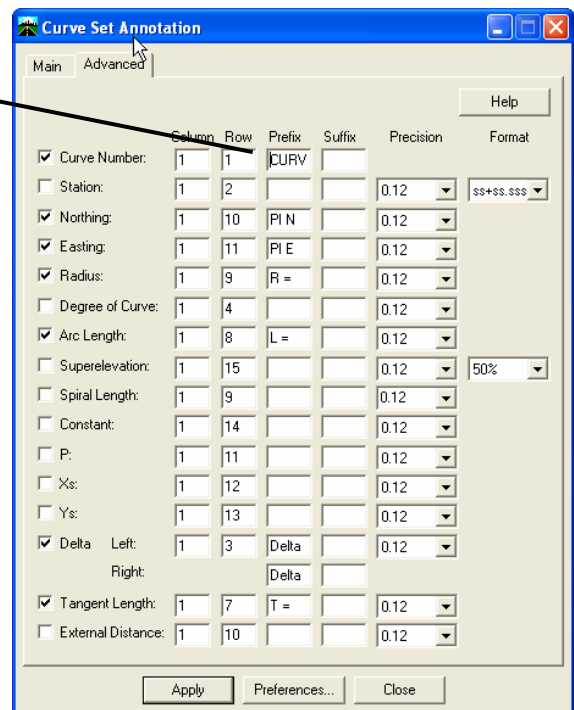


Display curve data

1. Click on the Curve Set Annotation to add curve data text, off alignment PI symbols and short tangent lines for the off alignment PI symbols.
2. Click on the pick button and data point on the alignment that you want to annotate. The alignment name will then be entered into the Annotate field.



3. Data point before curve and type in the name of your Alignment.

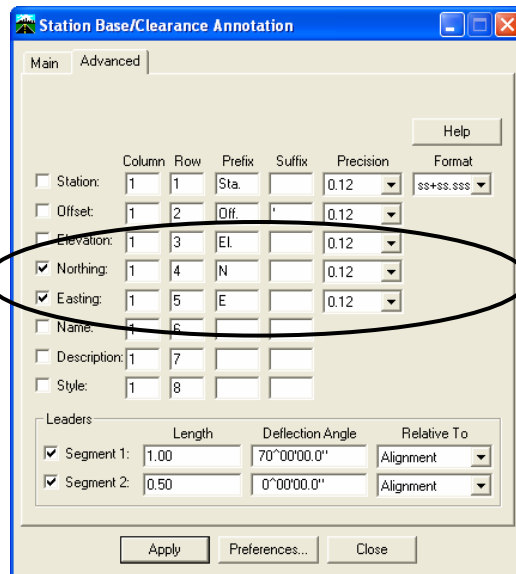
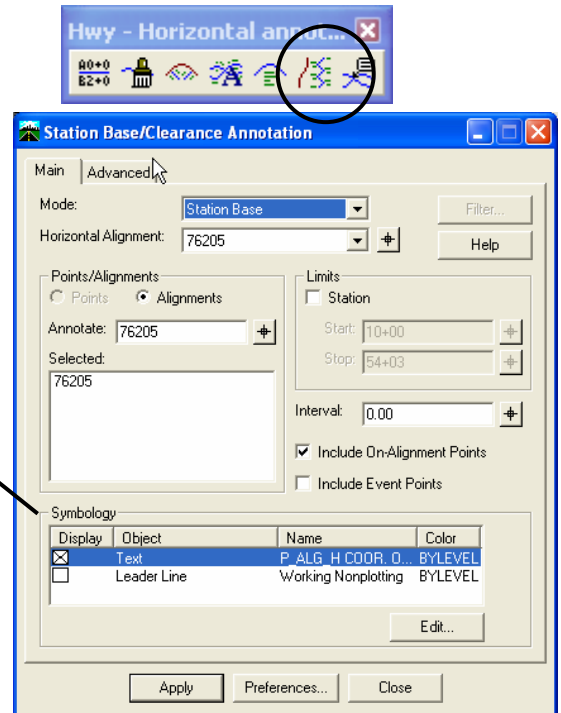
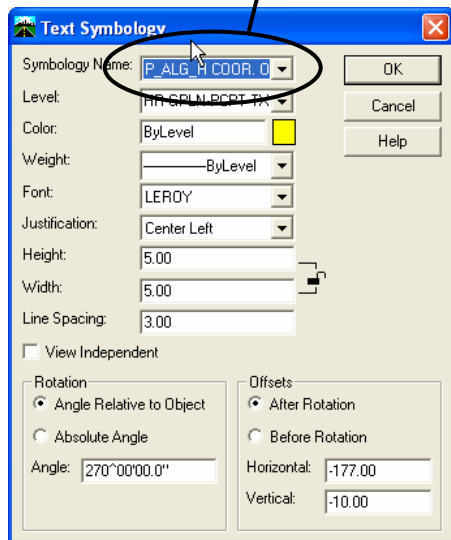


Display Northing and Easting Coordinates

1. Click on the Station Base/Clearance Annotation to add coordinates to the PC & PT leader lines.
2. Click on the pick button and data point on the alignment that you want to annotate. The alignment name will then be entered into the Annotate field.
3. Check the following symbology and click the "APPLY" button

Leader line should be toggled off

Symbology name should be set to:
P_ALG_H COOR. ON LEADERS



Display Intersection coordinates

1. Make sure you have set up your Project Defaults > Drafting Notes to point to the "CTDOT_notes.dft" file in your design project.
 2. On the Place Plan Note dialog box, go to File > Open and open the "CTDOT_notes.dft" file.
 3. Click on the Place Alignment Intersection Note to annotate the intersection point of two alignments.
 4. Click on the "Plan" folder to expand the list of plan notes.
 5. Toggle on the Intersect option
 6. Select the note "Intersection Alignment Annotation"
 7. Toggle OFF the Rotate option
 8. Click "APPLY"
- Identify the first horizontal alignment by data pointing on it
 - Click again to accept it
 - Identify the second horizontal alignment by data pointing on it
 - Click again to accept it
 - Data point in the "quadrant" or corner of the intersection where you'd like the leader & text for the intersection alignment information to be placed
 - The text will now be interactive with your cursor, click again to place the graphics at the desired location.

