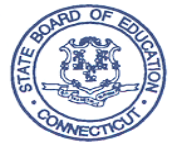




STATE OF CONNECTICUT  
DEPARTMENT OF EDUCATION



**TO:** 2013 Summer Food Service Program (SFSP) Sponsors

**FROM:** John Frassinelli, Chief  
Bureau of Health/Nutrition, Family Services and Adult Education

**DATE:** July 26, 2013

**SUBJECT: Operational Memorandum #14-13 – SFSP**  
Eligibility Based on Census Data: 2013 Data Release

The purpose of this memorandum is to provide guidance regarding the use of the most recent census data release for area eligibility determinations in the Child and Adult Care Food Program (CACFP) and the Summer Food Service Program (SFSP). These new data are effective with release of this memo and available in the 2013 folder on Partnerweb <https://www.partnerweb.usda.gov/communities/cndpolicy2/CND%20Resources/Forms/1.aspx?RootFolder=%2fcommunities%2fcndpolicy2%2fCND%20Resources%2fCensus%20Area%20Eligibility&FolderCTID=&View=%7b90D2EEBE-3FBB-4235-9583-F432F7D8FE6A%7d>. The 2012 data will be available for monitoring and reviews and can be found in the 2012 folder.

Policy Memo CACFP 07-2012, SFSP 09-2012, Eligibility Based on Census Data: 2012 Data Release ([http://www.fns.usda.gov/cnd/Care/Regs-Policy/policymemo/2012/CACFP07\\_SFSP09-2012.pdf](http://www.fns.usda.gov/cnd/Care/Regs-Policy/policymemo/2012/CACFP07_SFSP09-2012.pdf)) describes in detail how to determine area eligibility using census data for CACFP day care homes and SFSP sites. Briefly, CACFP day care homes and SFSP sites that establish eligibility using census data are required to use the most recent census data available (7 CFR 226.6(f); 7 CFR 225.6(c)). Area eligibility determinations based on census data are effective for five years (see CACFP 02-2012, SFSP 02-2012, *Eligibility Based on Census Data*, October 31, 2011, [http://www.fns.usda.gov/cnd/Care/Regs-Policy/policymemo/2012/CACFP02\\_SFSP02-2012.pdf](http://www.fns.usda.gov/cnd/Care/Regs-Policy/policymemo/2012/CACFP02_SFSP02-2012.pdf)).

In order for a CACFP day care home or a SFSP site to be eligible, 50 percent or more of the children in a Census Block Group (CBG) must be eligible for free or reduced price school meals. CACFP day care homes and SFSP sites are considered area eligible if they are located in a CBG that qualifies under either CACFP or SFSP.

Sponsors must annually inform tier II day care home providers that the provider may ask for a reclassification to be considered when new census data become available each year and that reclassification may be made at any time for tier II homes. If a day care home is currently classified as tier II, but the CBG data demonstrates that the home is now tier I, then the sponsor may immediately change the status of that home to tier I and pay the higher rate of reimbursement for the current and subsequent months. A reclassification to Tier I status is good for five years, at which time eligibility for this classification will need to be reconfirmed. Retroactive reimbursement at the higher tier I rates will not be provided for any previous month.

Operational Memorandum #14-13 – SFSP  
July 26, 2013  
Page 2

### **Using the New Data**

Individual .XLS (Excel) files containing eligibility information have been created for every CBG for each State. Within each data file is an ‘Eligible’ column that can be used to determine eligibility for both Programs. Please note the important details about opening the file correctly in different formats.

The attached instructions for determining eligibility using the 2013 data are provided in the same folder as the data. The instructions offer two different tools to determine eligibility: the Census Bureau tools and a map developed by the Food Research and Action Center (FRAC). The FRAC map is constructed from the same data files that are available on Partnerweb and may be used to determine eligibility.

We would appreciate feedback regarding how the data are delivered, including formatting, and any challenges you may have encountered when using the data. As new data are released each year, State agencies and sponsors will be required to use the newest data for new classifications.

Questions pertaining to this memorandum may be directed to Fionnuala Brown at 860-807-2129 or [fionnuala.brown@ct.gov](mailto:fionnuala.brown@ct.gov).

JF:fb

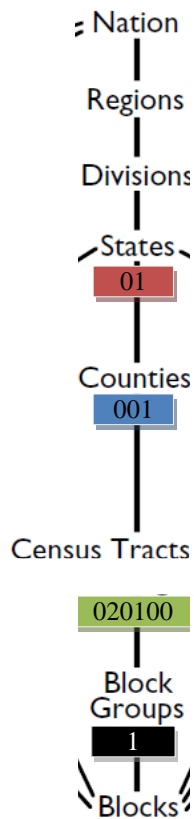
Attachment

Important: This is a numbered Operational Memorandum that contains important program information. Please read carefully and retain in a binder for your future reference. Operational Memoranda are also posted on the Child Nutrition Web site at the following link:  
<http://www.sde.ct.gov/sde/cwp/view.asp?a=2626&q=333792>

## Instructions for Eligibility Based on Census Data

### Step 1: Become familiar with the census data format

#### About the 2010 Census Block Group



This file contains the 2010 Census Block Groups (CBG). Every 10 years the Census updates the area-based measures such as census tracts, blocks and block groups. This means that the income *and* CBG data released in 2003 should no longer be used.

The ideal size of a CBG is around 1500 homes but vary by region and area characteristics. Contrary to the name, CBGs are not usually shaped like rectangles; rather they can take any shape. The graphic on the left shows the relationship of CBGs to other geographical areas and the components of the GEOID.

Every CBG in the country is numerated, meaning it has a unique number assigned to it. This number is called the GEOID.

#### What information is in the GEOID?

The GEOID contains 12 digits. Each position in the GEOID signifies a different level of geographical area. Every digit is important, even the first zero. This is important to remember when importing these data, because some programs drop the first zero. There is more information below about how to import the data correctly.

Here is an example of a GEOID from Autauga County, Alabama:

010010201001

- **STATE:** The first 2 characters are the State code
- **COUNTY:** The next 3 characters are the county code
- **TRACT:** The next 6 characters are the census tract code
- **BLOCK GROUP:** The last character is the census block group code

The latest census data files can be found in folders here:

<https://www.partnerweb.usda.gov/communities/cndpolicy2/CND%20Resources/Forms/1.aspx?RootFolder=%2fcommunities%2fcndpolicy2%2fCND%20Resources%2fCensus%20Area%20Eligibility&FolderCTID=&View=%7b90D2EEBE-3FBB-4235-9583-F432F7D8FE6A%7d>

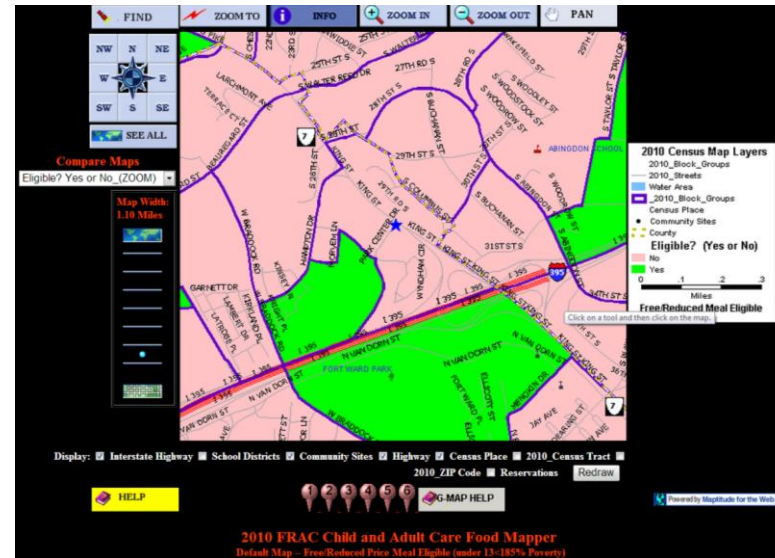
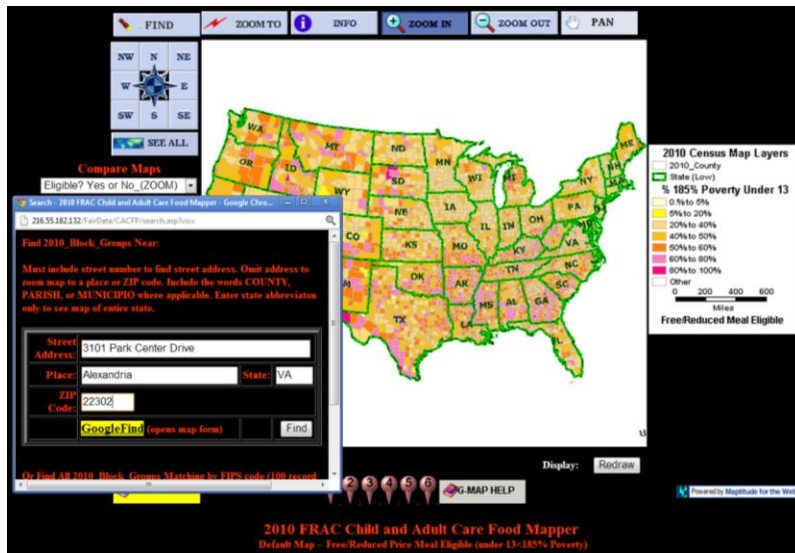
## Step 2: Determine eligibility

Below are instructions for two options to determine eligibility. State agencies, sponsoring organizations and individuals can use either tool.

1. The Food Research and Action Center (FRAC) Map. This map includes an address search that will return eligibility information as well as other demographics. This map also includes zoom capabilities and map comparison for identifying areas of need. There is one map for CACFP and one for SFSP but remember both maps will return the correct information as eligibility in one program applies to both.
2. The Census Bureau tools. These tools provide another method of identifying eligibility.

### Step 2, Option 1: How to determine eligibility using the FRAC map

1. Go to either FRAC map:
  - a. CACFP <http://216.55.182.132/FairData/CACFP/map.asp?command=scope&map=0>
  - b. SFSP <http://216.55.182.132/FairData/SummerFood/map.asp?command=scope&map=0>
2. To find by address, click on “Find” and enter the address.
3. In resulting map, the highlighted color indicates eligibility as indicated in the map layer key.
4. If an address falls on a border between an eligible and ineligible CBG, click on the blue star and then INFO and scroll in the “2010 Block Group Information” window to “Eligible? (Yes or No).”



**Step 2, Option 2: How to determine eligibility using Excel and Census.gov**

Each State file contains the GEOID, the County Name, State Name, if the CBG is Eligible for SFSP and CACFP, and percentages of CACFP and SFSP children eligible for free and reduced priced school meals in that CBG. Finally, we have separated each GEOID into its geographical components in the last four columns: State, County, Tract, and Block Group.

GEOID	County Name	State Name	Eligible? (Yes or No)	SFSP: Percent 0-18 year olds eligible for free and reduced price meals (%)	CACFP: Percent 0-12 year olds eligible for free and reduced price meals (%)	State Code	County Code	Tract Code	Block Group Code
010010201001	Autauga County	Alabama	No	14.3	17.6	01	001	020100	1
010010201002	Autauga County	Alabama	No	22.1	26.2	01	001	020100	2
010010202001	Autauga County	Alabama	No	31.1	23.3	01	001	020200	1
010010202002	Autauga County	Alabama	No	42.4	48	01	001	020200	2

**Things to be aware of when opening the State file(s):**

If you open the file in a program other than Excel, make sure when importing that all fields are formatted as ‘Text’ at the import step. If the fields are formatted as ‘numeric’ or ‘general,’ then the first zero(s) of the 12 digit GEOID may be deleted automatically. In the last data release, it was reported that some non-Excel programs truncated zeros at the end of the number. Please ensure you have the expected number of digits in each column.

Also, if you have Excel 2003 or earlier versions, most files will open without incident, but large files may be truncated. If you think this may have occurred, please verify the file with a text editor. If the last CBG in the Excel file and text editor are the same, the Excel file is complete. If the last CBGs are not the same, the Excel file may truncated.

If you open the file in a word processing software but are having trouble aligning the columns, change the font to ‘Courier New’ or similar fixed width font.



## Look up a GEOID using a map

1. Go to <http://tigerweb.geo.census.gov/TIGERweb2010/> \*this website requires [Microsoft Silverlight \(5.0\)](#)
2. When the window opens, a 'Map Content' box will be showing. Check the 'Transportation' box and then close the window by clicking on the 'X' in the upper right corner.
3. Next, using the Zoom Tool, zoom in to approximately where you'd like to look up, as near as possible to the address. If you do not know where the address is, you can use an online mapping website, like Google Maps. You can zoom by using the Zoom tool on the left side of the map or by using your mouse's scroll wheel.
4. Once you have zoomed in, select the Query button.
5. In the top of the Query window, click on the blue/yellow box with binoculars, this is a 'Spatial Query.'
6. Next, in the 'Select Map' pull down menu, chose 'Census Tracts and Blocks.'
7. In the field called 'Select Layer' highlight 'Census Block Groups.'
8. Click on the gray box with the blue circle, and click the map, as close as possible to the address.
9. A GEOID will appear in the second query box and you should search for this number in the Excel when determining eligibility. If the address seems near to the highlighted CBG boundary, you can check for accuracy in the next step.

The screenshot shows the TIGERweb (beta) interface. The map displays a highlighted area in Virginia. A 'Map Content' window is open on the left, and a 'Query' window is open on the right. Arrows point to various steps:

- Step 2: Map Content window
- Step 3: Zoom tool
- Step 4: Query button
- Step 5: Spatial Query button
- Step 6: Select Map dropdown menu
- Step 7: Select Layer dropdown menu
- Step 8: Click on map button
- Step 9: Query window showing results

The Query window shows the following results:

NAME	GEOID
1	515102001071

## Look up a GEOID using American Fact Finder 2

Step A: Find the **State** and **County** codes for the GEOID.

Virginia (51)	Step 3 State	
County ANSI	County Name	Class
001	Accomack County	H1
003	Albemarle County	H1
199	York County	H1
510	Alexandria city	C7
515	Bedford city	C7
520	Bristol city	C7

Step 4 County

1. Go to <http://www.census.gov/geo/www/ansi/countylookup.html>.
2. Pick the State of interest and choose 'Go.'
3. Above the right column, you'll see the State name and two numbers in parentheses, this is the **State Code**, the first two numbers of the GEOID. Include the first zero, if applicable.
4. Next, find the County of interest and find the three digit number to the right, this is the **County Code**, digits 3-5 of the GEOID. If you don't know the county, open a second browser window and go to Step B. The name of the county will appear in the 'Geography Name' Column, under Geography Type 'County' (not shown).

Step B: Find the **Census Tract** and Block Group codes for the GEOID.

1. Go to <http://factfinder2.census.gov/main.html>.
2. Click on "Advanced Search" and "show me all."
3. Click on 'Geographies' from the left menu.
4. Click on 'Address' from the menu bar and enter the address and click 'Go.'
5. Under the Geography Name results look for the **Census Tract** and Block Group information. The Census Tract may or may not have a decimal, but do not use the decimal when constructing the GEOID. The Block Group number is the last number of the GEOID. The **Census Tract** will be digits 6-11 of the GEOID. In this example, that would look like **STCTY2001071**
6. If you did not know the county for Step A, that is also listed in the Geography Results box.

Step C: Putting it all together.

7. Combine the State Code, County Code, Census Tract, and Block Group into one 12-digit GEOID and search in the State eligibility files.

Your Selections  
"Your Selections" is empty

To search for tables and other files in American FactFinder

1 Enter search terms and an optional geography and click GO

Select Geographies

List Name Address Map

Enter a street address, city and state, or a street address and ZIP code. Click 'GO'

Note: address search will use the latest available address data beginning with 2012 and

street address city state zip

3101 Park Center Drive Alexandria Virginia 22302

Geographies containing 3101 Park Center Dr, ALEXANDRIA, VA, 22302:

Select geographies to add to Your Selections

Geography Results:

Geography Name	Geography Type
Virginia	State
Alexandria city, Virginia	County
Alexandria city, Alexandria city, Virginia	County Subdivision
Block 1007, Block Group 1, Census Tract 2001.07, Alexandria city, Virginia	Block
Census Tract 2001.07, Alexandria city, Virginia	Census Tract
Block Group 1, Census Tract 2001.07, Alexandria city, Virginia	Block Group within Census Tract

Step 3

Step 5

## How to map a Census Block Group using GEOID

1. Go to <http://tigerweb.geo.census.gov/tigerweb/default.htm> \*this website requires [Microsoft Silverlight \(5.0\)](#)
2. When the window opens a 'Map Content' box will be showing, check the 'Transportation' box and then close the window by clicking on the 'X' in the upper right corner.
3. Select the Query button which looks like a globe with binoculars.
4. Next, in the 'Select Map' pull down menu, chose 'Census Tracts and Blocks.'
5. In the field called 'Select Layer,' highlight 'Census Block Groups.'
6. Copy and paste the GEOID from the State eligibility file column labeled 'GEOID' into the field labeled 'GEOID.'
7. Click 'Submit Query.'

