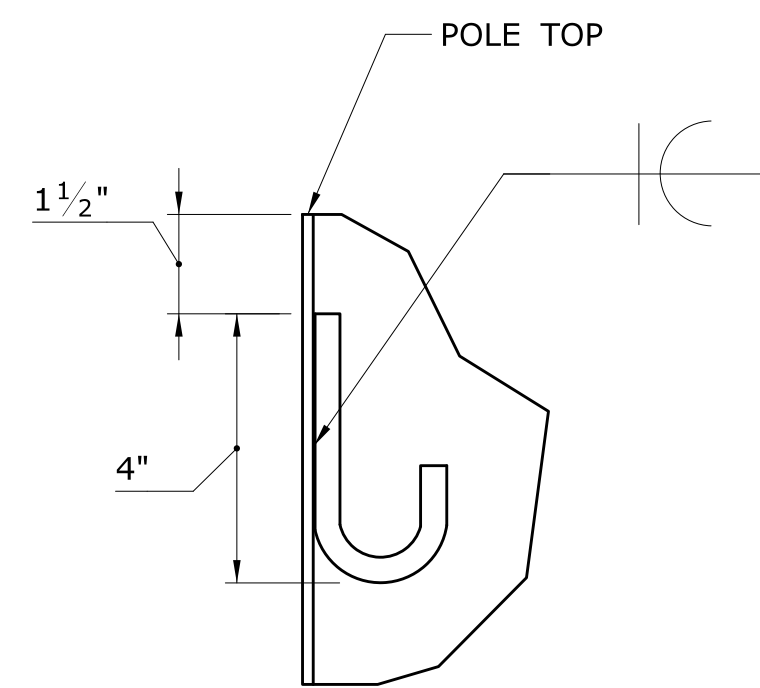
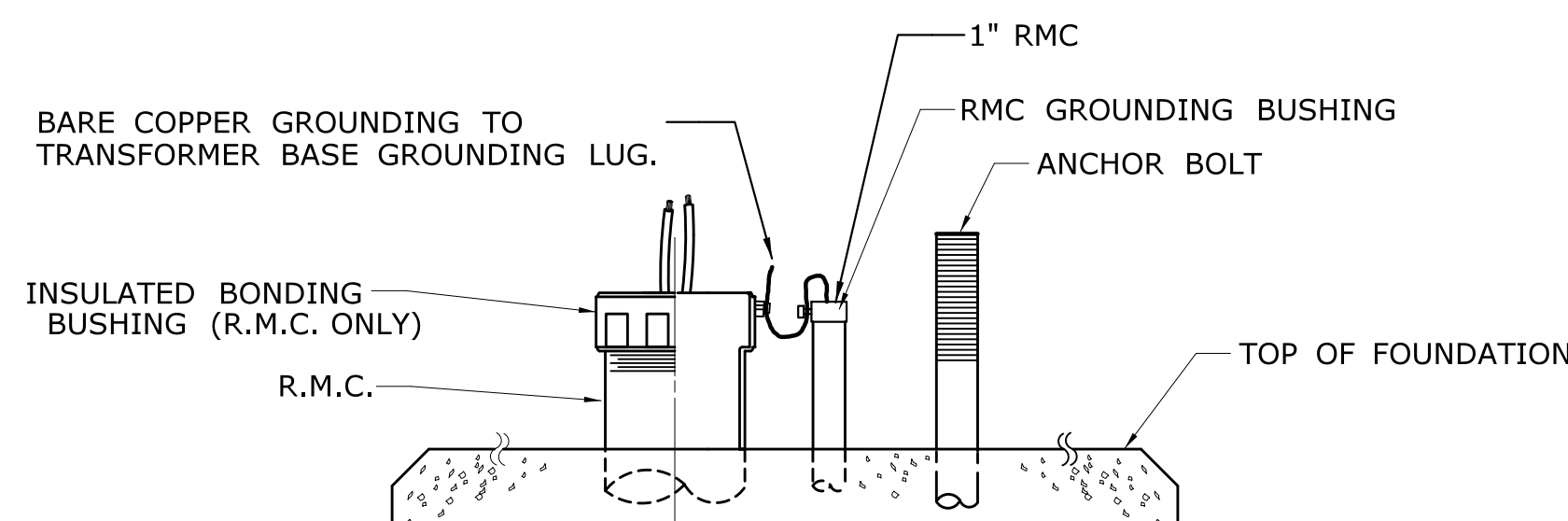


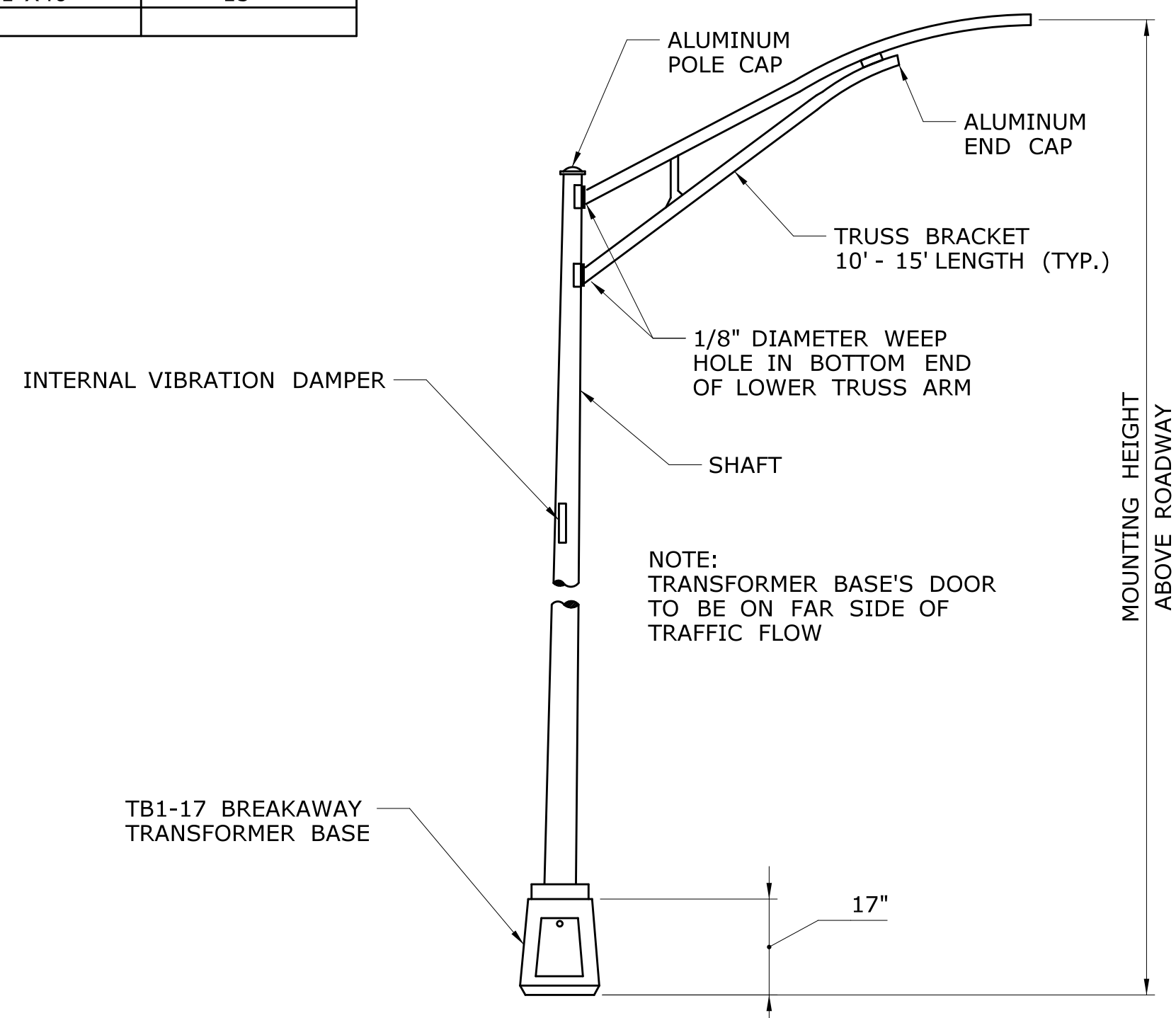
ALUMINUM LIGHT STANDARD - DIMENSION TABLE								
ITEM NO.	MOUNTING HEIGHT	BRACKET LENGTH	SHAFT DIAMETER		SHAFT WALL THICKNESS	BASE TYPE	ANCHOR BOLT SIZE	BOLT CIRCLE DIAMETER
			BOTTOM	TOP				
1003206	30'	15'	8"	6"	0.188"	TRANSFORMER	1"X40"	15"



**J-HOOK MOUNTING
DETAIL**

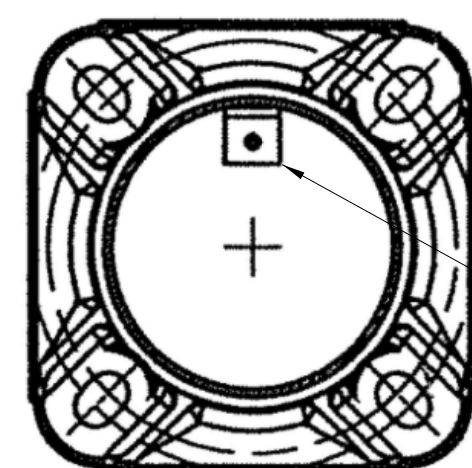


**CONDUIT TERMINATION AT
VEHICLE DETECTOR LIGHT STANDARD BASE**

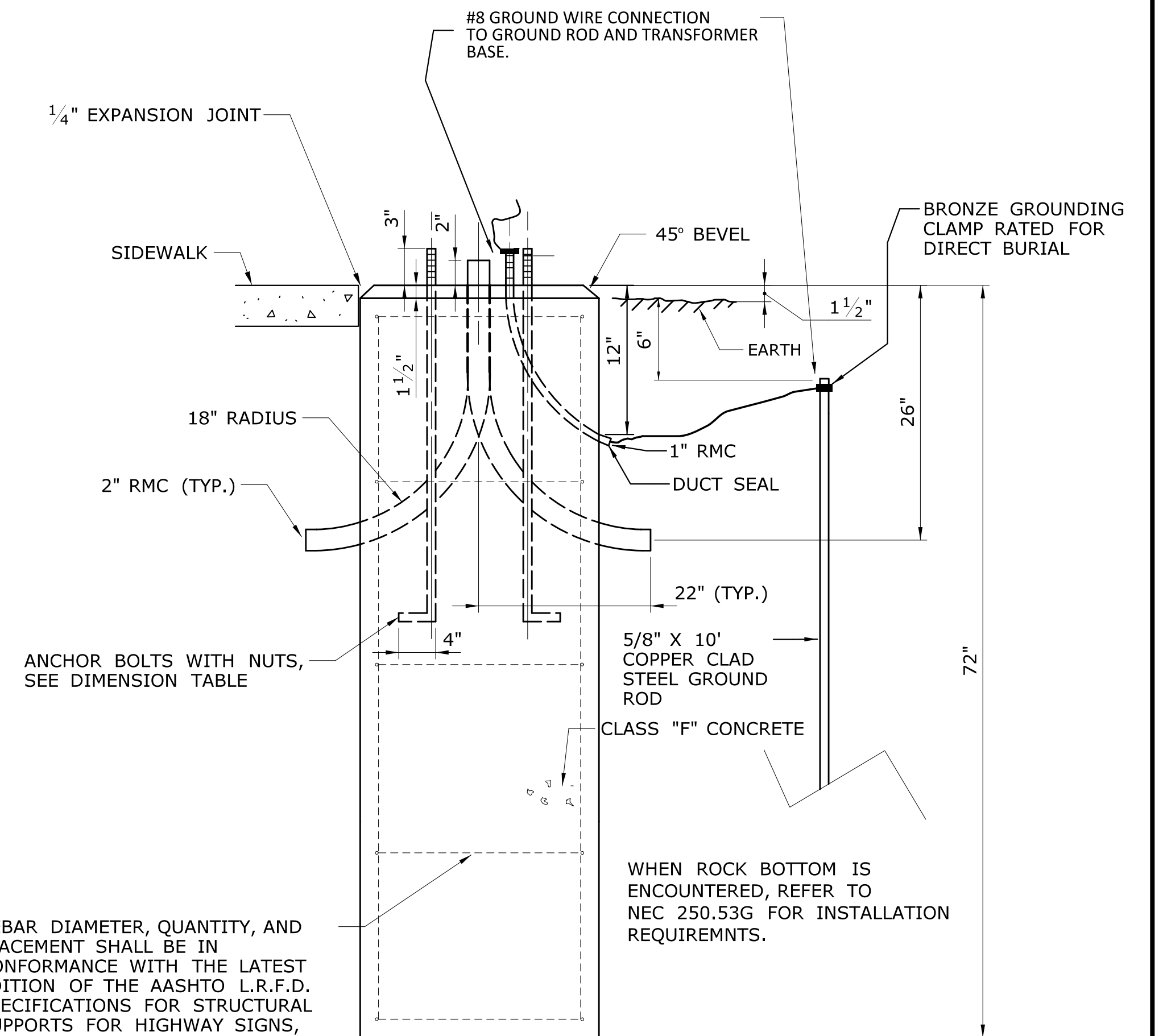
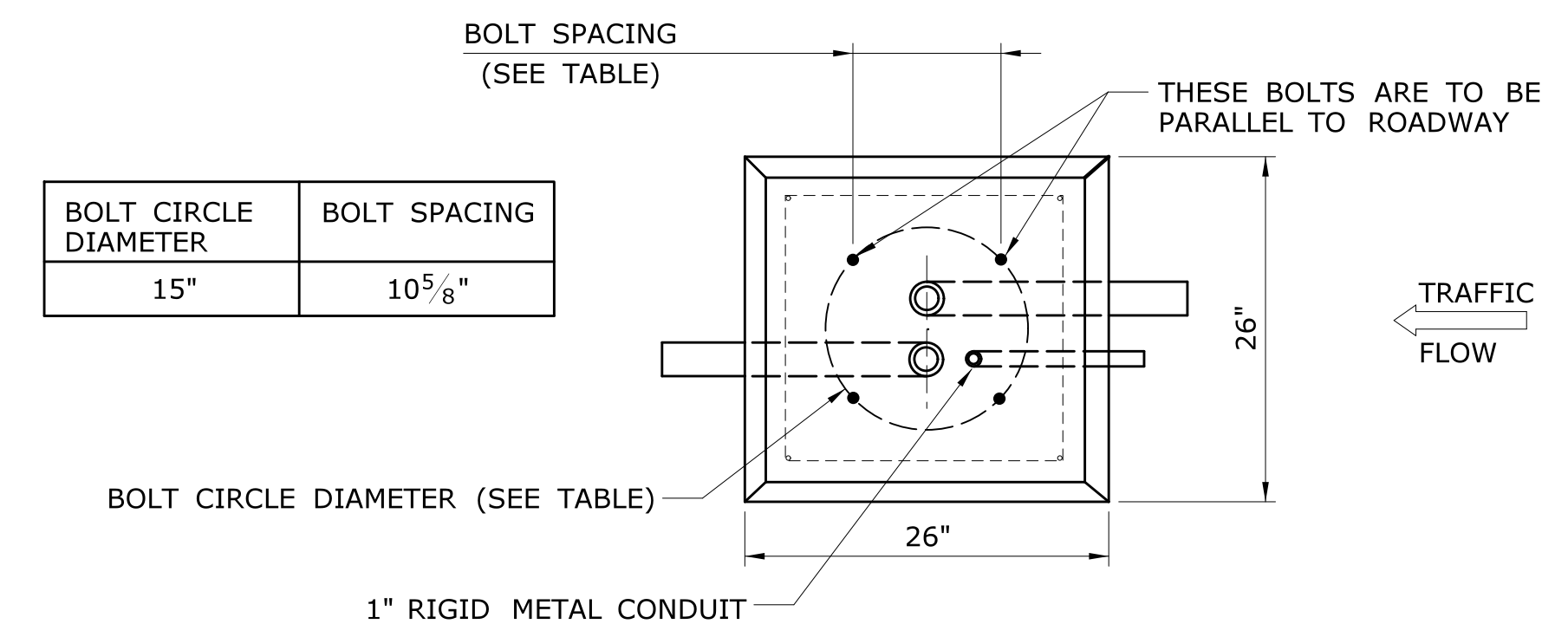


ALUMINUM LIGHT STANDARD FOR VEHICLE DETECTOR

NOTE:
TRANSFORMER BASE DOOR TO BE ON FAR SIDE OF TRAFFIC FLOW.
TOP 2'-6" OF SHAFT IS NOT TAPERED.
REFER TO SIGNAL PLANS FOR BRACKET LENGTHS.



ALUMINUM LIGHT STANDARD BASE



REBAR DIAMETER, QUANTITY, AND PLACEMENT SHALL BE IN CONFORMANCE WITH THE LATEST EDITION OF THE AASHTO L.R.F.D. SPECIFICATIONS FOR STRUCTURAL SUPPORTS FOR HIGHWAY SIGNS, LUMINAIRES AND TRAFFIC SIGNALS, INCLUDING THE LATEST INTERIM SPECIFICATIONS

LIGHT STANDARD FOUNDATION - TYPE I

LIGHT STANDARD NOTES:

- ALUMINUM ALLOY SHALL BE 6063, T6 TEMPER.
- BOLT CIRCLE SHOWN IS FOR TRANSFORMER BASE BOTTOM.
- TO BE DESIGNED TO AASHTO "STANDARD SPECIFICATION FOR STRUCTURAL SUPPORTS FOR HIGHWAY SIGNS, LUMINAIRES AND TRAFFIC SIGNALS" FOR 90 M.P.H. WINDS.
- WELDING DESIGN AND FABRICATION SHALL CONFORM TO THE LATEST EDITION OF THE ANSI/AWS D1.2, STRUCTURAL WELDING CODE - ALUMINUM.
- FOR BASE CONNECTION WELDS, FABRICATION INSPECTION AND TESTING SHALL BE PERFORMED AS NECESSARY PRIOR TO ASSEMBLY, DURING ASSEMBLY, DURING WELDING, AND AFTER WELDING, TO ENSURE THAT MATERIALS AND WORKMANSHIP MEET THE REQUIREMENTS OF THE CONTRACT DOCUMENTS. FABRICATION INSPECTION AND TESTING IS THE RESPONSIBILITY OF THE CONTRACTOR. VERIFICATION INSPECTION AND TESTING IS THE PREROGATIVE OF THE ENGINEER (CONNDOT).
- NON-DESTRUCTIVE TESTING FOR ALUMINUM SHALL BE AS FOLLOWS: A RANDOM 25% OF ALL BASE CONNECTION WELDS SHALL BE INSPECTED IN ACCORDANCE WITH ASTM E-165 STANDARD PRACTICE FOR LIQUID PENETRANT INSPECTION METHOD.

REV. DATE	REVISION DESCRIPTION	SHEET NO.	Plotted Date: 11/14/2019	DESIGNER/DRAFTER:	CHECKED BY:	NO SCALE	<p>STATE OF CONNECTICUT DEPARTMENT OF TRANSPORTATION</p> <p>Filename: ...CTDOT_TRAFFIC_GS-LS_AND_FOUND(10-11-2019).dgn</p>	SIGNATURE/ BLOCK: APPROVED BY: DATE:	PROJECT TITLE:	TOWN:	PROJECT NO.
DRAWING TITLE: LIGHT STANDARD & FOUNDATION FOR VEHICLE DETECTION											
SHEET NO.											