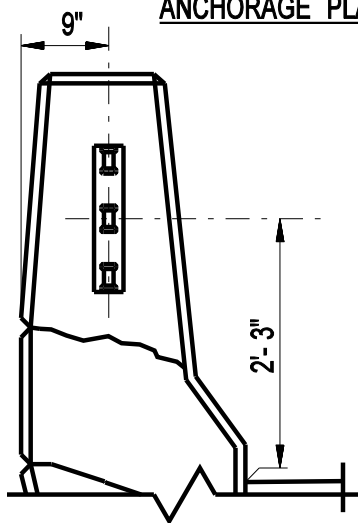
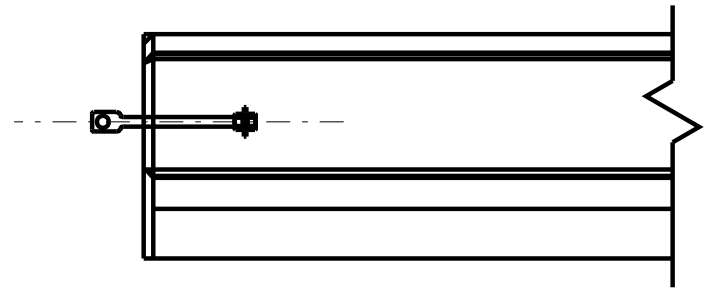


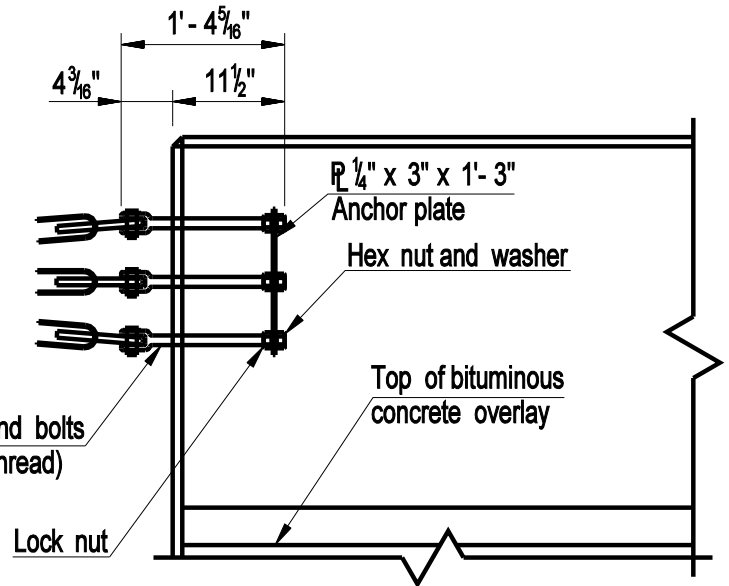
ANCHORAGE PLATE



END VIEW



PLAN



ELEVATION

Notes:

1. The shackle end bolts shall conform to the requirements of ASTM A688 Class E or AISI 1035 forged steel, galvanized in accordance with the requirements of ASTM A153.
2. The standard hex nuts, anchor plates and lock nuts shall conform to the requirements of ASTM A36.
3. Longitudinal reinforcement in parapet to clear anchor plate.
4. All anchorage material shall be paid for as part of the pay item "End Anchorage - Bridge Type" (Roadway Item).

DESIGN INFORMATION

This detail to be used to anchor Three-Cable Guide Railing at trailing end of 3'-6" high parapets with sloped curb on one-way roads.

BRIDGE PLATES 8.3.2 THROUGH 8.3.3d DELETED, 12/19

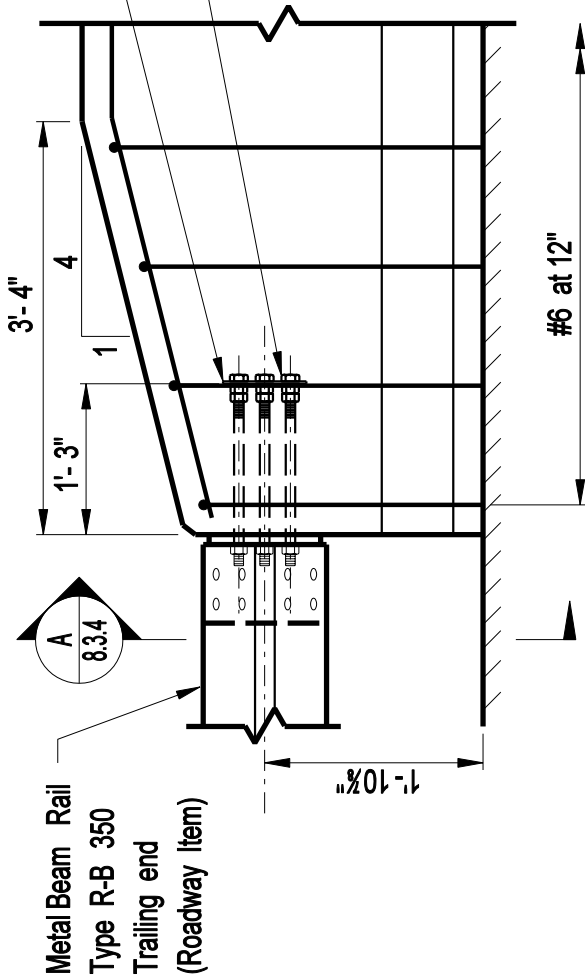
**CONNECTICUT
BRIDGE DESIGN
MANUAL**

PARAPET ANCHORAGE
THREE CABLE GUIDE
RAILING (Type II)

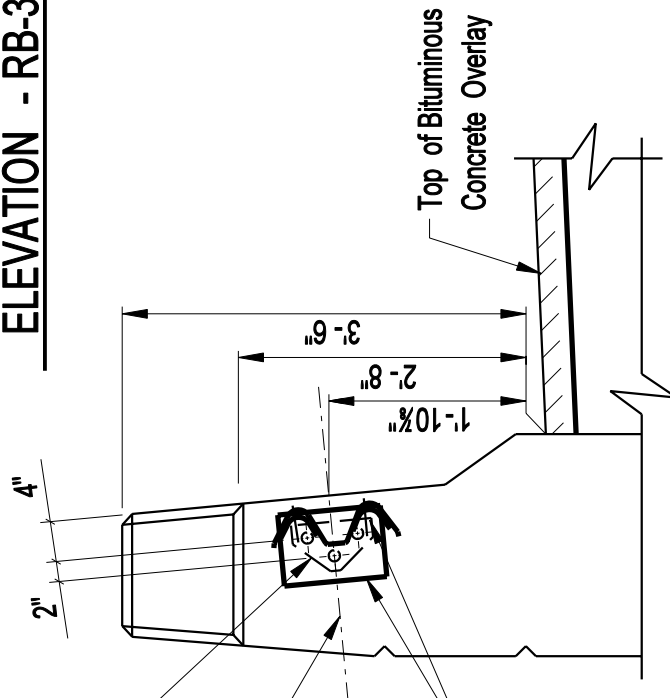
Issue Date: 10/03

Revision Date: 12/19

Plate Number:
8.3.2



ELEVATION - RB-350 RAIL



**DETAIL
ANCHORAGE PLATE**

1/2" anchorage plate. See Anchorage Plate Detail
 Anchorage plate is to be set perpendicular to front parapet face.
 Connection Plates See Roadway Dwgs.

DESIGN INFORMATION:
This detail to be used at trailing ends on uni-directional roadways only.

VIEW A 8.3.4

TRAILING END R-B 350 RAIL ATTACHMENT

BRIDGE PLATES 8.3.5a THROUGH 8.3.8 DELETED, 12/19

**CONNECTICUT
BRIDGE DESIGN
MANUAL**

**SAFETY SHAPE TRANSITION FOR
BEAM RAIL ATTACHMENT
STANDARD PARAPET 32" HIGH
LEADING END**

Issue Date: 10/03

Revision Date: 12/19

Plate Number:
8.3.5a

PLAN NOTES:

1. Steel plates shall conform to the requirements of ASTM A36. The steel plates shall be hot-dip galvanized in accordance with the requirements of ASTM A123.
2. Anchor bolts shall conform to the requirements of ASTM A325, mechanically galvanized.
3. 1" ϕ pipe shall conform to ASTM A53 Grade B or ASTM A501 and shall be galvanized in accordance with the requirements of ASTM A123.
4. Railway elements shall be paid for under the applicable Roadway items.
5. All rail anchorage material required for end attachments shall be paid for under the applicable Roadway items.

DESIGN INFORMATION

1. ***Beam rail notes to be included on construction plans with all beam rail attachment details.***

BRIDGE PLATES 8.3.9a THROUGH 8.3.9d DELETED, 12/19

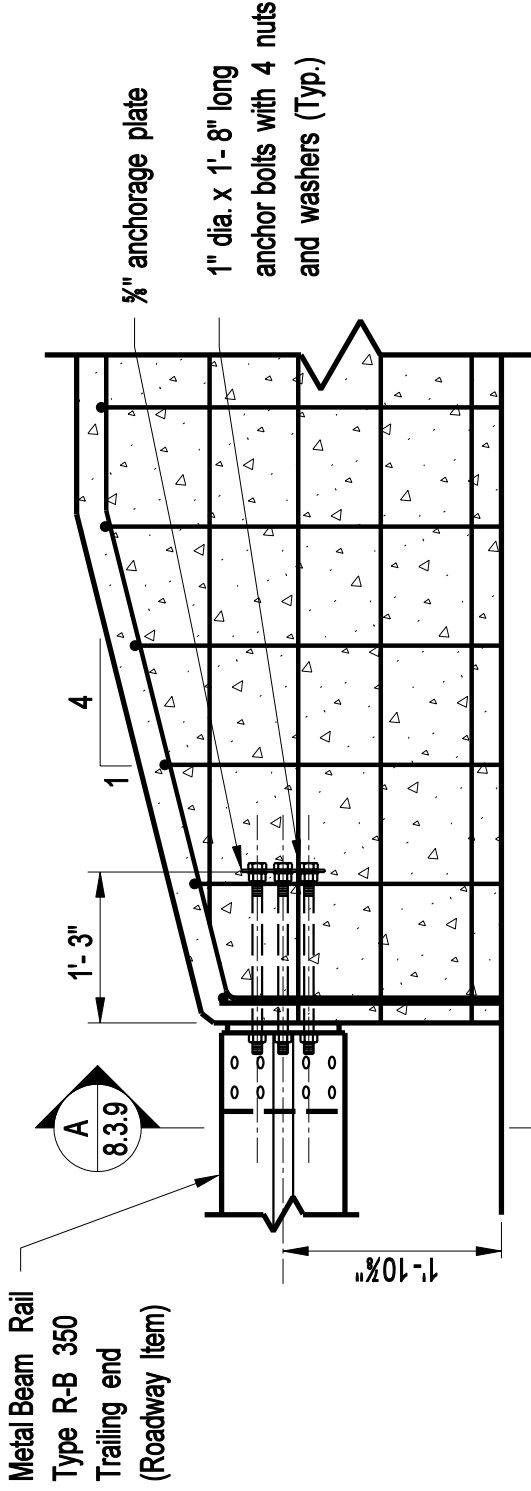
**CONNECTICUT
BRIDGE DESIGN
MANUAL**

BEAM RAIL ATTACHMENT FOR
RECONSTRUCTED VERTICAL FACE
PARAPET WITH SIDEWALK
42" HIGH - LEADING END

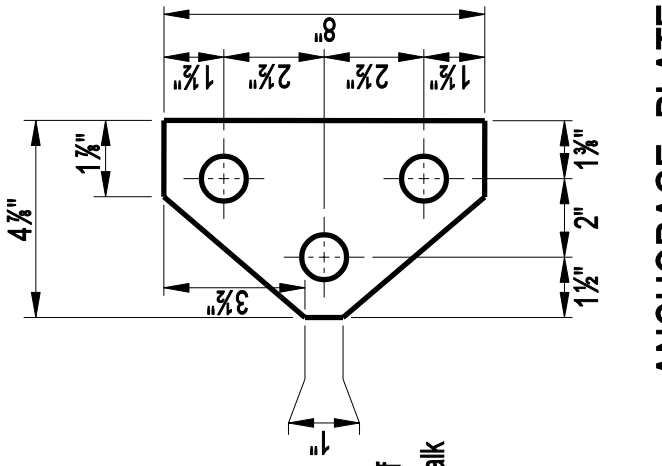
Issue Date: 10/03

Revision Date: 12/19

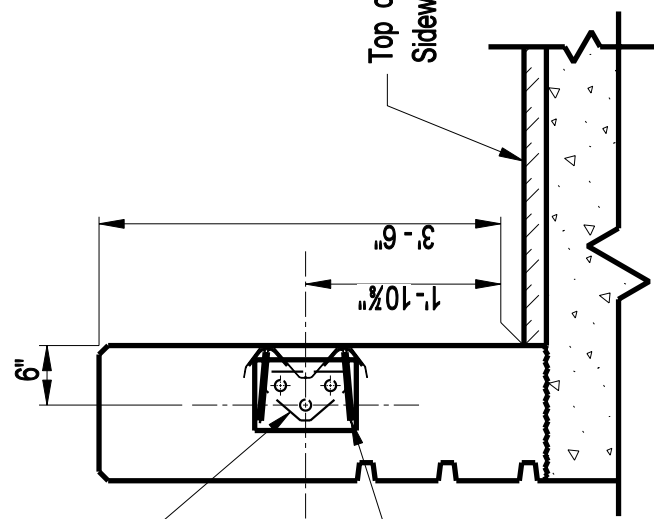
Plate Number:
8.3.9a



ELEVATION



**ANCHORAGE PLATE
DETAIL**



SECTION B

1/2" anchorage plate.
See Anchorage Plate
Detail

⊥ Anchorage plate is to
be set perpendicular to
front parapet face.

Connection Plates
See Roadway Dwgs.

DESIGN INFORMATION:

*This detail to be used at
trailing ends on uni-directional
roadways only.*

8.3.9a

TRAILING END R-B 350 RAIL ATTACHMENT