

PLAN NOTES:

1. Remove new bituminous concrete overlay and membrane waterproofing. Replace with Asphaltic Plug Expansion Joint System. To be paid for under the item "Asphaltic Plug Expansion Joint System". (See Special Provision)

DESIGN GUIDELINES:

1. *Asphaltic Plug Expansion System shall be used at fixed and expansion joints with computed movements from 0" to 1½" based on a moderate climate in accordance with AASHTO.*
2. *Asphaltic Plug Expansion joints shall be installed when the ambient air temperature is between 40° F and 80° F.*
3. *Bituminous Concrete Overlay depth shall be indicated.*

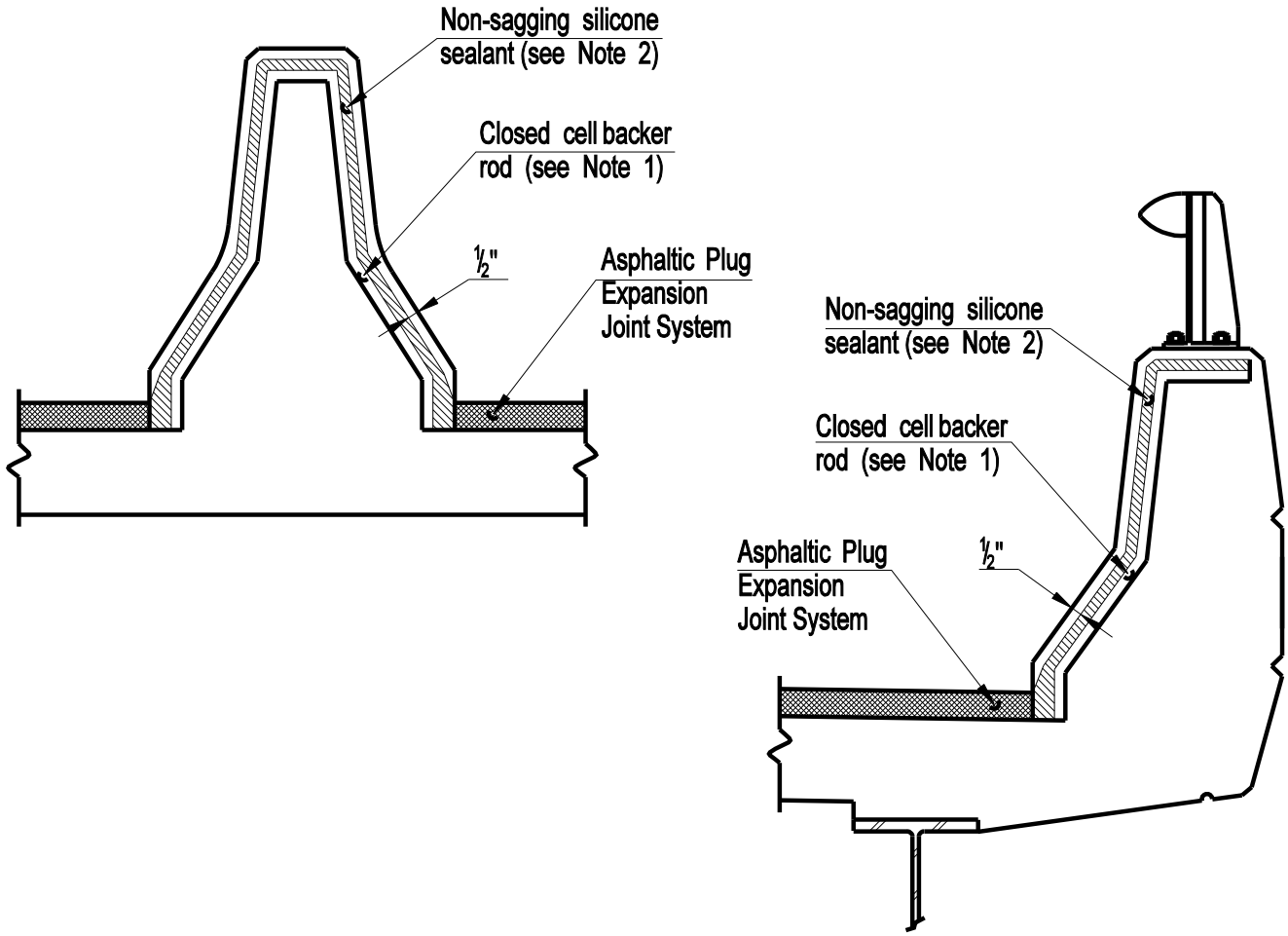
**CONNECTICUT
BRIDGE DESIGN
MANUAL**

ASPHALTIC PLUG
EXPANSION JOINT SYSTEM

Issue Date: 10/05

Revision Date: 2/11

Plate Number:
7.1.1a



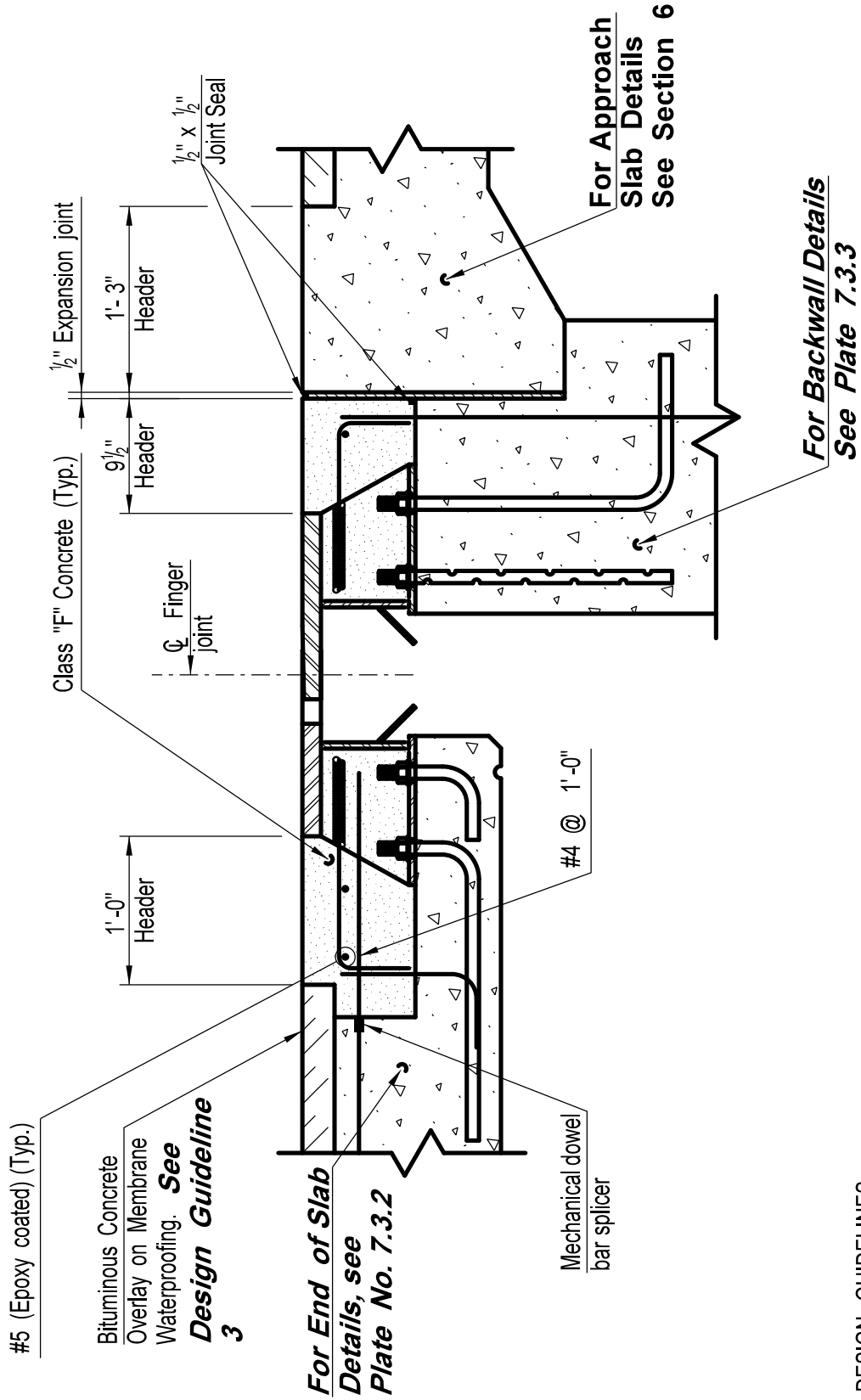
**ASPHALTIC PLUG EXPANSION JOINT TREATMENT
AT PARAPETS AND MEDIAN BARRIER**

NOTES:

- 1: The Closed Cell Backer Rod shall be placed a minimum of 2" from the outside face of parapets and median barriers.
- 2: The non-sagging silicone sealant shall be placed on the backer rod 1/2" thick. At the gutter, the silicone sealant shall be placed flush with the outside face of concrete.
- 3: Prior to installing the silicone sealant, clean joint sides by sandblasting. Dust shall be removed by the method approved by the Engineer. This work shall be paid for under the item "Asphaltic Plug Expansion Joint System". (see special provisions)

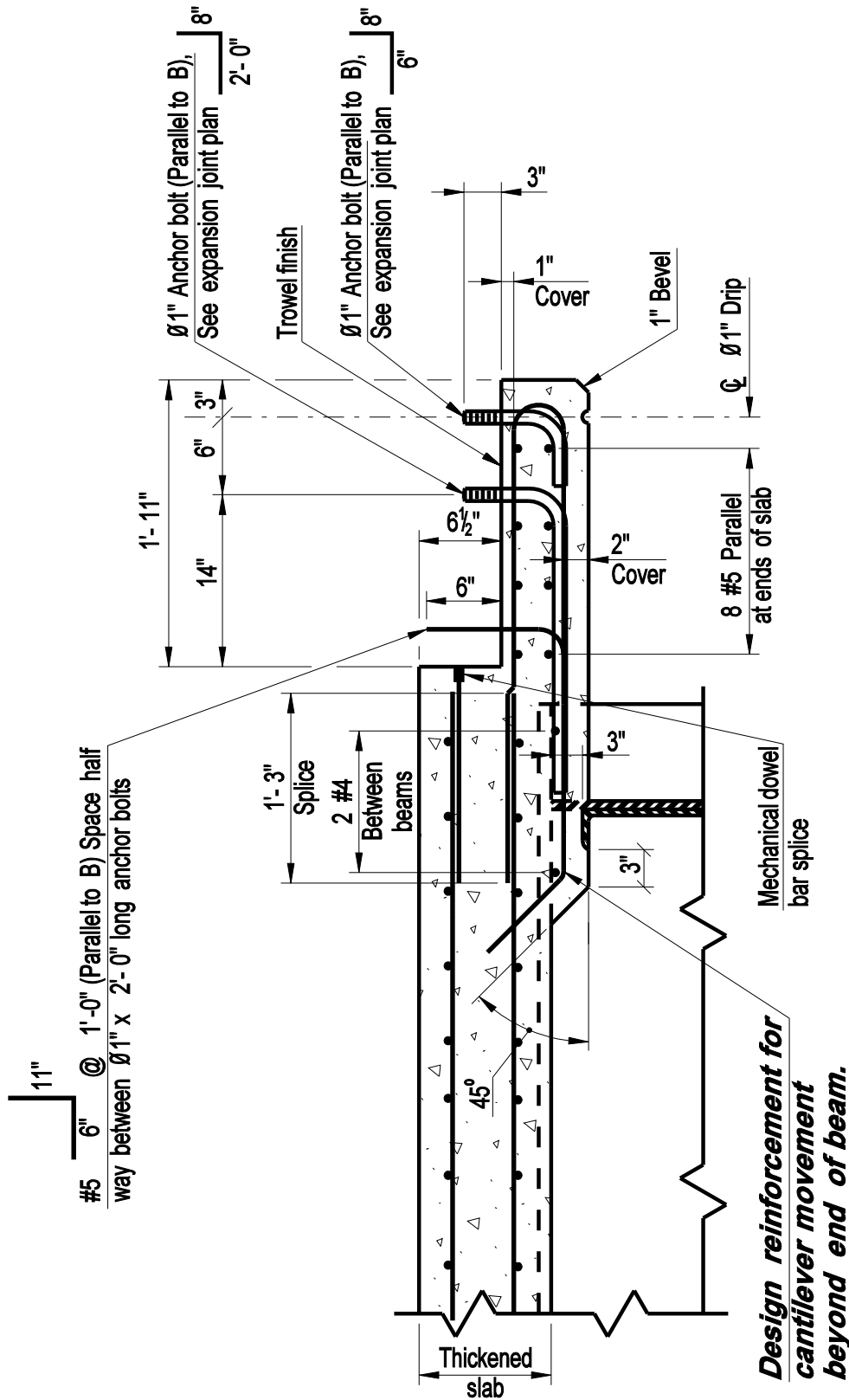
BRIDGE PLATES 7.2.1a THROUGH 7.2.1e DELETED, 2/2019

CONNECTICUT BRIDGE DESIGN MANUAL	ELASTOMERIC CONCRETE EXPANSION SYSTEM	Issue Date: 10/03 Revision Date: 2/19 Plate Number: 7.2.1a
---	--	--

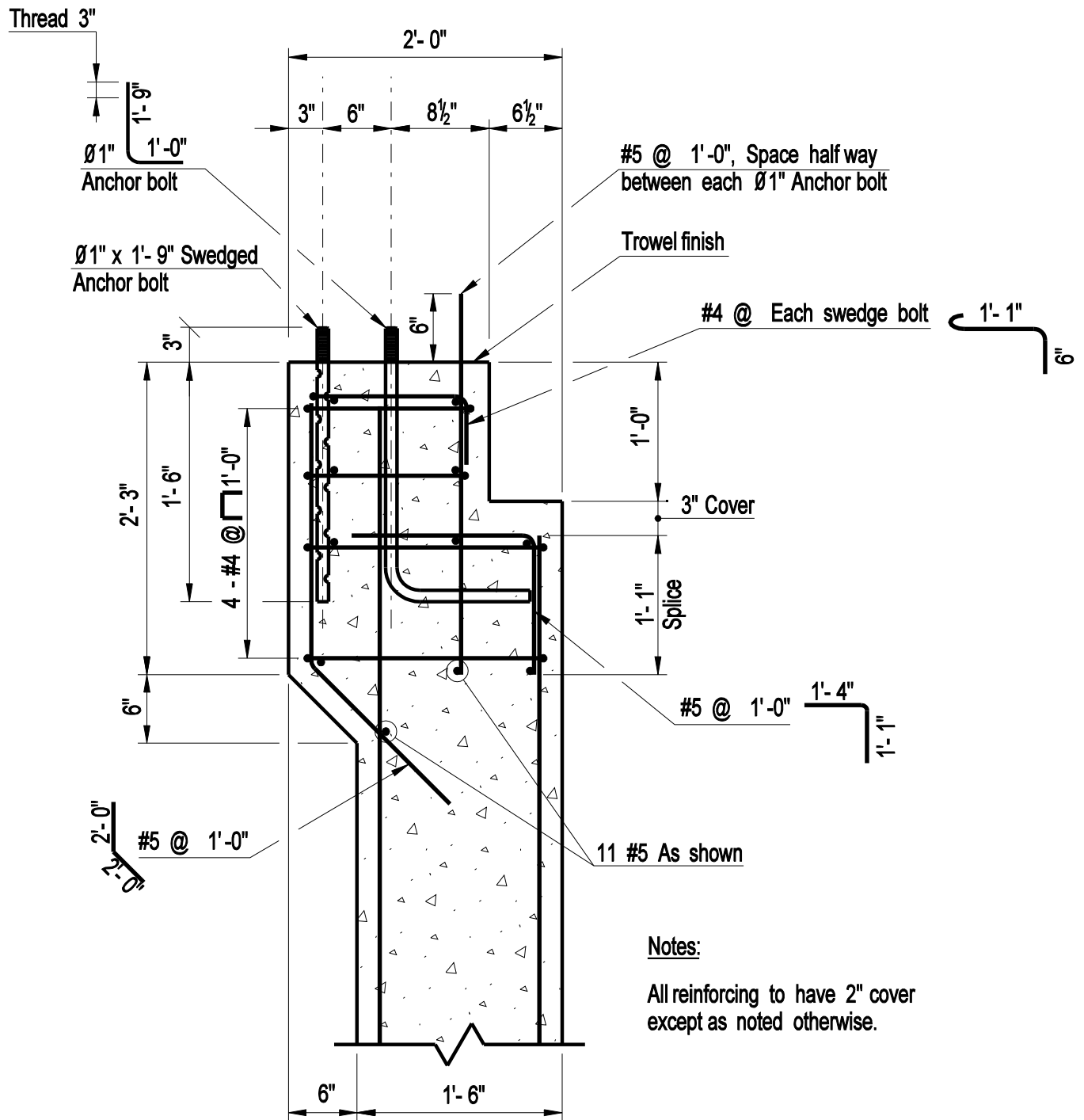


DESIGN GUIDELINES:

1. Finger joints to be used for joint movement greater than 4" at pedestal type abutments only, (See Plates 3.1.2a thru 3.1.2e)
2. All structural steel, weldable bars and anchor bolts shall be included in the pay item for "Finger Joint".
3. Depth of Bituminous Overlay shall be indicated.

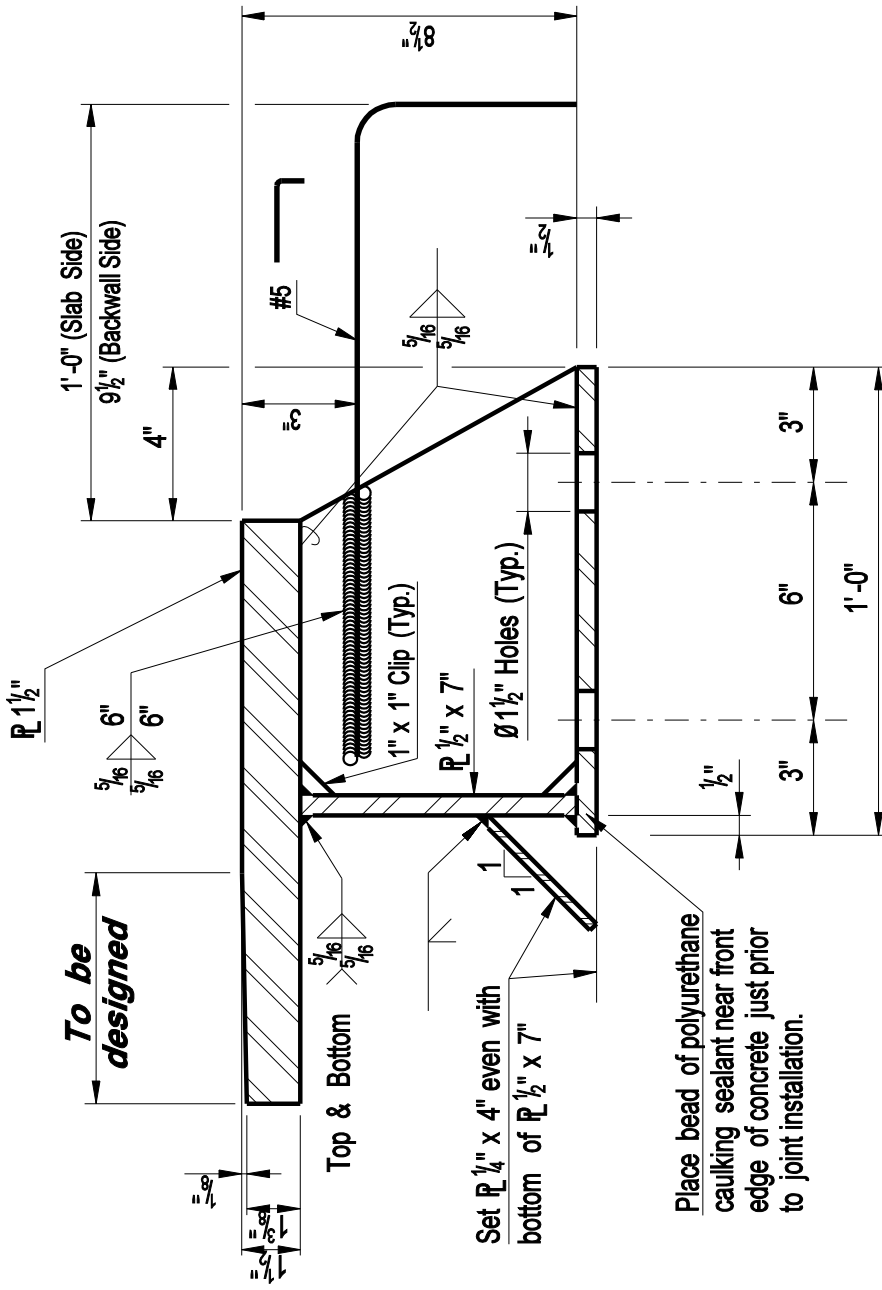


SECTION AT END OF SLAB

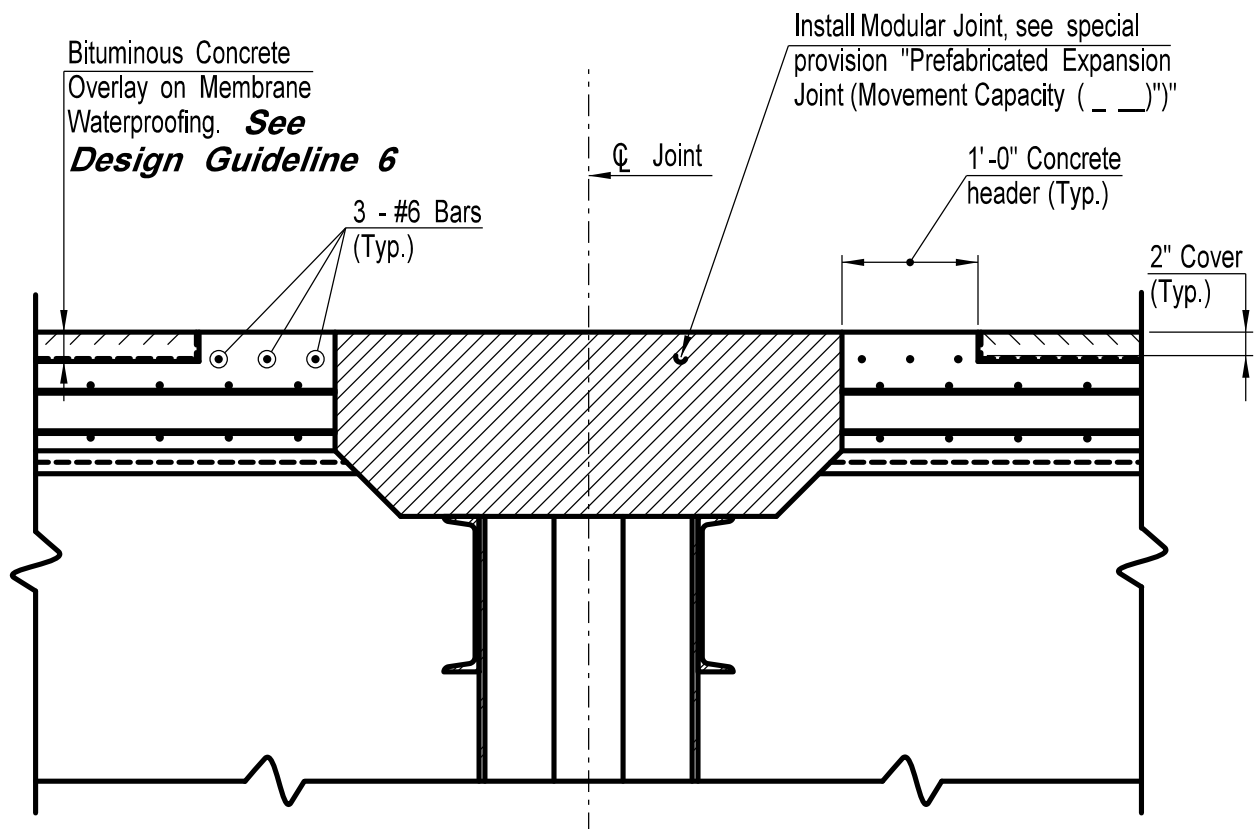


Notes:

All reinforcing to have 2" cover except as noted otherwise.



SECTION AT FINGER JOINT



TYPICAL SECTION

PLAN NOTES:

1. See special provision "Prefabricated Expansion Joint (Movement Capacity (_ _)").

DESIGN GUIDELINES:

1. The temperature range used for computation of movement shall be based on a moderate climate in accordance with AASHTO.

2. The required movement capacity of each joint shall be determined by the Designer and shown on the plans.

3. The contract plans shall show a blocked out area for the Modular Joint. The manufacturer will be responsible for the joint and anchorage details in accordance with the special provisions.

4. Modular joints should be used for joint movements greater than 4" at piers.

5. Depth of Bituminous Concrete overlay shall be indicated.

**CONNECTICUT
BRIDGE DESIGN
MANUAL**

**MODULAR EXPANSION
JOINT SYSTEM**

Issue Date: 10/03

Revision Date: 2/11

Plate Number:
7.4.1

BRIDGE PLATES 7.5.1a THROUGH 7.5.1e DELETED, 2/2019

CONNECTICUT BRIDGE DESIGN MANUAL	SILICONE EXPANSION JOINT SYSTEM	Issue Date: 10/03 Revision Date: 2/19 Plate Number: 7.5.1a
---	--	---