

CONNECTICUT'S EFFORT TO COMPLETE THE EAST COAST GREENWAY



PRESENTER:

**VITALIJ STAROVEROV, P.E.
CT DOT – HIGHWAY DESIGN**

200 SPINE ROUTE MILES

OFF-ROAD

ON-ROAD

90 miles
completed



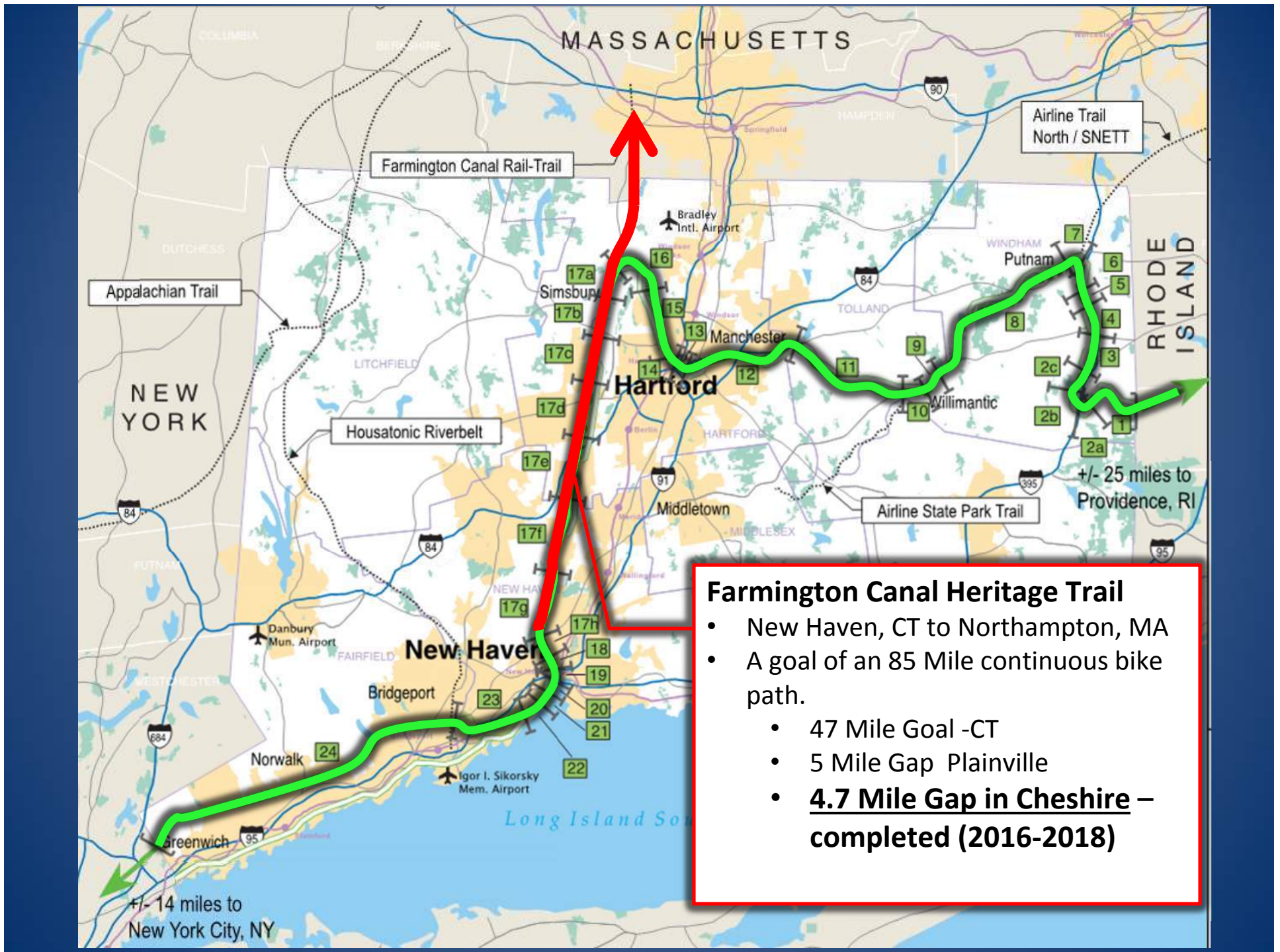
Farmington Canal
Heritage Trail

Charter Oak
Greenway



The East Coast Greenway
in Connecticut





Farmington Canal Heritage Trail

- New Haven, CT to Northampton, MA
- A goal of an 85 Mile continuous bike path.
 - 47 Mile Goal -CT
 - 5 Mile Gap Plainville
 - **4.7 Mile Gap in Cheshire – completed (2016-2018)**



**Designed and Constructed by
Town of Cheshire**

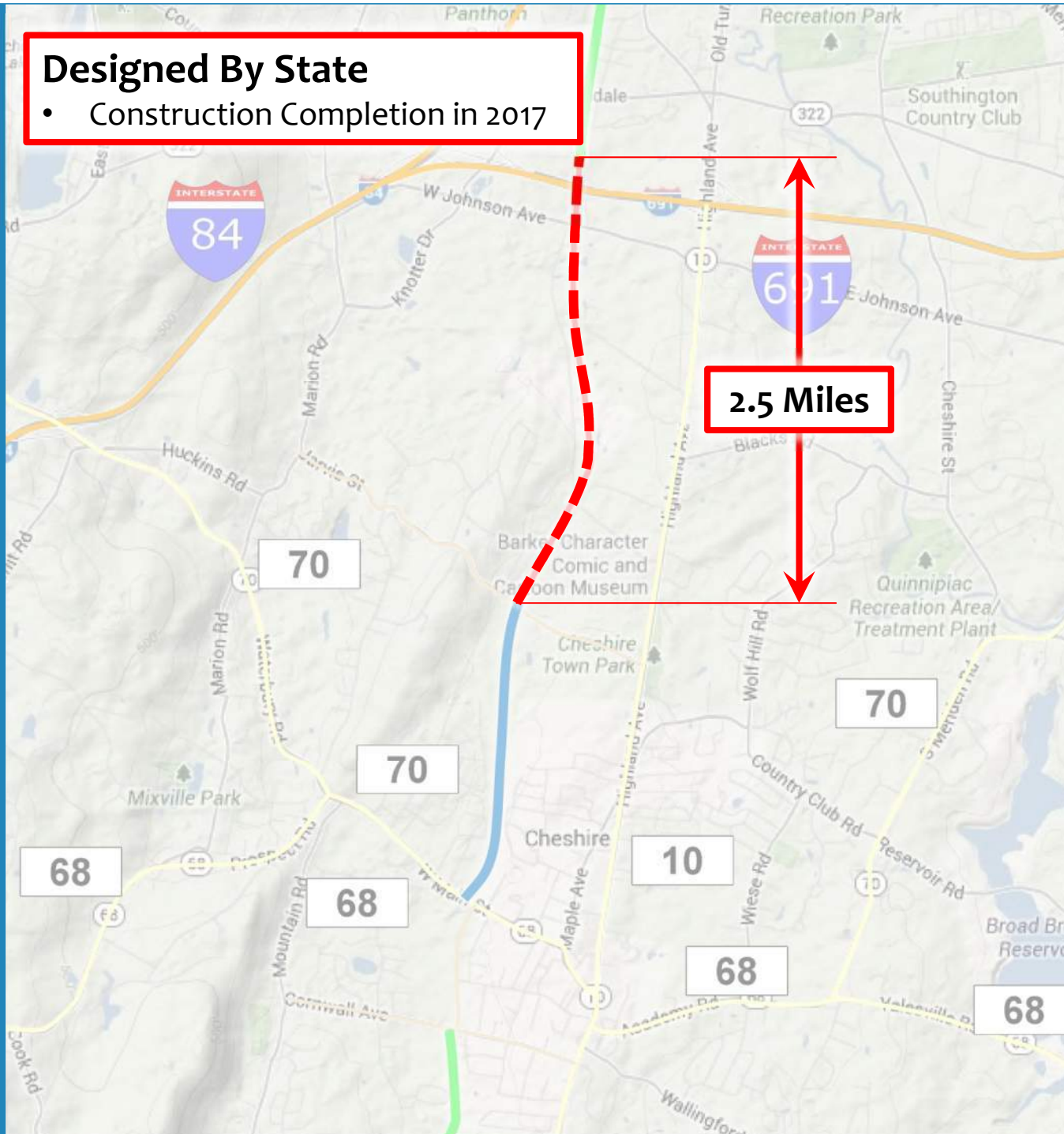
- Construction Completion 2017



Designed By State

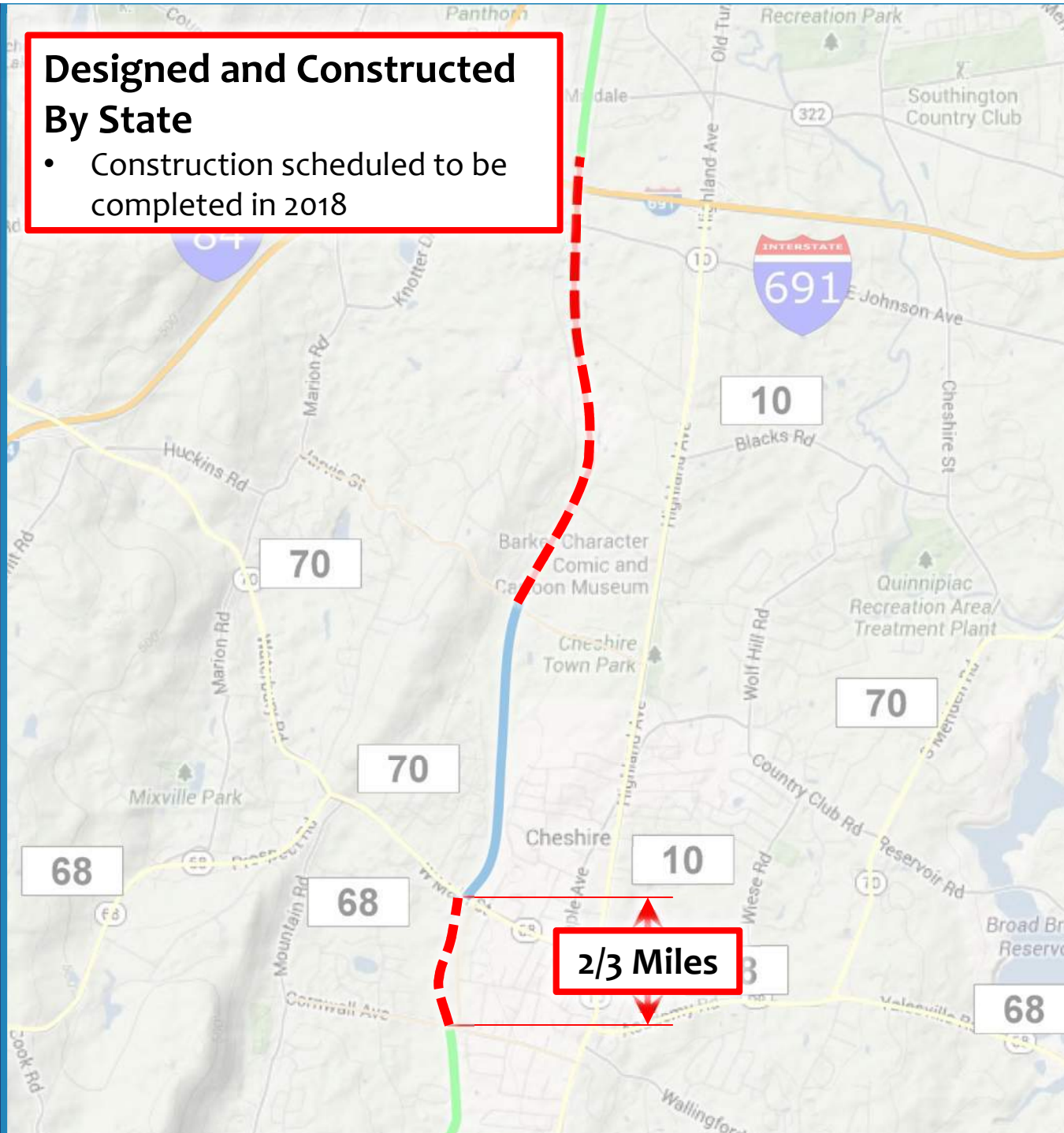
- Construction Completion in 2017

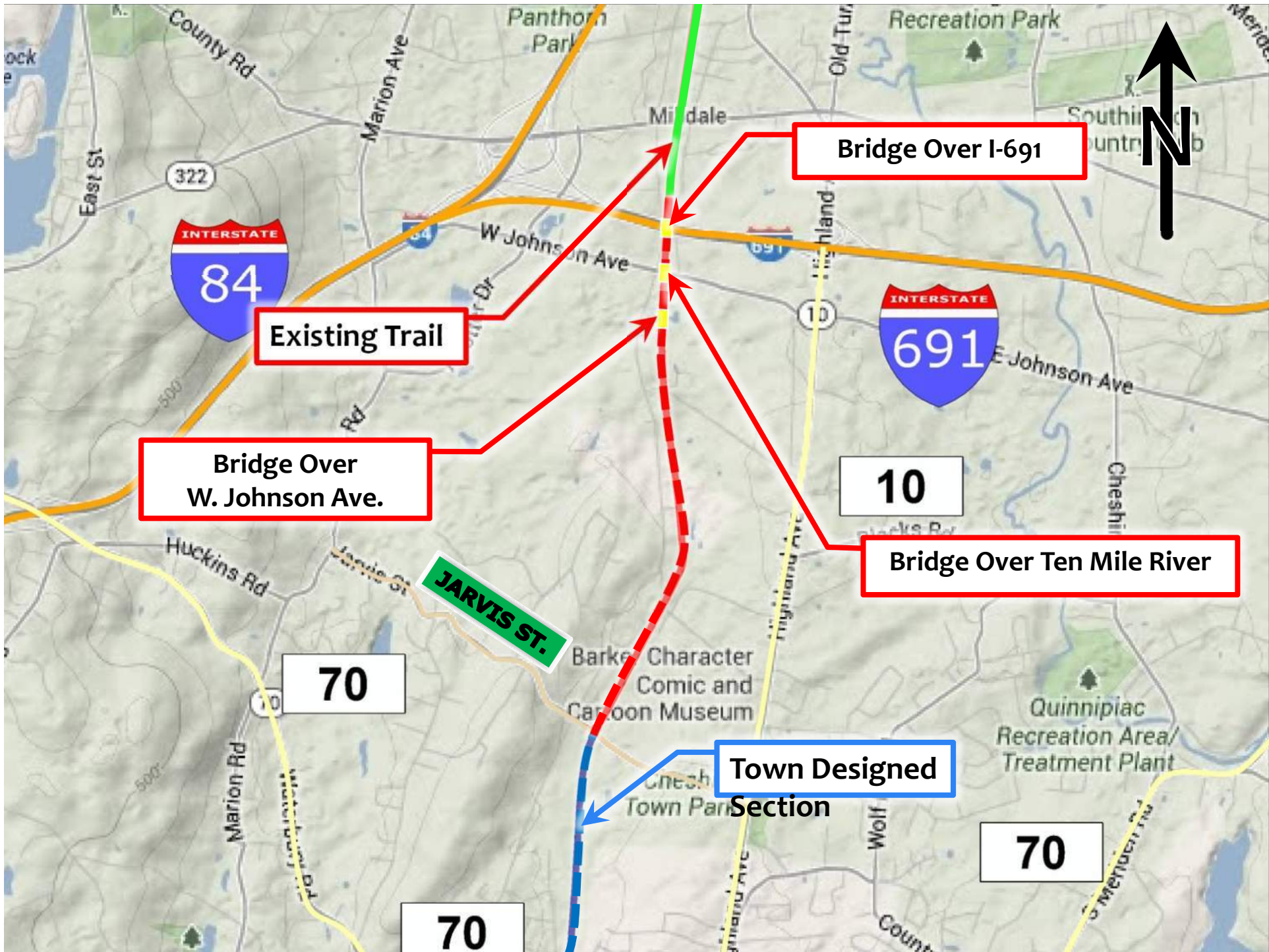
2.5 Miles



Designed and Constructed By State

- Construction scheduled to be completed in 2018





CHALLENGES – TRAIL CLEAN UP



CHALLENGES – TRAIL CLEAN UP



BEFORE CLEARING



**AFTER
CLEARING FOR
SURVEYING**

CHALLENGES – INDUSTRIAL PROPERTY OWNERS ALONG THE TRAIL



- Unauthorized use of the state property

UNAUTHORIZED USE OF CORRIDOR



CHALLENGES – INDUSTRIAL PROPERTY OWNERS ALONG THE TRAIL

BEFORE



- Unauthorized use of the state property



CHALLENGES – INDUSTRIAL PROPERTY OWNERS ALONG THE TRAIL

BEFORE



- Unauthorized use of the state property

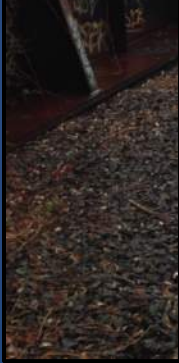
AFTER



- Chain-link fence installed with privacy slats to enhance trail user experience and eliminate unauthorized use of state property

BRIDGES

- STRUCTURALLY SOUND
- 2' OF BALLAST MATERIAL
- GRAFFITI
- NO PEDESTRIAN PROTECTION



BRIDGES

BEFORE



AFTER



BRIDGE OVER TEN MILE RIVER

BEFORE



AFTER



BRIDGE OVER WEST JOHNSON AVENUE

BEFORE



AFTER



SAFETY CHAIN LINK FENCE (W/PRIVACY SLATS)

- To enhance trail user experience
- Screen industrial properties



SAFETY – THREE RAIL FENCE



- Protect steep drop offs (2H:1V)



SAFETY – TIMBER RAIL

- Separate trail users from traffic
- At local road crossings to guide trail users



SAFETY - BRIDGE RAIL TRANSITIONS

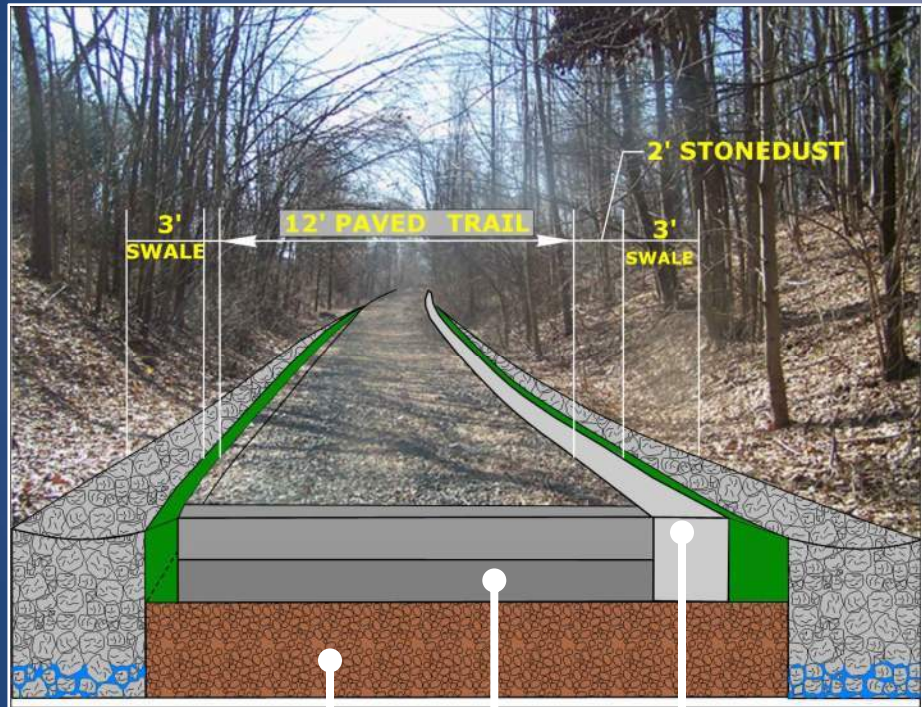
AVOID LEAVING BLUNT ENDS



Curved chain-link fence

Wood Rail along bridges to protect trail users from severe injuries

TYPICAL TRAIL SECTIONS



2.75" STONEDUST

2.75" HMA PAVEMENT

6" PROCESS AGREGATE BASE

3' DRIANGE SWALES FOR FILL SLOPES

SAFETY – SPEED TABLES



TRAIL AMENITIES



TRASH CANS



DOG WASTE STATIONS



REMOVABLE BOLLARDS



CHAIN

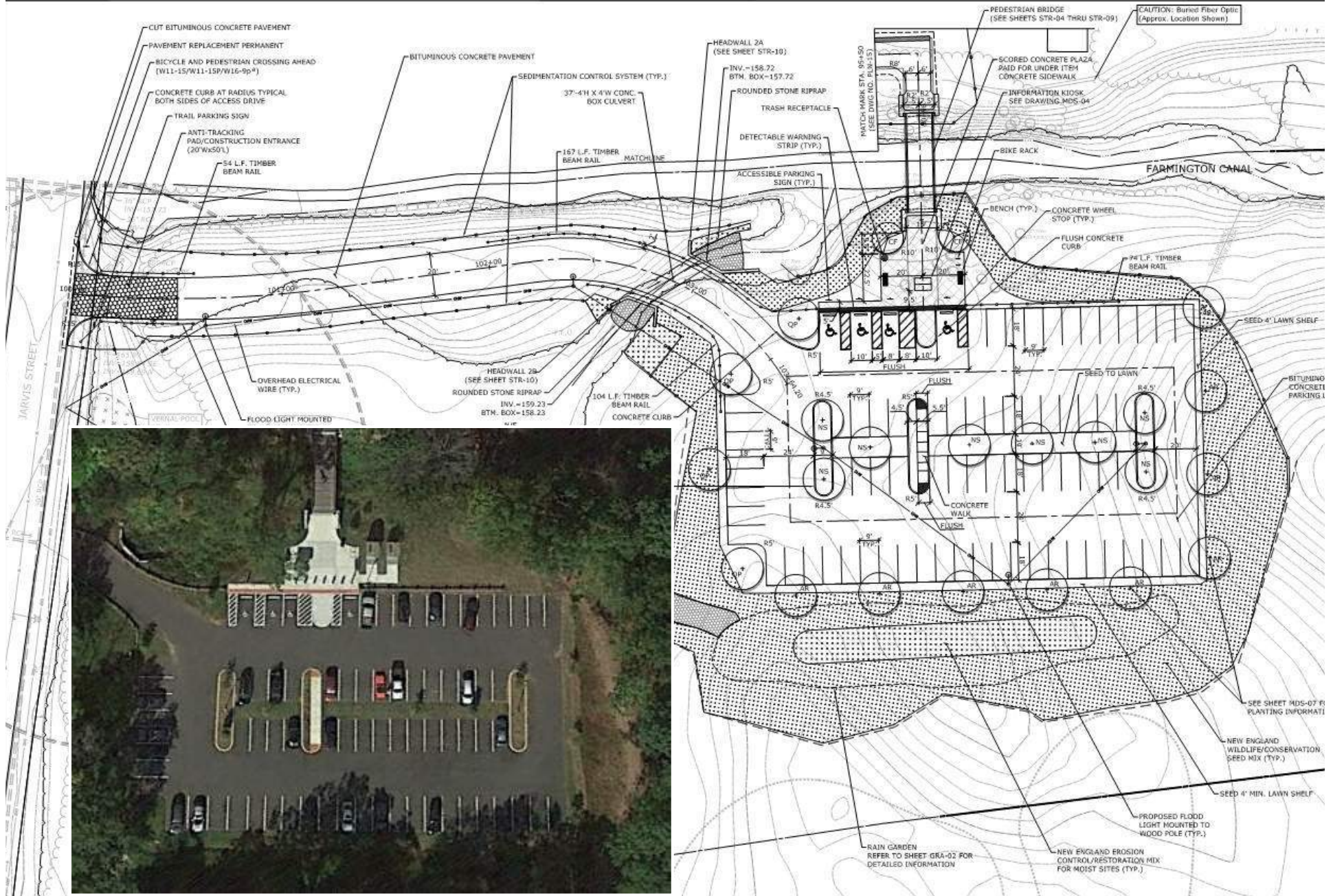


PICNIC TABLES



BENCHES

PARKING LOT - 77 SPACES



TRAIL AMENITIES

**1. ASSEMBLED OFF SITE
AND DELIVERED**



**2. EXCAVATE AND
INSTALL SLABS**



**3. INSTALL
COMPOSTING CHAMBER**



TRAIL AMENITIES



1. ASSEMBLED OFF SITE AND DELIVERED



2. EXCAVATE GROUND



3. PLACE 6" CONCRETE SLABS



4. INSTALL COMPOSTING CHAMBER



CLIVUS C-11 ADA RESTROOM

5. INSTALL FULLY ASSEMBLED UNITS



6. GRADING AROUND RESTROOMS

TRAIL AMENITIES



1. ASSEMBLED OFF SITE AND DELIVERED



2. EXCAVATE GROUND



3. PLACE 6" CONCRETE SLABS



4. INSTALL COMPOSTING CHAMBER



CLIVUS C-11 ADA RESTROOM

5. INSTALL FULLY ASSEMBLED UNITS



6. GRADING AROUND RESTROOMS

TRAIL AMENITIES



SOLAR PANELS

VENTILATION FAN

UNISEX LABELS

**STEEL AND
LOCKABLE DOOR**

**MAINTENANCE
ACCESS LID**

**ADA
ACCESSIBLE**

CLIVUS C-11 ADA RESTROOM

SAFETY - ILLUMINATION



**DARK SKY COMPLIANT
LIGHTING HELPS
WITH BIRD MIGRATION**

SIGNS



**OVERHEAD TRAIL HEAD SIGNS
FOR MAINTENANCE VEHICLE
ACCESS**



**TRAIL SIGNS AT LOCAL
ROAD CROSSINGS**

PUBLIC INFORMATION SIGNS



THE FARMINGTON CANAL HERITAGE TRAIL



1828 - 1848



1848 - 1996



TODAY

Before you lies a small remnant of the Canal Line rail tracks. The short spur represented here was built around 1960 to provide rail access to the (then) newly built industrial distribution site about a quarter-mile to the northeast.

The Farmington Canal first opened for business along its complete length from New Haven to Northampton in 1835. Within 12 years of its completion the proprietors converted the operation into a railroad, deemed far more efficient and profitable than an inland canal as a transportation route, which mostly ran upon the tow path of the former Canal. The New Haven and Northampton Railroad 'Canal Line' soon exceeded the economic importance of the Canal itself and remained vital to the region through the mid-20th Century. Its importance declined in the post-war era and it was partially destroyed by flooding in the early 1980's, which led to its demise from increasing neglect and disuse. The tracks were mostly removed by 1987.

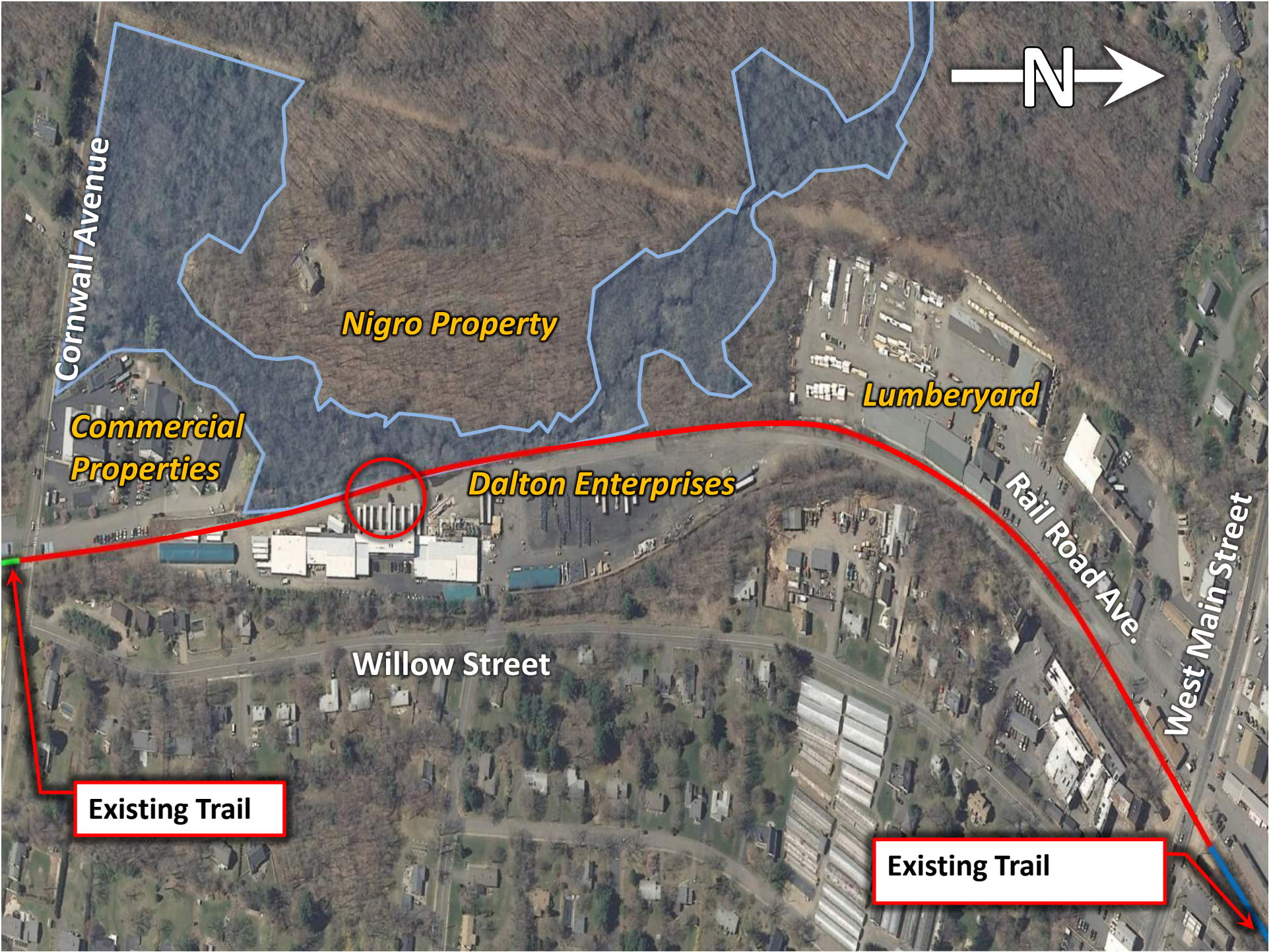
Today, this historic route has mostly been converted into a popular multi-use trail known as the Farmington Canal Heritage Trail.

RAILROAD CANAL LINE TIME TABLE



The Farmington Canal Heritage Trail is part of East Coast Greenway, stretches from New Haven to the Massachusetts border before continuing into Massachusetts for a total length of 80.5 miles and 11 towns. Along the way are historic buildings, canal locks, the remains of canal aqueducts and other landmarks that provide a rich cultural background for the trail experience.





Cornwall Avenue

Nigro Property

Commercial Properties

Lumberyard

Dalton Enterprises

Rail Road Ave.

West Main Street

Willow Street

Existing Trail

Existing Trail

Alignment Option

- Willow Street



Alignment Option

- Willow Street



Cornwall Avenue

Willow Street

West Main Street



Alignment Option

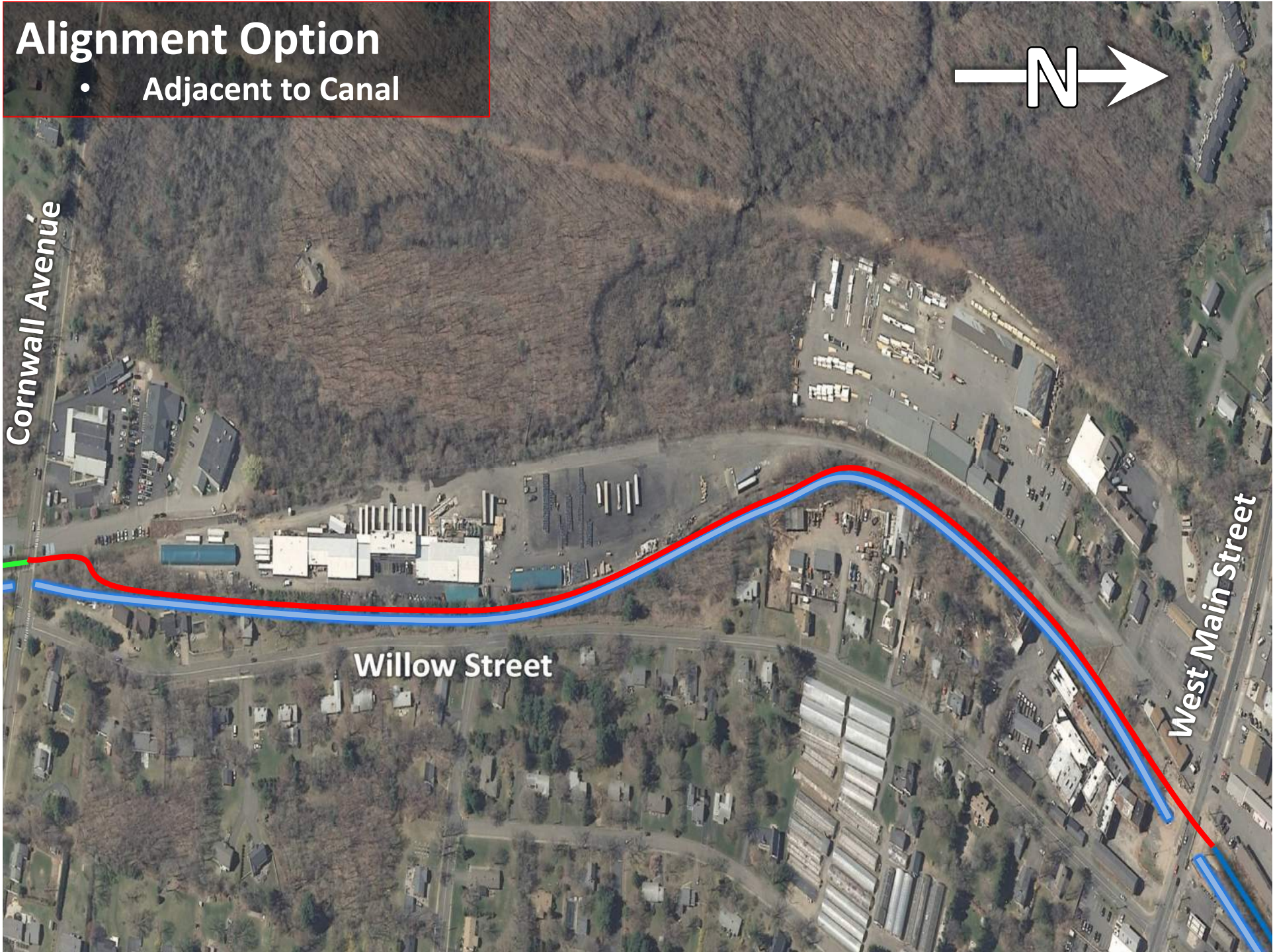
- Adjacent to Canal



Cornwall Avenue

Willow Street

West Main Street





Alignment Option

- Gas Utility Easement

Cornwall Avenue

Willow Street

West Main Street



Alignment Option

- Adjacent to Canal



Cornwall Avenue

G

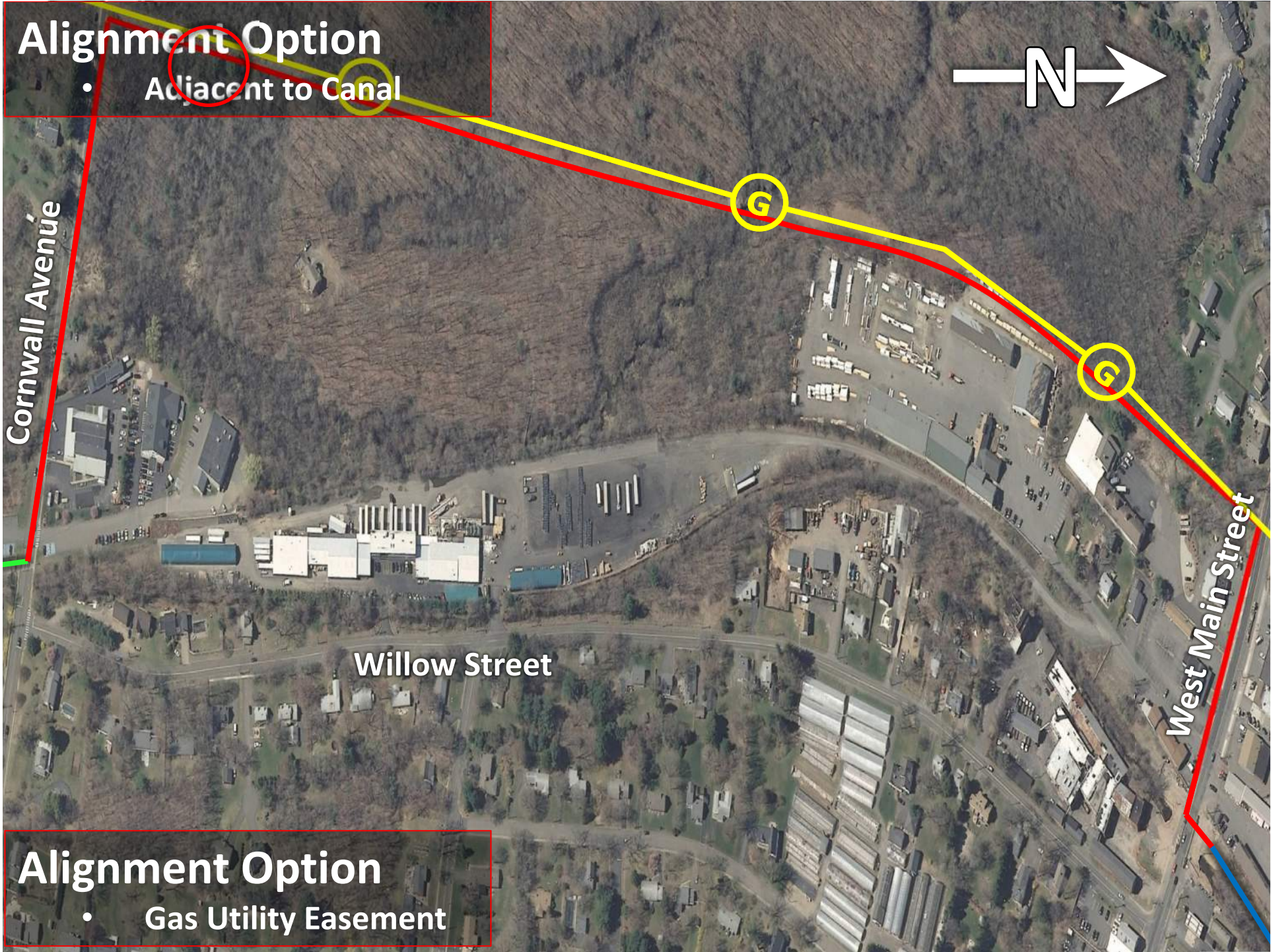
G

Willow Street

West Main Street

Alignment Option

- Gas Utility Easement





Rail Road Avenue

West Main Street



Rail Road Avenue

West Main Street



Cornwall Avenue



Willow Street

West Main Street

Alignment Option

- Option 2



ARTHUR D. MONTGOMERY
510 CUMMINGS AVE.
2337-169

C/C/B
HT=147.71
FL=144.41(N)
FL=144.21(W)
BT=142.61

C/C/B
HT=147.71
FL=144.41(N)
FL=144.21(W)
BT=142.61

SNET
+6029

SNET+47

WOOD GUIDE RAIL

SUBJECT TO A 16.5'
EASEMENT IN FAVOR
OF AT&T



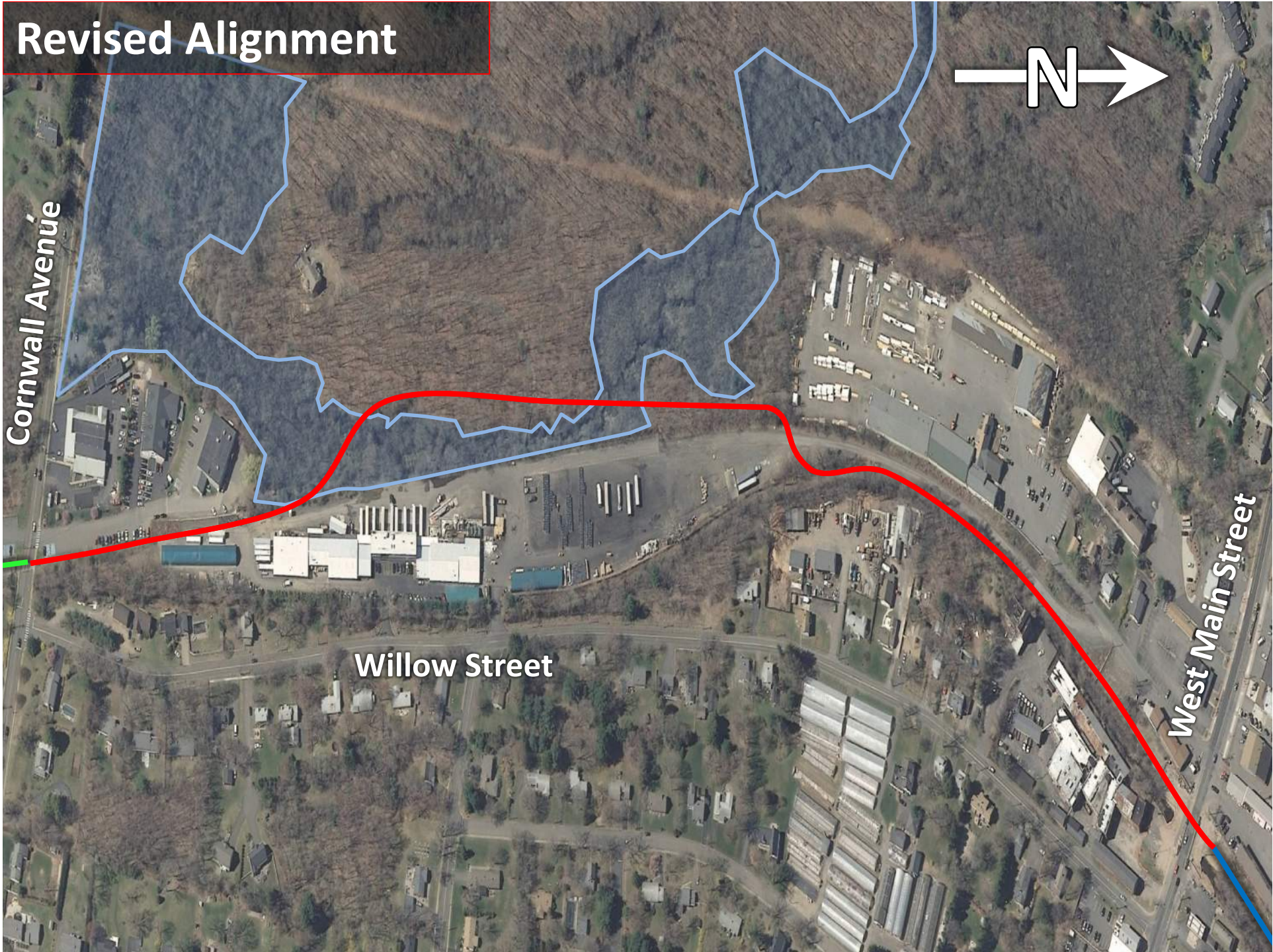
Revised Alignment



Cornwall Avenue

Willow Street

West Main Street

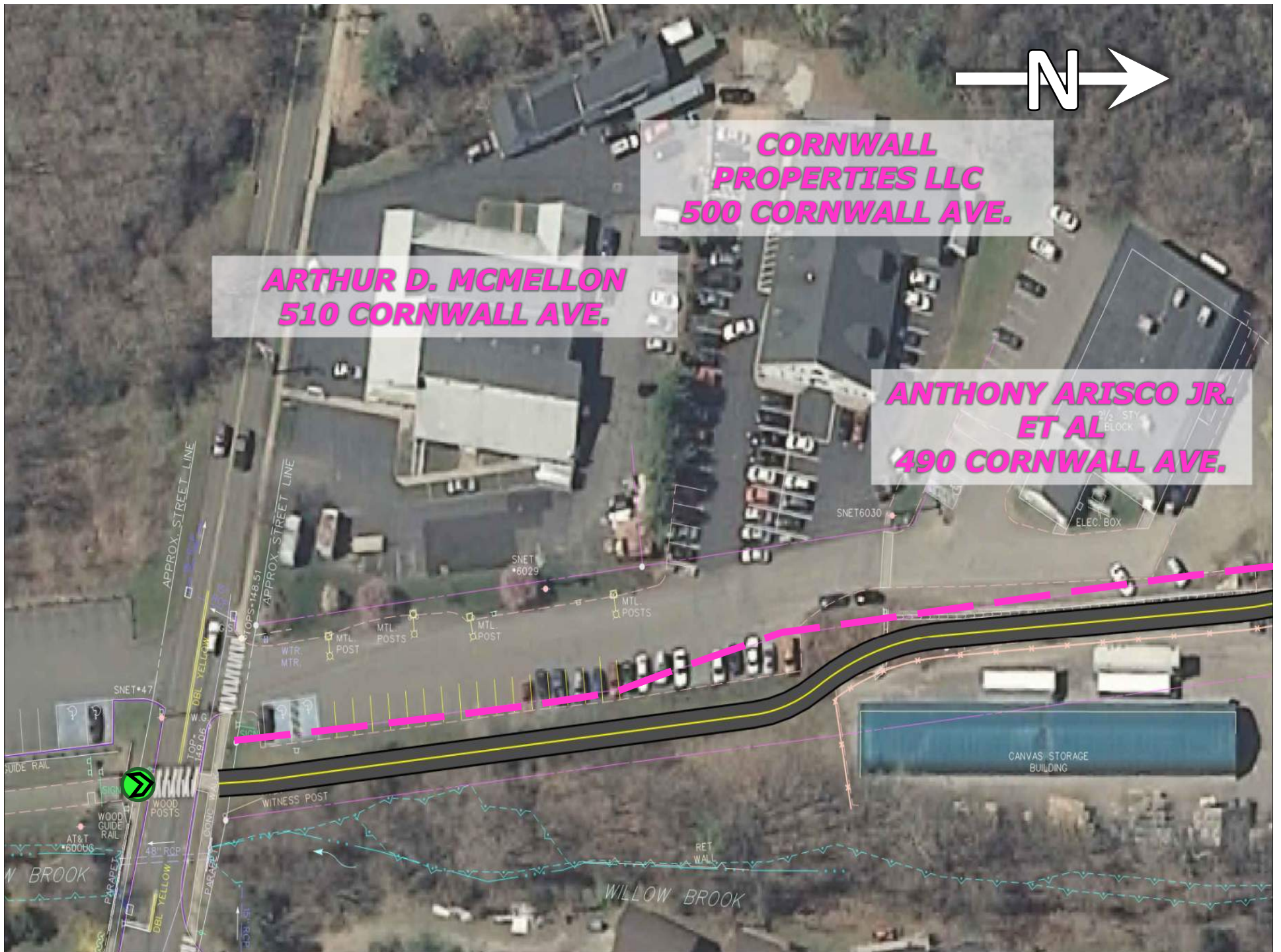


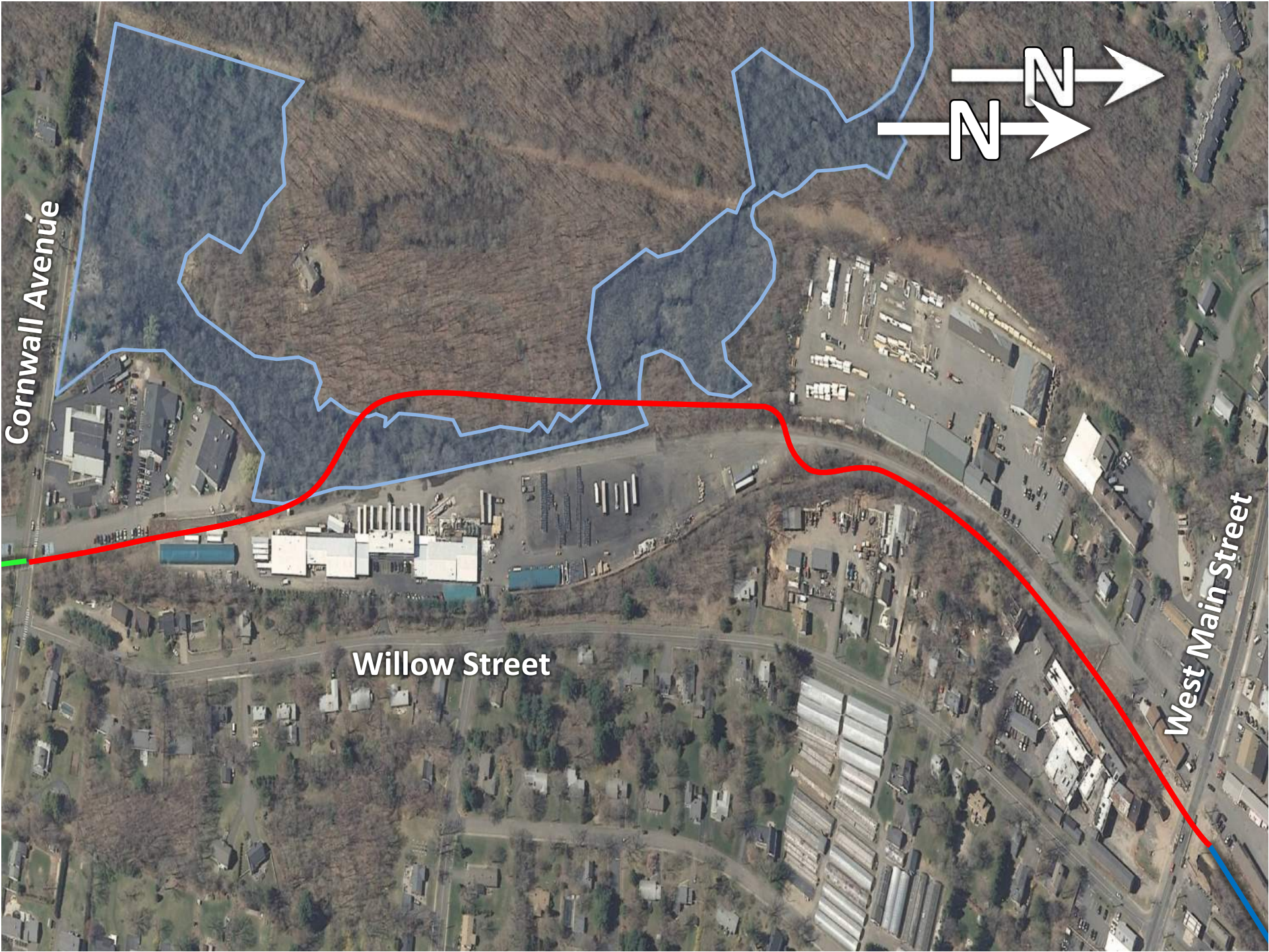


**CORNWALL
PROPERTIES LLC
500 CORNWALL AVE.**

**ARTHUR D. MCMELLON
510 CORNWALL AVE.**

**ANTHONY ARISCO JR.
ET AL
490 CORNWALL AVE.**





Cornwall Avenue

Willow Street

West Main Street

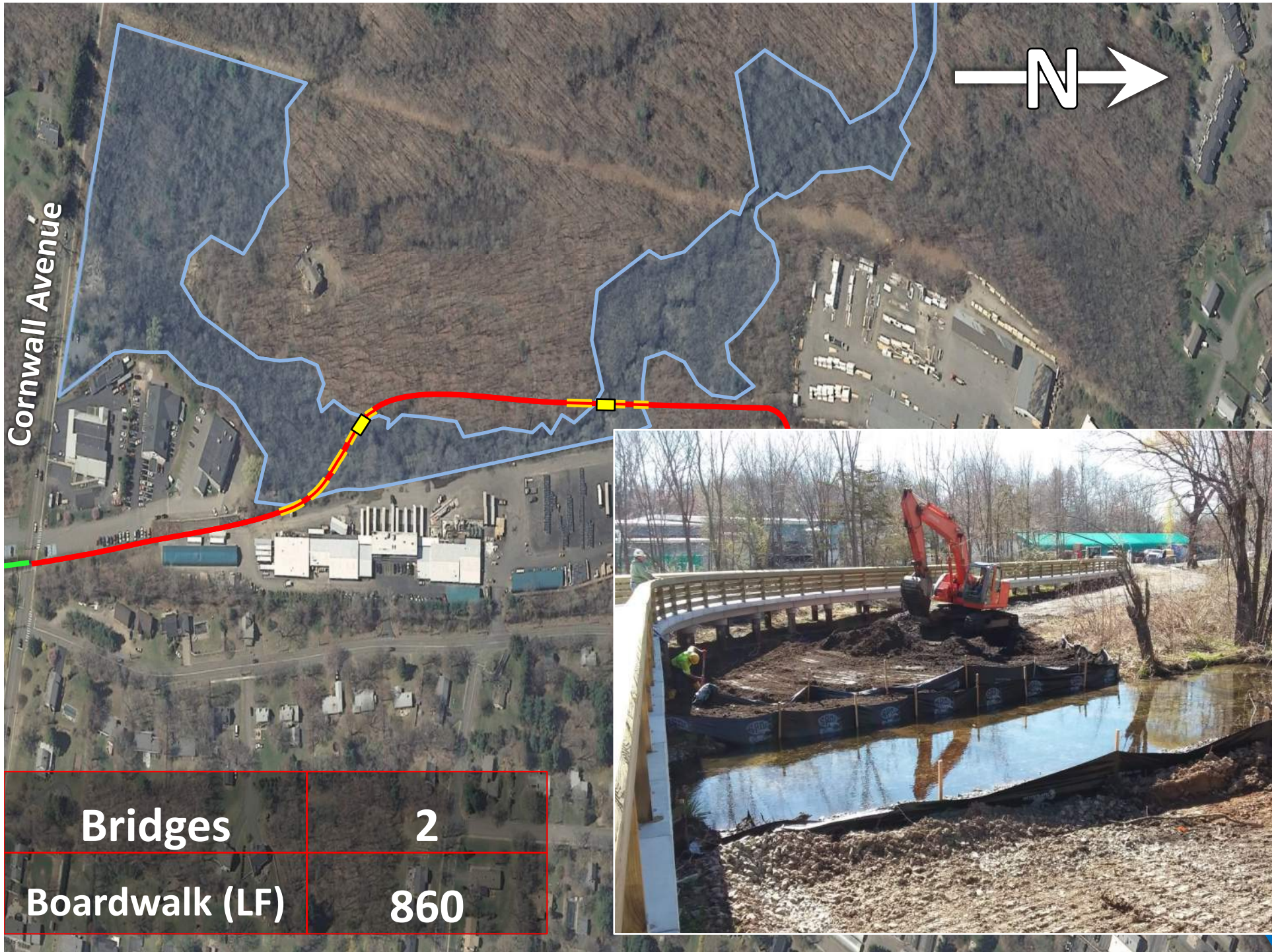


WILLOW BROOK

Wetlands Area

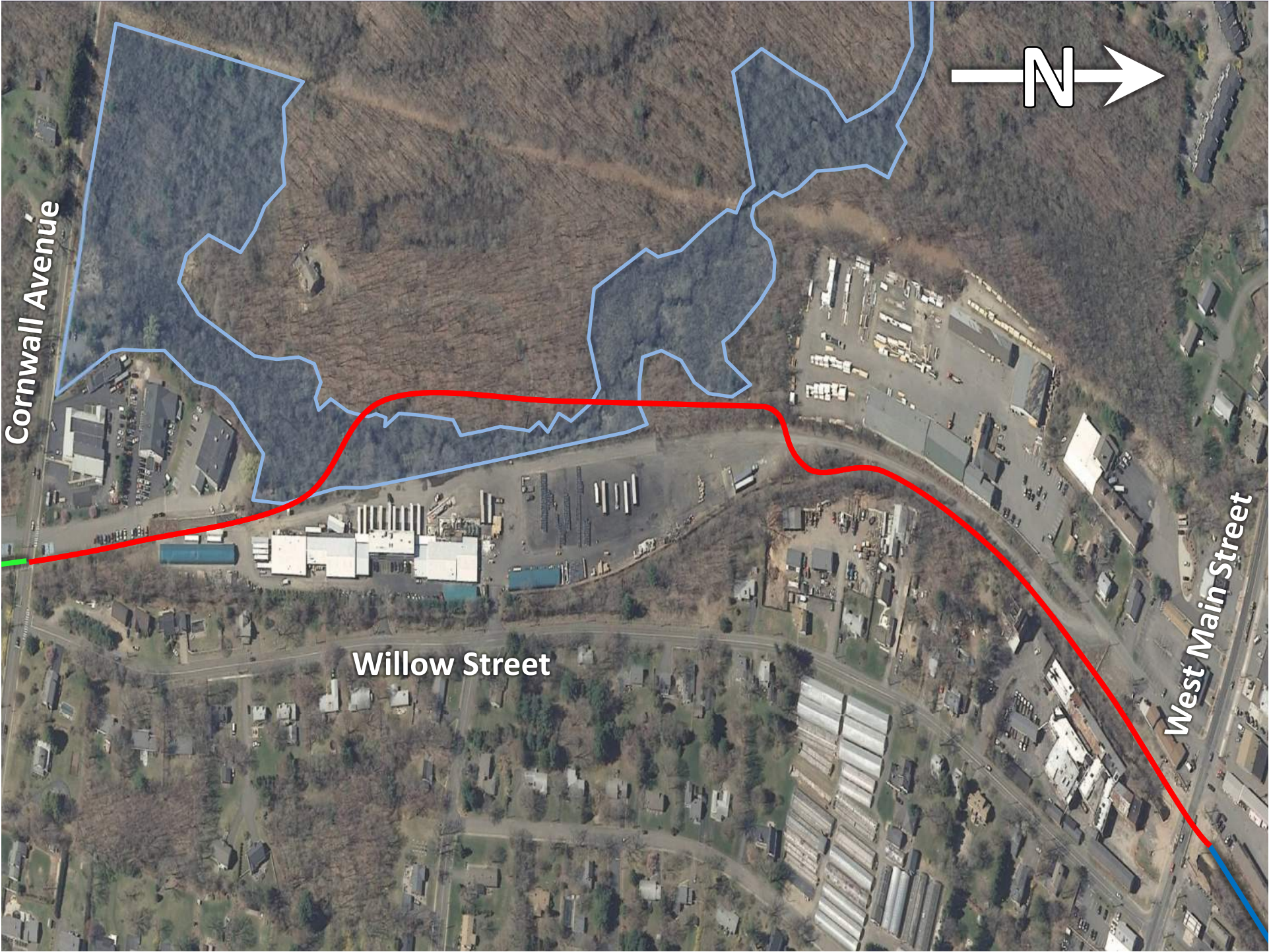


Precast Concrete Pier and Boardwalk System



Bridges	2
Boardwalk (LF)	860



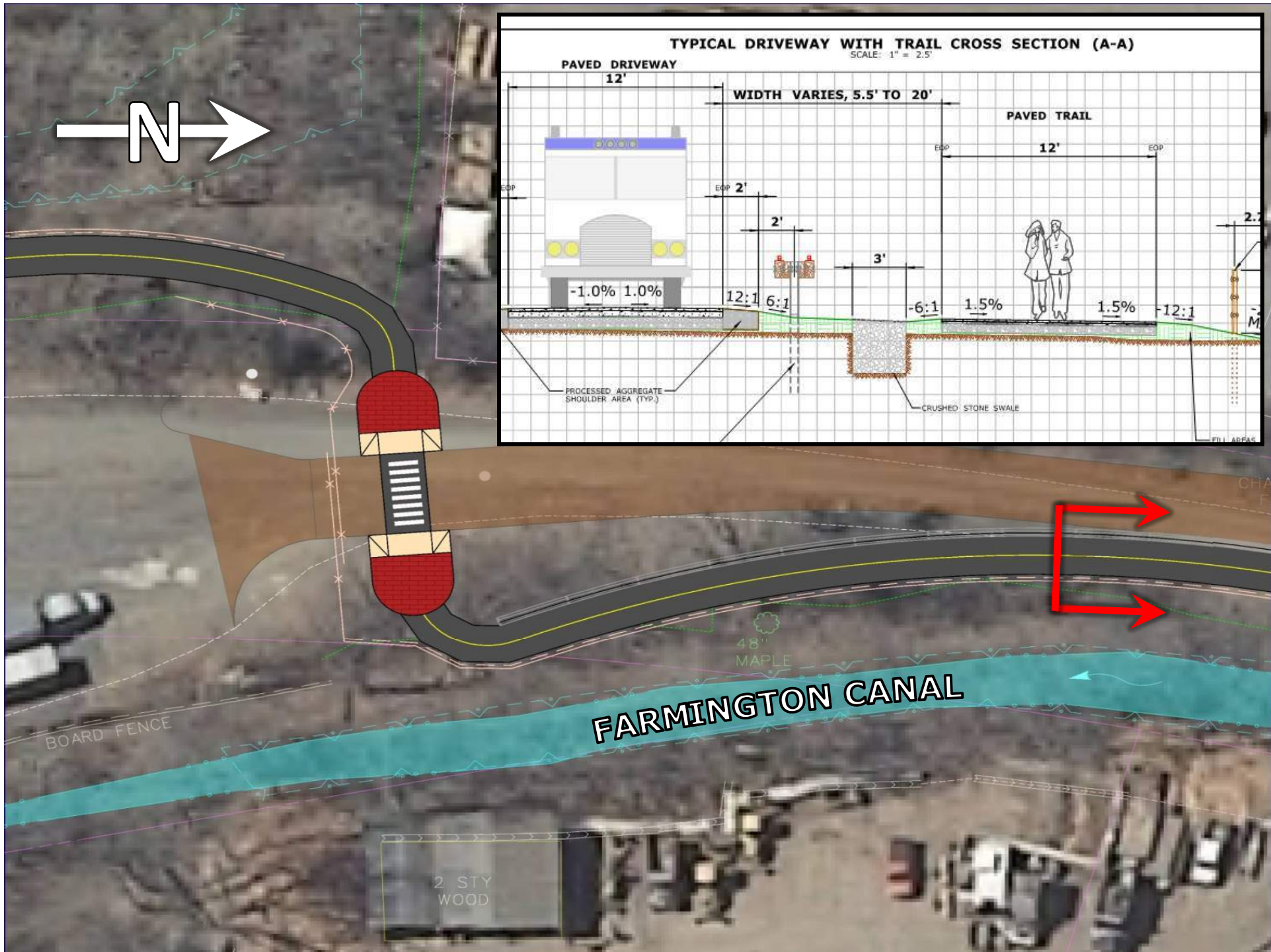


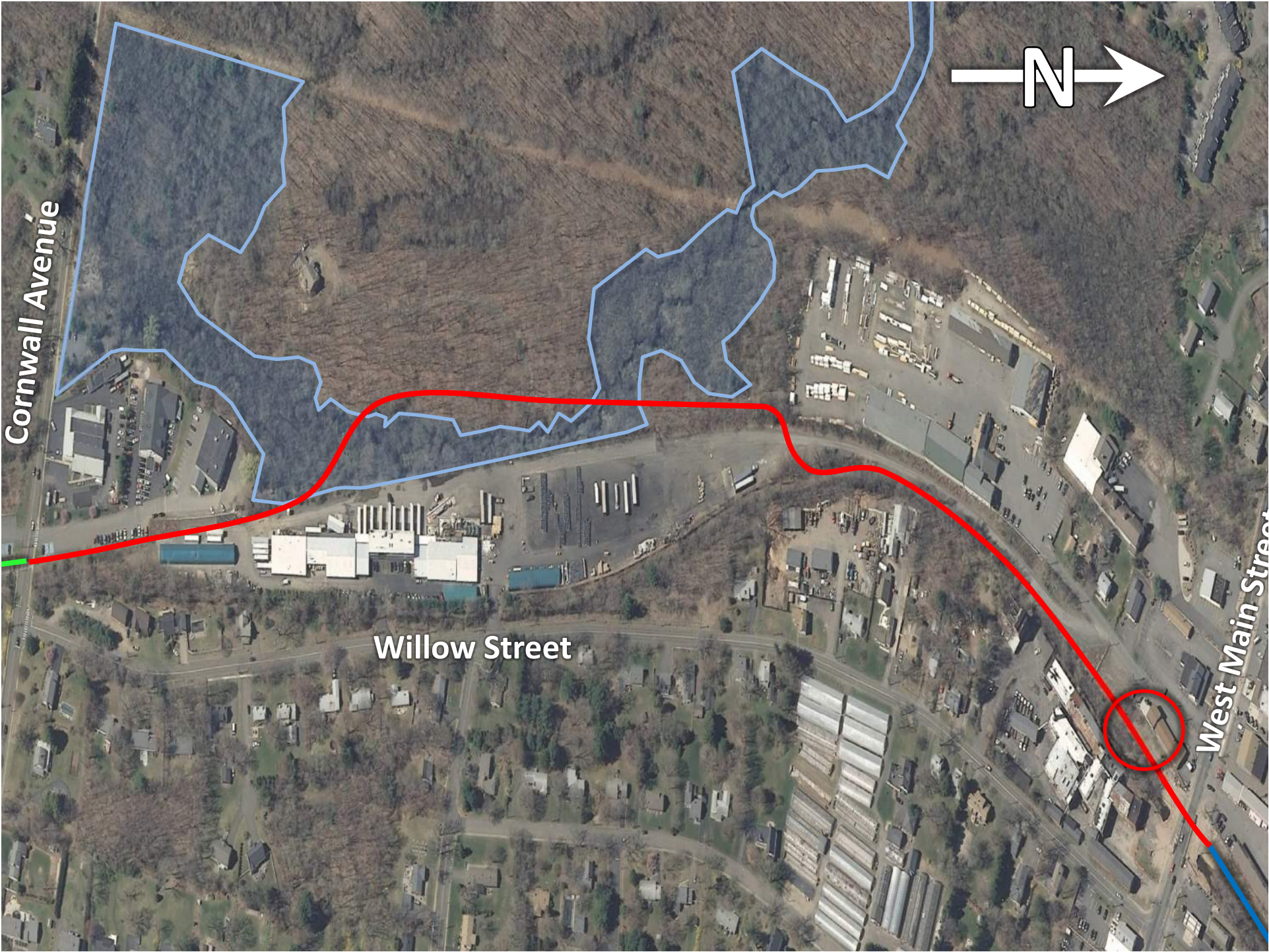
Cornwall Avenue



Willow Street

West Main Street



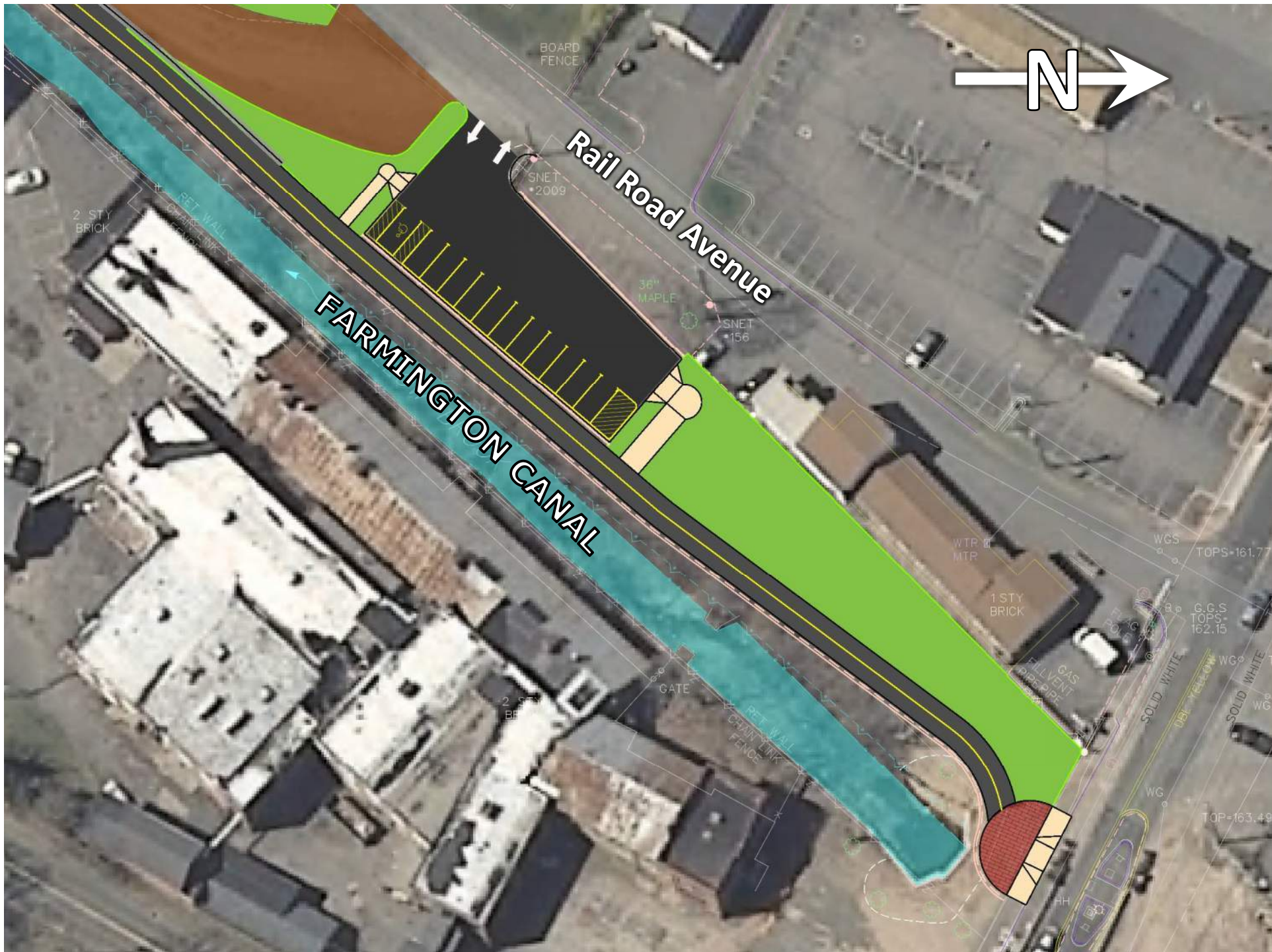


Cornwall Avenue

Willow Street

West Main Street





Rail Road Avenue

FARMINGTON CANAL

BOARD FENCE

2 STY BRICK

SNET #2009

36" MAPLE

SNET #156

RET WALL

GATE

RET WALL

CHAIN LINK FENCE

WTP # MTP

1 STY BRICK

GAS FILL VENT PIPE

SOLID WHITE

WG

TOPS+161.77

G.C.S TOPS+162.15

WG

TOP+163.49

HH

CONCRETE BOARDWALK – SOIL BORINGS



SOILS TYPE
0 – 5 FT **TOPSOIL**
5 – 20 FT **GRAVELY SAND**
20 – 40 FT **GLACIAL TILL**

BOARDWALK CONSTRUCTION – TREE REMOVAL



CONCRETE BOARDWALK – ACCESS ROADS



ACCESS ROAD



CONCRETE BOARDWALK – PILE DRIVING



152 PILES
DEPTH OF PILES 20 – 40 FT

CONCRETE BOARDWALK – INSTALLATION



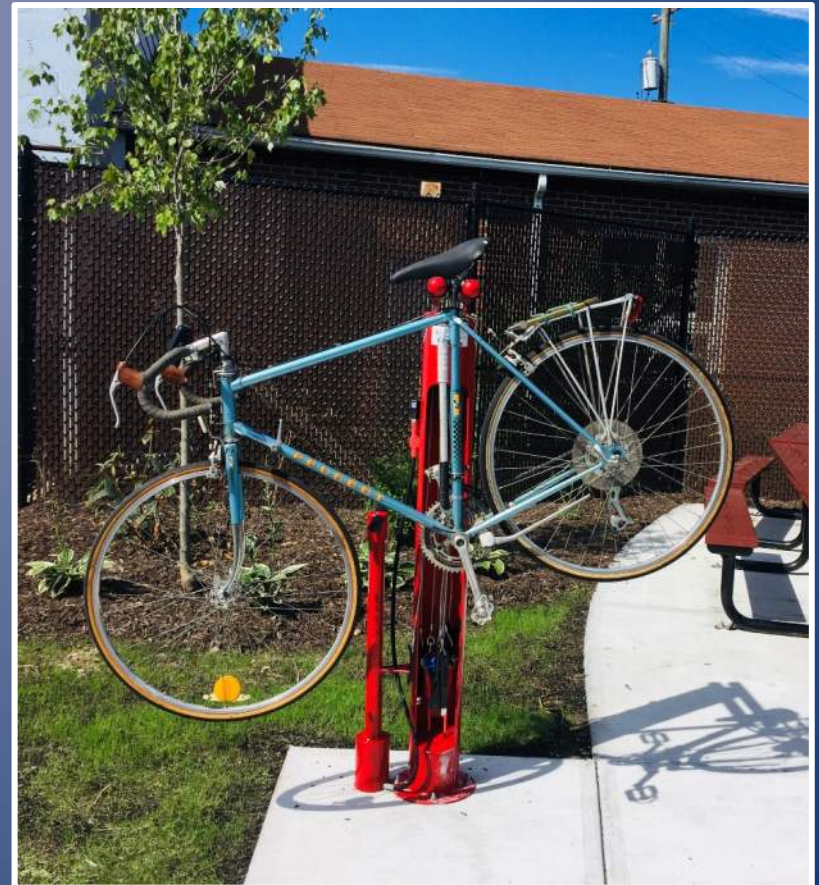
CONCRETE BOARDWALK



CONCRETE BOARDWALK



PARKING LOT



KIOSKS



PRECAST RESTROOM BUILDING

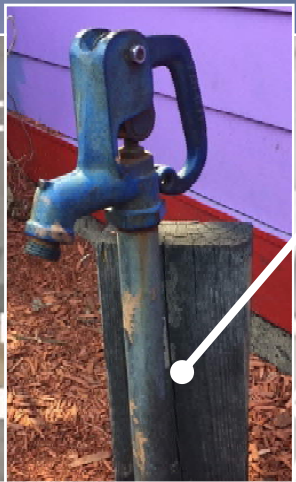


Lights

Water Fountain / Bottle Filler

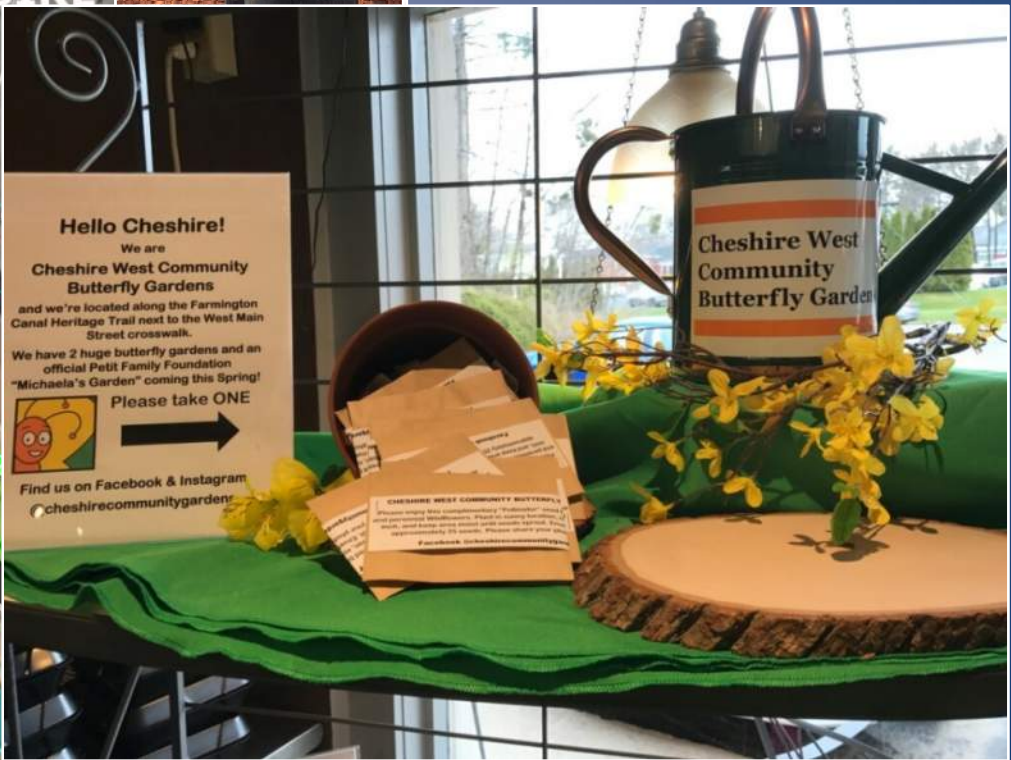
Flush Mounted Water Faucet

RAIN GARDENS / BUTTERFLY GARDENS



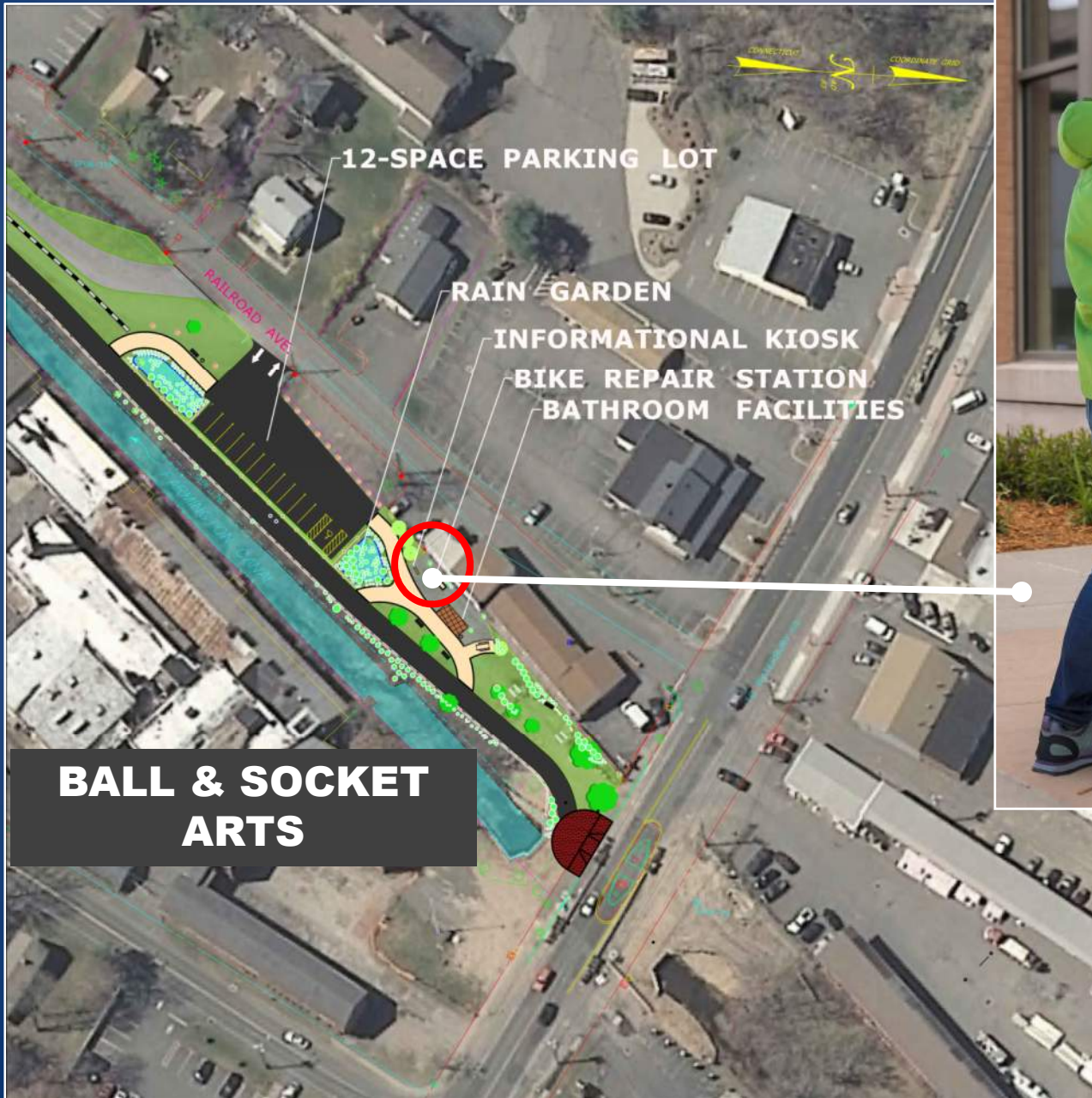
**ABOVE GROUND
LOCKABLE
WATER OUTLET**

RAIN GARDENS



Hello Cheshire!
We are
**Cheshire West Community
Butterfly Gardens**
and we're located along the Farmington
Canal Heritage Trail next to the West Main
Street crosswalk.
We have 2 huge butterfly gardens and an
official Petit Family Foundation
"Michaela's Garden" coming this Spring!
Please take ONE
Find us on Facebook & Instagram
@cheshirecommunitygardens





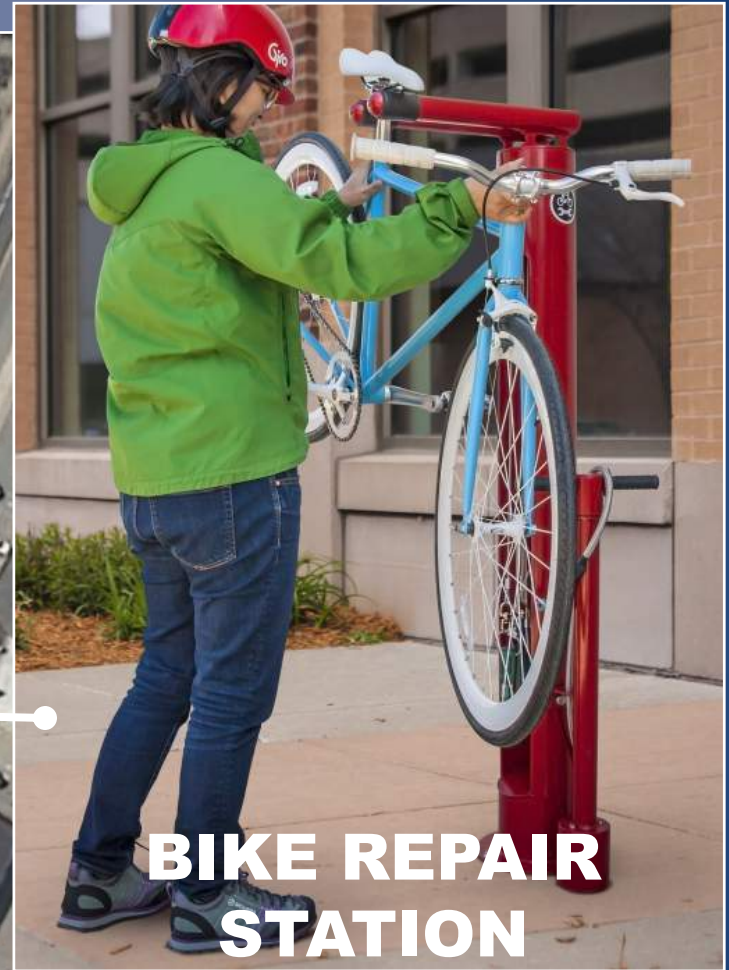
12-SPACE PARKING LOT

RAIN GARDEN

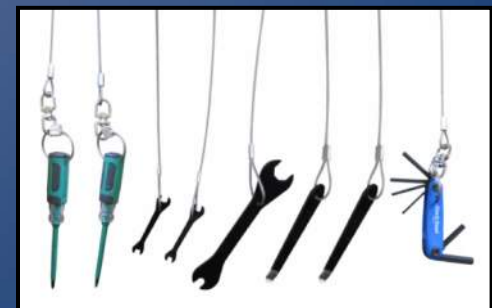
INFORMATIONAL KIOSK

BIKE REPAIR STATION
BATHROOM FACILITIES

**BALL & SOCKET
ARTS**



**BIKE REPAIR
STATION**



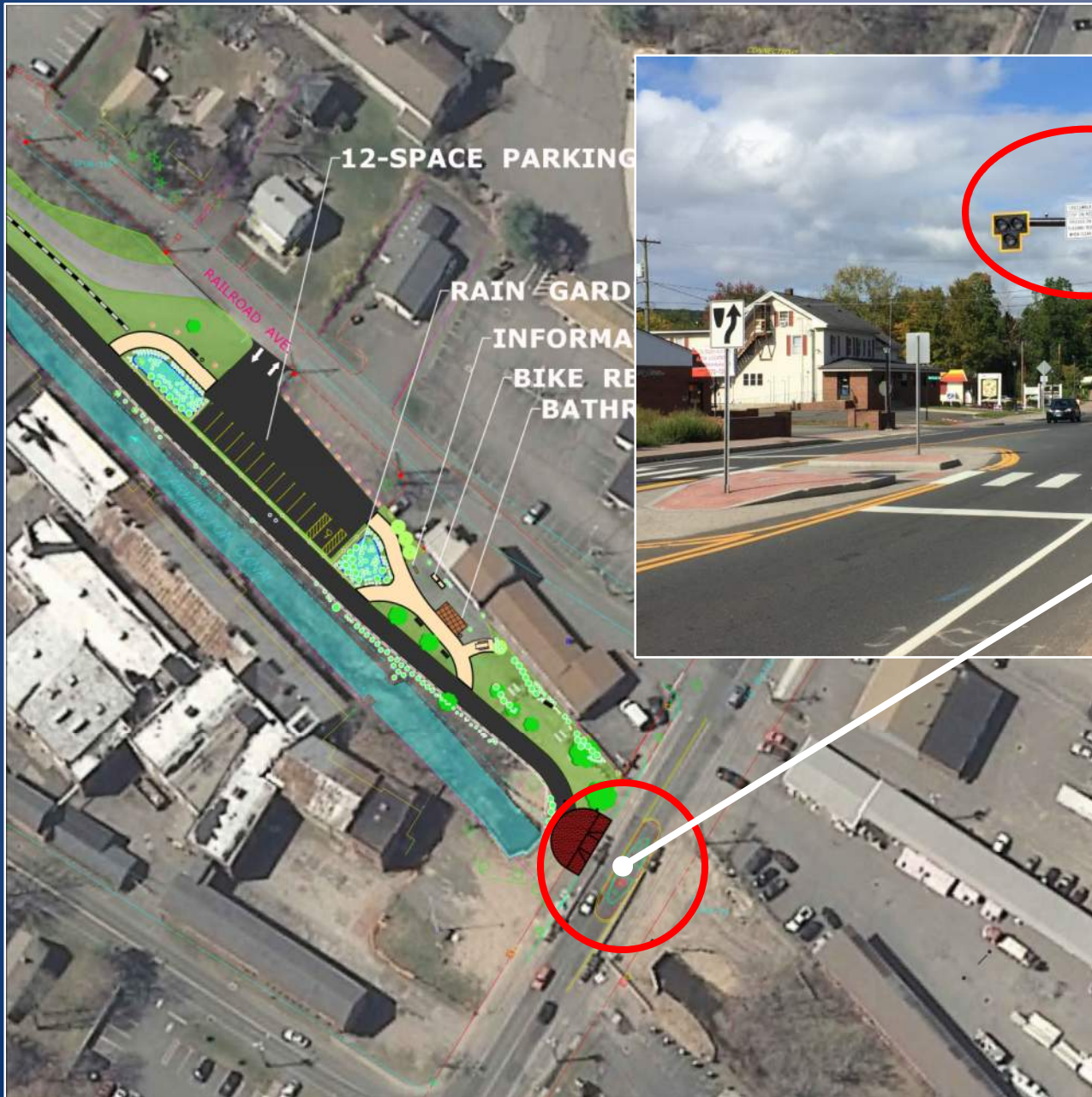
RAIN/ BUTTERFLY GARDEN

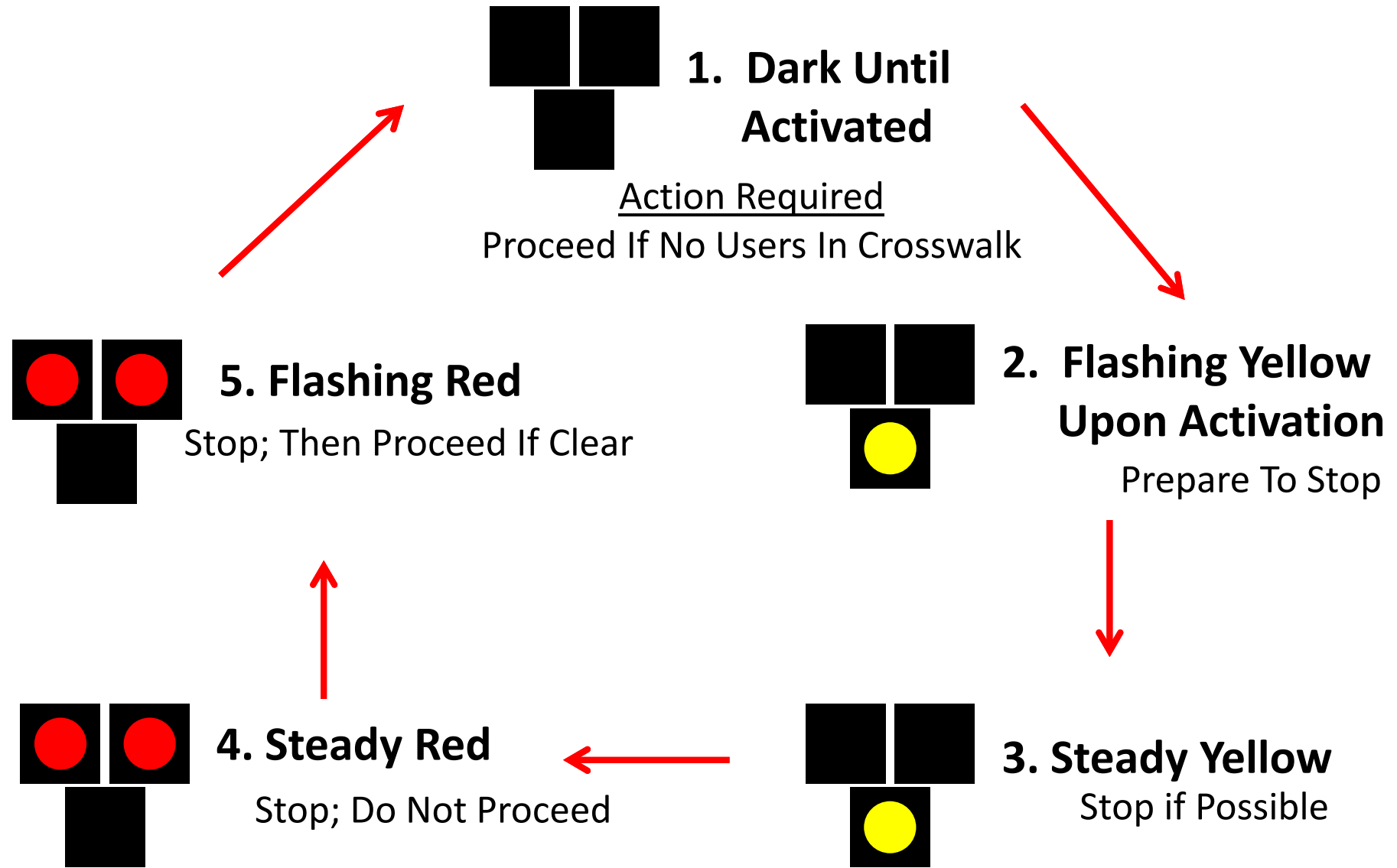


MICHAELA'S GARDEN

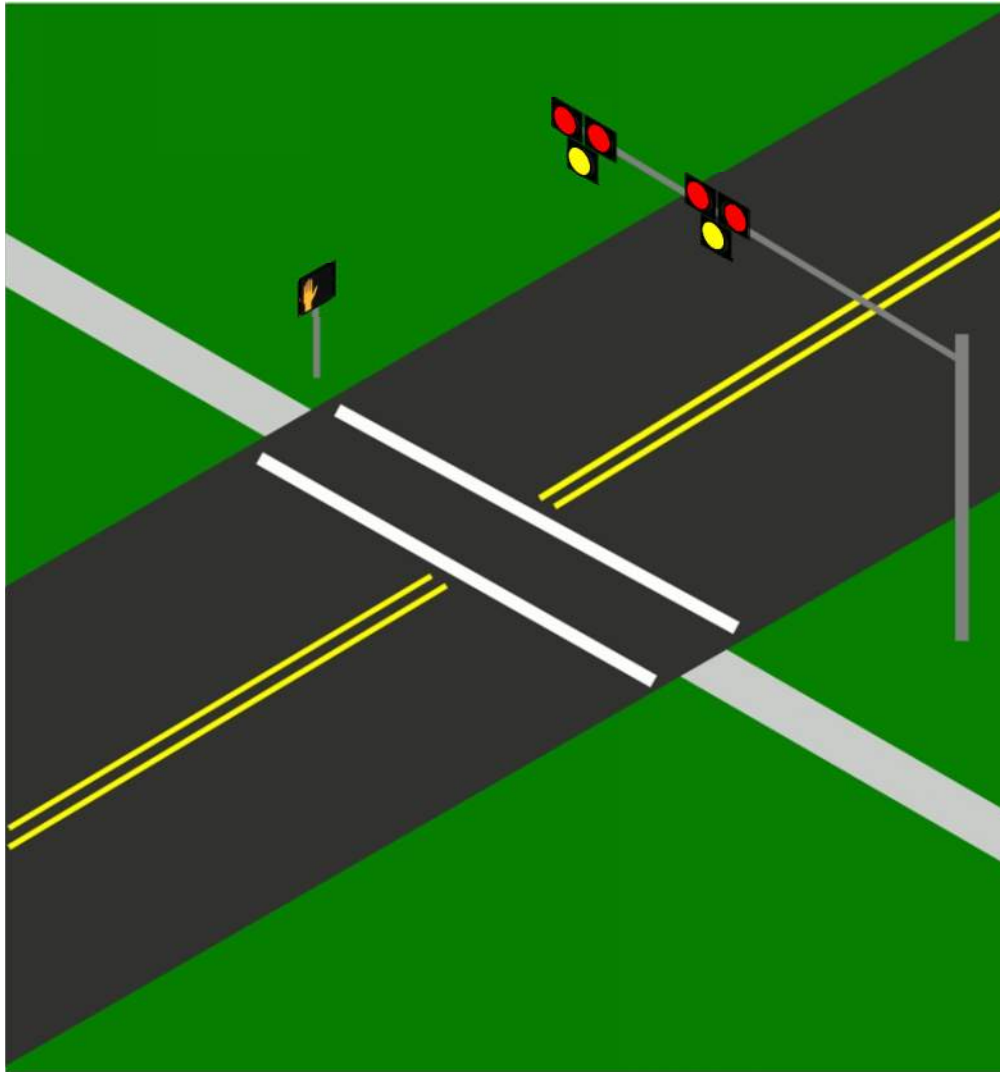


HIGH-INTENSITY ACTIVATED CROSSWALK (HAWK) SIGNAL





Pedestrian Hybrid Beacon
“HAWK Signal”



Pedestrian Hybrid Beacon
“HAWK Signal”

HIGH-INTENSITY ACTIVATED CROSSWALK (HAWK) SIGNAL



GROUND BREAKING CEREMONY



PETIT family
FOUNDATION



Cheshire West
Community
Butterfly Garden



PARTNERING



QUESTIONS / COMMENTS

