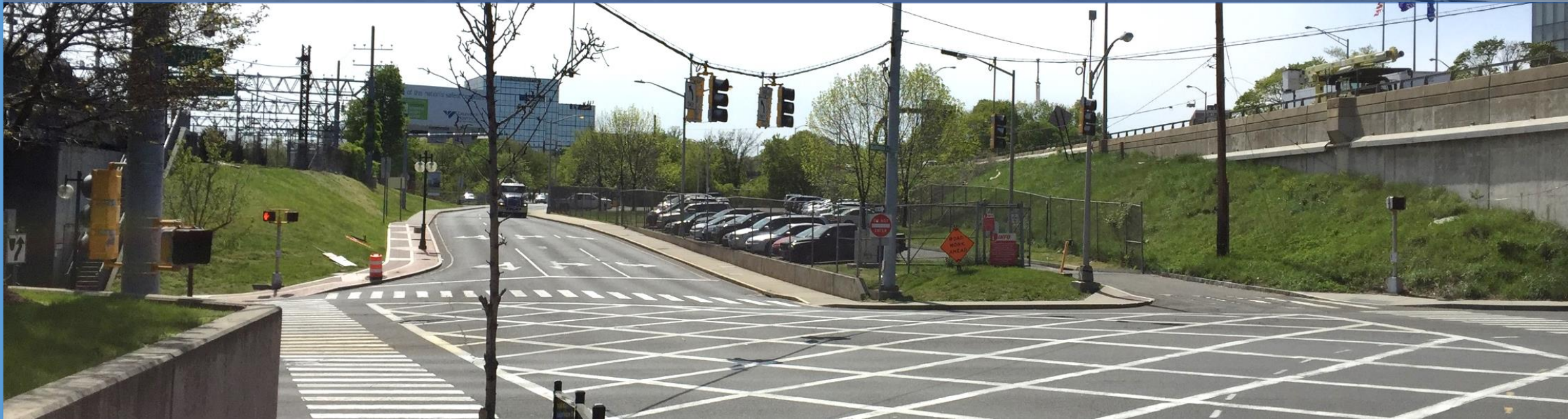




# STAMFORD STATION PARKING GARAGE

## Project Information



STATE PROJECT NO. 0301-0047  
March 26, 2019

## Proposed Improvements

**A** New Parking Garage

**B** Pedestrian Bridge

*\*Project does not include transit oriented development (TOD) or private investment.*

## Proposed Garage Site

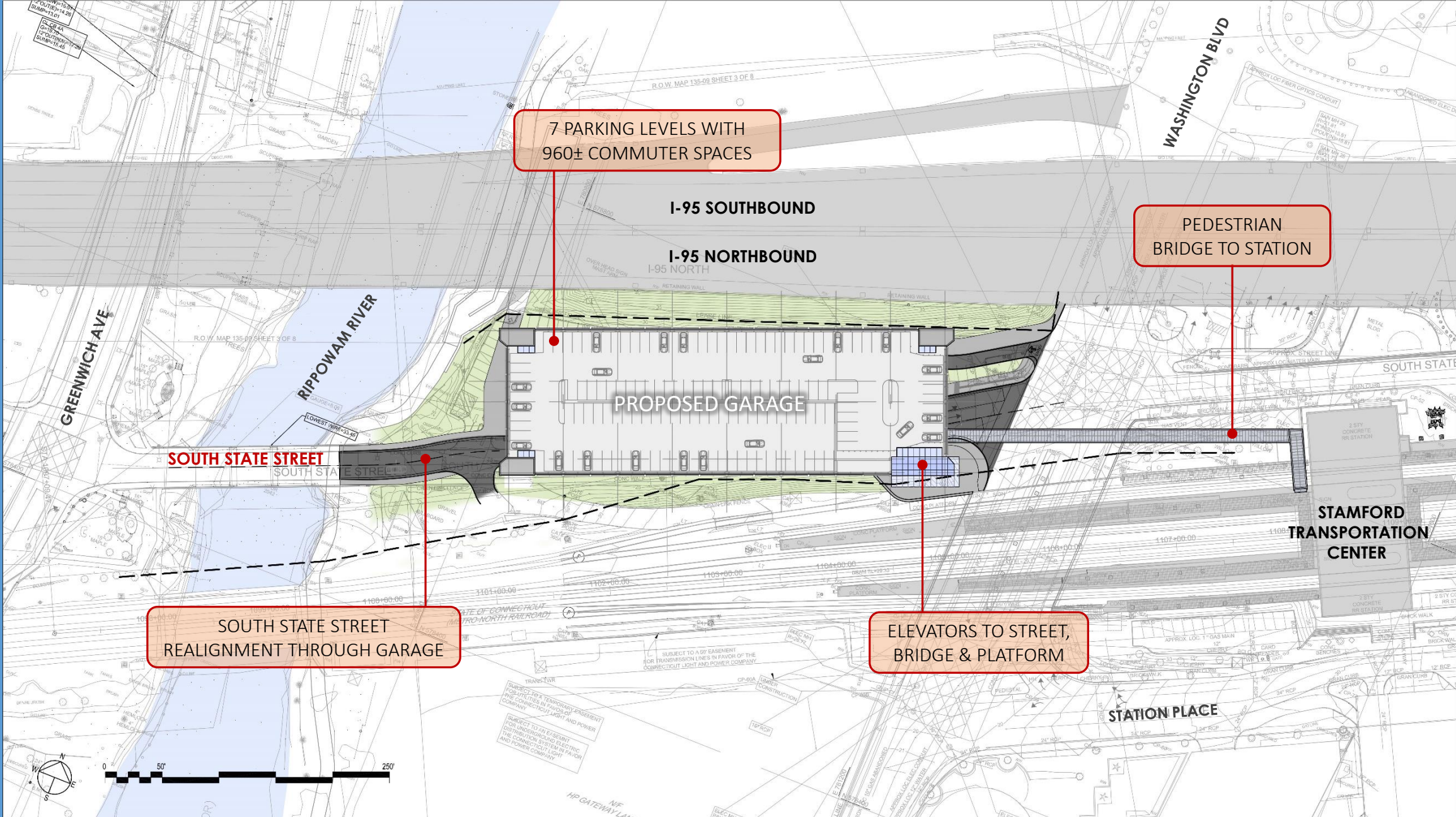
- Existing commuter parking lot on South State Street
- State of Connecticut property
- Located proximate to Station

## Future Projects

- Original Garage Demolition
- Other potential station-area improvements

Map Source: Google





7 PARKING LEVELS WITH  
960± COMMUTER SPACES

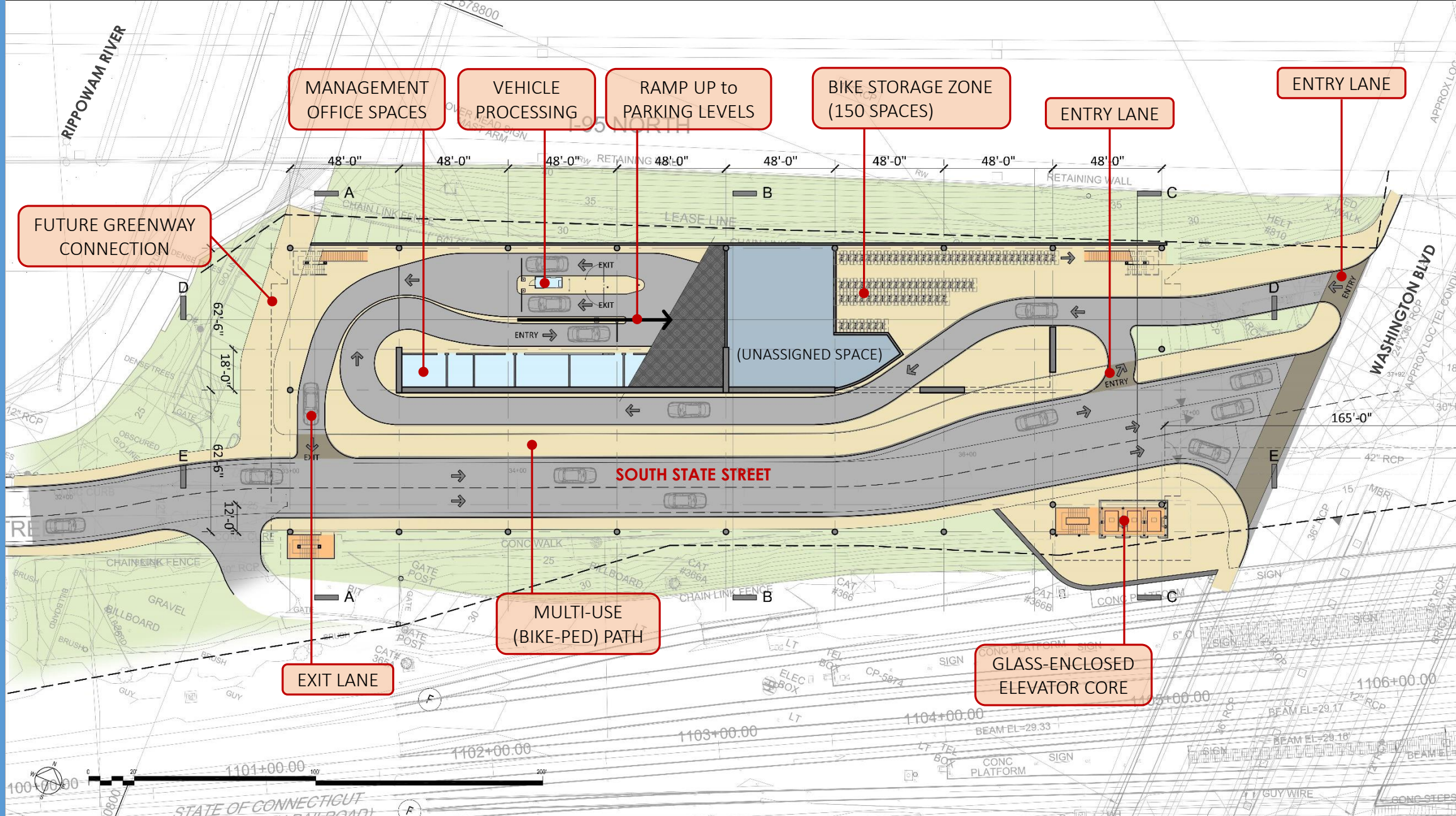
PEDESTRIAN  
BRIDGE TO STATION

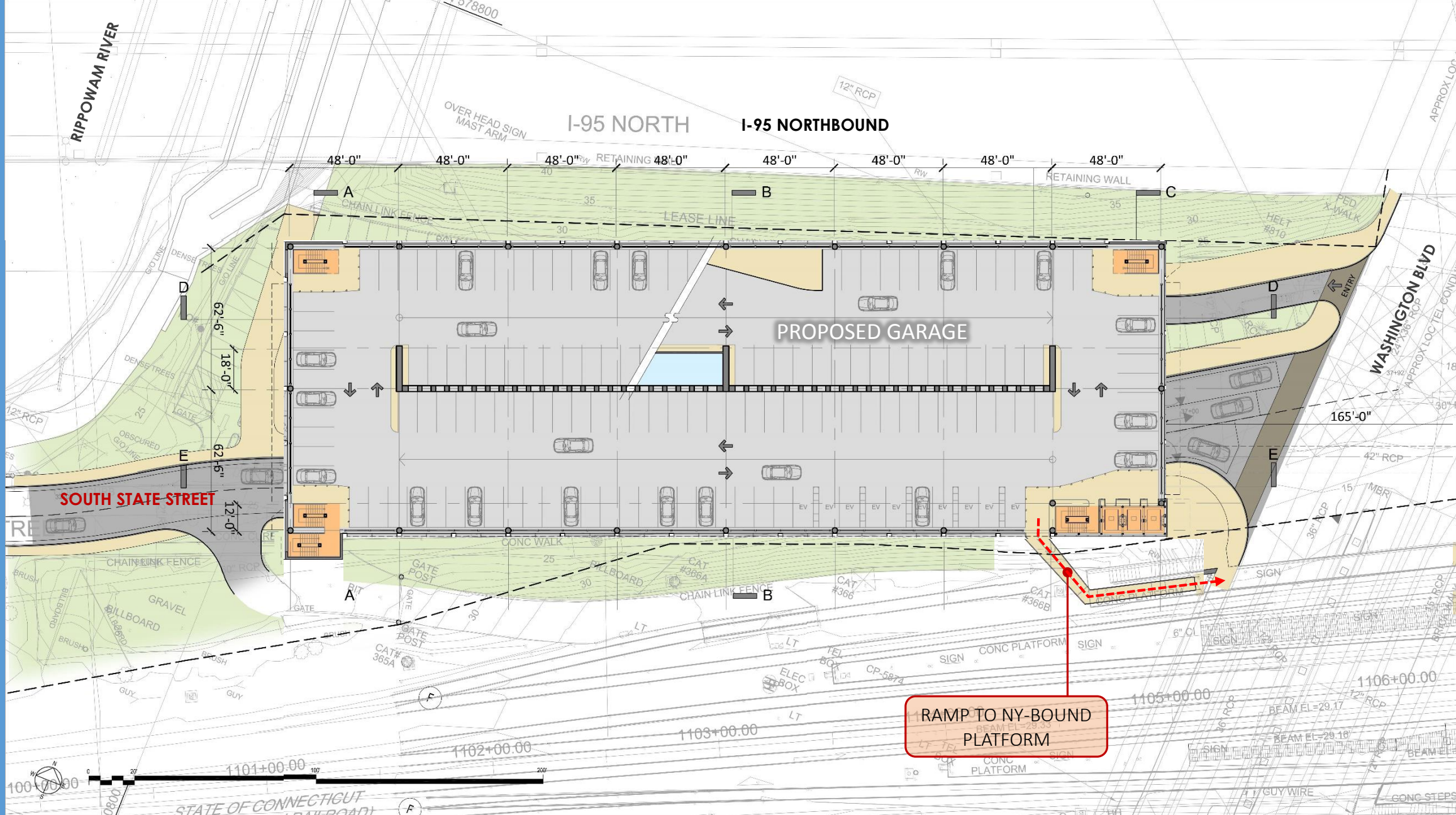
SOUTH STATE STREET  
REALIGNMENT THROUGH GARAGE

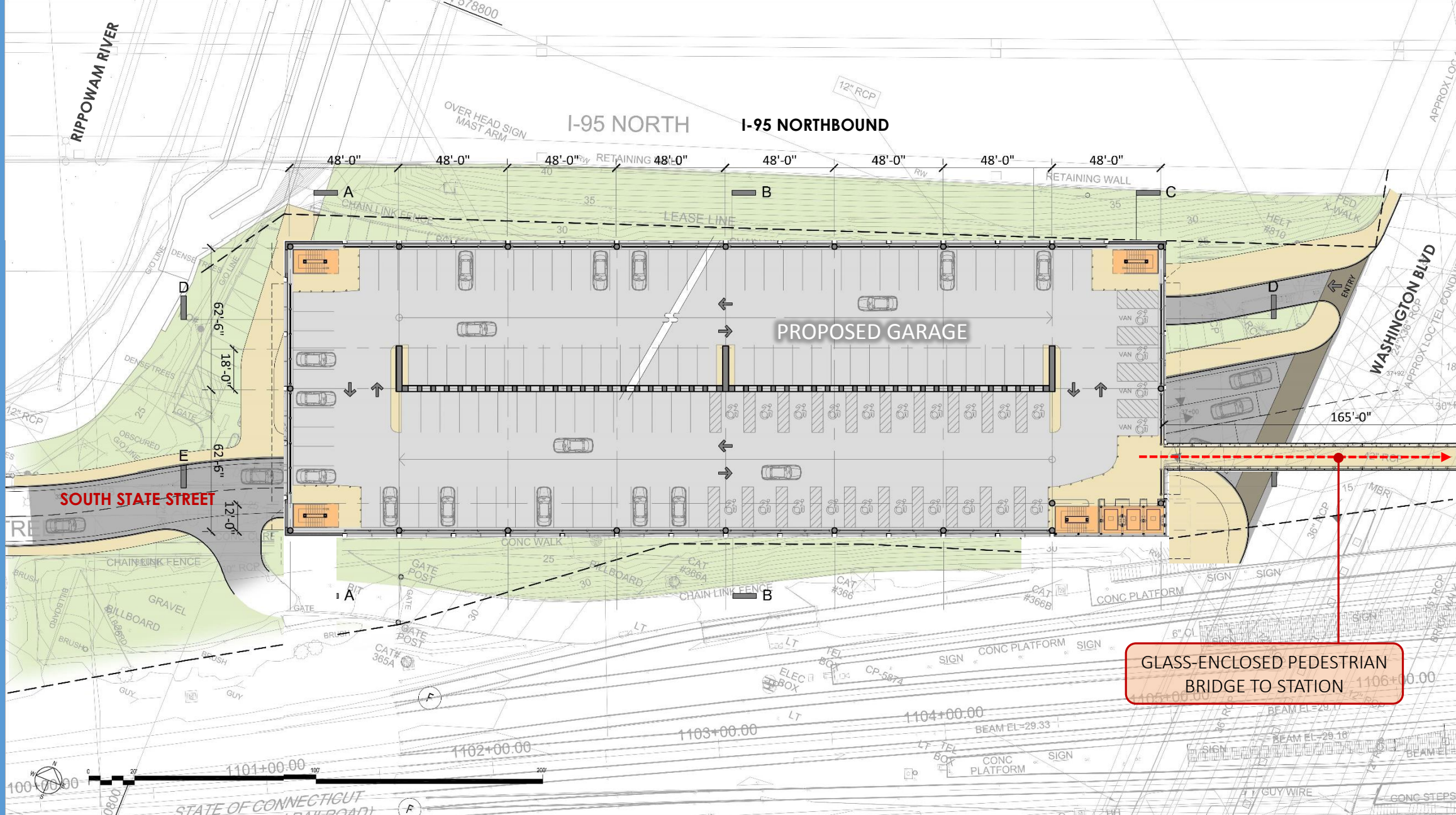
ELEVATORS TO STREET,  
BRIDGE & PLATFORM



# Proposed Garage Program

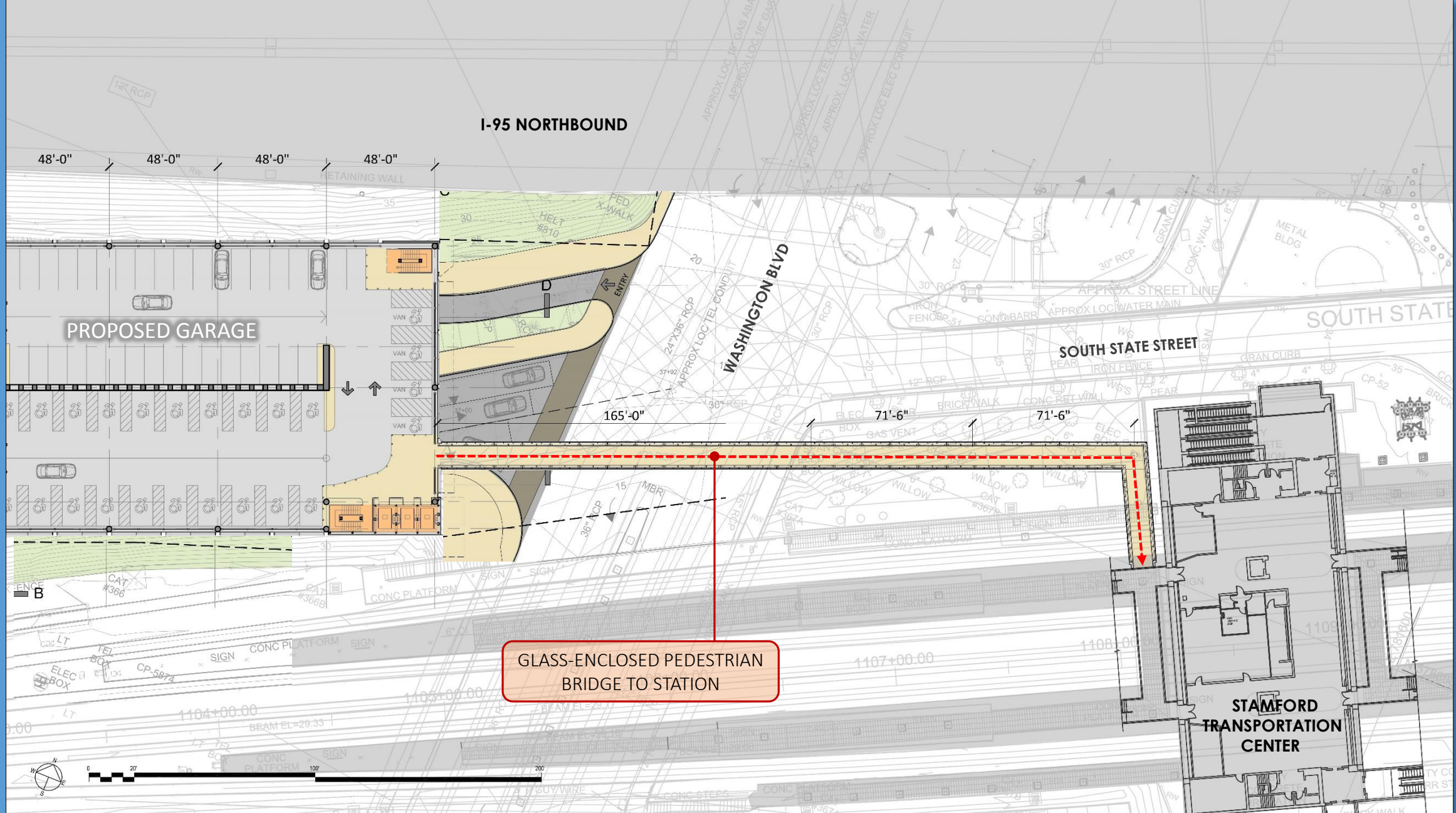






**GLASS-ENCLOSED PEDESTRIAN  
BRIDGE TO STATION**







Architecture – View from I-95 Southbound





Architecture – View from I-95 Southbound



Architecture – View from I-95 Northbound



Architecture – West Elevation



Architecture – View from Washington Blvd



Architecture – View from Station Place



Architecture – Night View