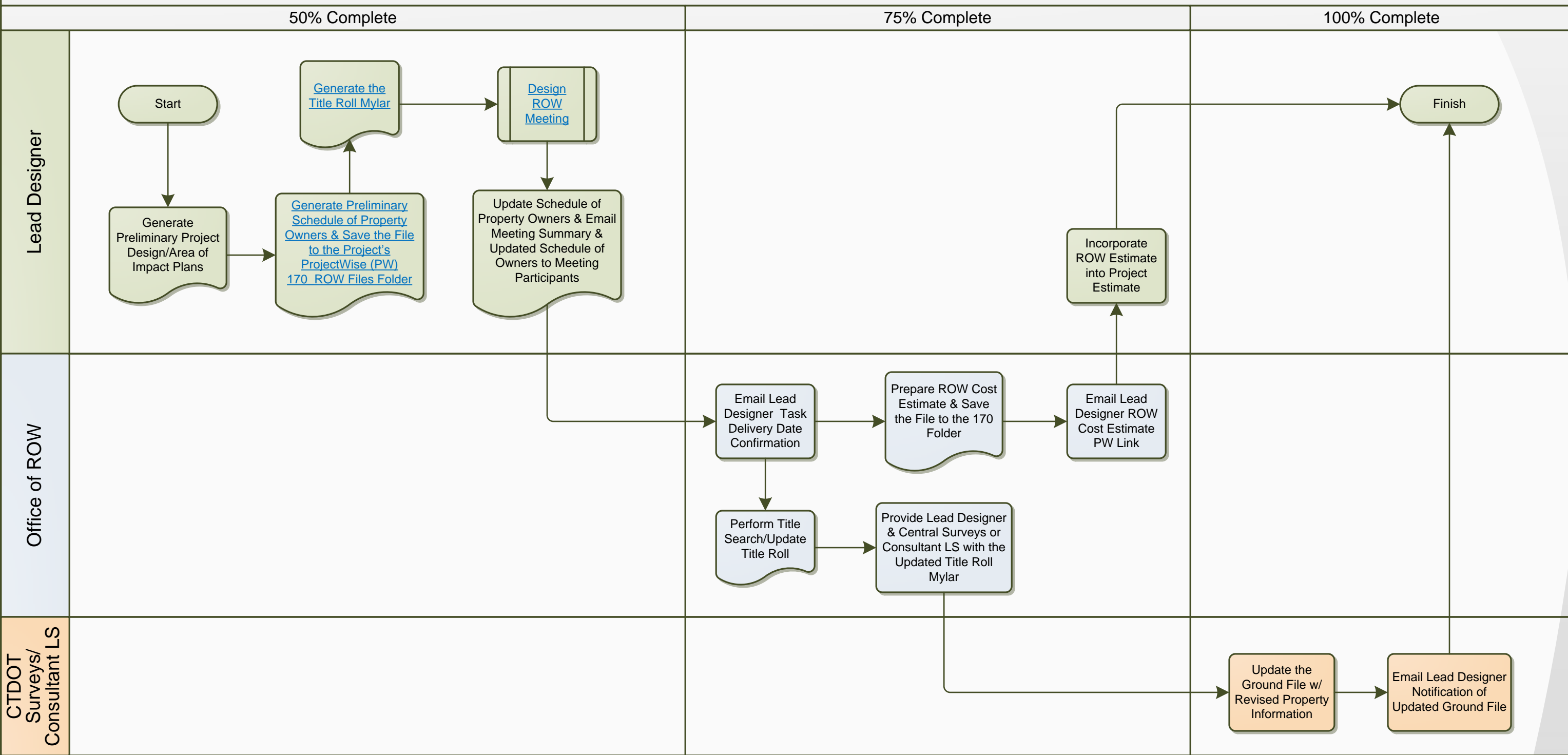


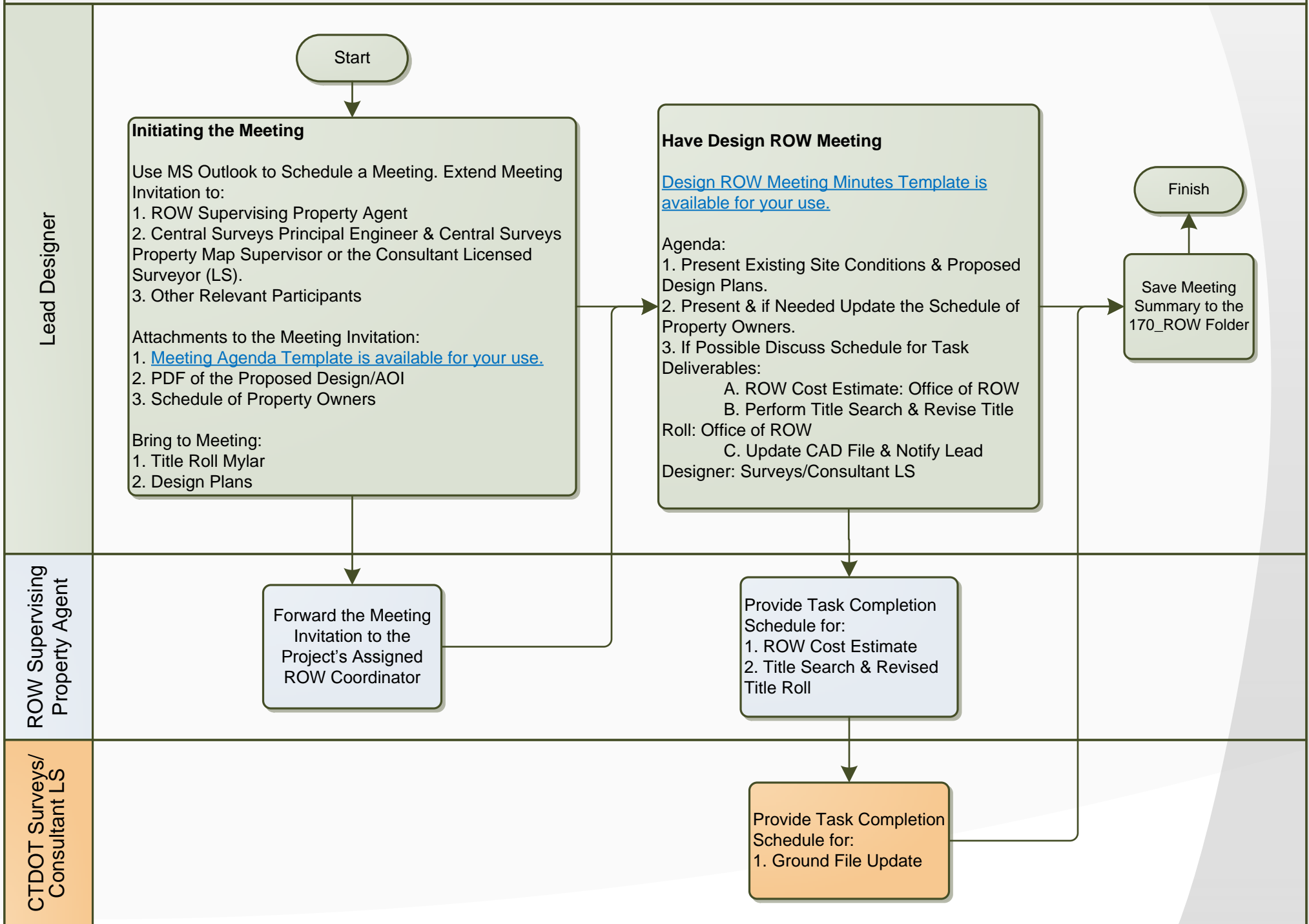
Preliminary Right-of-Way (ROW) Tasks - Process Map

[Who Contributed to this Process Map](#)
[How to Read a Process Map](#)
[Initiate Correspondence to Fix/Update the Process Map](#)



Problem: Additional ROW is required to deliver a project.
Solution: Coordinate with the Office of ROW to facilitate the procurement of land.
Deliverables: Preliminary Project Design/Area of Impact Plans, Schedule of Property Owners, Title Roll Mylar, ROW Cost Estimate, Updated CAD File.

Design ROW Meeting Process Map



Generate Title Roll Mylar

Lead Designer

Start

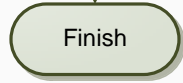
Prepare Survey Ground File for Title Roll Mylar:

1. Add Proposed Roadway Baseline
1. Omit Contours
2. Omit Drainage Elevations
3. Omit Survey Tie Boxes

Print the Modified Ground File to a Mylar Sheet

*CTDOT Staff may use Printer: DOT-QH3ENG-1_Oce_PlotWave_750 on DOT-SDCENG02
Click Printer Properties > Click Media Type > Select Film 4-4.5 mil

Finish



Who Contributed to this Process Map

Bruce Bourgojn: CTDOT Bureau of Engineering & Construction AEC Applications Engineering Supervisor

John Dudzinski: CTDOT Bureau of Engineering & Construction - AEC Applications Transportation Engineer III

Nicholas Langer: CTDOT Bureau of Engineering & Construction - AEC Applications Transportation Engineer II

Douglas Hummel: CTDOT Bureau of Engineering & Construction – Office of ROW Property Agent II

Scott Bushee: CTDOT Bureau of Engineering & Construction – State Highway Design Engineering Supervisor

Scott Elsdon: CTDOT Bureau of Engineering & Construction – Office of Central Surveys Transportation Engineer III