

FOR COORDINATION THIS AREA
SEE PL-SM2

TOWER LEVEL NO. 2
ALL DIMENSIONS FROM HIGH
POINT OF FINISHED FLOOR
ELEVATION 42'-7 1/2"
FINISHED FLOOR TO SLAB ELEV. 8'-4 1/2"
FINISHED FLOOR TO SLAB OF DROP
PANEL ELEV. 7'-11"

NOTES
(0-0) RENOTES 2 OF PIPE FROM FLOOR
ELEVATION 42'-7 1/2"
* " " 2 OF PIPE BELOW SLAB

Arch. Note -
CONFLICT WITH HUNG CEILING
RECESSED LIGHTS - DROPPED
& STORE FRONT GLASS

HANGER NOTES
RENOTES MULTI-FASTENER, M.T.
ROD & A.S. RING

RECEIVED
MAY 24 1961
WELTON BECKETT ASSOCIATES

SLEEVE DWG. NO. 1

0002	2-26-60	KLEBERG	
	2-26-60	GRINNELL FIRE	WJ
	2-26-60	DOUGL. ETC.	JE
	2-26-60	HARRY GAUBERTY/CO.	BY
		DATE	CONTRACT NO.

NO.	DATE	BY	REVISIONS	PARTICULARS		MATERIAL PRODUCTIONS		SPECIAL PURPOSE SPRINKLER/ROZES		ACTUATING DEVICES		SPRINKLERS		SYSTEM
				TYPE	TEMP.	TYPE	TEMP.	TYPE	TEMP.	TYPE	TEMP.	TYPE	TEMP.	
1														
2														
3														
4														
5														
6														
7														
8														
9														
TOTAL														

GRINNELL FIRE PROTECTION SYSTEMS

These Plans Prepared At
CRANSTON
Engineering Dept.

CONTRACT NAME
**XEROX CENTRE
HARTFORD CONN.**

CONTRACT WITH
**GEORGE A. FULLER CO.
2 WOODBINE STREET
HARTFORD CONN.**

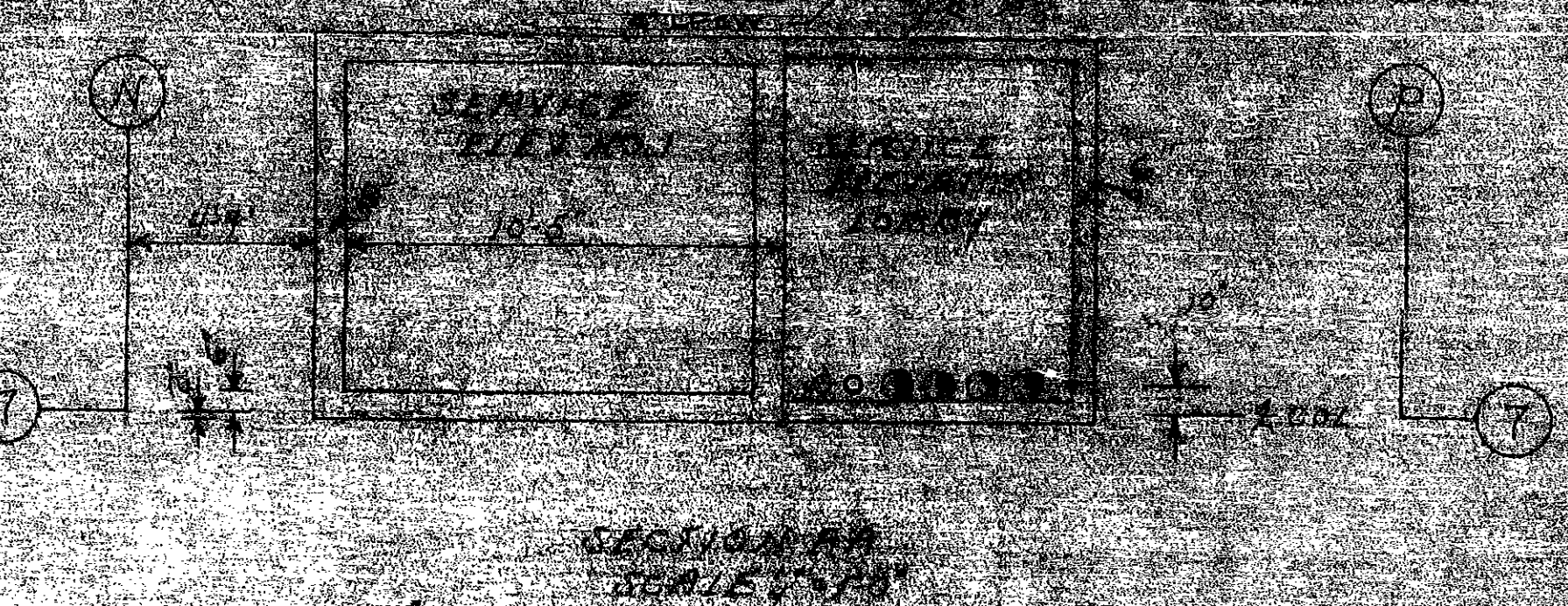
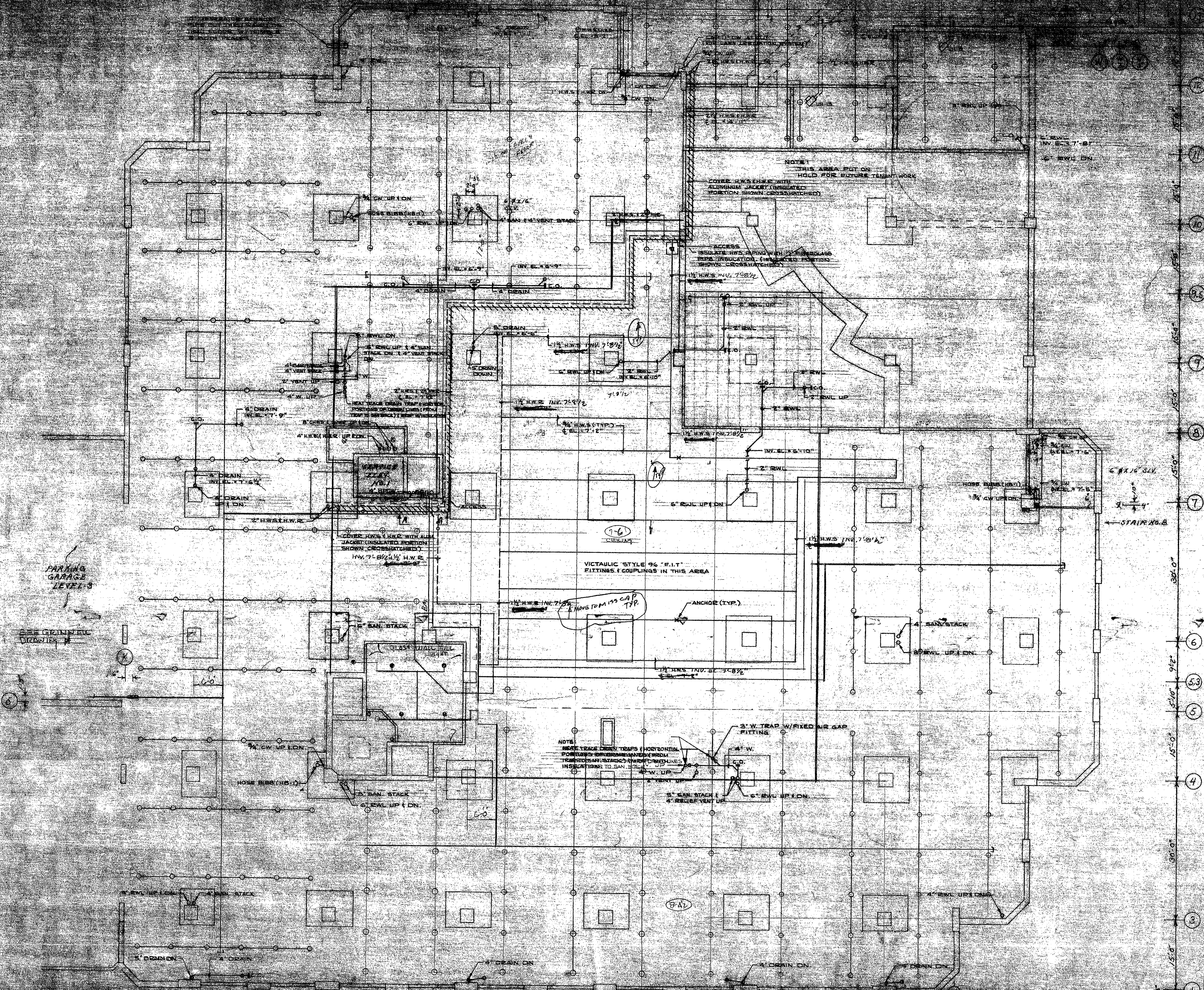
**PARKING LEVEL NO. 2
TOWER
ELEVATION 51'-9 1/4"**

SCALE: 1/2" = 1'-0"

DATE: 5-10-60

CONTRACT NO. 75-38

IMPORTANT
IN LOCATIONS SUBJECT TO FREEZING
CONDITIONS IT IS THE OWNER'S
RESPONSIBILITY TO PROVIDE HEAT
THROUGHOUT WET PIPE SPRINKLER
SYSTEM AREAS AND IN ENCLOSURES
FOR DRY PIPE DELUGE AND OTHER
TYPES OF VALVES CONTROLLING WATER
SUPPLIED TO SPRINKLER SYSTEMS.



NOTE:
THIS AREA PUT ON
HOLD FOR FUTURE TENANT WORK
COVER H.W.S. H.W.E. WITH
ALUMINUM JACKET (INSULATED
PORTION SHOWN CROSS-HATCHED)

INSULATE H.W.S. PIPING WITH 2\"/>

COVER H.W.S. (H.W.E.) WITH ALUM.
JACKET (INSULATED PORTION
SHOWN CROSS-HATCHED)
H.W. 7 1/2\"/>

VICTAULIC STYLE 90 1/2\"/>

NOTE:
HERE TRAPS CLEAN TRAPS (HORIZONTAL
PORTIONS) BEING REMOVED FROM
TRAP CLEANING (TRAPS) TRAP CLEANING
INSULATION TO SAN. ST. CAP
TYP.

TOWER LEVEL NO. 3
ALL DIMENSIONS FROM HIGH POINT
OF FINISHED FLOOR ELEVATION 66-10 1/2'
FINISHED FLOOR TO SLAB ELEV. 66-4 1/2'
FINISHED FLOOR TO SLAB OF DROP
PANEL ELEV. 7-11 1/2'

NOTES
10'-0\"/>

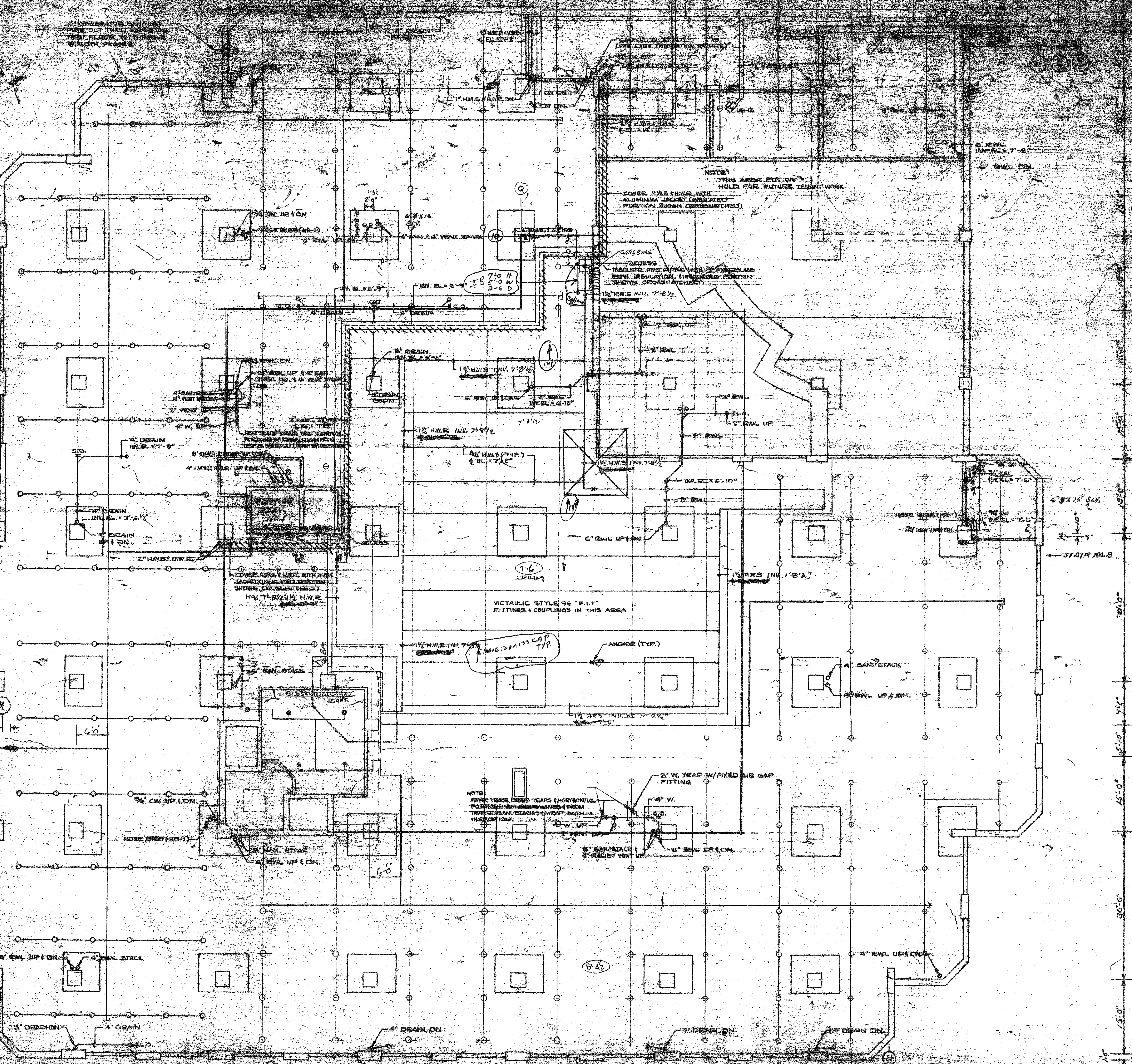
HANGER NOTES
DIMENSIONS H.W.S. H.W.E. H.W. H.W.E.
H.W. H.W.E. H.W. H.W.E.

RECEIVED
JUL 24 1987
WELTON DECKY ASSOCIATES

DRAWING NO. 2	
3102 WASH	DRINKING FIRE
3102 1A7	K.S.M.
3102 117	H.A.S.M.
DATE: 8/85	BY: [Signature]
DATE: [Blank]	BY: [Blank]

SEAL
WELTON DECKY ASSOCIATES
Professional Engineers, Inc.
1000 15th Street, N.W.
Washington, D.C. 20004
No. 1000
0003

	These Plans Prepared At CHAMBERLAIN Engineering Dept.	APPROVED FOR THE PORT FORTAL COMPANY PROJECT NO. 88-0003 DRAWING NO. 2 TOWER LEVEL NO. 3 MECHANICAL PLAN	PREPARED BY K.S. MULLER DATE: 12-27-86
--	--	--	---



10\"/>

NOTE: THIS AREA SET ON HOLD FOR FUTURE TIGHT WORK
 COVER H.W.S. PIPING WITH ALUMINUM JACKET (INSULATED PORTION SHOWN CROSS-HATCHED)

ACCESS: INSULATE H.W.S. PIPING WITH 1\"/>

NOTE: HANGERS SHALL BE TRAPS (HORIZONTAL PORTIONS) FOR STEAM-HEATED PIPING. TRAPS SHALL BE 2\"/>

TOWER LEVEL NO. 3
 ALL DIMENSIONS FROM HIGH POINT OF FINISHED FLOOR ELEVATION 60'-10\"/>

NOTES
 (10'-0\"/>

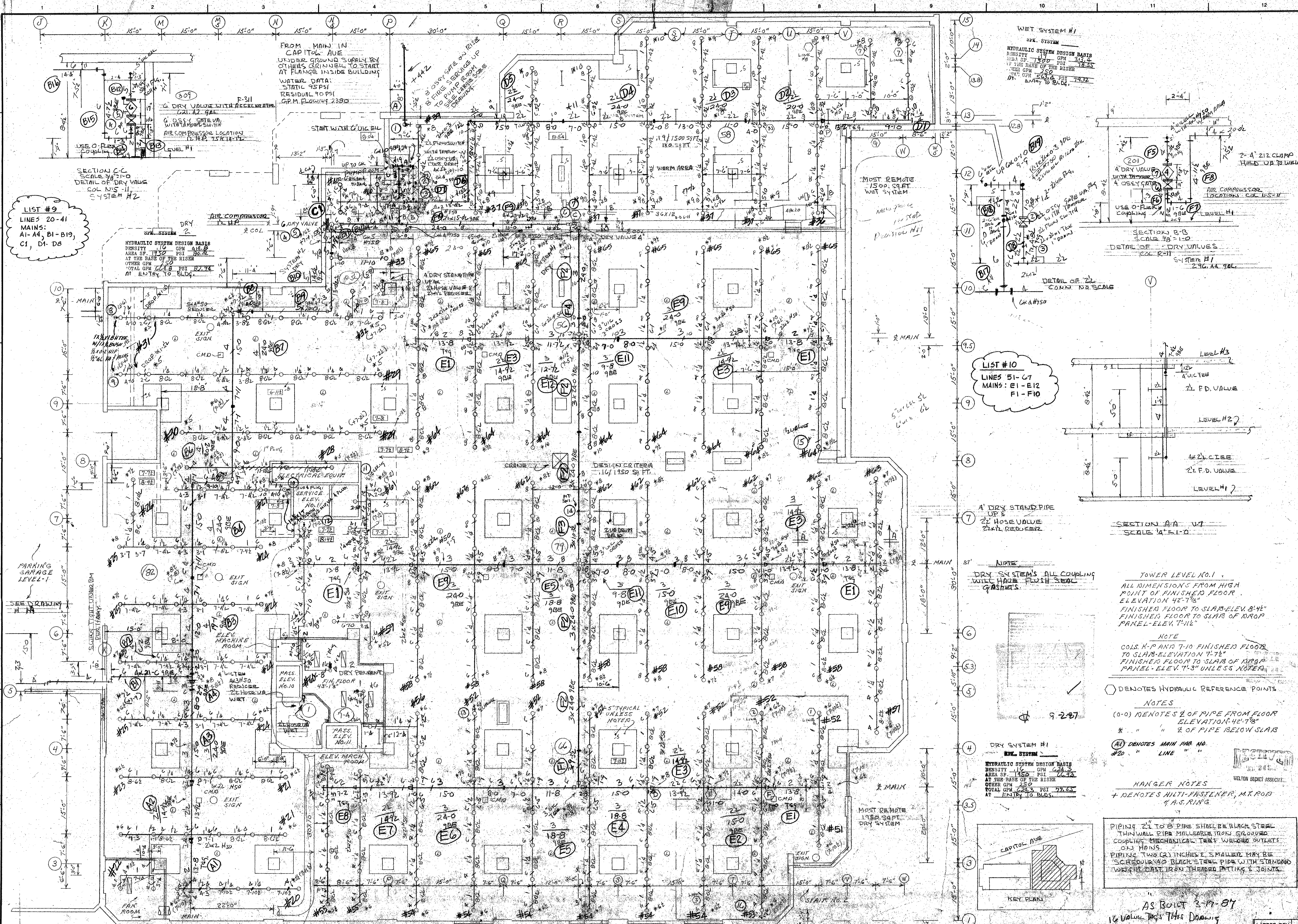
HANGER NOTES
 HANGERS SHALL BE STEELER, NOT RODS OR RINGS

REVISIONS
 JUL 24 1968
 GREENWELL ENGINEERING

REV. NO. 2		
3-10-68	W.S.H.	GREENWELL ENG.
3-10-68	187	K.S.M.
3-10-68	177	H.O.T. INC.
3-10-68	180	D.M.C.
DATE	BY	COMPANY

PROJECT NO.	0004
CLIENT	AT&T CENTRE
LOCATION	NEW YORK, N.Y.
DATE	DEC-27-68
DESIGNER	GREENWELL ENGINEERING
CHECKED	
APPROVED	

NO.	DATE	DESCRIPTION	BY	CHECKED	APPROVED
1					
2					
3					
4					
5					
6					
7					
8					
9					
10					
11					
12					
13					
14					
15					
16					
17					
18					
19					
20					



NO.	DATE	BY	PROTECTORS		MULTI-SPRINKLERS		SPECIAL PURPOSE SPRINKLER NOZZLES		ACTUATOR DEVICES		SPRINKLERS		SYSTEM
			TYPE	QUANT.	TYPE	QUANT.	TYPE	QUANT.	TYPE	QUANT.	TYPE	QUANT.	
TOTAL													

IMPORTANT
IN LOCALITIES SUBJECT TO FREEZING CONDITIONS IT IS THE OWNER'S RESPONSIBILITY TO PROVIDE HEAT THROUGHOUT WET PIPE SPRINKLER SYSTEM AREAS AND IN ENCLOSURES FOR DRY PIPE VALVES AND OTHER TYPES OF VALVES CONTROLLING WATER SUPPLIES TO SPRINKLER SYSTEMS.

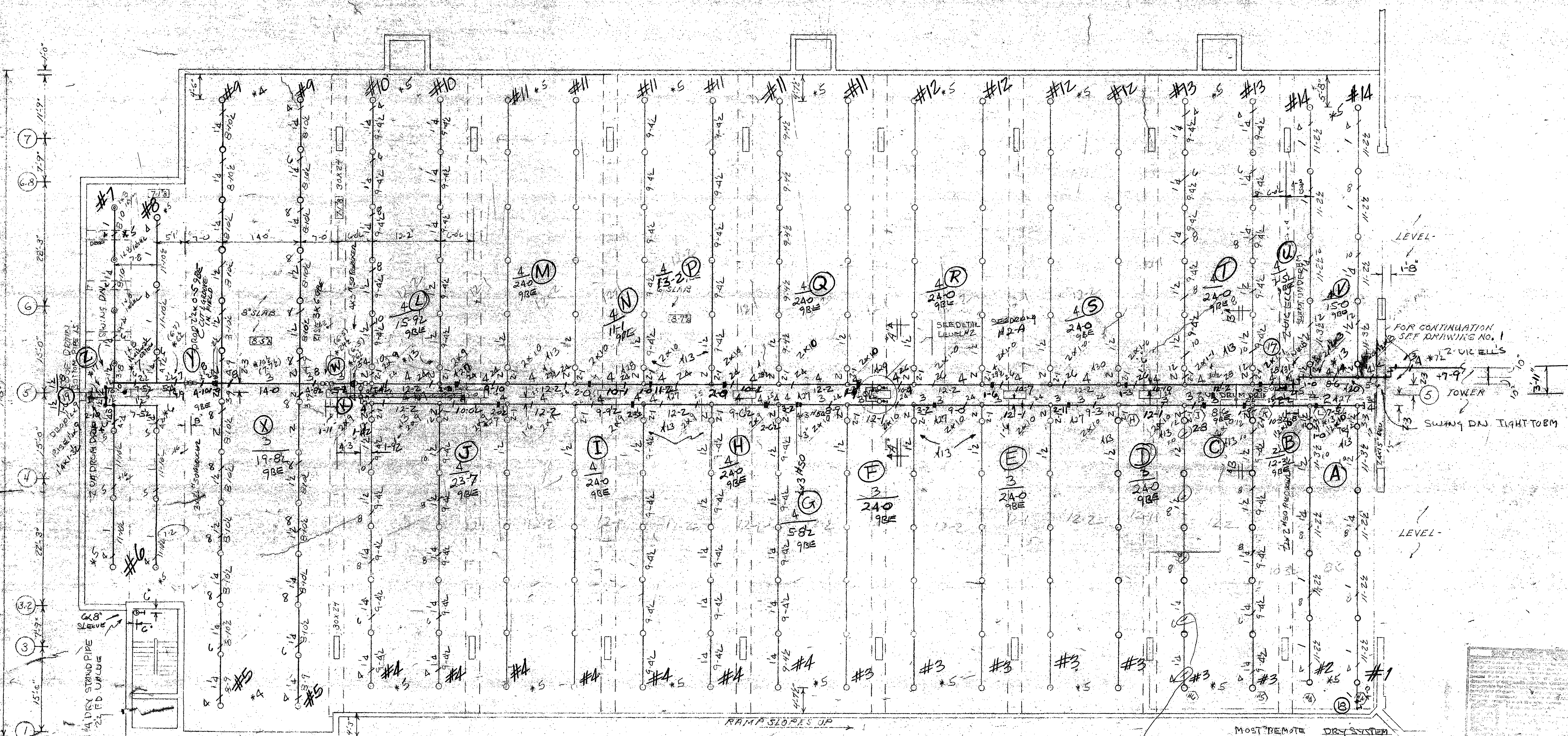
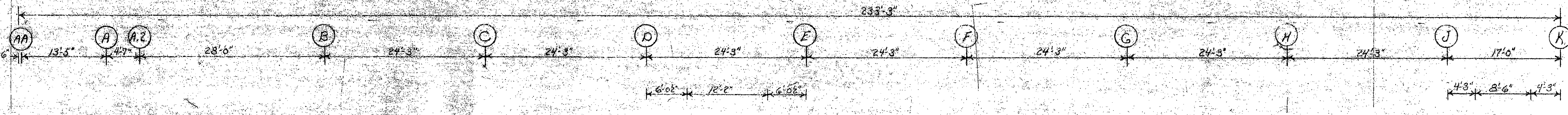
CONTRACT NAME: XEROX CENTRE HARTFORD CONN.

SCALE: 1/8"=1'-0"

DATE: 3-18-87

DESIGNER: GRUNNELL FIRE PROTECTION SYSTEMS

PROJECT: XEROX CENTRE HARTFORD CONN.



DRY SYSTEM H2
 H2A SYSTEM
 HYDRAULIC SYSTEM DESIGN BASIS
 DENSITY 1.40 GPM 412.2
 AREA OF 1.850 PSI 182.2
 AT THE BASE OF THE RISER
 OTHER GPM 1.850
 TOTAL GPM 224.8 PSI 92.98
 1" ENTRY TO BLDG.

PARKING LEVEL NO. GARAGE
 ALL DIMENSIONS FROM HIGH POINT OF FINISHED FLOOR ELEVATION
 FINISHED FLOOR TO SLAB R.I.F. 3'-7 3/8
 COLS. 1-8 4'-13 1/8, 8'-5 3/8 COLS. 11-8 4'-11 1/8

DESIGN CRITERIA
 16/1950 139 SFT
 ADD H1.

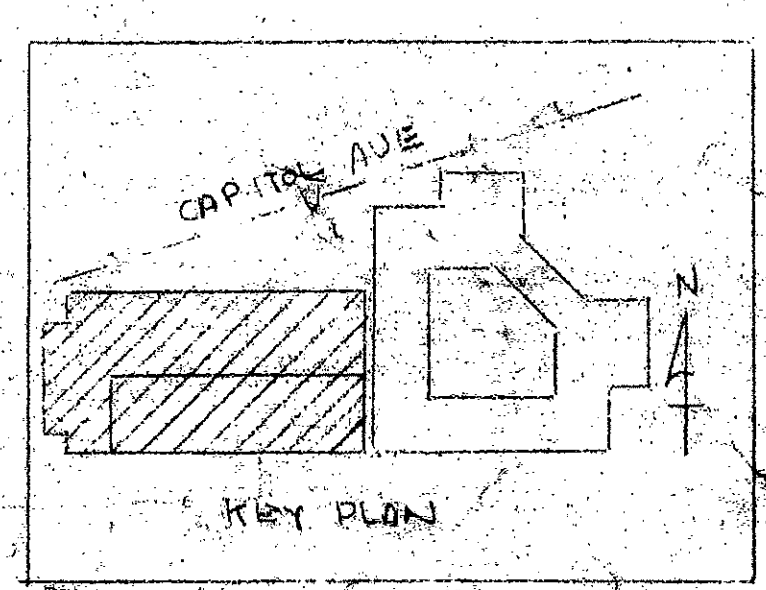
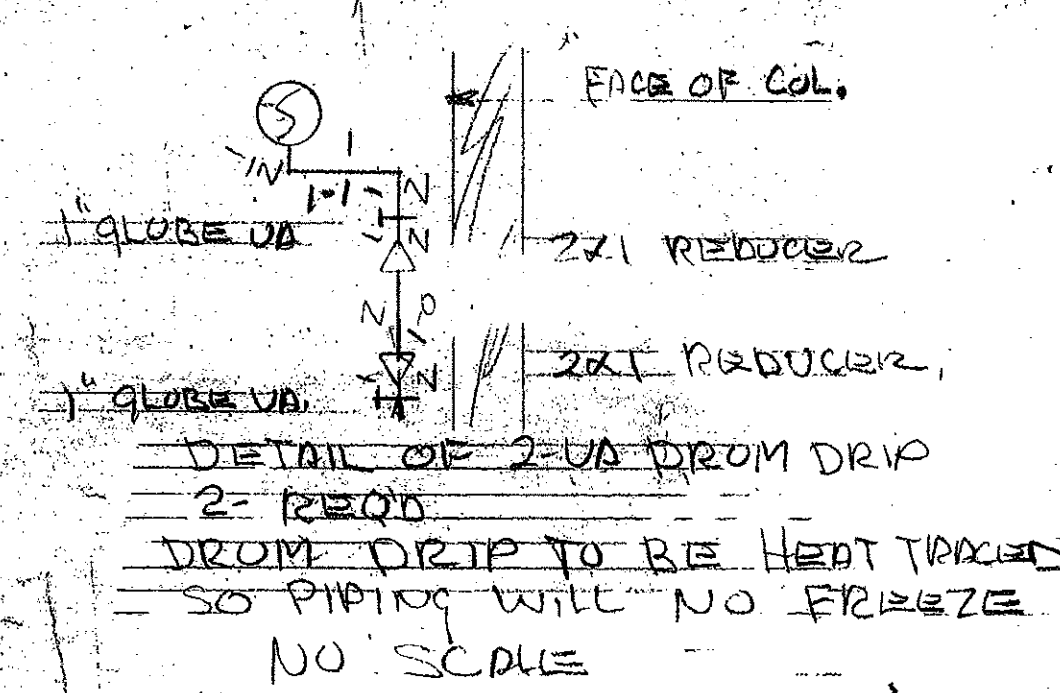
MOST REMOTE DRY SYSTEM TEST COUPLER

ALL GROUNDS COUPLERS TO HAVE FLUSH SEAL GASKETS
DRY SYSTEM
ALL REDUCERS TO BE VIC #50

NOTE TO FORMER: WHEN DRILLING MULTILINE HANGERS AVOID DRILLING INTO CABLES IN SLAB.

NOTES
 (C) DENOTES 2" OFF PIPE FROM FLOOR ELEVATION
 * " " 1/2" OF PIPE BELOW SLAB
 " " " HIGH POINT OF FLOOR SLAB TO ROOF SLAB, BEAM JUNCTION OR COLUMN CAP
 (O) DENOTES HYDRAULIC REFERENCE POINTS

HANGER NOTES
 + DENOTES MULTI-FASTENED, M.I.R.C. 5/8" RING



PIPING 2 1/2 TO 8" PIPE SHALL BE BLACK STEEL THINWALL PIPE MILLERED FROM GROUND COUPLER MECHANICAL TEES WELDED OUT LETS ON MAINS.
 PIPING TWO OR INCHES & SMALLER MAY BE SCHEDULE 40 BLACK STEEL PIPE WITH STANDARD WEIGHT CAST IRON THEMED FITTING & JOINTS.

AS BUILT 3-17-87
 3 Taps This Drawing

NO.	DATE	BY	REVISION	PROTECT SPRAY NOZ.		MULTIPLY PROTECTORS		SPECIAL PURPOSE SPRINKLER/INDICATED		ACTUATING DEVICES		SPRINKLERS		SYSTEM	
				TYPE	TEMP	NO.	OFFICE	QUANT.	TYPE	SYMBOL	TEMP	OFFICE	QUANT.	TYPE	SYMBOL

IMPORTANT
 IN LOCALITIES SUBJECT TO FREEZING CONDITIONS IT IS THE OWNER'S RESPONSIBILITY TO PROVIDE HEAT THROUGHOUT THE SPRINKLER SYSTEM MAINS AND IN EXCESSIVE FOR DRY PIPE, DELUGE AND OTHER TYPES OF VALVE CONTROL INDICATED BY THE CONTRACT DOCUMENTS.

GRUNNELL FIRE PROTECTION SYSTEMS

These Plans Prepared At
CRANFORD
 Engineering Dept.

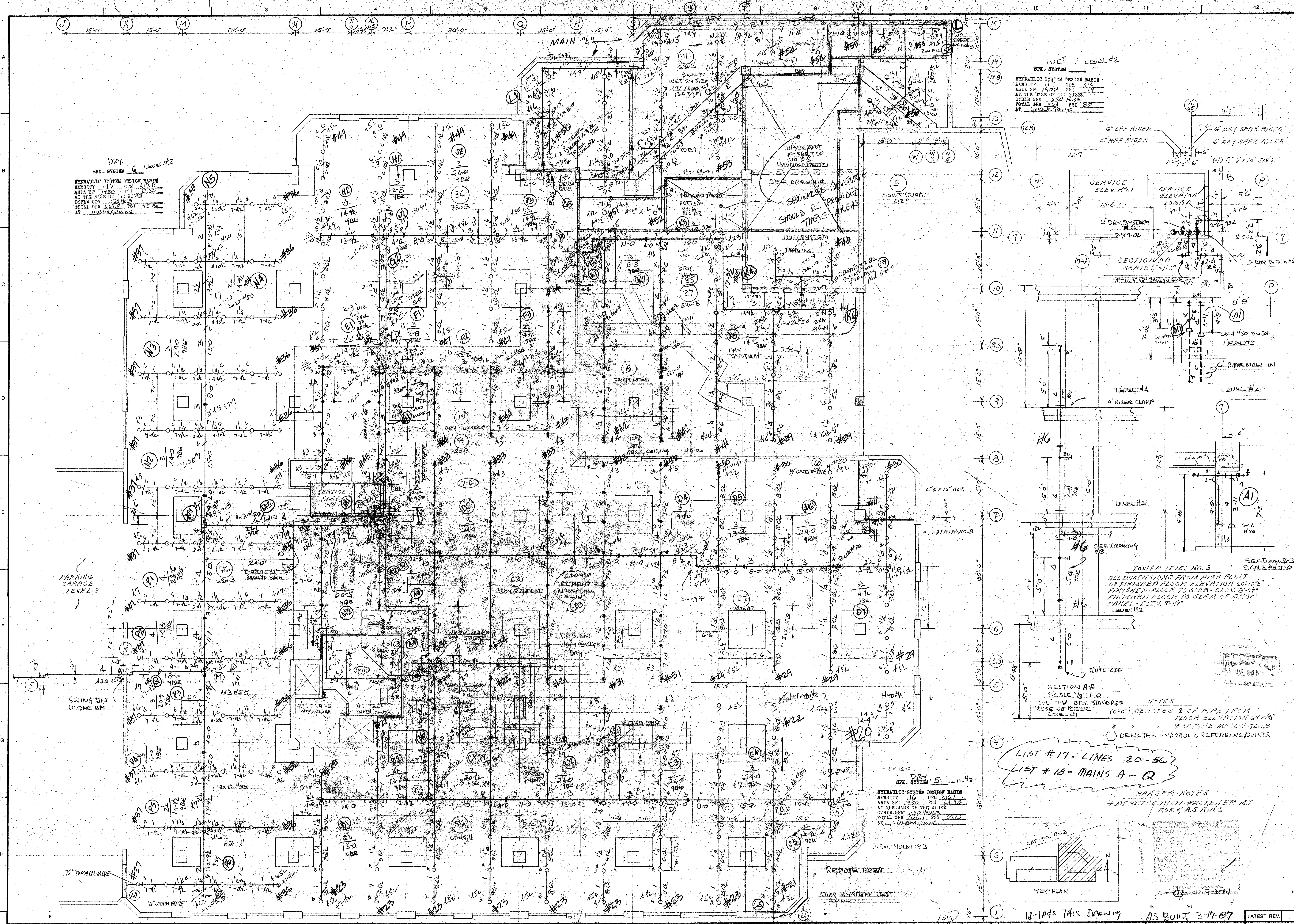
CONTRACT NAME
 KEROX CENTRE
 HARTFORD, CONN.

CONTRACT NO.
 GEORGE W. FULLER CO.
 2 WOODBINE STREET
 HARTFORD, CONN.

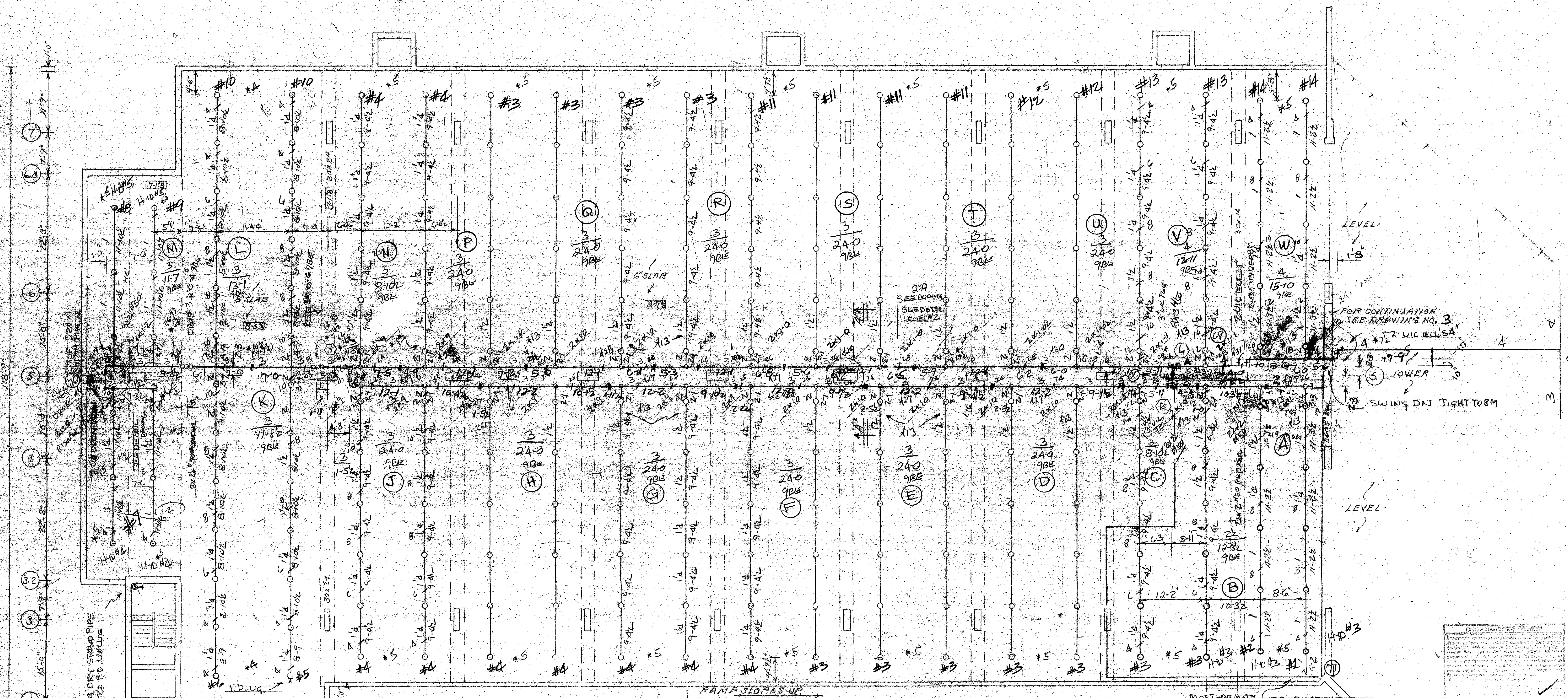
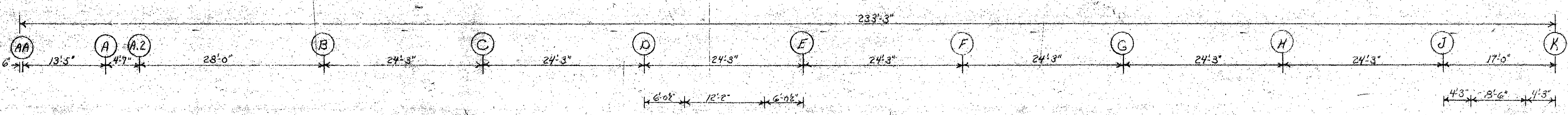
PARKING LEVEL NO. 1 GARAGE ELEVATION

SCALE: 1/8" = 1'-0"

DATE: 3-17-87



NO.	DATE	BY	REVISIONS	PROTECTIVE/PROV. NOZ.				MULTI-SPR. PROJECTORS				SPECIAL PURPOSE SPINKERS/NOZZLES				ACTIVATED DEVICES				SPRINKLERS				SYSTEM				
				TYPE	TEMP.	ORIF.	QUANT.	TYPE	SYMBOL	QUANT.	TYPE	SYMBOL	TEMP.	ORIF.	QUANT.	TYPE	SYMBOL	TEMP.	ORIF.	QUANT.	TYPE	SYMBOL	TEMP.		ORIF.	QUANT.		



DRY SYSTEM #6 LEVEL #3
 HYDRAULIC SYSTEM DESIGN BASIS
 DENSITY GPM 417.6
 AREA SF 1950 PST 72.51
 AT THE BASE OF THE RISER
 OTHER GPM 250 HOURS
 TOTAL GPM 667.6 PST 75.02
 1" UNIFORM GRADE

PARKING LEVEL NO. GARAGE
 ALL DIMENSIONS FROM HIGH POINT OF FINISHED FLOOR ELEVATION
 FINISHED FLOOR TO SLAB ELEV 8'-7 3/8
 COLS. 1-B, 13-K, 8-5 3/8 COLS. 1-B, 7-A, 1-B

DESIGN CRITERIA
 116, 1350, 150 SFT
 ADD #1

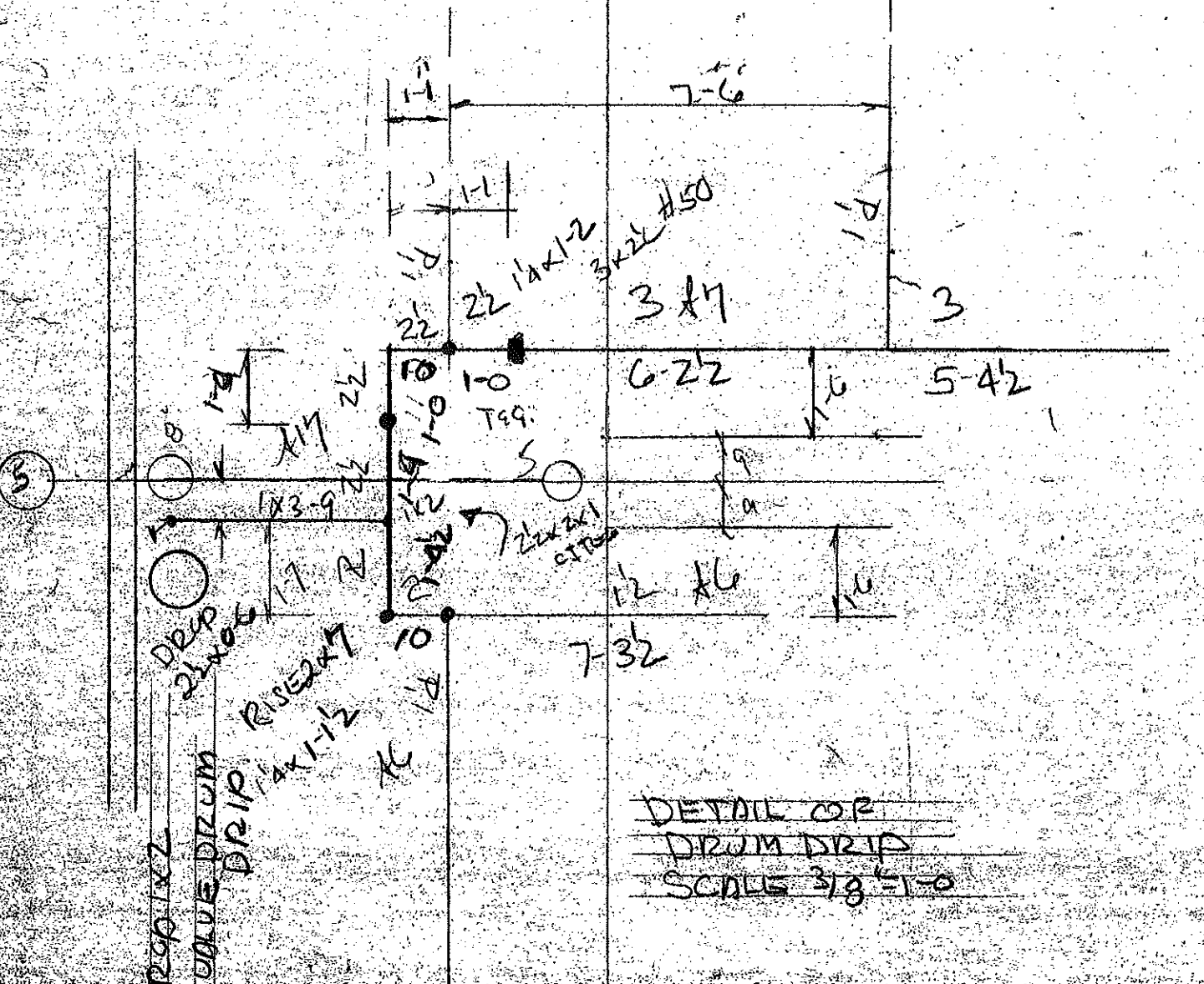
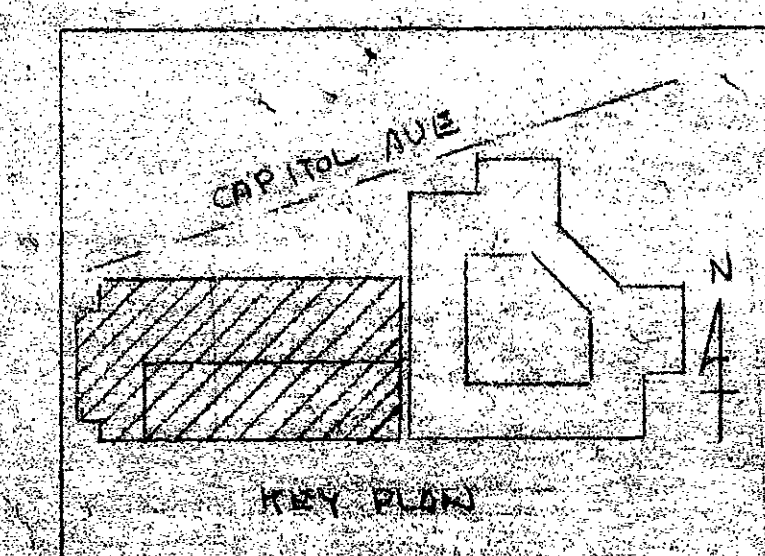
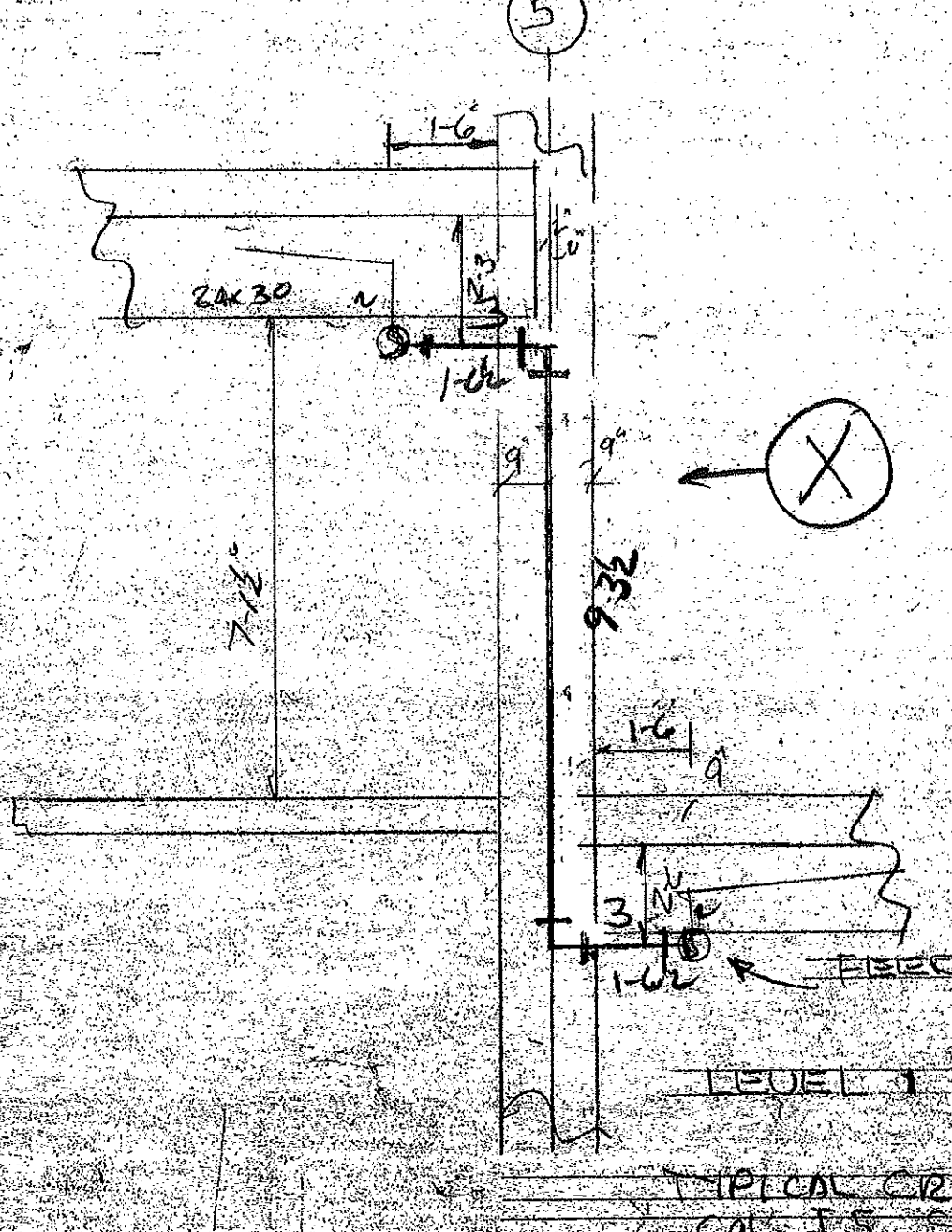
DRY SYSTEM TEST CONN

NOTES
 (O-C) DENOTES 2" OF PIPE FROM FLOOR ELEVATION
 * " " " 2" OF PIPE BELOW SLAB
 * " " " HIGH POINT OF FLOOR SLABS TO ROOF SLAB BEAM BOTTOM OR COLUMN CAP
 O DENOTES HYDRAULIC REFERENCE POINTS

LIST #16
 MAINS A-W
 LINES 1-15
 LINE 16 = MISC MAT'L
 COLOR BLUE

HANGER NOTES
 * DENOTES MULTI-FASTENER, MISRD, C.A.S. RING

PIPING 2 1/2 TO 8" PIPE SHALL BE BLACK STEEL
 THIN WALL PIPE MALLEABLE IRON GROUND COUPLING
 MECHANICAL TEES, VALVED OUTLETS ON MAINS
 PIPING TWO (2) INCHES & SMALLER MAY BE SCHEDULE 40 BLACK STEEL PIPE WITH STANDARD WEIGHT CAST IRON THREADED FITTINGS & JOINTS



LINES 7 & 15
 1" COUPLER
 2" REDUCER
 2" REDUCER
 1" COUPLER
 2" VALVE DRAIN DRIP
 2" REDUCER
 COL. 1-B
 COL. A-B-5

NO.	REV.	DESCRIPTION	DATE	BY	CHK.	APP.
1	1	ISSUED FOR PERMIT	11/15/10	JM	SM	SM
2	2	REVISION	11/15/10	JM	SM	SM
3	3	REVISION	11/15/10	JM	SM	SM
4	4	REVISION	11/15/10	JM	SM	SM
5	5	REVISION	11/15/10	JM	SM	SM
6	6	REVISION	11/15/10	JM	SM	SM
7	7	REVISION	11/15/10	JM	SM	SM
8	8	REVISION	11/15/10	JM	SM	SM
9	9	REVISION	11/15/10	JM	SM	SM
10	10	REVISION	11/15/10	JM	SM	SM
11	11	REVISION	11/15/10	JM	SM	SM
12	12	REVISION	11/15/10	JM	SM	SM
13	13	REVISION	11/15/10	JM	SM	SM
14	14	REVISION	11/15/10	JM	SM	SM
15	15	REVISION	11/15/10	JM	SM	SM
16	16	REVISION	11/15/10	JM	SM	SM
17	17	REVISION	11/15/10	JM	SM	SM
18	18	REVISION	11/15/10	JM	SM	SM
19	19	REVISION	11/15/10	JM	SM	SM
20	20	REVISION	11/15/10	JM	SM	SM
21	21	REVISION	11/15/10	JM	SM	SM
22	22	REVISION	11/15/10	JM	SM	SM
23	23	REVISION	11/15/10	JM	SM	SM
24	24	REVISION	11/15/10	JM	SM	SM
25	25	REVISION	11/15/10	JM	SM	SM
26	26	REVISION	11/15/10	JM	SM	SM
27	27	REVISION	11/15/10	JM	SM	SM
28	28	REVISION	11/15/10	JM	SM	SM
29	29	REVISION	11/15/10	JM	SM	SM
30	30	REVISION	11/15/10	JM	SM	SM
31	31	REVISION	11/15/10	JM	SM	SM
32	32	REVISION	11/15/10	JM	SM	SM
33	33	REVISION	11/15/10	JM	SM	SM
34	34	REVISION	11/15/10	JM	SM	SM
35	35	REVISION	11/15/10	JM	SM	SM
36	36	REVISION	11/15/10	JM	SM	SM
37	37	REVISION	11/15/10	JM	SM	SM
38	38	REVISION	11/15/10	JM	SM	SM
39	39	REVISION	11/15/10	JM	SM	SM
40	40	REVISION	11/15/10	JM	SM	SM
41	41	REVISION	11/15/10	JM	SM	SM
42	42	REVISION	11/15/10	JM	SM	SM
43	43	REVISION	11/15/10	JM	SM	SM
44	44	REVISION	11/15/10	JM	SM	SM
45	45	REVISION	11/15/10	JM	SM	SM
46	46	REVISION	11/15/10	JM	SM	SM
47	47	REVISION	11/15/10	JM	SM	SM
48	48	REVISION	11/15/10	JM	SM	SM
49	49	REVISION	11/15/10	JM	SM	SM
50	50	REVISION	11/15/10	JM	SM	SM

LIST No. 22
 SPRK'S. = 119
 LINES: #1 TO #8
 MAINS: A TO L
 SON = 015460V.
 COLOR: RED

DRY SYSTEM
 HYDRAULIC SYSTEM DESIGN BASIS
 DENSITY 1.50 GPM 2.50
 AREA SP. 1.50 PSI 2.50
 AT THE BASE OF THE RISER ON 10TH
 OTHER GPM 2.50 PSI 2.50
 TOTAL GPM 2.50 PSI 2.50
 AT UNDERGRASS LEVEL

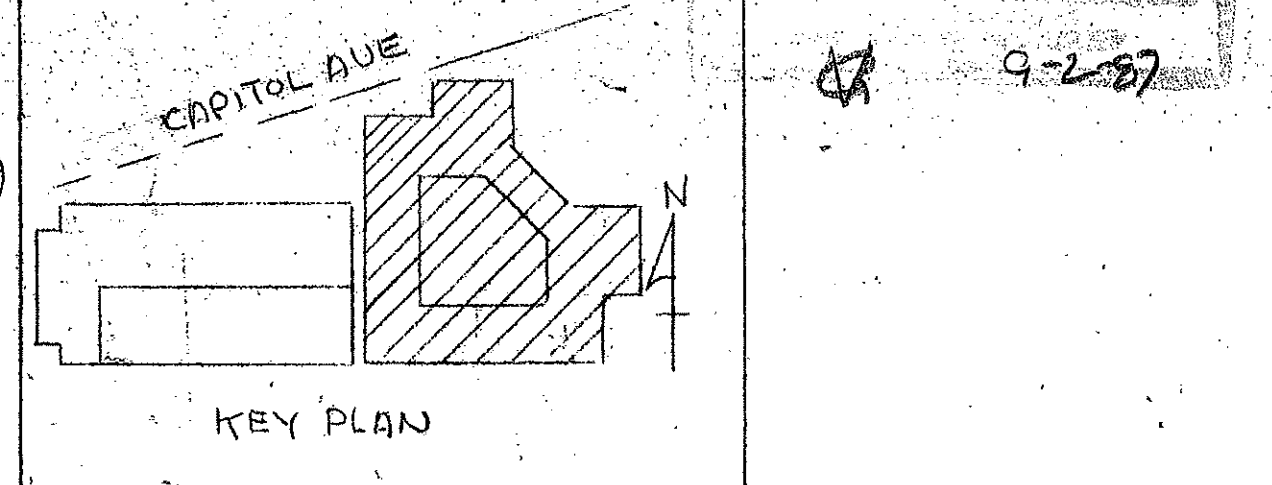
HYDRAULIC SYSTEM DESIGN BASIS
 DENSITY 1.50 GPM 2.50
 AREA SP. 1.50 PSI 2.50
 AT THE BASE OF THE RISER
 OTHER GPM 2.50 PSI 2.50
 TOTAL GPM 2.50 PSI 2.50
 AT UNDERGRASS LEVEL

LIST No. 23
 LINES: #1 TO #10
 MAINS: A TO J
 SPRK'S. = 84
 SON = 015468V
 COLOR: WHITE

NOTES
 * REMOTES & OFF. PIPE BELOW CONCRETE SLAB (6'-0") 2" OF PIPE INS. FINISHED

HANGER NOTES
 A DENOTES HILTI-FASTENER, M.T. ROD & AS RING
 O DENOTES HYDRAULIC REFERENCE POINTS

HYDRAULIC SYSTEM DESIGN BASIS
 DENSITY 1.50 GPM 2.50
 AREA SP. 1.50 PSI 2.50
 AT THE BASE OF THE RISER ON 10TH
 OTHER GPM 2.50 PSI 2.50
 TOTAL GPM 2.50 PSI 2.50
 AT UNDERGRASS LEVEL



AS BUILT 3-17-87 LATEST REV. 1

IMPORTANT
 IN LOCALITIES SUBJECT TO FREEZING CONDITIONS IT IS THE OWNER'S RESPONSIBILITY TO PROVIDE HEAT THROUGHOUT WET PIPE SPRAWLER SYSTEM AREAS AND ALL ACCESSORIES FOR ANY PIPE, BELOW AND OTHER TYPES OF VALVES CONTROLLING WATER SUPPLIED TO SPRAWLER SYSTEMS

DATE	BY	REVISION	PROTECTOGRAPHY NOZ				MULTI-PURPOSE PROJECTORS				SPECIAL PURPOSE SPRAWLER/NOZZLES				ACTUATING DEVICES				SPRAWLERS				SYSTEM			
			TYPE	TEMP.	QUANT.	OFFICE	TYPE	SYMBOL	QUANT.	TYPE	SYMBOL	TEMP.	QUANT.	TYPE	SYMBOL	TEMP.	QUANT.	TYPE	SYMBOL	TEMP.	QUANT.	TYPE	SYMBOL	TEMP.	QUANT.	
12-28-87	
TOTAL																										

GRINNELL FIRE PROTECTION SYSTEMS

These Plans Prepared At
CARLETON
 Engineering Dept.

CONTRACT NAME
**XEROX CENTRE
 HARTFORD, CONN.**

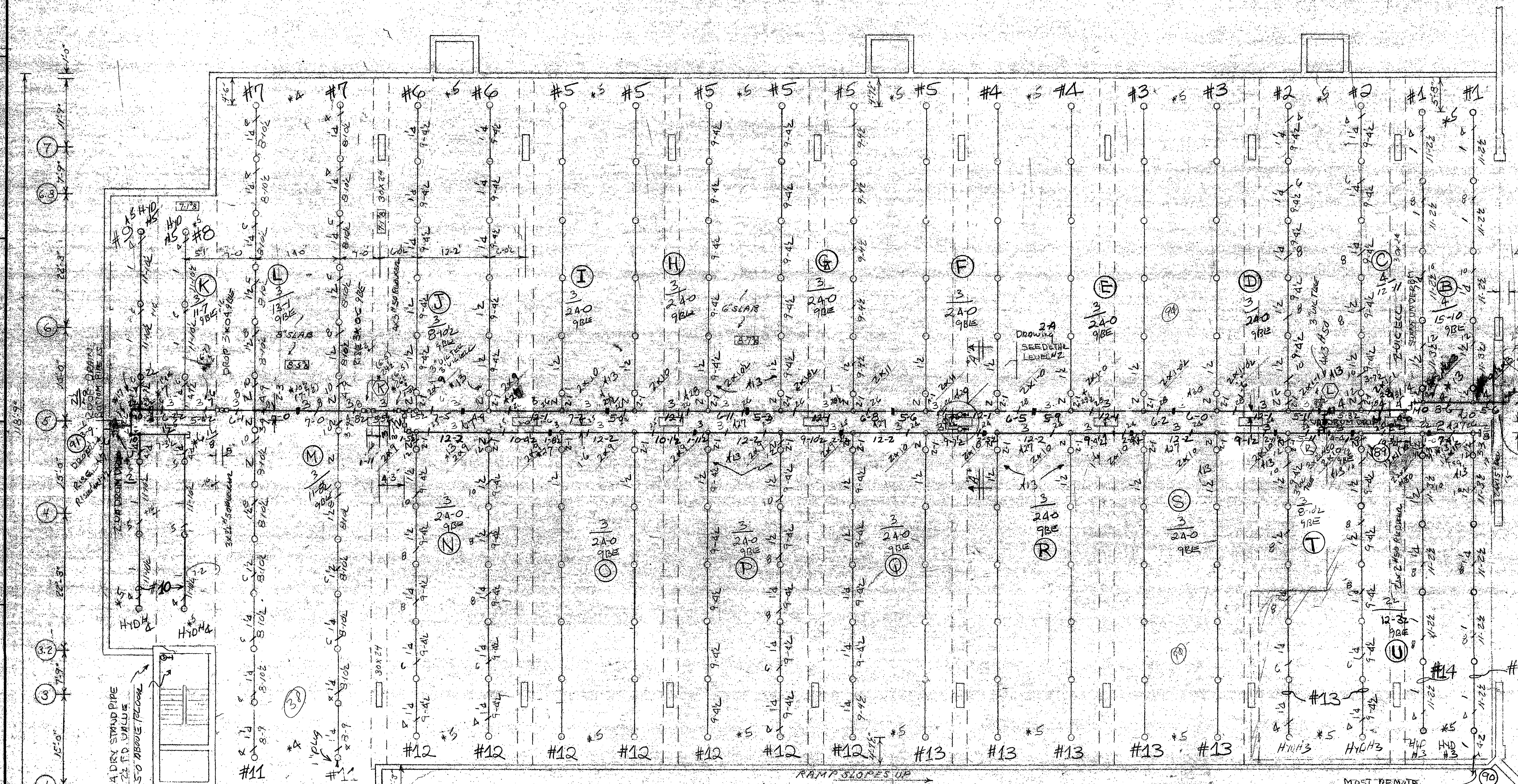
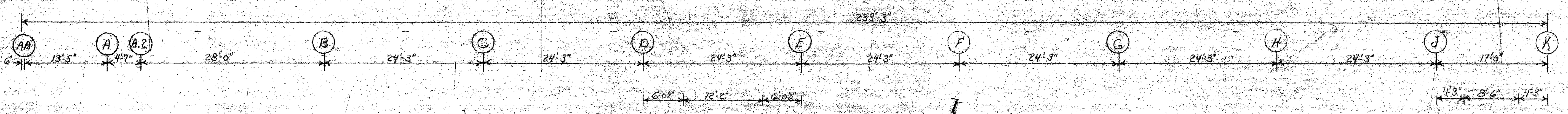
CONTRACT WITH
**GEORGE A. FULLER CO.
 2 PROSPECT STREET
 HARTFORD, CONN.**

DATE
3-2-87

SCALE
1/8" = 1'-0"

PROJECT NO.
171045 THIS DRAWING

DATE
3-2-87



DRY SYSTEM HYDRAULIC DESIGN BASIS

DENSITY 110 GPM 3.38
 AREA SP. 1750 PSI 13.37
 AT THE BASE OF THE RICHER DRY OR HT
 OTHER GPM 250 NONE
 TOTAL GPM 580 PSI 78.22
 1" UNDERGROUND CONN

PARKING LEVEL NO. GARAGE

ALL DIMENSIONS FROM HIGH POINT OF FINISHED FLOOR ELEVATION. FINISHED FLOOR TO SLAB - E.L. 1-3 7'3". COLS. 1-8 4'13", 8-5 8' COLS. 1-3 4'13"

LIST No. 21
 SPRK'S = 226
 LINES: #1 - #16
 MAINS: A TO H
 SON = 015429V
 COLOR: BLACK

DESIGN CRITERIA
 161150 130 S4FT
 ADD #1

DRY SYSTEM TEST COUPLER

NOTES

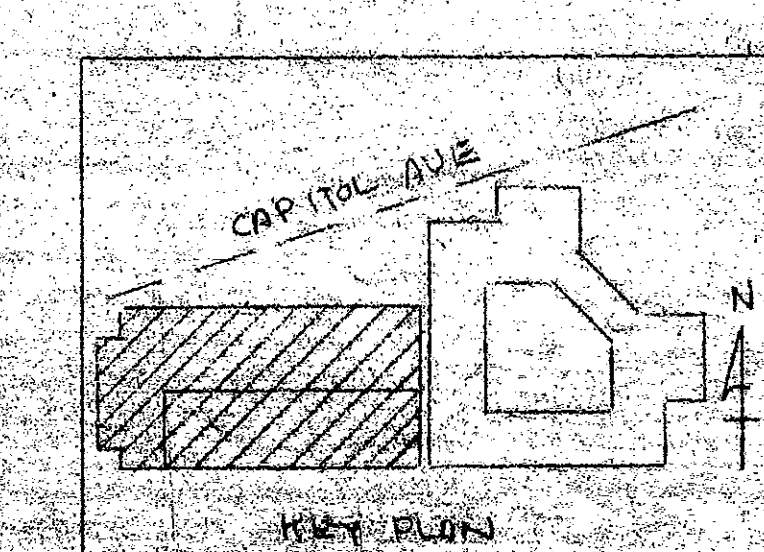
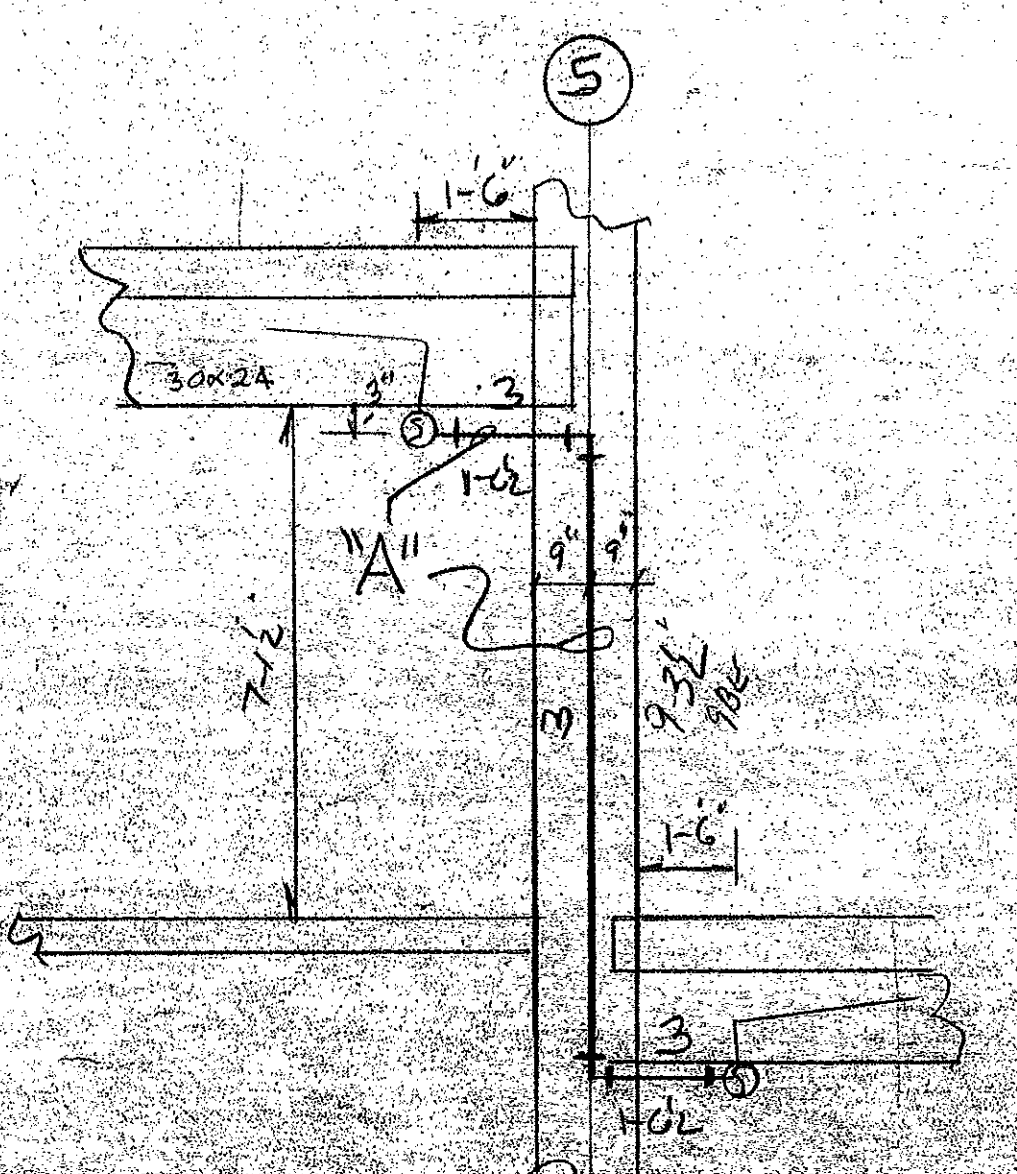
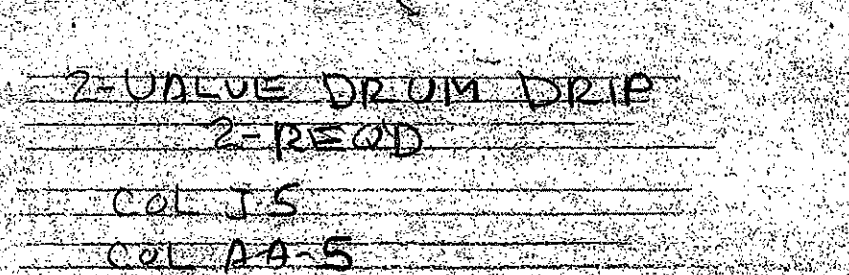
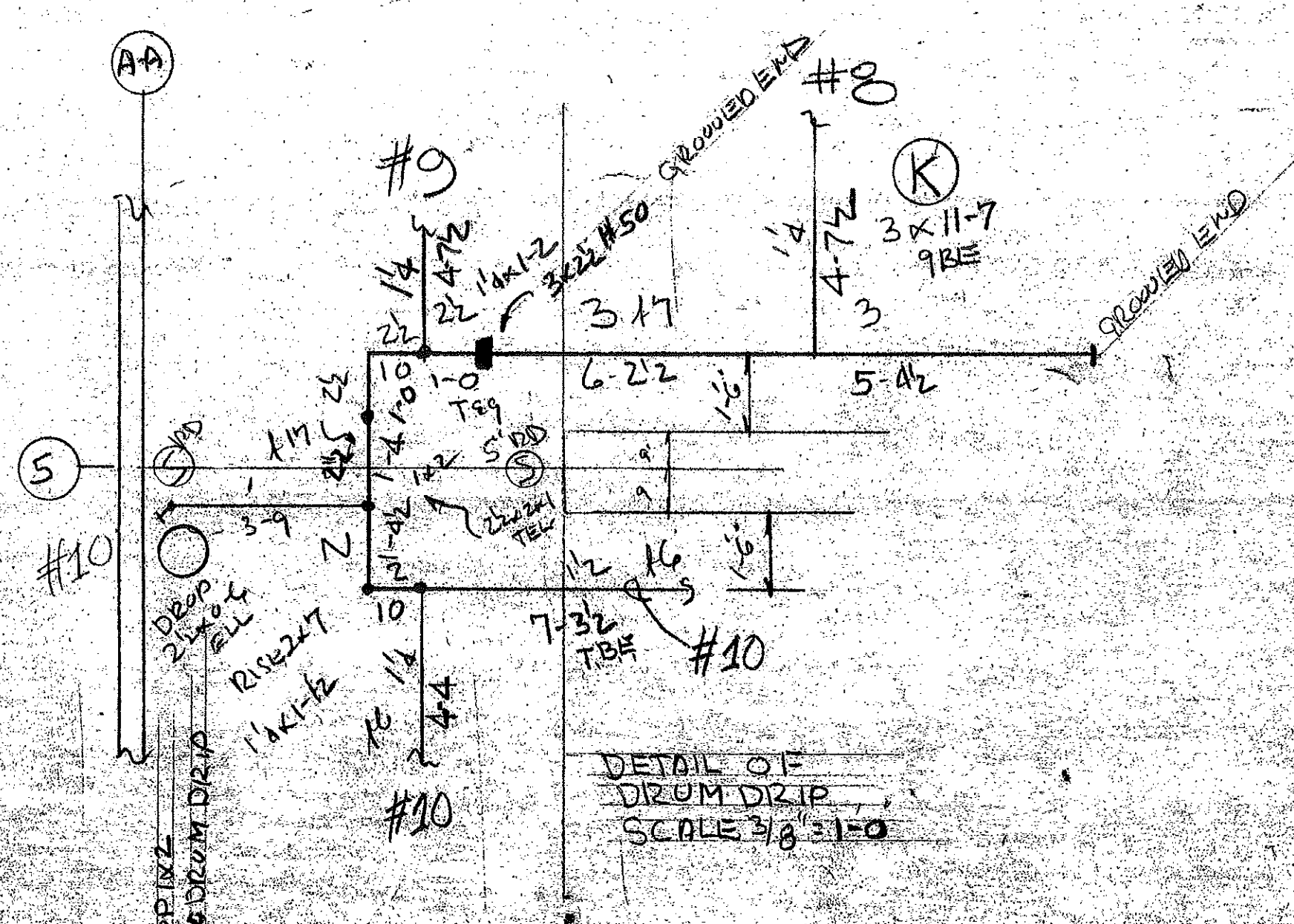
- (O) DENOTES 8" OF PIPE FROM FLOOR ELEVATION
- * " " " 2" OF PIPE BELOW SLAB
- " " " HIGH POINT OF FLOOR SLAB
- " " " TO ROOF SLAB, BEAM BOTTOM OR COLUMN CAP
- DENOTES HYDRAULIC REFERENCE POINTS

HANGER NOTES

- + DENOTES HANGERS, FASTENERS, M.I. RODS & ANCHORS

PIPING 2 1/2" TO 8" PIPE SHALL BE BLACK STEEL. THINWALL PIPE MALLEABLE IRON GROOVED COUPLING MECHANICAL TEES WELDED OUTLETS ON MAINS.

PIPING TWO (2) INCHES & SMALLER MAY BE SCHEDULE 40 BLACK STEEL PIPE WITH STANDARD WEIGHT CAST IRON THREADED FITTINGS & JOINTS.



AS BUILT 3-17-87

NO.	DATE	BY	REVISION	PROJECT/OWNER	DESIGNER	ENGINEER	INSPECTOR	SPECIAL PURPOSE APPROVALS	ACTUATING DEVICES	SPONSOR	SYSTEM	SCALE	LATEST REV.
1													
2													
3													
4													
5													
6													
7													
8													
9													
10													
11													
12													
13													
14													
15													
16													
17													
18													
19													
20													
21													
22													
23													
24													
25													
26													
27													
28													
29													
30													
31													
32													
33													
34													
35													
36													
37													
38													
39													
40													
41													
42													
43													
44													
45													
46													
47													
48													
49													
50													

CONTRACTOR
 KEROX CENTRE
 HARTFORD, CONN.

ENGINEER
 CRANFORD
 ENGINEERING CO.
 HARTFORD, CONN.

DATE
 6-12-86

SCALE
 AS SHOWN

PROJECT
 PARKING LEVEL NO. 4
 GARAGE
 ELEVATION

