



# Topsmead State Forest



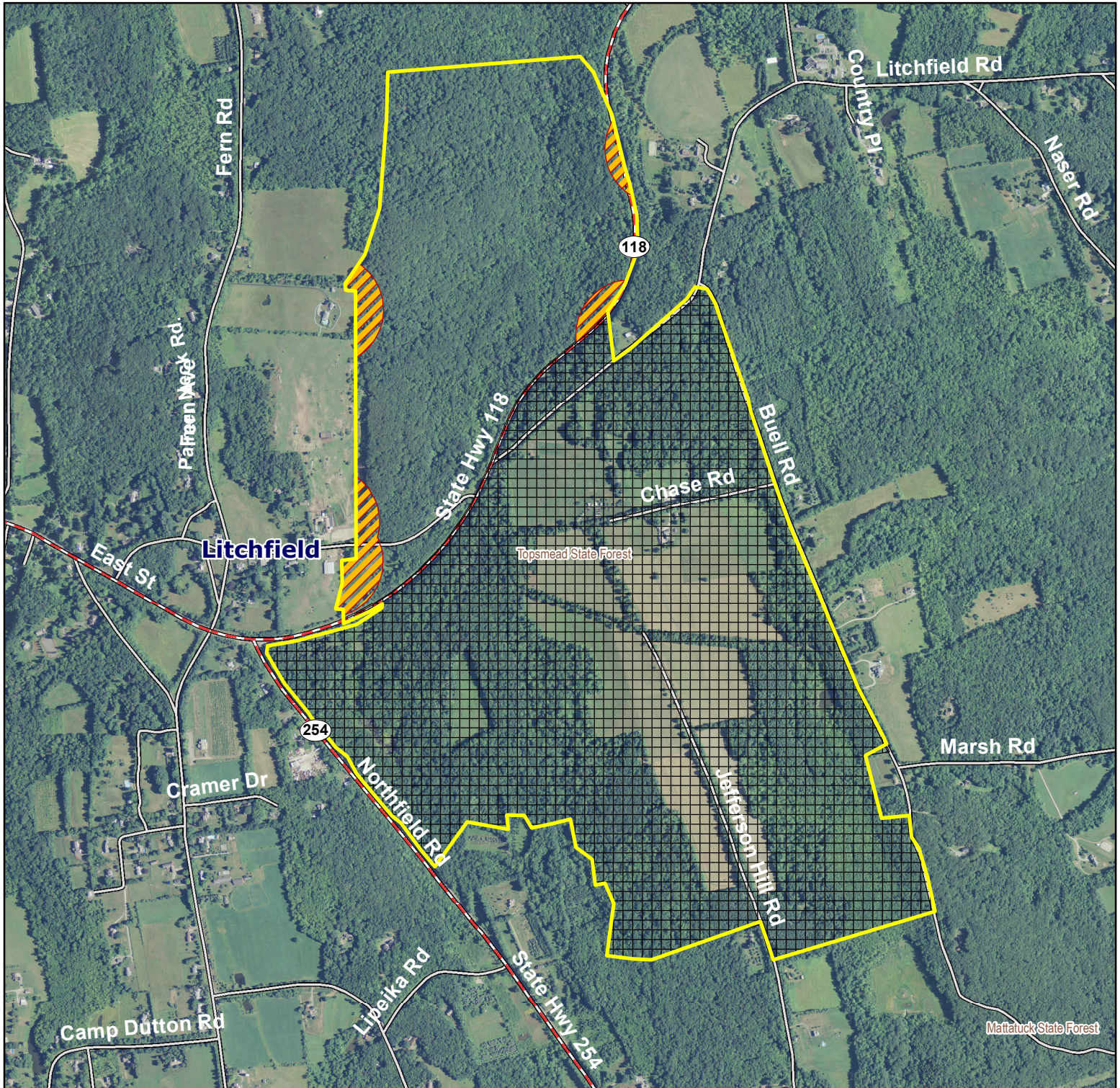
**Location:** Litchfield

**Description:** 634 acres, only 200 acres open to hunting (north and west of Rt. 118). Mixed hardwoods and agricultural fields.

**Access:** Access off of Rt. 118

**Note:** This map depicts an approximation of property boundaries. Please obey all postings.

**Symbol:** Approximate Boundary 500 foot buffer Closed to Hunting



Map Date: 12/3/15; Ortho 2012 NAIP

