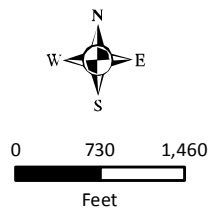


Sources: Connecticut Environmental Conditions Online (CT ECO); Connecticut Department of Environmental Protection (CT DEP); University of Connecticut Center for Land Use Education and Research (CLEAR); USDA/NRCS - National Cartography & Geospatial Center, 12-Digit Watershed Boundary Data 1:24,000; City of Bridgeport, Town of Trumbull, Town of Monroe.



**Legend**

- Subwatershed
- Retrofit Opportunity
- Potential Hotspot
- Neighborhood Site Assessment
- Stream Reach Rating**
- Excellent
- Good
- Fair
- Marginal
- Poor
- Not Assessed

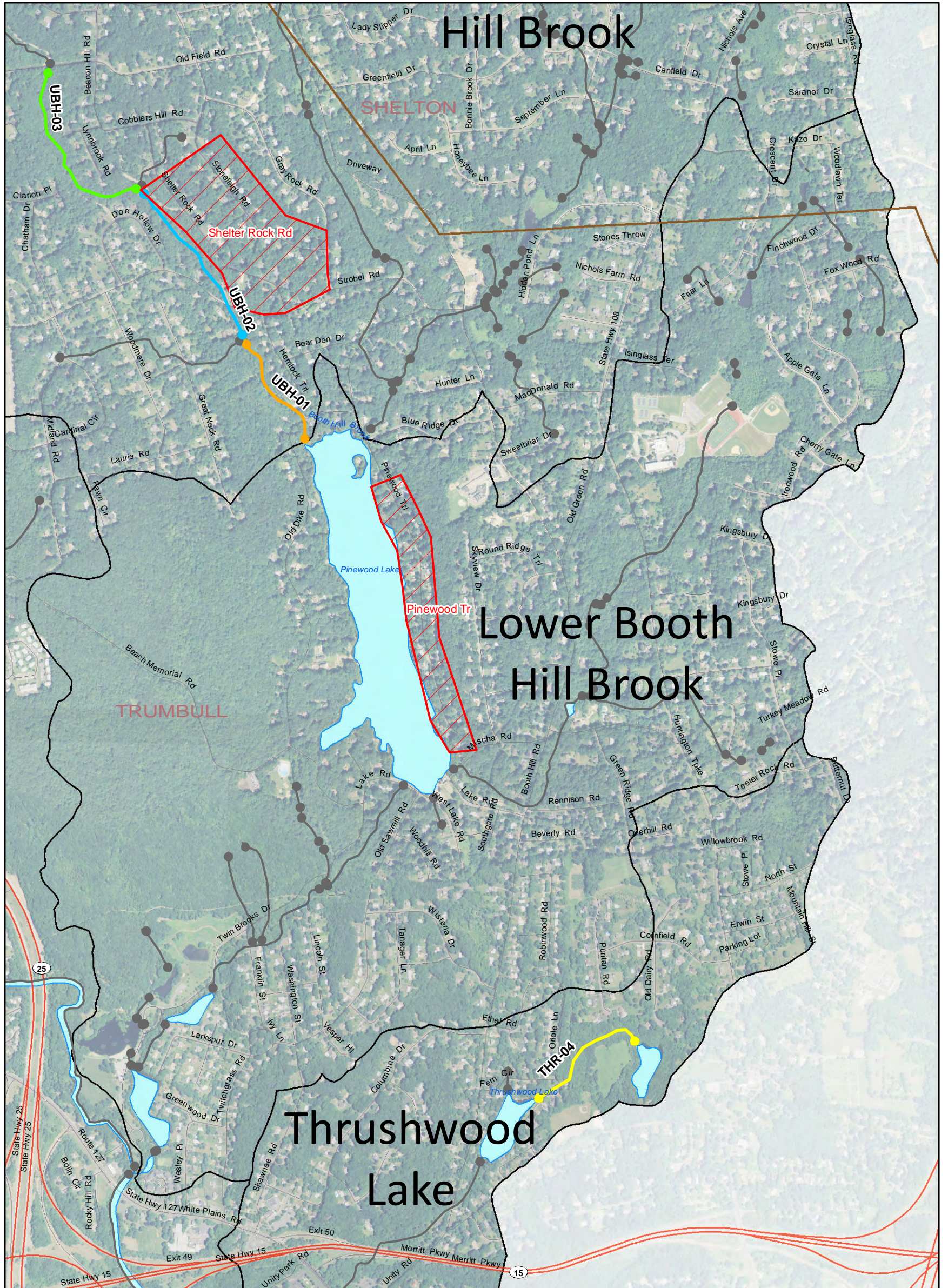
www.FandO.com



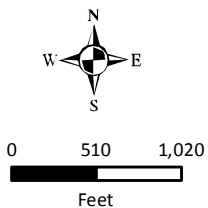
Field Assessments  
Island Brook

PEQUONNOCK RIVER  
WATERSHED-BASED PLAN

MONROE, TRUMBULL, & BRIDGEPORT  
CONNECTICUT



Sources: Connecticut Environmental Conditions Online (CT ECO); Connecticut Department of Environmental Protection (CT DEP); University of Connecticut Center for Land Use Education and Research (CLEAR); USDA/NRCS - National Cartography & Geospatial Center, 12-Digit Watershed Boundary Data 1:24,000; City of Bridgeport, Town of Trumbull, Town of Monroe.



**Legend**

- Subwatershed
- Retrofit Opportunity
- Potential Hotspot
- Neighborhood Site Assessment
- Stream Reach Rating**
- Excellent
- Good
- Fair
- Marginal
- Poor
- Not Assessed

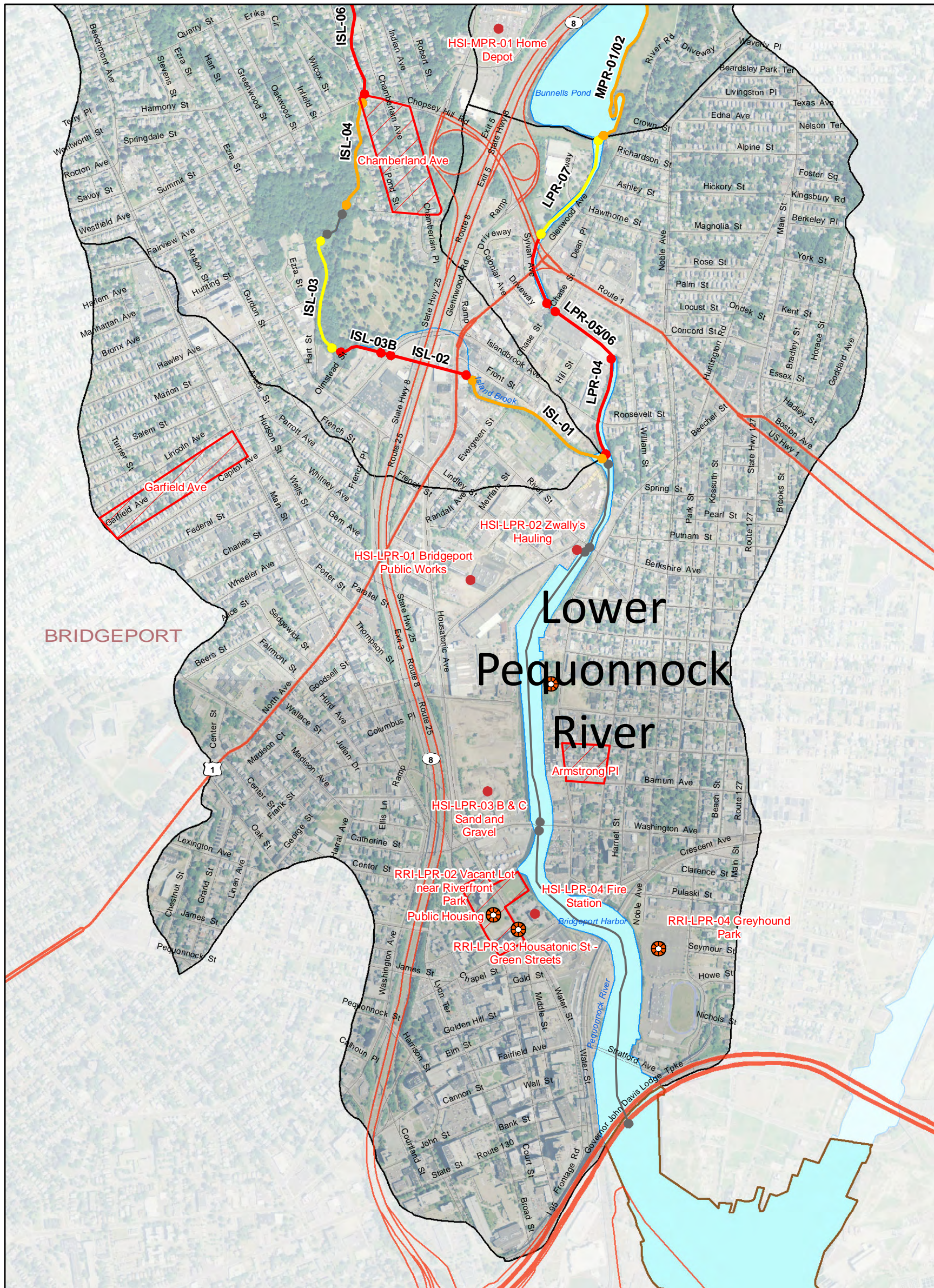
www.FandO.com



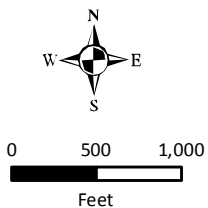
Field Assessments  
Lower Booth Hill Brook

PEQUONNOCK RIVER  
WATERSHED-BASED PLAN

MONROE, TRUMBULL, & BRIDGEPORT  
CONNECTICUT



Sources: Connecticut Environmental Conditions Online (CT ECO); Connecticut Department of Environmental Protection (CT DEP); University of Connecticut Center for Land Use Education and Research (CLEAR); USDA/NRCS - National Cartography & Geospatial Center, 12-Digit Watershed Boundary Data 1:24,000; City of Bridgeport, Town of Trumbull, Town of Monroe.



**Legend**

- Subwatershed
- Retrofit Opportunity
- Potential Hotspot
- Neighborhood Site Assessment
- Stream Reach Rating**
- Excellent
- Good
- Fair
- Marginal
- Poor
- Not Assessed

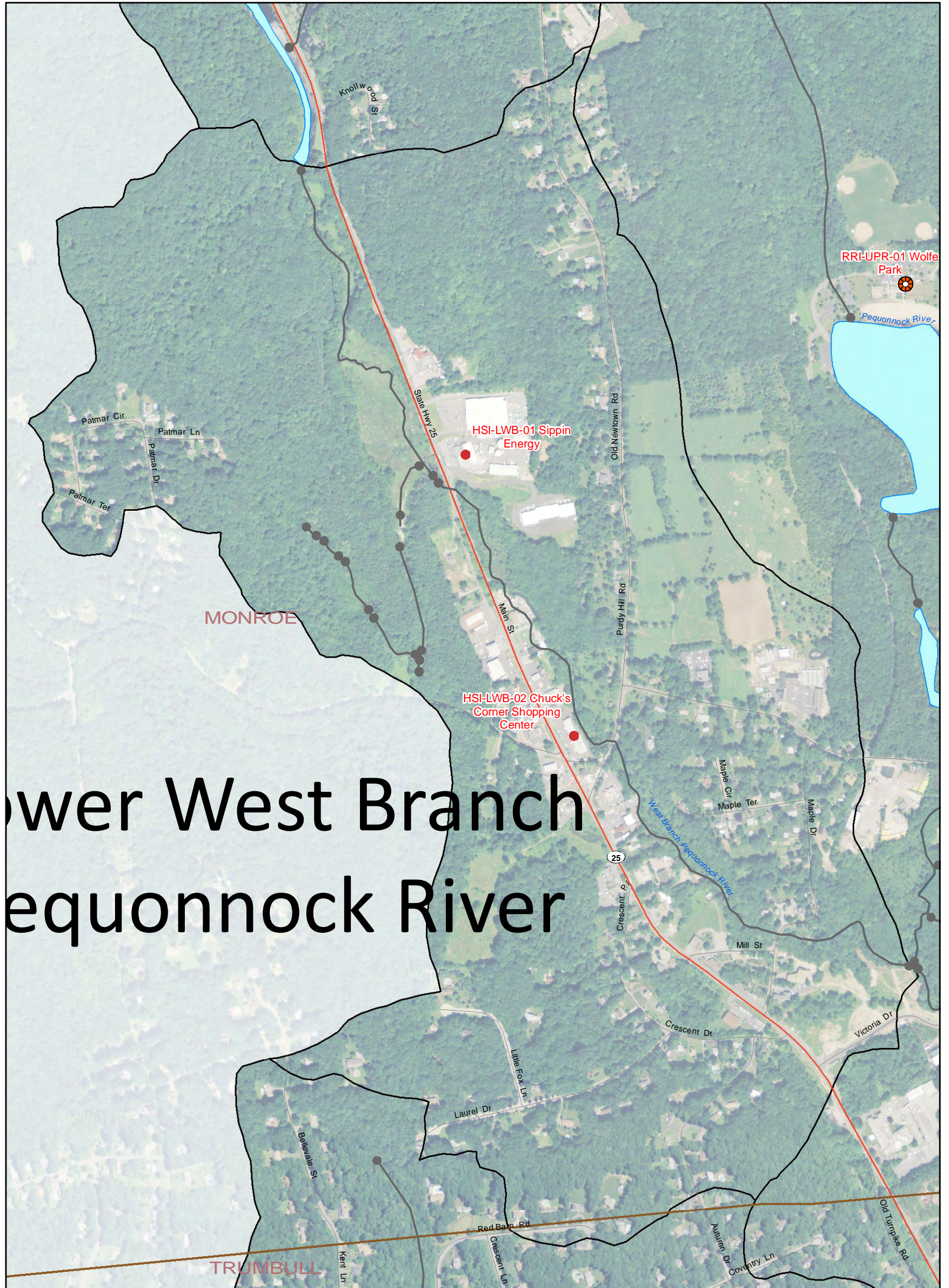
www.FandO.com



**Field Assessments  
Lower Pequonnock River**

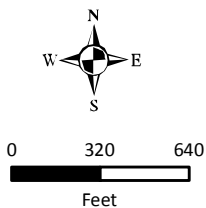
**PEQUONNOCK RIVER  
WATERSHED-BASED PLAN**

MONROE, TRUMBULL, & BRIDGEPORT  
CONNECTICUT



# Lower West Branch Pequonnock River

Sources: Connecticut Environmental Conditions Online (CT ECO); Connecticut Department of Environmental Protection (CT DEP); University of Connecticut Center for Land Use Education and Research (CLEAR); USDA/NRCS - National Cartography & Geospatial Center, 12-Digit Watershed Boundary Data 1:24,000; City of Bridgeport, Town of Trumbull, Town of Monroe.



### Legend

- |                              |           |              |
|------------------------------|-----------|--------------|
| Subwatershed                 | Excellent | Fair         |
| Retrofit Opportunity         | Good      | Marginal     |
| Potential Hotspot            | Poor      | Not Assessed |
| Neighborhood Site Assessment |           |              |

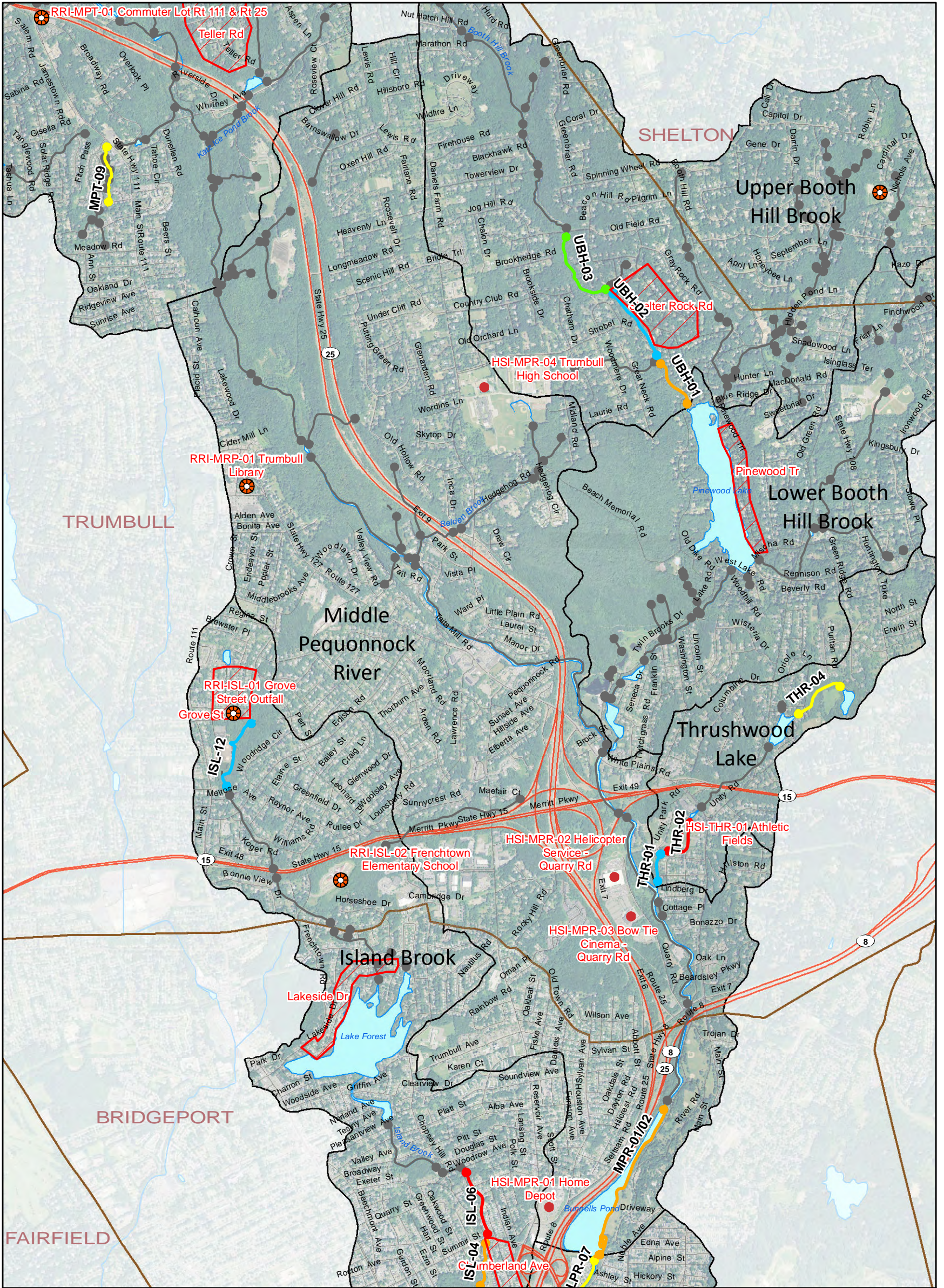
www.FandO.com



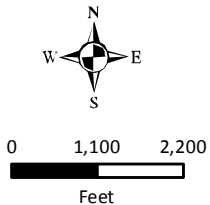
## Field Assessments Lower West Branch Pequonnock River

## PEQUONNOCK RIVER WATERSHED-BASED PLAN

MONROE, TRUMBULL, & BRIDGEPORT  
CONNECTICUT



Sources: Connecticut Environmental Conditions Online (CT ECO); Connecticut Department of Environmental Protection (CT DEP); University of Connecticut Center for Land Use Education and Research (CLEAR); USDA/NRCS - National Cartography & Geospatial Center, 12-Digit Watershed Boundary Data 1:24,000; City of Bridgeport, Town of Trumbull, Town of Monroe.



**Legend**

- Subwatershed
- Retrofit Opportunity
- Potential Hotspot
- Neighborhood Site Assessment
- Stream Reach Rating**
- Excellent
- Good
- Fair
- Marginal
- Poor
- Not Assessed

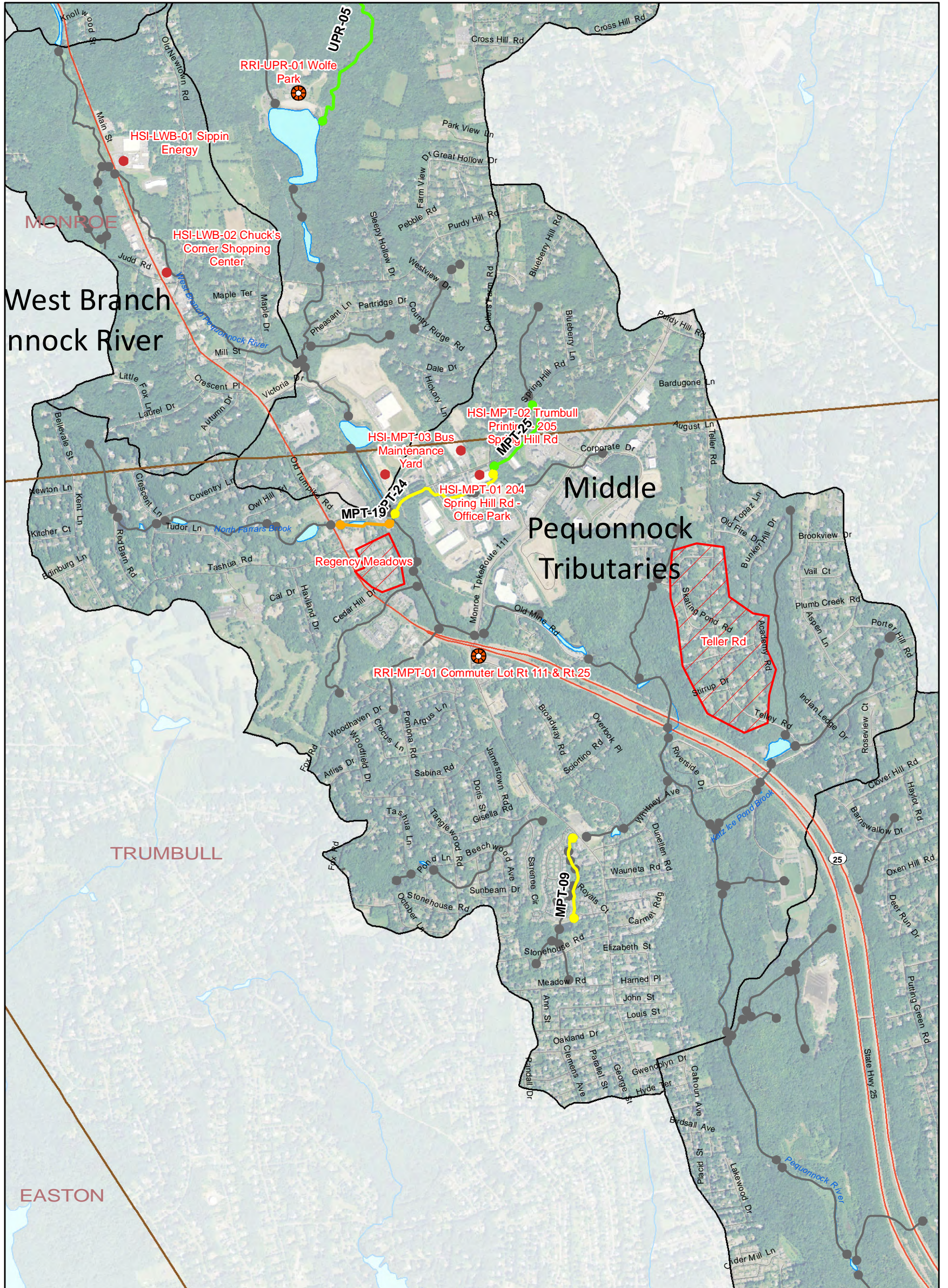
www.FandO.com



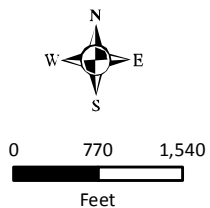
**Field Assessments  
Middle Pequonnock River**

**PEQUONNOCK RIVER  
WATERSHED-BASED PLAN**

MONROE, TRUMBULL, & BRIDGEPORT  
CONNECTICUT



Sources: Connecticut Environmental Conditions Online (CT ECO); Connecticut Department of Environmental Protection (CT DEP); University of Connecticut Center for Land Use Education and Research (CLEAR); USDA/NRCS - National Cartography & Geospatial Center, 12-Digit Watershed Boundary Data 1:24,000; City of Bridgeport, Town of Trumbull, Town of Monroe.



**Legend**

- Subwatershed
- Retrofit Opportunity
- Potential Hotspot
- Neighborhood Site Assessment
- Stream Reach Rating: Excellent
- Stream Reach Rating: Good
- Stream Reach Rating: Fair
- Stream Reach Rating: Marginal
- Stream Reach Rating: Poor
- Not Assessed

www.FandO.com

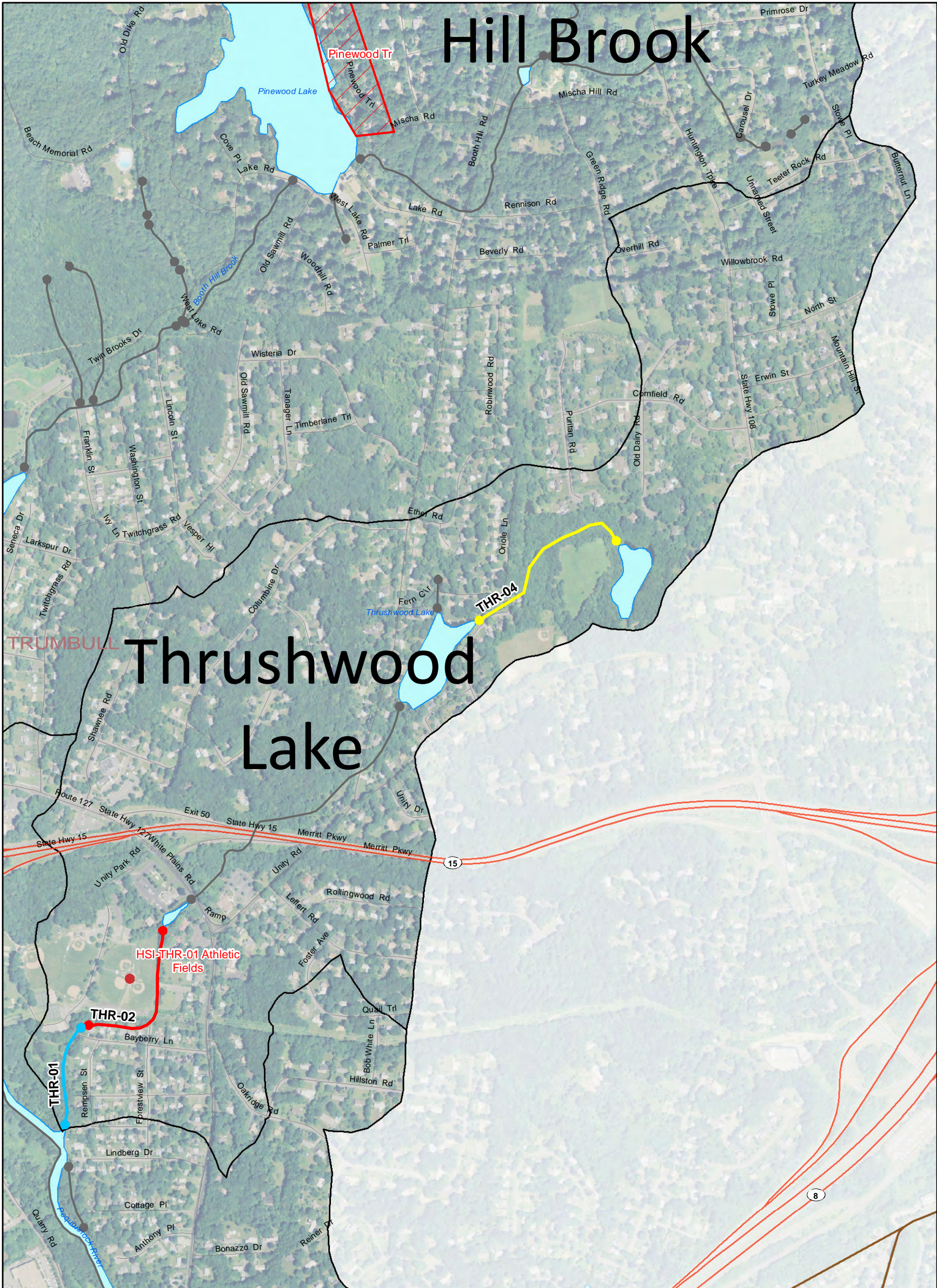


**Field Assessments  
Middle Pequonnock Tributaries**

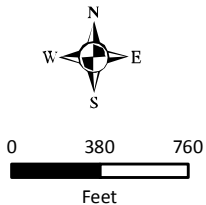
**PEQUONNOCK RIVER  
WATERSHED-BASED PLAN**

MONROE, TRUMBULL, & BRIDGEPORT  
CONNECTICUT

# Hill Brook



Sources: Connecticut Environmental Conditions Online (CT ECO); Connecticut Department of Environmental Protection (CT DEP); University of Connecticut Center for Land Use Education and Research (CLEAR); USDA/NRCS - National Cartography & Geospatial Center, 12-Digit Watershed Boundary Data 1:24,000; City of Bridgeport, Town of Trumbull, Town of Monroe.



### Legend

- Subwatershed
- Retrofit Opportunity
- Potential Hotspot
- Neighborhood Site Assessment
- Stream Reach Rating**
- Excellent
- Good
- Fair
- Marginal
- Poor
- Not Assessed

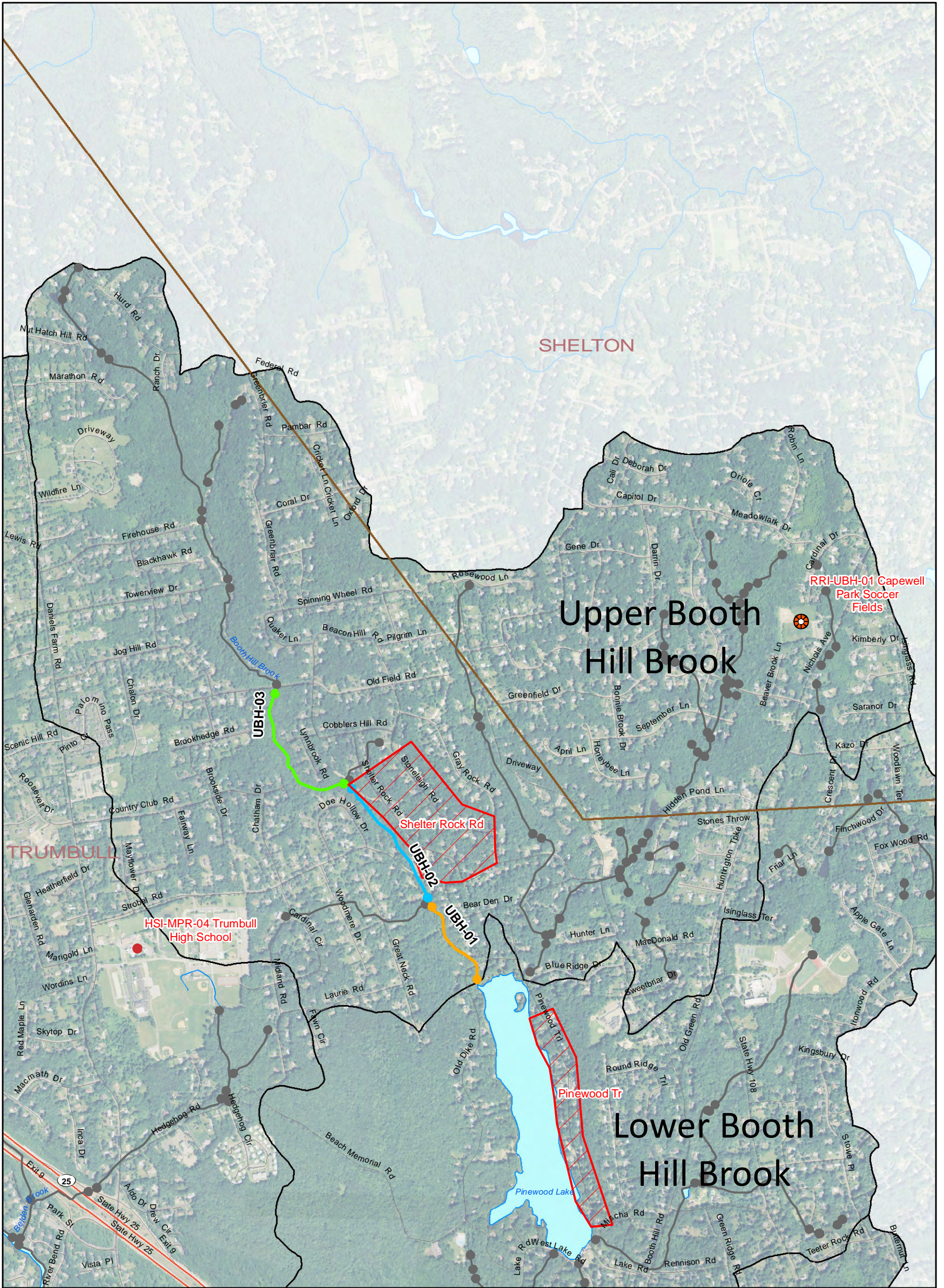
www.FandO.com



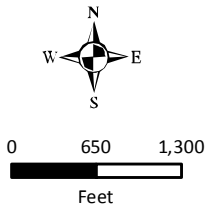
## Field Assessments Thrushwood Lake

## PEQUONNOCK RIVER WATERSHED-BASED PLAN

MONROE, TRUMBULL, & BRIDGEPORT  
CONNECTICUT



Sources: Connecticut Environmental Conditions Online (CT ECO); Connecticut Department of Environmental Protection (CT DEP); University of Connecticut Center for Land Use Education and Research (CLEAR); USDA/NRCS - National Cartography & Geospatial Center, 12-Digit Watershed Boundary Data 1:24,000; City of Bridgeport, Town of Trumbull, Town of Monroe.



**Legend**

- Subwatershed
- Retrofit Opportunity
- Potential Hotspot
- Neighborhood Site Assessment
- Stream Reach Rating**
- Excellent
- Good
- Fair
- Marginal
- Poor
- Not Assessed

www.FandO.com

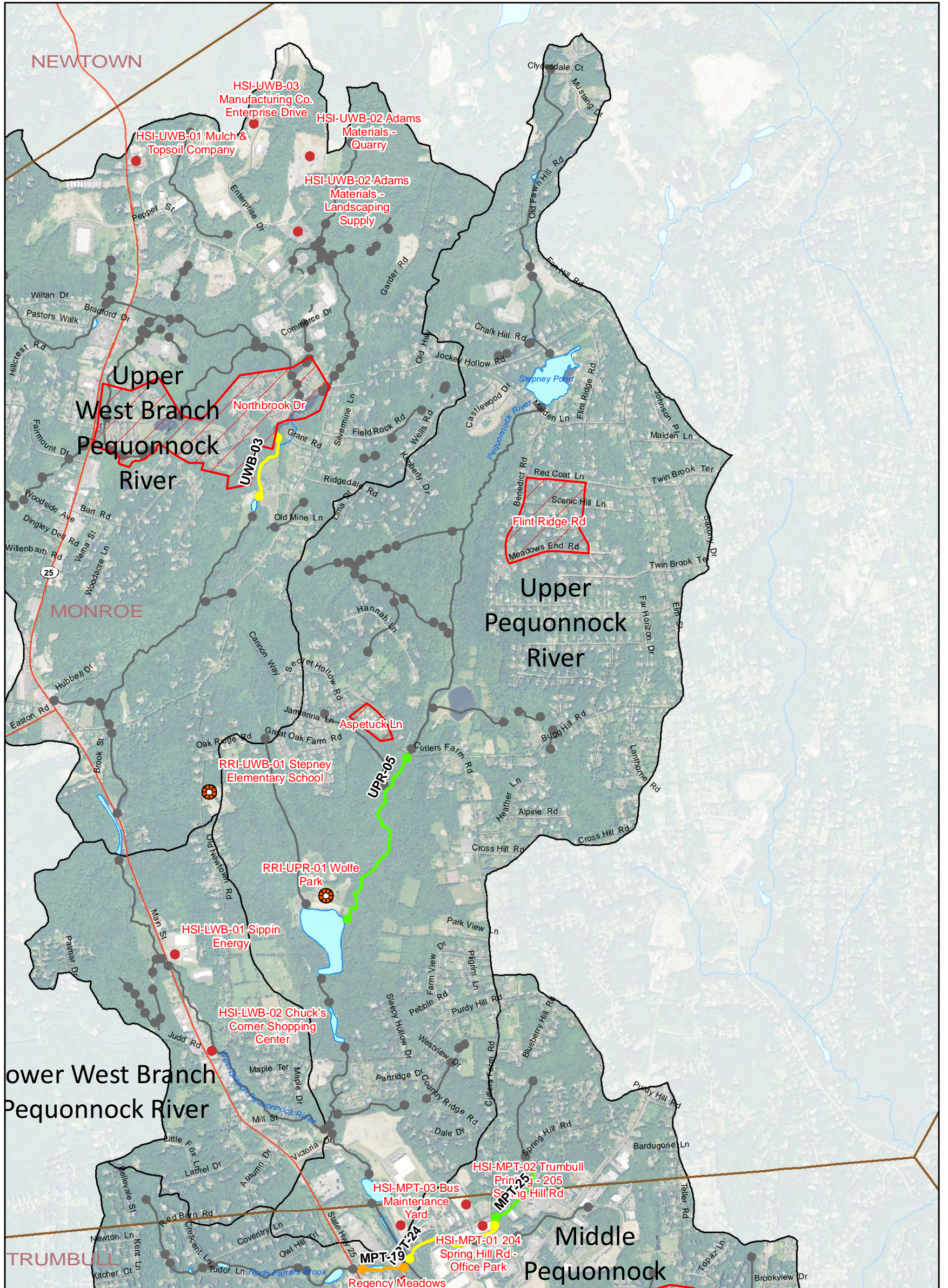


Field Assessments  
Upper Booth Hill Brook

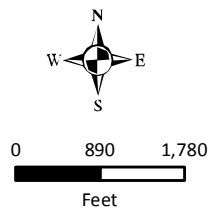
PEQUONNOCK RIVER  
WATERSHED-BASED PLAN

MONROE, TRUMBULL, & BRIDGEPORT  
CONNECTICUT





Sources: Connecticut Environmental Conditions Online (CT ECO); Connecticut Department of Environmental Protection (CT DEP); University of Connecticut Center for Land Use Education and Research (CLEAR); USDA/NRCS - National Cartography & Geospatial Center, 12-Digit Watershed Boundary Data 1:24,000; City of Bridgeport, Town of Trumbull, Town of Monroe.



**Legend**

- Subwatershed
- Retrofit Opportunity
- Potential Hotspot
- Neighborhood Site Assessment
- Stream Reach Rating**
- Excellent
- Good
- Fair
- Marginal
- Poor
- Not Assessed

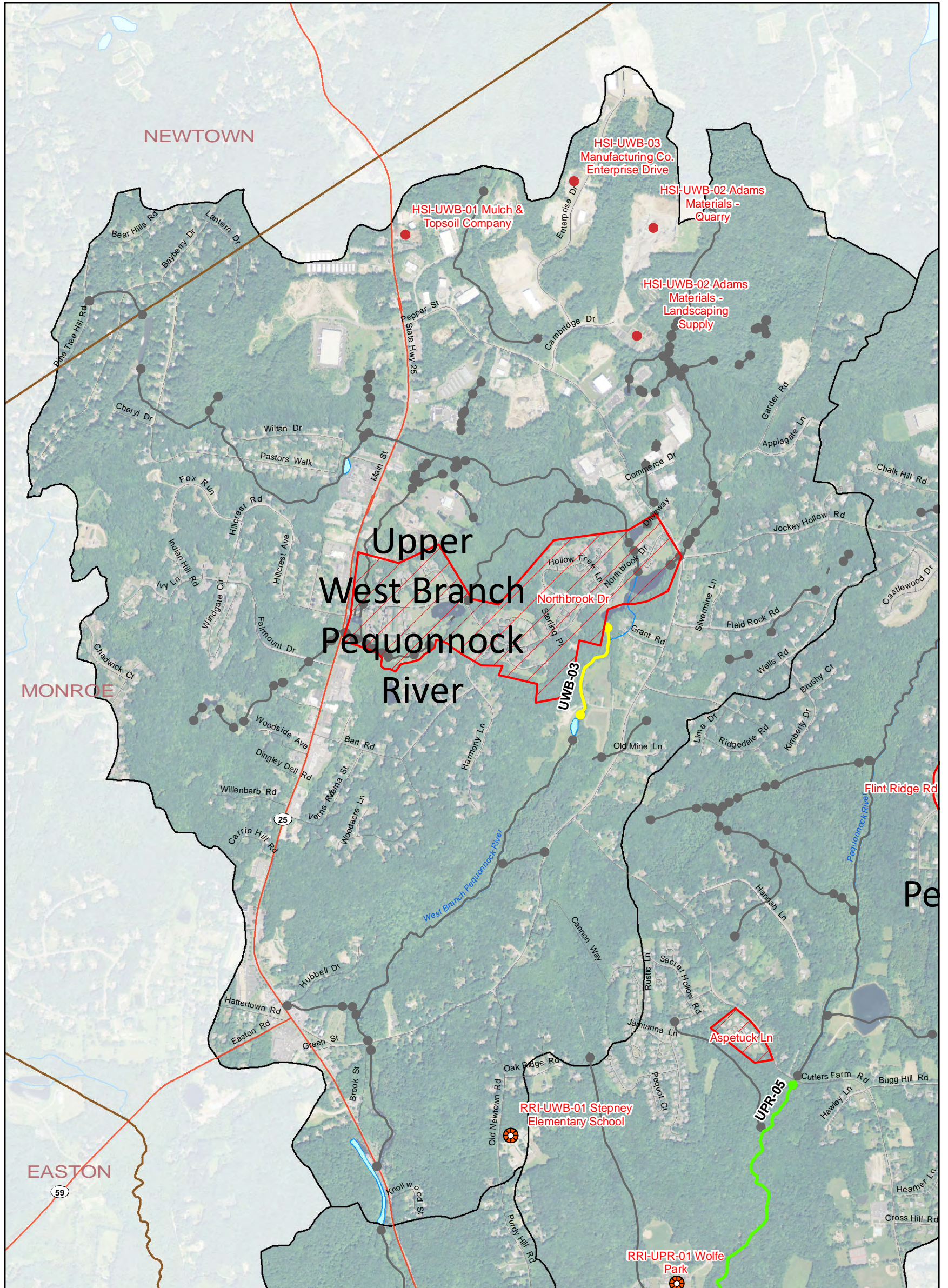
www.FandO.com



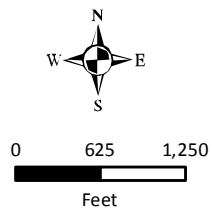
Field Assessments  
Upper Pequonnock River

PEQUONNOCK RIVER  
WATERSHED-BASED PLAN

MONROE, TRUMBULL, & BRIDGEPORT  
CONNECTICUT



Sources: Connecticut Environmental Conditions Online (CT ECO); Connecticut Department of Environmental Protection (CT DEP); University of Connecticut Center for Land Use Education and Research (CLEAR); USDA/NRCS - National Cartography & Geospatial Center, 12-Digit Watershed Boundary Data 1:24,000; City of Bridgeport, Town of Trumbull, Town of Monroe.



**Legend**

- Subwatershed
- Retrofit Opportunity
- Potential Hotspot
- Neighborhood Site Assessment
- Stream Reach Rating: Excellent
- Stream Reach Rating: Good
- Stream Reach Rating: Fair
- Stream Reach Rating: Marginal
- Stream Reach Rating: Poor
- Stream Reach Rating: Not Assessed

www.FandO.com



**Field Assessments**  
**Upper West Branch Pequonnock River**

**PEQUONNOCK RIVER**  
**WATERSHED-BASED PLAN**

MONROE, TRUMBULL, & BRIDGEPORT  
CONNECTICUT