

Integrated Water Resource Management

Taking Action to Restore and Protect Water Quality

An Integrated Approach

Connecticut is taking a new approach to restoring water quality in our rivers, streams, lakes, local harbors, and Long Island Sound. This enhanced approach, called **Integrated Water Resource Management**, will help focus state resources through a comprehensive review of information and by building on local partnerships to protect and restore water quality.



Figure 1. Healthy forest stream

Blueprint for Improved Waters

Under the federal Clean Water Act, Connecticut creates pollution reduction plans called Total Maximum Daily Loads (TMDLs) to restore and protect water quality. **A TMDL can be thought of as a water pollution budget or diet.** A TMDL is a type of water quality action plan. Waterbodies with poor water quality are over their budget and pollutants must be reduced to meet acceptable **water quality standards**. For waterbodies with good water quality, setting a budget maintains this good water quality. The long term goal for all waterbodies is to meet water quality standards for safe human use and a healthy aquatic environment.

Developing water quality action plans is not a new activity, however, the US

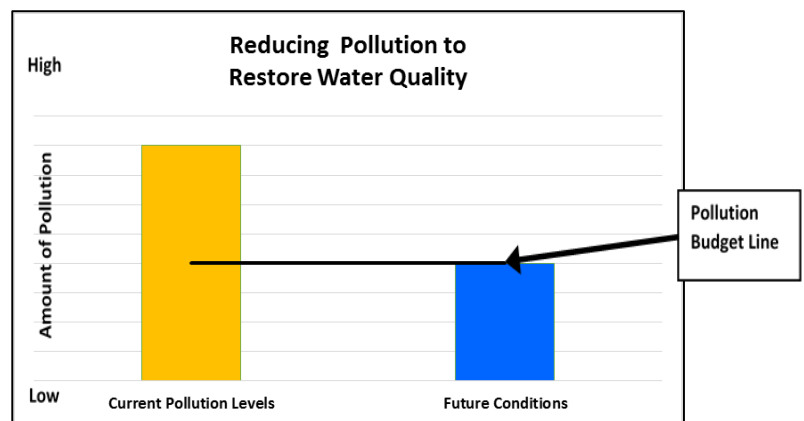


Figure 2. Poor water quality budget

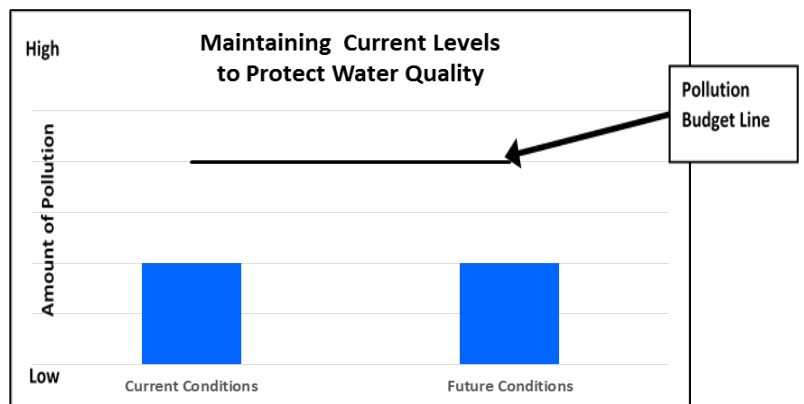


Figure 3. Good water quality budget

Environmental Protection Agency (USEPA) and the CT DEEP are taking a new approach to improve effectiveness.

These new actions to improve water quality include:

- **Reviewing information to choose waterbodies** with the most likely successful restoration potential
- **Focusing on certain water resource areas** while maintaining statewide water quality efforts
- **Identifying alternative action plans** that will lead to effective water quality improvement
- **Enhancing protection of high quality** water resources from pollution impacts
- **Building on existing partnerships**

Focus Waters

Integrated Water Resource Management includes identifying waterbodies (and their watersheds) for focused water quality efforts. CT DEEP is focusing on landscape features and pollutants that influence water quality. Additional focus is placed on aquatic resources and features of important value to the public (Figure 4).

CT DEEP used a practical approach to select waterbodies using ecological, stressor and social data. This approach resulted in a list of waterbodies with a high likelihood of restoring water quality. For each selected waterbody, an action plan (which could be a TMDL) will be developed to improve water quality and enhance water resources.

During the selection process many groups within CT DEEP worked together to review ecological conditions, social values, and existing management efforts. Priority data used to select waterbodies for focused efforts included:

- Ecological information showing the health of fish and other aquatic life
- Social values such as fishing, swimming, other recreation, and drinking water sources
- Types and sources of potential pollution such as industrial discharges and sewage treatment plants
- Land use conditions, amount of hard surfaces, and stormwater runoff
- Existing planning efforts within the watershed
- Existing and potential partnerships

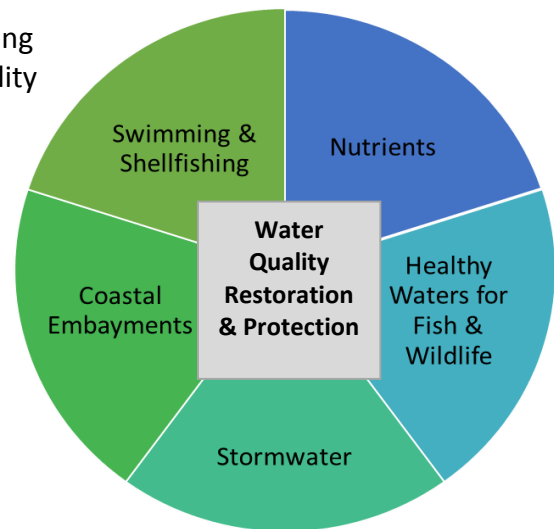


Figure 4. CT DEEP Water Quality Concerns



Figure 5. Children Fishing



Figure 6. Wastewater Treatment Facility

Further details on the process for selecting waters for action plan development can be found in a separate document: [Technical Support Document: Identifying Watershed for Restoration and Protection Plans with Connecticut Integrated Water Resource Management Efforts.](#)

Public Review, How to Get Involved

An initial map of proposed waters for action plan development is open for public review and comment (See Figure 8). Comments are welcome on these waters, other locations, or water resource information for consideration by CT DEEP. The Department is particularly interested in working with partners who have additional plans or data to help achieve water quality improvements.

Public comments will be collected from **May 27, 2016, through June 30, 2016**. Two public meetings will be held on **June 20th**. The first session will be held at **CT DEEP HQ, 79 Elm ST, Hartford, CT in the Gina McCarthy Auditorium from 1:30 to 3:30 p.m.** A second session will be held at **Goodwin College, One Riverside Drive, East Hartford, CT 06118 in the Auditorium from 6:00 to 8:00 in the evening.** These events will feature a presentation on the Integrated Water Resource Management process and identification of potential waters for development of water quality action plans. Interested people are invited to attend and participate in the session. Written comments may be submitted through email or regular mail by **June 30, 2016**. Email comments should be submitted to: christopher.sullivan@ct.gov, written comments may also be submitted to CTDEEP WPLR 79 Elm Street Hartford CT 06106 Attn: Mr. Christopher Sullivan, Planning and Standards Division.

Learn More

All reports and documents can be downloaded from the CT DEEP [TMDL website](#). A Story Map is available that provides an interactive format for interested people to further understand the how the waters were selected for action plan development. There is also mapping tools available at this location for further investigating the information available in each of the current preliminary list of waterbodies.

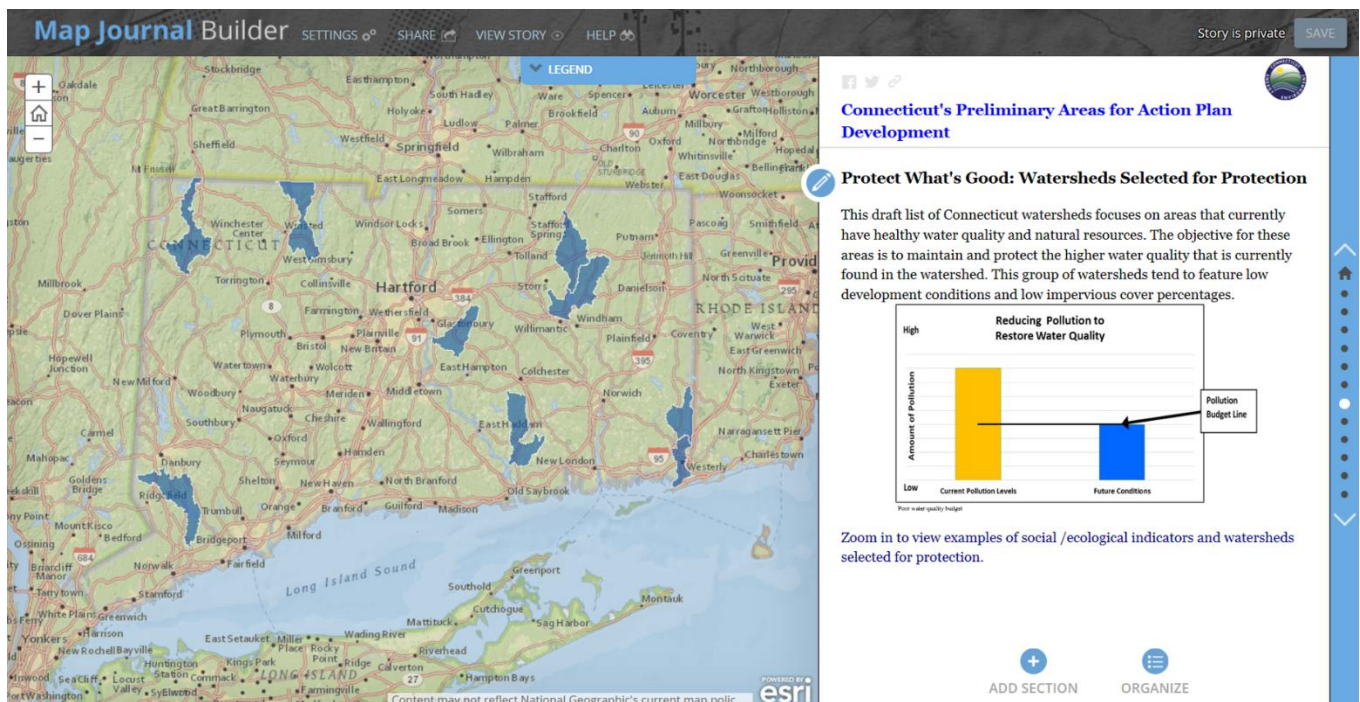


Figure 7. Story Map Screen of Protection Watersheds

CT DEEP Preliminary Waters for Action Plan Development

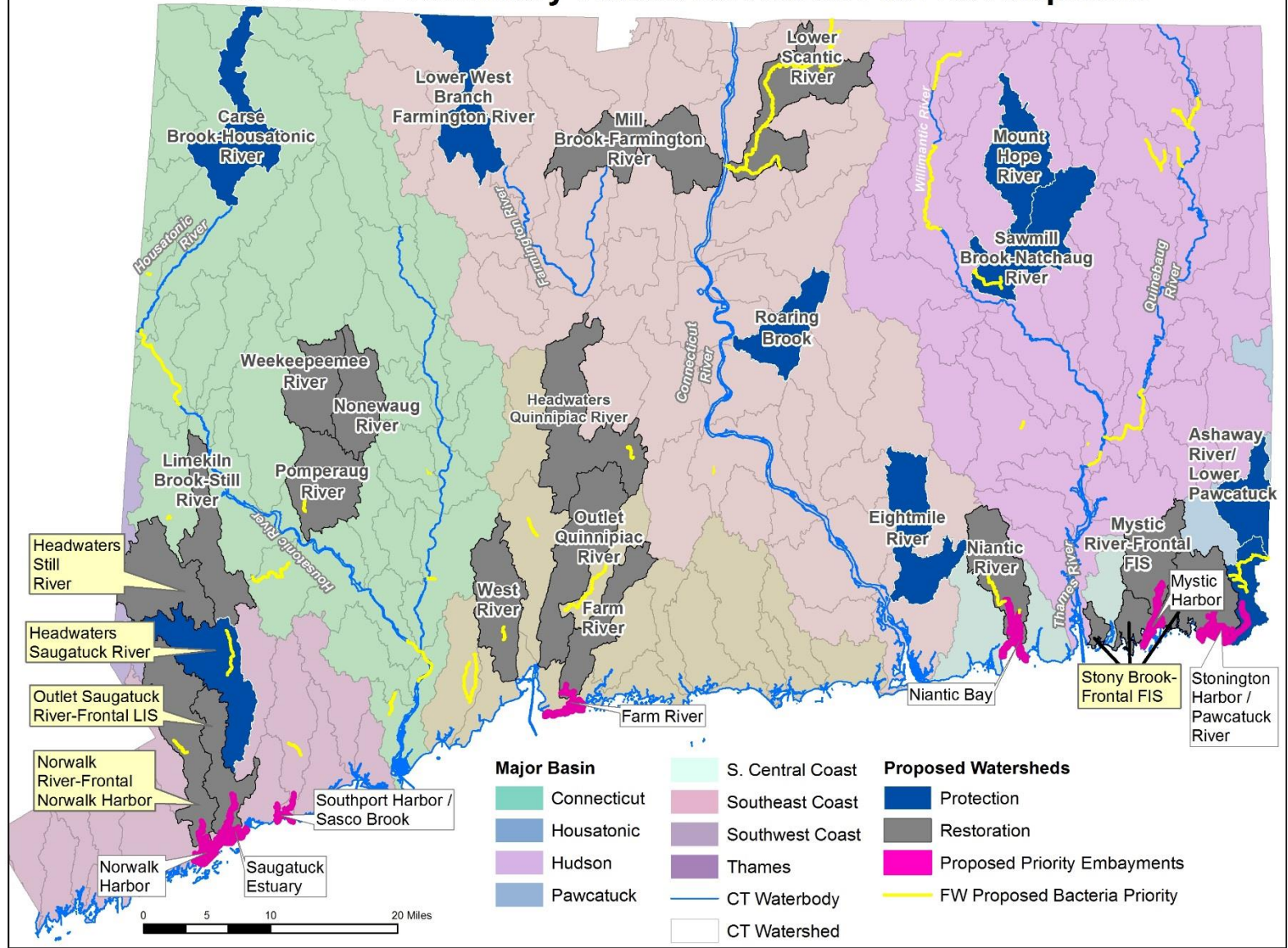


Figure 8. CT DEEP Preliminary Waters for Action Plan Development