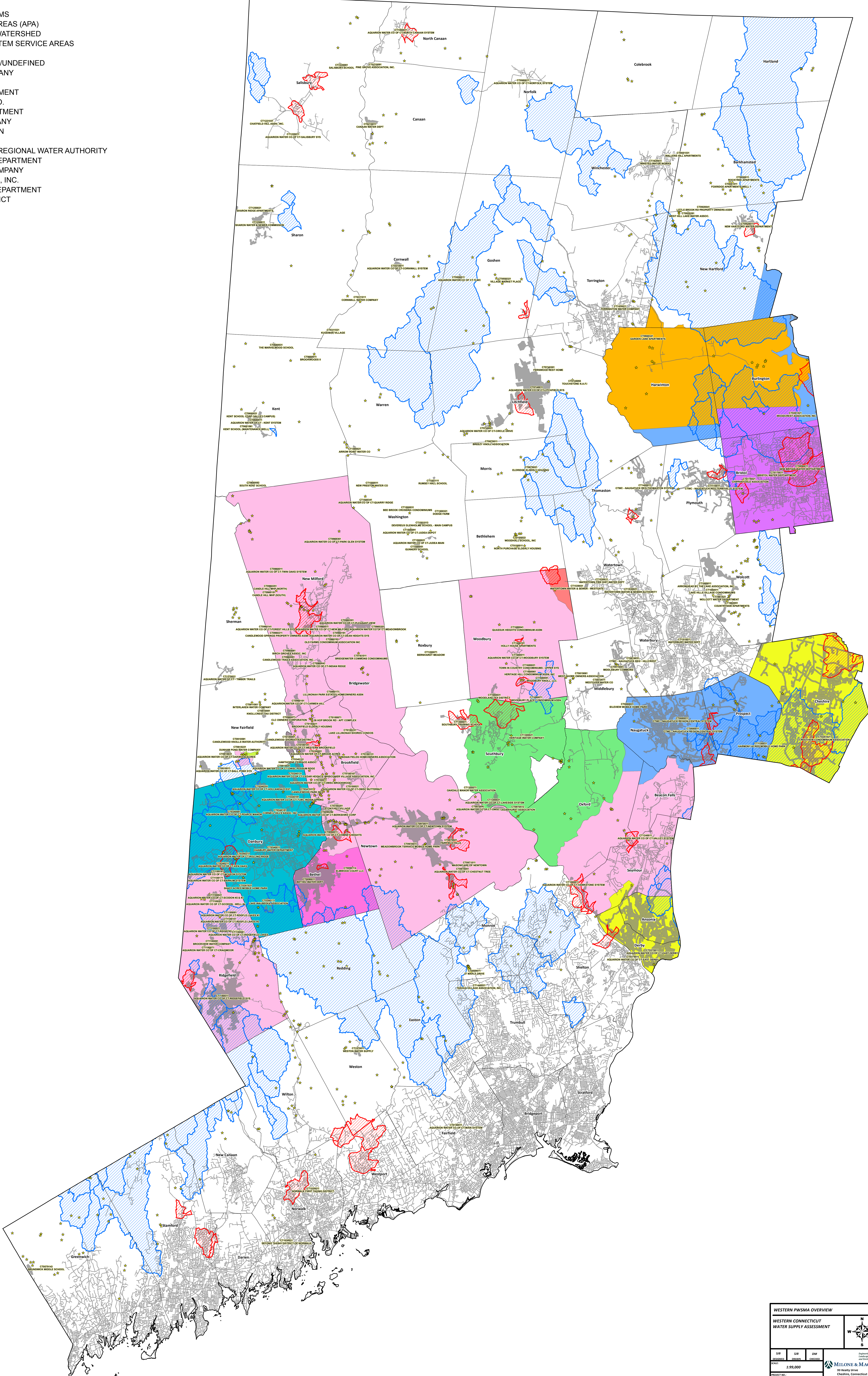


- LEGEND**
- \* NON-COMMUNITY SYSTEMS
  - AQUIFER PROTECTION AREAS (APA)
  - PUBLIC WATER SUPPLY WATERSHED
  - COMMUNITY WATER SYSTEM SERVICE AREAS
  - EXCLUSIVE SERVICE AREA**
  - EXCLUSIVE UNASSIGNED/UNDEFINED
  - AQUARION WATER COMPANY
  - BETHEL WATER DEPT
  - BRISTOL WATER DEPARTMENT
  - CONNECTICUT WATER CO.
  - DANBURY WATER DEPARTMENT
  - HERITAGE WATER COMPANY
  - MERIDEN WATER DIVISION
  - NEW FAIRFIELD WPCA
  - SOUTH CENTRAL CONN. REGIONAL WATER AUTHORITY
  - SOUTHTON WATER DEPARTMENT
  - TORRINGTON WATER COMPANY
  - VALLEY WATER SYSTEMS, INC.
  - WALLINGFORD WATER DEPARTMENT
  - WATERTOWN FIRE DISTRICT



WESTERN PWSMA OVERVIEW		COUNTY	
WESTERN CONNECTICUT WATER SUPPLY ASSESSMENT		CT DPH, CT DEEP	
		DATE	
		October 21, 2016	
SDR 1:99,000 PROJECT NO: 1027-02-02	SUB 1:99,000 PROJECT NO: 1027-02-02	DM 1:99,000 PROJECT NO: 1027-02-02	DATE October 21, 2016 DRAWN BY J. MILONE & M. MACBROOM 99 Healy Drive Cheshire, Connecticut 06040 (860) 371-1773 Fax: (860) 371-9393 www.miloneandmacbroom.com
			APPENDED FIGURE 2