

Watertown Renewable Power



**CTDEP Solid Waste Management Advisory Committee
Organics Subcommittee**

October 24, 2007



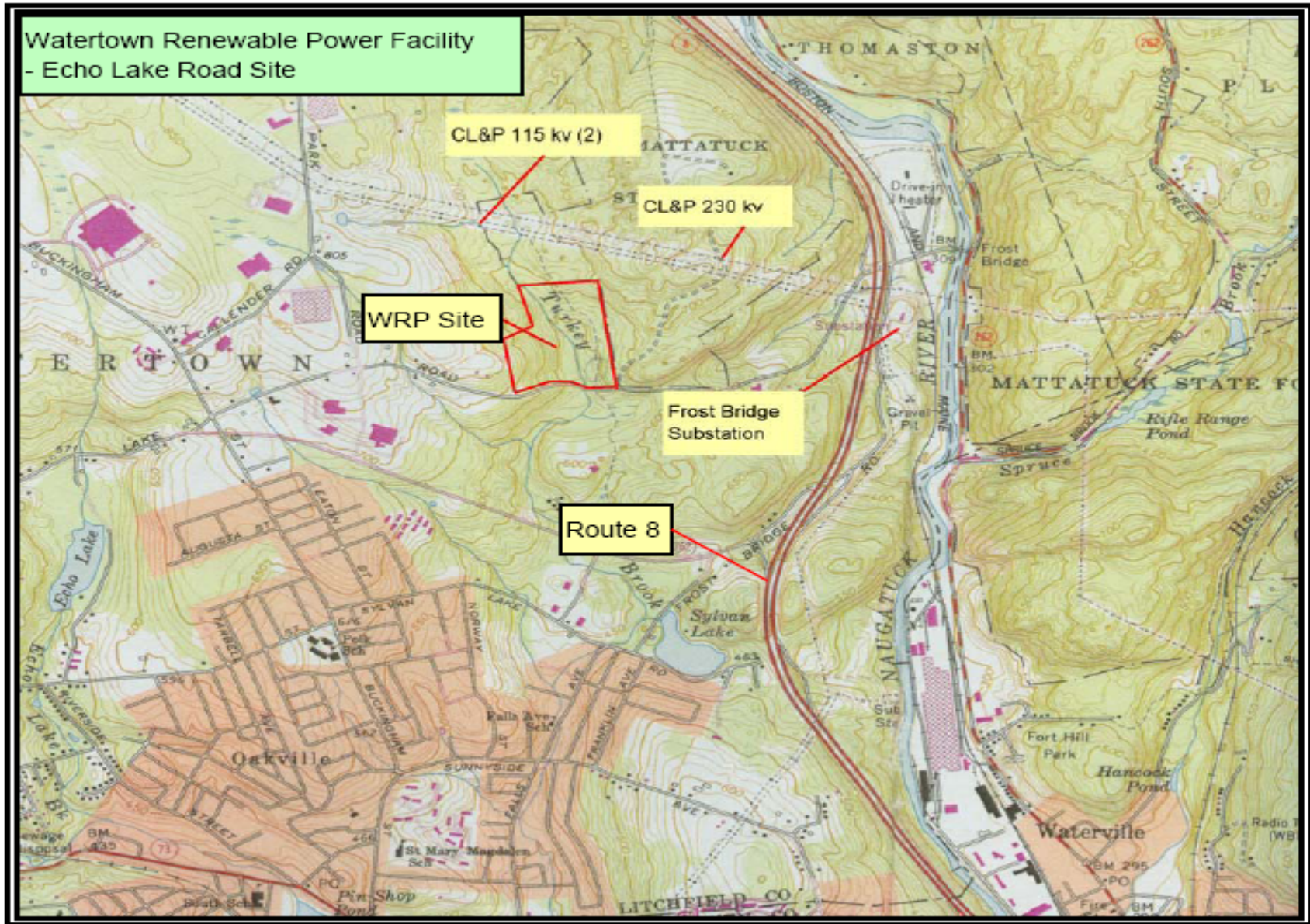
Project Contacts

Mark Mirabito
Project Manager

William Carter
Managing Director

Tamarack Energy, Inc.
35 Pratt Street, Suite 101
Essex, CT 06426
860.767.6890
www.TamarackEnergy.com

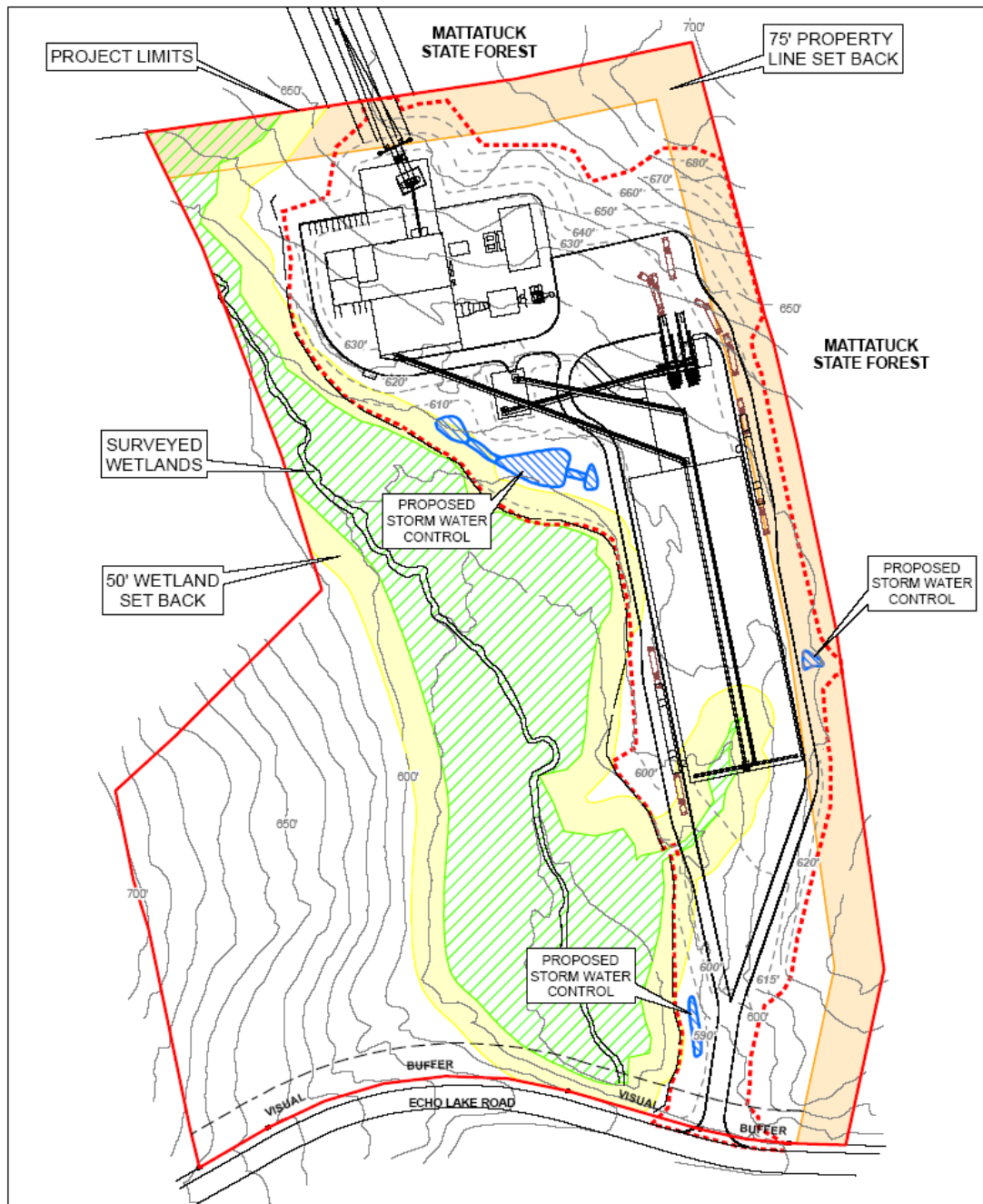
Site Locus Map



Project Background / Highlights

- 30 MW clean wood biomass facility in Watertown, the first large-scale biomass power facility in CT
- 33-acre, industrial-zoned greenfield site with favorable transmission and transportation access
- Located within transmission constrained, southwest CT
- State-of-the-art fluidized bed gasification system
- Only successful project from Project 100, Round 1
- 15-year EPA recommended by CCEF, approved by DPUC, and executed with CL&P
- Positive, welcoming response from local government and community leaders
- Qualified as a Class I Renewable Energy Source for “fuel cultivated and harvested in a sustainable manner and NO_x emissions less than 0.075 lb/mmBtu”

Planned Site Layout



Wood Fuel Supply

■ Fuel Types

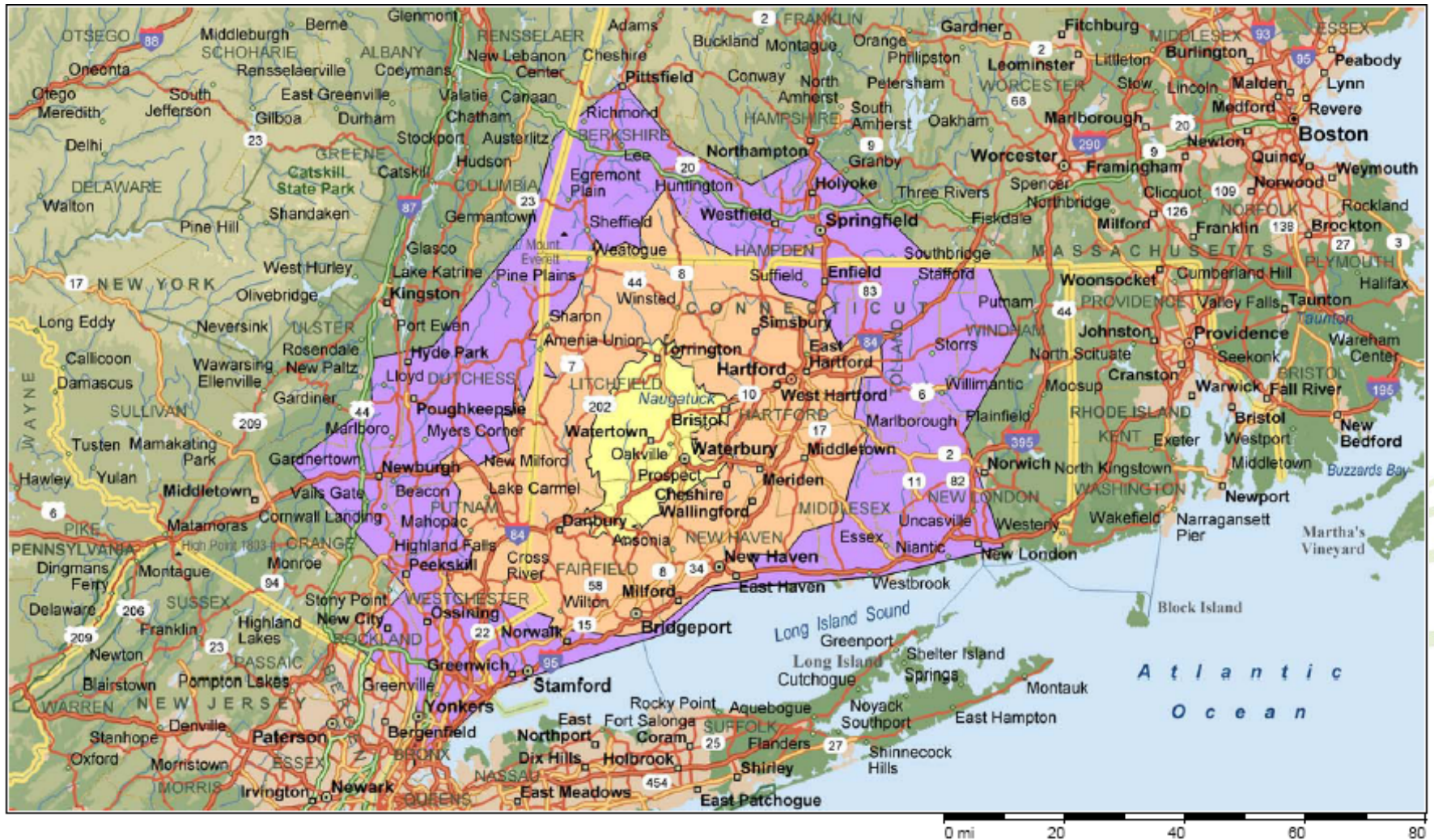
- Whole tree chips – low quality material obtained from timber harvesting and timber stand improvements
- Pallet waste – broken shipping pallets chipped, with nails removed
- Urban wood waste – source separated, untreated wood including brush, branches, stumps, and yard trimmings
- Mill residue – waste sawdust, bark, and slab wood generated by a sawmill

■ No painted or treated wood will be accepted

- The above fuel types satisfy the requirements for Class I Renewable Energy Sources in CT and the requirements for Federal Production Tax Credits

Wood Fuel Supply

- Watertown, CT – 30, 60 and 90 Minute Drive Times



Wood Fuel Supply

- Project fuel requirements: 310,000 tons per year with average moisture content of 40%
- Several independent studies (Antares, CCEF) indicate 500,000 – 1,000,000 tons per year clean wood waste is currently generated and available in CT
- Approximately 2,000,000 tons of clean wood could be harvested sustainably each year from CT's 1.7 million acres of accessible timberland (USDA)
- Project-specific study by established wood fuel supplier confirms that sufficient wood fuel is available within a reasonable radius of Watertown
- Waste wood is often left to decay in the forest, at a landfill, or on the side of the road, naturally producing carbon dioxide and methane – two greenhouse gases that are primary contributors to global warming

Visual Impact

(View from Northeast)

