

Copyright: © 2013 National Geographic Society, i-cubed

Legend

 Project Location



0 750 1,500 3,000 4,500
 Feet

16C5921
 Shore Avenue
 Sea Wall Replacement
 Groton, CT 06340



Architecture
 Engineering
 Environmental
 Land Surveying
 Companies

Figure 1
Topographic Location Map




Source: Esri, DigitalGlobe, GeoEye, Earthstar Geographics, CNES/Airbus DS, USDA, USGS, AEX, Getmapping, Aerogrid, IGN, IGP, swisstopo, and the GIS User Community

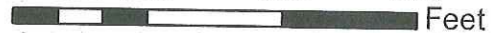
Legend

 Project Location

N



0 150 300 600 900



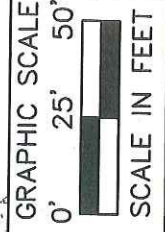
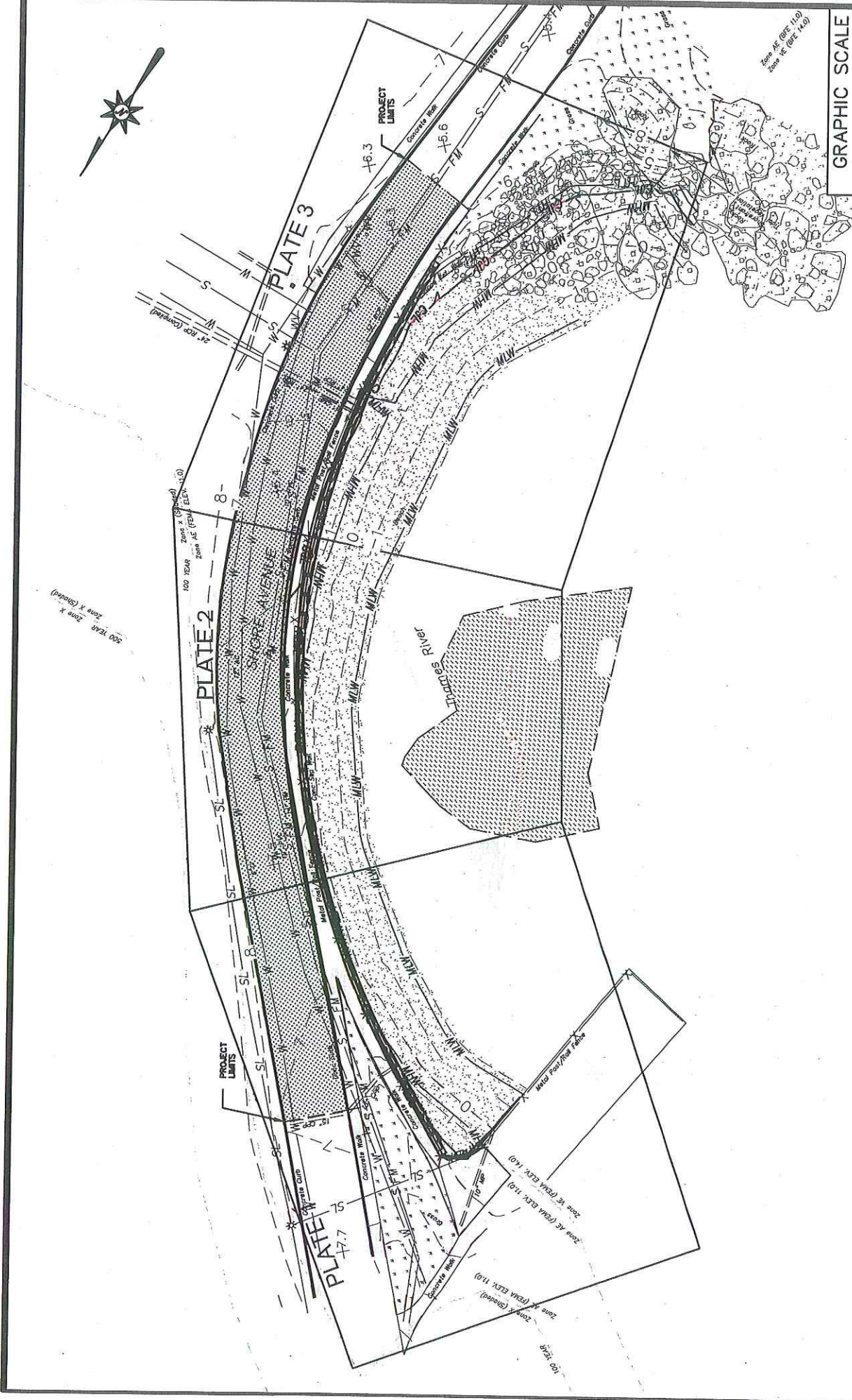
Feet

16C5921
Shore Avenue
Sea Wall Replacement
Groton, CT 06340



Architecture
Engineering
Environmental
Land Surveying

Figure 2
Aerial Location Map



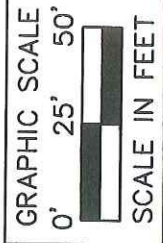
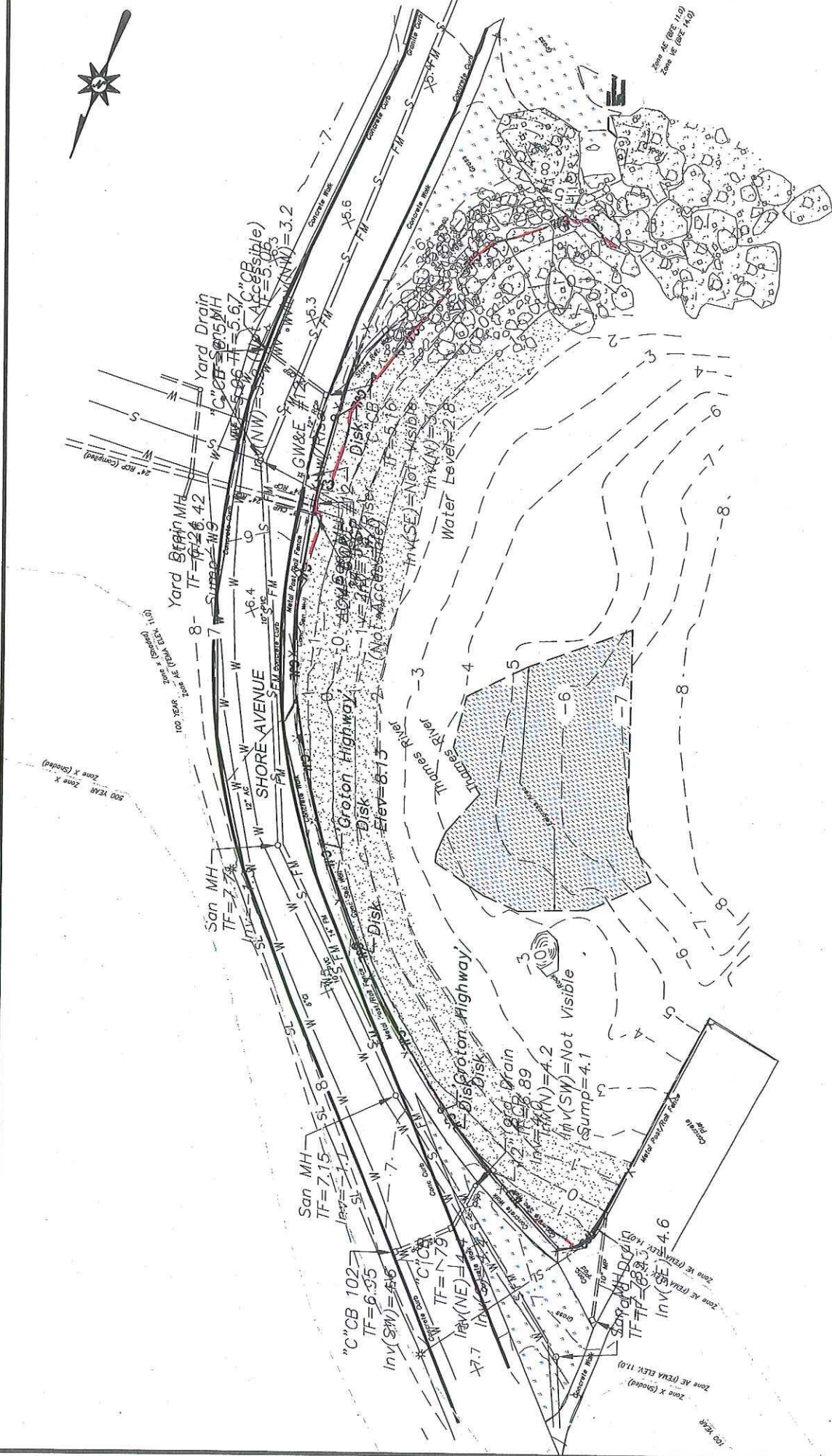
[Hatched Box] CONCRETE WALK
 [Dotted Box] BEACH
 [Stippled Box] ROCKY SHOREFRONT/ TIDAL VEGETATION HTL=2.7' MHW=0.8'
 [Cross-hatched Box] GRASSY AREA CJL=2.1' MLW=-1.8'

CITY OF GROTON
 ENGINEERING DEPARTMENT

INDEX PLAN-1

NAVD 1988 DATUM
 SEPTEMBER 2019

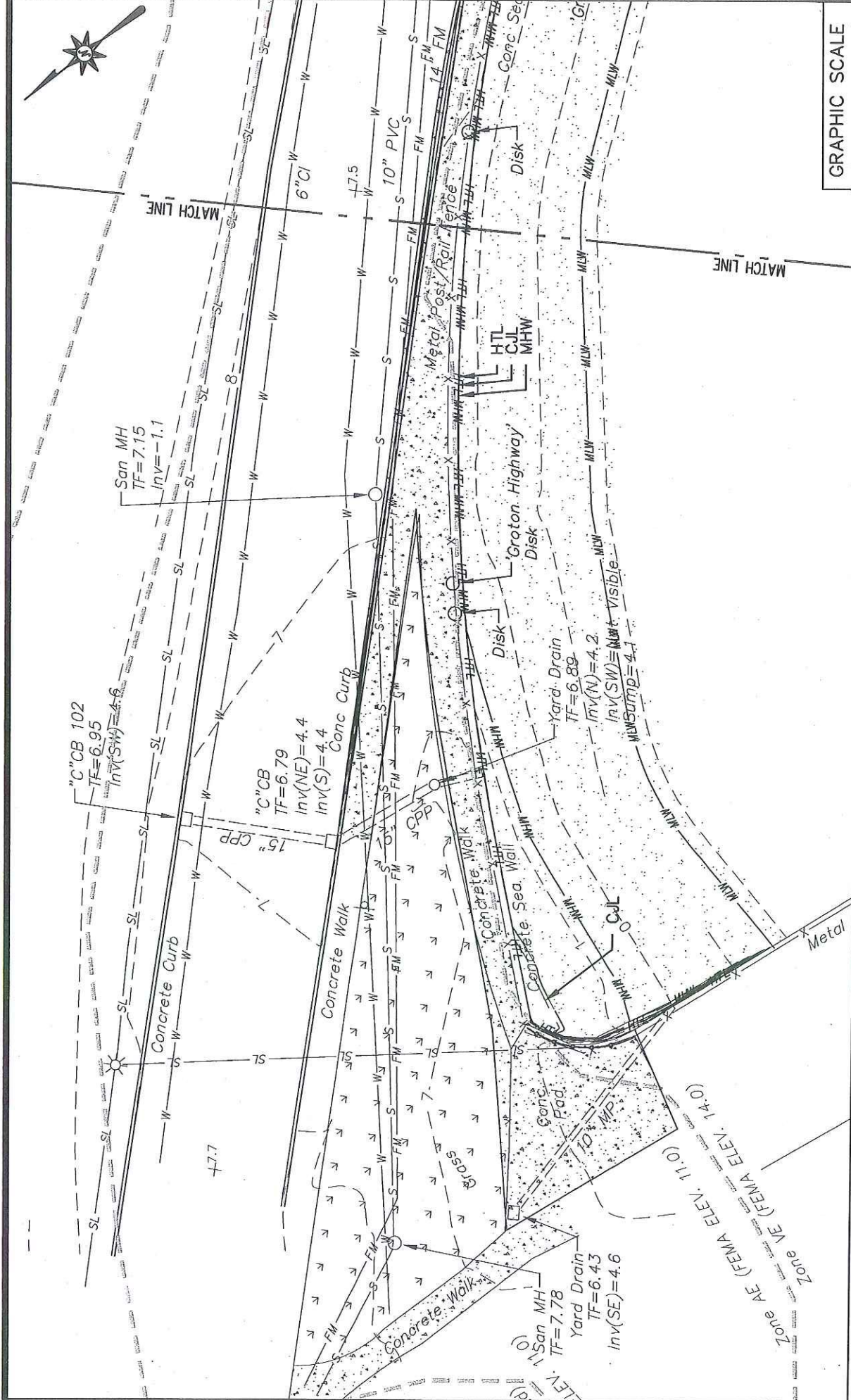
SHORE AVENUE SEA WALL REPLACEMENT
 GROTON, CT



[Symbol] CONCRETE WALK [Symbol] ROCKY SHOREFRONT/ TIDAL VEGETATION [Symbol] EELGRASS AREA HTL=2.7' MHW=0.8'
 [Symbol] BEACH [Symbol] GRASSY AREA CJL=2.1' MLW=-1.8'

CITY OF GROTON
 ENGINEERING DEPARTMENT
 NAVD 1988 DATUM
 SEPTEMBER 2019

EXISTING CONDITIONS
 SHORE AVENUE SEA WALL REPLACEMENT
 GROTON, CT



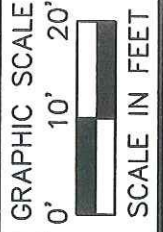
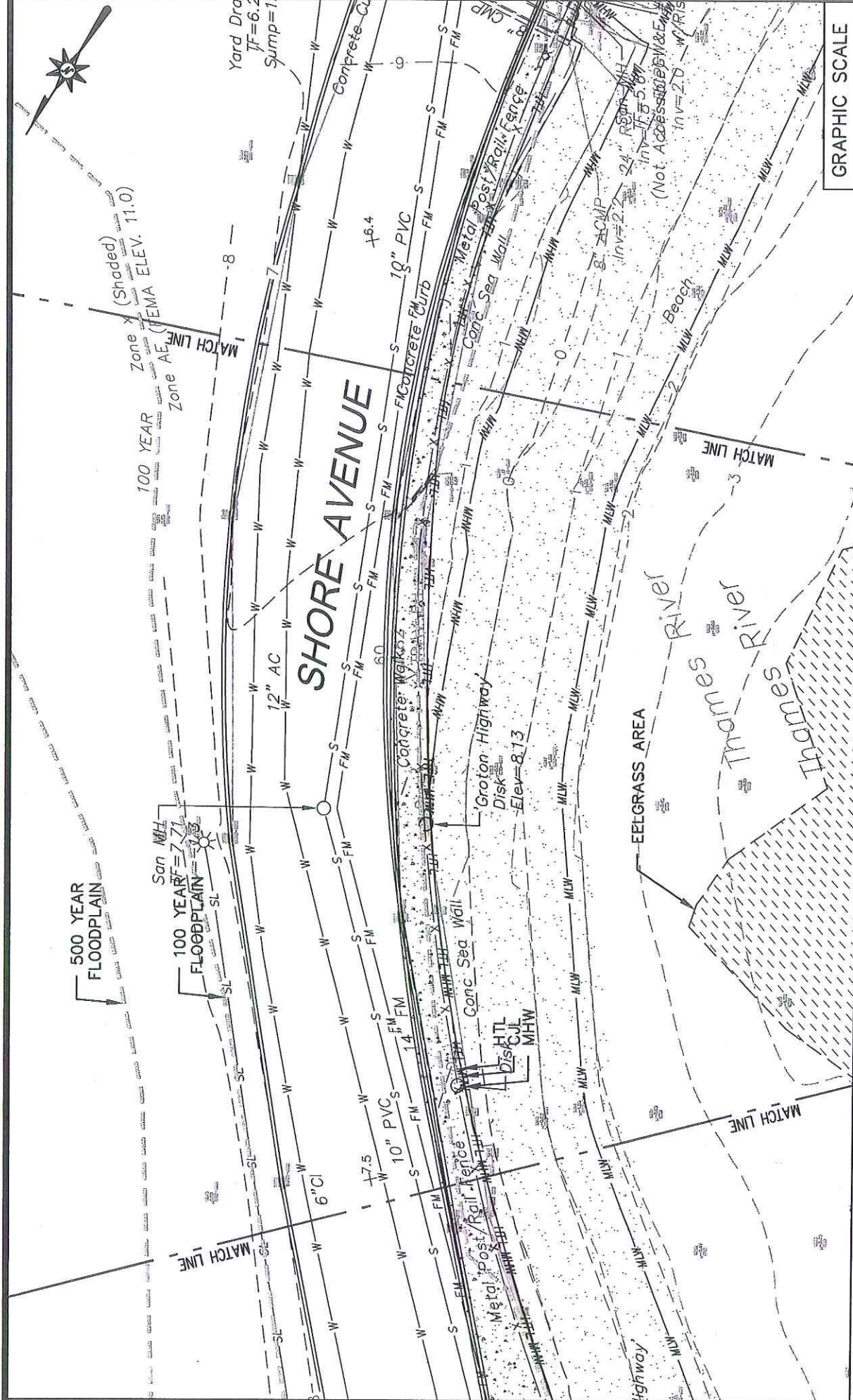
HTL=2.7' MHW=0.8'
 CJL=2.1' MLW=-1.8'

- ROCKY SHOREFRONT/TIDAL VEGETATION
- GRASSY AREA
- EELGRASS AREA

- CONCRETE WALK
- BEACH

1 EXISTING PLATE 1
 SCALE: 1"=20'

CITY OF GROTON ENGINEERING DEPARTMENT	EXISTING CONDITIONS-1
NAVD 1988 DATUM SEPTEMBER 2019	SHORE AVENUE SEA WALL REPLACEMENT GROTON, CT



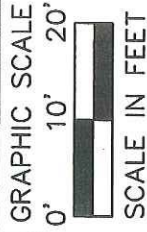
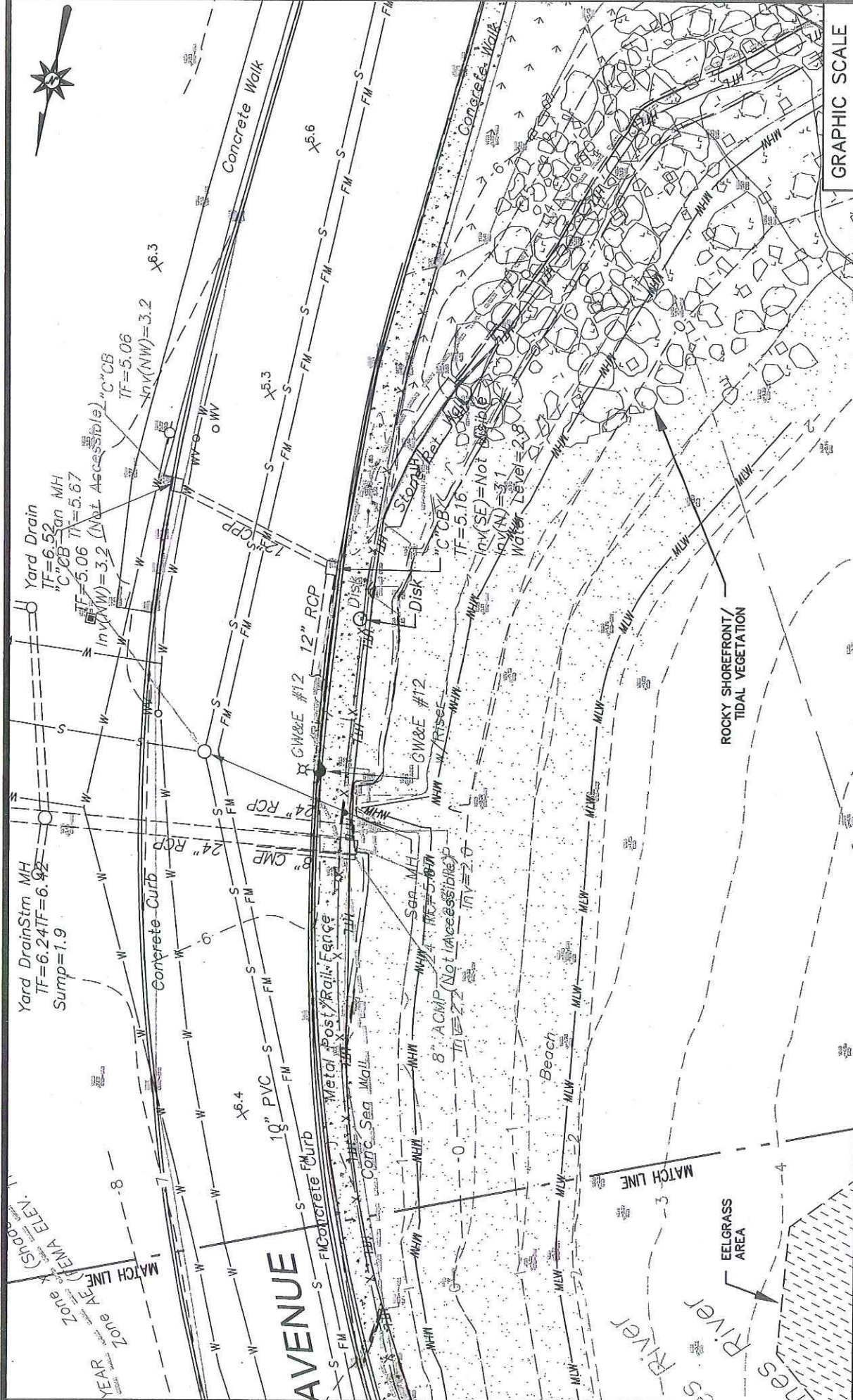
HTL=2.7' MHW=0.8'
CJL=2.1' MLW=-1.8'

- ROCKY SHOREFRONT/TIDAL VEGETATION
- ▨ GRASSY AREA
- ▩ EELGRASS AREA

- ① EXISTING PLATE 2
- ▨ CONCRETE WALK
- ▩ BEACH

SCALE: 1"=20'

<p>CITY OF GROTON ENGINEERING DEPARTMENT</p>	<p>EXISTING CONDITIONS-2</p>
<p>NAVD 1988 DATUM SEPTEMBER 2019</p>	<p>SHORE AVENUE SEA WALL REPLACEMENT GROTON, CT</p>



HTL=2.7' MHW=0.8'
 CJL=2.1' MLW=-1.8'

ROCKY SHOREFRONT/TIDAL VEGETATION
 GRASSY AREA
 EELGRASS AREA

CONCRETE WALK
 BEACH

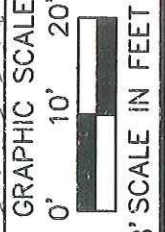
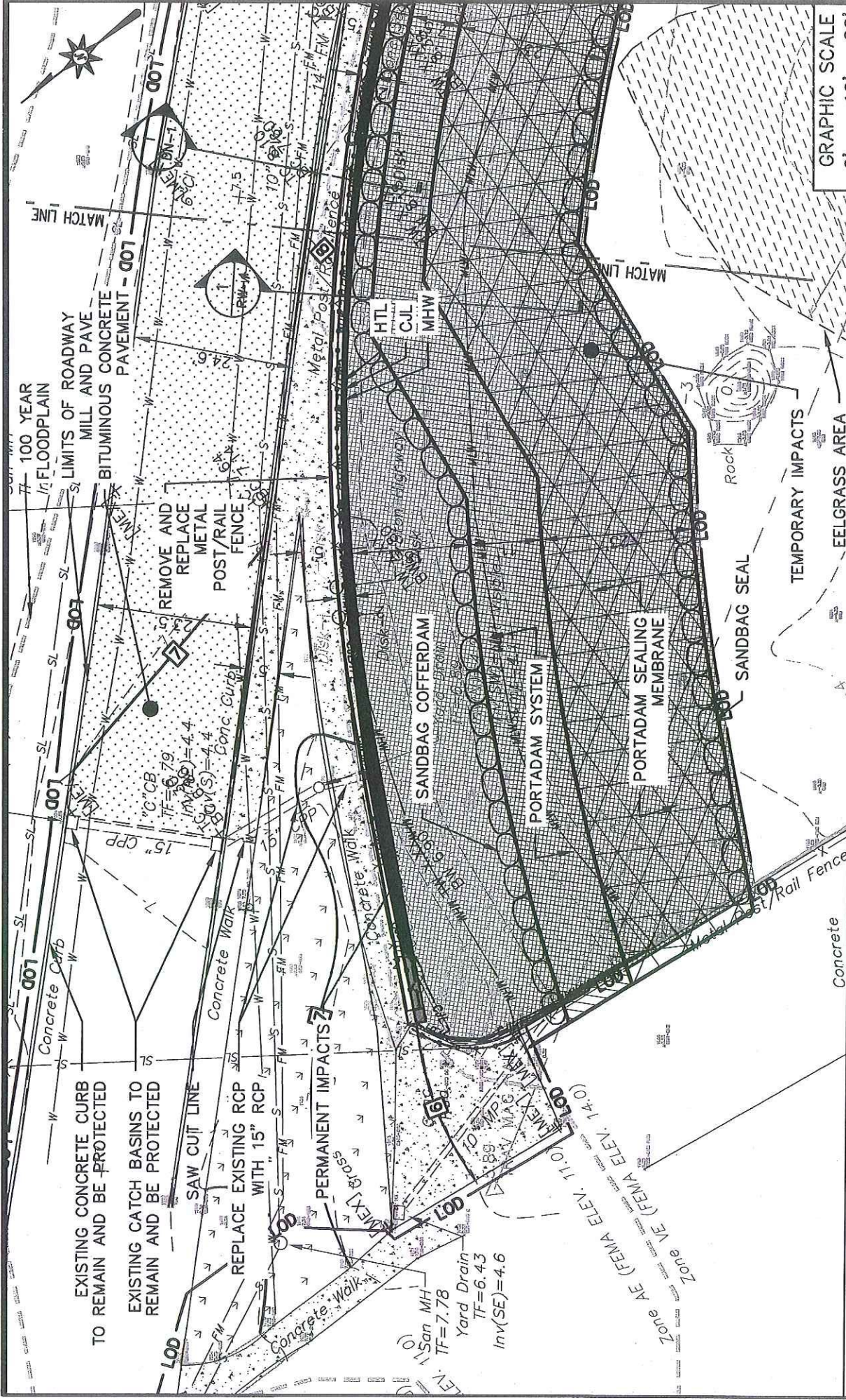
EXISTING PLATE 3
 SCALE: 1"=20'

CITY OF GROTON
 ENGINEERING DEPARTMENT

NAVD 1988 DATUM
 SEPTEMBER 2019

EXISTING CONDITIONS-3

SHORE AVENUE SEA WALL REPLACEMENT
 GROTON, CT



- 1 CONSTRUCTION PLATE
- CONCRETE WALK
- BEACH
- ROCKY SHOREFRONT/TIDAL VEGETATION
- GRASSY AREA
- EELGRASS AREA
- PERMANENT IMPACTS
- TEMPORARY IMPACTS
- HTL=2.7'
- CJL=2.1'
- MHW=0.8'
- MLW=-1.8'

CITY OF GROTON ENGINEERING DEPARTMENT	SITE PLAN-1
NAVD 1988 DATUM SEPTEMBER 2019	SHORE AVENUE SEA WALL REPLACEMENT GROTON, CT

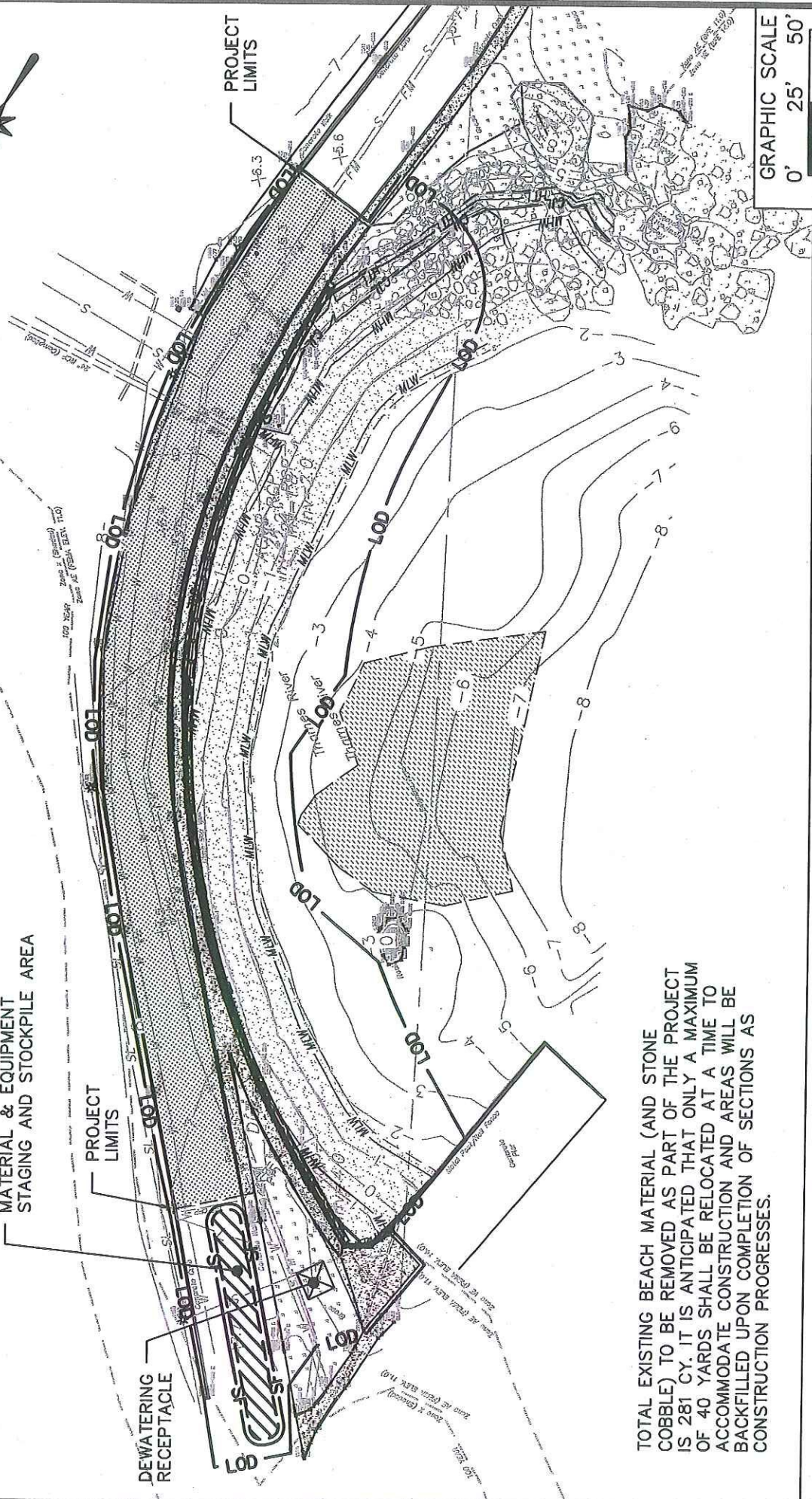


MATERIAL & EQUIPMENT STAGING AND STOCKPILE AREA

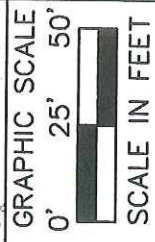
PROJECT LIMITS

DEWATERING RECEPTACLE

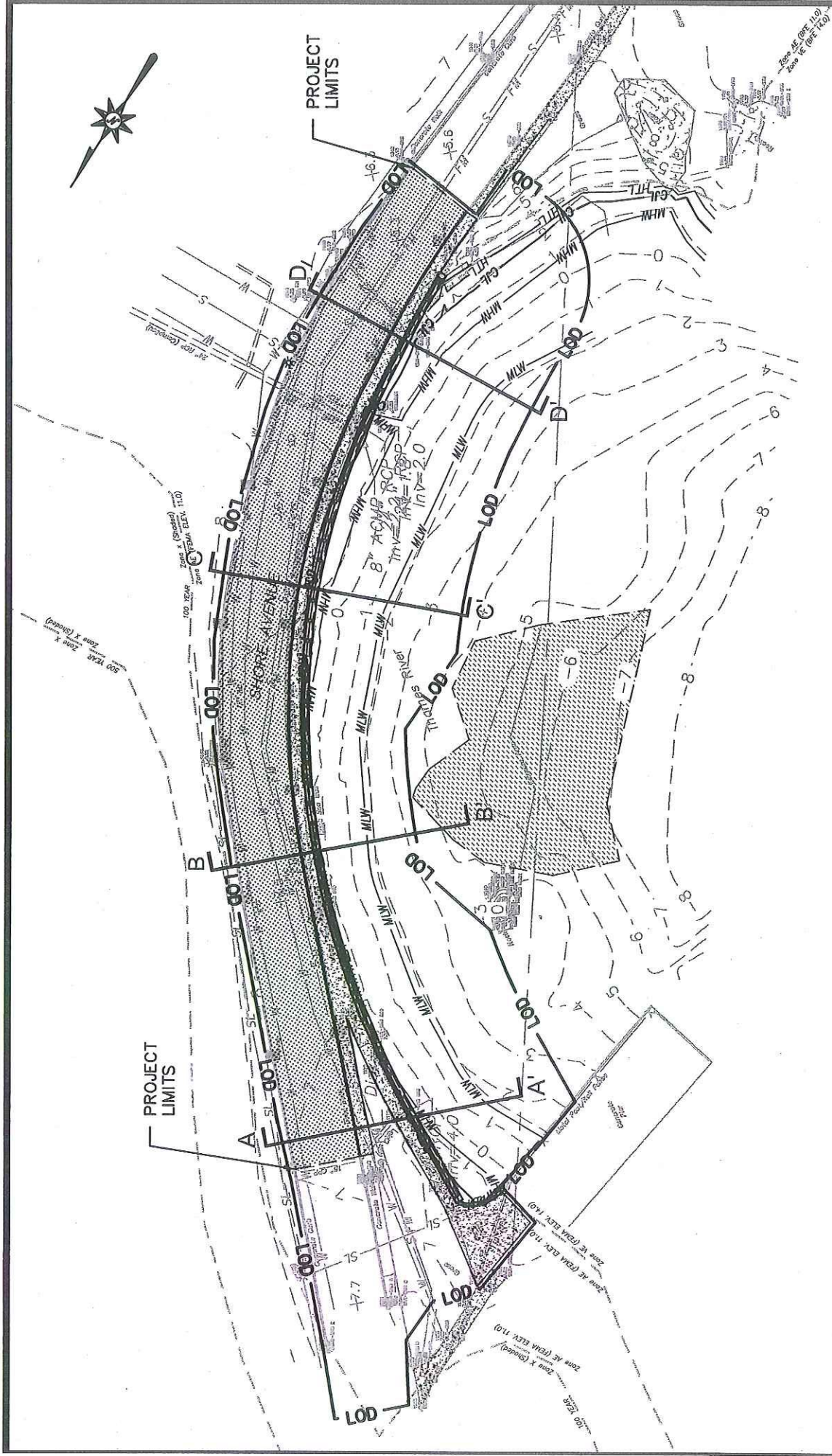
PROJECT LIMITS



TOTAL EXISTING BEACH MATERIAL (AND STONE COBBLE) TO BE REMOVED AS PART OF THE PROJECT IS 281 CY. IT IS ANTICIPATED THAT ONLY A MAXIMUM OF 40 YARDS SHALL BE RELOCATED AT A TIME TO ACCOMMODATE CONSTRUCTION AND AREAS WILL BE BACKFILLED UPON COMPLETION OF SECTIONS AS CONSTRUCTION PROGRESSES.



CITY OF GROTON ENGINEERING DEPARTMENT	CONSTRUCTION STAGING & DEWATERING PLAN
NAVD 1988 DATUM SEPTEMBER 2019	SHORE AVENUE SEA WALL REPLACEMENT GROTON, CT

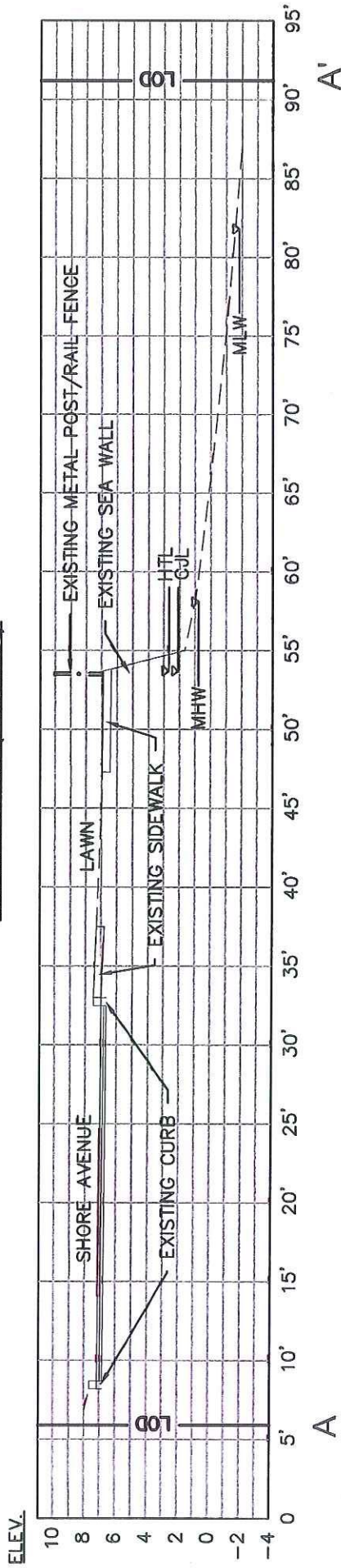


GRAPHIC SCALE
 0' 25' 50'
 SCALE IN FEET

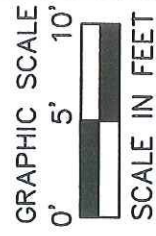
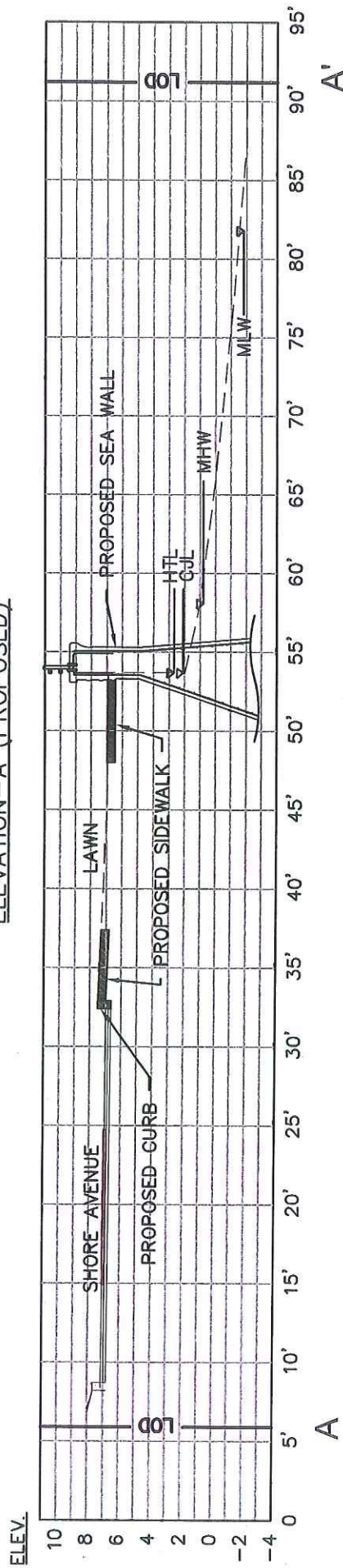
HTL=2.7' MHW=0.8'
 C.J.L.=2.1' MLW=-1.8'

<p>CITY OF GROTON ENGINEERING DEPARTMENT</p>	<p>CROSS SECTION INDEX PLAN-1</p>
<p>NAVD 1988 DATUM SEPTEMBER 2019</p>	<p>SHORE AVENUE SEA WALL REPLACEMENT GROTON, CT</p>

ELEVATION-A (EXISTING)



ELEVATION-A (PROPOSED)



HTL=2.7' MHW=0.8'
CJL=2.1' MLW=-1.8'

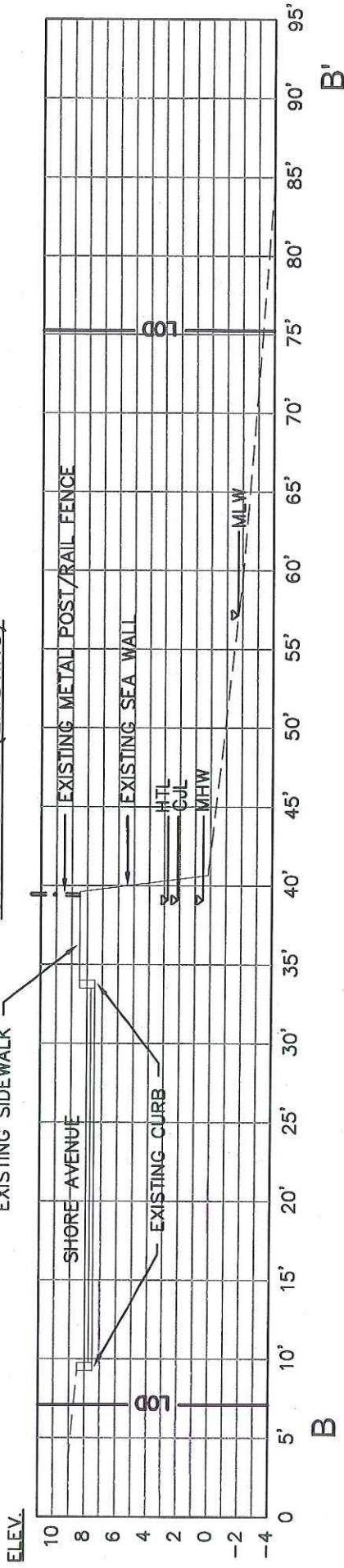
CITY OF GROTON
ENGINEERING DEPARTMENT

NAVD 1988 DATUM
SEPTEMBER 2019

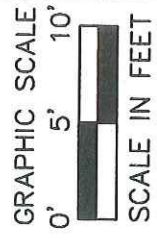
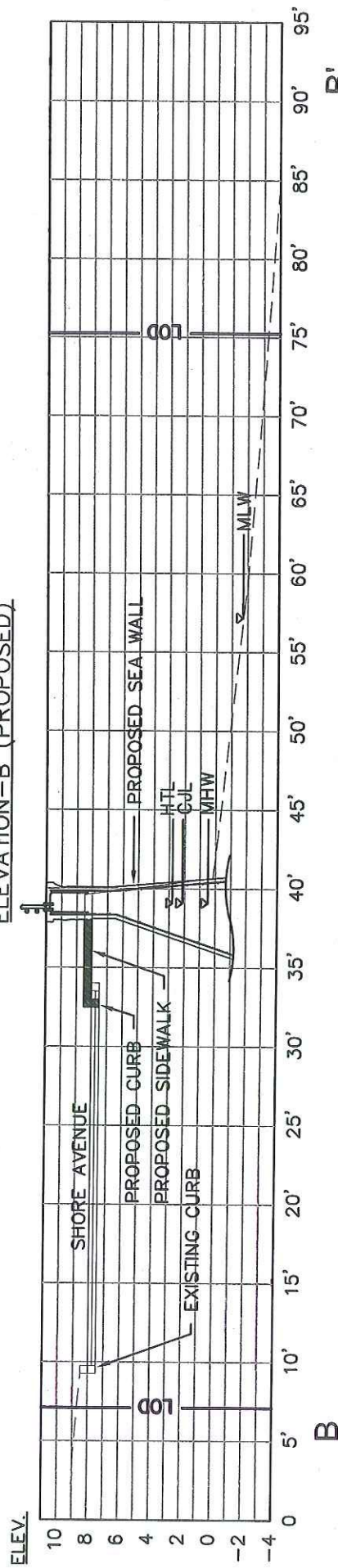
CROSS SECTION-A

SHORE AVENUE SEA WALL REPLACEMENT
GROTON, CT

ELEVATION-B (EXISTING)



ELEVATION-B (PROPOSED)



HTL=2.7' MHW=0.8'
CJL=2.1' MLW=-1.8'

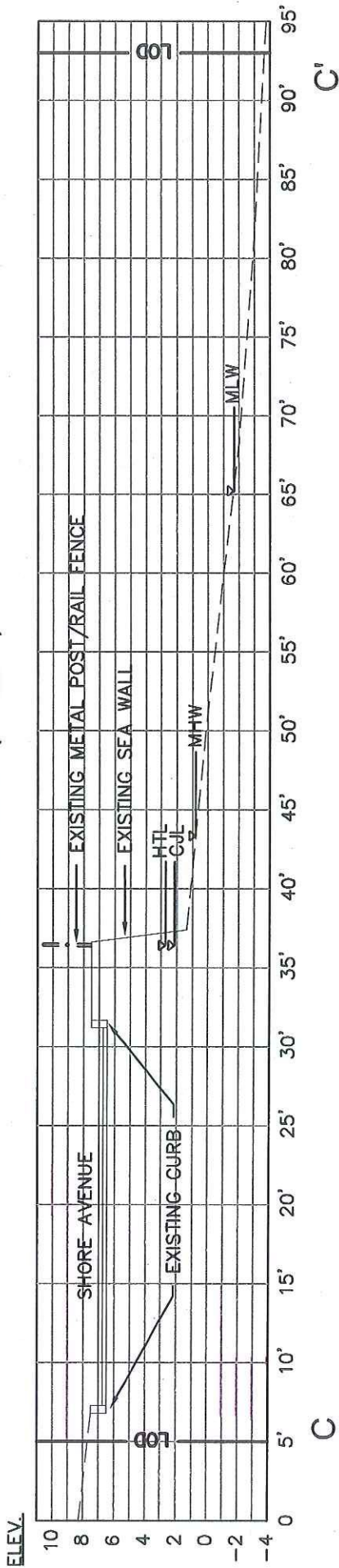
CITY OF GROTON
ENGINEERING DEPARTMENT

CROSS SECTION-B

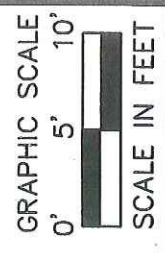
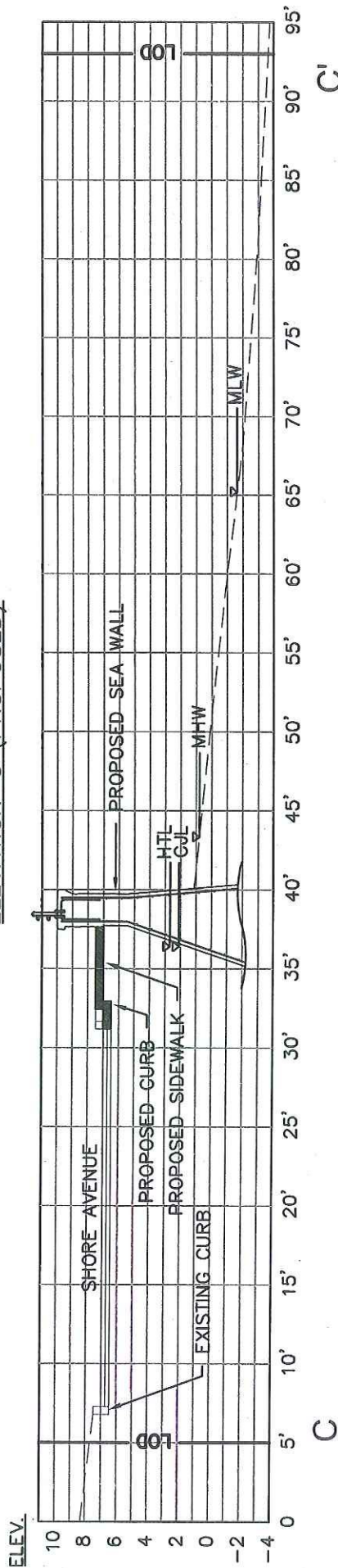
NAVD 1988 DATUM
SEPTEMBER 2019

SHORE AVENUE SEA WALL REPLACEMENT
GROTON, CT

ELEVATION - C (EXISTING)



ELEVATION - C (PROPOSED)



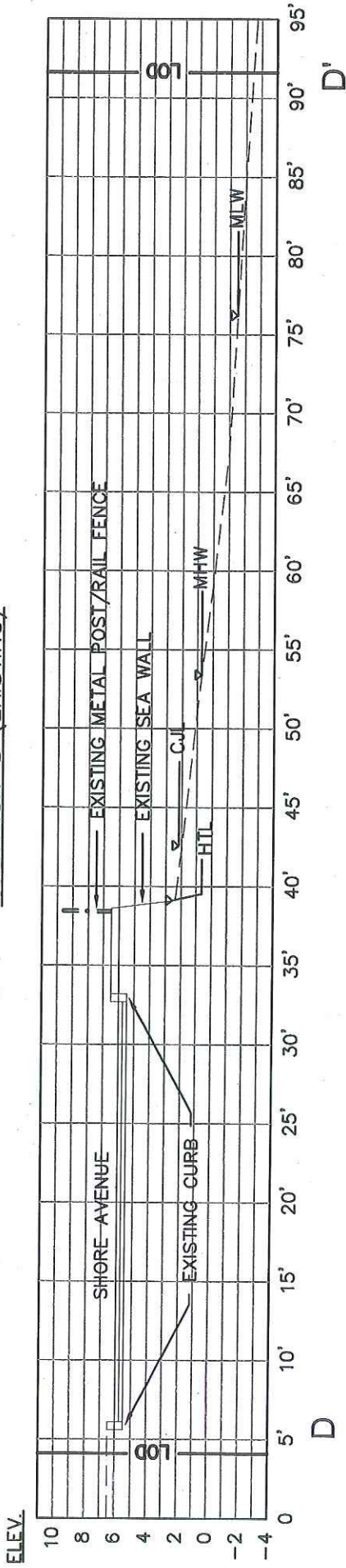
HTL=2.7' MHW=0.8'
CJL=2.1' MLW=-1.8'

CITY OF GROTON
ENGINEERING DEPARTMENT
NAVD 1988 DATUM
SEPTEMBER 2019

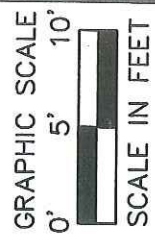
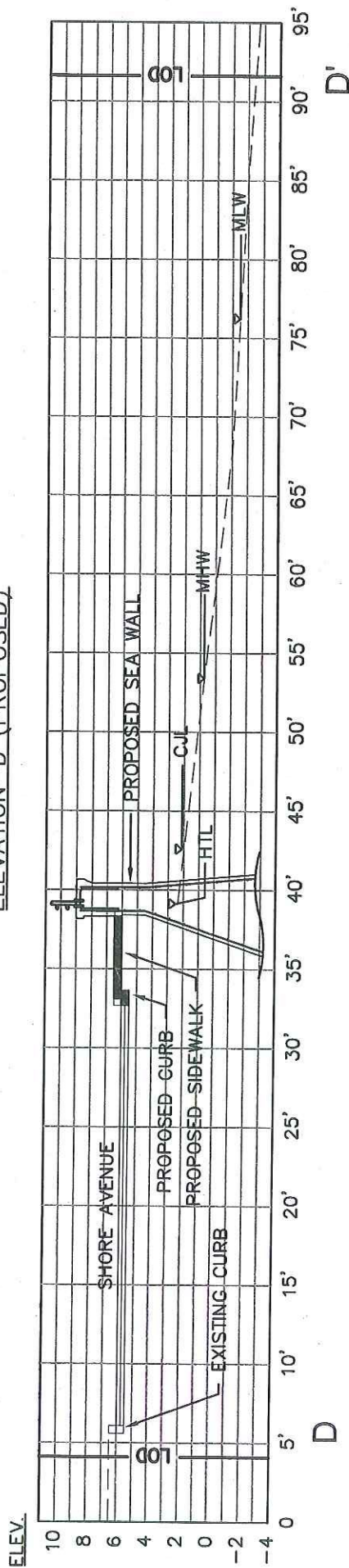
CROSS SECTION-C

SHORE AVENUE SEA WALL REPLACEMENT
GROTON, CT

ELEVATION-D (EXISTING)



ELEVATION-D (PROPOSED)



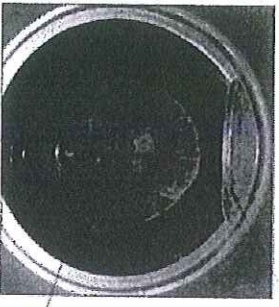
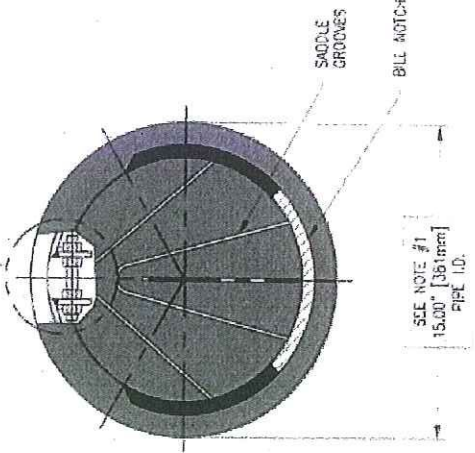
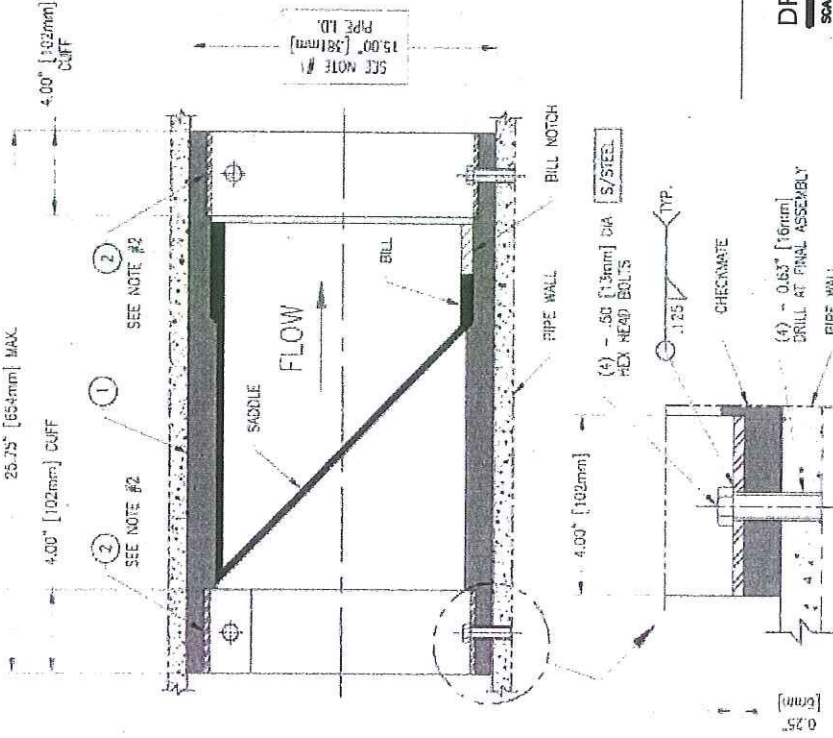
HTL=2.7' MHW=0.8'
CJL=2.1' MLW=-1.8'

CITY OF GROTON
ENGINEERING DEPARTMENT
NAVD 1988 DATUM
SEPTEMBER 2019

CROSS SECTION-D
SHORE AVENUE SEA WALL REPLACEMENT
GROTON, CT

ITEM QTY.	DESCRIPTION	MA'T'L
1	ULTRAFLEX CHECKMATE CHECK VALVE	NEOPRENE
2	CLAMP	304 S/STEEL

- NOTES:
1. PIPE INSIDE DIAMETER - **MUST BE SUPPLIED**
(MINIMUM ALLOWABLE PIPE DIAMETER - 13.50 INCHES)
 2. CLAMP INSTALLED IN UPSTREAM OR DOWNSTREAM CUFF
DEPENDENT ON INSTALLATION ORIENTATION.
 3. MAXIMUM ALLOWABLE BACK PRESSURE - **64.0 FEET**
 4. IT IS RECOMMENDED TO BOLT OR PIN CHECKMATE
TO PIPE AS SHOWN, 4 PLACES 90° APART



PRELIMINARY DRAWING
NOT FOR APPROVAL PURPOSES

DRAINAGE CHECK VALVE - 15" DIA

SCALE: NTS

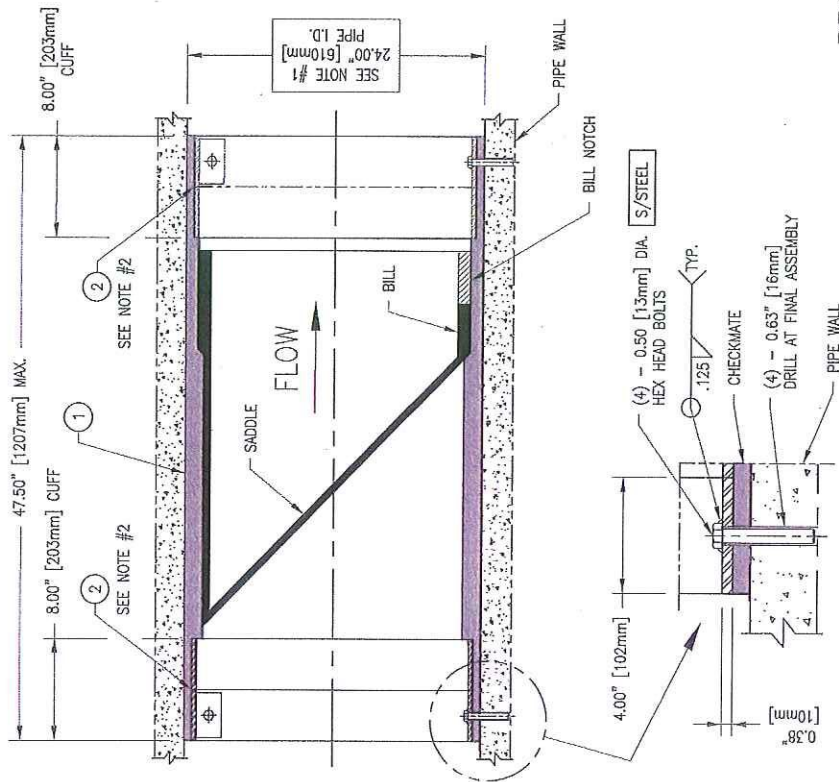
PIN PER NOTE #4
RECOMMENDED PINNING CONFIGURATION
(SUPPLIED BY CUSTOMER) (SEE I.O.M.)
NOT TO SCALE

CITY OF GROTON
ENGINEERING DEPARTMENT

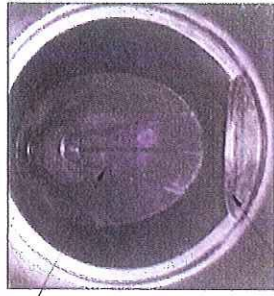
NAVD 1988 DATUM
SEPTEMBER 2019

OUTFALL DETAIL SHEET - 1

SHORE AVENUE SEA WALL REPLACEMENT
GROTON, CT



- NOTES:
1. PIPE INSIDE DIAMETER - MUST BE SUPPLIED (MINIMUM ALLOWABLE PIPE DIAMETER - 23.25 INCHES)
 2. CLAMP INSTALLED IN UPSTREAM OR DOWNSTREAM CUFF DEPENDING ON INSTALLATION ORIENTATION
 3. MAXIMUM ALLOWABLE BACK PRESSURE - 45.0 FEET
 4. IT IS RECOMMENDED TO BOLT OR PIN CHECKMATE TO PIPE AS SHOWN, 4 PLACES 90° APART



PRELIMINARY DRAWING
NOT FOR APPROVAL PURPOSES

DRAINAGE CHECK VALVE - 24" DIA

SCALE: NTS

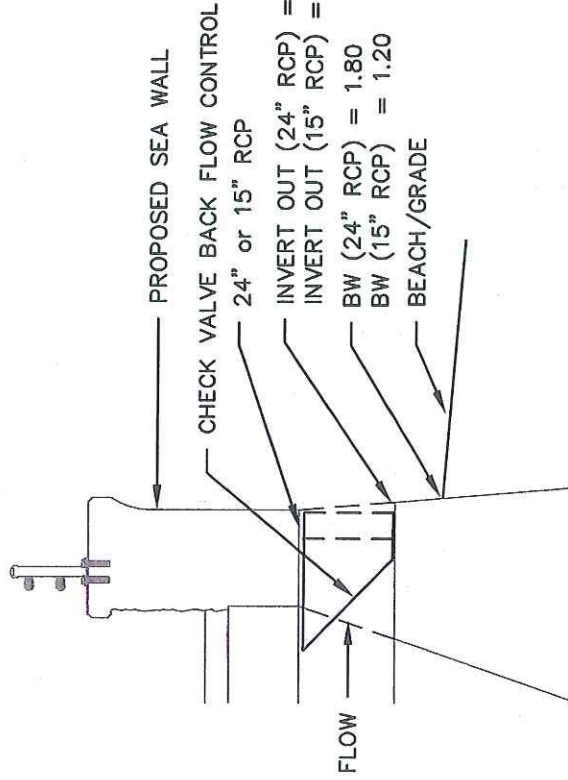
PIN PER NOTE #4
RECOMMENDED PINNING CONFIGURATION
(SUPPLIED BY CUSTOMER) (SEE I.O.M.)
NOT TO SCALE

CITY OF GROTON
ENGINEERING DEPARTMENT

NAVD 1988 DATUM
SEPTEMBER 2019

OUTFALL DETAIL SHEET-2

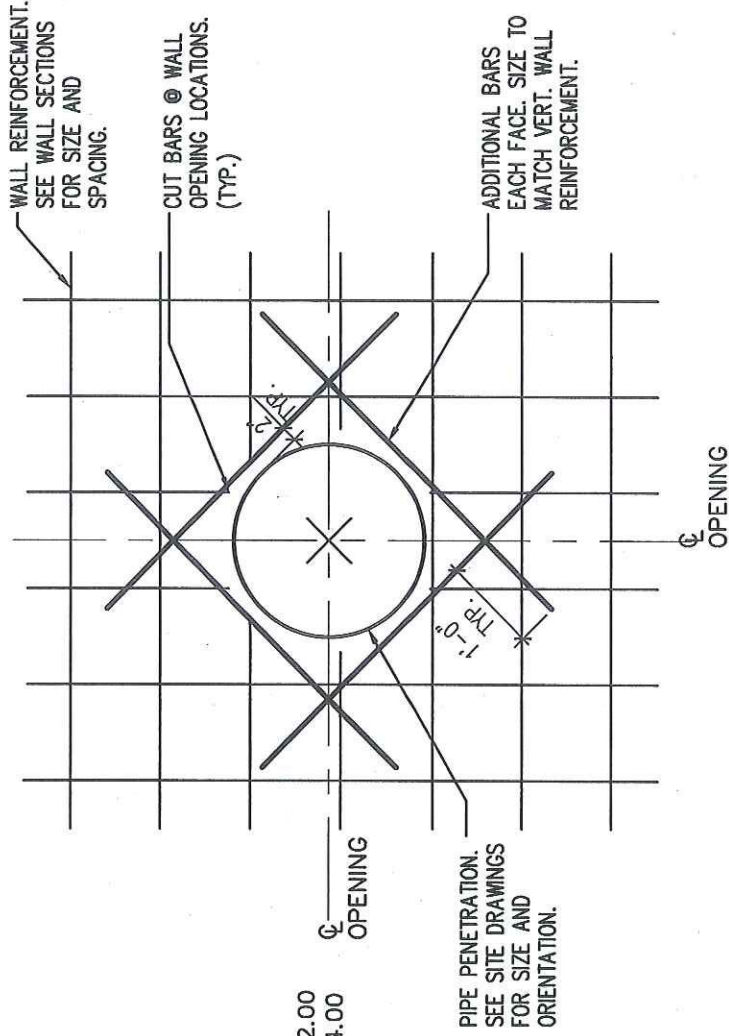
SHORE AVENUE SEA WALL REPLACEMENT
GROTON, CT



NOTE: PIPE INVERTS AND BOTTOM OF WALL (BW) ELEVATIONS TO MATCH EXISTING.

DRAINAGE CHECK VALVE

SCALE: NTS



WALL REINFORCEMENT AT PIPE PENETRATION

SCALE: NTS

HTL=2.7' MHW=0.8'
 C/JL=2.1' MLW=-1.8'

CITY OF GROTON
 ENGINEERING DEPARTMENT

NAVD 1988 DATUM
 SEPTEMBER 2019

OUTFALL DETAIL SHEET-3

SHORE AVENUE SEA WALL REPLACEMENT
 GROTON, CT

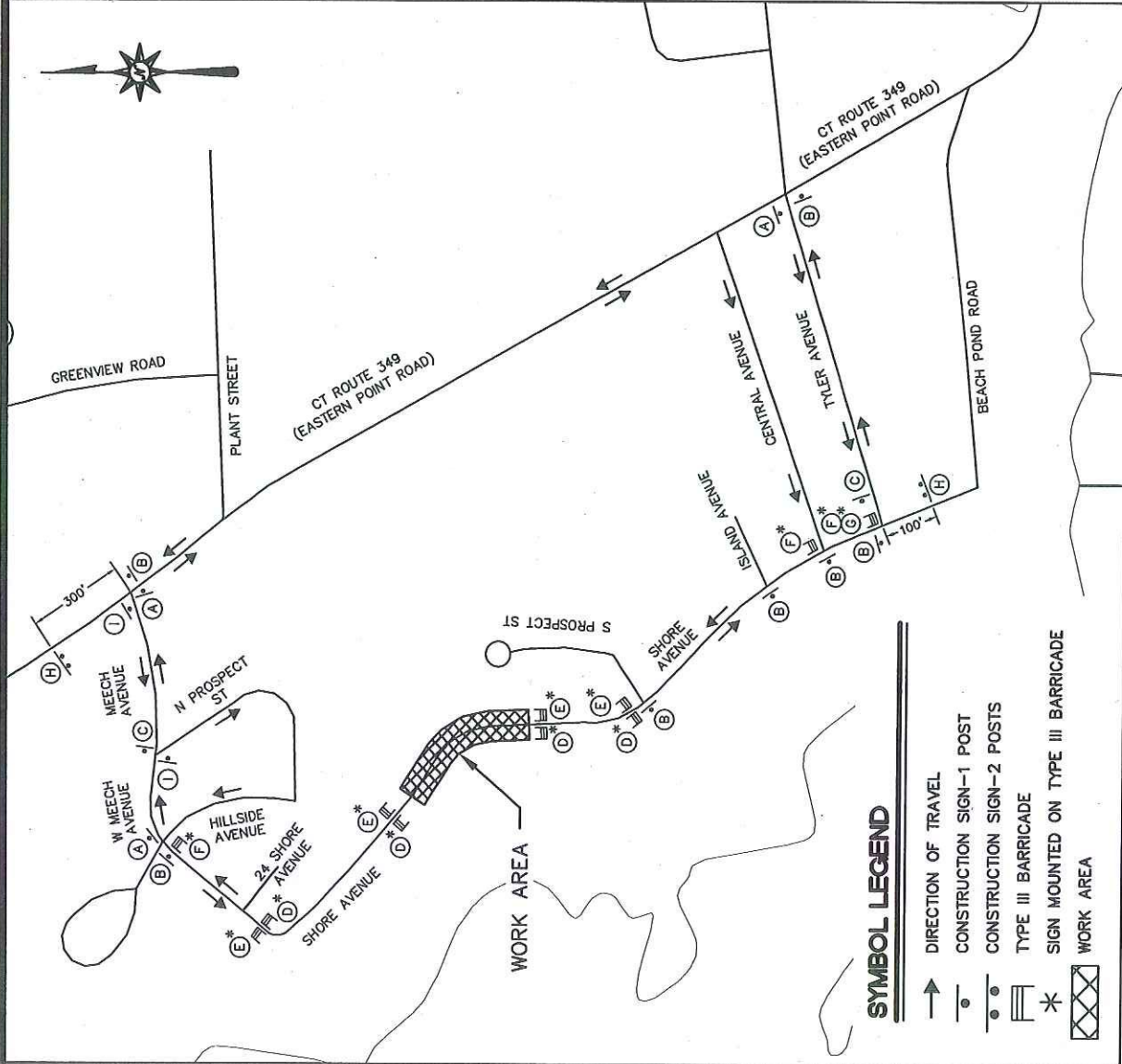
GENERAL NOTES

1. ALL SIGNS & TRAFFIC CONTROL DEVICES SHALL CONFORM TO THE MUTCD & CTDOT SPECIFICATIONS AND DETAILS.
2. ALL LANE CLOSURES SHALL BE COORDINATED WITH THE CITY OF GROTON AND CTDOT DISTRICT 2 BEFORE START OF CONSTRUCTION.
3. EXISTING SIGNS SHALL BE REMOVED OR COVERED IF IN CONFLICT WITH THE DETOUR CONTROL PLAN.
4. DISTANCE BETWEEN CONSTRUCTION SIGNS MAY BE REVISED TO MEET FIELD CONDITIONS.
5. EXACT LOCATION OF ALL TRAFFIC CONTROL DEVICES TO BE APPROVED BY THE CITY AND CTDOT DISTRICT 2.
6. ALL TEMPORARY TRAFFIC CONTROL SIGNS SHALL BE POST MOUNTED. THE CONTRACTOR MUST OBTAIN PERMISSION FROM THE CITY AND CTDOT DISTRICT 2 PRIOR TO INSTALLATION.
7. THE LOCATION OF TYPE III BARRICADES SHOWN ON THE PLANS ARE APPROXIMATE AND SHALL BE ADJUSTED BY THE CONTRACTOR TO MEET FIELD CONDITIONS AND TO CLEARLY DEFINE ACCESS TO AND EGRESS FROM ALL ROADWAYS AND DRIVEWAYS.
8. THE CITY SHALL POST ALL NO PARKING SIGNAGE IF REQUIRED.
9. SERIES 16-M AND 16-S SIGNS SHALL BE PLACED AS DIRECTED BY THE ENGINEER.

SIGN LEGEND

(A)	30" DETOUR 24" →	80-9710R	60" ROAD CLOSED TO THRU TRAFFIC 30"	80-9081
(B)	30" DETOUR 24" ←	80-9710L	48" DETOUR →	80-9701
(C)	24" END DETOUR	80-9708	60" SHORE AVENUE CLOSED FOLLOW DETOUR	80-9928
(D)	30" SIDEWALK CLOSED 18"	80-9075	30" DETOUR 24" ↓	80-9710V
(E)	48" ROAD CLOSED 30"	80-9080		

GRAPHIC SCALE
0' 250' 500'
SCALE IN FEET



SYMBOL LEGEND

- DIRECTION OF TRAVEL
- CONSTRUCTION SIGN-1 POST
- CONSTRUCTION SIGN-2 POSTS
- ▬ TYPE III BARRICADE
- * SIGN MOUNTED ON TYPE III BARRICADE
- ▨ WORK AREA

1 CONSTRUCTION PLATE

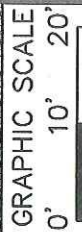
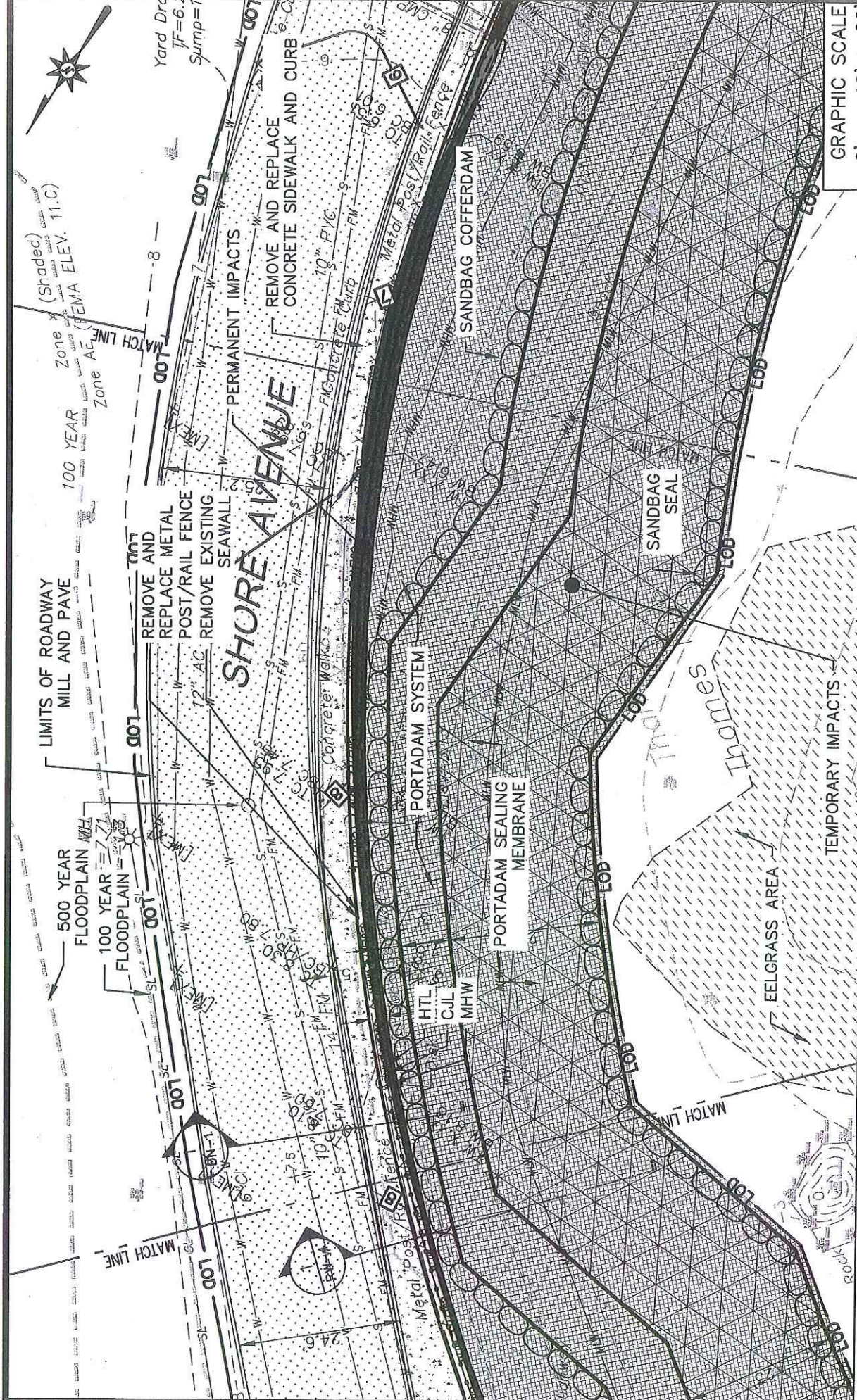
SCALE: 1"=500'

CITY OF GROTON
ENGINEERING DEPARTMENT

NAVD 1988 DATUM
NOVEMBER 2019

DETOUR PLAN-1

SHORE AVENUE SEA WALL REPLACEMENT
GROTON, CT



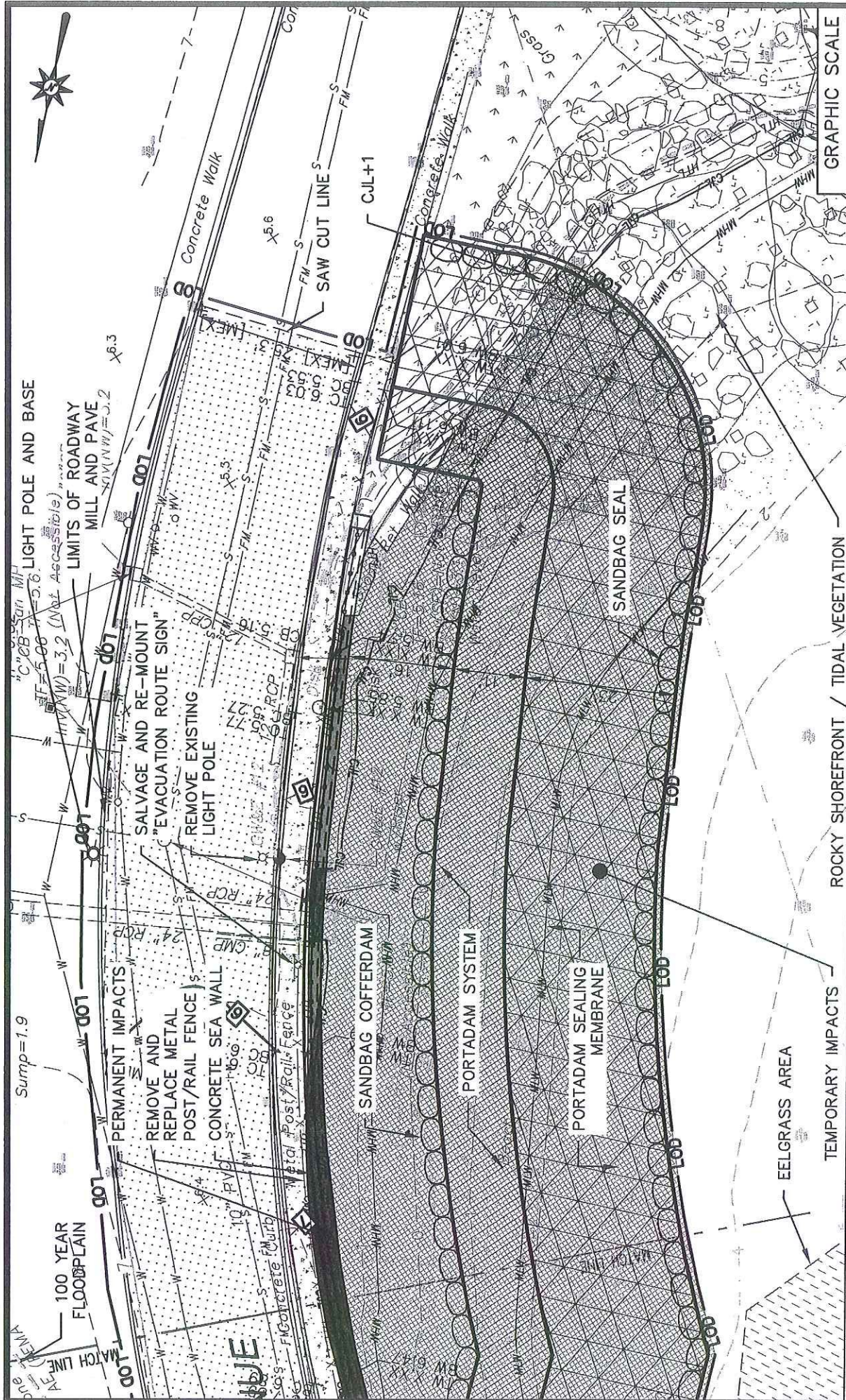
- 1 CONSTRUCTION PLATE
- CONCRETE WALK
- BEACH
- ROCKY SHOREFRONT/TIDAL VEGETATION
- GRASSY AREA
- EELGRASS AREA
- PERMANENT IMPACTS
- TEMPORARY IMPACTS
- HTL=2.7' MHW=0.8'
- CJL=2.1' MLW=-1.8'

CITY OF GROTON
ENGINEERING DEPARTMENT

NAVJ 1988 DATUM
SEPTEMBER 2019

SITE PLAN-2

SHORE AVENUE SEA WALL REPLACEMENT
GROTON, CT



GRAPHIC SCALE
0' 10' 20'

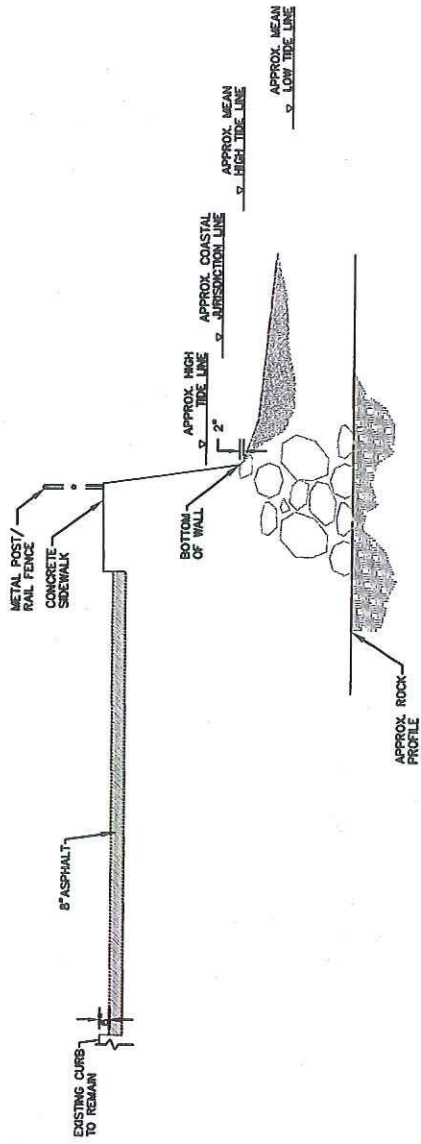
- 1 CONSTRUCTION PLATE
- CONCRETE WALK
- BEACH
- ROCKY SHOREFRONT/TIDAL VEGETATION
- GRASSY AREA
- EELGRASS AREA
- PERMANENT IMPACTS
- HTL=2.7' MHW=0.8'
- TEMPORARY IMPACTS
- CJL=2.1' MLW=-1.8'

CITY OF GROTON
ENGINEERING DEPARTMENT

NAVD 1988 DATUM
SEPTEMBER 2019

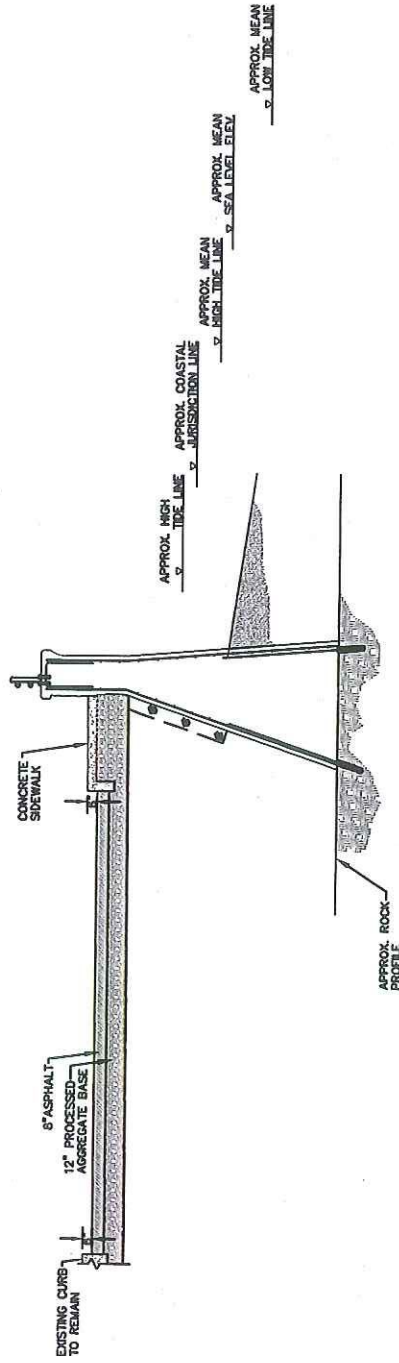
SITE PLAN-3

SHORE AVENUE SEA WALL REPLACEMENT
GROTON, CT



EXISTING RETAINING WALL AND ROAD SECTION

SCALE: 1"=10'



PROPOSED RETAINING WALL AND ROAD SECTION

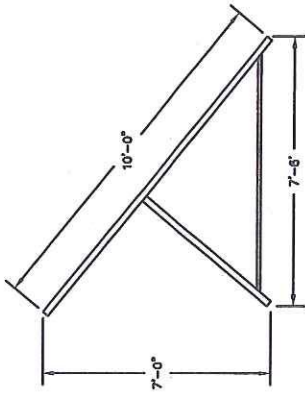
SCALE: 1"=10'



CITY OF GROTON
ENGINEERING DEPARTMENT
NAVD 1988 DATUM
SEPTEMBER 2019

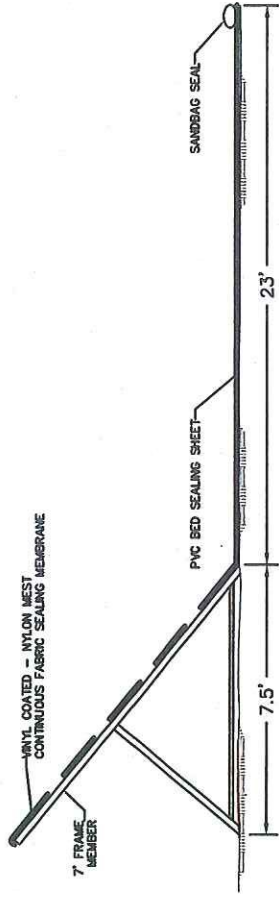
DETAIL SHEET-1

SHORE AVENUE SEA WALL REPLACEMENT
GROTON, CT



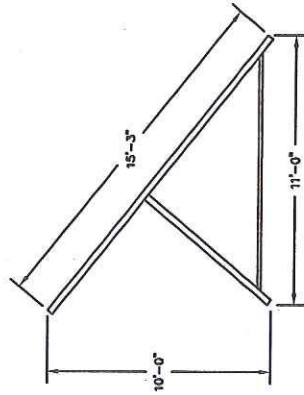
PORTADAM FRAME SECTION (7' HIGH FRAME)

SCALE: 1"=10'



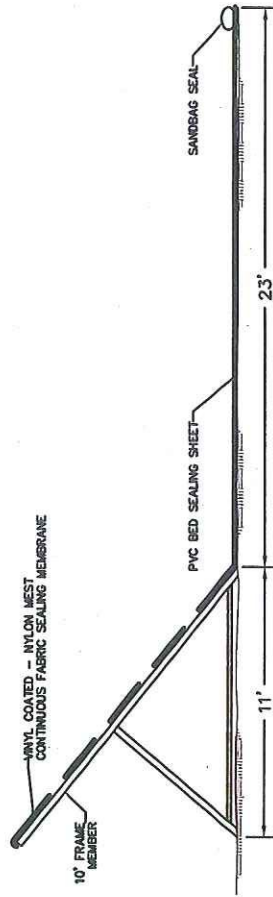
SEALING MEMBRANE SECTION (7' HIGH FRAME)

NTS



PORTADAM FRAME SECTION (10' HIGH FRAME)

SCALE: 1"=10'



SEALING MEMBRANE SECTION (10' HIGH FRAME)

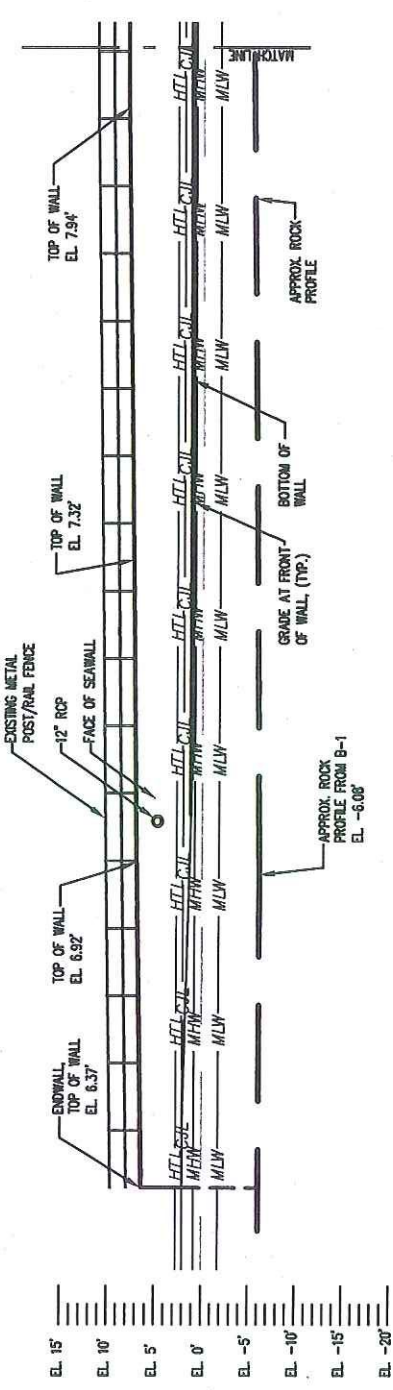
NTS

CITY OF GROTON
ENGINEERING DEPARTMENT

DETAIL SHEET-2

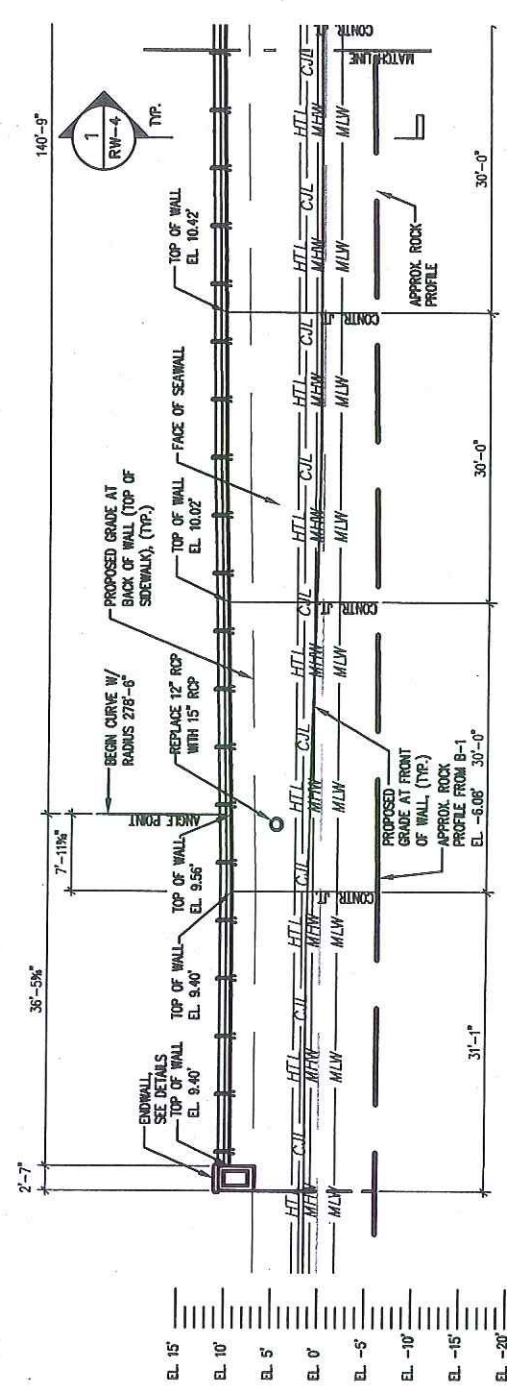
NAVD 1988 DATUM
SEPTEMBER 2019

SHORE AVENUE SEA WALL REPLACEMENT
GROTON, CT



1 EXISTING RETAINING WALL PARTIAL ELEVATION

SCALE: 1"=20'



2 PROPOSED RETAINING WALL PARTIAL ELEVATION

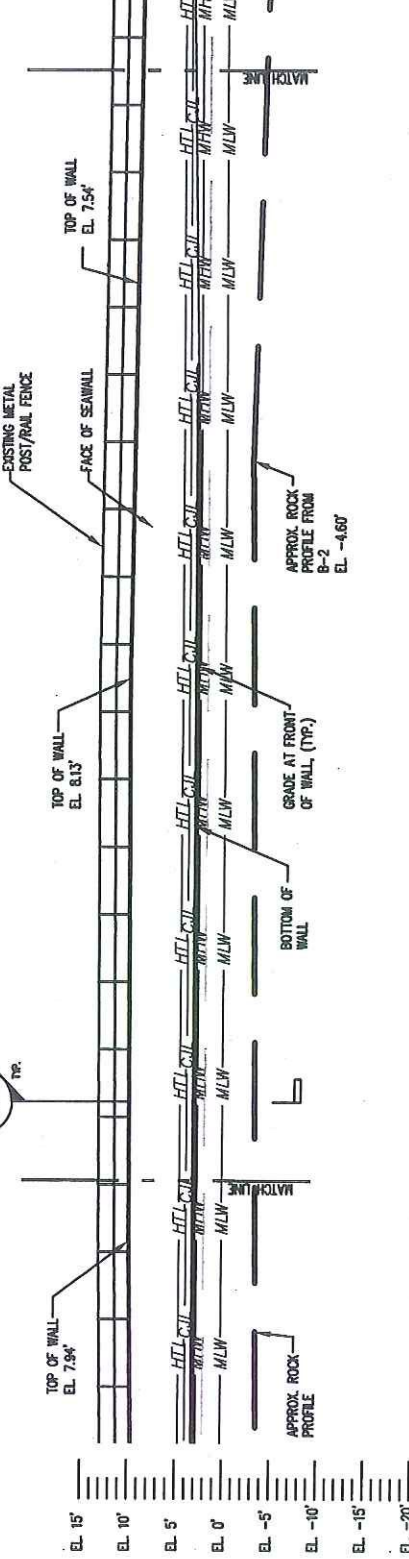
SCALE: 1"=20'

CJL=2.1'
 HTL=2.7'
 MHW=0.8'
 MLW=-1.8'

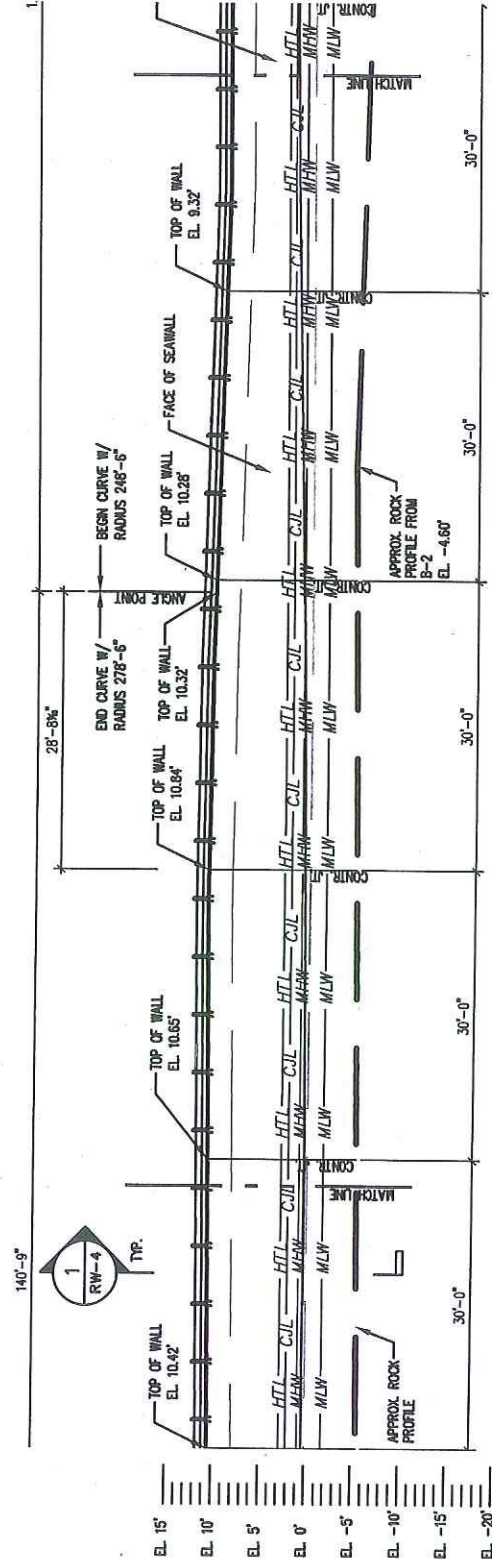


CITY OF GROTON
 ENGINEERING DEPARTMENT
 NAVD 1988 DATUM
 SEPTEMBER 2019

RETAINING WALL-1
 SHORE AVENUE SEA WALL REPLACEMENT
 GROTON, CT



1 EXISTING RETAINING WALL PARTIAL ELEVATION
SCALE: 1"=20'



2 PROPOSED RETAINING WALL PARTIAL ELEVATION
SCALE: 1"=20'

CJL=2.1'
HTL=2.7'
MHW=0.8'
MLW=-1.8'

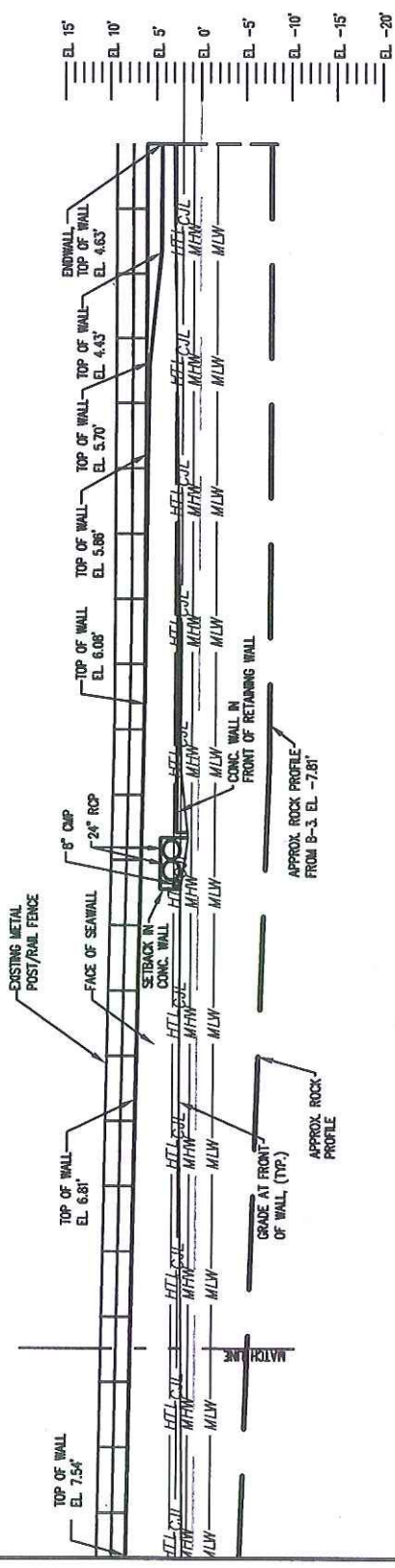
GRAPHIC SCALE



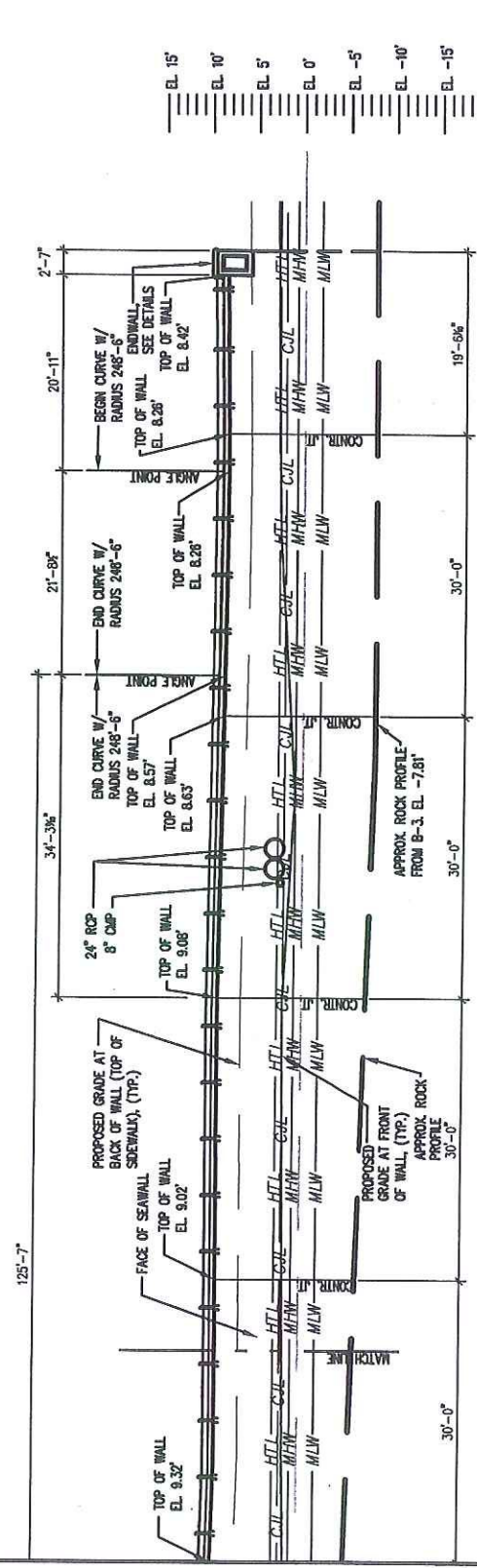
SCALE IN FEET

CITY OF GROTON
ENGINEERING DEPARTMENT
NAVD 1988 DATUM
SEPTEMBER 2019

RETAINING WALL-2
SHORE AVENUE SEA WALL REPLACEMENT
GROTON, CT

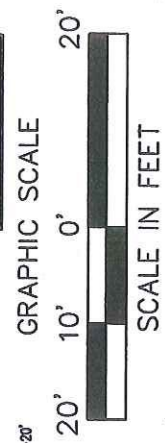


1 EXISTING RETAINING WALL PARTIAL ELEVATION
SCALE: 1"=20'



2 PROPOSED RETAINING WALL PARTIAL ELEVATION
SCALE: 1"=20'

CJL=2.1'
HTL=2.7'
MHW=0.8'
MLW=-1.8'



CITY OF GROTON
ENGINEERING DEPARTMENT
NAVD 1988 DATUM
SEPTEMBER 2019

RETAINING WALL-3
SHORE AVENUE SEA WALL REPLACEMENT
GROTON, CT

SEE SHEET DN-2 TOP OF WALL FORMING DETAILS, (TYP.)

PEDESTRIAN RAIL, SEE SHEET DN-2 FOR RAILING DETAILS (TYP.)

#6 U BARS AT 6" O.C. FORM LINER TO BE PROVIDED TO 6" BELOW FINAL SIDEWALK ELEVATION RECONSTRUCTION OF THE SIDEWALK ROADWAY, SEE CIVIL DRAWINGS.

#6 HORIZ. @ 12" o.c. THIS FACE.
#9 VERT. @ 6" o.c. THIS FACE.
DRAINAGE STONE BEHIND BACKFILL, WALL DOWN TO WEEPS (TYP.)

SEE CIVIL DRAWINGS. FILTER FABRIC (TYP.) COORDINATE DRAINAGE WITH CIVIL DRAWINGS DAMPROOF BACK OF WALL FINISHED GRADE (TYP.)

APPROX. EXCAVATION LIMITS. FINAL LIMITS TO BE DETERMINED BY THE EXISTING CONDITIONS ENCOUNTERED

DRILL AND EPOXY #9 BARS @ 6" o.c., 15" EMBEDMENT INTO ROCK, TYP.

DRILL AND EPOXY PEDESTRIAN RAIL, (TYP.)
B/CAP T/WALL, SEE ELEV.
COVE. SEE SHEET DN-2 FOR DIMENSIONS (TYP.)

#6 HORIZ. BARS @ 12" o.c. THIS FACE BEGIN 4:12 BATTER (ROADWAY SIDE) BEGIN 1:12 BATTER (WATER SIDE)

#9 VERT. BARS @ 6" o.c. THIS FACE

T/EXIST. SAND, SEE ELEV.

APPROX. EXCAVATION LIMITS. FINAL LIMITS TO BE DETERMINED BY THE EXISTING CONDITIONS ENCOUNTERED

VARIES 3'-0" - 18'-0" REFER TO SITE PLANS

APPROX. ROCK ELEVATION VARIES. SEE BORING LOGS FOR LOCATIONS KNOWN. ACTUAL ROCK PROFILE WILL VARY ACROSS THE LENGTH OF THE WALL.

TEMP. COFFERDAM OR PORTADAM

T/SIDEWALK, SEE CIVIL PLANS

SANDBAG COFFERDAM

APPROX. HIGH TIDE LINE
APPROX. COASTAL JURISDICTION LINE
APPROX. MEAN HIGH TIDE LINE
APPROX. MEAN SEA LEVEL ELEV.

APPROX. MEAN LOW TIDE LINE

CJL=2.1'
HTL=2.7'
MHW=0.8'
MLW=-1.8'

GRAPHIC SCALE



SCALE IN FEET

1 PROPOSED RETAINING WALL SECTION
SCALE 1"=5'

CITY OF GROTON
ENGINEERING DEPARTMENT

NAVD 1988 DATUM
SEPTEMBER 2019

RETAINING WALL-4

SHORE AVENUE SEA WALL REPLACEMENT
GROTON, CT

COASTAL RESTORATION LEGEND

HTL	HIGH TIDE LINE (ELEV. 2.7)
C-JL	COASTAL JURISDICTION LINE (ELEV. 2.1)
MHW	MEAN HIGH WATER LINE (ELEV. 0.8)
MLW	MEAN LOW WATER LINE (ELEV. -1.8)
	FOOT PATH
	ROCKY SHOREFRONT WITH SPARSE VEGETATION PLANTING
	COASTAL AREA RESTORATION PLAN
	AREA OF FINE COBBLE

SURVEY LEGEND

—	Property Line
—	Edge of Water
—	Major Contour
—	Minor Contour
X	Fence
—	Overhead Wires
—	Underground Electric Line
—	Underground Steelflight/Streetlight Electric Line
G	Gas Line
S	Sanitary Sewer
FM	Storm Sewer
—	Underground Cable Television Line
—	Underground Telecommunications Line
W	Water Line
□	Handhole
⊙	Electric Meter
⊕	Utility Pole w/ Light
⊖	Light Pole
○	Gas Valve
□	Catch Basin
□	Double Type II Catch Basin
○	Manhole
⊕	Fire Hydrant
○	Water Valve
—	Sign
—	Boiler
⊙	Deciduous Tree
⊕	Coniferous Tree

SURVEY GENERAL NOTES

- A) THIS MAP HAS BEEN PREPARED IN ACCORDANCE WITH THE REGULATIONS WHICH HAVE BEEN ADOPTED BY THE STATE AGENCIES, SECTIONS 20-300b-1 THROUGH 20-300b-20 AND THE "STANDARDS FOR SURVEYS AND MAPS IN THE STATE OF CONNECTICUT" AS ADOPTED BY THE CONNECTICUT ASSOCIATION OF LAND SURVEYORS, INC. ON SEPTEMBER 26, 1996.

B) THIS PLAN CONFORMS TO HORIZONTAL ACCURACY CLASS A-2 WITH RESPECT TO THE EXISTING CONDITIONS, AND HORIZONTAL ACCURACY CLASS D WITH RESPECT TO THE PROPERTY LINES. THIS PLAN CONFORMS TO TOPOGRAPHIC ACCURACY CLASS 1-2.

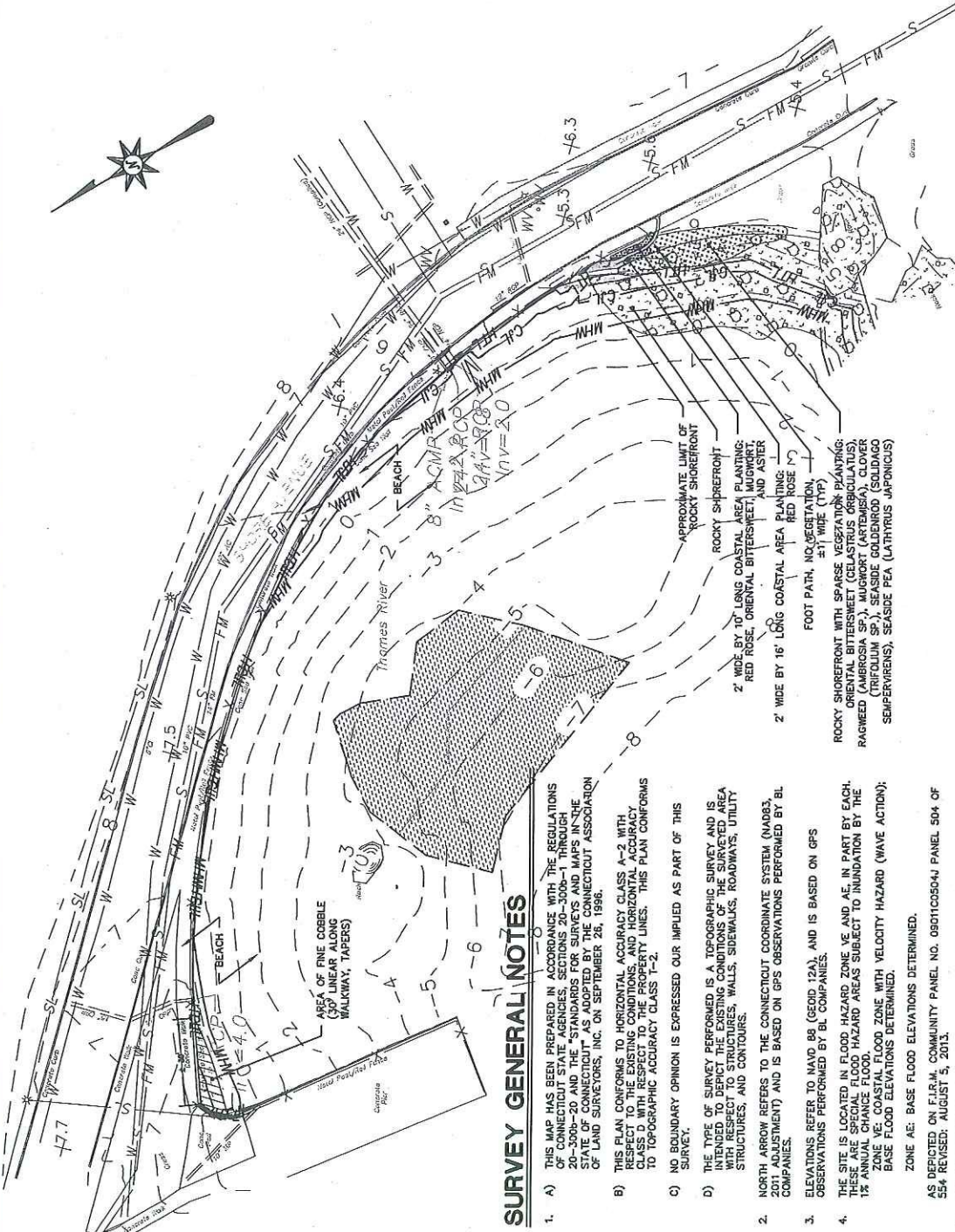
C) NO BOUNDARY OPINION IS EXPRESSED OR IMPLIED AS PART OF THIS SURVEY.

D) THE TYPE OF SURVEY PERFORMED IS A TOPOGRAPHIC SURVEY AND IS GUARANTEED TO BE ACCURATE UNDER THE EXISTING CONDITIONS OF THE SURVEYED AREA WITH RESPECT TO STRUCTURES, WALLS, SUBMANUALS, ROADWAYS, UTILITY STRUCTURES, AND CONTOURS.
- NORTH ARROW REFERS TO THE CONNECTICUT COORDINATE SYSTEM (NAD83, INVESTMENT) AND IS BASED ON GPS OBSERVATIONS PERFORMED BY BL COMPANIES.
- ELEVATIONS REFER TO NAVD 88 (GEOID 12A), AND IS BASED ON GPS OBSERVATIONS PERFORMED BY BL COMPANIES.
- THE SITE IS LOCATED IN FLOOD HAZARD ZONE AE AND AE IN PART BY EACH. THESE ARE SPECIAL FLOOD HAZARD AREAS SUBJECT TO INUNDATION BY THE 1% ANNUAL CHANCE FLOOD.

ZONE VE: COASTAL FLOOD ZONE WITH VELOCITY HAZARD (WAVE ACTION); BASE FLOOD ELEVATIONS DETERMINED.

ZONE AE: BASE FLOOD ELEVATIONS DETERMINED.

AS DEPICTED ON F.I.R.M. COMMUNITY PANEL NO. 090110504J PANEL 504 OF 554 REVISED: AUGUST 5, 2011.
- THE UNDERGROUND UTILITIES DEPICTED HAVE BEEN PLOTTED FROM FIELD SURVEY INFORMATION AND EXISTING DRAWINGS. THE SURVEYOR MAKES NO GUARANTEES THAT THE UNDERGROUND UTILITIES DEPICTED COMPRISE ALL SUCH UTILITIES. THE SURVEYOR DOES NOT WARRANT THAT THE UNDERGROUND UTILITIES DEPICTED ARE IN THE EXACT LOCATION INDICATED THOUGH THEY ARE PLOTTED AS ACCURATELY AS POSSIBLE FROM INFORMATION AVAILABLE. THE SURVEYOR HAS ACCURATELY AS POSSIBLE FROM UNDERGROUND UTILITIES PER CONNECTICUT STATE LAW. THE CONTRACTORS SHALL VERIFY THE LOCATION OF ALL UTILITIES PRIOR TO THE COMMENCEMENT OF EXCAVATION. CALL BEFORE YOU DIG 1-800-322-4455.



CITY OF GROTON
ENGINEERING DEPARTMENT
NAVD 1988 DATUM
SEPTEMBER 2019

COASTAL AREA RESTORATION PLAN
SHORE AVENUE SEA WALL REPLACEMENT
GROTON, CT