

Connecticut Energy Efficiency Fund 2011 Energy Efficiency Incentives Energy Efficiency Ideas for Hotels

Glen Eigo, Energy Engineer, Connecticut Light & Power



Connecticut Energy Efficiency Fund

Commercial & Industrial (C&I) Program Vision

The overall Vision for the future evolution of the Energy Efficiency Fund C&I programs is to cost-effectively support a sustainable and competitive business climate for Connecticut's businesses and industries based on bottom line solutions for economic competitiveness, environmental stewardship, and social responsibility.



Connecticut
Light & Power

The Northeast Utilities System



The United Illuminating Company



The Northeast Utilities System

Connecticut's Energy Efficiency Programs are funded by a Charge on Customer energy bills.
The Programs are designed to help customers manage their energy usage and cost.

About the Energy Efficiency Fund

The Fund was created in 1998. It's mission is to:

- Advance the efficient use of energy
- Reduce air pollution and negative environmental impacts
- Promote economic development and energy security

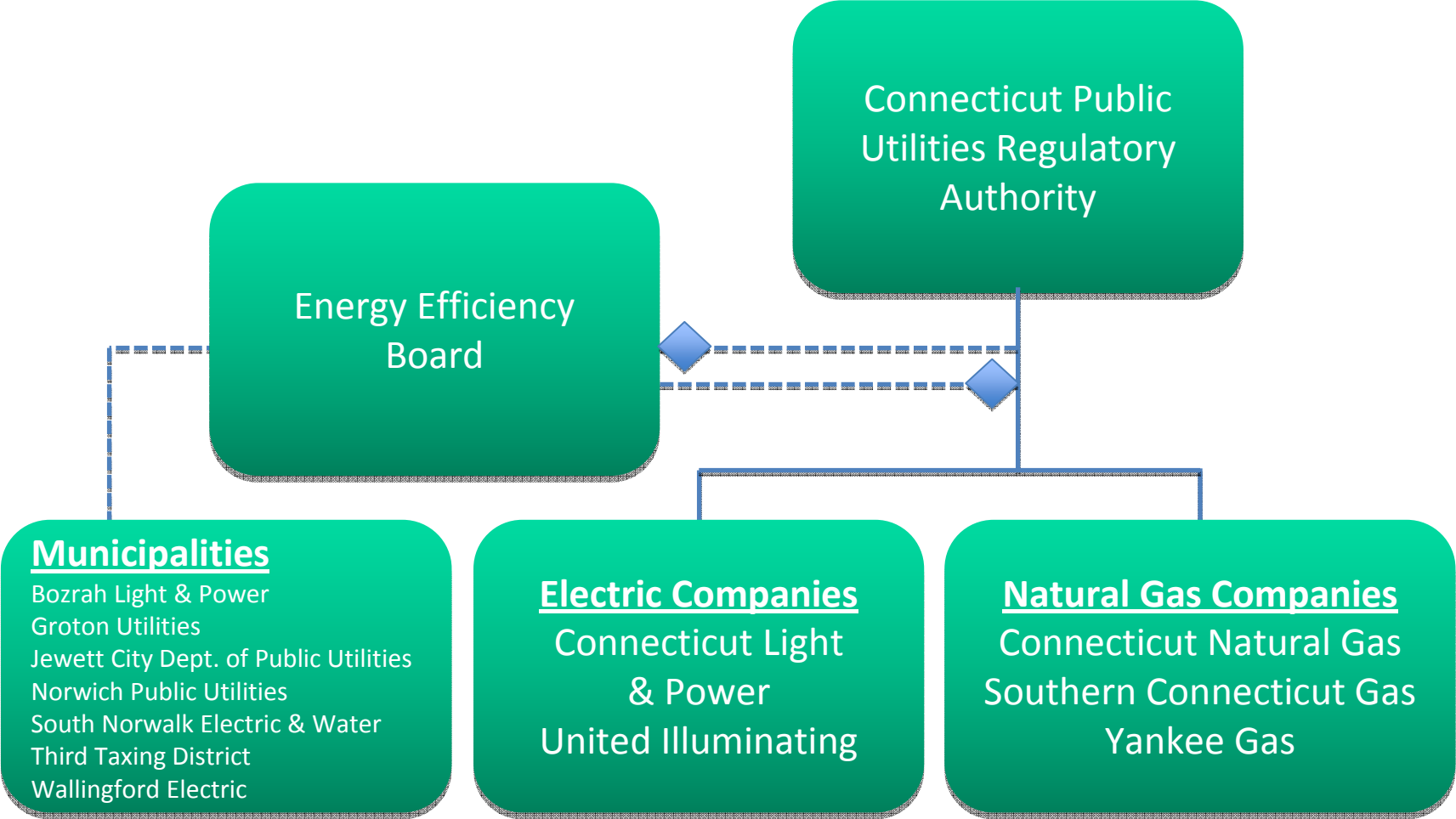
Money for programs comes from electric and natural gas utility customers



2011 Program



Energy Efficiency Program Administration



2011 Program



Current 2011 Energy efficiency incentives (see provided “2011 Project Caps and Incentive Structures for CL&P” and “Energy Efficiency Services” sheets)

- **Energy Concious Blueprint (ECB)**
 - Up to 95% of the incremental cost for true new construction measures
 - Up to 75% of the incremental cost for equipment replacement measures
 - Process equipment measures require 1.5 year customer payback
 - Whole Building Performance (e.g. LEED)
 - Prescriptive incentives

- **Energy Opportunitites (EO)**
 - Incentives of up to 30% of the installed cost
 - EMS System upgrades
 - Lighting upgrades

- **Comprehensive Initiative**
 - Combined projects with more than one energy end use
 - The lesser of:
 - Up to 35% of the installed cost
 - Buy down to a three-year payback



2011 Program



Current 2011 Energy efficiency incentives (see provided “2011 Project Caps and Incentive Structures for CL&P” and “Energy Efficiency Services” sheets)

- **Small Business Energy Advantage (SBEA)**
 - < 200 kW average monthly demand
 - Uses CL&P-approved contractors
 - Zero % "on-the-bill" financing for qualified customers

- **Energy Opportunites (EO)**
 - Minimum facility size 100,000 sq.ft.
 - Requires fully functioning Direct Digital Control (DDC) Energy Management System with trending and reporting
 - Incentives:
 - Scoping Study, \$1,000
 - Investigation Study, \$50%
 - Measure Implementation, up to 30% of installed cost
 - Subject to project and energy caps



2011 Program



Financing Options

■ **Small Commercial and Industrial Financing**

- Low-interest loans available:
 - Average monthly demand greater than 10 kW and below 350 kW over the past year
 - In business at least 3 years
 - Qualify via 3rd Party lender's business credit review process (starts with the loan application)
 - Loan amount between \$2,000 and \$250,000 providing interest subsidies on the first \$100,000
 - Maximum loan term not to exceed 5 years

■ **Small Business Energy Advantage & Municipal Financing**

- 0% interest loans
- On-bill loan repayment
- CL&P provides funding source
- Maximum loan amount: \$100,000
 - Municipal cap of \$500,000 per Municipality/year
- Loan terms:
 - Maximum 3 years
 - Customer size (SBEA) - up to 200 kW
 - New construction/major renovation projects not eligible
 - Requires good credit history with utility



2011 Program



Energy Efficiency Partners Program

- Public Act 07-242, [An Act Concerning Electricity and Energy Efficiency](#)
- Funding for the deployment of demand-side management technologies that conserve energy and reduce peak demand
- Approved Energy Efficiency Partners
- Approved Energy Efficiency Partners Technologies
 - Example Technologies
 - Ice Storage \$950/Ton
 - Gas Chillers \$300/Ton
- <http://www.dpuc.state.ct.us>



2011 Program



The Big Three (in Hotel Energy Use in the Northeast)

- Water Heating – Typically 32% of total energy use in Hotels
- Lighting - Typically 25% of total energy use in Hotels
- Space heating - Typically 22% of total energy use in Hotels
- Remaining usage from Cooling, Ventilation, Cooking and Refrigeration account for less than 5% each of total energy usage

** Data from the U.S. Energy Information Administration (2003)*



2011 Program



Possible Energy Efficiency Solutions

- **Water Heating Solutions**
 - Low flow spray heads in kitchen areas
 - Low flow shower heads in rooms
 - Pool and Hot Tub covers
 - Ozone laundering systems
 - Incentives may be available if water heating uses natural gas or electricity

- **Lighting Solutions**
 - Replace older T12 (and maybe T8) fixtures
 - CFLs in hallways and guest rooms
 - LED lamps in hallways and guest rooms (Energy Star lamps may have rebates or incentives)
 - Exterior Lighting Upgrades (LED, Induction, Lower Wattage HID)

- **Space Heating (and possibly Space Cooling) - Solutions**
 - Book rooms in blocks or floors and adjust EMS systems accordingly
 - EMS System upgrades
 - Room Occupancy based EMS systems
 - Equipment upgrades



2011 Program



CL&P Contact Information

New Construction (ECB): Rich Asselin (860) 665-3292

Retrofit (EO): Glen Eigo (860) 665-5084

O&M/RCx/PRIME: Dave McIntosh (860) 665-3531

Cool Choice/ Express Lighting Rebates: Dave Hayward (860) 665-3386

Small Business: Randy Vagnini (860) 665-4753

Financing: Gentiana Darragjati (860) 665-4757

Residential Programs: Lomont White (860) 665-3790

Natural Gas Programs: Matt Fox (860) 665-3749

CL&P Account Executives



2011 Program



UI Contact Information

New Construction (ECB): Roy W. Haller (203) 499-2025

Cool Choice: Michelle LeMoine (203) 499-5828

MotorUp: Michelle LeMoine (203) 499-5828

Retrofit (EO): Roy W. Haller (203) 499-2025

Express Lighting: Michelle Lemoine (203) 499-5828

Small Business: Dennis O'Connor (203) 499-3715

Financing: Roy W. Haller (203) 499-2025

O&M Services: Marissa Westbrook (203) 499-3314

Load Response: Rick Rosa (203) 499-2632

Residential Programs: Chris Ehlert (203) 499-2965

Natural Gas Programs: Roy W. Haller (203) 499-2025

UI Account Managers



2011 Program



Questions?

Thank you!



2011 Program Update

