

Naugatuck River
(Thomaston – Waterbury)
~ 4,000 trout stocked annually
Updated April 2016

Minor Rd.

Below Thomaston dam.

RT 222

RT 8 overpass at end of
Railroad Annex Rd.

Pools above and below dam.

Electric Ave

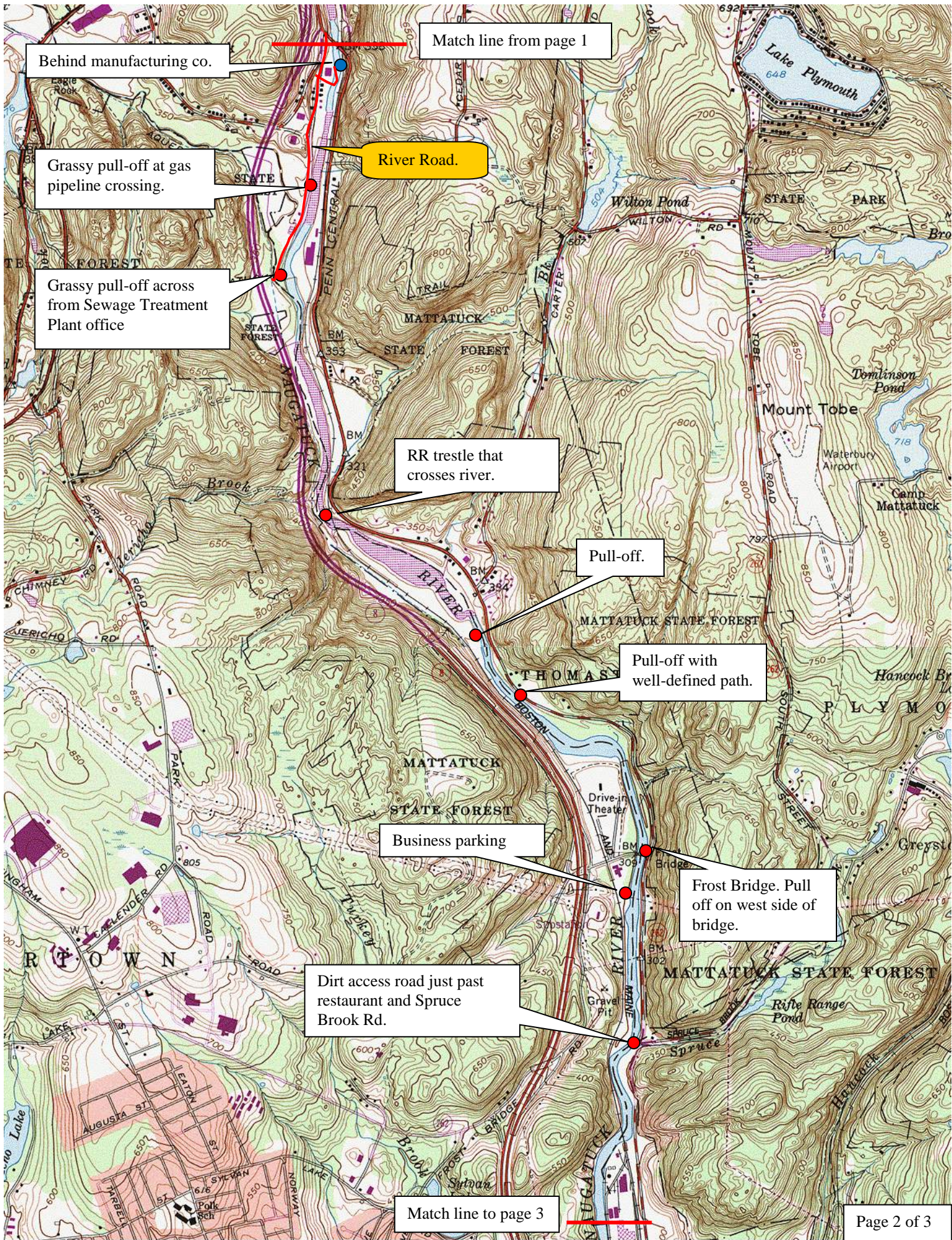
Railroad Street
(Pleasant Street)

Elm Street

Back end of paved lot for the Litchfield
Professional Park on River Street.

RT 6

Match line to page 2



Match line from page 1

Behind manufacturing co.

Grassy pull-off at gas pipeline crossing.

River Road.

Grassy pull-off across from Sewage Treatment Plant office

RR trestle that crosses river.

Pull-off.

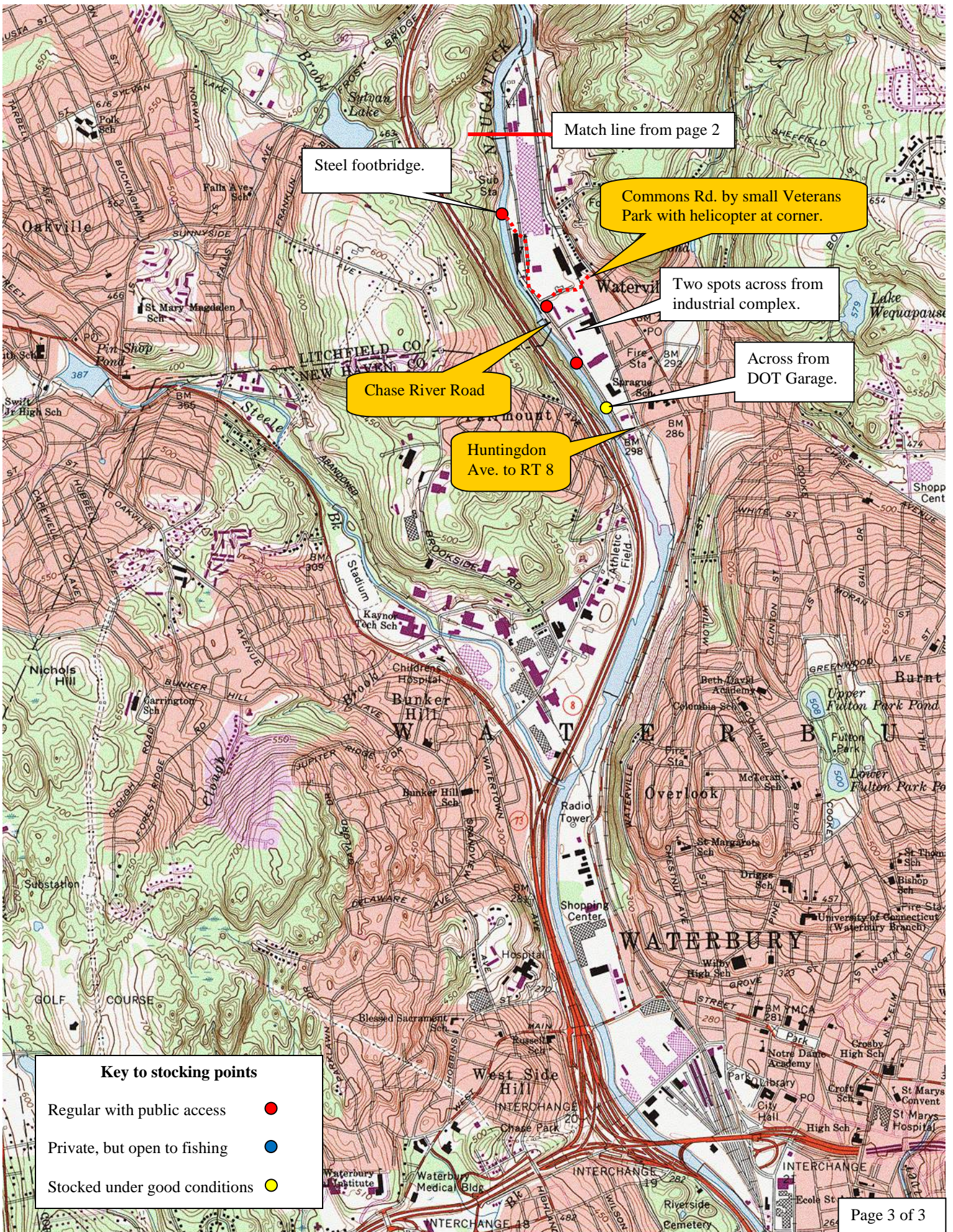
Pull-off with well-defined path.

Business parking

Frost Bridge. Pull off on west side of bridge.

Dirt access road just past restaurant and Spruce Brook Rd.

Match line to page 3



Match line from page 2

Steel footbridge.

Commons Rd. by small Veterans Park with helicopter at corner.

Two spots across from industrial complex.

Across from DOT Garage.

Chase River Road

Huntingdon Ave. to RT 8

Key to stocking points

- Regular with public access ●
- Private, but open to fishing ●
- Stocked under good conditions ●