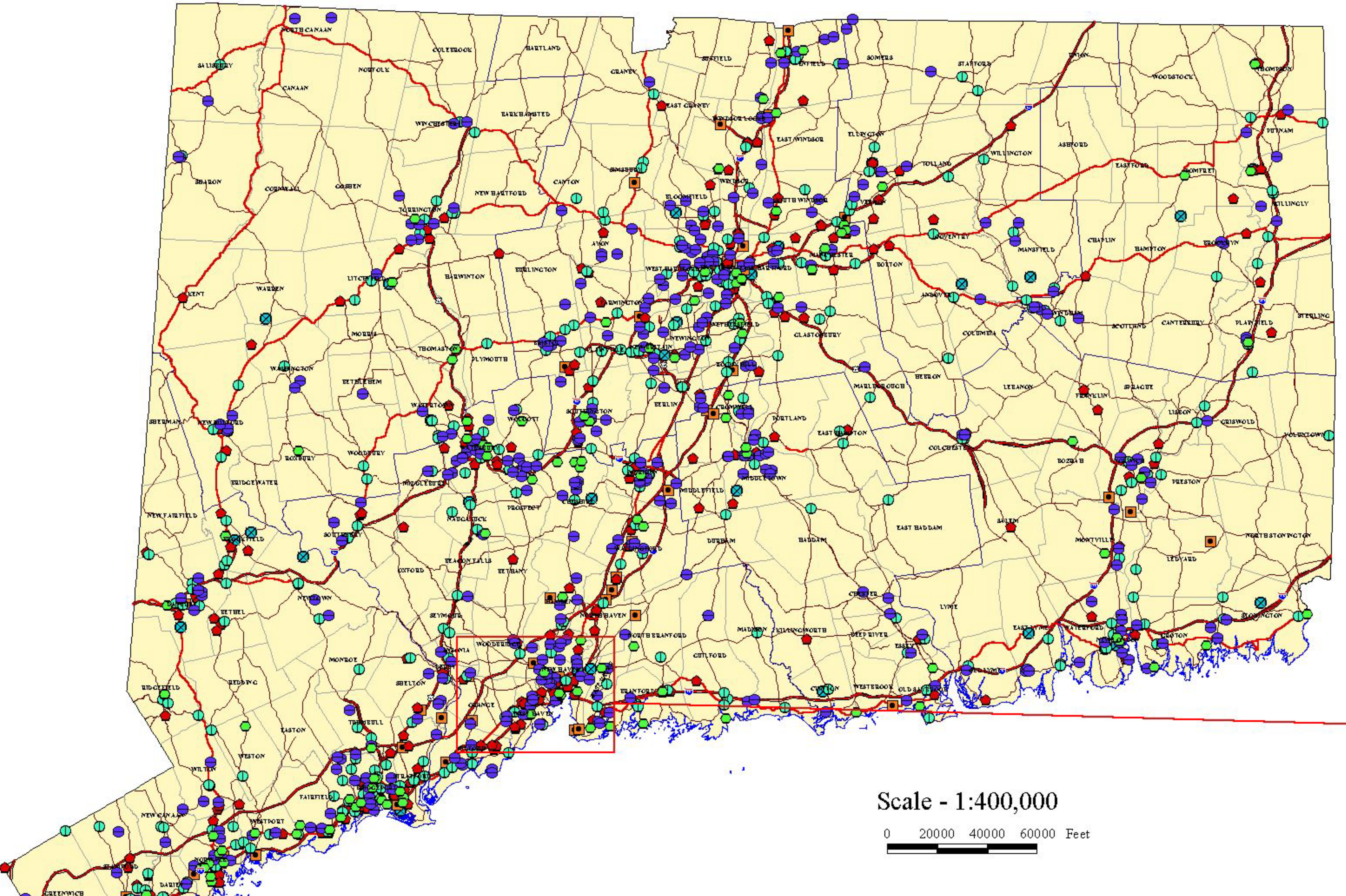


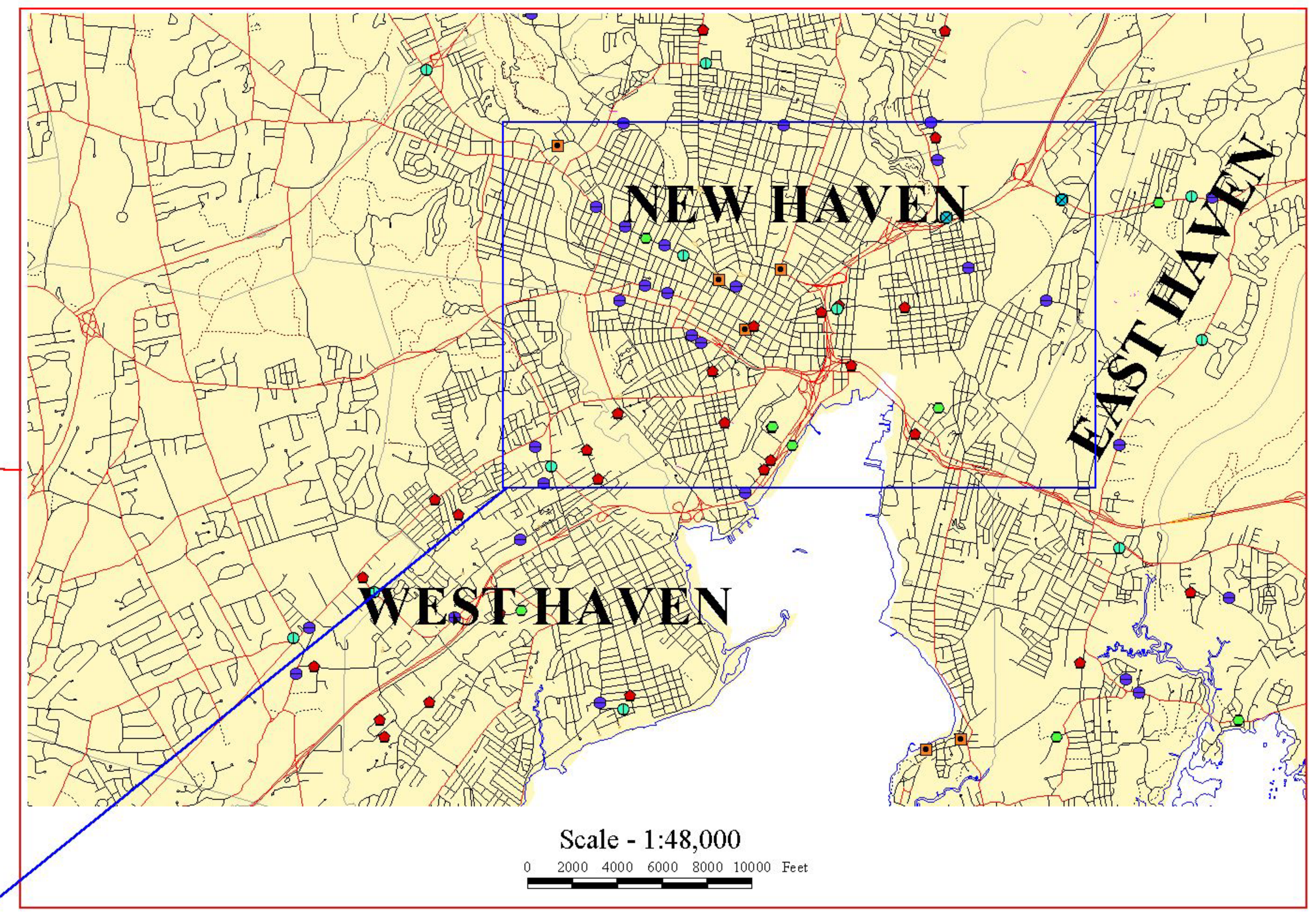
Map 1 Organic Waste Generators Example of Map Scales

Source-Separated Organic Materials (SSOM)
Generator Locations

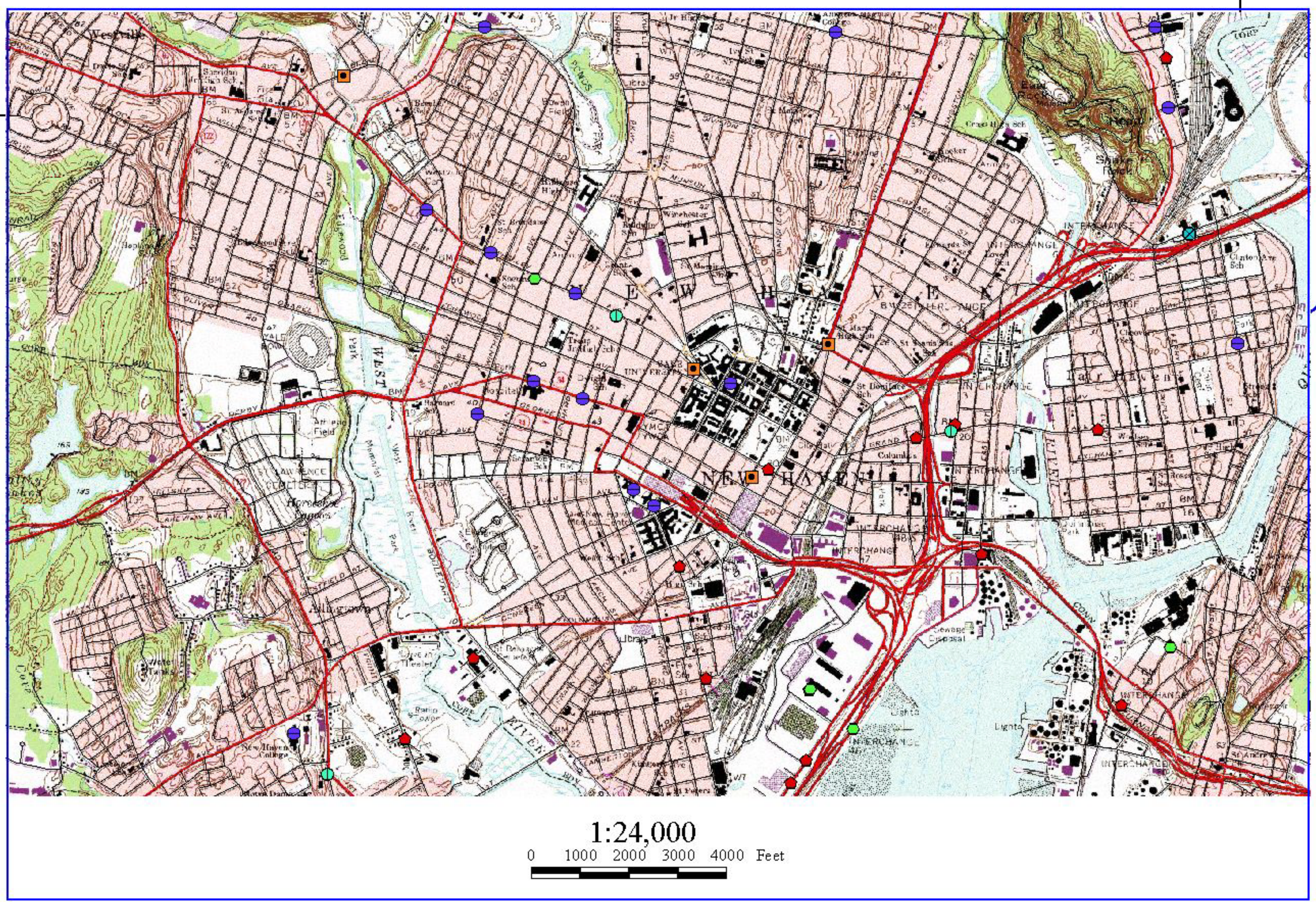
Connecticut Department of Environmental Protection



Scale - 1:400,000
0 20000 40000 60000 Feet



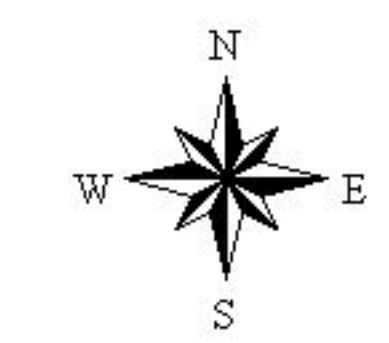
Scale - 1:48,000
0 2000 4000 6000 8000 10000 Feet



1:24,000
0 1000 2000 3000 4000 Feet

Explanation

- | | | |
|---------------------------------|---------------------------|-----------------------------|
| Organic Waste Generators | Roads (CTGIS Data) | Political Boundaries |
| Beverage Manufacturer | Primary Route | State |
| Food Manufacturer | Secondary Route | County |
| Supermarket | Local Road | Town |
| Institution | Unimproved Road | Coastline |
| Resort/Conference Facility | | |
| Wholesale Distributor | | |



This map is one of fourteen maps that were produced as part of a report titled, "Identifying, Quantifying, and Mapping Food Residuals from Connecticut Businesses and Institutions. An Organics Recycling Planning Tool Using GIS", September 2001, funded by the Connecticut Department of Environmental Protection (CTDEP), and prepared by Draper/Lennon Inc. and Atlantic Geoscience Corp. The SSOM generator locations were derived from address matching with geo-coded street data. CTDEP GIS basemap data was used for political boundaries and detailed road maps. Small scale roads were selected by size from the 1994 TIGER roads data. Large scale roads (1:24,000+) were obtained by the CTDEP GIS Center. Generator data were obtained between October 2000 and May 2001, using existing databases, surveys and direct contact.