

# Long Island Sound Blue Plan – Potential Data Products Review

## Map Book Table of Contents:

### *Recreational Fishing and Waterfowl Hunting*

#### **Recreational Fishing**

- Fish and Shellfish Resources > Recreational Fishing
  1. LIS Recreational Fishing Activity – 2016
  2. Fishing – Northeast Region 2012
  3. Popular Fishing Areas
  4. Target Fish Species – Northeast Region, 2012
  5. Bait, Tackle & Licensing

#### **Waterfowl Hunting**

- Living Resources > Animals > Birds
  6. Waterfowl Habitat
- Recreation & Tourism > Waterfowl Hunting
  7. Connecticut Hunting Areas

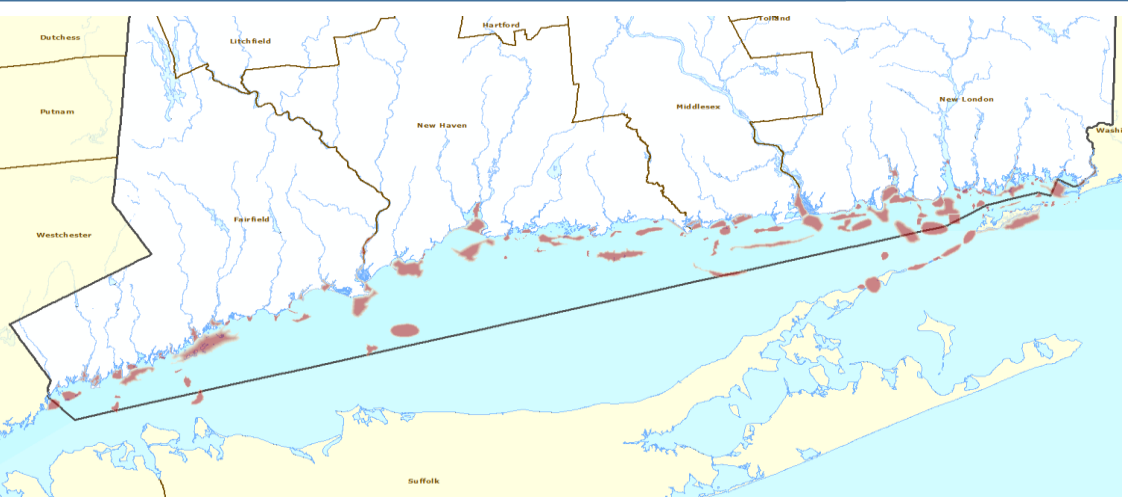
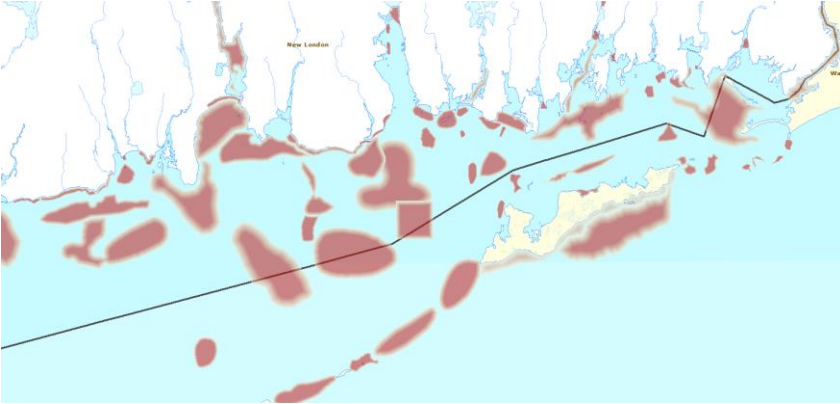
#### **Recreational Fishing & Waterfowl Hunting**

- Recreation & Tourism > Recreational Sailing, Boating, & Kayaking
  8. All Recreational Boater Activities
  9. Boat Launches
  10. Coastal Access Sites
  11. Water Trails

# LIS Recreational Fishing Activity - 2016

CT DEEP Fisheries

Source: CT DEEP Marine Fisheries, updated 2016



Recreational Fishing Activity

# LIS Recreational Fishing Activity - 2016



**Blue Plan Sector(s):** TBD

**Summary Description:** This layer shows general areas along CT shoreline and in CT waters of Long Island Sound known to be popular saltwater recreational fishing areas based upon CT Marine Fisheries Division staff knowledge and aerial surveys in the mid-1980's. The layer was created in 2014 and updated in 2016. This layer contains polygons derived from two sources: 1) MFD Staff knowledge, 2) Aerial surveys conducted in 1986 and 1987. Data from both sources are displayed together for the most comprehensive representation of available information. CT DEEP has received numerous requests for GIS map layers of areas in Long Island Sound that are important for recreational fishing. Areas in this layer are represented as polygons; the polygons are NOT meant to be interpreted as precisely accurate but as general locations (recommended zoom level 1:25,000 - 1:100,000). Polygons were created with digital images of navigational charts created in 2003; if different background or basemap layers are added, features may not line up (the shoreline changes over time and navigational aids are sometimes moved). Absence of a polygon does not mean an area is unimportant; there may be other areas important to recreational fishing as well. No assurance of catching fish is implied.(VERSION variable = MFD Staff 2003) In 2003, CT DEEP Marine Fisheries Staff marked nautical charts to show areas along the CT shoreline and in CT waters of Long Island Sound they knew to be popular fishing areas for saltwater recreational anglers. These polygons were digitized and the marine fish species known to attract recreational fishing effort were noted. No attempt was made to digitized areas in NY waters of Long Island or Fishers Island Sounds.(VERSION variable = Aerial Survey 1986 and 1987) Areas important to marine recreational fishing in Long Island Sound were also identified by aerial surveys the Department conducted in the mid-1980's. In 2014, GIS staff collaborated with biologists who participated in the aerial surveys to digitized features on NOAA navigational charts to approximate recreational fishing areas sampled by the historical aerial surveys. Data used to create these polygons include aerial surveys conducted on 21 days in 1986 and 4 days in 1987, primarily along the Connecticut coast, Connecticut waters of Long Island Sound and the vicinity of Race Point, New York.(VERSION variable = MFD Staff 2016) In 2016, CT DEEP Marine Fisheries Staff reviewed the compilation of MFD staff-identified polygons and Aerial Survey polygons and added areas and/or species that had been missed, or that had become important more recently, to update the layer. Staff members edited the layers directly, in ArcMap and in ArcGIS online. Areas in the immediate vicinity of Fishers Island that are known to be important to CT-based recreational anglers were added.

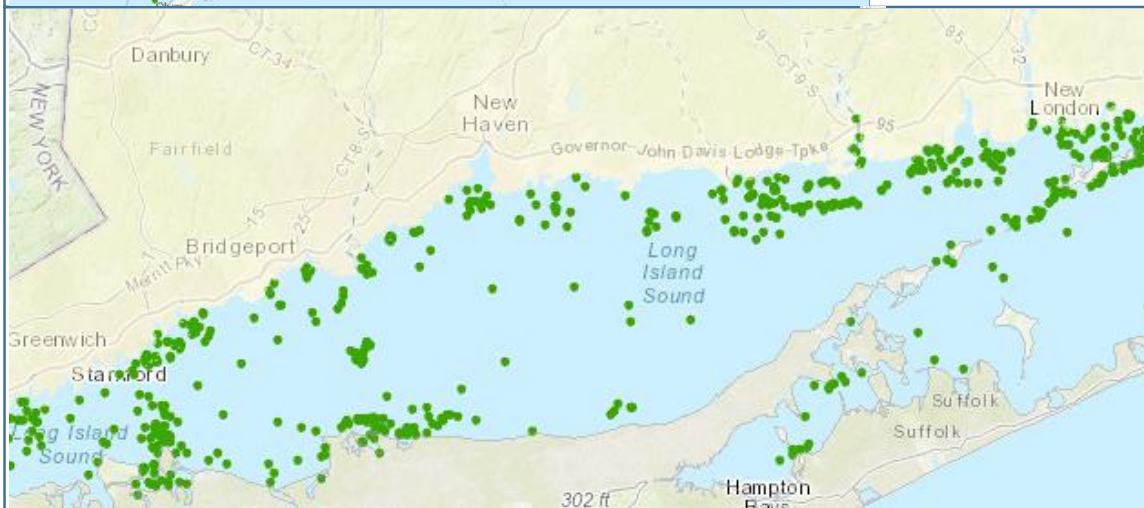
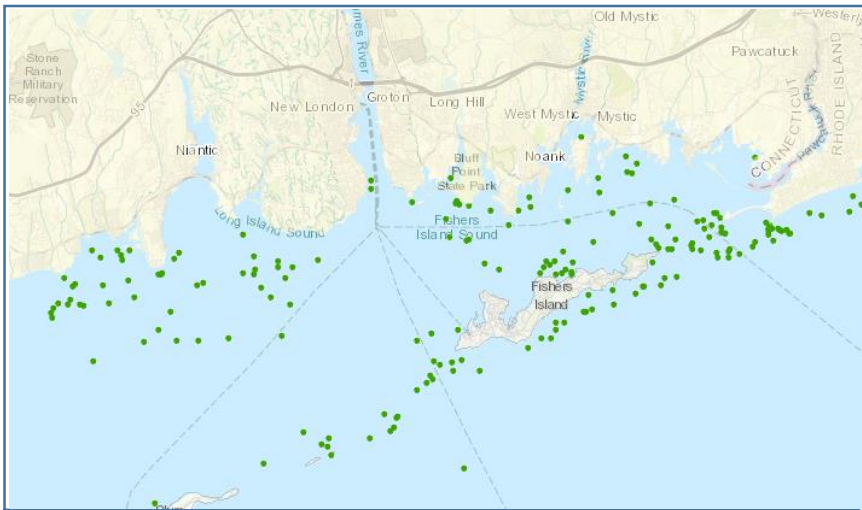
**Full Description:** Contact CTDEEP marine Fisheries for FGDC metadata: [deep.marine.fisheries@ct.gov](mailto:deep.marine.fisheries@ct.gov)

**Access Instructions:** TBD

# Fishing – Northeast Region 2012

(New York Geographic Information Gateway)

Source: Kate Longley, SeaPlan



Legend:



# Fishing – Northeast Region, 2012



**Blue Plan Sector(s):** Fish & Shellfish Resources > Recreational Fishing

**Summary Description:** *Abstract:* This layer shows locations where participants in the 2012 Northeast Recreational Boater Survey, conducted by SeaPlan and the Northeast Regional Ocean Council (NROC), participated in fishing activities. Survey participants plotted activity points using an interactive mapping tool. The 2012 Northeast Recreational Boater Survey was conducted by SeaPlan, the Northeast Regional Ocean Council (NROC), states' coastal agencies, marine trade associations composed of many private industry representatives, and the First Coast Guard District. The methodology for the 2012 Northeast Recreational Boater Survey follows a protocol similar to the 2010 Massachusetts Survey with modifications based on the lessons learned and recommendations suggested in the Massachusetts Survey Final Report. The methodology consists of surveying a random sample of selected boat owners throughout the Northeast through a series of monthly online surveys. The surveying period lasted throughout the 2012 boating season (May 1 through October 31, 2012), which was identified by the advisory committee (consisting of NROC and representatives from the recreational boating industry). The project team decided to use a random sample survey approach because it successfully gathered statistically robust economic and spatial data on recreational boating activity by Massachusetts registered boaters during the 2010 boating season. This was also the only approach that would allow for the calculation of statistically robust economic impact estimates for both the states and the region, which was identified as a priority (along with spatial data) by both NROC and the boating industry.

**Full Description:** <http://opdgig.dos.ny.gov/geoportal/catalog/search/resource/detailsnoheader.page?uuid={D49054AF-E1C2-49EF-8177-AC55B0001BA0}>

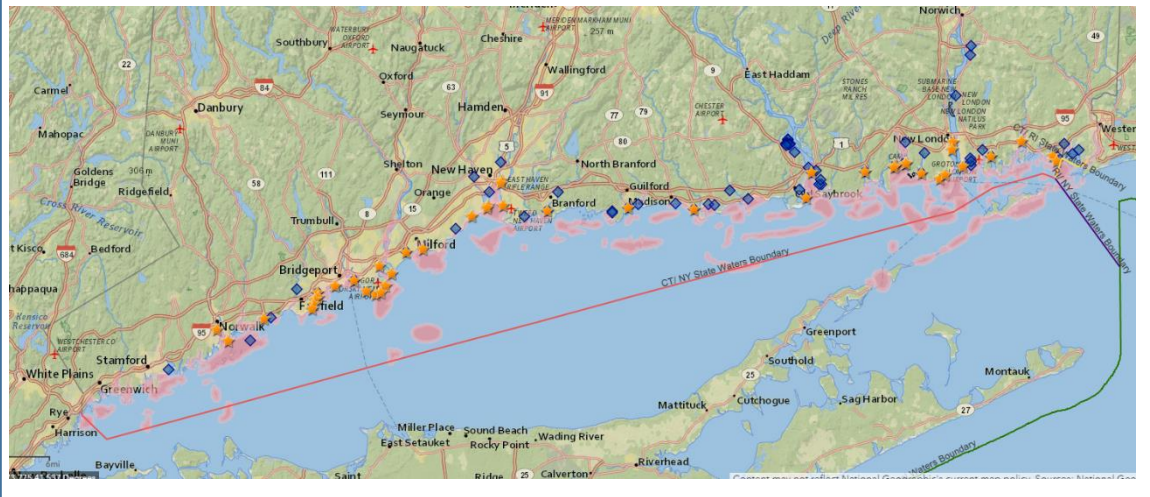
**Access Instructions:** Go to <http://opdgig.dos.ny.gov/#/map>. Go to Recreation > Water-Based > Fishing – Northeast Region, 2012



# Popular Fishing Areas

## CTDEEP Saltwater Fishing Resource Map

**Source:** CTDEEP, NOAA, RI DEM, NY DEC



**State and Federal Waters Boundary Lines**

- CT/ NY State Waters Boundary
- CT/ RI State Waters Boundary
- State/ Federal Waters Boundary
- RI/ NY State Waters Boundary

**Security Exclusion**



**Enhanced Opportunity Shore Fishing Sites**



**Crabbing Access**



**Wrecks**



**Popular Places to Fish**



# Popular Fishing Areas



**Blue Plan Sector(s):** Fish & Shellfish Resources/Aquaculture/Recreational Fishing

**Summary Description:** Make sure that you are familiar with current sport fishing regulations (open seasons, size requirements, catch limits). Check the Angler's Guide for summaries of rules and regulations governing sport fishing in Connecticut. You can also view a separate summary of marine sport fishing regulations. For legal purposes, the Regulations of Connecticut State Agencies and the General Statutes of Connecticut should be consulted. The boundary of Connecticut state waters is displayed on the map. Note that recreational fishing sizes and limits may be different in Rhode Island and New York state waters. Check the RI DEM Saltwater Fishing website and the NY DEC Marine Fishing website for state regulations. State waters extend 3 miles offshore from the coastline. Waters between 3 and 200 miles offshore are under federal regulations. Note locations of Security Zones with restricted access (Millstone Nuclear Power Plant and New London Harbor). No fishing is allowed within these zones.

Enhanced Opportunity Shore Fishing sites are locations where shore anglers are allowed to keep smaller sizes of scup and summer flounder.

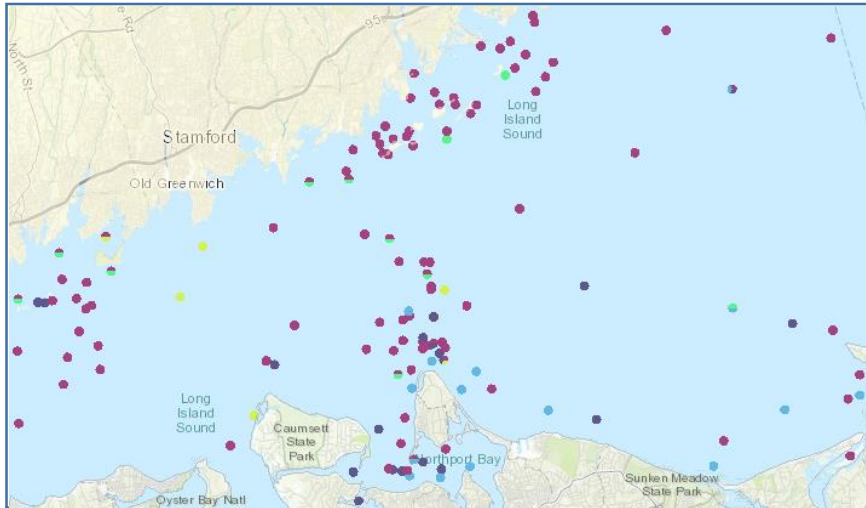
Popular Places to Fish were compiled by CT-DEEP Marine Fisheries Division Staff. No assurance of catching fish is implied. There may be additional areas important for recreational fishing that are not included. Check with local bait and tackle shops for current information on which fish are biting.

Wrecks often are popular fishing locations, although these wrecks have not specifically been evaluated by Marine Fisheries staff for this map. This listing of wrecks is maintained by NOAA. Note that this is not a comprehensive record of wrecks. Not to be used for navigation.

Crabbing Access sites come from the CT Coastal Access Guide. No assurance of catching crabs is implied. There may be additional areas important for recreational crabbing that are not included. For more information about blue crab fishing in Connecticut, visit the CT-DEEP website

**Full Description:** n/a

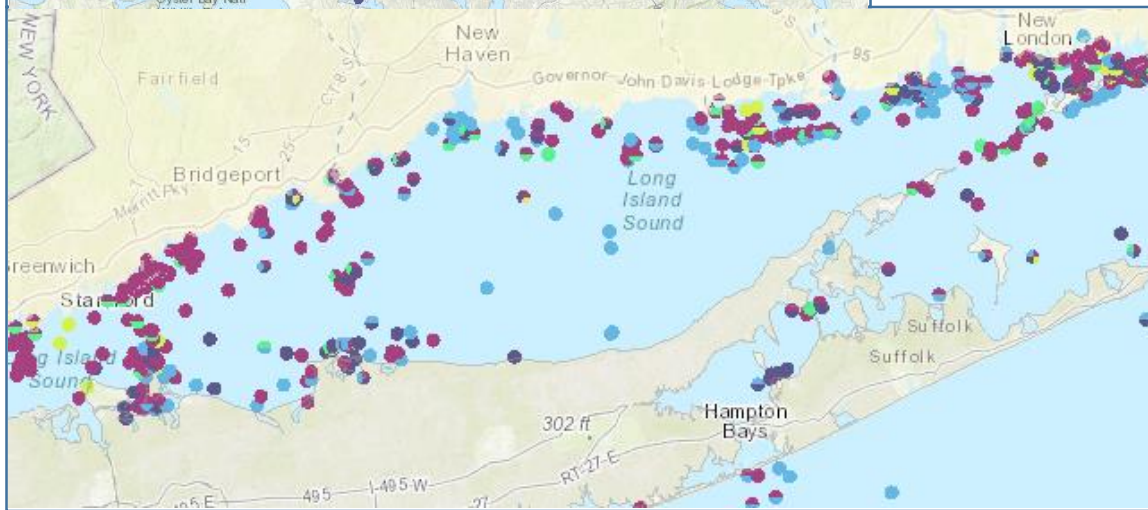
**Access Instructions:** <https://ctdeep.maps.arcgis.com/apps/MapSeries/index.html?appid=719fe5662ac145f3b89fe8daf6b86042>



## Target Fish Species – Northeast Region, 2012

*(New York Geographic Information Gateway)*

**Source:** Kate Longley, SeaPlan



### Legend:

-  Fishing: Striped Bass
-  Fishing: Bluefish
-  Fishing: Flounder
-  Fishing: Atlantic Cod
-  Fishing: Haddock
-  Fishing: Mackerel
-  Fishing: Scup
-  Fishing: Tautog
-  Fishing: Tuna
-  Fishing: Shark
-  Fishing: Billfish
-  Fishing: Wahoo



# Target Fish Species – Northeast Region, 2012



**Blue Plan Sector(s):** Fishing & Shellfish Resources > Recreational Fishing

**Summary Description:** *Abstract:* This layer shows locations where participants in the 2012 Northeast Recreational Boater Survey, conducted by SeaPlan and the Northeast Regional Ocean Council (NROC), fished for specific target species during boating trips. Survey participants plotted activity points using an interactive mapping tool. If a participant indicated that they were fishing, they could indicate which species of fish they were targeting. The 2012 Northeast Recreational Boater Survey was conducted by SeaPlan, the Northeast Regional Ocean Council (NROC), states' coastal agencies, marine trade associations composed of many private industry representatives, and the First Coast Guard District. The methodology for the 2012 Northeast Recreational Boater Survey follows a protocol similar to the 2010 Massachusetts Survey with modifications based on the lessons learned and recommendations suggested in the Massachusetts Survey Final Report. The methodology consists of surveying a random sample of selected boat owners throughout the Northeast through a series of monthly online surveys. The surveying period lasted throughout the 2012 boating season (May 1 through October 31, 2012), which was identified by the advisory committee (consisting of NROC and representatives from the recreational boating industry). The project team decided to use a random sample survey approach because it successfully gathered statistically robust economic and spatial data on recreational boating activity by Massachusetts registered boaters during the 2010 boating season. This was also the only approach that would allow for the calculation of statistically robust economic impact estimates for both the states and the region, which was identified as a priority (along with spatial data) by both NROC and the boating industry.

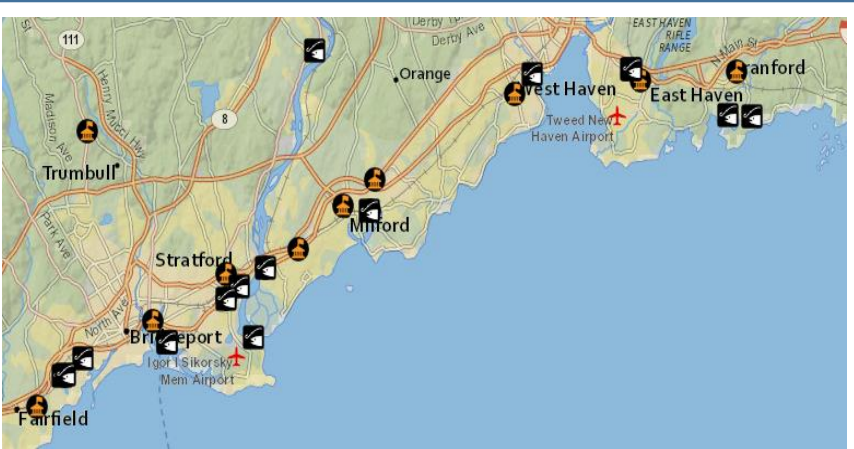
**Full Description:** <http://opdgig.dos.ny.gov/geoportal/catalog/search/resource/detailsnoheader.page?uuid={754BD2D6-7354-452F-96CD-FCD55FB2E253}>

**Access Instructions:** Go to <http://opdgig.dos.ny.gov/#/map>. Go to Recreation > Water Based > Target Fish Species – Northeast Region, 2012

# Bait, Tackle & Licensing

## CTDEEP Saltwater Fishing Resource Map

Source: CTDEEP



Bait and Tackle Shops



Sportsmen Licensing Agents



# Bait, Tackle & Licensing



**Blue Plan Sector(s)**: Fish & Shellfish Resources/Aquaculture/Recreational Fishing

**Summary Description**: Make sure that you are familiar with current sport fishing regulations (open seasons, size requirements, catch limits). Check the Angler's Guide for summaries of rules and regulations governing sport fishing in Connecticut. You can also view a separate summary of marine sport fishing regulations. For legal purposes, the Regulations of Connecticut State Agencies and the General Statutes of Connecticut should be consulted.

Bait and Tackle Shops are great sources for current information on local fishing activity. You can also check CT-DEEP's weekly fishing report (April-November) for recent conditions. The CT-DEEP maintains this list of bait and tackle shops to enhance public access to information and help the public understand fishing and its related equipment/ bait. The CT-DEEP is not recommending these resources over any others and recognizes these represent only a partial listing of resources on this subject.

Saltwater fishing licenses are required for anyone age 16 or older, fishing from shore or from a boat in the marine district of this state or landing marine fish or bait species in Connecticut taken from offshore waters. Saltwater fishing licenses can be purchased from the sportsmen licensing agents shown on this map. Saltwater fishing licenses can also be purchased online, through the Online Sportsmen Licensing System.

**Full Description**: n/a

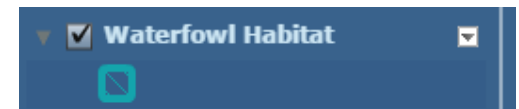
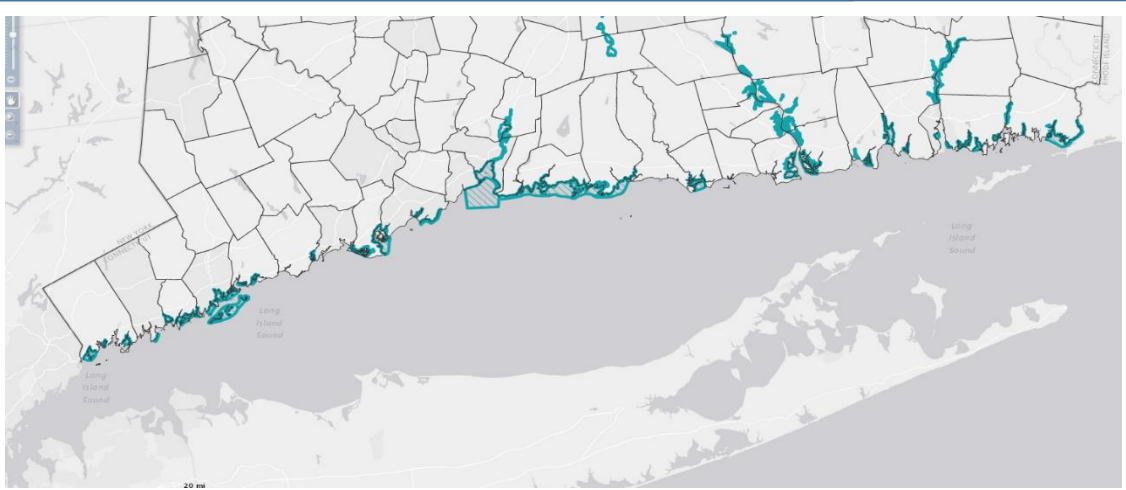
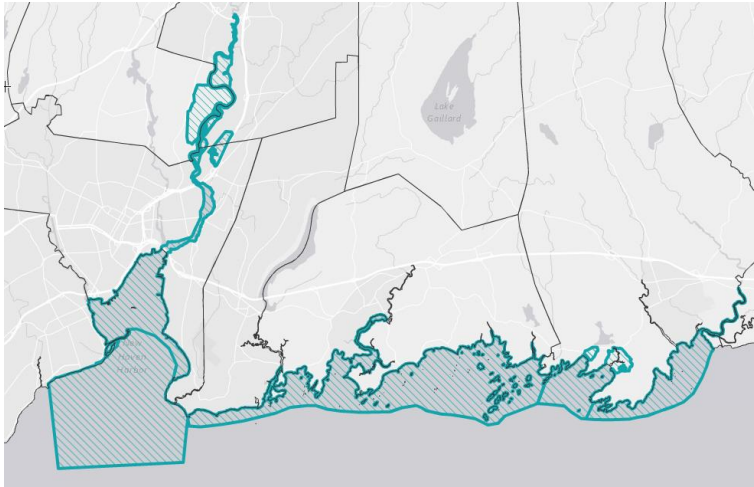
**Access Instructions**:

<https://ctdeep.maps.arcgis.com/apps/MapSeries/index.html?appid=719fe5662ac145f3b89fe8daf6b86042>

# Waterfowl Habitat

The Aquaculture Mapping Atlas

**Source:** State of Connecticut, Department of Environmental Protection



# Waterfowl Habitats



**Blue Plan Sector(s):** Living Resources/Animals/Birds

**Summary Description:** **Abstract:** Migratory Waterfowl is a 1:24,000-scale, polygon feature-based layer that depicts the concentration areas of migratory waterfowl at specific locations within Connecticut. Paul Merola, former DEP Wildlife Biologist, and Greg Chasko, DEP Wildlife Biologist, identified the migratory waterfowl concentration areas based on the Northeast Coastal Areas Study, Joseph Dowhan, 1991 (see Supplemental Information) as well as by using midwinter surveys, breeding surveys and personal observations. The concentration areas are primarily found along the shoreline and the lower tributaries and wetlands of major Connecticut rivers. In addition to depicting the concentration areas, the potential waterfowl species associated with each polygon have been identified and are listed in the attribute table as boolean values indicating their presence or absence. The intent of this datalayer is to assist in the identification of migratory waterfowl resource areas in the event of an oil spill or other condition that might be a threat to waterfowl species. This layer identifies conditions at a particular point in time. It is not updated and it is not a complete representation of all areas of migratory waterfowl in Connecticut. **Purpose:** Migratory Waterfowl is 1:24,000-scale data. It depicts concentration areas of migratory waterfowl in Connecticut. The intent of this datalayer is to assist in the identification of migratory waterfowl resource areas in the event of an oil spill or other condition that might be a threat to waterfowl species. This layer is not intended for maps printed at map scales greater or more detailed than 1:24,000 scale (1 inch = 2,000 feet.) This layer was produced in conjunction with a study prepared for the U.S. Fish and Wildlife Service. The results of the study are detailed in the final report entitled "Final Report Northeast Coastal Areas Study: Significant Coastal Habitats of Southern New England and Portions of Long Island, New York", dated August 1991, authored by Joseph Dowhan, U.S. Fish and Wildlife Service, Northeast Estuary Office, Charlestown, Rhode Island. The report can be accessed online at <http://training.fws.gov/library/pubs5/necas/begin.htm>.

**Full Description:** [http://www.cteco.uconn.edu/metadata/dep/document/MIGRATORY\\_WATERFOWL\\_FGDC\\_Plus.htm](http://www.cteco.uconn.edu/metadata/dep/document/MIGRATORY_WATERFOWL_FGDC_Plus.htm)

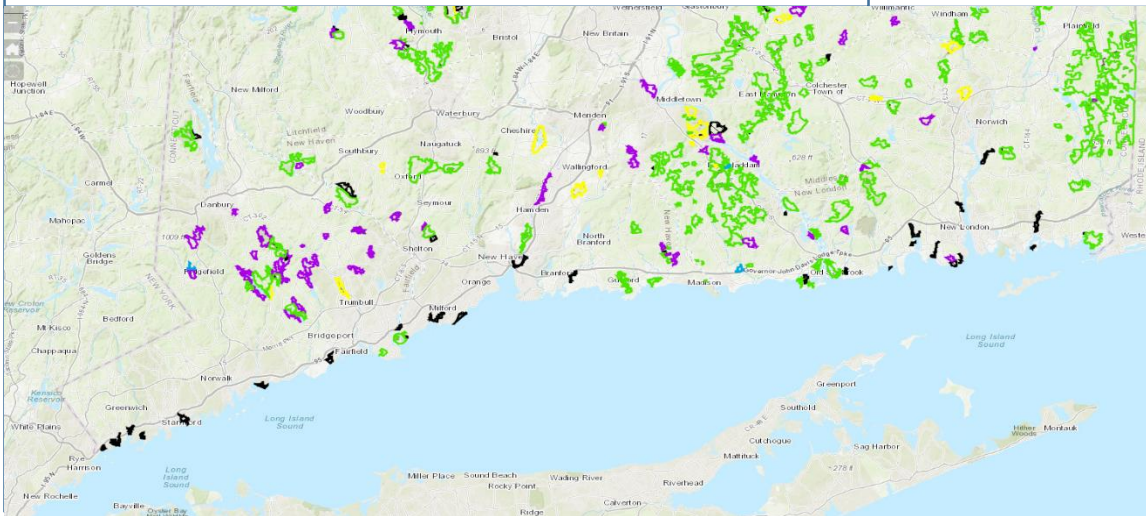
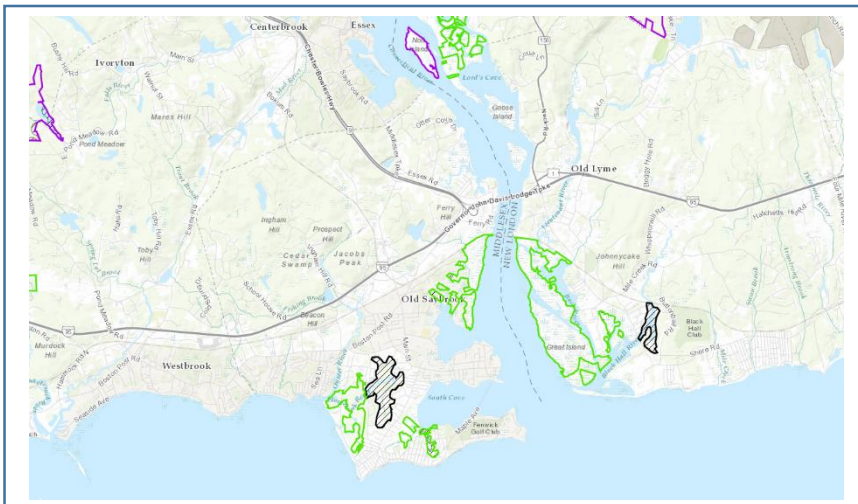
**Access Instructions:** <http://clear3.uconn.edu/aquaculture/>, scroll down to Waterfowl Habitat.








# Connecticut Hunting Areas

## CTDEEP Hunting Area Viewer




Source: CT DEEP



### Areas Open to Hunting

-  Hunting Area
-  Permit-Required Hunting Area
-  Designated Deer Bowhunting Only Area
-  Archery Only
-  Public Hunting Easement

### Areas Closed to Hunting

-  500 Foot Boundary
-  Closed to Hunting
-  Waterfowl Closure Area



## Connecticut Hunting Areas

**Blue Plan Sector(s)**: Recreation and Tourism/Waterfowl Hunting

**Summary Description**: The State of Connecticut offers an array of public hunting opportunities. All public hunting areas can now be viewed using the CTDEEP interactive Hunting Maps tool. Each public hunting area is open for specific types of hunting and may or may not have special restrictions. This map allows the user to interactively select a public hunting location from home as well as in the field with a smartphone, and learn about specific hunting opportunities across the state.

The interactive map can be used to identify permitted hunting activities (e.g., waterfowl, small game, deer, pheasant, etc.) and to identify closure areas (buffers, general closures, and waterfowl specific closures.)

As always, please refer to the current Connecticut Hunting and trapping Guide and the Hunting page on the DEEP website for the most up to date information on all public hunting areas. Special tags, stamps, and permits are needed for hunting some species. Consult season descriptions for the species you are hunting and always obey all postings while in the field.

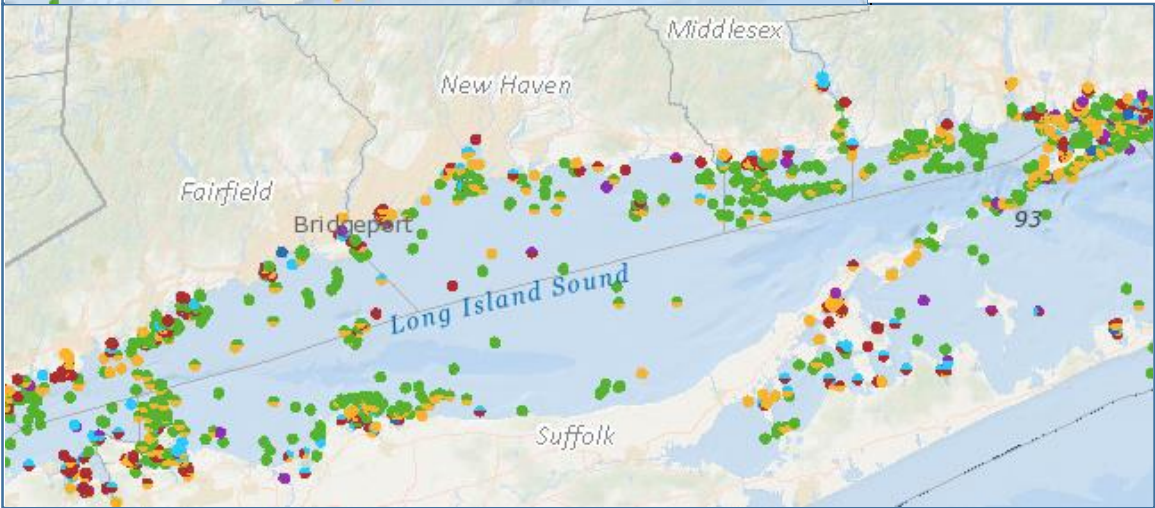
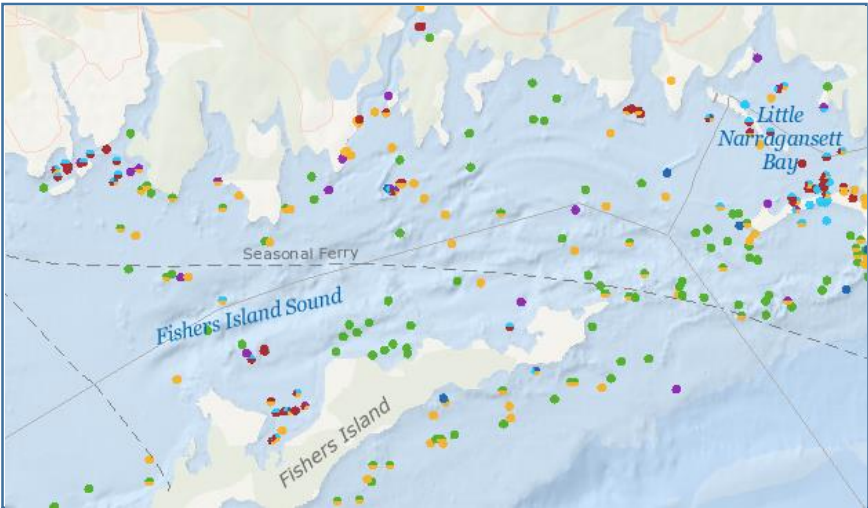
**Full Description**: n/a – more general hunting info can be found here:  
[http://www.ct.gov/deep/cwp/view.asp?a=2700&q=323414&deepNav\\_GID=1633](http://www.ct.gov/deep/cwp/view.asp?a=2700&q=323414&deepNav_GID=1633)

**Access Instructions**:  
<http://ctdeep.maps.arcgis.com/apps/webappviewer/index.html?id=58663e71ca114e439f7f3473836db929>

# All Recreational Boater Activities

(Northeast Ocean Data Portal)

**Source:** SeaPlan, 2012 Northeast Recreational Boater Survey



## All Recreational Boater Activities

- Fishing
- Viewing
- Diving
- Swimming
- Relaxing
- Other



## All Recreational Boater Activities



**Blue Plan Sector(s)**: Recreation & Tourism > Recreational Sailing/Boating/Kayaking

**Summary Description**: The Northeast Recreational Boater Activities Layer depicts activity points plotted by participants in the 2012 Northeast Recreational Boater Survey, which was conducted by Sea Plan, the Northeast Regional Ocean Council (NROC) states' coastal agencies, marine trade associations composed of many private industry representatives, and the First Coast Guard District. Boaters were able to identify locations where they partook in specific activities related to recreational boating, such as fishing, wildlife viewing, SCUBA diving, and swimming. The methodology consists of surveying a random sample of selected boat owners throughout the Northeast through a series of monthly online surveys. The surveying period lasted throughout the 2012 boating season (May 1 through October 31, 2012).

**Full Description**:

<http://www.northeastoceandata.org/files/metadata/Themes/Recreation/RecreationalBoaterActivities.pdf>

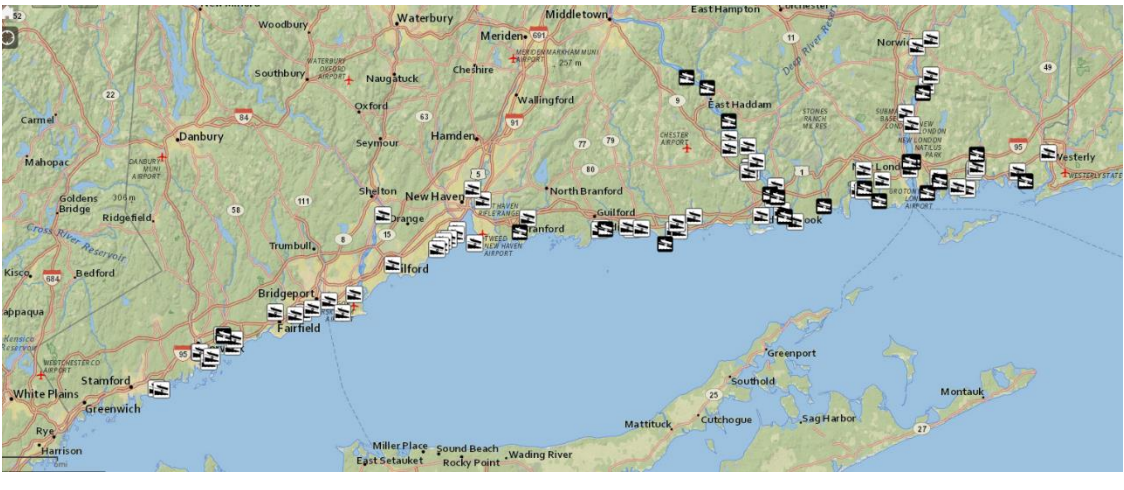
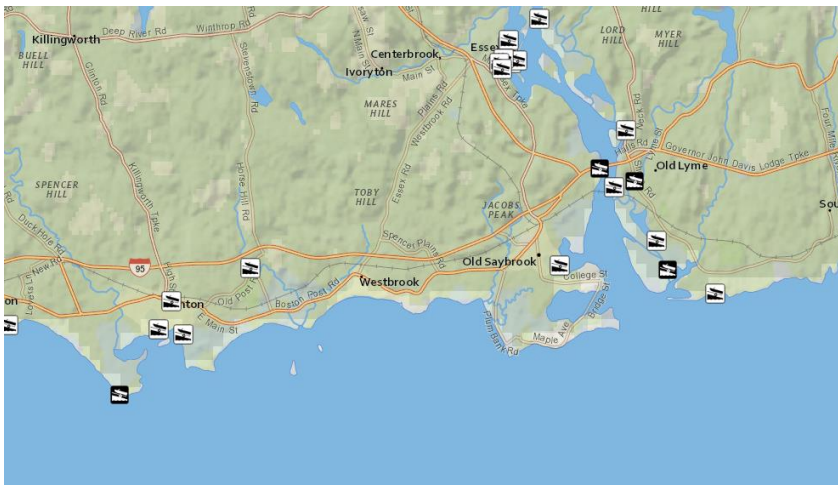
**Access Instructions**: Go to <http://www.northeastoceandata.org/data-explorer/>. Go to Recreation > All Recreational Boater Activities.



# Boat Launches

## CTDEEP Saltwater Fishing Resource Map

Source: CTDEEP



State Boat Launches



Town Owned and Privately Owned Boat Launches





## Boat Launches



**Blue Plan Sector(s)**: Recreation & Tourism/Recreational Sailing/Boating/Kayaking

**Summary Description**: Make sure that you are familiar with current sport fishing regulations (open seasons, size requirements, catch limits). Check the Angler's Guide for summaries of rules and regulations governing sport fishing in Connecticut. You can also view a separate summary of marine sport fishing regulations. For legal purposes, the Regulations of Connecticut State Agencies and the General Statutes of Connecticut should be consulted.

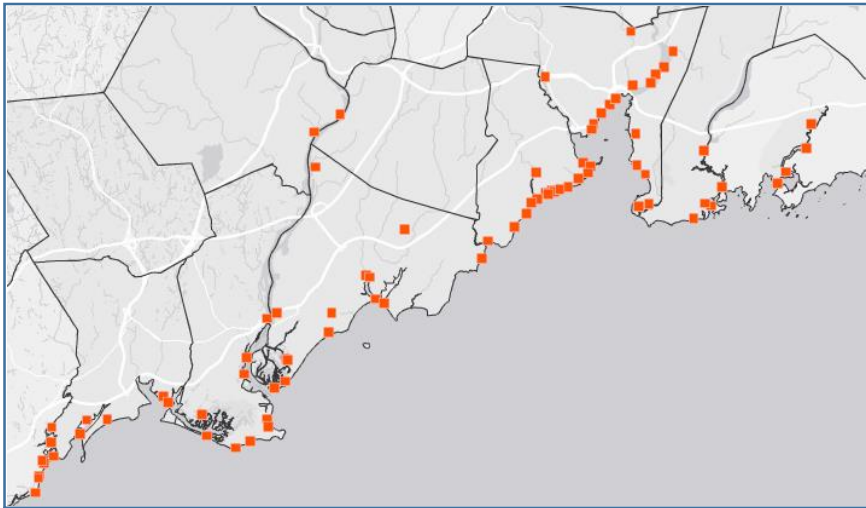
More information about Trailered and Car Top/ Carry-In Boat Launches owned and/ or operated by the CT DEEP is available in the Connecticut Boaters Guide and on the CT-DEEP website. Boat launches shown in this map provide access to Long Island Sound.

Town-owned and privately owned boat launches are also included in this map. These listings come from the CT Coastal Access Guide.

**Full Description**: n/a

**Access Instructions**:

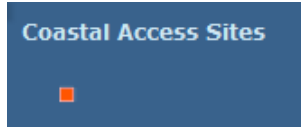
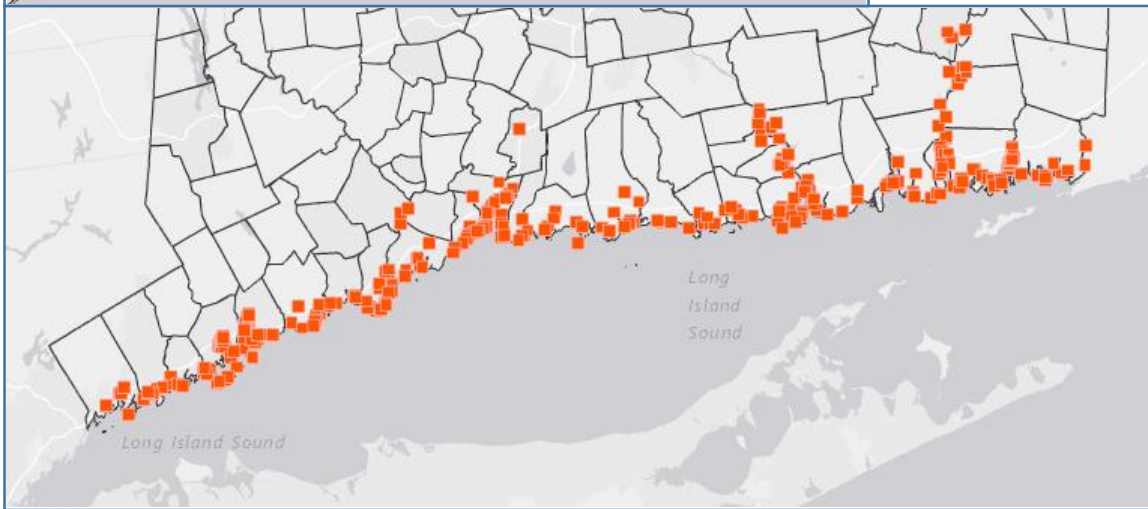
<https://ctdeep.maps.arcgis.com/apps/MapSeries/index.html?appid=719fe5662ac145f3b89fe8daf6b86042>



## Coastal Access Sites

(CT Aquaculture Mapping Atlas)

Source: CT DEEP



## Coastal Access Sites



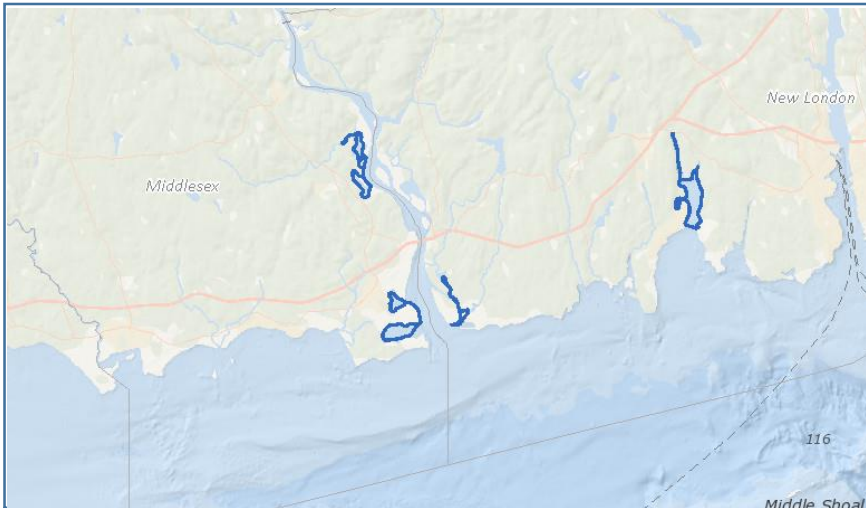
**Blue Plan Sector(s)**: Recreation & Tourism > General

**Summary Description**: This layer displays public coastal access sites along the Connecticut shore. The general public may freely use these lands and waters, whether they are beach, rocky shore, or open water, for traditional public trust uses such as fishing, shellfishing, boating, sunbathing, or simply walking along the beach. In Connecticut, a line of state Supreme Court cases dating back to the earliest days of the republic confirm that private ownership ends at mean high water line, and that the state holds title to the lands waterward of mean high water, subject to the private rights of littoral or riparian access.

**Full Description**:

<https://clear3.uconn.edu/arcgis/rest/services/Maps/ShellfishWebApp2013/MapServer/5>;  
[http://www.ct.gov/deep/cwp/view.asp?a=2705&q=323788&deepNav\\_GID=1635](http://www.ct.gov/deep/cwp/view.asp?a=2705&q=323788&deepNav_GID=1635)

**Access Instructions**: Go to <https://clear3.uconn.edu/viewers/shellfish/>. Go to Coastal Access Sites



## Water Trails

*(Northeast Ocean Data Portal)*

**Source:** Bronx River Alliance of Connecticut, Rhode Island Blueways, The Nature Conservancy, Maine Island Trail Association

## Water Trails



## Water Trails



**Blue Plan Sector(s):** Recreation & Tourism > Recreational Sailing/Boating/Kayaking

**Summary Description:** This data set shows the coastal water trails for the states of Connecticut, Maine, New York, and Rhode Island. (Here displayed primarily for the Long Island Sound). A water trail is an officially designated water route, or blueway, that is maintained by an agency or association that manages the trail location and any pertinent information. Water trails are coastal if they are located within or have an endpoint in a saline water body. Information on water trails was obtained from a number of different sources which manage individual trails or which aggregate information about multiple trails in one virtual location. Source data included online web maps, static maps in pdf form, textual descriptions, and direct conversations with partnering agencies.

### **Full Description:**

<http://www.northeastoceandata.org/files/metadata/Themes/Recreation/WaterTrails.pdf>

**Access Instructions:** Go to <http://www.northeastoceandata.org/data-explorer/>. Go to Recreation > Water Trails