

### Recreational Sailing, Boating, Kayaking

- Board and Paddle Events
- Boat Launches (NODP)
- Boat launches (CT DEEP)
- Surface water activities
- Water Trails

### Wildlife Watching, Tours, and Viewing

- Wildlife viewing – Northeast region, 2012
- Wildlife and sightseeing activities
- Target wildlife viewing species

### Recreation and Tourism – General

- Coastal access sites
- Theme – Recreation

### Beachgoing and Other Non-Consumptive Uses

- Swimming – northeast region, 2012
- Beaches
- Relaxing – Northeast Region, 2012
- Shore-based activities

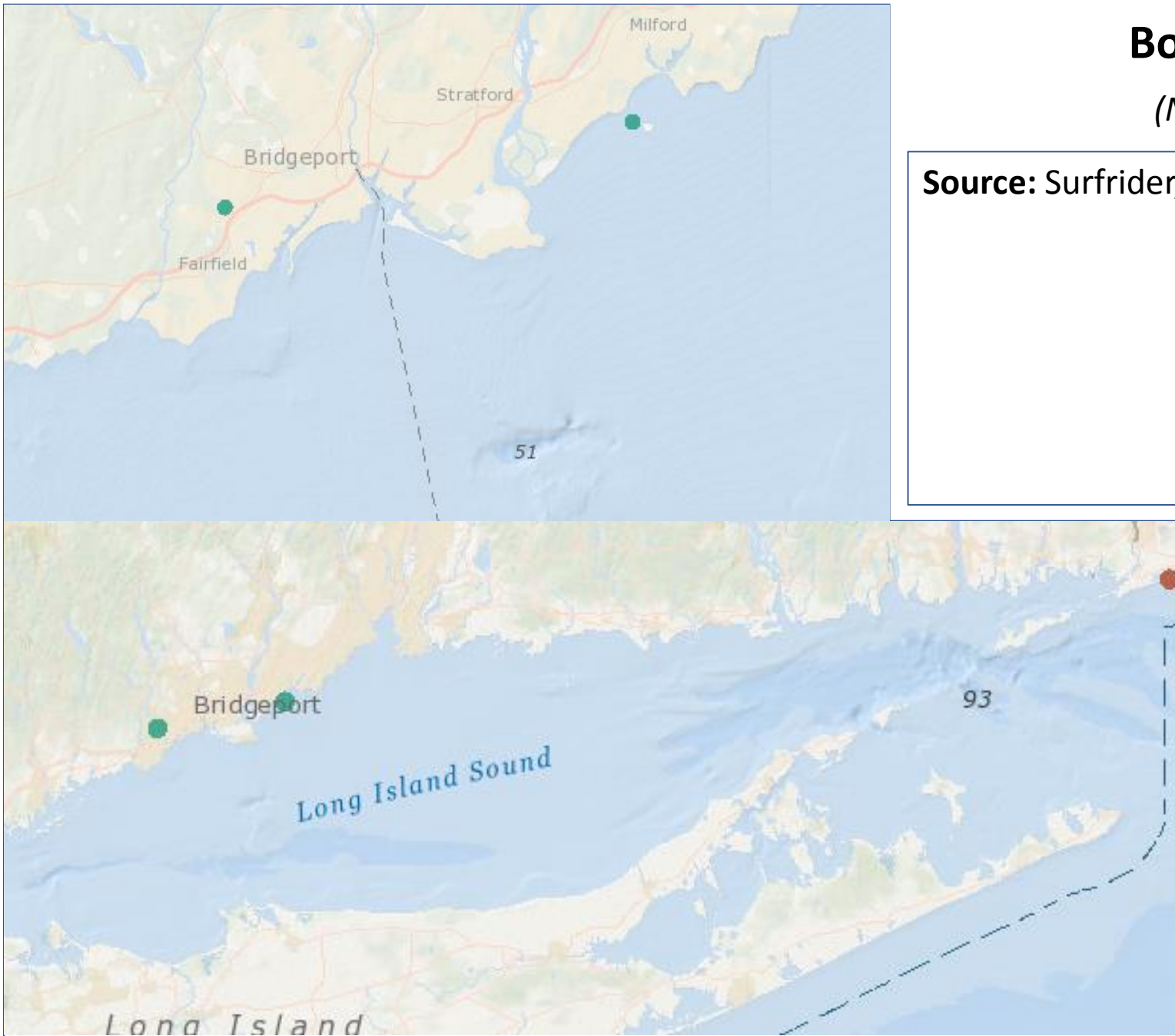
### Maritime Activities (Transportation, Recreation, Shellfish)

- Human Use Synthesis; Maritime Data
- Human Use Synthesis; Intensity
- Human Use Synthesis; Activity





# Board and Paddle Events

*(Northeast Ocean Data Portal)*

**Source:** Surfrider, SeaPlan, and Point 97



## Board and Paddle Events

-  SUP Race
-  Triathlon
-  Surf Contest
-  Kayak, Canoe, or Row Boat

# Board and Paddle Events



**Blue Plan Sector(s):** Recreation & Tourism > Recreational Sailing/Boating/Kayaking

**Summary Description:** This layer depicts the point locations of competitive board and paddle events as mapped in the Northeast Coastal and Marine Recreational Use Characterization Study which was conducted by SeaPlan, the Surfrider Foundation, and Point 97 under the direction of the Northeast Regional Planning Body. This study mapped event locations through an online opt-in survey, which allowed participants to map the locations of stand up paddleboard (SUP) races, surf contests, triathlons, and kayak, canoe or row boat races. The survey was live from March 31<sup>st</sup> to May 25<sup>th</sup>, 2015 and utilized Google Maps and a nautical chart interface which allowed users to map a polygon depicting the spatial footprint of the event. Increasing in popularity with spiking trends in ocean recreation participation, these nearshore events are held year round and are primarily scheduled during warmer months.

**Full Description:**

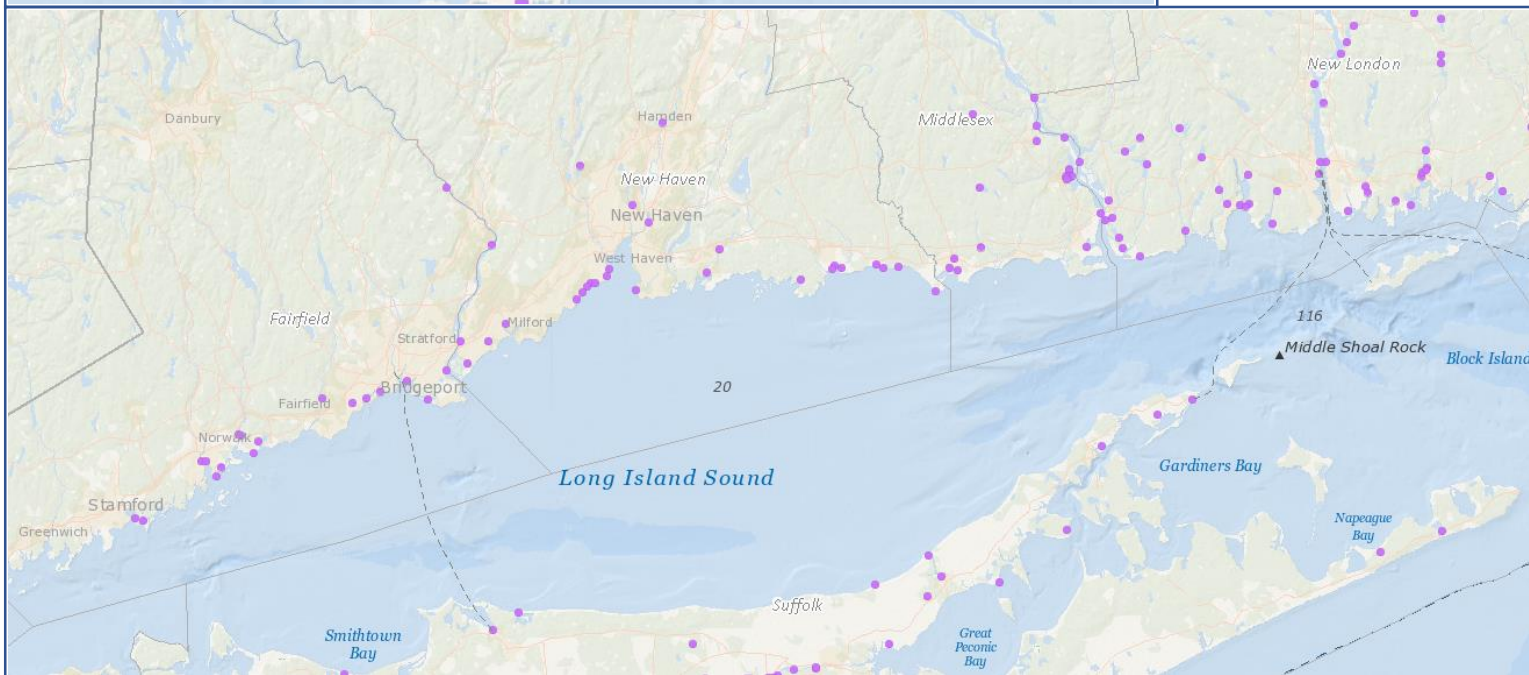
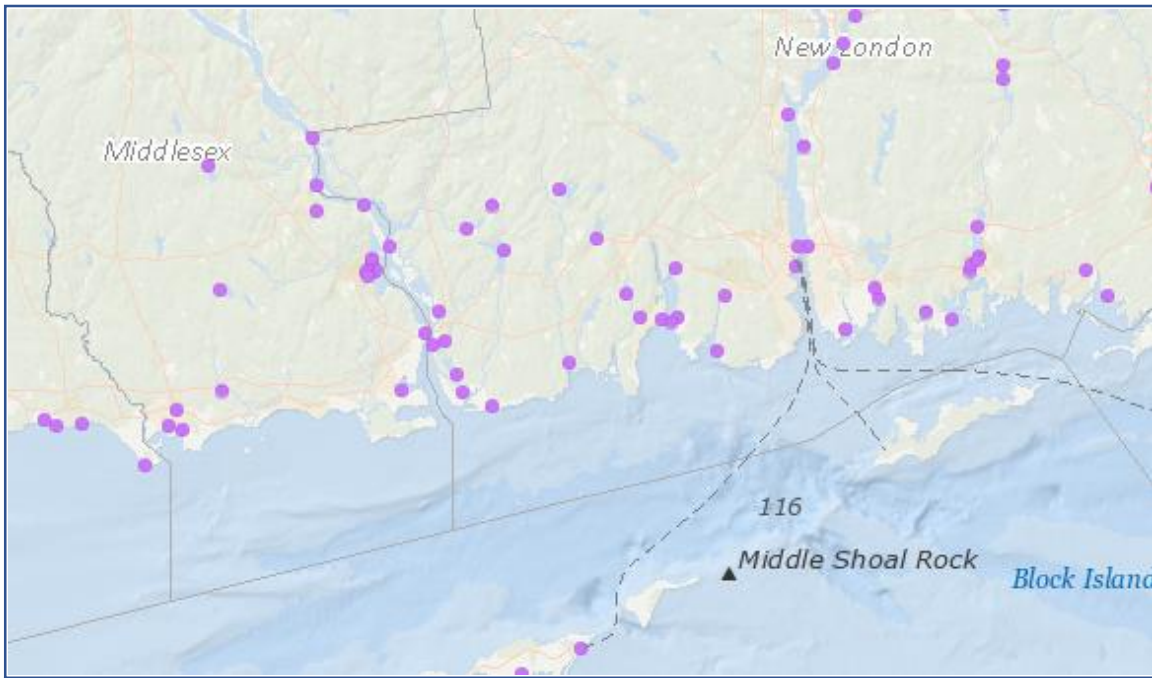
<http://www.northeastoceandata.org/files/metadata/Themes/Recreation/CompetitiveBoardAndPaddleEvents.pdf>

**Access Instructions:** Go to <http://www.northeastoceandata.org/data-explorer/>. Go to Recreation > Board and Paddle Events

# Boat Launches

(Northeast Ocean Data Portal)

**Source:** Connecticut Department of Energy and Environmental Protection, Maine Department of Agriculture, Conservation, and Forestry, Massachusetts Office of Fishing and Boating, New Hampshire Office of Energy and Planning, New York State Office of Parks Recreation and Historic Preservation, Rhode Island Sea Grant Program, Rhode Island Department of Environmental Management, Rhode Island Geographic Information System



## Boat Launches





# Boat Launches

**Blue Plan Sector(s)**: Recreation & Tourism > Sailing/Boating/Kayaking

**Summary Description**: This layer depicts state, municipal, and privately owned boat launches and marinas within 10 kilometers of the coast. Sites may be ramps suitable for trailered or carried-in boats, or landing facilities. Locations only suitable for shoreline fishing access and not boat put-in were not included in this data set. Data were aggregated from numerous authoritative state sources for coastal waters, lakes, ponds, and rivers. Based on source data, this product may not indicate private or public access for a given launch site and users are advised to determine accessibility prior to using a site. Data sources range from 2008 to 2014.

**Full Description**:

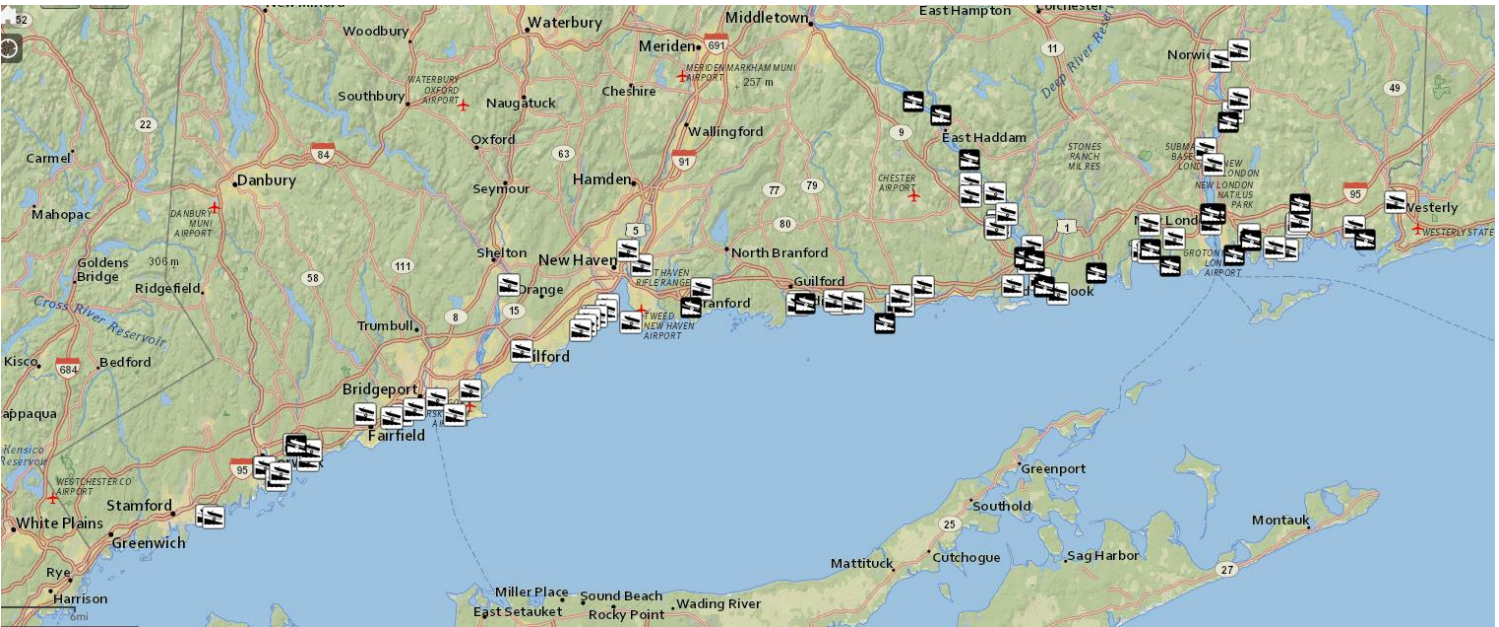
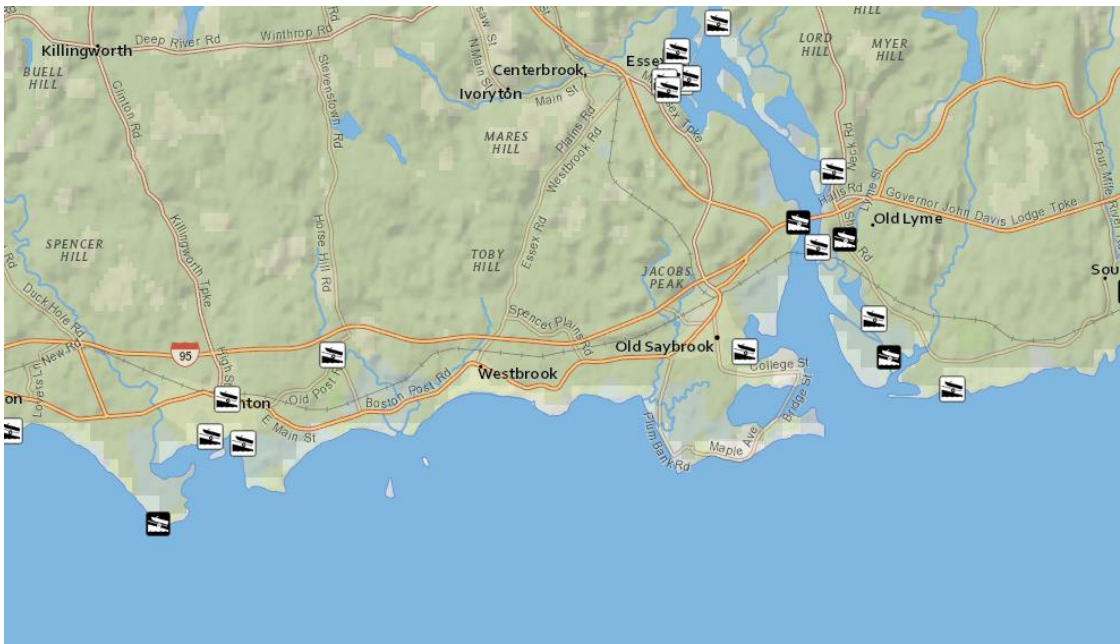
<http://www.northeastoceandata.org/files/metadata/Themes/Recreation/BoatLaunches.pdf>

**Access Instructions**: Go to <http://www.northeastoceandata.org/data-explorer/>. Go to Recreation > Boat Launches

# Boat Launches

## CTDEEP Saltwater Fishing Resource Map

Source: CTDEEP



State Boat Launches



Town Owned and Privately Owned Boat Launches



# Boat Launches

**Blue Plan Sector(s)**: Recreation & Tourism/Recreational Sailing/Boating/Kayaking

**Summary Description**: Make sure that you are familiar with current sport fishing regulations (open seasons, size requirements, catch limits). Check the Angler's Guide for summaries of rules and regulations governing sport fishing in Connecticut. You can also view a separate summary of marine sport fishing regulations. For legal purposes, the Regulations of Connecticut State Agencies and the General Statutes of Connecticut should be consulted.

More information about Trailered and Car Top/ Carry-In Boat Launches owned and/ or operated by the CT DEEP is available in the Connecticut Boaters Guide and on the CT-DEEP website. Boat launches shown in this map provide access to Long Island Sound.

Town-owned and privately owned boat launches are also included in this map. These listings come from the CT Coastal Access Guide.

**Full Description**: n/a

**Access Instructions**:

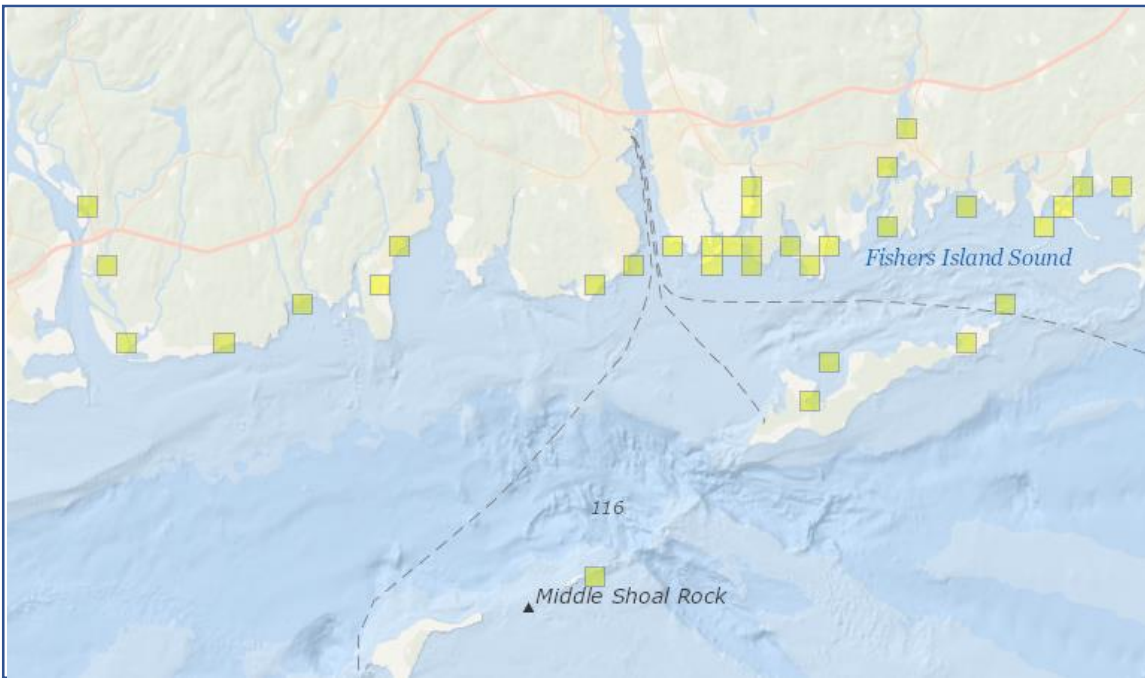
<https://ctdeep.maps.arcgis.com/apps/MapSeries/index.html?appid=719fe5662ac145f3b89fe8daf6b86042>



# Surface Water Activities

(Mid-Atlantic Ocean Data Portal)

**Source:** Point 97, Surfrider Foundation, Urban Coast Institute at Monmouth University, and The Nature Conservancy



Intensity of Use





# Surface Water Activities

**Blue Plan Sector(s)**: Recreation & Tourism > Recreational Boating/Sailing/Kayaking

**Summary Description**: *Abstract*: The data is displayed using a 1 kilometer by 1 kilometer grid for the U.S. Mid Atlantic coastline and offshore areas. The grid was created in ArcGIS 10.1 using the "Create Fishnet" tool. A polygon shapefile was created covering the extent of the Mid Atlantic region and was used as the feature class the grid was created from. After the grid was created, a union was run to remove the grid cells that fell inland of the medium-resolution NOAA coastline. The final result was the 1 kilometer by 1 kilometer planning unit grid extending from New York down to Virginia, following the coastline, and extending offshore far enough to intersect all activity points. The grouped activity points were merged together and summarized to the planning unit grid, leaving each cell with a value equal to the number of points that fell within that cell. In the attribute table, the number of each individual activity that make up the activity group is available to see what activities took place within that particular cell. *Purpose*: The goal of this study was to gather data on coastal and ocean recreation spatial use patterns to inform marine planning efforts in the U.S. Mid Atlantic region. The following is a description of the methods used to create the data for the Mid Atlantic Coastal and Ocean Recreation Study. The data were collected through an online survey deployed from July 1, 2013 to December 31, 2013. The survey respondents provided spatial information by placing a marker to indicate where they recreated on the coast in the last 12 months. The activity points used for this surface water grouping were kayaking/paddling, swimming, windsurfing, kiteboarding, skimboarding, and surfing. This dataset shows a 1 kilometer by 1 kilometer planning unit grid that the surface water-based activity points were summarized to.

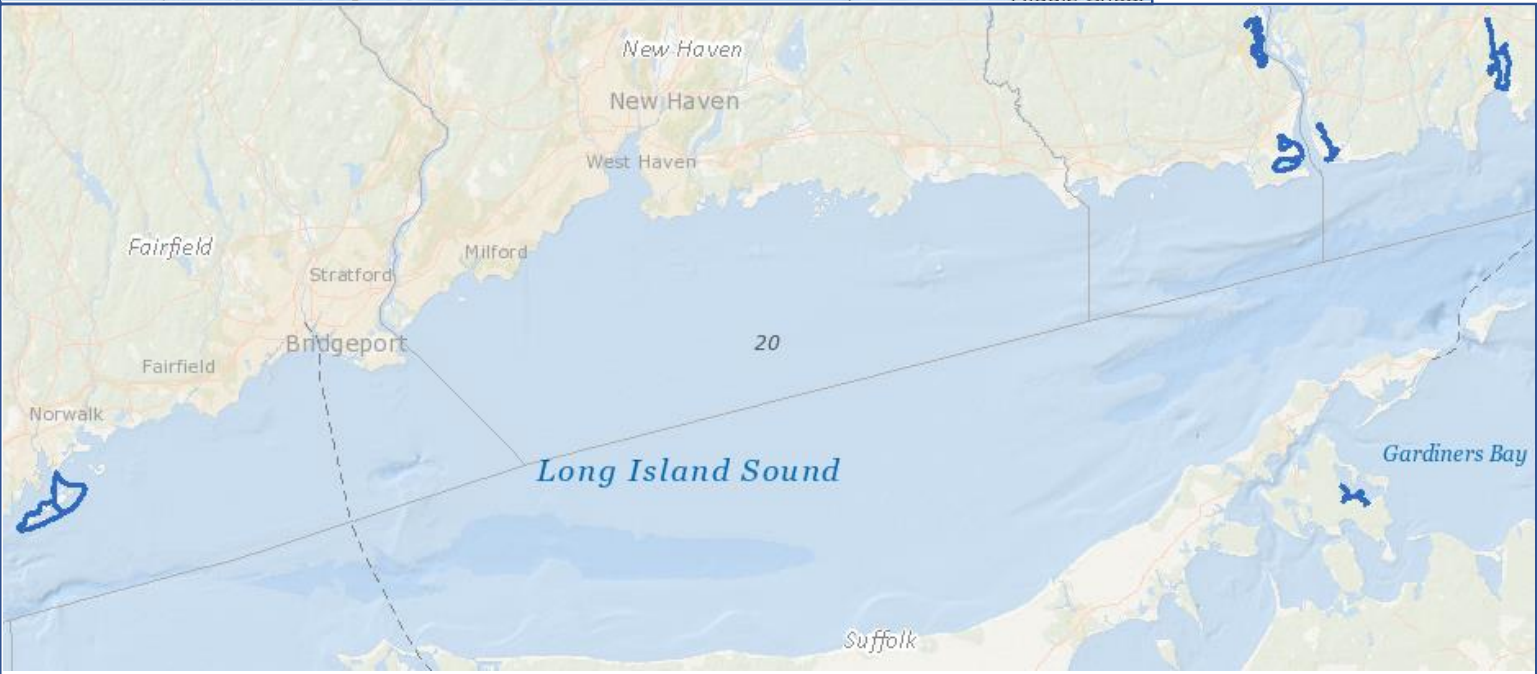
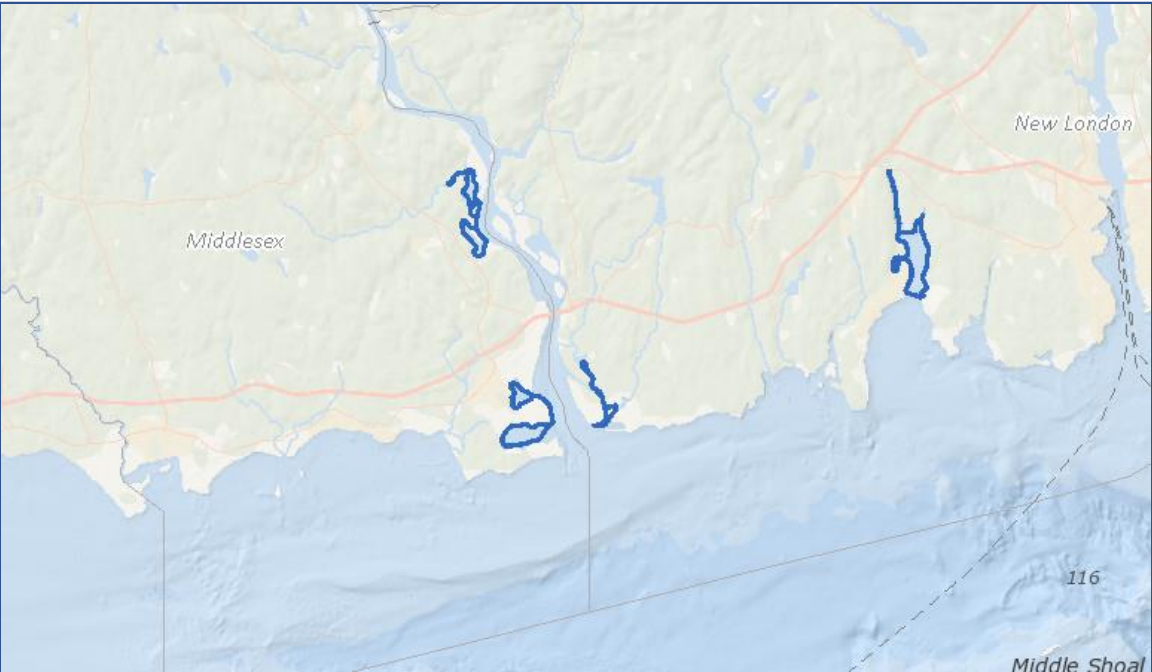
**Full Description**: [http://portal.midatlanticocean.org/static/data\\_manager/metadata/html/CoastalRec\\_overview.html](http://portal.midatlanticocean.org/static/data_manager/metadata/html/CoastalRec_overview.html)

**Access Instructions**: Go to <http://portal.midatlanticocean.org/>. Go to Recreation > Coastal Recreation Survey > Surface Water Activities

# Water Trails

(Northeast Ocean Data Portal)

**Source:** Bronx River Alliance of Connecticut, Rhode Island Blueways, The Nature Conservancy, Maine Island Trail Association



## Water Trails



# Water Trails

**Blue Plan Sector(s)**: Recreation & Tourism > Recreational Sailing/Boating/Kayaking

**Summary Description**: This data set shows the coastal water trails for the states of Connecticut, Maine, New York, and Rhode Island. (Here displayed primarily for the Long Island Sound). A water trail is an officially designated water route, or blueway, that is maintained by an agency or association that manages the trail location and any pertinent information. Water trails are coastal if they are located within or have an endpoint in a saline water body. Information on water trails was obtained from a number of different sources which manage individual trails or which aggregate information about multiple trails in one virtual location. Source data included online web maps, static maps in pdf form, textual descriptions, and direct conversations with partnering agencies.

## **Full Description**:

<http://www.northeastoceandata.org/files/metadata/Themes/Recreation/WaterTrails.pdf>

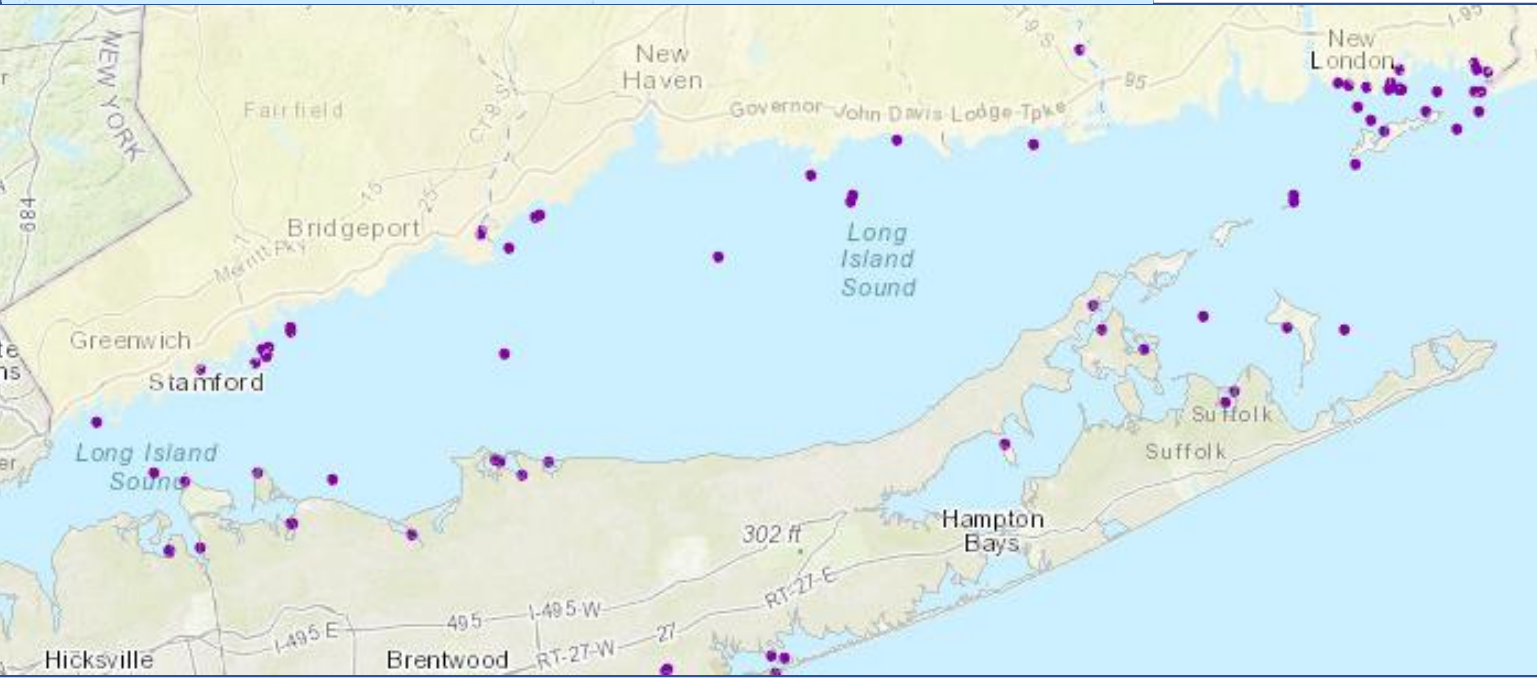
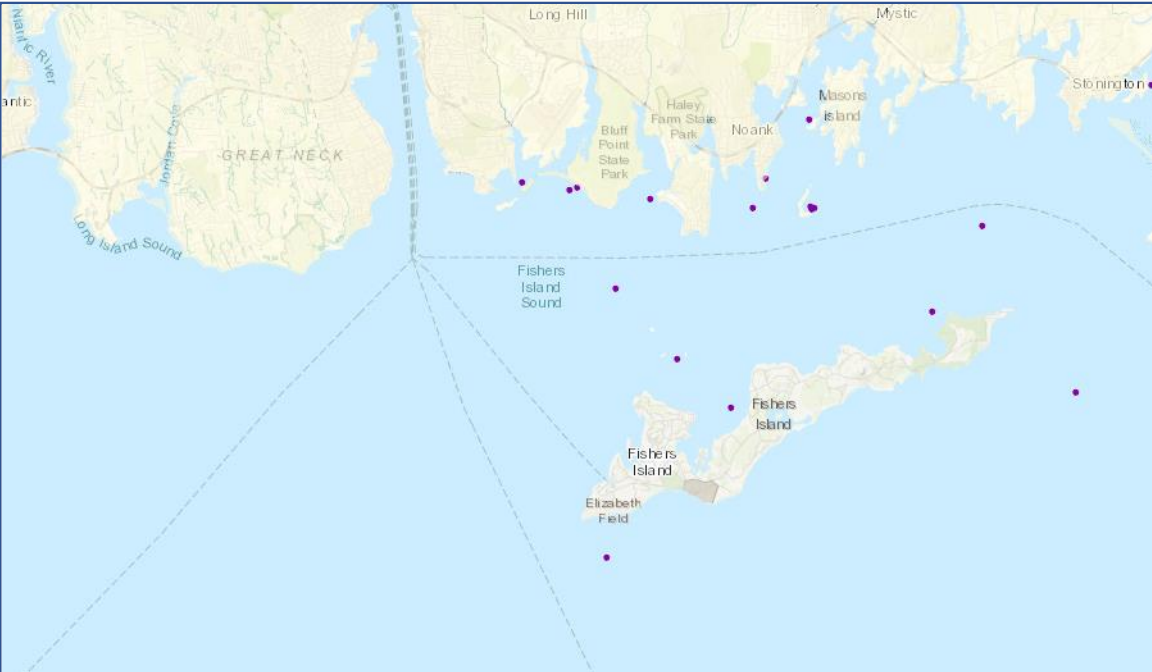
**Access Instructions**: Go to <http://www.northeastoceandata.org/data-explorer/>. Go to Recreation > Water Trails



# Wildlife Viewing – Northeast Region, 2012

(New York Geographic Information Gateway)

Source: Kate Longley, SeaPlan



## Legend:



# Wildlife Viewing – Northeast Region, 2012



**Blue Plan Sector(s):** Recreation & Tourism > Wildlife Watching/Tours/Viewing

**Summary Description:** *Abstract:* This layer shows locations where participants in the 2012 Northeast Recreational Boater Survey, conducted by SeaPlan and the Northeast Regional Ocean Council (NROC), participated in wildlife viewing activities. Survey participants plotted activity points using an interactive mapping tool. The 2012 Northeast Recreational Boater Survey was conducted by SeaPlan, the Northeast Regional Ocean Council (NROC), states' coastal agencies, marine trade associations composed of many private industry representatives, and the First Coast Guard District. The methodology for the 2012 Northeast Recreational Boater Survey follows a protocol similar to the 2010 Massachusetts Survey with modifications based on the lessons learned and recommendations suggested in the Massachusetts Survey Final Report. The methodology consists of surveying a random sample of selected boat owners throughout the Northeast through a series of monthly online surveys. The surveying period lasted throughout the 2012 boating season (May 1 through October 31, 2012), which was identified by the advisory committee (consisting of NROC and representatives from the recreational boating industry). The project team decided to use a random sample survey approach because it successfully gathered statistically robust economic and spatial data on recreational boating activity by Massachusetts registered boaters during the 2010 boating season. This was also the only approach that would allow for the calculation of statistically robust economic impact estimates for both the states and the region, which was identified as a priority (along with spatial data) by both NROC and the boating industry.

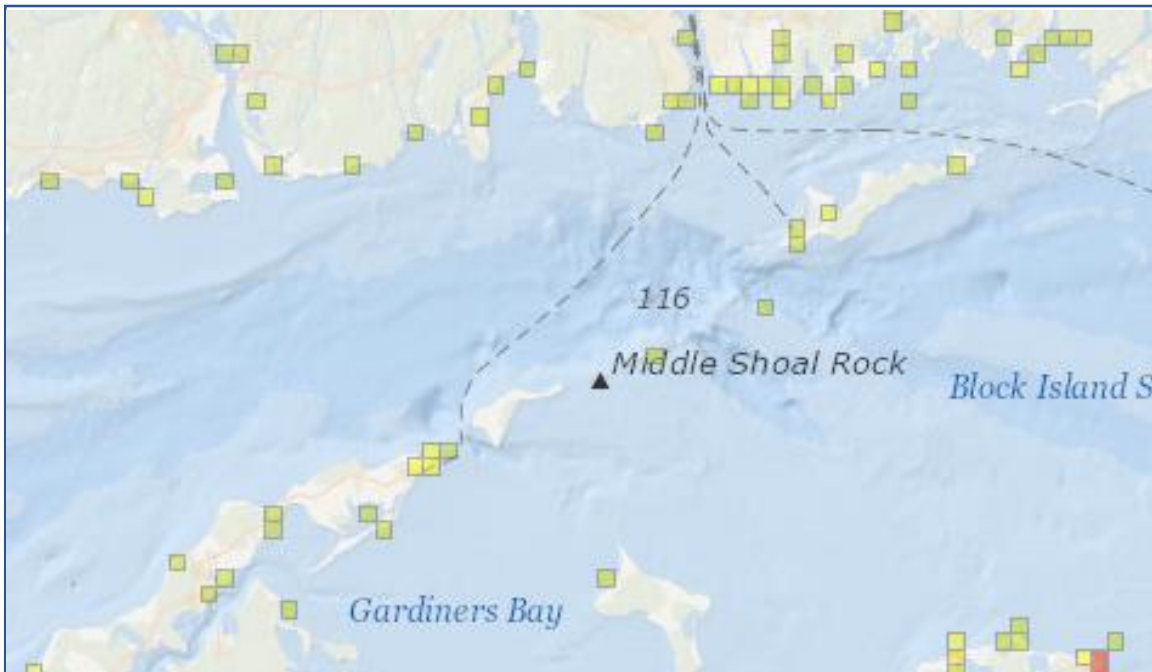
**Full Description:** <http://opdgig.dos.ny.gov/geoportal/catalog/search/resource/detailsnoheader.page?uuid={E063BF09-A615-401E-BEF3-0B63CDE19A02}>

**Access Instructions:** Go to <http://opdgig.dos.ny.gov/#/map>. Go to Recreation > Water Based > Wildlife Viewing – Northeast Region, 2012

# Wildlife and Sightseeing Activities

(Mid-Atlantic Ocean Data Portal)

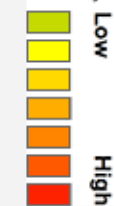
**Source:** Point 97, Surfrider Foundation, Urban Coast Institute at Monmouth University, and The Nature Conservancy



## Coastal Recreation Survey: Wildlife and Sightseeing Activities

(sitting in the car watching the scene, scenic enjoyment, photography, wildlife viewing)

Intensity of Use





# Wildlife and Sightseeing Activities

**Blue Plan Sector(s):** Recreation & Tourism > WildlifeWatching/Tours/Viewing

**Summary Description:** *Abstract:* The data is displayed using a 1 kilometer by 1 kilometer grid for the U.S. Mid Atlantic coastline and offshore areas. The grid was created in ArcGIS 10.1 using the "Create Fishnet" tool. A polygon shapefile was created covering the extent of the Mid Atlantic region and was used as the feature class the grid was created from. After the grid was created, a union was run to remove the grid cells that fell inland of the medium-resolution NOAA coastline. The final result was the 1 kilometer by 1 kilometer planning unit grid extending from New York down to Virginia, following the coastline, and extending offshore far enough to intersect all activity points. The grouped activity points were merged together and summarized to the planning unit grid, leaving each cell with a value equal to the number of points that fell within that cell. In the attribute table, the number of each individual activity that make up the activity group is available to see what activities took place within that particular cell. *Purpose:* The following is a description of the methods used to create the data for the Mid Atlantic Coastal and Ocean Recreation Study. The data were collected through an online survey deployed from July 1, 2013 to December 31, 2013. The survey respondents provided spatial information by placing a marker to indicate where they recreated on the coast in the last 12 months. The activity points used for this sightseeing activities group were sitting in your car watching the scene, scenic enjoyment, photography, and wildlife viewing. This dataset shows a 1 kilometer by 1 kilometer planning unit grid that the sightseeing activity points were summarized to.

**Full Description:**

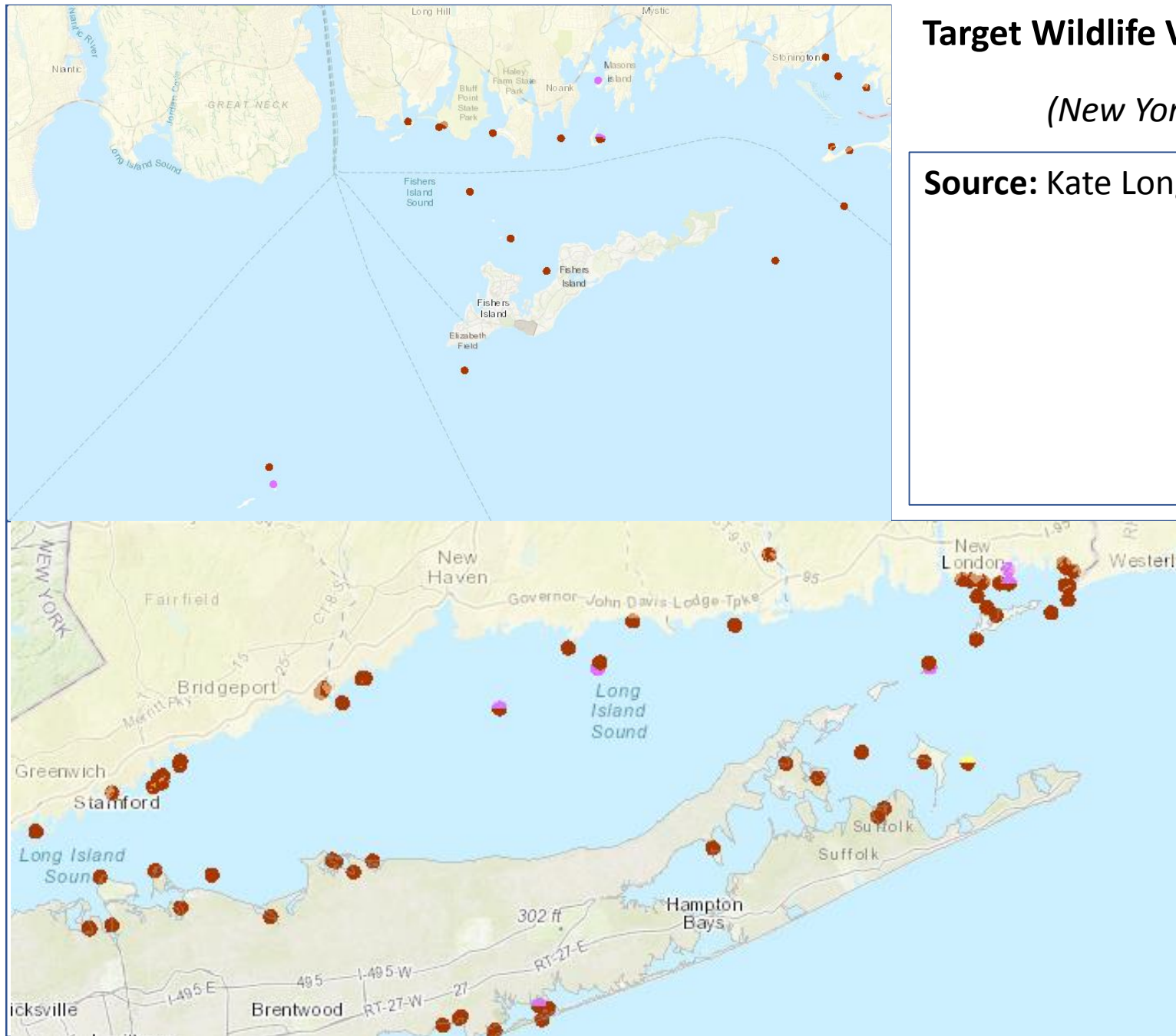
[http://portal.midatlanticocean.org/static/data\\_manager/metadata/html/CoastalRec\\_REG\\_Sightseeing\\_PUG\\_final.html](http://portal.midatlanticocean.org/static/data_manager/metadata/html/CoastalRec_REG_Sightseeing_PUG_final.html)

**Access Instructions:** Go to <http://portal.midatlanticocean.org/visualize>. Go to Recreation > Coastal Recreation Survey > Wildlife and Sightseeing Activities






# Target Wildlife Viewing Species – Northeast Region, 2012

*(New York Geographic Information Gateway)*

Source: Kate Longley, SeaPlan



## Legend:

-  Wildlife Viewing: Whales
-  Wildlife Viewing: Dolphins and Porpoise
-  Wildlife Viewing: Seals
-  Wildlife Viewing: Birds
-  Wildlife Viewing: Turtles

# Target Wildlife Watching Species – Northeast Region, 2012



**Blue Plan Sector(s)**: Recreation & Tourism > Wildlife Watching/Tours/Viewing

**Summary Description**: <copy descriptive summary text from portal or viewer>

**Full Description**:

<http://opdgig.dos.ny.gov/geoportal/catalog/search/resource/detailsnoheader.page?uuid={87B23E04-6F8E-4CA3-A61A-95F2961A58D7}>

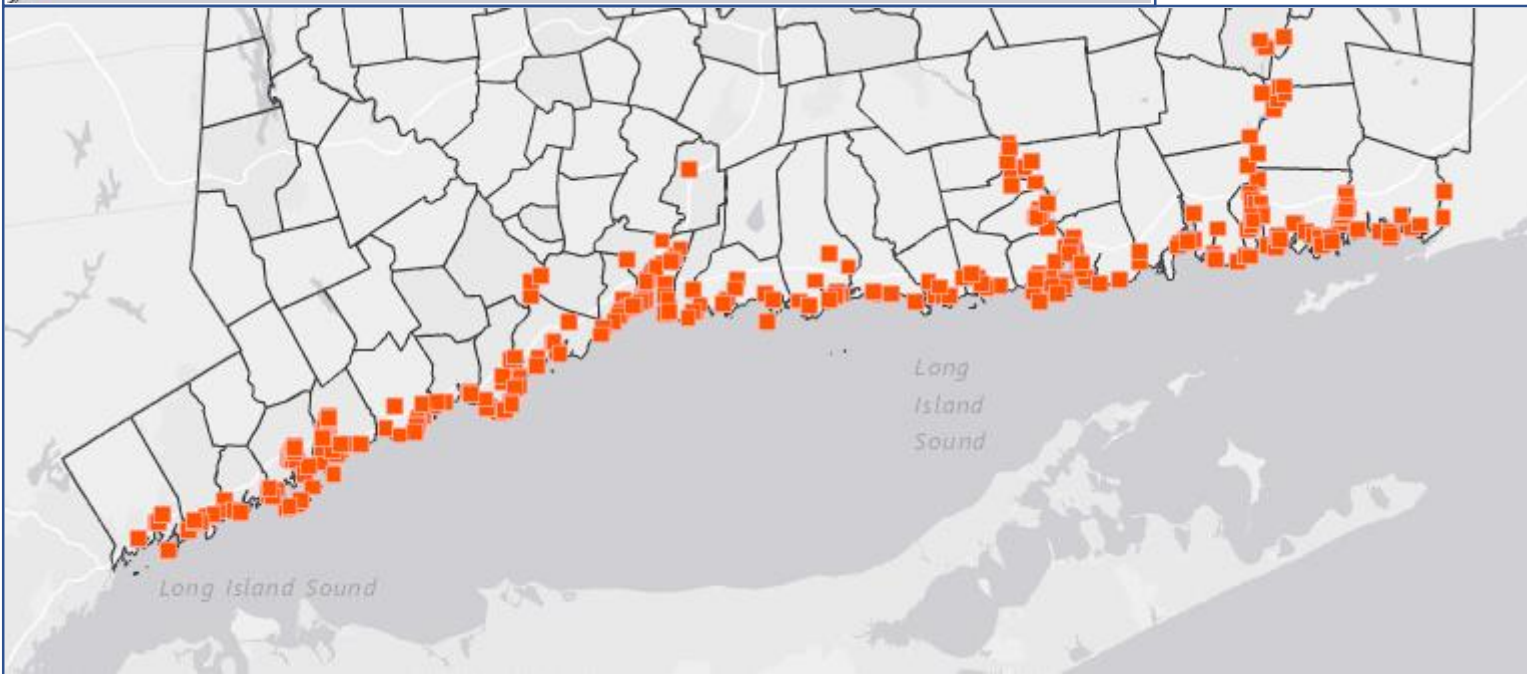
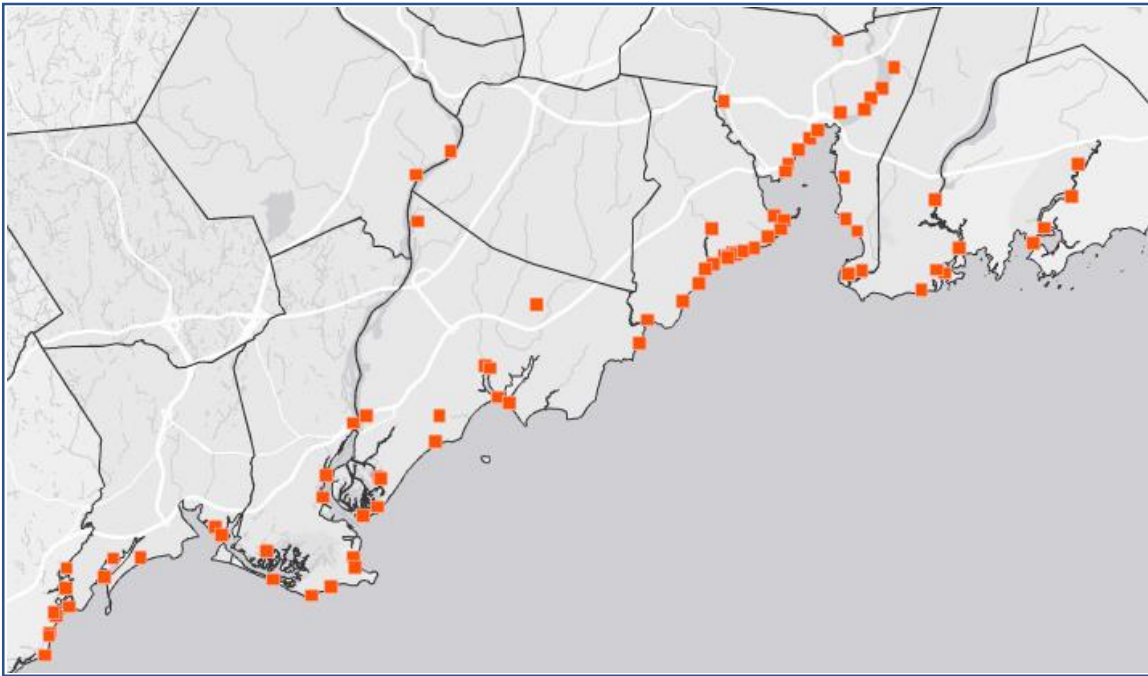
**Access Instructions**: Go to <http://opdgig.dos.ny.gov/#/map>. Go to Recreation > Water Based > Target Wildlife Watching Species – Northeast Region, 2012



# Coastal Access Sites

*(CT Aquaculture Mapping Atlas)*

Source: CT DEEP



Coastal Access Sites

A legend box with a dark blue background. It contains the text "Coastal Access Sites" in white, followed by a small orange square icon.

# Coastal Access Sites



**Blue Plan Sector(s):** Recreation & Tourism > General

**Summary Description:** This layer displays public coastal access sites along the Connecticut shore. The general public may freely use these lands and waters, whether they are beach, rocky shore, or open water, for traditional public trust uses such as fishing, shellfishing, boating, sunbathing, or simply walking along the beach. In Connecticut, a line of state Supreme Court cases dating back to the earliest days of the republic confirm that private ownership ends at mean high water line, and that the state holds title to the lands waterward of mean high water, subject to the private rights of littoral or riparian access.

**Full Description:**

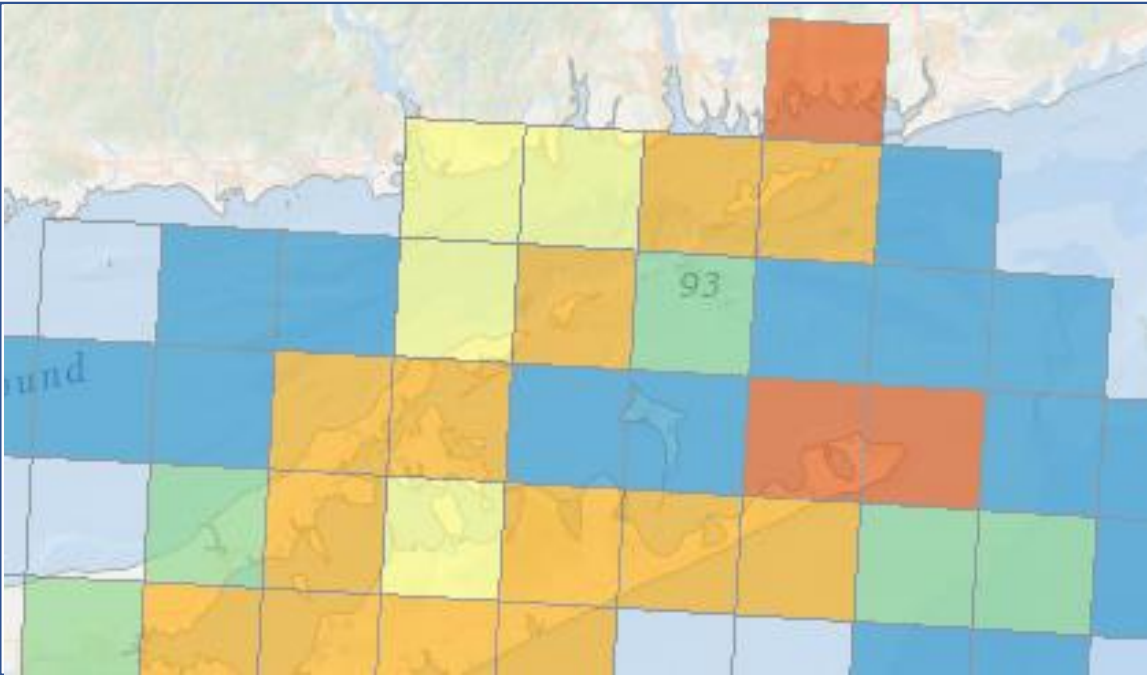
<https://clear3.uconn.edu/arcgis/rest/services/Maps/ShellfishWebApp2013/MapServer/5;>  
[http://www.ct.gov/deep/cwp/view.asp?a=2705&q=323788&deepNav\\_GID=1635](http://www.ct.gov/deep/cwp/view.asp?a=2705&q=323788&deepNav_GID=1635)

**Access Instructions:** Go to <https://clear3.uconn.edu/viewers/shellfish/>. Go to Coastal Access Sites

# Theme - Recreation

(Mid-Atlantic Ocean Data Portal)

**Source:** Mid-Atlantic Ocean Data Portal project team organization and partners



HUDS Theme - Recreation Data

Total

- 0
- 1
- 2
- 3
- 4 - 5
- 6 - 8

# Theme - Recreation



**Blue Plan Sector(s)**: Recreation & Tourism > General

**Summary Description:** *Abstract:* The Mid-Atlantic Regional Council on the Ocean (MARCO) contracted with RPS The Mid-Atlantic Regional Council on the Ocean (MARCO) contracted with RPS Applied Science Associates (dba RPS ASA) in partnership with SeaPlan to develop synthesized spatial products characterizing human use in the Mid-Atlantic (Mid-A) region using existing data products. This project was referred to as the Human Use Data Synthesis (HUDS) in order to promote ocean planning priorities and goals as laid out in the draft Regional Ocean Action Plan (ROAP) Framework for the Mid-A region, defined as New York to Virginia from the coast out to the Exclusive Economic Zone. RPS ASA and SeaPlan developed a human use mapping approach that borrows from existing efforts while honoring the goals of MARCO and constraints inherent to the available data. The MARCO web portal was the primary source of data throughout the project, however additional data was incorporated from other sources such as the Marine Cadastre, the U.S. Navy, and from the Northeast Regional Ocean Council's (NROC) parallel ocean planning efforts. All available data were mapped to a 10 km grid within the region.

This product is a companion dataset to the master 'HUDS All Data Synthesis' product and summarizes information specific to data presence. This dataset contains a list of attributes which denote data presence for the 64 source datasets included in the analysis. Each field identifies whether a given data layer occurred within a grid cell; cells with data were assigned 1 while cells without data were assigned 0. An additional set of fields tallies the total number of layers per cell and the total number of layers for various themes to better identify regional human use trends. There were five main themes: maritime, fishing, recreation, energy, and security. Each source layer is included in only one of these themes. Four additional themes break out the data by all activities, all infrastructure, physical infrastructure only, and regulatory infrastructure only. The sum of the physical-infrastructure and regulatory-infrastructure fields should equal the number for all-infrastructure.

The companion product 'HUDS All Data Synthesis' contains more detailed information beyond a simple count of uses, such as descriptive information and spatial statistics for the areal, linear, or point coverage for every layer within each cell. The companion product also includes a "use intensity" metric that accounts for variation in the distribution of data across cells, which retains more of the signal in the original datasets without reducing it to 0 (absence) or 1 (presence) by instead scaling data presence from 0 to 1. This metric is based on selecting a pertinent attribute from each individual layer (e.g. count of infrastructure points, length of lines), summing this attribute within each grid cell, and scaling these summed values from 0-1 to allow for direct comparisons across layers. The result is a more nuanced view of data presence.

**Full Description:** [http://portal.midatlanticocean.org/static/data\\_manager/metadata/html/HUDS\\_Summary\\_Data\\_Presence.html](http://portal.midatlanticocean.org/static/data_manager/metadata/html/HUDS_Summary_Data_Presence.html)

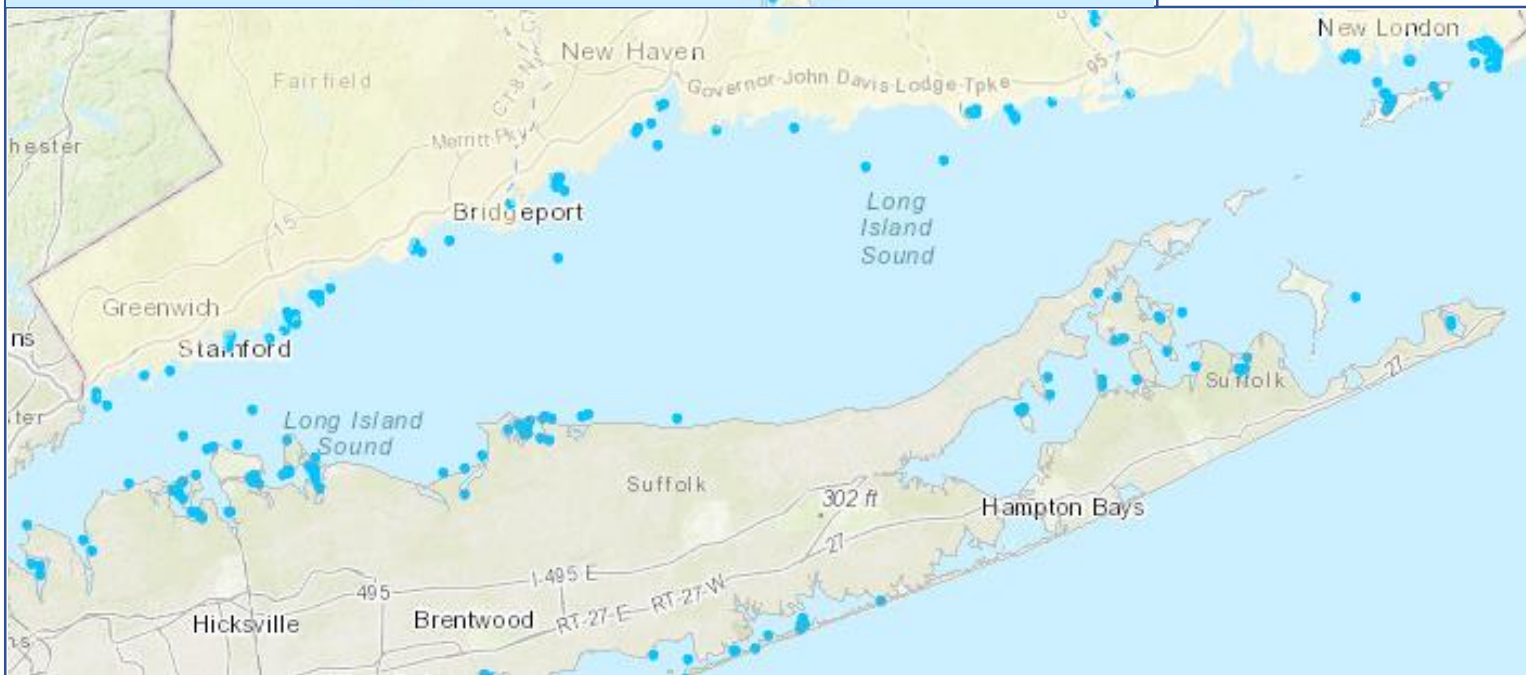
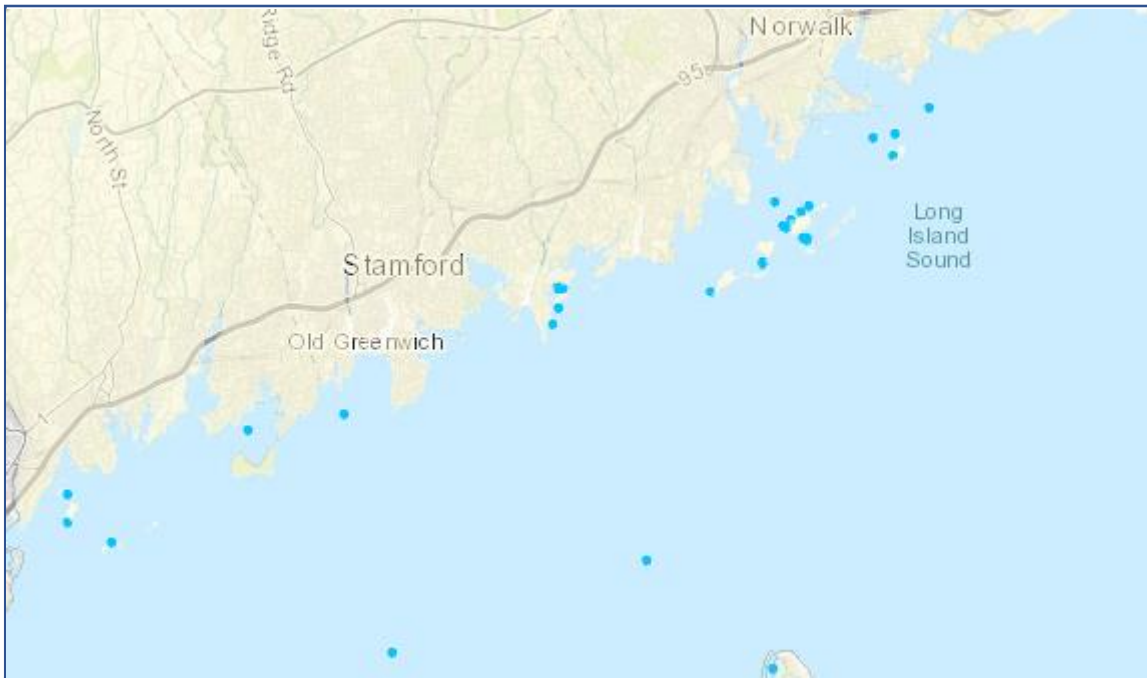
**Access Instructions:** Go to <http://portal.midatlanticocean.org/visualize>. Go to Human Use Data Synthesis > Theme - Recreation



# Swimming – Northeast Region, 2012

(New York Geographic Information Gateway)

Source: Kate Longley, SeaPlan



Legend:



# Swimming – Northeast Region, 2012



**Blue Plan Sector(s):** Recreation & Tourism > Beachgoing & Other Non-Consumptive Activities

**Summary Description:** *Abstract:* This layer shows locations where participants in the 2012 Northeast Recreational Boater Survey, conducted by SeaPlan and the Northeast Regional Ocean Council (NROC), participated in swimming activities. Survey participants plotted activity points using an interactive mapping tool. The 2012 Northeast Recreational Boater Survey was conducted by SeaPlan, the Northeast Regional Ocean Council (NROC), states' coastal agencies, marine trade associations composed of many private industry representatives, and the First Coast Guard District. The methodology for the 2012 Northeast Recreational Boater Survey follows a protocol similar to the 2010 Massachusetts Survey with modifications based on the lessons learned and recommendations suggested in the Massachusetts Survey Final Report. The methodology consists of surveying a random sample of selected boat owners throughout the Northeast through a series of monthly online surveys. The surveying period lasted throughout the 2012 boating season (May 1 through October 31, 2012), which was identified by the advisory committee (consisting of NROC and representatives from the recreational boating industry). The project team decided to use a random sample survey approach because it successfully gathered statistically robust economic and spatial data on recreational boating activity by Massachusetts registered boaters during the 2010 boating season. This was also the only approach that would allow for the calculation of statistically robust economic impact estimates for both the states and the region, which was identified as a priority (along with spatial data) by both NROC and the boating industry.

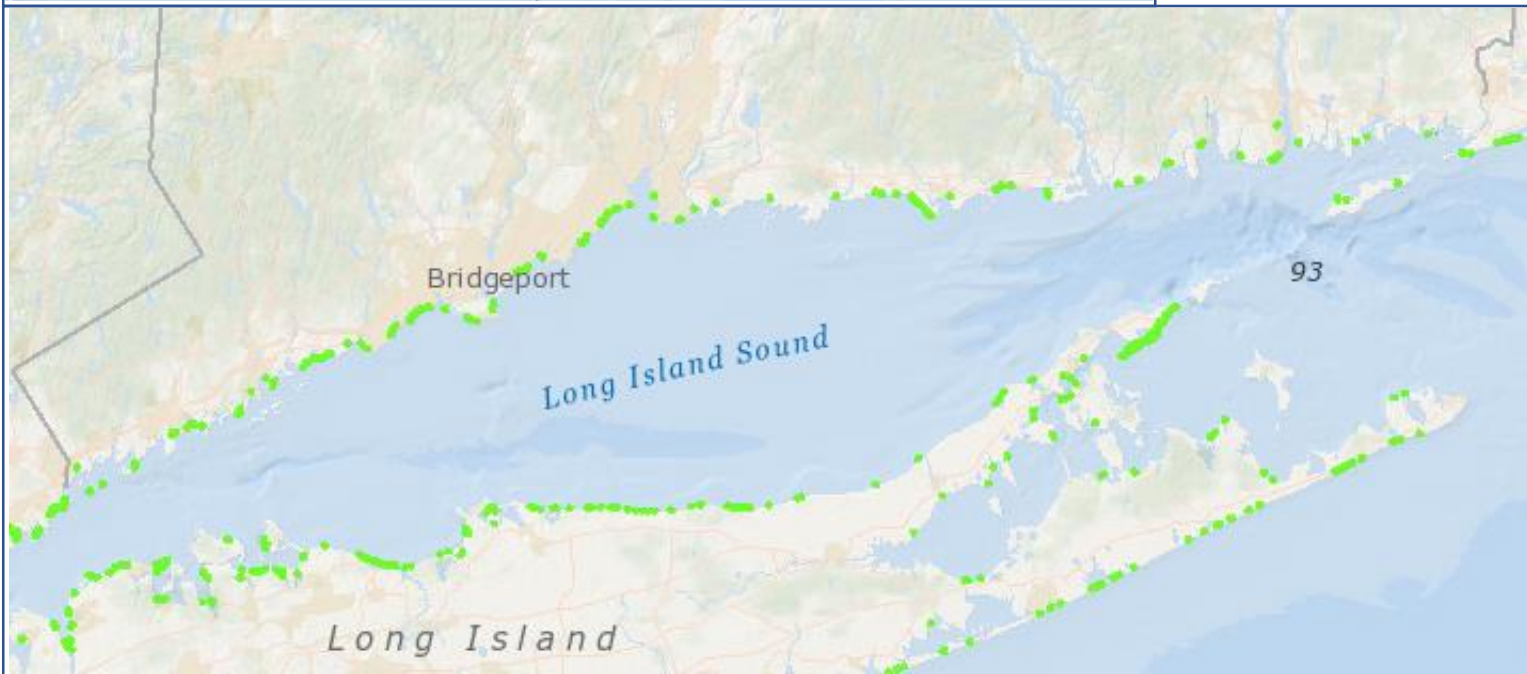
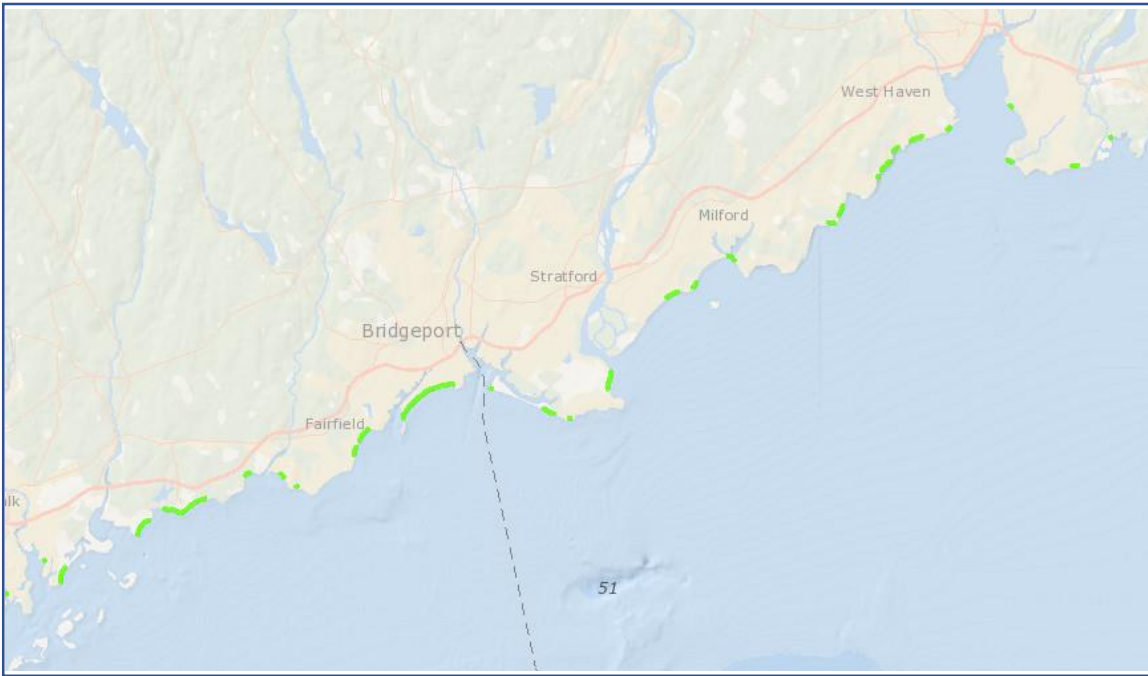
**Full Description:** <http://opdgig.dos.ny.gov/geoportal/catalog/search/resource/detailsnoheader.page?uuid={B63EB039-D1A9-44E7-8468-E60EB1D2EDE2}>

**Access Instructions:** Go to <http://opdgig.dos.ny.gov/#/map>. Go to Recreation > Water Based > Swimming – Northeast Region, 2012

# Beaches

(Northeast Ocean Data Portal)

Source: US Environmental Protection Agency, Office of Water



## Beaches

- Active
- Advisory
- Closure
- Not Reported On

# Beaches



**Blue Plan Sector(s):** Recreation & Tourism > Beachgoing & Other Non-Consumptive Activities

**Summary Description:** This layer represents beaches which are designated under the Environmental Protection Agency (EPA) Beach Advisory and Closing Online Notification system (BEACON). BEACON is a national database that contains beach monitoring and notification data reported by states, territories, and tribes. It provides advisory or closing information based on water quality or other environmental conditions. While this layer contains many beaches at municipal, state, and federal levels, some beaches may not be included since they are not a part of BEACON.

**Full Description:** [https://edg.epa.gov/metadata/rest/document?id={4A2F897E-E1E4-453E-9A29-674A520E4B92}&xsl=metadata\\_to\\_html\\_full](https://edg.epa.gov/metadata/rest/document?id={4A2F897E-E1E4-453E-9A29-674A520E4B92}&xsl=metadata_to_html_full)

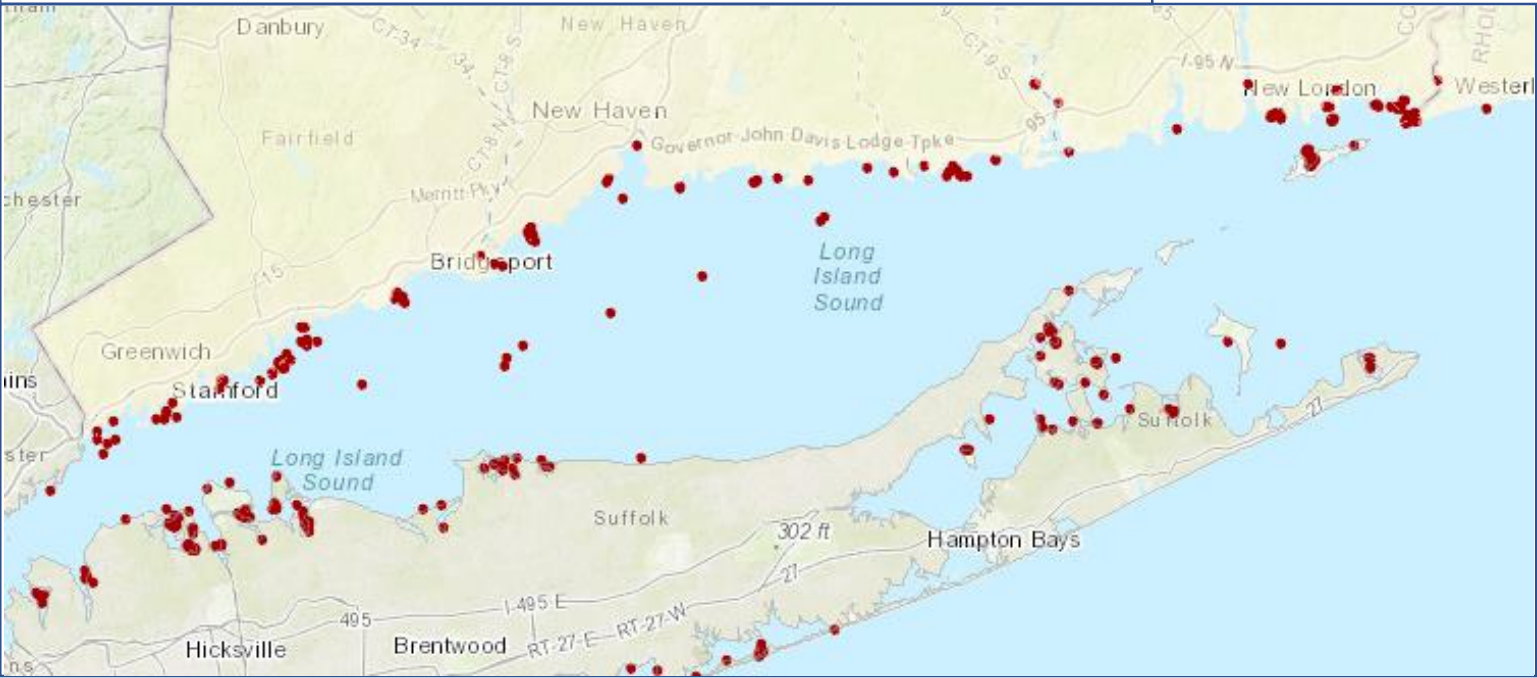
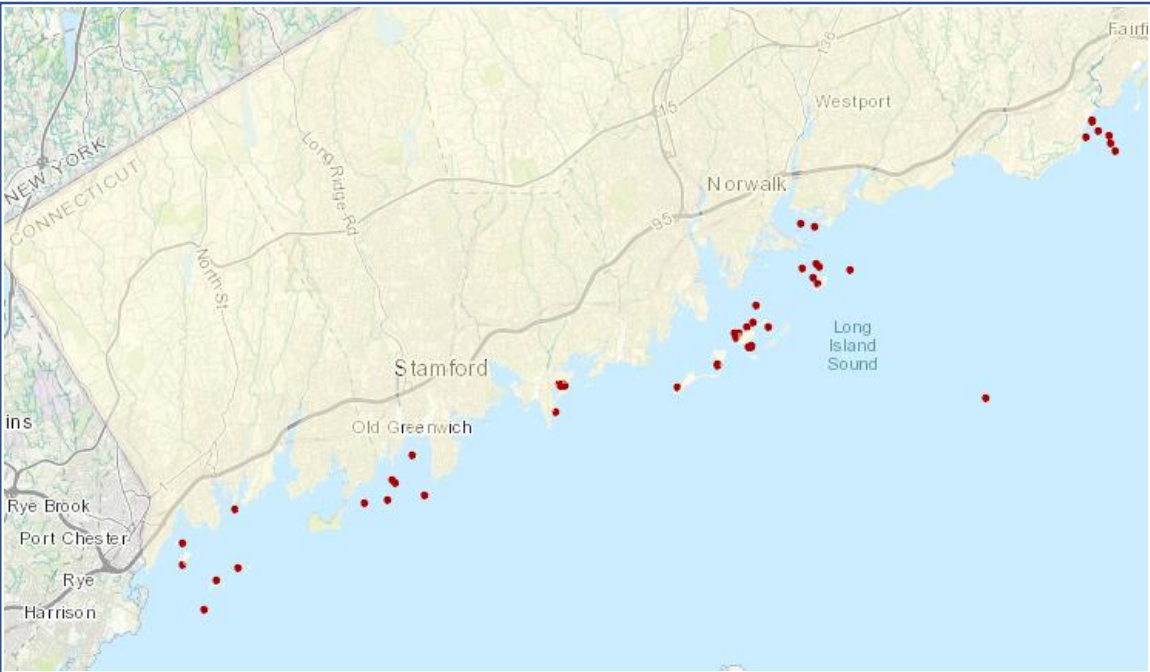
**Access Instructions:** Go to <http://www.northeastoceandata.org/data-explorer/>. Go to Recreation > Beaches



# Relaxing – Northeast Region, 2012

(New York Geographic Information Survey)

Source: Kate Longley, SeaPlan



Legend:



# Relaxing – Northeast Region, 2012



**Blue Plan Sector(s):** Recreation & Tourism > Beachgoing & Other Non-Consumptive Activities

**Summary Description:** This layer shows locations where participants in the 2012 Northeast Recreational Boater Survey, conducted by SeaPlan and the Northeast Regional Ocean Council (NROC), participated in relaxing activities. Survey participants plotted activity points using an interactive mapping tool. The 2012 Northeast Recreational Boater Survey was conducted by SeaPlan, the Northeast Regional Ocean Council (NROC), states' coastal agencies, marine trade associations composed of many private industry representatives, and the First Coast Guard District. The methodology for the 2012 Northeast Recreational Boater Survey follows a protocol similar to the 2010 Massachusetts Survey with modifications based on the lessons learned and recommendations suggested in the Massachusetts Survey Final Report. The methodology consists of surveying a random sample of selected boat owners throughout the Northeast through a series of monthly online surveys. The surveying period lasted throughout the 2012 boating season (May 1 through October 31, 2012), which was identified by the advisory committee (consisting of NROC and representatives from the recreational boating industry). The project team decided to use a random sample survey approach because it successfully gathered statistically robust economic and spatial data on recreational boating activity by Massachusetts registered boaters during the 2010 boating season. This was also the only approach that would allow for the calculation of statistically robust economic impact estimates for both the states and the region, which was identified as a priority (along with spatial data) by both NROC and the boating industry.

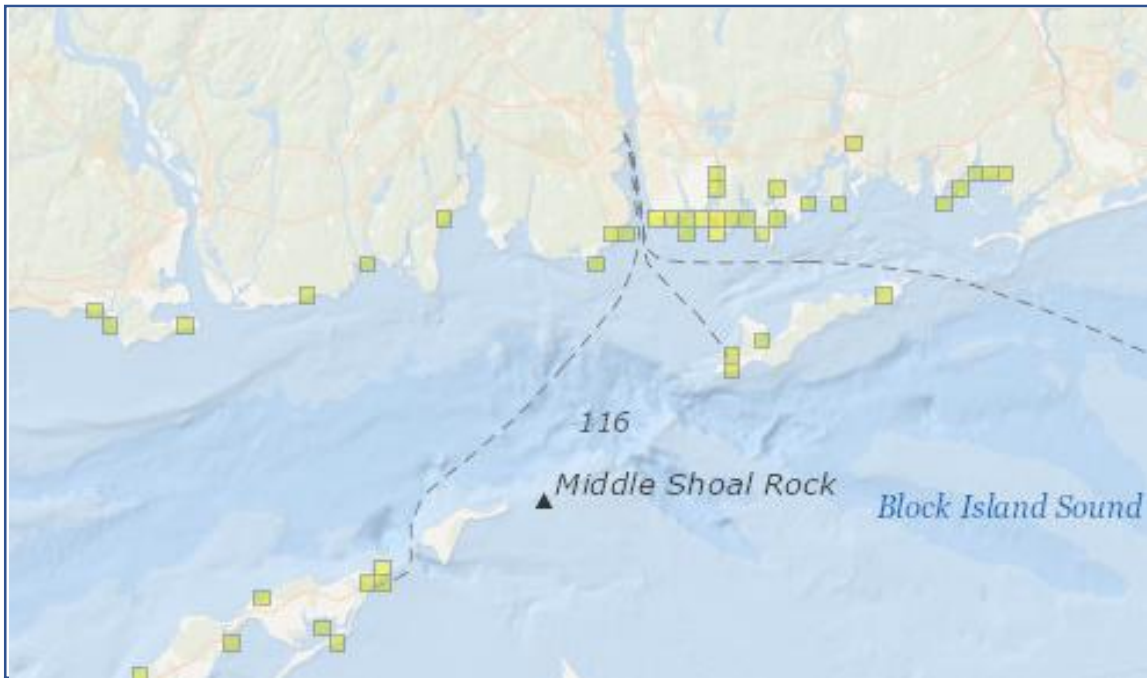
**Full Description:** <http://opdgig.dos.ny.gov/geoportal/catalog/search/resource/detailsnoheader.page?uuid={022F05E4-B174-45DE-9967-6EF4E0F1B0C9}>

**Access Instructions:** Go to <http://opdgig.dos.ny.gov/#/map>. Go to Recreation > Water Based > Relaxing – Northeast Region, 2012

# Shore-Based Activities

(Mid-Atlantic Ocean Data Portal)

**Source:** Point 97, Surfrider Foundation, Urban Coast Institute at Monmouth University, and The Nature Conservancy



Coastal Recreation Survey: Shore-based Activities  
(beach-going, biking and hiking, camping, collection of non-living resources)

Intensity of Use





# Shore-Based Activities

**Blue Plan Sector(s)**: Recreation & Tourism > Beachgoing & Other Non-Consumptive Uses

**Summary Description:** *Abstract:* The data is displayed using a 1 kilometer by 1 kilometer grid for the U.S. Mid Atlantic coastline and offshore areas. The grid was created in ArcGIS 10.1 using the "Create Fishnet" tool. A polygon shapefile was created covering the extent of the Mid Atlantic region and was used as the feature class the grid was created from. After the grid was created, a union was run to remove the grid cells that fell inland of the medium-resolution NOAA coastline. The final result was the 1 kilometer by 1 kilometer planning unit grid extending from New York down to Virginia, following the coastline, and extending offshore far enough to intersect all activity points. The grouped activity points were merged together and summarized to the planning unit grid, leaving each cell with a value equal to the number of points that fell within that cell. In the attribute table, the number of each individual activity that make up the activity group is available to see what activities took place within that particular cell. *Purpose:* The following is a description of the methods used to create the data for the Mid Atlantic Coastal and Ocean Recreation Study. The data were collected through an online survey deployed from July 1, 2013 to December 31, 2013. The survey respondents provided spatial information by placing a marker to indicate where they recreated on the coast in the last 12 months. The activity points used for this shore-based grouping were beach going, biking/hiking, camping, and collection of non-living resources/beachcombing.

**Full Description:**

[http://portal.midatlanticocean.org/static/data\\_manager/metadata/html/CoastalRec\\_REG\\_Shore\\_PUG\\_final.html](http://portal.midatlanticocean.org/static/data_manager/metadata/html/CoastalRec_REG_Shore_PUG_final.html)

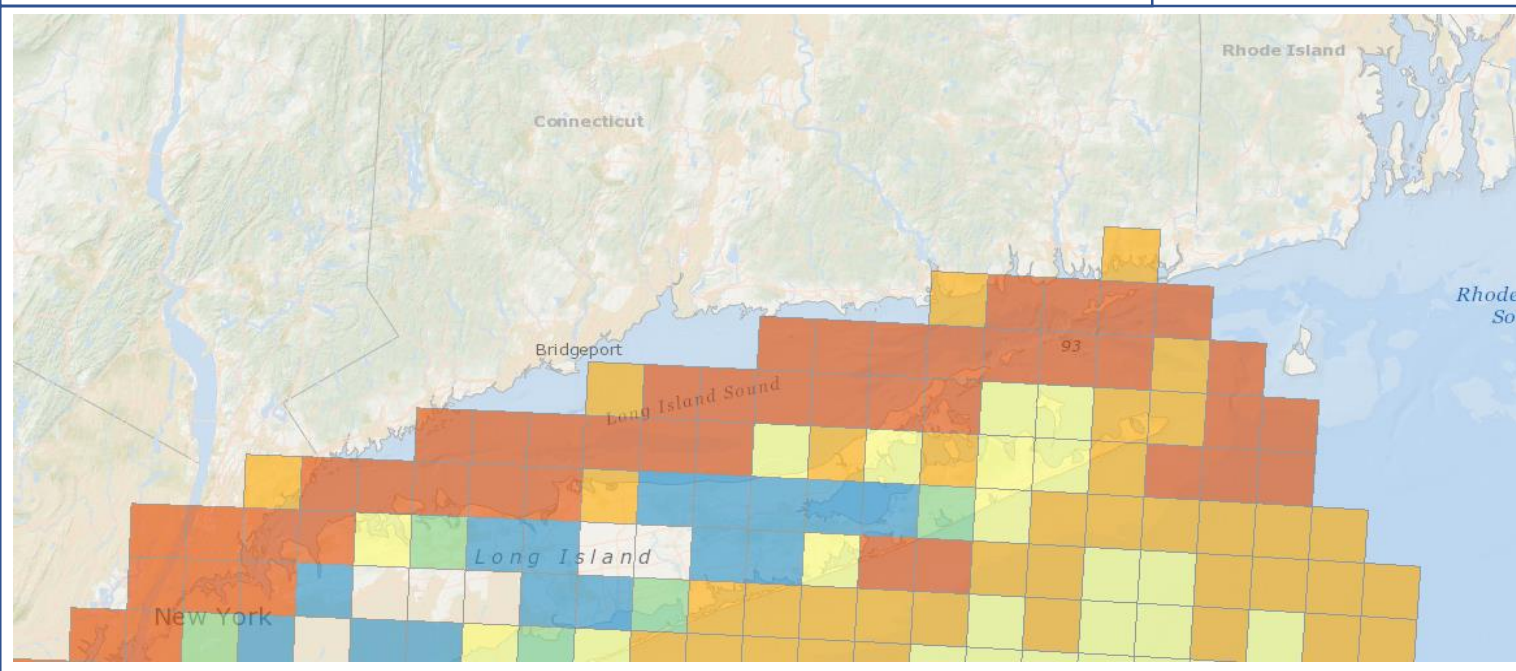
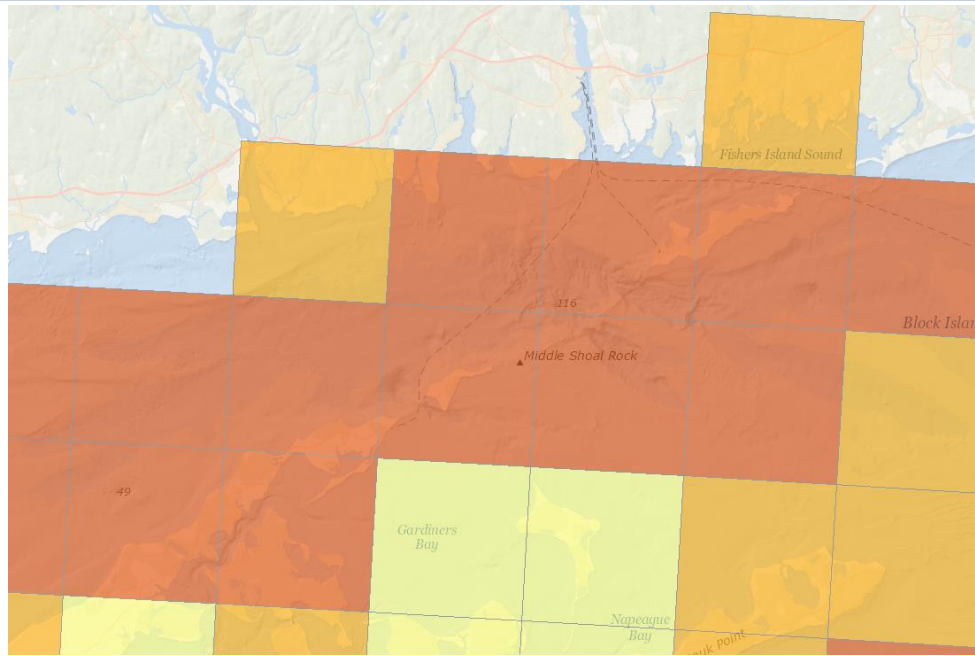
**Access Instructions:** Go to <http://portal.midatlanticocean.org/visualize>. Go to Recreation > Coastal Recreation Survey > Shore-Based Activities



# Human Use Synthesis – Maritime Data

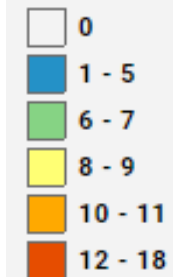
## Mid-Atlantic Marine Planner

**Source:** Various input data as determined by Mid-Atlantic Ocean Data Portal project team organization and partners; HUDS grid data available upon request



### HUDS Theme - Maritime Data

#### Total



# Human Use Synthesis – Maritime Data

**Blue Plan Sector(s):** Maritime Activities (Marine Transportation, Recreation, Fish & Shellfish Resources)

**Summary Description:** This is a theme product which shows the number of maritime data layers (21 in all) which have data that occurs within a given grid cell, along with pertinent descriptive and spatial information which characterize what type of data are present in a cell. Maritime layers include gridded activity data based on Automatic Identification System (AIS) vessel traffic from 2013 as well as non-activity information including anchorage areas, aids to navigation, maintained channels, and disposal sites. By clicking on a cell, users may view the attributes in a pop up box. There are anywhere from one to three attributes per layer which identify 1) descriptive information about the data, 2) statistical information on the area or length of features, or the number of locations within a cell, and 3) the count of features in a cell. Source: Various input data as determined by Mid-Atlantic Ocean Data Portal project team organization and partners; HUDS grid data available upon request. Notes: Source layers included in this theme are: Aids to Navigation, Anchorage Grounds, Maintained Channels, Federal OCS Sand/Gravel Borrow Lease Areas, Wrecks & Obstructions, Submarine Cables, Routing Measures, Pilot Boarding Areas, N. Atlantic Right Whale SMAs, Port Facilities, Ocean Disposal Sites, Offshore Discharge Locations, and AIS Vessel Density 2013 (Cargo, Fishing, Military, Passenger, Pleasure, Tug/Tow, Tanker, All Others, Not Available).

**Full Description:**

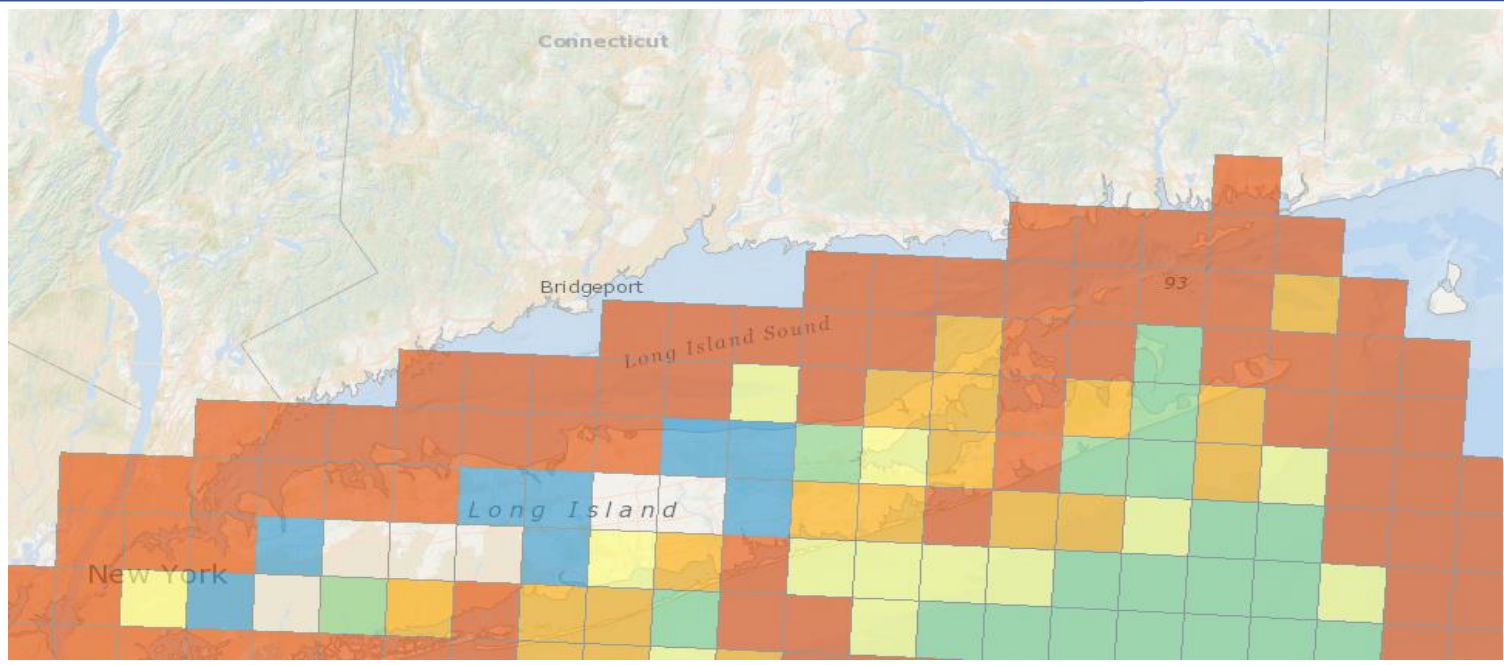
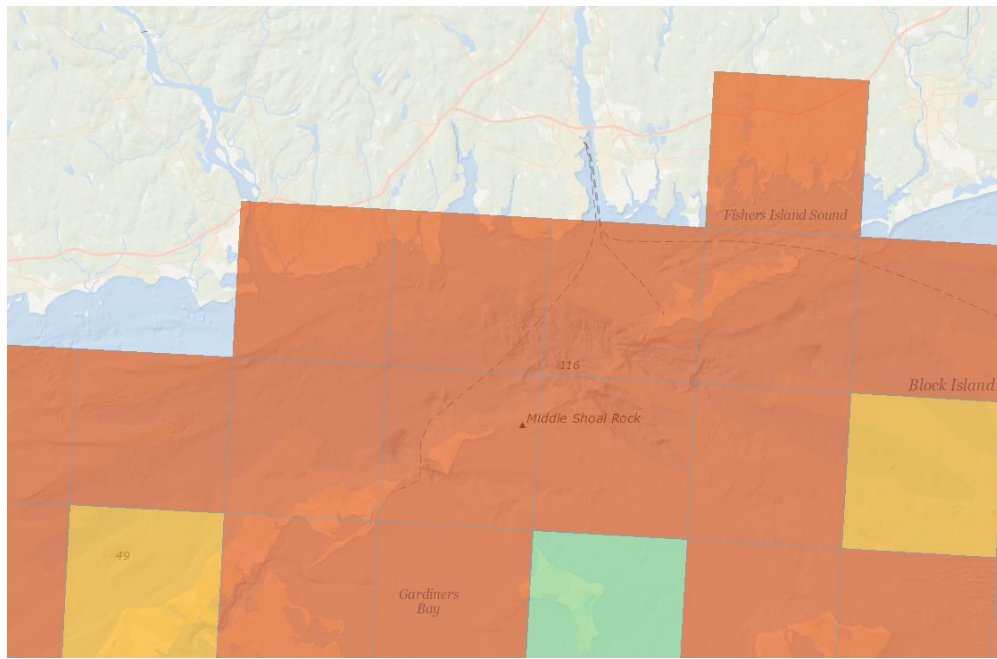
[http://portal.midatlanticocean.org/static/data\\_manager/metadata/html/HUDS\\_Summary\\_Data\\_Presence.html](http://portal.midatlanticocean.org/static/data_manager/metadata/html/HUDS_Summary_Data_Presence.html)

**Access Instructions:** <http://portal.midatlanticocean.org/visualize/>, go to Human Use Data Synthesis, "Theme – Maritime Data"



# Human Use Synthesis – Use Intensity Maritime Data

## Mid-Atlantic Marine Planner

**Source:** Various input data as determined by Mid-Atlantic Ocean Data Portal project team organization and partners; HUDS grid data available upon request



### HUDS Theme - Maritime Data Use Intensity

-  N/A
-  Very Low
-  Low
-  Medium
-  High
-  Very High



# Human Use Synthesis – Use Intensity Maritime Data



**Blue Plan Sector(s):** Maritime Activities (Marine Transportation, Recreation, Fish & Shellfish Resources)

**Summary Description:** This data layer shows the intensity of maritime data layers (21 in all) which have data that occur within a given grid cell, along with the classification of intensity present in a cell. These data are based upon the HUDS theme maritime presence data. Maritime layers include gridded activity data based on Automatic Identification System (AIS) vessel traffic from 2013 as well as non-activity information including anchorage areas, aids to navigation, maintained channels, and disposal sites. By clicking on a cell, users may view the attributes in a pop up box. There are anywhere from one to three attributes per layer which identify 1) descriptive information about the data, 2) statistical information on the area or length of features, or the number of locations within a cell, and 3) the count of features in a cell. Important: It should be noted the same fishing activity may be represented by both VMS and Communities At Sea data, this should be considered when using these data. Source: Various input data as determined by Mid-Atlantic Ocean Data Portal project team organization and partners; HUDS grid data available upon request. Notes: Source layers included in this theme are: VMS (herring, monkfish, multispecies, scallop, surfclam/ocean quahog); Communities at Sea based on VTR (dredge, gillnet, groundfish > 65ft, groundfish <65ft, lobster, longline, pots/traps, seine, shrimp); and Artificial Reefs.

**Full Description:**

[http://portal.midatlanticocean.org/static/data\\_manager/metadata/html/HUDS\\_Summary\\_Data\\_Use\\_Intensity.html](http://portal.midatlanticocean.org/static/data_manager/metadata/html/HUDS_Summary_Data_Use_Intensity.html)

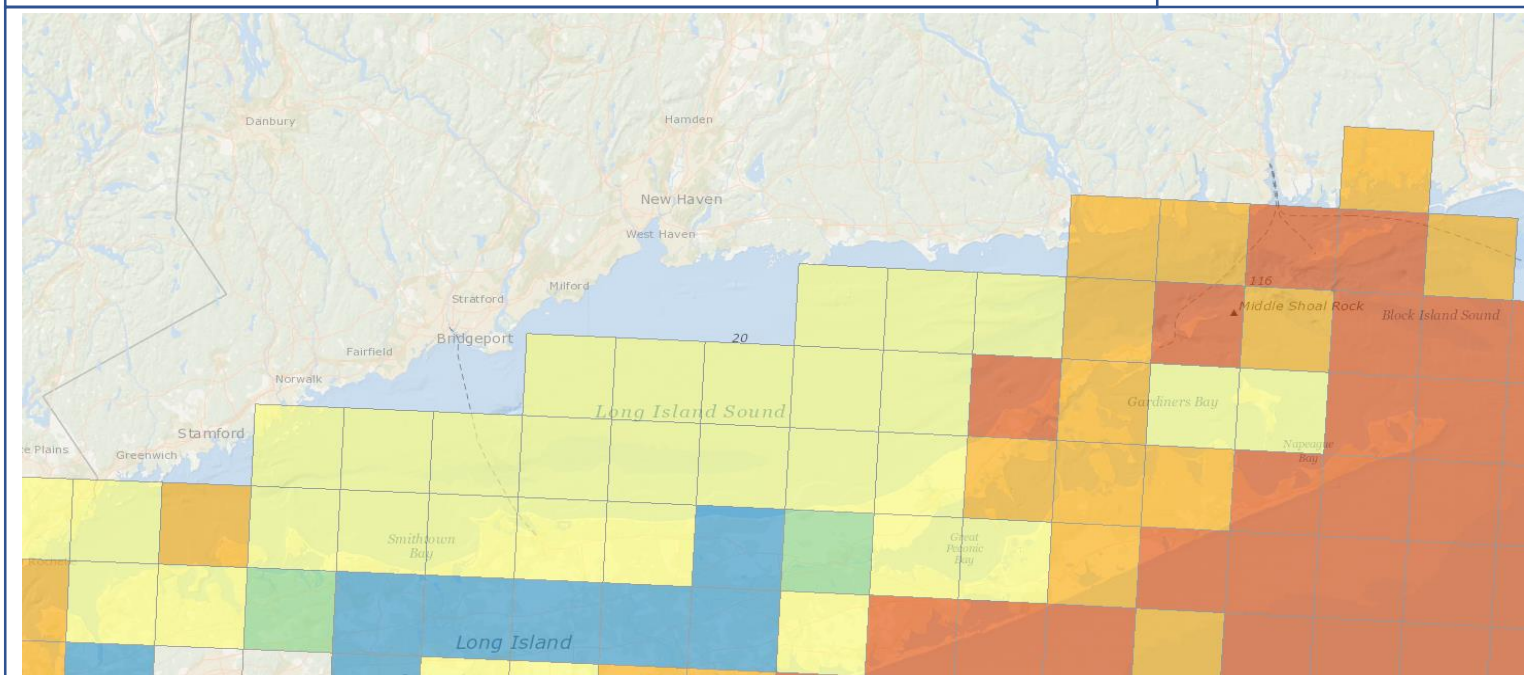
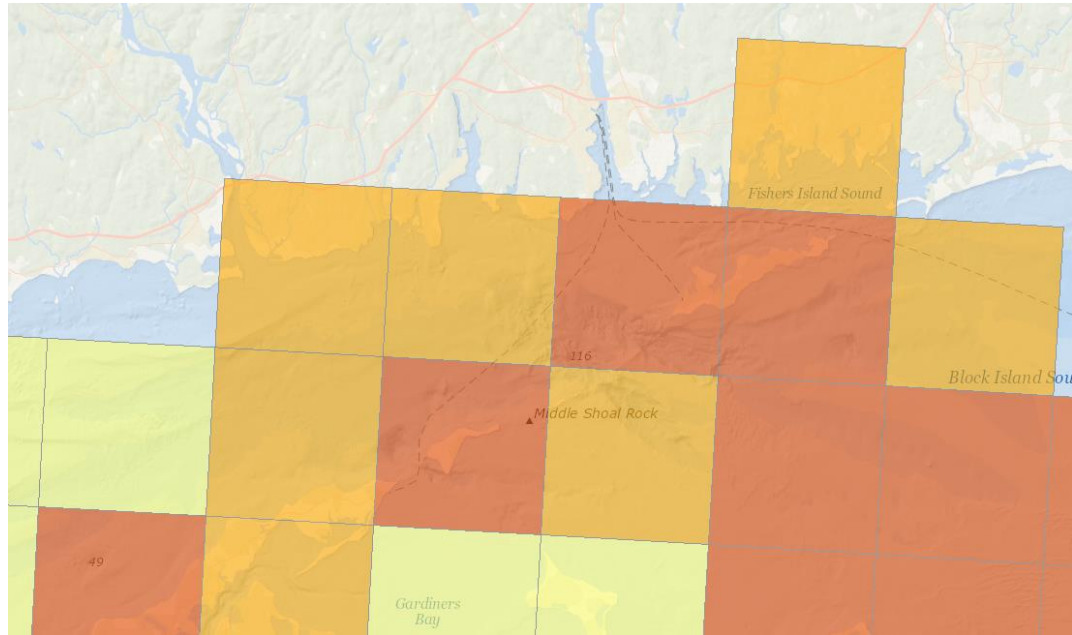
**Access Instructions:** <http://portal.midatlanticocean.org/visualize/>, go to Human Use Data Synthesis, “Use Intensity – Maritime Data”



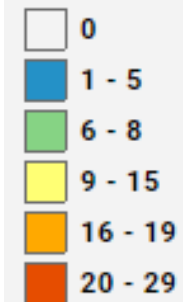
# Human Use Synthesis - Activity

Mid-Atlantic Marine Planner

**Source:** Various input data as determined by Mid-Atlantic Ocean Data Portal project team organization and partners; HUDS grid data available upon request



## HUDS Type - Activity Data Total



# Human Use Synthesis - Activity

**Blue Plan Sector(s)**: Maritime Activities (Marine Transportation, Recreation, Fish & Shellfish Resources)

**Summary Description**: This is a theme product which shows the number of activity data layers (32 in all) which have data that occurs within a given grid cell, along with pertinent descriptive and spatial information which characterize what type of data are present in a cell. Activity layers include data for vessel traffic (e.g. AIS), fishing (e.g. Communities at Sea based on VTR, VMS), and recreational activities. By clicking on a cell, users may view the attributes in a pop up box. There are anywhere from one to three attributes per layer which identify 1) descriptive information about the data, 2) statistical information on the area or length of features, the sum of raster grid cells, or the number of activities within a cell, and 3) the count of features in a cell. Sources: Various input data as determined by Mid-Atlantic Ocean Data Portal project team organization and partners; HUDS grid data available upon request. Source layers included in this theme are: VMS (herring, monkfish, multispecies, scallop, surfclam/ocean quahog); Communities at Sea (dredge, gillnet, groundfish > 65ft, groundfish <65ft, lobster, longline, pots/traps, seine, shrimp); AIS Vessel Density 2013 (Cargo, Fishing, Military, Passenger, Pleasure, Tug/Tow, Tanker, All Others, Not Available), Recreational Boater Activities, Recreational Boater Routes; Coastal Use Surveys (Surface Water Activities, Shore Based Activities, Underwater Activities, Wildlife/Sight Seeing Activities); and PGIS data (NJ Sport fishing, VA to NJ Recreational Uses, NY Recreational Uses).

**Full Description:**

[http://portal.midatlanticocean.org/static/data\\_manager/metadata/html/HUDS\\_All\\_Data\\_Synthesis.html](http://portal.midatlanticocean.org/static/data_manager/metadata/html/HUDS_All_Data_Synthesis.html)

**Access Instructions:** <http://portal.midatlanticocean.org/visualize/>, go to Human Use Data Synthesis, “Type – Activity Data”