



STATE OF CONNECTICUT

CONNECTICUT SITING COUNCIL

Ten Franklin Square, New Britain, CT 06051

Phone: (860) 827-2935 Fax: (860) 827-2950

E-Mail: siting.council@po.state.ct.us

Web Site: www.ct.gov/csc

Post-Construction Report

Date: July 11, 2014

Re: **DOCKET NO. 411** - New Cingular Wireless PCS, LLC application for a Certificate of Environmental Compatibility and Public Need for the construction, maintenance and operation of a telecommunications facility located at 1363 Boston Post Road, Old Saybrook, Connecticut.

In this docket, AT&T proposed building a 100-foot tall monopole telecommunications tower within a 45-foot by 80-foot compound on a 7.5-acre property owned by the Wilcox Family, LLC. The property is improved with buildings used for various purposes including an electrical supply wholesaler, car storage, motorcycle parts sales, a martial arts studio, and a residence. The Council approved the proposed facility on April 28, 2011. The Development and Management Plan was approved on October 20, 2011.

I visited this site on July 11, 2014. At the time of my visit, all work on the facility was complete. The tower was erected with one set of antennas, AT&T's, at the top. The compound was well graveled and enclosed by an eight-foot chain link fence. All utilities were hooked up. There were six meter placements on the compound's utility board with one meter for AT&T in place. AT&T had an equipment shelter and a diesel generator inside the compound. The compound was becoming somewhat weedy, and AT&T should do so some clearing inside the compound before the incipient weeds become problematic.

This facility is located on level ground not far to the north of Route 1. It is in a clearing surrounded by thick vegetation. The only view through this vegetation is through the opening made by the gravel drive that provides vehicular access to the facility. As the facility is on very level ground, there was no need for any grading at this site. As one might expect, there were no signs of erosion at the time of my visit.

Visibility of this tower is almost non-existent. As I turned from Route 1 onto the private road that ends where the access road to the facility begins, I was surprised that I couldn't immediately see the tower. For a moment, I thought I might be on the wrong road, but I remembered this location clearly from the field review. Then I saw the tower peeking from behind tall pine trees at the end of the road. Unless one were actively looking for the tower as I was, it would be easy to remain unaware that there was a tower at this location.

Conditions observed at the site at the time of my visit conformed to the approved D&M plans.

View of tower



View of base compound



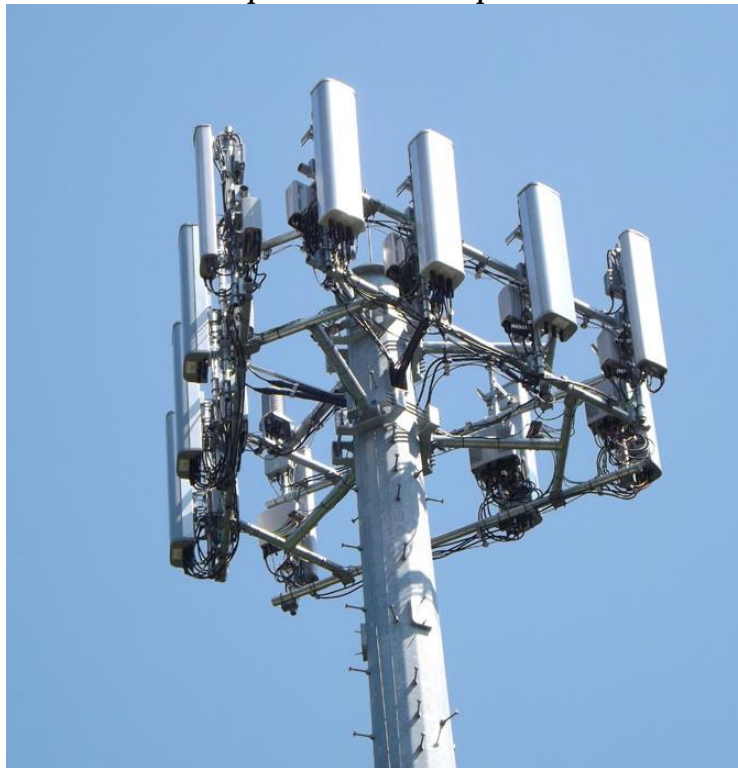
AT&T Generator



Equipment shelter



Close up of antennas at top of tower



View of tower near Route 1

