



# STATE OF CONNECTICUT

## CONNECTICUT SITING COUNCIL

Ten Franklin Square, New Britain, CT 06051

Phone: (860) 827-2935 Fax: (860) 827-2950

E-Mail: [siting.council@po.state.ct.us](mailto:siting.council@po.state.ct.us)

Web Site: [www.ct.gov/csc](http://www.ct.gov/csc)

Date: June 6, 2012

RE: Post-Construction Report – **Docket 385** - Florida Tower Partners, LLC Certificate of Environmental Compatibility and Public Need for the construction, maintenance and management of a telecommunications facility located at 23 Stonybrook Road, Stratford, Connecticut.

---

On February 25, 2010, the Council approved an application from T-Mobile Northeast LLC for the construction of a 100-foot monopole at 23 Stonybrook Road, Stratford. The site is to the rear of a small commercial plaza located at the corner of Stonybrook Road and Broadbridge Avenue. Residential areas abut the site to the west and north. Commercial property abuts to the east. A small brook and town park is located to the south.

The D&M Plan for the project, except for the utility route, was approved on October 21, 2010. The utility route was approved on March 17, 2011. The Council approved a Transfer of Certificate to Florida Tower Partners (FTP) on January 6, 2011. FTP notified the Council on December 15, 2011 that site construction was completed and the site was operational.

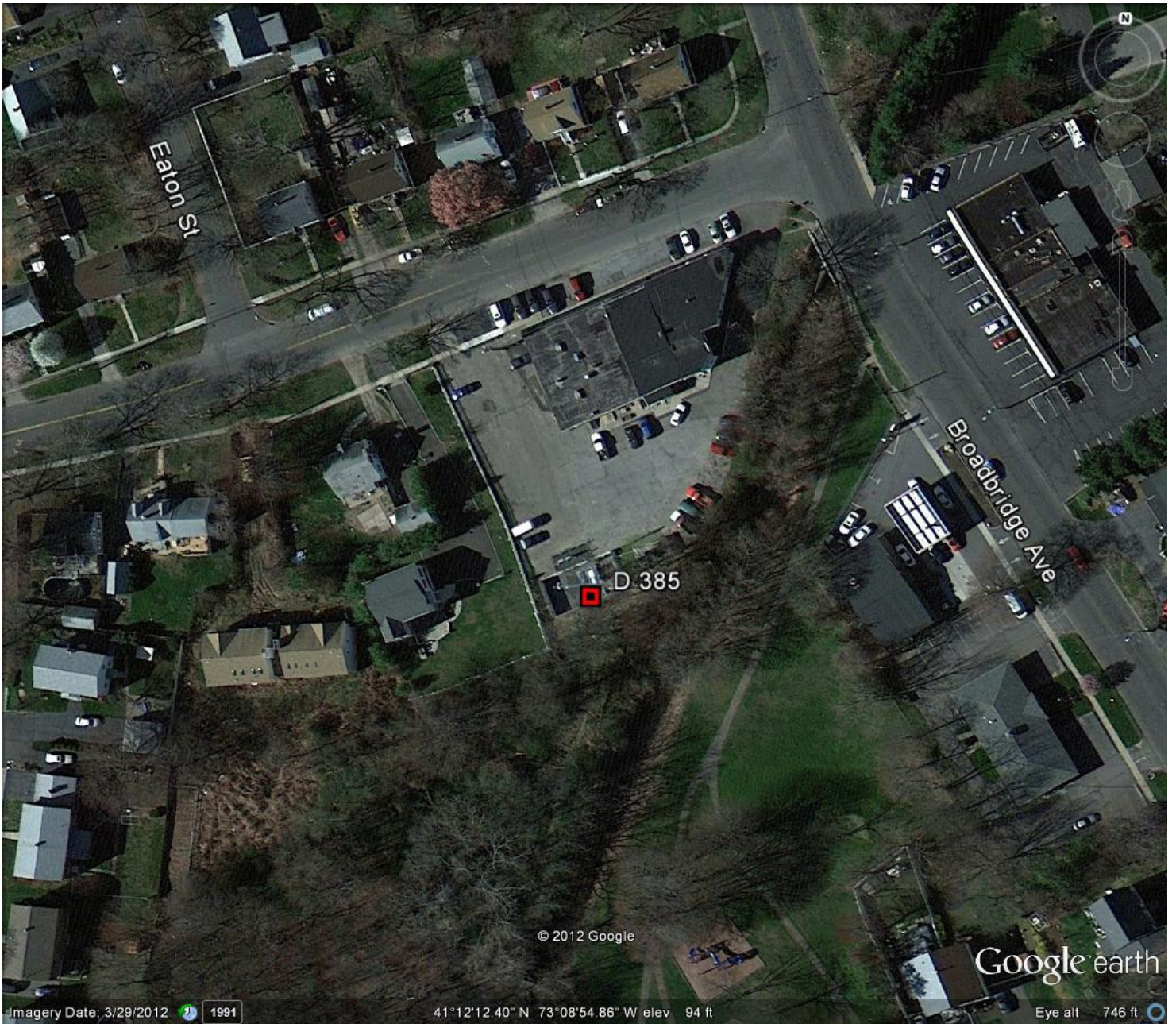
I conducted a field review of the site on March 27, 2012. At the time of field review, the site was in service and utilities were in place. The site consists of a 100-foot monopole with a white finish. T-Mobile installed three flush-mounted panel antennas at the 98-foot level of the tower. According to the tower specifications, the tower can support three levels of flush-mounted antennas. No other carrier was located at the site although Clearwire was approved to locate at the site in July 2010.

As ordered by the Council's D&O, FTP constructed a 26-foot by 50-foot compound oriented in an east-west configuration. T-Mobile installed two equipment cabinets on a metal platform within the compound. The compound is enclosed by an eight-foot high stockade fence, painted white. The compound is accessed through an existing parking lot. The utility board is located outside of the compound and is protected by bollards. A new utility pole for overhead utilities was installed within the compound. FTP installed six evergreens on the west side of the compound to provide screening for an adjacent residence.

There are no site construction-related issues at the site. A silt fence remains along the south side of the construction area and I contacted FTP, requesting that it be removed. The Arborvitae plantings appeared healthy.

Existing views of the tower generally conform to predicted views. The tower is substantially visible from the neighborhood immediately adjacent to the site, especially along Stonybrook Road.

The observed conditions of this site conform to the D&M Plan approved by the Council.



Site location at 23 Stonybrook Road, behind a commercial plaza. Nearest residence is approximately 85 feet west of the tower.



Site view from Stonybrook Road. Commercial plaza is to left, property line to right (white fence)



Utility board with bollard protection. Fenced area to far left is for plaza trash bins.



T-Mobile's antenna installation



T-Mobile's radio equipment



Predicted view of tower from Stonybrook Road and Broadbridge intersection, 380 feet northeast of site.



Actual view of tower.



Predicted view of tower from intersection of Marcroft Street and Chevy Street, 900 feet east of tower.



Actual view



View of site from Stonybrook Road at Eaton Street. Houses are located across the street and one house is behind the white house in the photo above. The plaza is to the left, out of view.