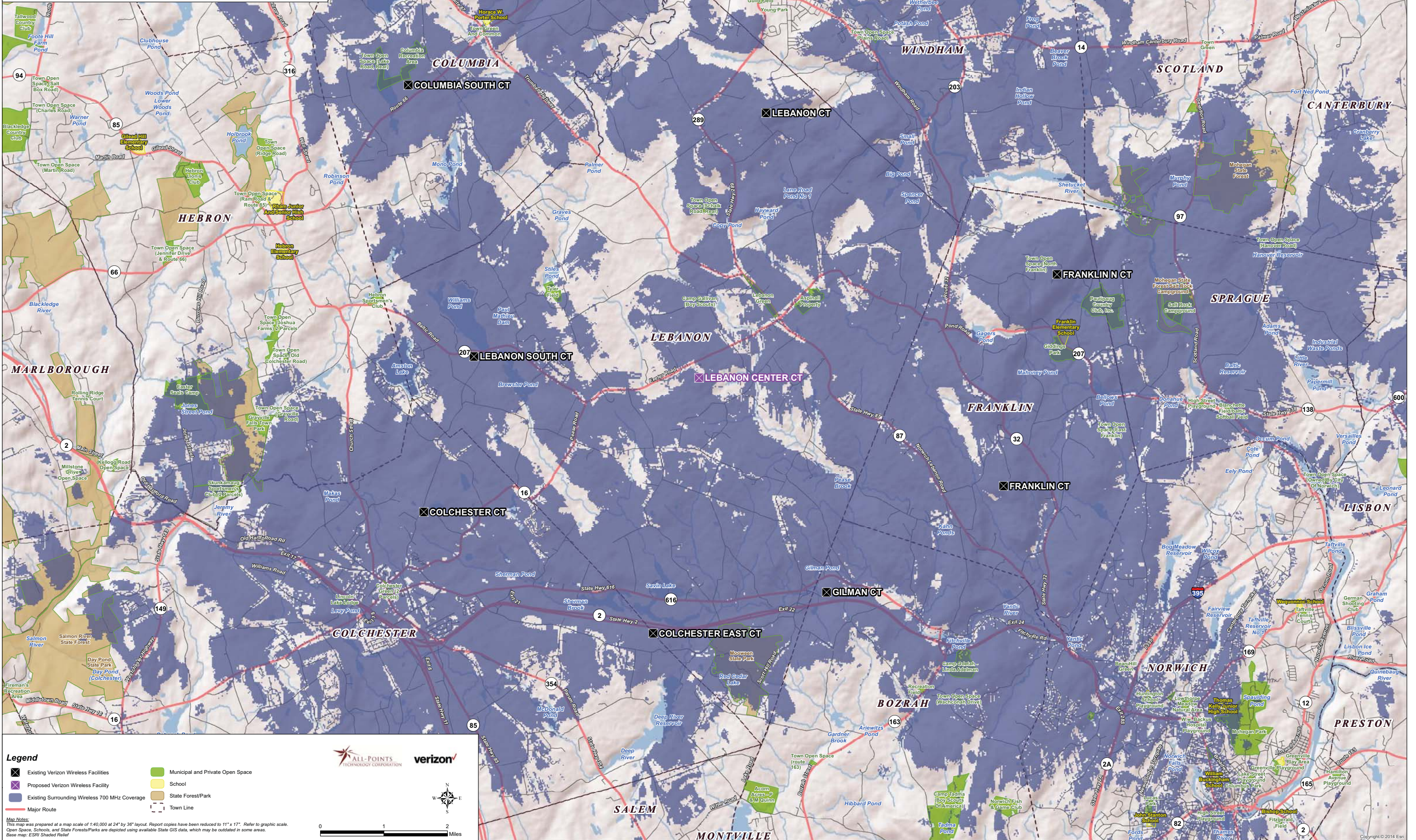


**Existing Verizon Wireless 700 MHz Coverage  
Lebanon, Connecticut and Surrounding Area  
(\*Map Scale is 1:40,000)**

Coverage is depicted at a signal threshold of 120 dB Operational Path Loss



**Legend**

- Existing Verizon Wireless Facilities
- Proposed Verizon Wireless Facility
- Existing Surrounding Wireless 700 MHz Coverage
- Major Route
- Municipal and Private Open Space
- School
- State Forest/Park
- Town Line

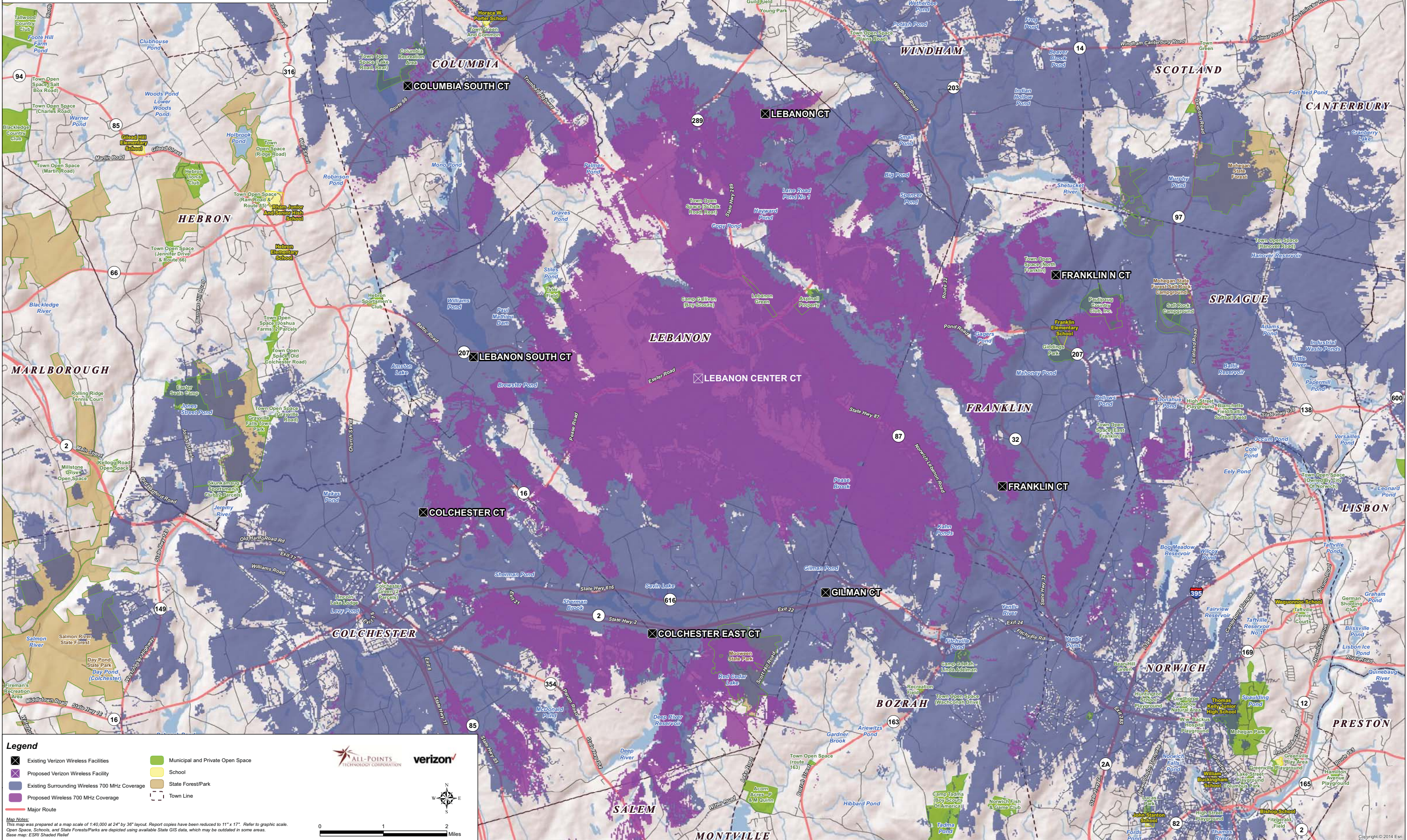
**Map Notes:**  
This map was prepared at a map scale of 1:40,000 at 24" by 36" layout. Report copies have been reduced to 11" x 17". Refer to graphic scale.  
Open Space, Schools, and State Forests/Parks are depicted using available State GIS data, which may be outdated in some areas.  
Base map: ESRI Shaded Relief

0 1 2 Miles

© 2014 Verizon Wireless. All rights reserved. Verizon Wireless is a registered trademark of Verizon Wireless. All other trademarks are the property of their respective owners.

**Proposed Verizon Wireless 700 MHz Coverage  
Lebanon, Connecticut and Surrounding Area  
(\*Map Scale is 1:40,000)**

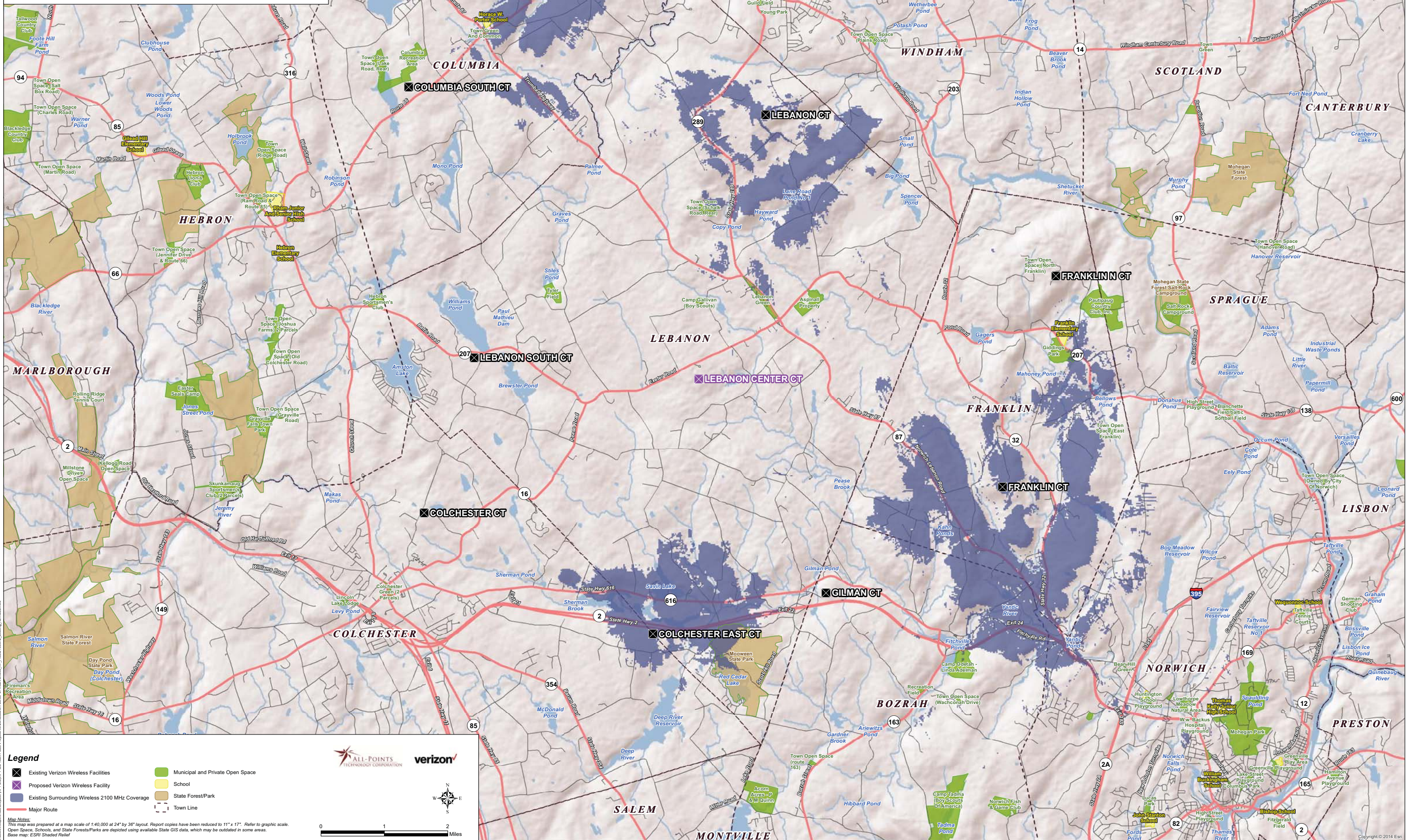
Coverage is depicted at a signal threshold of 120 dB Operational Path Loss



Map Notes: This map was prepared at a map scale of 1:40,000 at 24" by 36" layout. Report copies have been reduced to 11" x 17". Refer to graphic scale. Open Space, Schools, and State Forests/Parks are depicted using available State GIS data, which may be outdated in some areas. Base map: ESRI Shaded Relief

**Existing Verizon Wireless 2100 MHz Coverage  
Lebanon, Connecticut and Surrounding Area  
(\*Map Scale is 1:40,000)**

Coverage is depicted at a signal threshold of 120 dB Operational Path Loss



**Legend**

- X Existing Verizon Wireless Facilities
- Proposed Verizon Wireless Facility
- Existing Surrounding Wireless 2100 MHz Coverage
- Major Route
- Municipal and Private Open Space
- School
- State Forest/Park
- Town Line

ALL-POINTS TECHNOLOGY CORPORATION

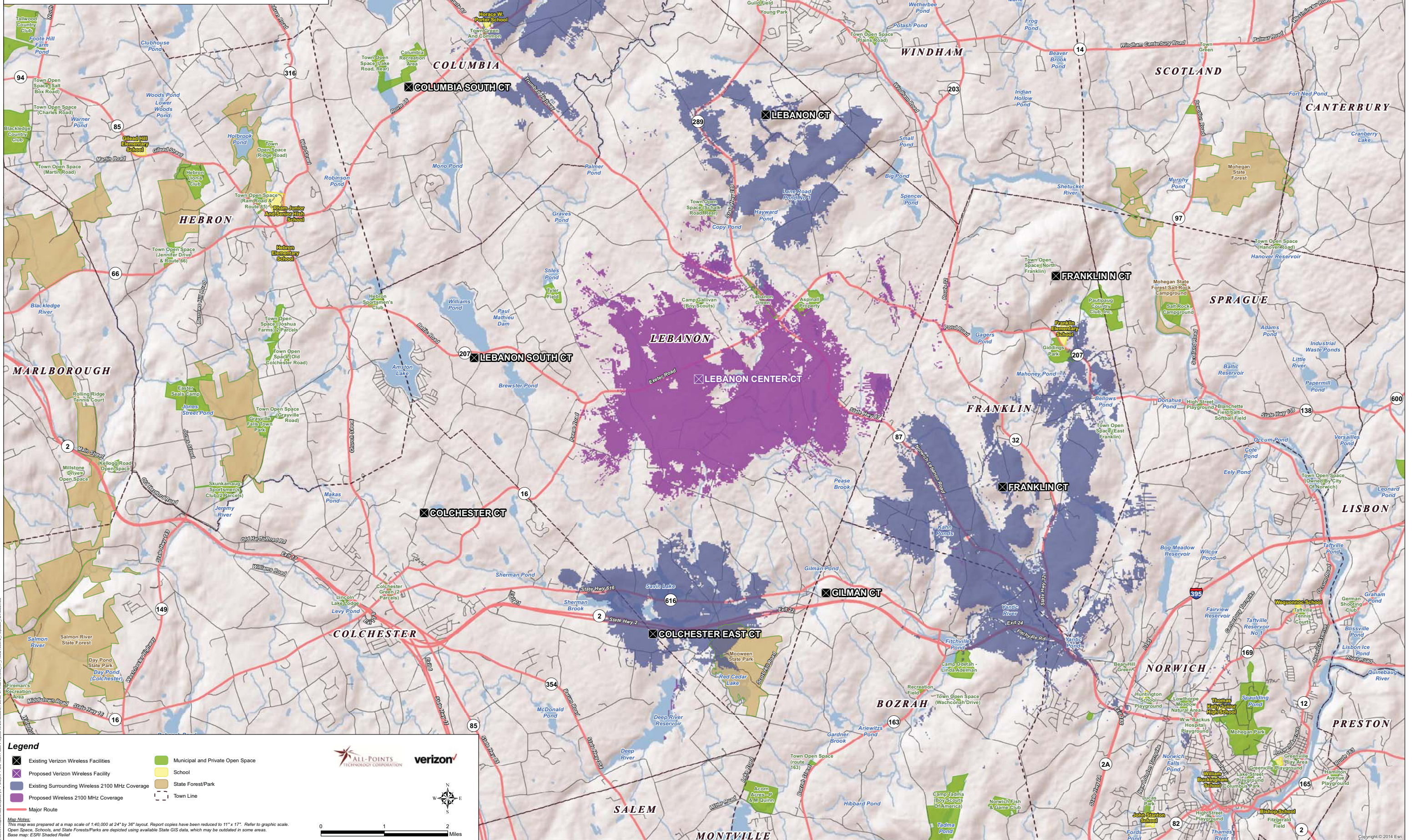
verizon

0 1 2 Miles

**Map Notes:**  
This map was prepared at a map scale of 1:40,000 at 24" by 36" layout. Report copies have been reduced to 11" x 17". Refer to graphic scale.  
Open Space, Schools, and State Forests/Parks are depicted using available State GIS data, which may be outdated in some areas.  
Base map: ESRI Shaded Relief

**Proposed Verizon Wireless 2100 MHz Coverage  
Lebanon, Connecticut and Surrounding Area  
(\*Map Scale is 1:40,000)**

Coverage is depicted at a signal threshold of 120 dB Operational Path Loss



- Legend**
- Existing Verizon Wireless Facilities
  - Proposed Verizon Wireless Facility
  - Existing Surrounding Wireless 2100 MHz Coverage
  - Proposed Wireless 2100 MHz Coverage
  - Major Route
  - Municipal and Private Open Space
  - School
  - State Forest/Park
  - Town Line

**Map Notes:**  
This map was prepared at a map scale of 1:40,000 at 24" by 36" layout. Report copies have been reduced to 11" x 17". Refer to graphic scale.  
Open Space, Schools, and State Forests/Parks are depicted using available State GIS data, which may be outdated in some areas.  
Base map: ESRI Shaded Relief

ALL-POINTS TECHNOLOGY CORPORATION

verizon

0 1 2 Miles

© 2014 Verizon Wireless. All rights reserved. This map is a service mark of Verizon Wireless. All other marks are the property of their respective owners.