

Exhibit A

Presentations to the Towns of Berlin, Newington, and West Hartford

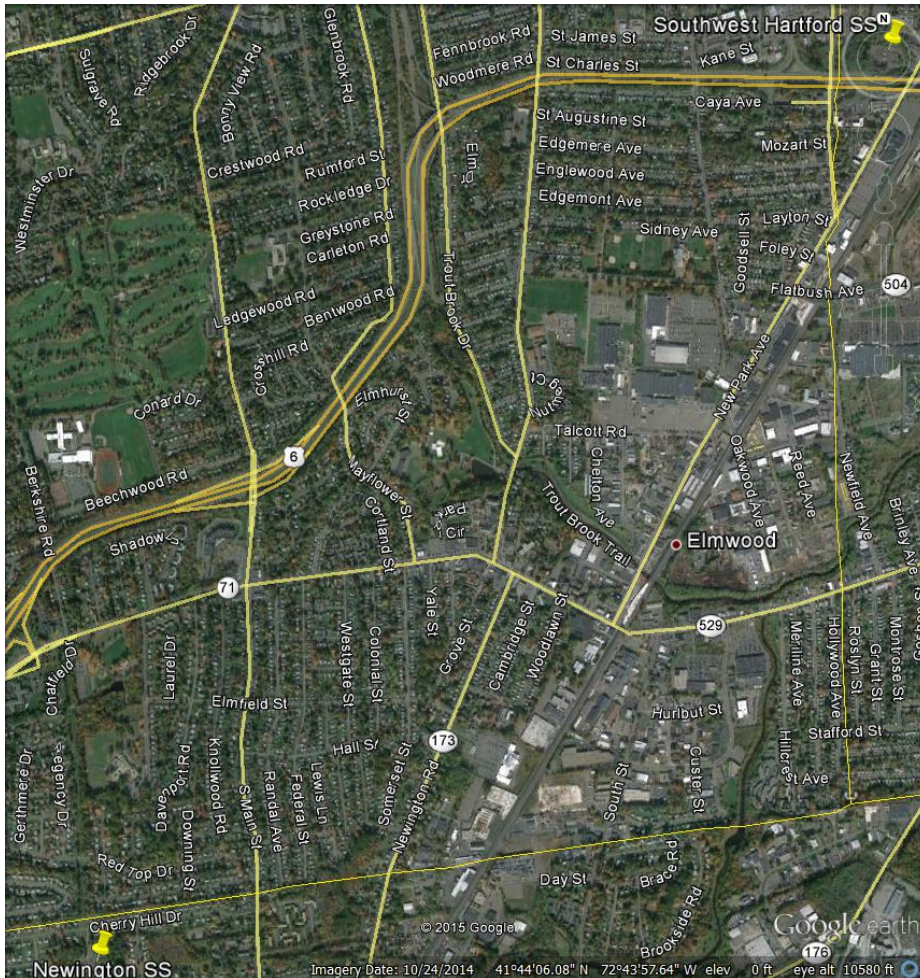
Greater Hartford/Central CT Reliability Project

Town of Newington Briefing
March 6, 2015

- Project Need
- Project Overview
- Routing Analysis
- Siting Process
- Project Timeline
- Stakeholder Outreach
- Contact Information



- Eversource works continually with the Independent System Operator of New England (ISO-NE) to study the existing electrical transmission system.
- Recent Eversource and ISO-NE studies identified a number of reliability constraints in the Greater Hartford area.



The proposed Project will:

- Install a new underground 115-kV transmission line between Newington Substation (185 Cherry Hill Drive, Newington) and Southwest Hartford Substation (271 New Park Avenue, Hartford).
- Perform substation upgrades at substations in Berlin, Newington, West Hartford, and Hartford.



**Southwest Hartford Substation
(access off of New Park Avenue,
Hartford)**



**Newington Substation
(access off of Cherry Hill
Drive, Newington)**

- The Project team is currently evaluating potential underground routes between the substations.

- Next step would be for project engineers to meet with municipal staff to gather information to be used in determining a route:
 - subsurface utility corridors
 - potential environmental issues
 - upcoming Town projects, etc.



First Step:

Eversource seeks stakeholder input as part of its Municipal Consultation Process

- ▶ Eversource submits its Municipal Consultation Filing (MCF) to the municipalities.
- ▶ As part of the MCF process, Eversource seeks municipal and public input. Written comments received are provided to the Connecticut Siting Council (CSC).
- ▶ Eversource will host an Open House to provide officials and residents the opportunity to learn more about the proposed project.

Second Step:

Eversource files its siting application with the CSC

- ▶ The CSC conducts a local public hearing and evidentiary hearings.
- ▶ The public, municipal officials and other interested stakeholders are given the opportunity to participate in the local public comment hearing.

Third Step:

The CSC Issues its Decision

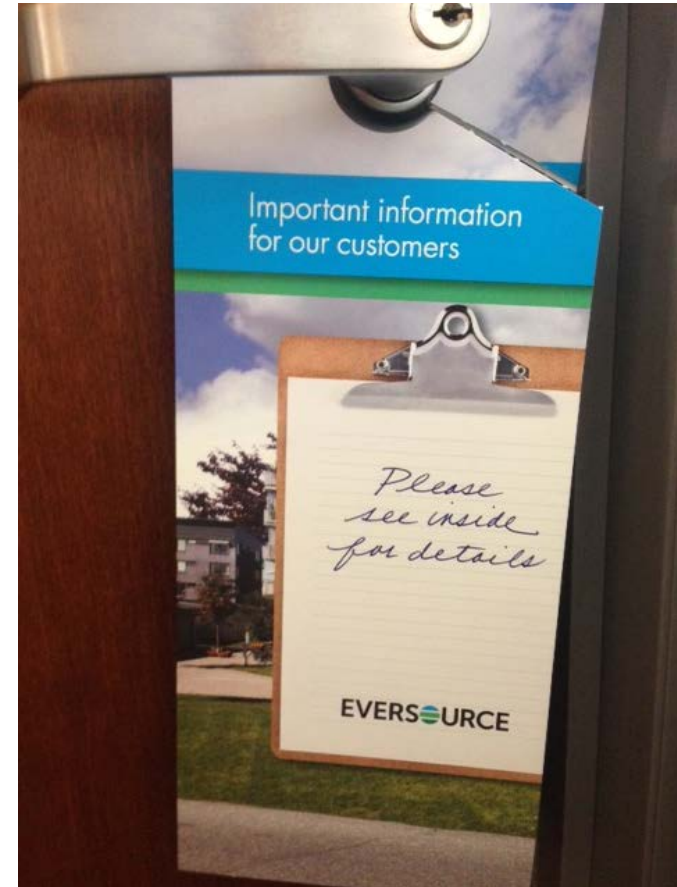
- ▶ If approved, Eversource develops construction plans, called Development and Management Plans (D&M). The D&M process traditionally offers additional opportunity for public input.

- **Initial Outreach to municipal officials – March 2015**
- **Engage municipal engineers and DPW staff – March 2015**
- **Brief Municipalities on proposed route – 3rd Quarter 2015**
- **Submit Municipal Consultation Filing to Municipalities – 3rd Quarter 2015**
- **Submit Application to the CT Siting Council – 4th Quarter 2015**
- **CSC Decision & Order – 4th Quarter 2016**
- **Pending CSC approval, submit the Development & Management Plan D&M – 1st Quarter 2017**
- **Begin Construction – 2nd or 3rd Quarter 2017**
- **In-Service Date – 2nd Quarter 2018**

- Key Stakeholders
 - Property Owners & Tenants
 - Businesses
 - Local Officials
 - State Officials

- Communication Tactics
 - Briefings, Presentations
 - Phone calls
 - E-Mail Updates

- General Public:
 - Transmission Hotline 1-800-793-2202
 - Email TransmissionInfo@eversource.com



For municipal officials:

Marcia Wellman

Transmission Project Outreach

860-728-4547

marcia.wellman@eversource.com

For the public:

Transmission Hotline 1-800-793-2202

Email: TransmissionInfo@eversource.com

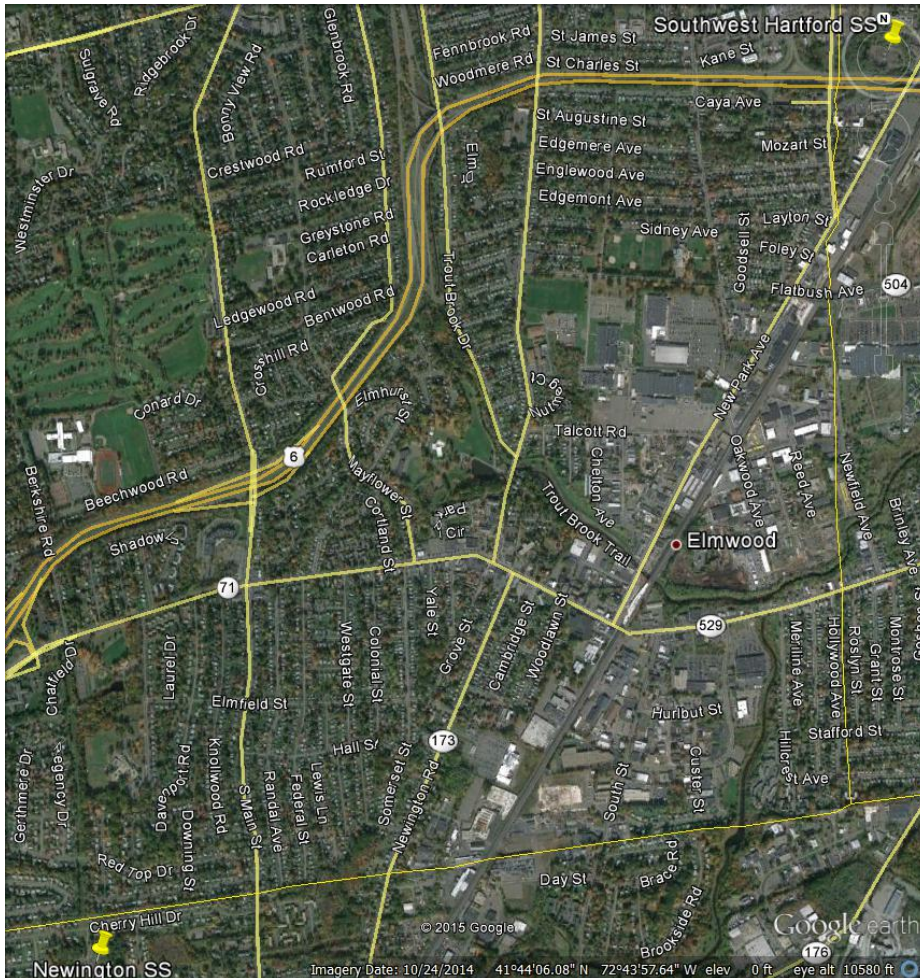
Greater Hartford/Central CT Reliability Project

Town of West Hartford Briefing
March 16, 2015

- Project Need
- Project Overview
- Routing Analysis
- Siting Process
- Project Timeline
- Stakeholder Outreach
- Contact Information



- Eversource continually works with the Independent System Operator of New England (ISO-NE) to study the existing electrical transmission system.
- Recent Eversource and ISO-NE studies identified a number of reliability constraints in the Greater Hartford area.



The proposed Project will:

- Install a new underground 115-kV transmission line between Newington Substation (185 Cherry Hill Drive, Newington) and Southwest Hartford Substation (271 New Park Avenue, Hartford).
- Perform substation upgrades at substations in Berlin, Newington, West Hartford, and Hartford.



**Southwest Hartford Substation
(access off of New Park Avenue,
Hartford)**



**Newington Substation
(access off of Cherry Hill
Drive, Newington)**

- The Project team is currently evaluating potential underground routes between the substations.

- Next step would be for project engineers to meet with municipal staff to gather information to be used in determining a route:
 - subsurface utility corridors
 - potential environmental issues
 - upcoming Town projects, etc.



First Step:

Eversource seeks stakeholder input as part of its Municipal Consultation Process

- ▶ Eversource submits its Municipal Consultation Filing (MCF) to the municipalities.
- ▶ As part of the MCF process, Eversource seeks municipal and public input. Written comments received are provided to the Connecticut Siting Council (CSC).
- ▶ Eversource will host an Open House to provide officials and residents the opportunity to learn more about the proposed project.

Second Step:

Eversource files its siting application with the CSC

- ▶ The CSC conducts a local public hearing and evidentiary hearings.
- ▶ The public, municipal officials and other interested stakeholders are given the opportunity to participate in the local public comment hearing.

Third Step:

The CSC Issues its Decision

- ▶ If approved, Eversource develops construction plans, called Development and Management Plans (D&M). The D&M process traditionally offers additional opportunity for public input.

- Initial Outreach to municipal officials – March 2015
- Engage municipal engineers and DPW staff – March 2015
- Brief Municipalities on proposed route – 3rd Quarter 2015
- Submit Municipal Consultation Filing to Municipalities – 4th Quarter 2015
- Submit Application to the CT Siting Council – 1st Quarter 2016
- CSC Decision & Order – 1st Quarter 2017
- Pending CSC approval, submit the Development & Management Plan D&M
– 2nd Quarter 2017
- Begin Construction – 3rd Quarter 2017
- In-Service Date – 2018

- Key Stakeholders
 - Property Owners & Tenants
 - Businesses
 - Local Officials
 - State Officials

- Communication Tactics
 - Briefings, Presentations
 - Phone calls
 - E-Mail Updates

- General Public:
 - Transmission Hotline 1-800-793-2202
 - Email TransmissionInfo@eversource.com



For municipal officials:

Marcia Wellman

Transmission Project Outreach

860-728-4547

marcia.wellman@eversource.com

For the public:

Transmission Hotline 1-800-793-2202

Email: **TransmissionInfo@eversource.com**

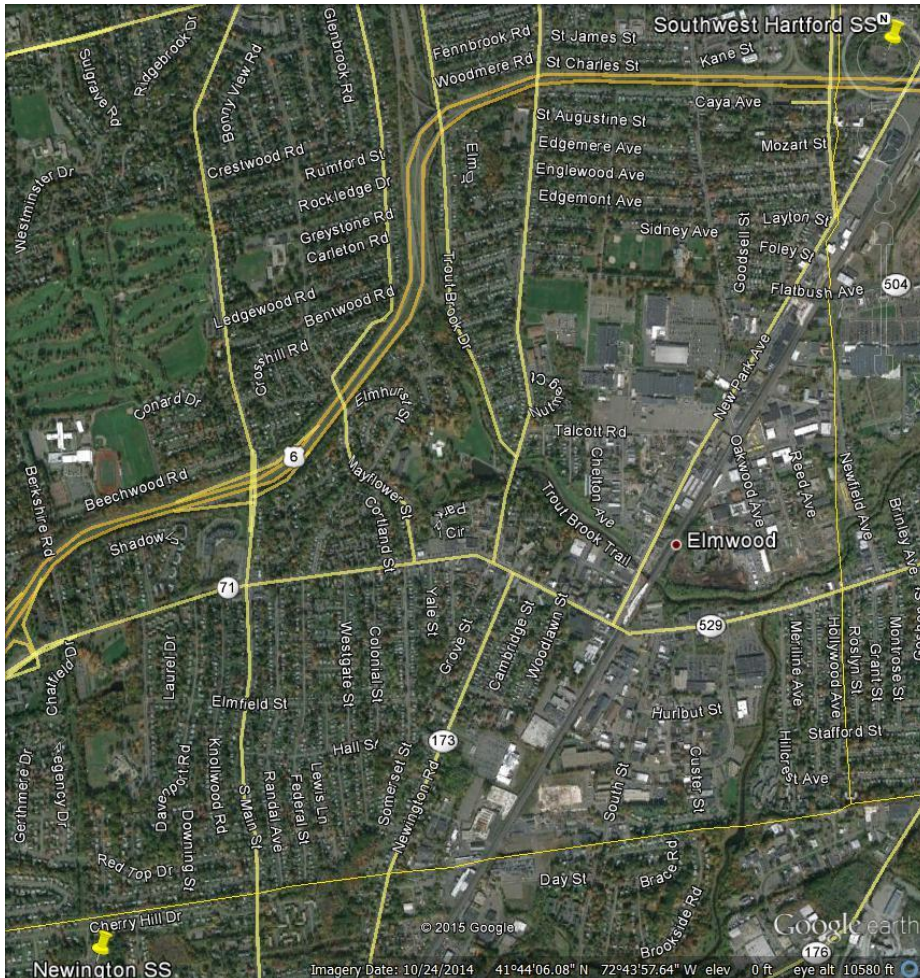
Greater Hartford/Central CT Reliability Project

Town of West Hartford Briefing
August 24, 2015

- Project Need
- Project Overview
- Route Option Summary
- What We are Proposing to Build
- Route Variations
- Typical Underground Construction
- Siting Process
- Project Timeline
- Stakeholder Outreach
- Contact Information



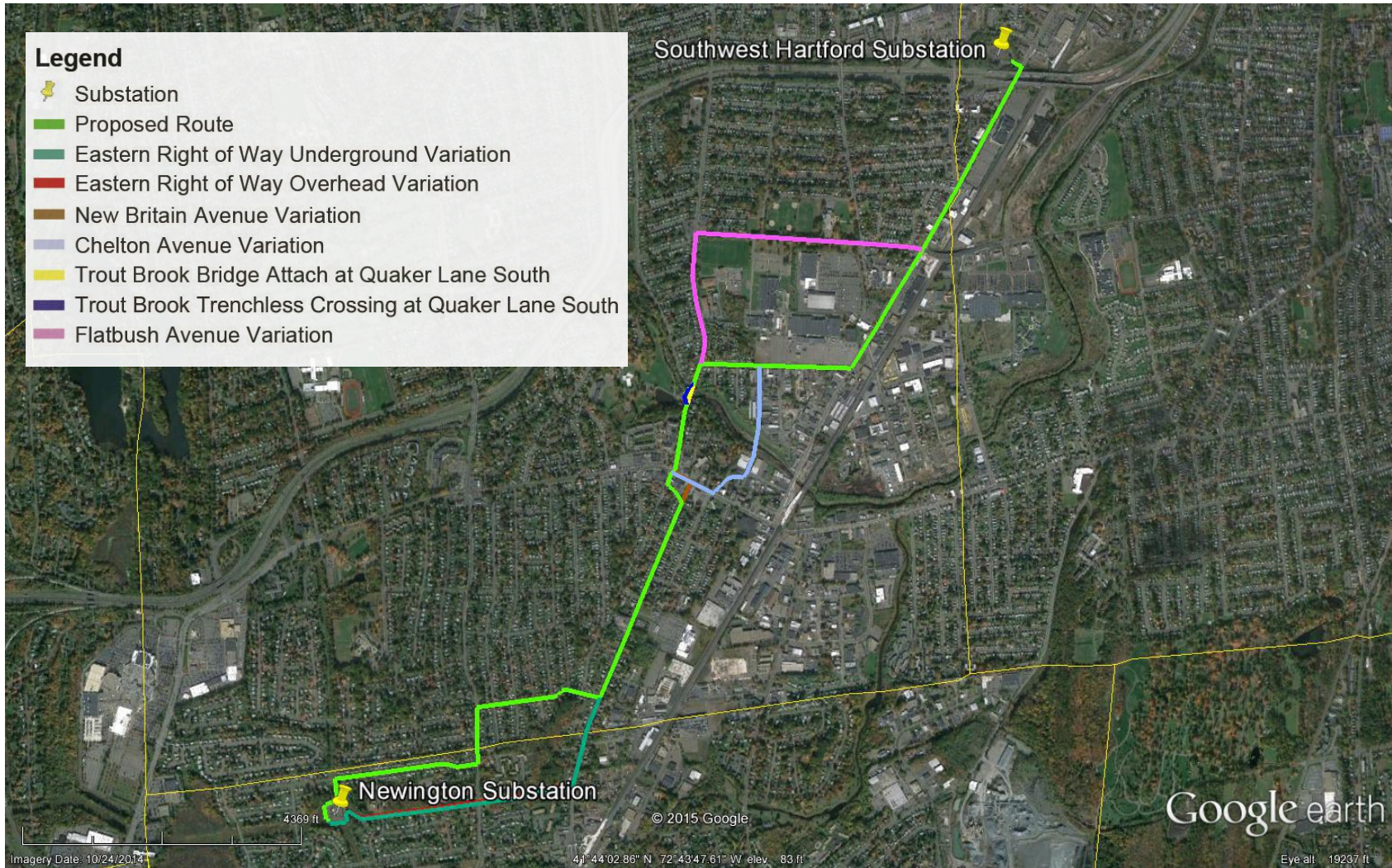
- Eversource works continually with the Independent System Operator of New England (ISO-NE) to study the electrical transmission system.
- Recent Eversource and ISO-NE studies identified a number of system reliability constraints in the Greater Hartford area.



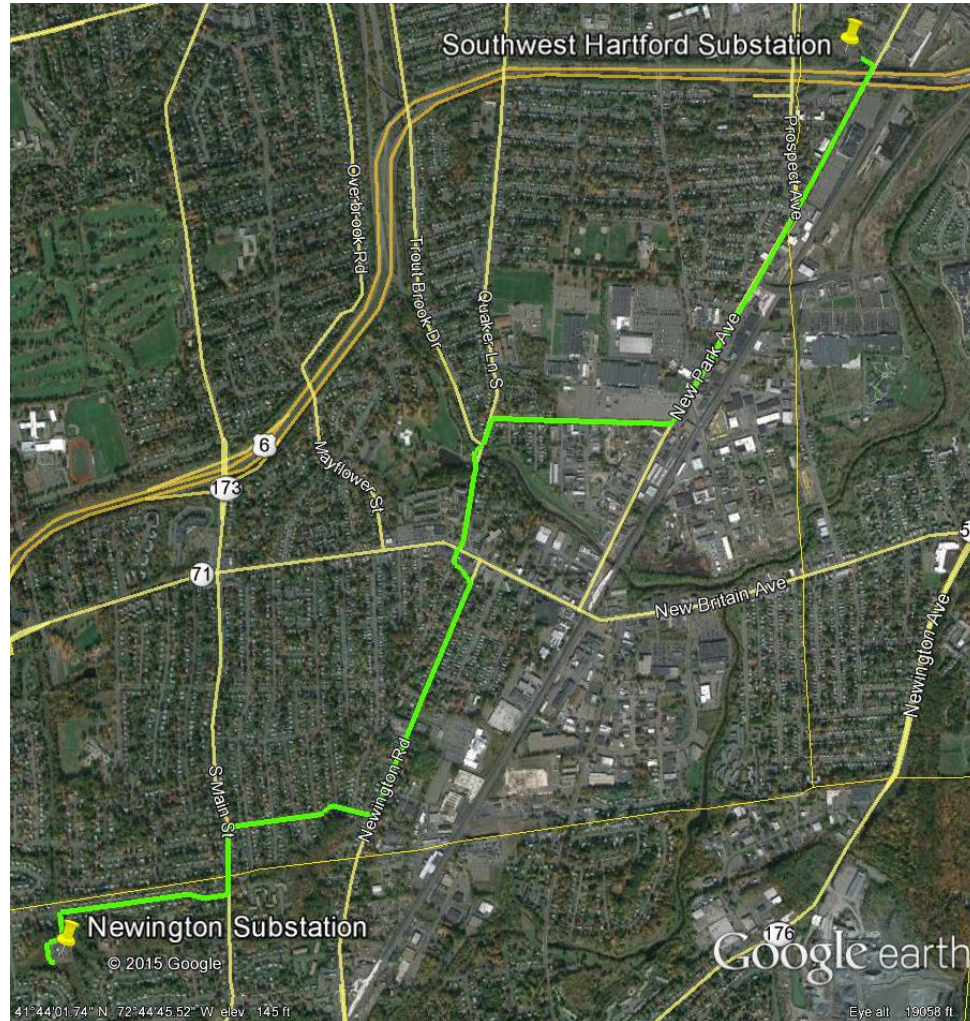
The proposed Project would:

- Install a new underground 115-kV transmission line between Newington Substation (185 Cherry Hill Drive, Newington) and Southwest Hartford Substation (271 New Park Avenue, Hartford).
- Upgrade existing substations in Newington, Hartford and Berlin

Greater Hartford/Central CT Reliability Project Route Option Summary

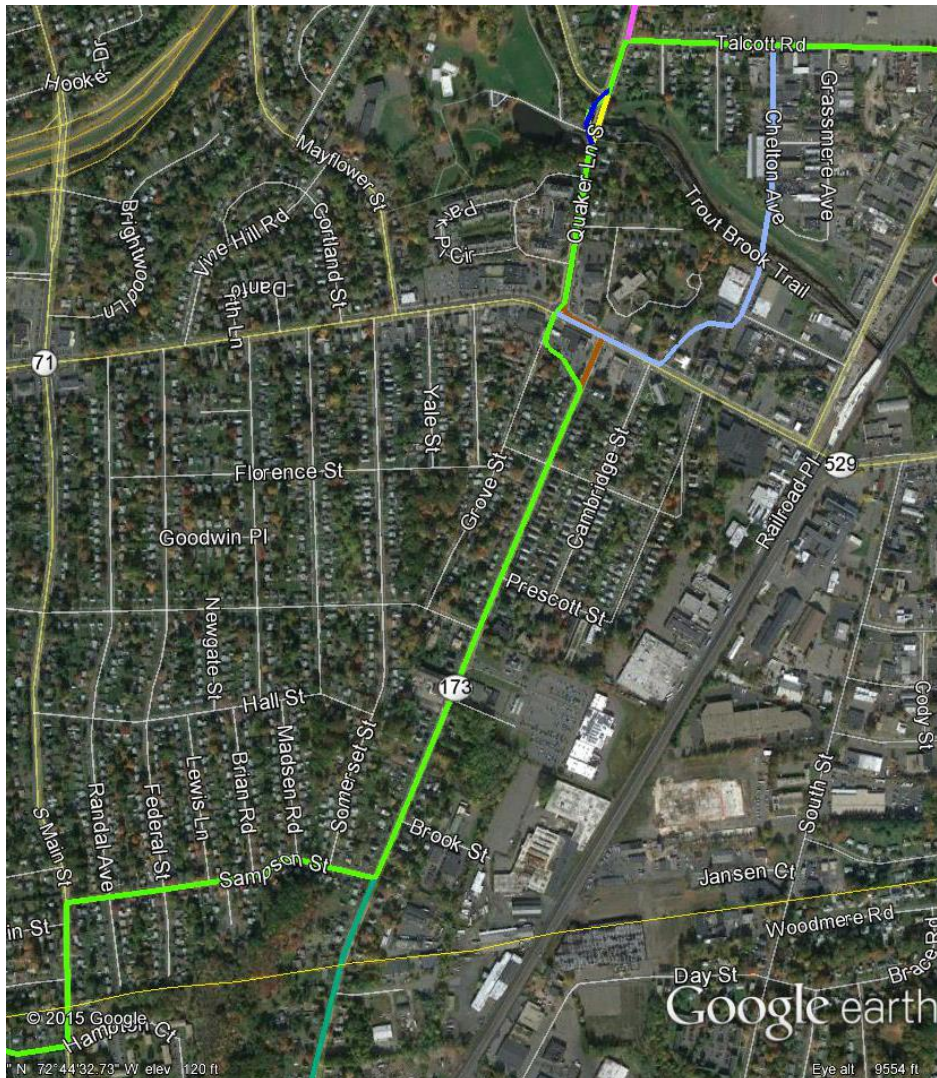


What We are Proposing to Build in West Hartford



Proposed Route

- Approximately 2.6 miles of 115-kV underground transmission line in West Hartford
 - Route follows West Hartford Road in Newington into West Hartford, turning right onto Sampson Street
 - Route follows North on Rte. 173/Newington Road, going behind Jerry's Artarama and The Fernwood.
 - The Route continues down Quaker Lane South to Beachland Park
 - Then utilizing park land, Eversource would perform a short open cut installation to cross Trout Brook.
 - After crossing Trout Brook, the Route then continues down Quaker Lane South turning right onto Talcott Road
 - The Route then turns northerly onto New Park Avenue for approximately 0.6 miles before crossing into Hartford, ultimately turning left into the Southwest Hartford Substation.



Eastern Right of Way Underground Variation

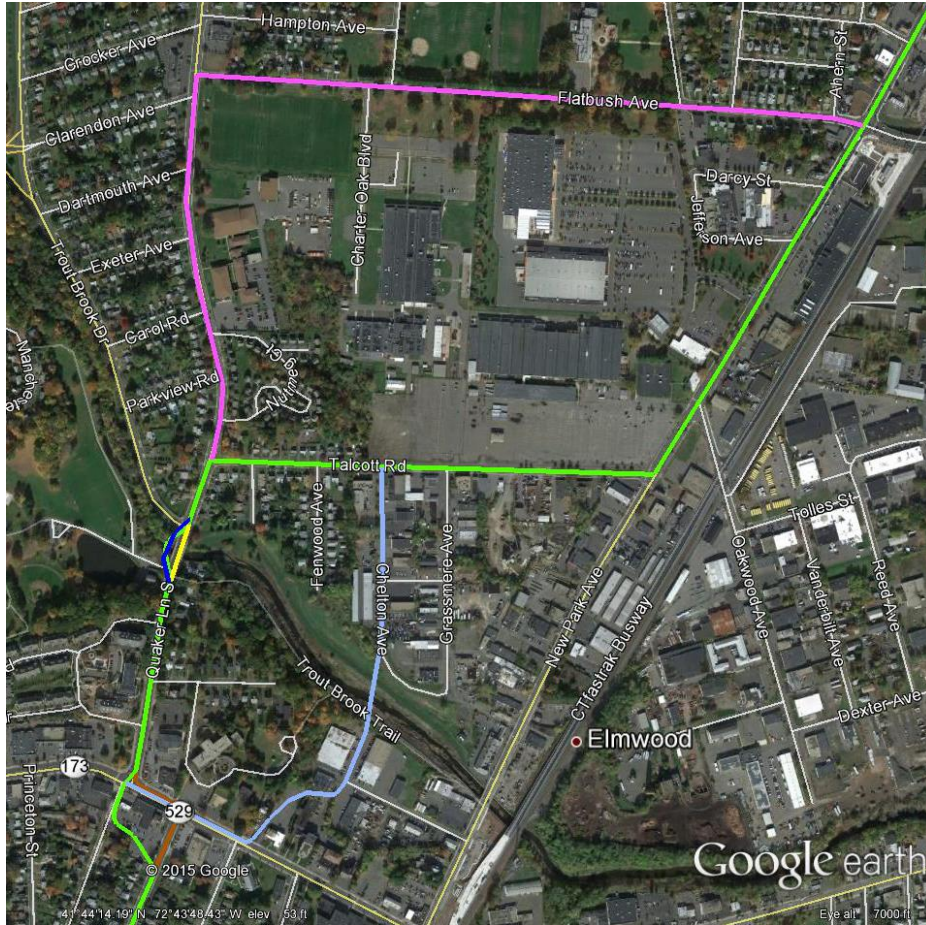
- Approximately 0.1 miles of 115-kV underground transmission line in West Hartford
 - Route enters West Hartford on Rte. 173/Newington Road, continuing for approximately 0.1 miles.

New Britain Avenue Variation

- Approximately 0.1 miles of 115-kV underground transmission line in West Hartford
 - Route continues on Rte. 173/Newington road turning left onto New Britain Avenue for 0.06 miles before turning right onto Quaker Lane South

Chelton Avenue Variation*

- Approximately 0.6 miles of 115-kV underground transmission line in West Hartford
 - Starting at the Newington Road/New Britain Avenue intersection going southeast on New Britain Avenue, turning left behind Sheehan-Hilborn-Breen Funeral Home
 - Route continues back through commercial property, Eversource would then perform a trenchless crossing of Trout Brook before reaching Chelton Avenue
 - Route moves north on Chelton Avenue for approximately 0.2 miles before turning right onto Talcott Road



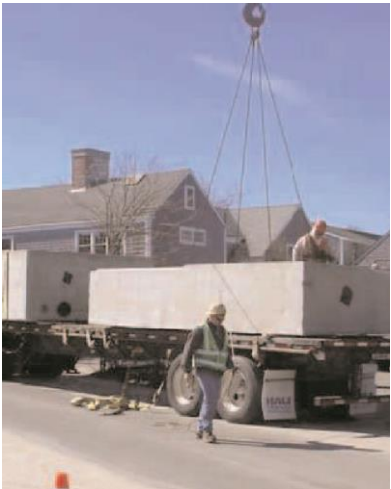
Trout Brook Bridge Attach at Quaker Lane South ——

Trout Brook Trenchless Crossing at Quaker Lane South ——

Flatbush Avenue Variation ——

- Approximately 1.8 miles of 115-kV underground transmission line in West Hartford
 - After crossing Trout Brook, the Route continues down Quaker Lane South for approximately 0.4 miles before turning right onto Flatbush Avenue
 - The Route then turns northerly onto New Park Avenue

Typical Underground Construction





First Step:

Eversource seeks stakeholder input as part of its Municipal Consultation Process

- ▶ Eversource submits its Municipal Consultation Filing (MCF) to the municipalities.
- ▶ As part of the MCF process, Eversource seeks municipal and public input. Written comments received are provided to the Connecticut Siting Council (CSC).
- ▶ Eversource will host an Open House to provide officials and residents the opportunity to learn more about the proposed project.

Second Step:

Eversource files its siting application with the CSC

- ▶ The CSC conducts a local public hearing and evidentiary hearings.
- ▶ The public, municipal officials and other interested stakeholders are given the opportunity to participate in the local public comment hearing.

Third Step:

The CSC Issues its Decision

- ▶ If approved, Eversource develops construction plans, called Development and Management Plans (D&M). The D&M process traditionally offers additional opportunity for public input.

- **Initial Outreach to municipal officials – March 2015 - Complete**
- **Engage municipal engineers and DPW staff – March 2015 - Complete**
- **Brief Municipalities on proposed route – 3rd Quarter 2015**
- **Submit Municipal Consultation Filing to Municipalities – 4th Quarter 2015**
- **Submit Application to the CT Siting Council – 1st Quarter 2016**
- **CSC Decision & Order – 1st Quarter 2017**
- **Pending CSC approval, submit the Development & Management Plan D&M – 1st Quarter 2017**
- **Begin Construction – 2nd or 3rd Quarter 2017**
- **In-Service Date – 2nd Quarter 2018**

- Key Stakeholders
 - Property Owners & Tenants
 - Businesses
 - Local Officials
 - State Officials

- Communication Tactics
 - Briefings, Presentations
 - Phone calls
 - E-Mail Updates

- General Public:
 - Transmission Hotline 1-800-793-2202
 - Email TransmissionInfo@eversource.com



For municipal officials:

Marcia Wellman

Transmission Project Outreach

860-728-4547

marcia.wellman@eversource.com

For the public:

Transmission Hotline 1-800-793-2202

Email: TransmissionInfo@eversource.com

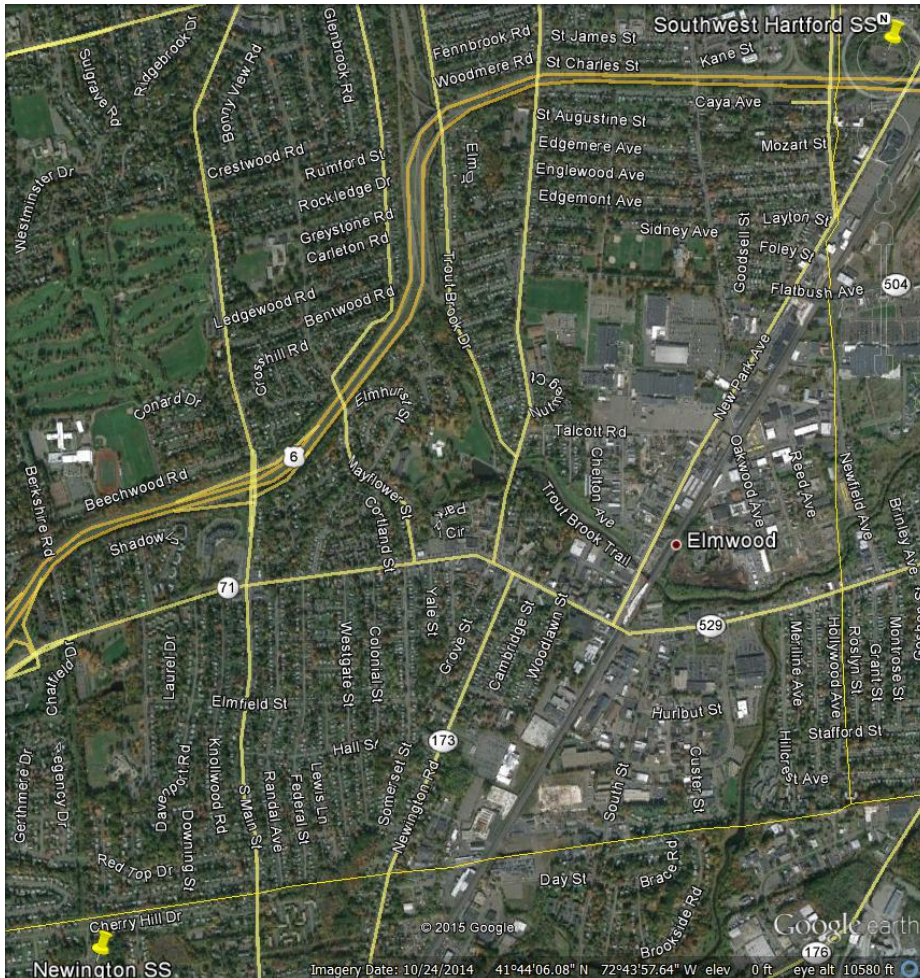
Greater Hartford/Central CT Reliability Project

Town of Newington Briefing
October 2, 2015

- Project Need
- Project Overview
- Route Option Summary
- What We are Proposing to Build
- Route Variations
- Proposed Substation Upgrades
- Typical Underground Construction
- Siting Process
- Project Timeline
- Stakeholder Outreach
- Contact Information



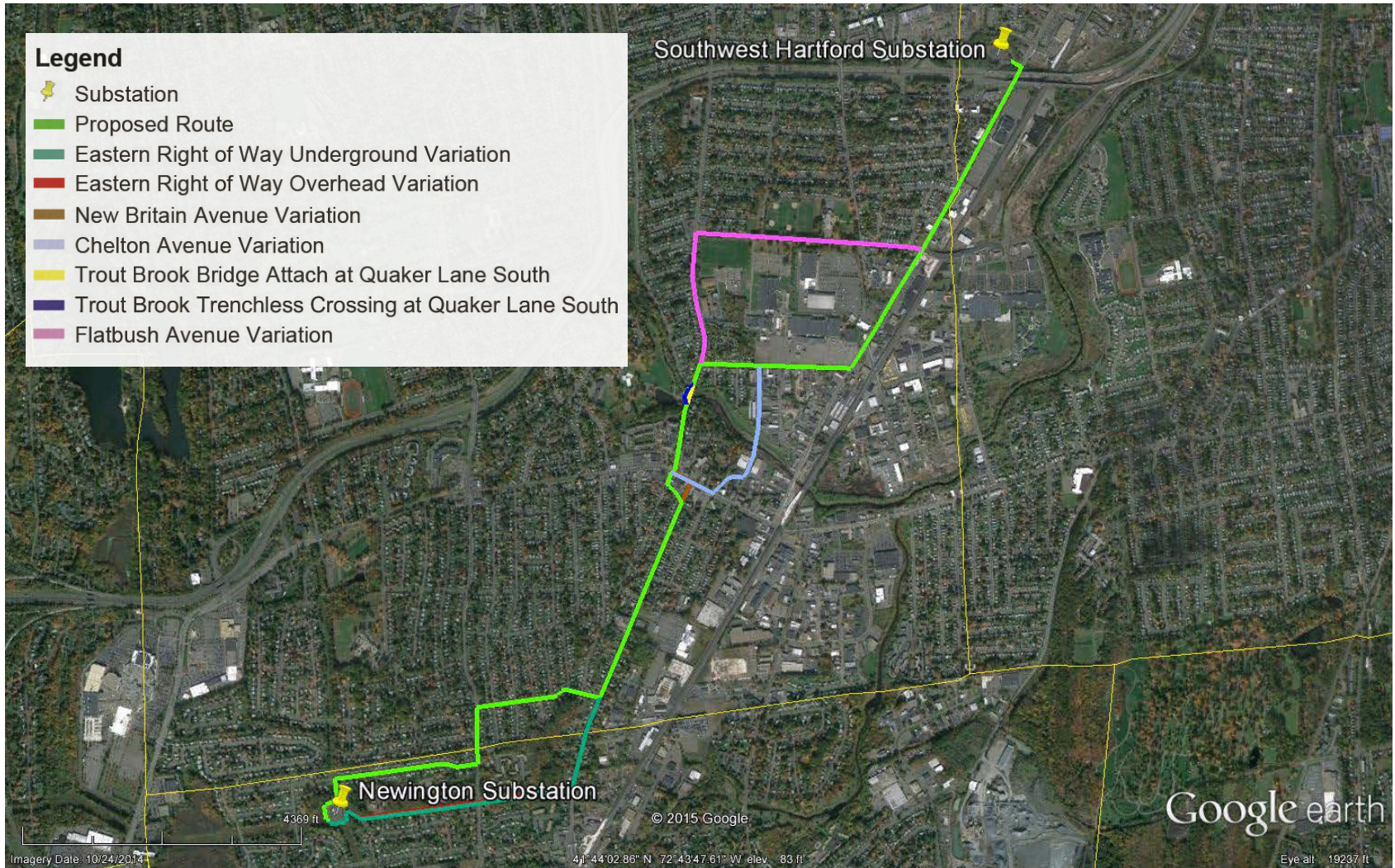
- Eversource works continually with the Independent System Operator of New England (ISO-NE) to study the electrical transmission system.
- Recent Eversource and ISO-NE studies identified a number of system reliability constraints in the Greater Hartford area.

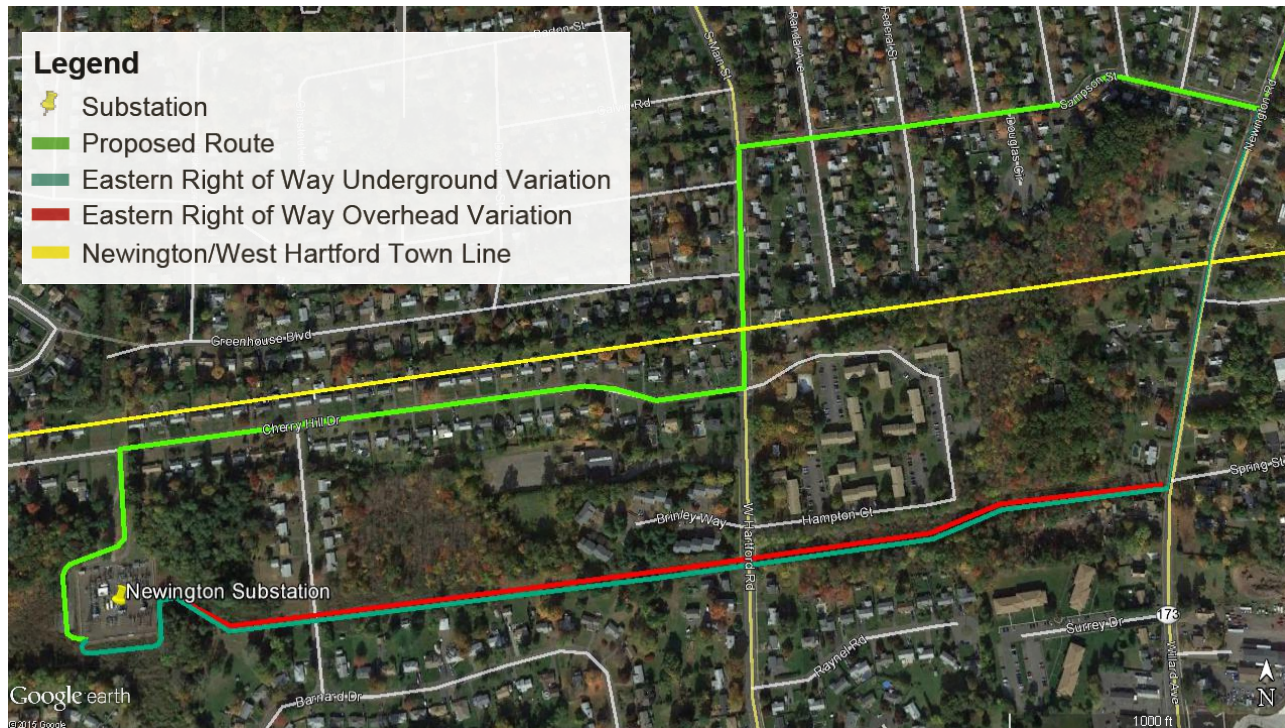


The proposed Project will:

- Install a new underground 115-kV transmission line between Newington Substation (185 Cherry Hill Drive, Newington) and Southwest Hartford Substation (271 New Park Avenue, Hartford).
- Upgrade existing substations in Newington, Hartford and Berlin

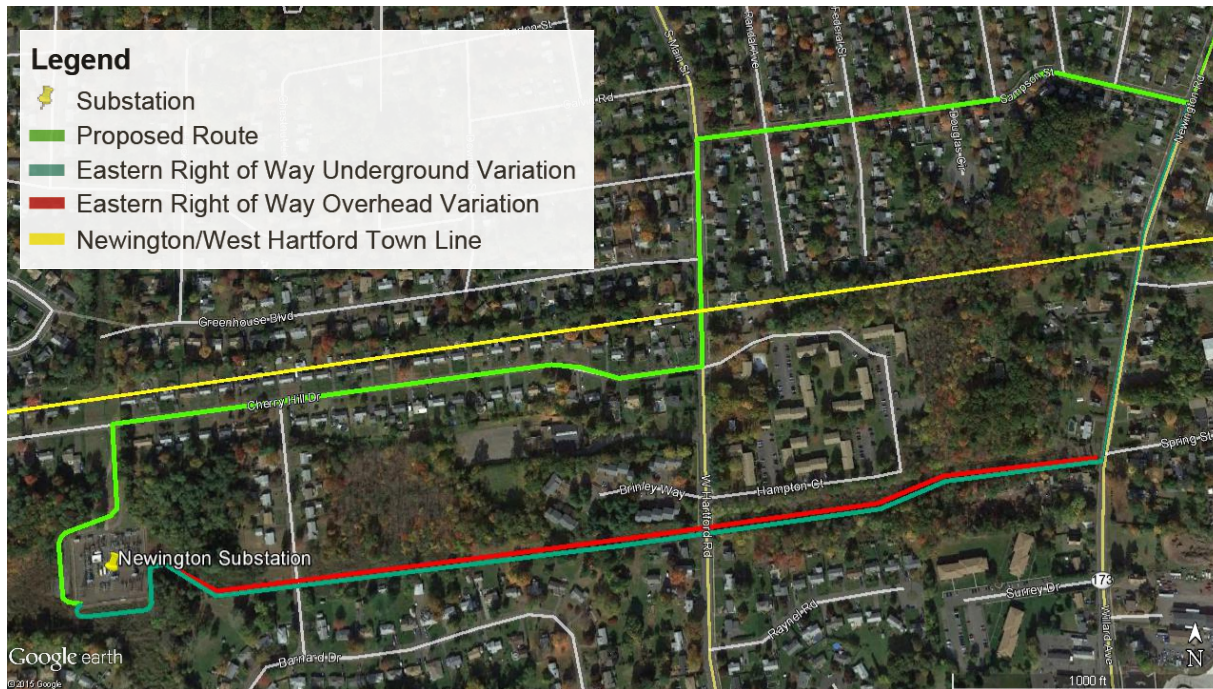
Greater Hartford/Central CT Reliability Project Route Option Summary





Proposed Route ———

- Approximately 0.5 miles of 115-kV underground transmission line in Newington
 - Route starts at the Newington Substation then follows Cherry Hill Drive going east
 - Route turns left onto West Hartford Road then continues along South Main Street in West Hartford
 - The remaining 3.2 miles of the route to Southwest Hartford Substation is located along city streets in West Hartford and Hartford



Eastern Right of Way Underground Variation ————

- Approximately 0.4 miles of 115-kV underground transmission line in Newington
 - Route starts at the Newington Substation going east on existing distribution Right of Way, crossing West Hartford Road, turning left onto Rte. 173/Newington Road and continuing into West Hartford.

Eastern Right of Way Overhead Variation ————

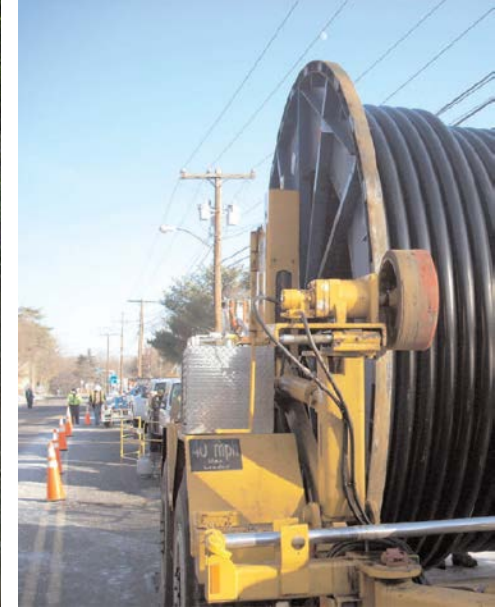
- Approximately 0.4 miles of 115-kV overhead transmission line in Newington
 - Route starts at the Newington Substation going east on existing distribution Right of Way, crossing West Hartford Road, ending at Rte. 173/Newington Road, where it transitions to underground along city streets

Proposed Substation Upgrades

- Install two new 115-kV breakers and a new 115-kV underground line terminal structure at Newington Substation
- 1783 Line connection to Newington Substation to be shifted to the south side of the station
 - Transmission line structure modifications, removal and replacement are required
 - Work requires expansion of Newington Substation fence line to the south and west
 - Substation expansion to the south will require a retaining wall



Typical Underground Construction





First Step:

Eversource seeks stakeholder input as part of its Municipal Consultation Process

- ▶ Eversource submits its Municipal Consultation Filing (MCF) to the municipalities.
- ▶ As part of the MCF process, Eversource seeks municipal and public input. Written comments received are provided to the Connecticut Siting Council (CSC).
- ▶ Eversource will host an Open House to provide officials and residents the opportunity to learn more about the proposed project.

Second Step:

Eversource files its siting application with the CSC

- ▶ The CSC conducts a local public hearing and evidentiary hearings.
- ▶ The public, municipal officials and other interested stakeholders are given the opportunity to participate in the local public comment hearing.

Third Step:

The CSC Issues its Decision

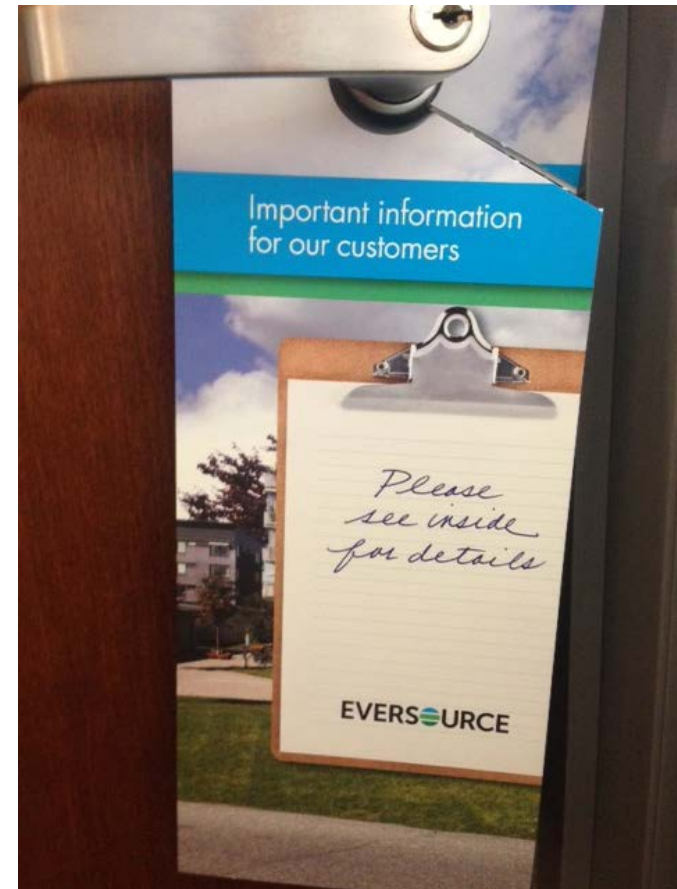
- ▶ If approved, Eversource develops construction plans, called Development and Management Plans (D&M). The D&M process traditionally offers additional opportunity for public input.

- **Initial Outreach to municipal officials – March 2015 - Complete**
- **Engage municipal engineers and DPW staff – March 2015 - Complete**
- **Brief Municipalities on proposed route – 3rd Quarter 2015 - Complete**
- **Submit Municipal Consultation Filing to Municipalities – 4th Quarter 2015**
- **Submit Application to the CT Siting Council – 1st Quarter 2016**
- **CSC Decision & Order – 1st Quarter 2017**
- **Pending CSC approval, submit the Development & Management Plan D&M – 1st Quarter 2017**
- **Begin Construction – 2nd or 3rd Quarter 2017**
- **In-Service Date – 2nd Quarter 2018**

- Key Stakeholders
 - Property Owners & Tenants
 - Businesses
 - Local Officials
 - State Officials

- Communication Tactics
 - Briefings, Presentations
 - Phone calls
 - E-Mail Updates

- General Public:
 - Transmission Hotline 1-800-793-2202
 - Email TransmissionInfo@eversource.com



For municipal officials:

Marcia Wellman

Transmission Project Outreach

860-728-4547

marcia.wellman@eversource.com

For the public:

Transmission Hotline 1-800-793-2202

Email: TransmissionInfo@eversource.com

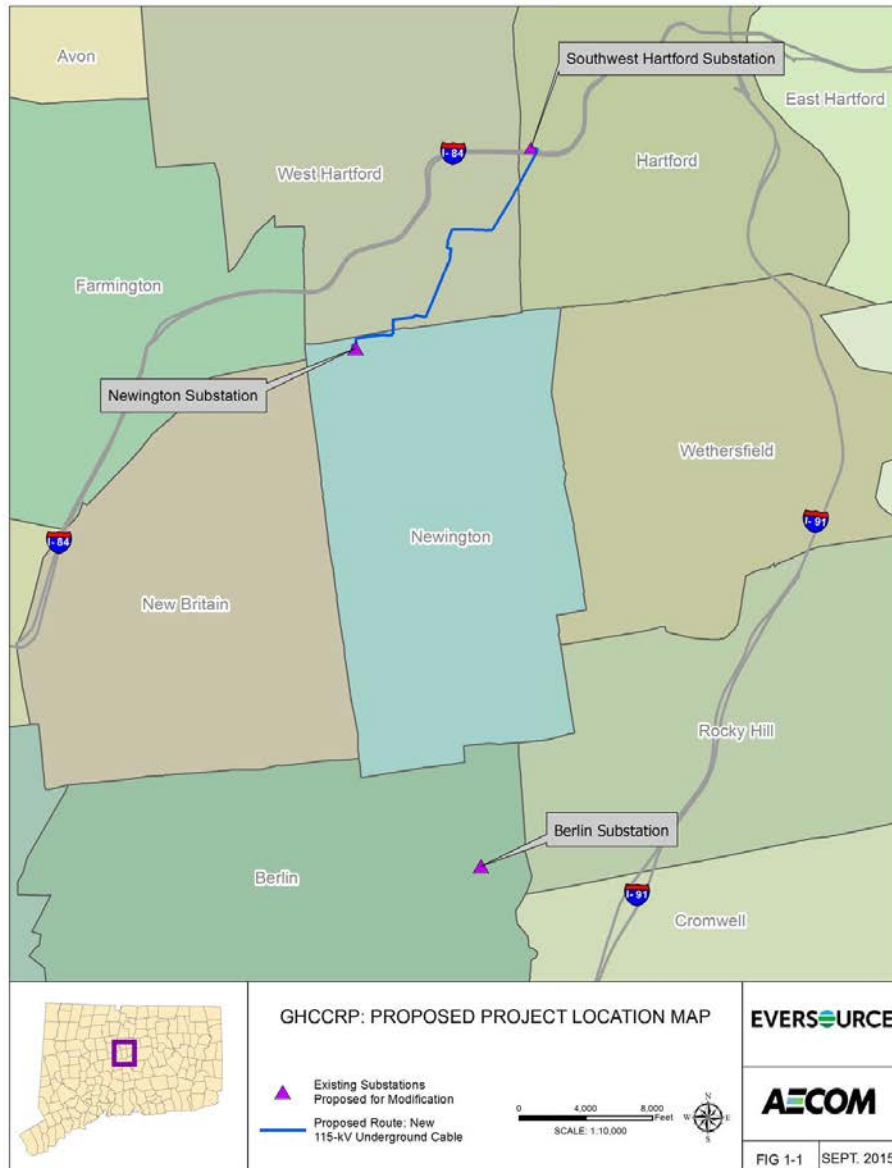
Greater Hartford/Central CT Reliability Project Overview

Town of Berlin Briefing
November 16, 2015

- Project Need
- Project Overview
- Proposed Substation Upgrades
- Siting Process
- Project Timeline
- Stakeholder Outreach
- Contact Information

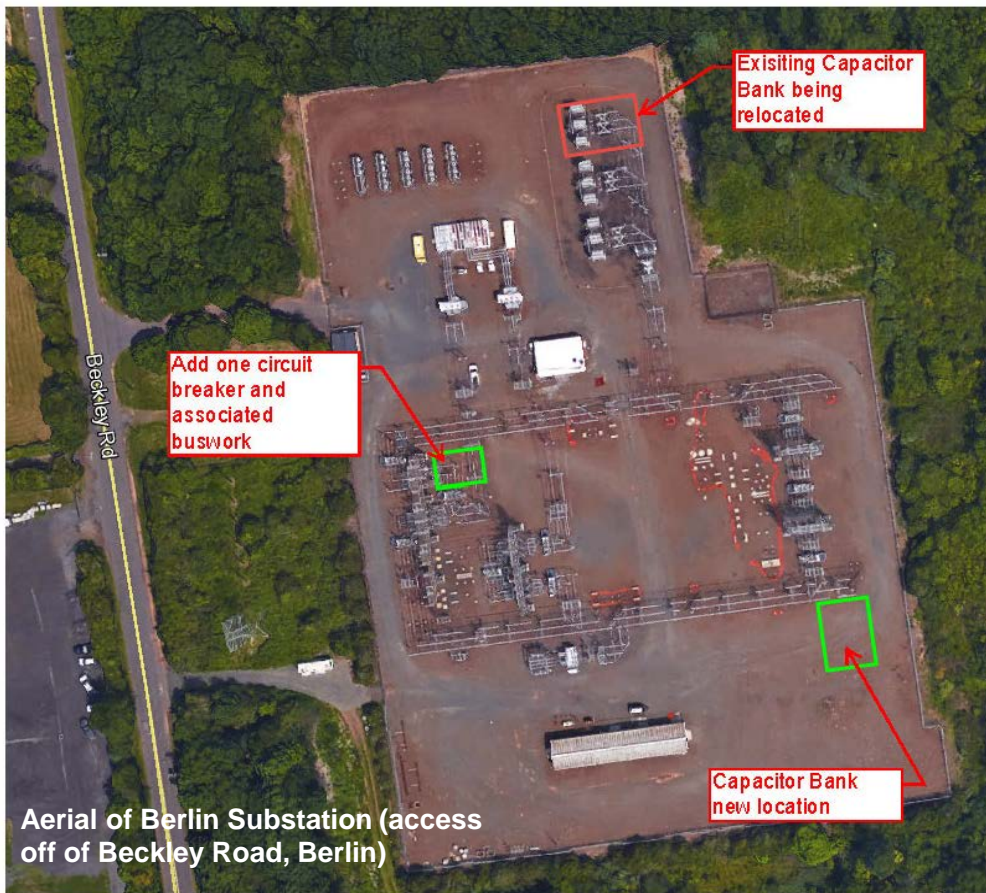


- Eversource works continually with the Independent System Operator of New England (ISO-NE) to study the electrical transmission system.
- Recent Eversource and ISO-NE studies identified a number of system reliability constraints in the Greater Hartford area.



The proposed Project would:

- Install a new underground 115-kV transmission line between Newington Substation (185 Cherry Hill Drive, Newington) and the Southwest Hartford Substation (271 New Park Avenue, Hartford).
- Upgrade existing substations in Newington, Hartford and Berlin.



Proposed Substation Upgrade

- Install new equipment and reconfigure existing equipment.
- No expansion of the fence line is required.



First Step:

Eversource seeks stakeholder input as part of its Municipal Consultation Process

- ▶ Eversource submits its Municipal Consultation Filing (MCF) to the municipalities.
- ▶ As part of the MCF process, Eversource seeks municipal and public input. Written comments received are provided to the Connecticut Siting Council (CSC).
- ▶ Eversource will host an Open House to provide officials and residents the opportunity to learn more about the proposed project.

Second Step:

Eversource files its siting application with the CSC

- ▶ The CSC conducts a local public hearing and evidentiary hearings.
- ▶ The public, municipal officials and other interested stakeholders are given the opportunity to participate in the local public comment hearing.

Third Step:

The CSC Issues its Decision

- ▶ If approved, Eversource develops construction plans, called Development and Management Plans (D&M). The D&M process traditionally offers additional opportunity for community input.

- **Initial Outreach to municipal officials – March 2015 - Complete**
- **Engage municipal engineers and DPW staff – March 2015 - Complete**
- **Brief Municipalities on proposed route – 3rd Quarter 2015 - Complete**
- **Submit Municipal Consultation Filing to Municipalities – 4th Quarter 2015**
- **Submit Application to the CT Siting Council – 1st Quarter 2016**
- **CSC Decision & Order – 1st Quarter 2017**
- **Pending CSC approval, submit the Development & Management Plan D&M – 2nd Quarter 2017**
- **Begin Construction – 3rd Quarter 2017**
- **In-Service Date – 2nd Quarter 2018**

- Key Stakeholders
 - Property Owners & Tenants
 - Businesses
 - Local Officials
 - State Officials

- Communication Tactics
 - Briefings, Presentations
 - Phone calls
 - E-Mail Updates

- General Public:
 - **Transmission Hotline 1-800-793-2202**
 - **Email TransmissionInfo@eversource.com**



For municipal officials:

Marcia Wellman

Transmission Project Outreach

860-728-4547

marcia.wellman@eversource.com

For the public:

Transmission Hotline 1-800-793-2202

Email: TransmissionInfo@eversource.com

Greater Hartford - Central Connecticut Reliability Project

Meeting with the Town of West Hartford

December 9, 2015

- Project Need
- Project Overview
- Proposed Route in the MCF
- Route Variations
- Additional Routes Considered
- Siting Process
- Project Timeline
- Stakeholder Outreach
- Opportunities for Public Comment
- Contact Information

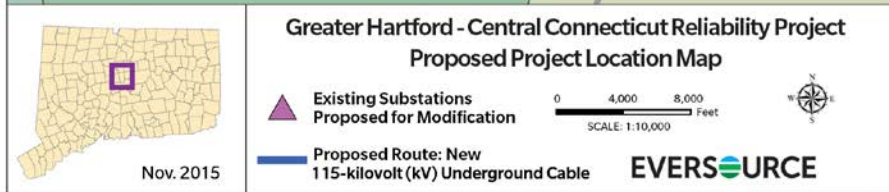


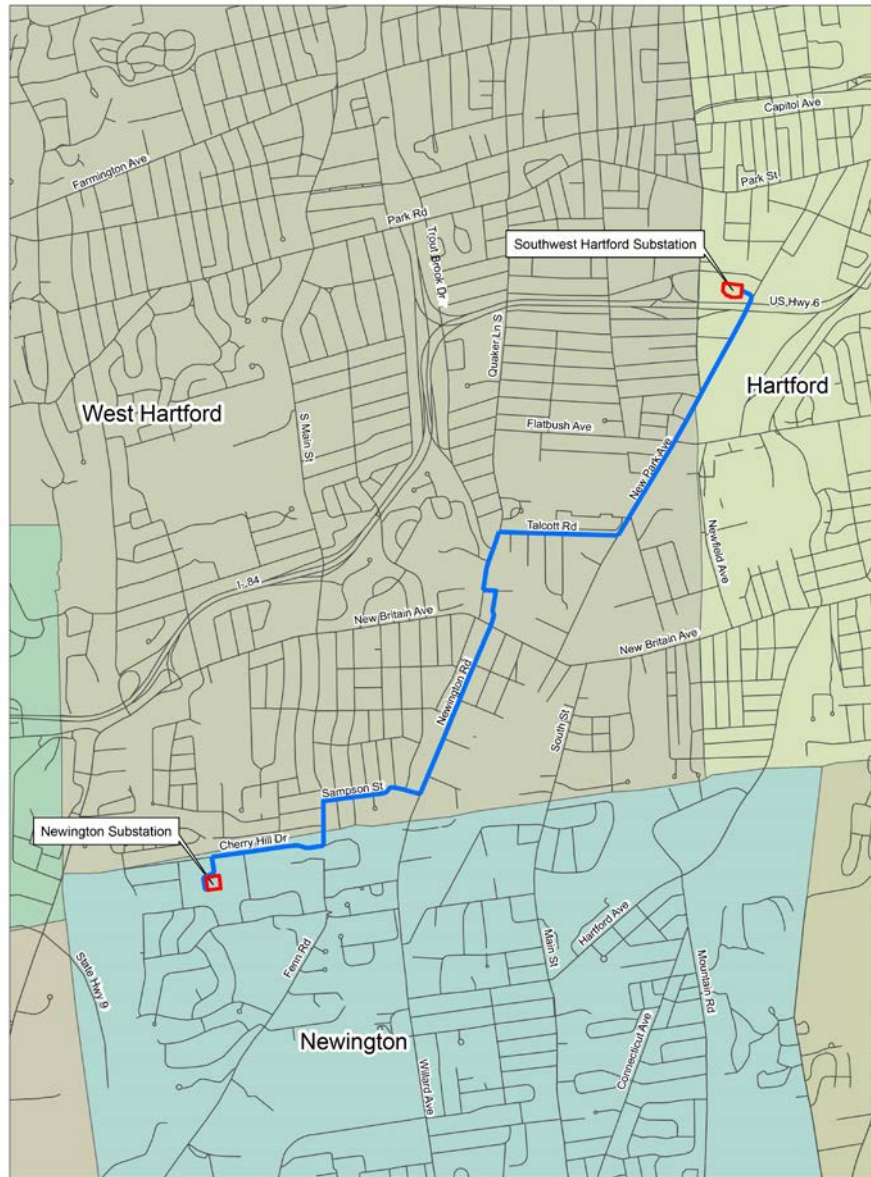
- The Greater Hartford – Central Connecticut Reliability Project is the product of years of careful study of the reliability needs in the Greater Hartford and Central Connecticut area.
- The Project will address violations of reliability criteria (thermal and voltage violations) identified in the study, and will assist Eversource in maintaining the reliability of the Connecticut transmission system in accordance with mandatory federal and regional standards and criteria.
- The Project is part of Eversource's ongoing commitment to provide reliable, cost-effective, and environmentally sound improvements to the regional electric transmission system.



The proposed Project would:

- Install a new underground 115-kV transmission line between Newington Substation (185 Cherry Hill Drive, Newington) and the Southwest Hartford Substation (271 New Park Avenue, Hartford).
- Upgrade existing substations in Newington, Hartford and Berlin.





Proposed Route in the Municipal Consultation Filing:

- Approximately 2.6 miles of 115-kV underground transmission line in West Hartford
 - Route follows South Main street from Newington into West Hartford, turning right onto Sampson Street.
 - Route turns North on Rte. 173/Newington Road, crossing New Britain Avenue, continuing through the parking lot of Elmwood Community Center*. The route then turns left onto Burgoyne Street for 0.05 miles.
 - The Route turns right onto South Quaker Lane heading north to Beachland Park.
 - Then utilizing park land, Eversource would perform a short open cut installation to cross Trout Brook.
 - After crossing Trout Brook, the Route then continues down South Quaker Lane turning right onto Talcott Road.
 - The Route then turns northerly onto New Park Avenue for approximately 0.6 miles before crossing into Hartford, ultimately turning left into the Southwest Hartford Substation.

*Route changed to accommodate a request from the Town of West Hartford.



Eastern Right of Way Variation ———

- Approximately 0.1 miles
 - Route enters West Hartford on Rte. 173/Newington Road.

Grove Street Variation ———

- Approximately 0.52 miles
 - Route turns left onto Elmfield Street then right onto Grove Street before crossing New Britain Avenue, and onto South Quaker Lane.

Grove Street Connection Variation ———

- Approximately 0.22 miles
 - Route cuts behind Jerry's Artarama and The Fernwood, continuing from Grove Street, crossing New Britain Avenue and onto South Quaker Lane.

South Quaker Lane Connection Variation ———

- Approximately 0.16 miles
 - Route turns left onto New Britain Avenue before turning right onto South Quaker Lane.

Chelton Avenue Variation ———

- Approximately 0.54 miles
 - Starting at the Newington Road/New Britain Avenue intersection going southeast on New Britain Avenue, turning left behind Sheehan-Hilborn-Breen Funeral Home.
 - Route continues back through commercial property, Eversource would then perform a trenchless crossing of Trout Brook before reaching Chelton Avenue.
 - Route continues north on Chelton Avenue before turning right onto Talcott Road.



New Park Avenue Variation

- Approximately 0.73 miles
 - Route turns right onto New Britain Avenue before turning left onto New Park Avenue.

Flatbush Avenue Variation

- Approximately 1.08 miles
 - After crossing Trout Brook, the Route continues down South Quaker Lane before turning right onto Flatbush Avenue.

Northern Variation

- Approximately 1.55 miles
 - From Flatbush Avenue, the route turns northerly onto Price Boulevard before turning right onto St. Augustine Street.
 - The route then crosses Oakwood Avenue and continues down Westphal Street.
 - The route then turns right onto Prospect Avenue, before continuing on Merrill street.

- Elmwood Community Center
- Connecticut Fastrak
- East of Connecticut Fastrak
- Town of Newington's request to use Greenhouse Boulevard in the Town of West Hartford



First Step:

Eversource seeks stakeholder input as part of its Municipal Consultation Process

- ▶ Eversource submits its Municipal Consultation Filing (MCF) to the municipalities.
- ▶ As part of the MCF process, Eversource seeks municipal and public input. Written comments received are provided to the Connecticut Siting Council (CSC).
- ▶ Eversource will host an Open House to provide officials and residents the opportunity to learn more about the proposed project.

Second Step:

Eversource files its siting application with the CSC

- ▶ The CSC conducts a local public hearing and evidentiary hearings.
- ▶ The public, municipal officials and other interested stakeholders are given the opportunity to participate in the local public comment hearing.

Third Step:

The CSC Issues its Decision

- ▶ If approved, Eversource develops construction plans, called Development and Management Plans (D&M). The D&M process traditionally offers additional opportunity for public input.

Project Timeline

	3rd Q 2015	4th Q 2015	1st Q 2016	2nd Q 2016	3rd Q 2016	4th Q 2016	1st Q 2017	2nd Q 2017	3rd Q 2017	...4th Q 2018
Discussions with Town	Completed									
Municipal Consultation Filing										
Application to CT Siting Council (CSC)										
CSC Review*										
CSC Decision*										
Development & Management (D&M) Plan**										
Construction**										
Project Outreach										

*Subject to Change

**Pending Approval

Project In Service: 2018

- Letter to be mailed to all abutting property owners along the preferred route and the variations on or about December 18th.
- Project website to go live on or about December 18th.
- Presentation to the Town Council Community Planning Committee – December 21
- Invitations to the Open House to be mailed in early January.
- Targeted stakeholder briefings ahead of the Open House.
- Open House on January 20, Elmwood Community Center

- Letter to abutting property owners will provide the 1-800 phone number, an email address, and instructions for accessing the Project website.
- Comment cards will be available at the Open House – all written comments will be filed with the CT Siting Council as part of the record when we file our application.
- Once we file the Application the CT Siting Council will conduct a local public hearing in which municipal officials, residents, and businesses can speak directly to the Council. A transcript of the session is developed and made part of the record in the Docket.

For municipal officials:

Marcia Wellman

Transmission Project Outreach

860.728.4547

marcia.wellman@eversource.com

For the public:

Transmission Hotline 1-800-793-2202

Email: TransmissionInfo@eversource.com

Greater Hartford - Central Connecticut Reliability Project

Meeting with the Town of West Hartford
Community Planning & Physical Services Committee
December 15, 2015

- Project Need
- Project Overview
- Proposed Route in the MCF
- Route Variations
- Additional Routes Considered
- Siting Process
- Project Timeline
- Stakeholder Outreach
- Opportunities for Public Comment
- Contact Information

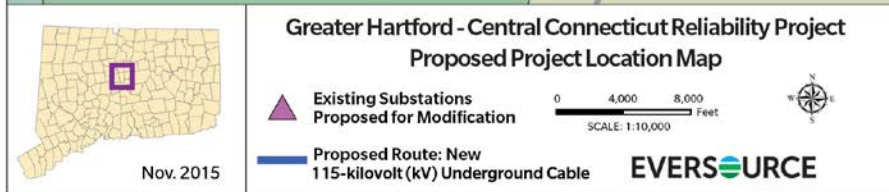


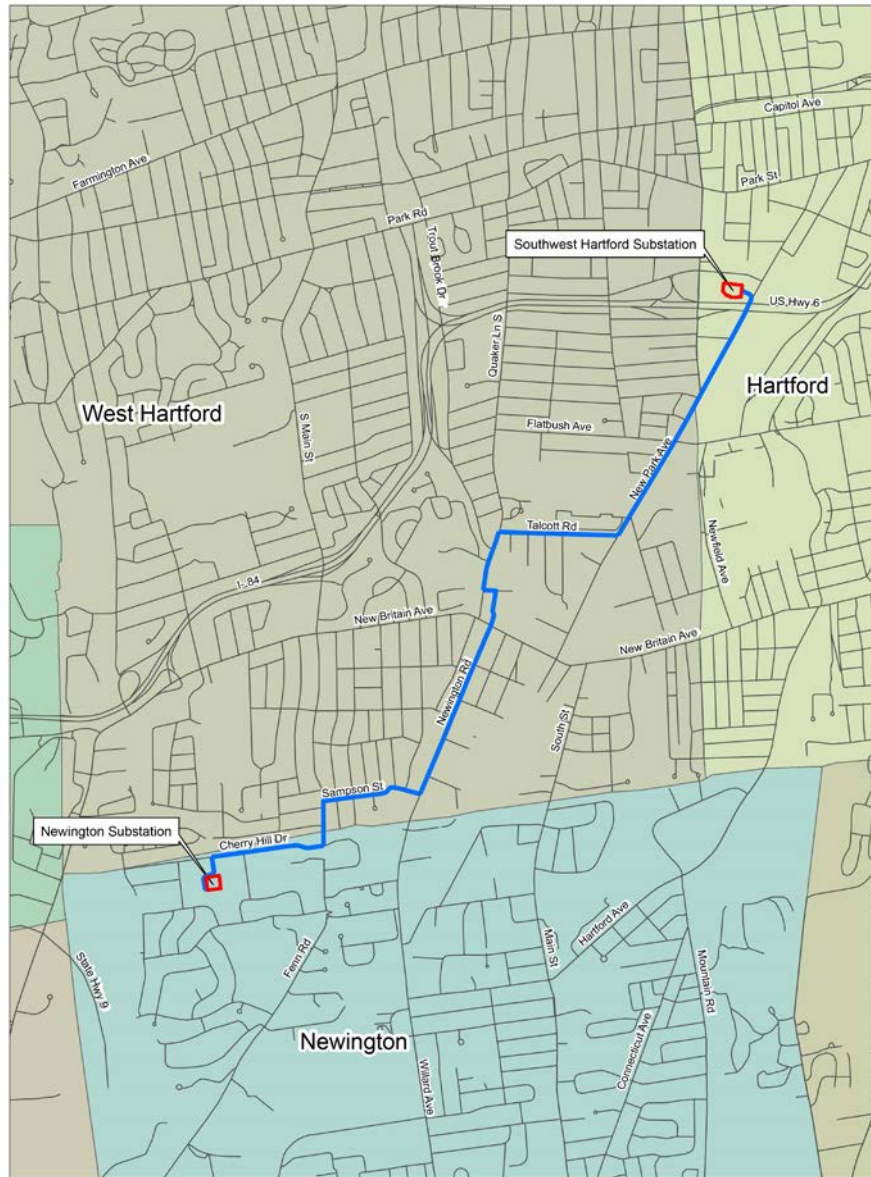
- The Greater Hartford – Central Connecticut Reliability Project is the product of years of careful study of the reliability needs in the Greater Hartford and Central Connecticut area.
- The Project will address violations of reliability criteria (thermal and voltage violations) identified in the study, and will assist Eversource in maintaining the reliability of the Connecticut transmission system in accordance with mandatory federal and regional standards and criteria.
- The Project is part of Eversource's ongoing commitment to provide reliable, cost-effective, and environmentally sound improvements to the regional electric transmission system.



The proposed Project would:

- Install a new underground 115-kV transmission line between Newington Substation (185 Cherry Hill Drive, Newington) and the Southwest Hartford Substation (271 New Park Avenue, Hartford).
- Upgrade existing substations in Newington, Hartford and Berlin.





Proposed Route in the Municipal Consultation Filing:

- Approximately 2.6 miles of 115-kV underground transmission line in West Hartford
 - Route follows South Main street from Newington into West Hartford, turning right onto Sampson Street.
 - Route turns North on Rte. 173/Newington Road, crossing New Britain Avenue, continuing through the parking lot of Elmwood Community Center*. The route then turns left onto Burgoyne Street for 0.05 miles.
 - The Route turns right onto South Quaker Lane heading north to Beachland Park.
 - Then utilizing park land, Eversource would perform a short open cut installation to cross Trout Brook.
 - After crossing Trout Brook, the Route then continues down South Quaker Lane turning right onto Talcott Road.
 - The Route then turns northerly onto New Park Avenue for approximately 0.6 miles before crossing into Hartford, ultimately turning left into the Southwest Hartford Substation.

*Route changed to accommodate a request from the Town of West Hartford.



East Right of Way Variation —————

- Approximately 0.1 miles
 - Route enters West Hartford on Rte. 173/Newington Road.

Grove Street Variation —————

- Approximately 0.52 miles
 - Route turns left onto Elmfield Street then right onto Grove Street before crossing New Britain Avenue, and onto South Quaker Lane.

Grove Street Connection Variation —————

- Approximately 0.22 miles
 - Route cuts behind Jerry's Artarama and The Fernwood, continuing from Grove Street, crossing New Britain Avenue and onto South Quaker Lane.

South Quaker Lane Connection Variation —————

- Approximately 0.16 miles
 - Route turns left onto New Britain Avenue before turning right onto South Quaker Lane.

Chelton Avenue Variation —————

- Approximately 0.54 miles
 - Starting at the Newington Road/New Britain Avenue intersection going southeast on New Britain Avenue, turning left behind Sheehan-Hilborn-Breen Funeral Home.
 - Route continues back through commercial property, Eversource would then perform a trenchless crossing of Trout Brook before reaching Chelton Avenue.
 - Route continues north on Chelton Avenue before turning right onto Talcott Road.



New Park Avenue Variation

- Approximately 0.73 miles
 - Route turns right onto New Britain Avenue before turning left onto New Park Avenue.

Flatbush Avenue Variation

- Approximately 1.08 miles
 - After crossing Trout Brook, the Route continues down South Quaker Lane before turning right onto Flatbush Avenue.

Northern Variation

- Approximately 1.55 miles
 - From Flatbush Avenue, the route turns northerly onto Price Boulevard before turning right onto St. Augustine Street.
 - The route then crosses Oakwood Avenue and continues down Westphal Street.
 - The route then turns right onto Prospect Avenue, before continuing on Merrill street.

- Elmwood Community Center
- Connecticut Fastrak
- East of Connecticut Fastrak
- Town of Newington's request to use Greenhouse Boulevard in the Town of West Hartford



First Step:

Eversource seeks stakeholder input as part of its Municipal Consultation Process

- ▶ Eversource submits its Municipal Consultation Filing (MCF) to the municipalities.
- ▶ As part of the MCF process, Eversource seeks municipal and public input. Written comments received are provided to the Connecticut Siting Council (CSC).
- ▶ Eversource will host an Open House to provide officials and residents the opportunity to learn more about the proposed project.

Second Step:

Eversource files its siting application with the CSC

- ▶ The CSC conducts a local public hearing and evidentiary hearings.
- ▶ The public, municipal officials and other interested stakeholders are given the opportunity to participate in the local public comment hearing.

Third Step:

The CSC Issues its Decision

- ▶ If approved, Eversource develops construction plans, called Development and Management Plans (D&M). The D&M process traditionally offers additional opportunity for public input.

Project Timeline

	3rd Q 2015	4th Q 2015	1st Q 2016	2nd Q 2016	3rd Q 2016	4th Q 2016	1st Q 2017	2nd Q 2017	3rd Q 2017	...4th Q 2018
Discussions with Town	Completed									
Municipal Consultation Filing										
Application to CT Siting Council (CSC)										
CSC Review*										
CSC Decision*										
Development & Management (D&M) Plan**										
Construction**										
Project Outreach										

*Subject to Change

**Pending Approval

Project In Service: 2018

- Letter to be mailed to all abutting property owners along the preferred route and the variations on or about December 18th.
- Project website to go live on or about December 18th.
- Presentation to the Town Council Community Planning Committee – December 21
- Invitations to the Open House to be mailed in early January.
- Targeted stakeholder briefings ahead of the Open House.
- Open House on January 20, Elmwood Community Center

- Letter to abutting property owners will provide the 1-800 phone number, an email address, and instructions for accessing the Project website.
- Comment cards will be available at the Open House – all written comments will be filed with the CT Siting Council as part of the record when we file our application.
- Once we file the Application the CT Siting Council will conduct a local public hearing in which municipal officials, residents, and businesses can speak directly to the Council. A transcript of the session is developed and made part of the record in the Docket.

For municipal officials:

Marcia Wellman

Transmission Project Outreach

860.728.4547

marcia.wellman@eversource.com

For the public:

Transmission Hotline 1-800-793-2202

Email: TransmissionInfo@eversource.com

Greater Hartford/Central CT Reliability Project

Town of West Hartford Briefing
March 15, 2017

- Project Need
- Project Update
- New Proposed Route utilizing Amtrak right-of-way
- Proposed Substation Upgrades
- Siting Process
- Project Timeline
- Stakeholder Outreach
- Contact Information

- Eversource works continually with the Independent System Operator of New England (ISO-NE) to study the electrical transmission system.
- Recent Eversource and ISO-NE studies identified a number of system reliability constraints in the Greater Hartford area.

- As we have previously discussed, Eversource is proposing to install a new 115-kV transmission line between Newington Substation (185 Cherry Hill Drive, Newington) and Southwest Hartford Substation (271 New Park Avenue, Hartford) with related upgrades at both substations.
- After submitting the Municipal Consultation Filing (MCF) to West Hartford, Newington, and Hartford,, Eversource held a regional Open House on January 20, 2016 to solicit community feedback on the Project.
- While going through the Municipal Consultation process Eversource was continuing discussions with Amtrak. As a result of those discussions, Eversource will be proposing a new 3.5-mile hybrid overhead and underground route between the Newington and Southwest Hartford Substations. The new line would be located within Eversource's existing transmission and distribution line rights of-way, under town streets, and along the existing Amtrak rights-of-way.
- Additional Outreach is scheduled to begin regarding this new proposed route, including hosting an Open House in Newington in April 2017 prior to filing the Application with the Connecticut Siting Council (CSC) in May 2017.

Preferred Project Route

Greater Hartford - Central Connecticut Reliability Project

Proposed Project Route Map



The proposed route would extend approximately 3.5 miles between the Newington Substation on Cherry Hill Drive, Newington, and the Southwest Hartford Substation on New Park Avenue, Hartford.

The line would exit the Newington Substation underground heading east on Eversource's existing right-of-way, crossing Avery Road and West Hartford Road in Newington; the line would turn north under Willard Avenue, and then turn east under Shepard Drive.

The line would transition to overhead at the Amtrak right-of-way, and continue north on for approximately 2.3 miles, then transition back to underground, crossing under New Park Avenue, into the Southwest Hartford Substation.



First Step:

Eversource seeks stakeholder input as part of its Municipal Consultation Process

- ▶ Eversource submits its Municipal Consultation Filing (MCF) to the municipalities.
- ▶ As part of the MCF process, Eversource seeks municipal and public input. Written comments received are provided to the Connecticut Siting Council (CSC).
- ▶ Eversource will host an Open House to provide officials and residents the opportunity to learn more about the proposed project.

Second Step:

Eversource will be placing a new bill insert in customers April and May bills explaining the new preferred route

Eversource files its siting application with the CSC

- ▶ The CSC conducts a local public hearing and evidentiary hearings.
- ▶ The public, municipal officials and other interested stakeholders are given the opportunity to participate in the local public comment hearing.

Third Step:

The CSC Issues its Decision

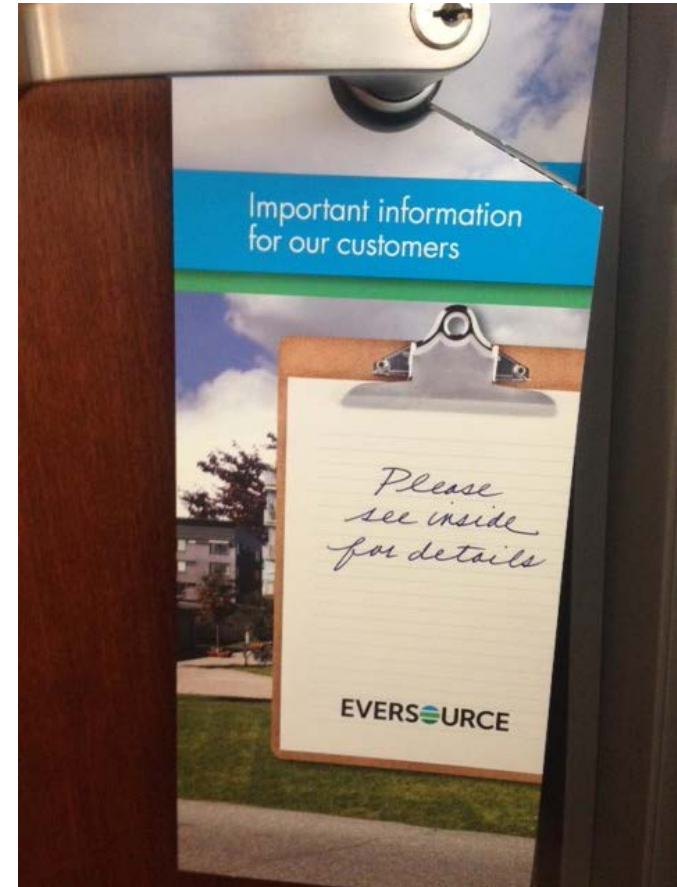
- ▶ If approved, Eversource develops construction plans, called Development and Management Plans (D&M). The D&M process traditionally offers additional opportunity for public input.

- **Initial Outreach to municipal officials – March 2015 - Complete**
- **Engage municipal engineers and DPW staff – March 2015 - Complete**
- **Brief Municipalities on proposed route – 3rd Quarter 2015 - Complete**
- **Submit Municipal Consultation Filing to Municipalities – 4th Quarter 2015 – Complete**
- **Brief municipalities on revised proposed route – March 2017**
- **Submit new bill insert to customer in their monthly billing statement – April 2017 and May 2017**
- **Host Open House in Newington to provide information on new proposed route – April 2017**
- **Submit Application to the CT Siting Council – May 2017**
- **CSC Decision & Order – Q2 2018**
- **Pending CSC approval, submit the Development & Management Plan D&M – Q2-Q3 2018**
- **Begin Construction – Q3 2018**
- **In-Service Date –2019**

- Key Stakeholders
 - Property Owners & Tenants
 - Businesses
 - Local Officials
 - State Officials

- Communication Tactics
 - Briefings, Presentations
 - Phone calls
 - E-Mail Updates

- General Public:
 - Transmission Hotline 1-800-793-2202
 - Email TransmissionInfo@eversource.com



For municipal officials:

Patrice Tyrie

Siting & Construction Services

860-218-7523 (mobile)

860-728-4634 (office)

patrice.tyrie@eversource.com

For the public:

Transmission Hotline 1-800-793-2202

Email: TransmissionInfo@eversource.com

Greater Hartford/Central CT Reliability Project Update

Town of Newington Briefing
March 22, 2017

- Project Need
- Project Update
- New Proposed Route utilizing Amtrak right-of-way
- Proposed Substation Upgrades
- Siting Process
- Project Timeline
- Stakeholder Outreach
- Contact Information



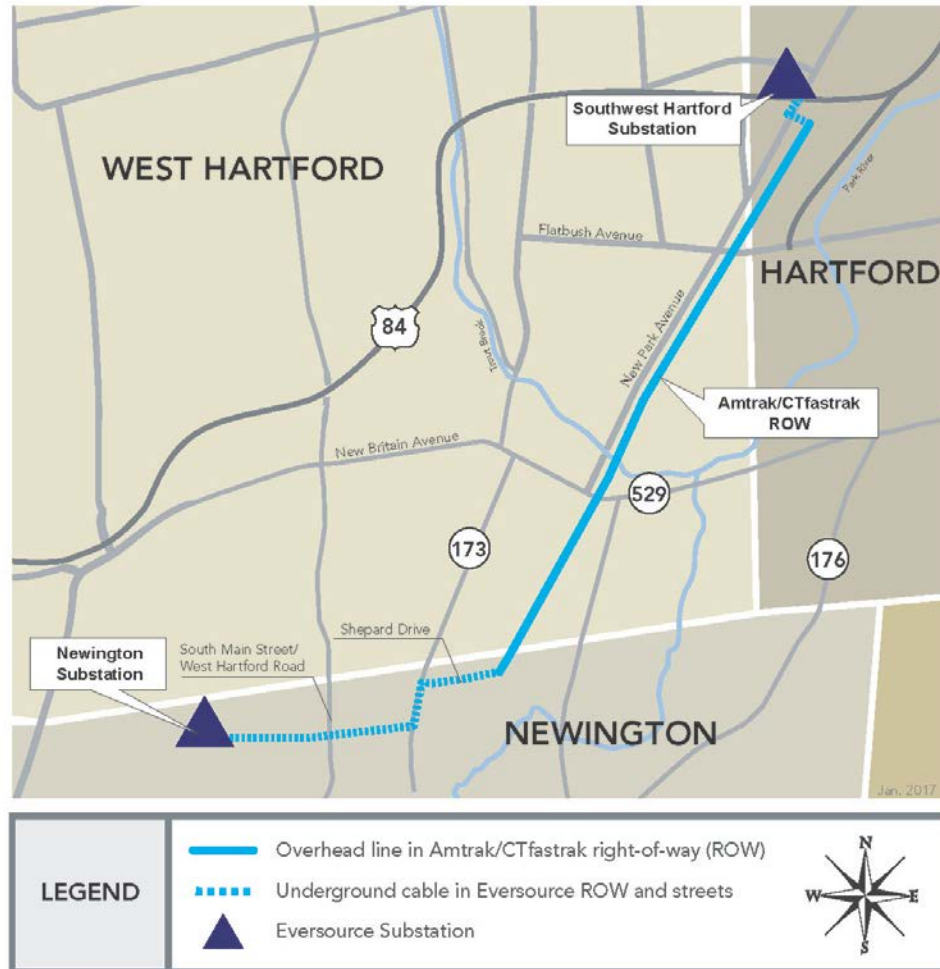
- Eversource works continually with the Independent System Operator of New England (ISO-NE) to study the electrical transmission system.
- Recent Eversource and ISO-NE studies identified a number of system reliability constraints in the Greater Hartford area.

- As we have previously discussed, Eversource is proposing to install a new 115-kV transmission line between Newington Substation (185 Cherry Hill Drive, Newington) and Southwest Hartford Substation (271 New Park Avenue, Hartford) with related upgrades at both substations.
- After submitting the Municipal Consultation Filing (MCF) to West Hartford, Newington, and Hartford, Eversource held a regional Open House on January 20, 2016 to solicit community feedback on the Project.
- While going through the Municipal Consultation process Eversource was continuing discussions with Amtrak. As a result of those discussions, Eversource will be proposing a new 3.5-mile hybrid overhead and underground route between the Newington and Southwest Hartford Substations. The new line would be located within Eversource's existing transmission and distribution line rights of-way, under town streets, and along the existing Amtrak rights-of-way.
- Additional Outreach is scheduled to begin regarding this new proposed route, including hosting an Open House in Newington in April 2017 prior to filing the Application with the Connecticut Siting Council (CSC) in May 2017.

Proposed Project Route

Greater Hartford - Central Connecticut Reliability Project

Proposed Project Route Map



The proposed route would extend approximately 3.5 miles between the Newington Substation on Cherry Hill Drive, Newington, and the Southwest Hartford Substation on New Park Avenue, Hartford.

The line would exit the Newington Substation underground heading east on Eversource's existing right-of-way, crossing Avery Road and West Hartford Road in Newington; the line would turn north under Willard Avenue, and then turn east under Shepard Drive.

The line would transition to overhead at the Amtrak right-of-way, and continue north on for approximately 2.3 miles, then transition back to underground, crossing under New Park Avenue, into the Southwest Hartford Substation.

Proposed Substation Upgrades

- Install new equipment at Newington Substation
 - Transmission line structure modifications
 - Work requires expansion of Newington Substation fence line to the south and west
 - Substation expansion to the south will require a retaining wall



Aerial of Newington Substation (access off of Cherry Hill Drive, Newington)



Proposed expansion for GHCC Project

Ongoing substation distribution expansion



First Step:

Eversource seeks stakeholder input as part of its Municipal Consultation Process

- ▶ Eversource submits its Municipal Consultation Filing (MCF) to the municipalities.
- ▶ As part of the MCF process, Eversource seeks municipal and public input. Written comments received are provided to the Connecticut Siting Council (CSC).
- ▶ Eversource will host an Open House to provide officials and residents the opportunity to learn more about the proposed project.

Second Step:

Eversource will be placing a new bill insert in customers April and May bills explaining the new preferred route

Eversource files its siting application with the CSC

- ▶ The CSC conducts a local public hearing and evidentiary hearings.
- ▶ The public, municipal officials and other interested stakeholders are given the opportunity to participate in the local public comment hearing.

Third Step:

The CSC Issues its Decision

- ▶ If approved, Eversource develops construction plans, called Development and Management Plans (D&M). The D&M process traditionally offers additional opportunity for public input.

- **Initial Outreach to municipal officials – March 2015 - Complete**
- **Engage municipal engineers and DPW staff – March 2015 - Complete**
- **Brief Municipalities on proposed route – 3rd Quarter 2015 - Complete**
- **Submit Municipal Consultation Filing to Municipalities – 4th Quarter 2015 – Complete**
- **Brief municipalities on revised proposed route – March 2017**
- **Submit new bill insert to customer in their monthly billing statement – April 2017 and May 2017**
- **Host Open House in Newington to provide information on new proposed route – April 2017**
- **Submit Application to the CT Siting Council – May 2017**
- **CSC Decision & Order – Q2 2018**
- **Pending CSC approval, submit the Development & Management Plan D&M – Q2-Q3 2018**
- **Begin Construction – Q3 2018**
- **In-Service Date –2019**

- Key Stakeholders
 - Property Owners & Tenants
 - Businesses
 - Local Officials
 - State Officials

- Communication Tactics
 - Briefings, Presentations
 - Phone calls
 - E-Mail Updates

- General Public:
 - Transmission Hotline 1-800-793-2202
 - Email TransmissionInfo@eversource.com



For municipal officials:

Patrice Tyrie

Siting & Construction Services

860-218-7523

patrice.tyrie@eversource.com

For the public:

Transmission Hotline 1-800-793-2202

Email: TransmissionInfo@eversource.com

Exhibit A

Presentations to the Key Stakeholders

Greater Hartford - Central Connecticut Reliability Project

Meeting with the Elmwood Business Association
January 8, 2016

- Project Need
- Project Overview
- Proposed Route in the MCF
- Route Variations
- Additional Routes Considered
- Siting Process
- Project Timeline
- Opportunities for Public Comment
- Contact Information

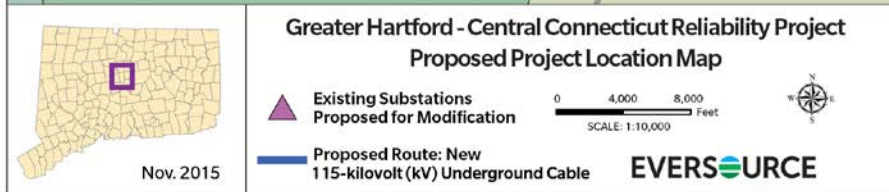


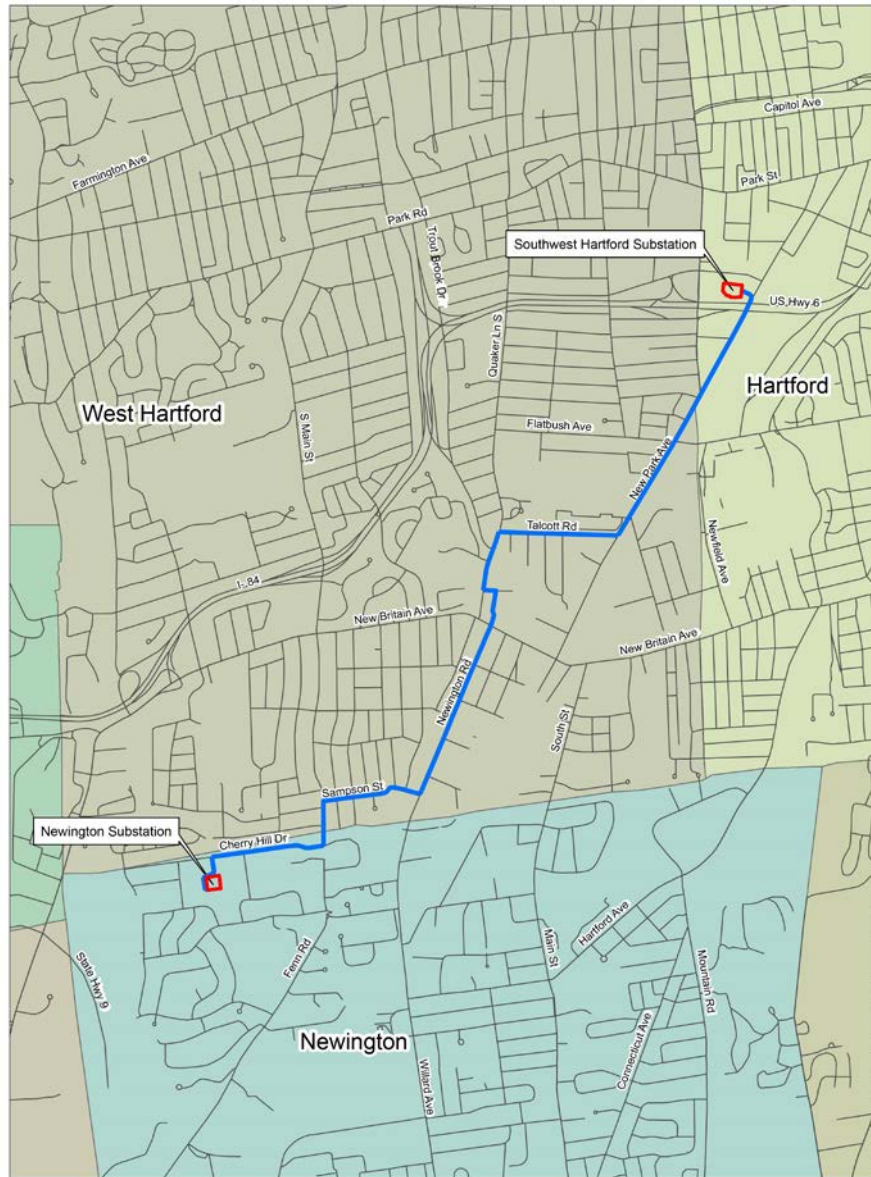
- The Greater Hartford – Central Connecticut Reliability Project is the product of years of careful study of the reliability needs in the Greater Hartford and Central Connecticut area.
- The Project will address violations of reliability criteria (thermal and voltage violations) identified in the study, and will assist Eversource in maintaining the reliability of the Connecticut transmission system in accordance with mandatory federal and regional standards and criteria.
- The Project is part of Eversource's ongoing commitment to provide reliable, cost-effective, and environmentally sound improvements to the regional electric transmission system.



The proposed Project would:

- Install a new underground 115-kV transmission line between Newington Substation (185 Cherry Hill Drive, Newington) and the Southwest Hartford Substation (271 New Park Avenue, Hartford).
- Upgrade existing substations in Newington, Hartford and Berlin.





Proposed Route in the Municipal Consultation Filing:

- Approximately 2.6 miles of 115-kV underground transmission line in West Hartford
 - Route follows South Main street from Newington into West Hartford, turning right onto Sampson Street.
 - Route turns North on Rte. 173/Newington Road, crossing New Britain Avenue, continuing through the parking lot of Elmwood Community Center*. The route then turns left onto Burgoyne Street for 0.05 miles.
 - The Route turns right onto South Quaker Lane heading north to Beachland Park.
 - Then utilizing park land, Eversource would perform a short open cut installation to cross Trout Brook.
 - After crossing Trout Brook, the Route then continues down South Quaker Lane turning right onto Talcott Road.
 - The Route then turns northerly onto New Park Avenue for approximately 0.6 miles before crossing into Hartford, ultimately turning left into the Southwest Hartford Substation.

*Route changed to accommodate a request from the Town of West Hartford.



East Right of Way Variation

- Approximately 0.1 miles
 - Route enters West Hartford on Rte. 173/Newington Road.

Grove Street Variation

- Approximately 0.52 miles
 - Route turns left onto Elmfield Street then right onto Grove Street before crossing New Britain Avenue, and onto South Quaker Lane.

Grove Street Connection Variation

- Approximately 0.22 miles
 - Route cuts behind Jerry's Artarama and The Fernwood, continuing from Grove Street, crossing New Britain Avenue and onto South Quaker Lane.

South Quaker Lane Connection Variation

- Approximately 0.16 miles
 - Route turns left onto New Britain Avenue before turning right onto South Quaker Lane.

Chelton Avenue Variation

- Approximately 0.54 miles
 - Starting at the Newington Road/New Britain Avenue intersection going southeast on New Britain Avenue, turning left behind Sheehan-Hilborn-Breen Funeral Home.
 - Route continues back through commercial property, Eversource would then perform a trenchless crossing of Trout Brook before reaching Chelton Avenue.
 - Route continues north on Chelton Avenue before turning right onto Talcott Road.



New Park Avenue Variation ———

- Approximately 0.73 miles
 - Route turns right onto New Britain Avenue before turning left onto New Park Avenue.

Flatbush Avenue Variation ———

- Approximately 1.08 miles
 - After crossing Trout Brook, the Route continues down South Quaker Lane before turning right onto Flatbush Avenue.

Northern Variation ———

- Approximately 1.55 miles
 - From Flatbush Avenue, the route turns northerly onto Price Boulevard before turning right onto St. Augustine Street.
 - The route then crosses Oakwood Avenue and continues down Westphal Street.
 - The route then turns right onto Prospect Avenue, before continuing on Merrill street.

- Connecticut Fastrak
- East of Connecticut Fastrak
- Town of Newington's request to use Greenhouse Boulevard in the Town of West Hartford



First Step:

Eversource seeks stakeholder input as part of its Municipal Consultation Process

- ▶ Eversource submits its Municipal Consultation Filing (MCF) to the municipalities. - **Completed**
- ▶ As part of the MCF process, Eversource seeks municipal and public input. Written comments received are provided to the Connecticut Siting Council (CSC).
- ▶ Eversource will host an Open House on January 20th to provide officials and residents the opportunity to learn more about the proposed project.

Second Step:

Eversource files its siting application with the CSC

- ▶ The CSC conducts a local public hearing and evidentiary hearings.
- ▶ The public, municipal officials and other interested stakeholders are given the opportunity to participate in the local public comment hearing.

Third Step:

The CSC Issues its Decision

- ▶ If approved, Eversource develops construction plans, called Development and Management Plans (D&M). The D&M process traditionally offers additional opportunity for public input.

Project Timeline

	3rd Q 2015	4th Q 2015	1st Q 2016	2nd Q 2016	3rd Q 2016	4th Q 2016	1st Q 2017	2nd Q 2017	3rd Q 2017	...4th Q 2018
Discussions with Town	Completed									
Municipal Consultation Filing										
Application to CT Siting Council (CSC)										
CSC Review*										
CSC Decision*										
Development & Management (D&M) Plan**										
Construction**										
Project Outreach										

*Subject to Change

**Pending Approval

Project In Service: 2018

- Letter to abutting property owners will provide the 1-800 phone number, an email address, and instructions for accessing the Project website.
- Comment cards will be available at the Open House – all written comments will be filed with the CT Siting Council as part of the record when we file our application.
- Once we file the Application the CT Siting Council will conduct a local public hearing in which municipal officials, residents, and businesses can speak directly to the Council. A transcript of the session is developed and made part of the record in the Docket.

For municipal officials:

Marcia Wellman

Transmission Project Outreach

860.728.4547

marcia.wellman@eversource.com

For the public:

Transmission Hotline 1-800-793-2202

Email: TransmissionInfo@eversource.com