



**PRELIMINARY HISTORIC
RESOURCES DETERMINATION**

February 3, 2017

**Verizon Wireless
99 East River Drive
East Hartford, CT 06108**

APT Project No.: CT1411540

**Re: Proposed Bridgeport NE Facility
541 Broadbridge Road
Bridgeport, Connecticut**

On behalf of Verizon Wireless, All-Points Technology Corporation, P.C. ("APT") performed an evaluation with respect to the proposed Facility's potential impacts on historic resources proximate to the referenced Site. The Site is occupied by an existing shopping plaza with a large paved parking area. The proposed Facility would include a 100-foot tall flagpole tower located within a 10-foot by 22-foot fenced gravel equipment compound, and surrounded by an 8-foot-tall chain-link fence with privacy slats. Antenna arrays, associated appurtenances and cabling would all be concealed within the interior of the monopole. Land use within the immediate vicinity consists of urban development, with the Connecticut Routes 8, 25 and 15 transportation corridors to the north and Broadbridge Road to the south.

The results of our independent review of sites listed, or eligible for listing, on the National Register of Historic Places ("NRHP") reveals that no such resources are located within one-half mile of the site.¹ As part of Verizon Wireless' due diligence for compliance with the National Environmental Policy Act ("NEPA"), APT is currently compiling applicable historic documentation for submission to the State Historic Preservation Office ("SHPO") for this agency's review and determination. The SHPO submission will be prepared by a qualified architectural historian that meets criteria developed by the Secretary of the Interior.

Based on our initial research, it is APT's opinion that the proposed Facility would have no effect on historic properties listed or eligible for listing on the NRHP. We anticipate that the CT SHPO will concur with this finding. A copy of the SHPO's response will be provided to the Siting Council upon receipt.

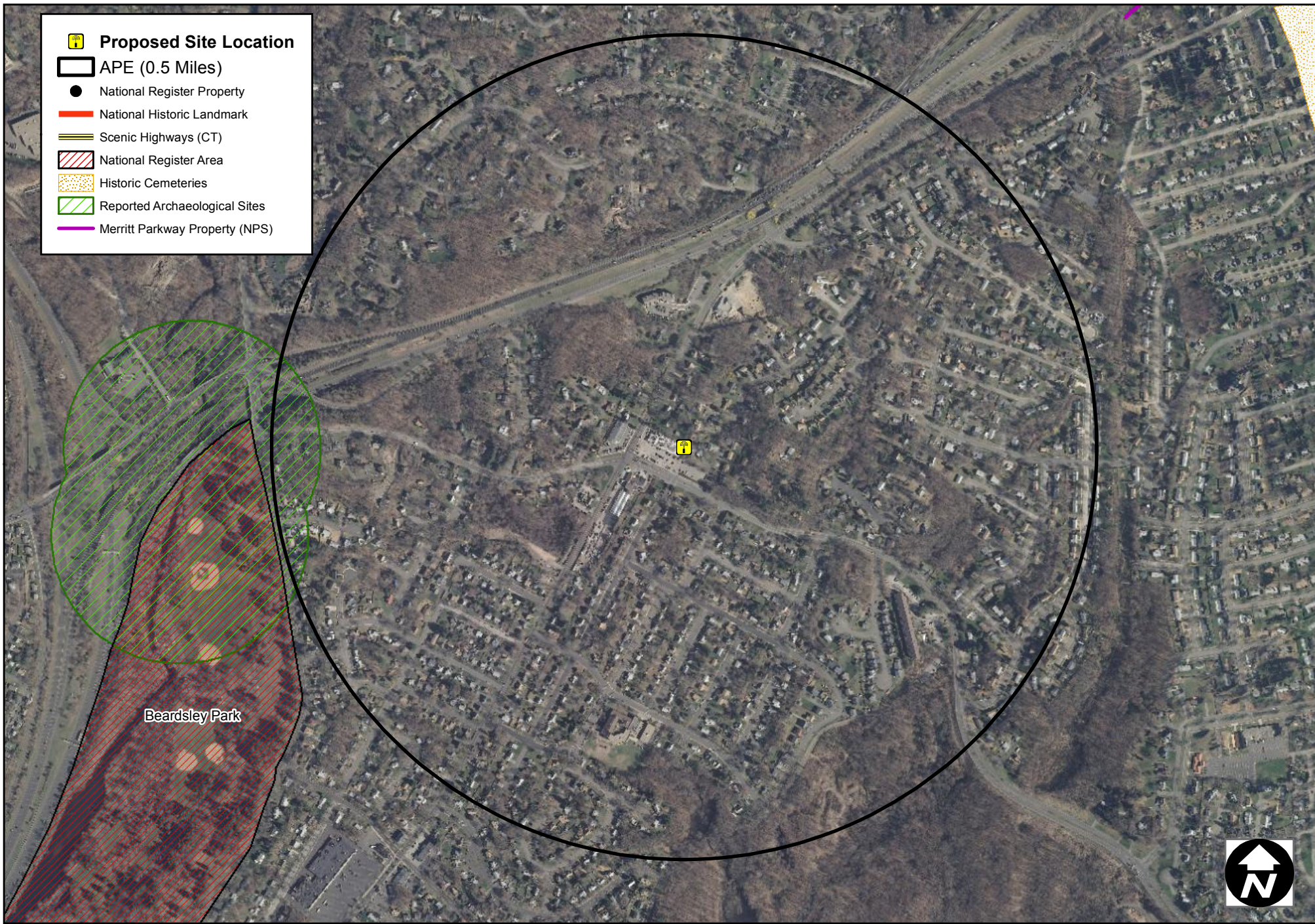
Sincerely,










A handwritten signature in cursive script that reads "Michael Libertine".

Michael Libertine,
Director of Siting and Permitting

¹ For towers under 200 feet tall, the Area of Potential Effect ("APE") has been established at 0.5 mile. This distance represents the APE established cooperatively by the Federal Communications Commission, Advisory Council on Historic Preservation and the National Conference of State Historic Preservation Officers.

Historic Resource Screening Map



-  **Proposed Site Location**
-  **APE (0.5 Miles)**
-  **National Register Property**
-  **National Historic Landmark**
-  **Scenic Highways (CT)**
-  **National Register Area**
-  **Historic Cemeteries**
-  **Reported Archaeological Sites**
-  **Merritt Parkway Property (NPS)**

Beardsley Park

