

STATE OF CONNECTICUT
CONNECTICUT SITING COUNCIL

IN RE: :
: :
APPLICATION OF CELLCO PARTNERSHIP : DOCKET NO. 471
D/B/A VERIZON WIRELESS FOR A :
CERTIFICATE OF ENVIRONMENTAL :
COMPATIBILITY AND PUBLIC NEED FOR :
THE CONSTRUCTION, MAINTENANCE :
AND OPERATION OF A WIRELESS :
TELECOMMUNICATIONS FACILITY AT :
208 KIRK ROAD (a/k/a 1075 PARADISE :
AVENUE) IN HAMDEN, CONNECTICUT : AUGUST 3, 2017

**RESPONSES OF CELLCO PARTNERSHIP D/B/A VERIZON WIRELESS
TO CONNECTICUT SITING COUNCIL PRE-HEARING QUESTIONS – SET 3**

On July 27, 2017, the Connecticut Siting Council (“Council”) issued Pre-Hearing Questions – Set 3 to Cellco Partnership d/b/a Verizon Wireless (“Cellco”), relating to Docket No. 471, Question Nos. 40 through 44. Below are Cellco’s responses.

Question No. 40

In regards to correspondence from Patricia Sorrentino of July 7, 2017, provide the following information regarding cluster mounts:

- a. How many antennas and remote radio units can be accommodated at each tower level using a cluster-mount design?
- b. If antennas attachments are limited at each tower level, explain any tower design modification necessary to achieve coverage objectives?
- c. Indicate whether the use of "cluster-mount" antennas would achieve Cellco' coverage objectives for the proposed site.
- d. Would the change in the design affect radio-frequency emissions from the site?

- e. Provide a photo-simulation of a cluster mount attachment on a tree tower and standard monopole.

Response

- a. If Cellco were required to utilize a cluster-mounted antenna configuration it would install six (6) antennas and six (6) remote radio heads (RRHs) (two (2) antennas and two (2) remote radio heads per sector) at the top antenna mounting level on the approved tower.
- b. No tower design modifications would be necessary to accommodate the cluster-mounted antenna configuration. Cellco would, however, need to utilize a new antenna and RRHs mounting system to accommodate the cluster-mount.
- c. At the Hamden 8 Facility location, Cellco could satisfy its wireless service objectives using a cluster-mounted antenna configuration.
- d. No. The facility's MPE levels would remain the same and comply with FCC standards in a cluster-mounted configuration.
- e. Photo-simulations showing the proposed antenna array and a cluster-mounted antenna array for Alternate Site 2 are included in Attachment 1.

Please note that while a cluster-mounted antenna configuration at the Hamden 8 Facility may work for Cellco, we don't know if it would work for other wireless carriers. A condition of approval requiring the use of cluster-mounted antennas could limit tower sharing at this site in the future.

Question No. 41

For proposed Site 2, can the compound fence be a stained wood fence?

Response

The proposed compound fence could be a wood structure and painted or stained any color. Cellco's preference however, would be to install a vinyl stockade fence to reduce or eliminate maintenance issues associated with a wood fence. A brown vinyl fence around the tower compound at any of the alternative tower locations would have the same screening benefits as a wood fence.

Question No. 42

For the access road extending from the cul-de-sac to all the proposed sites, can the access gate be composed of wood and located approximately 12 feet from the edge of the cul-de-sac?

Response

Yes.

Question No. 43

For the antenna attachments to a tree tower design, can the antennas, remote radio heads and mounting equipment be painted to match the tree tower?

Response

If the Council requires a tree tower design, the antennas, radio heads and mounting brackets would be painted brown or green to blend in with the tower design.

Question No. 44

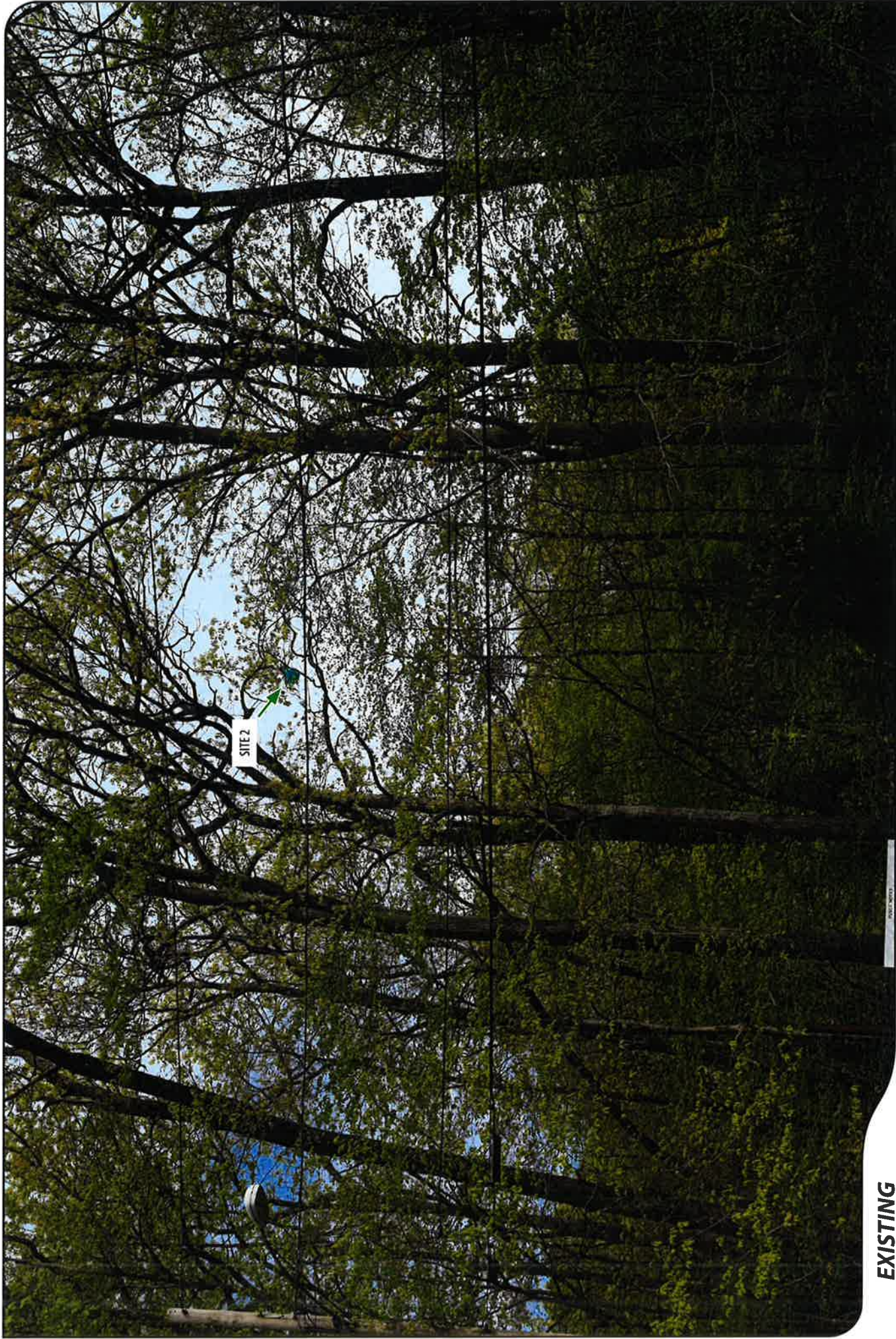
Is the Applicant willing to construct a tree-tower at Site 2? If so, provide a cost estimate for the tree tower design.

Response

Cellco would prefer to install a traditional monopole tower at the Alternate Site 2 location. As discussed at the June 13, 2017 hearing, Cellco does not believe that a tree tower

design at any of the alternative sites under consideration provides any significant benefit in terms of reducing the visual impact of the facility. The estimated cost of a 120-foot tree tower is approximately \$250,000, about three times the cost of a traditional monopole.

ATTACHMENT 1



EXISTING

PHOTO

1

LOCATION

COUNTRY CLUB DRIVE

ORIENTATION

NORTH

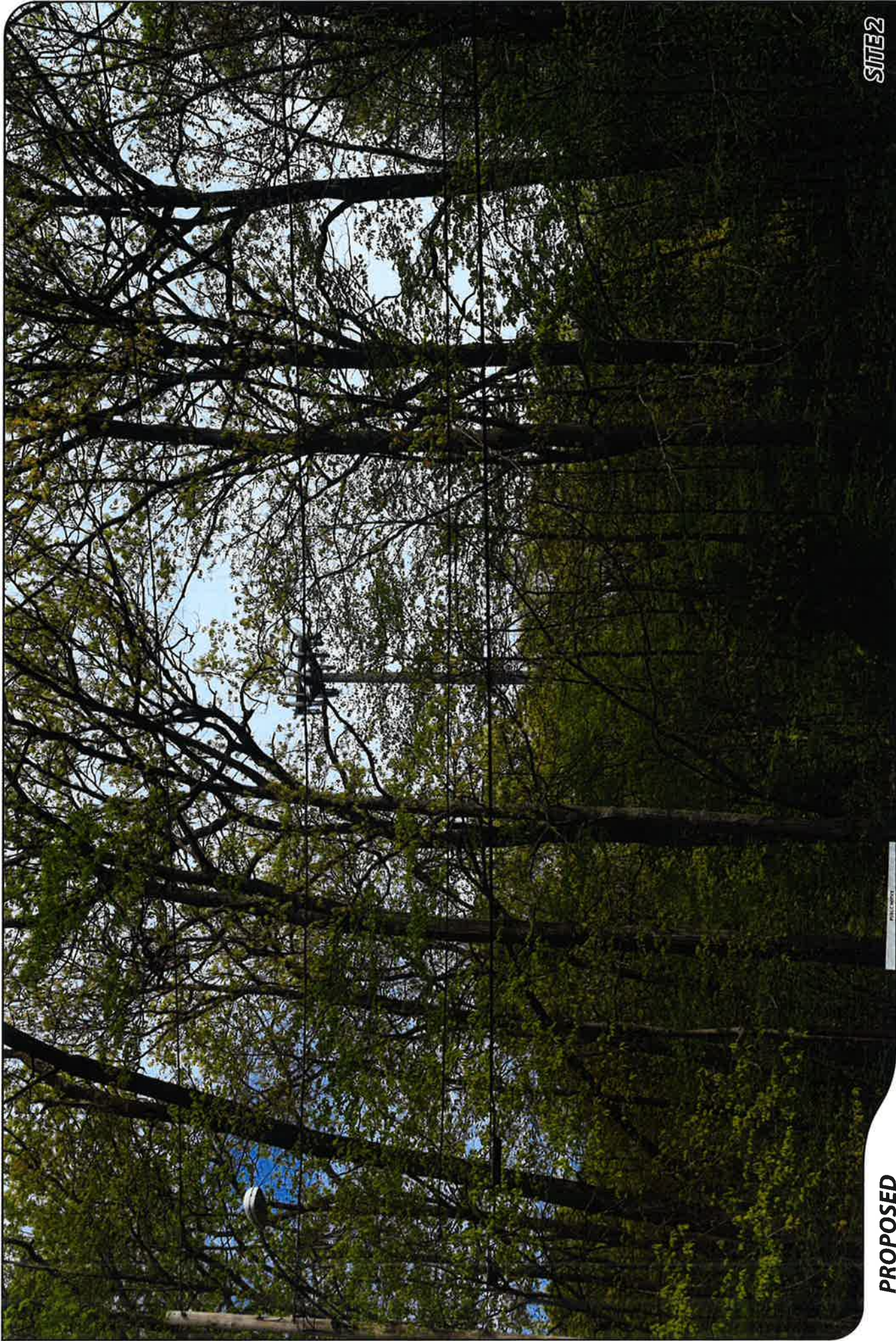
DISTANCE TO SITE 2

+/- 376 FEET



ALL-POINTS
TECHNOLOGY CORPORATION

verizon



PROPOSED

PHOTO

1

LOCATION

COUNTRY CLUB DRIVE

ORIENTATION

NORTH

DISTANCE TO SITE 2

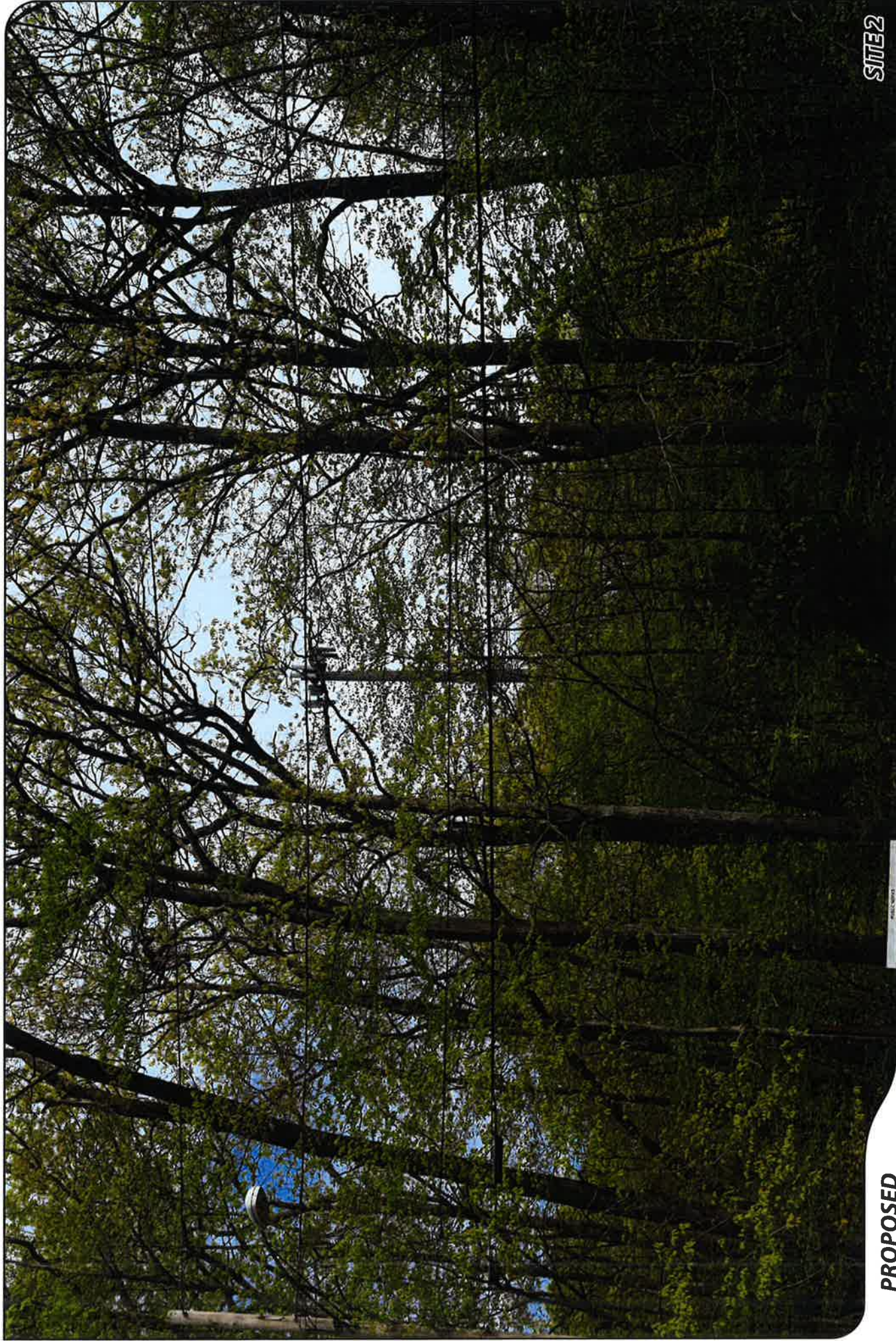
+/- 376 FEET

SITE 2



ALL-POINTS
TECHNOLOGY CORPORATION





SITE 2

PROPOSED

PHOTO

1

LOCATION

COUNTRY CLUB DRIVE

ORIENTATION

NORTH

DISTANCE TO SITE 2

+/- 376 FEET



ALL-POINTS
TECHNOLOGY CORPORATION

verizon

CERTIFICATION OF SERVICE

I hereby certify that on this 3rd day of August 2017, a copy of the foregoing was sent via electronic mail to the following:

Patricia Sorrentino
c/o Burt B. Cohen, Esq.
Bridget D'Angelo, Esq.
Murtha Cullina LLP
265 Church Street
P.O. Box 704
New Haven, CT 06503-0704
bcohen@murthalaw.com
bdangelo@murthalaw.com


Kenneth C. Baldwin