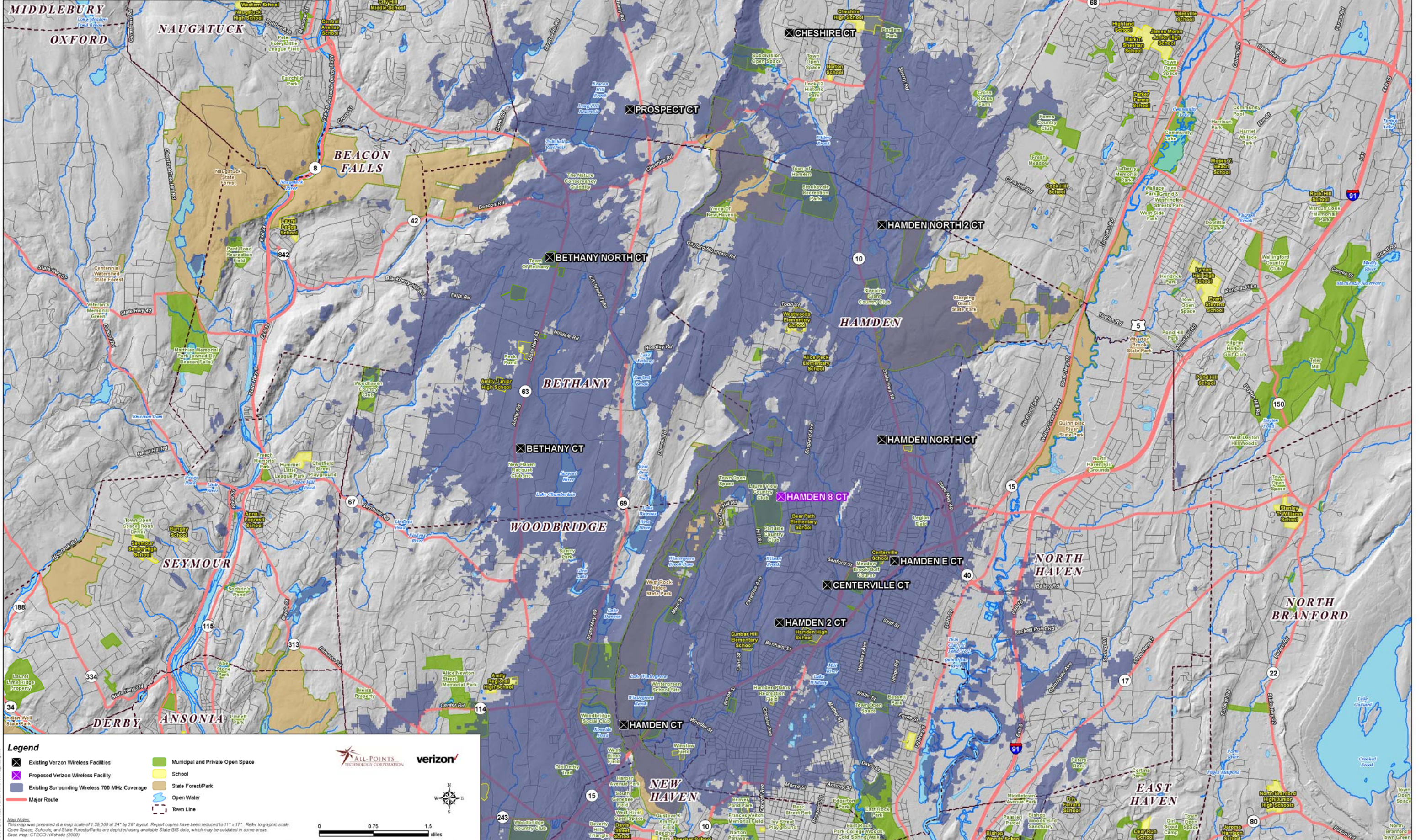


**Existing Verizon Wireless 700 MHz Coverage  
Hamden, Connecticut and Surrounding Area  
(\*Map Scale is 1:35,000)**

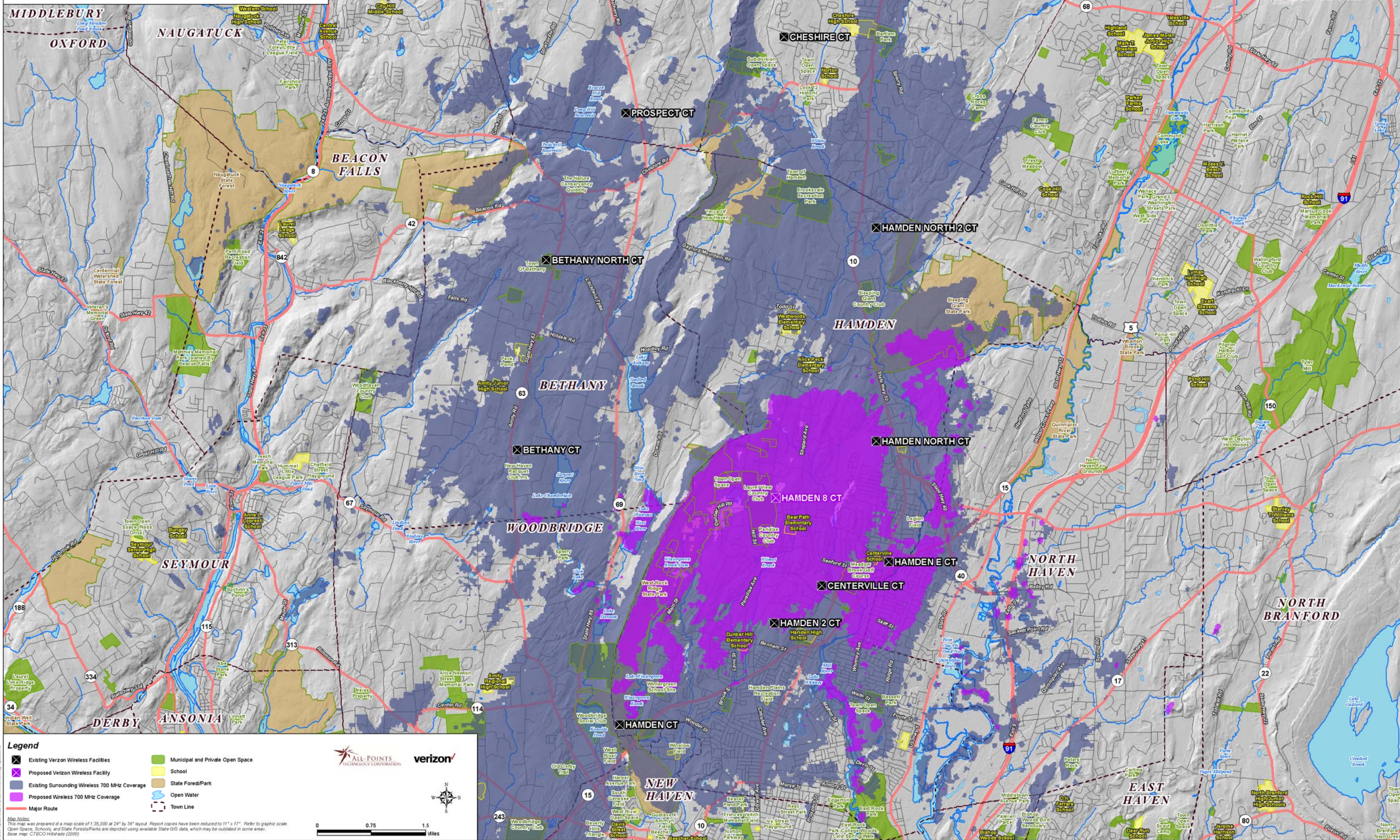
Coverage is depicted at a signal threshold of 120 dB Operational Path Loss



**Map Notes:**  
This map was prepared at a map scale of 1:35,000 at 24" by 36" layout. Report copies have been reduced to 11" x 17". Refer to graphic scale.  
Open Space, Schools, and State Forests/Parks are depicted using available State GIS data, which may be outdated in some areas.  
Base map: CT/ECO Hiltade (2000)

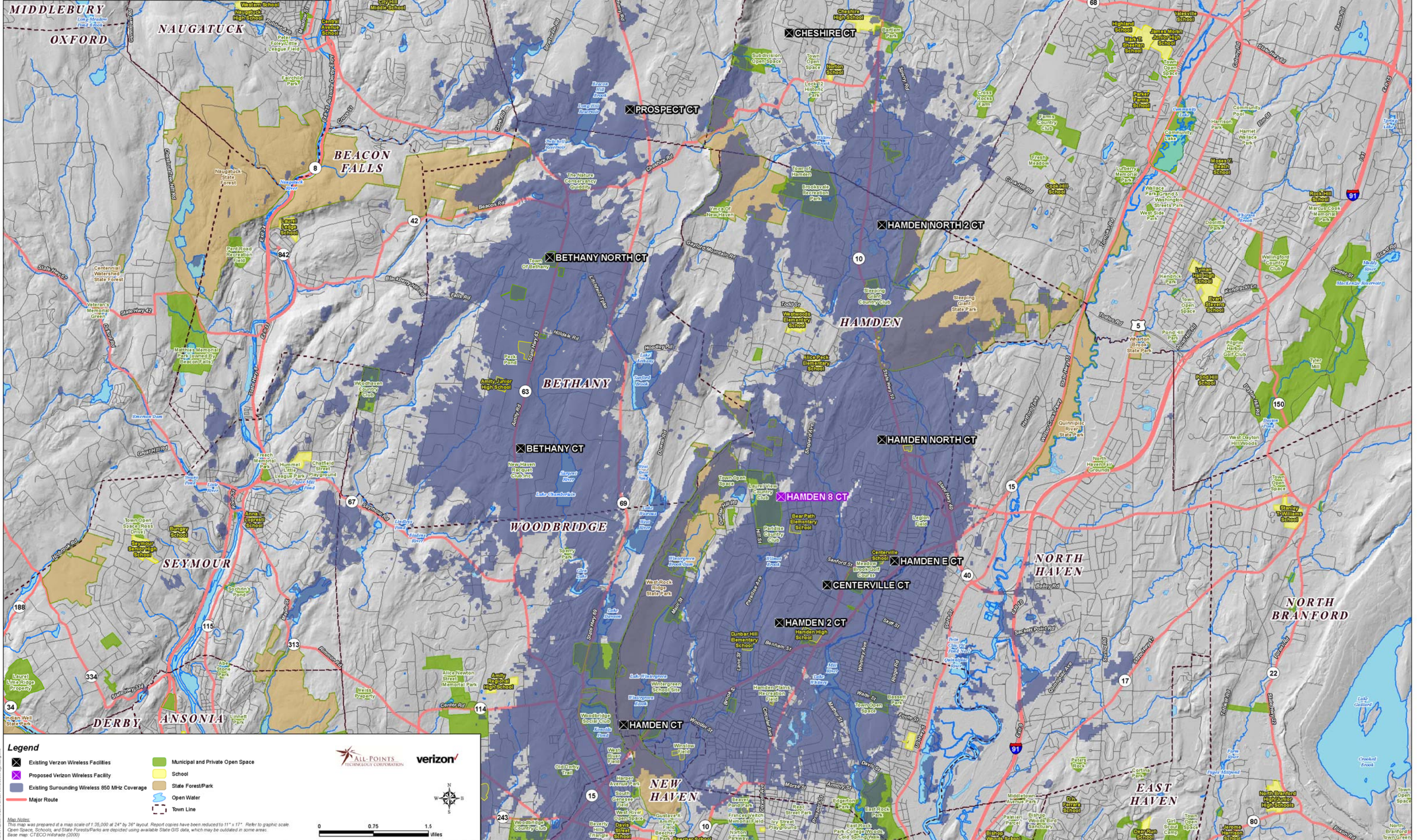
**Proposed Verizon Wireless 700 MHz Coverage  
Hamden, Connecticut and Surrounding Area  
(\*Map Scale is 1:35,000)**

Coverage is depicted at a signal threshold of 120 dB Operational Path Loss



**Existing Verizon Wireless 850 MHz Coverage  
Hamden, Connecticut and Surrounding Area  
(\*Map Scale is 1:35,000)**

Coverage plot assumes 55% site loading on the Cellco system.  
Coverage is depicted at a signal threshold of -85 dBm.



**Legend**

- Existing Verizon Wireless Facilities
- Municipal and Private Open Space
- School
- State Forest/Park
- Open Water
- Major Route
- Town Line

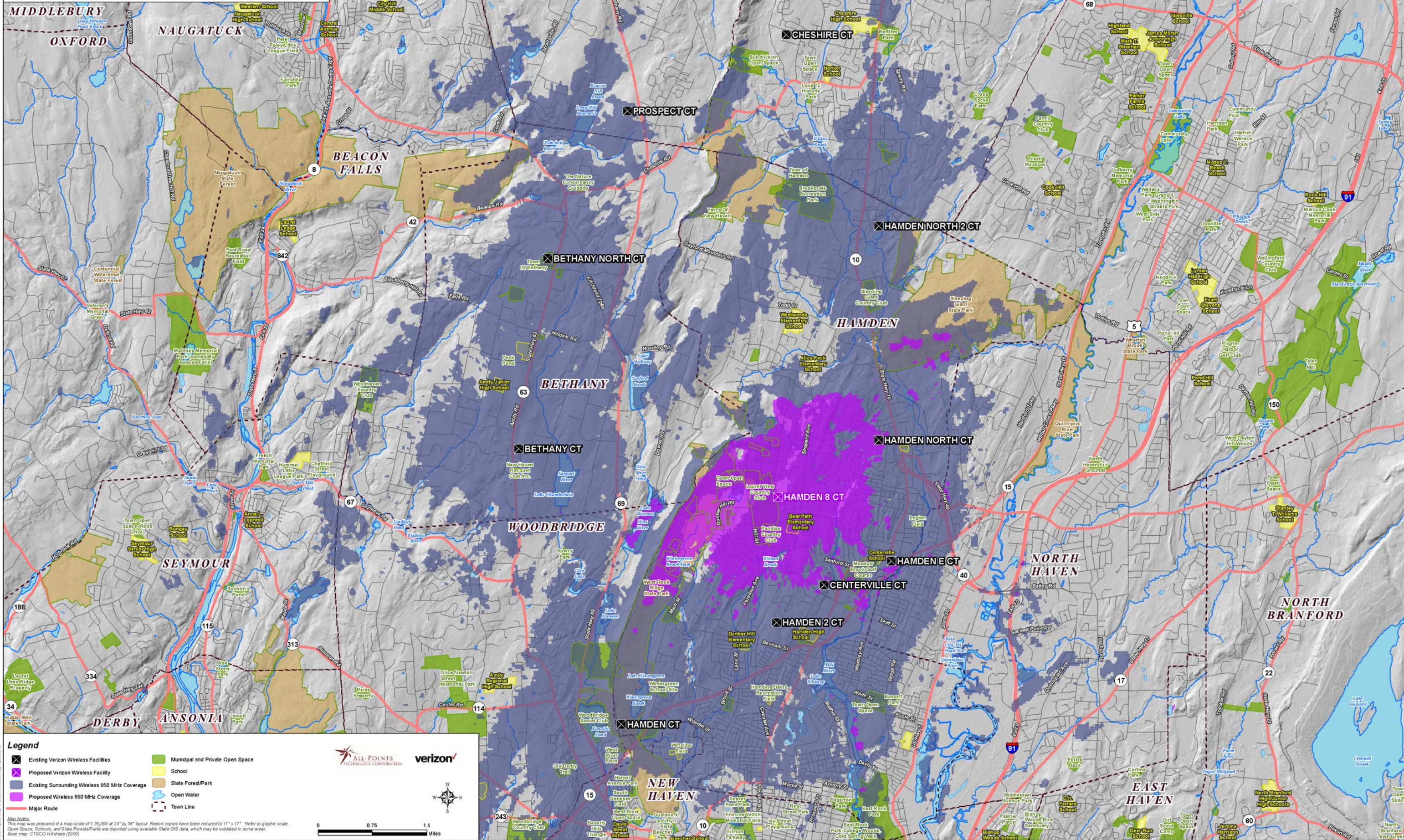
**Map Notes:**  
This map was prepared at a map scale of 1:35,000 at 24" by 36" layout. Report copies have been reduced to 11" x 17". Refer to graphic scale.  
Open Space, Schools, and State Forests/Parks are depicted using available State GIS data, which may be outdated in some areas.  
Base map: CT/ECO Hiltade (2000)

**Scale:** 0 0.75 1.5 Miles

**Logos:** ALL-POINTS TECHNOLOGY CORPORATION, verizon

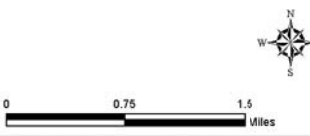
**Proposed Verizon Wireless 850 MHz Coverage  
Hamden, Connecticut and Surrounding Area  
(\*Map Scale is 1:35,000)**

Coverage plot assumes 55% site loading on the Cellco system.  
Coverage is depicted at a signal threshold of -85 dBm.



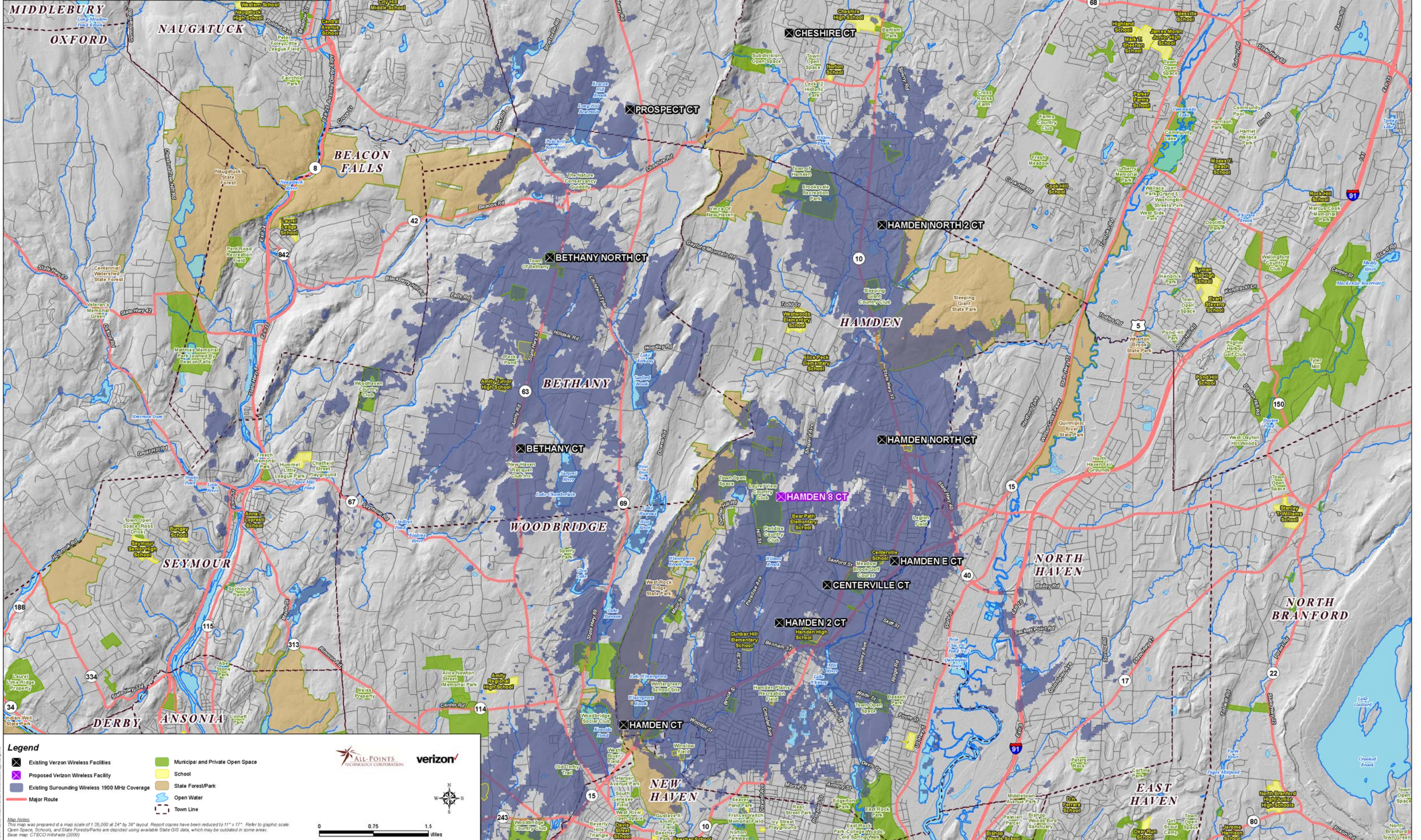
- Legend**
- Existing Verizon Wireless Facilities
  - Proposed Verizon Wireless Facility
  - Existing Surrounding Wireless 850 MHz Coverage
  - Proposed Wireless 850 MHz Coverage
  - Major Route
  - Municipal and Private Open Space
  - School
  - State Forest/Park
  - Open Water
  - Town Line

**Map Notes:**  
This map was prepared at a map scale of 1:35,000 at 24" by 36" layout. Report copies have been reduced to 11" x 17". Refer to graphic scale.  
Open Space, Schools, and State Forests/Parks are depicted using available State GIS data, which may be updated in some areas.  
Base Map: CT/ECO Hiltop (2000)



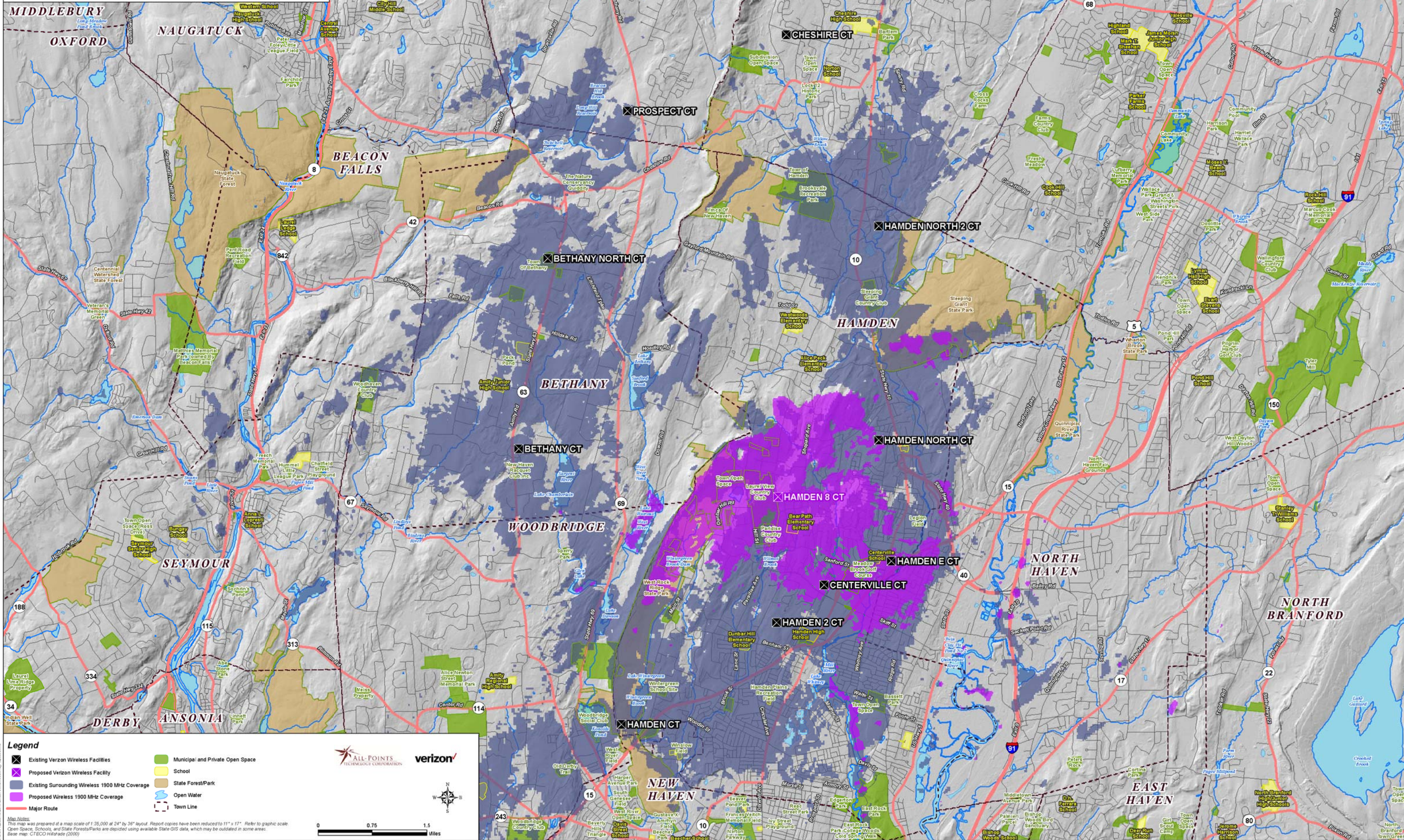
**Existing Verizon Wireless 1900 MHz Coverage  
Hamden, Connecticut and Surrounding Area  
(\*Map Scale is 1:35,000)**

Coverage plot assumes 55% site loading on the Cellco system.  
Coverage is depicted at a signal threshold of -85 dBm.



**Proposed Verizon Wireless 1900 MHz Coverage  
Hamden, Connecticut and Surrounding Area  
(\*Map Scale is 1:35,000)**

Coverage plot assumes 55% site loading on the Cellco system.  
Coverage is depicted at a signal threshold of -85 dBm.



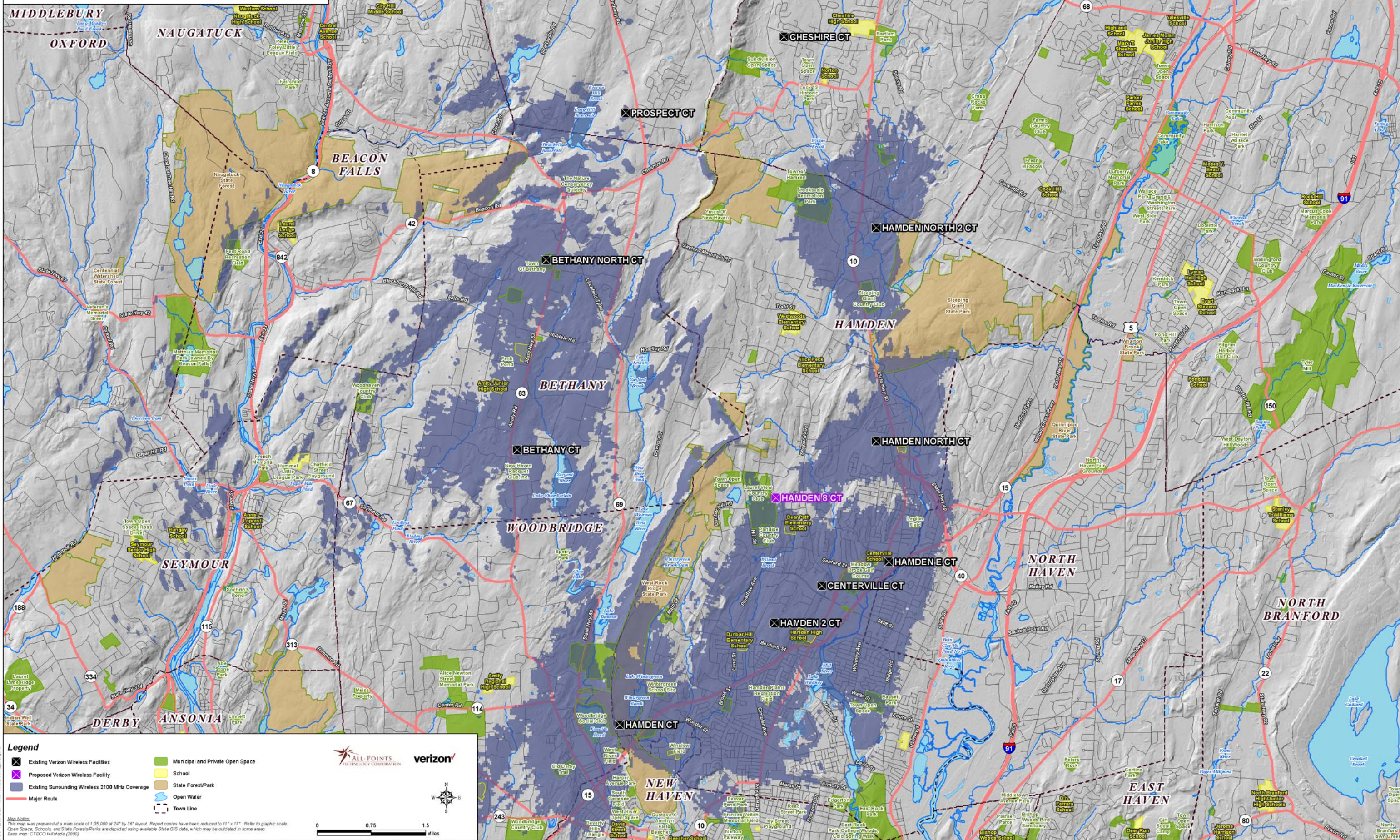
- Legend**
- Existing Verizon Wireless Facilities
  - Proposed Verizon Wireless Facility
  - Existing Surrounding Wireless 1900 MHz Coverage
  - Proposed Wireless 1900 MHz Coverage
  - Major Route
  - Municipal and Private Open Space
  - School
  - State Forest/Park
  - Open Water
  - Town Line



**Map Notes:**  
This map was prepared at a map scale of 1:35,000 at 24" by 36" layout. Report copies have been reduced to 11" x 17". Refer to graphic scale.  
Open Space, Schools, and State Forests/Parks are depicted using available State GIS data, which may be updated in some areas.  
Base map: CT/ECO Hilaride (2000)

**Existing Verizon Wireless 2100 MHz Coverage  
Hamden, Connecticut and Surrounding Area  
(\*Map Scale is 1:35,000)**

Coverage is depicted at a signal threshold of 120 dB Operational Path Loss



**Legend**

- Existing Verizon Wireless Facilities
- Proposed Verizon Wireless Facility
- Existing Surrounding Wireless 2100 MHz Coverage
- Major Route
- Municipal and Private Open Space
- School
- State Forest/Park
- Open Water
- Town Line

**Map Notes:**  
This map was prepared at a map scale of 1:35,000 at 24" by 36" layout. Report copies have been reduced to 11" x 17". Refer to graphic scale. Open Space, Schools, and State Forests/Parks are depicted using available State GIS data, which may be updated in some areas. Base map: CT/ECO Hiltop (2000)

**Scale:** 0 0.75 1.5 Miles

**Logos:** ALL-POINTS TECHNOLOGY CORPORATION, verizon

**Proposed Verizon Wireless 2100 MHz Coverage  
Hamden, Connecticut and Surrounding Area  
(\*Map Scale is 1:35,000)**

Coverage is depicted at a signal threshold of 120 dB Operational Path Loss

