

April 11, 2019

*Via Hand Delivery and Electronic Mail*

Melanie A. Bachman, Esq.  
Executive Director/Staff Attorney  
Connecticut Siting Council  
10 Franklin Square  
New Britain, CT 06051

**Re: Docket No. 470B – Application of NTE Connecticut, LLC for a Certificate of Environmental Compatibility and Public Need for the Construction, Maintenance and Operation of an Electric Power Generating Facility at 180 and 189 Lake Road, Killingly, Connecticut - Reopening of this application based on changed conditions pursuant to Connecticut General Statutes §4-181a(b)**

Dear Ms. Bachman:

Enclosed are fifteen (15) copies of the slide presentation utilized by Lynn Gresock at Tetra Tech at the beginning of the public statement hearing on April 4, 2019.

If you have any questions regarding this presentation please do not hesitate to contact me.

Sincerely,



Kenneth C. Baldwin

KCB/kmd  
Enclosure  
Copy to:  
Parties and Intervenors of Record

## CERTIFICATION OF SERVICE

I hereby certify that on this 11<sup>th</sup> day of April, 2019, a copy of the foregoing was sent via electronic mail, to the following:

Mary Mintel Miller, Esq.  
Reid and Riege, P.C.  
One Financial Plaza, 21st Floor  
Hartford, CT 06103  
mmiller@rrlawpc.com

Mary Calorio, Town Manager  
Town of Killingly  
172 Main Street  
Killingly, CT 06239  
mcalorio@killinglyct.gov

Joshua Berman, Staff Attorney  
Sierra Club  
50 F Street NW., 8th Floor  
Washington, DC 20001  
josh.berman@sierraclub.org

Katherine Fiedler, Esq.  
Connecticut Fund for the Environment  
900 Chapel Street  
Upper Mezzanine  
New Haven, CT 06510  
kfiedler@ctenvironment.org

  
\_\_\_\_\_  
Kenneth C. Baldwin



NTE ENERGY

*Reliable, efficient power for  
a cleaner America*

# PUBLIC STATEMENT HEARING APRIL 4, 2019



**Killingly  
Energy Center**

an NTE Energy Project



# Outline

- Project Description
- Project Location
- Project Benefits
- Project Characteristic Updates
- Environmental Updates

# KEC | Project Description

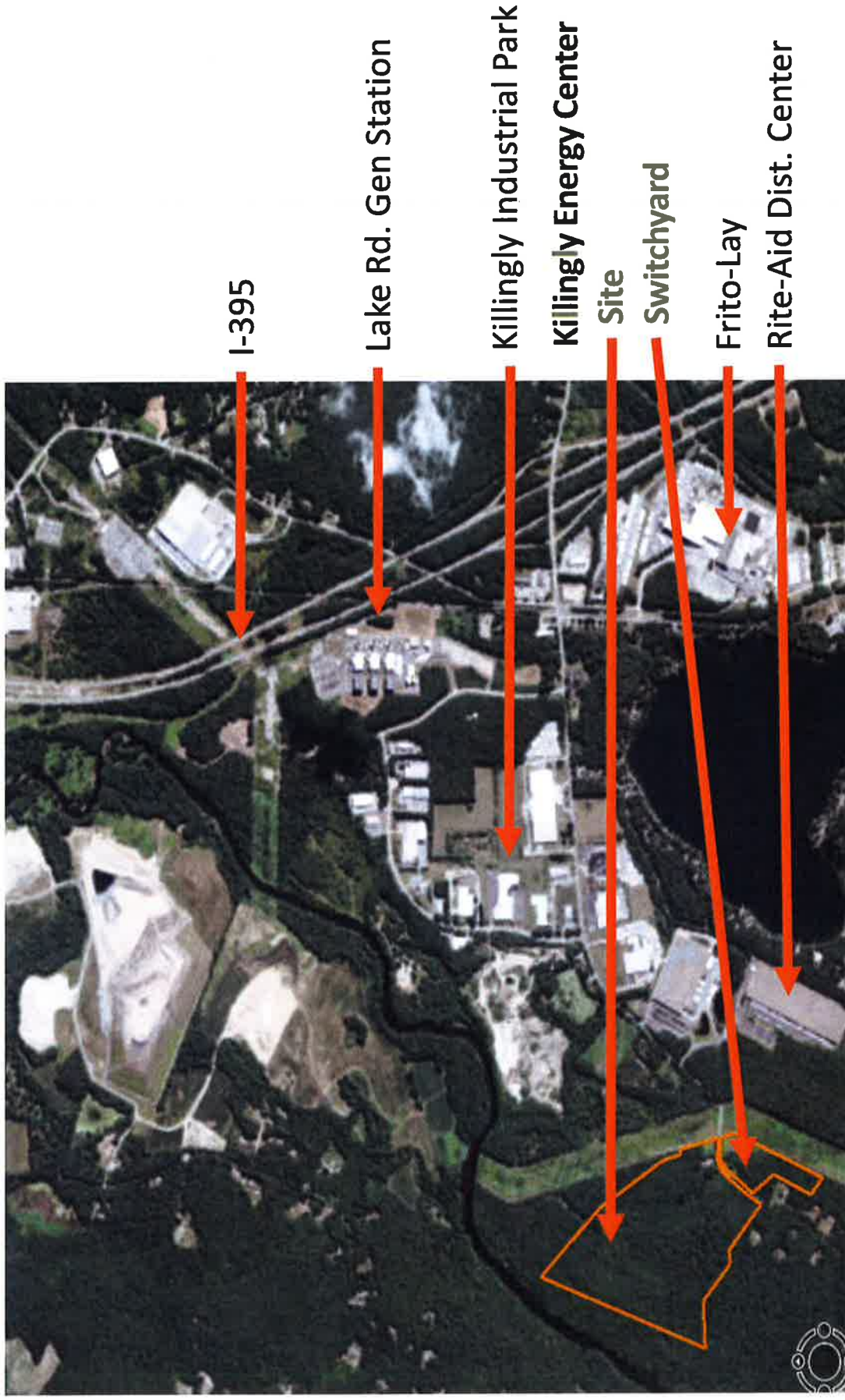
## **Type of Facility:**

- 647 MW (nom.) state-of-the-art combined-cycle electric generating facility – **improved output by ~100 MW using Mitsubishi equipment**
- Clean and efficient gas fired – enhanced reliability due to firm gas supply and back-up fuel
- 150-foot exhaust stack
- Capable of continuous “baseload” power supply
- Operational flexibility to respond to changing demand
- Aggressive water conservation plan with air cooling reduces water demand by 95% over a traditional water cooled facility

## **Interconnections:**

- Interconnection via adjacent Eversource 345-kV circuit
- Natural gas via upgraded Yankee Gas lateral
  - Limited use of Ultra Low Sulfur Diesel as backup fuel for improved reliability
- Water Supply from Connecticut Water Company under existing contract
- Customer of Killingly for wastewater services

# KEC | Background - Location



# KEC | Benefits

- \$700,000,000 capital investment
- ~450 direct union construction jobs
- 20 - 25 permanent, six figure income, operations jobs
- Tax Stabilization Agreement - executed
  - \$91.5 million – to be increased with project improvement
  - Additional ~\$8 million taxes paid to Williamsville Fire District
- Community Environmental Benefits Agreement – executed
  - \$5 million cash; ~20 acre conservation easement; bond for future decommissioning; property value guarantee to neighbors; >\$20 million in infrastructure improvements
- Large Killingly wastewater utility customer
- Commercial operation target – March 2022

# KEC | Benefits (continued)

## **Killingly Energy Center was selected in the ISO-NE capacity auction and is needed to provide:**

- New economic development in the Town of Killingly and the State of Connecticut
- A clean, reliable and affordable source of energy that the region needs to compete in the 21st century
- A new and clean power generation resource to meet the region's demand as older units retire
- A reliable generation source with a robust fuel supply – firm gas supply with on-site back up fuel storage
- Flexible generation to enhance the integration of intermittent renewable resources.



# KEC | Update – Site Layout

- Impact area of footprint unchanged
- Removed retaining wall such that all edges now have graded slopes
- Adjusted fencelines to toe of slope
- Stormwater management concepts maintained; updated to latest standards (results in base elevation change by 3 feet)
- Larger ACC to accommodate additional megawatts, and updated Mitsubishi reequipment (results in some shorter/some taller features)
- Stack height remains the same, although is shifted by 35 feet to keep the adjusted equipment within the same footprint
- Distances from wetlands the same or greater

# KEC | Environmental Updates

- KEC will be one of the cleanest, most efficient natural gas power generation facilities in North America
- The original air permit for Siemens technology was issued by DEEP in June 2017; a minor modification reflecting the latest configuration was issued by DEEP on December 10, 2018.
- KEC, even with the additional electricity output, reflects:
  - Continued commitment to the low emission levels reflected in the original permit, with lower particulate emissions than the original permit
  - High design heat input rating and output, resulting in more efficient fuel consumption
  - Modeling results protective of public health, with lower results than reflected in the original permit
- No increase to planned water and wastewater daily supply strategy or volumes.

# KEC | Environmental Updates (continued)

- No change to KEC's noise impacts; incorporates mitigation to the revised layout such that the facility will continue to meet stringent state and local noise standards.
- No change to KEC's anticipated traffic volumes.
- No change to KEC's safe incorporation of appropriate measures in its design, construction and operation to protect its workers, the local community and the environment
- No change to KEC's visibility impacts; the stack height is unchanged, with base elevation changing only by 3 feet and shifting only about 35 feet (reaffirmed as No Hazard to air navigation by the FAA on March 25, 2019). KEC remains set back on the property, screened by existing topography and vegetation.

## KEC | Environmental Updates (continued)

- No change to avoidance of impact to archaeological or architectural resources; the cemetery on the Switchyard Site will continue to be protected and enhanced.
- No change to the development footprint; KEC continues to avoid wetlands and streams on the Generating Facility Site, maximizing wetland buffers, protecting water quality, and retaining existing wetland functions and values.
- The retaining wall has been eliminated, per Town recommendations, with graded slopes now surrounding the footprint.
- No change to the small amount of wetland fill associated with the Switchyard and Lake Road culvert; mitigation under a USACE General Permit will be undertaken.
- Species protection measures, including a habitat enhancement area for butterfly and moth use, are reflected in the NDDB concurrence letter received on March 11, 2019.



Reliable, efficient power for a cleaner America

[www.nteenergy.com](http://www.nteenergy.com)

