



EXISTING

PHOTO

6

LOCATION

MACKINNON PLACE AT MORRIS LANE

ORIENTATION

NORTHWEST

DISTANCE TO SITE

+/- 0.36 MILE

VISIBILITY

YEAR ROUND





PROPOSED

PHOTO	LOCATION	ORIENTATION	DISTANCE TO SITE	VISIBILITY
6	MACKINNON PLACE AT MORRIS LANE	NORTHWEST	+/- 0.36 MILE	YEAR ROUND





EXISTING

PHOTO

7

LOCATION

PARKER DRIVE

ORIENTATION

SOUTHWEST

DISTANCE TO SITE

+/- 0.65 MILE

VISIBILITY

YEAR ROUND





PROPOSED

PHOTO

7

LOCATION

PARKER DRIVE

ORIENTATION

SOUTHWEST

DISTANCE TO SITE

+/- 0.65 MILE

VISIBILITY

YEAR ROUND



EXISTING

PHOTO

8

LOCATION

BOSTON POST ROAD

ORIENTATION

SOUTHWEST

DISTANCE TO SITE

+/- 0.39 MILE

VISIBILITY

YEAR ROUND



PROPOSED

PHOTO

8

LOCATION

BOSTON POST ROAD

ORIENTATION

SOUTHWEST

DISTANCE TO SITE

+/- 0.39 MILE

VISIBILITY

YEAR ROUND





EXISTING

PHOTO

9

LOCATION

UPPER PATTAGANSETT ROAD

ORIENTATION

SOUTHWEST

DISTANCE TO SITE

+/- 1.07 MILES

VISIBILITY

YEAR ROUND



PROPOSED

PHOTO

9

LOCATION

UPPER PATTAGANSETT ROAD

ORIENTATION

SOUTHWEST

DISTANCE TO SITE

+/- 1.07 MILES

VISIBILITY

YEAR ROUND



EXISTING

PHOTO

10

LOCATION

ISLAND CAMPGROUND AND COTTAGES

ORIENTATION

SOUTHWEST

DISTANCE TO SITE

+/- 0.69 MILE

VISIBILITY

YEAR ROUND



PROPOSED

PHOTO

10

LOCATION

ISLAND CAMPGROUND AND COTTAGES

ORIENTATION

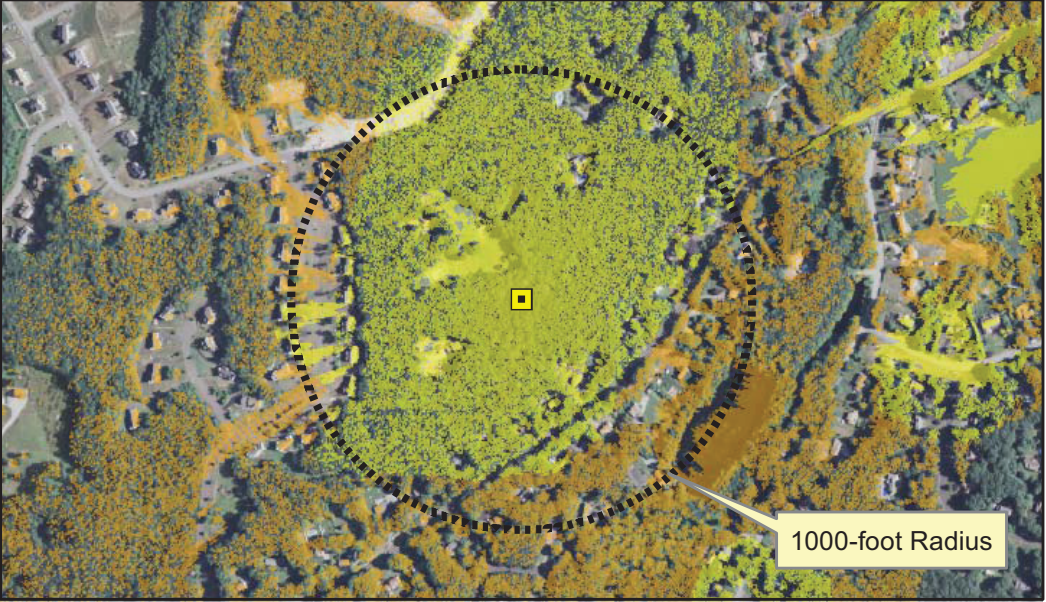
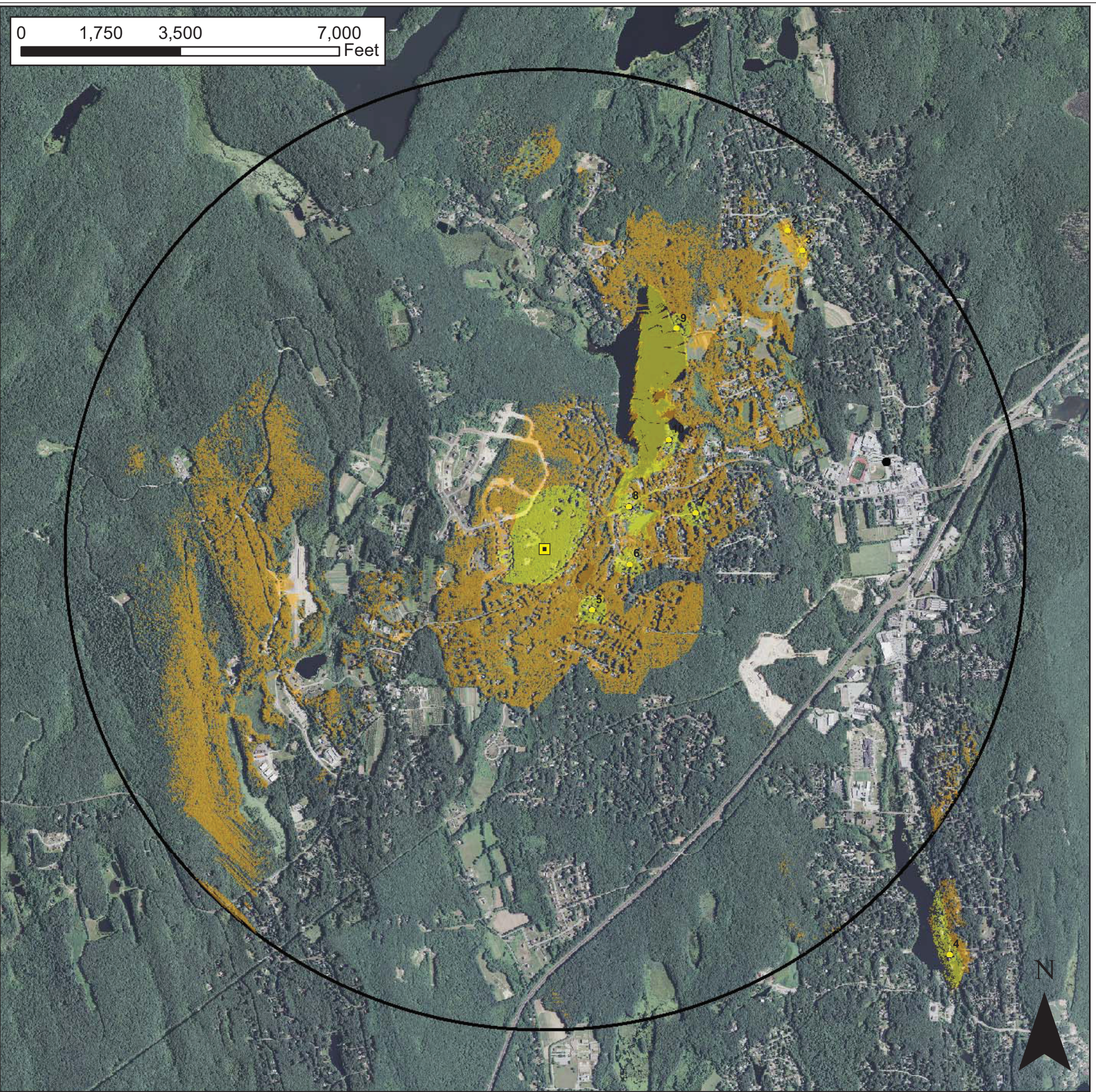
SOUTHWEST

DISTANCE TO SITE

+/- 0.69 MILE

VISIBILITY

YEAR ROUND



Viewshed Map – Aerial Base
 Proposed Wireless Telecommunications Facility
 351A Boston Post Road, East Lyme, CT








Proposed facility height is 194 feet AGL.
 Forest canopy height is derived from lidar data.
 Study area encompasses a two-mile radius and includes 8,042 acres of land.

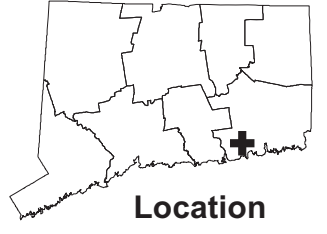
Map compiled 9/8/2015

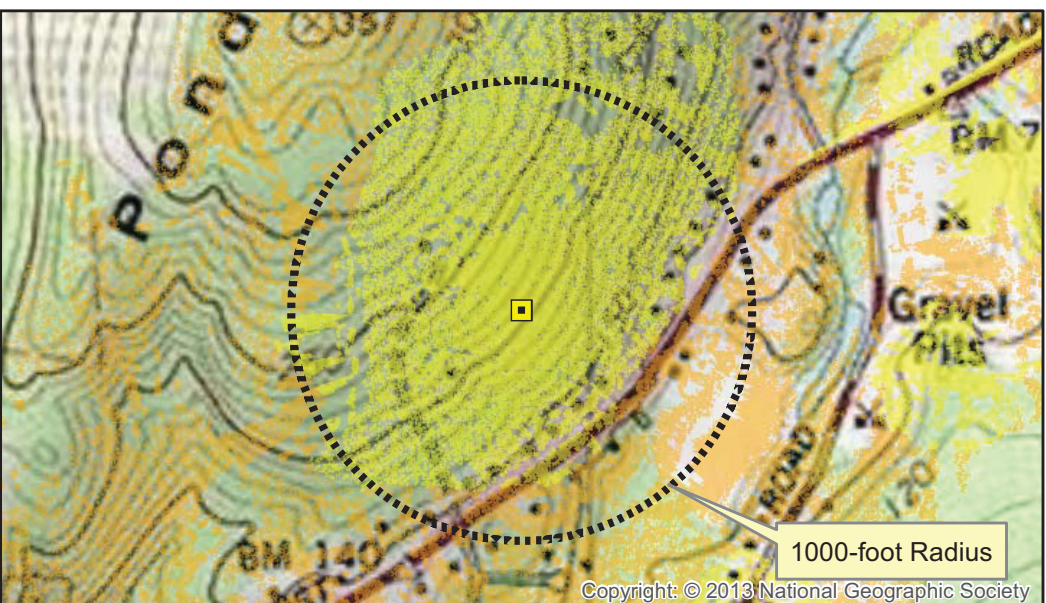
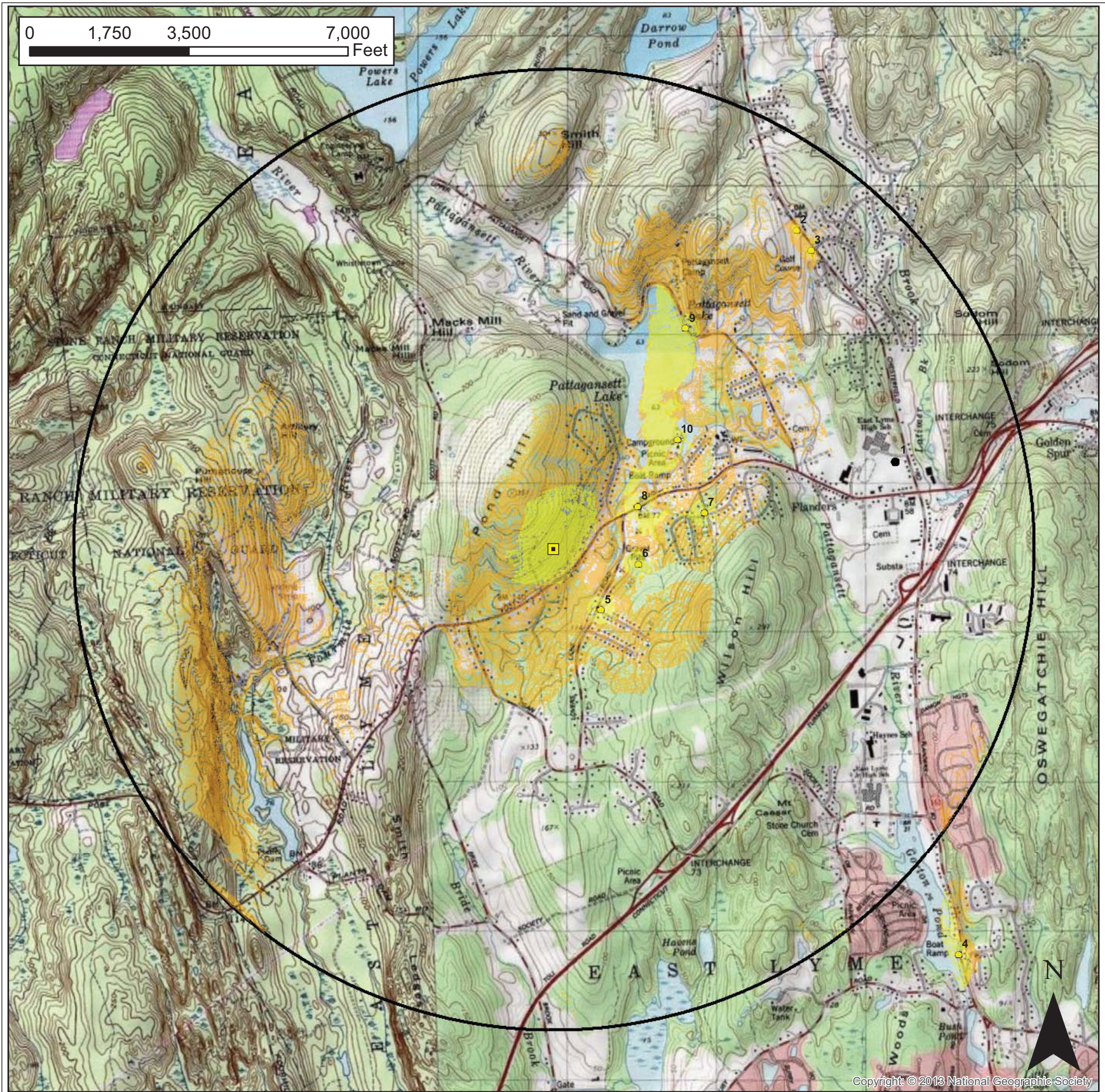
Map information field verified by APT on 6/30/2015.

Only those resources located within the extent of the map are depicted. For a complete list of data sources consulted for this analysis, please refer to the Documentation Page.

Legend

-  Proposed Tower
- Photo Locations**
-  Not Visible
-  Year-round Views
-  Predicted Seasonal Visibility (851± Acres)
-  Predicted Year-Round Visibility (144 Acres)
-  Towns
-  2-Mile Study Area





Viewshed Map – Topo Base

Proposed Wireless Telecommunications Facility
351A Boston Post Road, East Lyme, CT

Proposed facility height is 194 feet AGL.
Forest canopy height is derived from lidar data.
Study area encompasses a two-mile radius and includes 8,042 acres of land.

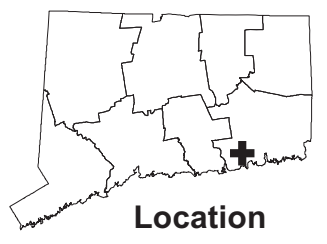
Map compiled 9/8/2015

Map information field verified by APT on 6/30/2015.

Only those resources located within the extent of the map are depicted. For a complete list of data sources consulted for this analysis, please refer to the Documentation Page.

Legend

- Proposed Tower
- Photo Locations**
- Not Visible
- Year-round Views
- Predicted Seasonal Visibility (851± Acres)
- Predicted Year-Round Visibility(144± Acres)
- Towns
- 2-Mile Study Area



DOCUMENTATION

SOURCES CONSULTED FOR VIEWSHED MAPS

351 Boston Post Road
East Lyme, Connecticut

Physical Geography / Background Data

^ LiDAR data – topography, land use and land cover (2007-2012)

United States Geological Survey

*USGS topographic quadrangle maps – Hamburg, Montville, Niantic, Old Lyme (1984)

National Resource Conservation Service

*NAIP aerial photography (2012)

Department of Transportation data

^State Scenic Highways (updated monthly)

Heritage Consultants

^Municipal Scenic Roads

Cultural Resources

Heritage Consultants

^National Register

^ Local Survey Data

Dedicated Open Space & Recreation Areas

Connecticut Department of Energy and Environmental Protection (DEEP)

*DEEP Property (May 2007)

*Federal Open Space (1997)

*Municipal and Private Open Space (1997)

*DEEP Boat Launches (1994)

Connecticut Forest & Parks Association

^Connecticut Walk Books East – *The Guide to the Blue-Blazed Hiking Trails of Eastern Connecticut, 19th Edition, 2006.*

Other

^ConnDOT Scenic Strips (based on Department of Transportation data)

*Available to the public in GIS-compatible format (some require fees).

^ Data not available to general public in GIS format. Reviewed independently and, where applicable, GIS data later prepared specifically for this Study Area.

NOTE Not all the sources listed above appear on the Viewshed Maps. Only those features within the scale of the graphic are shown.

LIMITATIONS

The visibility analysis map(s) presented in this report depict areas where the proposed Facility may potentially be visible to the human eye without the aid of magnification based on a viewer eye-height of 5 feet above the ground and intervening topography and tree canopy heights. This analysis may not necessarily account for all visible locations, as it is based on the combination of computer modeling, incorporating 2012 aerial photographs, and in-field observations from publicly-accessible locations. No access to private properties beyond the host Property was provided to APT personnel. This analysis does not claim to depict the only areas, or all locations, where visibility may occur; it is intended to provide a representation of those areas where the Facility is likely to be seen.

The photo-simulations in this report are provided for visual representation only. Actual visibility depends on various environmental conditions, including (but not necessarily limited to) weather, season, time of day, and viewer location.