

December 7, 2015

**VIA OVERNIGHT DELIVERY**

Hon. Robert Stein, Chairman  
and Members of the Connecticut Siting Council  
10 Franklin Square  
New Britain, Connecticut 06051

Re: Connecticut Siting Council Docket 463  
American Towers, LLC (ATC) & New Cingular Wireless PCS, LLC (AT&T)  
Proposed Wireless Telecommunications Tower Facility  
351A Boston Post Road, Connecticut


Dear Chairman Stein and Members of the Siting Council:

On behalf of American Towers, LLC (ATC) and New Cingular Wireless PCS, LLC (AT&T) and in connection with the above referenced Certificate Application, enclosed please find the following:

1. Applicants Pre-hearing Information with Attachments;
2. Applicants Pre-filed Statement of Facts; and
3. Applicants Newspaper Affidavit of Publication

Should the Siting Council or Staff have any questions regarding this matter, please do not hesitate to contact us.

Very truly yours,

  
Christopher B. Fisher

cc: Tracy M. Collins, Esq.  
First Selectman Mark C. Nickerson  
Matthew Russell, ATC  
Michele Briggs, AT&T

STATE OF CONNECTICUT  
CONNECTICUT SITING COUNCIL

IN RE:

APPLICATION OF AMERICAN TOWERS LLC  
(ATC) AND NEW CINGULAR WIRELESS PCS,  
LLC (AT&T) FOR A CERTIFICATE OF  
ENVIRONMENTAL COMPATIBILITY AND  
PUBLIC NEED FOR THE CONSTRUCTION,  
MAINTENANCE AND OPERATION OF A  
TELECOMMUNICATIONS TOWER FACILITY IN  
EAST LYME, CONNECTICUT

DOCKET NO. 463

December 7, 2015

**HEARING INFORMATION OF  
AMERICAN TOWERS AND NEW CINGULAR WIRELESS**

American Towers, LLC (“ATC”) and New Cingular Wireless PCS, LLC (“AT&T”) (together the “Applicants”), submit the following hearing information to the State of Connecticut Siting Council in the captioned proceeding:

**Counsel Appearing at the Hearing**

Counsel appearing at the hearing will be Christopher B. Fisher, Esq., Cuddy & Feder, LLP.

**List of Witnesses**

1. Kelly Wade Bettuchi, AT&T Associate Director External & Legislative Affairs. Scope of testimony to include AT&T discussions with the Town of East Lyme.
2. Kevin Mason, AT&T Area Manager. Scope of testimony to include current lease and termination rights of the landlord for the existing Docket 67 tower site.
3. Dan Bilezikian, Site Acquisition Specialist, SAI Communications, Inc. Scope of testimony to include prior AT&T site search (note no direct involvement with work until the Fall of 2015 and Mr. Bilezikian replaces a consultant no longer employed by SAI and AT&T).
4. Jennifer Young Gaudet, Consultant. Scope of testimony to include ATC site search.
5. Camilo A. Gaviria, P.E., Centek Engineering, Inc. Scope of testimony to include site civil, structural and storm water engineering.
6. Harry Rocheville, P.E., Centek Engineering, Inc. Scope of testimony to include site civil, structural and storm water engineering.

7. Dean Gustafson, All-Points Technology Corporation, P.C. Scope of testimony to include soils, wetlands and aquifer investigations as well as species and habitat reviews.
8. Martin Lavin, C-Squared Systems. Scope of testimony to include AT&T's radio frequency need and relocations analyses.
9. Michael Libertine, LEP, Director of Siting and Permitting, All-Points Technology Corporation, P.C. Scope of testimony to include visual resource evaluations and State Historic Preservation Officer (SHPO) and Tribal Historic Preservation Officer (THPO) consultations.

Resumes/professional biographies attached.

### **Documents to be Administratively Noticed**

None at this time.

### **Exhibits to be Offered**

The Applicants will offer as exhibits the following:

1. Application of ATC and AT&T submitted on October 5, 2015.
2. ATC and AT&T Bulk Filing submitted on October 5, 2014.
3. Affidavit of Publication of Legal Notice dated September 30, 2015.
4. ATC and AT&T Responses to Siting Council Interrogatories Set I, dated December 3, 2015.
5. Affidavit of Sign Posting, dated November 30, 2015.
6. PowerPoint presentation for December 15, 2015 public hearing session

### **Affidavit of Newspaper Publication**

Notice was published in The Day newspaper on two insertion dates of September 23, 2015 and September 30, 2015 in accordance with State statute. A newspaper publisher's Affidavit of Publication of the Legal Notice published is attached.

### **Additional Exhibits**

The Applicants reserve the right to offer additional exhibits, testimony, witnesses and administratively noticed materials as may be necessary during the hearing process and on redirect.

Dated: December 7, 2015

Christopher B. Fisher  
Cuddy & Feder LLP  
445 Hamilton Avenue, 14<sup>th</sup> Floor  
White Plains, New York 10601  
(914)-761-1300

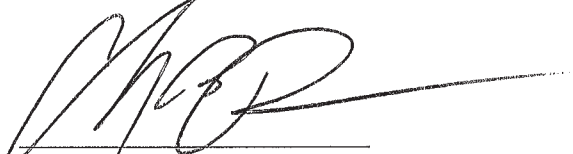
CERTIFICATE OF SERVICE

I hereby certify that on this day, an original and fifteen copies of the foregoing was sent electronically and by overnight mail to the Connecticut Siting Council and to:

The Town of East Lyme  
First Selectman Mark C. Nickerson  
P.O. Box 519  
108 Pennsylvania Avenue  
Niantic, Connecticut 06357

Tracy M. Collins, Esq.  
Waller, Smith & Palmer, P.C.  
52 Eugene O'Neill Drive  
New London, CT 06320

Dated: December 7, 2015



Christopher B. Fisher

cc: Matthew Russell, ATC  
Michele Briggs, AT&T

ATTACHMENT 1

## **Kelly Wade Bettuchi**

*175 Genesee Lane*

*Madison CT 06443*

Home: (203) 421-9336 Mobile: (860) 481-2461

### Professional Experience:

#### **3/2010-Present – AT&T, New Haven, CT**

##### **Associate Director – External & Legislative Affairs**

- Responsible for advancing legislative and regulatory agenda of the company at the State Capitol
- Responsible for municipal government relations support.
- Conducts various community events to bridge relationships between community and elected officials. Serves as the face of the corporation in the communities it serves.
- Represents AT&T on local boards and commissions.
- Administers AT&T Foundations and local community grant programs.
- Responsible for managing budget for Connecticut E&LA business unit and state-wide Employee Engagement efforts.

#### **1/2008- 3/2010–AT&T, New Haven, CT**

##### **Area Retail Connection Manager**

- Manage 15 Sales Managers responsible for Wireline product sales and Wireless Data and Gross Adds for the New England market's company owned and indirect sales channels.
  - **Consistently exceeded \$3M monthly revenue target**
- Responsible for Data Literacy Program Certification execution.
- Work directly with New England Sales Directors to train and develop their staff and manage initiatives as needed to meet and exceed each territories monthly sales target.

#### **7/2007-1/2008 AT&T, New Haven, CT**

##### **Area Manager – Sales Operations**

- Responsible for providing operational support to Door to Door, Retail, P2R and Sponsorship teams within the CT VPGM organization.
  - **Successfully launched U-verse Voice across channels and achieved highest U-verse Voice attach rates across enterprise.**
- Primary responsibility included vendor management, new product launches, sales and system training, local marketing initiatives, Offer Management, and process improvement.

#### **1/2006 – 7/2007 SBC, New Haven, CT**

##### **Project Manager – Local Market Area Execution**

- Responsible for the management and launch of AT&T East's retail initiatives for High Speed Internet Sales and Combined Billing in Cingular Wireless stores. Created detailed project plan and successfully negotiated approval from both AT&T and Cingular Wireless leadership.
- Primary responsibilities include defining business/technical requirements and project milestones, identify and mitigating risks, tracking project financials, training, implementing daily sales reporting and merchandise re-branding.
- Negotiate contracts with 3<sup>rd</sup> party sales staffing and several retailers and malls to facilitate AT&T brand presence.
- Responsible for back office support of U-verse sales provisioning within the CT VPGM organization.

#### **12/2003 -1/2006**

##### **SBC, New Haven, CT**

##### **Project Manager- Consumer Operations/Marketing**

- Responsible for Connecticut operations of corporate wide employee referral program. Responsibilities included program planning and implementation, brand image development, budget tracking, facilitating the development of IT automation to increase efficiency, management of call center operations and resource allocation.
  - **Exceeded 8.6M revenue target by 30%; Exceeded employee participation target by 26%**
- Planned and oversaw promotional and corporate sponsorship events including logistical planning, securing and managing vendors and drafting creative copy. Developed communication plans to cultivate external customer and community relationships.

12/2002 – 12/2003

SBC SNET, Hamden, CT

**Field Manager - Installation & Repair**

- Supervised and managed 13 direct reports with responsibility for the provisioning and repair of outside plant facilities.

- **Increased teams quality/productivity assessment scores by 17% by year end.**

Duties included interfacing with customers and other departments to resolve service issues; ordering and maintaining technician materials and tools; monitoring and developing technician performance through the utilization of mechanized support tools; document coaching and disciplinary action; providing technicians with technical support and training

06/2002 - 12/2002

SBC SNET, Cheshire, CT

**Management Training Associate**

- Developed formalized training in a classroom environment as well as day to day support for employees within Network Operations.
- Maintained system user access requirements and conducted new employee orientation/hiring.
- Departmental liaison for issues relating to process development and improvement.

03/2000 - 06/2002

SNET, Cheshire, CT

**Manager - Maintenance Center/ Training Manager**

- Supervised and managed 15 direct reports in a call center environment responsible for responding immediately to service related problems and providing technical support for network problem resolution. Maintained critical service levels as mandated by DPUC.
- Additionally managed a select team focused on improving Digital Loop Carrier Mechanized testing statewide.  
- **Produced 14% year end improvement**
- Served on DSL Process Improvement Committee  
- **Reduced repair intervals by 41.9% and implemented process changes to improve overall customer satisfaction.**

02/1995 - 03/2000

SNET, Meriden, CT

**Customer Service Representative**

- Analyzed, negotiated and resolved service problems through direct customer contact with business and residential customers.
- Representative to the Repair Process Redesign Committee which recommended 11 initiatives to decrease non-productive work helping to reduce overall cost to the business.  
- **Approximately 40 percent of the repair process was revised increasing organizational effectiveness.**

Education:

- **Masters of Business Administration (MBA), (In progress)**  
Quinnipiac University, Hamden, CT
- **Bachelor of Science, Political Science (Awarded 1996)**  
Southern Connecticut State University, New Haven, CT

Professional Skills and Strengths:

- Skilled and experienced public speaker
- Technical writing expertise
- Track record of successful project management
- Over 15 years experience managing, mentoring, and developing direct reports
- Extremely goal and deadline oriented
- Microsoft Word, Access, Excel, PowerPoint, Visio and Internet Explorer, and MAC OS

Professional Licenses, Accreditations, and Memberships:

- Awarded Key Contributor Award 2008-2014
- Winner of the 2002, 2004, and 2005 **Sustained Excellence and Trust (SET) Award**
- Winner of the 2001 **SNET Outstanding Performance Award**
- Co-chair of Professional Women of AT&T Programming Committee and Chair of Community Relations Committee



- AT&T PAC Administration Committee
- Currently serving on the Board of Directors for Junior Achievement of Southwest New England (New Haven Board), Town Green Special Services, Greater New Haven Chamber of Commerce, Greater Valley Chamber of Commerce, Bridgeport Regional Business Council, Milford Chamber of Commerce, and Quinnipiac Chamber of Commerce.
- Serving as chair of the Government Relations Committees of the Bridgeport Regional Business Council, Greater Valley Chamber of Commerce and Quinnipiac Chamber of Commerce.

## KEVIN MASON

10 Nouvelle Way S609, Natick, MA 01760

(508) 202-2854

[km8621@att.com](mailto:km8621@att.com)

### QUALIFICATIONS PROFILE

- Highly accomplished Project Manager with extensive experience in managing cross-functional teams to complete projects within time and monetary guidelines.
- Diverse industry knowledge, with expertise in legal, telecommunications, construction, and real estate environments.
- Directed all aspects of project planning, including scope, timelines, and resource and vendor administration.
- Liaised effectively with client, managing customer expectations and acting as intermediary between project teams and client.
- Demonstrated ability to recruit and train teams to meet high quality standards, developing performance review systems for technical and non-technical core competencies.
- Comprehensive understanding of real estate and construction legalities, drafting and lease review, zoning, compliance and permit requirements for projects.

### PROFESSIONAL EXPERIENCE

**Area Manager – Construction and Engineering, New England – AT&T Mobility Corporation** June 2012-present

*Framingham, MA*

- Manage New Site Build projects for AT&T Mobility including oversight of “Turfing” vendors.
- Responsible for Capital forecasting, budgeting, Purchase Order tracking and auditing of fixed network pricing models.
- Develop strategic approach to development of critical sites based on RF demand.

**Program Manager, Site Acquisitions, Inc.** October 2003-June 2012  
*Salem, NH*

- Managed Project teams for New Site Build, UMTS, LTE, Ethernet projects for AT&T Mobility including vendor delivery targets and performance objectives.
- Coordinated real estate, construction, compliance, and implementation activities for the deployment of new cell sites and overlay projects throughout New England.

**Senior Project Manager, Wireless Facilities, Inc.** February 1996 -October 2003  
*San Diego, CA*

- Supervise Site Acquisition Specialists in administration of lease, zoning, and permit requirements. Recruit new regional leasing and zoning personnel, training and mentoring performance and development. Communicate effectively with other functional areas to ensure positive interaction and performance (*Montvale, NJ*).

#### Key Projects:

- Lead all aspects of site acquisition for GSM overlay projects with Bechtel/Cingular in the Northeast Region (*Bolton, MA*).
- Developed 100 cell sites for capacity and PCS overlay projects for Verizon in NJ, supervising Site Acquisition Specialists and Construction Managers (*Montvale, NJ*).

- Analyzed leases and performed file audit services for 65 Bechtel/AT&T Wireless 3G sites in Pittsburgh and Buffalo (*Pittsburgh, PA*).
- Managed Permit Specialist and 3<sup>rd</sup> party expeditors, initiated change orders and milestone invoicing for expansion of 300 existing sites on the AT&T Wireless overlay project in New York and New Jersey (*Montvale, NJ*).
- Managed full-life cycle planning for 150-site Metricom wireless data network in Connecticut and New York, administering 3<sup>rd</sup> party contractors and scope of work (*Montvale, NJ*).
- Responsible for TeleCorp PCS network deployment in New Hampshire and Massachusetts supervising 180 sites and Site Acquisition Specialists, Construction Managers, and Sub-Contractors (*Nashua, NH*).
  - Closed critical leases in timely manner, allowing for network launch.
  - Planned zoning strategies to meet client and project needs.
  - Managed budget, municipal RFP's, and invoicing.
  - Sourced and procured all site materials and resources.
  - Produced all reports and dashboards for client organizations.

**Engineering Manager, WGBH Educational Foundation** May 1987-February 1996  
*Boston, MA*

- Engineering Manager (1990-1996) Scheduled post-production facilities for national PBS programming, managing audio post-production, offline editing, and non-linear editing facilities.
  - Administered equipment vendor budgets and contracts.
  - Supervised freelance and staff engineers.
  - Participated in union negotiations for all film personnel with IATSE.
- Production Assistant (1988-1989).
- Community Relations Coordinator (1987-1988).

**EDUCATIONAL  
BACKGROUND**

**Master's Certificate in Project Management**, Currently Enrolled  
*ESI International & George Washington University (online)*

- Courses include: Managing Projects in Organizations, Quality for Project Managers, Scheduling and Cost Control, Risk Management, and Contracting for Project Managers

**J.D., Cum Laude, New England School of Law, 1994**

*Boston, MA*

- New England School of Law Trustee Scholarship
- AmJur Award in UCC: Commercial Paper

**Bachelor of Arts in Communications, Cum Laude, University of Massachusetts, 1987**

*Amherst, MA*

**PROFESSIONAL  
ASSOCIATIONS**

**Project Management Institute – Project Management Professional (PMP),**  
Member, 2001-present

**Massachusetts Bar Association**, Member, 1994-present

## Daniel Bilezikian

---

260 Cedar Hill St., Marlboro, MA 01752  
Phone: 401-368-0006 (cell) ~ 508-252-5888 (fax)  
Email: dan.bilezikian@sai-comm.com

### QUALIFICATIONS

*Seasoned telecommunications professional.* Over 14 years telecommunications siting and permitting experience in the challenging New England environment.

### PROFESSIONAL EXPERIENCE

*Site Acquisition Specialist, Site Acquisitions, Inc. (April 2002 – Present)*

Responsible for the identification, leasing, zoning and permitting of sites for New Cingular Wireless, PCS (AT&T) primarily in the Eastern Massachusetts, Rhode Island, and Connecticut markets. Coordinates subcontractor engineering services and due diligence, and preparation for Connecticut Siting Council (“CSC”) filings and hearing proceedings. Provides testimony at CSC proceedings.

*Site Acquisition Specialist, American Tower Corporation (March 2001 – April 2002)*

Assigned to in-house site acquisition consulting team serving Cingular Wireless in the Massachusetts market. Responsible for the identification, leasing, zoning and permitting of sites and coordination of subcontractor engineering and due diligence.

*Principal, Enviro-Tech Drilling, Inc. (January 1986 – February 2001)*

Founder and manager of this environmental/geotechnical drilling firm. Services included test borings, soil sampling, and monitor well installation throughout New England and New York.

*Production Geologist, Shell Oil Co., New Orleans, LA, Bakersfield, CA (January 1981 – June 1985)*

Responsible for implementing development of proven oil and gas reserves in South Texas and the San Joaquin Valley, California.

### EDUCATION

University of Arizona (1980), B.S. Geological Engineering

**References available upon request**

# JENNIFER YOUNG GAUDET

---

## **CONSULTANT TO WIRELESS COMMUNICATIONS INDUSTRY**

As consultant to carriers, tower owners and vendor contractors with over 30 years experience in telecommunications regulation and land use, Ms. Gaudet performs due diligence, acquisition, zoning and permitting activities in connection with site development and modification. Works with multi-discipline teams to develop effective processes and applications.

## **DEVELOPMENT MANAGER**

HPC WIRELESS SERVICES, LLC – 2008 - 2015

Oversaw leasing, zoning and permitting projects throughout the East Coast; managed and trained employees and subcontractors; established protocols for new client project and internal initiatives; managed complex zoning activities across multiple projects; participated directly in select leasing and zoning activities, including testimony before various jurisdictions.

## **CONSULTANT TO WIRELESS COMMUNICATIONS INDUSTRY – 1999 to 2008**

Oversaw permitting of wireless telecommunications carriers' efforts through multi-discipline teams to develop new facilities, including site selection and design, development and support of applications, and municipal and community relations; testified as expert witness before Connecticut Siting Council; conducted municipal zoning presentations and provided legal representation to tower developers in permitting proceedings before Connecticut Siting Council and municipalities; advised carriers and developers on regulatory and legislative affairs.

## **REGULATORY MANAGER – 1995 to 1999**

BELL ATLANTIC MOBILE (now Verizon Wireless)

Led approval process for multi-phase tower development in challenging geographic areas, including municipal relations; coordinated efforts of competing carriers to advance State goal of minimizing proliferation of towers; managed zoning matters to advance corporate build plan; testified as expert witness at Connecticut Siting Council; conducted municipal zoning presentations; coordinated environmental permitting for generators at over 100 sites with outside contractor; served as registered lobbyist.

## **ATTORNEY, PRIVATE PRACTICE – 1986 to 1995**

Engaged in private legal practice, primarily before the Connecticut Department of Public Utility Control and Connecticut Siting Council; participated in early stages of wireless site development in Connecticut at State and local levels; specialized practice included wireless telecommunications, cable television and water utility matters.

## **REGULATORY/ADMINISTRATIVE STAFF – 1979 to 1986**

STATE OF CONNECTICUT DEPARTMENT OF PUBLIC UTILITY CONTROL

Worked in increasingly complex positions within administrative and legal divisions of state agency with jurisdiction over energy, water and telecommunications entities; served as hearing officer and case manager/coordinating staff on telecommunications, water and energy matters; drafted decisions for adoption by agency commissioners; increased agency compliance with statutory processing requirements and enhanced consistency of agency decisions; served as Acting Director of Adjudication Division.

**J.D., 1986 – University of Connecticut School of Law**

Hartford, Connecticut

**A.B., 1974 - Mount Holyoke College**

South Hadley, Massachusetts

**PROFILE**

Mr. Gaviria has over 10 years of experience in structural engineering design and approximately 3 years of project management. He has been responsible for the design on a broad set of publicly and privately developed projects as well as having been responsible for the project management of approximately 400 telecommunications facilities within the Northeast and California. Significant projects have included schools, public housing projects, building restoration, commercial buildings, and telecommunication facilities.

**REPRESENTATIVE PROJECTS****Structural Design**

LA Fitness International (Hamden, CT) • Watertown Fire Department (Watertown, CT) • Sterling Power Plant Cogeneration & Expansion, Yale University School of Medicine (New Haven, CT) • Medical Office Building, Hartford Medical Group (South Windsor, CT) • Kaplan Residence (Guilford, CT) • Retail Building (Bethel, CT) • Rite Aid Pharmacy (Northeast Region) • Walgreens Pharmacy (Northeast Region) • Stratfield Elementary School Additions and Renovations (Fairfield, CT) • CCSU Balf-Savin Field Bleachers (New Britain, CT) • CT Center for Child Development (Milford, CT) • AT&T Mobility (Greater New York Area) • AT&T Mobility (Bay Area, CA)

**Peer Review**

Aldi Distribution Center (South Windsor, CT) • Trumbull High School (Trumbull, CT) • Albion Street Apartments (Bridgeport, CT)

**Structural Condition Survey**

The Rao Building Renovations (New Britain, CT) • Stratfield Elementary School Additions and Renovations (Fairfield, CT) • AT&T Mobility (Greater New York Area) • Manchester Community Center (Manchester, CT)

**Special Inspection Coordination**

Sterling Power Plant Cogeneration & Expansion, Yale University School of Medicine (New Haven, CT) • Kaplan Residence (Guilford, CT) • Stratfield Elementary School Additions and Renovations (Fairfield, CT) • Fair Haven Community Health Center (New Haven, CT) • Yale Marsh Botanical Greenhouse No.4 (New Haven, CT) • Center for Child Development (Milford, CT) • Casa de Francisco (Hartford, CT)

**EDUCATION**

B.S., Engineering with an emphasis in Structural Engineering, Roger Williams University, Bristol, Rhode Island.

**REGISTRATIONS AND MEMBERSHIPS**

- Professional Engineer: State of CT #27517
- Professional Engineer: State of NJ #51802
- Professional Engineer: State of NY #094735-1
- NCEES Record Holder: #58246

**PROFESSIONAL EXPERIENCE****Project Engineer:**

- Project management of approximately 400 unmanned telecommunications facilities.
- Managing/forecasting schedule for engineering deliverables.
- Identifying and keeping track of in/out of scope items while managing cost approvals from client
- Review structural calculations performed by junior engineers.

**Structural Engineer:**

- Support senior engineers in the design of structures through the origination of code driven design calculations and computer 3D structural modeling.
- Review contractor submitted documents (e.g. shop drawings, material specifications, etc.)
- Perform site visits upon contractor's request to inspect installed formwork, rebar and installed structural framing for conformance to the supplied construction drawings and vendor supplied documents.
- Perform structural condition surveys on existing structures to establish structural capacity.

**WORK HISTORY**

**Centek Engineering, Inc.** (Feb. 2015 - Present)

**Bechtel Power Corp.** (Sept. 2011 - Feb. 2015)

**Michael Horton Assoc., Inc.** (Apr. 2007 - Sept. 2011)

**BL Companies, Inc.** (July 2005 - Apr. 2007)

**Kaestle Boos Assoc., Inc.** (May 2004 - July 2005)

**PROFILE**

Mr. Rocheville is certified as an Engineer in Training (E.I.T.) and is aspiring to achieve Professional Engineering (P.E.) status after completion of the required experience and testing requirements. He has over 3 years of experience in Civil Engineering environments. Eager to learn and apply new skills in order to expand diversity of work. Able to adapt quickly to new challenges and problem solve. Able to work collaboratively or independently depending upon organizational needs.

---

**REPRESENTATIVE PROJECTS****Palmer Pond, Voluntown, CT:**

Verizon Wireless Communications Facility. Four-carrier rawland facility.

**Glastonbury Montano Road, Glastonbury, CT:**

AT&T Wireless Communications Facility. Co-location on an existing 120-ft tall monopole tower.

**Stockbridge 4, Stockbridge, CT:**

Verizon Wireless Communications Facility. Facility located in abandoned compound.

**Stratford West, Stratford, CT:**

Verizon Wireless Communications Facility. Co-location on an existing 99-ft tall monopole tower.

**Waterbury North, Waterbury, CT:**

AT&T Wireless Communications Facility. Rawland facility locating on existing NU transmission tower.

**QVEC/Danielson 2, Killingly, CT:**

Quinebaug Valley Emergency Communications and Verizon Wireless Communications Facility. Facility expansion and additional tower installation. QVEC equipment relocated to new tower and Verizon co-located on existing tower.

**Silver Hill, New Canaan, CT:**

Three carrier Phoenix Partnership rawland facility with 120-ft tall unipole tower.

---

**EDUCATION**

B.S., Civil Engineering, University of New Haven, West Haven, CT

**WORK EXPERIENCE****Centek Engineering, Inc. – Civil Engineer;**

*(3 years)* Civil engineer for various, wireless communication applications, including rawland, co-location, communication tower and transmission tower facilities. Responsible for the design of equipment compounds, analysis of existing and proposed drainage systems, and implementation of erosion and sedimentation controls. Also, responsible for managing multiple projects and corresponding with appropriate parties.

**The City of New Haven Engineering Department - Internship;**

*(1 year)* Responsible for assisting Professional Engineers on multiple city projects in different facets of Civil Engineering.

**Dean Gustafson**  
**Professional Soil Scientist**  
**Senior Wetland Scientist**  
**All-Points Technology Corporation, P.C.**  
**3 Saddlebrook Drive, Killingworth, CT 06419**  
**860-663-1697                      860-836-6576**

**General Background**

Mr. Gustafson has over 24 years of professional experience in the environmental consulting field. His experience includes NEPA/CEPA documentation, wetlands (delineation, evaluation, mitigation design, monitoring, stream restoration, and local, state and federal permitting), water-quality investigations, coastal-zone-management studies, natural-resource and ecological evaluations. Mr. Gustafson is experienced in vernal pool monitoring and assessment, including identification of a wide variety of native amphibians and reptiles that utilize vernal pool habitats. Mr. Gustafson also has extensive experience with the Connecticut Department of Energy and Environmental Protection Natural Diversity Data Base and has resolved numerous potential rare species conflicts with proposed developments. Mr. Gustafson has particular expertise in wetland identification, soil mapping, soil classification, vegetative and hydrology surveys, wetland impact assessment, wetland mitigation design and oversight. In addition, he has extensive experience in local, state, and federal wetland permitting including having worked on over 100 Connecticut Siting Council dockets along with providing expert testimony at Council hearings. Mr. Gustafson has consulted on numerous projects which involve soils related issues such as erosion and sediment control planning, vegetative soil stabilization and storm water management BMP evaluation and selection. He has served as the Environmental Compliance Monitor on several Connecticut Siting Council approved projects. Mr. Gustafson's water quality experience includes stormwater studies for compliance with National Pollution Discharge Elimination System (NPDES), Section 401 Water Quality Certification, and the 2004 Connecticut DEP Stormwater Quality Manual.

**Employment History**

Vanasse Hangen Brustlin, Inc., 54 Tuttle Place, Middletown, Connecticut

- Natural Resource Group Leader 1997 to 2012

Atlantic Environmental Services, Inc./GEI Consultants, Colchester, Connecticut

- Senior Project Scientist 1992 to 1997

Soil Science & Environmental Services, Cheshire, Connecticut

- Professional Soil Scientist 1988 to 1992

**Key Projects**

**On Call Environmental Services, Northeast Utilities Transmission Group**

Task Manager in support of various Connecticut projects, including assessment and permitting of bulk power substations, transmission lines/structures, underground utility installations, and environmental investigations of existing facilities. Services include pre-acquisition due diligence activities, conducting site development feasibility assessments, natural resources inventories of existing flora and fauna, vernal pool studies and assessment, habitat evaluations, wetland delineations, wetland assessment, wetland mitigation design, wetland mitigation construction monitoring, permit compliance monitoring, site layout and design evaluations, erosion and sediment control planning and construction monitoring, vegetative soil stabilization and storm water management BMP evaluation and selection, preparation of technical documents, coordination with State and local agencies, and permitting support.

**Environmental Compliance Monitor, Structure Replacement Project, Montague/Leverett, Massachusetts**

Environmental Compliance Monitor in accordance with Massachusetts Department of Environmental Protection 401 Water Quality Certificate permit conditions for 345 kV structure replacement project. Monitoring included installation of wooden timber swamp mats across a 65-acre beaver impoundment for the removal of eight existing wooden structures and replacement with four steel structures. Environmentally sensitive compliance monitoring across this approximate 3,500 linear foot span included monitoring of drilling activities for deep caisson foundations within wetlands including in the middle of the beaver impoundment.



#### **Regulatory Permitting, Barbour Hill Substation Modifications, South Windsor, Connecticut**

Project Manager responsible for the preparation of a Petition to the Connecticut Siting Council for a determination that no Certificate of Environmental Compatibility and Public Need was required for the proposed modifications to the Barbour Hill Substation in South Windsor, Connecticut. The project included the replacement and expansion of an existing facility and the modification of line interconnections. Responsibilities included conducting natural resource inventories, wetland delineation, noise study, soil and groundwater sampling, property survey, preparation of site/civil design drawings, supporting graphics, photo-simulations, and local and state permit documents. Mr. Libertine also supported CL&P during its contractor selection process and developed a site-wide soil and water management plan for implementation during construction activities.

#### **Certificate of Environmental Compatibility and Public Need, Rood Avenue, Windsor, CT**

Task Manager responsible for the preparation of environmental sections of a Certificate of Environmental Compatibility and Public Need to the Connecticut Siting Council for the construction of a new substation. The project included the construction of a substation in wooded uplands with direct wetland impacts. Responsibilities included conducting natural resource inventories, wetland delineation, and local and state permit documents and coordination with the U.S. Army Corps of Engineers New England Division. The project also included the successful transplanting of pink lady-slippers (*Cypripedium acaule*).

#### **Regulatory Permitting, Barbour Hill Substation Modifications, South Windsor, CT**

Task Manager responsible for the preparation of a Petition to the Connecticut Siting Council for a determination that no Certificate of Environmental Compatibility and Public Need was required for the proposed modifications to the Barbour Hill Substation. The project included the replacement and expansion of an existing facility and the modification of line interconnections. Responsibilities included conducting natural resource inventories, wetland delineation, and local and state permit documents.

#### **Environmental Assessment and Constructability Review, Central Connecticut Reliability Project**

Project Scientist for natural resources inventory/assessment and construction evaluation along 35 miles of ROW corridor. Environmental tasks included Connecticut and federal wetland delineations, Army Corp of Engineers data plots, wetlands functions and values assessment, inventory of threatened and endangered species and critical habitats, biological surveys, and cover-type mapping. Once existing conditions were documented, a feasibility analysis was conducted to identify environmental and constructability conflicts associated with proposed new line installation and facility upgrades.

#### **Certificates of Environmental Compatibility and Public Need, Various Sites, Connecticut**

Has served as Task Manager in support of numerous Applications to the Connecticut Siting Council (CSC) for the permitting of new electrical substations throughout Connecticut. These projects require extensive site data collection and analysis including natural resources inventories of existing flora and fauna, habitat evaluations, wetland delineation and function/value analysis, site layout analysis and wetland impact evaluation, wetland mitigation, preparation of technical documents, coordination with State and local agencies, and permitting. Environmental monitoring services for adherence to the CTDEP's General Permit for Construction Activities were also provided.

#### **Environmental Permitting Services for Wireless Telecommunications Clients, New England & NY**

Task Manager for environmental due diligence and permitting services in support of various telecommunications clients throughout New England and New York. Mr. Gustafson has worked directly with the major licensed PCS carriers since 1997. Projects include due diligence and land use evaluations; preliminary site screenings; preparation of compliance documentation, environmental assessments and Memorandums of Agreement to fulfill NEPA requirements; wetland delineation, assessments, and mitigation; local, state and federal wetland permitting; vegetative/biological surveys; rare species investigations; floodplain compliance; preparation of regulatory applications (including SEQRA submissions); permit compliance monitoring; and permitting support. Mr. Gustafson has testified on behalf of telecommunications clients in front of local municipalities and the Connecticut Siting Council on over 100 applications and petitions.

#### **Telecommunications Carrier Wetland Compliance Program**

Project Manager for major telecommunications carrier's wetland compliance program. Responsible for wetland delineation, assessment, mitigation and alternatives analysis, habitat evaluations, vernal pool identification and assessment, design review for permit feasibility, and successful permitting of over 50 wireless telecommunications facilities with local wetland/conservation commissions in the Connecticut, Massachusetts, and Rhode Island market.

areas. Responsible for erosion and sediment control planning and construction monitoring for projects in Connecticut and Massachusetts that represent a potential to impact sensitive wetland resources during construction.

**National Retailer, Rocky Hill, CT**

Responsible for wetland permitting of a multi-tenant retail development resulting in significant unavoidable wetland impacts and the creation of a wetland mitigation area exceeding 1 acre in size. Wetland permits were secured from the Rocky Hill Wetland Agency, CTDEP and U.S. Army Corps of Engineers for wetland impacts and wetland mitigation area.

**Luxury Residential Development, Hartford, CT**

Project manager for an award-winning luxury residential community developer. Provided project management and technical direction for wetland compliance of projects undertaken in Connecticut including wetland determination, evaluation, mitigation design and local, state and Army Corps of Engineers permitting. Assisted with planning restoration of a failed slope that occurred during construction, secured approval from the local wetland commission and monitored erosion and sediment controls to ensure that nearby wetlands and perennial stream were not adversely impacted.

**Retail Wetland Program, Various Projects, CT**

Project manager for the Connecticut office for large retail Client Fee-for-Service and Turnkey Developer Programs. Provide project management and technical direction for wetland compliance of projects undertaken in Connecticut including wetland determination, evaluation, mitigation design and local, state and Army Corps of Engineers permitting.

**Connecticut DOT West Haven/Orange Railroad Station, Environmental Assessment**

Task manager for assessing natural resources, including wetlands, floodplain, aquatic habitats, and wildlife, associated with a proposed railroad station at one of two possible sites. Prepared technical documents in support of Draft Federal Environmental Assessment/Draft State Environmental Impact Evaluation.

**Wetlands Survey and Permitting, ConnDOT Maintenance Facility.**

Performed both a state and federal wetland survey and delineation in conjunction with the submission and successful obtainment of a CTDEP Inland Wetlands and Watercourses permit and 401 Water Quality Certifications to conduct remedial activities within and adjacent to existing floodplain wetlands.

.....

<b>Education</b>	B.S. University of Massachusetts, Plant and Soil Sciences, 1988  Graduate coursework, University of New Hampshire
<b>Affiliations</b>	Member, Lebanon Inland Wetlands and Watercourses Commission, since 1995.  Member, Connecticut Audubon Society
<b>Registration</b>	Professional Soil Scientist, Society of Soil Scientists of Southern New England, since 1988.  Connecticut Association of Wetland Scientists.  Association of Massachusetts Wetland Scientists.
<b>Certifications</b>	OSHA Hazardous Water Operations and Emergency Response (HAZWOPER) Training (29 CFR 1910.120)



Resume of: **Martin J. Lavin**      **65 Dartmouth Drive, Auburn, NH 03032**      **603-644-2820**

---

**SUMMARY:**      Over twenty-five years of experience in the RF and wireless communications industry.

**EXPERIENCE:**

**C Squared Systems, LLC**      **2008-Present**  
**Senior RF Engineer**

- Drive Test Services
- Intermodulation Studies
- RF Exposure Studies
- Advanced Wireless Services RF System Design
- Wireless Broadband Access Systems Engineering
- Zoning Hearing Support

**U.S. Cellular, Bedford, NH**      **2002-2008**  
**Senior RF Engineer**

- West Virginia / Maryland / Pennsylvania CDMA System Design and Optimization
- CDMA Capacity Planning and New Site Builds
- Subject Matter Expert for E-911, Public Safety Interference Issues, Colocation, and Technology Transitions

**Independent Wireless One (Sprint Network Affiliate), Londonderry, NH**      **2000-2002**  
**Senior RF Engineer**

- CDMA System Buildout in New Hampshire and Vermont
- Organized Field Office
- RF System Design and Site Selection Point of Contact with Site Acquisition and Construction
- Capacity Planning
- System Performance

**Nextel, Reston, VA**      **1999-2000**  
**Senior Manager – Technology Development**

- New Feature Development for the Motorola iDEN system
- Corporate RF Engineering Standards
- Evaluation of international and domestic spectrum acquisition opportunities

**USI, Chantilly, VA**  
**Program Manager**

1999

- Software development projects in Europe and U.S., including budget and schedule responsibility.
- Direct client contact for requirements gathering and proposal writing.

**LCC International, McLean, VA**  
**Manager of Engineering**

1991-1998

- Domestic and International Cellular & PCS System Design and Buildout
- FCC PCS Pioneer's Preference
- Strategic Planning for LCC Initial Public Offering
- Responsible for RF Design and Site Selection for Los Angeles MTA
- Wrote network equipment RFP for two PCS MTAs
- Software Product Manager for CellCAD, ANET, and MetroNET
- Managed Drive Test Services, including all Timesheet and Expense Approval

**Carl T. Jones Corporation / SAIC, Springfield, VA**  
**EMC/EMI Engineer**

1987-1991

- Test and Measurement consulting for FCC compliance
- Broadcast (AM-FM-TV) consulting

**EDUCATION:**

**University of New Hampshire – Whittemore School of Business and Economics**  
Master of Business Administration

**Rensselaer Polytechnic Institute**  
Bachelor of Science, Electrical Engineering

**Michael Libertine, LEP**  
**Director of Siting and Permitting**  
**All-Points Technology Corporation, P.C.**  
**3 Saddlebrook Drive, Killingworth, CT 06419**  
**860-663-1697                      860-983-5153**

### **General Background**

Mr. Libertine has over 22 years of professional experience in the environmental consulting field. His experience includes regulatory compliance and permitting for utility clients involving extensive interactions with the local, state and federal agencies; environmental assessments/impact statements for NEPA compliance; site assessments and field investigations for property transfers; remedial strategy development; environmental due diligence; Brownfields redevelopment projects; and remedial investigations at RCRA facilities as well as state and federally recognized hazardous waste sites. Mike is a Licensed Environmental Professional in Connecticut and has been Project Manager on over 1700 environmental site assessments and field investigations for property transfers throughout New England.

### **Employment History**

- Vanasse Hangen Brustlin, Inc., 54 Tuttle Place, Middletown, Connecticut
- Director, Environmental Services May 1997 to January 2012
- Atlantic Environmental Services, Inc./GEI Consultants, Colchester, Connecticut
- Project Manager/Team Leader, January 1991 to May 1997

### **Key Projects**

#### **Certificates of Environmental Compatibility and Public Need, Electrical Substations, Connecticut**

Project Manager in support of Applications to the CSC for the permitting of five new bulk power substations in Killingly, Guilford, Windsor, Waterford and Westport, Connecticut (2004 through 2012). These projects required extensive coordination of numerous team members, including client's in-house discipline managers and engineers, consultants, legal counsel, staff, and subcontractors. Mike was responsible for overseeing pre-acquisition environmental due diligence services, site survey, site data collection and analysis, site/civil layout, and drafting of municipal documents and the Application to the CT Siting Council. Services included conducting natural resources inventories of existing flora and fauna, habitat evaluations, wetland delineation, noise analyses, hazardous waste investigations, site layout and design drawings, landscape architecture, preparation of technical documents, coordination with State and local agencies, and permitting. Mike was also responsible for the preparation of Development and Management Plans to the Siting Council and providing environmental monitoring for adherence to the CTDEP's General Permit for Construction Activities and environmental requirements set forth in the Client's contract documents and specifications.

#### **Environmental Siting and Permitting Services, Electrical Utilities**

Program Manager in support of various electrical transmission projects, including assessment and permitting of bulk power substations, transmission line corridors, structures, and underground utility installations in CT and MA. Services include overseeing civil engineering feasibility studies, pre-acquisition due diligence evaluations, natural resources inventories of existing flora and fauna, habitat evaluations, wetland delineations, noise analysis, hazardous waste investigations, site survey, layout and design drawings, landscape architecture, visual analyses, preparation of technical documents, coordination with federal, state and local agencies, regulatory permitting, public outreach, and expert witness testimony. Mike has assisted clients in the siting, design and permitting of new bulk power substations, modifications to existing substations and switch yards, installing transition stations, as well as transmission line corridor studies submitted to the CT Siting Council.

**Environmental Evaluations and Regulatory Permitting, Wind Farm Colebrook, Connecticut**

Project Manager for environmental considerations associated with the development of Connecticut's first commercial wind farm in northwest Connecticut. Responsibilities included overseeing due diligence, natural resource studies and environmental permitting activities. The 3.2 MW project involved extensive evaluations of wetland and other natural resources, flora and fauna studies, sound studies, flicker analyses, visual evaluations and expert testimony at the local and state level, including multiple public hearings. Mike assisted this client in preparing the Development and Management Plan and pre-construction coordination efforts.

**Environmental Siting and Permitting Services, Fuel Cell Installation, South Windsor, CT**

Project Manager for environmental considerations associated with the development of a 4.98 megawatt fuel cell generation facility. Mike prepared an environmental assessment documenting existing environmental conditions at the site and the proposed project's impacts to water resources, vegetation and wildlife, rare species, historic and cultural resources, scenic and recreational areas, and other natural resources. Noise and air quality assessments were also included in the evaluation of how the proposed build conditions might affect the surrounding environment.

**Environmental Permitting Services for Wireless Telecommunications Clients, New England & NY**

Program Manager for environmental due diligence, siting and permitting services in support of various telecommunications clients throughout New England and New York. Mike has worked directly for licensed wireless service providers and tower management firms since 1997. Representative project-related services include due diligence and land use evaluations; preliminary site screenings; preparation of compliance documentation, environmental assessments and Memorandums of Agreement to fulfill NEPA requirements; Phase I ESAs and Phase II field investigations; remedial planning and oversight; wetland assessments; vegetative/biological surveys; noise analyses; visibility analyses; graphic support; preparation of regulatory permit applications, and construction support. Mr. Libertine has testified on behalf of telecommunications clients in front of local municipalities and the CT Siting Council on over 350 applications.

**Constructability Review, Greater Springfield Reliability Project, Massachusetts and Connecticut**

Project Manager responsible for assessing the environmental and construction feasibility associated with the installation of a new 345-kV overhead transmission line, as well as existing electric distribution and transmission infrastructure upgrades, within approximately 57 miles of existing transmission line right-of-way (ROW) in Massachusetts and Connecticut. Project tasks included assessing the suitability of existing access roads to and within the ROW to determine their viability as construction routes; evaluating new access roads, developing primary access routes, identifying appropriate locations for construction pads at each proposed structure location, developing data collection and management methodologies, and, providing a GIS geo-database and mapping depicting field data. Mike also assisted the client on environmental permitting and compliance-related issues associated with the reconfiguration of three substations along the route, two in MA and one in CT.

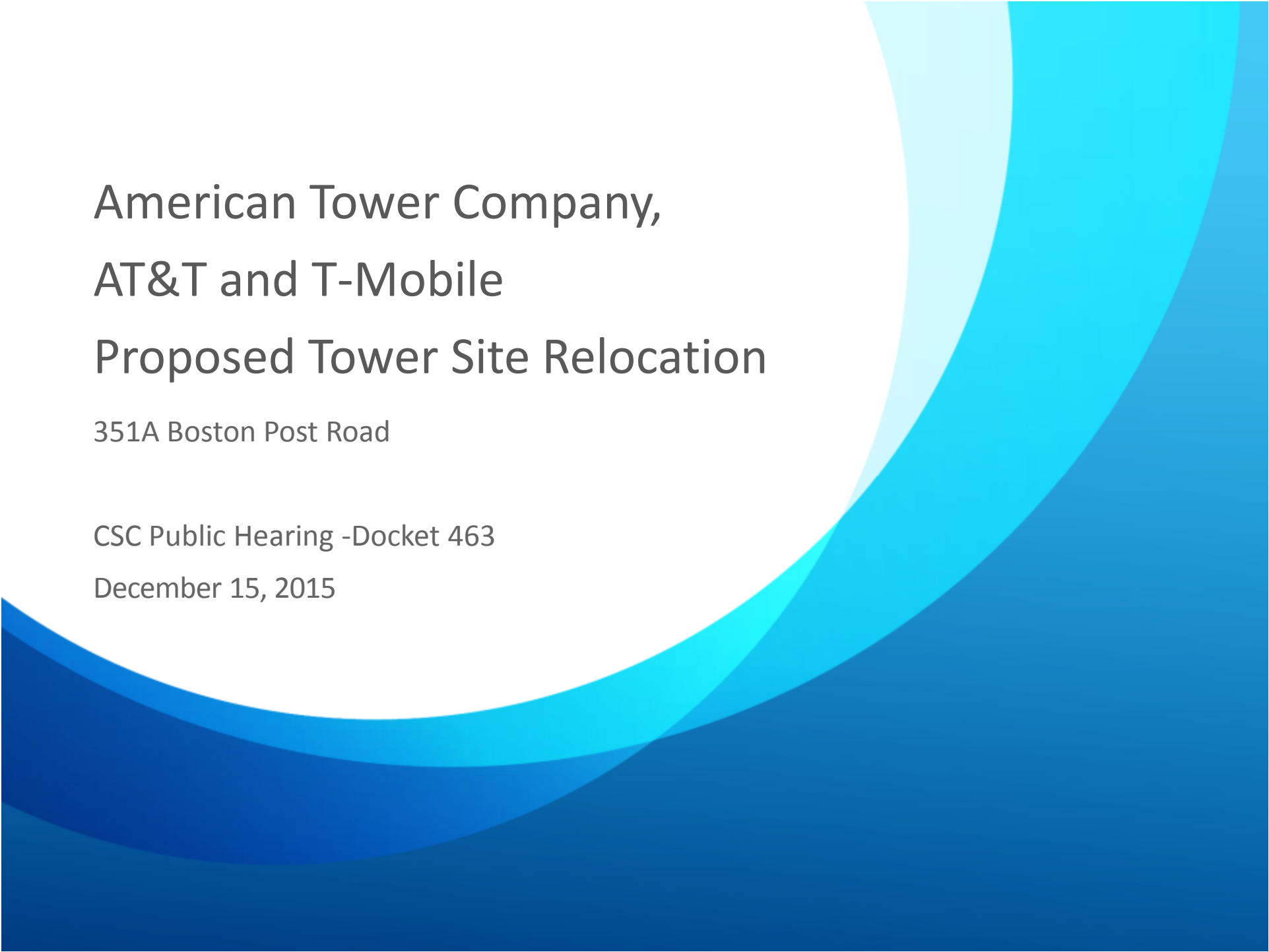
**Permitting Support Services, Interstate Reliability Project, Connecticut**

Project Manager responsible for preparing Location Review documents associated with the Card Street Substation upgrades and overhead transmission line interconnections in Lebanon, Connecticut. Project tasks included evaluations of environmental impacts, including wetland resources and wildlife habitat, roadway improvements, site design, landscaping and visual impacts. Mr. Libertine acted as liaison with local officials during the technical review process and assisted in securing letters of support from the First Selectman, Planning and Zoning and Inland Wetlands Commissions.

**Environmental Assessment and Constructability Review, Central Connecticut**

Project Manager for natural resources inventory/assessment and construction evaluation along 35 miles of ROW corridor. Environmental tasks included Connecticut and federal wetland delineations, Army Corp of Engineers data plots, wetlands functions and values assessment, inventory of threatened and endangered species and critical habitats, biological surveys, and cover-type mapping. Once existing conditions were documented, a feasibility analysis was conducted to identify environmental and constructability conflicts associated with proposed new line installation and facility upgrades.

ATTACHMENT 2

A decorative graphic consisting of several overlapping, curved bands of blue and cyan, creating a wave-like effect that flows from the bottom left towards the top right. The colors range from a deep navy blue to a bright cyan.

# American Tower Company, AT&T and T-Mobile Proposed Tower Site Relocation

351A Boston Post Road

CSC Public Hearing -Docket 463

December 15, 2015



## Project Professionals/Witnesses

Kelly Wade Bettuchi, AT&T Associate Director  
External & Government Affairs

Kevin Mason, AT&T Area Manager

Christopher Fisher, Cuddy & Feder, Counsel

Martin Lavin, C Squared, AT&T's RF Consulting  
Engineer

Dan Bilezikian, SAI, Site Acquisition Specialist

Jennifer Young Gaudet, Real Estate Specialist

Camilo Gaviria, Centek Engineering, Site Structural  
Engineer

Harry Rocheville, Centek Engineering, Site Civil  
Engineer

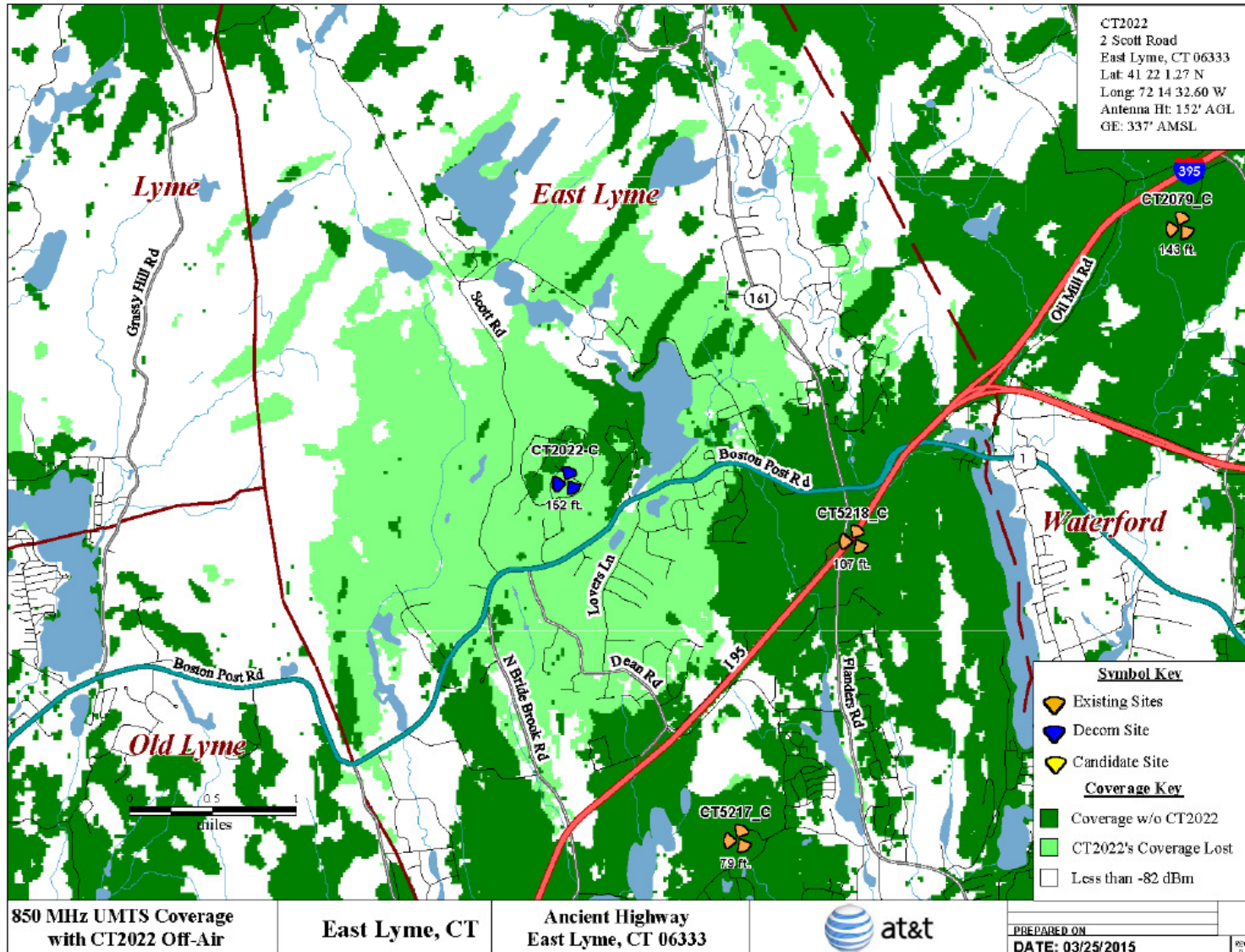
Mike Libertine, APT, Visual & Environmental  
Consultant

Dean Gustafson, APT, Professional Soil Scientist

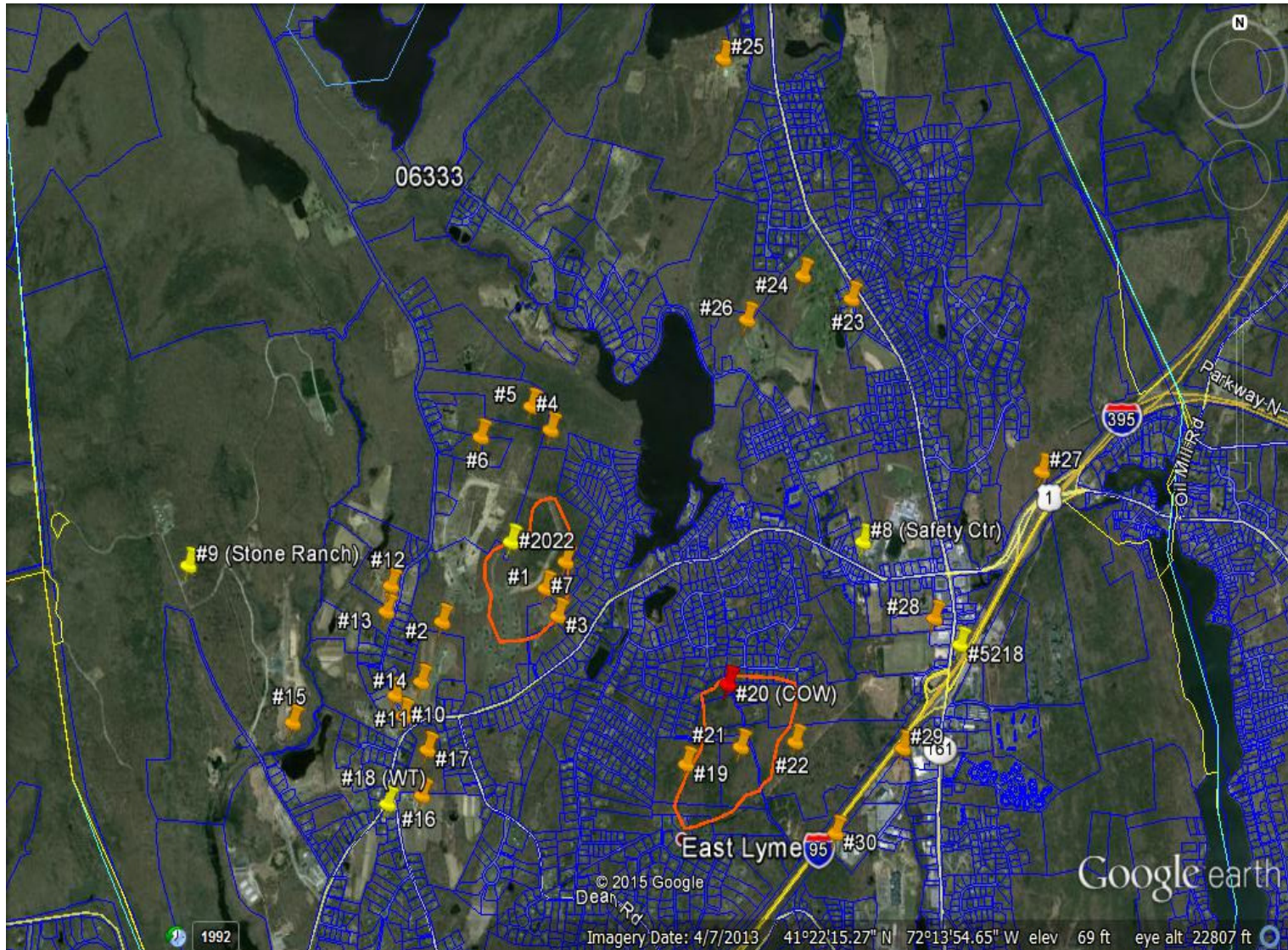
## Existing Tower Site – Approximately 30 Years in Service



# Scott Road Facility – Existing Coverage

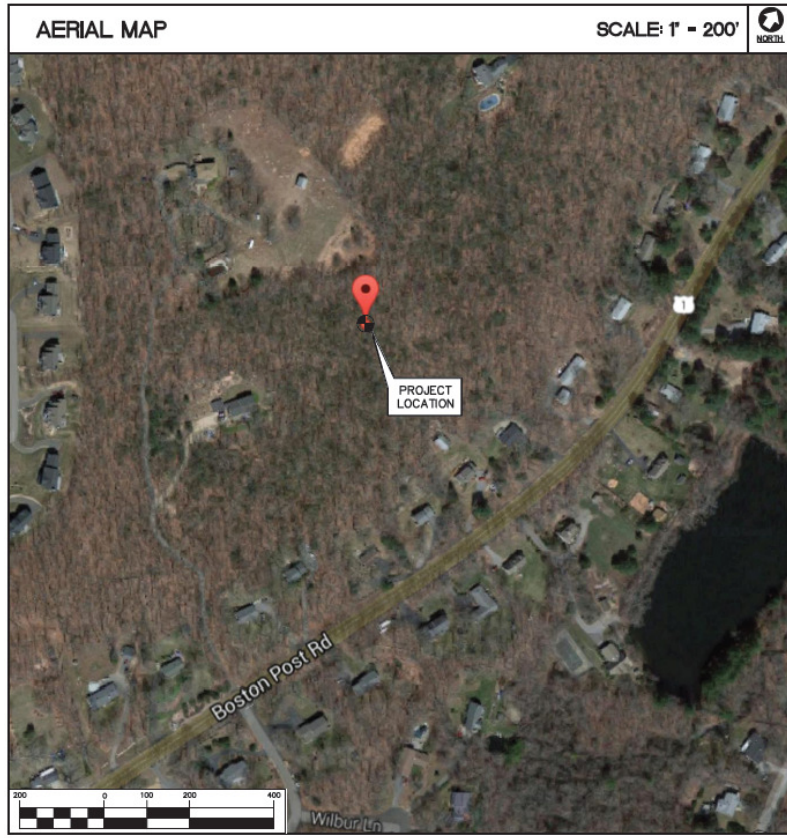


# Locations Evaluated for Tower Relocation



# Site Locations - Aerial Maps

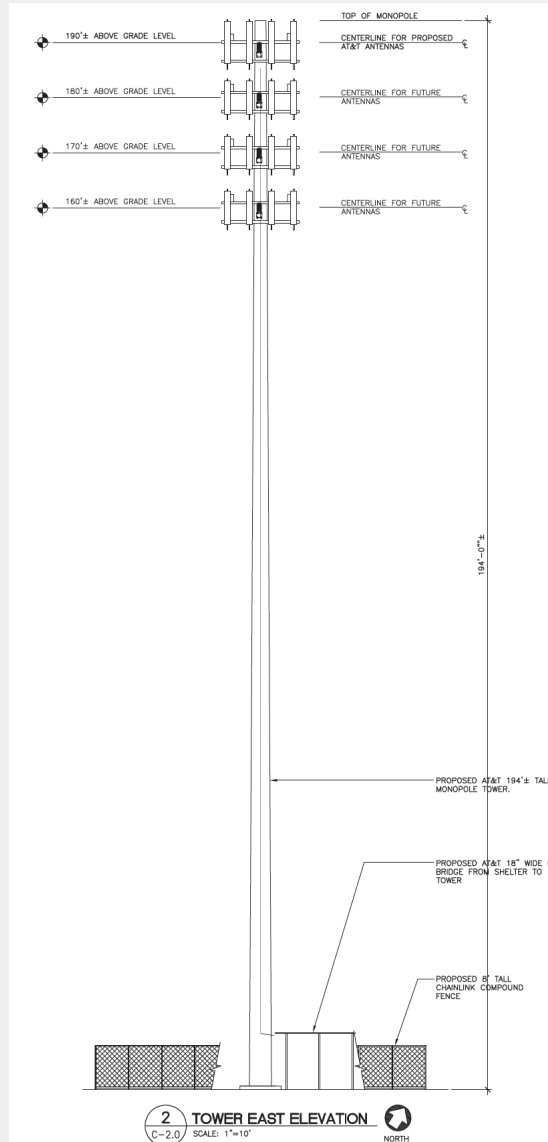
## Aerial Map Proposed Location



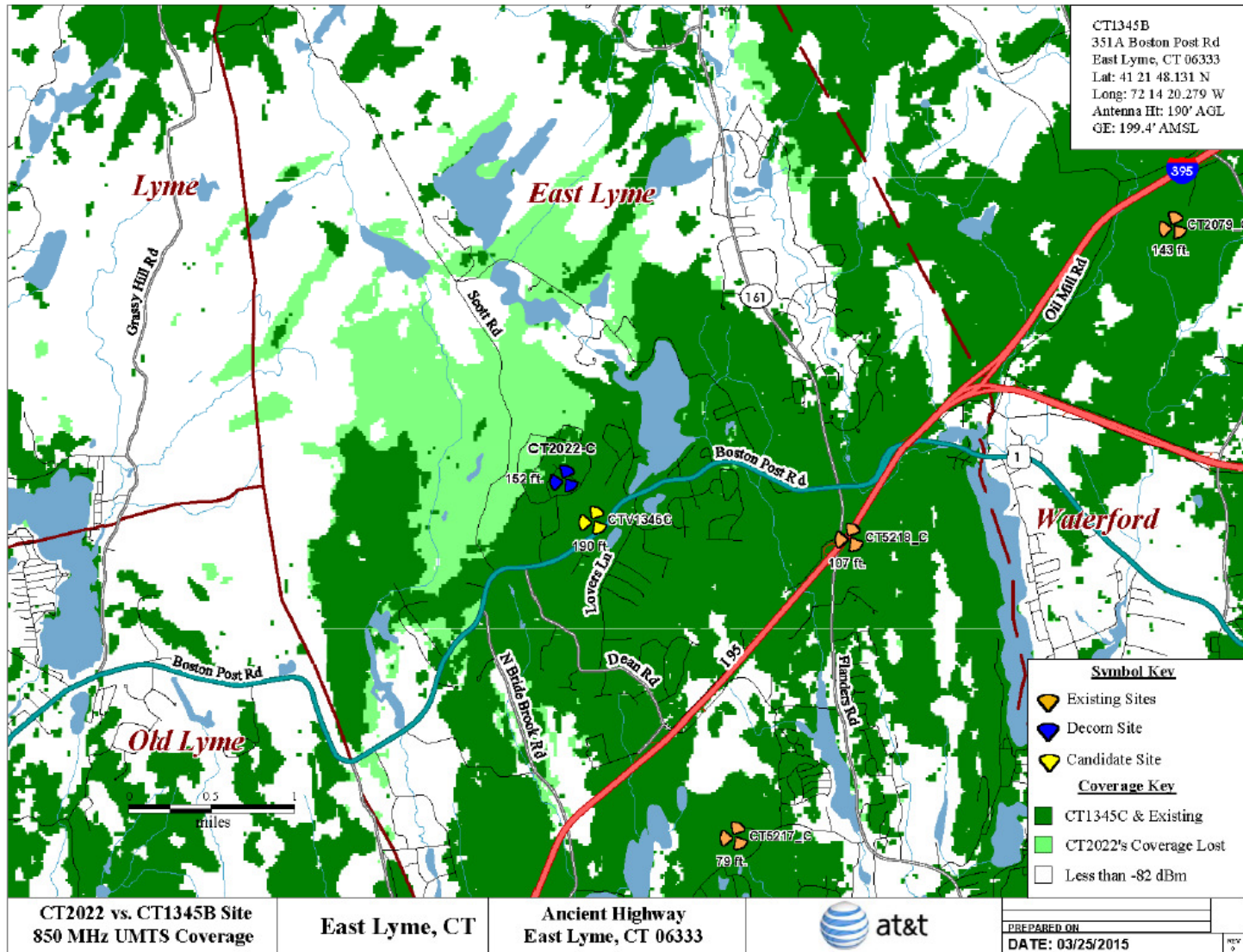
## Aerial Map Existing & Proposed



# Proposed Tower Elevation



# Existing vs. Proposed Coverage



Attachment 3: CT2022 vs. CT1345B Site 850 MHz UMTS Coverage

# Wireless Safety Analysis

Due to the directional nature of the proposed AT&T and T-Mobile antennas, the majority of the RF power is focused out towards the horizon. As a result, there will be less RF power directed below the antennas relative to the horizon, and consequently lower power density levels around the base of the tower. Please refer to the Attachment for the vertical patterns of the proposed AT&T and T-Mobile antennas. The calculated results below include a nominal 10 dB off-beam pattern loss to account for the lower relative gain directly below the antennas.

Location	Carrier	Vertical Distance to Antenna (Ft.)	Operating Frequency (MHz)	Number of Trans.	Effective Radiated Power (ERP) Per Transmitter (Watts)	Power Density (mw/cm <sup>2</sup> )	Limit	%MPE
Ground Level	AT&T UMTS	190	880	1	1028	0.0011	0.5867	0.19%
	AT&T UMTS	190	1900	1	1265	0.0013	1.0000	0.13%
	AT&T LTE	190	710	2	1254	0.0027	0.4733	0.56%
	AT&T LTE	190	880	1	1542	0.0016	0.5867	0.28%
	AT&T LTE	190	1900	3	1897	0.0060	1.0000	0.60%
	AT&T LTE	190	2300	1	2179	0.0023	1.0000	0.23%
	T-Mobile UMTS	180	1900	1	1706	0.0020	1.0000	0.20%
	T-Mobile GSM	180	1900	2	2558	0.0061	1.0000	0.61%
	T-Mobile UMTS	180	2100	1	1706	0.0020	1.0000	0.20%
	T-Mobile LTE	180	2100	1	3413	0.0041	1.0000	0.41%
<b>Total</b>								<b>3.42%</b>

**Summary:** Under worst-case assumptions, RF Power Density levels for the proposed AT&T and T-Mobile antenna arrays will not exceed 3.42%<sup>1</sup> of the FCC MPE limit for General Public/Uncontrolled Environments.



# East Lyme High School



**EXISTING**

PHOTO	LOCATION	ORIENTATION	DISTANCE TO SITE	VISIBILITY
1	EAST LYME HIGH SCHOOL	SOUTHWEST	+/- 1.47 MILES	NOT VISIBLE

# Chesterfield Road



**PROPOSED**

PHOTO	LOCATION	ORIENTATION	DISTANCE TO SITE	VISIBILITY
2	CHESTERFIELD ROAD	SOUTHWEST	+/- 1.65 MILES	YEAR ROUND

# Chesterfield Road



**PROPOSED**

PHOTO	LOCATION	ORIENTATION	DISTANCE TO SITE	VISIBILITY
3	CHESTERFIELD ROAD	SOUTHWEST	+/- 1.67 MILES	YEAR ROUND

# Maplewood Drive



PHOTO	LOCATION	ORIENTATION	DISTANCE TO SITE	VISIBILITY
5	MAPLEWOOD DRIVE	NORTHWEST	+/- 0.32 MILE	YEAR ROUND

# Mackinnon Place at Morris Lane



**PROPOSED**

PHOTO	LOCATION	ORIENTATION	DISTANCE TO SITE	VISIBILITY
6	MACKINNON PLACE AT MORRIS LANE	NORTHWEST	+/- 0.36 MILE	YEAR ROUND

# Parker Drive



**PROPOSED**

PHOTO	LOCATION	ORIENTATION	DISTANCE TO SITE	VISIBILITY
7	PARKER DRIVE	SOUTHWEST	+/- 0.65 MILE	YEAR ROUND

# Upper Pattagansett Road



**PROPOSED**

PHOTO	LOCATION	ORIENTATION	DISTANCE TO SITE	VISIBILITY
9	UPPER PATTAGANSETT ROAD	SOUTHWEST	+/- 1.07 MILES	YEAR ROUND

Thank you.

