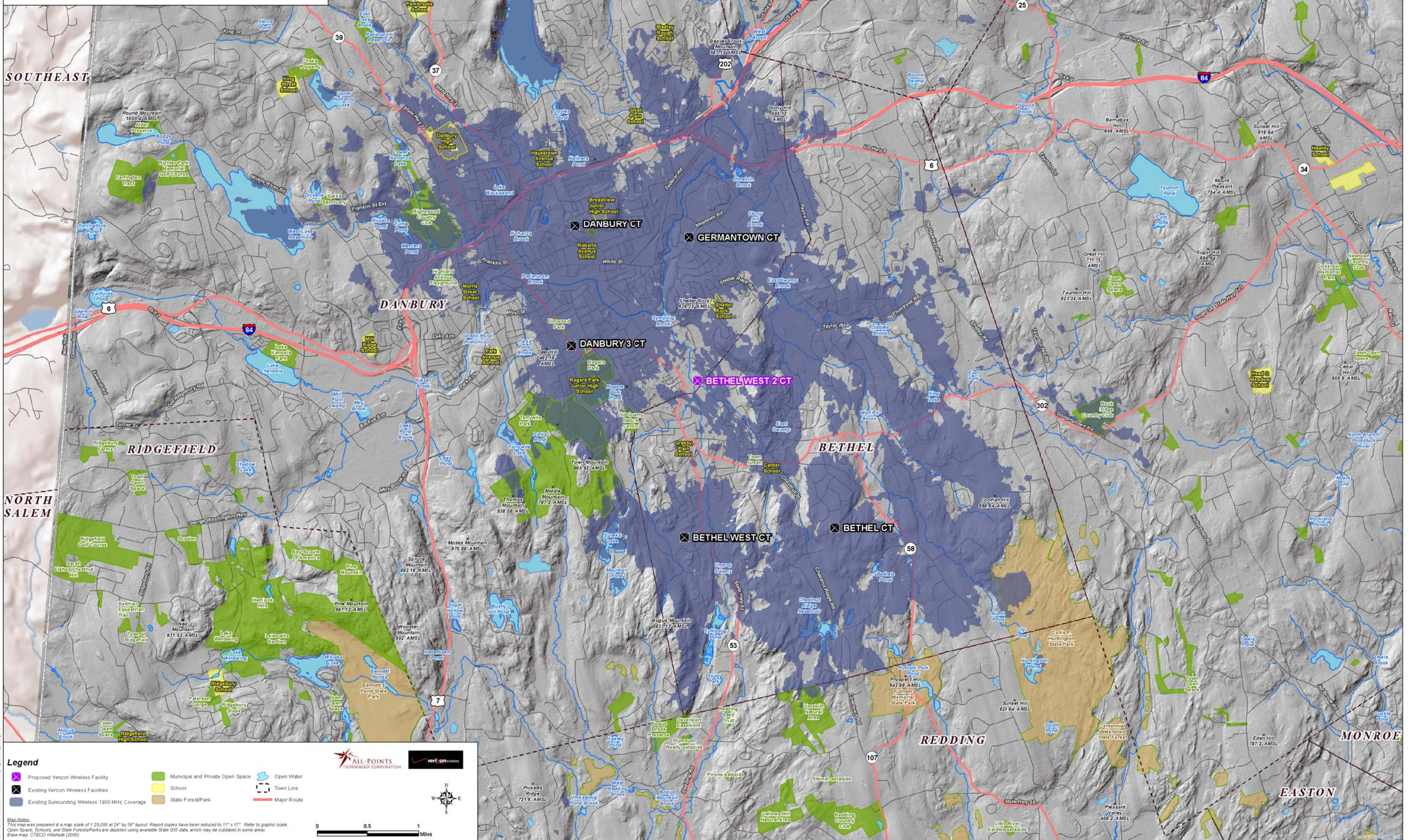


**Existing Verizon Wireless 1900 MHz Coverage
Danbury, Connecticut and Surrounding Area
(*Map Scale is 1:25,000)**

Coverage plot assumes 55% site loading on the Cellco system
Coverage is depicted at a signal threshold of -85 dBm



Legend

- ✖ Proposed Verizon Wireless Facility
- ✖ Existing Verizon Wireless Facilities
- Existing Surrounding Wireless 1900 MHz Coverage
- Municipal and Private Open Space
- School
- State Forest/Park
- Open Water
- Town Line
- Major Route

Map Notes:
This map was prepared at a map scale of 1:25,000 at 24" by 36" layout. Report copies have been reduced to 11" x 17". Refer to graphic scale. Open Space, Schools, and State Forest/Parks are depicted using available State GIS data, which may be updated in some areas. Base map: CTECO Hillshade (2000)

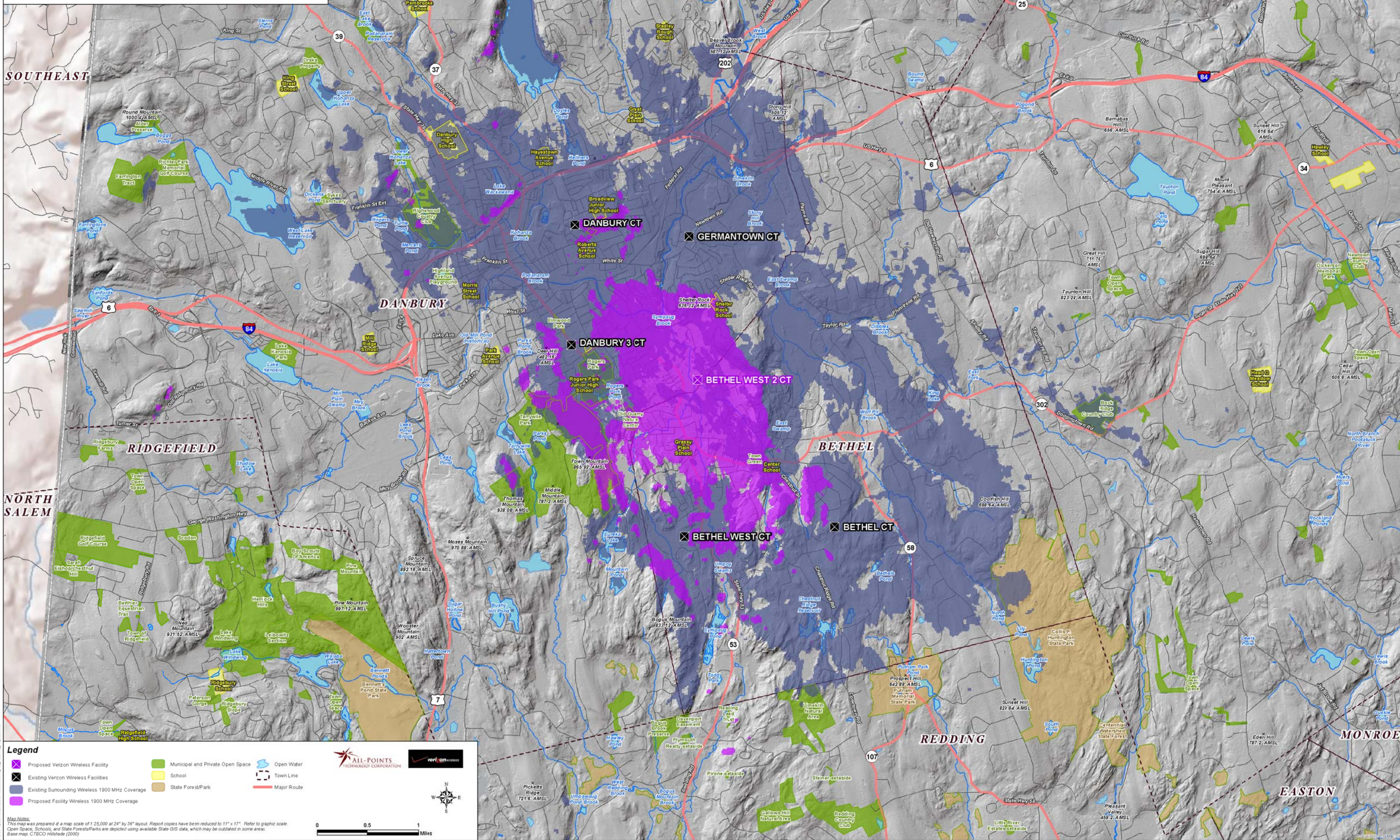
Scale: 0 0.5 1 Miles

Logos: ALL-POINTS TECHNOLOGY CORPORATION, verizon

© 2007 Verizon Wireless. All rights reserved. 07-000000-1. 1/07

**Proposed Verizon Wireless 1900 MHz Coverage
Danbury, Connecticut and Surrounding Area
(*Map Scale is 1:25,000)**

Coverage plot assumes 55% site loading on the Cellco system
Coverage is depicted at a signal threshold of -85 dBm



Legend

- X Proposed Verizon Wireless Facility
- X Existing Verizon Wireless Facilities
- Existing Surrounding Wireless 1900 MHz Coverage
- Proposed Facility Wireless 1900 MHz Coverage
- Municipal and Private Open Space
- School
- State Forest/Park
- Open Water
- Town Line
- Major Route

ALL-POINTS TECHNOLOGY CORPORATION

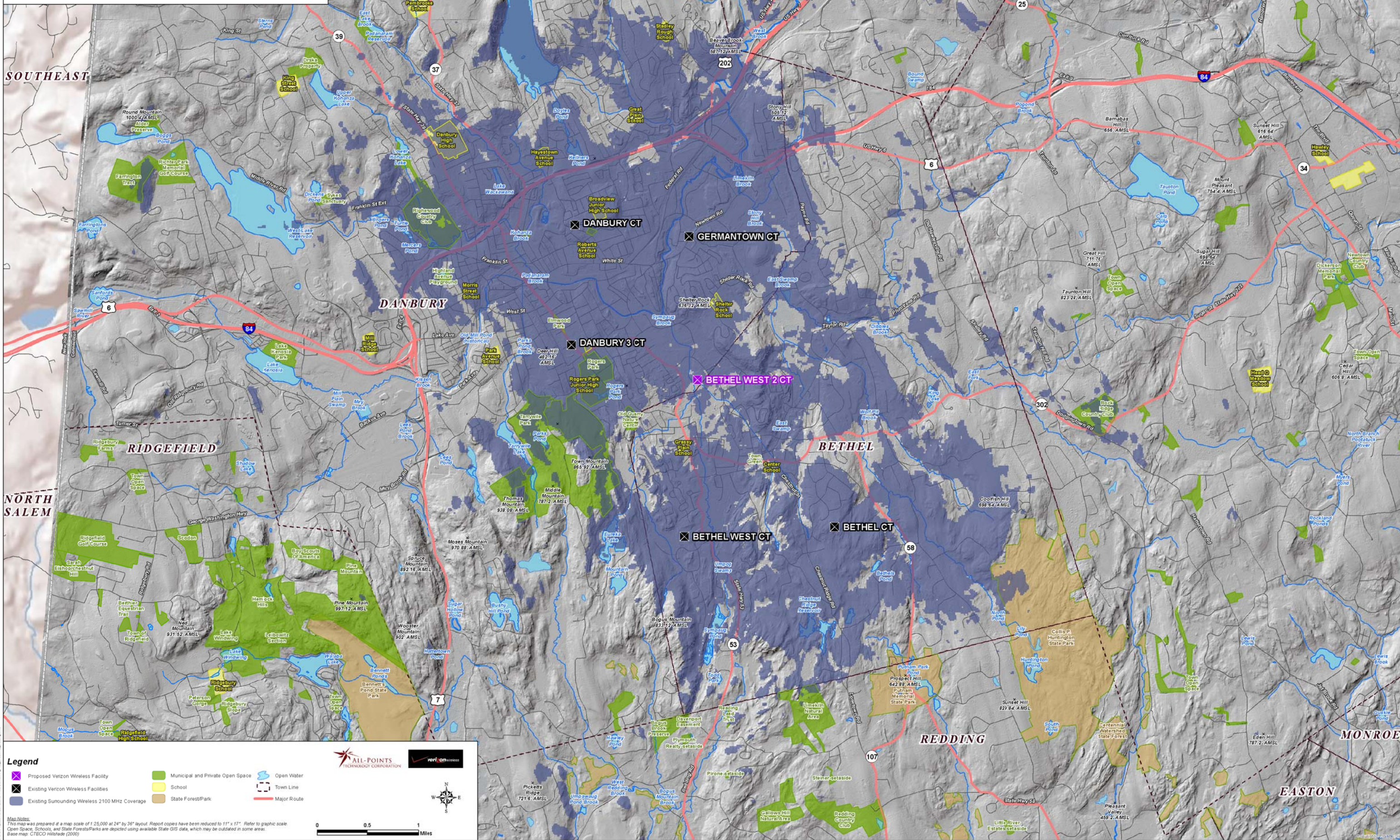
verizon

Map Notes:
This map was prepared at a map scale of 1:25,000 at 24" by 36" layout. Report copies have been reduced to 11" x 17". Refer to graphic scale.
Open Space, Schools, and State Forest/Parks are depicted using available State GIS data, which may be updated in some areas.
Base Map: CTECO Hillshade (2000)

0 0.5 1 Miles

**Existing Verizon Wireless 2100 MHz Coverage
Danbury, Connecticut and Surrounding Area
(*Map Scale is 1:25,000)**

Coverage is depicted at a signal threshold of 120 dB Operational Path Loss



Legend

- ✖ Proposed Verizon Wireless Facility
- ✖ Existing Verizon Wireless Facilities
- Existing Surrounding Wireless 2100 MHz Coverage
- Municipal and Private Open Space
- School
- State Forest/Park
- Open Water
- Town Line
- Major Route

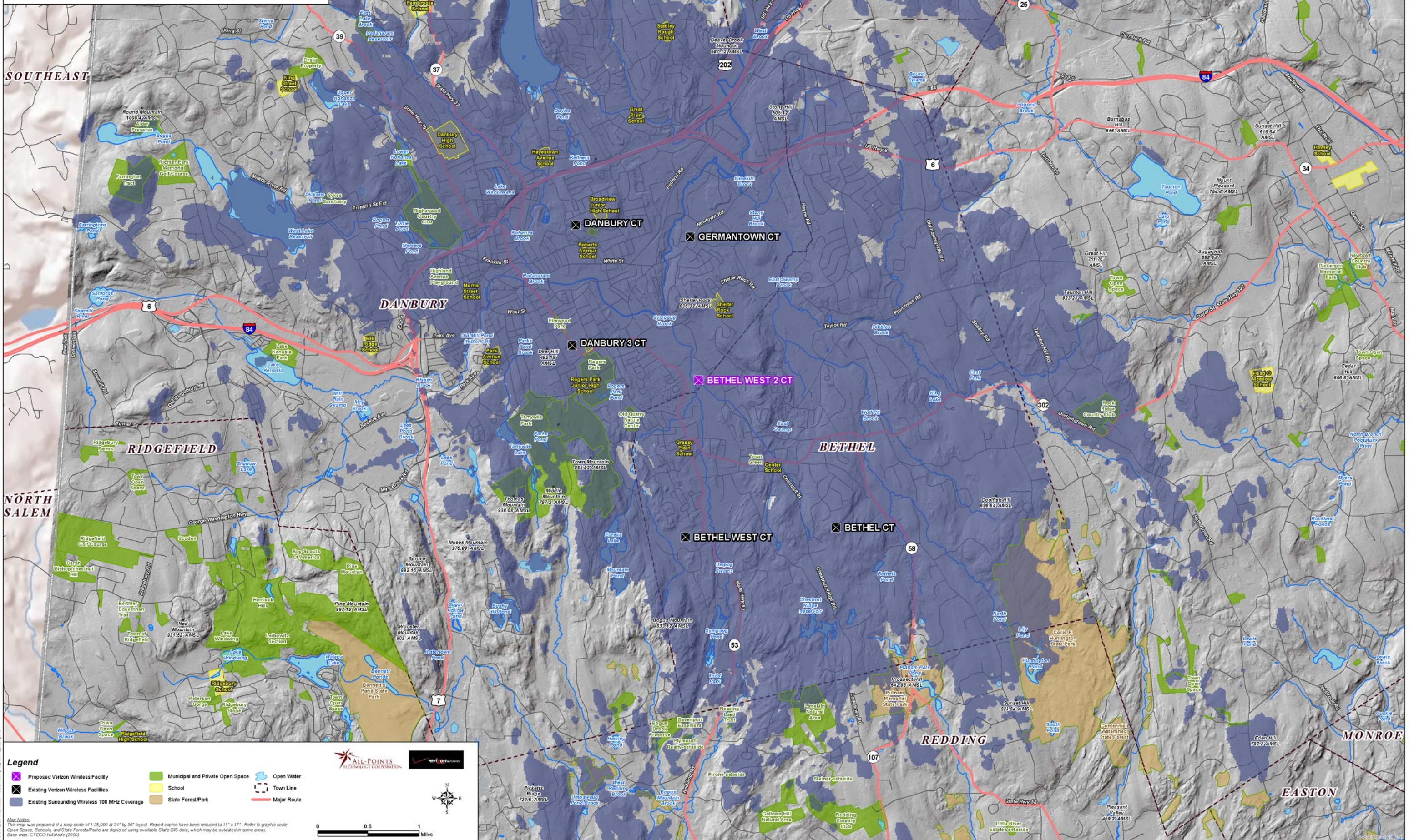
Map Notes:
This map was prepared at a map scale of 1:25,000 at 24" by 36" layout. Report copies have been reduced to 11" x 17". Refer to graphic scale. Open Space, Schools, and State Forest/Parks are depicted using available State GIS data, which may be updated in some areas. Base map: CTECO Hillshade (2000)

Scale: 0 0.5 1 Miles

Logos: ALL-POINTS TECHNOLOGY CORPORATION, verizon

**Existing Verizon Wireless 700 MHz Coverage
Danbury, Connecticut and Surrounding Area
(*Map Scale is 1:25,000)**

Coverage is depicted at a signal threshold of 120 dB Operational Path Loss



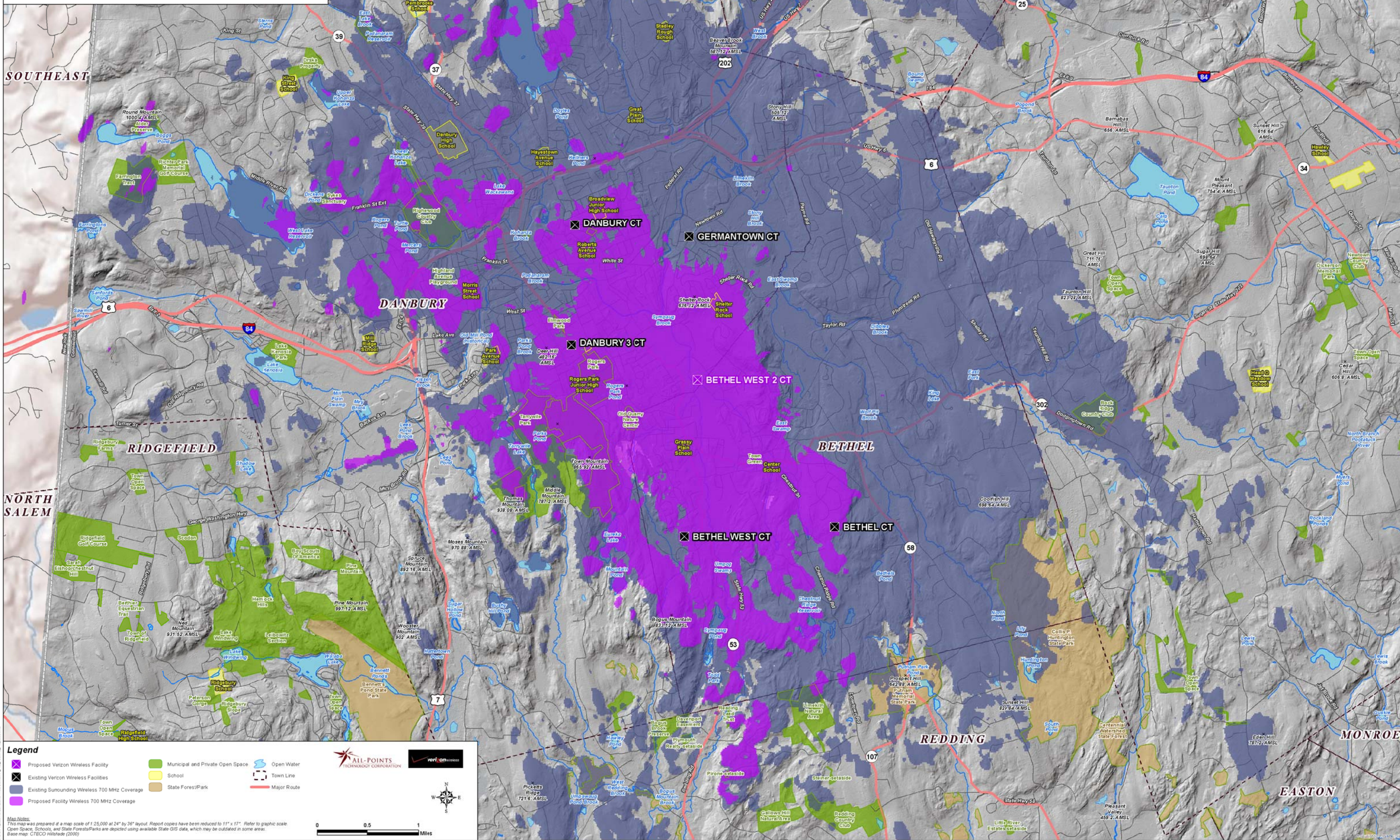
- Legend**
- X Proposed Verizon Wireless Facility
 - X Existing Verizon Wireless Facilities
 - Existing Surrounding Wireless 700 MHz Coverage
 - Municipal and Private Open Space
 - School
 - State Forest/Park
 - Open Water
 - Town Line
 - Major Route

Map Notes:
This map was prepared at a map scale of 1:25,000 at 24" by 36" layout. Report copies have been reduced to 11" x 17". Refer to graphic scale. Open Space, Schools, and State Forests/Parks are depicted using available State GIS data, which may be outdated in some areas. Base map: CTECO Hillshade (2000)

Copyright © 2009 Verizon Wireless. All rights reserved.

**Proposed Verizon Wireless 700 MHz Coverage
Danbury, Connecticut and Surrounding Area
(*Map Scale is 1:25,000)**

Coverage is depicted at a signal threshold of 120 dB Operational Path Loss

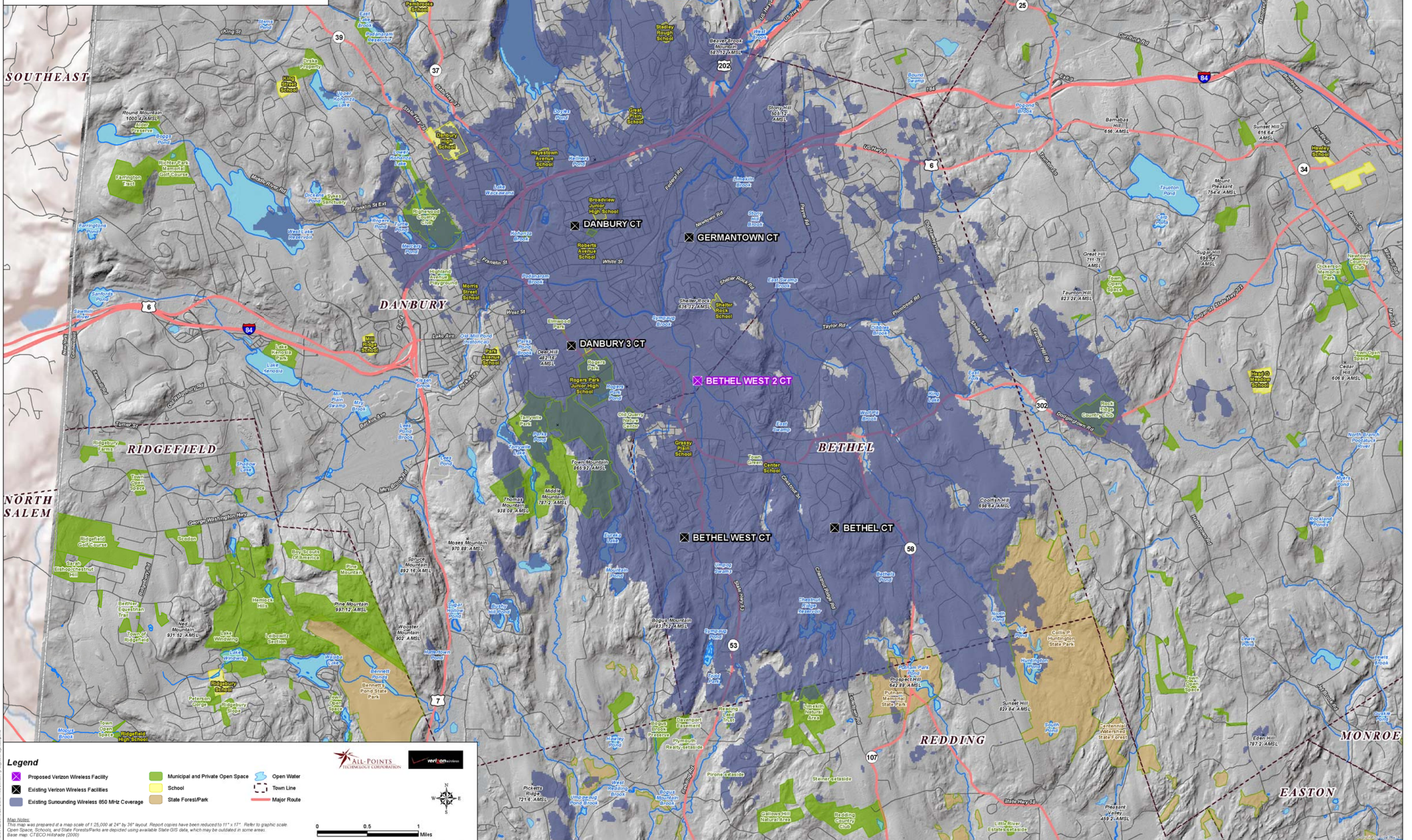


- Legend**
- Proposed Verizon Wireless Facility
 - Existing Surrounding Wireless 700 MHz Coverage
 - Proposed Facility Wireless 700 MHz Coverage
 - Municipal and Private Open Space
 - School
 - State Forest/Park
 - Open Water
 - Town Line
 - Major Route

Map Notes:
This map was prepared at a map scale of 1:25,000 at 24" by 36" layout. Report copies have been reduced to 11" x 17". Refer to graphic scale. Open Space, Schools, and State Forests/Parks are depicted using available State GIS data, which may differ in some areas. Base map: CTECO Hillshade (2000)

**Existing Verizon Wireless 850 MHz Coverage
Danbury, Connecticut and Surrounding Area
(*Map Scale is 1:25,000)**

Coverage plot assumes 55% site loading on the Cellco system
Coverage is depicted at a signal threshold of -85 dBm



- Legend**
- X Proposed Verizon Wireless Facility
 - X Existing Verizon Wireless Facilities
 - Existing Surrounding Wireless 850 MHz Coverage
 - Municipal and Private Open Space
 - School
 - State Forest/Park
 - Open Water
 - Town Line
 - Major Route

Map Notes:
This map was prepared at a map scale of 1:25,000 at 24" by 36" layout. Report copies have been reduced to 11" x 17". Refer to graphic scale.
Open Space, Schools, and State Forests/Parks are depicted using available State GIS data, which may be outdated in some areas.
Base map: CTECO Hillshade (2000)

