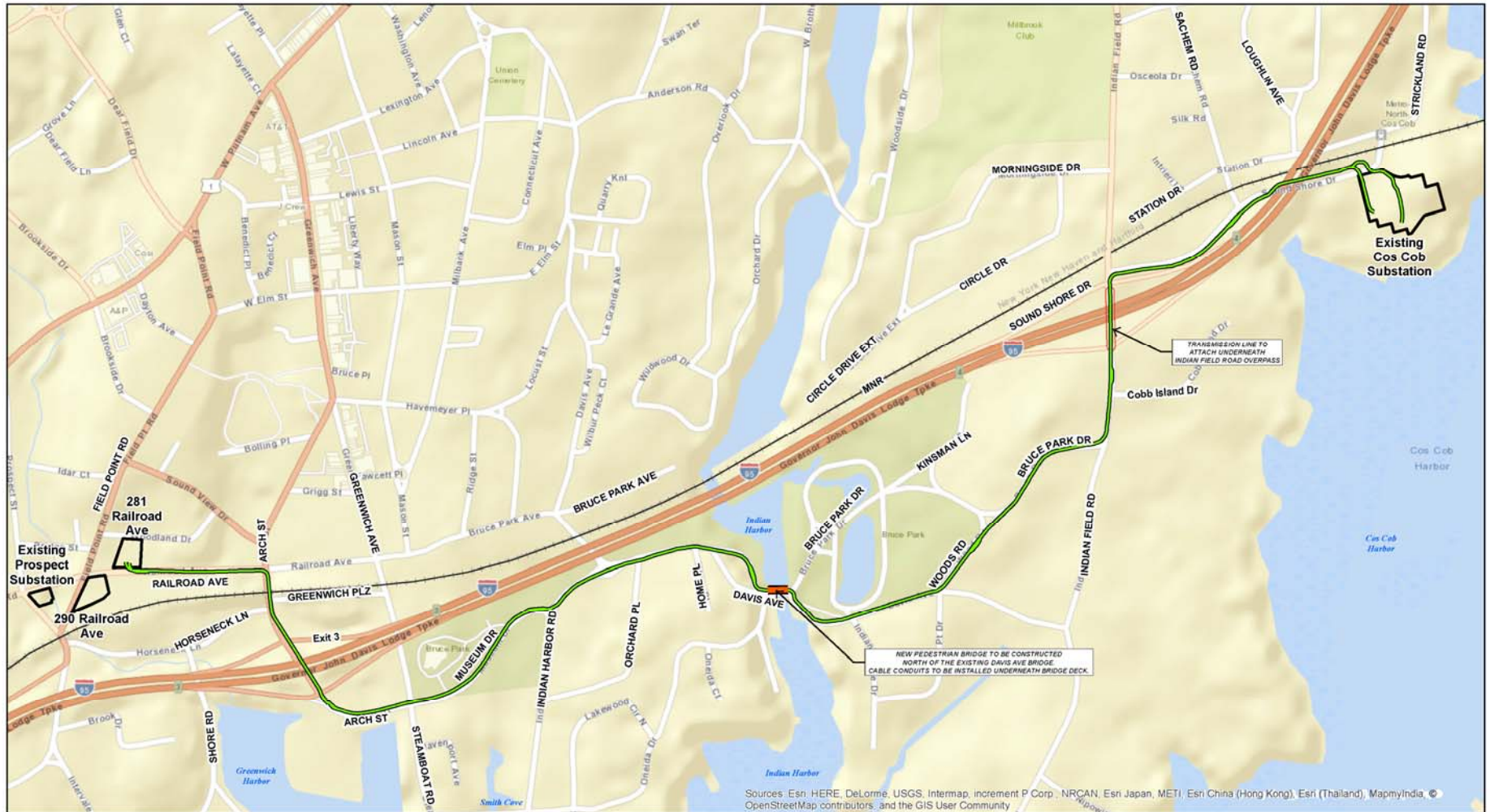




Docket 461A: Greenwich Substation and Line Project Public Comment Hearing

July 13, 2017

Project Currently Proposed



Sources: Esri, HERE, DeLorme, USGS, Intermap, increment P Corp., NRCAN, Esri Japan, METI, Esri China (Hong Kong), Esri (Thailand), MapmyIndia, OpenStreetMap contributors, and the GIS User Community

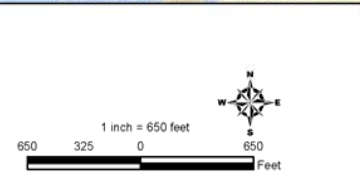


Legend

- Alternate Modified Route
- Proposed New Pedestrian Bridge
- Railroad

- 281 Railroad Ave
- 290 Railroad Ave
- Existing Cos Cob Substation Location
- Existing Prospect Substation Location

Base Map: ESRI Street Map



Alternate Modified Project Facilities Location

Greenwich Substation and Line Project
Greenwich, Connecticut

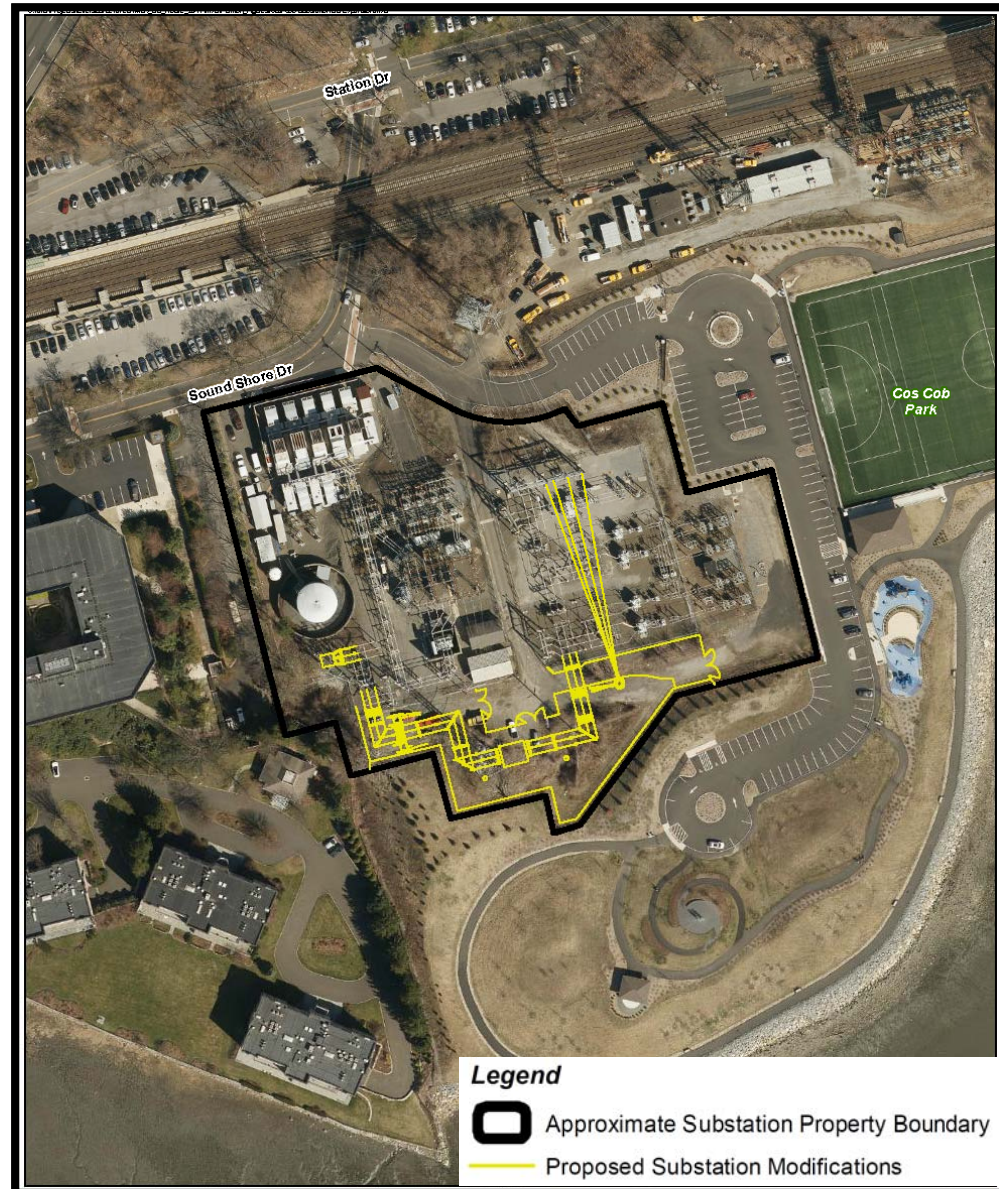
EVERSOURCE
ENERGY

ALL-POINTS
TECHNOLOGY CORPORATION

July 2017

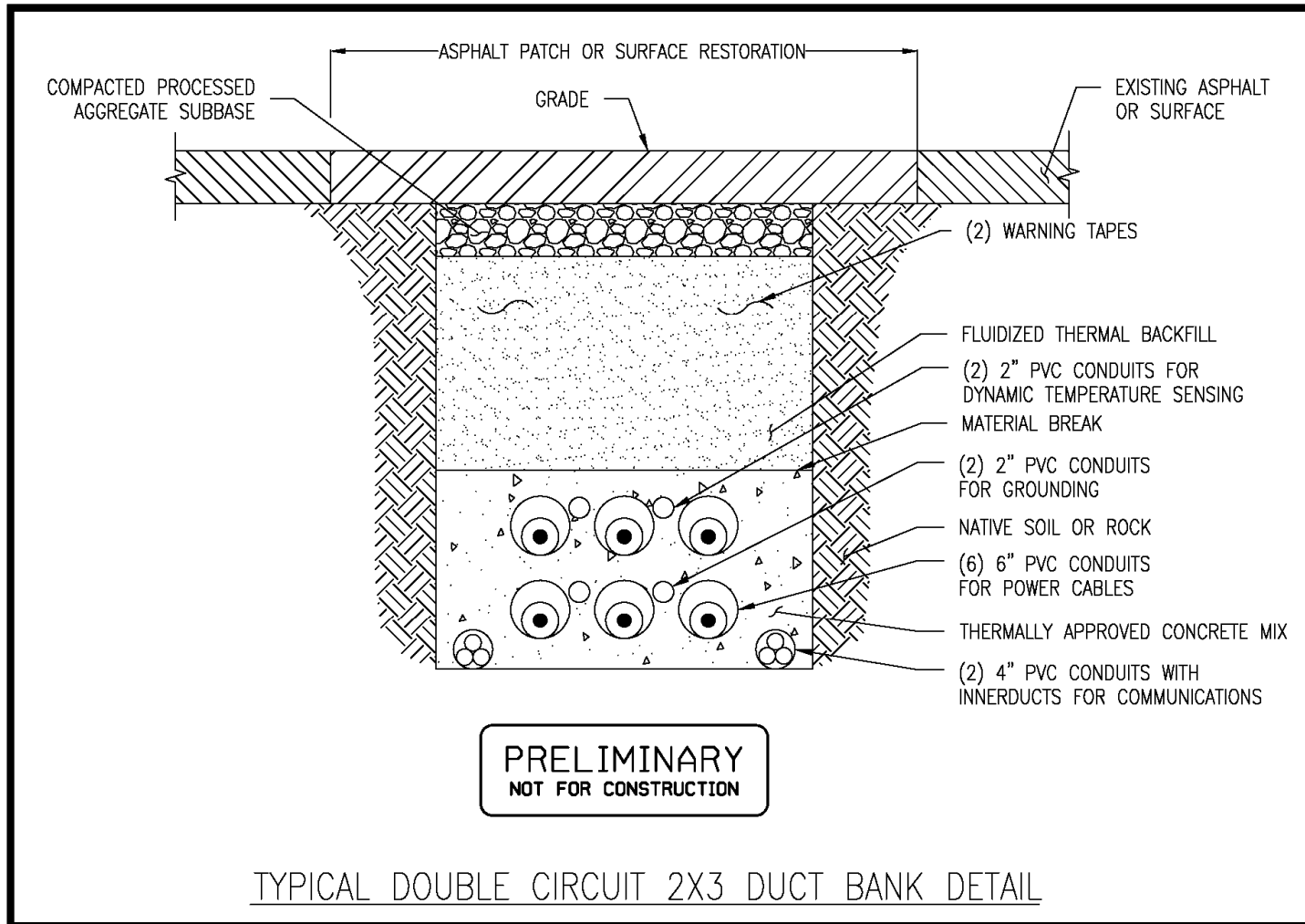
Proposed Cos Cob Substation Modifications

- Expansion of substation
- Install two new underground line connection points
- Replace one wood monopole and one lattice tower with one steel monopole within existing Cos Cob substation footprint

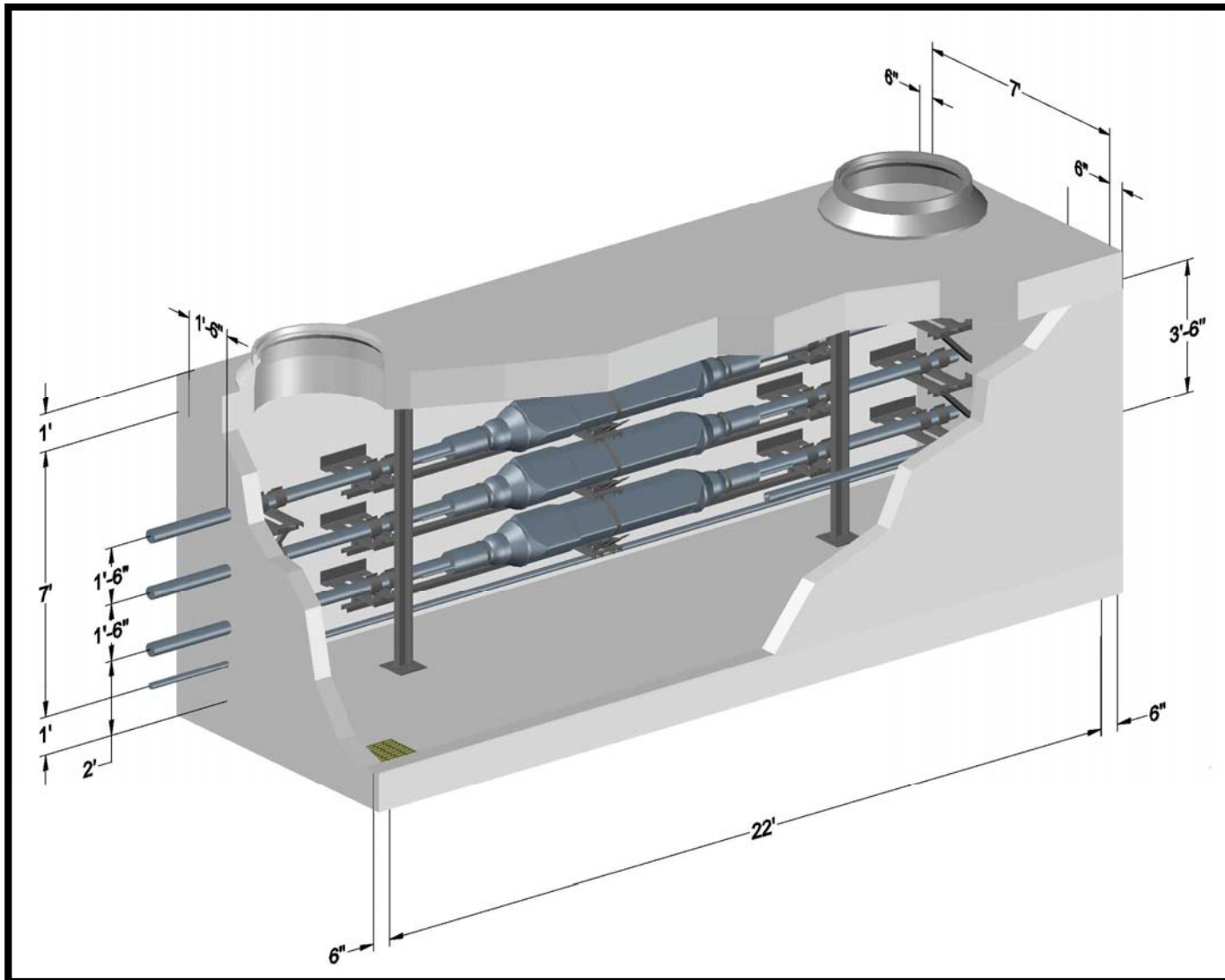


- ~2.4 miles of double circuit underground transmission cable with solid insulation between Cos Cob Substation and New Greenwich Substation on Railroad Ave.
- Transmission line would be placed beneath existing streets utilizing open trench construction
- 16 splice vaults at 8 different locations would be installed along the route

Typical Underground Duct Bank Cross Section

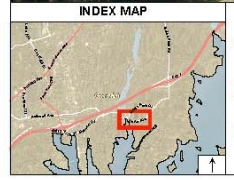


Typical Splice Vault



- Crossing of Indian Harbor
 - Pedestrian Bridge or;
 - Open trench utilizing a cofferdam
- Crossing of I-95 along Indian Field Road
 - Attachment to underside of Indian Field Road overpass
 - Would require ConnDOT approval
 - Trenchless Crossing
 - Would require ConnDOT approval

Indian Harbor Crossing



Legend

- Alternate Modified Route
- Proposed Splice Vault
- Proposed New Pedestrian Bridge
- Approximate Parcel Boundary
- Bruce Park

Base Map - 2016 Orthophotography (CTECCO Map Service)

1 inch = 100 feet

**Alternate Modified Project
Project Location
Bruce Park**

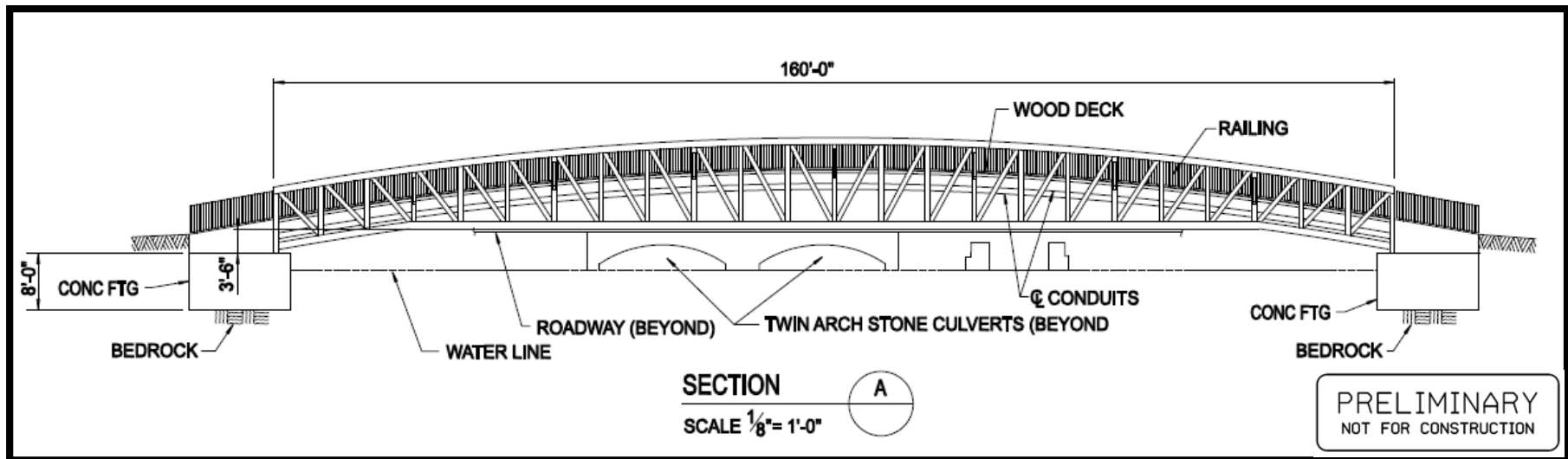
Greenwich Substation and Line Project
Greenwich, Connecticut

EVERSOURCE
ENERGY

ALL-POINTS
TECHNOLOGY CORPORATION

July 2017

Pedestrian Bridge



Crossing of I-95 - Variations



Substation Locations



Substation Enclosed by 15 ft. Brick Veneer Wall (290 RR Ave)

View From Intersection of Railroad Avenue and Field Point Road



Substation Enclosed by Building (281 RR Ave)

View From Railroad Avenue



Substation Enclosed by Building (281 RR Ave)

View Point From Woodland Drive



Project Comparison

	Original GSLP	Project Currently Proposed
Transmission Line	<ul style="list-style-type: none"> Type: All-UG Length: 2.3 miles Cable Type: HPFF (fluid filled) Splice Vault Locations: 7 	<ul style="list-style-type: none"> Type: All-UG Length: 2.4 miles Cable Type: XLPE (solid insulation) Splice Vault Locations: 8
Cos Cob Substation	<ul style="list-style-type: none"> Expansion of substation to South 	<ul style="list-style-type: none"> Same as Original
New Greenwich Substation	<ul style="list-style-type: none"> Location: 290 RR Ave Design: GIS all-enclosed Breaker Quantity: 6 Transformer Quantity: 3 Removal of Byram substation 	<ul style="list-style-type: none"> Location: 281 or 290 RR Ave Design: Open Air or All-enclosed Breaker Quantity: 1 Transformer Quantity: 2
Estimated Cost	~\$140M	~\$95M - 105M