



STATE OF CONNECTICUT

CONNECTICUT SITING COUNCIL

Ten Franklin Square, New Britain, CT 06051

Phone: (860) 827-2935 Fax: (860) 827-2950

E-Mail: siting.council@ct.gov

www.ct.gov/csc

June 19, 2015

TO: Council Members

FROM: Melanie Bachman, Acting Executive Director *MB*

RE: **DOCKET NO. 459** – Message Center Management and New Cingular Wireless PCS, LLC (AT&T) application for a Certificate of Environmental Compatibility and Public Need for the construction, maintenance, and operation of a telecommunications facility located at Glastonbury Tax Assessor Map E3, Block 0820, Lot E0002, Seven J's Farm, Candlewood Road, Glastonbury, Connecticut.

The Connecticut Siting Council has scheduled a field review for this docket for Tuesday, June 30, 2015 at 2:00 p.m. Council members will meet at the site accessed from Candlewood Road.

A public hearing is scheduled for Tuesday, June 30, 2015, beginning at 3:00 p.m. and continued at 7:00 p.m. in the Council Chambers at the Glastonbury Town Hall, 2155 Main Street, Glastonbury.

A map and directions are enclosed.

MB/MP/cm

Enclosures

- c: Secretary of the State (via e-mail service)
- Parties and Intervenors (via e-mail service)
- BCT Reporting LLC (via e-mail service)
- Tech Theatrical Services, LLC (via e-mail service)

DIRECTIONS - DOCKET 459 – GLASTONBURY

TO: Proposed Tower Site – Glastonbury Tax Assessor Map E3, Block 0820, Lot E0002, Seven J's Farm, Candlewood Road, Glastonbury a/k/a 541 Griswold Street

Via I-91 North (for points south of Wethersfield/Glastonbury area)

Take Exit 25 (Route 3 North) off of I-91 North.
Proceed on Route 3 North for about 1.8 miles.
Take exit towards Main Street/Glastonbury Blvd.
At the end of the exit ramp, turn left onto Glastonbury Blvd.
Proceed on Glastonbury Blvd for about 0.4 miles.
Glastonbury Blvd becomes Griswold Street.
Continue straight on Griswold Street for about 1.2 miles.
Turn left onto Candlewood Road.
Proceed straight less than 0.1 miles.
Turn right at the Applicant's sign into the access drive to the site.

Via I-91 South (for points North of the Hartford area)

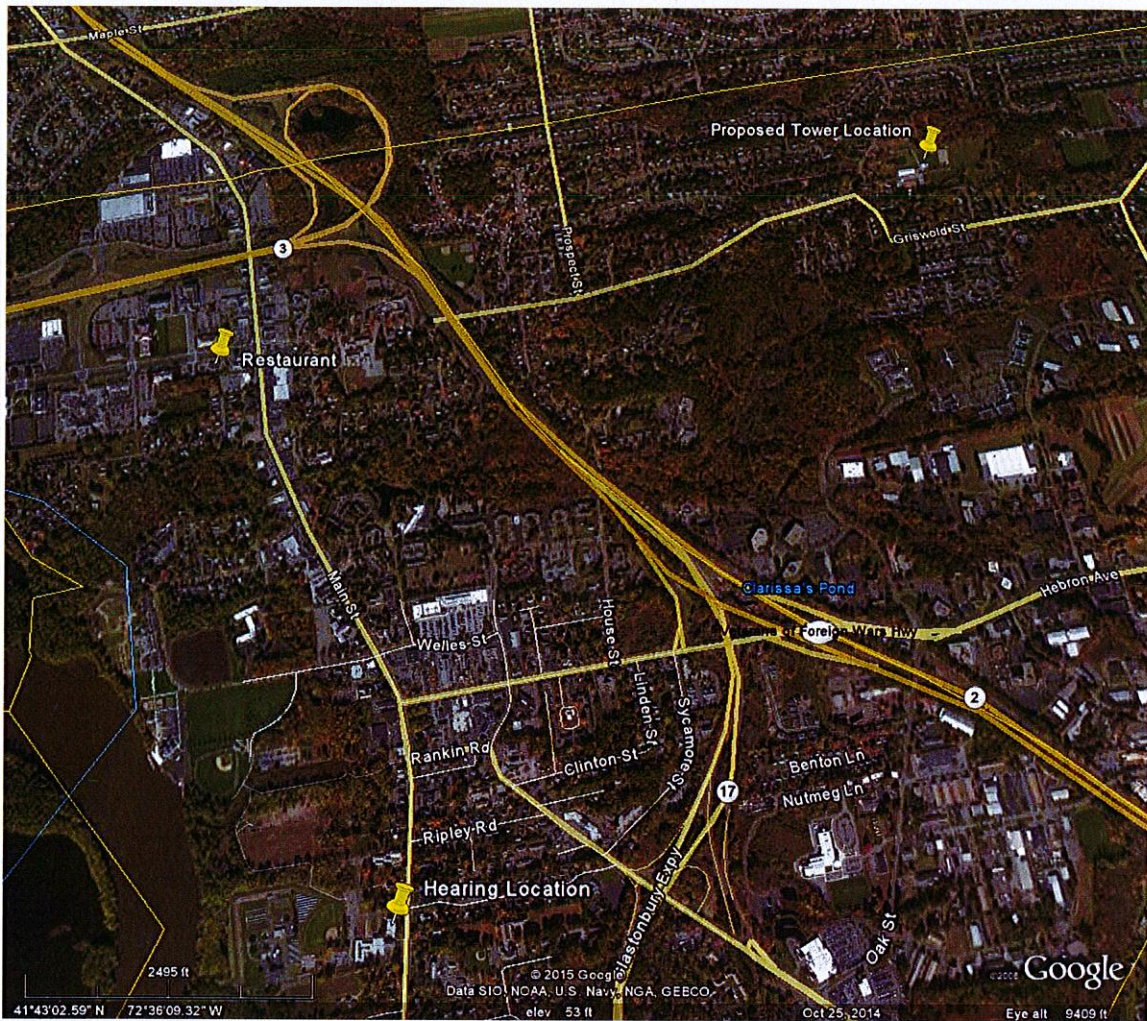
Take I-91 South to I-84 East.
Take I-84 East to Route 2 East.
Follow Route 2 East directions listed below.

Via Route 2 East (from points west or northwest of Glastonbury)

Proceed on Route 2 East.
Take Exit 6 (Griswold Street) off of Route 2 East.
At the end of the exit ramp, turn left onto Griswold Street.
Proceed on Griswold Street for about 0.9 miles.
Turn left onto Candlewood Road.
Proceed on Candlewood Road for about 0.1 miles.
Turn right at the Applicant's sign into the access drive to the site.

Via Route 2 West (from points east or southeast of Glastonbury)

Take Exit 8 (Route 94/Hebron Avenue) off of Route 2 West.
At the end of the exit ramp, turn right onto Oak Street.
Take first right onto Hebron Avenue (Route 94).
Proceed on Hebron Avenue (Route 94) for about 0.8 miles.
Turn left onto Addison Road.
Proceed on Addison Road for about 0.8 miles.
Turn left onto Griswold Street.
Proceed on Griswold Street for about 0.5 miles.
Turn right onto Griswold Street (to stay on Griswold Street).
Continue on Griswold Street for about 0.1 miles.
Turn right onto Candlewood Road.
Proceed on Candlewood Road for about 0.1 miles.
Turn right at the Applicant's sign into the access drive to the site.



TO: Glastonbury Town Hall, Council Chambers, 2155 Main Street, Glastonbury

Via I-91 North (for points south of Wethersfield/Glastonbury area)

Take Exit 25 (Route 3 North) off of I-91 North.
Proceed on Route 3 North for about 1.8 miles.
Take exit towards Main Street/Glastonbury Blvd.
At the end of the exit ramp, turn left onto Glastonbury Blvd.
Proceed on Glastonbury Blvd for about 0.33 miles.
Turn right onto Main Street.
Proceed on Main Street for about 1.1 miles.
The Town Hall is located on the right at 2155 Main Street.

Via I-91 South (for points North of the Hartford area)

Take I-91 South to I-84 East.

Take I-84 East to Route 2 East.

Follow Route 2 East directions listed below.

Via Route 2 East (from points west of Glastonbury)

Proceed on Route 2 East.

Take Exit 8 (Hebron Avenue towards Glastonbury Center) off of Route 2 East.

At the end of the exit ramp, turn right onto Hebron Avenue.

Proceed on Hebron Avenue for about 0.5 miles.

Turn left onto Main Street.

Proceed on Main Street for about 0.4 miles.

The Town Hall is on the right at 2155 Main Street.

Via Route 2 West (from points east of Glastonbury)

Take Exit 8 (Route 94/Hebron Avenue) off of Route 2 West.

At the end of the exit ramp, turn right onto Oak Street.

Take first right onto Hebron Avenue (Route 94).

Proceed on Hebron Avenue (Route 94) for about 0.8 miles.

Turn left onto Addison Road.

Proceed on Addison Road for about 0.8 miles.

Turn left onto Griswold Street.

Proceed on Griswold Street for about 0.5 miles.

Turn right onto Griswold Street (to stay on Griswold Street).

Continue on Griswold Street for about 0.1 miles.

Turn right onto Candlewood Road.

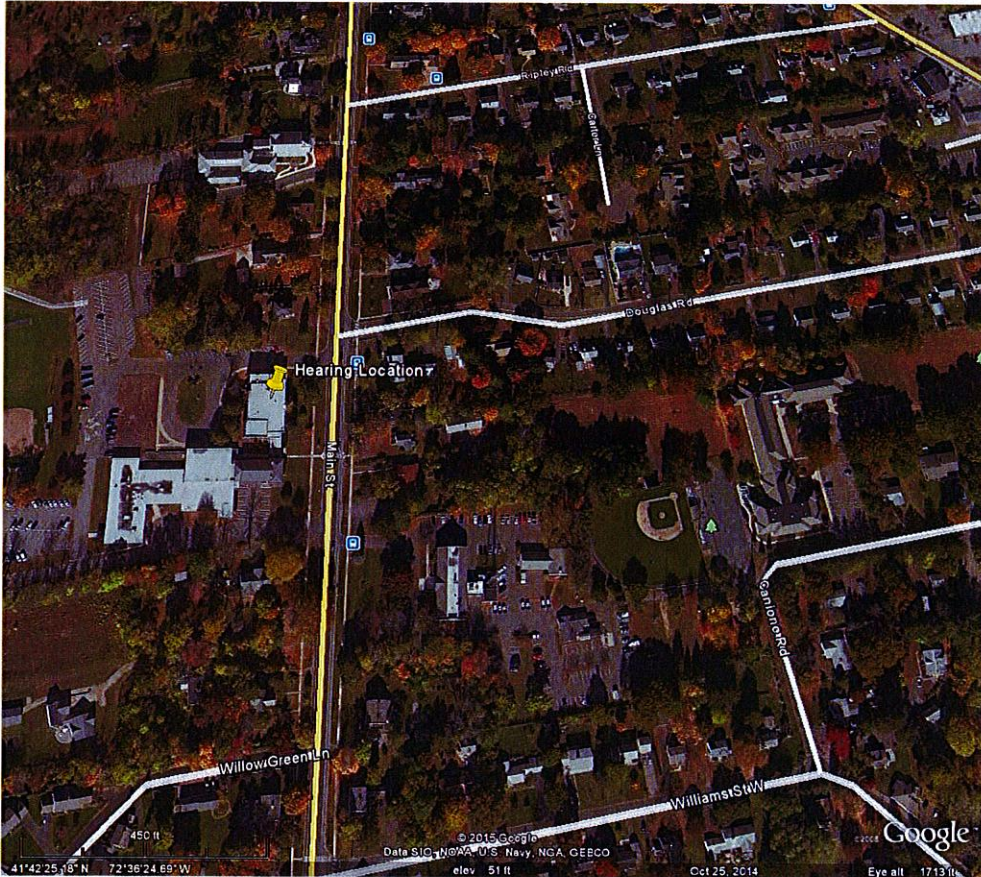
Proceed on Candlewood Road for about 0.1 miles.

Turn right at the Applicant's sign into the access drive to the site.

To Hearing Location: Glastonbury Town Hall, Council Chambers, 2155 Main Street, Glastonbury

From Site: off Candlewood Road, Glastonbury

Turn left onto Candlewood Road.
Proceed on Candlewood Road for about 0.1 miles.
Turn right onto Griswold Street.
Proceed on Griswold Street for about 1.25 miles.
Turn left onto Main Street.
Proceed on Main Street for about 1.1 miles.
The Glastonbury Town Hall is on the right.



TO RESTAURANT:

Maggie McFly's Restaurant, 40 Glastonbury Boulevard, Glastonbury

FROM HEARING LOCATION:

Glastonbury Town Hall, 2155 Main Street, Glastonbury

Turn left onto Main Street.

Proceed on Main Street for about 1.1 miles.

Turn left onto Glastonbury Blvd.

Maggie McFly's is the second building on the left.

