



EXISTING

PHOTO

18

LOCATION

TODD HOLLOW ROAD

ORIENTATION

SOUTHWEST

DISTANCE TO SITE

+/- 0.25 MILE

VISIBILITY

YEAR ROUND





PROPOSED

PHOTO

18

LOCATION

TODD HOLLOW ROAD

ORIENTATION

SOUTHWEST

DISTANCE TO SITE

+/- 0.25 MILE

VISIBILITY

YEAR ROUND





EXISTING

PHOTO

19

LOCATION

TODD HOLLOW ROAD

ORIENTATION

NORTHWEST

DISTANCE TO SITE

+/- 0.33 MILE

VISIBILITY

YEAR ROUND





PROPOSED

PHOTO

19

LOCATION

TODD HOLLOW ROAD

ORIENTATION

NORTHWEST

DISTANCE TO SITE

+/- 0.33 MILE

VISIBILITY

YEAR ROUND



EXISTING

PHOTO

20

LOCATION

TODD HOLLOW ROAD

ORIENTATION

NORTHWEST

DISTANCE TO SITE

+/- 0.43 MILE

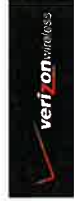
VISIBILITY

YEAR ROUND



PROPOSED

PHOTO	LOCATION	ORIENTATION	DISTANCE TO SITE	VISIBILITY
20	TODD HOLLOW ROAD	NORTHWEST	+/- 0.43 MILE	YEAR ROUND





EXISTING

PHOTO

21

LOCATION

TODD HOLLOW ROAD

ORIENTATION

NORTHWEST

DISTANCE TO SITE

+/- 0.44 MILE

VISIBILITY

YEAR ROUND



PROPOSED

PHOTO

21

LOCATION

TODD HOLLOW ROAD

ORIENTATION

NORTHWEST

DISTANCE TO SITE

+/- 0.44 MILE

VISIBILITY

YEAR ROUND





EXISTING

PHOTO

22

LOCATION

TODD HOLLOW ROAD

ORIENTATION

NORTHWEST

DISTANCE TO SITE

+/- 0.62 MILE

VISIBILITY

YEAR ROUND



ALL-POINTS
TECHNOLOGY CORPORATION





PROPOSED

PHOTO

22

LOCATION

TODD HOLLOW ROAD

ORIENTATION

NORTHWEST

DISTANCE TO SITE

+/- 0.62 MILE

VISIBILITY

YEAR ROUND



EXISTING

PHOTO

23

LOCATION

SCOTT ROAD

ORIENTATION

NORTHWEST

DISTANCE TO SITE

+/- 0.73 MILE

VISIBILITY

SEASONAL





PROPOSED

PHOTO

23

LOCATION

SCOTT ROAD

ORIENTATION

NORTHWEST

DISTANCE TO SITE

+/- 0.73 MILE

VISIBILITY

SEASONAL



ALL-POINTS
TECHNOLOGY CORPORATION





EXISTING

PHOTO	LOCATION	ORIENTATION	DISTANCE TO SITE	VISIBILITY
24	KEEGAN ROAD	NORTHWEST	+/- 0.76 MILE	NOT VISIBLE



EXISTING

PHOTO	LOCATION	ORIENTATION	DISTANCE TO SITE	VISIBILITY
25	KEEGAN ROAD	NORTHWEST	+/- 0.55 MILE	SEASONAL



PROPOSED

PHOTO	LOCATION	ORIENTATION	DISTANCE TO SITE	VISIBILITY
25	KEEGAN ROAD	NORTHWEST	+/- 0.55 MILE	SEASONAL



EXISTING

PHOTO

26

LOCATION

KEEGAN ROAD

ORIENTATION

NORTH

DISTANCE TO SITE

+/- 0.21 MILE

VISIBILITY

YEAR ROUND



PROPOSED

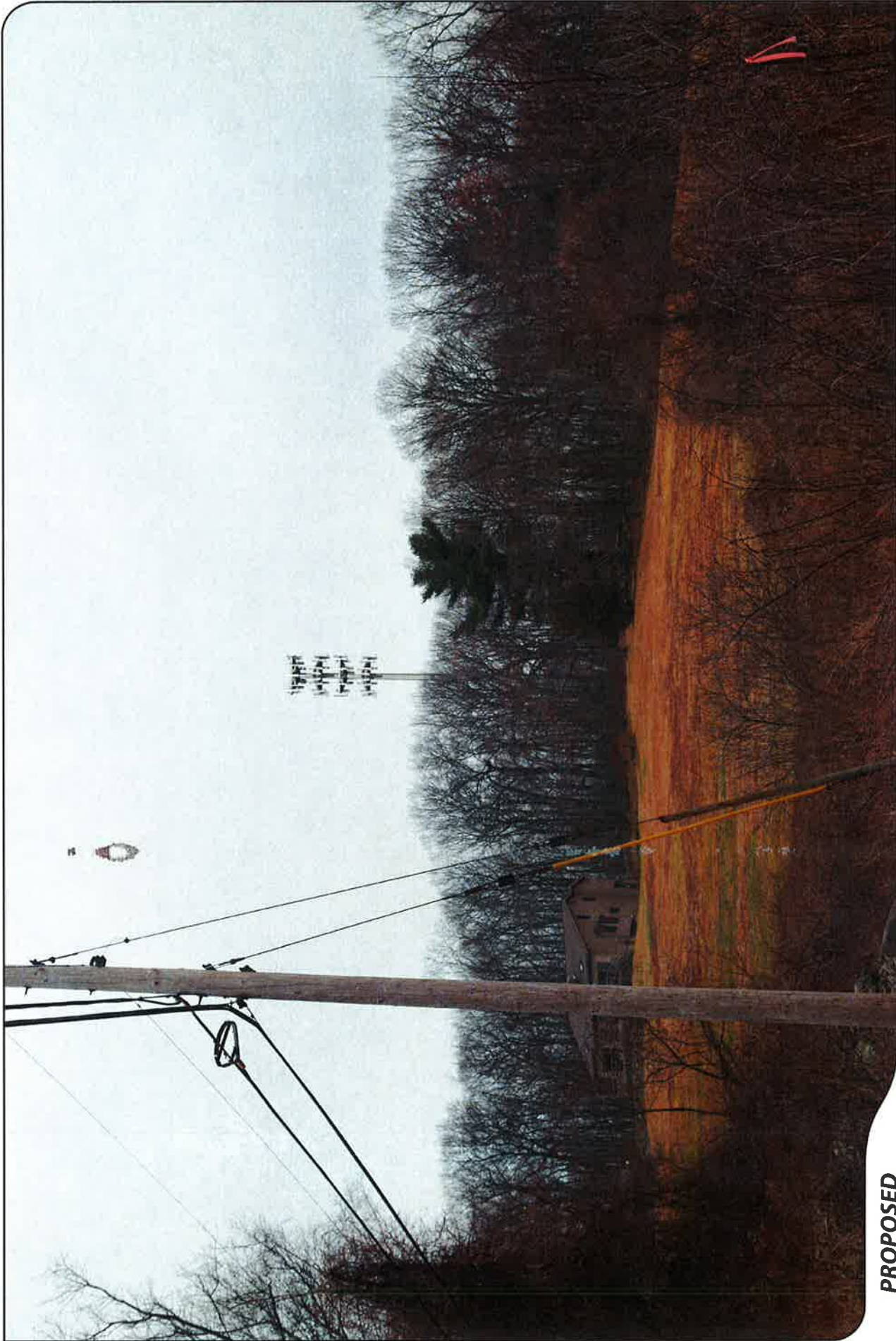
PHOTO	LOCATION	ORIENTATION	DISTANCE TO SITE	VISIBILITY
26	KEEGAN ROAD	NORTH	+/- 0.21 MILE	YEAR ROUND





EXISTING

PHOTO	LOCATION	ORIENTATION	DISTANCE TO SITE	VISIBILITY
27	KEEGAN ROAD	NORTH	+/- 0.14 MILE	YEAR ROUND



PROPOSED

PHOTO

27

LOCATION

KEEGAN ROAD

ORIENTATION

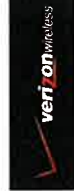
NORTH

DISTANCE TO SITE

+/- 0.14 MILE

VISIBILITY

YEAR ROUND





EXISTING

PHOTO

28

LOCATION

KNIGHT LANE

ORIENTATION

WEST

DISTANCE TO SITE

+/- 0.60 MILE

VISIBILITY

YEAR ROUND





PROPOSED

PHOTO

28

LOCATION

KNIGHT LANE

ORIENTATION

WEST

DISTANCE TO SITE

+/- 0.60 MILE

VISIBILITY

YEAR ROUND





EXISTING

PHOTO

29

LOCATION
SCOTT ROAD

ORIENTATION
SOUTHWEST

DISTANCE TO SITE
+/- 0.85 MILE

VISIBILITY
NOT VISIBLE



ALL-POINTS
TECHNOLOGY CORPORATION





EXISTING

PHOTO

30

LOCATION

CROSS ROAD

ORIENTATION

WEST

DISTANCE TO SITE

+/- 0.93 MILE

VISIBILITY

NOT VISIBLE





EXISTING

PHOTO

31

LOCATION

TOWN HILL ROAD

ORIENTATION

SOUTHWEST

DISTANCE TO SITE

+/- 1.20 MILES

VISIBILITY

NOT VISIBLE





EXISTING

PHOTO

32

LOCATION

TOWN HILL ROAD

ORIENTATION

WEST

DISTANCE TO SITE

+/- 1.36 MILES

VISIBILITY

NOT VISIBLE

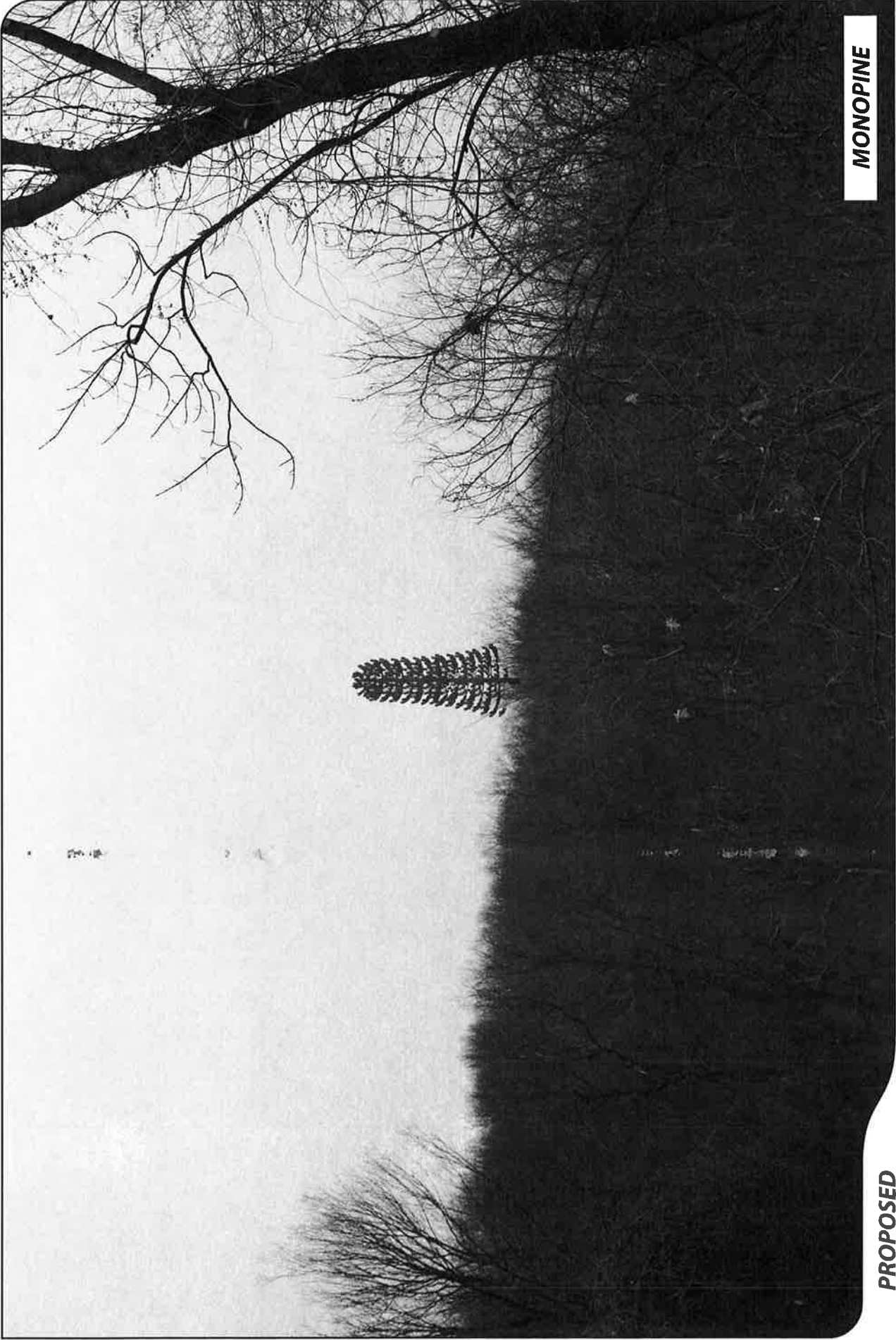


MONOPINE

PROPOSED

PHOTO	LOCATION	ORIENTATION	DISTANCE TO SITE	VISIBILITY
3	SOUTH STREET	SOUTHEAST	+/- 0.30 MILE	YEAR ROUND





MONOPINE

PROPOSED

PHOTO

5

LOCATION

SOUTH STREET

ORIENTATION

NORTHEAST

DISTANCE TO SITE

+/- 0.16 MILE

VISIBILITY

YEAR ROUND





MONOPINE

PROPOSED

PHOTO

7

LOCATION

SOUTH STREET

ORIENTATION

NORTHEAST

DISTANCE TO SITE

+/- 0.29 MILE

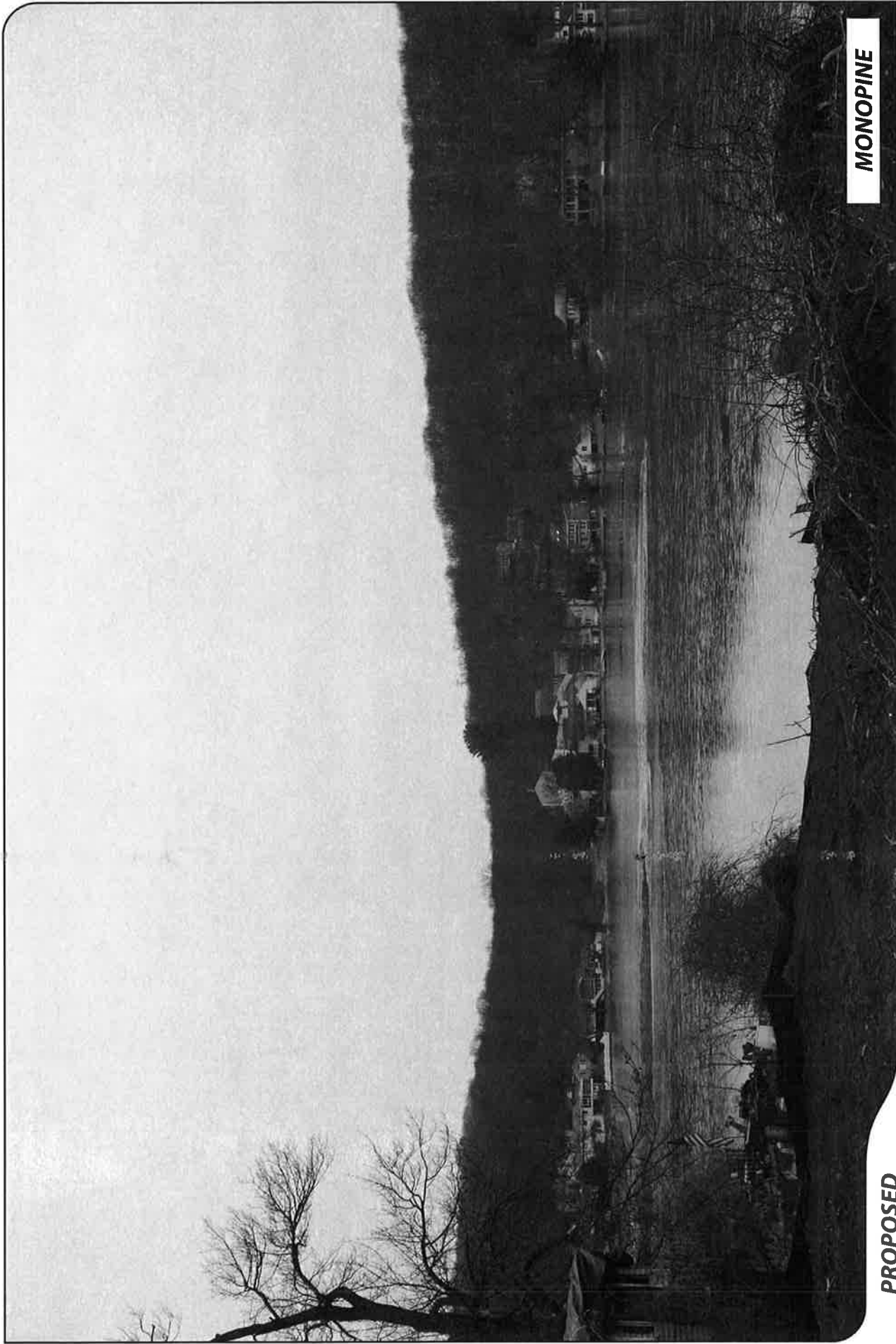
VISIBILITY

YEAR ROUND



ALL-POINTS
TECHNOLOGY CORPORATION





MONOPINE

PROPOSED

PHOTO	LOCATION	ORIENTATION	DISTANCE TO SITE	VISIBILITY
9	WEST LAKESIDE ROAD AT LAKE PLYMOUTH BOULEVARD	NORTHEAST	+/- 0.81 MILE	YEAR ROUND





PROPOSED

PHOTO	LOCATION	ORIENTATION	DISTANCE TO SITE	VISIBILITY
9	WEST LAKESIDE ROAD AT LAKE PLYMOUTH BOULEVARD	NORTHEAST	+/- 0.81 MILE	YEAR ROUND





MONOPINE

PROPOSED

PHOTO	LOCATION	ORIENTATION	DISTANCE TO SITE	VISIBILITY
16	TODD HOLLOW ROAD	SOUTHWEST	+/- 0.36 MILE	YEAR ROUND





MONOPINE

PROPOSED

PHOTO	LOCATION	ORIENTATION	DISTANCE TO SITE	VISIBILITY
20	TODD HOLLOW ROAD	NORTHWEST	+/- 0.43 MILE	YEAR ROUND



PROPOSED

MONOPINE

PHOTO	LOCATION	ORIENTATION	DISTANCE TO SITE	VISIBILITY
22	TODD HOLLOW ROAD	NORTHWEST	+/- 0.62 MILE	YEAR ROUND

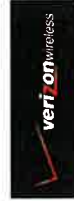


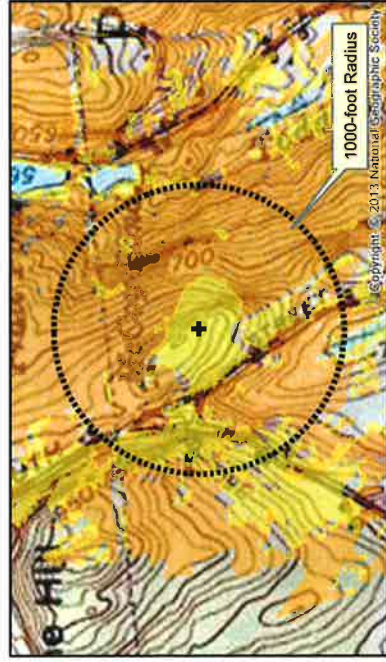


PROPOSED

MONOPINE

PHOTO	LOCATION	ORIENTATION	DISTANCE TO SITE	VISIBILITY
27	KEEGAN ROAD	NORTH	+/- 0.14 MILE	YEAR ROUND





Viewshed Map – Topo Base

Proposed Wireless Telecommunications Facility
Plymouth West Relo
 33 Keegan Road, Plymouth, CT

Proposed facility height is 140 feet AGL.
 Existing tree canopy height estimated as 65 feet.
 Study area encompasses a two-mile radius and includes 8,042 acres of land.

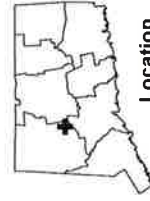
Map compiled 12/30/2014

Map information field verified by APT on 12/16/2014.

Only those resources located within the extent of the map are depicted. For a complete list of data sources consulted for this analysis, please refer to the Documentation Page.

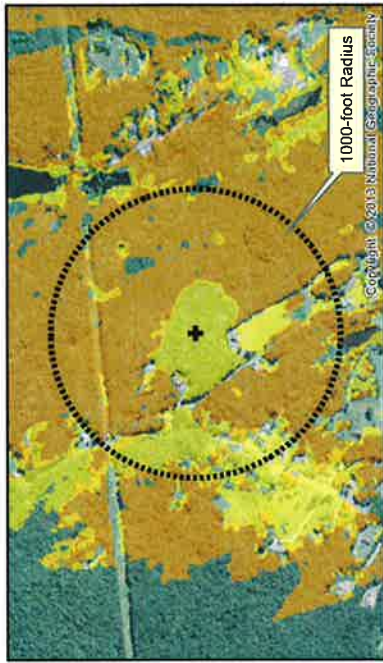
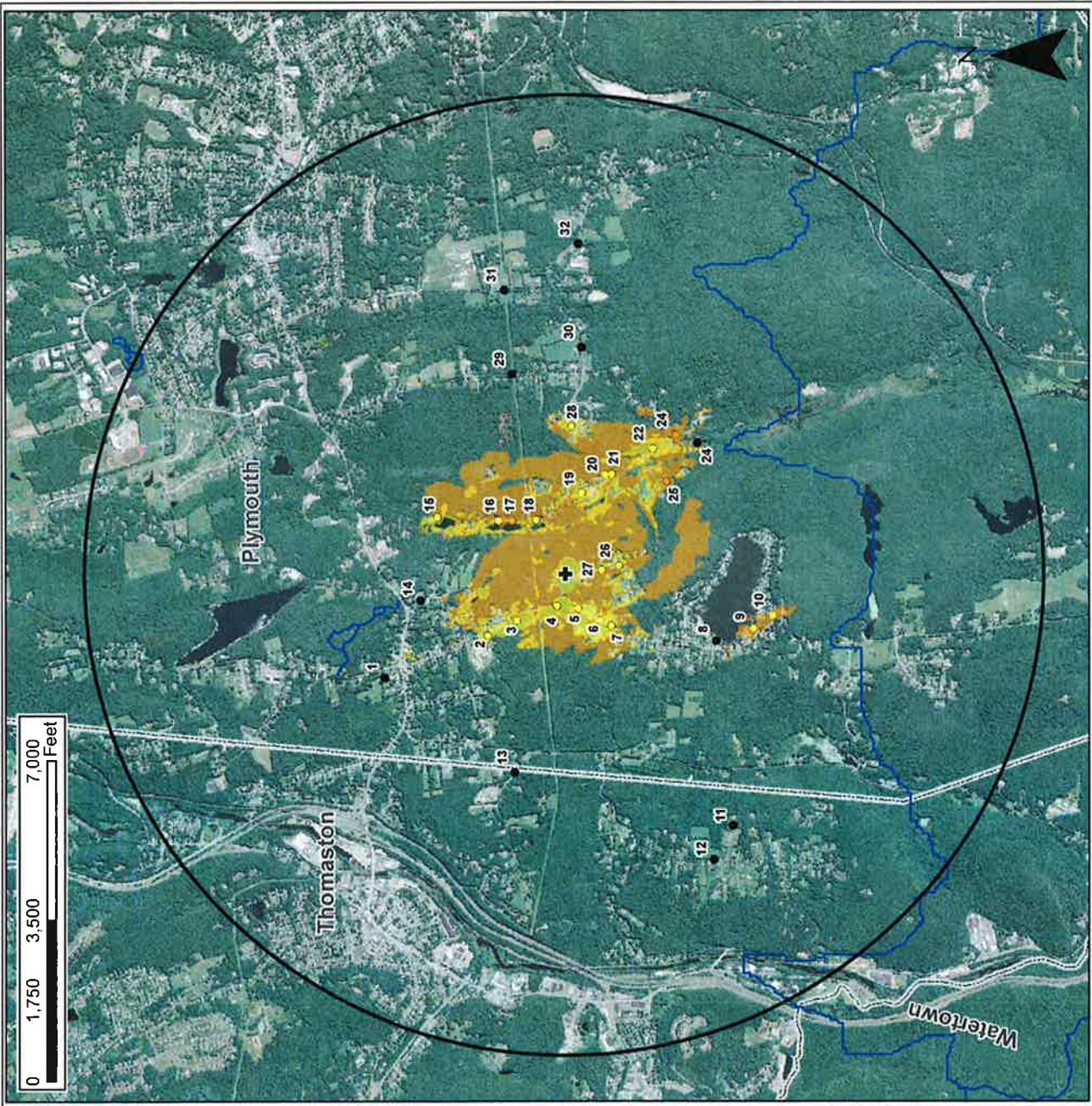
Legend

- Proposed Tower Location
- Photo Locations
- Not Visible
- Seasonal Views
- Year-round Views
- Trails
- Predicted Seasonal Visibility (284 Acres)
- Predicted Year-Round Visibility (65 Acres)
- Towns
- 2-Mile Study Area



Location





Viewshed Map – Aerial Base

Proposed Wireless Telecommunications Facility
 Plymouth West Relo
 33 Keegan Road, Plymouth, CT

Proposed facility height is 140 feet AGL.
 Existing tree canopy height estimated as 65 feet.
 Study area encompasses a two-mile radius and
 includes 8,042 acres of land.

Map compiled 12/30/2014

Map information field verified by APT on 12/16/2014.

Only those resources located within the extent of the map are depicted. For a complete list of data sources consulted for this analysis, please refer to the Documentation Page.

Legend

Proposed Tower Location

Photo Locations

Not Visible

Seasonal Views

Year-round Views

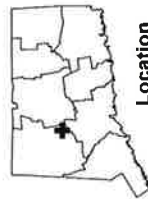
Trails

Predicted Seasonal Visibility (284 Acres)

Predicted Year-Round Visibility (65 Acres)

Towns

2-Mile Study Area



Location



DOCUMENTATION

SOURCES CONSULTED FOR VIEWSHED MAPS 33 Keegan Road Plymouth, Connecticut

Physical Geography / Background Data

Center for Land Use Education and Research, University of Connecticut (<http://clear.uconn.edu>)

- *Land Use / Land Cover (2006)
- *Coniferous and Deciduous Forest (2006)
- *LiDAR data – topography (2000)

United States Geological Survey

- *USGS topographic quadrangle maps – Thomaston (1984)

National Resource Conservation Service

- *NAIP aerial photography (2012)

Department of Transportation data

- ^State Scenic Highways (updated monthly)

Heritage Consultants

- ^Municipal Scenic Roads

Cultural Resources

Heritage Consultants

- ^National Register
- ^ Local Survey Data

Dedicated Open Space & Recreation Areas

Connecticut Department of Energy and Environmental Protection (DEEP)

- *DEEP Property (May 2007)
- *Federal Open Space (1997)
- *Municipal and Private Open Space (1997)
- *DEEP Boat Launches (1994)

Connecticut Forest & Parks Association

- ^Connecticut Walk Books East & West –

The Guide to the Blue-Blazed Hiking Trails of Eastern Connecticut Western Connecticut, 19th Edition, 2006.

Other

- ^ConnDOT Scenic Strips (based on Department of Transportation data)

* Available to the public in GIS-compatible format (some require fees).

^ Data not available to general public in GIS format. Reviewed independently and, where applicable, GIS data later prepared specifically for this Study Area.

NOTE Not all the sources listed above appear on the Viewshed Maps. Only those features within the scale of the graphic are shown.

LIMITATIONS

The visibility analysis map(s) presented in this report depict areas where the proposed Facility may potentially be visible to the human eye without the aid of magnification based on a viewer eye-height of 5 feet above the ground and intervening topography and an assumed tree canopy height of 65 feet. This analysis may not necessarily account for all visible locations, as it is based on the combination of computer modeling, incorporating 2012 aerial photographs, and in-field observations from publicly-accessible locations. No access to private properties beyond the host Property was provided to APT personnel. This analysis does not claim to depict the only areas, or all locations, where visibility may occur; it is intended to provide a representation of those areas where the Facility is likely to be seen.

The photo-simulations in this report are provided for visual representation only. Actual visibility depends on various environmental conditions, including (but not necessarily limited to) weather, season, time of day, and viewer location.