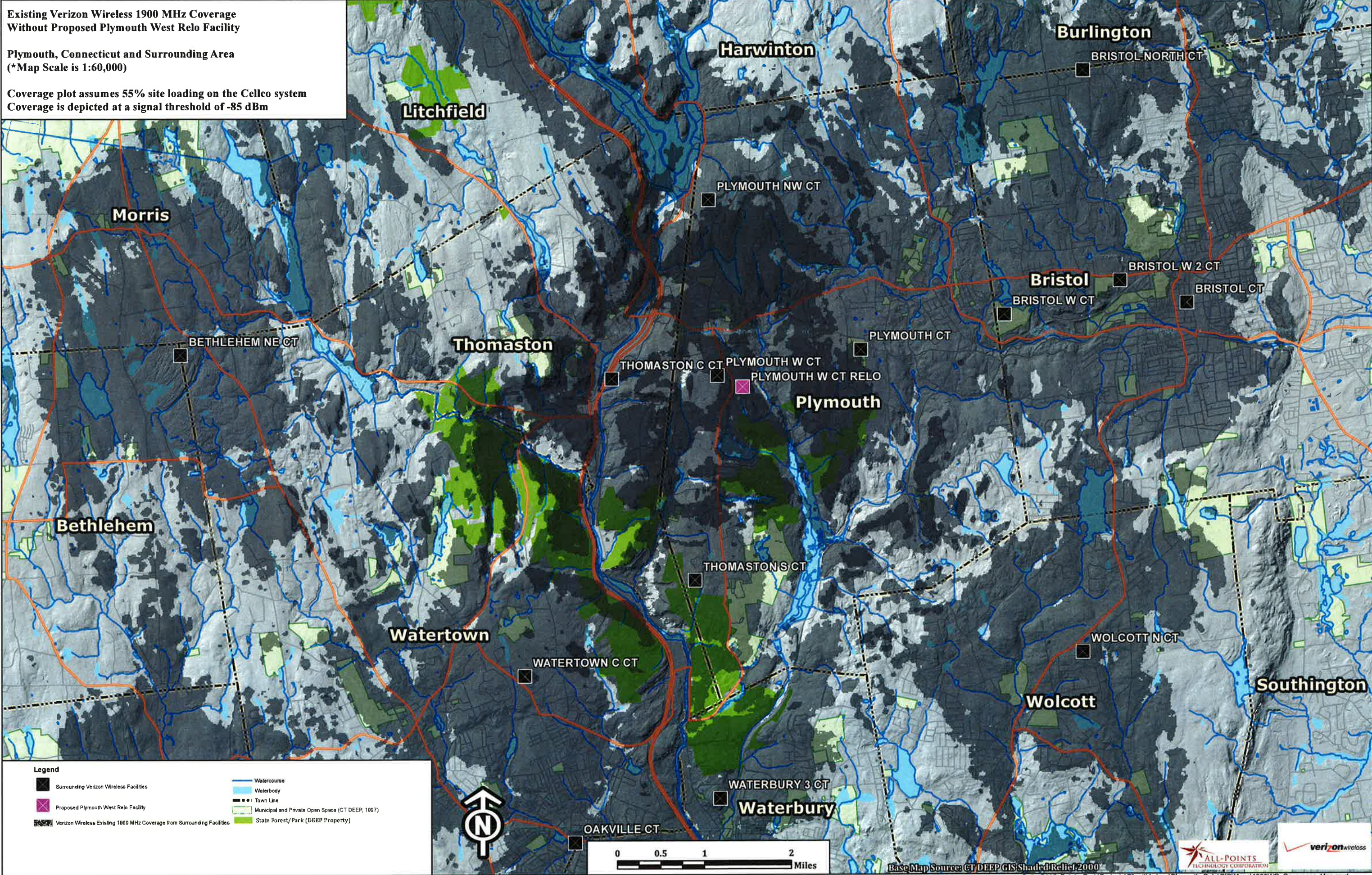


Existing Verizon Wireless 1900 MHz Coverage
Without Proposed Plymouth West Relo Facility

Plymouth, Connecticut and Surrounding Area
(*Map Scale is 1:60,000)

Coverage plot assumes 55% site loading on the Celco system
Coverage is depicted at a signal threshold of -85 dBm



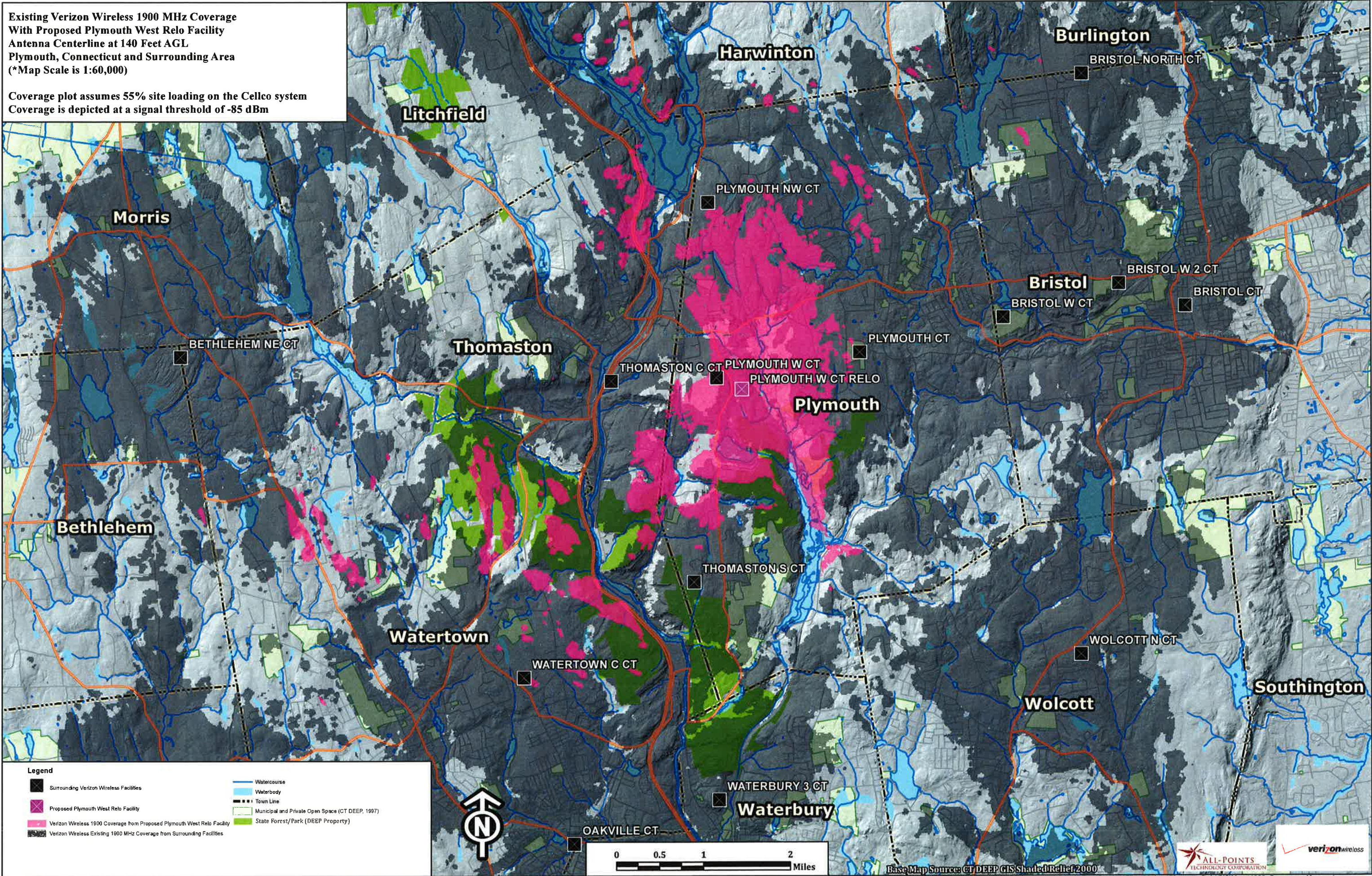
Legend

- Surrounding Verizon Wireless Facilities
- Proposed Plymouth West Relo Facility
- Verizon Wireless Existing 1900 MHz Coverage from Surrounding Facilities
- Watercourse
- Waterbody
- Town Line
- Municipal and Private Open Space (CT DEEP, 1997)
- State Forest/Park (DEEP Property)



Existing Verizon Wireless 1900 MHz Coverage
 With Proposed Plymouth West Relo Facility
 Antenna Centerline at 140 Feet AGL
 Plymouth, Connecticut and Surrounding Area
 (*Map Scale is 1:60,000)

Coverage plot assumes 55% site loading on the Celco system
 Coverage is depicted at a signal threshold of -85 dBm



Legend

- Surrounding Verizon Wireless Facilities
- Proposed Plymouth West Relo Facility
- Verizon Wireless 1900 Coverage from Proposed Plymouth West Relo Facility
- Verizon Wireless Existing 1900 MHz Coverage from Surrounding Facilities
- Watercourse
- Waterbody
- Town Line
- Municipal and Private Open Space (CT DEEP, 1997)
- State Forest/Park (DEEP Property)



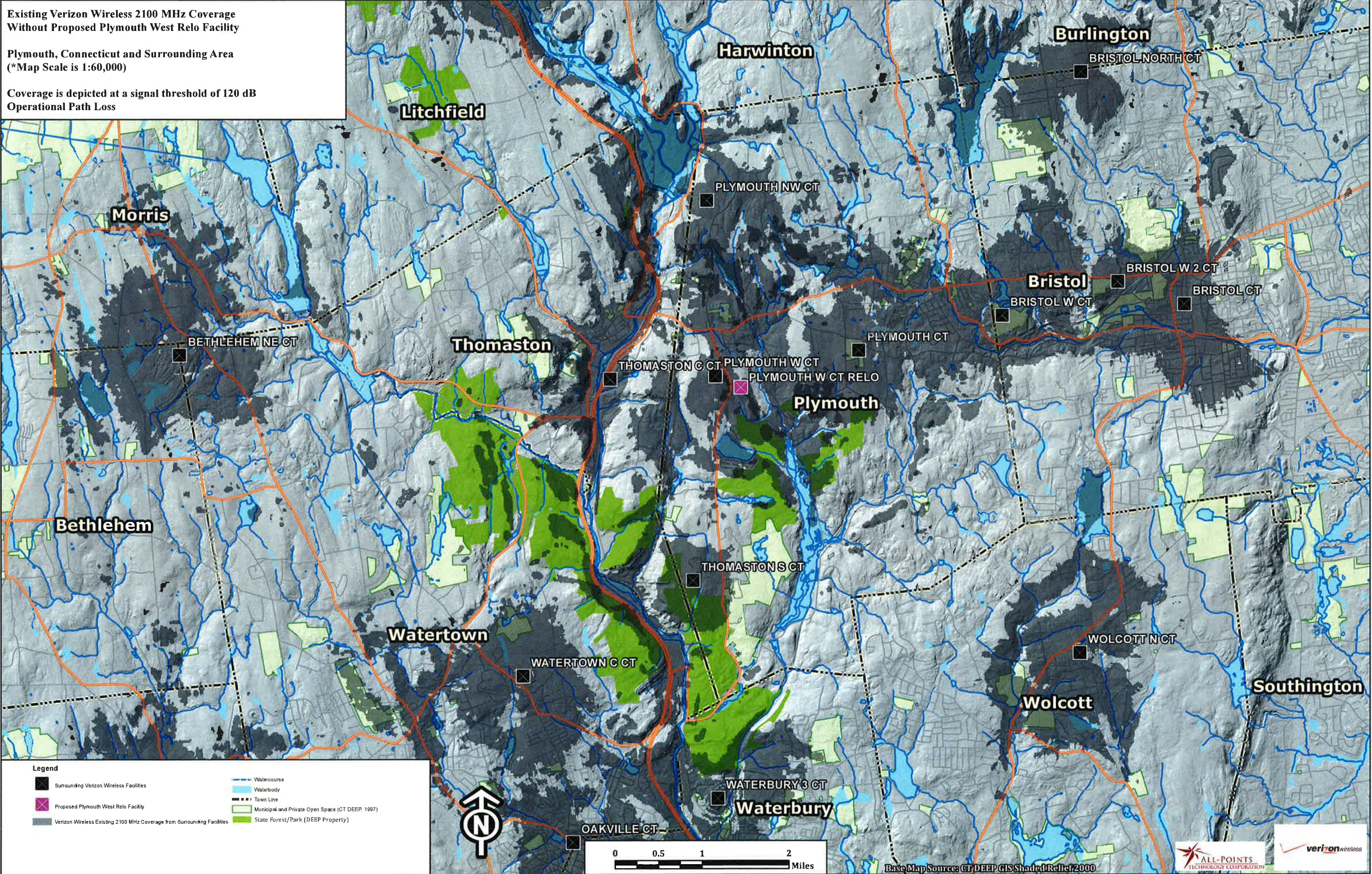
Base Map Source: CT DEEP GIS Shaded Relief 2000



Existing Verizon Wireless 2100 MHz Coverage
Without Proposed Plymouth West Relo Facility

Plymouth, Connecticut and Surrounding Area
(*Map Scale is 1:60,000)

Coverage is depicted at a signal threshold of 120 dB
Operational Path Loss

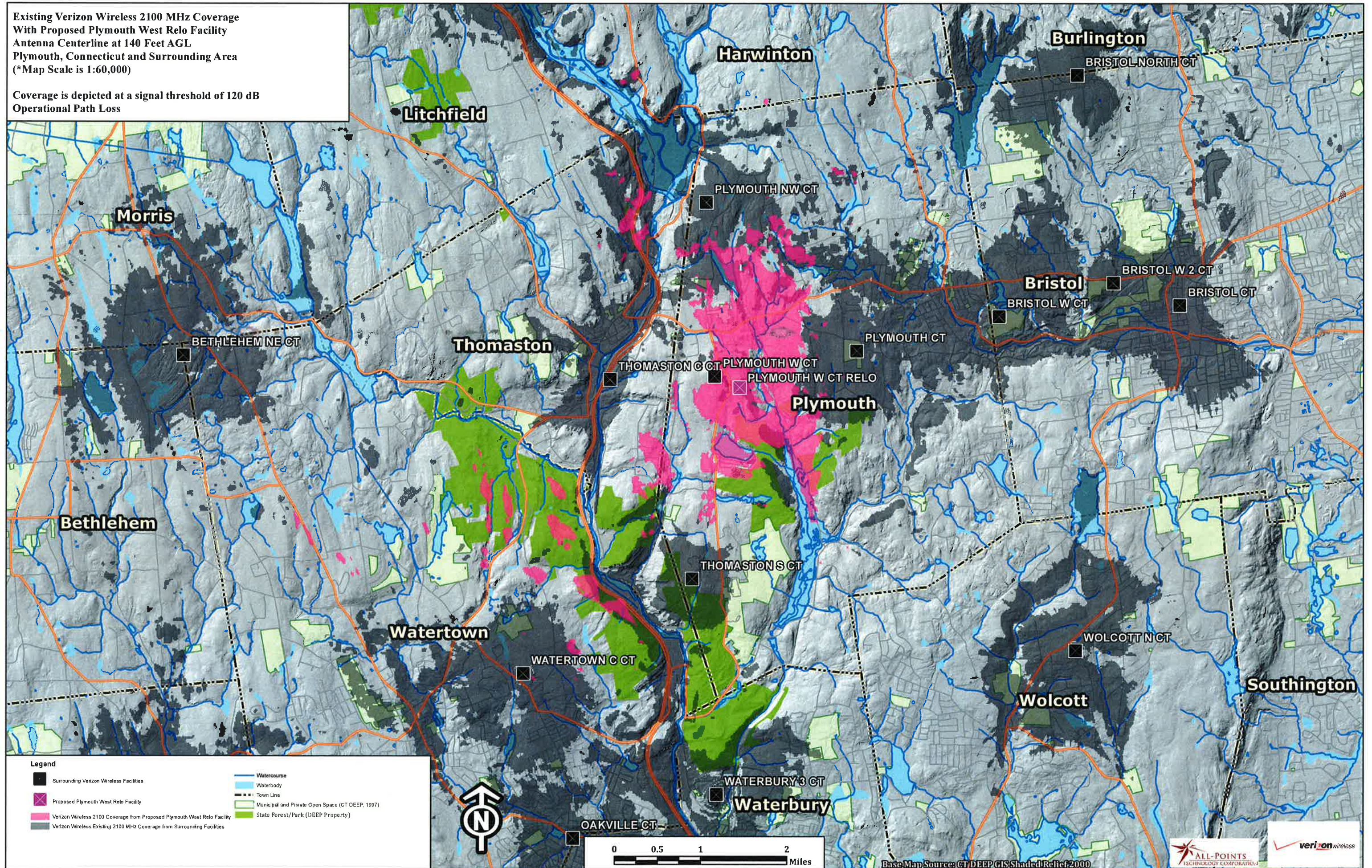


Legend

- Surrounding Verizon Wireless Facilities
- Proposed Plymouth West Relo Facility
- Verizon Wireless Existing 2100 MHz Coverage from Surrounding Facilities
- Watercourse
- Waterbody
- Town Line
- Municipal and Private Open Space (CT DEEP, 1997)
- State Forest/Park (DEEP Property)

Existing Verizon Wireless 2100 MHz Coverage
 With Proposed Plymouth West Relo Facility
 Antenna Centerline at 140 Feet AGL
 Plymouth, Connecticut and Surrounding Area
 (*Map Scale is 1:60,000)

Coverage is depicted at a signal threshold of 120 dB
 Operational Path Loss



- Legend**
- Surrounding Verizon Wireless Facilities
 - Proposed Plymouth West Relo Facility
 - Verizon Wireless 2100 Coverage from Proposed Plymouth West Relo Facility
 - Verizon Wireless Existing 2100 MHz Coverage from Surrounding Facilities
 - Watercourse
 - Waterbody
 - Town Line
 - Municipal and Private Open Space (CT DEEP, 1997)
 - State Forest/Park (DEEP Property)



Base Map Source: CT DEEP GIS Shaded Relief 2000

