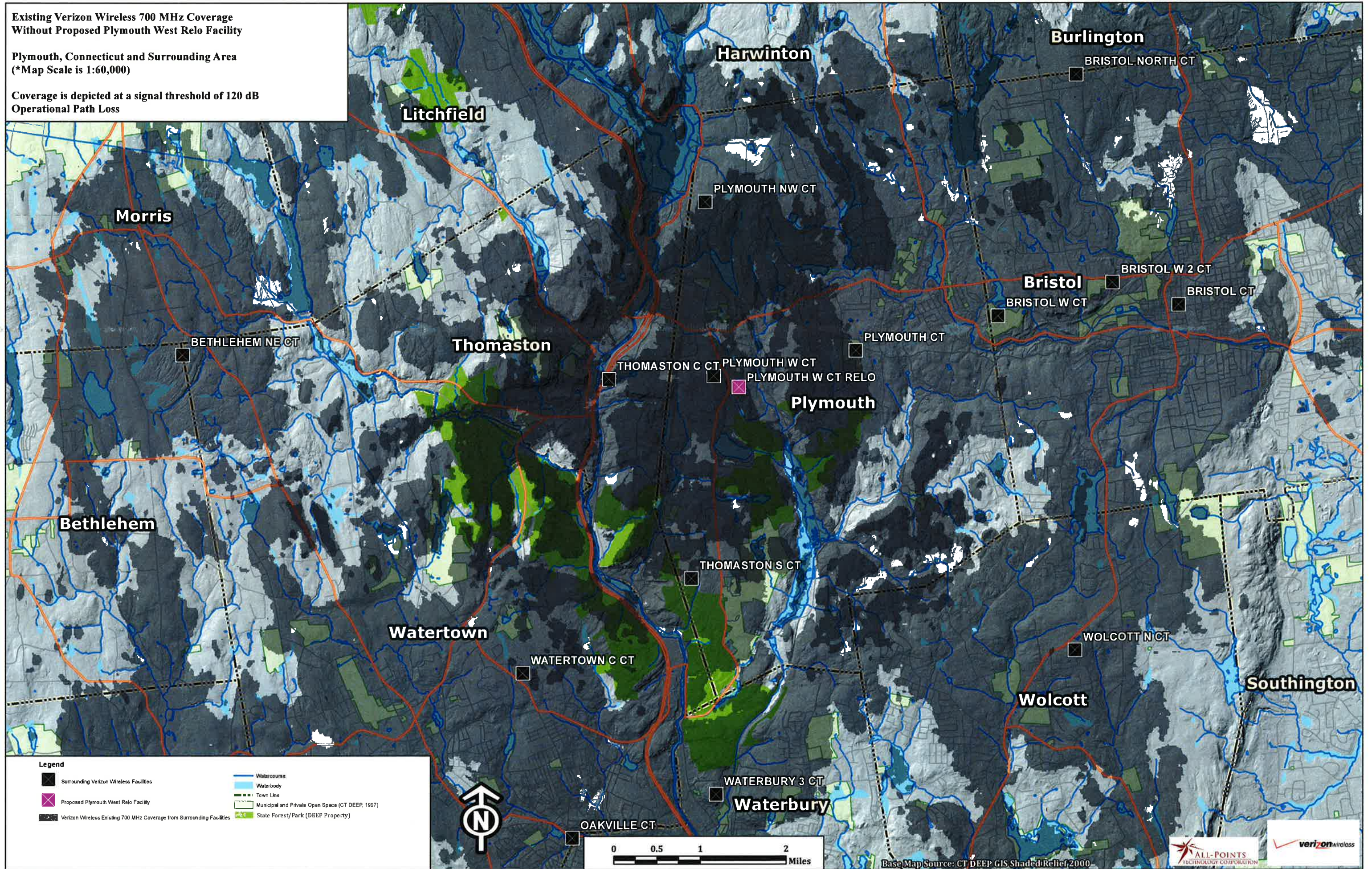


**Existing Verizon Wireless 700 MHz Coverage
Without Proposed Plymouth West Relo Facility**

Plymouth, Connecticut and Surrounding Area
(*Map Scale is 1:60,000)

Coverage is depicted at a signal threshold of 120 dB
Operational Path Loss



- Legend**
- Surrounding Verizon Wireless Facilities
 - Proposed Plymouth West Relo Facility
 - Verizon Wireless Existing 700 MHz Coverage from Surrounding Facilities
 - Watercourse
 - Waterbody
 - Town Line
 - Municipal and Private Open Space (CT DEEP, 1997)
 - State Forest/Park (DBEP Property)

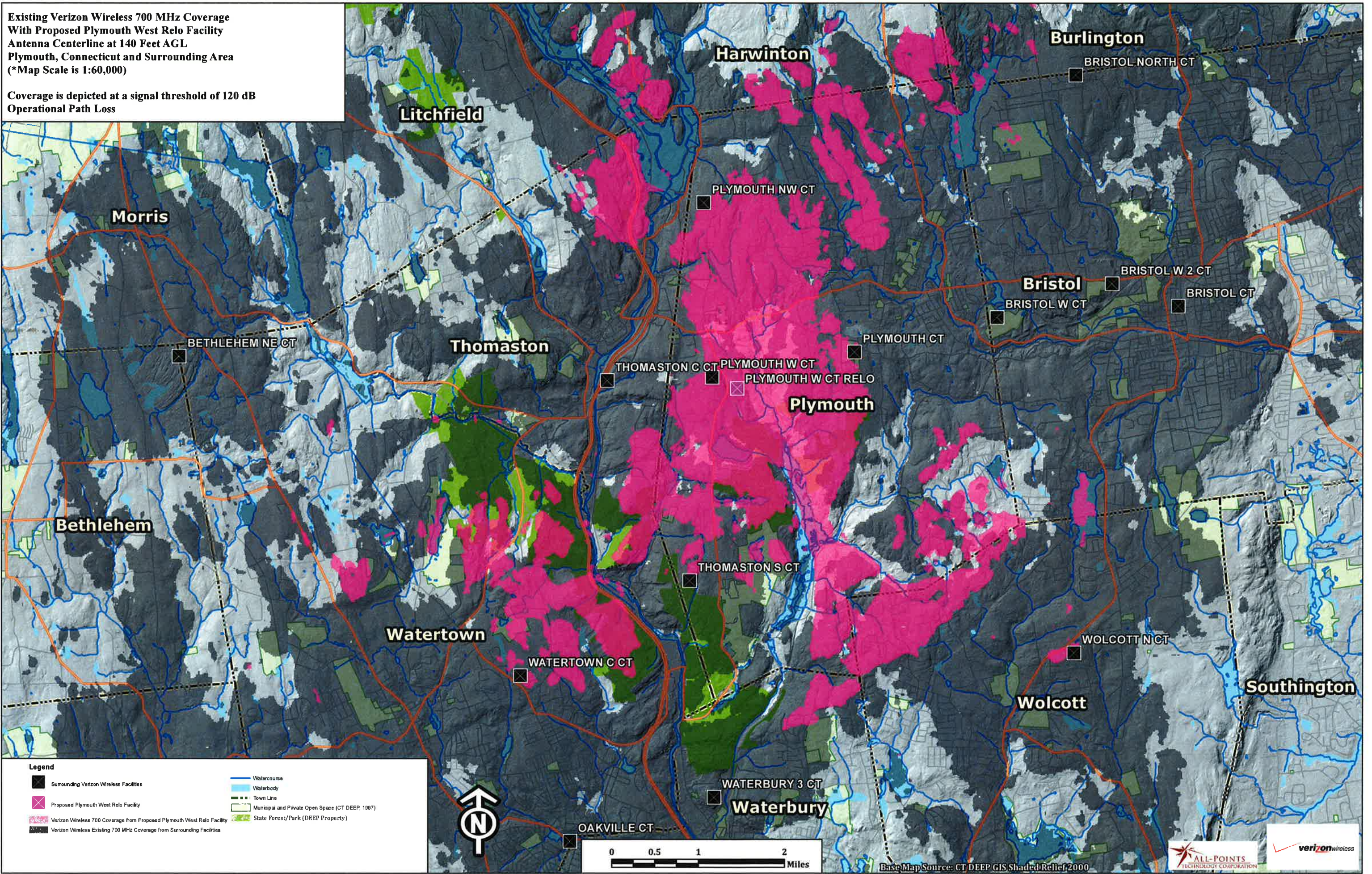


Base Map Source: CT DEEP GIS Shaded Relief 2000

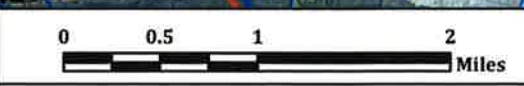


Existing Verizon Wireless 700 MHz Coverage
 With Proposed Plymouth West Relo Facility
 Antenna Centerline at 140 Feet AGL
 Plymouth, Connecticut and Surrounding Area
 (*Map Scale is 1:60,000)

Coverage is depicted at a signal threshold of 120 dB
 Operational Path Loss



- Legend**
- Surrounding Verizon Wireless Facilities
 - Proposed Plymouth West Relo Facility
 - Verizon Wireless 700 Coverage from Proposed Plymouth West Relo Facility
 - Verizon Wireless Existing 700 MHz Coverage from Surrounding Facilities
 - Watercourse
 - Waterbody
 - Town Line
 - Municipal and Private Open Space (CT DEEP, 1997)
 - State Forest/Park (DEEP Property)



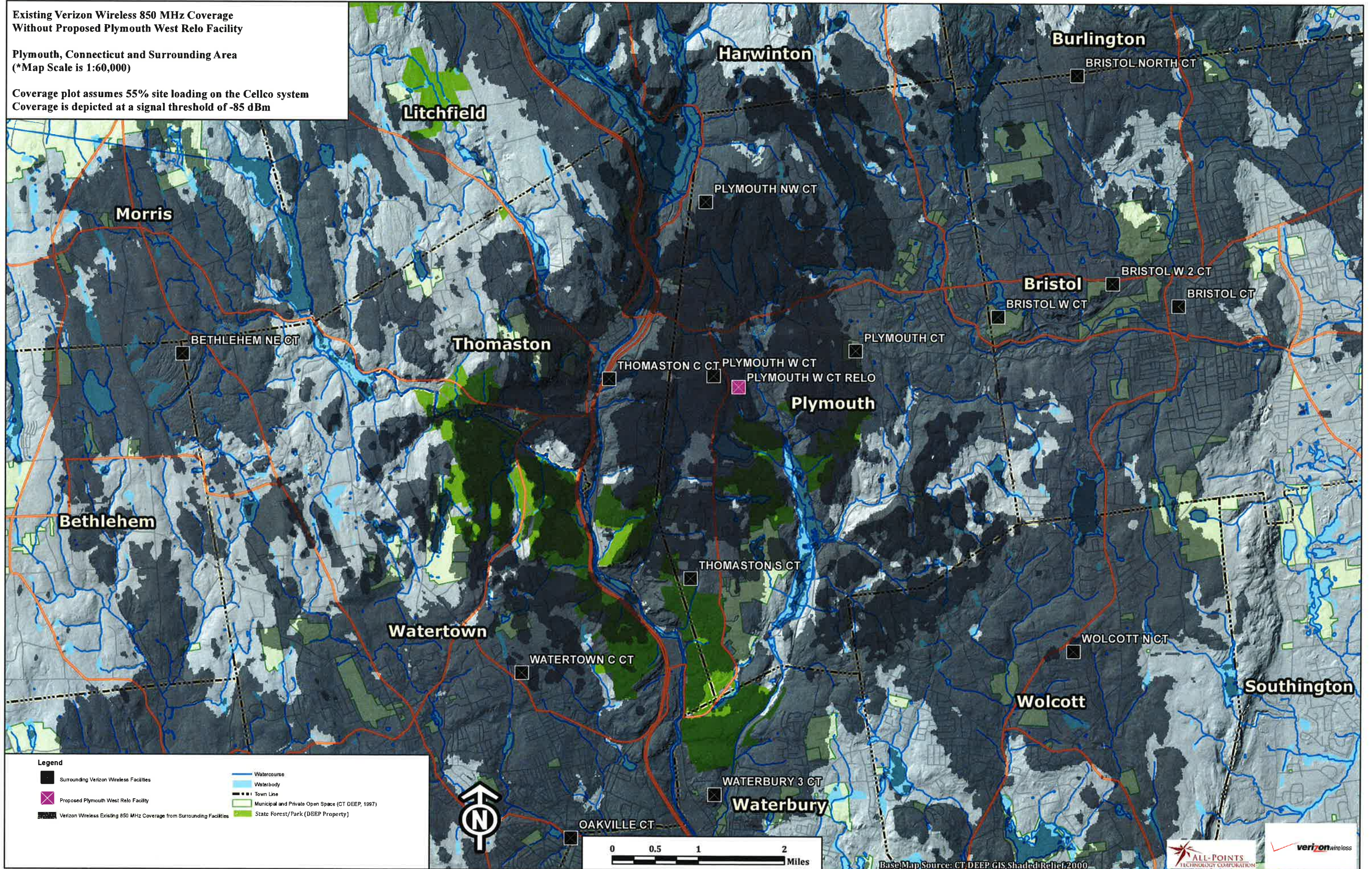
Base Map Source: CT DEEP GIS Shaded Relief 2000



**Existing Verizon Wireless 850 MHz Coverage
Without Proposed Plymouth West Relo Facility**

Plymouth, Connecticut and Surrounding Area
(*Map Scale is 1:60,000)

Coverage plot assumes 55% site loading on the Celco system
Coverage is depicted at a signal threshold of -85 dBm



- Legend**
- Surrounding Verizon Wireless Facilities
 - Proposed Plymouth West Relo Facility
 - Verizon Wireless Existing 850 MHz Coverage from Surrounding Facilities
 - Watercourse
 - Waterbody
 - Town Line
 - Municipal and Private Open Space (CT DEEP, 1997)
 - State Forest/Park (DEEP Property)

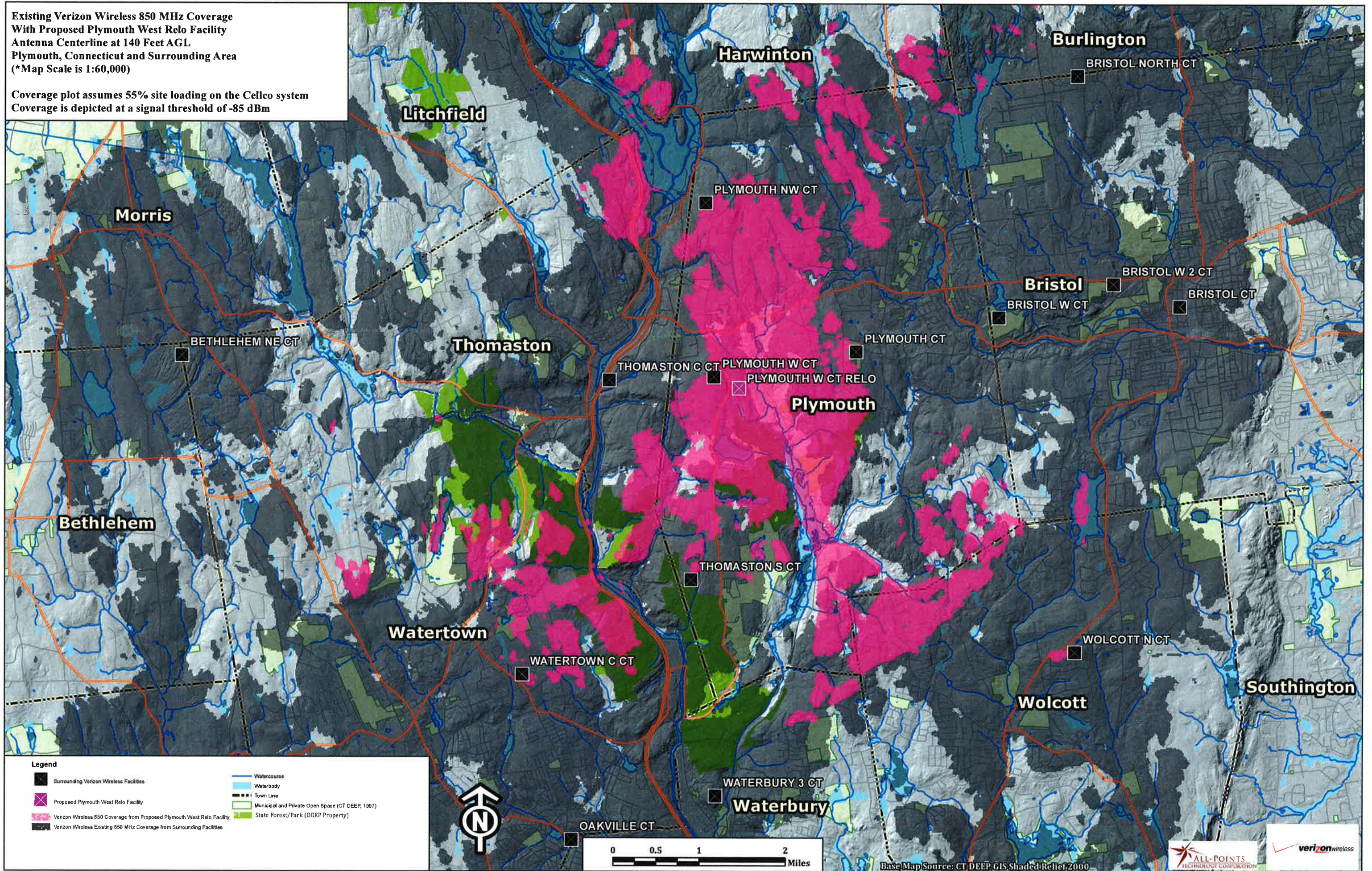


Base Map Source: CT DEEP GIS Shaded Relief 2000



Existing Verizon Wireless 850 MHz Coverage
 With Proposed Plymouth West Relo Facility
 Antenna Centerline at 140 Feet AGL
 Plymouth, Connecticut and Surrounding Area
 (*Map Scale is 1:60,000)

Coverage plot assumes 55% site loading on the Celco system
 Coverage is depicted at a signal threshold of -85 dBm



Legend

	Surrounding Verizon Wireless Facilities		Watercourse
	Proposed Plymouth West Relo Facility		Waterbody
	Verizon Wireless 850 Coverage from Proposed Plymouth West Relo Facility		Town Line
	Verizon Wireless Existing 850 MHz Coverage from Surrounding Facilities		Municipal and Private Open Space (CT DEEP, 1997)
			State Forest/Park (DBEP Property)



Base Map Source: CT DEEP GIS Shaded Relief 2000