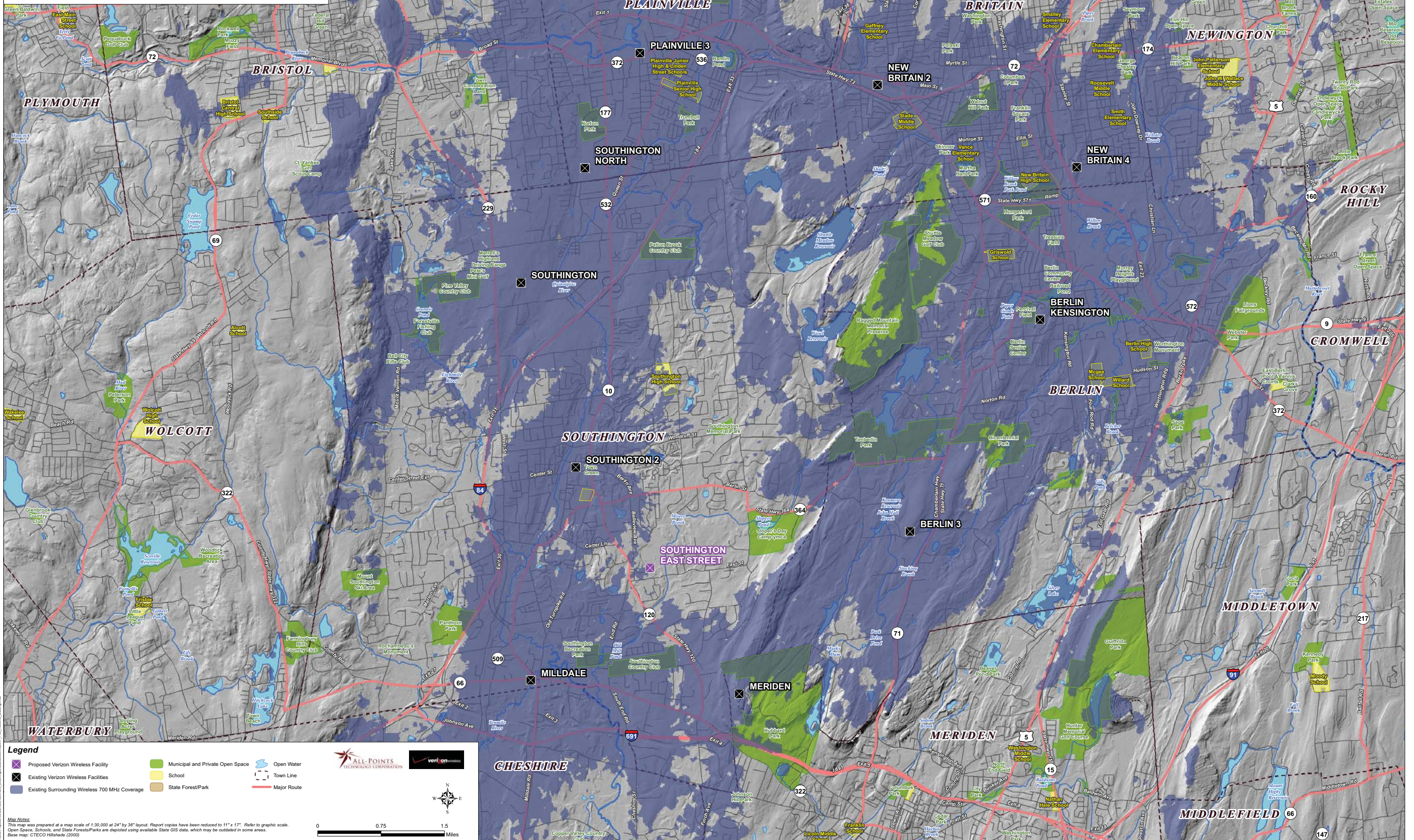


**Existing Verizon Wireless 700 MHz Coverage
 Southington, Connecticut and Surrounding Area
 (*Map Scale is 1:30,000)**

Coverage is depicted at a signal threshold of 120 dB Operational Path Loss



Legend

- Proposed Verizon Wireless Facility
- Municipal and Private Open Space
- Open Water
- Existing Verizon Wireless Facilities
- School
- Town Line
- Existing Surrounding Wireless 700 MHz Coverage
- State Forest/Park
- Major Route

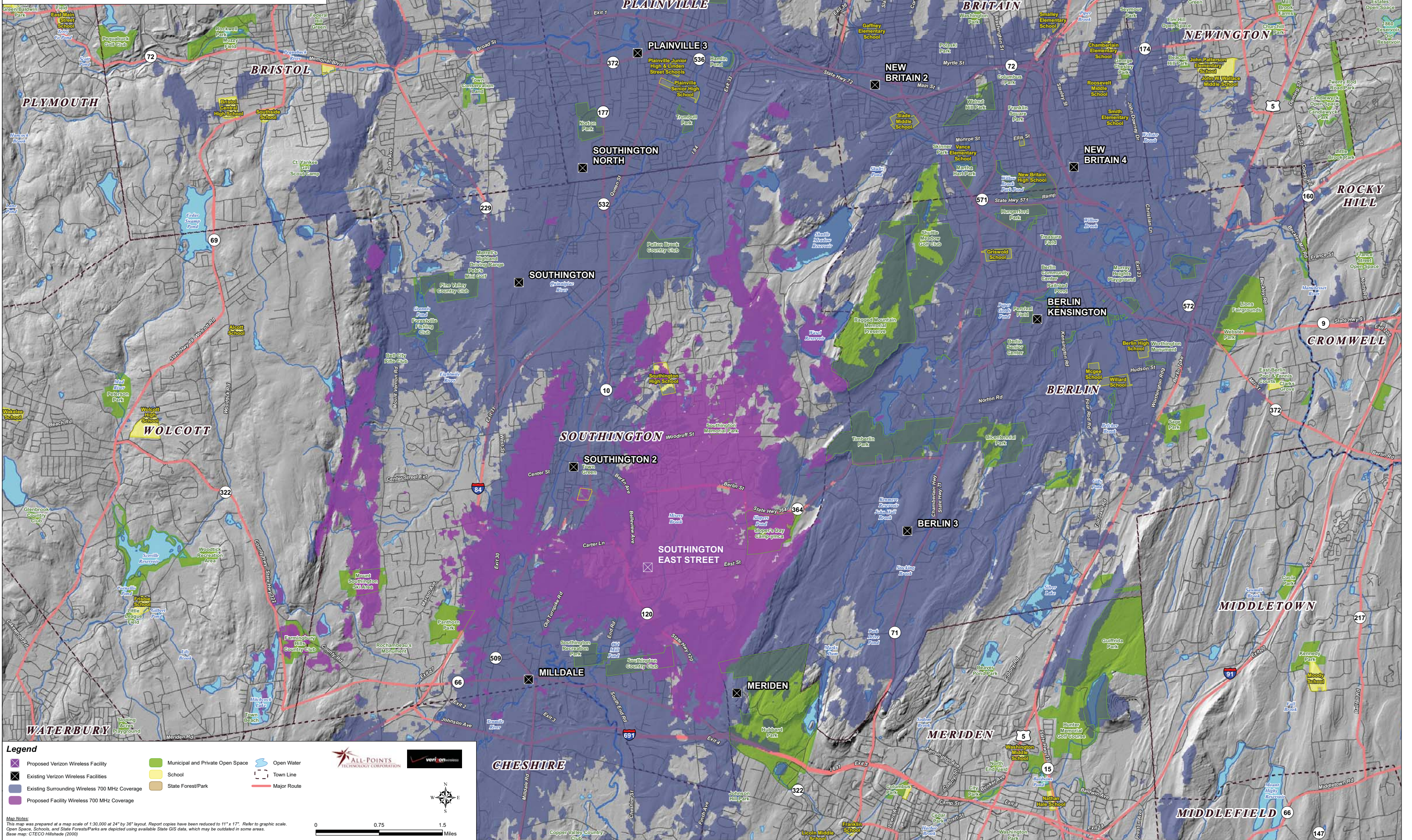
Map Notes:
 This map was prepared at a map scale of 1:30,000 at 24" by 36" layout. Report copies have been reduced to 11" x 17". Refer to graphic scale.
 Open Space, Schools, and State Forest/Parks are depicted using available State GIS data, which may be outdated in some areas.
 Base map: CTECO Hillshade (2000)

Scale: 0 0.75 1.5 Miles

Logos: ALL-POINTS TECHNOLOGY CORPORATION, verizon

**Proposed Verizon Wireless 700 MHz Coverage
Southington, Connecticut and Surrounding Area
(*Map Scale is 1:30,000)**

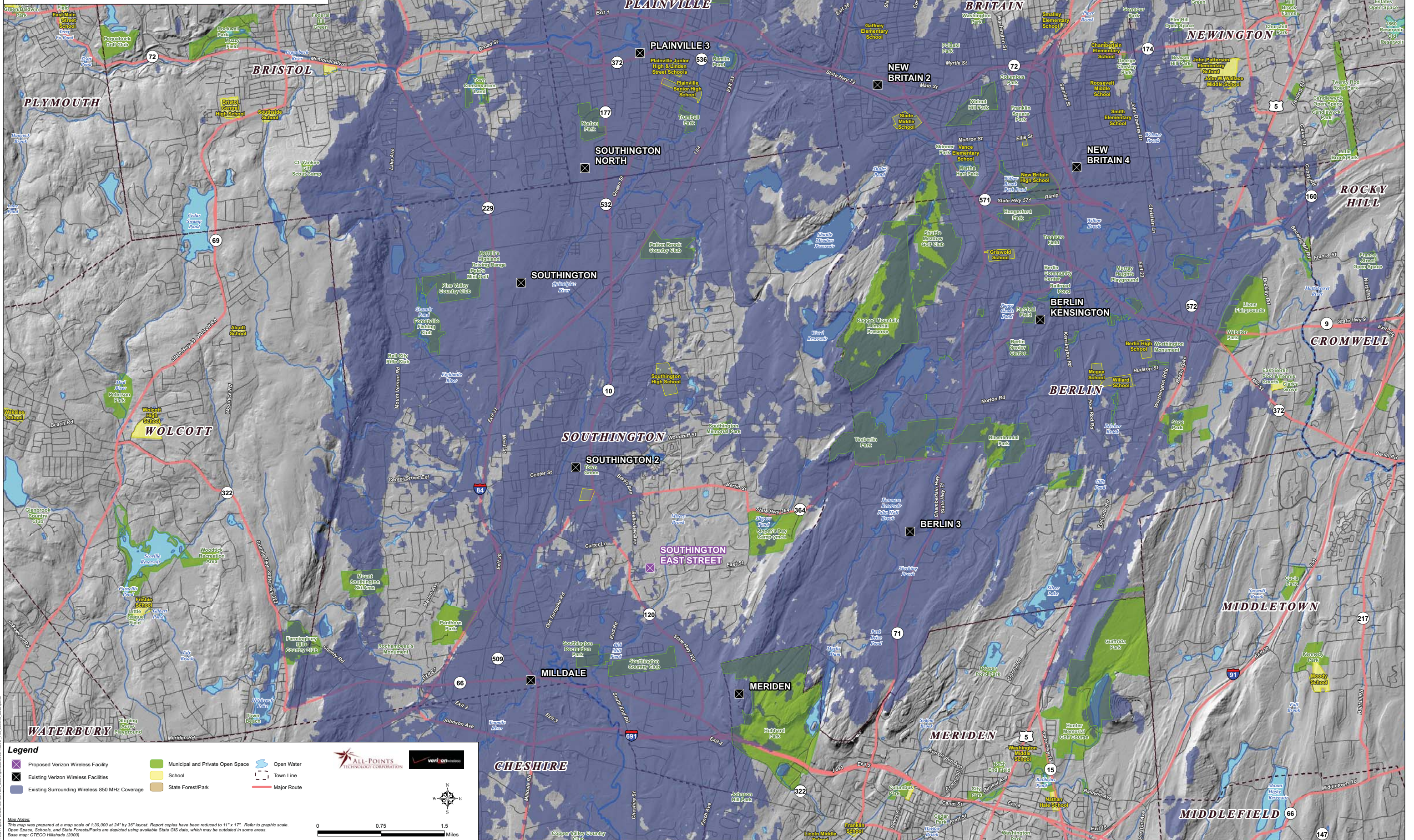
Coverage is depicted at a signal threshold of 120 dB Operational Path Loss



Copyright 2010 Verizon Wireless. All rights reserved. This map is a service mark of Verizon Wireless. All other marks are the property of their respective owners.

**Existing Verizon Wireless 850 MHz Coverage
Southington, Connecticut and Surrounding Area
(*Map Scale is 1:30,000)**

Coverage plot assumes 55% site loading on the Cellco system
Coverage is depicted at a signal threshold of -85 dBm



Legend

- Proposed Verizon Wireless Facility
- Municipal and Private Open Space
- Open Water
- Existing Verizon Wireless Facilities
- School
- Town Line
- Existing Surrounding Wireless 850 MHz Coverage
- State Forest/Park
- Major Route

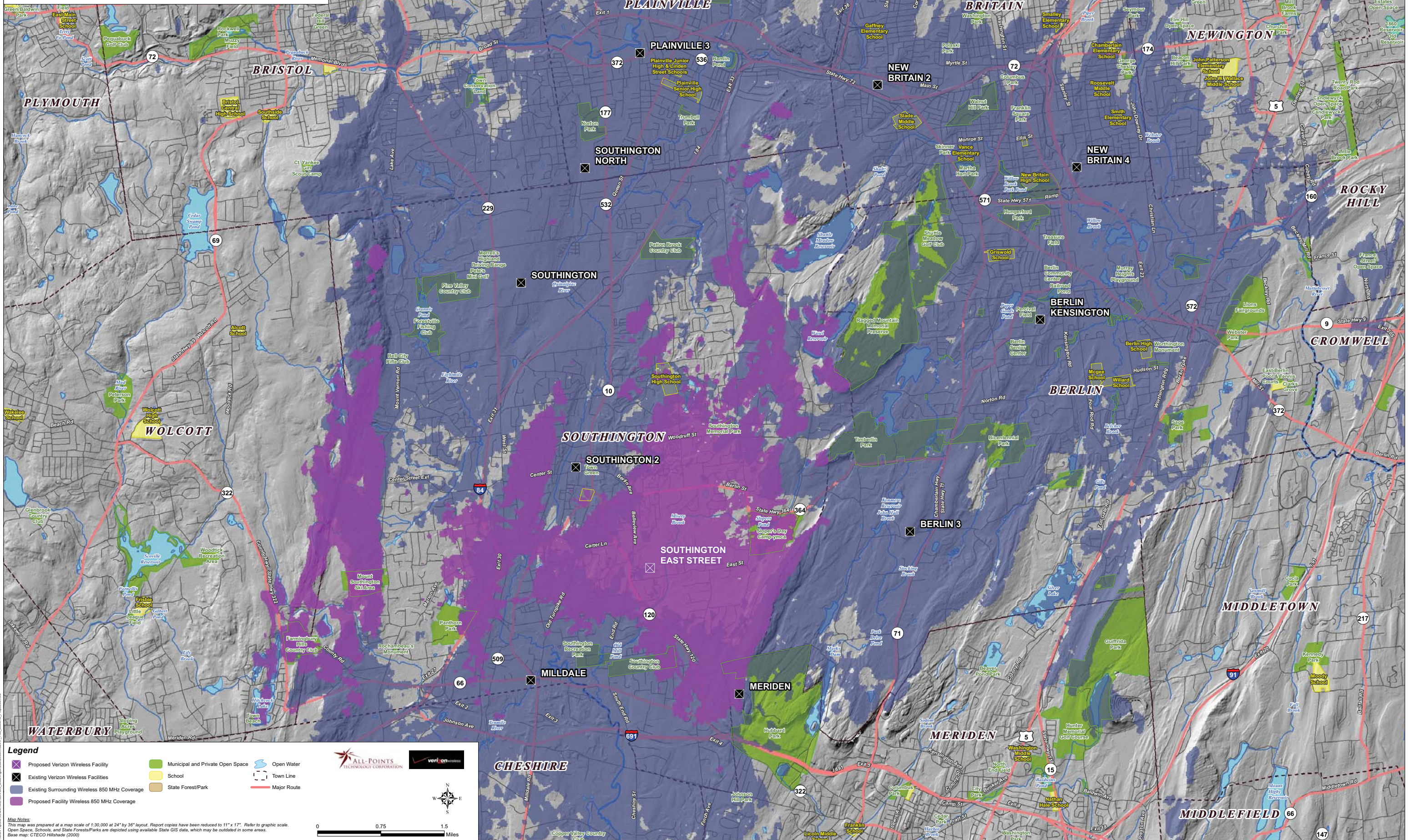
Map Notes:
This map was prepared at a map scale of 1:30,000 at 24" by 36" layout. Report copies have been reduced to 11" x 17". Refer to graphic scale.
Open Space, Schools, and State Forests/Parks are depicted using available State GIS data, which may be outdated in some areas.
Base map: CTECO Hillshade (2000)

Scale: 0 0.75 1.5 Miles

Logos: ALL-POINTS TECHNOLOGY CORPORATION, verizon

**Proposed Verizon Wireless 850 MHz Coverage
 Southington, Connecticut and Surrounding Area
 (*Map Scale is 1:30,000)**

Coverage plot assumes 55% site loading on the Cellco system
 Coverage is depicted at a signal threshold of -85 dBm



Legend

- Proposed Verizon Wireless Facility
- Municipal and Private Open Space
- Open Water
- Existing Verizon Wireless Facilities
- School
- Town Line
- Existing Surrounding Wireless 850 MHz Coverage
- State Forest/Park
- Major Route
- Proposed Facility Wireless 850 MHz Coverage

Map Notes:
 This map was prepared at a map scale of 1:30,000 at 24" by 36" layout. Report copies have been reduced to 11" x 17". Refer to graphic scale.
 Open Space, Schools, and State Forest/Parks are depicted using available State GIS data, which may be outdated in some areas.
 Base map: CTECO Hillshade (2000)

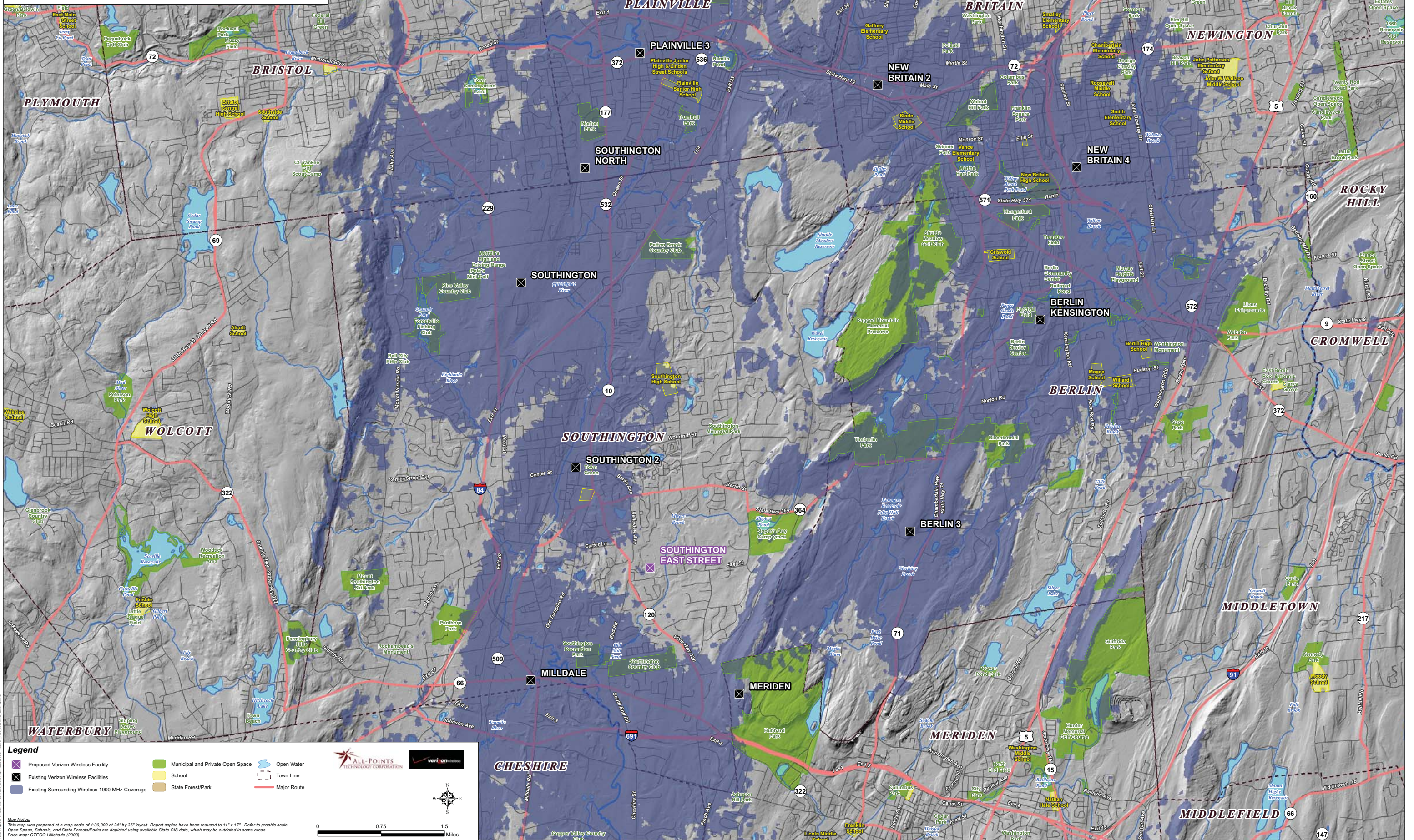
0 0.75 1.5 Miles

ALL-POINTS TECHNOLOGY CORPORATION

verizon

Existing Verizon Wireless 1900 MHz Coverage
Southington, Connecticut and Surrounding Area
 (*Map Scale is 1:30,000)

Coverage plot assumes 55% site loading on the Cellco system
 Coverage is depicted at a signal threshold of -85 dBm



Legend

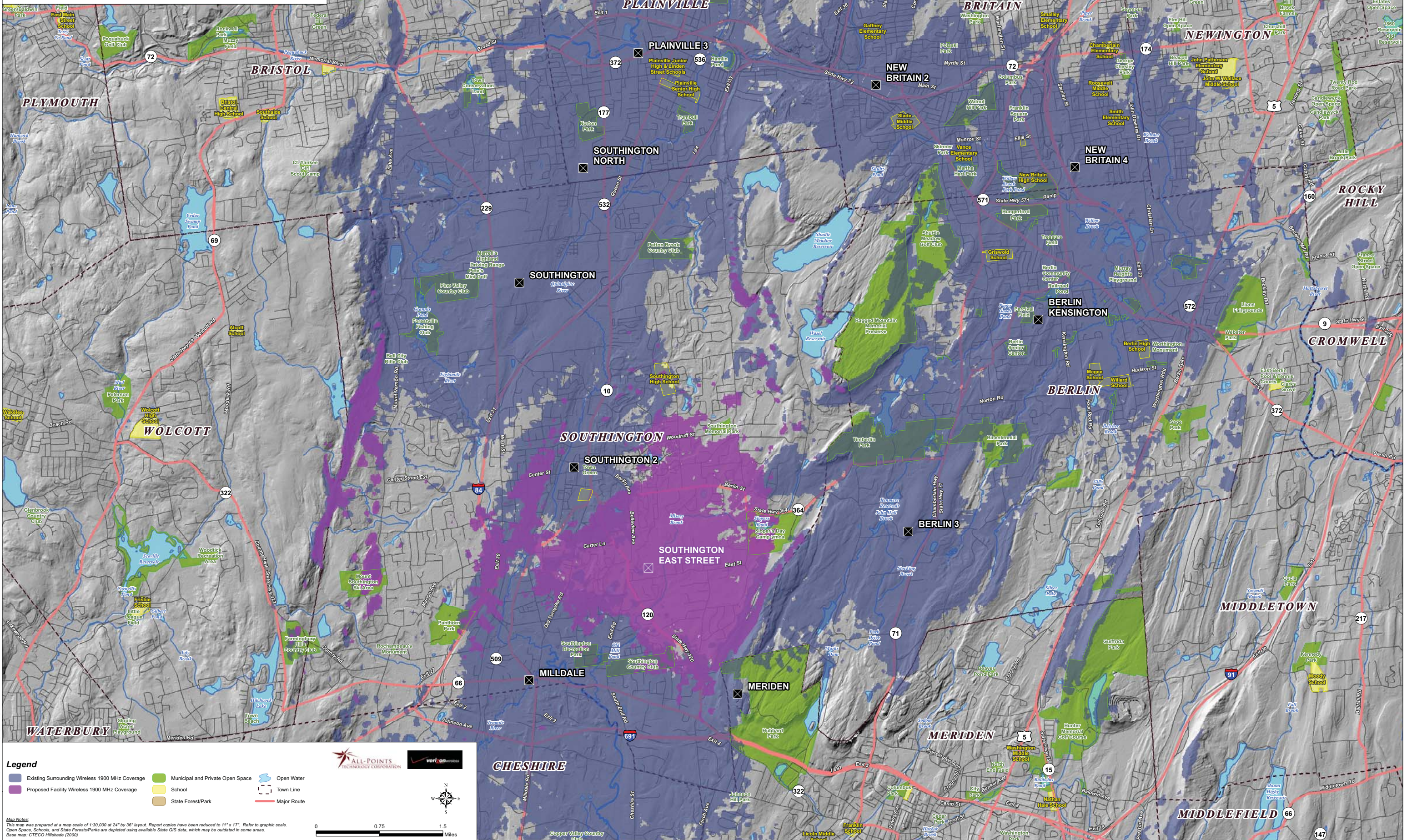
- Proposed Verizon Wireless Facility
- Municipal and Private Open Space
- Open Water
- Existing Verizon Wireless Facilities
- School
- Town Line
- Existing Surrounding Wireless 1900 MHz Coverage
- State Forest/Park
- Major Route

Map Notes:
 This map was prepared at a map scale of 1:30,000 at 24" by 36" layout. Report copies have been reduced to 11" x 17". Refer to graphic scale.
 Open Space, Schools, and State Forest/Parks are depicted using available State GIS data, which may be outdated in some areas.
 Base map: CTECO Hillshade (2000)

0 0.75 1.5
 Miles

**Proposed Verizon Wireless 1900 MHz Coverage
 Southington, Connecticut and Surrounding Area
 (*Map Scale is 1:30,000)**

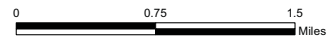
Coverage plot assumes 55% site loading on the Cellco system
 Coverage is depicted at a signal threshold of -85 dBm



- Legend**
- Existing Surrounding Wireless 1900 MHz Coverage
 - Municipal and Private Open Space
 - Open Water
 - Proposed Facility Wireless 1900 MHz Coverage
 - School
 - State Forest/Park
 - Town Line
 - Major Route

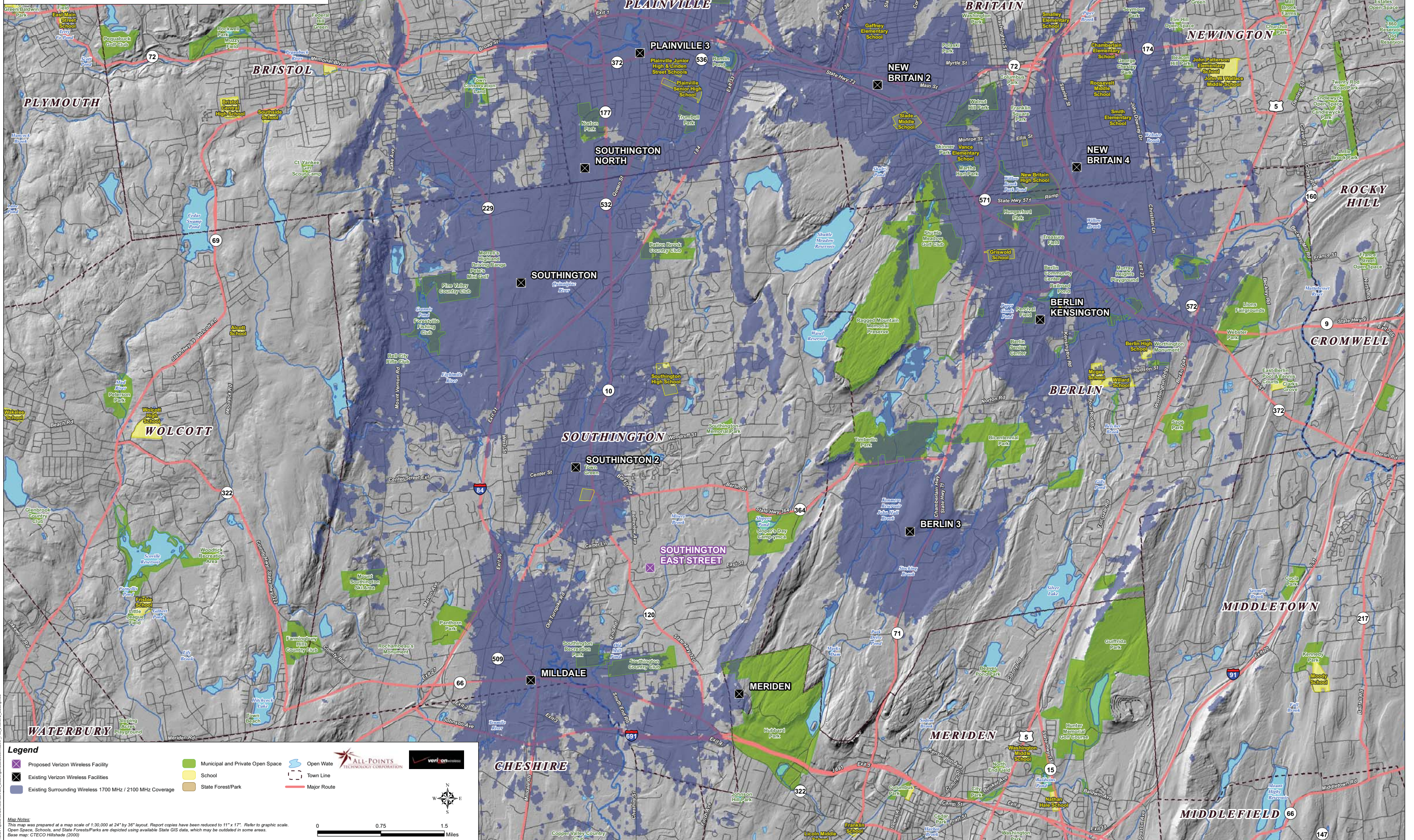


Map Notes:
 This map was prepared at a map scale of 1:30,000 at 24" by 36" layout. Report copies have been reduced to 11" x 17". Refer to graphic scale.
 Open Space, Schools, and State Forests/Parks are depicted using available State GIS data, which may be outdated in some areas.
 Base map: CTECO Hillshade (2000)



Existing Verizon Wireless 2100 MHz Coverage
Southington, Connecticut and Surrounding Area
 (*Map Scale is 1:30,000)

Coverage is depicted at a signal threshold of 120 dB Operational Path Loss



Legend

- Proposed Verizon Wireless Facility
- Existing Surrounding Wireless 1700 MHz / 2100 MHz Coverage
- Municipal and Private Open Space
- School
- Open Water
- Town Line
- Major Route
- State Forest/Park

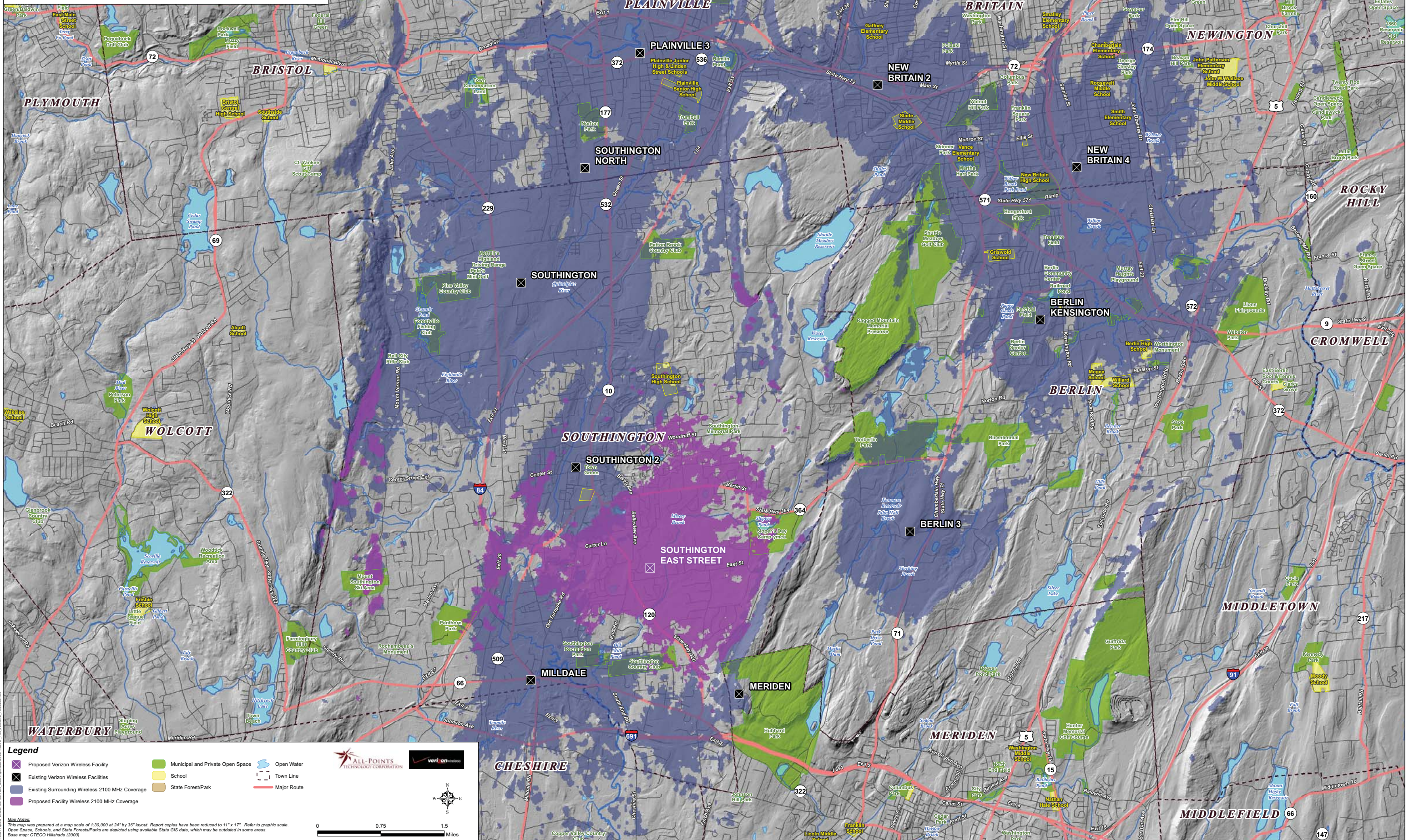
Map Notes:
 This map was prepared at a map scale of 1:30,000 at 24" by 36" layout. Report copies have been reduced to 11" x 17". Refer to graphic scale.
 Open Space, Schools, and State Forest/Parks are depicted using available State GIS data, which may be outdated in some areas.
 Base map: CTECO Hillshade (2000)

Scale: 0 0.75 1.5 Miles

Logos: ALL-POINTS TECHNOLOGY CORPORATION, verizon

**Proposed Verizon Wireless 2100 MHz Coverage
 Southington, Connecticut and Surrounding Area
 (*Map Scale is 1:30,000)**

Coverage is depicted at a signal threshold of 120 dB Operational Path Loss



Legend

- Proposed Verizon Wireless Facility
- Municipal and Private Open Space
- Open Water
- Existing Verizon Wireless Facilities
- School
- Town Line
- Existing Surrounding Wireless 2100 MHz Coverage
- State Forest/Park
- Major Routes
- Proposed Facility Wireless 2100 MHz Coverage

Map Notes:
 This map was prepared at a map scale of 1:30,000 at 24" by 36" layout. Report copies have been reduced to 11" x 17". Refer to graphic scale.
 Open Space, Schools, and State Forest/Parks are depicted using available State GIS data, which may be outdated in some areas.
 Base map: CTECO Hillshade (2000)

0 0.75 1.5
Miles

Copyright 2010 Verizon Wireless. All rights reserved. Southington, Connecticut. 2/10/2010. Proposed map.