



STATE OF CONNECTICUT

CONNECTICUT SITING COUNCIL

Ten Franklin Square, New Britain, CT 06051

Phone: (860) 827-2935 Fax: (860) 827-2950

E-Mail: siting.council@ct.gov

www.ct.gov/csc

February 27, 2015

TO: Council Members

FROM: Melanie Bachman, Acting Executive Director *MAB*

RE: **DOCKET NO. 455** – Cellco Partnership d/b/a Verizon Wireless application for a Certificate of Environmental Compatibility and Public Need for the construction, maintenance, and operation of a telecommunications facility located at Southington Tax Assessor Map/Lot 066053, 99 East Street, Southington, Connecticut.

The Connecticut Siting Council has scheduled a field review for this docket for Tuesday, March 10, 2015 at 2:00 p.m. Council members will meet at the site at 99 East Street in Southington, Connecticut. Please note that field conditions may warrant appropriate footwear.

A public hearing is scheduled for Tuesday, March 10, 2015, beginning at 3:00 p.m. in the Council Chambers at the Southington Town Hall, 196-200 North Main Street in Southington, Connecticut.

Maps and directions are enclosed.

MB/cdm

Enclosure

- c: Secretary of the State (via e-mail service)
- Parties and Intervenors (via e-mail service)
- Tech Theatrical Services, LLC (via e-mail service)
- United Reporters (via e-mail service)

Directions to 99 East Street, Southington, Connecticut.

From Hartford, New Britain, Enfield, Meriden, and Stonington:

- Take I-691 westbound to Exit 4 (Route 322 – Southington).
- From I-691, take Exit 4 and turn right at traffic light at end of exit ramp onto Route 322 – Meriden-Waterbury Turnpike.
- After .3 mile on Meriden-Waterbury Turnpike, turn right at traffic light onto Route 120 – Meriden Avenue (Sunoco station on corner).
- Follow Meriden Avenue for 1.9 miles to East Street; turn right onto East Street.
- Site will be on left after .2 mile. Entrance is next to transmission line tower.

From Stamford, Milford, and Salisbury:

- Take I-691 eastbound (from I-84) to Exit 4 (Route 322 – Southington).
- From I-691, take Exit 4 and turn left at stop sign at end of exit ramp onto Route 322 – Meriden-Waterbury Turnpike.
- After .4 mile on Meriden-Waterbury Turnpike, turn right at traffic light onto Route 120 – Meriden Avenue (Sunoco station on corner).
- Follow Meriden Avenue for 1.9 miles to East Street; turn right onto East Street.
- Site will be on left after .2 mile. Entrance is next to transmission line tower.

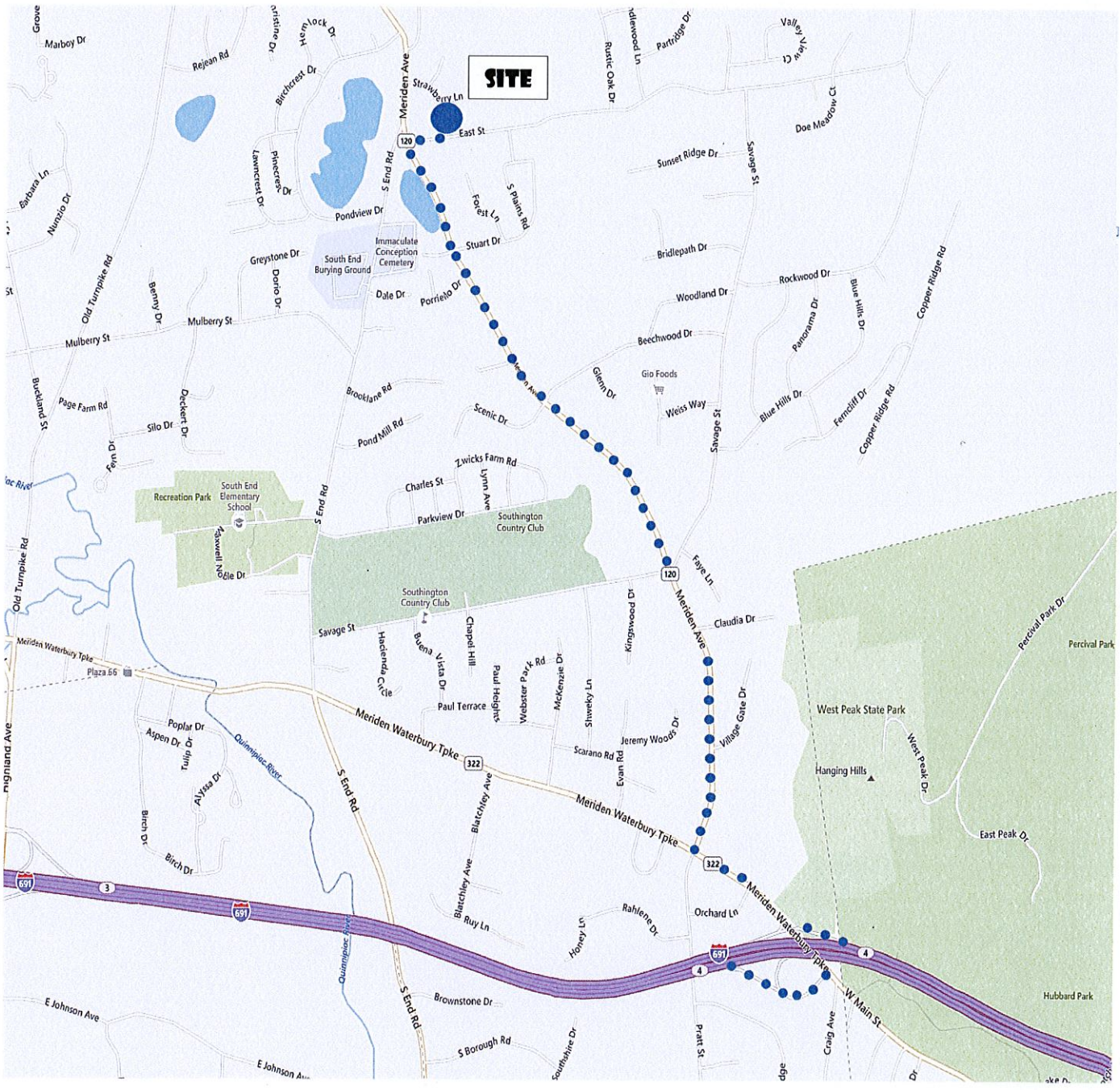
To Hearing/Town Hall from Site

- From the site, turn right onto East Street.
- Follow East Street to stop sign at Meriden Avenue (Route 120) and turn right.
- Follow Meriden Avenue for 1.2 miles to Route 10 (Main Street) and turn right at light at Route 10 intersection.
- Follow Route 10 for .2 mile to Berlin Avenue (TD Bank on corner, right after post office); turn right onto Berlin Avenue and immediately left into parking lot for town hall (the larger brick building adjacent to the lot).

From Town Hall to Restaurant

Dinner will be at Geno's Grill, 98 Main Street in Southington, 860-863-5207. It is located across the street from the Town Hall.

Docket 455 Directions Map: From I-691 to Site



Docket 455 Directions Map: From Site to Town Hall

